



Full wwPDB X-ray Structure Validation Report ⓘ

May 13, 2020 – 11:49 pm BST

PDB ID : 6R0U
Title : Cereblon isoform 4 from *Magnetospirillum gryphiswaldense* in complex with compound 5a and hydrolysis product
Authors : Heim, C.; Hartmann, M.D.
Deposited on : 2019-03-13
Resolution : 1.70 Å(reported)

This is a Full wwPDB X-ray Structure Validation Report for a publicly released PDB entry.

We welcome your comments at validation@mail.wwpdb.org

A user guide is available at

<https://www.wwpdb.org/validation/2017/XrayValidationReportHelp>

with specific help available everywhere you see the ⓘ symbol.

The following versions of software and data (see [references ⓘ](#)) were used in the production of this report:

MolProbity : 4.02b-467
Mogul : 1.8.5 (274361), CSD as541be (2020)
Xtriage (Phenix) : 1.13
EDS : 2.11
buster-report : 1.1.7 (2018)
Percentile statistics : 20191225.v01 (using entries in the PDB archive December 25th 2019)
Refmac : 5.8.0158
CCP4 : 7.0.044 (Gargrove)
Ideal geometry (proteins) : Engh & Huber (2001)
Ideal geometry (DNA, RNA) : Parkinson et al. (1996)
Validation Pipeline (wwPDB-VP) : 2.11

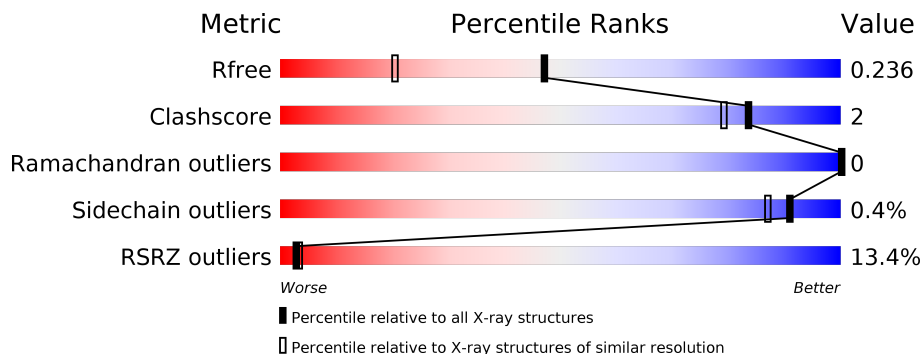
1 Overall quality at a glance

The following experimental techniques were used to determine the structure:

X-RAY DIFFRACTION

The reported resolution of this entry is 1.70 Å.

Percentile scores (ranging between 0-100) for global validation metrics of the entry are shown in the following graphic. The table shows the number of entries on which the scores are based.



Metric	Whole archive (#Entries)	Similar resolution (#Entries, resolution range(Å))
R_{free}	130704	4298 (1.70-1.70)
Clashscore	141614	4695 (1.70-1.70)
Ramachandran outliers	138981	4610 (1.70-1.70)
Sidechain outliers	138945	4610 (1.70-1.70)
RSRZ outliers	127900	4222 (1.70-1.70)

The table below summarises the geometric issues observed across the polymeric chains and their fit to the electron density. The red, orange, yellow and green segments on the lower bar indicate the fraction of residues that contain outliers for ≥ 3 , 2, 1 and 0 types of geometric quality criteria respectively. A grey segment represents the fraction of residues that are not modelled. The numeric value for each fraction is indicated below the corresponding segment, with a dot representing fractions $\leq 5\%$. The upper red bar (where present) indicates the fraction of residues that have poor fit to the electron density. The numeric value is given above the bar.

Mol	Chain	Length	Quality of chain
1	A	125	 79% 8% 13%
1	B	125	 82% • 16%
1	C	125	 34% 81% • 15%

2 Entry composition

There are 8 unique types of molecules in this entry. The entry contains 2766 atoms, of which 0 are hydrogens and 0 are deuteriums.

In the tables below, the ZeroOcc column contains the number of atoms modelled with zero occupancy, the AltConf column contains the number of residues with at least one atom in alternate conformation and the Trace column contains the number of residues modelled with at most 2 atoms.

- Molecule 1 is a protein called Cereblon isoform 4.

Mol	Chain	Residues	Atoms					ZeroOcc	AltConf	Trace
			Total	C	N	O	S			
1	A	109	847	542	149	149	7	0	2	0
1	B	105	836	539	148	142	7	0	2	0
1	C	106	821	530	143	141	7	0	1	0

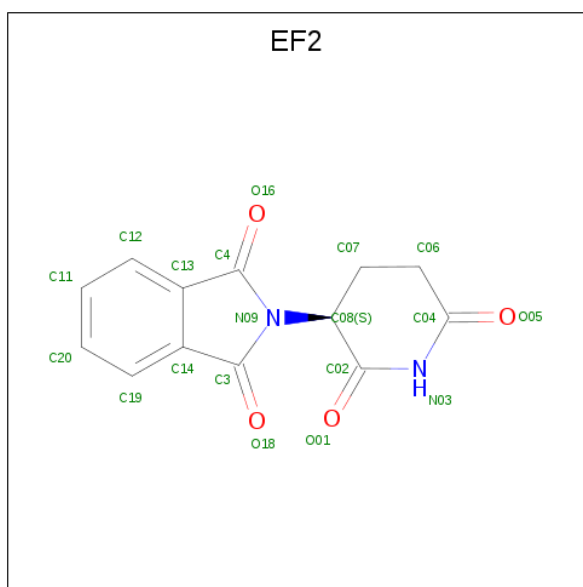
There are 3 discrepancies between the modelled and reference sequences:

Chain	Residue	Modelled	Actual	Comment	Reference
A	0	ALA	-	expression tag	UNP A4TVL0
B	0	ALA	-	expression tag	UNP A4TVL0
C	0	ALA	-	expression tag	UNP A4TVL0

- Molecule 2 is ZINC ION (three-letter code: ZN) (formula: Zn).

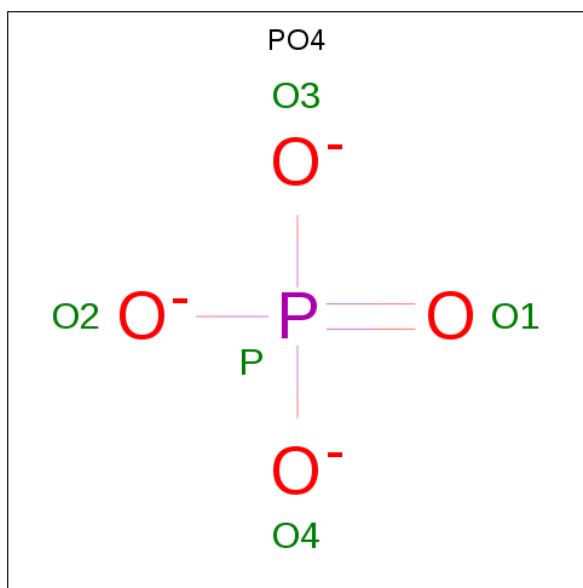
Mol	Chain	Residues	Atoms		ZeroOcc	AltConf
2	B	1	Total	Zn	0	0
			1	1		
2	A	1	Total	Zn	0	0
			1	1		
2	C	1	Total	Zn	0	0
			1	1		

- Molecule 3 is S-Thalidomide (three-letter code: EF2) (formula: C₁₃H₁₀N₂O₄) (labeled as "Ligand of Interest" by author).



Mol	Chain	Residues	Atoms				ZeroOcc	AltConf
			Total	C	N	O		
3	A	1	19	13	2	4	0	0

- Molecule 4 is PHOSPHATE ION (three-letter code: PO4) (formula: O₄P).

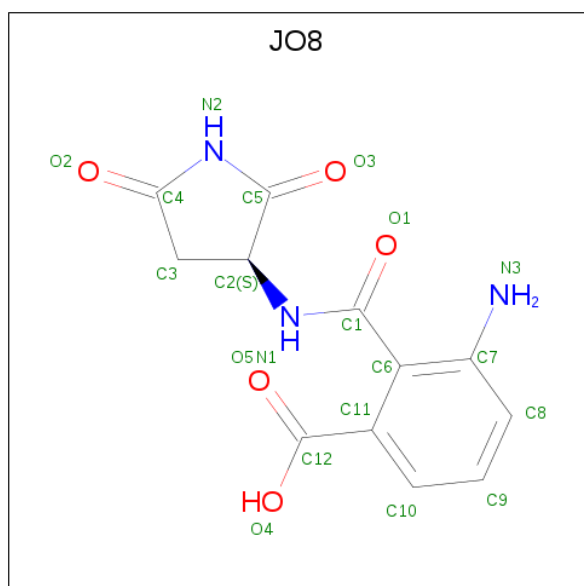


Mol	Chain	Residues	Atoms			ZeroOcc	AltConf
			Total	O	P		
4	A	1	5	4	1	0	0
4	B	1	5	4	1	0	0
4	C	1	5	4	1	0	0

- Molecule 5 is CHLORIDE ION (three-letter code: CL) (formula: Cl).

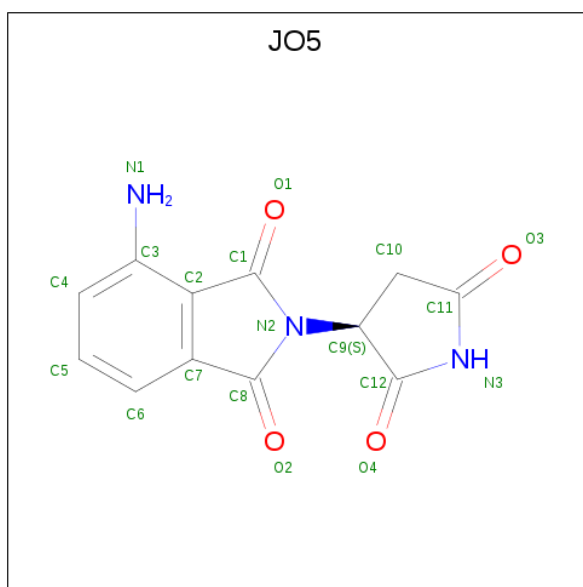
Mol	Chain	Residues	Atoms	ZeroOcc	AltConf
5	B	1	Total Cl 1 1	0	0
5	A	1	Total Cl 1 1	0	0

- Molecule 6 is 3-azanyl-2-[[[(3 {S})-2,5-bis(oxidanylidene)pyrrolidin-3-yl]carbamoyl]benzoic acid (three-letter code: JO8) (formula: C₁₂H₁₁N₃O₅) (labeled as "Ligand of Interest" by author).



Mol	Chain	Residues	Atoms	ZeroOcc	AltConf
6	B	1	Total C N O 20 12 3 5	0	0

- Molecule 7 is 4-azanyl-2-[(3 {S})-2,5-bis(oxidanylidene)pyrrolidin-3-yl]isoindole-1,3-dione (three-letter code: JO5) (formula: C₁₂H₉N₃O₄) (labeled as "Ligand of Interest" by author).



Mol	Chain	Residues	Atoms				ZeroOcc	AltConf
			Total	C	N	O		
7	C	1	19	12	3	4	0	0

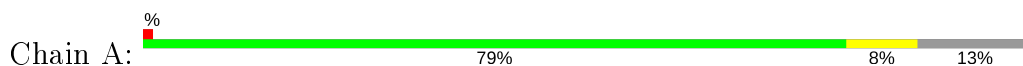
- Molecule 8 is water.

Mol	Chain	Residues	Atoms		ZeroOcc	AltConf
8	A	74	Total	O	0	0
			74	74		
8	B	65	Total	O	0	0
			65	65		
8	C	45	Total	O	0	0
			45	45		

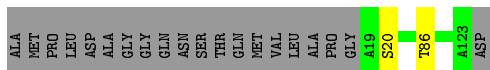
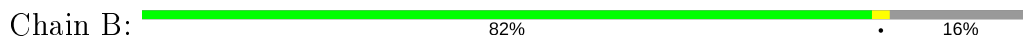
3 Residue-property plots [i](#)

These plots are drawn for all protein, RNA and DNA chains in the entry. The first graphic for a chain summarises the proportions of the various outlier classes displayed in the second graphic. The second graphic shows the sequence view annotated by issues in geometry and electron density. Residues are color-coded according to the number of geometric quality criteria for which they contain at least one outlier: green = 0, yellow = 1, orange = 2 and red = 3 or more. A red dot above a residue indicates a poor fit to the electron density ($RSRZ > 2$). Stretches of 2 or more consecutive residues without any outlier are shown as a green connector. Residues present in the sample, but not in the model, are shown in grey.

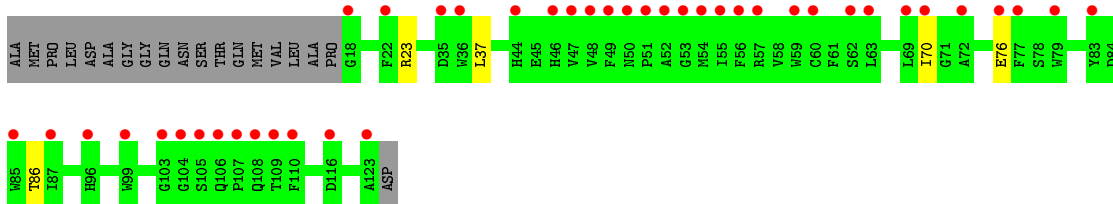
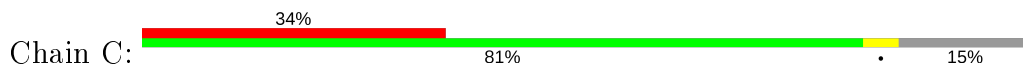
- Molecule 1: Cereblon isoform 4



- Molecule 1: Cereblon isoform 4



- Molecule 1: Cereblon isoform 4



4 Data and refinement statistics

Property	Value	Source
Space group	P 21 21 21	Depositor
Cell constants a, b, c, α , β , γ	56.95Å 59.58Å 89.05Å 90.00° 90.00° 90.00°	Depositor
Resolution (Å)	47.98 – 1.70 47.98 – 1.70	Depositor EDS
% Data completeness (in resolution range)	99.0 (47.98-1.70) 99.0 (47.98-1.70)	Depositor EDS
R_{merge}	0.07	Depositor
R_{sym}	(Not available)	Depositor
$\langle I/\sigma(I) \rangle$ ¹	1.33 (at 1.70Å)	Xtrriage
Refinement program	REFMAC 5.8.0189	Depositor
R, R_{free}	0.187 , 0.227 0.199 , 0.236	Depositor DCC
R_{free} test set	1688 reflections (4.98%)	wwPDB-VP
Wilson B-factor (Å ²)	26.5	Xtrriage
Anisotropy	0.037	Xtrriage
Bulk solvent k_{sol} (e/Å ³), B_{sol} (Å ²)	0.34 , 40.8	EDS
L-test for twinning ²	$\langle L \rangle = 0.48$, $\langle L^2 \rangle = 0.31$	Xtrriage
Estimated twinning fraction	0.025 for k,h,-l	Xtrriage
F_o, F_c correlation	0.96	EDS
Total number of atoms	2766	wwPDB-VP
Average B, all atoms (Å ²)	37.0	wwPDB-VP

Xtrriage's analysis on translational NCS is as follows: *The largest off-origin peak in the Patterson function is 6.67% of the height of the origin peak. No significant pseudotranslation is detected.*

¹Intensities estimated from amplitudes.

²Theoretical values of $\langle |L| \rangle$, $\langle L^2 \rangle$ for acentric reflections are 0.5, 0.333 respectively for untwinned datasets, and 0.375, 0.2 for perfectly twinned datasets.

5 Model quality

5.1 Standard geometry

Bond lengths and bond angles in the following residue types are not validated in this section: ZN, JO5, CL, JO8, PO4, EF2

The Z score for a bond length (or angle) is the number of standard deviations the observed value is removed from the expected value. A bond length (or angle) with $|Z| > 5$ is considered an outlier worth inspection. RMSZ is the root-mean-square of all Z scores of the bond lengths (or angles).

Mol	Chain	Bond lengths		Bond angles	
		RMSZ	# $ Z > 5$	RMSZ	# $ Z > 5$
1	A	0.98	0/881	0.99	5/1193 (0.4%)
1	B	1.00	1/873 (0.1%)	0.96	0/1182
1	C	0.84	0/851	0.92	1/1151 (0.1%)
All	All	0.94	1/2605 (0.0%)	0.96	6/3526 (0.2%)

All (1) bond length outliers are listed below:

Mol	Chain	Res	Type	Atoms	Z	Observed(Å)	Ideal(Å)
1	B	20	SER	CA-CB	-6.79	1.42	1.52

All (6) bond angle outliers are listed below:

Mol	Chain	Res	Type	Atoms	Z	Observed(°)	Ideal(°)
1	A	84	ASP	CB-CG-OD1	-6.50	112.45	118.30
1	A	25	ARG	NE-CZ-NH2	-6.11	117.24	120.30
1	A	63	LEU	CA-CB-CG	5.31	127.51	115.30
1	A	34	ARG	NE-CZ-NH1	5.22	122.91	120.30
1	A	84	ASP	CB-CG-OD2	5.21	122.99	118.30
1	C	37	LEU	CA-CB-CG	5.16	127.16	115.30

There are no chirality outliers.

There are no planarity outliers.

5.2 Too-close contacts

In the following table, the Non-H and H(model) columns list the number of non-hydrogen atoms and hydrogen atoms in the chain respectively. The H(added) column lists the number of hydrogen atoms added and optimized by MolProbity. The Clashes column lists the number of clashes within the asymmetric unit, whereas Symm-Clashes lists symmetry related clashes.

Mol	Chain	Non-H	H(model)	H(added)	Clashes	Symm-Clashes
1	A	847	0	793	7	0
1	B	836	0	794	1	0
1	C	821	0	770	3	0
2	A	1	0	0	0	0
2	B	1	0	0	0	0
2	C	1	0	0	0	0
3	A	19	0	10	0	0
4	A	5	0	0	0	0
4	B	5	0	0	0	0
4	C	5	0	0	0	0
5	A	1	0	0	0	0
5	B	1	0	0	0	0
6	B	20	0	0	1	0
7	C	19	0	0	0	0
8	A	74	0	0	1	0
8	B	65	0	0	1	0
8	C	45	0	0	0	0
All	All	2766	0	2367	12	0

The all-atom clashscore is defined as the number of clashes found per 1000 atoms (including hydrogen atoms). The all-atom clashscore for this structure is 2.

All (12) close contacts within the same asymmetric unit are listed below, sorted by their clash magnitude.

Atom-1	Atom-2	Interatomic distance (Å)	Clash overlap (Å)
1:B:86[A]:THR:HG21	8:B:326:HOH:O	1.77	0.83
1:A:21:ILE:CG1	1:A:123:ALA:HA	2.29	0.63
1:A:50:ASN:HD21	1:A:54:MET:CE	2.13	0.61
6:B:202:JO8:N1	6:B:202:JO8:N3	2.51	0.59
1:C:23:ARG:HG2	1:C:23:ARG:NH1	2.18	0.58
1:A:21:ILE:HG13	1:A:123:ALA:HA	1.87	0.56
1:A:16:ALA:N	8:A:302:HOH:O	2.40	0.54
1:C:23:ARG:HG2	1:C:23:ARG:HH11	1.73	0.54
1:A:50:ASN:HD21	1:A:54:MET:HE2	1.73	0.53
1:A:21:ILE:HG12	1:A:123:ALA:HA	1.89	0.53
1:A:49:PHE:HA	1:A:54:MET:O	2.18	0.42
1:C:70:ILE:O	1:C:86:THR:HG23	2.21	0.41

There are no symmetry-related clashes.

5.3 Torsion angles [i](#)

5.3.1 Protein backbone [i](#)

In the following table, the Percentiles column shows the percent Ramachandran outliers of the chain as a percentile score with respect to all X-ray entries followed by that with respect to entries of similar resolution.

The Analysed column shows the number of residues for which the backbone conformation was analysed, and the total number of residues.

Mol	Chain	Analysed	Favoured	Allowed	Outliers	Percentiles	
1	A	109/125 (87%)	106 (97%)	3 (3%)	0	100	100
1	B	106/125 (85%)	105 (99%)	1 (1%)	0	100	100
1	C	105/125 (84%)	102 (97%)	3 (3%)	0	100	100
All	All	320/375 (85%)	313 (98%)	7 (2%)	0	100	100

There are no Ramachandran outliers to report.

5.3.2 Protein sidechains [i](#)

In the following table, the Percentiles column shows the percent sidechain outliers of the chain as a percentile score with respect to all X-ray entries followed by that with respect to entries of similar resolution.

The Analysed column shows the number of residues for which the sidechain conformation was analysed, and the total number of residues.

Mol	Chain	Analysed	Rotameric	Outliers	Percentiles	
1	A	85/97 (88%)	85 (100%)	0	100	100
1	B	85/97 (88%)	85 (100%)	0	100	100
1	C	81/97 (84%)	80 (99%)	1 (1%)	71	59
All	All	251/291 (86%)	250 (100%)	1 (0%)	91	87

All (1) residues with a non-rotameric sidechain are listed below:

Mol	Chain	Res	Type
1	C	76	GLU

Some sidechains can be flipped to improve hydrogen bonding and reduce clashes. All (1) such sidechains are listed below:

Mol	Chain	Res	Type
1	A	50	ASN

5.3.3 RNA [i](#)

There are no RNA molecules in this entry.

5.4 Non-standard residues in protein, DNA, RNA chains [i](#)

There are no non-standard protein/DNA/RNA residues in this entry.

5.5 Carbohydrates [i](#)

There are no carbohydrates in this entry.

5.6 Ligand geometry [i](#)

Of 11 ligands modelled in this entry, 5 are monoatomic - leaving 6 for Mogul analysis.

In the following table, the Counts columns list the number of bonds (or angles) for which Mogul statistics could be retrieved, the number of bonds (or angles) that are observed in the model and the number of bonds (or angles) that are defined in the Chemical Component Dictionary. The Link column lists molecule types, if any, to which the group is linked. The Z score for a bond length (or angle) is the number of standard deviations the observed value is removed from the expected value. A bond length (or angle) with $|Z| > 2$ is considered an outlier worth inspection. RMSZ is the root-mean-square of all Z scores of the bond lengths (or angles).

Mol	Type	Chain	Res	Link	Bond lengths			Bond angles		
					Counts	RMSZ	# Z > 2	Counts	RMSZ	# Z > 2
3	EF2	A	202	-	21,21,21	3.17	5 (23%)	31,31,31	3.58	18 (58%)
6	JO8	B	202	-	19,21,21	2.40	4 (21%)	21,30,30	2.90	10 (47%)
4	PO4	B	203	-	4,4,4	1.06	0	6,6,6	0.65	0
4	PO4	A	203	-	4,4,4	0.55	0	6,6,6	1.07	0
4	PO4	C	203	-	4,4,4	0.90	0	6,6,6	0.66	0
7	JO5	C	202	-	21,21,21	0.65	0	25,32,32	1.17	3 (12%)

In the following table, the Chirals column lists the number of chiral outliers, the number of chiral centers analysed, the number of these observed in the model and the number defined in the Chemical Component Dictionary. Similar counts are reported in the Torsion and Rings columns. '-' means no outliers of that kind were identified.

Mol	Type	Chain	Res	Link	Chirals	Torsions	Rings
3	EF2	A	202	-	-	0/4/33/33	0/3/3/3
7	JO5	C	202	-	-	0/4/32/32	0/3/3/3
6	JO8	B	202	-	-	3/8/24/24	0/2/2/2

All (9) bond length outliers are listed below:

Mol	Chain	Res	Type	Atoms	Z	Observed(Å)	Ideal(Å)
3	A	202	EF2	O16-C4	11.15	1.44	1.22
3	A	202	EF2	C13-C4	-6.80	1.37	1.48
6	B	202	JO8	C11-C12	6.47	1.53	1.47
6	B	202	JO8	C6-C7	-4.90	1.35	1.42
6	B	202	JO8	C4-N2	-4.31	1.31	1.37
3	A	202	EF2	C3-N09	-3.79	1.32	1.40
6	B	202	JO8	C5-N2	-3.67	1.32	1.37
3	A	202	EF2	C4-N09	-2.68	1.34	1.40
3	A	202	EF2	C08-N09	-2.05	1.42	1.46

All (31) bond angle outliers are listed below:

Mol	Chain	Res	Type	Atoms	Z	Observed(°)	Ideal(°)
3	A	202	EF2	C13-C4-N09	9.66	116.47	105.96
6	B	202	JO8	O1-C1-C6	-7.73	109.31	120.95
3	A	202	EF2	C4-N09-C3	-7.53	102.88	111.53
3	A	202	EF2	C13-C14-C3	-6.70	102.45	108.26
3	A	202	EF2	C14-C3-N09	6.45	112.98	105.96
3	A	202	EF2	O16-C4-N09	-5.39	117.31	124.97
3	A	202	EF2	O18-C3-N09	-4.94	117.95	124.97
6	B	202	JO8	C6-C7-N3	-4.72	115.25	121.66
6	B	202	JO8	C2-C5-N2	3.87	110.29	107.30
3	A	202	EF2	C19-C14-C3	3.84	135.90	129.63
3	A	202	EF2	C07-C08-N09	-3.78	104.69	113.85
6	B	202	JO8	O1-C1-N1	3.68	129.22	122.45
3	A	202	EF2	C14-C13-C4	-3.51	105.21	108.26
7	C	202	JO5	O3-C11-C10	3.45	130.96	126.39
3	A	202	EF2	C07-C06-C04	-3.42	108.06	114.12
6	B	202	JO8	C2-C3-C4	-3.39	100.52	104.61
6	B	202	JO8	C5-C2-N1	-3.33	106.44	111.50
6	B	202	JO8	C11-C6-C7	3.26	122.99	119.09
6	B	202	JO8	O2-C4-C3	-2.69	122.85	126.39
3	A	202	EF2	O05-C04-C06	-2.57	116.67	122.17
7	C	202	JO5	O3-C11-N3	-2.54	121.58	125.00
3	A	202	EF2	O01-C02-N03	2.38	125.24	121.01
3	A	202	EF2	C08-N09-C4	2.37	131.57	123.93

Continued on next page...

Continued from previous page...

Mol	Chain	Res	Type	Atoms	Z	Observed(°)	Ideal(°)
3	A	202	EF2	C04-N03-C02	-2.27	123.45	126.61
6	B	202	JO8	O3-C5-N2	-2.20	122.27	124.94
6	B	202	JO8	C6-C1-N1	2.20	121.43	115.12
7	C	202	JO5	C10-C9-C12	-2.18	101.90	104.40
3	A	202	EF2	C12-C13-C4	2.17	133.17	129.63
3	A	202	EF2	O05-C04-N03	2.17	123.72	120.28
3	A	202	EF2	C06-C07-C08	-2.12	105.78	109.77
3	A	202	EF2	C06-C04-N03	2.04	118.94	116.65

There are no chirality outliers.

All (3) torsion outliers are listed below:

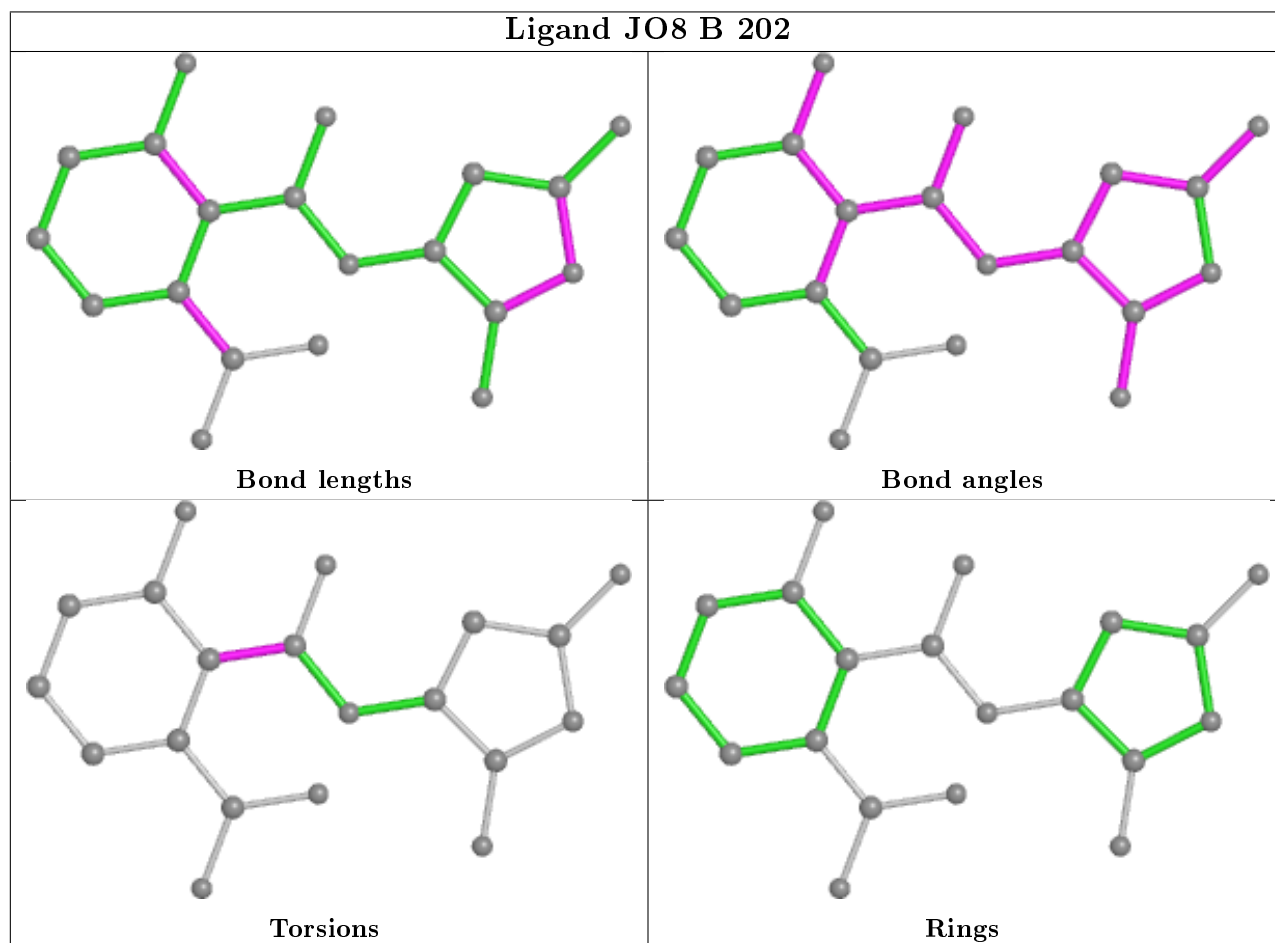
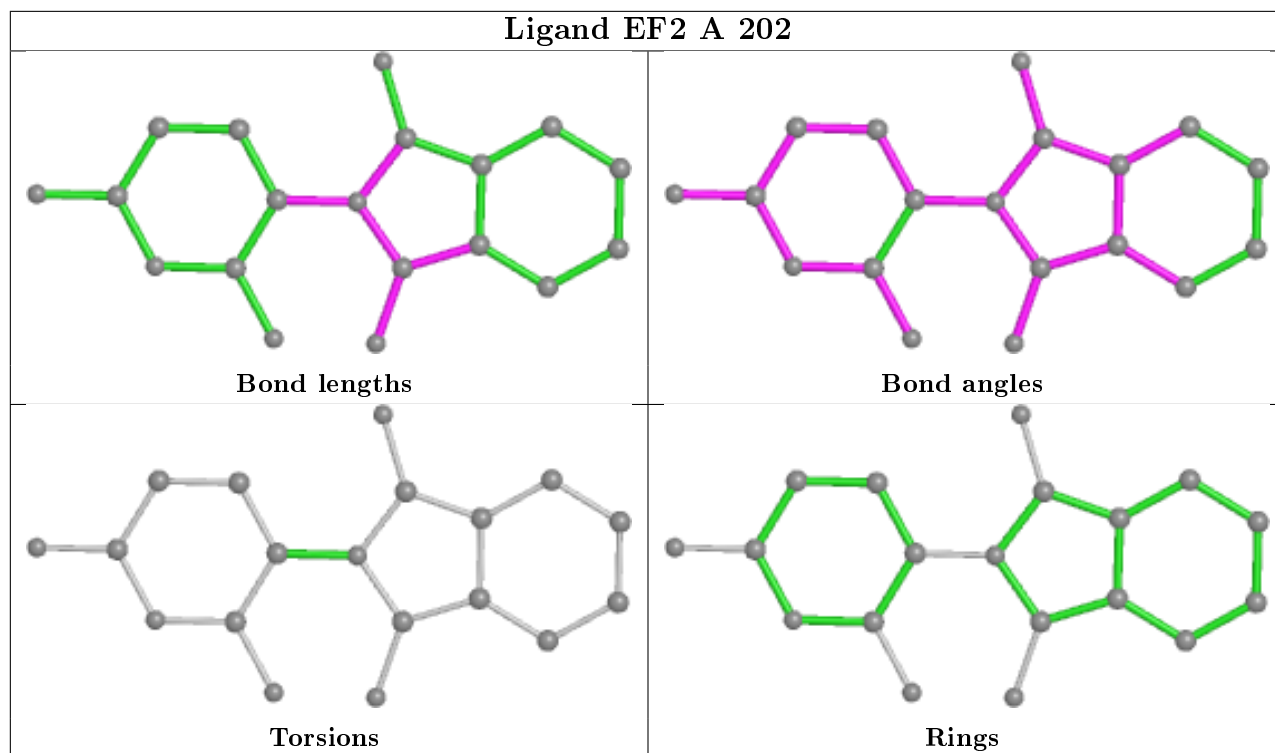
Mol	Chain	Res	Type	Atoms
6	B	202	JO8	O1-C1-C6-C7
6	B	202	JO8	N1-C1-C6-C11
6	B	202	JO8	N1-C1-C6-C7

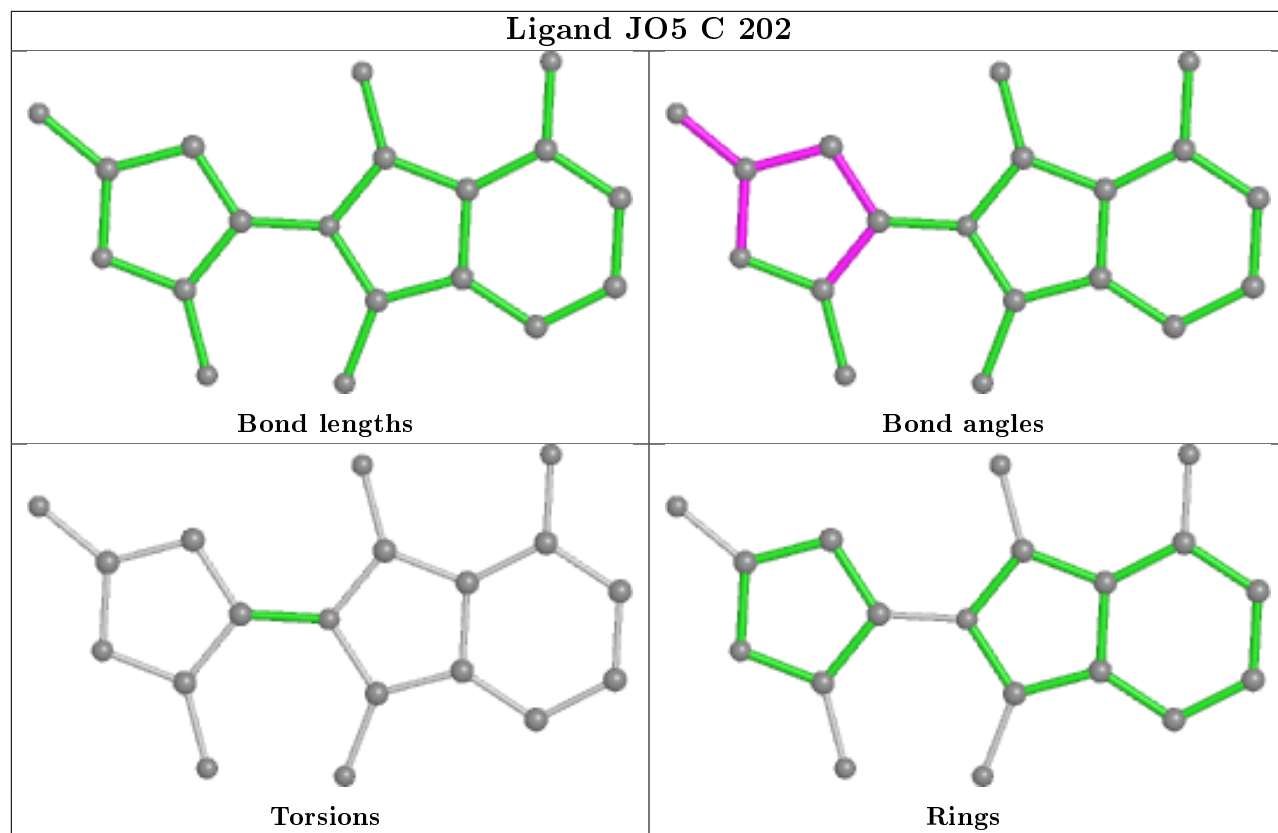
There are no ring outliers.

1 monomer is involved in 1 short contact:

Mol	Chain	Res	Type	Clashes	Symm-Clashes
6	B	202	JO8	1	0

The following is a two-dimensional graphical depiction of Mogul quality analysis of bond lengths, bond angles, torsion angles, and ring geometry for all instances of the Ligand of Interest. In addition, ligands with molecular weight > 250 and outliers as shown on the validation Tables will also be included. For torsion angles, if less than 5% of the Mogul distribution of torsion angles is within 10 degrees of the torsion angle in question, then that torsion angle is considered an outlier. Any bond that is central to one or more torsion angles identified as an outlier by Mogul will be highlighted in the graph. For rings, the root-mean-square deviation (RMSD) between the ring in question and similar rings identified by Mogul is calculated over all ring torsion angles. If the average RMSD is greater than 60 degrees and the minimal RMSD between the ring in question and any Mogul-identified rings is also greater than 60 degrees, then that ring is considered an outlier. The outliers are highlighted in purple. The color gray indicates Mogul did not find sufficient equivalents in the CSD to analyse the geometry.





5.7 Other polymers [i](#)

There are no such residues in this entry.

5.8 Polymer linkage issues [i](#)

There are no chain breaks in this entry.

6 Fit of model and data

6.1 Protein, DNA and RNA chains

In the following table, the column labelled ‘#RSRZ> 2’ contains the number (and percentage) of RSRZ outliers, followed by percent RSRZ outliers for the chain as percentile scores relative to all X-ray entries and entries of similar resolution. The OWAB column contains the minimum, median, 95th percentile and maximum values of the occupancy-weighted average B-factor per residue. The column labelled ‘Q< 0.9’ lists the number of (and percentage) of residues with an average occupancy less than 0.9.

Mol	Chain	Analysed	<RSRZ>	#RSRZ>2	OWAB(Å ²)	Q<0.9
1	A	109/125 (87%)	0.45	1 (0%) 84 87	18, 28, 47, 67	0
1	B	105/125 (84%)	0.07	0 100 100	17, 27, 44, 60	0
1	C	106/125 (84%)	1.84	42 (39%) 0 0	26, 48, 81, 102	0
All	All	320/375 (85%)	0.78	43 (13%) 3 3	17, 33, 64, 102	0

All (43) RSRZ outliers are listed below:

Mol	Chain	Res	Type	RSRZ
1	C	103	GLY	10.3
1	C	77	PHE	6.8
1	C	49	PHE	6.7
1	C	56	PHE	5.3
1	C	51	PRO	5.1
1	C	54	MET	5.1
1	C	48	VAL	5.1
1	C	59	TRP	4.2
1	C	85	TRP	4.1
1	C	55	ILE	4.1
1	C	47	VAL	4.0
1	A	124	ASP	4.0
1	C	107	PRO	3.9
1	C	105	SER	3.7
1	C	60	CYS	3.6
1	C	72	ALA	3.6
1	C	76	GLU	3.1
1	C	36	TRP	3.0
1	C	106	GLN	3.0
1	C	104	GLY	2.9
1	C	116	ASP	2.9
1	C	35	ASP	2.7
1	C	108	GLN	2.7

Continued on next page...

Continued from previous page...

Mol	Chain	Res	Type	RSRZ
1	C	87	ILE	2.7
1	C	52	ALA	2.7
1	C	69	LEU	2.7
1	C	46	HIS	2.6
1	C	79	TRP	2.6
1	C	63	LEU	2.6
1	C	96	HIS	2.6
1	C	50	ASN	2.5
1	C	57	ARG	2.5
1	C	22	PHE	2.4
1	C	18	GLY	2.4
1	C	83	TYR	2.4
1	C	70	ILE	2.4
1	C	109	THR	2.4
1	C	123	ALA	2.2
1	C	99	TRP	2.2
1	C	62	SER	2.1
1	C	53	GLY	2.0
1	C	110	PHE	2.0
1	C	44	HIS	2.0

6.2 Non-standard residues in protein, DNA, RNA chains [i](#)

There are no non-standard protein/DNA/RNA residues in this entry.

6.3 Carbohydrates [i](#)

There are no carbohydrates in this entry.

6.4 Ligands [i](#)

In the following table, the Atoms column lists the number of modelled atoms in the group and the number defined in the chemical component dictionary. The B-factors column lists the minimum, median, 95th percentile and maximum values of B factors of atoms in the group. The column labelled 'Q< 0.9' lists the number of atoms with occupancy less than 0.9.

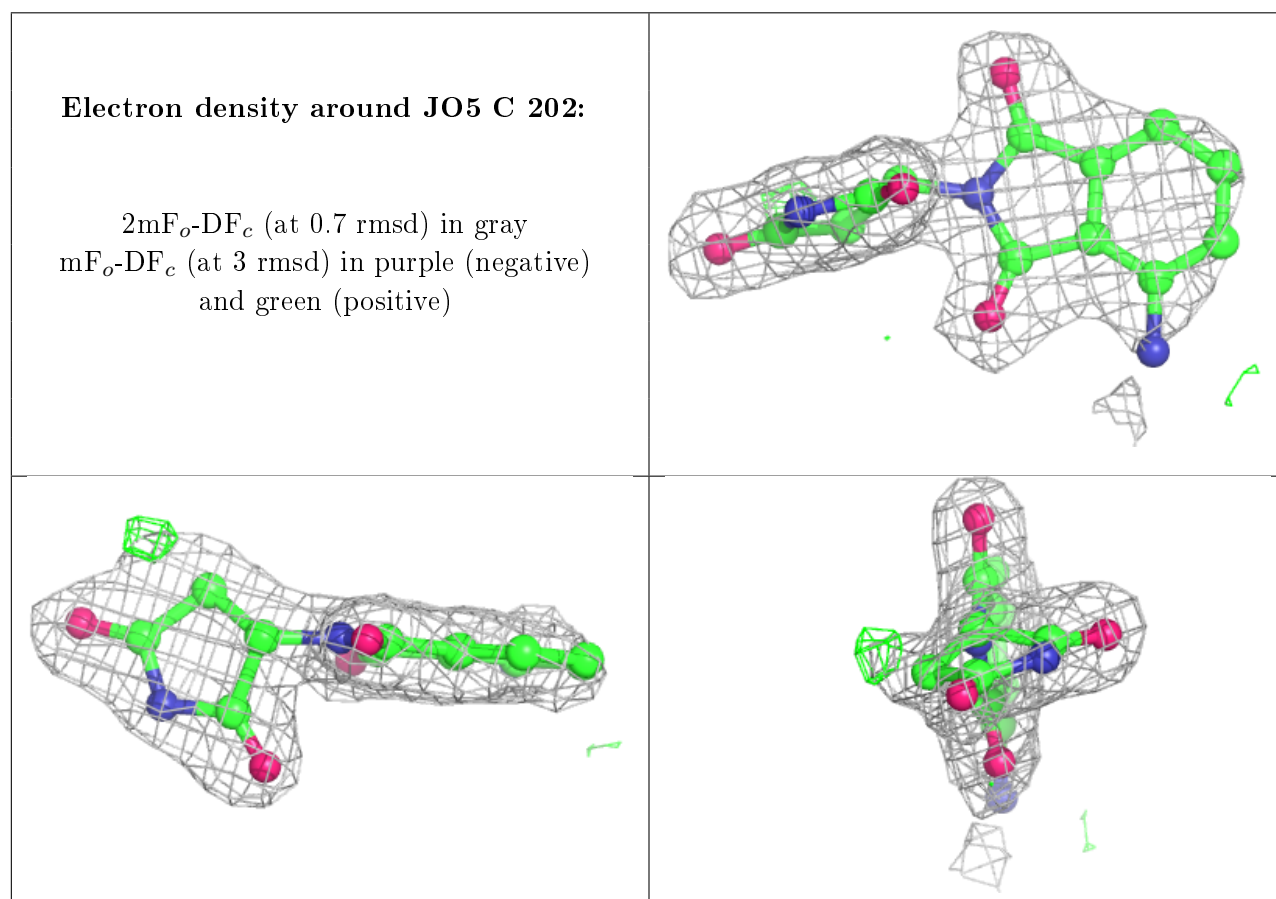
Mol	Type	Chain	Res	Atoms	RSCC	RSR	B-factors(Å ²)	Q<0.9
4	PO4	C	203	5/5	0.88	0.26	80,84,87,90	0
5	CL	B	204	1/1	0.89	0.20	57,57,57,57	0
7	JO5	C	202	19/19	0.89	0.20	49,54,61,64	0

Continued on next page...

Continued from previous page...

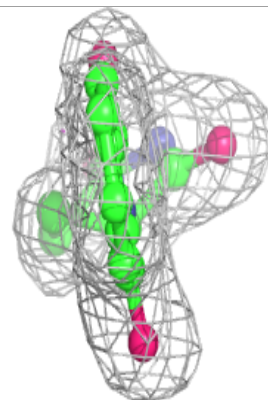
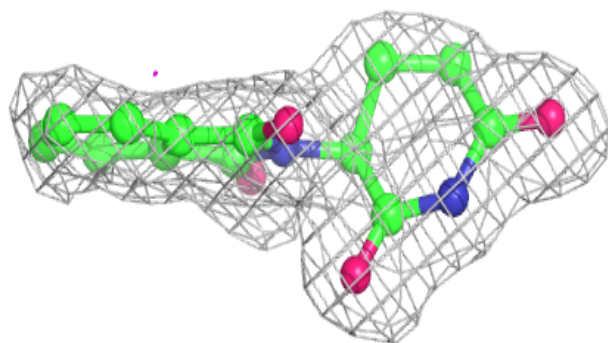
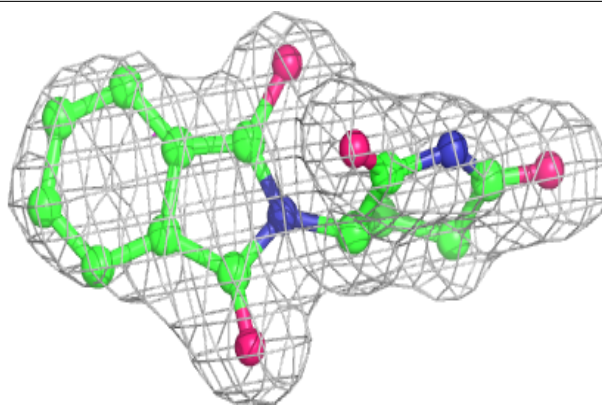
Mol	Type	Chain	Res	Atoms	RSCC	RSR	B-factors(Å ²)	Q<0.9
3	EF2	A	202	19/19	0.93	0.11	24,31,43,43	0
6	JO8	B	202	20/20	0.93	0.11	20,35,61,67	0
5	CL	A	204	1/1	0.94	0.18	57,57,57,57	0
4	PO4	B	203	5/5	0.94	0.24	61,61,66,68	0
4	PO4	A	203	5/5	0.95	0.10	48,58,61,62	0
2	ZN	B	201	1/1	0.99	0.05	35,35,35,35	0
2	ZN	C	201	1/1	0.99	0.04	28,28,28,28	0
2	ZN	A	201	1/1	1.00	0.10	21,21,21,21	0

The following is a graphical depiction of the model fit to experimental electron density of all instances of the Ligand of Interest. In addition, ligands with molecular weight > 250 and outliers as shown on the geometry validation Tables will also be included. Each fit is shown from different orientation to approximate a three-dimensional view.

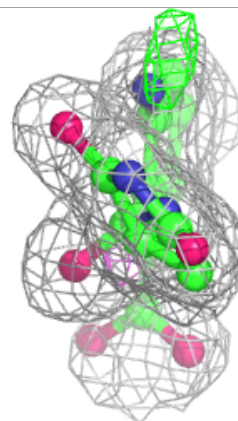
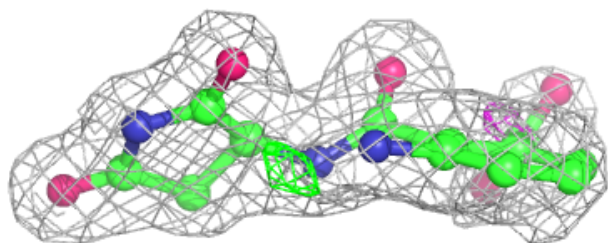
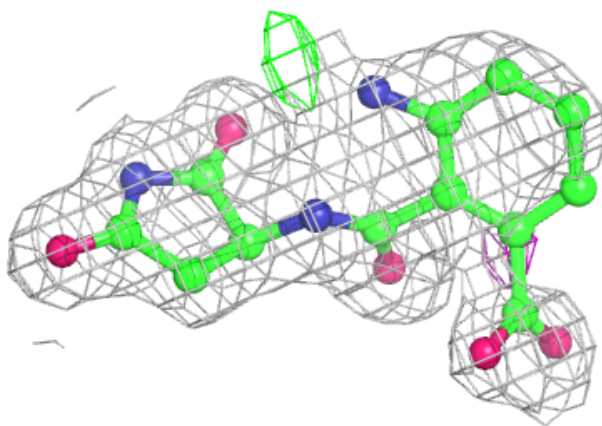


Electron density around EF2 A 202:

$2mF_o-DF_c$ (at 0.7 rmsd) in gray
 mF_o-DF_c (at 3 rmsd) in purple (negative)
and green (positive)

**Electron density around JO8 B 202:**

$2mF_o-DF_c$ (at 0.7 rmsd) in gray
 mF_o-DF_c (at 3 rmsd) in purple (negative)
and green (positive)



6.5 Other polymers [i](#)

There are no such residues in this entry.