



wwPDB X-ray Structure Validation Summary Report ⓘ

Sep 17, 2023 – 02:55 AM EDT

PDB ID : 4QWS
Title : yCP beta5-C63F mutant in complex with carfilzomib
Authors : Huber, E.M.; Heinemeyer, W.; Groll, M.
Deposited on : 2014-07-17
Resolution : 3.00 Å(reported)

This is a wwPDB X-ray Structure Validation Summary Report for a publicly released PDB entry.

We welcome your comments at validation@mail.wwpdb.org

A user guide is available at

<https://www.wwpdb.org/validation/2017/XrayValidationReportHelp>

with specific help available everywhere you see the ⓘ symbol.

The types of validation reports are described at

<http://www.wwpdb.org/validation/2017/FAQs#types>.

The following versions of software and data (see [references ⓘ](#)) were used in the production of this report:

MolProbity : 4.02b-467
Mogul : 1.8.5 (274361), CSD as541be (2020)
Xtriage (Phenix) : 1.13
EDS : 2.35.1
buster-report : 1.1.7 (2018)
Percentile statistics : 20191225.v01 (using entries in the PDB archive December 25th 2019)
Refmac : 5.8.0158
CCP4 : 7.0.044 (Gargrove)
Ideal geometry (proteins) : Engh & Huber (2001)
Ideal geometry (DNA, RNA) : Parkinson et al. (1996)
Validation Pipeline (wwPDB-VP) : 2.35.1

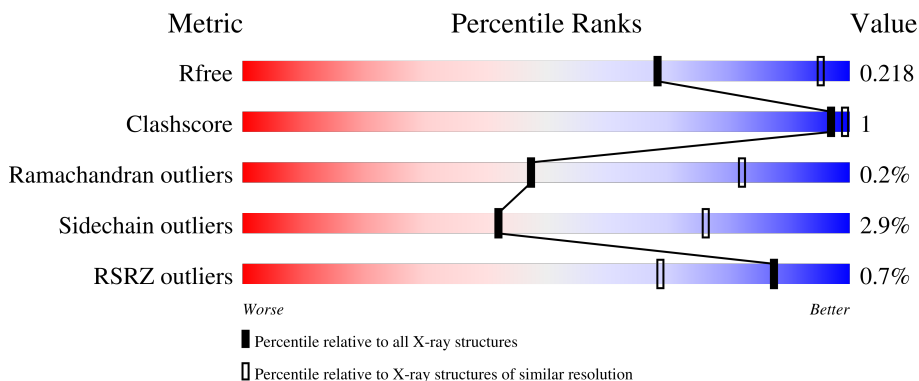
1 Overall quality at a glance

The following experimental techniques were used to determine the structure:

X-RAY DIFFRACTION

The reported resolution of this entry is 3.00 Å.

Percentile scores (ranging between 0-100) for global validation metrics of the entry are shown in the following graphic. The table shows the number of entries on which the scores are based.



Metric	Whole archive (#Entries)	Similar resolution (#Entries, resolution range(Å))
R_{free}	130704	2092 (3.00-3.00)
Clashscore	141614	2416 (3.00-3.00)
Ramachandran outliers	138981	2333 (3.00-3.00)
Sidechain outliers	138945	2336 (3.00-3.00)
RSRZ outliers	127900	1990 (3.00-3.00)

The table below summarises the geometric issues observed across the polymeric chains and their fit to the electron density. The red, orange, yellow and green segments of the lower bar indicate the fraction of residues that contain outliers for ≥ 3 , 2, 1 and 0 types of geometric quality criteria respectively. A grey segment represents the fraction of residues that are not modelled. The numeric value for each fraction is indicated below the corresponding segment, with a dot representing fractions $\leq 5\%$. The upper red bar (where present) indicates the fraction of residues that have poor fit to the electron density. The numeric value is given above the bar.

Mol	Chain	Length	Quality of chain
1	A	250	98%
1	O	250	97%
2	B	258	90% 5%
2	P	258	90% 5%
3	C	254	89% 6%

Continued on next page...

Continued from previous page...

Mol	Chain	Length	Quality of chain
3	Q	254	4% 89% 6%
4	D	260	87% 10%
4	R	260	87% 10%
5	E	234	94% 5%
5	S	234	93% 6%
6	F	288	81% 16%
6	T	288	81% 16%
7	G	252	91% 5%
7	U	252	90% 5%
8	H	232	91% 5%
8	V	232	91% 5%
9	I	205	96% .
9	W	205	96% .
10	J	198	% 94% .
10	X	198	% 94% .
11	K	212	94% 5%
11	Y	212	94% 6%
12	L	222	95% 5%
12	Z	222	95% 5%
13	M	246	91% 5%
13	a	246	92% 5%
14	N	196	98% .
14	b	196	99% .

2 Entry composition

There are 19 unique types of molecules in this entry. The entry contains 49824 atoms, of which 0 are hydrogens and 0 are deuteriums.

In the tables below, the ZeroOcc column contains the number of atoms modelled with zero occupancy, the AltConf column contains the number of residues with at least one atom in alternate conformation and the Trace column contains the number of residues modelled with at most 2 atoms.

- Molecule 1 is a protein called Proteasome subunit alpha type-2.

Mol	Chain	Residues	Atoms					ZeroOcc	AltConf	Trace
			Total	C	N	O	S			
1	A	250	Total	C	N	O	S	0	0	0
			1915	1219	315	377	4			
1	O	250	Total	C	N	O	S	0	0	0
			1915	1219	315	377	4			

- Molecule 2 is a protein called Proteasome subunit alpha type-3.

Mol	Chain	Residues	Atoms					ZeroOcc	AltConf	Trace
			Total	C	N	O	S			
2	B	244	Total	C	N	O	S	0	0	0
			1904	1201	321	379	3			
2	P	244	Total	C	N	O	S	0	0	0
			1904	1201	321	379	3			

- Molecule 3 is a protein called Proteasome subunit alpha type-4.

Mol	Chain	Residues	Atoms					ZeroOcc	AltConf	Trace
			Total	C	N	O	S			
3	C	240	Total	C	N	O	S	0	0	0
			1881	1176	329	372	4			
3	Q	240	Total	C	N	O	S	0	0	0
			1881	1176	329	372	4			

- Molecule 4 is a protein called Proteasome subunit alpha type-5.

Mol	Chain	Residues	Atoms					ZeroOcc	AltConf	Trace
			Total	C	N	O	S			
4	D	235	Total	C	N	O	S	0	0	0
			1813	1136	304	366	7			
4	R	235	Total	C	N	O	S	0	0	0
			1813	1136	304	366	7			

- Molecule 5 is a protein called Proteasome subunit alpha type-6.

Mol	Chain	Residues	Atoms					ZeroOcc	AltConf	Trace
5	E	231	Total	C	N	O	S	0	0	0
			1773	1114	307	348	4			
5	S	231	Total	C	N	O	S	0	0	0
			1773	1114	307	348	4			

- Molecule 6 is a protein called Probable proteasome subunit alpha type-7.

Mol	Chain	Residues	Atoms					ZeroOcc	AltConf	Trace
6	F	243	Total	C	N	O	S	0	0	0
			1892	1203	329	356	4			
6	T	243	Total	C	N	O	S	0	0	0
			1892	1203	329	356	4			

- Molecule 7 is a protein called Proteasome subunit alpha type-1.

Mol	Chain	Residues	Atoms					ZeroOcc	AltConf	Trace
7	G	241	Total	C	N	O	S	0	0	0
			1907	1214	320	365	8			
7	U	241	Total	C	N	O	S	0	0	0
			1906	1214	320	364	8			

- Molecule 8 is a protein called Proteasome subunit beta type-2.

Mol	Chain	Residues	Atoms					ZeroOcc	AltConf	Trace
8	H	222	Total	C	N	O	S	0	0	0
			1684	1061	293	323	7			
8	V	222	Total	C	N	O	S	0	0	0
			1684	1061	293	323	7			

- Molecule 9 is a protein called Proteasome subunit beta type-3.

Mol	Chain	Residues	Atoms					ZeroOcc	AltConf	Trace
9	I	204	Total	C	N	O	S	0	0	0
			1581	1010	258	305	8			
9	W	204	Total	C	N	O	S	0	0	0
			1581	1010	258	305	8			

- Molecule 10 is a protein called Proteasome subunit beta type-4.

Mol	Chain	Residues	Atoms					ZeroOcc	AltConf	Trace
10	J	195	Total	C	N	O	S	0	0	0
			1561	992	264	299	6			

Continued on next page...

Continued from previous page...

Mol	Chain	Residues	Atoms					ZeroOcc	AltConf	Trace
			Total	C	N	O	S			
10	X	195	1561	992	264	299	6	0	0	0

- Molecule 11 is a protein called Proteasome subunit beta type-5.

Mol	Chain	Residues	Atoms					ZeroOcc	AltConf	Trace
			Total	C	N	O	S			
11	K	212	1649	1051	280	312	6	0	0	0
11	Y	212	1649	1051	280	312	6	0	0	0

There are 2 discrepancies between the modelled and reference sequences:

Chain	Residue	Modelled	Actual	Comment	Reference
K	63	PHE	CYS	ENGINEERED MUTATION	UNP P30656
Y	63	PHE	CYS	ENGINEERED MUTATION	UNP P30656

- Molecule 12 is a protein called Proteasome subunit beta type-6.

Mol	Chain	Residues	Atoms					ZeroOcc	AltConf	Trace
			Total	C	N	O	S			
12	L	222	1757	1115	303	335	4	0	0	0
12	Z	222	1757	1115	303	335	4	0	0	0

- Molecule 13 is a protein called Proteasome subunit beta type-7.

Mol	Chain	Residues	Atoms					ZeroOcc	AltConf	Trace
			Total	C	N	O	S			
13	M	233	1824	1154	312	351	7	0	0	0
13	a	233	1824	1154	312	351	7	0	0	0

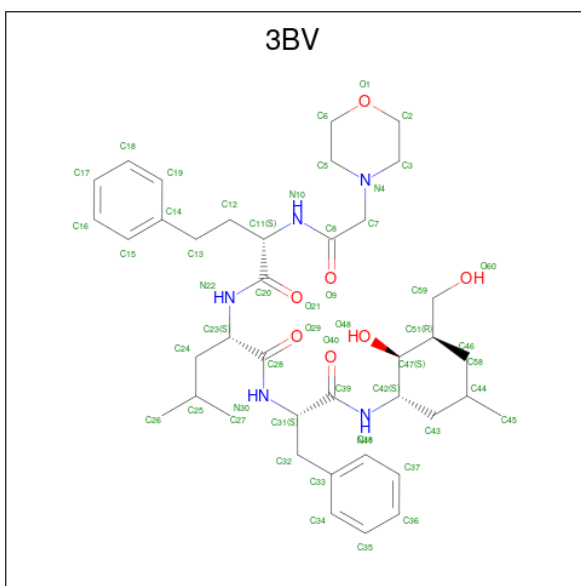
- Molecule 14 is a protein called Proteasome subunit beta type-1.

Mol	Chain	Residues	Atoms					ZeroOcc	AltConf	Trace
			Total	C	N	O	S			
14	N	196	1512	955	250	300	7	0	0	0
14	b	196	1512	955	250	300	7	0	0	0

- Molecule 15 is CHLORIDE ION (three-letter code: CL) (formula: Cl).

Mol	Chain	Residues	Atoms	ZeroOcc	AltConf
15	G	1	Total Cl 1 1	0	0
15	N	1	Total Cl 1 1	0	0
15	U	1	Total Cl 1 1	0	0
15	b	1	Total Cl 1 1	0	0

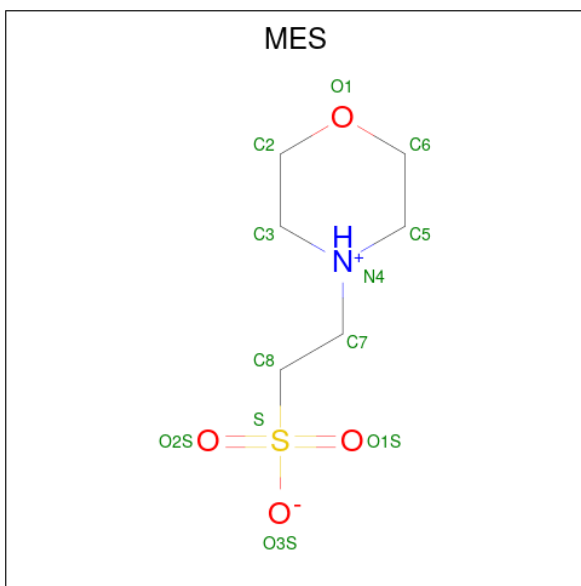
- Molecule 16 is N-{(2S)-2-[(morpholin-4-ylacetyl)amino]-4-phenylbutanoyl}-L-leucyl-N-[(2R,3S,4S)-1,3-dihydroxy-2,6-dimethylheptan-4-yl]-L-phenylalaninamide (three-letter code: 3BV) (formula: C₄₀H₆₁N₅O₇).



Mol	Chain	Residues	Atoms	ZeroOcc	AltConf
16	H	1	Total C N O 52 40 5 7	0	0
16	K	1	Total C N O 52 40 5 7	0	0
16	N	1	Total C N O 52 40 5 7	0	0
16	V	1	Total C N O 52 40 5 7	0	0
16	Y	1	Total C N O 52 40 5 7	0	0
16	b	1	Total C N O 52 40 5 7	0	0

- Molecule 17 is 2-(N-MORPHOLINO)-ETHANESULFONIC ACID (three-letter code: MES)

(formula: C₆H₁₃NO₄S).



Mol	Chain	Residues	Atoms					ZeroOcc	AltConf
17	H	1	Total	C	N	O	S	0	0
			12	6	1	4	1		
17	K	1	Total	C	N	O	S	0	0
			12	6	1	4	1		
17	V	1	Total	C	N	O	S	0	0
			12	6	1	4	1		
17	Y	1	Total	C	N	O	S	0	0
			12	6	1	4	1		

- Molecule 18 is MAGNESIUM ION (three-letter code: MG) (formula: Mg).

Mol	Chain	Residues	Atoms		ZeroOcc	AltConf
18	I	1	Total	Mg	0	0
			1	1		
18	K	1	Total	Mg	0	0
			1	1		
18	N	1	Total	Mg	0	0
			1	1		
18	Y	1	Total	Mg	0	0
			1	1		

- Molecule 19 is water.

Mol	Chain	Residues	Atoms		ZeroOcc	AltConf
19	A	4	Total	O	0	0
			4	4		

Continued on next page...

Continued from previous page...

Mol	Chain	Residues	Atoms	ZeroOcc	AltConf
19	B	8	Total O 8 8	0	0
19	C	5	Total O 5 5	0	0
19	D	4	Total O 4 4	0	0
19	E	3	Total O 3 3	0	0
19	F	2	Total O 2 2	0	0
19	G	5	Total O 5 5	0	0
19	H	6	Total O 6 6	0	0
19	I	2	Total O 2 2	0	0
19	J	10	Total O 10 10	0	0
19	K	4	Total O 4 4	0	0
19	L	9	Total O 9 9	0	0
19	M	8	Total O 8 8	0	0
19	N	3	Total O 3 3	0	0
19	O	4	Total O 4 4	0	0
19	P	5	Total O 5 5	0	0
19	Q	6	Total O 6 6	0	0
19	R	3	Total O 3 3	0	0
19	S	4	Total O 4 4	0	0
19	T	4	Total O 4 4	0	0
19	U	3	Total O 3 3	0	0
19	V	8	Total O 8 8	0	0

Continued on next page...

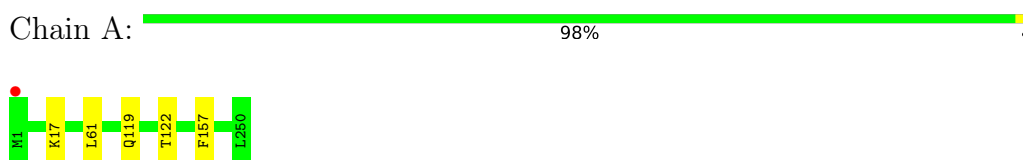
Continued from previous page...

Mol	Chain	Residues	Atoms	ZeroOcc	AltConf
19	W	1	Total O 1 1	0	0
19	X	9	Total O 9 9	0	0
19	Y	7	Total O 7 7	0	0
19	Z	8	Total O 8 8	0	0
19	a	8	Total O 8 8	0	0
19	b	8	Total O 8 8	0	0

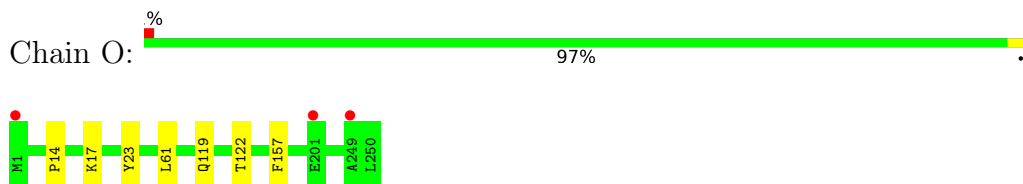
3 Residue-property plots [i](#)

These plots are drawn for all protein, RNA, DNA and oligosaccharide chains in the entry. The first graphic for a chain summarises the proportions of the various outlier classes displayed in the second graphic. The second graphic shows the sequence view annotated by issues in geometry and electron density. Residues are color-coded according to the number of geometric quality criteria for which they contain at least one outlier: green = 0, yellow = 1, orange = 2 and red = 3 or more. A red dot above a residue indicates a poor fit to the electron density ($RSRZ > 2$). Stretches of 2 or more consecutive residues without any outlier are shown as a green connector. Residues present in the sample, but not in the model, are shown in grey.

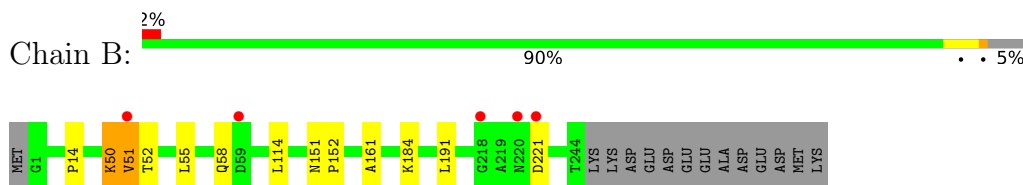
- Molecule 1: Proteasome subunit alpha type-2



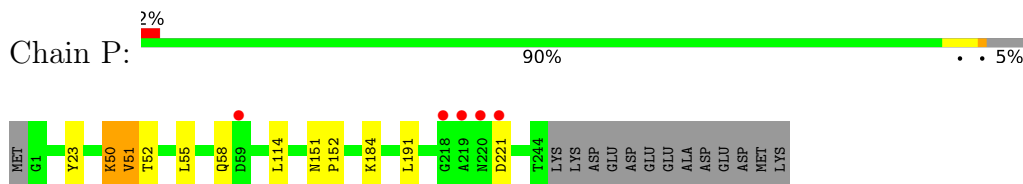
- Molecule 1: Proteasome subunit alpha type-2



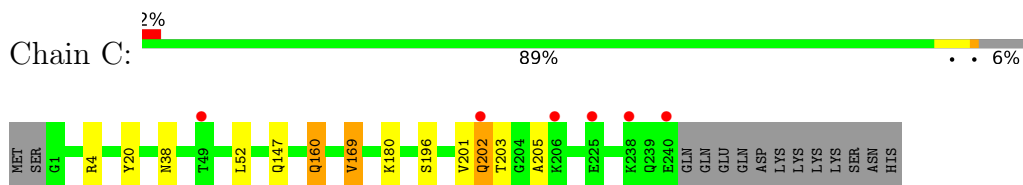
- Molecule 2: Proteasome subunit alpha type-3



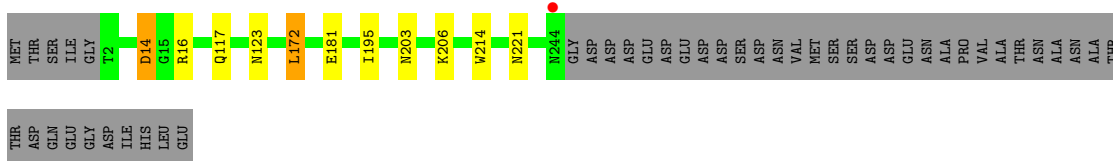
- Molecule 2: Proteasome subunit alpha type-3



- Molecule 3: Proteasome subunit alpha type-4



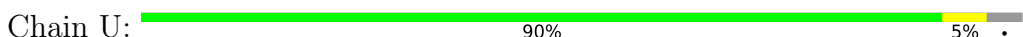
- Molecule 3: Proteasome subunit alpha type-4



• Molecule 7: Proteasome subunit alpha type-1



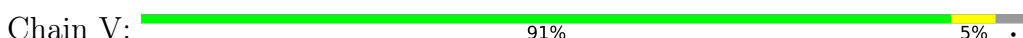
• Molecule 7: Proteasome subunit alpha type-1



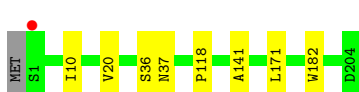
• Molecule 8: Proteasome subunit beta type-2



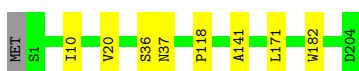
• Molecule 8: Proteasome subunit beta type-2



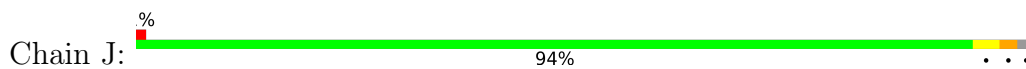
• Molecule 9: Proteasome subunit beta type-3



• Molecule 9: Proteasome subunit beta type-3



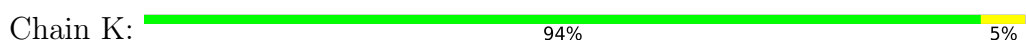
• Molecule 10: Proteasome subunit beta type-4



- Molecule 10: Proteasome subunit beta type-4



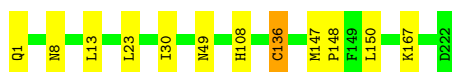
- Molecule 11: Proteasome subunit beta type-5



- Molecule 11: Proteasome subunit beta type-5



- Molecule 12: Proteasome subunit beta type-6



- Molecule 12: Proteasome subunit beta type-6

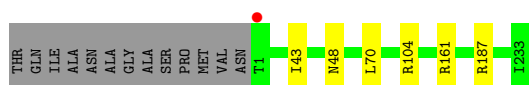


- Molecule 13: Proteasome subunit beta type-7



- Molecule 13: Proteasome subunit beta type-7

Chain a:  92% • 5%



- Molecule 14: Proteasome subunit beta type-1

Chain N:  98% •



- Molecule 14: Proteasome subunit beta type-1

Chain b:  99% •



4 Data and refinement statistics

Property	Value	Source
Space group	P 1 21 1	Depositor
Cell constants a, b, c, α , β , γ	137.68Å 300.99Å 145.99Å 90.00° 112.96° 90.00°	Depositor
Resolution (Å)	15.00 – 3.00 15.00 – 3.00	Depositor EDS
% Data completeness (in resolution range)	98.1 (15.00-3.00) 98.1 (15.00-3.00)	Depositor EDS
R_{merge}	0.07	Depositor
R_{sym}	(Not available)	Depositor
$\langle I/\sigma(I) \rangle$ ¹	2.98 (at 3.01Å)	Xtrriage
Refinement program	REFMAC	Depositor
R, R_{free}	0.174 , 0.214 0.182 , 0.218	Depositor DCC
R_{free} test set	10591 reflections (5.00%)	wwPDB-VP
Wilson B-factor (Å ²)	73.9	Xtrriage
Anisotropy	0.138	Xtrriage
Bulk solvent k_{sol} (e/Å ³), B_{sol} (Å ²)	0.29 , 46.4	EDS
L-test for twinning ²	$\langle L \rangle = 0.51$, $\langle L^2 \rangle = 0.34$	Xtrriage
Estimated twinning fraction	No twinning to report.	Xtrriage
F_o, F_c correlation	0.95	EDS
Total number of atoms	49824	wwPDB-VP
Average B, all atoms (Å ²)	80.0	wwPDB-VP

Xtrriage's analysis on translational NCS is as follows: *The largest off-origin peak in the Patterson function is 2.67% of the height of the origin peak. No significant pseudotranslation is detected.*

¹Intensities estimated from amplitudes.

²Theoretical values of $\langle |L| \rangle$, $\langle L^2 \rangle$ for acentric reflections are 0.5, 0.333 respectively for untwinned datasets, and 0.375, 0.2 for perfectly twinned datasets.

5 Model quality [i](#)

5.1 Standard geometry [i](#)

Bond lengths and bond angles in the following residue types are not validated in this section: 3BV, MES, CL, MG

The Z score for a bond length (or angle) is the number of standard deviations the observed value is removed from the expected value. A bond length (or angle) with $|Z| > 5$ is considered an outlier worth inspection. RMSZ is the root-mean-square of all Z scores of the bond lengths (or angles).

Mol	Chain	Bond lengths		Bond angles	
		RMSZ	# Z >5	RMSZ	# Z >5
1	A	0.28	0/1952	0.47	0/2642
1	O	0.28	0/1952	0.47	0/2642
2	B	0.28	0/1934	0.48	0/2618
2	P	0.28	0/1934	0.48	0/2618
3	C	0.28	0/1910	0.50	0/2586
3	Q	0.28	0/1910	0.50	0/2586
4	D	0.28	0/1837	0.47	0/2475
4	R	0.28	0/1837	0.47	0/2475
5	E	0.28	0/1800	0.47	0/2433
5	S	0.28	0/1800	0.46	0/2433
6	F	0.28	0/1932	0.45	0/2609
6	T	0.28	0/1932	0.45	0/2609
7	G	0.28	0/1945	0.46	0/2634
7	U	0.28	0/1944	0.46	0/2632
8	H	0.26	0/1715	0.47	0/2326
8	V	0.27	0/1715	0.46	0/2326
9	I	0.29	0/1611	0.48	0/2174
9	W	0.29	0/1611	0.48	0/2174
10	J	0.28	0/1589	0.48	0/2142
10	X	0.28	0/1589	0.48	0/2142
11	K	0.28	0/1687	0.49	0/2282
11	Y	0.28	0/1687	0.49	0/2282
12	L	0.29	0/1795	0.47	0/2420
12	Z	0.28	0/1795	0.47	0/2420
13	M	0.28	0/1855	0.51	0/2514
13	a	0.28	0/1855	0.51	0/2514
14	N	0.27	0/1541	0.47	0/2087
14	b	0.27	0/1541	0.47	0/2087
All	All	0.28	0/50205	0.48	0/67882

There are no bond length outliers.

There are no bond angle outliers.

There are no chirality outliers.

There are no planarity outliers.

5.2 Too-close contacts [i](#)

In the following table, the Non-H and H(model) columns list the number of non-hydrogen atoms and hydrogen atoms in the chain respectively. The H(added) column lists the number of hydrogen atoms added and optimized by MolProbity. The Clashes column lists the number of clashes within the asymmetric unit, whereas Symm-Clashes lists symmetry-related clashes.

Mol	Chain	Non-H	H(model)	H(added)	Clashes	Symm-Clashes
1	A	1915	0	1929	1	0
1	O	1915	0	1929	3	0
2	B	1904	0	1904	6	0
2	P	1904	0	1904	4	0
3	C	1881	0	1895	7	0
3	Q	1881	0	1895	8	0
4	D	1813	0	1797	0	0
4	R	1813	0	1797	1	0
5	E	1773	0	1775	2	0
5	S	1773	0	1775	3	0
6	F	1892	0	1883	1	0
6	T	1892	0	1883	2	0
7	G	1907	0	1901	3	0
7	U	1906	0	1901	4	0
8	H	1684	0	1686	5	0
8	V	1684	0	1686	5	0
9	I	1581	0	1574	3	0
9	W	1581	0	1574	3	0
10	J	1561	0	1569	5	0
10	X	1561	0	1569	3	0
11	K	1649	0	1597	6	0
11	Y	1649	0	1597	5	0
12	L	1757	0	1711	5	0
12	Z	1757	0	1711	3	0
13	M	1824	0	1832	2	0
13	a	1824	0	1832	0	0
14	N	1512	0	1478	1	0
14	b	1512	0	1478	0	0
15	G	1	0	0	0	0
15	N	1	0	0	0	0
15	U	1	0	0	0	0

Continued on next page...

Continued from previous page...

Mol	Chain	Non-H	H(model)	H(added)	Clashes	Symm-Clashes
15	b	1	0	0	0	0
16	H	52	0	59	3	0
16	K	52	0	59	4	0
16	N	52	0	59	1	0
16	V	52	0	59	3	0
16	Y	52	0	59	2	0
16	b	52	0	59	0	0
17	H	12	0	13	0	0
17	K	12	0	13	1	0
17	V	12	0	13	1	0
17	Y	12	0	13	0	0
18	I	1	0	0	0	0
18	K	1	0	0	0	0
18	N	1	0	0	0	0
18	Y	1	0	0	0	0
19	A	4	0	0	0	0
19	B	8	0	0	0	0
19	C	5	0	0	0	0
19	D	4	0	0	0	0
19	E	3	0	0	0	0
19	F	2	0	0	0	0
19	G	5	0	0	0	0
19	H	6	0	0	0	0
19	I	2	0	0	0	0
19	J	10	0	0	0	0
19	K	4	0	0	0	0
19	L	9	0	0	0	0
19	M	8	0	0	0	0
19	N	3	0	0	0	0
19	O	4	0	0	0	0
19	P	5	0	0	0	0
19	Q	6	0	0	4	0
19	R	3	0	0	0	0
19	S	4	0	0	0	0
19	T	4	0	0	0	0
19	U	3	0	0	0	0
19	V	8	0	0	0	0
19	W	1	0	0	0	0
19	X	9	0	0	0	0
19	Y	7	0	0	0	0
19	Z	8	0	0	0	0
19	a	8	0	0	0	0

Continued on next page...

Continued from previous page...

Mol	Chain	Non-H	H(model)	H(added)	Clashes	Symm-Clashes
19	b	8	0	0	0	0
All	All	49824	0	49468	87	0

The all-atom clashscore is defined as the number of clashes found per 1000 atoms (including hydrogen atoms). The all-atom clashscore for this structure is 1.

The worst 5 of 87 close contacts within the same asymmetric unit are listed below, sorted by their clash magnitude.

Atom-1	Atom-2	Interatomic distance (Å)	Clash overlap (Å)
3:Q:223:SER:N	19:Q:305:HOH:O	1.97	0.70
10:J:23:ARG:NH1	11:K:118:ASP:OD2	2.25	0.70
8:V:49:ALA:HB2	16:V:301:3BV:H52	1.79	0.64
8:H:49:ALA:HB2	16:H:301:3BV:H52	1.80	0.64
8:V:168:GLY:O	16:V:301:3BV:H57	2.01	0.61

There are no symmetry-related clashes.

5.3 Torsion angles [i](#)

5.3.1 Protein backbone [i](#)

In the following table, the Percentiles column shows the percent Ramachandran outliers of the chain as a percentile score with respect to all X-ray entries followed by that with respect to entries of similar resolution.

The Analysed column shows the number of residues for which the backbone conformation was analysed, and the total number of residues.

Mol	Chain	Analysed	Favoured	Allowed	Outliers	Percentiles	
1	A	248/250 (99%)	242 (98%)	6 (2%)	0	100	100
1	O	248/250 (99%)	242 (98%)	6 (2%)	0	100	100
2	B	242/258 (94%)	234 (97%)	6 (2%)	2 (1%)	19	57
2	P	242/258 (94%)	233 (96%)	7 (3%)	2 (1%)	19	57
3	C	238/254 (94%)	230 (97%)	6 (2%)	2 (1%)	19	57
3	Q	238/254 (94%)	230 (97%)	6 (2%)	2 (1%)	19	57
4	D	231/260 (89%)	226 (98%)	5 (2%)	0	100	100
4	R	231/260 (89%)	225 (97%)	6 (3%)	0	100	100

Continued on next page...

Continued from previous page...

Mol	Chain	Analysed	Favoured	Allowed	Outliers	Percentiles	
5	E	229/234 (98%)	223 (97%)	6 (3%)	0	100	100
5	S	229/234 (98%)	223 (97%)	6 (3%)	0	100	100
6	F	241/288 (84%)	234 (97%)	7 (3%)	0	100	100
6	T	241/288 (84%)	234 (97%)	7 (3%)	0	100	100
7	G	239/252 (95%)	234 (98%)	5 (2%)	0	100	100
7	U	239/252 (95%)	234 (98%)	5 (2%)	0	100	100
8	H	220/232 (95%)	213 (97%)	7 (3%)	0	100	100
8	V	220/232 (95%)	213 (97%)	7 (3%)	0	100	100
9	I	202/205 (98%)	194 (96%)	8 (4%)	0	100	100
9	W	202/205 (98%)	194 (96%)	8 (4%)	0	100	100
10	J	193/198 (98%)	187 (97%)	5 (3%)	1 (0%)	29	68
10	X	193/198 (98%)	187 (97%)	5 (3%)	1 (0%)	29	68
11	K	210/212 (99%)	207 (99%)	3 (1%)	0	100	100
11	Y	210/212 (99%)	207 (99%)	3 (1%)	0	100	100
12	L	220/222 (99%)	216 (98%)	4 (2%)	0	100	100
12	Z	220/222 (99%)	216 (98%)	4 (2%)	0	100	100
13	M	231/246 (94%)	221 (96%)	10 (4%)	0	100	100
13	a	231/246 (94%)	221 (96%)	10 (4%)	0	100	100
14	N	194/196 (99%)	188 (97%)	6 (3%)	0	100	100
14	b	194/196 (99%)	188 (97%)	6 (3%)	0	100	100
All	All	6276/6614 (95%)	6096 (97%)	170 (3%)	10 (0%)	47	82

5 of 10 Ramachandran outliers are listed below:

Mol	Chain	Res	Type
2	B	51	VAL
3	C	202	GLN
2	P	51	VAL
3	Q	202	GLN
3	C	205	ALA

5.3.2 Protein sidechains [i](#)

In the following table, the Percentiles column shows the percent sidechain outliers of the chain as a percentile score with respect to all X-ray entries followed by that with respect to entries of similar

resolution.

The Analysed column shows the number of residues for which the sidechain conformation was analysed, and the total number of residues.

Mol	Chain	Analysed	Rotameric	Outliers	Percentiles	
1	A	209/209 (100%)	206 (99%)	3 (1%)	67	88
1	O	209/209 (100%)	206 (99%)	3 (1%)	67	88
2	B	203/216 (94%)	196 (97%)	7 (3%)	37	72
2	P	203/216 (94%)	196 (97%)	7 (3%)	37	72
3	C	212/226 (94%)	205 (97%)	7 (3%)	38	73
3	Q	212/226 (94%)	205 (97%)	7 (3%)	38	73
4	D	194/215 (90%)	186 (96%)	8 (4%)	30	67
4	R	194/215 (90%)	186 (96%)	8 (4%)	30	67
5	E	190/193 (98%)	182 (96%)	8 (4%)	30	66
5	S	190/193 (98%)	182 (96%)	8 (4%)	30	66
6	F	201/239 (84%)	193 (96%)	8 (4%)	31	68
6	T	201/239 (84%)	192 (96%)	9 (4%)	27	64
7	G	206/210 (98%)	200 (97%)	6 (3%)	42	76
7	U	206/210 (98%)	200 (97%)	6 (3%)	42	76
8	H	181/190 (95%)	176 (97%)	5 (3%)	43	77
8	V	181/190 (95%)	176 (97%)	5 (3%)	43	77
9	I	172/173 (99%)	169 (98%)	3 (2%)	60	85
9	W	172/173 (99%)	169 (98%)	3 (2%)	60	85
10	J	173/175 (99%)	168 (97%)	5 (3%)	42	76
10	X	173/175 (99%)	168 (97%)	5 (3%)	42	76
11	K	169/169 (100%)	165 (98%)	4 (2%)	49	79
11	Y	169/169 (100%)	165 (98%)	4 (2%)	49	79
12	L	185/185 (100%)	180 (97%)	5 (3%)	44	77
12	Z	185/185 (100%)	179 (97%)	6 (3%)	39	74
13	M	199/208 (96%)	193 (97%)	6 (3%)	41	75
13	a	199/208 (96%)	193 (97%)	6 (3%)	41	75
14	N	162/162 (100%)	160 (99%)	2 (1%)	71	90
14	b	162/162 (100%)	160 (99%)	2 (1%)	71	90
All	All	5312/5540 (96%)	5156 (97%)	156 (3%)	42	76

5 of 156 residues with a non-rotameric sidechain are listed below:

Mol	Chain	Res	Type
6	T	203	ASN
12	Z	23	LEU
7	U	115	LEU
9	W	37	ASN
13	a	70	LEU

Sometimes sidechains can be flipped to improve hydrogen bonding and reduce clashes. 5 of 73 such sidechains are listed below:

Mol	Chain	Res	Type
6	T	123	ASN
13	a	194	ASN
6	T	240	GLN
11	Y	176	ASN
7	G	117	GLN

5.3.3 RNA [i](#)

There are no RNA molecules in this entry.

5.4 Non-standard residues in protein, DNA, RNA chains [i](#)

There are no non-standard protein/DNA/RNA residues in this entry.

5.5 Carbohydrates [i](#)

There are no monosaccharides in this entry.

5.6 Ligand geometry [i](#)

Of 18 ligands modelled in this entry, 8 are monoatomic - leaving 10 for Mogul analysis.

In the following table, the Counts columns list the number of bonds (or angles) for which Mogul statistics could be retrieved, the number of bonds (or angles) that are observed in the model and the number of bonds (or angles) that are defined in the Chemical Component Dictionary. The Link column lists molecule types, if any, to which the group is linked. The Z score for a bond length (or angle) is the number of standard deviations the observed value is removed from the expected value. A bond length (or angle) with $|Z| > 2$ is considered an outlier worth inspection. RMSZ is the root-mean-square of all Z scores of the bond lengths (or angles).

Mol	Type	Chain	Res	Link	Bond lengths			Bond angles		
					Counts	RMSZ	# Z > 2	Counts	RMSZ	# Z > 2
16	3BV	N	201	14	54,54,54	1.21	4 (7%)	68,71,71	1.32	7 (10%)
16	3BV	b	201	14	54,54,54	1.20	4 (7%)	68,71,71	1.31	7 (10%)
16	3BV	H	301	8	54,54,54	1.06	3 (5%)	68,71,71	1.46	10 (14%)
16	3BV	Y	301	11	54,54,54	1.12	3 (5%)	68,71,71	1.61	10 (14%)
17	MES	K	303	-	12,12,12	2.26	1 (8%)	14,16,16	1.38	2 (14%)
17	MES	V	302	-	12,12,12	2.19	1 (8%)	14,16,16	1.48	2 (14%)
16	3BV	V	301	8	54,54,54	1.04	3 (5%)	68,71,71	1.49	9 (13%)
17	MES	Y	303	-	12,12,12	2.21	1 (8%)	14,16,16	1.35	2 (14%)
17	MES	H	302	-	12,12,12	2.13	1 (8%)	14,16,16	1.41	3 (21%)
16	3BV	K	301	11	54,54,54	1.13	3 (5%)	68,71,71	1.63	11 (16%)

In the following table, the Chirals column lists the number of chiral outliers, the number of chiral centers analysed, the number of these observed in the model and the number defined in the Chemical Component Dictionary. Similar counts are reported in the Torsion and Rings columns. '-' means no outliers of that kind were identified.

Mol	Type	Chain	Res	Link	Chirals	Torsions	Rings
16	3BV	N	201	14	-	12/59/67/67	0/3/3/3
16	3BV	b	201	14	-	12/59/67/67	0/3/3/3
16	3BV	H	301	8	-	8/59/67/67	0/3/3/3
16	3BV	Y	301	11	-	6/59/67/67	0/3/3/3
17	MES	K	303	-	-	0/6/14/14	0/1/1/1
17	MES	V	302	-	-	0/6/14/14	0/1/1/1
16	3BV	V	301	8	-	8/59/67/67	0/3/3/3
17	MES	Y	303	-	-	0/6/14/14	0/1/1/1
17	MES	H	302	-	-	5/6/14/14	0/1/1/1
16	3BV	K	301	11	-	6/59/67/67	0/3/3/3

The worst 5 of 24 bond length outliers are listed below:

Mol	Chain	Res	Type	Atoms	Z	Observed(Å)	Ideal(Å)
17	K	303	MES	C8-S	-7.50	1.66	1.77
17	Y	303	MES	C8-S	-7.35	1.67	1.77
17	V	302	MES	C8-S	-7.24	1.67	1.77
17	H	302	MES	C8-S	-7.00	1.67	1.77
16	N	201	3BV	C51-C47	4.74	1.61	1.53

The worst 5 of 63 bond angle outliers are listed below:

Mol	Chain	Res	Type	Atoms	Z	Observed(°)	Ideal(°)
16	K	301	3BV	C43-C42-N41	-5.87	102.60	110.18
16	V	301	3BV	C43-C42-N41	-5.82	102.65	110.18
16	H	301	3BV	C43-C42-N41	-5.81	102.67	110.18
16	Y	301	3BV	C43-C42-N41	-5.65	102.87	110.18
16	K	301	3BV	C7-N4-C5	4.93	118.75	111.09

There are no chirality outliers.

5 of 57 torsion outliers are listed below:

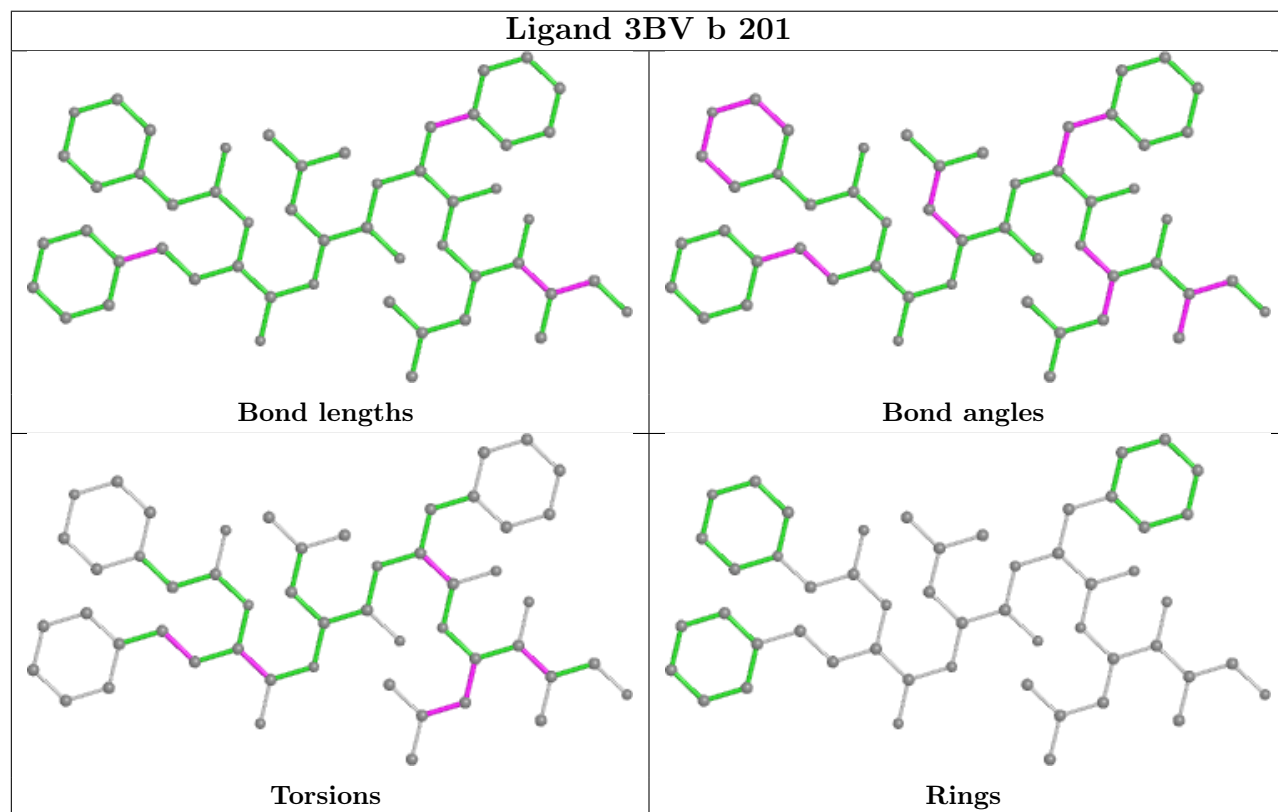
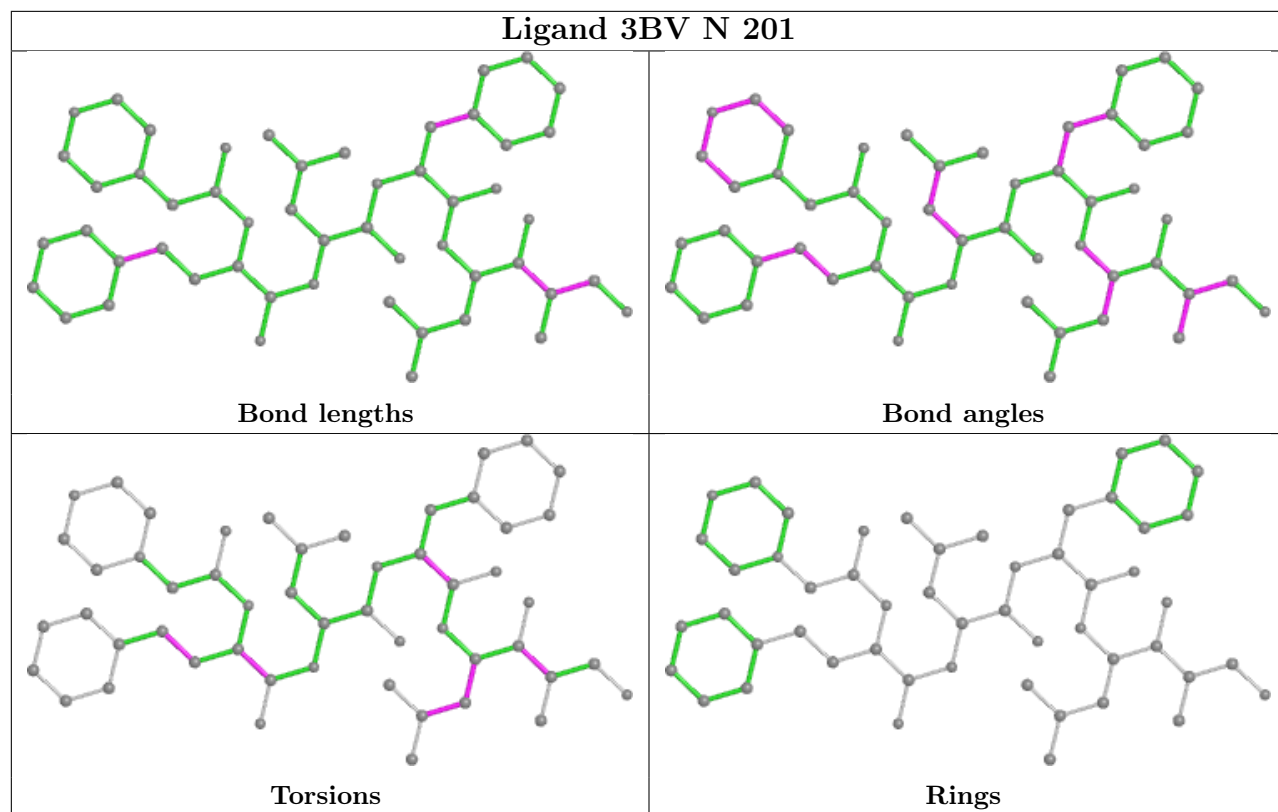
Mol	Chain	Res	Type	Atoms
16	H	301	3BV	C47-C42-C43-C44
16	K	301	3BV	C8-C7-N4-C5
16	K	301	3BV	N41-C42-C43-C44
16	K	301	3BV	C47-C42-C43-C44
16	N	201	3BV	N41-C42-C43-C44

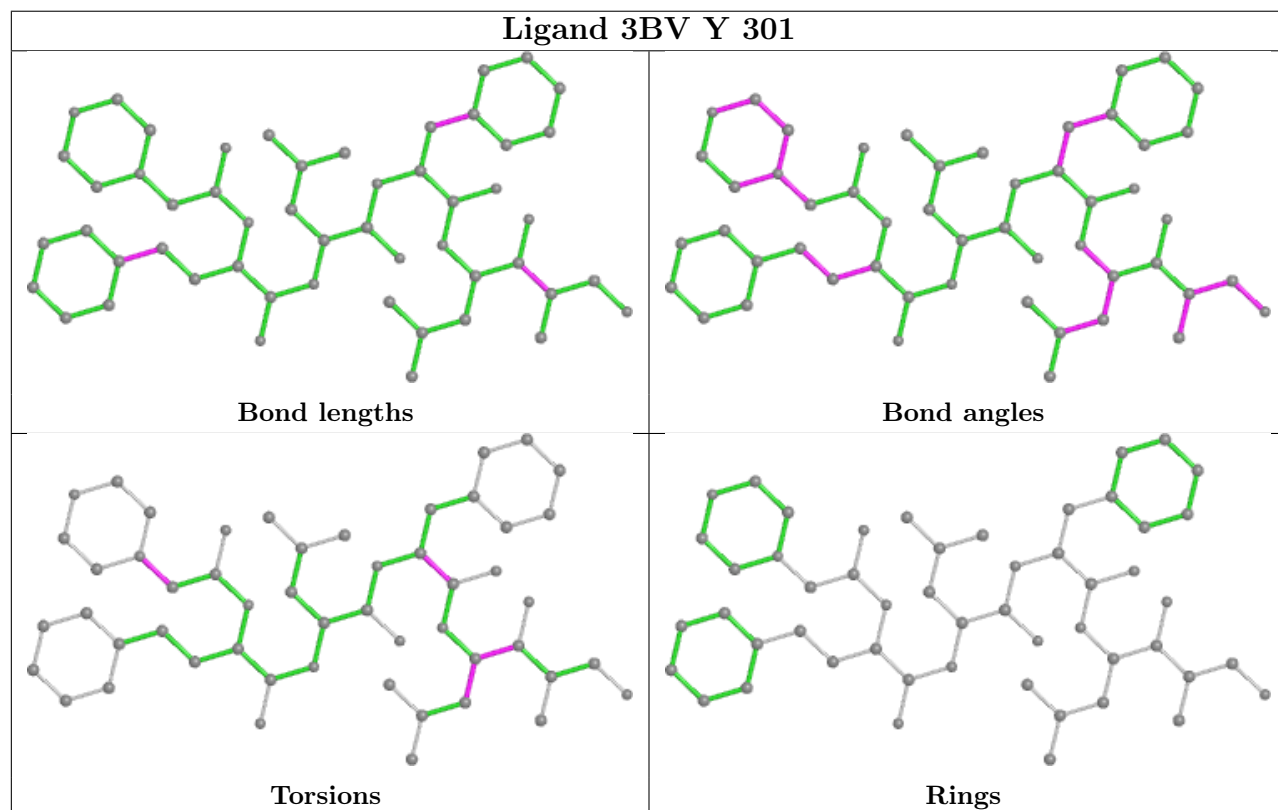
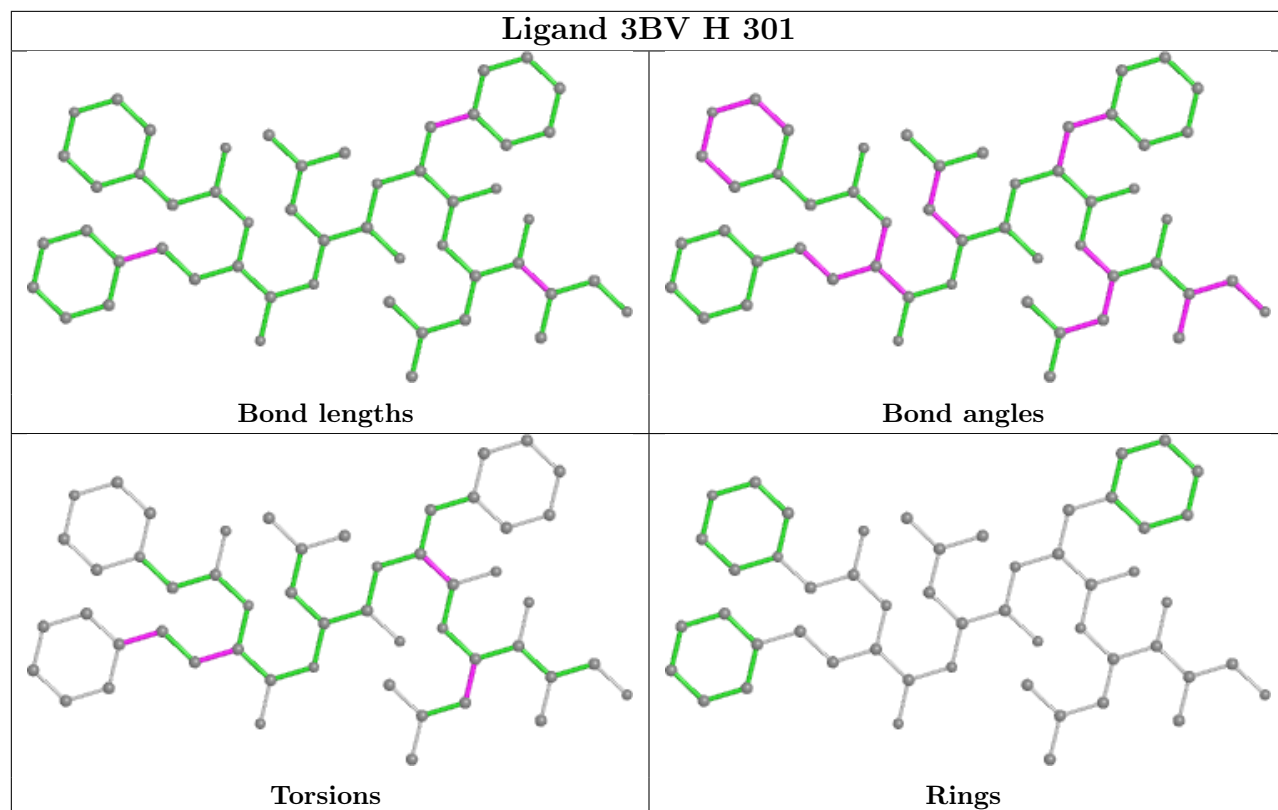
There are no ring outliers.

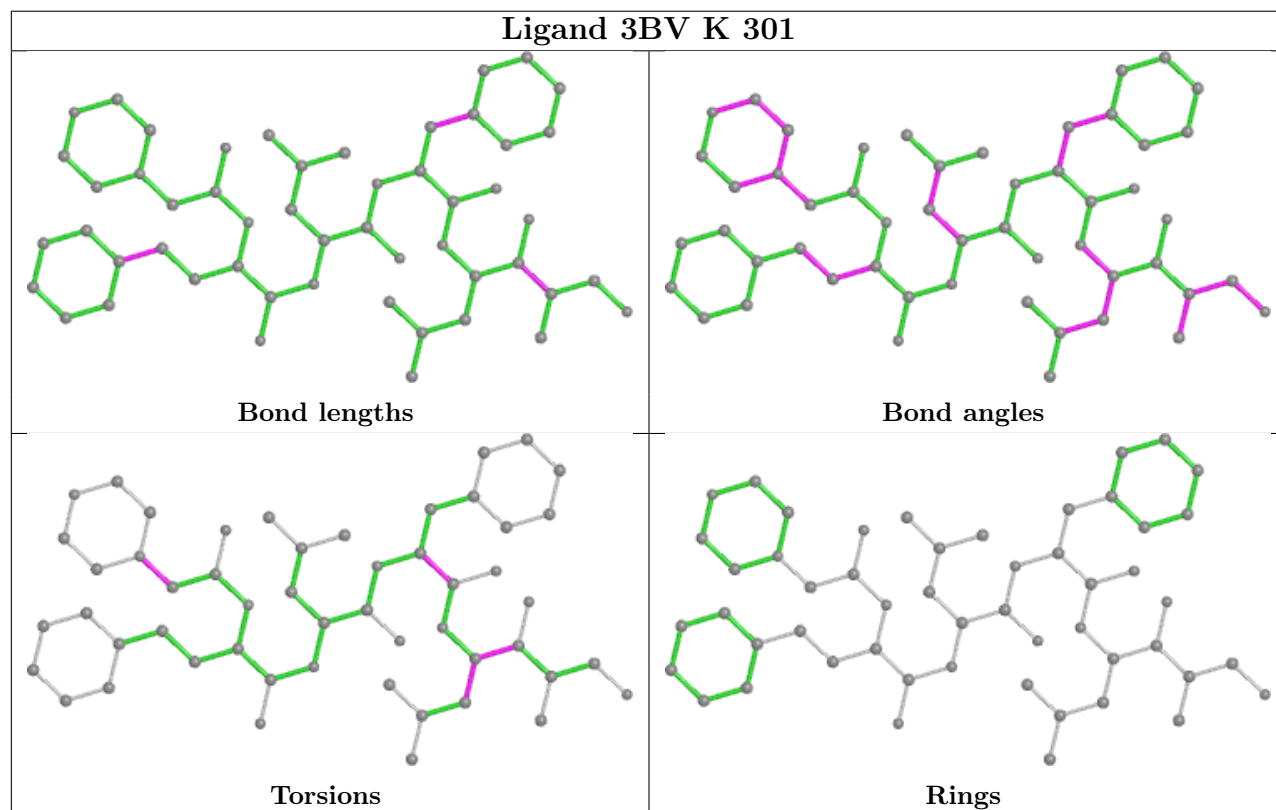
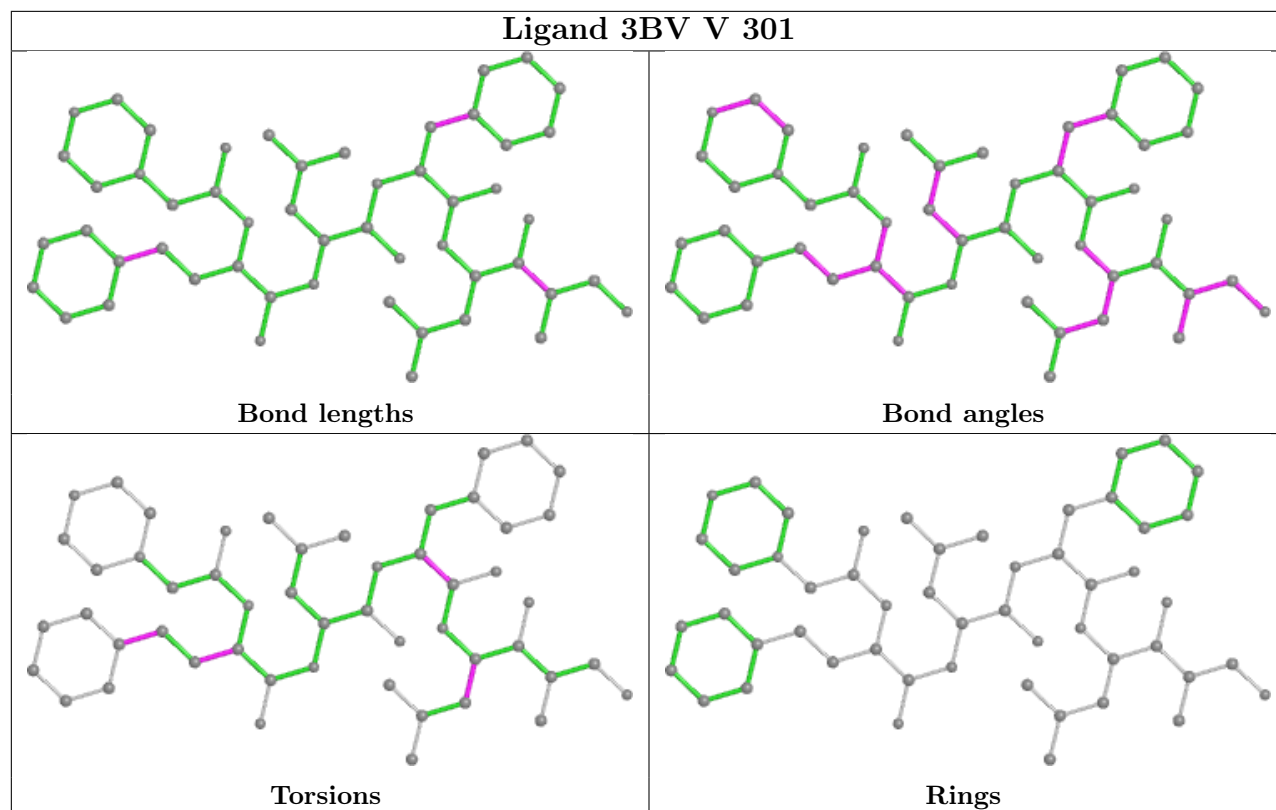
7 monomers are involved in 14 short contacts:

Mol	Chain	Res	Type	Clashes	Symm-Clashes
16	N	201	3BV	1	0
16	H	301	3BV	3	0
16	Y	301	3BV	2	0
17	K	303	MES	1	0
17	V	302	MES	1	0
16	V	301	3BV	3	0
16	K	301	3BV	4	0

The following is a two-dimensional graphical depiction of Mogul quality analysis of bond lengths, bond angles, torsion angles, and ring geometry for all instances of the Ligand of Interest. In addition, ligands with molecular weight > 250 and outliers as shown on the validation Tables will also be included. For torsion angles, if less than 5% of the Mogul distribution of torsion angles is within 10 degrees of the torsion angle in question, then that torsion angle is considered an outlier. Any bond that is central to one or more torsion angles identified as an outlier by Mogul will be highlighted in the graph. For rings, the root-mean-square deviation (RMSD) between the ring in question and similar rings identified by Mogul is calculated over all ring torsion angles. If the average RMSD is greater than 60 degrees and the minimal RMSD between the ring in question and any Mogul-identified rings is also greater than 60 degrees, then that ring is considered an outlier. The outliers are highlighted in purple. The color gray indicates Mogul did not find sufficient equivalents in the CSD to analyse the geometry.







5.7 Other polymers [i](#)

There are no such residues in this entry.

5.8 Polymer linkage issues [i](#)

There are no chain breaks in this entry.

6 Fit of model and data i

6.1 Protein, DNA and RNA chains i

In the following table, the column labelled ‘#RSRZ> 2’ contains the number (and percentage) of RSRZ outliers, followed by percent RSRZ outliers for the chain as percentile scores relative to all X-ray entries and entries of similar resolution. The OWAB column contains the minimum, median, 95th percentile and maximum values of the occupancy-weighted average B-factor per residue. The column labelled ‘Q< 0.9’ lists the number of (and percentage) of residues with an average occupancy less than 0.9.

Mol	Chain	Analysed	<RSRZ>	#RSRZ>2	OWAB(Å ²)	Q<0.9
1	A	250/250 (100%)	-0.66	1 (0%) 92 79	54, 69, 103, 157	0
1	O	250/250 (100%)	-0.57	3 (1%) 79 54	58, 77, 121, 161	0
2	B	244/258 (94%)	-0.56	5 (2%) 65 36	53, 74, 119, 173	0
2	P	244/258 (94%)	-0.52	5 (2%) 65 36	58, 81, 128, 176	0
3	C	240/254 (94%)	-0.48	6 (2%) 57 29	57, 82, 147, 176	0
3	Q	240/254 (94%)	-0.31	10 (4%) 36 14	63, 96, 176, 199	0
4	D	235/260 (90%)	-0.64	0 100 100	60, 81, 113, 154	0
4	R	235/260 (90%)	-0.56	1 (0%) 92 79	59, 84, 127, 173	0
5	E	231/234 (98%)	-0.53	1 (0%) 92 79	62, 85, 122, 170	0
5	S	231/234 (98%)	-0.50	1 (0%) 92 79	64, 89, 131, 165	0
6	F	243/288 (84%)	-0.67	0 100 100	55, 77, 120, 154	0
6	T	243/288 (84%)	-0.62	1 (0%) 92 79	56, 83, 134, 175	0
7	G	241/252 (95%)	-0.69	0 100 100	52, 71, 112, 159	0
7	U	241/252 (95%)	-0.66	1 (0%) 92 79	52, 73, 107, 143	0
8	H	222/232 (95%)	-0.74	0 100 100	52, 68, 104, 127	0
8	V	222/232 (95%)	-0.74	1 (0%) 91 75	52, 71, 105, 135	0
9	I	204/205 (99%)	-0.86	1 (0%) 91 75	47, 65, 94, 120	0
9	W	204/205 (99%)	-0.83	0 100 100	52, 70, 96, 132	0
10	J	195/198 (98%)	-0.74	2 (1%) 82 59	54, 71, 99, 137	0
10	X	195/198 (98%)	-0.75	2 (1%) 82 59	56, 73, 104, 153	0
11	K	212/212 (100%)	-0.73	1 (0%) 91 75	42, 72, 102, 130	0
11	Y	212/212 (100%)	-0.76	0 100 100	55, 70, 102, 128	0
12	L	222/222 (100%)	-0.78	0 100 100	47, 72, 100, 123	0
12	Z	222/222 (100%)	-0.79	0 100 100	50, 68, 97, 114	0

Continued on next page...

Continued from previous page...

Mol	Chain	Analysed	<RSRZ>	#RSRZ>2	OWAB(Å ²)	Q<0.9
13	M	233/246 (94%)	-0.76	0 100 100	51, 69, 95, 105	0
13	a	233/246 (94%)	-0.76	1 (0%) 92 79	50, 68, 91, 107	0
14	N	196/196 (100%)	-0.82	0 100 100	47, 65, 95, 121	0
14	b	196/196 (100%)	-0.81	0 100 100	53, 66, 97, 119	0
All	All	6336/6614 (95%)	-0.67	43 (0%) 87 69	42, 74, 120, 199	0

The worst 5 of 43 RSRZ outliers are listed below:

Mol	Chain	Res	Type	RSRZ
3	Q	49	THR	6.2
3	Q	50	LEU	4.8
3	C	206	LYS	4.5
2	B	220	ASN	3.7
1	O	1	MET	3.6

6.2 Non-standard residues in protein, DNA, RNA chains [i](#)

There are no non-standard protein/DNA/RNA residues in this entry.

6.3 Carbohydrates [i](#)

There are no monosaccharides in this entry.

6.4 Ligands [i](#)

In the following table, the Atoms column lists the number of modelled atoms in the group and the number defined in the chemical component dictionary. The B-factors column lists the minimum, median, 95th percentile and maximum values of B factors of atoms in the group. The column labelled 'Q< 0.9' lists the number of atoms with occupancy less than 0.9.

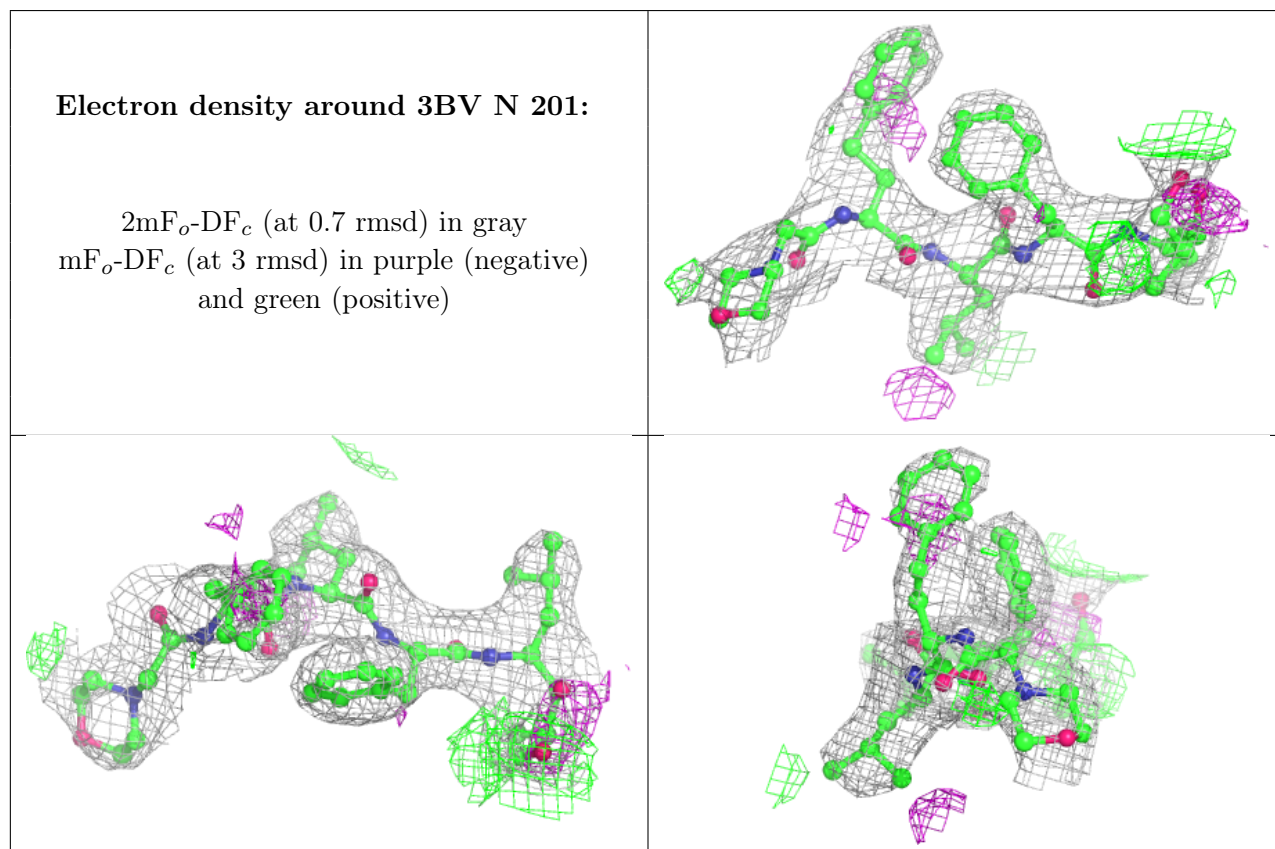
Mol	Type	Chain	Res	Atoms	RSCC	RSR	B-factors(Å ²)	Q<0.9
16	3BV	N	201	52/52	0.87	0.26	53,66,147,147	0
16	3BV	b	201	52/52	0.88	0.25	58,70,147,150	0
16	3BV	H	301	52/52	0.90	0.23	63,71,116,124	0
16	3BV	V	301	52/52	0.91	0.23	63,70,118,123	0
16	3BV	K	301	52/52	0.91	0.22	57,67,119,123	0
17	MES	H	302	12/12	0.93	0.32	81,89,95,116	0
17	MES	V	302	12/12	0.93	0.34	86,90,124,129	0

Continued on next page...

Continued from previous page...

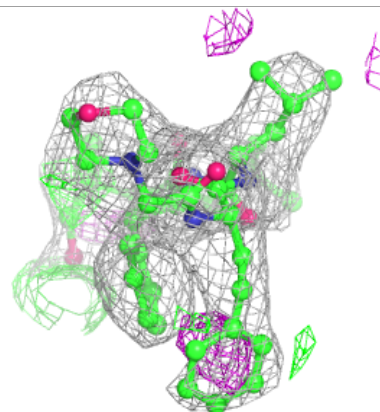
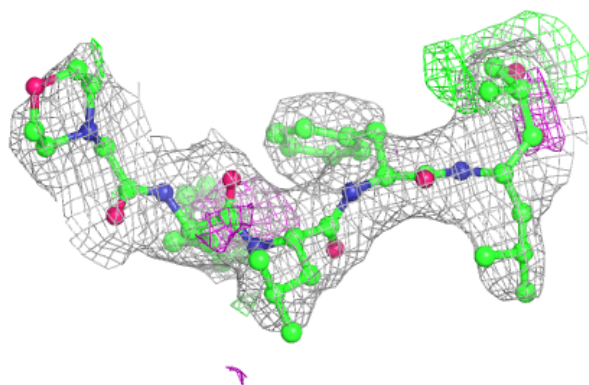
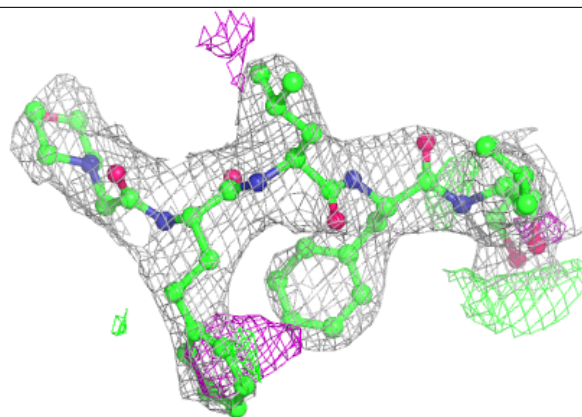
Mol	Type	Chain	Res	Atoms	RSCC	RSR	B-factors(\AA^2)	Q<0.9
16	3BV	Y	301	52/52	0.94	0.19	53,64,119,125	0
15	CL	b	202	1/1	0.94	0.16	59,59,59,59	0
18	MG	N	202	1/1	0.96	0.12	52,52,52,52	0
18	MG	I	301	1/1	0.97	0.14	68,68,68,68	0
17	MES	K	303	12/12	0.97	0.30	55,59,76,80	0
15	CL	U	301	1/1	0.98	0.20	59,59,59,59	0
18	MG	K	302	1/1	0.98	0.04	66,66,66,66	0
17	MES	Y	303	12/12	0.98	0.26	54,58,73,76	0
15	CL	N	203	1/1	0.99	0.08	55,55,55,55	0
15	CL	G	301	1/1	0.99	0.18	63,63,63,63	0
18	MG	Y	302	1/1	0.99	0.04	57,57,57,57	0

The following is a graphical depiction of the model fit to experimental electron density of all instances of the Ligand of Interest. In addition, ligands with molecular weight > 250 and outliers as shown on the geometry validation Tables will also be included. Each fit is shown from different orientation to approximate a three-dimensional view.

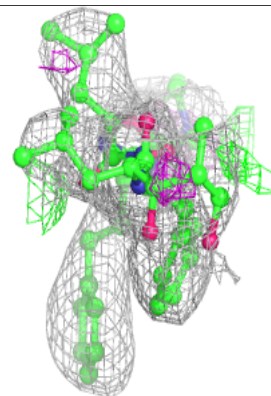
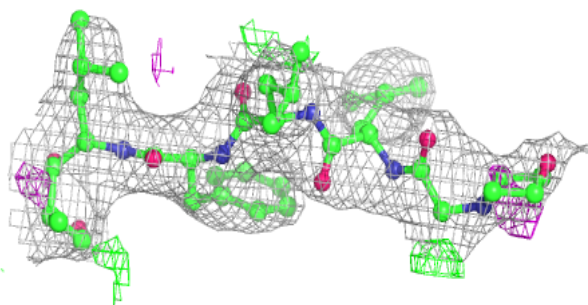
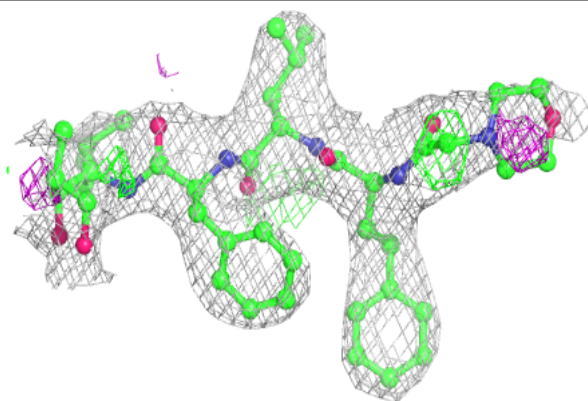


Electron density around 3BV b 201:

$2mF_o-DF_c$ (at 0.7 rmsd) in gray
 mF_o-DF_c (at 3 rmsd) in purple (negative)
and green (positive)

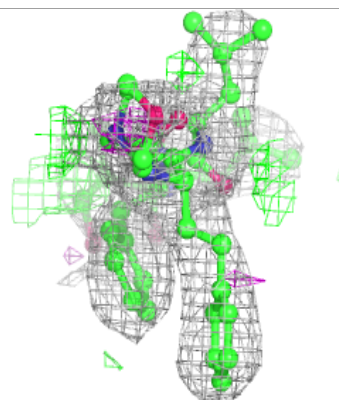
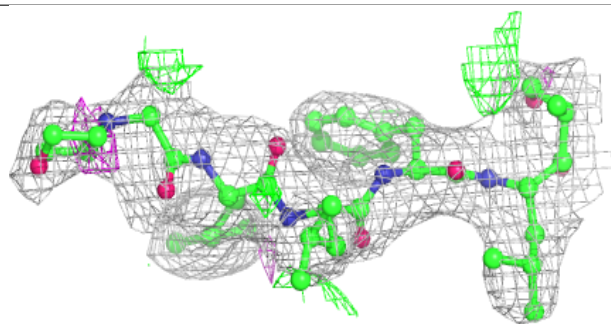
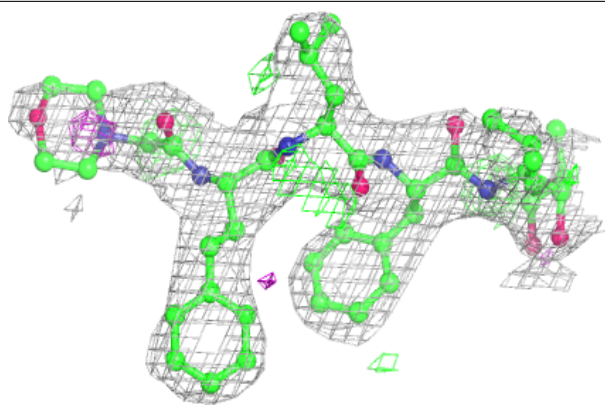
**Electron density around 3BV H 301:**

$2mF_o-DF_c$ (at 0.7 rmsd) in gray
 mF_o-DF_c (at 3 rmsd) in purple (negative)
and green (positive)

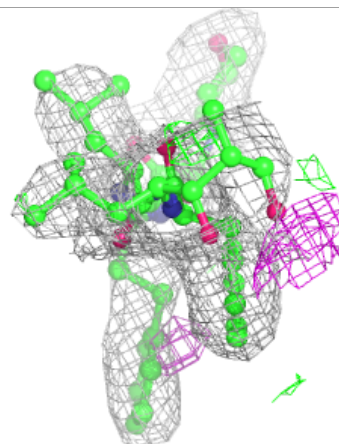
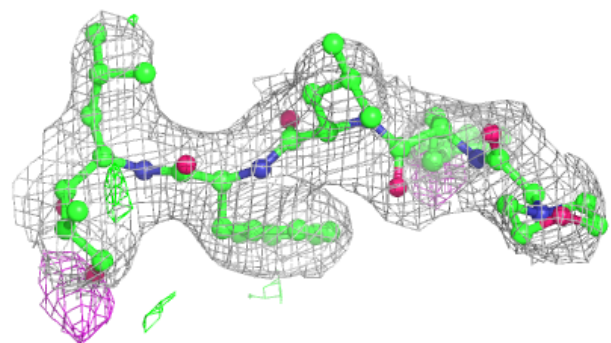
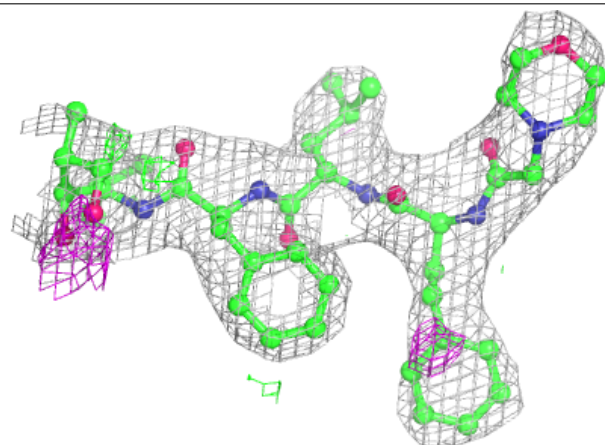


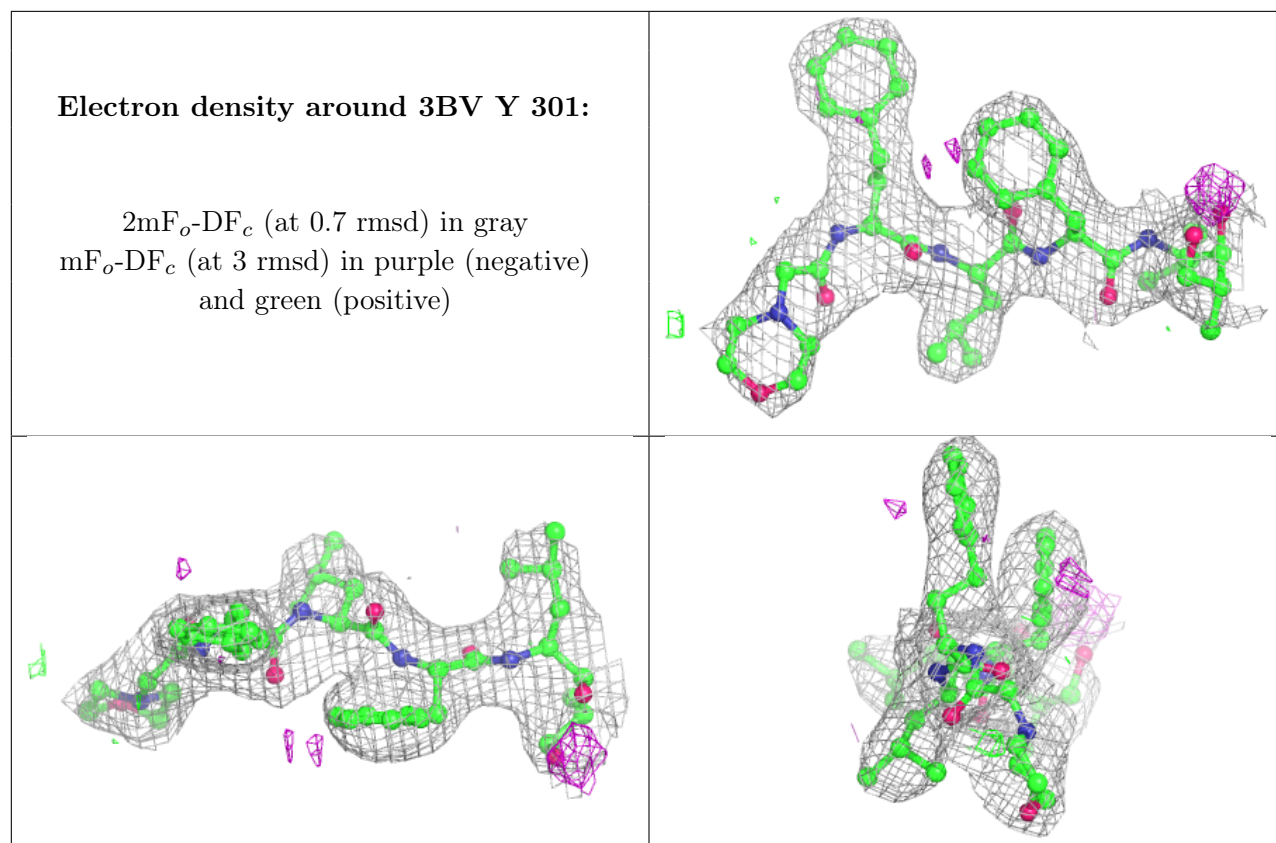
Electron density around 3BV V 301:

$2mF_o-DF_c$ (at 0.7 rmsd) in gray
 mF_o-DF_c (at 3 rmsd) in purple (negative)
and green (positive)

**Electron density around 3BV K 301:**

$2mF_o-DF_c$ (at 0.7 rmsd) in gray
 mF_o-DF_c (at 3 rmsd) in purple (negative)
and green (positive)





6.5 Other polymers [i](#)

There are no such residues in this entry.