



Full wwPDB X-ray Structure Validation Report ⓘ

Aug 8, 2020 – 05:03 AM BST

PDB ID : 3QQB
Title : Crystal structure of HA2 R106H mutant of H2 hemagglutinin, neutral pH form
Authors : Xu, R.; Wilson, I.A.
Deposited on : 2011-02-15
Resolution : 1.97 Å(reported)

This is a Full wwPDB X-ray Structure Validation Report for a publicly released PDB entry.

We welcome your comments at validation@mail.wwpdb.org

A user guide is available at

<https://www.wwpdb.org/validation/2017/XrayValidationReportHelp>

with specific help available everywhere you see the ⓘ symbol.

The following versions of software and data (see [references ⓘ](#)) were used in the production of this report:

MolProbity : 4.02b-467
Mogul : 1.8.5 (274361), CSD as541be (2020)
Xtriage (Phenix) : 1.13
EDS : 2.13.1
Percentile statistics : 20191225.v01 (using entries in the PDB archive December 25th 2019)
Refmac : 5.8.0158
CCP4 : 7.0.044 (Gargrove)
Ideal geometry (proteins) : Engh & Huber (2001)
Ideal geometry (DNA, RNA) : Parkinson et al. (1996)
Validation Pipeline (wwPDB-VP) : 2.13.1

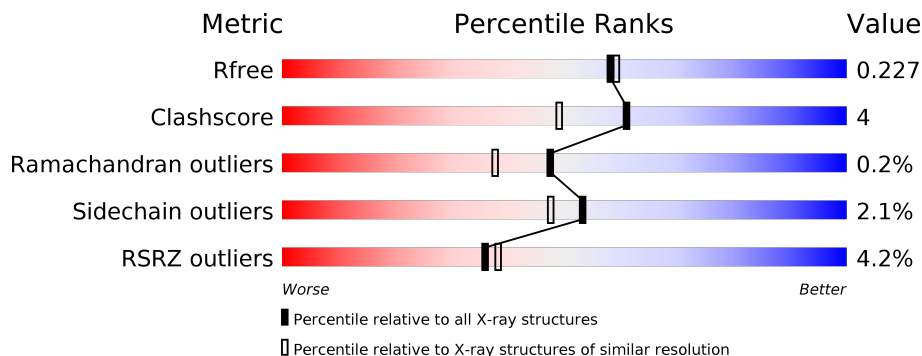
1 Overall quality at a glance

The following experimental techniques were used to determine the structure:

X-RAY DIFFRACTION

The reported resolution of this entry is 1.97 Å.

Percentile scores (ranging between 0-100) for global validation metrics of the entry are shown in the following graphic. The table shows the number of entries on which the scores are based.



Metric	Whole archive (#Entries)	Similar resolution (#Entries, resolution range(Å))
R_{free}	130704	11647 (2.00-1.96)
Clashscore	141614	1014 (1.98-1.98)
Ramachandran outliers	138981	1006 (1.98-1.98)
Sidechain outliers	138945	1006 (1.98-1.98)
RSRZ outliers	127900	11410 (2.00-1.96)

The table below summarises the geometric issues observed across the polymeric chains and their fit to the electron density. The red, orange, yellow and green segments on the lower bar indicate the fraction of residues that contain outliers for ≥ 3 , 2, 1 and 0 types of geometric quality criteria respectively. A grey segment represents the fraction of residues that are not modelled. The numeric value for each fraction is indicated below the corresponding segment, with a dot representing fractions $\leq 5\%$. The upper red bar (where present) indicates the fraction of residues that have poor fit to the electron density. The numeric value is given above the bar.

Mol	Chain	Length	Quality of chain
1	A	327	
2	B	174	
3	C	2	

2 Entry composition i

There are 7 unique types of molecules in this entry. The entry contains 4536 atoms, of which 0 are hydrogens and 0 are deuteriums.

In the tables below, the ZeroOcc column contains the number of atoms modelled with zero occupancy, the AltConf column contains the number of residues with at least one atom in alternate conformation and the Trace column contains the number of residues modelled with at most 2 atoms.

- Molecule 1 is a protein called Hemagglutinin.

Mol	Chain	Residues	Atoms					ZeroOcc	AltConf	Trace
			Total	C	N	O	S			
1	A	324	2534	1593	440	486	15	0	1	0

There is a discrepancy between the modelled and reference sequences:

Chain	Residue	Modelled	Actual	Comment	Reference
A	9	PRO	-	expression tag	UNP C7S226

- Molecule 2 is a protein called Hemagglutinin.

Mol	Chain	Residues	Atoms					ZeroOcc	AltConf	Trace
			Total	C	N	O	S			
2	B	172	1395	871	236	279	9	0	0	0

There is a discrepancy between the modelled and reference sequences:

Chain	Residue	Modelled	Actual	Comment	Reference
B	106	HIS	ARG	engineered mutation	UNP C7S226

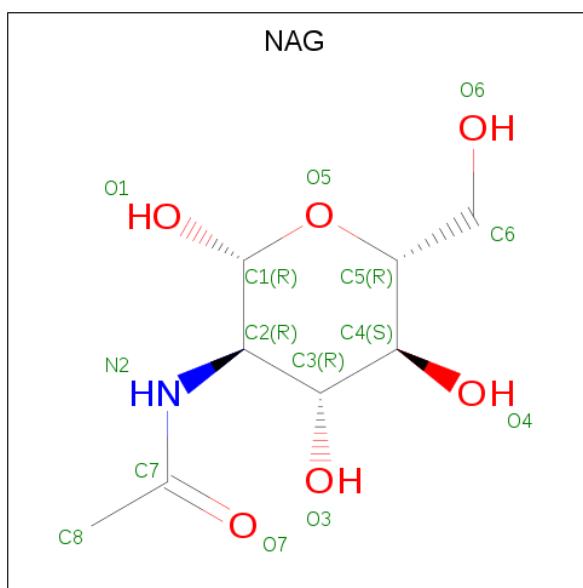
- Molecule 3 is an oligosaccharide called 2-acetamido-2-deoxy-beta-D-glucopyranose-(1-4)-2-acetamido-2-deoxy-beta-D-glucopyranose.



Mol	Chain	Residues	Atoms				ZeroOcc	AltConf	Trace
			Total	C	N	O			
3	C	2	28	16	2	10	0	0	0

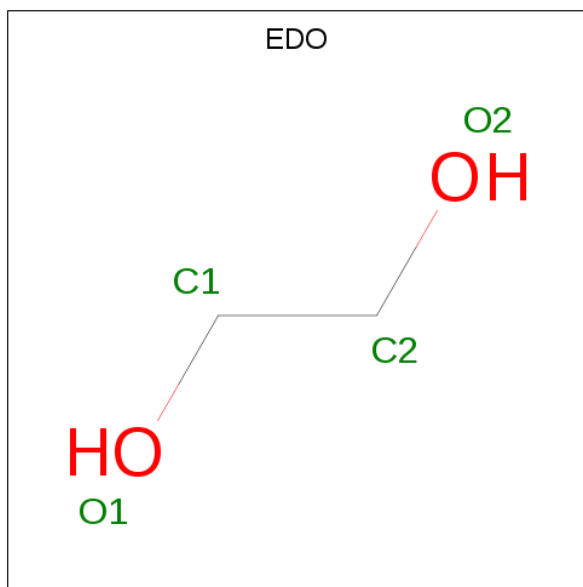
- Molecule 4 is 2-acetamido-2-deoxy-beta-D-glucopyranose (three-letter code: NAG) (formula:

C₈H₁₅NO₆).



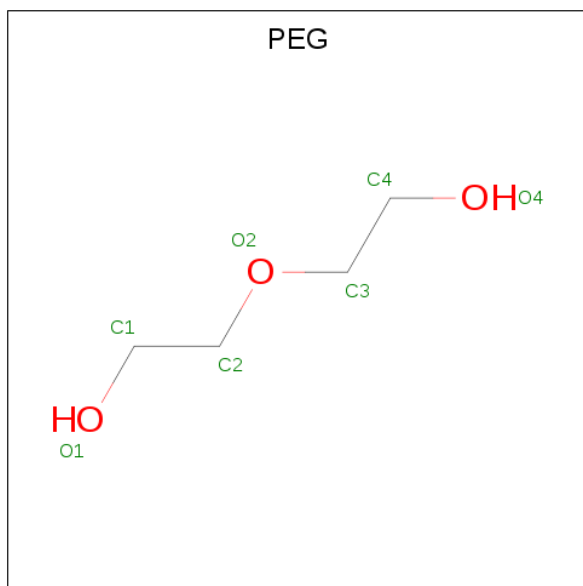
Mol	Chain	Residues	Atoms				ZeroOcc	AltConf
4	A	1	Total	C	N	O	0	0
			14	8	1	5		
4	B	1	Total	C	N	O	0	0
			14	8	1	5		

- Molecule 5 is 1,2-ETHANEDIOL (three-letter code: EDO) (formula: C₂H₆O₂).



Mol	Chain	Residues	Atoms			ZeroOcc	AltConf
5	A	1	Total	C	O	0	0
			4	2	2		

- Molecule 6 is DI(HYDROXYETHYL)ETHER (three-letter code: PEG) (formula: C₄H₁₀O₃).



Mol	Chain	Residues	Atoms		ZeroOcc	AltConf
6	B	1	Total	C O	0	0
			7	4 3		

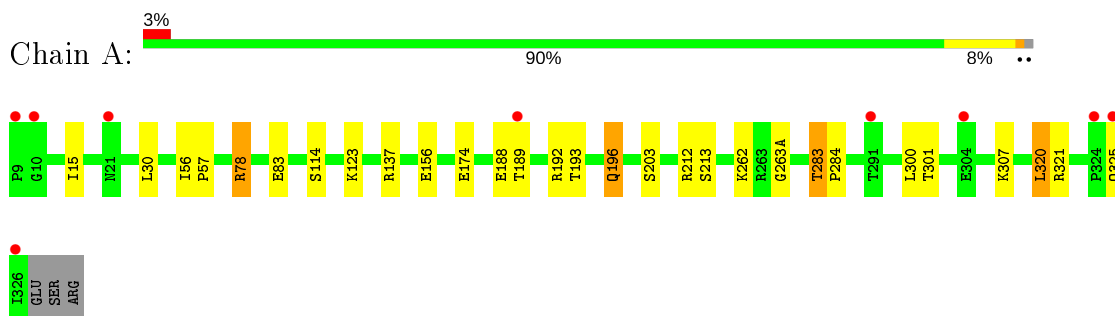
- Molecule 7 is water.

Mol	Chain	Residues	Atoms		ZeroOcc	AltConf
7	A	383	Total	O	0	0
			383	383		
7	B	157	Total	O	0	0
			157	157		

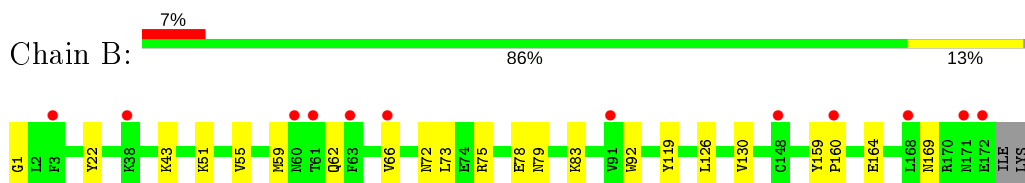
3 Residue-property plots [i](#)

These plots are drawn for all protein, RNA, DNA and oligosaccharide chains in the entry. The first graphic for a chain summarises the proportions of the various outlier classes displayed in the second graphic. The second graphic shows the sequence view annotated by issues in geometry and electron density. Residues are color-coded according to the number of geometric quality criteria for which they contain at least one outlier: green = 0, yellow = 1, orange = 2 and red = 3 or more. A red dot above a residue indicates a poor fit to the electron density ($RSRZ > 2$). Stretches of 2 or more consecutive residues without any outlier are shown as a green connector. Residues present in the sample, but not in the model, are shown in grey.

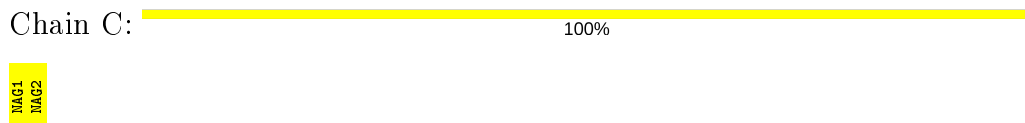
- Molecule 1: Hemagglutinin



- Molecule 2: Hemagglutinin



- Molecule 3: 2-acetamido-2-deoxy-beta-D-glucopyranose-(1-4)-2-acetamido-2-deoxy-beta-D-glucopyranose



4 Data and refinement statistics

Property	Value	Source
Space group	P 63	Depositor
Cell constants a, b, c, α , β , γ	70.29Å 70.29Å 237.14Å 90.00° 90.00° 120.00°	Depositor
Resolution (Å)	35.00 – 1.97 30.19 – 1.97	Depositor EDS
% Data completeness (in resolution range)	99.7 (35.00-1.97) 99.7 (30.19-1.97)	Depositor EDS
R_{merge}	0.07	Depositor
R_{sym}	(Not available)	Depositor
$\langle I/\sigma(I) \rangle$ ¹	2.21 (at 1.96Å)	Xtrriage
Refinement program	REFMAC 5.2.0019	Depositor
R, R_{free}	0.185 , 0.227 0.185 , 0.227	Depositor DCC
R_{free} test set	2346 reflections (5.06%)	wwPDB-VP
Wilson B-factor (Å ²)	30.5	Xtrriage
Anisotropy	0.230	Xtrriage
Bulk solvent k_{sol} (e/Å ³), B_{sol} (Å ²)	0.34 , 51.8	EDS
L-test for twinning ²	$\langle L \rangle = 0.50$, $\langle L^2 \rangle = 0.34$	Xtrriage
Estimated twinning fraction	0.059 for h,-h-k,-l	Xtrriage
F_o, F_c correlation	0.96	EDS
Total number of atoms	4536	wwPDB-VP
Average B, all atoms (Å ²)	37.0	wwPDB-VP

Xtrriage's analysis on translational NCS is as follows: *The largest off-origin peak in the Patterson function is 3.54% of the height of the origin peak. No significant pseudotranslation is detected.*

¹ Intensities estimated from amplitudes.

² Theoretical values of $\langle |L| \rangle$, $\langle L^2 \rangle$ for acentric reflections are 0.5, 0.333 respectively for untwinned datasets, and 0.375, 0.2 for perfectly twinned datasets.

5 Model quality [i](#)

5.1 Standard geometry [i](#)

Bond lengths and bond angles in the following residue types are not validated in this section: PEG, NAG, EDO

The Z score for a bond length (or angle) is the number of standard deviations the observed value is removed from the expected value. A bond length (or angle) with $|Z| > 5$ is considered an outlier worth inspection. RMSZ is the root-mean-square of all Z scores of the bond lengths (or angles).

Mol	Chain	Bond lengths		Bond angles	
		RMSZ	# Z >5	RMSZ	# Z >5
1	A	0.71	0/2594	0.71	0/3521
2	B	0.57	0/1424	0.65	0/1913
All	All	0.67	0/4018	0.69	0/5434

There are no bond length outliers.

There are no bond angle outliers.

There are no chirality outliers.

There are no planarity outliers.

5.2 Too-close contacts [i](#)

In the following table, the Non-H and H(model) columns list the number of non-hydrogen atoms and hydrogen atoms in the chain respectively. The H(added) column lists the number of hydrogen atoms added and optimized by MolProbity. The Clashes column lists the number of clashes within the asymmetric unit, whereas Symm-Clashes lists symmetry related clashes.

Mol	Chain	Non-H	H(model)	H(added)	Clashes	Symm-Clashes
1	A	2534	0	2486	21	0
2	B	1395	0	1292	18	0
3	C	28	0	25	0	0
4	A	14	0	13	0	0
4	B	14	0	13	0	0
5	A	4	0	6	0	0
6	B	7	0	10	0	0
7	A	383	0	0	2	1
7	B	157	0	0	6	0
All	All	4536	0	3845	35	1

The all-atom clashscore is defined as the number of clashes found per 1000 atoms (including

hydrogen atoms). The all-atom clashscore for this structure is 4.

All (35) close contacts within the same asymmetric unit are listed below, sorted by their clash magnitude.

Atom-1	Atom-2	Interatomic distance (Å)	Clash overlap (Å)
1:A:78:ARG:HH11	1:A:78:ARG:HG2	1.48	0.76
2:B:75:ARG:NH1	2:B:78:GLU:OE1	2.20	0.75
2:B:66:VAL:HA	7:B:538:HOH:O	1.90	0.71
1:A:78:ARG:NH1	1:A:78:ARG:HG2	2.13	0.63
1:A:307[A]:LYS:HD2	2:B:62:GLN:HG2	1.81	0.63
2:B:73:LEU:HG	7:B:197:HOH:O	1.98	0.62
1:A:189:THR:O	1:A:193:THR:HG23	2.01	0.61
2:B:72:ASN:OD1	2:B:73:LEU:HD12	2.01	0.60
2:B:79:ASN:O	2:B:83:LYS:HG2	2.02	0.58
2:B:126:LEU:HD13	2:B:130:VAL:HG11	1.86	0.58
1:A:212:ARG:CG	1:A:213:SER:N	2.66	0.58
1:A:212:ARG:HG3	1:A:213:SER:N	2.19	0.57
1:A:284:PRO:HD3	1:A:300:LEU:O	2.07	0.55
2:B:62:GLN:HB2	2:B:92:TRP:CD2	2.43	0.54
1:A:325:GLN:OE1	1:A:325:GLN:N	2.42	0.52
2:B:51:LYS:O	2:B:55:VAL:HG13	2.12	0.50
1:A:192:ARG:HG3	7:A:369:HOH:O	2.11	0.49
2:B:1:GLY:HA3	7:B:276:HOH:O	2.12	0.49
1:A:156:GLU:HG3	1:A:196:GLN:HG2	1.96	0.47
2:B:169:ASN:HB3	7:B:342:HOH:O	2.15	0.45
1:A:156:GLU:HG3	1:A:196:GLN:CG	2.48	0.44
1:A:83:GLU:OE2	1:A:262:LYS:HE3	2.17	0.44
1:A:114:SER:HA	1:A:263(A):GLY:O	2.19	0.43
2:B:159:TYR:HB3	2:B:160:PRO:HD3	2.00	0.43
1:A:15:ILE:HG13	2:B:119:TYR:HA	2.01	0.42
1:A:307[A]:LYS:CD	2:B:62:GLN:HG2	2.49	0.42
2:B:164:GLU:HG2	7:B:257:HOH:O	2.20	0.42
1:A:188:GLU:CD	1:A:188:GLU:H	2.22	0.42
1:A:307[A]:LYS:HB3	2:B:62:GLN:CD	2.40	0.42
1:A:320:LEU:HD23	1:A:320:LEU:H	1.85	0.42
1:A:123:LYS:HD3	7:A:605:HOH:O	2.20	0.42
2:B:43:LYS:HE2	7:B:550:HOH:O	2.19	0.41
1:A:283:THR:HG22	1:A:301:THR:HG22	2.02	0.41
1:A:56:ILE:HA	1:A:57:PRO:HD3	1.90	0.41
2:B:55:VAL:O	2:B:59:MET:HE2	2.20	0.40

All (1) symmetry-related close contacts are listed below. The label for Atom-2 includes the symmetry operator and encoded unit-cell translations to be applied.

Atom-1	Atom-2	Interatomic distance (Å)	Clash overlap (Å)
7:A:440:HOH:O	7:A:591:HOH:O[3_655]	2.15	0.05

5.3 Torsion angles [i](#)

5.3.1 Protein backbone [i](#)

In the following table, the Percentiles column shows the percent Ramachandran outliers of the chain as a percentile score with respect to all X-ray entries followed by that with respect to entries of similar resolution.

The Analysed column shows the number of residues for which the backbone conformation was analysed, and the total number of residues.

Mol	Chain	Analysed	Favoured	Allowed	Outliers	Percentiles	
1	A	322/327 (98%)	313 (97%)	8 (2%)	1 (0%)	41	29
2	B	170/174 (98%)	167 (98%)	3 (2%)	0	100	100
All	All	492/501 (98%)	480 (98%)	11 (2%)	1 (0%)	47	38

All (1) Ramachandran outliers are listed below:

Mol	Chain	Res	Type
1	A	196	GLN

5.3.2 Protein sidechains [i](#)

In the following table, the Percentiles column shows the percent sidechain outliers of the chain as a percentile score with respect to all X-ray entries followed by that with respect to entries of similar resolution.

The Analysed column shows the number of residues for which the sidechain conformation was analysed, and the total number of residues.

Mol	Chain	Analysed	Rotameric	Outliers	Percentiles	
1	A	285/288 (99%)	277 (97%)	8 (3%)	43	32
2	B	149/151 (99%)	148 (99%)	1 (1%)	84	83
All	All	434/439 (99%)	425 (98%)	9 (2%)	53	47

All (9) residues with a non-rotameric sidechain are listed below:

Mol	Chain	Res	Type
1	A	30	LEU
1	A	78	ARG
1	A	137	ARG
1	A	174	GLU
1	A	203	SER
1	A	283	THR
1	A	320	LEU
1	A	321	ARG
2	B	22	TYR

Some sidechains can be flipped to improve hydrogen bonding and reduce clashes. There are no such sidechains identified.

5.3.3 RNA [i](#)

There are no RNA molecules in this entry.

5.4 Non-standard residues in protein, DNA, RNA chains [i](#)

There are no non-standard protein/DNA/RNA residues in this entry.

5.5 Carbohydrates [i](#)

2 monosaccharides are modelled in this entry.

In the following table, the Counts columns list the number of bonds (or angles) for which Mogul statistics could be retrieved, the number of bonds (or angles) that are observed in the model and the number of bonds (or angles) that are defined in the Chemical Component Dictionary. The Link column lists molecule types, if any, to which the group is linked. The Z score for a bond length (or angle) is the number of standard deviations the observed value is removed from the expected value. A bond length (or angle) with $|Z| > 2$ is considered an outlier worth inspection. RMSZ is the root-mean-square of all Z scores of the bond lengths (or angles).

Mol	Type	Chain	Res	Link	Bond lengths			Bond angles		
					Counts	RMSZ	# $ Z > 2$	Counts	RMSZ	# $ Z > 2$
3	NAG	C	1	1,3	14,14,15	0.58	0	17,19,21	2.07	5 (29%)
3	NAG	C	2	3	14,14,15	0.81	1 (7%)	17,19,21	1.78	3 (17%)

In the following table, the Chirals column lists the number of chiral outliers, the number of chiral centers analysed, the number of these observed in the model and the number defined in the Chemical Component Dictionary. Similar counts are reported in the Torsion and Rings columns. '-' means no outliers of that kind were identified.

Mol	Type	Chain	Res	Link	Chirals	Torsions	Rings
3	NAG	C	1	1,3	-	0/6/23/26	0/1/1/1
3	NAG	C	2	3	-	4/6/23/26	0/1/1/1

All (1) bond length outliers are listed below:

Mol	Chain	Res	Type	Atoms	Z	Observed(Å)	Ideal(Å)
3	C	2	NAG	C1-C2	2.19	1.55	1.52

All (8) bond angle outliers are listed below:

Mol	Chain	Res	Type	Atoms	Z	Observed(°)	Ideal(°)
3	C	1	NAG	C1-O5-C5	4.07	117.71	112.19
3	C	1	NAG	O4-C4-C5	3.94	119.09	109.30
3	C	1	NAG	C4-C3-C2	-3.81	105.44	111.02
3	C	2	NAG	C4-C3-C2	3.67	116.39	111.02
3	C	2	NAG	C2-N2-C7	3.57	127.98	122.90
3	C	2	NAG	O5-C1-C2	3.33	116.54	111.29
3	C	1	NAG	O4-C4-C3	2.34	115.76	110.35
3	C	1	NAG	O7-C7-C8	-2.12	118.12	122.06

There are no chirality outliers.

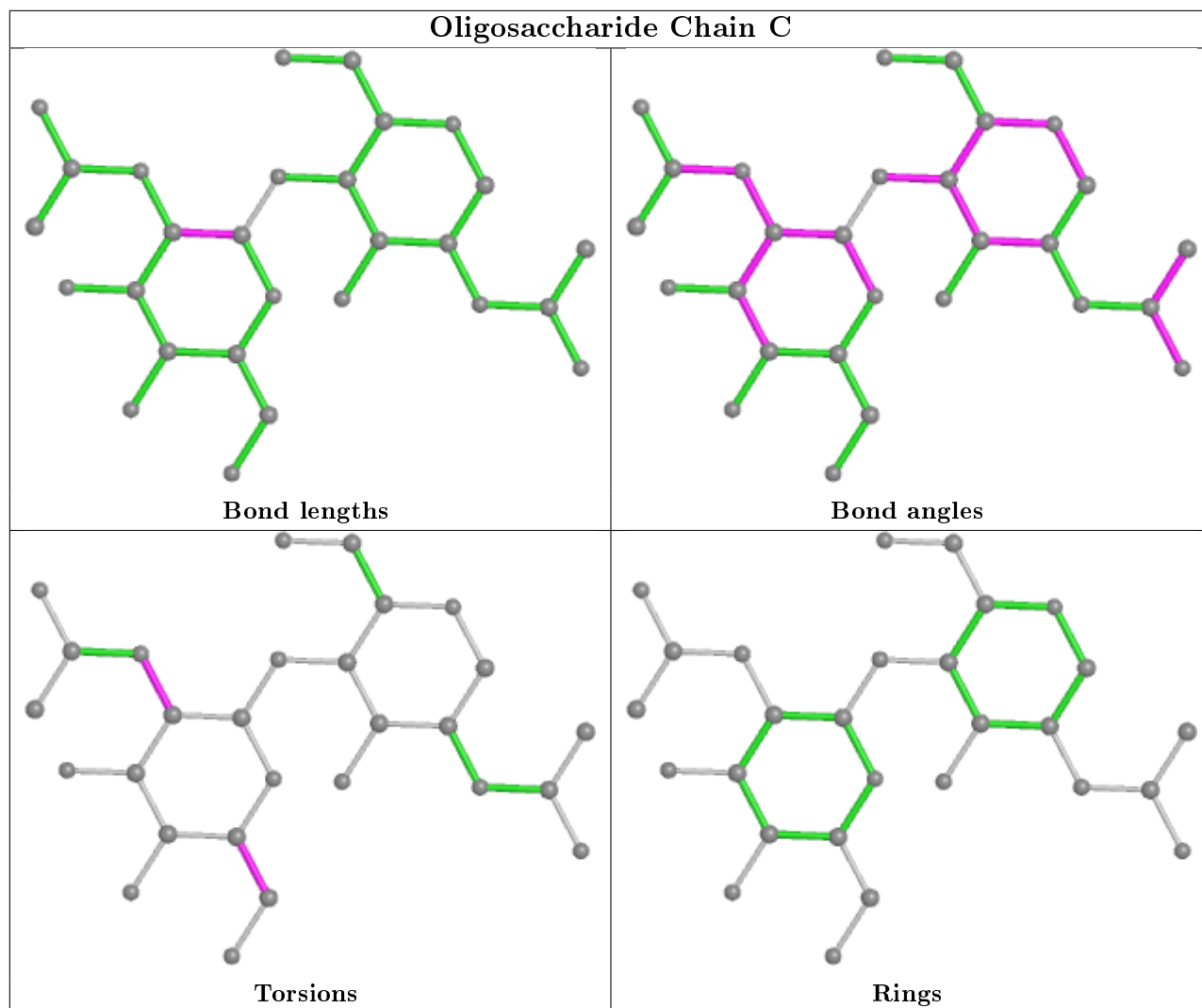
All (4) torsion outliers are listed below:

Mol	Chain	Res	Type	Atoms
3	C	2	NAG	C3-C2-N2-C7
3	C	2	NAG	O5-C5-C6-O6
3	C	2	NAG	C4-C5-C6-O6
3	C	2	NAG	C1-C2-N2-C7

There are no ring outliers.

No monomer is involved in short contacts.

The following is a two-dimensional graphical depiction of Mogul quality analysis of bond lengths, bond angles, torsion angles, and ring geometry for oligosaccharide.



5.6 Ligand geometry [i](#)

4 ligands are modelled in this entry.

In the following table, the Counts columns list the number of bonds (or angles) for which Mogul statistics could be retrieved, the number of bonds (or angles) that are observed in the model and the number of bonds (or angles) that are defined in the Chemical Component Dictionary. The Link column lists molecule types, if any, to which the group is linked. The Z score for a bond length (or angle) is the number of standard deviations the observed value is removed from the expected value. A bond length (or angle) with $|Z| > 2$ is considered an outlier worth inspection. RMSZ is the root-mean-square of all Z scores of the bond lengths (or angles).

Mol	Type	Chain	Res	Link	Bond lengths			Bond angles		
					Counts	RMSZ	# $ Z > 2$	Counts	RMSZ	# $ Z > 2$
5	EDO	A	1	-	3,3,3	0.43	0	2,2,2	0.13	0
4	NAG	A	332	1	14,14,15	0.56	0	17,19,21	1.47	2 (11%)
4	NAG	B	175	2	14,14,15	0.76	1 (7%)	17,19,21	1.16	1 (5%)

Mol	Type	Chain	Res	Link	Bond lengths			Bond angles		
					Counts	RMSZ	# Z > 2	Counts	RMSZ	# Z > 2
6	PEG	B	176	-	6,6,6	0.41	0	5,5,5	0.15	0

In the following table, the Chirals column lists the number of chiral outliers, the number of chiral centers analysed, the number of these observed in the model and the number defined in the Chemical Component Dictionary. Similar counts are reported in the Torsion and Rings columns. '-' means no outliers of that kind were identified.

Mol	Type	Chain	Res	Link	Chirals	Torsions	Rings
5	EDO	A	1	-	-	0/1/1/1	-
4	NAG	A	332	1	-	2/6/23/26	0/1/1/1
4	NAG	B	175	2	-	0/6/23/26	0/1/1/1
6	PEG	B	176	-	-	2/4/4/4	-

All (1) bond length outliers are listed below:

Mol	Chain	Res	Type	Atoms	Z	Observed(Å)	Ideal(Å)
4	B	175	NAG	C1-C2	2.32	1.55	1.52

All (3) bond angle outliers are listed below:

Mol	Chain	Res	Type	Atoms	Z	Observed(°)	Ideal(°)
4	A	332	NAG	C4-C3-C2	3.70	116.44	111.02
4	B	175	NAG	C1-O5-C5	3.00	116.26	112.19
4	A	332	NAG	O5-C5-C6	2.59	111.26	107.20

There are no chirality outliers.

All (4) torsion outliers are listed below:

Mol	Chain	Res	Type	Atoms
4	A	332	NAG	O5-C5-C6-O6
4	A	332	NAG	C4-C5-C6-O6
6	B	176	PEG	O1-C1-C2-O2
6	B	176	PEG	O2-C3-C4-O4

There are no ring outliers.

No monomer is involved in short contacts.

5.7 Other polymers [i](#)

There are no such residues in this entry.

5.8 Polymer linkage issues

There are no chain breaks in this entry.

6 Fit of model and data

6.1 Protein, DNA and RNA chains

In the following table, the column labelled ‘#RSRZ> 2’ contains the number (and percentage) of RSRZ outliers, followed by percent RSRZ outliers for the chain as percentile scores relative to all X-ray entries and entries of similar resolution. The OWAB column contains the minimum, median, 95th percentile and maximum values of the occupancy-weighted average B-factor per residue. The column labelled ‘Q< 0.9’ lists the number of (and percentage) of residues with an average occupancy less than 0.9.

Mol	Chain	Analysed	<RSRZ>	#RSRZ>2	OWAB(Å ²)	Q<0.9
1	A	324/327 (99%)	-0.02	9 (2%) 53 55	18, 31, 47, 67	0
2	B	172/174 (98%)	0.42	12 (6%) 16 18	19, 42, 64, 74	0
All	All	496/501 (99%)	0.13	21 (4%) 36 38	18, 35, 57, 74	0

All (21) RSRZ outliers are listed below:

Mol	Chain	Res	Type	RSRZ
1	A	326	ILE	6.8
1	A	325	GLN	5.2
1	A	9	PRO	5.1
1	A	291	THR	4.6
2	B	60	ASN	3.8
2	B	66	VAL	3.8
1	A	324	PRO	3.6
2	B	61	THR	3.4
2	B	63	PHE	3.4
1	A	10	GLY	3.2
2	B	172	GLU	2.9
2	B	148	CYS	2.8
2	B	171	ASN	2.5
2	B	168	LEU	2.5
1	A	21	ASN	2.4
1	A	304	GLU	2.4
2	B	91	VAL	2.3
1	A	189	THR	2.3
2	B	3	PHE	2.2
2	B	160	PRO	2.2
2	B	38	LYS	2.1

6.2 Non-standard residues in protein, DNA, RNA chains [i](#)

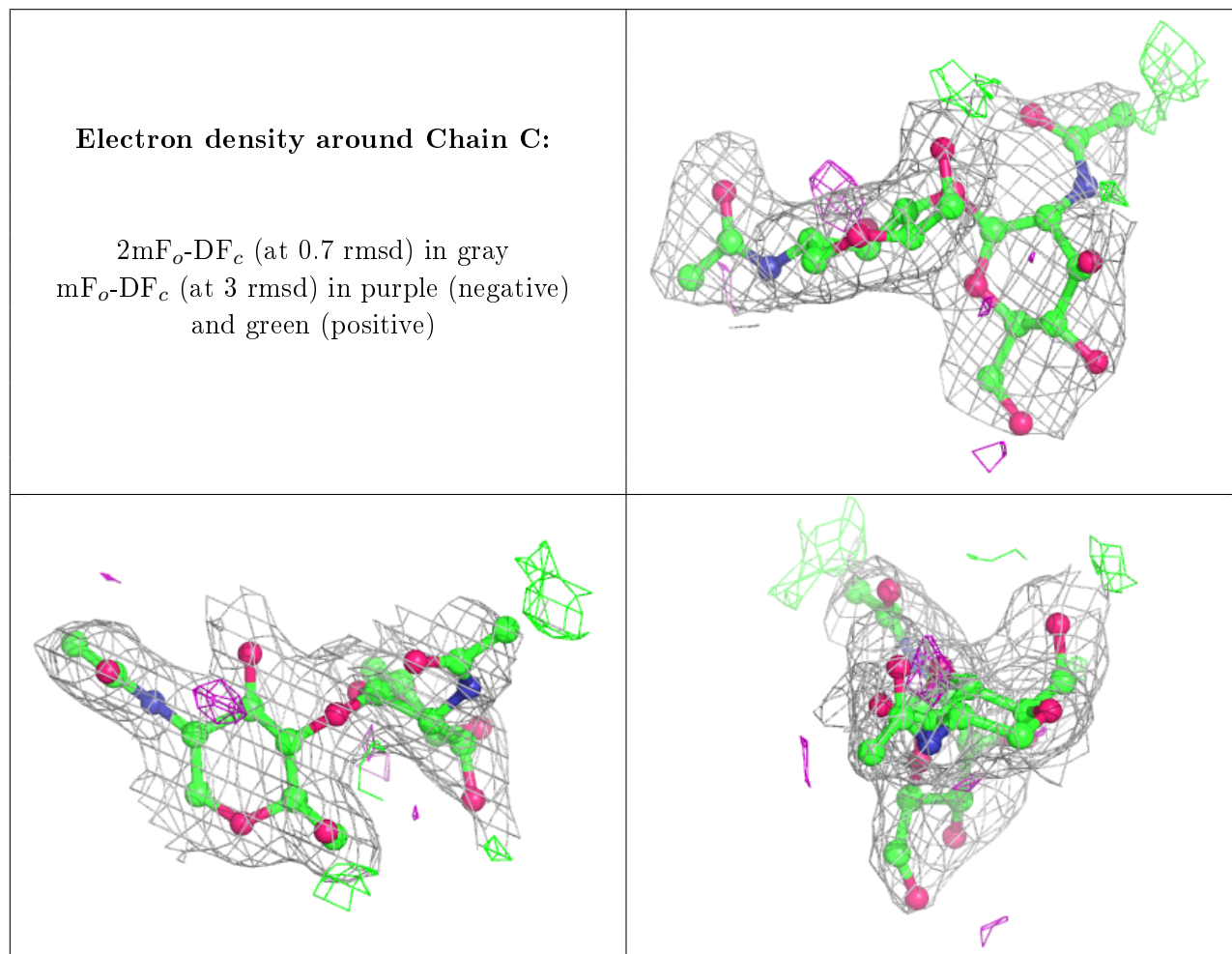
There are no non-standard protein/DNA/RNA residues in this entry.

6.3 Carbohydrates [i](#)

In the following table, the Atoms column lists the number of modelled atoms in the group and the number defined in the chemical component dictionary. The B-factors column lists the minimum, median, 95th percentile and maximum values of B factors of atoms in the group. The column labelled 'Q< 0.9' lists the number of atoms with occupancy less than 0.9.

Mol	Type	Chain	Res	Atoms	RSCC	RSR	B-factors(Å ²)	Q<0.9
3	NAG	C	2	14/15	0.86	0.32	64,67,70,71	0
3	NAG	C	1	14/15	0.88	0.13	38,45,50,59	0

The following is a graphical depiction of the model fit to experimental electron density for oligosaccharide. Each fit is shown from different orientation to approximate a three-dimensional view.



6.4 Ligands [i](#)

In the following table, the Atoms column lists the number of modelled atoms in the group and the number defined in the chemical component dictionary. The B-factors column lists the minimum, median, 95th percentile and maximum values of B factors of atoms in the group. The column labelled 'Q< 0.9' lists the number of atoms with occupancy less than 0.9.

Mol	Type	Chain	Res	Atoms	RSCC	RSR	B-factors(Å ²)	Q<0.9
4	NAG	B	175	14/15	0.68	0.37	62,67,68,68	0
4	NAG	A	332	14/15	0.73	0.32	56,63,65,65	0
6	PEG	B	176	7/7	0.93	0.17	47,48,52,54	0
5	EDO	A	1	4/4	0.97	0.11	31,34,34,34	0

6.5 Other polymers [i](#)

There are no such residues in this entry.