



## Full wwPDB EM Validation Report ⓘ

Apr 23, 2022 – 07:11 am BST

PDB ID : 7QKO  
EMDB ID : EMD-14048  
Title : Torpedo muscle-type nicotinic acetylcholine receptor - Resting conformation  
Authors : Zarkadas, E.; Pebay-Peyroula, E.; Baenziger, J.; Nury, H.  
Deposited on : 2021-12-18  
Resolution : 2.90 Å(reported)

This is a Full wwPDB EM Validation Report for a publicly released PDB entry.

We welcome your comments at [validation@mail.wwpdb.org](mailto:validation@mail.wwpdb.org)

A user guide is available at

<https://www.wwpdb.org/validation/2017/EMValidationReportHelp>

with specific help available everywhere you see the ⓘ symbol.

---

The following versions of software and data (see [references ⓘ](#)) were used in the production of this report:

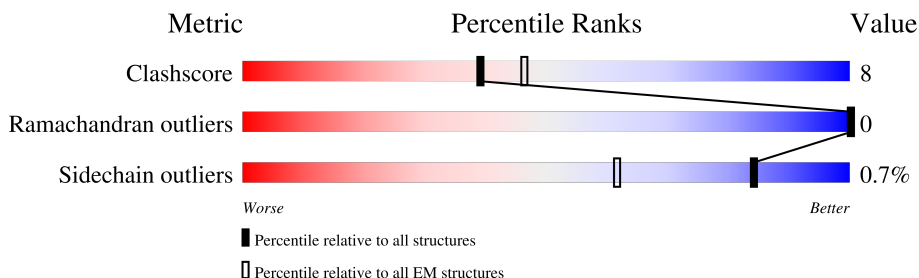
EMDB validation analysis : 0.0.1.dev7  
Mogul : 1.8.4, CSD as541be (2020)  
MolProbity : 4.02b-467  
buster-report : 1.1.7 (2018)  
Percentile statistics : 20191225.v01 (using entries in the PDB archive December 25th 2019)  
Ideal geometry (proteins) : Engh & Huber (2001)  
Ideal geometry (DNA, RNA) : Parkinson et al. (1996)  
Validation Pipeline (wwPDB-VP) : 2.28

# 1 Overall quality at a glance i

The following experimental techniques were used to determine the structure:  
*ELECTRON MICROSCOPY*

The reported resolution of this entry is 2.90 Å.

Percentile scores (ranging between 0-100) for global validation metrics of the entry are shown in the following graphic. The table shows the number of entries on which the scores are based.



Metric	Whole archive (#Entries)	EM structures (#Entries)
Clashscore	158937	4297
Ramachandran outliers	154571	4023
Sidechain outliers	154315	3826

The table below summarises the geometric issues observed across the polymeric chains and their fit to the map. The red, orange, yellow and green segments of the bar indicate the fraction of residues that contain outliers for  $\geq 3$ , 2, 1 and 0 types of geometric quality criteria respectively. A grey segment represents the fraction of residues that are not modelled. The numeric value for each fraction is indicated below the corresponding segment, with a dot representing fractions  $\leq 5\%$ . The upper red bar (where present) indicates the fraction of residues that have poor fit to the EM map (all-atom inclusion  $< 40\%$ ). The numeric value is given above the bar.

Mol	Chain	Length	Quality of chain
1	A	437	
1	D	437	
2	B	469	
3	C	501	
4	E	489	
5	F	7	
5	K	7	
5	L	7	

Continued on next page...

*Continued from previous page...*

Mol	Chain	Length	Quality of chain
6	G	5	<p>60% 60% 40%</p>
6	H	5	<p>40% 40% 60%</p>
7	I	6	<p>17% 100% 83%</p>
8	J	3	<p>33% 100%</p>

## 2 Entry composition i

There are 9 unique types of molecules in this entry. The entry contains 17042 atoms, of which 0 are hydrogens and 0 are deuteriums.

In the tables below, the AltConf column contains the number of residues with at least one atom in alternate conformation and the Trace column contains the number of residues modelled with at most 2 atoms.

- Molecule 1 is a protein called Acetylcholine receptor subunit alpha.

Mol	Chain	Residues	Atoms					AltConf	Trace
			Total	C	N	O	S		
1	A	396	Total	C	N	O	S	0	0
			3210	2102	514	572	22		
1	D	380	Total	C	N	O	S	0	0
			3089	2026	492	550	21		

- Molecule 2 is a protein called Acetylcholine receptor subunit beta.

Mol	Chain	Residues	Atoms					AltConf	Trace
			Total	C	N	O	S		
2	B	396	Total	C	N	O	S	0	0
			3218	2109	512	583	14		

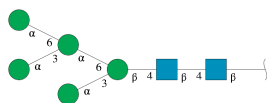
- Molecule 3 is a protein called Acetylcholine receptor subunit delta.

Mol	Chain	Residues	Atoms					AltConf	Trace
			Total	C	N	O	S		
3	C	420	Total	C	N	O	S	0	0
			3408	2223	553	616	16		

- Molecule 4 is a protein called Acetylcholine receptor subunit gamma.

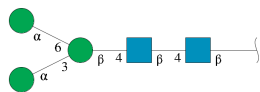
Mol	Chain	Residues	Atoms					AltConf	Trace
			Total	C	N	O	S		
4	E	404	Total	C	N	O	S	0	0
			3278	2149	522	595	12		

- Molecule 5 is an oligosaccharide called alpha-D-mannopyranose-(1-3)-[alpha-D-mannopyranose-(1-6)]alpha-D-mannopyranose-(1-6)-[alpha-D-mannopyranose-(1-3)]beta-D-mannopyranose-(1-4)-2-acetamido-2-deoxy-beta-D-glucopyranose-(1-4)-2-acetamido-2-deoxy-beta-D-glucopyranose.



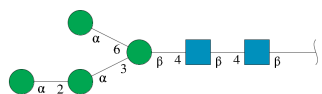
Mol	Chain	Residues	Atoms				AltConf	Trace
5	F	7	Total	C	N	O	0	0
			83	46	2	35		
5	K	7	Total	C	N	O	0	0
			83	46	2	35		
5	L	7	Total	C	N	O	0	0
			83	46	2	35		

- Molecule 6 is an oligosaccharide called alpha-D-mannopyranose-(1-3)-[alpha-D-mannopyranose-(1-6)]beta-D-mannopyranose-(1-4)-2-acetamido-2-deoxy-beta-D-glucopyranose-(1-4)-2-acetamido-2-deoxy-beta-D-glucopyranose.



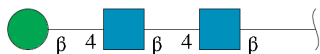
Mol	Chain	Residues	Atoms				AltConf	Trace
6	G	5	Total	C	N	O	0	0
			61	34	2	25		
6	H	5	Total	C	N	O	0	0
			61	34	2	25		

- Molecule 7 is an oligosaccharide called alpha-D-mannopyranose-(1-2)-alpha-D-mannopyranose-(1-3)-[alpha-D-mannopyranose-(1-6)]beta-D-mannopyranose-(1-4)-2-acetamido-2-deoxy-beta-D-glucopyranose-(1-4)-2-acetamido-2-deoxy-beta-D-glucopyranose.



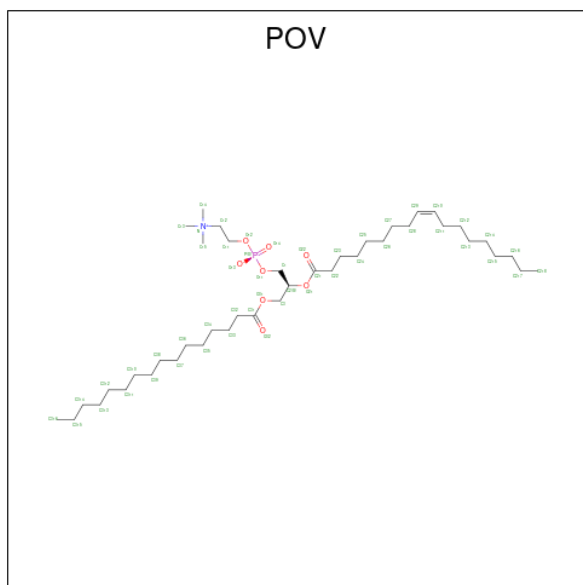
Mol	Chain	Residues	Atoms				AltConf	Trace
7	I	6	Total	C	N	O	0	0
			72	40	2	30		

- Molecule 8 is an oligosaccharide called beta-D-mannopyranose-(1-4)-2-acetamido-2-deoxy-beta-D-glucopyranose-(1-4)-2-acetamido-2-deoxy-beta-D-glucopyranose.



Mol	Chain	Residues	Atoms				AltConf	Trace
			Total	C	N	O		
8	J	3	39	22	2	15	0	0

- Molecule 9 is (2S)-3-(hexadecanoyloxy)-2-[(9Z)-octadec-9-enoyloxy]propyl 2-(trimethylamm onio)ethyl phosphate (three-letter code: POV) (formula: C<sub>42</sub>H<sub>82</sub>NO<sub>8</sub>P) (labeled as "Ligand of Interest" by depositor).



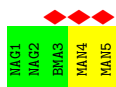
Mol	Chain	Residues	Atoms					AltConf
			Total	C	N	O	P	
9	A	1	74	54	2	16	2	0
9	A	1	74	54	2	16	2	0
9	B	1	32	22	1	8	1	0
9	C	1	142	112	3	24	3	0
9	C	1	142	112	3	24	3	0
9	C	1	142	112	3	24	3	0
9	D	1	73	59	1	12	1	0
9	D	1	73	59	1	12	1	0
9	E	1	36	26	1	8	1	0



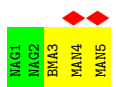




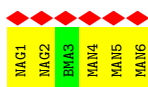




- Molecule 6: alpha-D-mannopyranose-(1-3)-[alpha-D-mannopyranose-(1-6)]beta-D-mannopyranose-(1-4)-2-acetamido-2-deoxy-beta-D-glucopyranose-(1-4)-2-acetamido-2-deoxy-beta-D-glucopyranose



- Molecule 7: alpha-D-mannopyranose-(1-2)-alpha-D-mannopyranose-(1-3)-[alpha-D-mannopyranose-(1-6)]beta-D-mannopyranose-(1-4)-2-acetamido-2-deoxy-beta-D-glucopyranose-(1-4)-2-acetamido-2-deoxy-beta-D-glucopyranose



- Molecule 8: beta-D-mannopyranose-(1-4)-2-acetamido-2-deoxy-beta-D-glucopyranose-(1-4)-2-acetamido-2-deoxy-beta-D-glucopyranose



## 4 Experimental information

Property	Value	Source
EM reconstruction method	SINGLE PARTICLE	Depositor
Imposed symmetry	POINT, C1	Depositor
Number of particles used	68038	Depositor
Resolution determination method	FSC 0.143 CUT-OFF	Depositor
CTF correction method	PHASE FLIPPING AND AMPLITUDE CORRECTION	Depositor
Microscope	TFS GLACIOS	Depositor
Voltage (kV)	200	Depositor
Electron dose ( $e^-/\text{\AA}^2$ )	40	Depositor
Minimum defocus (nm)	700	Depositor
Maximum defocus (nm)	2200	Depositor
Magnification	Not provided	
Image detector	GATAN K2 SUMMIT (4k x 4k)	Depositor
Maximum map value	1.823	Depositor
Minimum map value	-1.175	Depositor
Average map value	0.000	Depositor
Map value standard deviation	0.061	Depositor
Recommended contour level	0.324	Depositor
Map size (Å)	293.12, 293.12, 293.12	wwPDB
Map dimensions	256, 256, 256	wwPDB
Map angles (°)	90.0, 90.0, 90.0	wwPDB
Pixel spacing (Å)	1.145, 1.145, 1.145	Depositor

## 5 Model quality [i](#)

### 5.1 Standard geometry [i](#)

Bond lengths and bond angles in the following residue types are not validated in this section: POV, NAG, BMA, MAN

The Z score for a bond length (or angle) is the number of standard deviations the observed value is removed from the expected value. A bond length (or angle) with  $|Z| > 5$  is considered an outlier worth inspection. RMSZ is the root-mean-square of all Z scores of the bond lengths (or angles).

Mol	Chain	Bond lengths		Bond angles	
		RMSZ	# Z  >5	RMSZ	# Z  >5
1	A	0.25	0/3296	0.45	0/4493
1	D	0.25	0/3174	0.45	0/4332
2	B	0.25	0/3304	0.44	0/4513
3	C	0.25	0/3503	0.45	0/4784
4	E	0.26	0/3364	0.45	0/4591
All	All	0.25	0/16641	0.45	0/22713

There are no bond length outliers.

There are no bond angle outliers.

There are no chirality outliers.

There are no planarity outliers.

### 5.2 Too-close contacts [i](#)

In the following table, the Non-H and H(model) columns list the number of non-hydrogen atoms and hydrogen atoms in the chain respectively. The H(added) column lists the number of hydrogen atoms added and optimized by MolProbity. The Clashes column lists the number of clashes within the asymmetric unit, whereas Symm-Clashes lists symmetry-related clashes.

Mol	Chain	Non-H	H(model)	H(added)	Clashes	Symm-Clashes
1	A	3210	0	3244	60	0
1	D	3089	0	3107	66	0
2	B	3218	0	3232	46	0
3	C	3408	0	3390	57	0
4	E	3278	0	3278	63	0
5	F	83	0	70	0	0
5	K	83	0	70	1	0
5	L	83	0	70	0	0

*Continued on next page...*

Continued from previous page...

Mol	Chain	Non-H	H(model)	H(added)	Clashes	Symm-Clashes
6	G	61	0	52	0	0
6	H	61	0	52	0	0
7	I	72	0	61	1	0
8	J	39	0	34	0	0
9	A	74	0	94	2	0
9	B	32	0	38	1	0
9	C	142	0	209	3	0
9	D	73	0	106	2	0
9	E	36	0	44	0	0
All	All	17042	0	17151	266	0

The all-atom clashscore is defined as the number of clashes found per 1000 atoms (including hydrogen atoms). The all-atom clashscore for this structure is 8.

All (266) close contacts within the same asymmetric unit are listed below, sorted by their clash magnitude.

Atom-1	Atom-2	Interatomic distance (Å)	Clash overlap (Å)
3:C:243:ALA:HB2	3:C:263:VAL:HG11	1.52	0.92
2:B:232:SER:HG	2:B:447:CYS:HG	1.23	0.77
1:A:19:ILE:HG12	4:E:5:GLY:HA2	1.69	0.75
3:C:239:ILE:HG22	3:C:263:VAL:HG13	1.72	0.71
4:E:92:LEU:O	4:E:95:ASN:ND2	2.25	0.69
1:A:286:ILE:HG21	4:E:232:LEU:HD12	1.75	0.68
1:A:218:VAL:HA	1:A:256:PHE:HZ	1.59	0.68
1:A:107:LYS:HB2	2:B:150:THR:HG21	1.77	0.67
3:C:81:ARG:HE	3:C:111:LEU:HD22	1.60	0.67
3:C:226:LEU:HD21	1:D:271:VAL:HG22	1.76	0.67
4:E:147:ARG:NH2	4:E:208:GLU:OE1	2.29	0.66
4:E:33:LEU:HD21	4:E:90:VAL:HG11	1.76	0.66
1:A:94:ASN:ND2	1:A:126:SER:OG	2.29	0.65
4:E:19:ILE:O	4:E:64:ARG:NH2	2.30	0.65
1:D:417:ILE:HD11	9:D:502:POV:H314	1.80	0.64
1:A:235:LEU:HD12	1:A:236:PRO:HD2	1.78	0.64
2:B:265:LEU:HD12	3:C:272:LEU:HA	1.79	0.64
1:A:82:SER:HB2	1:A:87:LEU:HD11	1.80	0.64
1:D:218:VAL:HA	1:D:256:PHE:HZ	1.62	0.63
1:D:246:SER:HB3	1:D:289:ILE:HG12	1.79	0.63
1:A:20:ARG:HH12	1:A:155:LYS:HD2	1.65	0.62
1:D:238:ASP:HB2	4:E:309:LEU:HD23	1.81	0.61
4:E:312:PRO:HG3	4:E:436:GLU:HG2	1.83	0.61
1:D:259:VAL:HG22	4:E:267:PHE:HB2	1.81	0.61

Continued on next page...

*Continued from previous page...*

Atom-1	Atom-2	Interatomic distance (Å)	Clash overlap (Å)
1:D:235:LEU:HD12	1:D:236:PRO:HD2	1.82	0.60
3:C:291:TYR:HB2	3:C:472:ILE:HG21	1.83	0.60
1:A:158:ILE:O	1:A:185:LYS:NZ	2.33	0.60
3:C:235:PRO:O	3:C:239:ILE:HG12	2.02	0.60
1:D:163:ASP:OD2	1:D:182:ARG:NH2	2.34	0.60
2:B:317:TRP:O	2:B:321:ILE:HG22	2.02	0.59
1:A:150:THR:O	4:E:79:ARG:NH1	2.36	0.58
4:E:198:GLN:HG3	4:E:199:LEU:HD12	1.84	0.58
1:D:56:LEU:HD12	1:D:102:ILE:HD11	1.86	0.58
2:B:31:VAL:HG12	2:B:60:TRP:HB3	1.86	0.58
4:E:40:LEU:O	4:E:181:ASN:ND2	2.35	0.58
9:A:501:POV:O22	2:B:307:ARG:NH2	2.36	0.57
4:E:439:ASN:O	4:E:443:ILE:HG12	2.05	0.57
3:C:239:ILE:HD12	1:D:250:LEU:HD21	1.87	0.57
1:D:188:VAL:HG23	1:D:198:TYR:HB2	1.86	0.57
2:B:92:LEU:HD21	2:B:126:SER:HB3	1.87	0.56
4:E:169:GLU:OE1	4:E:485:ARG:NH2	2.37	0.56
1:A:318:ASP:N	1:A:318:ASP:OD1	2.37	0.56
4:E:229:PRO:O	4:E:233:ILE:HG12	2.06	0.56
3:C:140:ASP:OD2	3:C:142:GLN:NE2	2.38	0.56
1:D:279:LEU:HD22	9:D:502:POV:H27	1.87	0.56
1:A:290:ILE:HD13	4:E:239:LEU:HD11	1.88	0.55
4:E:138:ASP:OD2	4:E:140:GLN:NE2	2.38	0.55
1:D:50:VAL:HG11	1:D:142:CYS:SG	2.47	0.55
2:B:138:ASP:OD2	2:B:140:GLN:NE2	2.36	0.55
1:D:410:LEU:HA	1:D:413:VAL:HG12	1.89	0.55
1:A:77:LYS:HD3	1:A:109:LEU:HD11	1.89	0.55
2:B:270:VAL:HG11	2:B:281:ILE:HD11	1.88	0.55
1:D:257:LEU:HA	1:D:260:ILE:HG12	1.88	0.55
1:A:313:ARG:HD3	1:A:317:ILE:HG13	1.89	0.54
3:C:484:LYS:HE3	3:C:492:ASP:HB2	1.88	0.54
4:E:187:ARG:NH1	4:E:216:GLN:OE1	2.40	0.54
1:A:132:VAL:HG11	1:A:267:THR:HG21	1.90	0.54
1:A:231:LEU:HD21	2:B:296:ILE:HA	1.89	0.54
7:I:1:NAG:O3	7:I:2:NAG:N2	2.41	0.54
1:A:417:ILE:HA	1:A:420:ILE:HG12	1.89	0.53
2:B:163:ASP:OD1	2:B:164:ALA:N	2.37	0.53
3:C:191:GLU:OE2	3:C:222:ARG:NH2	2.41	0.53
1:A:315:ILE:O	1:A:319:THR:OG1	2.26	0.53
3:C:81:ARG:HH12	1:D:155:LYS:HG3	1.74	0.53
2:B:195:LYS:HG2	2:B:207:VAL:HG22	1.91	0.53

*Continued on next page...*

*Continued from previous page...*

Atom-1	Atom-2	Interatomic distance (Å)	Clash overlap (Å)
1:A:108:LEU:HD13	1:A:116:ILE:HG23	1.90	0.53
1:D:247:ILE:HD13	1:D:289:ILE:HD13	1.91	0.53
1:D:91:VAL:HG13	1:D:100:PHE:HB3	1.91	0.52
1:D:132:VAL:HG11	1:D:267:THR:HG21	1.91	0.52
1:A:250:LEU:HD21	4:E:233:ILE:HD12	1.90	0.52
3:C:51:THR:OG1	3:C:98:ASN:ND2	2.42	0.52
3:C:309:VAL:HG22	3:C:453:ILE:HG23	1.91	0.52
1:D:4:GLU:HG2	4:E:19:ILE:HD12	1.90	0.52
4:E:77:LEU:HD11	4:E:109:LEU:HB3	1.91	0.52
3:C:248:TYR:O	1:D:297:ASN:ND2	2.42	0.52
1:D:429:ARG:NH1	1:D:432:GLU:OE2	2.43	0.52
1:A:410:LEU:HA	1:A:413:VAL:HG12	1.92	0.51
2:B:232:SER:OG	2:B:447:CYS:SG	2.47	0.51
1:D:65:LEU:HD12	1:D:116:ILE:HD11	1.92	0.51
4:E:290:VAL:HA	4:E:293:VAL:HG12	1.92	0.51
1:D:232:VAL:HG23	1:D:245:LEU:HD23	1.91	0.51
4:E:94:ASN:HB2	4:E:127:THR:HG22	1.93	0.51
2:B:36:THR:HB	2:B:55:PHE:HB2	1.92	0.51
3:C:150:ALA:HB1	3:C:158:ILE:HD11	1.93	0.50
4:E:185:THR:OG1	4:E:218:LYS:NZ	2.31	0.50
1:D:215:VAL:HG22	1:D:219:ILE:HD12	1.93	0.50
2:B:244:ASP:OD1	2:B:305:HIS:NE2	2.44	0.50
1:D:82:SER:HB2	1:D:87:LEU:HD21	1.93	0.50
1:A:51:GLU:HG2	1:A:125:LYS:HG2	1.92	0.50
1:A:292:THR:HA	1:A:295:VAL:HG12	1.92	0.50
3:C:334:LEU:HA	3:C:337:ILE:HG22	1.92	0.50
3:C:5:GLU:HB3	1:D:19:ILE:HG13	1.91	0.50
1:D:231:LEU:HD21	4:E:299:MET:HA	1.93	0.50
9:C:601:POV:H37	9:C:601:POV:H27	1.94	0.50
3:C:8:ILE:HD12	3:C:82:LEU:HD21	1.93	0.50
1:D:313:ARG:HG3	1:D:317:ILE:HD12	1.93	0.50
2:B:152:ASP:HB2	2:B:203:SER:HB2	1.94	0.50
1:A:96:ALA:HB2	1:A:127:TYR:HB2	1.94	0.50
4:E:91:VAL:HB	4:E:100:PHE:HB3	1.94	0.50
4:E:108:VAL:HG12	4:E:118:TRP:CD1	2.47	0.49
4:E:73:GLU:OE1	4:E:73:GLU:N	2.45	0.49
1:A:246:SER:HB3	1:A:289:ILE:HG12	1.94	0.49
2:B:85:VAL:HG11	2:B:108:VAL:HG21	1.93	0.49
3:C:193:ILE:HD12	3:C:481:PRO:HG3	1.94	0.49
1:A:145:LYS:HG3	1:A:202:THR:HG22	1.93	0.49
1:A:286:ILE:HG13	4:E:232:LEU:HB3	1.94	0.49

*Continued on next page...*

*Continued from previous page...*

Atom-1	Atom-2	Interatomic distance (Å)	Clash overlap (Å)
1:A:295:VAL:HA	1:A:298:THR:HG22	1.94	0.49
2:B:3:MET:HG2	2:B:72:TYR:HD1	1.77	0.49
1:D:182:ARG:HB2	1:D:204:HIS:NE2	2.27	0.49
1:A:290:ILE:HD13	4:E:239:LEU:HD21	1.94	0.49
1:A:299:HIS:CE1	1:A:400:LYS:HG3	2.47	0.49
1:A:394:ASN:O	1:A:397:GLU:HG3	2.12	0.49
2:B:107:ASN:OD1	3:C:152:ASN:ND2	2.27	0.49
2:B:315:PRO:HG2	2:B:318:ILE:HB	1.95	0.49
3:C:35:LEU:HA	3:C:59:ASP:O	2.12	0.49
4:E:171:ILE:HG13	4:E:189:ARG:HB2	1.93	0.49
1:D:311:TRP:O	1:D:315:ILE:HG12	2.13	0.48
3:C:491:PHE:CE1	3:C:499:ARG:HB3	2.49	0.48
1:A:40:LEU:HD12	1:A:52:THR:HG22	1.96	0.48
2:B:249:MET:O	2:B:253:ILE:HG22	2.13	0.47
3:C:285:VAL:HG22	9:C:602:POV:H1	1.96	0.47
4:E:186:ILE:HD13	4:E:215:ILE:HG22	1.96	0.47
1:A:286:ILE:HD11	4:E:233:ILE:HD13	1.96	0.47
2:B:327:PRO:O	2:B:333:GLN:NE2	2.47	0.47
3:C:294:PHE:HA	9:C:602:POV:H38	1.96	0.47
1:D:21:PRO:HD3	1:D:86:TRP:CD2	2.49	0.47
4:E:269:ILE:HG13	4:E:270:ALA:N	2.29	0.47
4:E:427:THR:O	4:E:430:GLN:HG3	2.14	0.47
1:D:179:LYS:HE3	1:D:206:ILE:HG21	1.96	0.47
1:A:218:VAL:HG11	1:A:274:ILE:HD11	1.96	0.47
4:E:59:GLN:HA	4:E:116:MET:O	2.15	0.47
4:E:244:PRO:HB2	4:E:246:GLN:HG2	1.96	0.47
1:A:414:PHE:HA	1:A:417:ILE:HG22	1.96	0.47
2:B:4:GLU:HG3	2:B:78:LEU:HD11	1.96	0.47
1:D:282:MET:O	1:D:286:ILE:HG12	2.14	0.47
4:E:11:LEU:HB3	4:E:65:LEU:HD22	1.96	0.47
1:D:134:HIS:HB3	1:D:429:ARG:HG2	1.98	0.47
2:B:234:LEU:O	2:B:238:VAL:HG23	2.14	0.46
2:B:95:ASN:HA	2:B:126:SER:HA	1.97	0.46
2:B:286:PHE:HB2	9:B:501:POV:H3A	1.96	0.46
4:E:137:PHE:HE2	4:E:223:ILE:HD11	1.79	0.46
2:B:41:LEU:HD12	2:B:51:THR:HG22	1.97	0.46
3:C:232:PHE:HE2	3:C:273:LEU:HB3	1.81	0.46
4:E:45:GLU:HG3	4:E:274:PRO:HG3	1.97	0.46
4:E:464:LEU:O	4:E:468:LEU:HB2	2.16	0.46
1:D:36:GLN:HB3	1:D:166:ASP:HB3	1.96	0.46
1:D:185:LYS:HZ1	1:D:199:LEU:HD13	1.81	0.46

*Continued on next page...*



*Continued from previous page...*

Atom-1	Atom-2	Interatomic distance (Å)	Clash overlap (Å)
4:E:68:ASN:OD1	4:E:70:SER:OG	2.24	0.46
3:C:196:PRO:HG2	3:C:218:TYR:HB2	1.98	0.46
1:D:260:ILE:HG13	1:D:261:VAL:N	2.31	0.46
2:B:231:ILE:HG21	2:B:259:VAL:HG23	1.98	0.46
1:D:260:ILE:HD13	1:D:278:MET:HG3	1.98	0.46
4:E:287:LEU:HD22	4:E:287:LEU:HA	1.71	0.46
1:D:96:ALA:HB2	1:D:127:TYR:HB2	1.97	0.45
1:D:158:ILE:O	1:D:185:LYS:NZ	2.33	0.45
2:B:173:ILE:HD11	2:B:209:PHE:HB3	1.99	0.45
3:C:165:ASP:OD1	3:C:166:THR:N	2.49	0.45
3:C:255:GLU:O	3:C:259:THR:HG22	2.16	0.45
1:D:145:LYS:HE3	1:D:200:ASP:OD2	2.17	0.45
3:C:188:GLY:O	3:C:189:GLU:HG2	2.15	0.45
4:E:426:SER:O	4:E:429:GLU:HG2	2.16	0.45
1:A:21:PRO:HD3	1:A:86:TRP:CD2	2.50	0.45
1:A:246:SER:O	1:A:249:VAL:HG12	2.16	0.45
2:B:293:PHE:HB3	2:B:443:PHE:HZ	1.82	0.45
1:D:237:THR:HG23	1:D:296:ILE:HG12	1.96	0.45
2:B:45:GLU:HG3	2:B:271:PRO:HG3	1.99	0.45
3:C:58:MET:O	3:C:122:PRO:HD2	2.17	0.45
4:E:243:LEU:HB2	4:E:251:LYS:HG2	1.99	0.45
4:E:40:LEU:HD11	4:E:50:LEU:HD11	1.98	0.45
3:C:229:VAL:HA	3:C:233:ILE:HB	1.99	0.45
1:A:160:PRO:HD3	1:A:185:LYS:HD2	1.99	0.45
1:D:186:HIS:HB2	1:D:200:ASP:OD1	2.17	0.45
4:E:43:LEU:HD12	4:E:50:LEU:HD13	1.98	0.45
2:B:247:GLU:HG2	3:C:257:MET:HB2	1.99	0.44
3:C:250:PRO:HG2	1:D:300:HIS:HB2	1.99	0.44
1:D:315:ILE:HG13	1:D:316:PHE:N	2.32	0.44
1:A:134:HIS:HB3	1:A:429:ARG:HG3	1.99	0.44
2:B:279:ILE:HD13	2:B:458:ALA:HB2	2.00	0.44
2:B:89:ASP:OD1	2:B:89:ASP:N	2.49	0.44
1:D:132:VAL:HG23	1:D:135:PHE:HB2	2.00	0.44
1:D:189:TYR:CZ	1:D:197:PRO:HB3	2.53	0.44
1:A:57:ARG:HG2	1:A:119:THR:HG22	2.00	0.44
3:C:172:TYR:HB3	3:C:498:PRO:HB2	1.99	0.44
1:A:43:VAL:HG22	1:A:50:VAL:HG22	1.99	0.44
4:E:307:VAL:HA	4:E:310:ARG:NE	2.33	0.44
1:D:220:ILE:HD13	1:D:223:LEU:HD12	1.99	0.44
4:E:307:VAL:HA	4:E:310:ARG:HE	1.82	0.44
4:E:325:PHE:HB2	4:E:443:ILE:HD12	1.99	0.44

*Continued on next page...*

*Continued from previous page...*

Atom-1	Atom-2	Interatomic distance (Å)	Clash overlap (Å)
3:C:35:LEU:HD13	3:C:58:MET:HE1	1.99	0.44
3:C:123:PRO:HB2	1:D:100:PHE:CZ	2.53	0.44
4:E:188:HIS:HB2	4:E:214:ILE:HG13	1.99	0.44
1:A:15:TYR:CE1	1:A:85:VAL:HA	2.53	0.44
2:B:194:ARG:HD3	2:B:469:ALA:C	2.38	0.44
2:B:43:LEU:HD23	2:B:186:TRP:CZ2	2.52	0.43
2:B:49:GLU:OE1	2:B:96:ASN:ND2	2.51	0.43
3:C:330:PHE:HA	3:C:334:LEU:HD23	2.00	0.43
1:A:182:ARG:HB2	1:A:204:HIS:NE2	2.33	0.43
3:C:78:SER:O	3:C:114:PRO:HD3	2.17	0.43
4:E:241:TYR:CB	4:E:452:PHE:HB2	2.47	0.43
1:A:301:ARG:HD2	1:A:306:HIS:CD2	2.53	0.43
2:B:78:LEU:HD12	2:B:78:LEU:HA	1.90	0.43
2:B:2:VAL:HG22	2:B:4:GLU:H	1.83	0.43
3:C:153:TYR:HB2	3:C:158:ILE:HG12	2.00	0.43
1:D:36:GLN:HG3	1:D:55:ARG:HB2	2.00	0.43
4:E:203:ASP:OD1	4:E:204:THR:N	2.52	0.43
3:C:315:ARG:HB2	3:C:446:TRP:CD2	2.54	0.43
1:A:218:VAL:HG13	1:A:260:ILE:HG12	2.00	0.43
3:C:256:LYS:HZ3	3:C:309:VAL:HG11	1.83	0.43
3:C:340:MET:HG2	3:C:455:ARG:HD2	2.00	0.43
1:D:320:ILE:HG21	1:D:405:VAL:HG13	2.00	0.43
4:E:117:TYR:CG	4:E:117:TYR:O	2.72	0.43
1:D:173:SER:OG	1:D:176:TRP:O	2.36	0.43
5:K:4:MAN:H61	5:K:6:MAN:H2	1.46	0.43
3:C:111:LEU:HB2	3:C:119:THR:HG22	2.00	0.42
3:C:204:ASP:OD1	3:C:204:ASP:N	2.50	0.42
3:C:33:ILE:HG12	3:C:90:PRO:HG3	2.01	0.42
1:D:255:VAL:O	1:D:259:VAL:HG23	2.19	0.42
4:E:172:HIS:O	4:E:172:HIS:ND1	2.52	0.42
1:A:104:HIS:NE2	2:B:98:GLY:O	2.52	0.42
1:A:247:ILE:HG21	4:E:257:SER:HB2	2.01	0.42
3:C:179:ILE:HG22	3:C:195:LYS:HE2	2.02	0.42
1:D:31:ILE:HG12	1:D:60:TRP:HB3	2.02	0.42
3:C:31:VAL:HB	3:C:158:ILE:HG22	2.02	0.42
2:B:200:ASP:OD1	2:B:200:ASP:N	2.53	0.41
3:C:162:LEU:HD13	3:C:162:LEU:HA	1.92	0.41
1:D:50:VAL:HG22	1:D:52:THR:HG23	2.01	0.41
1:A:91:VAL:HG13	1:A:100:PHE:HB3	2.02	0.41
2:B:463:PRO:HA	2:B:464:PRO:HD3	1.95	0.41
3:C:17:TYR:CE1	3:C:87:VAL:HA	2.55	0.41

*Continued on next page...*

Continued from previous page...

Atom-1	Atom-2	Interatomic distance (Å)	Clash overlap (Å)
3:C:154:ASP:OD1	3:C:154:ASP:N	2.40	0.41
3:C:179:ILE:HD11	3:C:184:PHE:CG	2.55	0.41
1:A:233:PHE:HB2	1:A:411:LEU:HB2	2.03	0.41
1:A:235:LEU:HD23	1:A:242:LYS:HA	2.02	0.41
3:C:109:ASN:HB2	1:D:150:THR:HG21	2.03	0.41
1:D:148:ILE:HG21	1:D:156:VAL:HG21	2.02	0.41
1:D:387:LYS:NZ	4:E:422:PHE:HB3	2.35	0.41
1:A:218:VAL:HA	1:A:256:PHE:CZ	2.47	0.41
1:A:237:THR:HG23	1:A:296:ILE:HG12	2.01	0.41
2:B:465:ASP:OD1	2:B:465:ASP:N	2.52	0.41
4:E:56:ILE:O	4:E:120:PRO:HD2	2.20	0.41
3:C:82:LEU:HD23	3:C:82:LEU:HA	1.90	0.41
1:D:148:ILE:HG13	1:D:156:VAL:HG21	2.02	0.41
1:D:417:ILE:HD12	1:D:417:ILE:HA	1.92	0.41
1:A:15:TYR:HE1	1:A:85:VAL:HA	1.85	0.41
1:A:150:THR:HG21	4:E:107:ASN:HB2	2.03	0.41
9:A:501:POV:H25	9:A:501:POV:H28	1.74	0.41
2:B:86:TRP:CZ3	2:B:88:PRO:HD3	2.55	0.41
3:C:179:ILE:HD11	3:C:184:PHE:CD2	2.56	0.41
3:C:292:LEU:HD12	3:C:292:LEU:HA	1.84	0.41
1:D:414:PHE:HA	1:D:417:ILE:HG22	2.02	0.41
4:E:132:VAL:O	4:E:281:PRO:HA	2.20	0.41
4:E:138:ASP:OD1	4:E:217:ARG:NH1	2.53	0.41
3:C:110:VAL:HG12	3:C:120:TRP:CG	2.55	0.41
1:D:218:VAL:HA	1:D:256:PHE:CZ	2.48	0.41
2:B:77:ASP:HB2	2:B:109:LEU:HD11	2.01	0.40
1:D:56:LEU:HD23	1:D:56:LEU:HA	1.94	0.40
4:E:169:GLU:O	4:E:191:ALA:N	2.53	0.40
1:A:178:MET:SD	1:A:207:MET:HG2	2.61	0.40
1:A:397:GLU:HA	1:A:400:LYS:HB2	2.04	0.40
4:E:192:LYS:HD2	4:E:480:PHE:CZ	2.56	0.40
1:A:174:GLY:HA2	2:B:275:LEU:HD23	2.04	0.40
1:A:232:VAL:HG21	1:A:246:SER:OG	2.22	0.40
1:A:31:ILE:HG13	1:A:60:TRP:HB3	2.04	0.40
1:D:291:ILE:CG2	1:D:410:LEU:HD13	2.52	0.40
1:A:247:ILE:O	1:A:251:LEU:HG	2.22	0.40
1:D:93:TYR:CD2	1:D:145:LYS:HE2	2.56	0.40

There are no symmetry-related clashes.

## 5.3 Torsion angles [i](#)

### 5.3.1 Protein backbone [i](#)

In the following table, the Percentiles column shows the percent Ramachandran outliers of the chain as a percentile score with respect to all PDB entries followed by that with respect to all EM entries.

The Analysed column shows the number of residues for which the backbone conformation was analysed, and the total number of residues.

Mol	Chain	Analysed	Favoured	Allowed	Outliers	Percentiles	
1	A	392/437 (90%)	384 (98%)	8 (2%)	0	100	100
1	D	376/437 (86%)	373 (99%)	3 (1%)	0	100	100
2	B	392/469 (84%)	383 (98%)	9 (2%)	0	100	100
3	C	416/501 (83%)	404 (97%)	12 (3%)	0	100	100
4	E	400/489 (82%)	394 (98%)	6 (2%)	0	100	100
All	All	1976/2333 (85%)	1938 (98%)	38 (2%)	0	100	100

There are no Ramachandran outliers to report.

### 5.3.2 Protein sidechains [i](#)

In the following table, the Percentiles column shows the percent sidechain outliers of the chain as a percentile score with respect to all PDB entries followed by that with respect to all EM entries.

The Analysed column shows the number of residues for which the sidechain conformation was analysed, and the total number of residues.

Mol	Chain	Analysed	Rotameric	Outliers	Percentiles	
1	A	369/405 (91%)	367 (100%)	2 (0%)	88	96
1	D	355/405 (88%)	354 (100%)	1 (0%)	92	98
2	B	366/431 (85%)	364 (100%)	2 (0%)	88	96
3	C	386/458 (84%)	383 (99%)	3 (1%)	81	94
4	E	368/446 (82%)	364 (99%)	4 (1%)	73	92
All	All	1844/2145 (86%)	1832 (99%)	12 (1%)	84	95

All (12) residues with a non-rotameric sidechain are listed below:

Mol	Chain	Res	Type
1	A	328	THR
1	A	407	ASP
2	B	33	VAL
2	B	275	LEU
3	C	80	LEU
3	C	166	THR
3	C	259	THR
1	D	40	LEU
4	E	280	VAL
4	E	287	LEU
4	E	300	ASN
4	E	448	ASP

Sometimes sidechains can be flipped to improve hydrogen bonding and reduce clashes. All (1) such sidechains are listed below:

Mol	Chain	Res	Type
4	E	262	GLN

### 5.3.3 RNA [i](#)

There are no RNA molecules in this entry.

## 5.4 Non-standard residues in protein, DNA, RNA chains [i](#)

There are no non-standard protein/DNA/RNA residues in this entry.

## 5.5 Carbohydrates [i](#)

40 monosaccharides are modelled in this entry.

In the following table, the Counts columns list the number of bonds (or angles) for which Mogul statistics could be retrieved, the number of bonds (or angles) that are observed in the model and the number of bonds (or angles) that are defined in the Chemical Component Dictionary. The Link column lists molecule types, if any, to which the group is linked. The Z score for a bond length (or angle) is the number of standard deviations the observed value is removed from the expected value. A bond length (or angle) with  $|Z| > 2$  is considered an outlier worth inspection. RMSZ is the root-mean-square of all Z scores of the bond lengths (or angles).

Mol	Type	Chain	Res	Link	Bond lengths			Bond angles		
					Counts	RMSZ	$\# Z  > 2$	Counts	RMSZ	$\# Z  > 2$
5	NAG	F	1	1,5	14,14,15	0.33	0	17,19,21	0.43	0

Mol	Type	Chain	Res	Link	Bond lengths			Bond angles		
					Counts	RMSZ	# Z  > 2	Counts	RMSZ	# Z  > 2
5	NAG	F	2	5	14,14,15	0.19	0	17,19,21	0.62	0
5	BMA	F	3	5	11,11,12	0.54	0	15,15,17	0.82	0
5	MAN	F	4	5	11,11,12	0.58	0	15,15,17	0.97	1 (6%)
5	MAN	F	5	5	11,11,12	0.65	0	15,15,17	0.88	1 (6%)
5	MAN	F	6	5	11,11,12	0.73	1 (9%)	15,15,17	1.04	2 (13%)
5	MAN	F	7	5	11,11,12	0.65	0	15,15,17	0.91	1 (6%)
6	NAG	G	1	6,2	14,14,15	0.18	0	17,19,21	0.45	0
6	NAG	G	2	6	14,14,15	0.24	0	17,19,21	0.47	0
6	BMA	G	3	6	11,11,12	0.60	0	15,15,17	0.69	0
6	MAN	G	4	6	11,11,12	0.62	0	15,15,17	0.98	2 (13%)
6	MAN	G	5	6	11,11,12	0.72	0	15,15,17	1.17	2 (13%)
6	NAG	H	1	6,3	14,14,15	0.22	0	17,19,21	0.44	0
6	NAG	H	2	6	14,14,15	0.44	0	17,19,21	0.39	0
6	BMA	H	3	6	11,11,12	1.14	2 (18%)	15,15,17	1.33	3 (20%)
6	MAN	H	4	6	11,11,12	0.71	1 (9%)	15,15,17	1.14	2 (13%)
6	MAN	H	5	6	11,11,12	0.66	0	15,15,17	1.10	2 (13%)
7	NAG	I	1	7,3	14,14,15	0.21	0	17,19,21	0.56	0
7	NAG	I	2	7	14,14,15	0.50	0	17,19,21	0.49	0
7	BMA	I	3	7	11,11,12	0.80	0	15,15,17	0.81	0
7	MAN	I	4	7	11,11,12	0.72	0	15,15,17	0.92	1 (6%)
7	MAN	I	5	7	11,11,12	0.88	1 (9%)	15,15,17	1.35	2 (13%)
7	MAN	I	6	7	11,11,12	0.85	1 (9%)	15,15,17	1.30	2 (13%)
8	NAG	J	1	8,3	14,14,15	0.19	0	17,19,21	0.40	0
8	NAG	J	2	8	14,14,15	0.40	0	17,19,21	0.35	0
8	BMA	J	3	8	11,11,12	0.66	0	15,15,17	0.86	0
5	NAG	K	1	1,5	14,14,15	0.38	0	17,19,21	0.43	0
5	NAG	K	2	5	14,14,15	0.20	0	17,19,21	0.59	0
5	BMA	K	3	5	11,11,12	0.47	0	15,15,17	0.75	0
5	MAN	K	4	5	11,11,12	0.61	0	15,15,17	0.96	1 (6%)
5	MAN	K	5	5	11,11,12	0.70	0	15,15,17	0.83	1 (6%)
5	MAN	K	6	5	11,11,12	0.77	1 (9%)	15,15,17	1.08	2 (13%)
5	MAN	K	7	5	11,11,12	0.64	0	15,15,17	0.91	1 (6%)
5	NAG	L	1	4,5	14,14,15	0.24	0	17,19,21	0.41	0
5	NAG	L	2	5	14,14,15	0.21	0	17,19,21	0.43	0
5	BMA	L	3	5	11,11,12	0.54	0	15,15,17	0.78	0
5	MAN	L	4	5	11,11,12	0.70	0	15,15,17	0.95	2 (13%)
5	MAN	L	5	5	11,11,12	0.97	0	15,15,17	1.01	1 (6%)
5	MAN	L	6	5	11,11,12	0.76	0	15,15,17	1.18	2 (13%)

Mol	Type	Chain	Res	Link	Bond lengths			Bond angles		
					Counts	RMSZ	# Z  > 2	Counts	RMSZ	# Z  > 2
5	MAN	L	7	5	11,11,12	0.66	0	15,15,17	0.97	2 (13%)

In the following table, the Chirals column lists the number of chiral outliers, the number of chiral centers analysed, the number of these observed in the model and the number defined in the Chemical Component Dictionary. Similar counts are reported in the Torsion and Rings columns. '-' means no outliers of that kind were identified.

Mol	Type	Chain	Res	Link	Chirals	Torsions	Rings
5	NAG	F	1	1,5	-	2/6/23/26	0/1/1/1
5	NAG	F	2	5	-	3/6/23/26	0/1/1/1
5	BMA	F	3	5	-	2/2/19/22	0/1/1/1
5	MAN	F	4	5	-	2/2/19/22	0/1/1/1
5	MAN	F	5	5	-	1/2/19/22	0/1/1/1
5	MAN	F	6	5	-	1/2/19/22	0/1/1/1
5	MAN	F	7	5	-	0/2/19/22	0/1/1/1
6	NAG	G	1	6,2	-	2/6/23/26	0/1/1/1
6	NAG	G	2	6	-	0/6/23/26	0/1/1/1
6	BMA	G	3	6	-	2/2/19/22	0/1/1/1
6	MAN	G	4	6	-	0/2/19/22	0/1/1/1
6	MAN	G	5	6	-	0/2/19/22	1/1/1/1
6	NAG	H	1	6,3	-	4/6/23/26	0/1/1/1
6	NAG	H	2	6	-	2/6/23/26	0/1/1/1
6	BMA	H	3	6	-	0/2/19/22	0/1/1/1
6	MAN	H	4	6	-	0/2/19/22	0/1/1/1
6	MAN	H	5	6	-	0/2/19/22	0/1/1/1
7	NAG	I	1	7,3	-	3/6/23/26	0/1/1/1
7	NAG	I	2	7	-	3/6/23/26	0/1/1/1
7	BMA	I	3	7	-	2/2/19/22	0/1/1/1
7	MAN	I	4	7	-	0/2/19/22	0/1/1/1
7	MAN	I	5	7	-	0/2/19/22	0/1/1/1
7	MAN	I	6	7	-	1/2/19/22	0/1/1/1
8	NAG	J	1	8,3	-	2/6/23/26	0/1/1/1
8	NAG	J	2	8	-	0/6/23/26	0/1/1/1
8	BMA	J	3	8	-	0/2/19/22	0/1/1/1
5	NAG	K	1	1,5	-	2/6/23/26	0/1/1/1
5	NAG	K	2	5	-	3/6/23/26	0/1/1/1
5	BMA	K	3	5	-	2/2/19/22	0/1/1/1
5	MAN	K	4	5	-	2/2/19/22	0/1/1/1
5	MAN	K	5	5	-	1/2/19/22	0/1/1/1

Continued on next page...

Continued from previous page...

Mol	Type	Chain	Res	Link	Chirals	Torsions	Rings
5	MAN	K	6	5	-	1/2/19/22	0/1/1/1
5	MAN	K	7	5	-	0/2/19/22	0/1/1/1
5	NAG	L	1	4,5	-	0/6/23/26	0/1/1/1
5	NAG	L	2	5	-	2/6/23/26	0/1/1/1
5	BMA	L	3	5	-	0/2/19/22	0/1/1/1
5	MAN	L	4	5	-	2/2/19/22	0/1/1/1
5	MAN	L	5	5	-	0/2/19/22	0/1/1/1
5	MAN	L	6	5	-	0/2/19/22	1/1/1/1
5	MAN	L	7	5	-	0/2/19/22	0/1/1/1

All (7) bond length outliers are listed below:

Mol	Chain	Res	Type	Atoms	Z	Observed(Å)	Ideal(Å)
6	H	3	BMA	C4-C5	2.42	1.58	1.53
7	I	5	MAN	C1-C2	2.25	1.57	1.52
5	K	6	MAN	C1-C2	2.21	1.57	1.52
6	H	3	BMA	C4-C3	2.11	1.57	1.52
6	H	4	MAN	C1-C2	2.08	1.56	1.52
5	F	6	MAN	C1-C2	2.06	1.56	1.52
7	I	6	MAN	C1-C2	2.04	1.56	1.52

All (33) bond angle outliers are listed below:

Mol	Chain	Res	Type	Atoms	Z	Observed(°)	Ideal(°)
7	I	5	MAN	C1-O5-C5	3.61	117.08	112.19
7	I	6	MAN	C1-O5-C5	3.46	116.89	112.19
6	G	5	MAN	C1-O5-C5	3.32	116.69	112.19
5	L	6	MAN	C1-O5-C5	3.24	116.58	112.19
6	H	5	MAN	C1-O5-C5	2.88	116.09	112.19
6	H	3	BMA	C3-C4-C5	2.73	115.11	110.24
6	H	4	MAN	C1-O5-C5	2.63	115.76	112.19
5	K	4	MAN	O2-C2-C3	-2.41	105.31	110.14
5	L	7	MAN	O2-C2-C3	-2.32	105.48	110.14
5	K	6	MAN	O2-C2-C3	-2.32	105.50	110.14
5	F	4	MAN	O2-C2-C3	-2.30	105.53	110.14
6	G	4	MAN	C1-O5-C5	2.30	115.30	112.19
6	G	5	MAN	O2-C2-C3	-2.29	105.54	110.14
5	L	4	MAN	O2-C2-C3	-2.27	105.59	110.14
5	F	6	MAN	C1-O5-C5	2.27	115.27	112.19
7	I	5	MAN	O2-C2-C3	-2.27	105.60	110.14
5	K	6	MAN	C1-O5-C5	2.25	115.24	112.19
5	K	5	MAN	O2-C2-C3	-2.24	105.65	110.14

Continued on next page...



*Continued from previous page...*

Mol	Chain	Res	Type	Atoms	Z	Observed(°)	Ideal(°)
5	F	6	MAN	O2-C2-C3	-2.23	105.67	110.14
6	H	4	MAN	O2-C2-C3	-2.23	105.67	110.14
6	H	5	MAN	O2-C2-C3	-2.23	105.68	110.14
6	G	4	MAN	O2-C2-C3	-2.22	105.69	110.14
5	F	7	MAN	O2-C2-C3	-2.20	105.72	110.14
7	I	6	MAN	O2-C2-C3	-2.20	105.73	110.14
5	F	5	MAN	O2-C2-C3	-2.18	105.76	110.14
5	L	5	MAN	O2-C2-C3	-2.18	105.77	110.14
5	K	7	MAN	O2-C2-C3	-2.18	105.78	110.14
6	H	3	BMA	C2-C3-C4	2.17	114.65	110.89
5	L	4	MAN	C1-O5-C5	2.17	115.13	112.19
5	L	7	MAN	C1-O5-C5	2.16	115.12	112.19
5	L	6	MAN	O2-C2-C3	-2.15	105.83	110.14
6	H	3	BMA	O5-C1-C2	-2.14	107.46	110.77
7	I	4	MAN	O2-C2-C3	-2.05	106.03	110.14

There are no chirality outliers.

All (47) torsion outliers are listed below:

Mol	Chain	Res	Type	Atoms
6	G	3	BMA	C4-C5-C6-O6
6	G	1	NAG	O5-C5-C6-O6
5	F	4	MAN	O5-C5-C6-O6
5	K	1	NAG	O5-C5-C6-O6
5	L	4	MAN	O5-C5-C6-O6
7	I	2	NAG	O5-C5-C6-O6
5	F	1	NAG	O5-C5-C6-O6
6	G	3	BMA	O5-C5-C6-O6
5	K	3	BMA	C4-C5-C6-O6
6	G	1	NAG	C4-C5-C6-O6
5	K	4	MAN	O5-C5-C6-O6
5	L	2	NAG	C4-C5-C6-O6
5	K	2	NAG	O5-C5-C6-O6
5	F	3	BMA	C4-C5-C6-O6
6	H	2	NAG	C4-C5-C6-O6
5	K	2	NAG	C4-C5-C6-O6
5	K	4	MAN	C4-C5-C6-O6
7	I	2	NAG	C4-C5-C6-O6
5	F	4	MAN	C4-C5-C6-O6
6	H	1	NAG	C8-C7-N2-C2
6	H	1	NAG	O7-C7-N2-C2
8	J	1	NAG	O5-C5-C6-O6

*Continued on next page...*

Continued from previous page...

Mol	Chain	Res	Type	Atoms
5	L	2	NAG	O5-C5-C6-O6
5	F	1	NAG	C4-C5-C6-O6
8	J	1	NAG	C4-C5-C6-O6
7	I	1	NAG	O5-C5-C6-O6
5	K	1	NAG	C4-C5-C6-O6
5	F	6	MAN	O5-C5-C6-O6
7	I	3	BMA	C4-C5-C6-O6
5	L	4	MAN	C4-C5-C6-O6
6	H	1	NAG	O5-C5-C6-O6
6	H	2	NAG	O5-C5-C6-O6
5	K	3	BMA	O5-C5-C6-O6
5	F	5	MAN	O5-C5-C6-O6
5	F	3	BMA	O5-C5-C6-O6
7	I	6	MAN	O5-C5-C6-O6
5	K	5	MAN	O5-C5-C6-O6
5	K	6	MAN	O5-C5-C6-O6
7	I	3	BMA	O5-C5-C6-O6
5	F	2	NAG	C3-C2-N2-C7
5	K	2	NAG	C3-C2-N2-C7
7	I	1	NAG	C3-C2-N2-C7
7	I	2	NAG	C3-C2-N2-C7
5	F	2	NAG	C4-C5-C6-O6
6	H	1	NAG	C4-C5-C6-O6
7	I	1	NAG	C4-C5-C6-O6
5	F	2	NAG	O5-C5-C6-O6

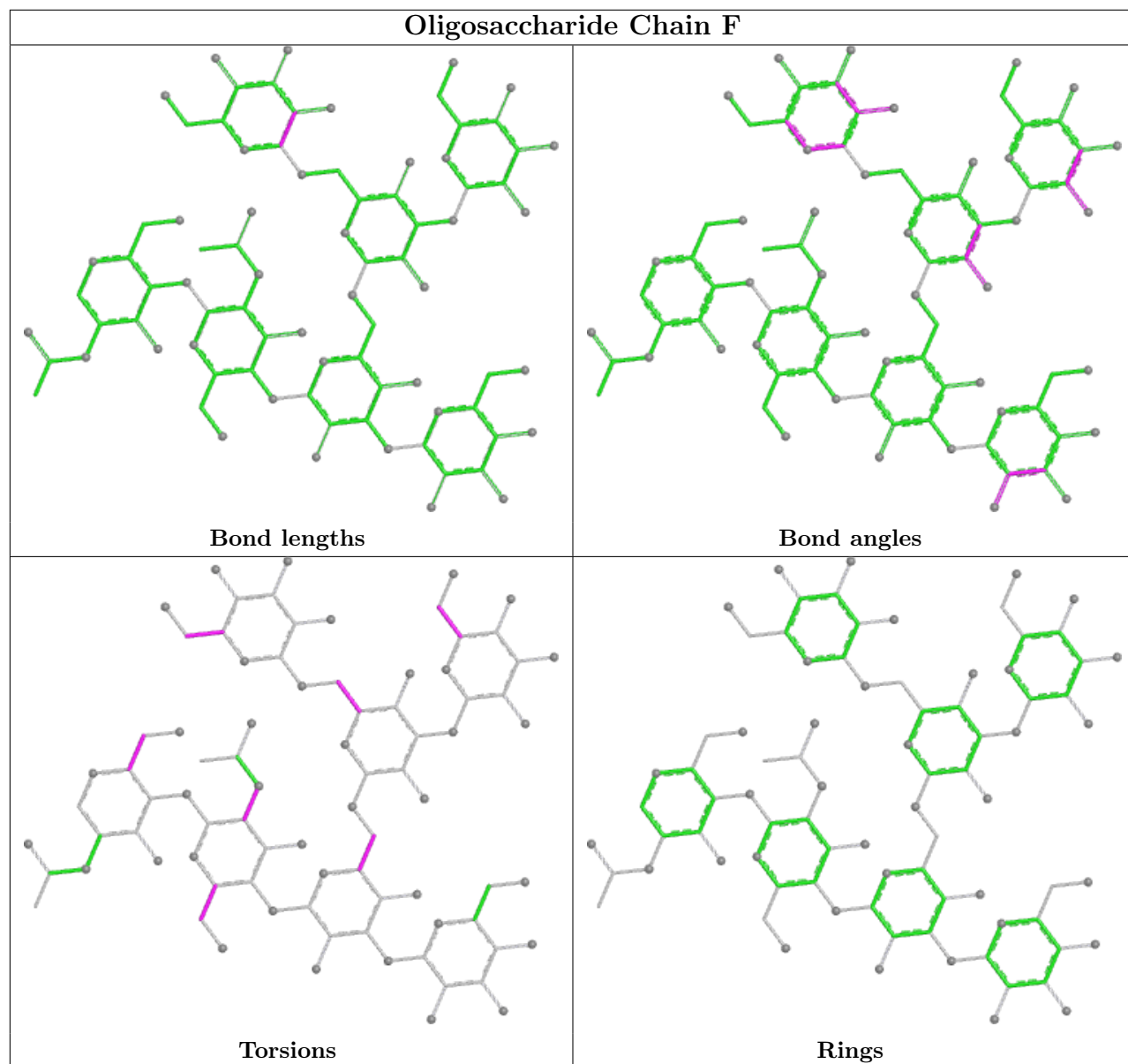
All (2) ring outliers are listed below:

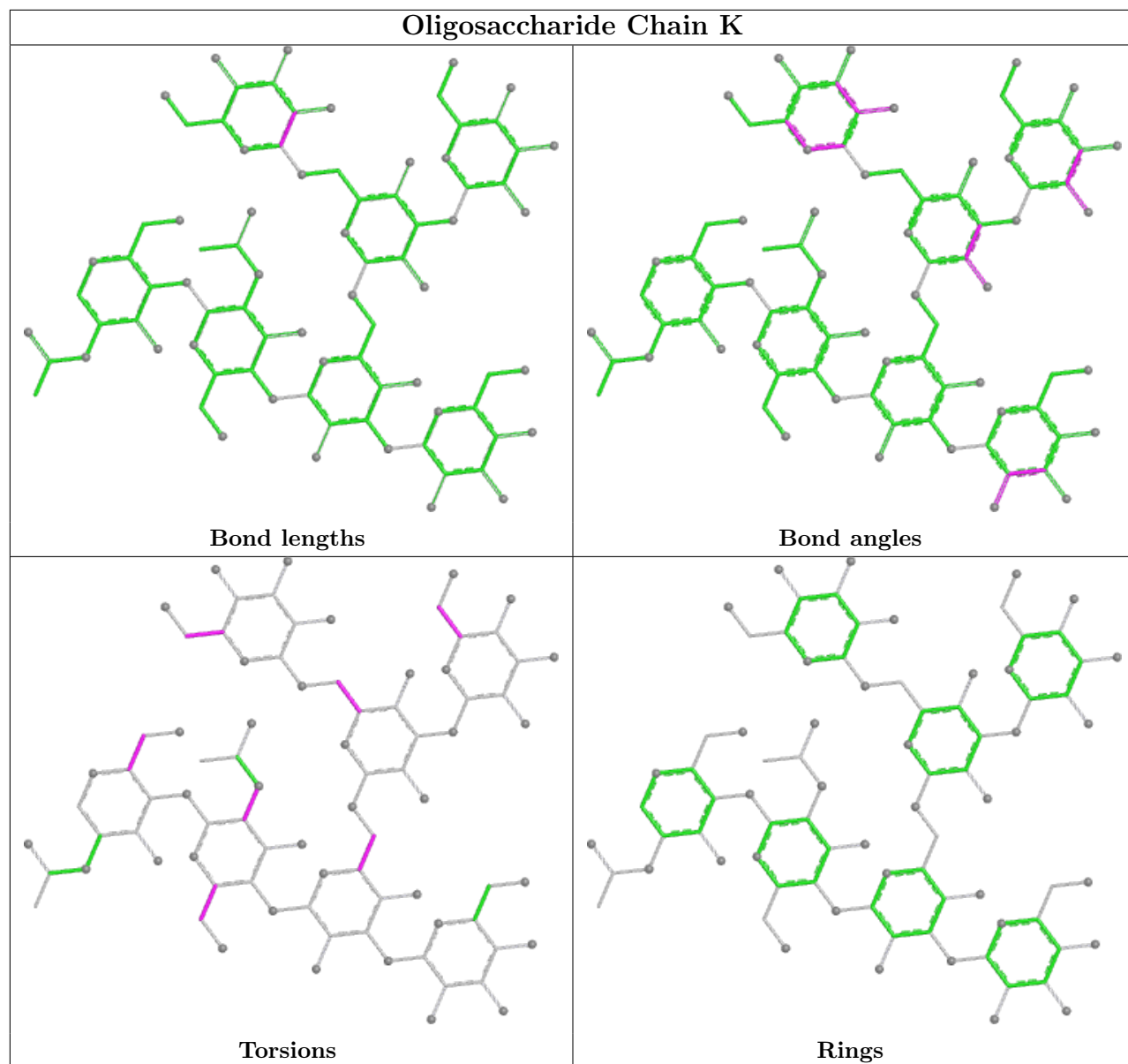
Mol	Chain	Res	Type	Atoms
5	L	6	MAN	C1-C2-C3-C4-C5-O5
6	G	5	MAN	C1-C2-C3-C4-C5-O5

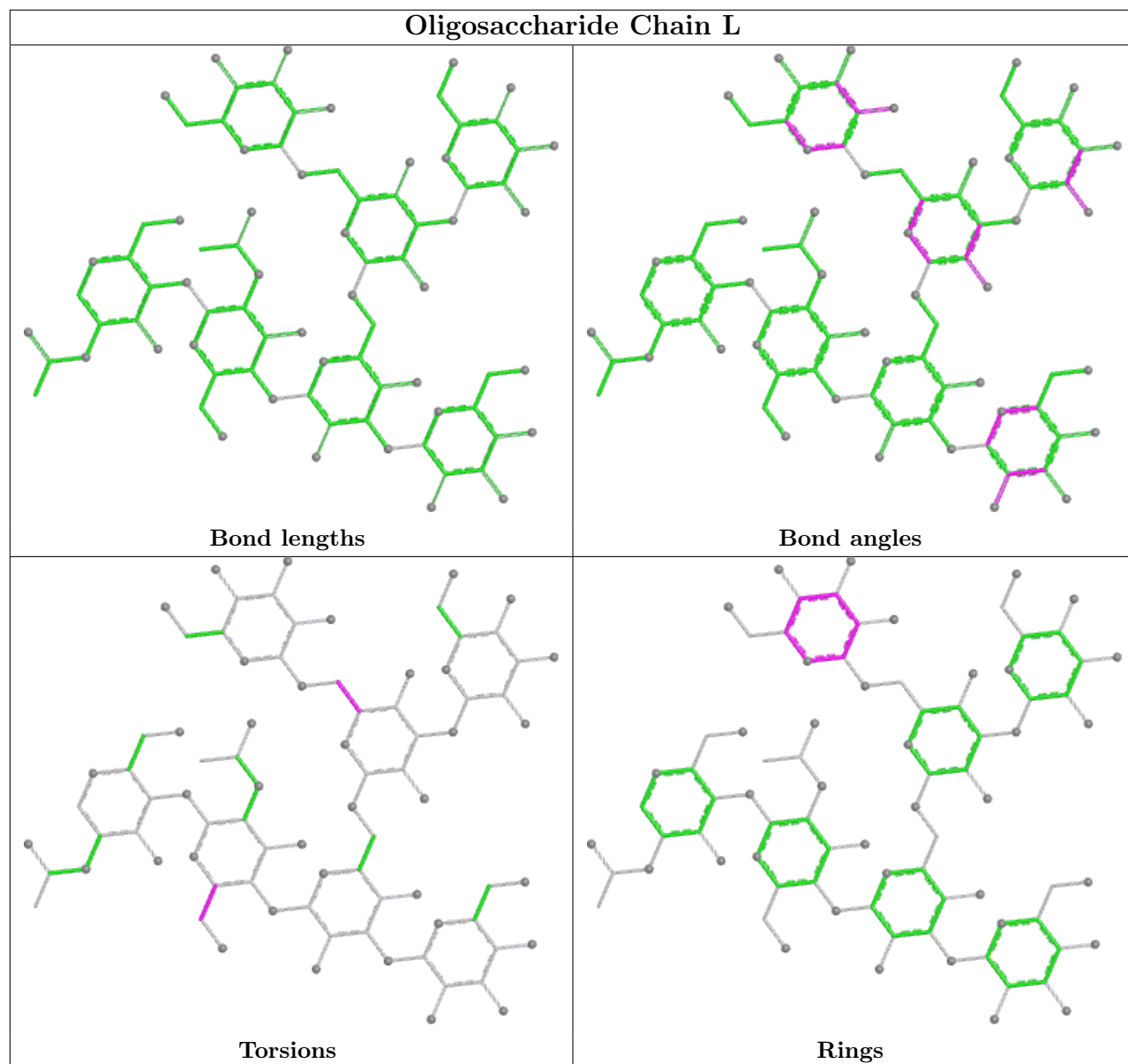
4 monomers are involved in 2 short contacts:

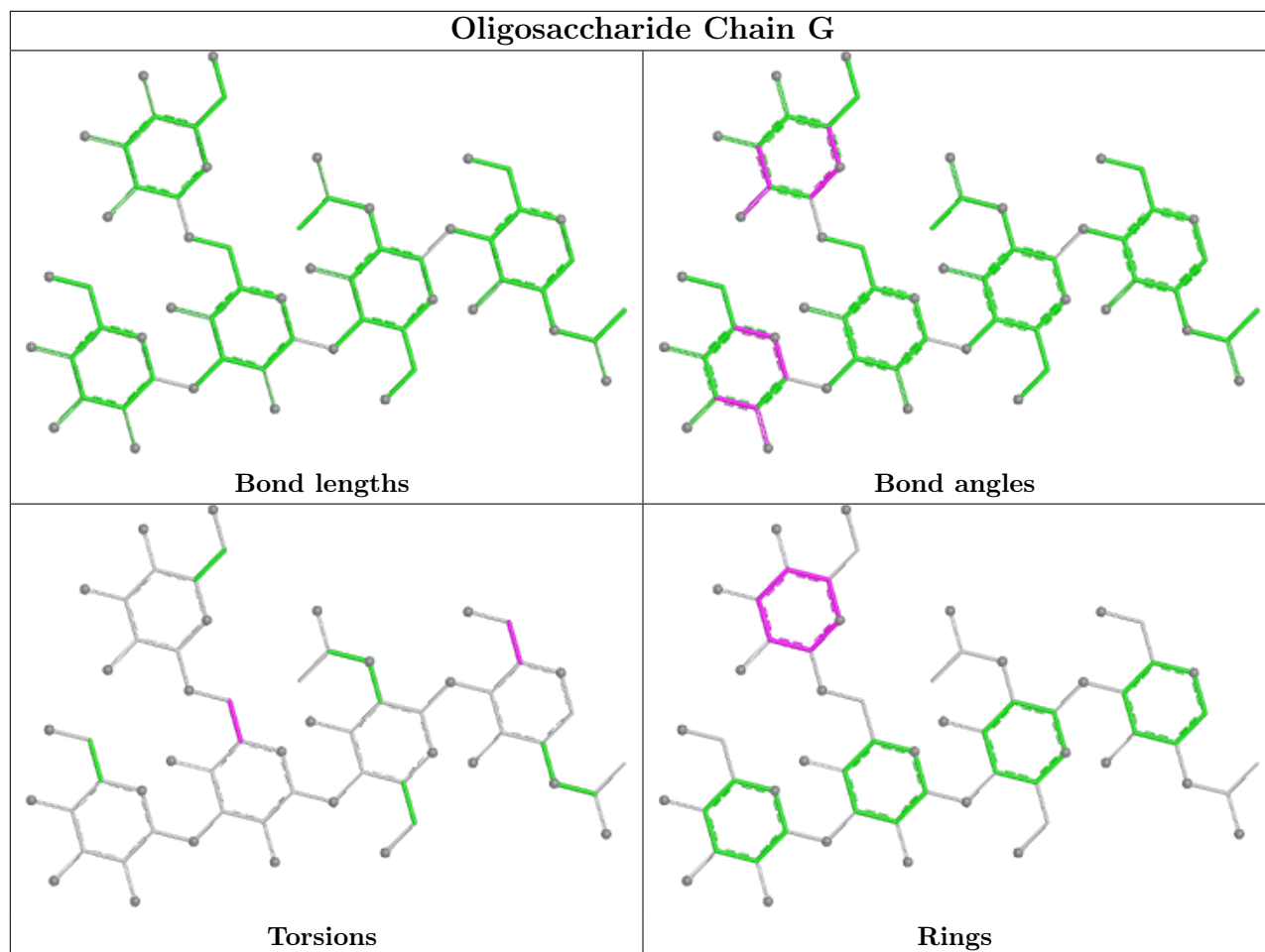
Mol	Chain	Res	Type	Clashes	Symm-Clashes
5	K	4	MAN	1	0
7	I	2	NAG	1	0
7	I	1	NAG	1	0
5	K	6	MAN	1	0

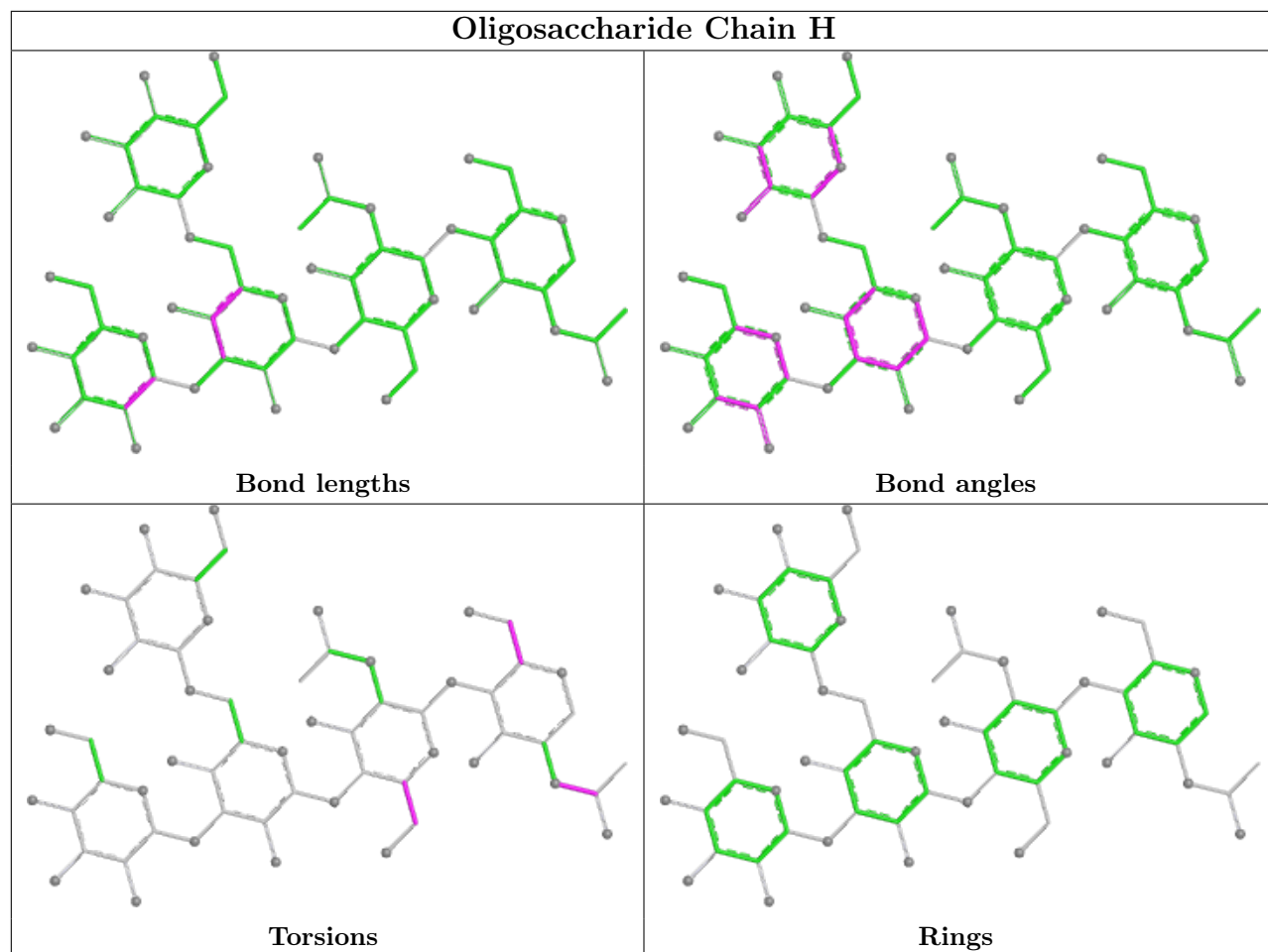
The following is a two-dimensional graphical depiction of Mogul quality analysis of bond lengths, bond angles, torsion angles, and ring geometry for oligosaccharide.

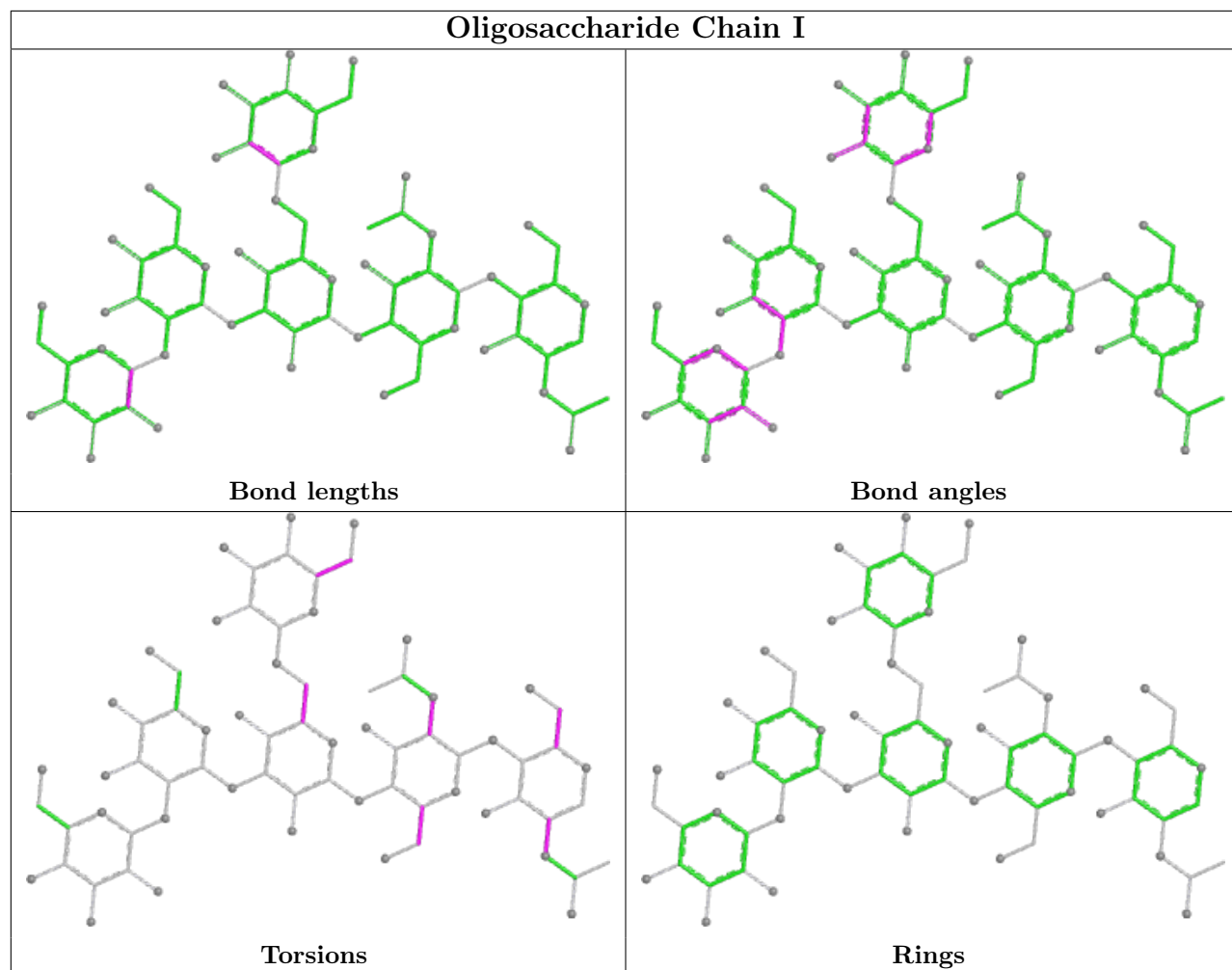




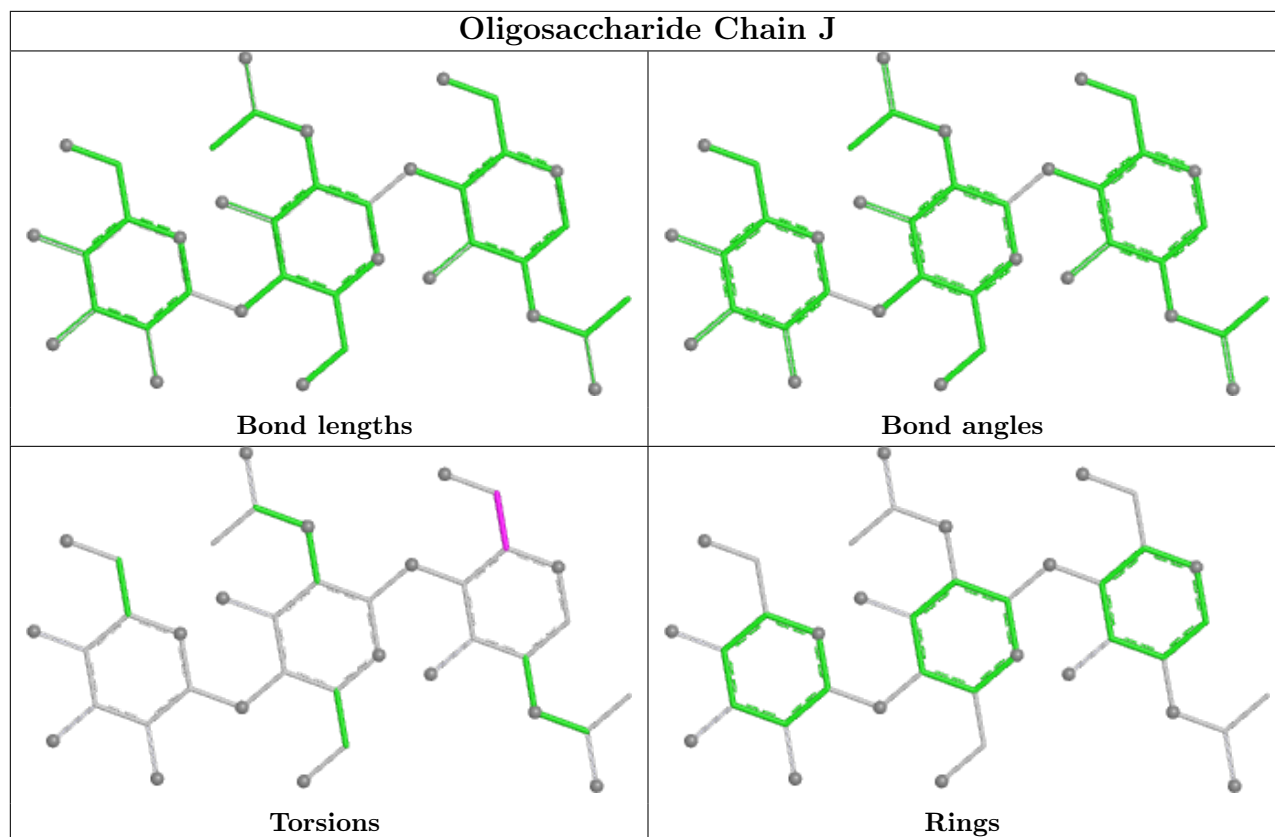












## 5.6 Ligand geometry [i](#)

9 ligands are modelled in this entry.

In the following table, the Counts columns list the number of bonds (or angles) for which Mogul statistics could be retrieved, the number of bonds (or angles) that are observed in the model and the number of bonds (or angles) that are defined in the Chemical Component Dictionary. The Link column lists molecule types, if any, to which the group is linked. The Z score for a bond length (or angle) is the number of standard deviations the observed value is removed from the expected value. A bond length (or angle) with  $|Z| > 2$  is considered an outlier worth inspection. RMSZ is the root-mean-square of all Z scores of the bond lengths (or angles).

Mol	Type	Chain	Res	Link	Bond lengths			Bond angles		
					Counts	RMSZ	# Z  > 2	Counts	RMSZ	# Z  > 2
9	POV	D	501	-	32,32,51	1.32	3 (9%)	38,40,59	1.07	3 (7%)
9	POV	C	601	-	48,48,51	1.20	3 (6%)	54,56,59	1.02	4 (7%)
9	POV	C	602	-	51,51,51	1.16	3 (5%)	57,59,59	0.95	3 (5%)
9	POV	B	501	-	31,31,51	1.34	3 (9%)	37,39,59	1.12	3 (8%)
9	POV	E	501	-	35,35,51	1.30	3 (8%)	41,43,59	1.09	3 (7%)
9	POV	C	603	-	40,40,51	1.25	3 (7%)	46,48,59	1.02	3 (6%)
9	POV	A	502	-	32,32,51	1.37	3 (9%)	38,40,59	1.05	3 (7%)
9	POV	A	501	-	40,40,51	1.25	3 (7%)	45,48,59	1.03	3 (6%)

Mol	Type	Chain	Res	Link	Bond lengths			Bond angles		
					Counts	RMSZ	# Z  > 2	Counts	RMSZ	# Z  > 2
9	POV	D	502	-	39,39,51	1.15	2 (5%)	40,40,59	0.79	2 (5%)

In the following table, the Chirals column lists the number of chiral outliers, the number of chiral centers analysed, the number of these observed in the model and the number defined in the Chemical Component Dictionary. Similar counts are reported in the Torsion and Rings columns. '-' means no outliers of that kind were identified.

Mol	Type	Chain	Res	Link	Chirals	Torsions	Rings
9	POV	D	501	-	-	23/36/36/55	-
9	POV	C	601	-	-	26/52/52/55	-
9	POV	C	602	-	-	29/55/55/55	-
9	POV	B	501	-	-	24/35/35/55	-
9	POV	E	501	-	-	22/39/39/55	-
9	POV	C	603	-	-	25/44/44/55	-
9	POV	A	502	-	-	9/36/36/55	-
9	POV	A	501	-	-	26/44/44/55	-
9	POV	D	502	-	-	28/39/39/55	-

All (26) bond length outliers are listed below:

Mol	Chain	Res	Type	Atoms	Z	Observed(Å)	Ideal(Å)
9	C	601	POV	O31-C31	3.46	1.43	1.33
9	A	502	POV	O31-C31	3.45	1.43	1.33
9	C	603	POV	O31-C31	3.26	1.42	1.33
9	C	602	POV	O31-C31	3.25	1.42	1.33
9	A	501	POV	O31-C31	3.24	1.42	1.33
9	E	501	POV	O31-C31	3.23	1.42	1.33
9	B	501	POV	O31-C31	3.22	1.42	1.33
9	D	501	POV	O31-C31	3.20	1.42	1.33
9	D	502	POV	O31-C31	3.19	1.42	1.33
9	D	502	POV	O21-C21	2.99	1.42	1.33
9	C	601	POV	O21-C21	2.91	1.42	1.34
9	A	502	POV	O21-C21	2.91	1.42	1.34
9	B	501	POV	O21-C21	2.87	1.42	1.34
9	C	602	POV	O21-C21	2.84	1.42	1.34
9	D	501	POV	O21-C21	2.82	1.42	1.34
9	A	501	POV	O21-C21	2.80	1.42	1.34
9	E	501	POV	O21-C21	2.78	1.42	1.34
9	C	601	POV	O21-C2	-2.75	1.39	1.46
9	C	603	POV	O21-C21	2.75	1.42	1.34

*Continued on next page...*

Continued from previous page...

Mol	Chain	Res	Type	Atoms	Z	Observed(Å)	Ideal(Å)
9	A	502	POV	O21-C2	-2.74	1.39	1.46
9	C	603	POV	O21-C2	-2.54	1.40	1.46
9	C	602	POV	O21-C2	-2.49	1.40	1.46
9	E	501	POV	O21-C2	-2.47	1.40	1.46
9	A	501	POV	O21-C2	-2.46	1.40	1.46
9	D	501	POV	O21-C2	-2.45	1.40	1.46
9	B	501	POV	O21-C2	-2.39	1.40	1.46

All (27) bond angle outliers are listed below:

Mol	Chain	Res	Type	Atoms	Z	Observed(°)	Ideal(°)
9	C	602	POV	O21-C21-C22	4.15	120.44	111.50
9	A	501	POV	O21-C21-C22	4.05	120.23	111.50
9	B	501	POV	O21-C21-C22	4.01	120.15	111.50
9	C	601	POV	O21-C21-C22	3.98	120.09	111.50
9	E	501	POV	O21-C21-C22	3.93	119.97	111.50
9	C	603	POV	O21-C21-C22	3.92	119.94	111.50
9	D	501	POV	O21-C21-C22	3.79	119.68	111.50
9	A	502	POV	O21-C21-C22	3.75	119.58	111.50
9	C	601	POV	O31-C31-C32	2.94	121.14	111.91
9	B	501	POV	O31-C31-C32	2.64	120.19	111.91
9	D	501	POV	O31-C31-C32	2.62	120.13	111.91
9	C	603	POV	O31-C31-C32	2.62	120.12	111.91
9	D	502	POV	O31-C31-C32	2.61	120.11	111.91
9	A	501	POV	O31-C31-C32	2.60	120.08	111.91
9	C	602	POV	O31-C31-C32	2.58	120.01	111.91
9	E	501	POV	O31-C31-C32	2.56	119.95	111.91
9	A	502	POV	O31-C31-C32	2.56	119.93	111.91
9	D	502	POV	O21-C21-C22	2.53	119.84	111.91
9	C	601	POV	C13-N-C12	2.46	119.99	109.92
9	E	501	POV	C13-N-C12	2.41	119.78	109.92
9	A	502	POV	C13-N-C12	2.31	119.38	109.92
9	B	501	POV	C13-N-C12	2.29	119.27	109.92
9	A	501	POV	C13-N-C12	2.28	119.25	109.92
9	D	501	POV	C13-N-C12	2.27	119.20	109.92
9	C	603	POV	C13-N-C12	2.25	119.13	109.92
9	C	602	POV	C13-N-C12	2.22	119.01	109.92
9	C	601	POV	C2-O21-C21	-2.04	112.77	117.79

There are no chirality outliers.

All (212) torsion outliers are listed below:

Mol	Chain	Res	Type	Atoms
9	A	501	POV	C1-O11-P-O12
9	A	501	POV	C1-O11-P-O13
9	A	501	POV	C1-O11-P-O14
9	A	501	POV	C11-O12-P-O11
9	A	501	POV	C11-O12-P-O13
9	A	501	POV	C11-O12-P-O14
9	A	501	POV	O12-C11-C12-N
9	A	501	POV	C22-C21-O21-C2
9	A	502	POV	C11-O12-P-O11
9	A	502	POV	O12-C11-C12-N
9	B	501	POV	C11-O12-P-O14
9	B	501	POV	C22-C21-O21-C2
9	C	601	POV	C1-O11-P-O12
9	C	601	POV	C1-O11-P-O13
9	C	601	POV	C1-O11-P-O14
9	C	602	POV	O21-C2-C3-O31
9	C	602	POV	O22-C21-O21-C2
9	C	603	POV	C11-O12-P-O13
9	C	603	POV	C11-O12-P-O14
9	C	603	POV	O11-C1-C2-O21
9	C	603	POV	O12-C11-C12-N
9	C	603	POV	O22-C21-O21-C2
9	C	603	POV	C32-C31-O31-C3
9	C	603	POV	O32-C31-O31-C3
9	D	501	POV	C1-O11-P-O14
9	D	501	POV	C11-O12-P-O11
9	D	501	POV	C11-O12-P-O13
9	D	501	POV	C11-O12-P-O14
9	E	501	POV	O11-C1-C2-O21
9	A	501	POV	O32-C31-O31-C3
9	B	501	POV	O32-C31-O31-C3
9	C	602	POV	O32-C31-O31-C3
9	A	501	POV	C32-C31-O31-C3
9	B	501	POV	C32-C31-O31-C3
9	C	602	POV	C32-C31-O31-C3
9	D	502	POV	C22-C21-O21-C2
9	D	502	POV	O22-C21-O21-C2
9	A	501	POV	O22-C21-O21-C2
9	B	501	POV	O22-C21-O21-C2
9	C	602	POV	C22-C21-O21-C2
9	C	603	POV	C22-C21-O21-C2
9	E	501	POV	O32-C31-O31-C3
9	C	603	POV	C35-C36-C37-C38

*Continued on next page...*

*Continued from previous page...*

Mol	Chain	Res	Type	Atoms
9	D	502	POV	C211-C212-C213-C214
9	E	501	POV	C32-C31-O31-C3
9	A	501	POV	C25-C26-C27-C28
9	D	501	POV	C21-C22-C23-C24
9	C	601	POV	C11-C12-N-C13
9	E	501	POV	C11-C12-N-C13
9	E	501	POV	C11-C12-N-C15
9	C	601	POV	C32-C31-O31-C3
9	D	502	POV	C31-C32-C33-C34
9	D	501	POV	O21-C2-C3-O31
9	E	501	POV	O21-C2-C3-O31
9	D	502	POV	C32-C31-O31-C3
9	E	501	POV	C21-C22-C23-C24
9	C	601	POV	C11-C12-N-C14
9	B	501	POV	C21-C22-C23-C24
9	C	601	POV	O32-C31-O31-C3
9	D	502	POV	O32-C31-O31-C3
9	A	502	POV	C1-O11-P-O12
9	B	501	POV	C11-O12-P-O11
9	C	603	POV	C1-O11-P-O12
9	C	603	POV	C11-O12-P-O11
9	C	602	POV	C21-C22-C23-C24
9	C	601	POV	C35-C36-C37-C38
9	C	603	POV	C32-C33-C34-C35
9	C	601	POV	C23-C24-C25-C26
9	D	502	POV	C34-C35-C36-C37
9	E	501	POV	C32-C33-C34-C35
9	C	602	POV	C211-C212-C213-C214
9	D	502	POV	C311-C310-C39-C38
9	D	501	POV	C23-C24-C25-C26
9	D	501	POV	C25-C26-C27-C28
9	E	501	POV	C22-C23-C24-C25
9	C	601	POV	C311-C310-C39-C38
9	D	502	POV	C32-C33-C34-C35
9	C	601	POV	C211-C212-C213-C214
9	D	502	POV	C23-C24-C25-C26
9	D	502	POV	C35-C36-C37-C38
9	A	501	POV	C24-C25-C26-C27
9	B	501	POV	C32-C33-C34-C35
9	C	601	POV	C312-C313-C314-C315
9	C	602	POV	C312-C313-C314-C315
9	C	601	POV	C11-C12-N-C15

*Continued on next page...*

*Continued from previous page...*

Mol	Chain	Res	Type	Atoms
9	C	602	POV	C24-C25-C26-C27
9	C	603	POV	C311-C310-C39-C38
9	D	501	POV	C22-C23-C24-C25
9	C	602	POV	C311-C310-C39-C38
9	D	501	POV	C22-C21-O21-C2
9	A	501	POV	C34-C35-C36-C37
9	D	502	POV	C36-C37-C38-C39
9	C	603	POV	C33-C34-C35-C36
9	E	501	POV	C24-C25-C26-C27
9	A	501	POV	C35-C36-C37-C38
9	B	501	POV	C35-C36-C37-C38
9	C	602	POV	C32-C33-C34-C35
9	C	603	POV	C34-C35-C36-C37
9	E	501	POV	C11-C12-N-C14
9	B	501	POV	C33-C34-C35-C36
9	C	602	POV	C35-C36-C37-C38
9	D	501	POV	C24-C25-C26-C27
9	D	501	POV	O22-C21-O21-C2
9	D	502	POV	C21-C22-C23-C24
9	C	602	POV	C39-C310-C311-C312
9	C	602	POV	C37-C38-C39-C310
9	D	502	POV	C312-C313-C314-C315
9	C	602	POV	C310-C311-C312-C313
9	D	502	POV	C212-C213-C214-C215
9	A	501	POV	C32-C33-C34-C35
9	D	502	POV	C213-C214-C215-C216
9	B	501	POV	O11-C1-C2-C3
9	C	601	POV	O11-C1-C2-C3
9	D	502	POV	C39-C310-C311-C312
9	C	602	POV	C311-C312-C313-C314
9	C	602	POV	C212-C213-C214-C215
9	E	501	POV	C31-C32-C33-C34
9	C	602	POV	C22-C23-C24-C25
9	D	501	POV	C1-C2-C3-O31
9	E	501	POV	C1-C2-C3-O31
9	C	603	POV	C39-C310-C311-C312
9	D	502	POV	C37-C38-C39-C310
9	A	502	POV	C33-C34-C35-C36
9	C	601	POV	C36-C37-C38-C39
9	A	501	POV	C21-C22-C23-C24
9	C	603	POV	C21-C22-C23-C24
9	C	602	POV	C36-C37-C38-C39

*Continued on next page...*

*Continued from previous page...*

Mol	Chain	Res	Type	Atoms
9	A	501	POV	O21-C2-C3-O31
9	C	601	POV	C310-C311-C312-C313
9	D	502	POV	C24-C25-C26-C27
9	C	603	POV	O11-C1-C2-C3
9	E	501	POV	O11-C1-C2-C3
9	D	502	POV	C22-C23-C24-C25
9	C	601	POV	C39-C310-C311-C312
9	C	602	POV	C1-C2-C3-O31
9	B	501	POV	C23-C24-C25-C26
9	C	602	POV	C25-C26-C27-C28
9	C	601	POV	C26-C27-C28-C29
9	C	601	POV	C24-C25-C26-C27
9	A	502	POV	C26-C27-C28-C29
9	C	601	POV	C212-C213-C214-C215
9	A	501	POV	C311-C310-C39-C38
9	A	502	POV	C23-C24-C25-C26
9	A	501	POV	C1-C2-C3-O31
9	B	501	POV	O11-C1-C2-O21
9	C	601	POV	O11-C1-C2-O21
9	A	501	POV	C37-C38-C39-C310
9	C	603	POV	C37-C38-C39-C310
9	A	502	POV	C1-O11-P-O14
9	A	502	POV	C11-O12-P-O13
9	B	501	POV	C11-O12-P-O13
9	C	603	POV	C1-O11-P-O14
9	E	501	POV	C12-C11-O12-P
9	B	501	POV	C11-C12-N-C13
9	A	501	POV	C31-C32-C33-C34
9	B	501	POV	O12-C11-C12-N
9	C	602	POV	O12-C11-C12-N
9	D	501	POV	O12-C11-C12-N
9	B	501	POV	C3-C2-O21-C21
9	C	602	POV	C1-C2-O21-C21
9	C	603	POV	C22-C23-C24-C25
9	D	501	POV	C2-C1-O11-P
9	C	602	POV	C33-C34-C35-C36
9	E	501	POV	C11-O12-P-O11
9	D	502	POV	C25-C26-C27-C28
9	B	501	POV	C34-C35-C36-C37
9	C	602	POV	C26-C27-C28-C29
9	C	603	POV	C2-C1-O11-P
9	D	502	POV	C27-C28-C29-C210

*Continued on next page...*

*Continued from previous page...*

Mol	Chain	Res	Type	Atoms
9	A	501	POV	C22-C23-C24-C25
9	D	501	POV	C32-C33-C34-C35
9	B	501	POV	C11-C12-N-C14
9	C	603	POV	C25-C26-C27-C28
9	C	601	POV	C2-C1-O11-P
9	C	603	POV	C27-C28-C29-C210
9	D	501	POV	C1-C2-O21-C21
9	B	501	POV	C11-C12-N-C15
9	C	602	POV	C27-C28-C29-C210
9	D	501	POV	C33-C34-C35-C36
9	B	501	POV	O21-C2-C3-O31
9	D	502	POV	C311-C312-C313-C314
9	D	502	POV	O21-C21-C22-C23
9	A	501	POV	C27-C28-C29-C210
9	B	501	POV	O31-C31-C32-C33
9	D	501	POV	C26-C27-C28-C29
9	A	501	POV	O21-C21-C22-C23
9	E	501	POV	C34-C35-C36-C37
9	C	601	POV	O21-C21-C22-C23
9	D	501	POV	O31-C31-C32-C33
9	E	501	POV	O21-C21-C22-C23
9	A	501	POV	O22-C21-C22-C23
9	B	501	POV	O32-C31-C32-C33
9	D	501	POV	O32-C31-C32-C33
9	D	502	POV	O22-C21-C22-C23
9	B	501	POV	C1-C2-C3-O31
9	D	502	POV	C33-C34-C35-C36
9	C	602	POV	C215-C216-C217-C218
9	C	601	POV	O22-C21-O21-C2
9	C	603	POV	C1-O11-P-O13
9	E	501	POV	C1-O11-P-O14
9	E	501	POV	C11-O12-P-O14
9	E	501	POV	C33-C34-C35-C36
9	C	602	POV	C12-C11-O12-P
9	D	501	POV	C12-C11-O12-P
9	C	601	POV	O22-C21-C22-C23
9	C	601	POV	C25-C26-C27-C28
9	D	501	POV	O21-C21-C22-C23
9	D	502	POV	O21-C2-C3-O31
9	D	502	POV	C310-C311-C312-C313
9	C	602	POV	O21-C21-C22-C23
9	E	501	POV	O22-C21-C22-C23

*Continued on next page...*



*Continued from previous page...*

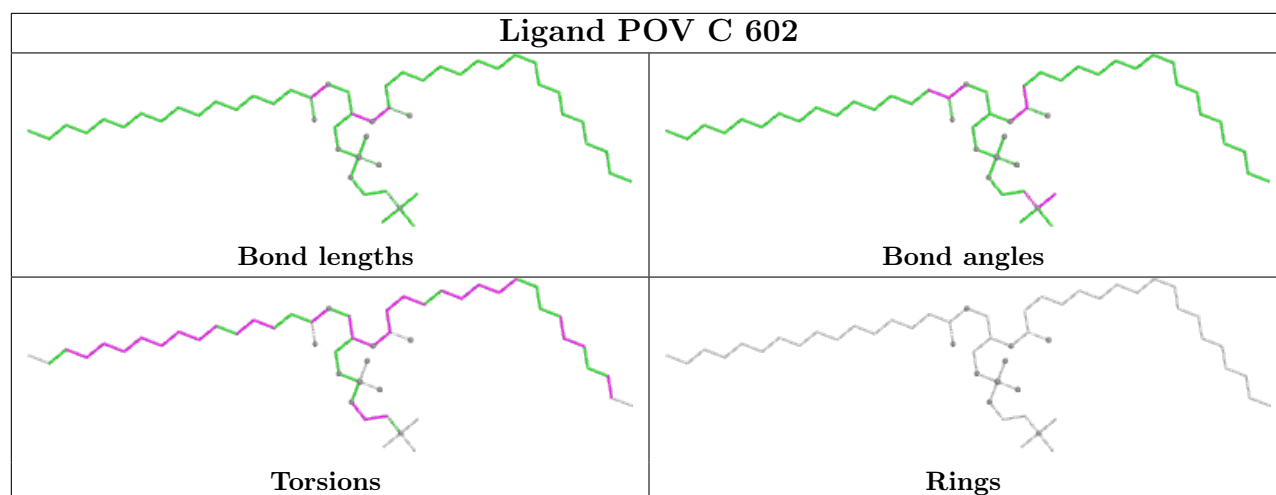
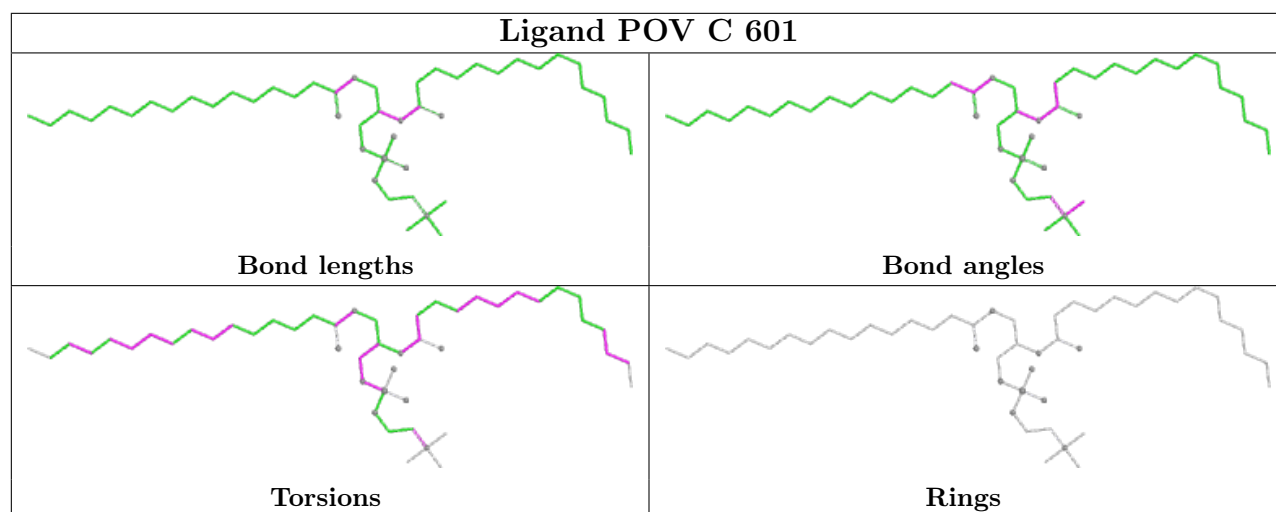
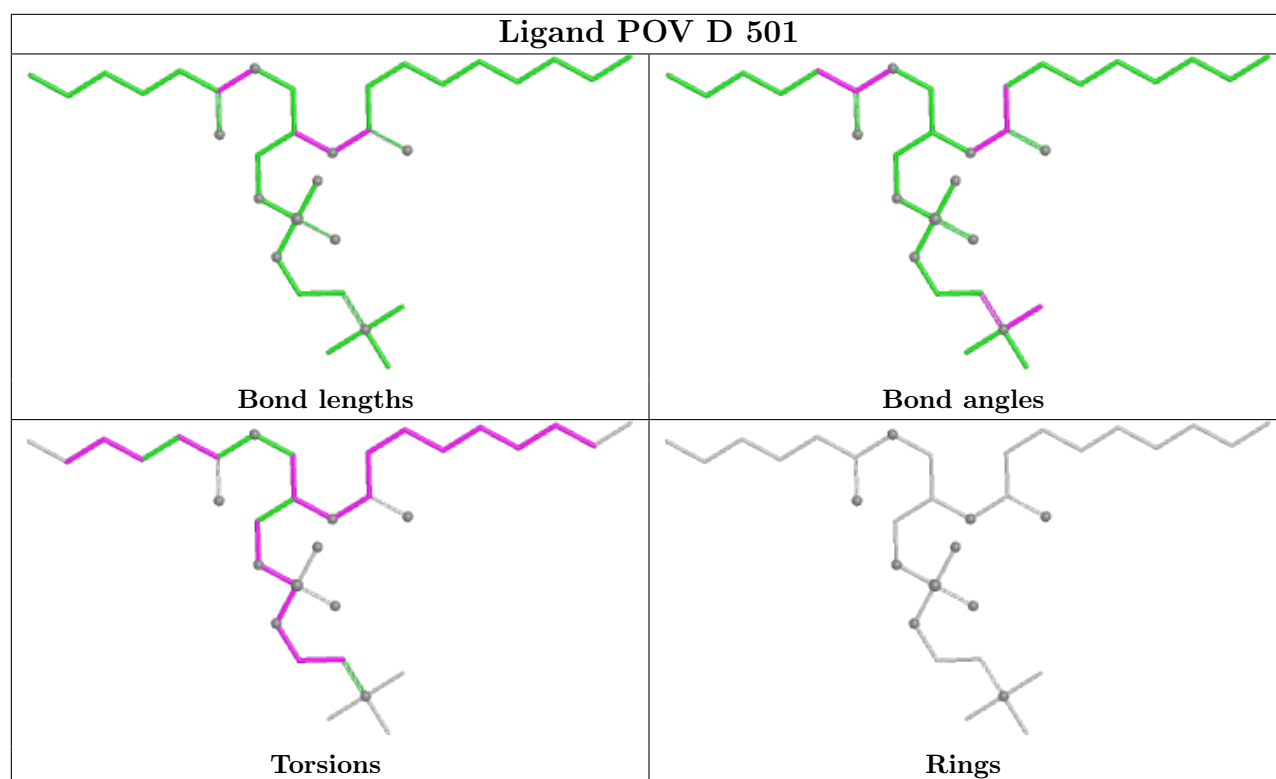
Mol	Chain	Res	Type	Atoms
9	A	502	POV	O32-C31-O31-C3

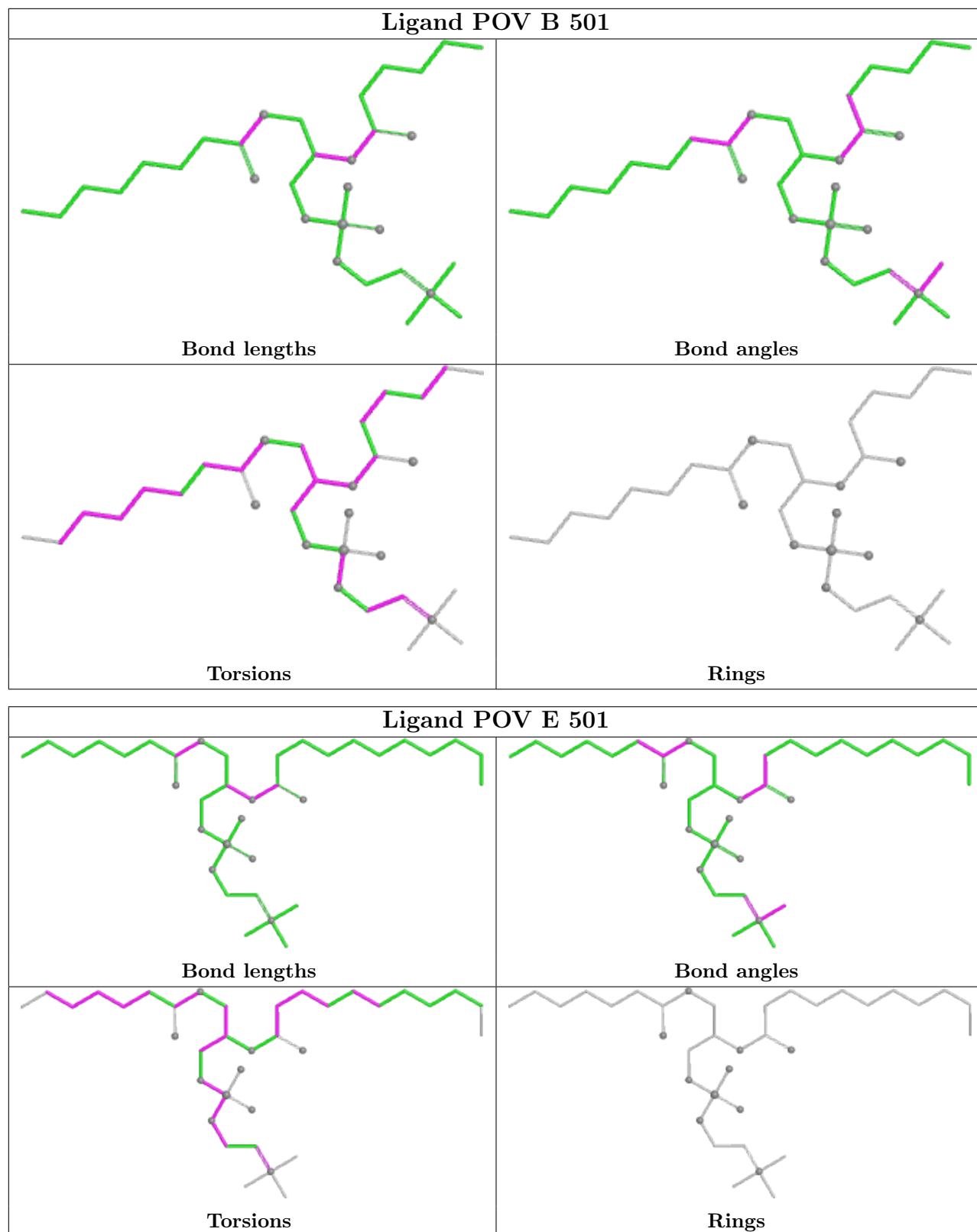
There are no ring outliers.

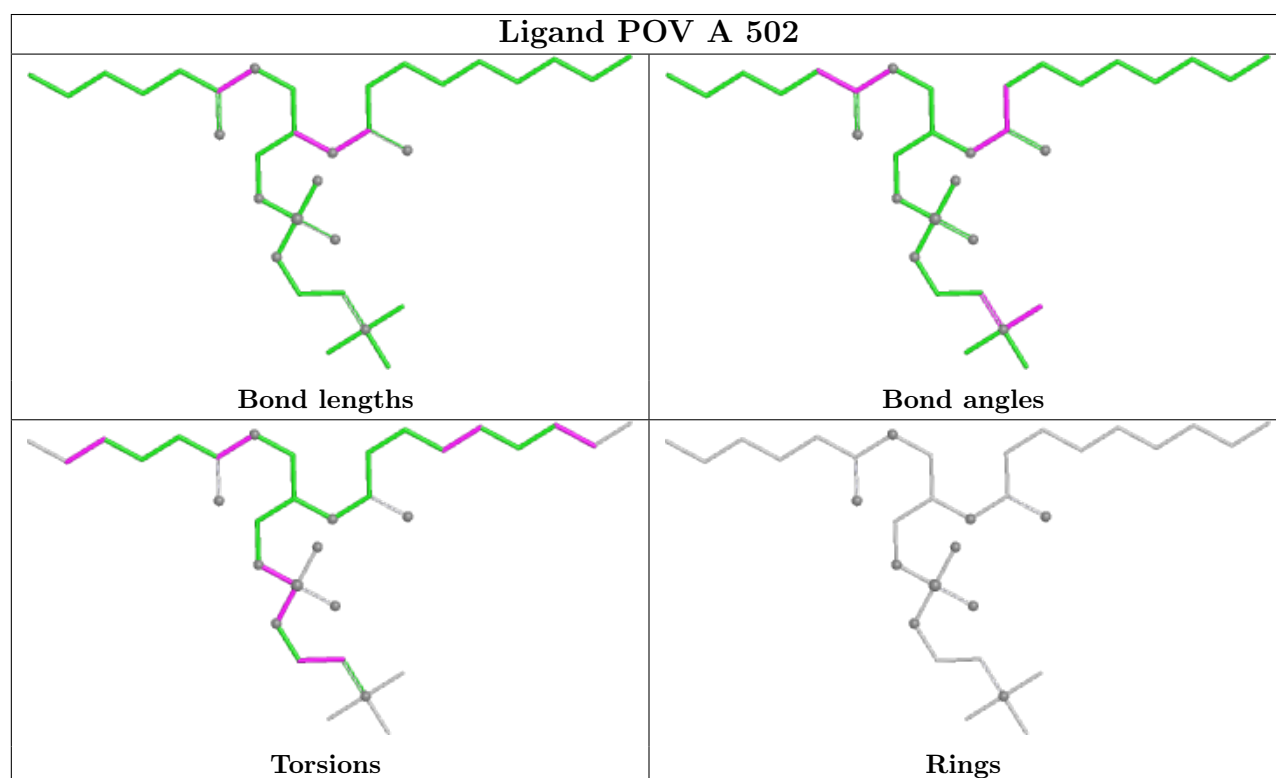
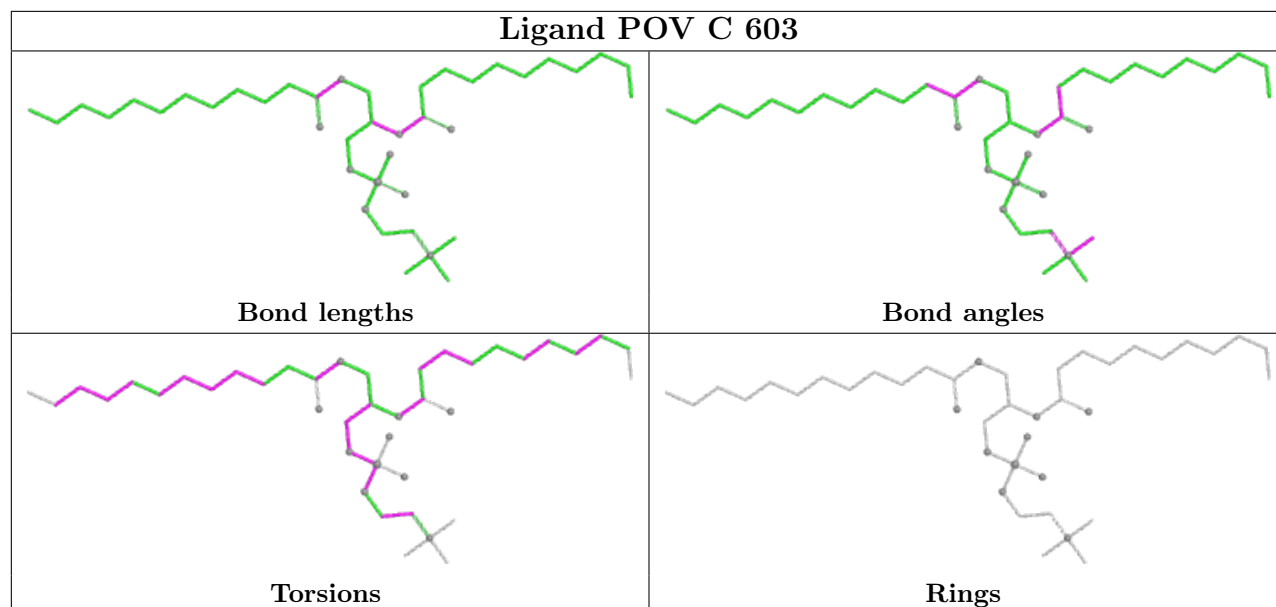
5 monomers are involved in 8 short contacts:

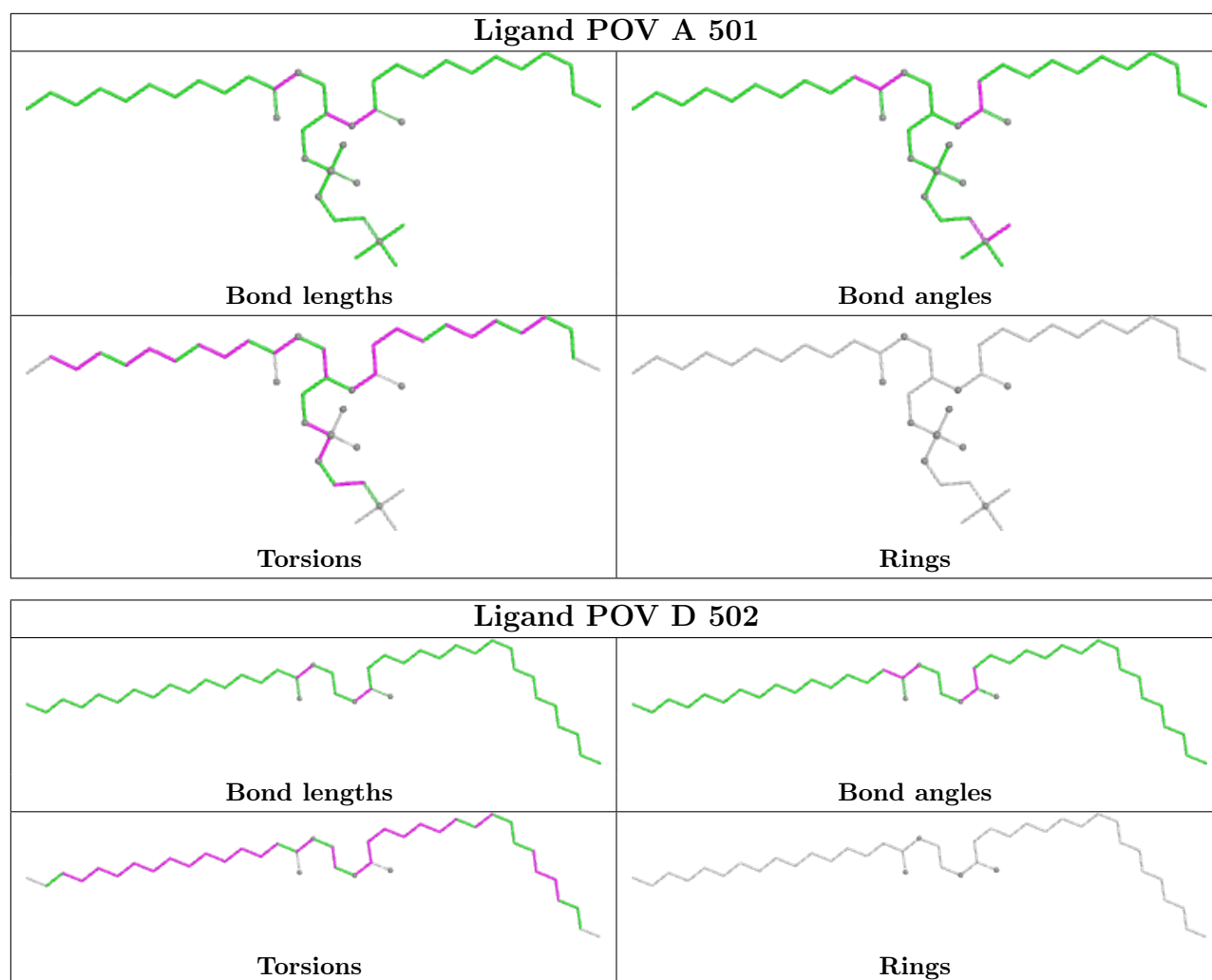
Mol	Chain	Res	Type	Clashes	Symm-Clashes
9	C	601	POV	1	0
9	C	602	POV	2	0
9	B	501	POV	1	0
9	A	501	POV	2	0
9	D	502	POV	2	0

The following is a two-dimensional graphical depiction of Mogul quality analysis of bond lengths, bond angles, torsion angles, and ring geometry for all instances of the Ligand of Interest. In addition, ligands with molecular weight > 250 and outliers as shown on the validation Tables will also be included. For torsion angles, if less than 5% of the Mogul distribution of torsion angles is within 10 degrees of the torsion angle in question, then that torsion angle is considered an outlier. Any bond that is central to one or more torsion angles identified as an outlier by Mogul will be highlighted in the graph. For rings, the root-mean-square deviation (RMSD) between the ring in question and similar rings identified by Mogul is calculated over all ring torsion angles. If the average RMSD is greater than 60 degrees and the minimal RMSD between the ring in question and any Mogul-identified rings is also greater than 60 degrees, then that ring is considered an outlier. The outliers are highlighted in purple. The color gray indicates Mogul did not find sufficient equivalents in the CSD to analyse the geometry.









## 5.7 Other polymers [i](#)

There are no such residues in this entry.

## 5.8 Polymer linkage issues [i](#)

There are no chain breaks in this entry.

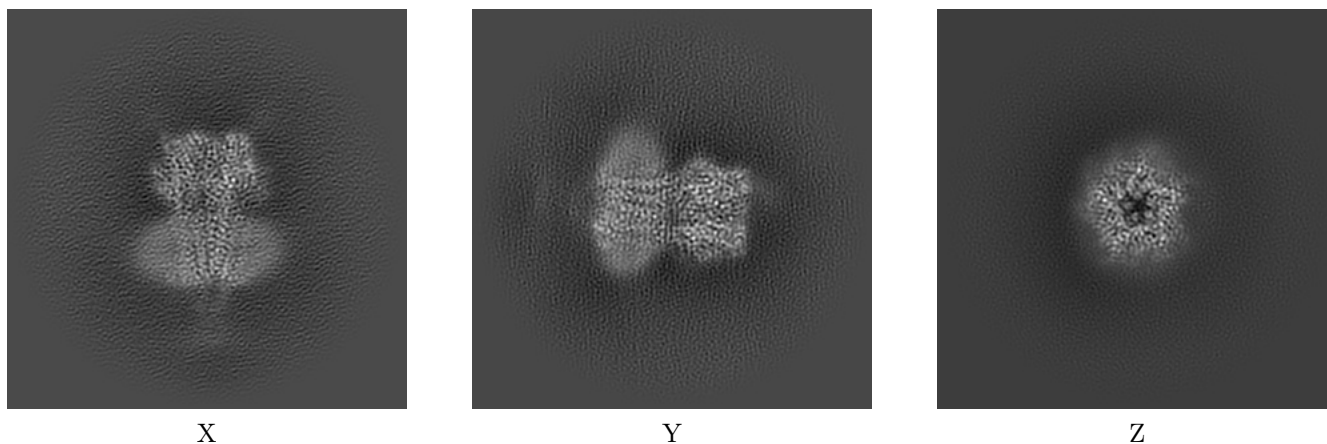
## 6 Map visualisation [i](#)

This section contains visualisations of the EMDB entry EMD-14048. These allow visual inspection of the internal detail of the map and identification of artifacts.

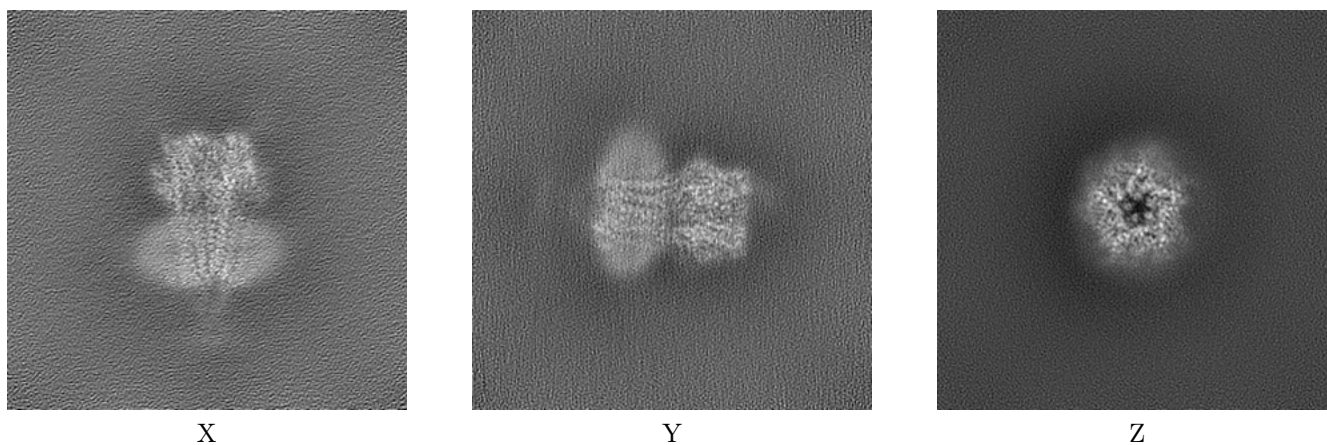
Images derived from a raw map, generated by summing the deposited half-maps, are presented below the corresponding image components of the primary map to allow further visual inspection and comparison with those of the primary map.

### 6.1 Orthogonal projections [i](#)

#### 6.1.1 Primary map



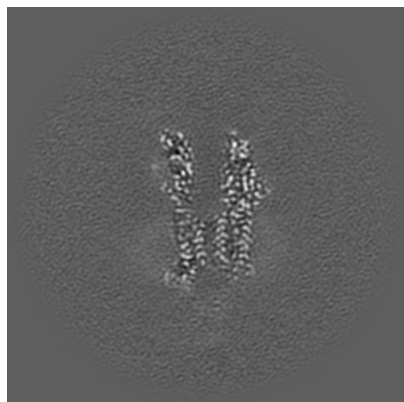
#### 6.1.2 Raw map



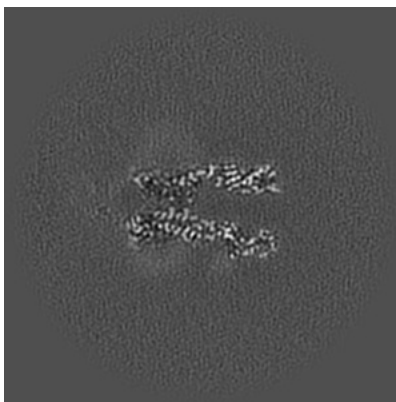
The images above show the map projected in three orthogonal directions.

## 6.2 Central slices [i](#)

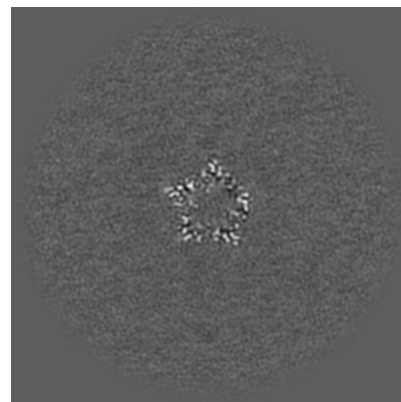
### 6.2.1 Primary map



X Index: 128

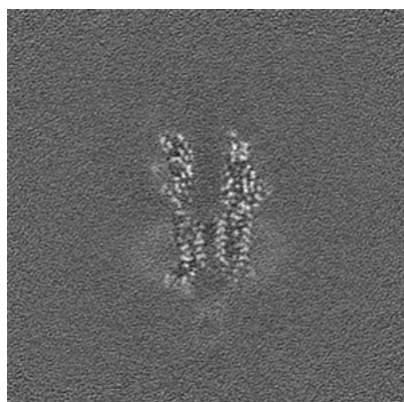


Y Index: 128

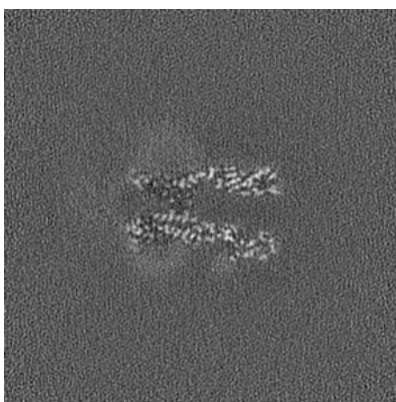


Z Index: 128

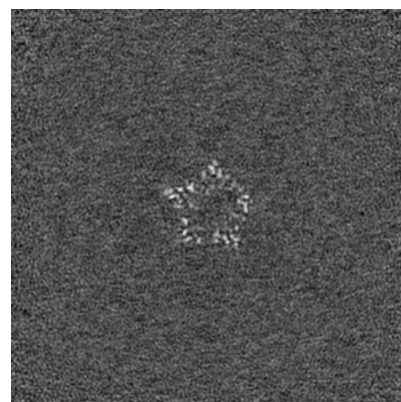
### 6.2.2 Raw map



X Index: 128



Y Index: 128



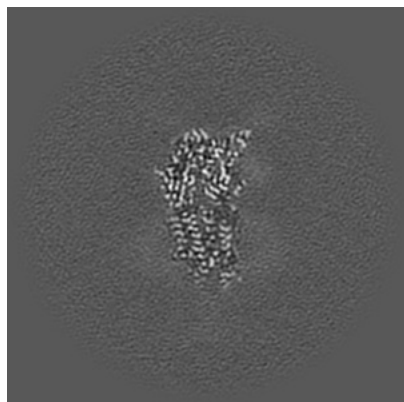
Z Index: 128

The images above show central slices of the map in three orthogonal directions.

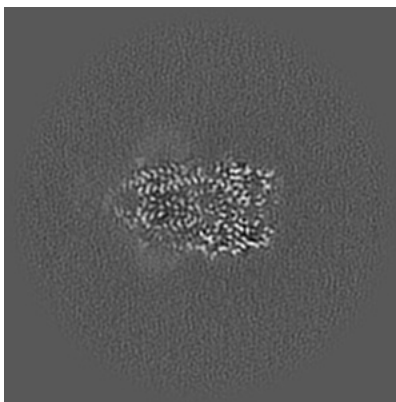


## 6.3 Largest variance slices [i](#)

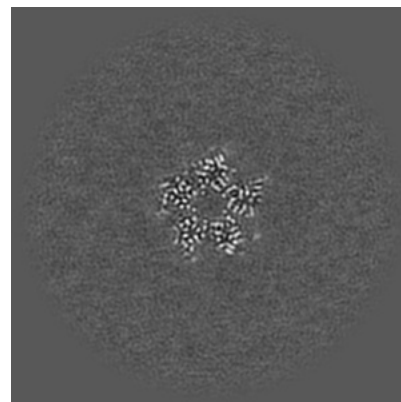
### 6.3.1 Primary map



X Index: 142

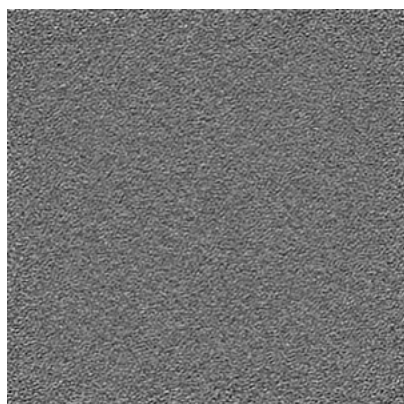


Y Index: 139

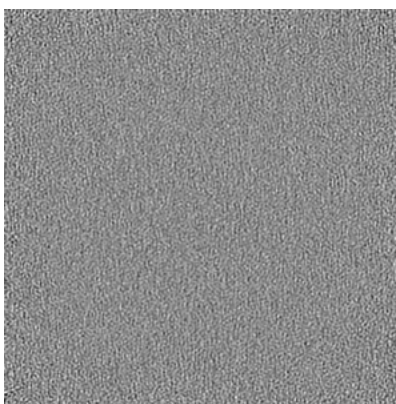


Z Index: 144

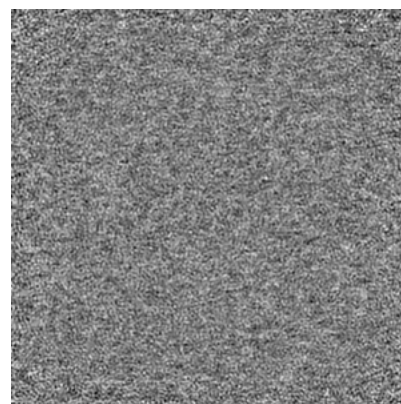
### 6.3.2 Raw map



X Index: 0



Y Index: 0



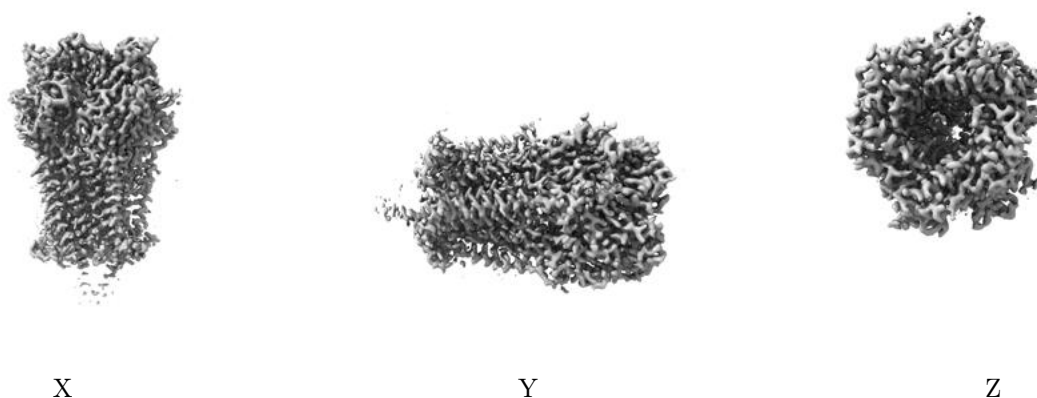
Z Index: 0

The images above show the largest variance slices of the map in three orthogonal directions.



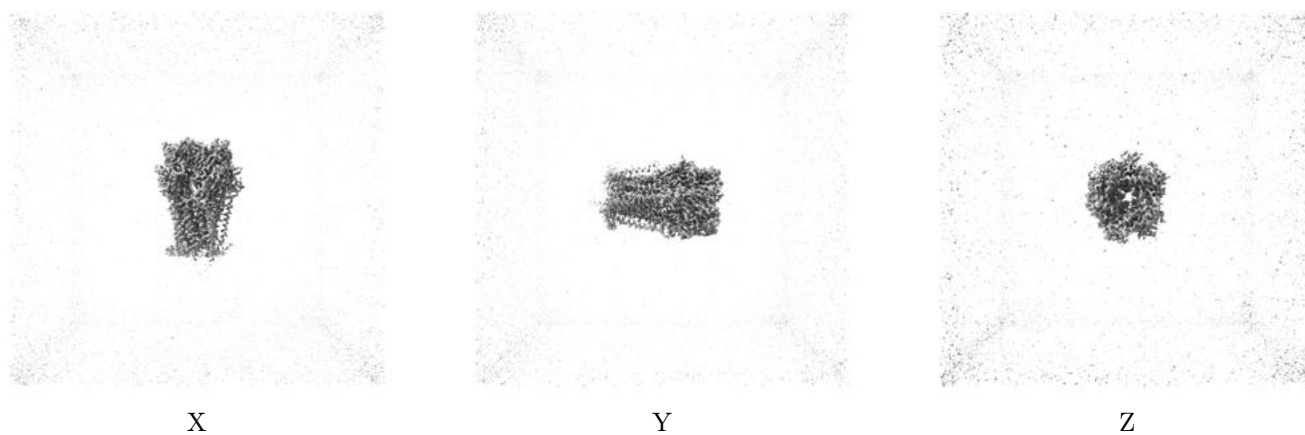
## 6.4 Orthogonal surface views [i](#)

### 6.4.1 Primary map



The images above show the 3D surface view of the map at the recommended contour level 0.324. These images, in conjunction with the slice images, may facilitate assessment of whether an appropriate contour level has been provided.

### 6.4.2 Raw map



These images show the 3D surface of the raw map. The raw map's contour level was selected so that its surface encloses the same volume as the primary map does at its recommended contour level.

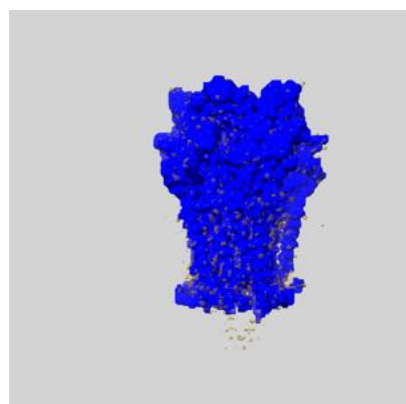
## 6.5 Mask visualisation [i](#)

This section shows the 3D surface view of the primary map at 50% transparency overlaid with the specified mask at 0% transparency

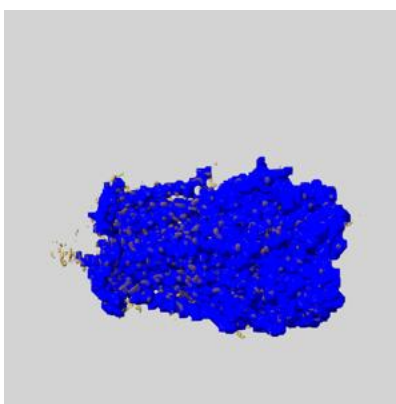
A mask typically either:

- Encompasses the whole structure
- Separates out a domain, a functional unit, a monomer or an area of interest from a larger structure

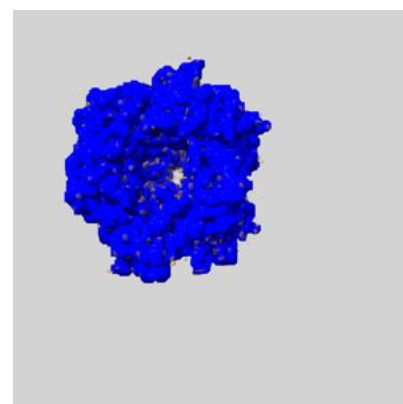
### 6.5.1 emd\_14048\_msk\_2.map [i](#)



X

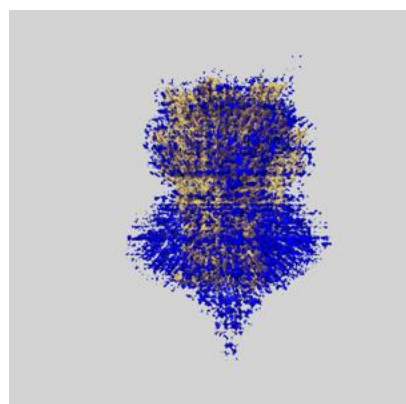


Y

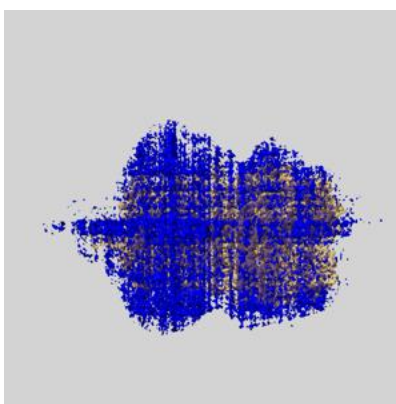


Z

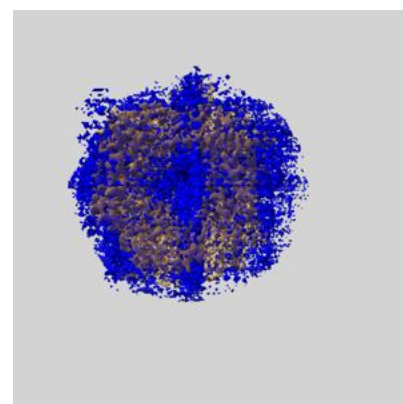
### 6.5.2 emd\_14048\_msk\_1.map [i](#)



X



Y

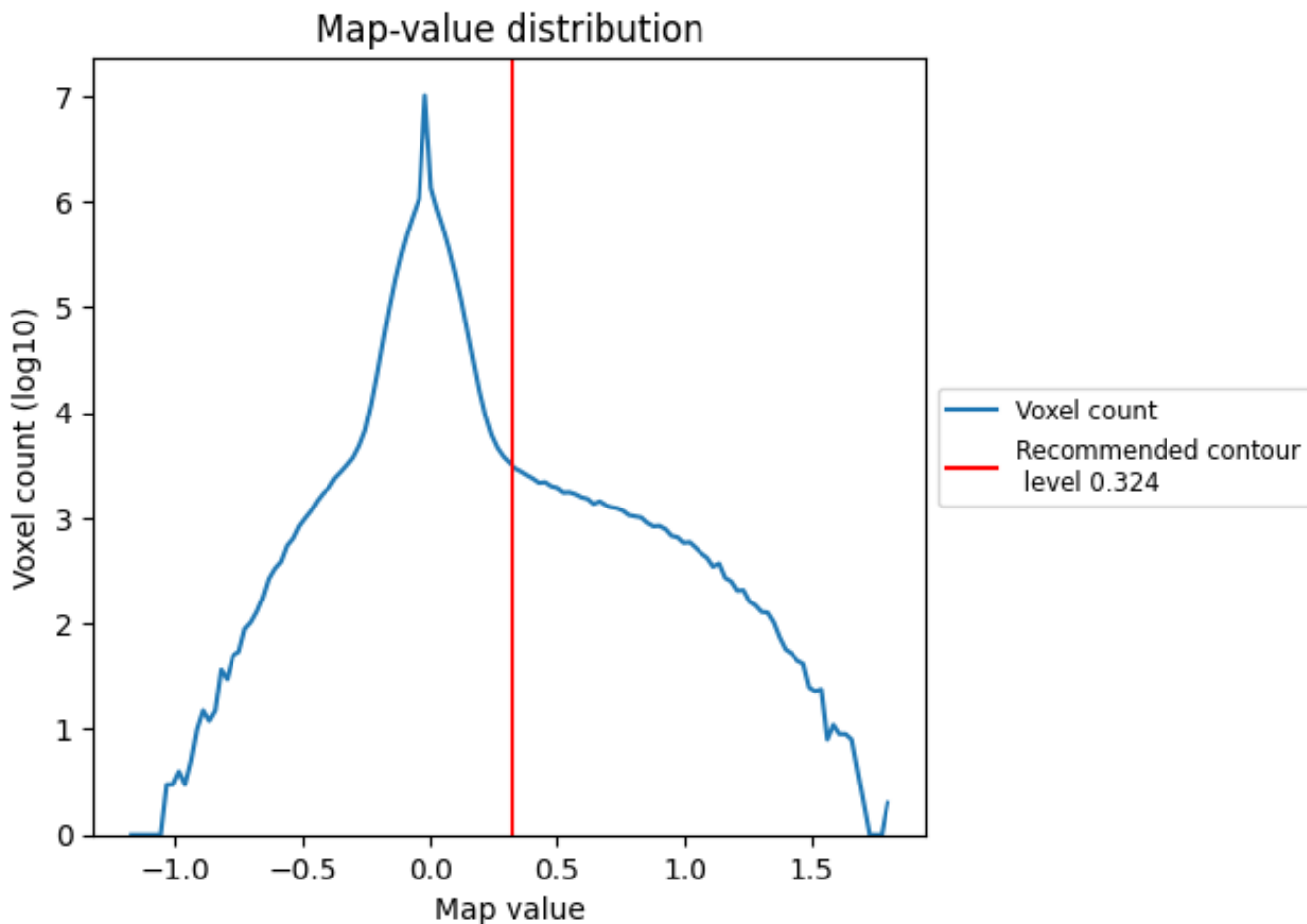


Z

## 7 Map analysis [i](#)

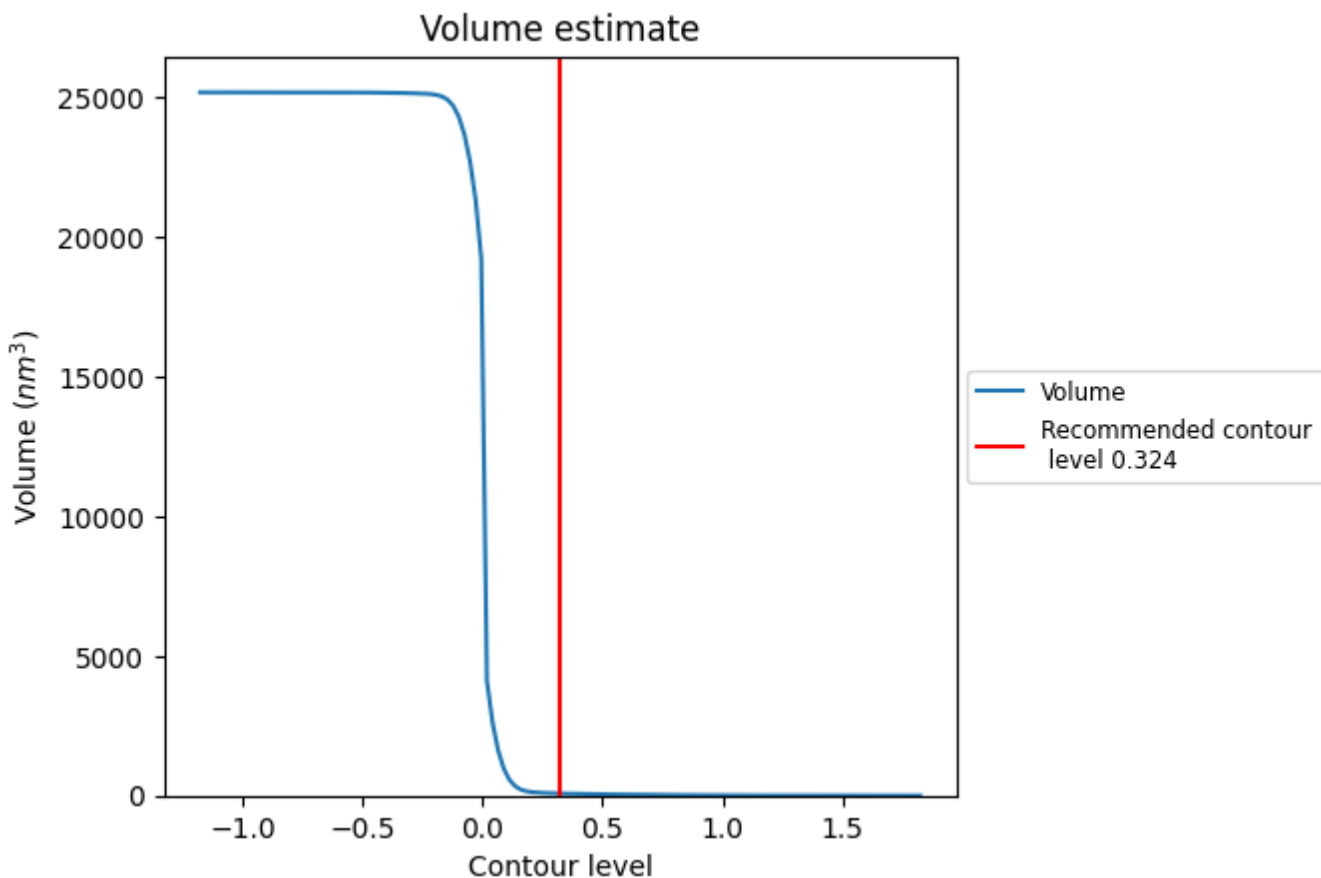
This section contains the results of statistical analysis of the map.

### 7.1 Map-value distribution [i](#)



The map-value distribution is plotted in 128 intervals along the x-axis. The y-axis is logarithmic. A spike in this graph at zero usually indicates that the volume has been masked.

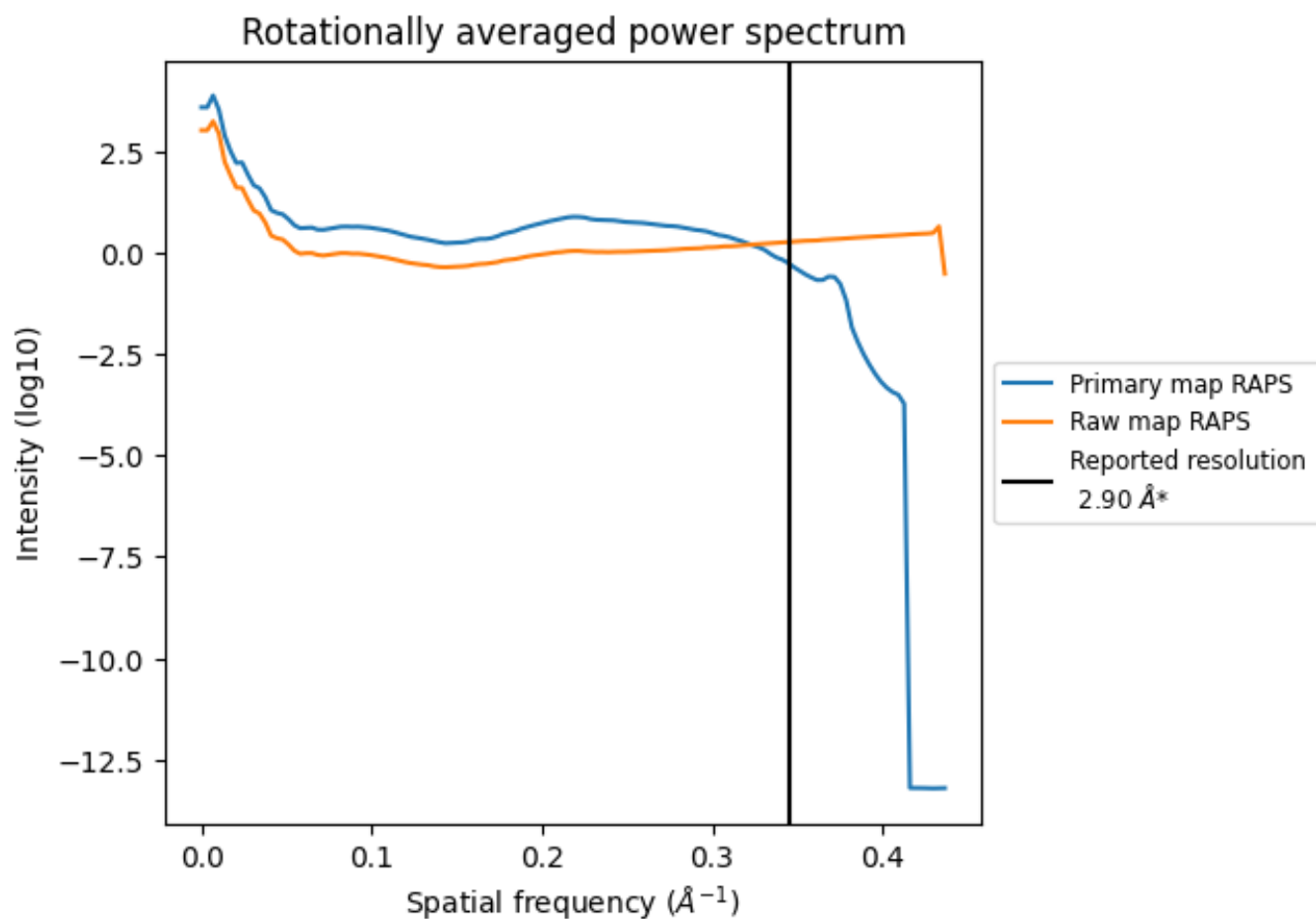
## 7.2 Volume estimate [i](#)



The volume at the recommended contour level is  $75 \text{ nm}^3$ ; this corresponds to an approximate mass of 68 kDa.

The volume estimate graph shows how the enclosed volume varies with the contour level. The recommended contour level is shown as a vertical line and the intersection between the line and the curve gives the volume of the enclosed surface at the given level.

### 7.3 Rotationally averaged power spectrum i

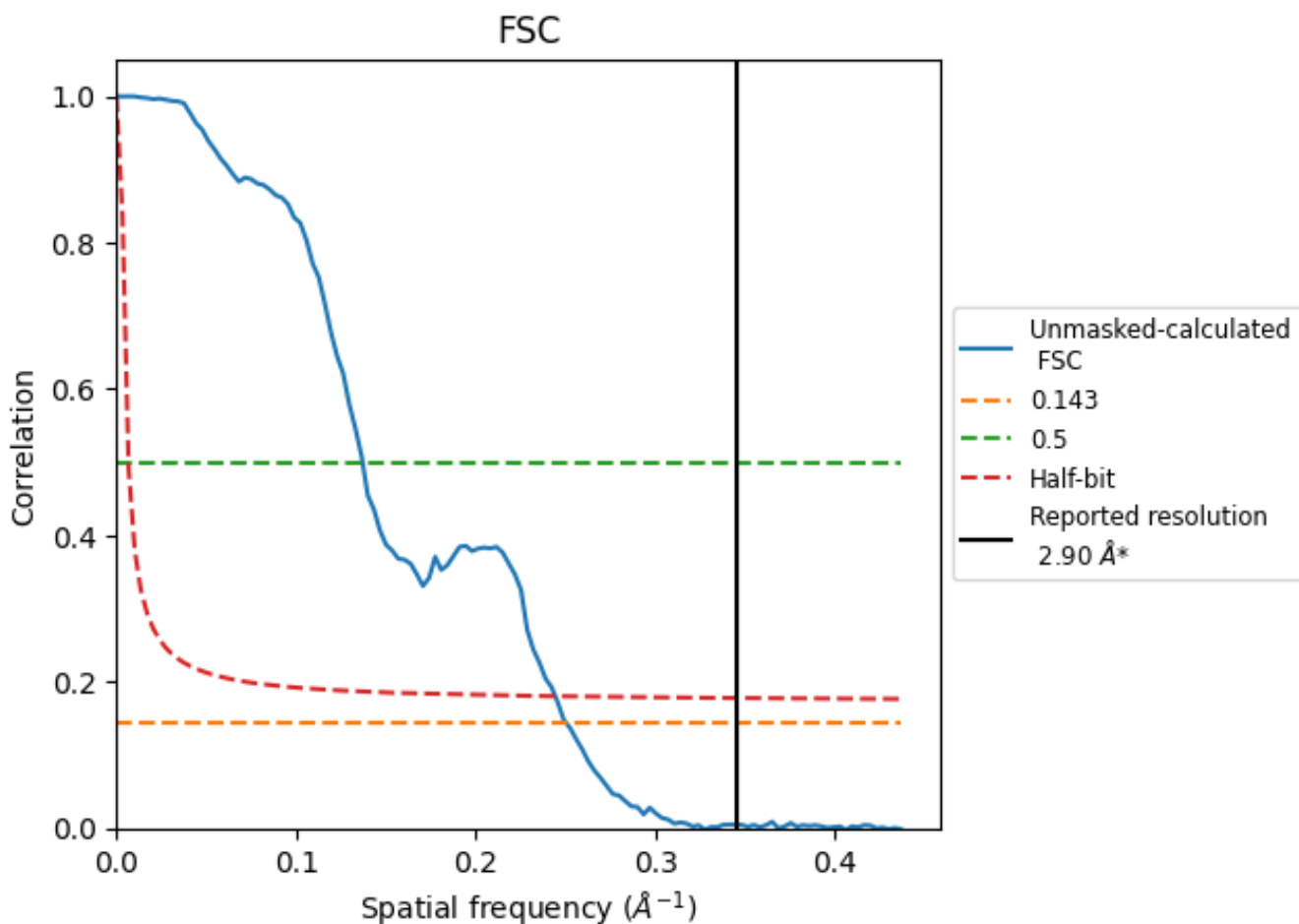


\*Reported resolution corresponds to spatial frequency of 0.345 Å<sup>-1</sup>

## 8 Fourier-Shell correlation [i](#)

Fourier-Shell Correlation (FSC) is the most commonly used method to estimate the resolution of single-particle and subtomogram-averaged maps. The shape of the curve depends on the imposed symmetry, mask and whether or not the two 3D reconstructions used were processed from a common reference. The reported resolution is shown as a black line. A curve is displayed for the half-bit criterion in addition to lines showing the 0.143 gold standard cut-off and 0.5 cut-off.

### 8.1 FSC [i](#)



\*Reported resolution corresponds to spatial frequency of 0.345 Å<sup>-1</sup>

## 8.2 Resolution estimates [i](#)

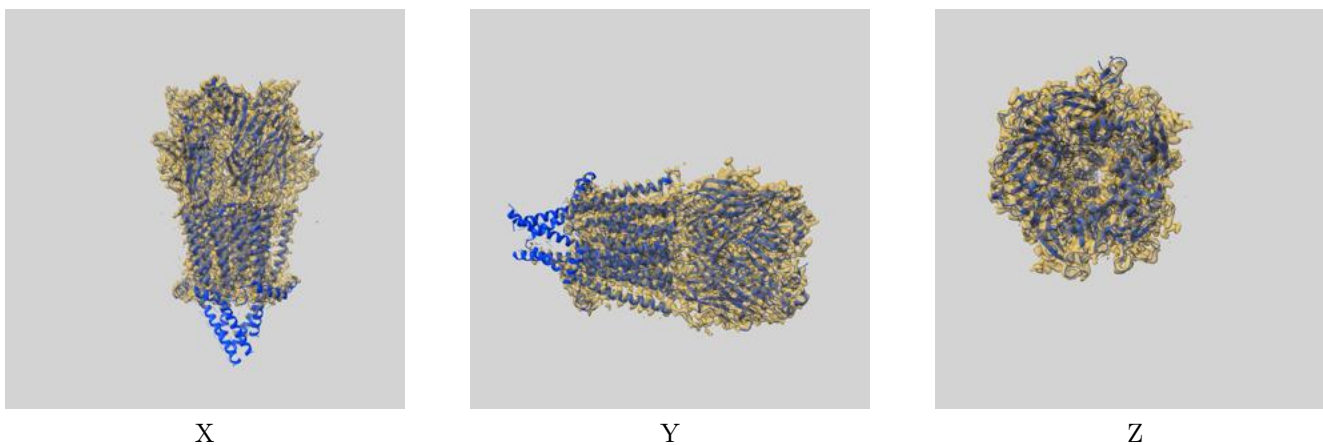
Resolution estimate (Å)	Estimation criterion (FSC cut-off)		
	0.143	0.5	Half-bit
Reported by author	2.90	-	-
Author-provided FSC curve	-	-	-
Unmasked-calculated*	3.99	7.30	4.09

\*Resolution estimate based on FSC curve calculated by comparison of deposited half-maps. The value from deposited half-maps intersecting FSC 0.143 CUT-OFF 3.99 differs from the reported value 2.9 by more than 10 %

## 9 Map-model fit [i](#)

This section contains information regarding the fit between EMDB map EMD-14048 and PDB model 7QKO. Per-residue inclusion information can be found in section [3](#) on page [7](#).

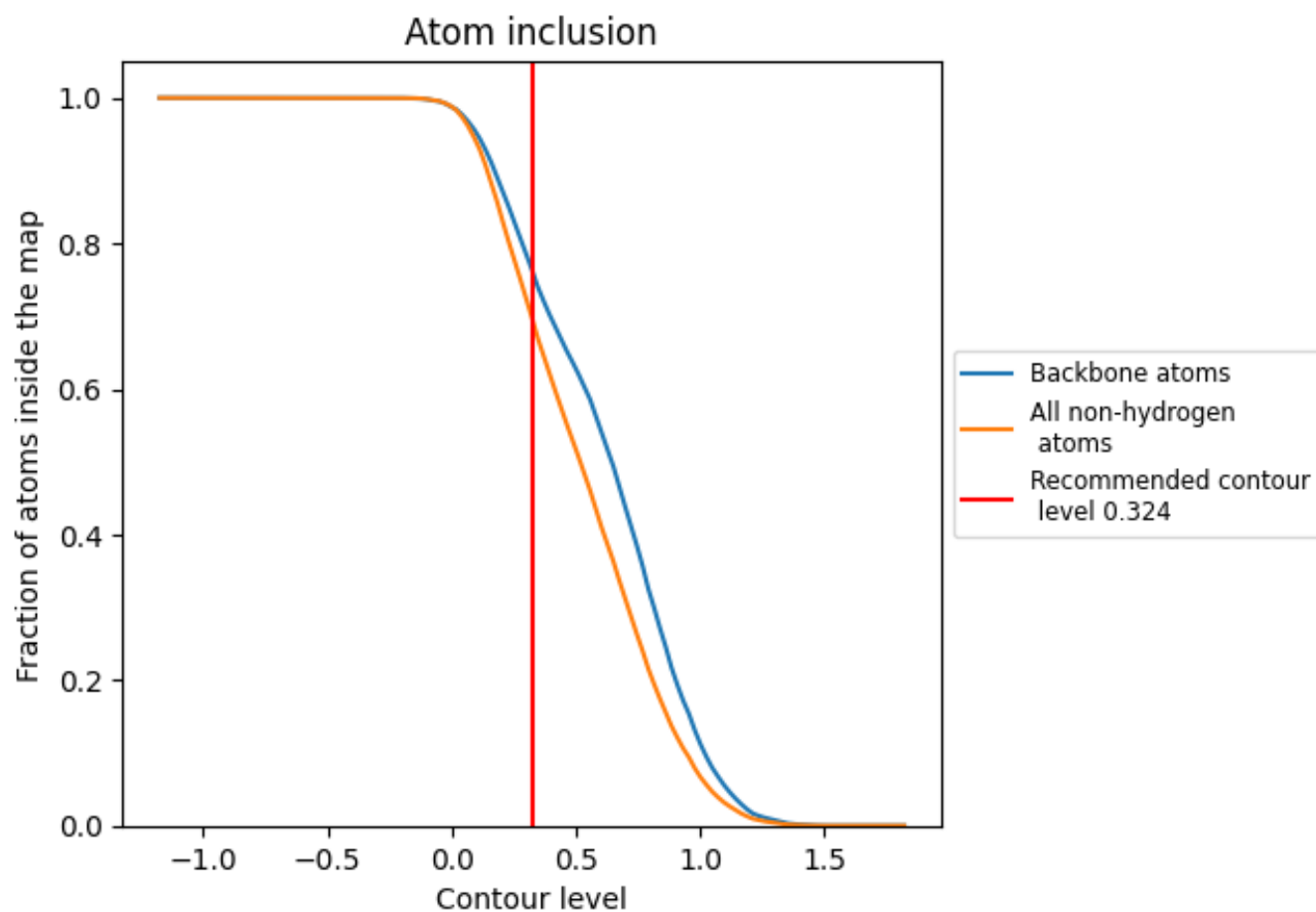
### 9.1 Map-model overlay [i](#)



The images above show the 3D surface view of the map at the recommended contour level 0.324 at 50% transparency in yellow overlaid with a ribbon representation of the model coloured in blue. These images allow for the visual assessment of the quality of fit between the atomic model and the map.



## 9.2 Atom inclusion [i](#)



At the recommended contour level, 76% of all backbone atoms, 70% of all non-hydrogen atoms, are inside the map.