



Full wwPDB X-ray Structure Validation Report ⓘ

Feb 28, 2024 – 12:57 AM EST

PDB ID : 5QK7
Title : PanDDA analysis group deposition of models with modelled events (e.g. bound ligands) – Crystal Structure of NUDT5 in complex with Z1918536193
Authors : Dubianok, Y.; Collins, P.; Krojer, T.; Wright, N.; Strain-Damerell, C.; Burgess-Brown, N.; Bountra, C.; Arrowsmith, C.H.; Edwards, A.; Huber, K.; von Delft, F.
Deposited on : 2018-10-31
Resolution : 1.66 Å(reported)

This is a Full wwPDB X-ray Structure Validation Report for a publicly released PDB entry.

We welcome your comments at validation@mail.wwpdb.org

A user guide is available at

<https://www.wwpdb.org/validation/2017/XrayValidationReportHelp>

with specific help available everywhere you see the ⓘ symbol.

The types of validation reports are described at

<http://www.wwpdb.org/validation/2017/FAQs#types>.

The following versions of software and data (see [references ⓘ](#)) were used in the production of this report:

MolProbity : 4.02b-467
Mogul : 1.8.5 (274361), CSD as541be (2020)
Xtriage (Phenix) : 1.13
EDS : 2.36
Percentile statistics : 20191225.v01 (using entries in the PDB archive December 25th 2019)
Refmac : 5.8.0158
CCP4 : 7.0.044 (Gargrove)
Ideal geometry (proteins) : Engh & Huber (2001)
Ideal geometry (DNA, RNA) : Parkinson et al. (1996)
Validation Pipeline (wwPDB-VP) : 2.36

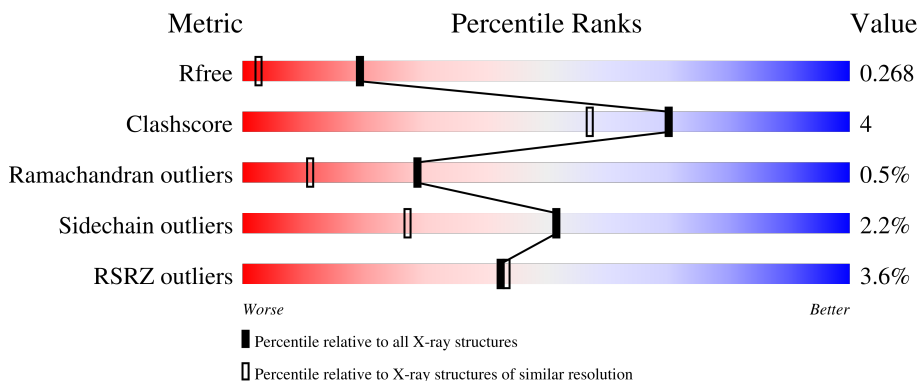
1 Overall quality at a glance i

The following experimental techniques were used to determine the structure:

X-RAY DIFFRACTION

The reported resolution of this entry is 1.66 Å.

Percentile scores (ranging between 0-100) for global validation metrics of the entry are shown in the following graphic. The table shows the number of entries on which the scores are based.



Metric	Whole archive (#Entries)	Similar resolution (#Entries, resolution range(Å))
R_{free}	130704	1827 (1.66-1.66)
Clashscore	141614	1931 (1.66-1.66)
Ramachandran outliers	138981	1891 (1.66-1.66)
Sidechain outliers	138945	1891 (1.66-1.66)
RSRZ outliers	127900	1791 (1.66-1.66)

The table below summarises the geometric issues observed across the polymeric chains and their fit to the electron density. The red, orange, yellow and green segments of the lower bar indicate the fraction of residues that contain outliers for ≥ 3 , 2, 1 and 0 types of geometric quality criteria respectively. A grey segment represents the fraction of residues that are not modelled. The numeric value for each fraction is indicated below the corresponding segment, with a dot representing fractions $\leq 5\%$. The upper red bar (where present) indicates the fraction of residues that have poor fit to the electron density. The numeric value is given above the bar.

Mol	Chain	Length	Quality of chain
1	A	209	 4% 86% 7% 7%
1	B	209	 3% 85% 8% 7%
1	C	209	 % 83% 8% • 8%
1	D	209	 4% 81% 9% • 9%

2 Entry composition [i](#)

There are 6 unique types of molecules in this entry. The entry contains 6095 atoms, of which 0 are hydrogens and 0 are deuteriums.

In the tables below, the ZeroOcc column contains the number of atoms modelled with zero occupancy, the AltConf column contains the number of residues with at least one atom in alternate conformation and the Trace column contains the number of residues modelled with at most 2 atoms.

- Molecule 1 is a protein called ADP-sugar pyrophosphatase.

Mol	Chain	Residues	Atoms					ZeroOcc	AltConf	Trace
			Total	C	N	O	S			
1	A	194	1454	920	243	283	8	0	0	0
1	B	194	1464	924	244	288	8	0	0	0
1	C	192	1412	890	235	280	7	0	0	0
1	D	190	1435	909	241	277	8	0	1	0

There are 4 discrepancies between the modelled and reference sequences:

Chain	Residue	Modelled	Actual	Comment	Reference
A	0	SER	-	expression tag	UNP Q9UKK9
B	0	SER	-	expression tag	UNP Q9UKK9
C	0	SER	-	expression tag	UNP Q9UKK9
D	0	SER	-	expression tag	UNP Q9UKK9

- Molecule 2 is MAGNESIUM ION (three-letter code: MG) (formula: Mg).

Mol	Chain	Residues	Atoms		ZeroOcc	AltConf
2	A	2	Total 2	Mg 2	0	0
2	B	2	Total 2	Mg 2	0	0
2	C	2	Total 2	Mg 2	0	0
2	D	2	Total 2	Mg 2	0	0

- Molecule 3 is CHLORIDE ION (three-letter code: CL) (formula: Cl).

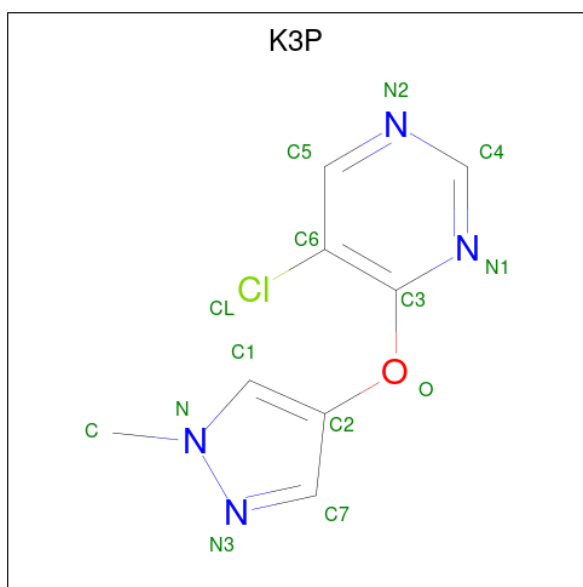
Mol	Chain	Residues	Atoms	ZeroOcc	AltConf
3	A	1	Total Cl 1 1	0	0

- Molecule 4 is 1,2-ETHANEDIOL (three-letter code: EDO) (formula: C₂H₆O₂).



Mol	Chain	Residues	Atoms	ZeroOcc	AltConf
4	A	1	Total C O 4 2 2	0	0
4	B	1	Total C O 4 2 2	0	0
4	C	1	Total C O 4 2 2	0	0
4	C	1	Total C O 4 2 2	0	0

- Molecule 5 is 5-chloro-4-[(1-methyl-1H-pyrazol-4-yl)oxy]pyrimidine (three-letter code: K3P) (formula: C₈H₇ClN₄O).



Mol	Chain	Residues	Atoms				ZeroOcc	AltConf	
5	B	1	Total	C	Cl	N	O	0	0
			14	8	1	4	1		
5	B	1	Total	C	Cl	N	O	0	0
			14	8	1	4	1		
5	C	1	Total	C	Cl	N	O	0	0
			14	8	1	4	1		
5	C	1	Total	C	Cl	N	O	0	0
			14	8	1	4	1		

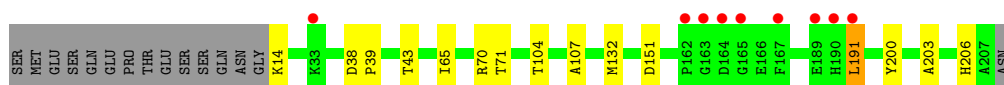
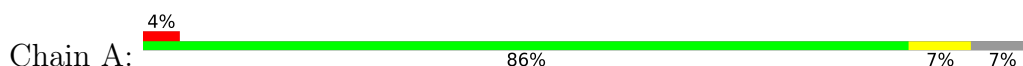
- Molecule 6 is water.

Mol	Chain	Residues	Atoms		ZeroOcc	AltConf
6	A	68	Total	O	0	0
			68	68		
6	B	76	Total	O	0	0
			76	76		
6	C	71	Total	O	0	0
			71	71		
6	D	34	Total	O	0	0
			34	34		

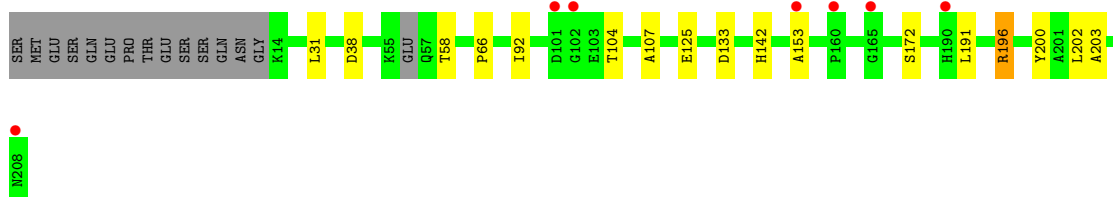
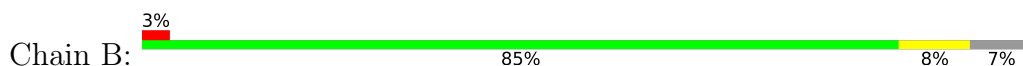
3 Residue-property plots [i](#)

These plots are drawn for all protein, RNA, DNA and oligosaccharide chains in the entry. The first graphic for a chain summarises the proportions of the various outlier classes displayed in the second graphic. The second graphic shows the sequence view annotated by issues in geometry and electron density. Residues are color-coded according to the number of geometric quality criteria for which they contain at least one outlier: green = 0, yellow = 1, orange = 2 and red = 3 or more. A red dot above a residue indicates a poor fit to the electron density ($RSRZ > 2$). Stretches of 2 or more consecutive residues without any outlier are shown as a green connector. Residues present in the sample, but not in the model, are shown in grey.

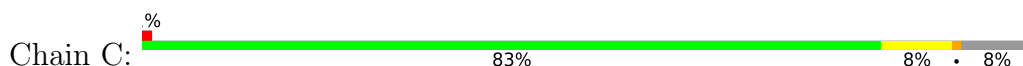
- Molecule 1: ADP-sugar pyrophosphatase



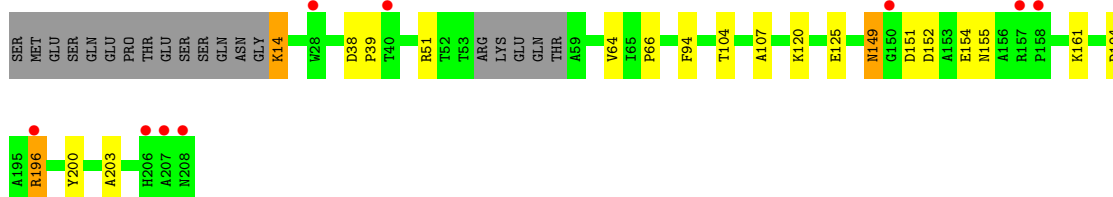
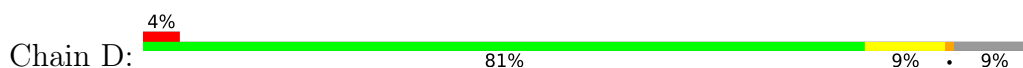
- Molecule 1: ADP-sugar pyrophosphatase



- Molecule 1: ADP-sugar pyrophosphatase



- Molecule 1: ADP-sugar pyrophosphatase



4 Data and refinement statistics

Property	Value	Source
Space group	P 1	Depositor
Cell constants a, b, c, α , β , γ	48.58Å 59.46Å 80.40Å 79.39° 82.31° 76.19°	Depositor
Resolution (Å)	78.68 – 1.66 46.96 – 1.66	Depositor EDS
% Data completeness (in resolution range)	87.7 (78.68-1.66) 87.7 (46.96-1.66)	Depositor EDS
R_{merge}	0.04	Depositor
R_{sym}	(Not available)	Depositor
$\langle I/\sigma(I) \rangle$ ¹	1.26 (at 1.66Å)	Xtrriage
Refinement program	REFMAC 5.8.0189	Depositor
R, R_{free}	0.217 , 0.255 0.232 , 0.268	Depositor DCC
R_{free} test set	4470 reflections (5.08%)	wwPDB-VP
Wilson B-factor (Å ²)	28.6	Xtrriage
Anisotropy	0.262	Xtrriage
Bulk solvent k_{sol} (e/Å ³), B_{sol} (Å ²)	0.32 , 39.6	EDS
L-test for twinning ²	$\langle L \rangle = 0.49$, $\langle L^2 \rangle = 0.32$	Xtrriage
Estimated twinning fraction	No twinning to report.	Xtrriage
F_o, F_c correlation	0.96	EDS
Total number of atoms	6095	wwPDB-VP
Average B, all atoms (Å ²)	40.0	wwPDB-VP

Xtrriage's analysis on translational NCS is as follows: *The largest off-origin peak in the Patterson function is 6.16% of the height of the origin peak. No significant pseudotranslation is detected.*

¹Intensities estimated from amplitudes.

²Theoretical values of $\langle |L| \rangle$, $\langle L^2 \rangle$ for acentric reflections are 0.5, 0.333 respectively for untwinned datasets, and 0.375, 0.2 for perfectly twinned datasets.

5 Model quality [i](#)

5.1 Standard geometry [i](#)

Bond lengths and bond angles in the following residue types are not validated in this section: MG, EDO, K3P, CL

The Z score for a bond length (or angle) is the number of standard deviations the observed value is removed from the expected value. A bond length (or angle) with $|Z| > 5$ is considered an outlier worth inspection. RMSZ is the root-mean-square of all Z scores of the bond lengths (or angles).

Mol	Chain	Bond lengths		Bond angles	
		RMSZ	# $ Z > 5$	RMSZ	# $ Z > 5$
1	A	0.91	0/1482	0.91	1/2023 (0.0%)
1	B	0.84	0/1492	0.92	2/2035 (0.1%)
1	C	0.84	0/1439	0.90	2/1970 (0.1%)
1	D	0.82	0/1463	0.94	6/1996 (0.3%)
All	All	0.85	0/5876	0.92	11/8024 (0.1%)

There are no bond length outliers.

All (11) bond angle outliers are listed below:

Mol	Chain	Res	Type	Atoms	Z	Observed(°)	Ideal(°)
1	D	196[A]	ARG	NE-CZ-NH2	-8.20	116.20	120.30
1	D	196[B]	ARG	NE-CZ-NH2	-8.20	116.20	120.30
1	C	196	ARG	NE-CZ-NH1	7.80	124.20	120.30
1	D	196[A]	ARG	NE-CZ-NH1	7.79	124.20	120.30
1	D	196[B]	ARG	NE-CZ-NH1	7.79	124.20	120.30
1	B	196	ARG	NE-CZ-NH1	7.12	123.86	120.30
1	C	136	LEU	CA-CB-CG	5.58	128.13	115.30
1	B	133	ASP	CB-CG-OD1	5.51	123.26	118.30
1	D	51	ARG	NE-CZ-NH1	5.22	122.91	120.30
1	A	70	ARG	NE-CZ-NH2	-5.15	117.72	120.30
1	D	51	ARG	NE-CZ-NH2	-5.04	117.78	120.30

There are no chirality outliers.

There are no planarity outliers.

5.2 Too-close contacts [i](#)

In the following table, the Non-H and H(model) columns list the number of non-hydrogen atoms and hydrogen atoms in the chain respectively. The H(added) column lists the number of hydrogen

atoms added and optimized by MolProbity. The Clashes column lists the number of clashes within the asymmetric unit, whereas Symm-Clashes lists symmetry-related clashes.

Mol	Chain	Non-H	H(model)	H(added)	Clashes	Symm-Clashes
1	A	1454	0	1416	14	0
1	B	1464	0	1414	12	0
1	C	1412	0	1318	11	0
1	D	1435	0	1395	16	0
2	A	2	0	0	0	0
2	B	2	0	0	0	0
2	C	2	0	0	0	0
2	D	2	0	0	0	0
3	A	1	0	0	0	0
4	A	4	0	6	0	0
4	B	4	0	6	1	0
4	C	8	0	12	1	0
5	B	28	0	0	0	0
5	C	28	0	0	0	0
6	A	68	0	0	0	0
6	B	76	0	0	2	0
6	C	71	0	0	1	0
6	D	34	0	0	0	0
All	All	6095	0	5567	41	0

The all-atom clashscore is defined as the number of clashes found per 1000 atoms (including hydrogen atoms). The all-atom clashscore for this structure is 4.

All (41) close contacts within the same asymmetric unit are listed below, sorted by their clash magnitude.

Atom-1	Atom-2	Interatomic distance (Å)	Clash overlap (Å)
1:A:191:LEU:C	1:A:191:LEU:HD23	1.85	0.98
1:A:191:LEU:HD23	1:A:191:LEU:O	1.64	0.95
1:C:125:GLU:OE1	6:C:401:HOH:O	1.95	0.83
1:C:203:ALA:HB3	1:D:203:ALA:HB3	1.68	0.75
1:D:120:LYS:H	1:D:155:ASN:HD21	1.36	0.72
1:A:191:LEU:C	1:A:191:LEU:CD2	2.58	0.70
1:B:153:ALA:HB1	6:B:464:HOH:O	1.97	0.65
1:A:191:LEU:O	1:A:191:LEU:CD2	2.42	0.65
1:C:206:HIS:HE1	1:D:125:GLU:OE1	1.80	0.64
1:D:104:THR:HG23	1:D:107:ALA:H	1.65	0.62
1:A:203:ALA:HB3	1:B:203:ALA:HB3	1.83	0.60
1:C:179:LEU:HD11	1:C:198:TYR:CZ	2.39	0.57
1:A:206:HIS:HD2	1:B:200:TYR:OH	1.88	0.56

Continued on next page...

Continued from previous page...

Atom-1	Atom-2	Interatomic distance (Å)	Clash overlap (Å)
1:A:104:THR:HG23	1:A:107:ALA:H	1.71	0.56
1:B:58:THR:CB	1:B:142:HIS:NE2	2.69	0.56
1:A:71:THR:HG23	1:A:151:ASP:OD2	2.07	0.55
1:D:194:ASP:OD1	1:D:196[A]:ARG:HD3	2.06	0.55
1:C:104:THR:HG23	1:C:107:ALA:H	1.70	0.55
1:A:206:HIS:HE1	1:B:125:GLU:OE1	1.90	0.55
1:C:160:PRO:O	1:C:162:PRO:HD3	2.09	0.52
1:D:14:LYS:HG2	1:D:39:PRO:HB3	1.92	0.52
1:B:92:ILE:HD11	1:B:191:LEU:CD1	2.40	0.51
1:D:149:ASN:HD22	1:D:151:ASP:H	1.59	0.51
1:A:200:TYR:CD1	1:B:203:ALA:HB2	2.46	0.50
1:C:132:MET:O	1:D:196[B]:ARG:NH1	2.46	0.49
1:C:200:TYR:CD1	1:D:203:ALA:HB2	2.49	0.48
1:A:132:MET:O	1:B:196:ARG:NH2	2.45	0.48
1:A:203:ALA:HB2	1:B:200:TYR:CD1	2.49	0.48
1:D:149:ASN:HD22	1:D:149:ASN:C	2.15	0.48
1:B:104:THR:HG23	1:B:107:ALA:H	1.79	0.47
1:C:149:ASN:HD22	4:C:301:EDO:H11	1.80	0.46
1:B:92:ILE:HD11	1:B:191:LEU:HD13	1.97	0.46
1:C:206:HIS:CE1	1:D:125:GLU:OE1	2.65	0.46
1:D:149:ASN:HD21	1:D:151:ASP:HB2	1.82	0.45
1:D:64:VAL:O	1:D:94:PHE:HB3	2.17	0.44
1:D:152:ASP:OD2	1:D:154:GLU:HG2	2.19	0.43
1:A:14:LYS:HG2	1:A:39:PRO:CB	2.50	0.41
4:B:301:EDO:C2	6:B:411:HOH:O	2.67	0.41
1:A:65:ILE:HD12	1:B:202:LEU:HD13	2.02	0.41
1:C:206:HIS:HD2	1:D:200:TYR:OH	2.04	0.41
1:D:38:ASP:HB2	1:D:39:PRO:CD	2.51	0.41

There are no symmetry-related clashes.

5.3 Torsion angles [i](#)

5.3.1 Protein backbone [i](#)

In the following table, the Percentiles column shows the percent Ramachandran outliers of the chain as a percentile score with respect to all X-ray entries followed by that with respect to entries of similar resolution.

The Analysed column shows the number of residues for which the backbone conformation was analysed, and the total number of residues.

Mol	Chain	Analysed	Favoured	Allowed	Outliers	Percentiles	
1	A	192/209 (92%)	186 (97%)	6 (3%)	0	100	100
1	B	190/209 (91%)	185 (97%)	4 (2%)	1 (0%)	29	11
1	C	188/209 (90%)	182 (97%)	3 (2%)	3 (2%)	9	1
1	D	187/209 (90%)	181 (97%)	6 (3%)	0	100	100
All	All	757/836 (91%)	734 (97%)	19 (2%)	4 (0%)	29	11

All (4) Ramachandran outliers are listed below:

Mol	Chain	Res	Type
1	C	161	LYS
1	C	66	PRO
1	B	66	PRO
1	C	160	PRO

5.3.2 Protein sidechains [i](#)

In the following table, the Percentiles column shows the percent sidechain outliers of the chain as a percentile score with respect to all X-ray entries followed by that with respect to entries of similar resolution.

The Analysed column shows the number of residues for which the sidechain conformation was analysed, and the total number of residues.

Mol	Chain	Analysed	Rotameric	Outliers	Percentiles	
1	A	152/179 (85%)	149 (98%)	3 (2%)	55	32
1	B	154/179 (86%)	151 (98%)	3 (2%)	57	34
1	C	142/179 (79%)	139 (98%)	3 (2%)	53	29
1	D	150/179 (84%)	146 (97%)	4 (3%)	44	19
All	All	598/716 (84%)	585 (98%)	13 (2%)	52	27

All (13) residues with a non-rotameric sidechain are listed below:

Mol	Chain	Res	Type
1	A	38	ASP
1	A	43	THR
1	A	191	LEU
1	B	31	LEU
1	B	38	ASP
1	B	172	SER
1	C	22	LEU

Continued on next page...

Continued from previous page...

Mol	Chain	Res	Type
1	C	136	LEU
1	C	189	GLU
1	D	14	LYS
1	D	66	PRO
1	D	149	ASN
1	D	161	LYS

Sometimes sidechains can be flipped to improve hydrogen bonding and reduce clashes. All (9) such sidechains are listed below:

Mol	Chain	Res	Type
1	A	73	HIS
1	A	206	HIS
1	B	206	HIS
1	C	149	ASN
1	C	206	HIS
1	D	69	GLN
1	D	149	ASN
1	D	155	ASN
1	D	206	HIS

5.3.3 RNA [i](#)

There are no RNA molecules in this entry.

5.4 Non-standard residues in protein, DNA, RNA chains [i](#)

There are no non-standard protein/DNA/RNA residues in this entry.

5.5 Carbohydrates [i](#)

There are no monosaccharides in this entry.

5.6 Ligand geometry [i](#)

Of 17 ligands modelled in this entry, 9 are monoatomic - leaving 8 for Mogul analysis.

In the following table, the Counts columns list the number of bonds (or angles) for which Mogul statistics could be retrieved, the number of bonds (or angles) that are observed in the model and the number of bonds (or angles) that are defined in the Chemical Component Dictionary. The

Link column lists molecule types, if any, to which the group is linked. The Z score for a bond length (or angle) is the number of standard deviations the observed value is removed from the expected value. A bond length (or angle) with $|Z| > 2$ is considered an outlier worth inspection. RMSZ is the root-mean-square of all Z scores of the bond lengths (or angles).

Mol	Type	Chain	Res	Link	Bond lengths			Bond angles		
					Counts	RMSZ	# Z > 2	Counts	RMSZ	# Z > 2
4	EDO	B	301	-	3,3,3	0.63	0	2,2,2	0.65	0
4	EDO	C	306	-	3,3,3	0.44	0	2,2,2	0.54	0
5	K3P	B	304	-	12,15,15	2.09	3 (25%)	11,20,20	1.57	4 (36%)
5	K3P	C	305	-	12,15,15	2.42	4 (33%)	11,20,20	1.60	2 (18%)
4	EDO	C	301	-	3,3,3	0.45	0	2,2,2	0.30	0
5	K3P	C	304	-	12,15,15	1.99	3 (25%)	11,20,20	1.61	2 (18%)
5	K3P	B	305	-	12,15,15	2.04	3 (25%)	11,20,20	1.30	2 (18%)
4	EDO	A	304	-	3,3,3	0.58	0	2,2,2	0.55	0

In the following table, the Chirals column lists the number of chiral outliers, the number of chiral centers analysed, the number of these observed in the model and the number defined in the Chemical Component Dictionary. Similar counts are reported in the Torsion and Rings columns. '-' means no outliers of that kind were identified.

Mol	Type	Chain	Res	Link	Chirals	Torsions	Rings
4	EDO	B	301	-	-	0/1/1/1	-
4	EDO	C	306	-	-	0/1/1/1	-
5	K3P	B	304	-	-	0/2/4/4	0/2/2/2
5	K3P	C	305	-	-	0/2/4/4	0/2/2/2
4	EDO	C	301	-	-	1/1/1/1	-
5	K3P	C	304	-	-	0/2/4/4	0/2/2/2
5	K3P	B	305	-	-	0/2/4/4	0/2/2/2
4	EDO	A	304	-	-	0/1/1/1	-

All (13) bond length outliers are listed below:

Mol	Chain	Res	Type	Atoms	Z	Observed(Å)	Ideal(Å)
5	C	305	K3P	C1-N	5.79	1.41	1.35
5	B	304	K3P	C1-N	4.95	1.40	1.35
5	C	304	K3P	C1-N	4.91	1.40	1.35
5	B	305	K3P	C1-N	4.61	1.40	1.35
5	B	305	K3P	C3-N1	3.94	1.39	1.32
5	C	305	K3P	C3-N1	3.89	1.39	1.32
5	B	304	K3P	C3-N1	3.63	1.39	1.32
5	C	304	K3P	C3-N1	3.37	1.38	1.32
5	C	305	K3P	C6-CL	-2.79	1.67	1.73
5	C	305	K3P	C4-N2	2.72	1.38	1.33

Continued on next page...

Continued from previous page...

Mol	Chain	Res	Type	Atoms	Z	Observed(Å)	Ideal(Å)
5	B	305	K3P	C4-N2	2.41	1.38	1.33
5	B	304	K3P	C4-N2	2.32	1.38	1.33
5	C	304	K3P	C4-N2	2.26	1.38	1.33

All (10) bond angle outliers are listed below:

Mol	Chain	Res	Type	Atoms	Z	Observed(°)	Ideal(°)
5	C	304	K3P	O-C3-N1	-4.09	114.07	119.49
5	C	305	K3P	O-C3-N1	-3.32	115.08	119.49
5	B	304	K3P	C2-O-C3	2.74	123.59	118.16
5	B	304	K3P	C2-C1-N	-2.46	104.44	107.48
5	C	305	K3P	C2-C1-N	-2.45	104.45	107.48
5	C	304	K3P	C2-C1-N	-2.42	104.48	107.48
5	B	305	K3P	C2-C1-N	-2.19	104.77	107.48
5	B	304	K3P	O-C3-N1	-2.19	116.59	119.49
5	B	305	K3P	O-C3-N1	-2.18	116.59	119.49
5	B	304	K3P	C7-N3-N	2.08	106.40	104.23

There are no chirality outliers.

All (1) torsion outliers are listed below:

Mol	Chain	Res	Type	Atoms
4	C	301	EDO	O1-C1-C2-O2

There are no ring outliers.

2 monomers are involved in 2 short contacts:

Mol	Chain	Res	Type	Clashes	Symm-Clashes
4	B	301	EDO	1	0
4	C	301	EDO	1	0

5.7 Other polymers [i](#)

There are no such residues in this entry.

5.8 Polymer linkage issues [i](#)

There are no chain breaks in this entry.

6 Fit of model and data [i](#)

6.1 Protein, DNA and RNA chains [i](#)

In the following table, the column labelled ‘#RSRZ > 2’ contains the number (and percentage) of RSRZ outliers, followed by percent RSRZ outliers for the chain as percentile scores relative to all X-ray entries and entries of similar resolution. The OWAB column contains the minimum, median, 95th percentile and maximum values of the occupancy-weighted average B-factor per residue. The column labelled ‘Q < 0.9’ lists the number of (and percentage) of residues with an average occupancy less than 0.9.

Mol	Chain	Analysed	<RSRZ>	#RSRZ>2	OWAB(Å ²)	Q<0.9
1	A	194/209 (92%)	-0.02	9 (4%) 32 31	24, 34, 63, 94	5 (2%)
1	B	194/209 (92%)	-0.08	7 (3%) 42 43	25, 38, 71, 94	1 (0%)
1	C	192/209 (91%)	-0.08	3 (1%) 72 75	23, 41, 68, 89	3 (1%)
1	D	190/209 (90%)	0.04	9 (4%) 31 30	23, 38, 71, 89	16 (8%)
All	All	770/836 (92%)	-0.04	28 (3%) 42 43	23, 38, 69, 94	25 (3%)

All (28) RSRZ outliers are listed below:

Mol	Chain	Res	Type	RSRZ
1	A	191	LEU	10.4
1	D	207	ALA	9.7
1	B	208	ASN	7.3
1	D	206	HIS	6.4
1	D	208	ASN	6.3
1	A	190	HIS	6.2
1	A	189	GLU	5.8
1	A	33	LYS	4.6
1	B	153	ALA	4.6
1	B	190	HIS	4.5
1	D	40	THR	3.9
1	D	157	ARG	3.5
1	B	102	GLY	3.5
1	C	153	ALA	3.1
1	A	164	ASP	2.9
1	B	165	GLY	2.8
1	A	162	PRO	2.6
1	A	163	GLY	2.5
1	A	165	GLY	2.5
1	C	162	PRO	2.4
1	D	158	PRO	2.4

Continued on next page...

Continued from previous page...

Mol	Chain	Res	Type	RSRZ
1	D	28	TRP	2.4
1	C	74	TYR	2.3
1	D	196[A]	ARG	2.2
1	A	167	PHE	2.2
1	B	101	ASP	2.2
1	B	160	PRO	2.1
1	D	150	GLY	2.0

6.2 Non-standard residues in protein, DNA, RNA chains [i](#)

There are no non-standard protein/DNA/RNA residues in this entry.

6.3 Carbohydrates [i](#)

There are no monosaccharides in this entry.

6.4 Ligands [i](#)

In the following table, the Atoms column lists the number of modelled atoms in the group and the number defined in the chemical component dictionary. The B-factors column lists the minimum, median, 95th percentile and maximum values of B factors of atoms in the group. The column labelled 'Q< 0.9' lists the number of atoms with occupancy less than 0.9.

Mol	Type	Chain	Res	Atoms	RSCC	RSR	B-factors(Å ²)	Q<0.9
2	MG	B	303	1/1	0.83	0.18	83,83,83,83	0
3	CL	A	303	1/1	0.85	0.11	67,67,67,67	0
4	EDO	C	306	4/4	0.88	0.14	36,37,39,41	4
4	EDO	B	301	4/4	0.89	0.19	52,57,59,60	0
5	K3P	B	305	14/14	0.89	0.14	33,38,53,53	14
5	K3P	C	304	14/14	0.89	0.13	52,60,69,70	0
4	EDO	C	301	4/4	0.92	0.17	49,65,66,74	0
5	K3P	B	304	14/14	0.92	0.10	38,49,59,60	0
2	MG	C	303	1/1	0.95	0.03	39,39,39,39	0
2	MG	A	302	1/1	0.95	0.15	79,79,79,79	0
4	EDO	A	304	4/4	0.95	0.07	34,36,36,37	0
5	K3P	C	305	14/14	0.95	0.08	37,44,54,55	14
2	MG	D	302	1/1	0.96	0.09	42,42,42,42	0
2	MG	B	302	1/1	0.97	0.04	39,39,39,39	0
2	MG	D	301	1/1	0.97	0.04	40,40,40,40	0
2	MG	A	301	1/1	0.97	0.04	35,35,35,35	0

Continued on next page...

Continued from previous page...

Mol	Type	Chain	Res	Atoms	RSCC	RSR	B-factors(\AA^2)	Q<0.9
2	MG	C	302	1/1	0.97	0.18	75,75,75,75	0

6.5 Other polymers [i](#)

There are no such residues in this entry.