



wwPDB X-ray Structure Validation Summary Report ⓘ

Aug 7, 2023 – 08:14 PM EDT

PDB ID : 1QH1
Title : NITROGENASE MOFE PROTEIN FROM KLEBSIELLA PNEUMONIAE,
PHENOSAFRANIN OXIDIZED STATE
Authors : Mayer, S.M.; Lawson, D.M.; Gormal, C.A.; Roe, S.M.; Smith, B.E.
Deposited on : 1999-05-10
Resolution : 1.60 Å(reported)

This is a wwPDB X-ray Structure Validation Summary Report for a publicly released PDB entry.

We welcome your comments at validation@mail.wwpdb.org

A user guide is available at

<https://www.wwpdb.org/validation/2017/XrayValidationReportHelp>

with specific help available everywhere you see the ⓘ symbol.

The types of validation reports are described at

<http://www.wwpdb.org/validation/2017/FAQs#types>.

The following versions of software and data (see [references ⓘ](#)) were used in the production of this report:

MolProbity : 4.02b-467
Mogul : 1.8.5 (274361), CSD as541be (2020)
Xtriage (Phenix) : 1.13
EDS : 2.35
Percentile statistics : 20191225.v01 (using entries in the PDB archive December 25th 2019)
Refmac : 5.8.0158
CCP4 : 7.0.044 (Gargrove)
Ideal geometry (proteins) : Engh & Huber (2001)
Ideal geometry (DNA, RNA) : Parkinson et al. (1996)
Validation Pipeline (wwPDB-VP) : 2.35

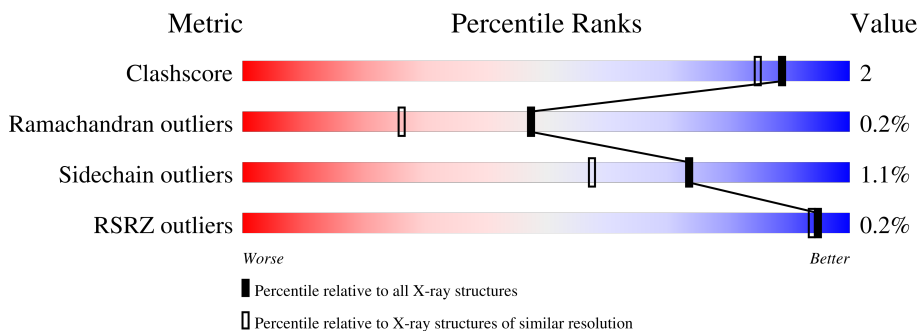
1 Overall quality at a glance

The following experimental techniques were used to determine the structure:

X-RAY DIFFRACTION

The reported resolution of this entry is 1.60 Å.

Percentile scores (ranging between 0-100) for global validation metrics of the entry are shown in the following graphic. The table shows the number of entries on which the scores are based.



Metric	Whole archive (#Entries)	Similar resolution (#Entries, resolution range(Å))
Clashscore	141614	3665 (1.60-1.60)
Ramachandran outliers	138981	3564 (1.60-1.60)
Sidechain outliers	138945	3563 (1.60-1.60)
RSRZ outliers	127900	3321 (1.60-1.60)

The table below summarises the geometric issues observed across the polymeric chains and their fit to the electron density. The red, orange, yellow and green segments of the lower bar indicate the fraction of residues that contain outliers for ≥ 3 , 2, 1 and 0 types of geometric quality criteria respectively. A grey segment represents the fraction of residues that are not modelled. The numeric value for each fraction is indicated below the corresponding segment, with a dot representing fractions $\leq 5\%$. The upper red bar (where present) indicates the fraction of residues that have poor fit to the electron density. The numeric value is given above the bar.

Mol	Chain	Length	Quality of chain
1	A	478	
1	C	478	
2	B	519	
2	D	519	

2 Entry composition [i](#)

There are 9 unique types of molecules in this entry. The entry contains 18303 atoms, of which 0 are hydrogens and 0 are deuteriums.

In the tables below, the ZeroOcc column contains the number of atoms modelled with zero occupancy, the AltConf column contains the number of residues with at least one atom in alternate conformation and the Trace column contains the number of residues modelled with at most 2 atoms.

- Molecule 1 is a protein called PROTEIN (NITROGENASE MOLYBDENUM IRON PROTEIN).

Mol	Chain	Residues	Atoms					ZeroOcc	AltConf	Trace
			Total	C	N	O	S			
1	A	478	Total	C	N	O	S	0	3	0
			3698	2355	630	690	23			
1	C	478	Total	C	N	O	S	0	1	0
			3706	2360	635	687	24			

There are 4 discrepancies between the modelled and reference sequences:

Chain	Residue	Modelled	Actual	Comment	Reference
A	85	VAL	ALA	conflict	UNP P00466
A	94	GLY	GLU	conflict	UNP P09772
C	85	VAL	ALA	conflict	UNP P00466
C	94	GLY	GLU	conflict	UNP P09772

- Molecule 2 is a protein called PROTEIN (NITROGENASE MOLYBDENUM IRON PROTEIN).

Mol	Chain	Residues	Atoms					ZeroOcc	AltConf	Trace
			Total	C	N	O	S			
2	B	519	Total	C	N	O	S	0	10	0
			4067	2601	675	760	31			
2	D	519	Total	C	N	O	S	0	3	0
			4057	2588	678	762	29			

- Molecule 3 is MAGNESIUM ION (three-letter code: MG) (formula: Mg).

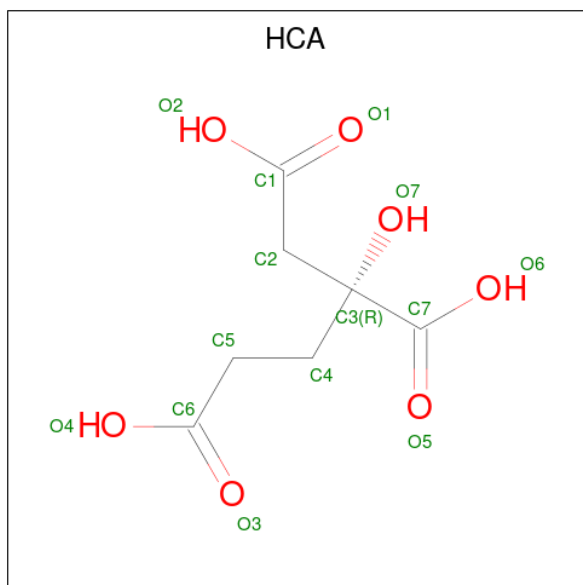
Mol	Chain	Residues	Atoms		ZeroOcc	AltConf
3	A	1	Total	Mg	0	0
			1	1		
3	B	3	Total	Mg	0	0
			3	3		
3	C	1	Total	Mg	0	0
			1	1		

Continued on next page...

Continued from previous page...

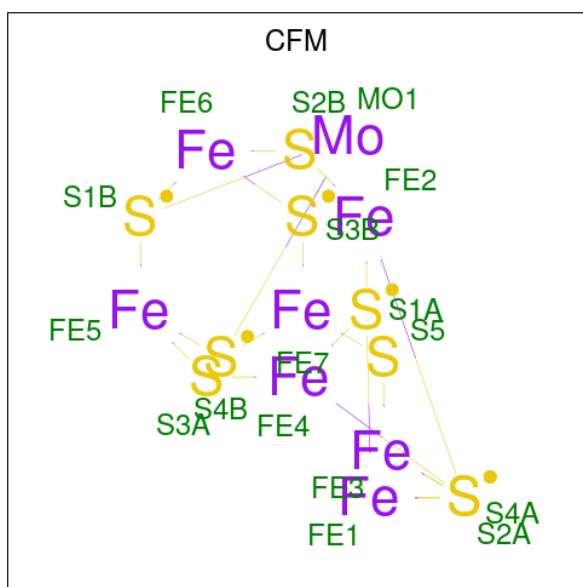
Mol	Chain	Residues	Atoms		ZeroOcc	AltConf
3	D	2	Total	Mg	0	0
			2	2		

- Molecule 4 is 3-HYDROXY-3-CARBOXY-ADIPIC ACID (three-letter code: HCA) (formula: $C_7H_{10}O_7$).



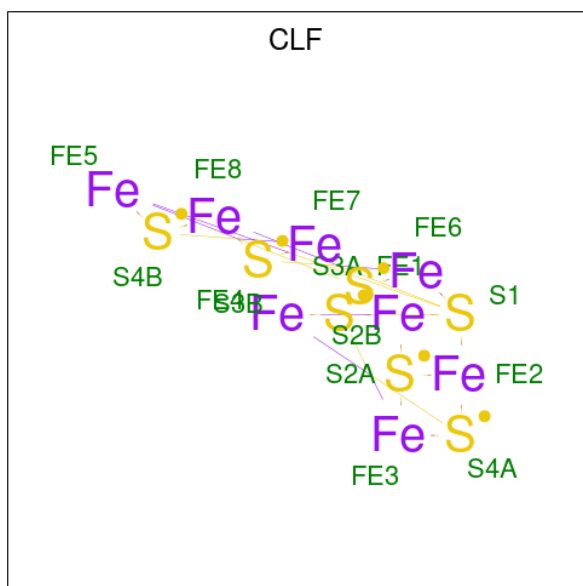
Mol	Chain	Residues	Atoms			ZeroOcc	AltConf
4	A	1	Total	C	O	0	0
			14	7	7		
4	C	1	Total	C	O	0	0
			14	7	7		

- Molecule 5 is FE-MO-S CLUSTER (three-letter code: CFM) (formula: Fe_7MoS_9).



Mol	Chain	Residues	Atoms				ZeroOcc	AltConf
5	A	1	Total	Fe	Mo	S	0	0
			17	7	1	9		
5	C	1	Total	Fe	Mo	S	0	0
			17	7	1	9		

- Molecule 6 is FE(8)-S(7) CLUSTER (three-letter code: CLF) (formula: Fe₈S₇).



Mol	Chain	Residues	Atoms			ZeroOcc	AltConf
6	A	1	Total	Fe	S	0	0
			15	8	7		
6	C	1	Total	Fe	S	0	0
			15	8	7		

- Molecule 7 is 1,2-ETHANEDIOL (three-letter code: EDO) (formula: C₂H₆O₂).



Mol	Chain	Residues	Atoms	ZeroOcc	AltConf
7	A	1	Total C O 4 2 2	0	0
7	A	1	Total C O 4 2 2	0	0
7	A	1	Total C O 4 2 2	0	0
7	A	1	Total C O 4 2 2	0	0
7	B	1	Total C O 4 2 2	0	0
7	B	1	Total C O 4 2 2	0	0
7	B	1	Total C O 4 2 2	0	0
7	C	1	Total C O 4 2 2	0	0
7	D	1	Total C O 4 2 2	0	0
7	D	1	Total C O 4 2 2	0	0
7	D	1	Total C O 4 2 2	0	0
7	D	1	Total C O 4 2 2	0	0
7	D	1	Total C O 4 2 2	0	0

- Molecule 8 is CHLORIDE ION (three-letter code: CL) (formula: Cl).

Mol	Chain	Residues	Atoms	ZeroOcc	AltConf
8	B	1	Total Cl 1 1	0	0
8	D	1	Total Cl 1 1	0	0

- Molecule 9 is water.

Mol	Chain	Residues	Atoms	ZeroOcc	AltConf
9	A	589	Total O 589 589	0	0
9	B	737	Total O 737 737	0	0
9	C	538	Total O 538 538	0	0
9	D	758	Total O 758 758	0	0

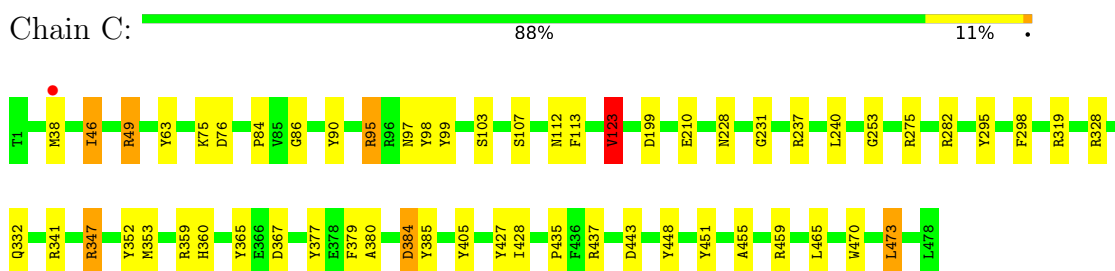
3 Residue-property plots [i](#)

These plots are drawn for all protein, RNA, DNA and oligosaccharide chains in the entry. The first graphic for a chain summarises the proportions of the various outlier classes displayed in the second graphic. The second graphic shows the sequence view annotated by issues in geometry and electron density. Residues are color-coded according to the number of geometric quality criteria for which they contain at least one outlier: green = 0, yellow = 1, orange = 2 and red = 3 or more. A red dot above a residue indicates a poor fit to the electron density ($RSRZ > 2$). Stretches of 2 or more consecutive residues without any outlier are shown as a green connector. Residues present in the sample, but not in the model, are shown in grey.

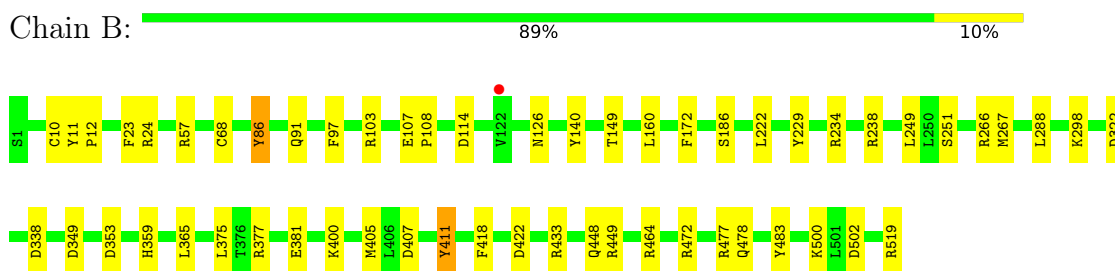
- Molecule 1: PROTEIN (NITROGENASE MOLYBDENUM IRON PROTEIN)



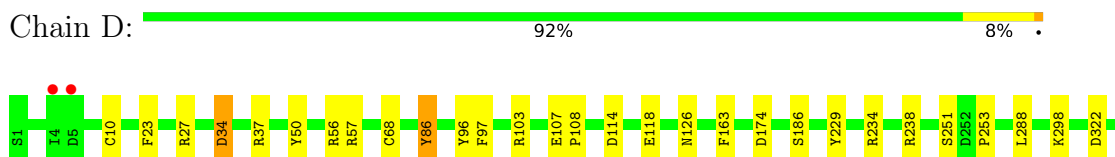
- Molecule 1: PROTEIN (NITROGENASE MOLYBDENUM IRON PROTEIN)

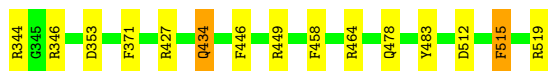


- Molecule 2: PROTEIN (NITROGENASE MOLYBDENUM IRON PROTEIN)



- Molecule 2: PROTEIN (NITROGENASE MOLYBDENUM IRON PROTEIN)





4 Data and refinement statistics

Property	Value	Source
Space group	C 1 2 1	Depositor
Cell constants a, b, c, α , β , γ	204.18Å 75.22Å 162.84Å 90.00° 122.88° 90.00°	Depositor
Resolution (Å)	50.00 – 1.60 136.75 – 1.60	Depositor EDS
% Data completeness (in resolution range)	98.9 (50.00-1.60) 98.7 (136.75-1.60)	Depositor EDS
R_{merge}	0.05	Depositor
R_{sym}	(Not available)	Depositor
$\langle I/\sigma(I) \rangle$ ¹	3.91 (at 1.60Å)	Xtrriage
Refinement program	REFMAC	Depositor
R, R_{free}	0.158 , 0.199 0.154 , (Not available)	Depositor DCC
R_{free} test set	No test flags present.	wwPDB-VP
Wilson B-factor (Å ²)	15.0	Xtrriage
Anisotropy	0.184	Xtrriage
Bulk solvent k_{sol} (e/Å ³), B_{sol} (Å ²)	0.32 , 54.5	EDS
L-test for twinning ²	$\langle L \rangle = 0.48$, $\langle L^2 \rangle = 0.31$	Xtrriage
Estimated twinning fraction	No twinning to report.	Xtrriage
F_o, F_c correlation	0.97	EDS
Total number of atoms	18303	wwPDB-VP
Average B, all atoms (Å ²)	20.0	wwPDB-VP

Xtrriage's analysis on translational NCS is as follows: *The largest off-origin peak in the Patterson function is 3.38% of the height of the origin peak. No significant pseudotranslation is detected.*

¹Intensities estimated from amplitudes.

²Theoretical values of $\langle |L| \rangle$, $\langle L^2 \rangle$ for acentric reflections are 0.5, 0.333 respectively for untwinned datasets, and 0.375, 0.2 for perfectly twinned datasets.

5 Model quality [i](#)

5.1 Standard geometry [i](#)

Bond lengths and bond angles in the following residue types are not validated in this section: EDO, CLF, CL, CFM, HCA, MG

The Z score for a bond length (or angle) is the number of standard deviations the observed value is removed from the expected value. A bond length (or angle) with $|Z| > 5$ is considered an outlier worth inspection. RMSZ is the root-mean-square of all Z scores of the bond lengths (or angles).

Mol	Chain	Bond lengths		Bond angles	
		RMSZ	# Z >5	RMSZ	# Z >5
1	A	0.71	0/3795	1.38	35/5142 (0.7%)
1	C	0.70	0/3795	1.40	46/5138 (0.9%)
2	B	0.73	0/4210	1.39	44/5714 (0.8%)
2	D	0.75	0/4166	1.37	44/5653 (0.8%)
All	All	0.72	0/15966	1.39	169/21647 (0.8%)

Chiral center outliers are detected by calculating the chiral volume of a chiral center and verifying if the center is modelled as a planar moiety or with the opposite hand. A planarity outlier is detected by checking planarity of atoms in a peptide group, atoms in a mainchain group or atoms of a sidechain that are expected to be planar.

Mol	Chain	#Chirality outliers	#Planarity outliers
1	A	0	3
1	C	0	6
All	All	0	9

There are no bond length outliers.

The worst 5 of 169 bond angle outliers are listed below:

Mol	Chain	Res	Type	Atoms	Z	Observed(°)	Ideal(°)
2	B	407	ASP	CB-CG-OD2	17.77	134.29	118.30
1	C	49	ARG	NE-CZ-NH2	-14.28	113.16	120.30
2	B	449	ARG	CD-NE-CZ	14.08	143.31	123.60
2	B	103	ARG	NE-CZ-NH2	-13.49	113.55	120.30
2	B	103	ARG	NE-CZ-NH1	12.27	126.44	120.30

There are no chirality outliers.

5 of 9 planarity outliers are listed below:

Mol	Chain	Res	Type	Group
1	A	17	GLU	Mainchain
1	A	182	CYS	Mainchain
1	A	231	GLY	Mainchain
1	C	46	ILE	Mainchain
1	C	95	ARG	Sidechain

5.2 Too-close contacts [i](#)

In the following table, the Non-H and H(model) columns list the number of non-hydrogen atoms and hydrogen atoms in the chain respectively. The H(added) column lists the number of hydrogen atoms added and optimized by MolProbity. The Clashes column lists the number of clashes within the asymmetric unit, whereas Symm-Clashes lists symmetry-related clashes.

Mol	Chain	Non-H	H(model)	H(added)	Clashes	Symm-Clashes
1	A	3698	0	3554	16	0
1	C	3706	0	3581	15	0
2	B	4067	0	3912	18	0
2	D	4057	0	3919	8	0
3	A	1	0	0	0	0
3	B	3	0	0	0	0
3	C	1	0	0	0	0
3	D	2	0	0	0	0
4	A	14	0	6	2	0
4	C	14	0	6	1	0
5	A	17	0	0	0	0
5	C	17	0	0	0	0
6	A	15	0	0	1	0
6	C	15	0	0	1	0
7	A	16	0	24	0	0
7	B	12	0	18	0	0
7	C	4	0	6	0	0
7	D	20	0	30	3	0
8	B	1	0	0	0	0
8	D	1	0	0	0	0
9	A	589	0	0	1	0
9	B	737	0	0	6	0
9	C	538	0	0	5	0
9	D	758	0	0	1	0
All	All	18303	0	15056	57	0

The all-atom clashscore is defined as the number of clashes found per 1000 atoms (including hydrogen atoms). The all-atom clashscore for this structure is 2.

The worst 5 of 57 close contacts within the same asymmetric unit are listed below, sorted by their

clash magnitude.

Atom-1	Atom-2	Interatomic distance (Å)	Clash overlap (Å)
2:B:222:LEU:HB2	2:B:249:LEU:HD23	1.68	0.76
1:C:347:ARG:HG3	1:C:465:LEU:HD21	1.69	0.75
1:C:210:GLU:OE2	1:C:210:GLU:CG	2.37	0.73
1:A:428:ILE:HG13	2:B:108:PRO:HB3	1.79	0.65
1:A:408:GLU:HG2	1:A:412:LYS:HE3	1.79	0.65

There are no symmetry-related clashes.

5.3 Torsion angles [i](#)

5.3.1 Protein backbone [i](#)

In the following table, the Percentiles column shows the percent Ramachandran outliers of the chain as a percentile score with respect to all X-ray entries followed by that with respect to entries of similar resolution.

The Analysed column shows the number of residues for which the backbone conformation was analysed, and the total number of residues.

Mol	Chain	Analysed	Favoured	Allowed	Outliers	Percentiles	
1	A	479/478 (100%)	461 (96%)	18 (4%)	0	100	100
1	C	477/478 (100%)	460 (96%)	17 (4%)	0	100	100
2	B	527/519 (102%)	516 (98%)	9 (2%)	2 (0%)	34	15
2	D	520/519 (100%)	508 (98%)	10 (2%)	2 (0%)	34	15
All	All	2003/1994 (100%)	1945 (97%)	54 (3%)	4 (0%)	47	26

All (4) Ramachandran outliers are listed below:

Mol	Chain	Res	Type
2	D	251	SER
2	B	251	SER
2	B	10	CYS
2	D	10	CYS

5.3.2 Protein sidechains [i](#)

In the following table, the Percentiles column shows the percent sidechain outliers of the chain as a percentile score with respect to all X-ray entries followed by that with respect to entries of similar

resolution.

The Analysed column shows the number of residues for which the sidechain conformation was analysed, and the total number of residues.

Mol	Chain	Analysed	Rotameric	Outliers	Percentiles	
1	A	376/397 (95%)	373 (99%)	3 (1%)	81	70
1	C	377/397 (95%)	370 (98%)	7 (2%)	57	34
2	B	430/442 (97%)	428 (100%)	2 (0%)	88	80
2	D	429/442 (97%)	423 (99%)	6 (1%)	67	47
All	All	1612/1678 (96%)	1594 (99%)	18 (1%)	73	57

5 of 18 residues with a non-rotameric sidechain are listed below:

Mol	Chain	Res	Type
2	D	86	TYR
2	D	434	GLN
2	D	253	PRO
1	C	347	ARG
2	D	56	ARG

Sometimes sidechains can be flipped to improve hydrogen bonding and reduce clashes. 5 of 8 such sidechains are listed below:

Mol	Chain	Res	Type
2	D	359	HIS
2	D	91	GLN
1	C	112	ASN
2	B	359	HIS
1	C	118	GLN

5.3.3 RNA [i](#)

There are no RNA molecules in this entry.

5.4 Non-standard residues in protein, DNA, RNA chains [i](#)

There are no non-standard protein/DNA/RNA residues in this entry.

5.5 Carbohydrates [i](#)

There are no monosaccharides in this entry.

5.6 Ligand geometry

Of 28 ligands modelled in this entry, 9 are monoatomic - leaving 19 for Mogul analysis.

In the following table, the Counts columns list the number of bonds (or angles) for which Mogul statistics could be retrieved, the number of bonds (or angles) that are observed in the model and the number of bonds (or angles) that are defined in the Chemical Component Dictionary. The Link column lists molecule types, if any, to which the group is linked. The Z score for a bond length (or angle) is the number of standard deviations the observed value is removed from the expected value. A bond length (or angle) with $|Z| > 2$ is considered an outlier worth inspection. RMSZ is the root-mean-square of all Z scores of the bond lengths (or angles).

Mol	Type	Chain	Res	Link	Bond lengths			Bond angles		
					Counts	RMSZ	# Z > 2	Counts	RMSZ	# Z > 2
5	CFM	C	503	1	0,24,24	-	-	-		
7	EDO	A	2775	-	3,3,3	0.48	0	2,2,2	0.44	0
7	EDO	D	2783	-	3,3,3	0.68	0	2,2,2	0.25	0
5	CFM	A	503	1	0,24,24	-	-	-		
6	CLF	C	505	1,2	0,24,24	-	-	-		
7	EDO	B	2781	-	3,3,3	0.57	0	2,2,2	0.25	0
7	EDO	D	2785	-	3,3,3	0.43	0	2,2,2	0.15	0
7	EDO	B	2779	-	3,3,3	0.64	0	2,2,2	0.49	0
6	CLF	A	505	1,2	0,24,24	-	-	-		
7	EDO	C	2782	-	3,3,3	0.33	0	2,2,2	0.55	0
7	EDO	D	2780	-	3,3,3	0.71	0	2,2,2	1.05	0
7	EDO	B	2778	-	3,3,3	0.44	0	2,2,2	0.39	0
4	HCA	C	501	-	13,13,13	2.81	6 (46%)	14,18,18	2.88	6 (42%)
7	EDO	A	2776	-	3,3,3	0.50	0	2,2,2	0.89	0
7	EDO	A	2777	-	3,3,3	0.33	0	2,2,2	0.53	0
7	EDO	D	2784	-	3,3,3	0.73	0	2,2,2	0.17	0
7	EDO	A	2774	-	3,3,3	0.46	0	2,2,2	0.53	0
7	EDO	D	2773	-	3,3,3	0.45	0	2,2,2	0.68	0
4	HCA	A	501	-	13,13,13	2.89	7 (53%)	14,18,18	2.31	4 (28%)

In the following table, the Chirals column lists the number of chiral outliers, the number of chiral centers analysed, the number of these observed in the model and the number defined in the Chemical Component Dictionary. Similar counts are reported in the Torsion and Rings columns. '-' means no outliers of that kind were identified.

Mol	Type	Chain	Res	Link	Chirals	Torsions	Rings
4	HCA	C	501	-	-	3/17/17/17	-
7	EDO	A	2776	-	-	1/1/1/1	-
7	EDO	B	2781	-	-	1/1/1/1	-
7	EDO	D	2785	-	-	0/1/1/1	-
7	EDO	B	2779	-	-	0/1/1/1	-

Continued on next page...

Continued from previous page...

Mol	Type	Chain	Res	Link	Chirals	Torsions	Rings
7	EDO	A	2775	-	-	0/1/1/1	-
7	EDO	D	2783	-	-	0/1/1/1	-
6	CLF	A	505	1,2	-	-	0/12/10/10
7	EDO	C	2782	-	-	0/1/1/1	-
7	EDO	A	2777	-	-	0/1/1/1	-
6	CLF	C	505	1,2	-	-	0/12/10/10
7	EDO	D	2780	-	-	1/1/1/1	-
7	EDO	D	2773	-	-	1/1/1/1	-
7	EDO	D	2784	-	-	0/1/1/1	-
7	EDO	A	2774	-	-	0/1/1/1	-
7	EDO	B	2778	-	-	0/1/1/1	-
4	HCA	A	501	-	-	3/17/17/17	-

The worst 5 of 13 bond length outliers are listed below:

Mol	Chain	Res	Type	Atoms	Z	Observed(Å)	Ideal(Å)
4	C	501	HCA	C2-C1	5.10	1.66	1.50
4	A	501	HCA	C2-C3	-5.09	1.47	1.53
4	A	501	HCA	C2-C1	4.61	1.64	1.50
4	C	501	HCA	C2-C3	-4.37	1.48	1.53
4	C	501	HCA	O7-C3	4.25	1.51	1.43

The worst 5 of 10 bond angle outliers are listed below:

Mol	Chain	Res	Type	Atoms	Z	Observed(°)	Ideal(°)
4	C	501	HCA	O2-C1-O1	6.82	140.30	123.30
4	A	501	HCA	O2-C1-O1	5.71	137.54	123.30
4	C	501	HCA	O6-C7-C3	3.98	119.96	113.05
4	C	501	HCA	O1-C1-C2	-3.89	111.57	122.94
4	C	501	HCA	C4-C5-C6	3.62	120.95	112.75

There are no chirality outliers.

5 of 10 torsion outliers are listed below:

Mol	Chain	Res	Type	Atoms
4	A	501	HCA	C7-C3-C4-C5
7	B	2781	EDO	O1-C1-C2-O2
7	A	2776	EDO	O1-C1-C2-O2
7	D	2773	EDO	O1-C1-C2-O2
4	C	501	HCA	C7-C3-C4-C5

There are no ring outliers.

5 monomers are involved in 8 short contacts:

Mol	Chain	Res	Type	Clashes	Symm-Clashes
6	C	505	CLF	1	0
6	A	505	CLF	1	0
7	D	2780	EDO	3	0
4	C	501	HCA	1	0
4	A	501	HCA	2	0

5.7 Other polymers [i](#)

There are no such residues in this entry.

5.8 Polymer linkage issues [i](#)

There are no chain breaks in this entry.

6 Fit of model and data [i](#)

6.1 Protein, DNA and RNA chains [i](#)

In the following table, the column labelled ‘#RSRZ> 2’ contains the number (and percentage) of RSRZ outliers, followed by percent RSRZ outliers for the chain as percentile scores relative to all X-ray entries and entries of similar resolution. The OWAB column contains the minimum, median, 95th percentile and maximum values of the occupancy-weighted average B-factor per residue. The column labelled ‘Q< 0.9’ lists the number of (and percentage) of residues with an average occupancy less than 0.9.

Mol	Chain	Analysed	<RSRZ>	#RSRZ>2	OWAB(Å ²)	Q<0.9
1	A	478/478 (100%)	-0.58	0 100 100	11, 18, 30, 40	0
1	C	478/478 (100%)	-0.54	1 (0%) 95 94	12, 20, 31, 40	0
2	B	519/519 (100%)	-0.61	1 (0%) 95 94	11, 17, 29, 38	0
2	D	519/519 (100%)	-0.65	2 (0%) 92 92	10, 15, 26, 38	0
All	All	1994/1994 (100%)	-0.60	4 (0%) 95 94	10, 17, 29, 40	0

All (4) RSRZ outliers are listed below:

Mol	Chain	Res	Type	RSRZ
2	D	5	ASP	3.2
2	D	4	ILE	2.4
1	C	38	MET	2.3
2	B	122	VAL	2.2

6.2 Non-standard residues in protein, DNA, RNA chains [i](#)

There are no non-standard protein/DNA/RNA residues in this entry.

6.3 Carbohydrates [i](#)

There are no monosaccharides in this entry.

6.4 Ligands [i](#)

In the following table, the Atoms column lists the number of modelled atoms in the group and the number defined in the chemical component dictionary. The B-factors column lists the minimum, median, 95th percentile and maximum values of B factors of atoms in the group. The column labelled ‘Q< 0.9’ lists the number of atoms with occupancy less than 0.9.

Mol	Type	Chain	Res	Atoms	RSCC	RSR	B-factors(\AA^2)	Q<0.9
7	EDO	A	2776	4/4	0.82	0.11	30,33,36,36	0
7	EDO	A	2775	4/4	0.89	0.22	30,33,34,34	0
7	EDO	B	2781	4/4	0.92	0.13	21,21,22,25	0
7	EDO	D	2780	4/4	0.92	0.13	24,25,26,30	0
7	EDO	D	2773	4/4	0.93	0.13	21,22,25,25	0
3	MG	B	3004	1/1	0.93	0.06	25,25,25,25	0
7	EDO	B	2778	4/4	0.94	0.12	24,24,25,26	0
7	EDO	D	2784	4/4	0.95	0.10	15,18,20,20	0
7	EDO	B	2779	4/4	0.96	0.11	17,20,22,22	0
7	EDO	A	2777	4/4	0.96	0.10	33,33,34,37	0
7	EDO	D	2783	4/4	0.96	0.07	17,19,19,23	0
7	EDO	C	2782	4/4	0.96	0.07	28,28,29,29	0
7	EDO	A	2774	4/4	0.97	0.09	20,23,24,25	0
3	MG	B	3003	1/1	0.97	0.08	27,27,27,27	0
3	MG	D	3007	1/1	0.97	0.11	29,29,29,29	0
4	HCA	C	501	14/14	0.97	0.07	12,14,16,16	0
7	EDO	D	2785	4/4	0.97	0.11	19,27,27,30	0
3	MG	A	3001	1/1	0.98	0.05	18,18,18,18	0
4	HCA	A	501	14/14	0.98	0.06	11,14,16,16	0
8	CL	B	2771	1/1	0.98	0.04	20,20,20,20	0
3	MG	B	3002	1/1	0.99	0.06	12,12,12,12	0
3	MG	C	3005	1/1	0.99	0.04	19,19,19,19	0
3	MG	D	3006	1/1	0.99	0.06	12,12,12,12	0
5	CFM	A	503	17/17	0.99	0.06	11,13,14,15	0
5	CFM	C	503	17/17	0.99	0.06	12,14,15,16	0
6	CLF	A	505	15/15	0.99	0.06	12,15,17,17	0
6	CLF	C	505	15/15	0.99	0.06	11,13,14,15	0
8	CL	D	2772	1/1	0.99	0.06	17,17,17,17	0

6.5 Other polymers [i](#)

There are no such residues in this entry.