



wwPDB X-ray Structure Validation Summary Report ⓘ

Aug 22, 2023 – 05:44 AM EDT

PDB ID : 2QFR
Title : Crystal structure of red kidney bean purple acid phosphatase with bound sulfate
Authors : Guddat, L.W.; Schenk, G.; Gahan, L.R.; Elliot, T.W.; Leung, E.
Deposited on : 2007-06-27
Resolution : 2.40 Å(reported)

This is a wwPDB X-ray Structure Validation Summary Report for a publicly released PDB entry.

We welcome your comments at validation@mail.wwpdb.org

A user guide is available at

<https://www.wwpdb.org/validation/2017/XrayValidationReportHelp>

with specific help available everywhere you see the ⓘ symbol.

The types of validation reports are described at

<http://www.wwpdb.org/validation/2017/FAQs#types>.

The following versions of software and data (see [references ⓘ](#)) were used in the production of this report:

MolProbity : 4.02b-467
Mogul : 1.8.5 (274361), CSD as541be (2020)
Xtriage (Phenix) : 1.13
EDS : 2.35
Percentile statistics : 20191225.v01 (using entries in the PDB archive December 25th 2019)
Refmac : 5.8.0158
CCP4 : 7.0.044 (Gargrove)
Ideal geometry (proteins) : Engh & Huber (2001)
Ideal geometry (DNA, RNA) : Parkinson et al. (1996)
Validation Pipeline (wwPDB-VP) : 2.35

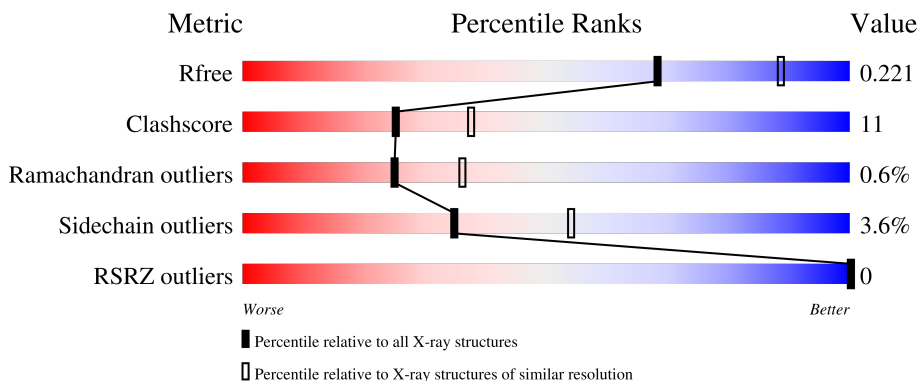
1 Overall quality at a glance

The following experimental techniques were used to determine the structure:

X-RAY DIFFRACTION



The reported resolution of this entry is 2.40 Å.

Percentile scores (ranging between 0-100) for global validation metrics of the entry are shown in the following graphic. The table shows the number of entries on which the scores are based.



Metric	Whole archive (#Entries)	Similar resolution (#Entries, resolution range(Å))
R_{free}	130704	3907 (2.40-2.40)
Clashscore	141614	4398 (2.40-2.40)
Ramachandran outliers	138981	4318 (2.40-2.40)
Sidechain outliers	138945	4319 (2.40-2.40)
RSRZ outliers	127900	3811 (2.40-2.40)

The table below summarises the geometric issues observed across the polymeric chains and their fit to the electron density. The red, orange, yellow and green segments of the lower bar indicate the fraction of residues that contain outliers for ≥ 3 , 2, 1 and 0 types of geometric quality criteria respectively. A grey segment represents the fraction of residues that are not modelled. The numeric value for each fraction is indicated below the corresponding segment, with a dot representing fractions $\leq 5\%$. The upper red bar (where present) indicates the fraction of residues that have poor fit to the electron density. The numeric value is given above the bar.

Mol	Chain	Length	Quality of chain
1	A	424	 77% 21% .
1	B	424	 78% 20% .

2 Entry composition [i](#)

There are 7 unique types of molecules in this entry. The entry contains 7513 atoms, of which 0 are hydrogens and 0 are deuteriums.

In the tables below, the ZeroOcc column contains the number of atoms modelled with zero occupancy, the AltConf column contains the number of residues with at least one atom in alternate conformation and the Trace column contains the number of residues modelled with at most 2 atoms.

- Molecule 1 is a protein called Purple acid phosphatase.

Mol	Chain	Residues	Atoms					ZeroOcc	AltConf	Trace
			Total	C	N	O	S			
1	A	424	3487	2240	603	634	10	0	0	0
1	B	424	3487	2240	603	634	10	0	0	0

- Molecule 2 is FE (III) ION (three-letter code: FE) (formula: Fe).

Mol	Chain	Residues	Atoms		ZeroOcc	AltConf
2	A	1	Total	Fe	0	0
			1	1		
2	B	1	Total	Fe	0	0
			1	1		

- Molecule 3 is ZINC ION (three-letter code: ZN) (formula: Zn).

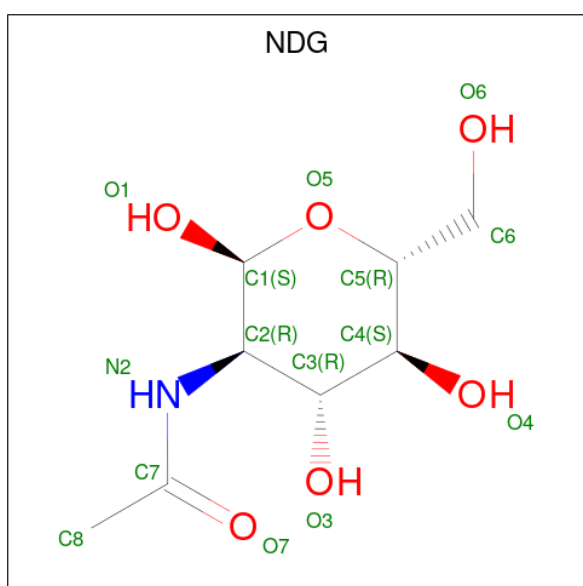
Mol	Chain	Residues	Atoms		ZeroOcc	AltConf
3	A	1	Total	Zn	0	0
			1	1		
3	B	1	Total	Zn	0	0
			1	1		

- Molecule 4 is SULFATE ION (three-letter code: SO4) (formula: O₄S).



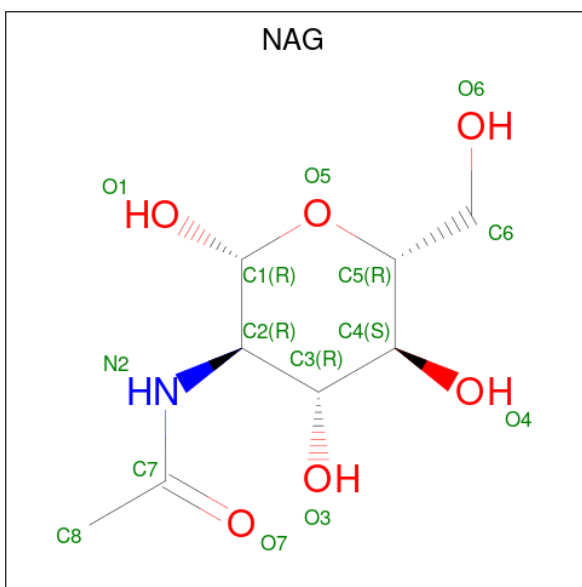
Mol	Chain	Residues	Atoms			ZeroOcc	AltConf
			Total	O	S		
4	A	1	5	4	1	0	0
4	A	1	5	4	1	0	0
4	B	1	5	4	1	0	0
4	B	1	5	4	1	0	0

- Molecule 5 is 2-acetamido-2-deoxy-alpha-D-glucopyranose (three-letter code: NDG) (formula: C₈H₁₅NO₆).



Mol	Chain	Residues	Atoms				ZeroOcc	AltConf
5	A	1	Total	C	N	O	0	0
			15	8	1	6		
5	A	1	Total	C	N	O	0	0
			15	8	1	6		

- Molecule 6 is 2-acetamido-2-deoxy-beta-D-glucopyranose (three-letter code: NAG) (formula: C₈H₁₅NO₆).



Mol	Chain	Residues	Atoms				ZeroOcc	AltConf
6	A	1	Total	C	N	O	0	0
			14	8	1	5		
6	A	1	Total	C	N	O	0	0
			14	8	1	5		
6	B	1	Total	C	N	O	0	0
			14	8	1	5		
6	B	1	Total	C	N	O	0	0
			14	8	1	5		
6	B	1	Total	C	N	O	0	0
			14	8	1	5		
6	B	1	Total	C	N	O	0	0
			14	8	1	5		

- Molecule 7 is water.

Mol	Chain	Residues	Atoms		ZeroOcc	AltConf
7	A	199	Total	O	0	0
			199	199		

Continued on next page...

Continued from previous page...

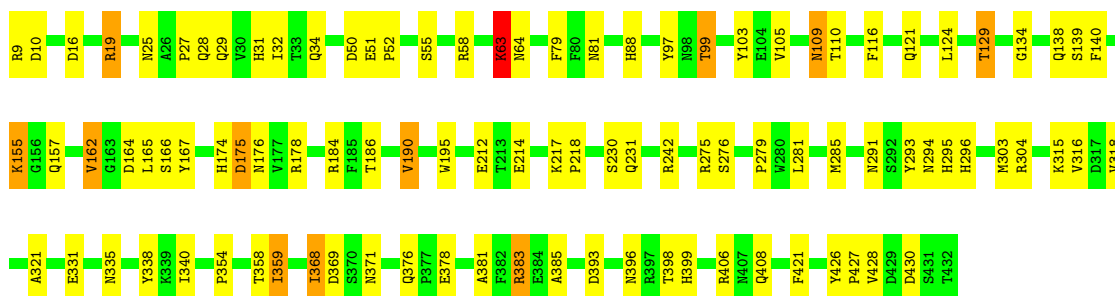
Mol	Chain	Residues	Atoms		ZeroOcc	AltConf
7	B	202	Total 202	O 202	0	0

3 Residue-property plots [i](#)


These plots are drawn for all protein, RNA, DNA and oligosaccharide chains in the entry. The first graphic for a chain summarises the proportions of the various outlier classes displayed in the second graphic. The second graphic shows the sequence view annotated by issues in geometry and electron density. Residues are color-coded according to the number of geometric quality criteria for which they contain at least one outlier: green = 0, yellow = 1, orange = 2 and red = 3 or more. A red dot above a residue indicates a poor fit to the electron density ($RSRZ > 2$). Stretches of 2 or more consecutive residues without any outlier are shown as a green connector. Residues present in the sample, but not in the model, are shown in grey.

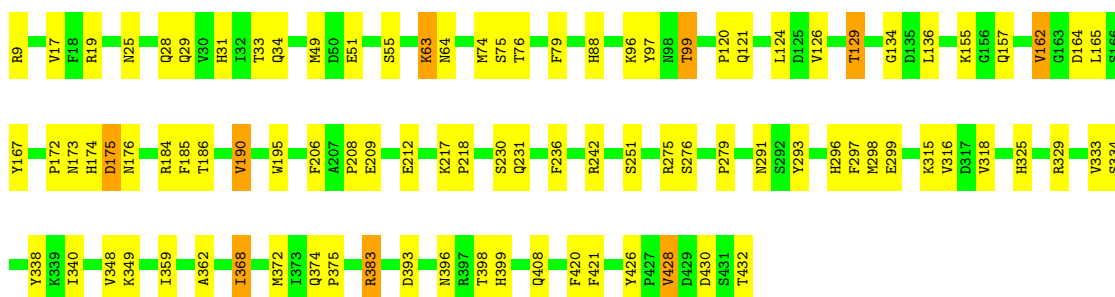
- Molecule 1: Purple acid phosphatase

Chain A:  77% 21%



- Molecule 1: Purple acid phosphatase

Chain B:  78% 20%



4 Data and refinement statistics i

Property	Value	Source
Space group	I 41	Depositor
Cell constants a, b, c, α , β , γ	148.03Å 148.03Å 160.09Å 90.00° 90.00° 90.00°	Depositor
Resolution (Å)	43.00 – 2.40 43.80 – 2.40	Depositor EDS
% Data completeness (in resolution range)	82.0 (43.00-2.40) 92.3 (43.80-2.40)	Depositor EDS
R_{merge}	0.12	Depositor
R_{sym}	0.12	Depositor
$\langle I/\sigma(I) \rangle$ ¹	0.64 (at 2.39Å)	Xtrriage
Refinement program	CNS	Depositor
R, R_{free}	0.171 , 0.211 0.185 , 0.221	Depositor DCC
R_{free} test set	6265 reflections (10.11%)	wwPDB-VP
Wilson B-factor (Å ²)	25.3	Xtrriage
Anisotropy	0.100	Xtrriage
Bulk solvent k_{sol} (e/Å ³), B_{sol} (Å ²)	0.31 , 20.0	EDS
L-test for twinning ²	$\langle L \rangle = 0.50$, $\langle L^2 \rangle = 0.34$	Xtrriage
Estimated twinning fraction	0.470 for -h,k,-l	Xtrriage
F_o, F_c correlation	0.94	EDS
Total number of atoms	7513	wwPDB-VP
Average B, all atoms (Å ²)	27.0	wwPDB-VP

Xtrriage's analysis on translational NCS is as follows: *The largest off-origin peak in the Patterson function is 3.34% of the height of the origin peak. No significant pseudotranslation is detected.*

¹Intensities estimated from amplitudes.

²Theoretical values of $\langle |L| \rangle$, $\langle L^2 \rangle$ for acentric reflections are 0.5, 0.333 respectively for untwinned datasets, and 0.375, 0.2 for perfectly twinned datasets.

5 Model quality [i](#)

5.1 Standard geometry [i](#)

Bond lengths and bond angles in the following residue types are not validated in this section: SO4, NDG, FE, NAG, ZN

The Z score for a bond length (or angle) is the number of standard deviations the observed value is removed from the expected value. A bond length (or angle) with $|Z| > 5$ is considered an outlier worth inspection. RMSZ is the root-mean-square of all Z scores of the bond lengths (or angles).

Mol	Chain	Bond lengths		Bond angles	
		RMSZ	# Z >5	RMSZ	# Z >5
1	A	0.38	0/3606	0.61	0/4905
1	B	0.38	0/3606	0.60	0/4905
All	All	0.38	0/7212	0.60	0/9810

There are no bond length outliers.

There are no bond angle outliers.

There are no chirality outliers.

There are no planarity outliers.

5.2 Too-close contacts [i](#)

In the following table, the Non-H and H(model) columns list the number of non-hydrogen atoms and hydrogen atoms in the chain respectively. The H(added) column lists the number of hydrogen atoms added and optimized by MolProbity. The Clashes column lists the number of clashes within the asymmetric unit, whereas Symm-Clashes lists symmetry-related clashes.

Mol	Chain	Non-H	H(model)	H(added)	Clashes	Symm-Clashes
1	A	3487	0	3300	77	0
1	B	3487	0	3297	68	0
2	A	1	0	0	0	0
2	B	1	0	0	0	0
3	A	1	0	0	0	0
3	B	1	0	0	0	0
4	A	10	0	0	0	0
4	B	10	0	0	0	0
5	A	30	0	24	5	0
6	A	28	0	26	0	0
6	B	56	0	52	3	0

Continued on next page...

Continued from previous page...

Mol	Chain	Non-H	H(model)	H(added)	Clashes	Symm-Clashes
7	A	199	0	0	2	0
7	B	202	0	0	3	0
All	All	7513	0	6699	148	0

The all-atom clashscore is defined as the number of clashes found per 1000 atoms (including hydrogen atoms). The all-atom clashscore for this structure is 11.

The worst 5 of 148 close contacts within the same asymmetric unit are listed below, sorted by their clash magnitude.

Atom-1	Atom-2	Interatomic distance (Å)	Clash overlap (Å)
1:B:97:TYR:O	1:B:99:THR:HG22	1.77	0.84
1:A:138:GLN:NE2	1:A:178:ARG:HH11	1.77	0.83
1:A:316:VAL:HG23	1:A:354:PRO:HB3	1.63	0.81
1:B:275:ARG:NH2	1:B:315:LYS:O	2.16	0.79
1:A:129:THR:HB	1:A:393:ASP:OD1	1.85	0.76

There are no symmetry-related clashes.

5.3 Torsion angles [i](#)

5.3.1 Protein backbone [i](#)

In the following table, the Percentiles column shows the percent Ramachandran outliers of the chain as a percentile score with respect to all X-ray entries followed by that with respect to entries of similar resolution.

The Analysed column shows the number of residues for which the backbone conformation was analysed, and the total number of residues.

Mol	Chain	Analysed	Favoured	Allowed	Outliers	Percentiles	
1	A	422/424 (100%)	391 (93%)	28 (7%)	3 (1%)	22	32
1	B	422/424 (100%)	392 (93%)	28 (7%)	2 (0%)	29	41
All	All	844/848 (100%)	783 (93%)	56 (7%)	5 (1%)	25	36

All (5) Ramachandran outliers are listed below:

Mol	Chain	Res	Type
1	A	63	LYS
1	A	175	ASP

Continued on next page...

Continued from previous page...

Mol	Chain	Res	Type
1	B	175	ASP
1	B	63	LYS
1	A	52	PRO

5.3.2 Protein sidechains [i](#)

In the following table, the Percentiles column shows the percent sidechain outliers of the chain as a percentile score with respect to all X-ray entries followed by that with respect to entries of similar resolution.

The Analysed column shows the number of residues for which the sidechain conformation was analysed, and the total number of residues.

Mol	Chain	Analysed	Rotameric	Outliers	Percentiles	
1	A	372/373 (100%)	357 (96%)	15 (4%)	31	49
1	B	372/373 (100%)	360 (97%)	12 (3%)	39	59
All	All	744/746 (100%)	717 (96%)	27 (4%)	35	54

5 of 27 residues with a non-rotameric sidechain are listed below:

Mol	Chain	Res	Type
1	A	396	ASN
1	B	129	THR
1	B	383	ARG
1	B	99	THR
1	B	155	LYS

Sometimes sidechains can be flipped to improve hydrogen bonding and reduce clashes. 5 of 25 such sidechains are listed below:

Mol	Chain	Res	Type
1	B	31	HIS
1	B	88	HIS
1	B	399	HIS
1	B	64	ASN
1	B	138	GLN

5.3.3 RNA [i](#)

There are no RNA molecules in this entry.

5.4 Non-standard residues in protein, DNA, RNA chains [i](#)

There are no non-standard protein/DNA/RNA residues in this entry.

5.5 Carbohydrates [i](#)

There are no monosaccharides in this entry.

5.6 Ligand geometry [i](#)

Of 16 ligands modelled in this entry, 4 are monoatomic - leaving 12 for Mogul analysis.

In the following table, the Counts columns list the number of bonds (or angles) for which Mogul statistics could be retrieved, the number of bonds (or angles) that are observed in the model and the number of bonds (or angles) that are defined in the Chemical Component Dictionary. The Link column lists molecule types, if any, to which the group is linked. The Z score for a bond length (or angle) is the number of standard deviations the observed value is removed from the expected value. A bond length (or angle) with $|Z| > 2$ is considered an outlier worth inspection. RMSZ is the root-mean-square of all Z scores of the bond lengths (or angles).

Mol	Type	Chain	Res	Link	Bond lengths			Bond angles		
					Counts	RMSZ	# Z > 2	Counts	RMSZ	# Z > 2
4	SO4	A	437	-	4,4,4	0.28	0	6,6,6	0.05	0
6	NAG	B	450	1	14,14,15	0.65	0	17,19,21	0.82	1 (5%)
4	SO4	B	435	-	4,4,4	0.28	0	6,6,6	0.07	0
4	SO4	B	437	-	4,4,4	0.28	0	6,6,6	0.06	0
4	SO4	A	435	-	4,4,4	0.25	0	6,6,6	0.07	0
5	NDG	A	453	-	15,15,15	0.53	0	21,21,21	0.76	0
6	NAG	B	451	1	14,14,15	0.48	0	17,19,21	0.69	0
5	NDG	A	450	-	15,15,15	0.48	0	21,21,21	0.85	1 (4%)
6	NAG	A	451	1	14,14,15	0.52	0	17,19,21	0.69	0
6	NAG	A	452	1	14,14,15	0.66	0	17,19,21	0.78	1 (5%)
6	NAG	B	452	1	14,14,15	0.69	0	17,19,21	0.79	0
6	NAG	B	453	1	14,14,15	0.74	0	17,19,21	0.73	0

In the following table, the Chirals column lists the number of chiral outliers, the number of chiral centers analysed, the number of these observed in the model and the number defined in the Chemical Component Dictionary. Similar counts are reported in the Torsion and Rings columns. '-' means no outliers of that kind were identified.

Mol	Type	Chain	Res	Link	Chirals	Torsions	Rings
6	NAG	B	450	1	-	4/6/23/26	0/1/1/1
5	NDG	A	453	-	-	4/6/26/26	0/1/1/1

Continued on next page...

Continued from previous page...

Mol	Type	Chain	Res	Link	Chirals	Torsions	Rings
6	NAG	B	451	1	-	0/6/23/26	0/1/1/1
5	NDG	A	450	-	-	5/6/26/26	0/1/1/1
6	NAG	A	452	1	-	4/6/23/26	0/1/1/1
6	NAG	A	451	1	-	0/6/23/26	0/1/1/1
6	NAG	B	452	1	-	5/6/23/26	0/1/1/1
6	NAG	B	453	1	-	2/6/23/26	0/1/1/1

There are no bond length outliers.

All (3) bond angle outliers are listed below:

Mol	Chain	Res	Type	Atoms	Z	Observed(°)	Ideal(°)
6	A	452	NAG	C2-N2-C7	-2.19	119.78	122.90
5	A	450	NDG	O5-C1-C2	2.19	111.72	109.52
6	B	450	NAG	C2-N2-C7	-2.17	119.82	122.90

There are no chirality outliers.

5 of 24 torsion outliers are listed below:

Mol	Chain	Res	Type	Atoms
5	A	450	NDG	C1-C2-N2-C7
5	A	450	NDG	C8-C7-N2-C2
5	A	450	NDG	O7-C7-N2-C2
5	A	453	NDG	C8-C7-N2-C2
5	A	453	NDG	O7-C7-N2-C2

There are no ring outliers.

4 monomers are involved in 8 short contacts:

Mol	Chain	Res	Type	Clashes	Symm-Clashes
6	B	450	NAG	1	0
5	A	453	NDG	2	0
5	A	450	NDG	3	0
6	B	452	NAG	2	0

5.7 Other polymers [i](#)

There are no such residues in this entry.

5.8 Polymer linkage issues

There are no chain breaks in this entry.

6 Fit of model and data [i](#)

6.1 Protein, DNA and RNA chains [i](#)

In the following table, the column labelled '#RSRZ > 2' contains the number (and percentage) of RSRZ outliers, followed by percent RSRZ outliers for the chain as percentile scores relative to all X-ray entries and entries of similar resolution. The OWAB column contains the minimum, median, 95th percentile and maximum values of the occupancy-weighted average B-factor per residue. The column labelled 'Q < 0.9' lists the number of (and percentage) of residues with an average occupancy less than 0.9.

Mol	Chain	Analysed	<RSRZ>	#RSRZ>2	OWAB(Å ²)	Q<0.9
1	A	424/424 (100%)	-0.83	0 100 100	13, 24, 41, 73	0
1	B	424/424 (100%)	-0.83	0 100 100	13, 25, 40, 72	0
All	All	848/848 (100%)	-0.83	0 100 100	13, 25, 41, 73	0

There are no RSRZ outliers to report.

6.2 Non-standard residues in protein, DNA, RNA chains [i](#)

There are no non-standard protein/DNA/RNA residues in this entry.

6.3 Carbohydrates [i](#)

There are no monosaccharides in this entry.

6.4 Ligands [i](#)

In the following table, the Atoms column lists the number of modelled atoms in the group and the number defined in the chemical component dictionary. The B-factors column lists the minimum, median, 95th percentile and maximum values of B factors of atoms in the group. The column labelled 'Q < 0.9' lists the number of atoms with occupancy less than 0.9.

Mol	Type	Chain	Res	Atoms	RSCC	RSR	B-factors(Å ²)	Q<0.9
5	NDG	A	453	15/15	0.94	0.15	71,79,81,82	0
4	SO4	A	437	5/5	0.95	0.20	109,110,110,112	0
6	NAG	B	453	14/15	0.96	0.11	61,64,66,66	0
6	NAG	B	452	14/15	0.97	0.09	44,47,50,51	0
4	SO4	B	437	5/5	0.97	0.15	102,102,102,103	0
6	NAG	A	452	14/15	0.98	0.09	42,45,49,49	0
5	NDG	A	450	15/15	0.98	0.10	50,54,54,54	0

Continued on next page...

Continued from previous page...

Mol	Type	Chain	Res	Atoms	RSCC	RSR	B-factors(\AA^2)	Q<0.9
4	SO4	A	435	5/5	0.98	0.12	72,73,74,74	0
6	NAG	B	450	14/15	0.99	0.11	40,43,45,46	0
6	NAG	B	451	14/15	0.99	0.09	31,35,39,43	0
6	NAG	A	451	14/15	0.99	0.09	30,35,40,42	0
4	SO4	B	435	5/5	0.99	0.11	69,70,71,71	0
2	FE	A	433	1/1	1.00	0.12	22,22,22,22	0
2	FE	B	433	1/1	1.00	0.12	27,27,27,27	0
3	ZN	A	434	1/1	1.00	0.13	16,16,16,16	0
3	ZN	B	434	1/1	1.00	0.13	20,20,20,20	0

6.5 Other polymers [\(i\)](#)

There are no such residues in this entry.