



# Full wwPDB X-ray Structure Validation Report ⓘ

May 13, 2020 – 01:49 am BST

PDB ID : 3QAK  
Title : Agonist bound structure of the human adenosine A2a receptor  
Authors : Xu, F.; Wu, H.; Katritch, V.; Han, G.W.; Cherezov, V.; Stevens, R.; GPCR Network (GPCR)  
Deposited on : 2011-01-11  
Resolution : 2.71 Å(reported)

This is a Full wwPDB X-ray Structure Validation Report for a publicly released PDB entry.

We welcome your comments at [validation@mail.wwpdb.org](mailto:validation@mail.wwpdb.org)

A user guide is available at

<https://www.wwpdb.org/validation/2017/XrayValidationReportHelp>

with specific help available everywhere you see the ⓘ symbol.

---

The following versions of software and data (see [references ⓘ](#)) were used in the production of this report:

MolProbity : 4.02b-467  
Mogul : 1.8.5 (274361), CSD as541be (2020)  
Xtriage (Phenix) : 1.13  
EDS : 2.11  
buster-report : 1.1.7 (2018)  
Percentile statistics : 20191225.v01 (using entries in the PDB archive December 25th 2019)  
Refmac : 5.8.0158  
CCP4 : 7.0.044 (Gargrove)  
Ideal geometry (proteins) : Engh & Huber (2001)  
Ideal geometry (DNA, RNA) : Parkinson et al. (1996)  
Validation Pipeline (wwPDB-VP) : 2.11

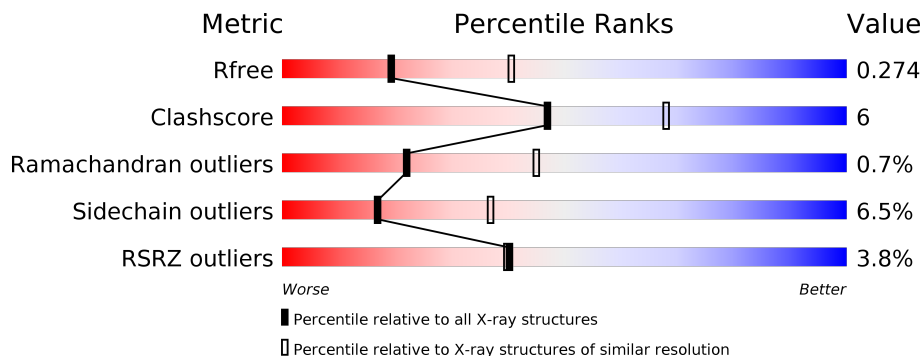
# 1 Overall quality at a glance

The following experimental techniques were used to determine the structure:

*X-RAY DIFFRACTION*

The reported resolution of this entry is 2.71 Å.

Percentile scores (ranging between 0-100) for global validation metrics of the entry are shown in the following graphic. The table shows the number of entries on which the scores are based.



Metric	Whole archive (#Entries)	Similar resolution (#Entries, resolution range(Å))
$R_{free}$	130704	3359 (2.74-2.70)
Clashscore	141614	3686 (2.74-2.70)
Ramachandran outliers	138981	3622 (2.74-2.70)
Sidechain outliers	138945	3623 (2.74-2.70)
RSRZ outliers	127900	3276 (2.74-2.70)

The table below summarises the geometric issues observed across the polymeric chains and their fit to the electron density. The red, orange, yellow and green segments on the lower bar indicate the fraction of residues that contain outliers for  $\geq 3$ , 2, 1 and 0 types of geometric quality criteria respectively. A grey segment represents the fraction of residues that are not modelled. The numeric value for each fraction is indicated below the corresponding segment, with a dot representing fractions  $\leq 5\%$ . The upper red bar (where present) indicates the fraction of residues that have poor fit to the electron density. The numeric value is given above the bar.

Mol	Chain	Length	Quality of chain
1	A	488	

## 2 Entry composition [i](#)

There are 4 unique types of molecules in this entry. The entry contains 3568 atoms, of which 0 are hydrogens and 0 are deuteriums.

In the tables below, the ZeroOcc column contains the number of atoms modelled with zero occupancy, the AltConf column contains the number of residues with at least one atom in alternate conformation and the Trace column contains the number of residues modelled with at most 2 atoms.

- Molecule 1 is a protein called Adenosine receptor A2a,lysozyme chimera.

Mol	Chain	Residues	Atoms					ZeroOcc	AltConf	Trace
			Total	C	N	O	S			
1	A	444	3480	2268	597	591	24	0	0	0

There are 28 discrepancies between the modelled and reference sequences:

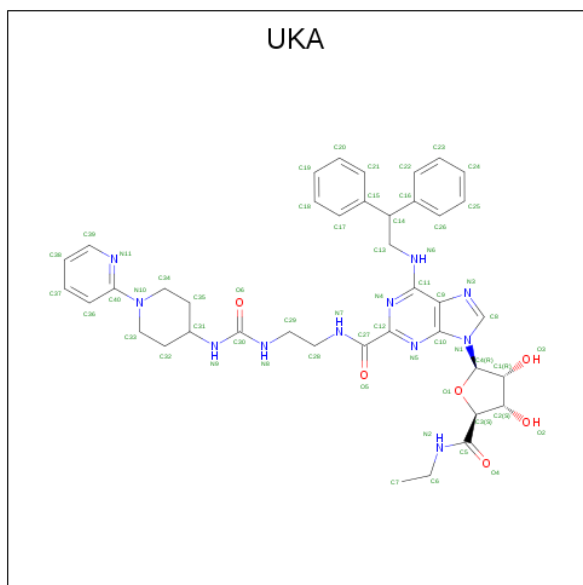
Chain	Residue	Modelled	Actual	Comment	Reference
A	-14	ASP	-	EXPRESSION TAG	UNP P29274
A	-13	TYR	-	EXPRESSION TAG	UNP P29274
A	-12	LYS	-	EXPRESSION TAG	UNP P29274
A	-11	ASP	-	EXPRESSION TAG	UNP P29274
A	-10	ASP	-	EXPRESSION TAG	UNP P29274
A	-9	ASP	-	EXPRESSION TAG	UNP P29274
A	-8	ASP	-	EXPRESSION TAG	UNP P29274
A	-7	ALA	-	EXPRESSION TAG	UNP P29274
A	-6	MET	-	EXPRESSION TAG	UNP P29274
A	-5	GLY	-	EXPRESSION TAG	UNP P29274
A	-4	GLN	-	EXPRESSION TAG	UNP P29274
A	-3	PRO	-	EXPRESSION TAG	UNP P29274
A	-2	VAL	-	EXPRESSION TAG	UNP P29274
A	-1	GLY	-	EXPRESSION TAG	UNP P29274
A	0	ALA	-	EXPRESSION TAG	UNP P29274
A	1	PRO	-	EXPRESSION TAG	UNP P29274
A	1054	THR	CYS	engineered mutation	UNP P00720
A	1097	ALA	CYS	engineered mutation	UNP P00720
A	317	HIS	-	EXPRESSION TAG	UNP P29274
A	318	HIS	-	EXPRESSION TAG	UNP P29274
A	319	HIS	-	EXPRESSION TAG	UNP P29274
A	320	HIS	-	EXPRESSION TAG	UNP P29274
A	321	HIS	-	EXPRESSION TAG	UNP P29274
A	322	HIS	-	EXPRESSION TAG	UNP P29274
A	323	HIS	-	EXPRESSION TAG	UNP P29274
A	324	HIS	-	EXPRESSION TAG	UNP P29274
A	325	HIS	-	EXPRESSION TAG	UNP P29274

*Continued on next page...*

Continued from previous page...

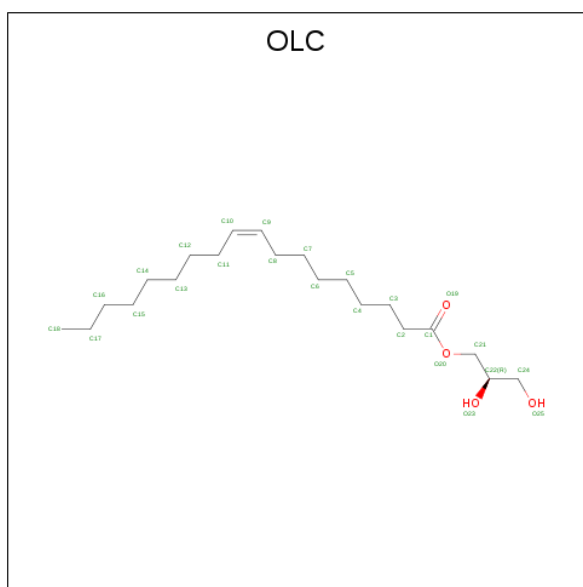
Chain	Residue	Modelled	Actual	Comment	Reference
A	326	HIS	-	EXPRESSION TAG	UNP P29274

- Molecule 2 is 6-(2,2-diphenylethylamino)-9-[(2R,3R,4S,5S)-5-(ethylcarbamoyl)-3,4-dihydroxy-oxolan-2-yl]-N-[2-[(1-pyridin-2-yl)piperidin-4-yl]carbamoylamino]ethyl]purine-2-carboxamide (three-letter code: UKA) (formula: C<sub>40</sub>H<sub>47</sub>N<sub>11</sub>O<sub>6</sub>).



Mol	Chain	Residues	Atoms			ZeroOcc	AltConf	
			Total	C	N			O
2	A	1	57	40	11	6	0	0

- Molecule 3 is (2R)-2,3-dihydroxypropyl (9Z)-octadec-9-enoate (three-letter code: OLC) (formula: C<sub>21</sub>H<sub>40</sub>O<sub>4</sub>).



Mol	Chain	Residues	Atoms	ZeroOcc	AltConf
3	A	1	Total C O 12 8 4	0	0
3	A	1	Total C O 13 9 4	0	0

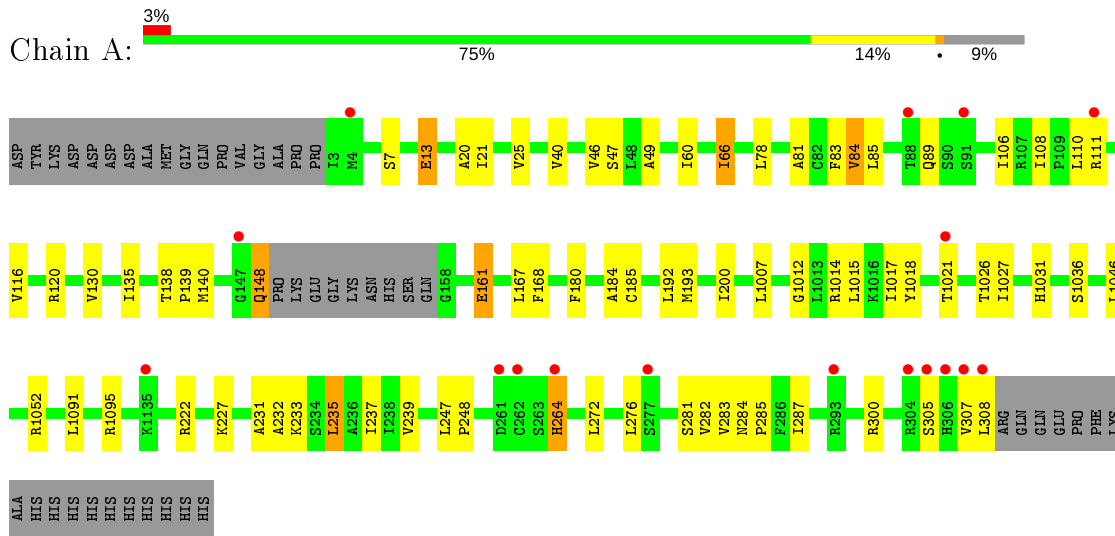
- Molecule 4 is water.

Mol	Chain	Residues	Atoms	ZeroOcc	AltConf
4	A	6	Total O 6 6	0	0

### 3 Residue-property plots [i](#)

These plots are drawn for all protein, RNA and DNA chains in the entry. The first graphic for a chain summarises the proportions of the various outlier classes displayed in the second graphic. The second graphic shows the sequence view annotated by issues in geometry and electron density. Residues are color-coded according to the number of geometric quality criteria for which they contain at least one outlier: green = 0, yellow = 1, orange = 2 and red = 3 or more. A red dot above a residue indicates a poor fit to the electron density ( $RSRZ > 2$ ). Stretches of 2 or more consecutive residues without any outlier are shown as a green connector. Residues present in the sample, but not in the model, are shown in grey.

- Molecule 1: Adenosine receptor A2a,lysozyme chimera



## 4 Data and refinement statistics

Property	Value	Source
Space group	P 1 21 1	Depositor
Cell constants a, b, c, $\alpha$ , $\beta$ , $\gamma$	47.84Å 78.94Å 86.58Å 90.00° 100.54° 90.00°	Depositor
Resolution (Å)	29.61 – 2.71 29.61 – 2.71	Depositor EDS
% Data completeness (in resolution range)	96.3 (29.61-2.71) 96.4 (29.61-2.71)	Depositor EDS
$R_{merge}$	0.13	Depositor
$R_{sym}$	(Not available)	Depositor
$\langle I/\sigma(I) \rangle$ <sup>1</sup>	1.24 (at 2.72Å)	Xtrriage
Refinement program	REFMAC 5.5.0109	Depositor
R, $R_{free}$	0.217 , 0.273 0.218 , 0.274	Depositor DCC
$R_{free}$ test set	840 reflections (5.06%)	wwPDB-VP
Wilson B-factor (Å <sup>2</sup> )	70.4	Xtrriage
Anisotropy	0.031	Xtrriage
Bulk solvent $k_{sol}$ (e/Å <sup>3</sup> ), $B_{sol}$ (Å <sup>2</sup> )	0.32 , 41.5	EDS
L-test for twinning <sup>2</sup>	$\langle  L  \rangle = 0.49$ , $\langle L^2 \rangle = 0.32$	Xtrriage
Estimated twinning fraction	No twinning to report.	Xtrriage
$F_o, F_c$ correlation	0.94	EDS
Total number of atoms	3568	wwPDB-VP
Average B, all atoms (Å <sup>2</sup> )	63.0	wwPDB-VP

Xtrriage's analysis on translational NCS is as follows: *The largest off-origin peak in the Patterson function is 7.69% of the height of the origin peak. No significant pseudotranslation is detected.*

<sup>1</sup>Intensities estimated from amplitudes.

<sup>2</sup>Theoretical values of  $\langle |L| \rangle$ ,  $\langle L^2 \rangle$  for acentric reflections are 0.5, 0.333 respectively for untwinned datasets, and 0.375, 0.2 for perfectly twinned datasets.

## 5 Model quality [i](#)

### 5.1 Standard geometry [i](#)

Bond lengths and bond angles in the following residue types are not validated in this section: OLC, UKA

The Z score for a bond length (or angle) is the number of standard deviations the observed value is removed from the expected value. A bond length (or angle) with  $|Z| > 5$  is considered an outlier worth inspection. RMSZ is the root-mean-square of all Z scores of the bond lengths (or angles).

Mol	Chain	Bond lengths		Bond angles	
		RMSZ	# Z  >5	RMSZ	# Z  >5
1	A	0.54	0/3555	0.63	0/4831

There are no bond length outliers.

There are no bond angle outliers.

There are no chirality outliers.

There are no planarity outliers.

### 5.2 Too-close contacts [i](#)

In the following table, the Non-H and H(model) columns list the number of non-hydrogen atoms and hydrogen atoms in the chain respectively. The H(added) column lists the number of hydrogen atoms added and optimized by MolProbity. The Clashes column lists the number of clashes within the asymmetric unit, whereas Symm-Clashes lists symmetry related clashes.

Mol	Chain	Non-H	H(model)	H(added)	Clashes	Symm-Clashes
1	A	3480	0	3578	45	0
2	A	57	0	47	0	0
3	A	25	0	28	1	0
4	A	6	0	0	0	0
All	All	3568	0	3653	45	0

The all-atom clashscore is defined as the number of clashes found per 1000 atoms (including hydrogen atoms). The all-atom clashscore for this structure is 6.

All (45) close contacts within the same asymmetric unit are listed below, sorted by their clash magnitude.



Atom-1	Atom-2	Interatomic distance (Å)	Clash overlap (Å)
1:A:200:ILE:HD12	1:A:235:LEU:CD2	2.05	0.86
1:A:282:VAL:HG23	1:A:283:VAL:HG13	1.65	0.78
1:A:200:ILE:HD12	1:A:235:LEU:HD23	1.68	0.74
1:A:89:GLN:OE1	1:A:185:CYS:HB3	1.88	0.74
1:A:66:ILE:HD11	1:A:81:ALA:HA	1.76	0.68
1:A:81:ALA:O	1:A:84:VAL:HG13	1.97	0.65
1:A:1014:ARG:HG3	1:A:1018:TYR:CE2	2.33	0.63
1:A:66:ILE:CG2	1:A:66:ILE:O	2.48	0.62
1:A:66:ILE:O	1:A:66:ILE:HG22	2.00	0.61
1:A:40:VAL:HG11	1:A:116:VAL:HG12	1.80	0.61
1:A:237:ILE:HG21	1:A:287:ILE:HG21	1.83	0.60
1:A:21:ILE:O	1:A:25:VAL:HG23	2.05	0.56
1:A:46:VAL:O	1:A:49:ALA:HB3	2.05	0.55
1:A:110:LEU:HD11	1:A:1012:GLY:HA3	1.89	0.55
1:A:282:VAL:CG2	1:A:283:VAL:HG13	2.36	0.54
1:A:200:ILE:HD12	1:A:235:LEU:HD21	1.85	0.54
1:A:307:VAL:HG12	1:A:308:LEU:HD12	1.89	0.53
1:A:180:PHE:O	1:A:184:ALA:HB3	2.09	0.53
1:A:66:ILE:O	1:A:167:LEU:HA	2.10	0.52
1:A:161:GLU:HG3	1:A:161:GLU:O	2.09	0.51
1:A:282:VAL:HG23	1:A:283:VAL:CG1	2.39	0.49
1:A:284:ASN:O	1:A:285:PRO:C	2.50	0.49
1:A:135:ILE:HD13	1:A:185:CYS:SG	2.53	0.49
1:A:1026:THR:HG23	1:A:1031:HIS:C	2.35	0.47
1:A:148:GLN:HA	1:A:148:GLN:HE21	1.80	0.46
1:A:264:HIS:ND1	1:A:264:HIS:N	2.63	0.46
1:A:247:LEU:O	1:A:248:PRO:C	2.52	0.45
1:A:200:ILE:HG22	1:A:232:ALA:HB2	2.00	0.44
1:A:282:VAL:HG23	1:A:283:VAL:N	2.31	0.44
1:A:1091:LEU:HD22	1:A:1095:ARG:HB3	2.00	0.44
1:A:138:THR:HB	1:A:139:PRO:HD3	1.99	0.44
1:A:13:GLU:CG	1:A:60:ILE:HG23	2.49	0.43
1:A:85:LEU:O	1:A:89:GLN:HB2	2.17	0.43
1:A:66:ILE:CG2	1:A:168:PHE:HB2	2.48	0.43
1:A:20:ALA:CB	1:A:282:VAL:HB	2.48	0.43
1:A:66:ILE:CD1	1:A:84:VAL:HG11	2.48	0.43
1:A:111:ARG:HH22	1:A:1015:LEU:H	1.67	0.43
1:A:89:GLN:OE1	1:A:185:CYS:CB	2.63	0.43
1:A:272:LEU:HD13	3:A:1202:OLC:H5	2.01	0.42
1:A:66:ILE:HG21	1:A:168:PHE:HB2	2.00	0.42
1:A:66:ILE:HD13	1:A:66:ILE:HG21	1.81	0.41
1:A:193:MET:HB3	1:A:239:VAL:HG22	2.03	0.41

*Continued on next page...*

Continued from previous page...

Atom-1	Atom-2	Interatomic distance (Å)	Clash overlap (Å)
1:A:1046:LEU:O	1:A:1046:LEU:HD12	2.21	0.40
1:A:106:ILE:HD11	1:A:231:ALA:CB	2.52	0.40
1:A:1017:ILE:HG12	1:A:1027:ILE:HD12	2.03	0.40

There are no symmetry-related clashes.

## 5.3 Torsion angles [i](#)

### 5.3.1 Protein backbone [i](#)

In the following table, the Percentiles column shows the percent Ramachandran outliers of the chain as a percentile score with respect to all X-ray entries followed by that with respect to entries of similar resolution.

The Analysed column shows the number of residues for which the backbone conformation was analysed, and the total number of residues.

Mol	Chain	Analysed	Favoured	Allowed	Outliers	Percentiles
1	A	440/488 (90%)	414 (94%)	23 (5%)	3 (1%)	22 45

All (3) Ramachandran outliers are listed below:

Mol	Chain	Res	Type
1	A	281	SER
1	A	305	SER
1	A	66	ILE

### 5.3.2 Protein sidechains [i](#)

In the following table, the Percentiles column shows the percent sidechain outliers of the chain as a percentile score with respect to all X-ray entries followed by that with respect to entries of similar resolution.

The Analysed column shows the number of residues for which the sidechain conformation was analysed, and the total number of residues.

Mol	Chain	Analysed	Rotameric	Outliers	Percentiles
1	A	369/409 (90%)	345 (94%)	24 (6%)	17 37

All (24) residues with a non-rotameric sidechain are listed below:

Mol	Chain	Res	Type
1	A	7	SER
1	A	13	GLU
1	A	47	SER
1	A	78	LEU
1	A	83	PHE
1	A	84	VAL
1	A	108	ILE
1	A	120	ARG
1	A	130	VAL
1	A	140	MET
1	A	148	GLN
1	A	161	GLU
1	A	192	LEU
1	A	1007	LEU
1	A	1021	THR
1	A	1036	SER
1	A	1052	ARG
1	A	222	ARG
1	A	227	LYS
1	A	233	LYS
1	A	235	LEU
1	A	264	HIS
1	A	276	LEU
1	A	300	ARG

Some sidechains can be flipped to improve hydrogen bonding and reduce clashes. All (2) such sidechains are listed below:

Mol	Chain	Res	Type
1	A	148	GLN
1	A	181	ASN

### 5.3.3 RNA [i](#)

There are no RNA molecules in this entry.

## 5.4 Non-standard residues in protein, DNA, RNA chains [i](#)

There are no non-standard protein/DNA/RNA residues in this entry.

## 5.5 Carbohydrates [i](#)

There are no carbohydrates in this entry.

## 5.6 Ligand geometry [i](#)

3 ligands are modelled in this entry.

In the following table, the Counts columns list the number of bonds (or angles) for which Mogul statistics could be retrieved, the number of bonds (or angles) that are observed in the model and the number of bonds (or angles) that are defined in the Chemical Component Dictionary. The Link column lists molecule types, if any, to which the group is linked. The Z score for a bond length (or angle) is the number of standard deviations the observed value is removed from the expected value. A bond length (or angle) with  $|Z| > 2$  is considered an outlier worth inspection. RMSZ is the root-mean-square of all Z scores of the bond lengths (or angles).

Mol	Type	Chain	Res	Link	Bond lengths			Bond angles		
					Counts	RMSZ	# Z  > 2	Counts	RMSZ	# Z  > 2
2	UKA	A	1200	-	59,63,63	0.97	3 (5%)	71,87,87	1.66	13 (18%)
3	OLC	A	1202	-	12,12,24	1.42	1 (8%)	13,13,25	1.10	1 (7%)
3	OLC	A	1201	-	11,11,24	1.50	1 (9%)	12,12,25	1.12	2 (16%)

In the following table, the Chirals column lists the number of chiral outliers, the number of chiral centers analysed, the number of these observed in the model and the number defined in the Chemical Component Dictionary. Similar counts are reported in the Torsion and Rings columns. '-' means no outliers of that kind were identified.

Mol	Type	Chain	Res	Link	Chirals	Torsions	Rings
2	UKA	A	1200	-	-	3/37/69/69	0/7/7/7
3	OLC	A	1202	-	-	6/12/12/24	-
3	OLC	A	1201	-	-	4/11/11/24	-

All (5) bond length outliers are listed below:

Mol	Chain	Res	Type	Atoms	Z	Observed(Å)	Ideal(Å)
3	A	1201	OLC	O20-C1	4.72	1.47	1.33
3	A	1202	OLC	O20-C1	4.68	1.47	1.33
2	A	1200	UKA	C12-C27	-3.87	1.50	1.53
2	A	1200	UKA	C40-N10	2.62	1.42	1.37
2	A	1200	UKA	C16-C14	-2.14	1.47	1.53

All (16) bond angle outliers are listed below:

Mol	Chain	Res	Type	Atoms	Z	Observed(°)	Ideal(°)
2	A	1200	UKA	C39-N11-C40	4.79	123.19	116.86
2	A	1200	UKA	C12-N5-C10	4.50	120.69	115.08
2	A	1200	UKA	N5-C12-N4	-4.21	120.05	126.24
2	A	1200	UKA	C35-C34-N10	-3.66	103.57	111.10
2	A	1200	UKA	C27-C12-N5	3.64	121.82	117.28
2	A	1200	UKA	C11-N4-C12	3.15	122.00	116.06
2	A	1200	UKA	C36-C40-N11	-2.95	117.99	123.41
3	A	1201	OLC	O20-C1-C2	2.69	120.36	111.91
3	A	1202	OLC	O20-C1-C2	2.63	120.16	111.91
2	A	1200	UKA	C3-C5-N2	2.61	118.71	115.47
2	A	1200	UKA	C9-C11-N4	-2.57	118.67	120.81
2	A	1200	UKA	C12-C27-N7	-2.17	113.44	115.60
2	A	1200	UKA	C10-C9-N3	-2.14	107.17	109.40
3	A	1201	OLC	O20-C1-O19	-2.04	118.45	123.59
2	A	1200	UKA	C38-C39-N11	-2.03	120.11	123.43
2	A	1200	UKA	C1-C2-C3	2.03	104.00	101.64

There are no chirality outliers.

All (13) torsion outliers are listed below:

Mol	Chain	Res	Type	Atoms
2	A	1200	UKA	O1-C3-C5-N2
2	A	1200	UKA	N5-C12-C27-N7
3	A	1202	OLC	O20-C21-C22-C24
3	A	1202	OLC	O20-C21-C22-O23
3	A	1201	OLC	C21-C22-C24-O25
3	A	1202	OLC	C1-C2-C3-C4
3	A	1201	OLC	C1-C2-C3-C4
3	A	1201	OLC	O23-C22-C24-O25
3	A	1202	OLC	C2-C1-O20-C21
3	A	1202	OLC	O19-C1-O20-C21
2	A	1200	UKA	C14-C13-N6-C11
3	A	1202	OLC	C2-C3-C4-C5
3	A	1201	OLC	O20-C21-C22-C24

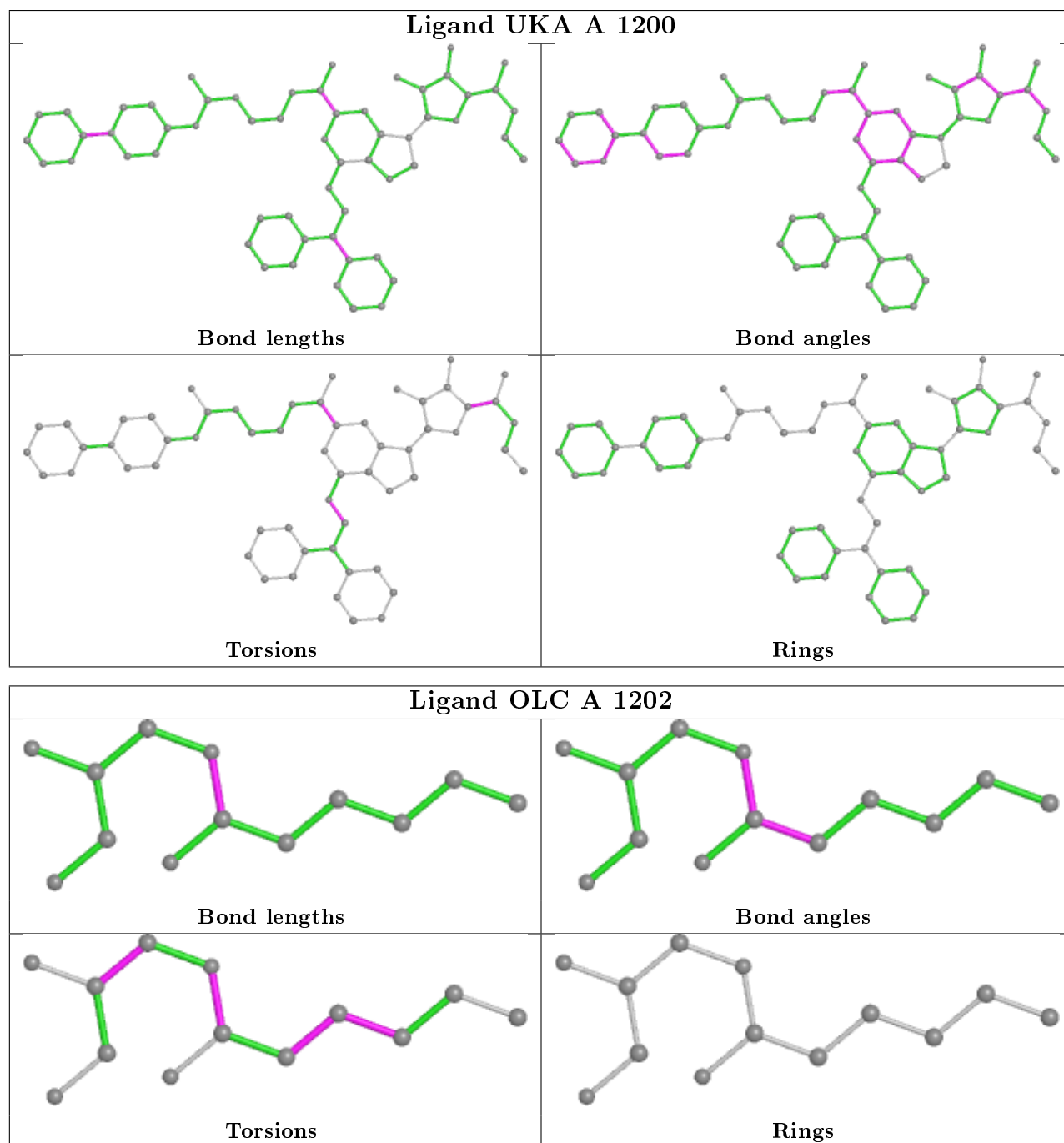
There are no ring outliers.

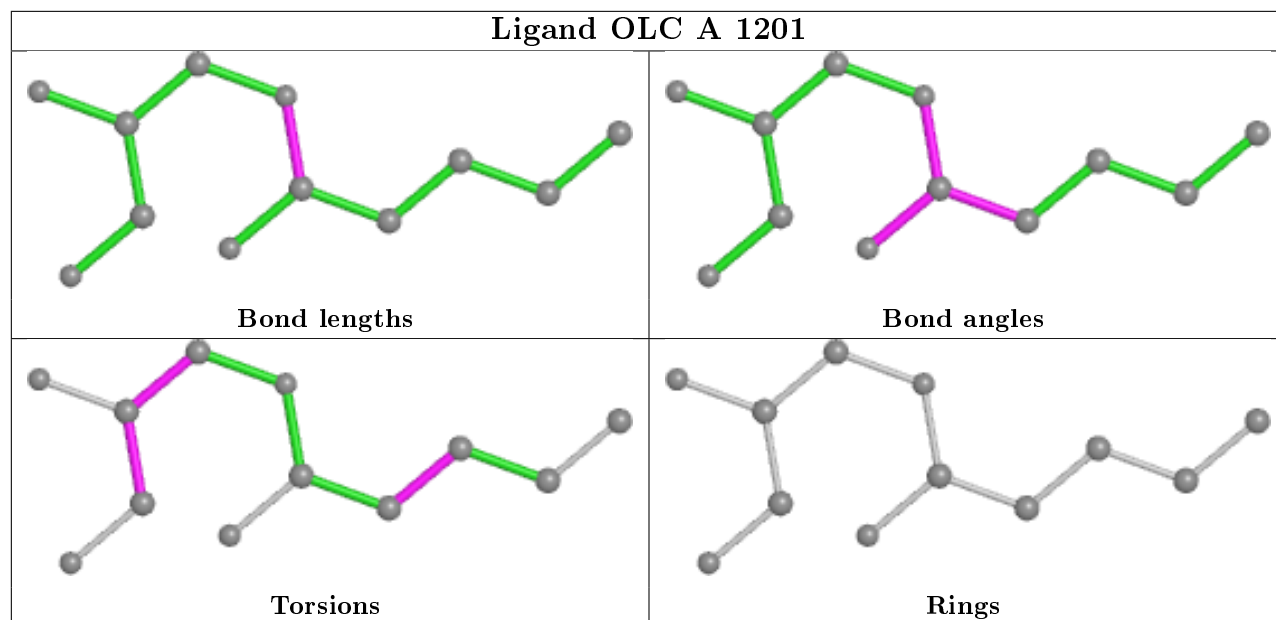
1 monomer is involved in 1 short contact:

Mol	Chain	Res	Type	Clashes	Symm-Clashes
3	A	1202	OLC	1	0

The following is a two-dimensional graphical depiction of Mogul quality analysis of bond lengths,

bond angles, torsion angles, and ring geometry for all instances of the Ligand of Interest. In addition, ligands with molecular weight > 250 and outliers as shown on the validation Tables will also be included. For torsion angles, if less than 5% of the Mogul distribution of torsion angles is within 10 degrees of the torsion angle in question, then that torsion angle is considered an outlier. Any bond that is central to one or more torsion angles identified as an outlier by Mogul will be highlighted in the graph. For rings, the root-mean-square deviation (RMSD) between the ring in question and similar rings identified by Mogul is calculated over all ring torsion angles. If the average RMSD is greater than 60 degrees and the minimal RMSD between the ring in question and any Mogul-identified rings is also greater than 60 degrees, then that ring is considered an outlier. The outliers are highlighted in purple. The color gray indicates Mogul did not find sufficient equivalents in the CSD to analyse the geometry.





## 5.7 Other polymers [i](#)

There are no such residues in this entry.

## 5.8 Polymer linkage issues [i](#)

There are no chain breaks in this entry.

## 6 Fit of model and data [i](#)

### 6.1 Protein, DNA and RNA chains [i](#)

In the following table, the column labelled ‘#RSRZ> 2’ contains the number (and percentage) of RSRZ outliers, followed by percent RSRZ outliers for the chain as percentile scores relative to all X-ray entries and entries of similar resolution. The OWAB column contains the minimum, median, 95<sup>th</sup> percentile and maximum values of the occupancy-weighted average B-factor per residue. The column labelled ‘Q< 0.9’ lists the number of (and percentage) of residues with an average occupancy less than 0.9.

Mol	Chain	Analysed	<RSRZ>	#RSRZ>2	OWAB(Å <sup>2</sup> )	Q<0.9
1	A	444/488 (90%)	-0.03	17 (3%) 40 40	43, 60, 85, 126	0

All (17) RSRZ outliers are listed below:

Mol	Chain	Res	Type	RSRZ
1	A	308	LEU	5.0
1	A	261	ASP	4.0
1	A	1021	THR	3.5
1	A	306	HIS	3.1
1	A	293	ARG	3.0
1	A	305	SER	3.0
1	A	307	VAL	2.9
1	A	1135	LYS	2.9
1	A	262	CYS	2.8
1	A	304	ARG	2.6
1	A	147	GLY	2.6
1	A	4	MET	2.3
1	A	264	HIS	2.3
1	A	91	SER	2.3
1	A	111	ARG	2.1
1	A	88	THR	2.1
1	A	277	SER	2.0

### 6.2 Non-standard residues in protein, DNA, RNA chains [i](#)

There are no non-standard protein/DNA/RNA residues in this entry.

### 6.3 Carbohydrates [i](#)

There are no carbohydrates in this entry.

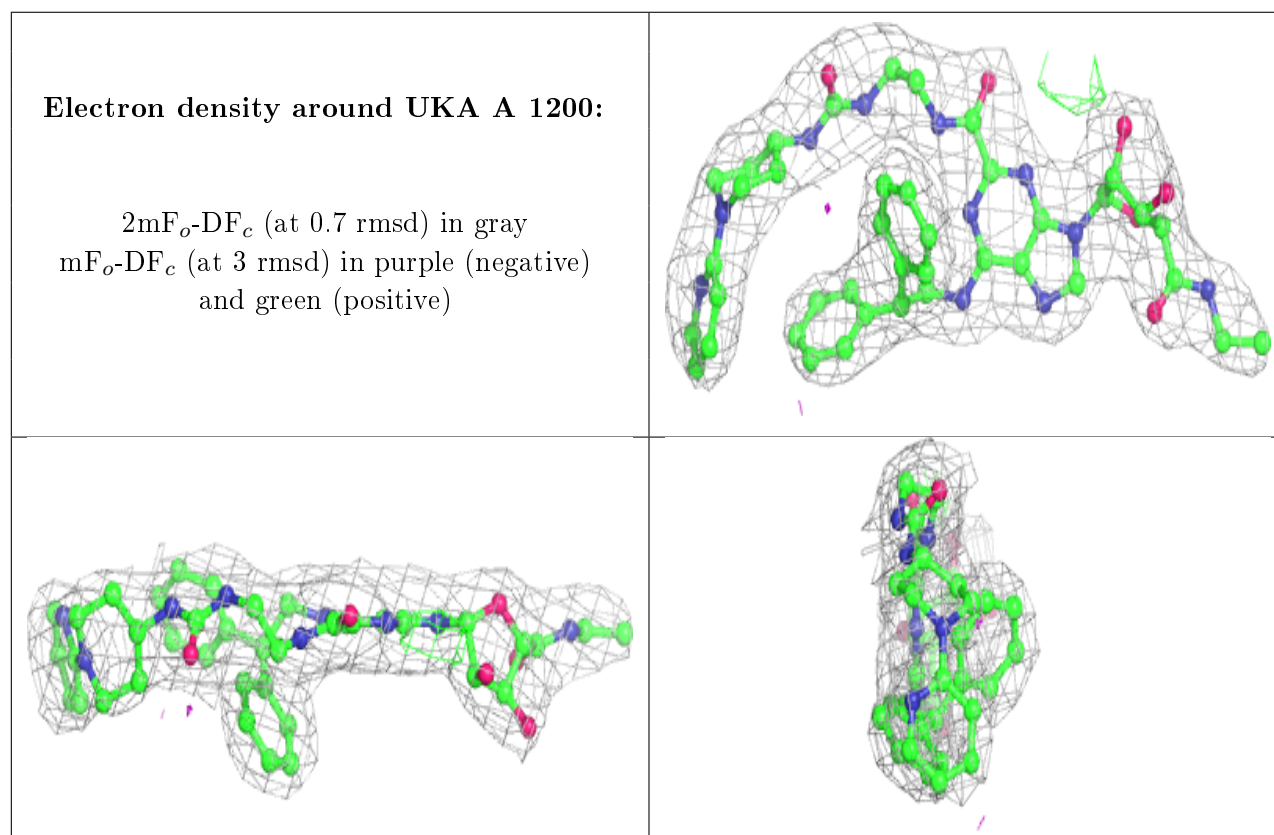


## 6.4 Ligands [i](#)

In the following table, the Atoms column lists the number of modelled atoms in the group and the number defined in the chemical component dictionary. The B-factors column lists the minimum, median, 95<sup>th</sup> percentile and maximum values of B factors of atoms in the group. The column labelled 'Q<0.9' lists the number of atoms with occupancy less than 0.9.

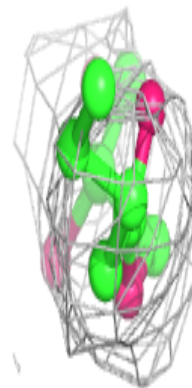
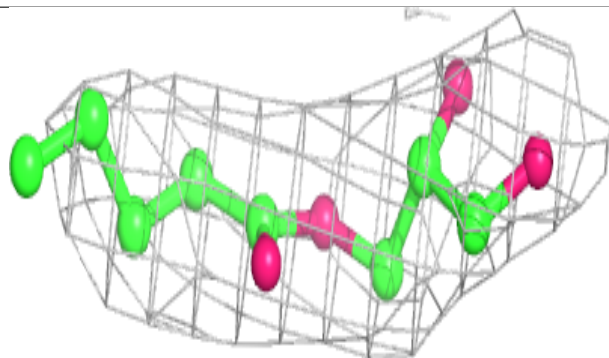
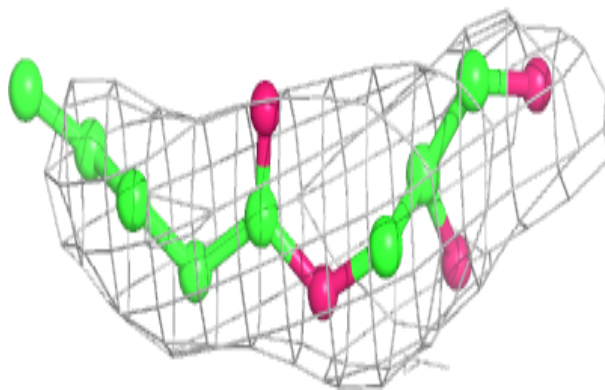
Mol	Type	Chain	Res	Atoms	RSCC	RSR	B-factors( $\text{\AA}^2$ )	Q<0.9
2	UKA	A	1200	57/57	0.85	0.25	42,47,71,72	0
3	OLC	A	1201	12/25	0.85	0.30	94,95,95,96	0
3	OLC	A	1202	13/25	0.89	0.30	69,70,71,72	0

The following is a graphical depiction of the model fit to experimental electron density of all instances of the Ligand of Interest. In addition, ligands with molecular weight > 250 and outliers as shown on the geometry validation Tables will also be included. Each fit is shown from different orientation to approximate a three-dimensional view.

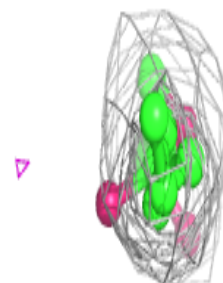
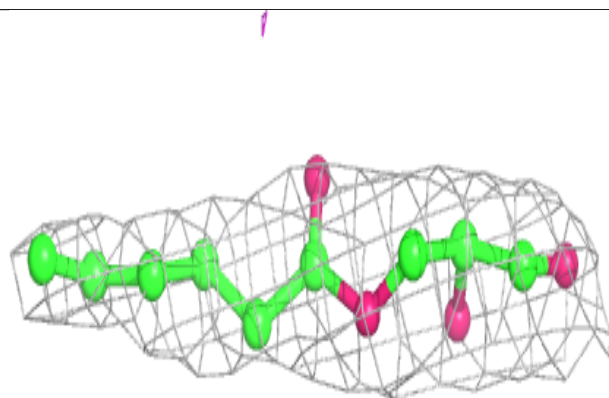
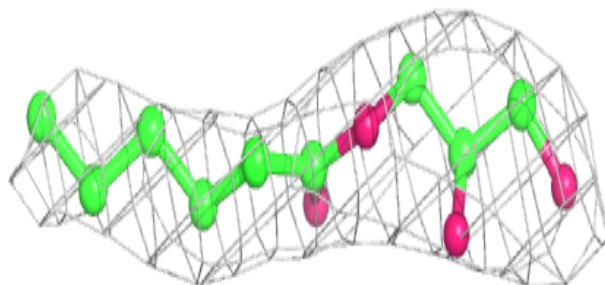


**Electron density around OLC A 1201:**

$2mF_o-DF_c$  (at 0.7 rmsd) in gray  
 $mF_o-DF_c$  (at 3 rmsd) in purple (negative)  
and green (positive)

**Electron density around OLC A 1202:**

$2mF_o-DF_c$  (at 0.7 rmsd) in gray  
 $mF_o-DF_c$  (at 3 rmsd) in purple (negative)  
and green (positive)



## 6.5 Other polymers [i](#)

There are no such residues in this entry.