



wwPDB X-ray Structure Validation Summary Report ⓘ

Sep 17, 2023 – 09:06 AM EDT

PDB ID : 4PFC
Title : Crystal structure of insulin degrading enzyme complexed with inhibitor
Authors : Wang, Y.; Guo, S.
Deposited on : 2014-04-28
Resolution : 2.21 Å(reported)

This is a wwPDB X-ray Structure Validation Summary Report for a publicly released PDB entry.

We welcome your comments at validation@mail.wwpdb.org

A user guide is available at

<https://www.wwpdb.org/validation/2017/XrayValidationReportHelp>

with specific help available everywhere you see the ⓘ symbol.

The types of validation reports are described at

<http://www.wwpdb.org/validation/2017/FAQs#types>.

The following versions of software and data (see [references ⓘ](#)) were used in the production of this report:

MolProbity : 4.02b-467
Mogul : 1.8.5 (274361), CSD as541be (2020)
Xtriage (Phenix) : 1.13
EDS : 2.35.1
buster-report : 1.1.7 (2018)
Percentile statistics : 20191225.v01 (using entries in the PDB archive December 25th 2019)
Refmac : 5.8.0158
CCP4 : 7.0.044 (Gargrove)
Ideal geometry (proteins) : Engh & Huber (2001)
Ideal geometry (DNA, RNA) : Parkinson et al. (1996)
Validation Pipeline (wwPDB-VP) : 2.35.1

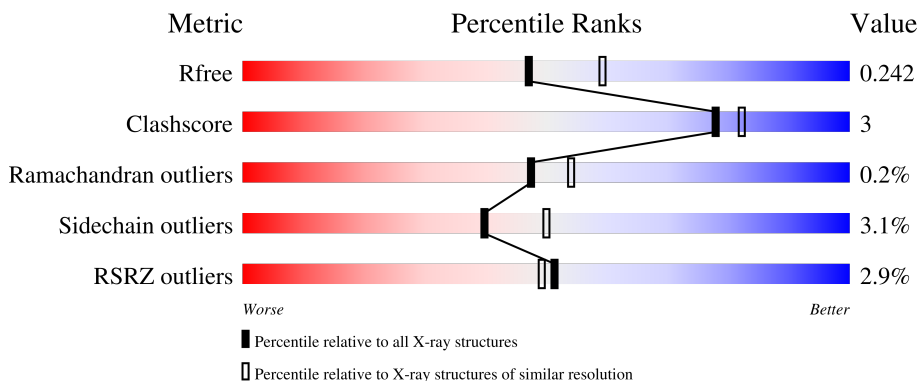
1 Overall quality at a glance

The following experimental techniques were used to determine the structure:

X-RAY DIFFRACTION


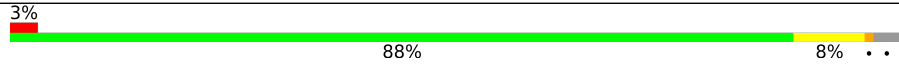
The reported resolution of this entry is 2.21 Å.

Percentile scores (ranging between 0-100) for global validation metrics of the entry are shown in the following graphic. The table shows the number of entries on which the scores are based.



Metric	Whole archive (#Entries)	Similar resolution (#Entries, resolution range(Å))
R_{free}	130704	5912 (2.24-2.20)
Clashscore	141614	6646 (2.24-2.20)
Ramachandran outliers	138981	6543 (2.24-2.20)
Sidechain outliers	138945	6544 (2.24-2.20)
RSRZ outliers	127900	5797 (2.24-2.20)

The table below summarises the geometric issues observed across the polymeric chains and their fit to the electron density. The red, orange, yellow and green segments of the lower bar indicate the fraction of residues that contain outliers for ≥ 3 , 2, 1 and 0 types of geometric quality criteria respectively. A grey segment represents the fraction of residues that are not modelled. The numeric value for each fraction is indicated below the corresponding segment, with a dot representing fractions $\leq 5\%$. The upper red bar (where present) indicates the fraction of residues that have poor fit to the electron density. The numeric value is given above the bar.

Mol	Chain	Length	Quality of chain
1	A	989	
1	B	989	

2 Entry composition [i](#)

There are 4 unique types of molecules in this entry. The entry contains 16390 atoms, of which 0 are hydrogens and 0 are deuteriums.

In the tables below, the ZeroOcc column contains the number of atoms modelled with zero occupancy, the AltConf column contains the number of residues with at least one atom in alternate conformation and the Trace column contains the number of residues modelled with at most 2 atoms.

- Molecule 1 is a protein called Insulin-degrading enzyme.

Mol	Chain	Residues	Atoms					ZeroOcc	AltConf	Trace
			Total	C	N	O	S			
1	A	959	7848	5054	1317	1455	22	0	1	0
1	B	956	7821	5038	1313	1448	22	0	0	0

There are 50 discrepancies between the modelled and reference sequences:

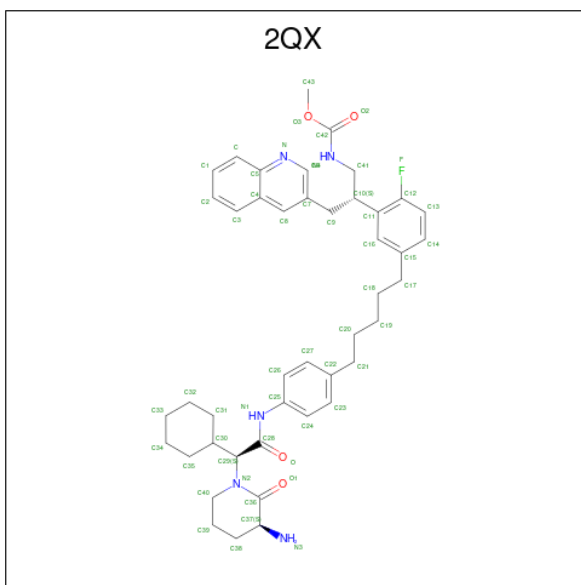
Chain	Residue	Modelled	Actual	Comment	Reference
A	31	MET	-	initiating methionine	UNP P14735
A	32	GLY	-	expression tag	UNP P14735
A	33	HIS	-	expression tag	UNP P14735
A	34	HIS	-	expression tag	UNP P14735
A	35	HIS	-	expression tag	UNP P14735
A	36	HIS	-	expression tag	UNP P14735
A	37	HIS	-	expression tag	UNP P14735
A	38	HIS	-	expression tag	UNP P14735
A	39	GLY	-	expression tag	UNP P14735
A	40	ARG	-	expression tag	UNP P14735
A	41	ALA	-	expression tag	UNP P14735
A	110	LEU	CYS	engineered mutation	UNP P14735
A	111	GLN	GLU	engineered mutation	UNP P14735
A	171	SER	CYS	engineered mutation	UNP P14735
A	178	ALA	CYS	engineered mutation	UNP P14735
A	257	VAL	CYS	engineered mutation	UNP P14735
A	414	LEU	CYS	engineered mutation	UNP P14735
A	573	ASN	CYS	engineered mutation	UNP P14735
A	590	SER	CYS	engineered mutation	UNP P14735
A	789	SER	CYS	engineered mutation	UNP P14735
A	812	ALA	CYS	engineered mutation	UNP P14735
A	819	ALA	CYS	engineered mutation	UNP P14735
A	904	SER	CYS	engineered mutation	UNP P14735
A	966	ASN	CYS	engineered mutation	UNP P14735
A	974	ALA	CYS	engineered mutation	UNP P14735

Continued on next page...

Continued from previous page...

Chain	Residue	Modelled	Actual	Comment	Reference
B	31	MET	-	initiating methionine	UNP P14735
B	32	GLY	-	expression tag	UNP P14735
B	33	HIS	-	expression tag	UNP P14735
B	34	HIS	-	expression tag	UNP P14735
B	35	HIS	-	expression tag	UNP P14735
B	36	HIS	-	expression tag	UNP P14735
B	37	HIS	-	expression tag	UNP P14735
B	38	HIS	-	expression tag	UNP P14735
B	39	GLY	-	expression tag	UNP P14735
B	40	ARG	-	expression tag	UNP P14735
B	41	ALA	-	expression tag	UNP P14735
B	110	LEU	CYS	engineered mutation	UNP P14735
B	111	GLN	GLU	engineered mutation	UNP P14735
B	171	SER	CYS	engineered mutation	UNP P14735
B	178	ALA	CYS	engineered mutation	UNP P14735
B	257	VAL	CYS	engineered mutation	UNP P14735
B	414	LEU	CYS	engineered mutation	UNP P14735
B	573	ASN	CYS	engineered mutation	UNP P14735
B	590	SER	CYS	engineered mutation	UNP P14735
B	789	SER	CYS	engineered mutation	UNP P14735
B	812	ALA	CYS	engineered mutation	UNP P14735
B	819	ALA	CYS	engineered mutation	UNP P14735
B	904	SER	CYS	engineered mutation	UNP P14735
B	966	ASN	CYS	engineered mutation	UNP P14735
B	974	ALA	CYS	engineered mutation	UNP P14735

- Molecule 2 is methyl [(2S)-2-(5-{5-[4-((2S)-2-[(3S)-3-amino-2-oxopiperidin-1-yl]-2-cyclohexylacetyl)amino)phenyl]pentyl}-2-fluorophenyl)-3-(quinolin-3-yl)propyl]carbamate (three-letter code: 2QX) (formula: C₄₄H₅₄FN₅O₄).



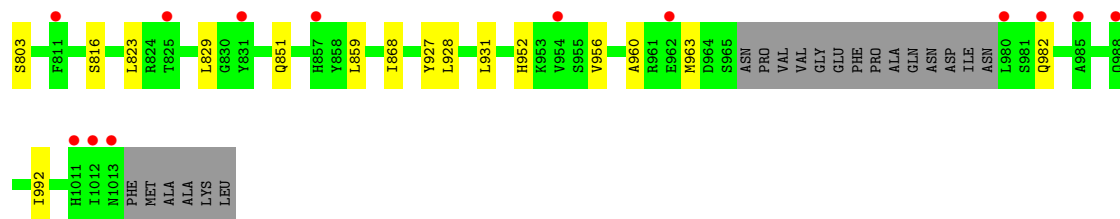
Mol	Chain	Residues	Atoms				ZeroOcc	AltConf	
2	A	1	Total	C	F	N	O	0	0
			54	44	1	5	4		
2	B	1	Total	C	F	N	O	0	0
			54	44	1	5	4		

- Molecule 3 is ZINC ION (three-letter code: ZN) (formula: Zn).

Mol	Chain	Residues	Atoms		ZeroOcc	AltConf
3	A	1	Total	Zn	0	0
			1	1		
3	B	1	Total	Zn	0	0
			1	1		

- Molecule 4 is water.

Mol	Chain	Residues	Atoms		ZeroOcc	AltConf
4	A	319	Total	O	0	0
			319	319		
4	B	292	Total	O	0	0
			292	292		



4 Data and refinement statistics

Property	Value	Source
Space group	P 1 21 1	Depositor
Cell constants a, b, c, α , β , γ	78.94Å 115.82Å 123.97Å 90.00° 97.89° 90.00°	Depositor
Resolution (Å)	19.93 – 2.21 19.93 – 2.21	Depositor EDS
% Data completeness (in resolution range)	98.2 (19.93-2.21) 98.2 (19.93-2.21)	Depositor EDS
R_{merge}	(Not available)	Depositor
R_{sym}	0.05	Depositor
$\langle I/\sigma(I) \rangle$ ¹	1.90 (at 2.21Å)	Xtrriage
Refinement program	BUSTER 2.11.5	Depositor
R, R_{free}	0.202 , 0.233 0.209 , 0.242	Depositor DCC
R_{free} test set	1008 reflections (0.93%)	wwPDB-VP
Wilson B-factor (Å ²)	40.7	Xtrriage
Anisotropy	0.340	Xtrriage
Bulk solvent k_{sol} (e/Å ³), B_{sol} (Å ²)	0.31 , 41.0	EDS
L-test for twinning ²	$\langle L \rangle = 0.49$, $\langle L^2 \rangle = 0.33$	Xtrriage
Estimated twinning fraction	No twinning to report.	Xtrriage
F_o, F_c correlation	0.95	EDS
Total number of atoms	16390	wwPDB-VP
Average B, all atoms (Å ²)	50.0	wwPDB-VP

Xtrriage's analysis on translational NCS is as follows: *The largest off-origin peak in the Patterson function is 3.40% of the height of the origin peak. No significant pseudotranslation is detected.*

¹Intensities estimated from amplitudes.

²Theoretical values of $\langle |L| \rangle$, $\langle L^2 \rangle$ for acentric reflections are 0.5, 0.333 respectively for untwinned datasets, and 0.375, 0.2 for perfectly twinned datasets.

5 Model quality

5.1 Standard geometry

Bond lengths and bond angles in the following residue types are not validated in this section: 2QX, ZN

The Z score for a bond length (or angle) is the number of standard deviations the observed value is removed from the expected value. A bond length (or angle) with $|Z| > 5$ is considered an outlier worth inspection. RMSZ is the root-mean-square of all Z scores of the bond lengths (or angles).

Mol	Chain	Bond lengths		Bond angles	
		RMSZ	# Z >5	RMSZ	# Z >5
1	A	0.51	0/8046	0.64	0/10884
1	B	0.50	0/8016	0.65	0/10843
All	All	0.51	0/16062	0.65	0/21727

There are no bond length outliers.

There are no bond angle outliers.

There are no chirality outliers.

There are no planarity outliers.

5.2 Too-close contacts

In the following table, the Non-H and H(model) columns list the number of non-hydrogen atoms and hydrogen atoms in the chain respectively. The H(added) column lists the number of hydrogen atoms added and optimized by MolProbity. The Clashes column lists the number of clashes within the asymmetric unit, whereas Symm-Clashes lists symmetry-related clashes.

Mol	Chain	Non-H	H(model)	H(added)	Clashes	Symm-Clashes
1	A	7848	0	7791	51	0
1	B	7821	0	7765	40	0
2	A	54	0	54	2	0
2	B	54	0	54	7	0
3	A	1	0	0	0	0
3	B	1	0	0	0	0
4	A	319	0	0	1	0
4	B	292	0	0	1	0
All	All	16390	0	15664	92	0

The all-atom clashscore is defined as the number of clashes found per 1000 atoms (including hydrogen atoms). The all-atom clashscore for this structure is 3.

The worst 5 of 92 close contacts within the same asymmetric unit are listed below, sorted by their clash magnitude.

Atom-1	Atom-2	Interatomic distance (Å)	Clash overlap (Å)
1:B:725:ILE:HG23	4:B:1270:HOH:O	1.75	0.87
1:A:294:GLN:H	1:A:297:HIS:HD2	1.30	0.77
1:A:643:LYS:HA	1:A:744:MET:HE1	1.74	0.70
1:B:294:GLN:H	1:B:297:HIS:HD2	1.43	0.64
1:B:201:LEU:HB3	2:B:1101:2QX:H10	1.80	0.63

There are no symmetry-related clashes.

5.3 Torsion angles [i](#)

5.3.1 Protein backbone [i](#)

In the following table, the Percentiles column shows the percent Ramachandran outliers of the chain as a percentile score with respect to all X-ray entries followed by that with respect to entries of similar resolution.

The Analysed column shows the number of residues for which the backbone conformation was analysed, and the total number of residues.

Mol	Chain	Analysed	Favoured	Allowed	Outliers	Percentiles
1	A	956/989 (97%)	925 (97%)	30 (3%)	1 (0%)	51 60
1	B	952/989 (96%)	913 (96%)	37 (4%)	2 (0%)	47 54
All	All	1908/1978 (96%)	1838 (96%)	67 (4%)	3 (0%)	47 54

All (3) Ramachandran outliers are listed below:

Mol	Chain	Res	Type
1	B	96	SER
1	B	452	ALA
1	A	978	ILE

5.3.2 Protein sidechains [i](#)

In the following table, the Percentiles column shows the percent sidechain outliers of the chain as a percentile score with respect to all X-ray entries followed by that with respect to entries of similar resolution.

The Analysed column shows the number of residues for which the sidechain conformation was

analysed, and the total number of residues.

Mol	Chain	Analysed	Rotameric	Outliers	Percentiles	
1	A	856/878 (98%)	826 (96%)	30 (4%)	36	44
1	B	852/878 (97%)	829 (97%)	23 (3%)	44	55
All	All	1708/1756 (97%)	1655 (97%)	53 (3%)	40	50

5 of 53 residues with a non-rotameric sidechain are listed below:

Mol	Chain	Res	Type
1	A	993	GLN
1	B	212	LYS
1	B	789	SER
1	A	997	GLU
1	B	176	GLU

Sometimes sidechains can be flipped to improve hydrogen bonding and reduce clashes. 5 of 16 such sidechains are listed below:

Mol	Chain	Res	Type
1	B	724	HIS
1	B	635	ASN
1	B	231	ASN
1	B	573	ASN
1	B	155	HIS

5.3.3 RNA [i](#)

There are no RNA molecules in this entry.

5.4 Non-standard residues in protein, DNA, RNA chains [i](#)

There are no non-standard protein/DNA/RNA residues in this entry.

5.5 Carbohydrates [i](#)

There are no monosaccharides in this entry.

5.6 Ligand geometry [i](#)

Of 4 ligands modelled in this entry, 2 are monoatomic - leaving 2 for Mogul analysis.

In the following table, the Counts columns list the number of bonds (or angles) for which Mogul statistics could be retrieved, the number of bonds (or angles) that are observed in the model and the number of bonds (or angles) that are defined in the Chemical Component Dictionary. The Link column lists molecule types, if any, to which the group is linked. The Z score for a bond length (or angle) is the number of standard deviations the observed value is removed from the expected value. A bond length (or angle) with $|Z| > 2$ is considered an outlier worth inspection. RMSZ is the root-mean-square of all Z scores of the bond lengths (or angles).

Mol	Type	Chain	Res	Link	Bond lengths			Bond angles		
					Counts	RMSZ	# Z > 2	Counts	RMSZ	# Z > 2
2	2QX	A	1101	-	59,59,59	1.50	12 (20%)	73,80,80	1.94	11 (15%)
2	2QX	B	1101	-	59,59,59	1.37	6 (10%)	73,80,80	2.19	14 (19%)

In the following table, the Chirals column lists the number of chiral outliers, the number of chiral centers analysed, the number of these observed in the model and the number defined in the Chemical Component Dictionary. Similar counts are reported in the Torsion and Rings columns. '-' means no outliers of that kind were identified.

Mol	Type	Chain	Res	Link	Chirals	Torsions	Rings
2	2QX	A	1101	-	-	10/39/61/61	0/6/6/6
2	2QX	B	1101	-	-	8/39/61/61	0/6/6/6

The worst 5 of 18 bond length outliers are listed below:

Mol	Chain	Res	Type	Atoms	Z	Observed(Å)	Ideal(Å)
2	A	1101	2QX	C11-C12	4.87	1.47	1.38
2	B	1101	2QX	C9-C10	-4.39	1.49	1.54
2	B	1101	2QX	C11-C12	4.36	1.46	1.38
2	A	1101	2QX	C6-C7	3.68	1.47	1.38
2	B	1101	2QX	C5-N	3.40	1.43	1.37

The worst 5 of 25 bond angle outliers are listed below:

Mol	Chain	Res	Type	Atoms	Z	Observed(°)	Ideal(°)
2	B	1101	2QX	O3-C42-N4	11.60	123.47	110.93
2	A	1101	2QX	O3-C42-N4	9.36	121.04	110.93
2	A	1101	2QX	C43-O3-C42	7.92	125.02	115.66
2	B	1101	2QX	C43-O3-C42	7.16	124.11	115.66
2	B	1101	2QX	O3-C42-O2	-6.81	114.56	124.58

There are no chirality outliers.

5 of 18 torsion outliers are listed below:

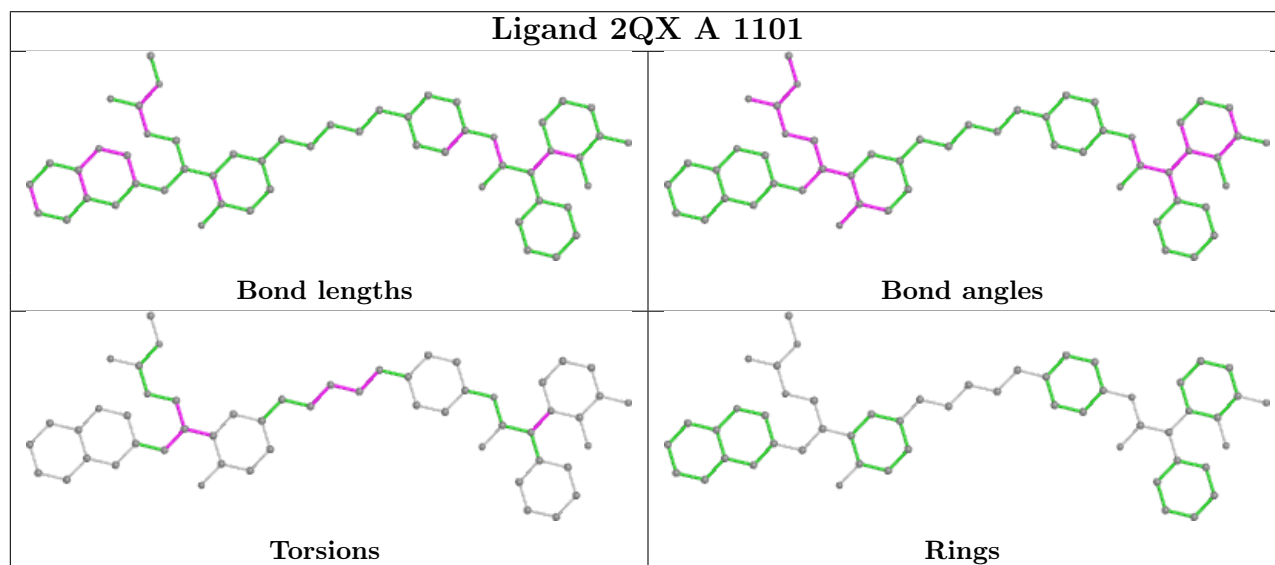
Mol	Chain	Res	Type	Atoms
2	A	1101	2QX	C9-C10-C41-N4
2	A	1101	2QX	C11-C10-C41-N4
2	B	1101	2QX	C10-C41-N4-C42
2	B	1101	2QX	C41-C10-C11-C12
2	A	1101	2QX	C19-C20-C21-C22

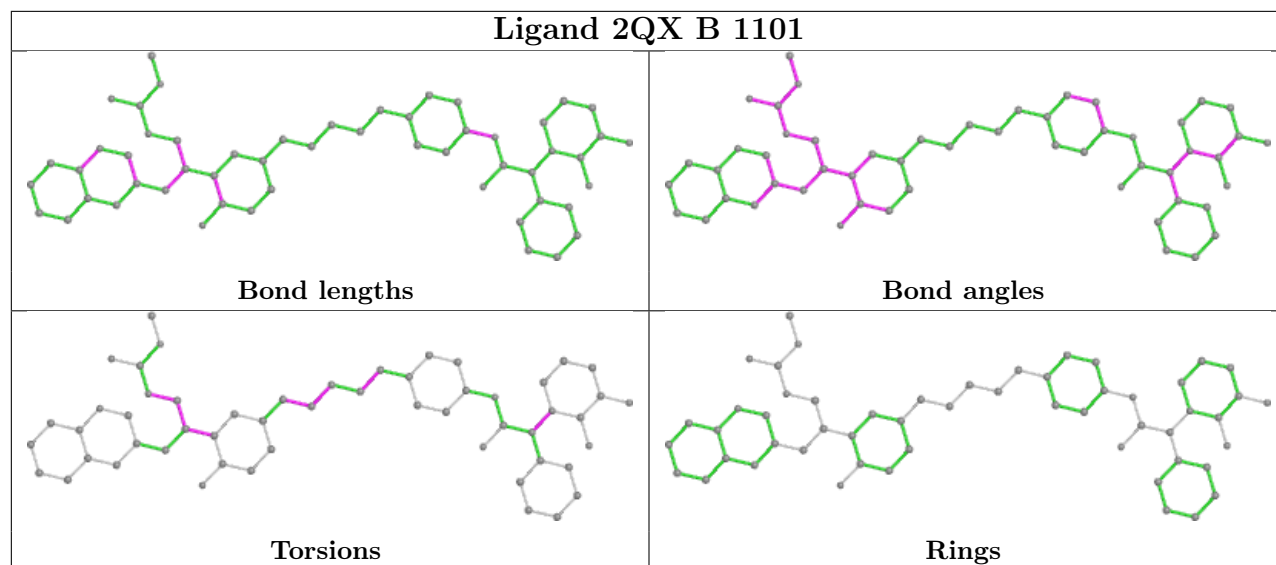
There are no ring outliers.

2 monomers are involved in 9 short contacts:

Mol	Chain	Res	Type	Clashes	Symm-Clashes
2	A	1101	2QX	2	0
2	B	1101	2QX	7	0

The following is a two-dimensional graphical depiction of Mogul quality analysis of bond lengths, bond angles, torsion angles, and ring geometry for all instances of the Ligand of Interest. In addition, ligands with molecular weight > 250 and outliers as shown on the validation Tables will also be included. For torsion angles, if less than 5% of the Mogul distribution of torsion angles is within 10 degrees of the torsion angle in question, then that torsion angle is considered an outlier. Any bond that is central to one or more torsion angles identified as an outlier by Mogul will be highlighted in the graph. For rings, the root-mean-square deviation (RMSD) between the ring in question and similar rings identified by Mogul is calculated over all ring torsion angles. If the average RMSD is greater than 60 degrees and the minimal RMSD between the ring in question and any Mogul-identified rings is also greater than 60 degrees, then that ring is considered an outlier. The outliers are highlighted in purple. The color gray indicates Mogul did not find sufficient equivalents in the CSD to analyse the geometry.





5.7 Other polymers [i](#)

There are no such residues in this entry.

5.8 Polymer linkage issues [i](#)

There are no chain breaks in this entry.

6 Fit of model and data [i](#)

6.1 Protein, DNA and RNA chains [i](#)

In the following table, the column labelled ‘#RSRZ > 2’ contains the number (and percentage) of RSRZ outliers, followed by percent RSRZ outliers for the chain as percentile scores relative to all X-ray entries and entries of similar resolution. The OWAB column contains the minimum, median, 95th percentile and maximum values of the occupancy-weighted average B-factor per residue. The column labelled ‘Q < 0.9’ lists the number of (and percentage) of residues with an average occupancy less than 0.9.

Mol	Chain	Analysed	<RSRZ>	#RSRZ>2	OWAB(Å ²)	Q<0.9
1	A	959/989 (96%)	-0.06	21 (2%) 62 60	27, 46, 72, 126	0
1	B	956/989 (96%)	0.03	34 (3%) 42 40	28, 49, 79, 125	0
All	All	1915/1978 (96%)	-0.01	55 (2%) 51 49	27, 47, 76, 126	0

The worst 5 of 55 RSRZ outliers are listed below:

Mol	Chain	Res	Type	RSRZ
1	B	1013	ASN	8.0
1	B	45	PRO	5.5
1	B	1012	ILE	5.4
1	A	979	ASN	5.2
1	A	978	ILE	4.9

6.2 Non-standard residues in protein, DNA, RNA chains [i](#)

There are no non-standard protein/DNA/RNA residues in this entry.

6.3 Carbohydrates [i](#)

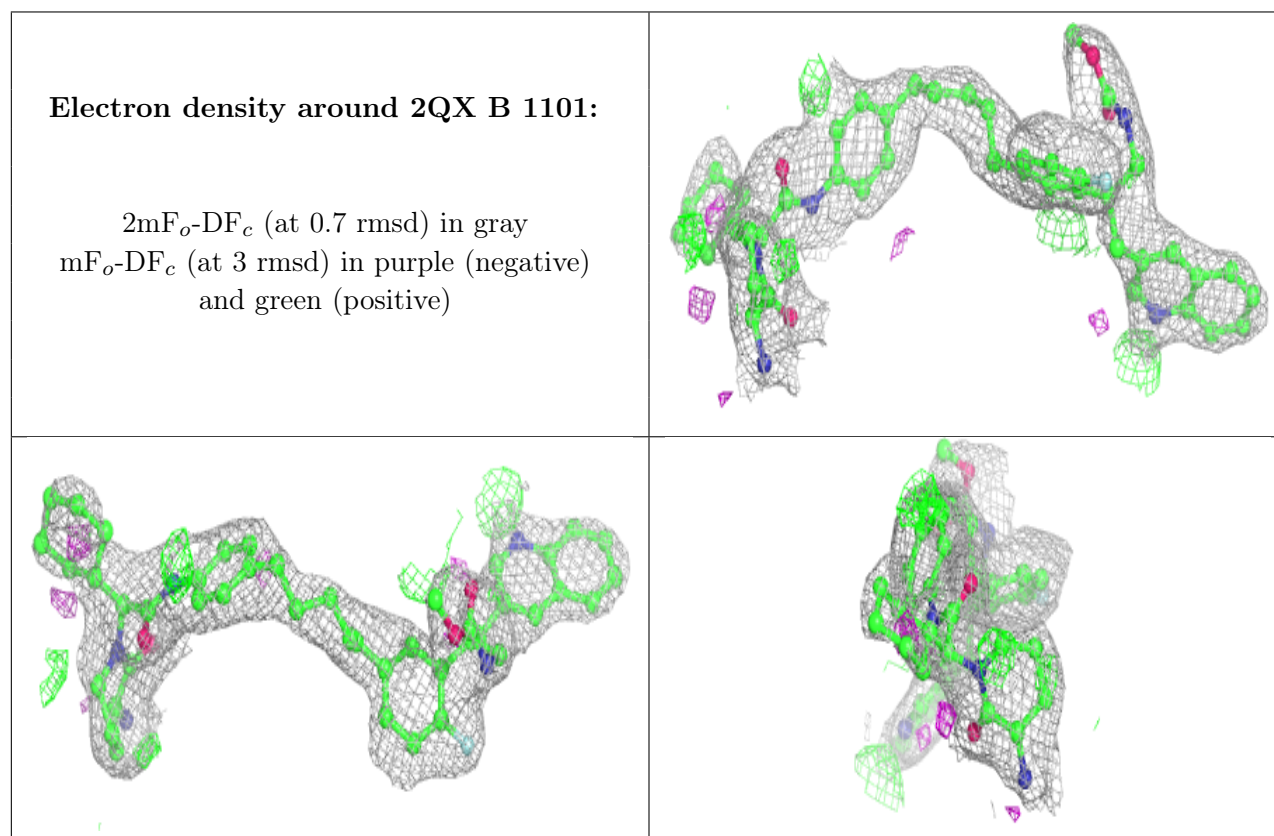
There are no monosaccharides in this entry.

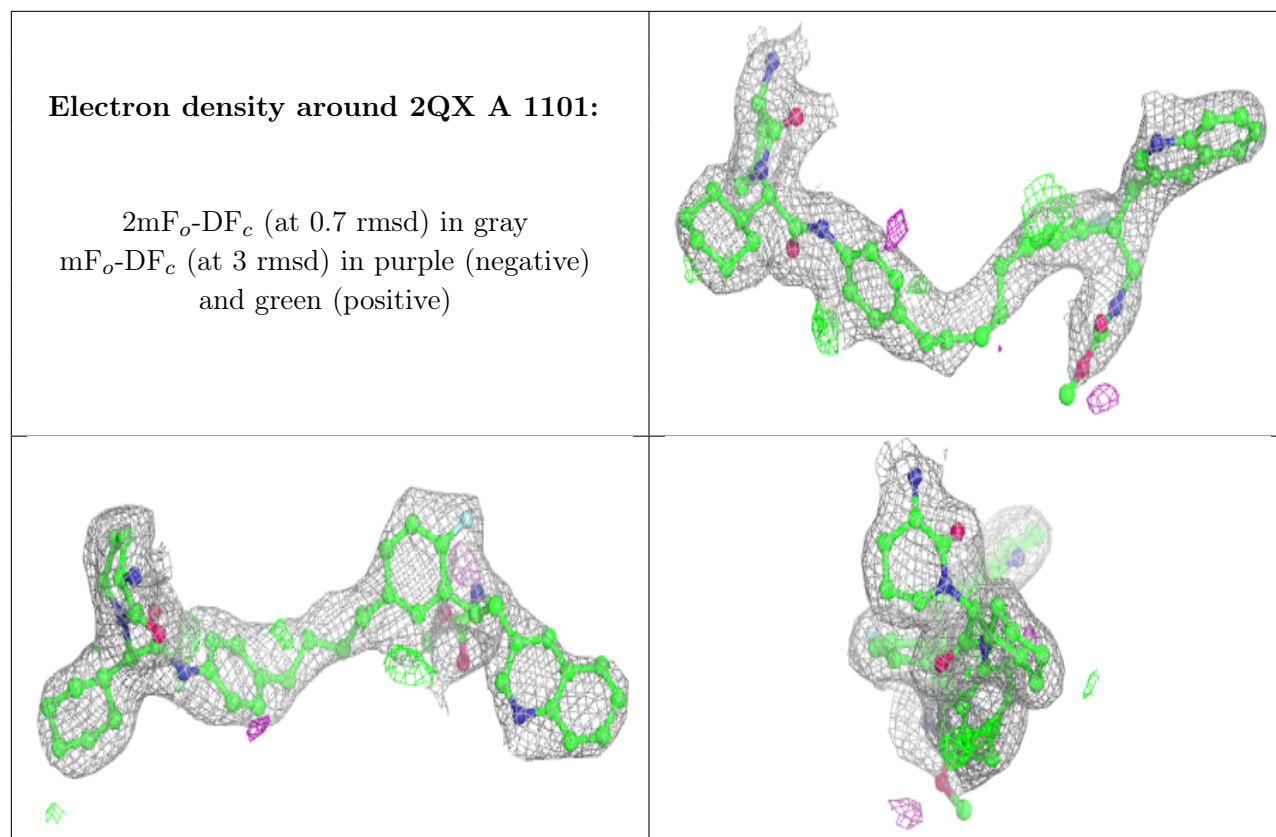
6.4 Ligands [i](#)

In the following table, the Atoms column lists the number of modelled atoms in the group and the number defined in the chemical component dictionary. The B-factors column lists the minimum, median, 95th percentile and maximum values of B factors of atoms in the group. The column labelled ‘Q < 0.9’ lists the number of atoms with occupancy less than 0.9.

Mol	Type	Chain	Res	Atoms	RSCC	RSR	B-factors(\AA^2)	Q<0.9
2	2QX	B	1101	54/54	0.85	0.20	48,62,71,72	0
2	2QX	A	1101	54/54	0.88	0.17	35,61,77,80	0
3	ZN	B	1102	1/1	0.97	0.07	87,87,87,87	0
3	ZN	A	1102	1/1	0.98	0.08	103,103,103,103	0

The following is a graphical depiction of the model fit to experimental electron density of all instances of the Ligand of Interest. In addition, ligands with molecular weight > 250 and outliers as shown on the geometry validation Tables will also be included. Each fit is shown from different orientation to approximate a three-dimensional view.





6.5 Other polymers [i](#)

There are no such residues in this entry.