



wwPDB X-ray Structure Validation Summary Report ⓘ

Nov 4, 2023 – 06:19 AM EDT

PDB ID : 4OVZ
Title : X-Ray Structural and Biological Evaluation of a Series of Potent and Highly Selective Inhibitors of Human Coronavirus Papain-Like Proteases
Authors : Baez-Santos, Y.M.; Mesecar, A.
Deposited on : 2014-01-28
Resolution : 2.50 Å (reported)

This is a wwPDB X-ray Structure Validation Summary Report for a publicly released PDB entry.

We welcome your comments at validation@mail.wwpdb.org

A user guide is available at

<https://www.wwpdb.org/validation/2017/XrayValidationReportHelp>

with specific help available everywhere you see the ⓘ symbol.

The types of validation reports are described at

<http://www.wwpdb.org/validation/2017/FAQs#types>.

The following versions of software and data (see [references ⓘ](#)) were used in the production of this report:

MolProbity : 4.02b-467
Mogul : 1.8.5 (274361), CSD as541be (2020)
Xtriage (Phenix) : 1.13
EDS : 2.36
buster-report : 1.1.7 (2018)
Percentile statistics : 20191225.v01 (using entries in the PDB archive December 25th 2019)
Refmac : 5.8.0158
CCP4 : 7.0.044 (Gargrove)
Ideal geometry (proteins) : Engh & Huber (2001)
Ideal geometry (DNA, RNA) : Parkinson et al. (1996)
Validation Pipeline (wwPDB-VP) : 2.36

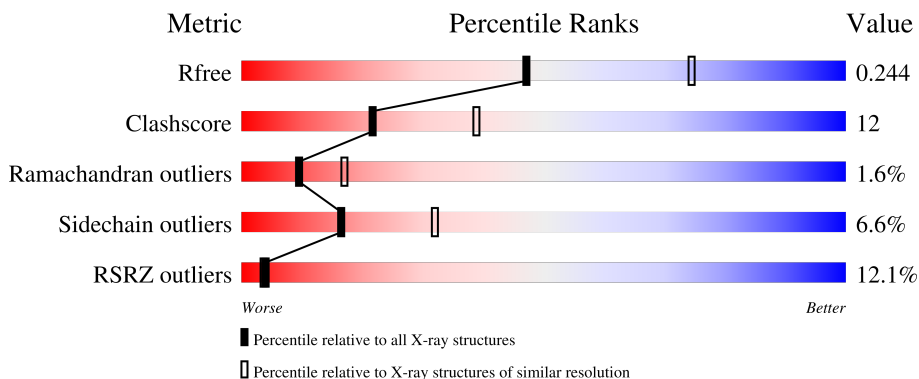
1 Overall quality at a glance

The following experimental techniques were used to determine the structure:

X-RAY DIFFRACTION

The reported resolution of this entry is 2.50 Å.

Percentile scores (ranging between 0-100) for global validation metrics of the entry are shown in the following graphic. The table shows the number of entries on which the scores are based.



Metric	Whole archive (#Entries)	Similar resolution (#Entries, resolution range(Å))
R_{free}	130704	4661 (2.50-2.50)
Clashscore	141614	5346 (2.50-2.50)
Ramachandran outliers	138981	5231 (2.50-2.50)
Sidechain outliers	138945	5233 (2.50-2.50)
RSRZ outliers	127900	4559 (2.50-2.50)

The table below summarises the geometric issues observed across the polymeric chains and their fit to the electron density. The red, orange, yellow and green segments of the lower bar indicate the fraction of residues that contain outliers for ≥ 3 , 2, 1 and 0 types of geometric quality criteria respectively. A grey segment represents the fraction of residues that are not modelled. The numeric value for each fraction is indicated below the corresponding segment, with a dot representing fractions $\leq 5\%$. The upper red bar (where present) indicates the fraction of residues that have poor fit to the electron density. The numeric value is given above the bar.

Mol	Chain	Length	Quality of chain
1	A	316	
2	B	316	

The following table lists non-polymeric compounds, carbohydrate monomers and non-standard residues in protein, DNA, RNA chains that are outliers for geometric or electron-density-fit criteria:

Mol	Type	Chain	Res	Chirality	Geometry	Clashes	Electron density
3	ZN	A	901	-	-	-	X
3	ZN	B	901	-	-	-	X
5	DMS	A	903	-	-	X	-

2 Entry composition [i](#)

There are 7 unique types of molecules in this entry. The entry contains 8889 atoms, of which 4338 are hydrogens and 0 are deuteriums.

In the tables below, the ZeroOcc column contains the number of atoms modelled with zero occupancy, the AltConf column contains the number of residues with at least one atom in alternate conformation and the Trace column contains the number of residues modelled with at most 2 atoms.

- Molecule 1 is a protein called Papain-like proteinase.

Mol	Chain	Residues	Atoms					ZeroOcc	AltConf	Trace	
			Total	C	H	N	O				S
1	A	305	4738	1522	2332	400	467	17	0	0	0

There is a discrepancy between the modelled and reference sequences:

Chain	Residue	Modelled	Actual	Comment	Reference
A	1	MET	-	initiating methionine	UNP P0C6U8

- Molecule 2 is a protein called Papain-like proteinase.

Mol	Chain	Residues	Atoms					ZeroOcc	AltConf	Trace	
			Total	C	H	N	O				S
2	B	252	3938	1259	1949	333	382	15	0	0	0

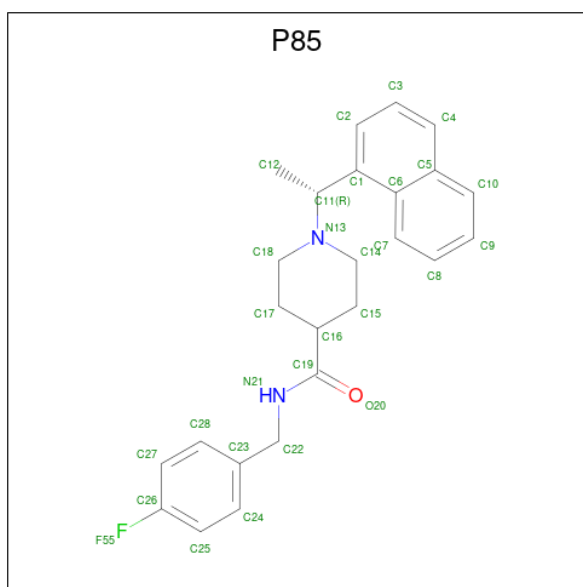
There is a discrepancy between the modelled and reference sequences:

Chain	Residue	Modelled	Actual	Comment	Reference
B	1	MET	-	initiating methionine	UNP P0C6U8

- Molecule 3 is ZINC ION (three-letter code: ZN) (formula: Zn).

Mol	Chain	Residues	Atoms		ZeroOcc	AltConf
3	A	1	Total	Zn	0	0
			1	1		
3	B	1	Total	Zn	0	0
			1	1		

- Molecule 4 is N-[(4-fluorophenyl)methyl]-1-[(1R)-1-naphthalen-1-ylethyl]piperidine-4-carboxamide (three-letter code: P85) (formula: C₂₅H₂₇FN₂O).



Mol	Chain	Residues	Atoms					ZeroOcc	AltConf	
4	A	1	Total	C	F	H	N	O	0	0
			56	25	1	27	2	1		
4	B	1	Total	C	F	N	O	0	0	
			29	25	1	2	1			

- Molecule 5 is DIMETHYL SULFOXIDE (three-letter code: DMS) (formula: C_2H_6OS).



Mol	Chain	Residues	Atoms					ZeroOcc	AltConf
5	A	1	Total	C	H	O	S	0	0
			10	2	6	1	1		
5	B	1	Total	C	H	O	S	0	0
			10	2	6	1	1		

Continued on next page...

Continued from previous page...

Mol	Chain	Residues	Atoms					ZeroOcc	AltConf
5	B	1	Total	C	H	O	S	0	0
			10	2	6	1	1		
5	B	1	Total	C	H	O	S	0	0
			10	2	6	1	1		
5	B	1	Total	C	H	O	S	0	0
			10	2	6	1	1		

- Molecule 6 is SODIUM ION (three-letter code: NA) (formula: Na).

Mol	Chain	Residues	Atoms		ZeroOcc	AltConf
6	B	1	Total	Na	0	0
			1	1		

- Molecule 7 is water.

Mol	Chain	Residues	Atoms		ZeroOcc	AltConf
7	A	41	Total	O	2	0
			41	41		
7	B	34	Total	O	0	0
			34	34		

4 Data and refinement statistics

Property	Value	Source
Space group	C 1 2 1	Depositor
Cell constants a, b, c, α , β , γ	119.77Å 73.51Å 98.27Å 90.00° 103.66° 90.00°	Depositor
Resolution (Å)	35.75 – 2.50 35.75 – 2.50	Depositor EDS
% Data completeness (in resolution range)	85.8 (35.75-2.50) 82.4 (35.75-2.50)	Depositor EDS
R_{merge}	0.07	Depositor
R_{sym}	(Not available)	Depositor
$\langle I/\sigma(I) \rangle$ ¹	4.73 (at 2.51Å)	Xtrriage
Refinement program	PHENIX (phenix.refine: 1.8_1069)	Depositor
R, R_{free}	0.182 , 0.243 0.185 , 0.244	Depositor DCC
R_{free} test set	1265 reflections (5.08%)	wwPDB-VP
Wilson B-factor (Å ²)	28.7	Xtrriage
Anisotropy	0.198	Xtrriage
Bulk solvent k_{sol} (e/Å ³), B_{sol} (Å ²)	0.46 , 67.0	EDS
L-test for twinning ²	$\langle L \rangle = 0.49$, $\langle L^2 \rangle = 0.33$	Xtrriage
Estimated twinning fraction	No twinning to report.	Xtrriage
F_o, F_c correlation	0.93	EDS
Total number of atoms	8889	wwPDB-VP
Average B, all atoms (Å ²)	40.0	wwPDB-VP

Xtrriage's analysis on translational NCS is as follows: *The largest off-origin peak in the Patterson function is 5.73% of the height of the origin peak. No significant pseudotranslation is detected.*

¹Intensities estimated from amplitudes.

²Theoretical values of $\langle |L| \rangle$, $\langle L^2 \rangle$ for acentric reflections are 0.5, 0.333 respectively for untwinned datasets, and 0.375, 0.2 for perfectly twinned datasets.

5 Model quality [i](#)

5.1 Standard geometry [i](#)

Bond lengths and bond angles in the following residue types are not validated in this section: DMS, ZN, OCS, CSO, P85, NA

The Z score for a bond length (or angle) is the number of standard deviations the observed value is removed from the expected value. A bond length (or angle) with $|Z| > 5$ is considered an outlier worth inspection. RMSZ is the root-mean-square of all Z scores of the bond lengths (or angles).

Mol	Chain	Bond lengths		Bond angles	
		RMSZ	# $ Z > 5$	RMSZ	# $ Z > 5$
1	A	0.72	1/2443 (0.0%)	0.76	4/3313 (0.1%)
2	B	0.77	0/2022	0.80	1/2737 (0.0%)
All	All	0.74	1/4465 (0.0%)	0.78	5/6050 (0.1%)

Chiral center outliers are detected by calculating the chiral volume of a chiral center and verifying if the center is modelled as a planar moiety or with the opposite hand. A planarity outlier is detected by checking planarity of atoms in a peptide group, atoms in a mainchain group or atoms of a sidechain that are expected to be planar.

Mol	Chain	#Chirality outliers	#Planarity outliers
1	A	0	1

All (1) bond length outliers are listed below:

Mol	Chain	Res	Type	Atoms	Z	Observed(Å)	Ideal(Å)
1	A	252	TYR	CD1-CE1	-5.64	1.30	1.39

All (5) bond angle outliers are listed below:

Mol	Chain	Res	Type	Atoms	Z	Observed(°)	Ideal(°)
2	B	184	ARG	NE-CZ-NH2	-6.93	116.83	120.30
1	A	45	ILE	CG1-CB-CG2	6.36	125.40	111.40
1	A	77	ASP	CB-CG-OD1	6.32	123.99	118.30
1	A	230	ASP	N-CA-C	5.88	126.89	111.00
1	A	77	ASP	CB-CG-OD2	-5.37	113.47	118.30

There are no chirality outliers.

All (1) planarity outliers are listed below:

Mol	Chain	Res	Type	Group
1	A	111	ASN	Peptide

5.2 Too-close contacts [i](#)

In the following table, the Non-H and H(model) columns list the number of non-hydrogen atoms and hydrogen atoms in the chain respectively. The H(added) column lists the number of hydrogen atoms added and optimized by MolProbity. The Clashes column lists the number of clashes within the asymmetric unit, whereas Symm-Clashes lists symmetry-related clashes.

Mol	Chain	Non-H	H(model)	H(added)	Clashes	Symm-Clashes
1	A	2406	2332	2326	79	0
2	B	1989	1949	1944	26	0
3	A	1	0	0	0	0
3	B	1	0	0	0	0
4	A	29	27	27	3	0
4	B	29	0	27	4	0
5	A	4	6	6	4	0
5	B	16	24	24	0	0
6	B	1	0	0	0	0
7	A	41	0	0	2	0
7	B	34	0	0	2	0
All	All	4551	4338	4354	105	0

The all-atom clashscore is defined as the number of clashes found per 1000 atoms (including hydrogen atoms). The all-atom clashscore for this structure is 12.

The worst 5 of 105 close contacts within the same asymmetric unit are listed below, sorted by their clash magnitude.

Atom-1	Atom-2	Interatomic distance (Å)	Clash overlap (Å)
1:A:281:GLU:OE2	1:A:284:TYR:OH	1.74	1.05
2:B:265:TYR:CE1	4:B:902:P85:H142	2.07	0.90
1:A:225:CYS:HB2	1:A:230:ASP:HA	1.52	0.89
1:A:59:LEU:O	1:A:61:SER:N	2.19	0.76
1:A:190:CYS:HB2	1:A:193:CYS:CB	2.20	0.72

There are no symmetry-related clashes.

5.3 Torsion angles [i](#)

5.3.1 Protein backbone [i](#)

In the following table, the Percentiles column shows the percent Ramachandran outliers of the chain as a percentile score with respect to all X-ray entries followed by that with respect to entries of similar resolution.

The Analysed column shows the number of residues for which the backbone conformation was analysed, and the total number of residues.

Mol	Chain	Analysed	Favoured	Allowed	Outliers	Percentiles	
1	A	301/316 (95%)	276 (92%)	18 (6%)	7 (2%)	6	10
2	B	249/316 (79%)	234 (94%)	13 (5%)	2 (1%)	19	35
All	All	550/632 (87%)	510 (93%)	31 (6%)	9 (2%)	9	17

5 of 9 Ramachandran outliers are listed below:

Mol	Chain	Res	Type
1	A	40	ALA
2	B	196	LYS
1	A	25	SER
1	A	60	PRO
1	A	230	ASP

5.3.2 Protein sidechains [i](#)

In the following table, the Percentiles column shows the percent sidechain outliers of the chain as a percentile score with respect to all X-ray entries followed by that with respect to entries of similar resolution.

The Analysed column shows the number of residues for which the sidechain conformation was analysed, and the total number of residues.

Mol	Chain	Analysed	Rotameric	Outliers	Percentiles	
1	A	260/271 (96%)	245 (94%)	15 (6%)	20	38
2	B	213/272 (78%)	197 (92%)	16 (8%)	13	26
All	All	473/543 (87%)	442 (93%)	31 (7%)	16	32

5 of 31 residues with a non-rotameric sidechain are listed below:

Mol	Chain	Res	Type
1	A	294	MET

Continued on next page...

Continued from previous page...

Mol	Chain	Res	Type
2	B	223	ILE
2	B	81	LEU
2	B	264	GLU
2	B	209	MET

Sometimes sidechains can be flipped to improve hydrogen bonding and reduce clashes. There are no such sidechains identified.

5.3.3 RNA [i](#)

There are no RNA molecules in this entry.

5.4 Non-standard residues in protein, DNA, RNA chains [i](#)

3 non-standard protein/DNA/RNA residues are modelled in this entry.

In the following table, the Counts columns list the number of bonds (or angles) for which Mogul statistics could be retrieved, the number of bonds (or angles) that are observed in the model and the number of bonds (or angles) that are defined in the Chemical Component Dictionary. The Link column lists molecule types, if any, to which the group is linked. The Z score for a bond length (or angle) is the number of standard deviations the observed value is removed from the expected value. A bond length (or angle) with $|Z| > 2$ is considered an outlier worth inspection. RMSZ is the root-mean-square of all Z scores of the bond lengths (or angles).

Mol	Type	Chain	Res	Link	Bond lengths			Bond angles		
					Counts	RMSZ	# Z > 2	Counts	RMSZ	# Z > 2
1	CSO	A	271	1	3,6,7	0.77	0	0,6,8	-	-
1	OCS	A	112	1	7,8,9	1.93	2 (28%)	6,11,13	2.00	2 (33%)
2	OCS	B	112	2	7,8,9	0.95	0	6,11,13	2.36	1 (16%)

In the following table, the Chirals column lists the number of chiral outliers, the number of chiral centers analysed, the number of these observed in the model and the number defined in the Chemical Component Dictionary. Similar counts are reported in the Torsion and Rings columns. '-' means no outliers of that kind were identified.

Mol	Type	Chain	Res	Link	Chirals	Torsions	Rings
1	CSO	A	271	1	-	0/1/5/7	-
1	OCS	A	112	1	-	4/4/7/9	-
2	OCS	B	112	2	-	3/4/7/9	-

All (2) bond length outliers are listed below:

Mol	Chain	Res	Type	Atoms	Z	Observed(Å)	Ideal(Å)
1	A	112	OCS	CB-CA	-3.26	1.50	1.53
1	A	112	OCS	CB-SG	-2.47	1.68	1.77

All (3) bond angle outliers are listed below:

Mol	Chain	Res	Type	Atoms	Z	Observed(°)	Ideal(°)
2	B	112	OCS	OD3-SG-CB	5.24	113.17	106.94
1	A	112	OCS	OD2-SG-CB	-3.67	99.89	105.74
1	A	112	OCS	OD1-SG-CB	3.01	110.52	106.94

There are no chirality outliers.

5 of 7 torsion outliers are listed below:

Mol	Chain	Res	Type	Atoms
1	A	112	OCS	N-CA-CB-SG
1	A	112	OCS	CA-CB-SG-OD1
1	A	112	OCS	CA-CB-SG-OD2
1	A	112	OCS	CA-CB-SG-OD3
2	B	112	OCS	CA-CB-SG-OD2

There are no ring outliers.

1 monomer is involved in 1 short contact:

Mol	Chain	Res	Type	Clashes	Symm-Clashes
2	B	112	OCS	1	0

5.5 Carbohydrates [i](#)

There are no monosaccharides in this entry.

5.6 Ligand geometry [i](#)

Of 10 ligands modelled in this entry, 3 are monoatomic - leaving 7 for Mogul analysis.

In the following table, the Counts columns list the number of bonds (or angles) for which Mogul statistics could be retrieved, the number of bonds (or angles) that are observed in the model and the number of bonds (or angles) that are defined in the Chemical Component Dictionary. The Link column lists molecule types, if any, to which the group is linked. The Z score for a bond length (or angle) is the number of standard deviations the observed value is removed from the expected value. A bond length (or angle) with $|Z| > 2$ is considered an outlier worth inspection. RMSZ is the root-mean-square of all Z scores of the bond lengths (or angles).

Mol	Type	Chain	Res	Link	Bond lengths			Bond angles		
					Counts	RMSZ	# Z > 2	Counts	RMSZ	# Z > 2
5	DMS	A	903	-	3,3,3	0.65	0	3,3,3	0.66	0
4	P85	B	902	-	32,32,32	2.53	10 (31%)	41,44,44	1.81	11 (26%)
5	DMS	B	905	-	3,3,3	0.76	0	3,3,3	0.69	0
5	DMS	B	907	-	3,3,3	0.63	0	3,3,3	1.64	0
5	DMS	B	904	-	3,3,3	0.71	0	3,3,3	1.11	0
4	P85	A	902	-	32,32,32	2.42	12 (37%)	41,44,44	2.05	13 (31%)
5	DMS	B	906	-	3,3,3	0.74	0	3,3,3	0.62	0

In the following table, the Chirals column lists the number of chiral outliers, the number of chiral centers analysed, the number of these observed in the model and the number defined in the Chemical Component Dictionary. Similar counts are reported in the Torsion and Rings columns. '-' means no outliers of that kind were identified.

Mol	Type	Chain	Res	Link	Chirals	Torsions	Rings
4	P85	B	902	-	-	3/17/27/27	0/4/4/4
4	P85	A	902	-	-	4/17/27/27	0/4/4/4

The worst 5 of 22 bond length outliers are listed below:

Mol	Chain	Res	Type	Atoms	Z	Observed(Å)	Ideal(Å)
4	B	902	P85	C1-C11	7.58	1.61	1.52
4	A	902	P85	C1-C11	5.82	1.59	1.52
4	B	902	P85	C3-C2	4.65	1.48	1.38
4	A	902	P85	C3-C2	4.57	1.48	1.38
4	A	902	P85	C11-N13	4.47	1.59	1.48

The worst 5 of 24 bond angle outliers are listed below:

Mol	Chain	Res	Type	Atoms	Z	Observed(°)	Ideal(°)
4	A	902	P85	C15-C14-N13	6.30	121.08	111.43
4	B	902	P85	C25-C26-C27	-4.10	117.38	122.83
4	A	902	P85	C12-C11-C1	-3.98	106.02	114.21
4	B	902	P85	C24-C25-C26	3.91	122.40	118.36
4	A	902	P85	C12-C11-N13	3.77	120.91	112.47

There are no chirality outliers.

5 of 7 torsion outliers are listed below:

Mol	Chain	Res	Type	Atoms
4	A	902	P85	C6-C1-C11-N13
4	A	902	P85	C6-C1-C11-C12

Continued on next page...

Continued from previous page...

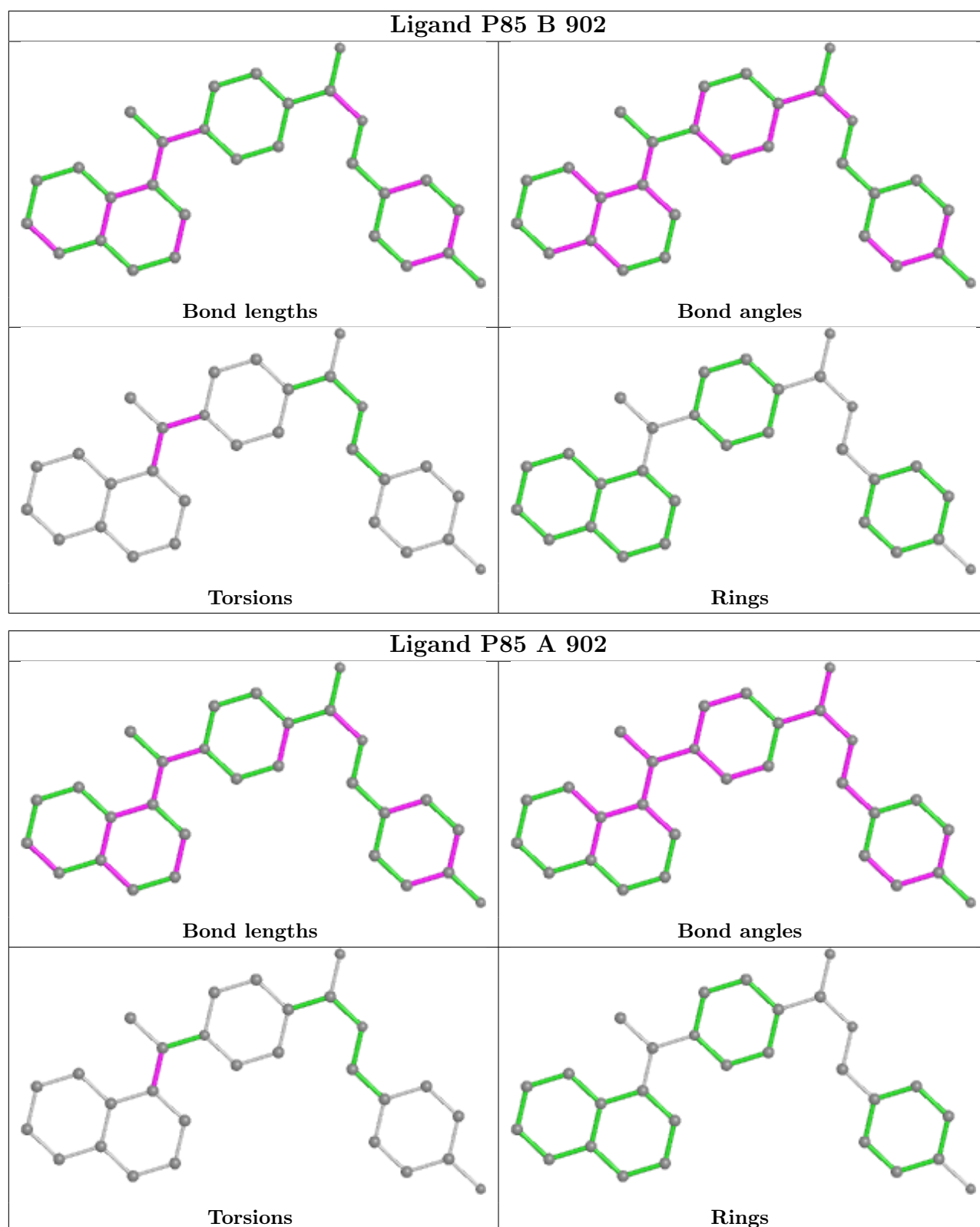
Mol	Chain	Res	Type	Atoms
4	B	902	P85	C12-C11-N13-C18
4	B	902	P85	C1-C11-N13-C18
4	A	902	P85	C2-C1-C11-C12

There are no ring outliers.

3 monomers are involved in 8 short contacts:

Mol	Chain	Res	Type	Clashes	Symm-Clashes
5	A	903	DMS	4	0
4	B	902	P85	4	0
4	A	902	P85	3	0

The following is a two-dimensional graphical depiction of Mogul quality analysis of bond lengths, bond angles, torsion angles, and ring geometry for all instances of the Ligand of Interest. In addition, ligands with molecular weight > 250 and outliers as shown on the validation Tables will also be included. For torsion angles, if less than 5% of the Mogul distribution of torsion angles is within 10 degrees of the torsion angle in question, then that torsion angle is considered an outlier. Any bond that is central to one or more torsion angles identified as an outlier by Mogul will be highlighted in the graph. For rings, the root-mean-square deviation (RMSD) between the ring in question and similar rings identified by Mogul is calculated over all ring torsion angles. If the average RMSD is greater than 60 degrees and the minimal RMSD between the ring in question and any Mogul-identified rings is also greater than 60 degrees, then that ring is considered an outlier. The outliers are highlighted in purple. The color gray indicates Mogul did not find sufficient equivalents in the CSD to analyse the geometry.



5.7 Other polymers [\(i\)](#)

There are no such residues in this entry.

5.8 Polymer linkage issues

There are no chain breaks in this entry.

6 Fit of model and data [i](#)

6.1 Protein, DNA and RNA chains [i](#)

In the following table, the column labelled ‘#RSRZ > 2’ contains the number (and percentage) of RSRZ outliers, followed by percent RSRZ outliers for the chain as percentile scores relative to all X-ray entries and entries of similar resolution. The OWAB column contains the minimum, median, 95th percentile and maximum values of the occupancy-weighted average B-factor per residue. The column labelled ‘Q < 0.9’ lists the number of (and percentage) of residues with an average occupancy less than 0.9.

Mol	Chain	Analysed	<RSRZ>	#RSRZ>2	OWAB(Å ²)	Q<0.9
1	A	303/316 (95%)	0.74	49 (16%) 1 1	12, 32, 109, 132	0
2	B	251/316 (79%)	0.09	18 (7%) 15 16	12, 23, 73, 121	0
All	All	554/632 (87%)	0.44	67 (12%) 4 4	12, 28, 104, 132	0

The worst 5 of 67 RSRZ outliers are listed below:

Mol	Chain	Res	Type	RSRZ
1	A	51	HIS	8.7
2	B	227	CYS	8.6
2	B	228	GLY	8.4
1	A	227	CYS	7.9
2	B	193	CYS	7.9

6.2 Non-standard residues in protein, DNA, RNA chains [i](#)

In the following table, the Atoms column lists the number of modelled atoms in the group and the number defined in the chemical component dictionary. The B-factors column lists the minimum, median, 95th percentile and maximum values of B factors of atoms in the group. The column labelled ‘Q < 0.9’ lists the number of atoms with occupancy less than 0.9.

Mol	Type	Chain	Res	Atoms	RSCC	RSR	B-factors(Å ²)	Q<0.9
1	CSO	A	271	7/8	0.95	0.13	22,26,39,53	0
2	OCS	B	112	9/10	0.97	0.12	15,17,32,36	0
1	OCS	A	112	9/10	0.98	0.15	20,23,35,36	0

6.3 Carbohydrates [i](#)

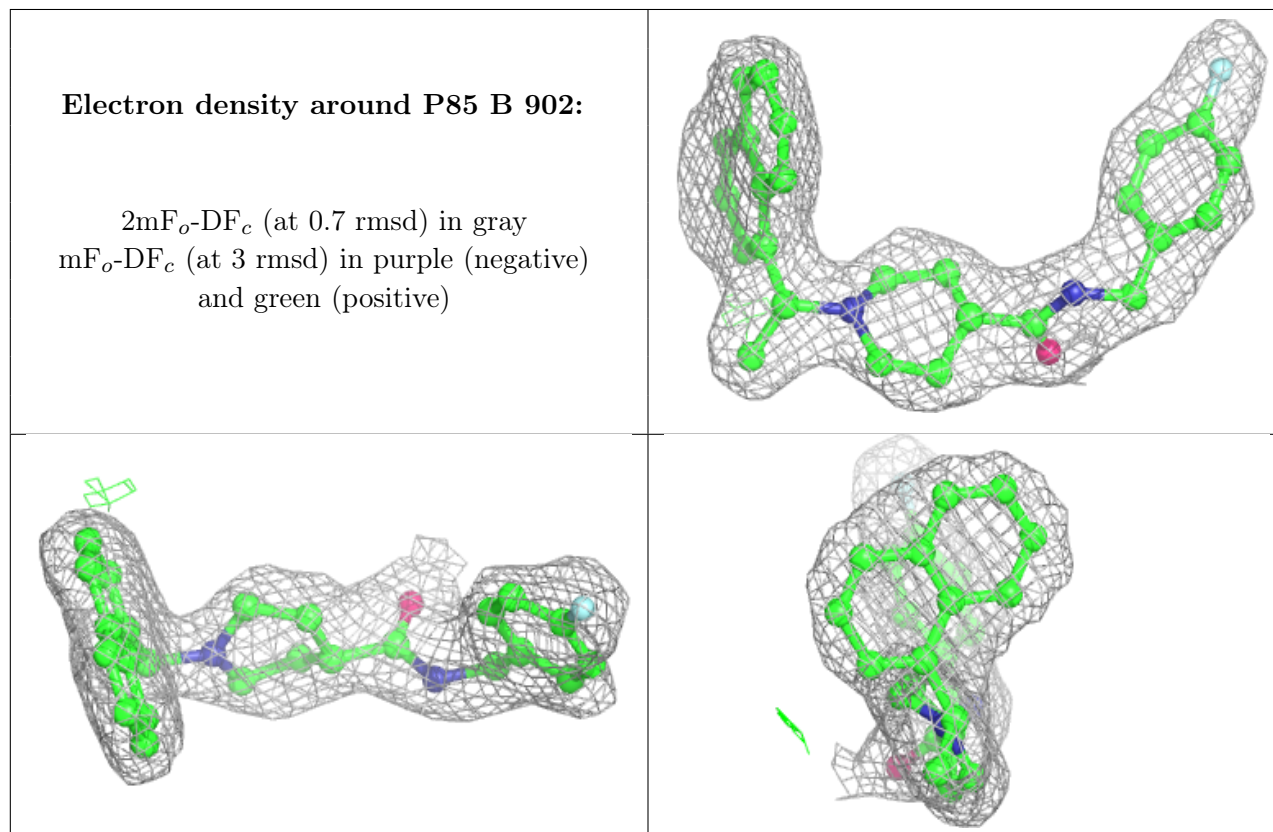
There are no monosaccharides in this entry.

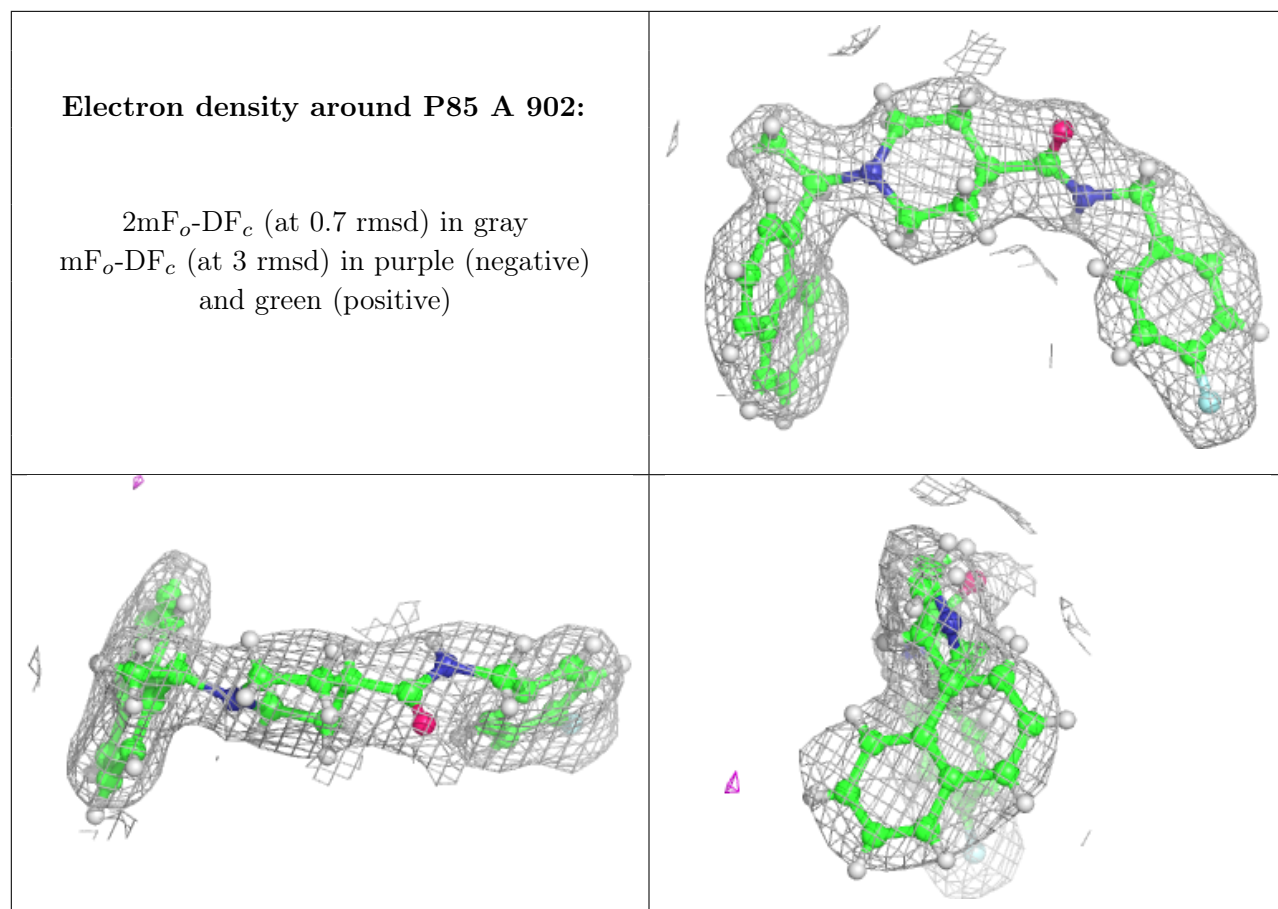
6.4 Ligands [i](#)

In the following table, the Atoms column lists the number of modelled atoms in the group and the number defined in the chemical component dictionary. The B-factors column lists the minimum, median, 95th percentile and maximum values of B factors of atoms in the group. The column labelled 'Q<0.9' lists the number of atoms with occupancy less than 0.9.

Mol	Type	Chain	Res	Atoms	RSCC	RSR	B-factors(Å ²)	Q<0.9
3	ZN	A	901	1/1	0.51	0.44	180,180,180,180	0
3	ZN	B	901	1/1	0.77	0.70	200,200,200,200	0
5	DMS	A	903	4/4	0.93	0.15	25,30,39,62	0
5	DMS	B	905	4/4	0.93	0.17	24,29,47,64	0
5	DMS	B	904	4/4	0.95	0.19	35,42,42,66	0
4	P85	B	902	29/29	0.96	0.14	10,20,32,34	0
5	DMS	B	906	4/4	0.96	0.10	32,38,40,62	0
5	DMS	B	907	4/4	0.96	0.11	15,29,35,57	0
4	P85	A	902	29/29	0.97	0.13	14,19,26,30	0
6	NA	B	903	1/1	0.98	0.28	31,31,31,31	0

The following is a graphical depiction of the model fit to experimental electron density of all instances of the Ligand of Interest. In addition, ligands with molecular weight > 250 and outliers as shown on the geometry validation Tables will also be included. Each fit is shown from different orientation to approximate a three-dimensional view.





6.5 Other polymers [i](#)

There are no such residues in this entry.