



Full wwPDB NMR Structure Validation Report ⓘ

Feb 17, 2022 – 08:10 AM EST

PDB ID : 1NIQ
Title : Solution Structure of the HOO-Bm bound BLMT, Transposon Tn5-encoding
Bleomycin-binding Protein
Authors : Sugiyama, M.
Deposited on : 2002-12-25

This is a Full wwPDB NMR Structure Validation Report for a publicly released PDB entry.

We welcome your comments at validation@mail.wwpdb.org

A user guide is available at

<https://www.wwpdb.org/validation/2017/NMRValidationReportHelp>

with specific help available everywhere you see the ⓘ symbol.

The following versions of software and data (see [references ⓘ](#)) were used in the production of this report:

MolProbity : 4.02b-467
Mogul : 1.8.5 (274361), CSD as541be (2020)
buster-report : 1.1.7 (2018)
Percentile statistics : 20191225.v01 (using entries in the PDB archive December 25th 2019)
RCI : v_1n_11_5_13_A (Berjanski et al., 2005)
PANAV : Wang et al. (2010)
ShiftChecker : 2.26
Ideal geometry (proteins) : Engh & Huber (2001)
Ideal geometry (DNA, RNA) : Parkinson et al. (1996)
Validation Pipeline (wwPDB-VP) : 2.26

1 Overall quality at a glance

The following experimental techniques were used to determine the structure:

SOLUTION NMR

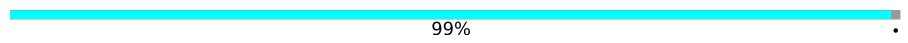
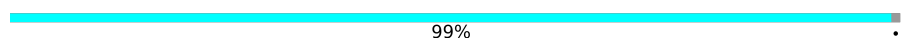
The overall completeness of chemical shifts assignment was not calculated.

Percentile scores (ranging between 0-100) for global validation metrics of the entry are shown in the following graphic. The table shows the number of entries on which the scores are based.



Metric	Whole archive (#Entries)	NMR archive (#Entries)
Clashscore	158937	12864

The table below summarises the geometric issues observed across the polymeric chains and their fit to the experimental data. The red, orange, yellow and green segments indicate the fraction of residues that contain outliers for ≥ 3 , 2, 1 and 0 types of geometric quality criteria. A cyan segment indicates the fraction of residues that are not part of the well-defined cores, and a grey segment represents the fraction of residues that are not modelled. The numeric value for each fraction is indicated below the corresponding segment, with a dot representing fractions $\leq 5\%$

Mol	Chain	Length	Quality of chain
1	B	126	 99% .
1	C	126	 99% .

2 Ensemble composition and analysis

This entry contains 1 models. Identification of well-defined residues and clustering analysis are not possible.

3 Entry composition i

There are 3 unique types of molecules in this entry. The entry contains 4152 atoms, of which 2012 are hydrogens and 0 are deuteriums.

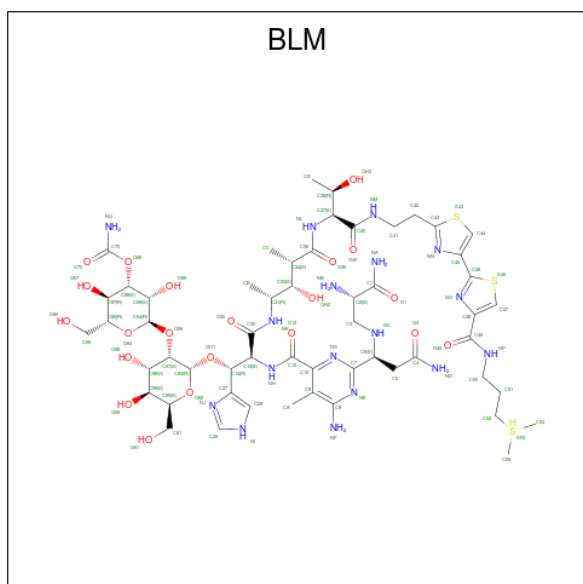
- Molecule 1 is a protein called Bleomycin Resistance Protein.

Mol	Chain	Residues	Atoms					Trace	
			Total	C	H	N	O		S
1	B	125	1905	623	929	165	182	6	0
1	C	125	1905	623	929	165	182	6	0

- Molecule 2 is COPPER (II) ION (three-letter code: CU) (formula: Cu).

Mol	Chain	Residues	Atoms	
			Total	Cu
2	B	2	2	2

- Molecule 3 is BLEOMYCIN A2 (three-letter code: BLM) (formula: C₅₅H₈₅N₁₇O₂₁S₃).

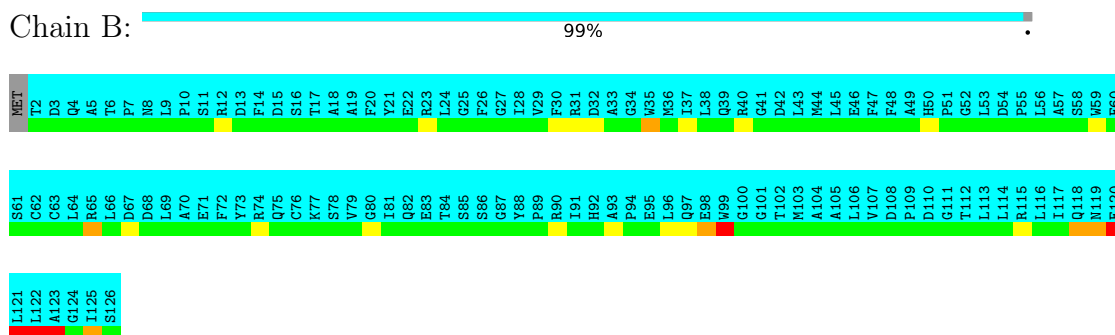


Mol	Chain	Residues	Atoms					
			Total	C	H	N	O	S
3	B	1	170	53	77	17	20	3
3	B	1	170	53	77	17	20	3

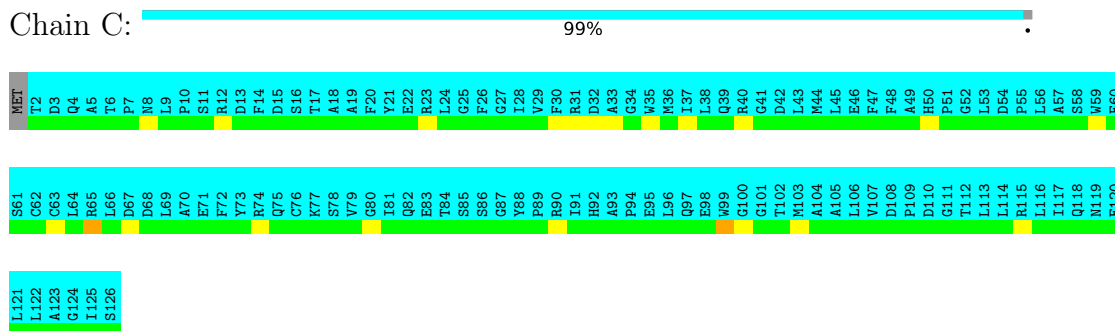
4 Residue-property plots

These plots are provided for all protein, RNA, DNA and oligosaccharide chains in the entry. The first graphic is the same as shown in the summary in section 1 of this report. The second graphic shows the sequence where residues are colour-coded according to the number of geometric quality criteria for which they contain at least one outlier: green = 0, yellow = 1, orange = 2 and red = 3 or more. Stretches of 2 or more consecutive residues without any outliers are shown as green connectors. Residues which are classified as ill-defined in the NMR ensemble, are shown in cyan with an underline colour-coded according to the previous scheme. Residues which were present in the experimental sample, but not modelled in the final structure are shown in grey.

- Molecule 1: Bleomycin Resistance Protein



- Molecule 1: Bleomycin Resistance Protein



5 Refinement protocol and experimental data overview

The models were refined using the following method: *distance geometry*.

Of the 20 calculated structures, 1 were deposited, based on the following criterion: *structures with the lowest energy*.

The following table shows the software used for structure solution, optimisation and refinement.

Software name	Classification	Version
Discover	refinement	2000

No chemical shift data was provided.

6 Model quality [i](#)

6.1 Standard geometry [i](#)

Bond lengths and bond angles in the following residue types are not validated in this section: CU, BLM

There are no covalent bond-length or bond-angle outliers.

There are no bond-length outliers.

There are no bond-angle outliers.

There are no chirality outliers.

There are no planarity outliers.

6.2 Too-close contacts [i](#)

In the following table, the Non-H and H(model) columns list the number of non-hydrogen atoms and hydrogen atoms in each chain respectively. The H(added) column lists the number of hydrogen atoms added and optimized by MolProbity. The Clashes column lists the number of clashes averaged over the ensemble.

Mol	Chain	Non-H	H(model)	H(added)	Clashes
1	B	0	0	0	0
1	C	0	0	0	0
3	B	186	154	0	0
All	All	188	154	0	-

The all-atom clashscore is defined as the number of clashes found per 1000 atoms (including hydrogen atoms). The all-atom clashscore for this structure is -.

There are no clashes.

6.3 Torsion angles [i](#)

6.3.1 Protein backbone [i](#)

In the following table, the Percentiles column shows the percent Ramachandran outliers of the chain as a percentile score with respect to all PDB entries followed by that with respect to all NMR entries. The Analysed column shows the number of residues for which the backbone conformation was analysed and the total number of residues.

Mol	Chain	Analysed	Favoured	Allowed	Outliers	Percentiles
1	B	0	-	-	-	-

Continued on next page...

Continued from previous page...

Mol	Chain	Analysed	Favoured	Allowed	Outliers	Percentiles
1	C	0	-	-	-	-
All	All	0	-	-	-	-

There are no Ramachandran outliers.

6.3.2 Protein sidechains [i](#)

In the following table, the Percentiles column shows the percent sidechain outliers of the chain as a percentile score with respect to all PDB entries followed by that with respect to all NMR entries. The Analysed column shows the number of residues for which the sidechain conformation was analysed and the total number of residues.

Mol	Chain	Analysed	Rotameric	Outliers	Percentiles
1	B	0	-	-	-
1	C	0	-	-	-
All	All	0	-	-	-

There are no protein residues with a non-rotameric sidechain to report.

6.3.3 RNA [i](#)

There are no RNA molecules in this entry.

6.4 Non-standard residues in protein, DNA, RNA chains [i](#)

There are no non-standard protein/DNA/RNA residues in this entry.

6.5 Carbohydrates [i](#)

There are no monosaccharides in this entry.

6.6 Ligand geometry [i](#)

Of 4 ligands modelled in this entry, 2 are monoatomic - leaving 2 for Mogul analysis.

In the following table, the Counts columns list the number of bonds for which Mogul statistics could be retrieved, the number of bonds that are observed in the model and the number of bonds that are defined in the chemical component dictionary. The Link column lists molecule types, if any, to which the group is linked. The Z score for a bond length is the number of standard deviations the observed value is removed from the expected value. A bond length with $|Z| > 2$ is

considered an outlier worth inspection. RMSZ is the average root-mean-square of all Z scores of the bond lengths.

Mol	Type	Chain	Res	Link	Bond lengths		
					Counts	RMSZ	#Z>2
3	BLM	B	2402	1,2	89,98,101	1.51	13 (14%)
3	BLM	B	3402	1,2	89,98,101	1.53	13 (14%)

In the following table, the Counts columns list the number of angles for which Mogul statistics could be retrieved, the number of angles that are observed in the model and the number of angles that are defined in the chemical component dictionary. The Link column lists molecule types, if any, to which the group is linked. The Z score for a bond angle is the number of standard deviations the observed value is removed from the expected value. A bond angle with $|Z| > 2$ is considered an outlier worth inspection. RMSZ is the average root-mean-square of all Z scores of the bond angles.

Mol	Type	Chain	Res	Link	Bond angles		
					Counts	RMSZ	#Z>2
3	BLM	B	2402	1,2	103,138,143	2.19	24 (23%)
3	BLM	B	3402	1,2	103,138,143	2.18	24 (23%)

In the following table, the Chirals column lists the number of chiral outliers, the number of chiral centers analysed, the number of these observed in the model and the number defined in the chemical component dictionary. Similar counts are reported in the Torsion and Rings columns. '-' means no outliers of that kind were identified.

Mol	Type	Chain	Res	Link	Chirals	Torsions	Rings
3	BLM	B	2402	1,2	-	0,79,135,142	0,6,6,6
3	BLM	B	3402	1,2	-	0,79,135,142	0,6,6,6

All bond outliers are listed below. They are sorted according to the Z-score.

Mol	Chain	Res	Type	Atoms	Z	Observed(Å)	Ideal(Å)
3	B	3402	BLM	C42-C43	6.34	1.53	1.49
3	B	2402	BLM	C42-C43	6.21	1.53	1.49
3	B	2402	BLM	C27-C14	3.49	1.54	1.51
3	B	3402	BLM	C27-C14	3.47	1.54	1.51
3	B	3402	BLM	C46-NO	3.39	1.36	1.31
3	B	2402	BLM	C46-NO	3.16	1.36	1.31
3	B	2402	BLM	C6-NC	3.08	1.52	1.47
3	B	3402	BLM	C6-NC	3.04	1.52	1.47
3	B	3402	BLM	C34-C36	3.01	1.57	1.52
3	B	2402	BLM	C34-C36	3.00	1.57	1.52
3	B	2402	BLM	C13-NH	2.71	1.51	1.45

Continued on next page...

Continued from previous page...

Mol	Chain	Res	Type	Atoms	Z	Observed(Å)	Ideal(Å)
3	B	2402	BLM	C46-C45	2.69	1.40	1.48
3	B	3402	BLM	C13-NH	2.69	1.51	1.45
3	B	3402	BLM	C7-NG	2.63	1.29	1.34
3	B	2402	BLM	C7-NG	2.59	1.29	1.34
3	B	3402	BLM	C46-C45	2.55	1.41	1.48
3	B	2402	BLM	C10-NG	2.54	1.40	1.34
3	B	3402	BLM	C10-NG	2.53	1.40	1.34
3	B	3402	BLM	C48-C49	2.35	1.56	1.50
3	B	3402	BLM	C3-NC	2.31	1.53	1.47
3	B	2402	BLM	C3-NC	2.30	1.53	1.47
3	B	2402	BLM	C48-C49	2.25	1.56	1.50
3	B	2402	BLM	C13-C14	2.15	1.57	1.53
3	B	3402	BLM	C13-C14	2.07	1.57	1.53
3	B	2402	BLM	C10-C12	2.06	1.47	1.50
3	B	3402	BLM	C10-C12	2.06	1.47	1.50

All angle outliers are listed below. They are sorted according to the Z-score.

Mol	Chain	Res	Type	Atoms	Z	Observed(°)	Ideal(°)
3	B	2402	BLM	C12-C10-NG	12.29	104.52	115.99
3	B	3402	BLM	C12-C10-NG	12.26	104.55	115.99
3	B	3402	BLM	C14-C13-NH	8.08	119.02	110.20
3	B	2402	BLM	C14-C13-NH	7.89	118.81	110.20
3	B	2402	BLM	C9-C10-C12	5.72	134.27	123.14
3	B	3402	BLM	C5-C6-C7	5.70	120.05	110.64
3	B	3402	BLM	C9-C10-C12	5.67	134.17	123.14
3	B	2402	BLM	C5-C6-C7	5.67	120.00	110.64
3	B	3402	BLM	C3-C2-C1	4.39	116.38	108.66
3	B	2402	BLM	C3-C2-C1	4.36	116.34	108.66
3	B	3402	BLM	O12-C12-C10	3.97	126.52	120.59
3	B	2402	BLM	O12-C12-C10	3.95	126.50	120.59
3	B	2402	BLM	O1-C1-NA	3.89	116.24	123.00
3	B	3402	BLM	O1-C1-NA	3.88	116.26	123.00
3	B	2402	BLM	C28-NI-C29	3.84	99.79	105.78
3	B	3402	BLM	C28-NI-C29	3.83	99.81	105.78
3	B	2402	BLM	O68-C70-O70	2.93	126.65	123.69
3	B	2402	BLM	O12-C12-NH	2.92	127.82	122.45
3	B	3402	BLM	O12-C12-NH	2.90	127.79	122.45
3	B	3402	BLM	O68-C70-O70	2.89	126.61	123.69
3	B	3402	BLM	C63-OH1-C14	2.77	119.51	114.99
3	B	2402	BLM	C63-OH1-C14	2.77	119.50	114.99
3	B	3402	BLM	CA-C9-C8	2.76	125.29	121.27

Continued on next page...

Continued from previous page...

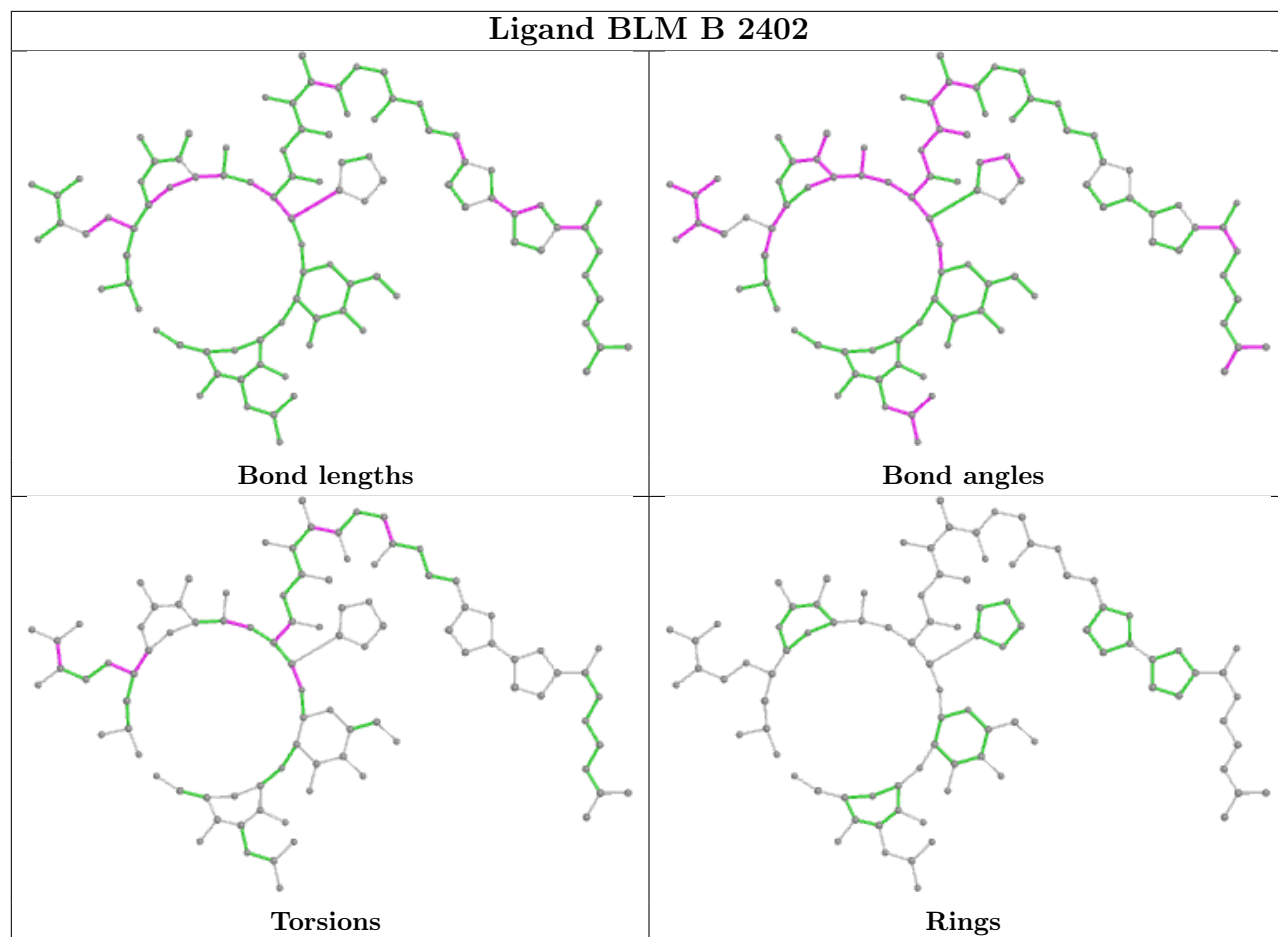
Mol	Chain	Res	Type	Atoms	Z	Observed(°)	Ideal(°)
3	B	2402	BLM	CA-C9-C8	2.72	125.25	121.27
3	B	3402	BLM	C48-C49-NP	2.66	119.30	115.59
3	B	2402	BLM	C48-C49-NP	2.64	119.28	115.59
3	B	2402	BLM	C13-C30-NK	2.60	122.09	116.48
3	B	2402	BLM	O70-C70-NQ	2.59	121.23	125.51
3	B	3402	BLM	O70-C70-NQ	2.55	121.31	125.51
3	B	3402	BLM	C13-C30-NK	2.50	121.88	116.48
3	B	2402	BLM	CB-C31-C33	2.49	109.39	112.30
3	B	2402	BLM	C33-C31-NK	2.34	114.09	109.56
3	B	2402	BLM	C33-C34-C36	2.31	112.91	109.37
3	B	3402	BLM	CB-C31-C33	2.25	109.67	112.30
3	B	3402	BLM	C33-C34-C36	2.21	112.77	109.37
3	B	2402	BLM	C9-C10-NG	2.19	120.97	123.31
3	B	3402	BLM	C33-C31-NK	2.19	113.80	109.56
3	B	3402	BLM	C54-S53-C55	2.13	98.69	101.49
3	B	3402	BLM	C9-C10-NG	2.12	121.05	123.31
3	B	3402	BLM	C13-NH-C12	2.10	117.73	121.52
3	B	2402	BLM	C13-NH-C12	2.08	117.76	121.52
3	B	2402	BLM	C1-C2-NB	2.05	117.28	109.45
3	B	3402	BLM	C1-C2-NB	2.05	117.27	109.45
3	B	3402	BLM	O1-C1-C2	2.05	123.30	120.30
3	B	2402	BLM	O1-C1-C2	2.04	123.29	120.30
3	B	2402	BLM	C2-C1-NA	2.04	120.18	116.68
3	B	2402	BLM	C54-S53-C55	2.03	98.82	101.49
3	B	3402	BLM	C2-C1-NA	2.02	120.15	116.68

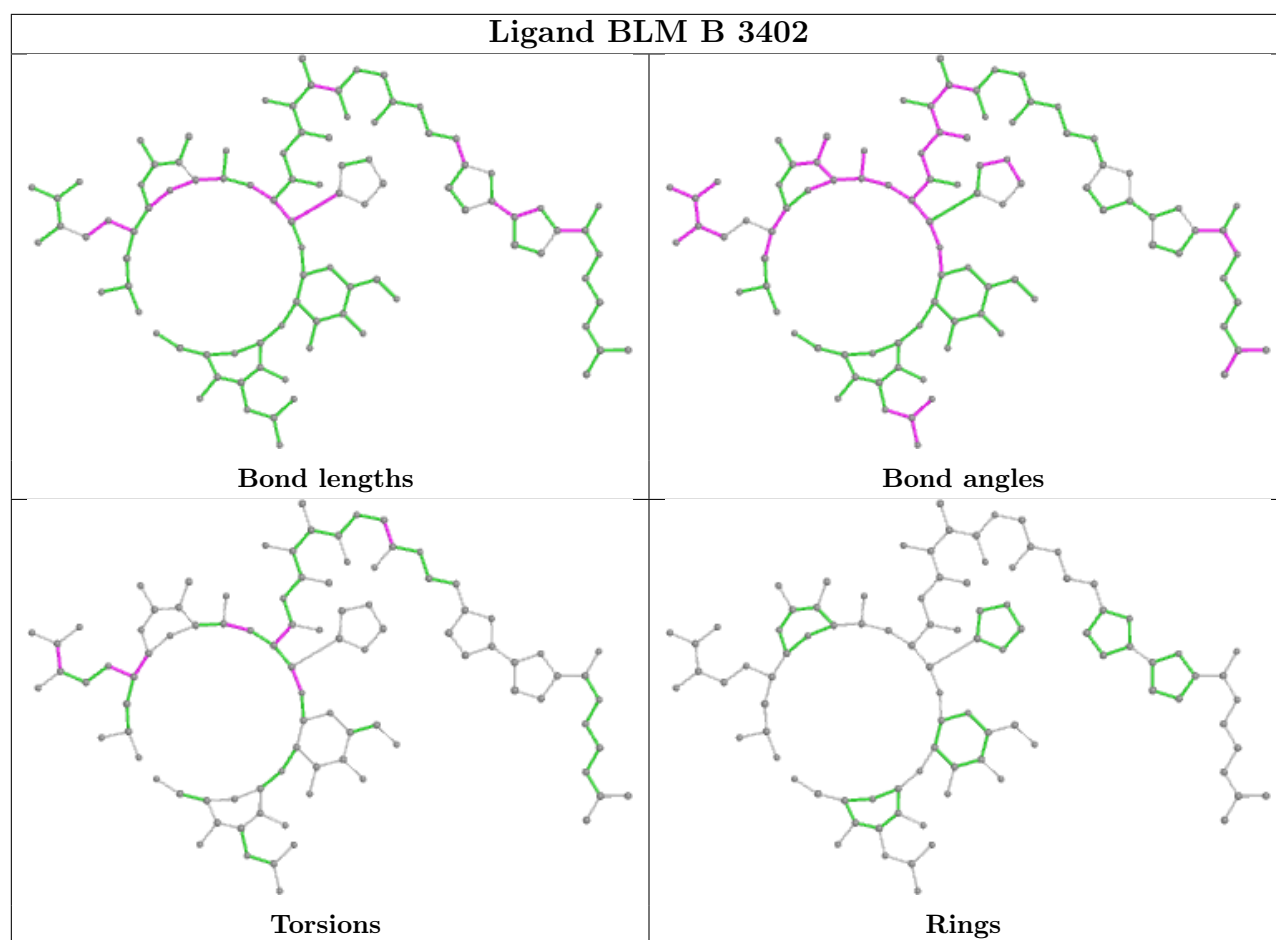
There are no chirality outliers.

There are no torsion outliers.

There are no ring outliers.

The following is a two-dimensional graphical depiction of Mogul quality analysis of bond lengths, bond angles, torsion angles, and ring geometry for all instances of the Ligand of Interest. In addition, ligands with molecular weight > 250 and outliers as shown on the validation Tables will also be included. For torsion angles, if less than 5% of the Mogul distribution of torsion angles is within 10 degrees of the torsion angle in question, then that torsion angle is considered an outlier. Any bond that is central to one or more torsion angles identified as an outlier by Mogul will be highlighted in the graph. For rings, the root-mean-square deviation (RMSD) between the ring in question and similar rings identified by Mogul is calculated over all ring torsion angles. If the average RMSD is greater than 60 degrees and the minimal RMSD between the ring in question and any Mogul-identified rings is also greater than 60 degrees, then that ring is considered an outlier. The outliers are highlighted in purple. The color gray indicates Mogul did not find sufficient equivalents in the CSD to analyse the geometry.





6.7 Other polymers [i](#)

There are no such molecules in this entry.

6.8 Polymer linkage issues [i](#)

There are no chain breaks in this entry.

7 Chemical shift validation

No chemical shift data were provided