



# wwPDB X-ray Structure Validation Summary Report ⓘ

Mar 13, 2023 – 06:21 pm GMT

PDB ID : 5MVM  
Title : X-ray structure of the F14'A -N15'A double mutant of GLIC in complex with propofol  
Authors : Fourati, Z.; Delarue, M.  
Deposited on : 2017-01-16  
Resolution : 3.10 Å(reported)

This is a wwPDB X-ray Structure Validation Summary Report for a publicly released PDB entry.

We welcome your comments at [validation@mail.wwpdb.org](mailto:validation@mail.wwpdb.org)

A user guide is available at

<https://www.wwpdb.org/validation/2017/XrayValidationReportHelp>

with specific help available everywhere you see the ⓘ symbol.

The types of validation reports are described at

<http://www.wwpdb.org/validation/2017/FAQs#types>.

---

The following versions of software and data (see [references ⓘ](#)) were used in the production of this report:

MolProbity : 4.02b-467  
Mogul : 1.8.4, CSD as541be (2020)  
Xtrriage (Phenix) : 1.13  
EDS : 2.32.1  
buster-report : 1.1.7 (2018)  
Percentile statistics : 20191225.v01 (using entries in the PDB archive December 25th 2019)  
Refmac : 5.8.0158  
CCP4 : 7.0.044 (Gargrove)  
Ideal geometry (proteins) : Engh & Huber (2001)  
Ideal geometry (DNA, RNA) : Parkinson et al. (1996)  
Validation Pipeline (wwPDB-VP) : 2.32.1

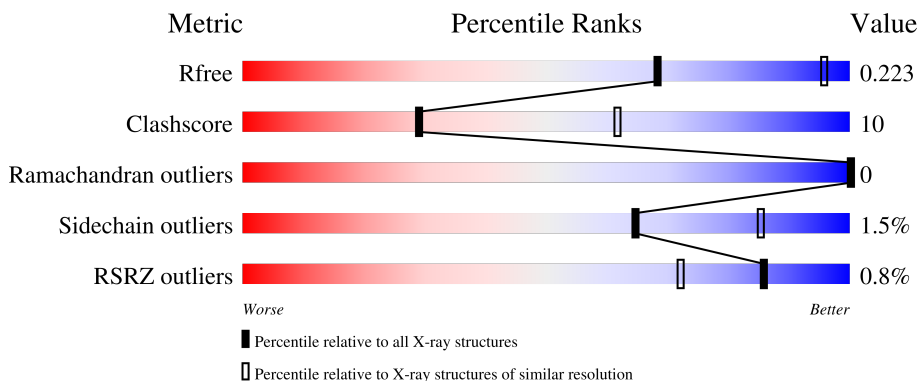
# 1 Overall quality at a glance

The following experimental techniques were used to determine the structure:

*X-RAY DIFFRACTION*

The reported resolution of this entry is 3.10 Å.

Percentile scores (ranging between 0-100) for global validation metrics of the entry are shown in the following graphic. The table shows the number of entries on which the scores are based.



Metric	Whole archive (#Entries)	Similar resolution (#Entries, resolution range(Å))
$R_{free}$	130704	1094 (3.10-3.10)
Clashscore	141614	1184 (3.10-3.10)
Ramachandran outliers	138981	1141 (3.10-3.10)
Sidechain outliers	138945	1141 (3.10-3.10)
RSRZ outliers	127900	1067 (3.10-3.10)

The table below summarises the geometric issues observed across the polymeric chains and their fit to the electron density. The red, orange, yellow and green segments of the lower bar indicate the fraction of residues that contain outliers for  $\geq 3$ , 2, 1 and 0 types of geometric quality criteria respectively. A grey segment represents the fraction of residues that are not modelled. The numeric value for each fraction is indicated below the corresponding segment, with a dot representing fractions  $\leq 5\%$ . The upper red bar (where present) indicates the fraction of residues that have poor fit to the electron density. The numeric value is given above the bar.

Mol	Chain	Length	Quality of chain
1	A	317	 2% 82% 16% .
1	B	317	 83% 15% .
1	C	317	 2% 85% 12% ..
1	D	317	 88% 10% .
1	E	317	 2% 80% 18% .

The following table lists non-polymeric compounds, carbohydrate monomers and non-standard residues in protein, DNA, RNA chains that are outliers for geometric or electron-density-fit criteria:

Mol	Type	Chain	Res	Chirality	Geometry	Clashes	Electron density
2	LMT	E	402	-	-	-	X
4	CL	B	503	-	-	-	X
5	NA	E	405	-	-	-	X
6	PLC	A	507	-	-	-	X
6	PLC	A	508	-	-	-	X
6	PLC	B	506	-	-	-	X
6	PLC	B	507	-	-	-	X
6	PLC	B	508	-	-	-	X
6	PLC	C	406	-	-	-	X
6	PLC	D	407	-	-	-	X
6	PLC	E	407	-	-	-	X
7	PFL	A	510	-	-	X	-
7	PFL	A	511	-	-	X	-
7	PFL	B	510	-	-	X	-
7	PFL	C	408	-	-	X	-
7	PFL	E	409	-	-	X	-

## 2 Entry composition

There are 8 unique types of molecules in this entry. The entry contains 13400 atoms, of which 0 are hydrogens and 0 are deuteriums.

In the tables below, the ZeroOcc column contains the number of atoms modelled with zero occupancy, the AltConf column contains the number of residues with at least one atom in alternate conformation and the Trace column contains the number of residues modelled with at most 2 atoms.

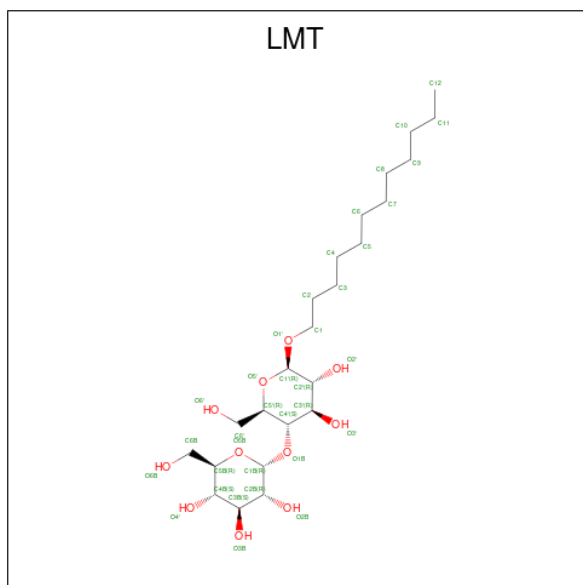
- Molecule 1 is a protein called Proton-gated ion channel.

Mol	Chain	Residues	Atoms					ZeroOcc	AltConf	Trace
			Total	C	N	O	S			
1	A	311	2534	1668	406	456	4	0	2	0
1	B	311	2525	1662	404	455	4	0	1	0
1	C	311	2525	1662	404	455	4	0	1	0
1	D	311	2533	1666	406	457	4	0	2	0
1	E	311	2536	1671	405	456	4	0	2	0

There are 10 discrepancies between the modelled and reference sequences:

Chain	Residue	Modelled	Actual	Comment	Reference
A	238	ALA	PHE	engineered mutation	UNP Q7NDN8
A	239	ALA	ASN	engineered mutation	UNP Q7NDN8
B	238	ALA	PHE	engineered mutation	UNP Q7NDN8
B	239	ALA	ASN	engineered mutation	UNP Q7NDN8
C	238	ALA	PHE	engineered mutation	UNP Q7NDN8
C	239	ALA	ASN	engineered mutation	UNP Q7NDN8
D	238	ALA	PHE	engineered mutation	UNP Q7NDN8
D	239	ALA	ASN	engineered mutation	UNP Q7NDN8
E	238	ALA	PHE	engineered mutation	UNP Q7NDN8
E	239	ALA	ASN	engineered mutation	UNP Q7NDN8

- Molecule 2 is DODECYL-BETA-D-MALTOSE (three-letter code: LMT) (formula: C<sub>24</sub>H<sub>46</sub>O<sub>11</sub>).



Mol	Chain	Residues	Atoms		ZeroOcc	AltConf
2	A	1	Total	C O	0	0
			14	13 1		
2	B	1	Total	C O	0	0
			14	13 1		
2	C	1	Total	C O	0	0
			14	13 1		
2	D	1	Total	C O	0	0
			14	13 1		
2	E	1	Total	C	0	0
			12	12		
2	E	1	Total	C O	0	0
			14	13 1		

- Molecule 3 is ACETATE ION (three-letter code: ACT) (formula: C<sub>2</sub>H<sub>3</sub>O<sub>2</sub>).



Mol	Chain	Residues	Atoms	ZeroOcc	AltConf
3	A	1	Total C O 4 2 2	0	0
3	A	1	Total C O 4 2 2	0	0
3	B	1	Total C O 4 2 2	0	0
3	B	1	Total C O 4 2 2	0	0
3	B	1	Total C O 4 2 2	0	0
3	C	1	Total C O 4 2 2	0	0
3	D	1	Total C O 4 2 2	0	0
3	D	1	Total C O 4 2 2	0	0
3	D	1	Total C O 4 2 2	0	0
3	E	1	Total C O 4 2 2	0	0

- Molecule 4 is CHLORIDE ION (three-letter code: CL) (formula: Cl).

Mol	Chain	Residues	Atoms	ZeroOcc	AltConf
4	A	1	Total Cl 1 1	0	0
4	B	1	Total Cl 1 1	0	0

*Continued on next page...*

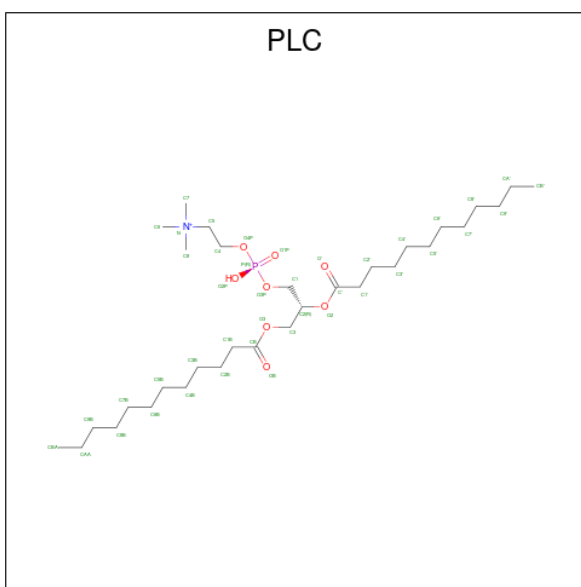
Continued from previous page...

Mol	Chain	Residues	Atoms	ZeroOcc	AltConf
4	C	1	Total Cl 1 1	0	0
4	D	1	Total Cl 1 1	0	0
4	E	1	Total Cl 1 1	0	0

- Molecule 5 is SODIUM ION (three-letter code: NA) (formula: Na).

Mol	Chain	Residues	Atoms	ZeroOcc	AltConf
5	A	2	Total Na 2 2	0	0
5	B	1	Total Na 1 1	0	0
5	C	1	Total Na 1 1	0	0
5	D	1	Total Na 1 1	0	0
5	E	2	Total Na 2 2	0	0

- Molecule 6 is DIUNDECYL PHOSPHATIDYL CHOLINE (three-letter code: PLC) (formula: C<sub>32</sub>H<sub>65</sub>NO<sub>8</sub>P).



Mol	Chain	Residues	Atoms	ZeroOcc	AltConf
6	A	1	Total C N O P 34 24 1 8 1	0	0

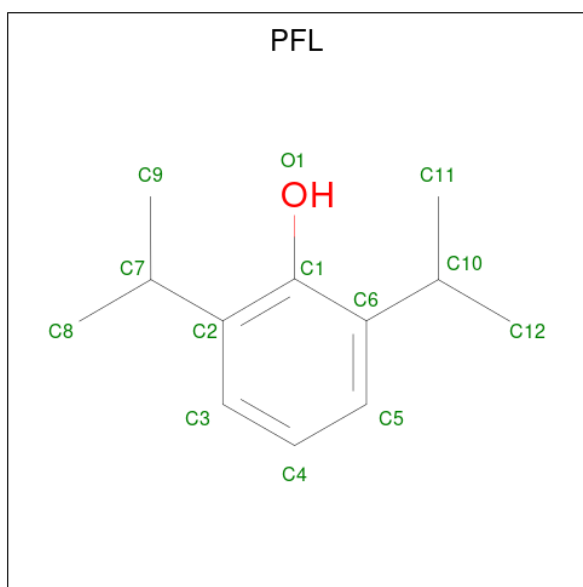
Continued on next page...

*Continued from previous page...*

Mol	Chain	Residues	Atoms	ZeroOcc	AltConf
6	A	1	Total C 24 24	0	0
6	A	1	Total C 12 12	0	0
6	B	1	Total C N O P 34 24 1 8 1	0	0
6	B	1	Total C 24 24	0	0
6	B	1	Total C 12 12	0	0
6	C	1	Total C N O P 34 24 1 8 1	0	0
6	C	1	Total C 24 24	0	0
6	C	1	Total C 12 12	0	0
6	D	1	Total C N O P 34 24 1 8 1	0	0
6	D	1	Total C 24 24	0	0
6	D	1	Total C 12 12	0	0
6	E	1	Total C N O P 34 24 1 8 1	0	0
6	E	1	Total C 24 24	0	0
6	E	1	Total C 12 12	0	0

- Molecule 7 is 2,6-BIS(1-METHYLETHYL)PHENOL (three-letter code: PFL) (formula: C<sub>12</sub>H<sub>18</sub>O).





Mol	Chain	Residues	Atoms		ZeroOcc	AltConf
7	A	1	Total	C O	0	0
			13	12 1		
7	A	1	Total	C O	0	0
			13	12 1		
7	B	1	Total	C O	0	0
			13	12 1		
7	C	1	Total	C O	0	0
			13	12 1		
7	E	1	Total	C O	0	0
			13	12 1		

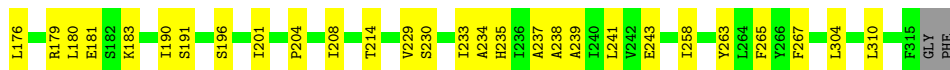
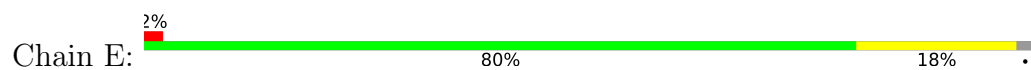
- Molecule 8 is water.

Mol	Chain	Residues	Atoms		ZeroOcc	AltConf
8	A	45	Total	O	0	0
			45	45		
8	B	43	Total	O	0	0
			43	43		
8	C	34	Total	O	0	0
			34	34		
8	D	42	Total	O	0	0
			42	42		
8	E	34	Total	O	0	0
			34	34		





- Molecule 1: Proton-gated ion channel



## 4 Data and refinement statistics

Property	Value	Source
Space group	C 1 2 1	Depositor
Cell constants a, b, c, $\alpha$ , $\beta$ , $\gamma$	181.76Å 132.51Å 160.52Å 90.00° 102.72° 90.00°	Depositor
Resolution (Å)	20.00 – 3.10 19.97 – 3.10	Depositor EDS
% Data completeness (in resolution range)	98.4 (20.00-3.10) 98.4 (19.97-3.10)	Depositor EDS
$R_{merge}$	(Not available)	Depositor
$R_{sym}$	(Not available)	Depositor
$\langle I/\sigma(I) \rangle$ <sup>1</sup>	1.59 (at 3.09Å)	Xtrriage
Refinement program	BUSTER 2.10.2	Depositor
R, $R_{free}$	0.195 , 0.208 0.212 , 0.223	Depositor DCC
$R_{free}$ test set	3345 reflections (5.06%)	wwPDB-VP
Wilson B-factor (Å <sup>2</sup> )	78.5	Xtrriage
Anisotropy	0.275	Xtrriage
Bulk solvent $k_{sol}$ (e/Å <sup>3</sup> ), $B_{sol}$ (Å <sup>2</sup> )	0.33 , 79.2	EDS
L-test for twinning <sup>2</sup>	$\langle  L  \rangle = 0.46$ , $\langle L^2 \rangle = 0.29$	Xtrriage
Estimated twinning fraction	No twinning to report.	Xtrriage
$F_o, F_c$ correlation	0.92	EDS
Total number of atoms	13400	wwPDB-VP
Average B, all atoms (Å <sup>2</sup> )	81.0	wwPDB-VP

Xtrriage's analysis on translational NCS is as follows: *The largest off-origin peak in the Patterson function is 3.92% of the height of the origin peak. No significant pseudotranslation is detected.*

<sup>1</sup>Intensities estimated from amplitudes.

<sup>2</sup>Theoretical values of  $\langle |L| \rangle$ ,  $\langle L^2 \rangle$  for acentric reflections are 0.5, 0.333 respectively for untwinned datasets, and 0.375, 0.2 for perfectly twinned datasets.

## 5 Model quality [i](#)

### 5.1 Standard geometry [i](#)

Bond lengths and bond angles in the following residue types are not validated in this section: NA, ACT, LMT, CL, PFL, PLC

The Z score for a bond length (or angle) is the number of standard deviations the observed value is removed from the expected value. A bond length (or angle) with  $|Z| > 5$  is considered an outlier worth inspection. RMSZ is the root-mean-square of all Z scores of the bond lengths (or angles).

Mol	Chain	Bond lengths		Bond angles	
		RMSZ	# Z  >5	RMSZ	# Z  >5
1	A	0.50	0/2601	0.68	0/3555
1	B	0.51	0/2592	0.70	0/3544
1	C	0.50	0/2592	0.69	0/3544
1	D	0.50	0/2600	0.69	0/3555
1	E	0.50	0/2604	0.69	0/3560
All	All	0.50	0/12989	0.69	0/17758

There are no bond length outliers.

There are no bond angle outliers.

There are no chirality outliers.

There are no planarity outliers.

### 5.2 Too-close contacts [i](#)

In the following table, the Non-H and H(model) columns list the number of non-hydrogen atoms and hydrogen atoms in the chain respectively. The H(added) column lists the number of hydrogen atoms added and optimized by MolProbity. The Clashes column lists the number of clashes within the asymmetric unit, whereas Symm-Clashes lists symmetry-related clashes.

Mol	Chain	Non-H	H(model)	H(added)	Clashes	Symm-Clashes
1	A	2534	0	2557	53	0
1	B	2525	0	2545	80	0
1	C	2525	0	2545	29	0
1	D	2533	0	2550	41	0
1	E	2536	0	2553	67	0
2	A	14	0	25	1	0
2	B	14	0	25	0	0
2	C	14	0	25	2	0

*Continued on next page...*

*Continued from previous page...*

Mol	Chain	Non-H	H(model)	H(added)	Clashes	Symm-Clashes
2	D	14	0	25	0	0
2	E	26	0	48	5	0
3	A	8	0	6	1	0
3	B	12	0	9	0	0
3	C	4	0	3	0	0
3	D	12	0	9	0	0
3	E	4	0	3	0	0
4	A	1	0	0	0	0
4	B	1	0	0	0	0
4	C	1	0	0	0	0
4	D	1	0	0	0	0
4	E	1	0	0	0	0
5	A	2	0	0	0	0
5	B	1	0	0	0	0
5	C	1	0	0	0	0
5	D	1	0	0	0	0
5	E	2	0	0	0	0
6	A	70	0	111	1	0
6	B	70	0	111	1	0
6	C	70	0	111	3	0
6	D	70	0	111	1	0
6	E	70	0	111	1	0
7	A	26	0	35	44	0
7	B	13	0	17	27	0
7	C	13	0	17	13	0
7	E	13	0	17	7	0
8	A	45	0	0	7	0
8	B	43	0	0	7	0
8	C	34	0	0	5	0
8	D	42	0	0	3	0
8	E	34	0	0	8	0
All	All	13400	0	13569	256	0

The all-atom clashscore is defined as the number of clashes found per 1000 atoms (including hydrogen atoms). The all-atom clashscore for this structure is 10.

The worst 5 of 256 close contacts within the same asymmetric unit are listed below, sorted by their clash magnitude.

Atom-1	Atom-2	Interatomic distance (Å)	Clash overlap (Å)
1:B:241:LEU:CD2	7:B:510:PFL:H82	1.33	1.55
1:D:207:PHE:HB3	1:E:267[B]:PHE:CE1	1.40	1.55

*Continued on next page...*

*Continued from previous page...*

Atom-1	Atom-2	Interatomic distance (Å)	Clash overlap (Å)
6:C:404:PLC:H73	8:C:516:HOH:O	1.15	1.31
1:E:265:PHE:HB3	8:E:518:HOH:O	1.17	1.28
7:A:511:PFL:C11	1:B:243:GLU:HG3	1.67	1.25

There are no symmetry-related clashes.

## 5.3 Torsion angles [i](#)

### 5.3.1 Protein backbone [i](#)

In the following table, the Percentiles column shows the percent Ramachandran outliers of the chain as a percentile score with respect to all X-ray entries followed by that with respect to entries of similar resolution.

The Analysed column shows the number of residues for which the backbone conformation was analysed, and the total number of residues.

Mol	Chain	Analysed	Favoured	Allowed	Outliers	Percentiles	
1	A	311/317 (98%)	298 (96%)	13 (4%)	0	100	100
1	B	310/317 (98%)	300 (97%)	10 (3%)	0	100	100
1	C	310/317 (98%)	299 (96%)	11 (4%)	0	100	100
1	D	311/317 (98%)	301 (97%)	10 (3%)	0	100	100
1	E	311/317 (98%)	301 (97%)	10 (3%)	0	100	100
All	All	1553/1585 (98%)	1499 (96%)	54 (4%)	0	100	100

There are no Ramachandran outliers to report.

### 5.3.2 Protein sidechains [i](#)

In the following table, the Percentiles column shows the percent sidechain outliers of the chain as a percentile score with respect to all X-ray entries followed by that with respect to entries of similar resolution.

The Analysed column shows the number of residues for which the sidechain conformation was analysed, and the total number of residues.

Mol	Chain	Analysed	Rotameric	Outliers	Percentiles	
1	A	280/282 (99%)	276 (99%)	4 (1%)	67	86

*Continued on next page...*

Continued from previous page...

Mol	Chain	Analysed	Rotameric	Outliers	Percentiles	
1	B	279/282 (99%)	277 (99%)	2 (1%)	84	93
1	C	279/282 (99%)	275 (99%)	4 (1%)	67	86
1	D	280/282 (99%)	275 (98%)	5 (2%)	59	82
1	E	280/282 (99%)	274 (98%)	6 (2%)	53	79
All	All	1398/1410 (99%)	1377 (98%)	21 (2%)	65	85

5 of 21 residues with a non-rotameric sidechain are listed below:

Mol	Chain	Res	Type
1	D	304	LEU
1	E	147	GLU
1	E	304	LEU
1	E	233	ILE
1	E	62	ARG

Sometimes sidechains can be flipped to improve hydrogen bonding and reduce clashes. All (1) such sidechains are listed below:

Mol	Chain	Res	Type
1	D	83	ASN

### 5.3.3 RNA [i](#)

There are no RNA molecules in this entry.

## 5.4 Non-standard residues in protein, DNA, RNA chains [i](#)

There are no non-standard protein/DNA/RNA residues in this entry.

## 5.5 Carbohydrates [i](#)

There are no monosaccharides in this entry.

## 5.6 Ligand geometry [i](#)

Of 48 ligands modelled in this entry, 12 are monoatomic - leaving 36 for Mogul analysis.

In the following table, the Counts columns list the number of bonds (or angles) for which Mogul statistics could be retrieved, the number of bonds (or angles) that are observed in the model and



the number of bonds (or angles) that are defined in the Chemical Component Dictionary. The Link column lists molecule types, if any, to which the group is linked. The Z score for a bond length (or angle) is the number of standard deviations the observed value is removed from the expected value. A bond length (or angle) with  $|Z| > 2$  is considered an outlier worth inspection. RMSZ is the root-mean-square of all Z scores of the bond lengths (or angles).

Mol	Type	Chain	Res	Link	Bond lengths			Bond angles		
					Counts	RMSZ	# Z  > 2	Counts	RMSZ	# Z  > 2
6	PLC	A	507	-	22,22,41	0.54	0	20,20,49	0.54	0
2	LMT	B	501	-	13,13,36	0.61	0	12,12,47	0.88	1 (8%)
3	ACT	B	502	-	3,3,3	0.98	0	3,3,3	1.02	0
6	PLC	B	507	-	22,22,41	0.56	0	20,20,49	0.48	0
3	ACT	D	409	-	3,3,3	1.47	0	3,3,3	0.54	0
7	PFL	E	409	-	13,13,13	0.21	0	18,18,18	0.50	0
2	LMT	C	407	-	13,13,36	0.69	0	12,12,47	0.59	0
7	PFL	A	510	-	13,13,13	0.33	0	18,18,18	0.76	0
6	PLC	C	406	-	11,11,41	0.43	0	10,10,49	0.68	0
6	PLC	C	405	-	22,22,41	0.60	0	20,20,49	0.46	0
7	PFL	C	408	-	13,13,13	0.28	0	18,18,18	0.49	0
2	LMT	A	501	-	13,13,36	0.67	0	12,12,47	0.50	0
6	PLC	C	404	-	33,33,41	1.00	2 (6%)	39,41,49	1.14	3 (7%)
3	ACT	E	403	-	3,3,3	0.96	0	3,3,3	0.77	0
6	PLC	B	508	-	11,11,41	0.46	0	10,10,49	0.62	0
3	ACT	D	404	-	3,3,3	1.32	0	3,3,3	0.58	0
6	PLC	E	407	-	22,22,41	0.61	0	20,20,49	0.51	0
2	LMT	D	401	-	13,13,36	0.77	0	12,12,47	0.50	0
6	PLC	E	406	-	33,33,41	1.06	2 (6%)	39,41,49	1.08	2 (5%)
3	ACT	C	401	-	3,3,3	1.26	0	3,3,3	0.89	0
3	ACT	A	502	-	3,3,3	0.99	0	3,3,3	0.85	0
6	PLC	A	506	-	33,33,41	1.04	2 (6%)	39,41,49	1.07	2 (5%)
6	PLC	B	506	-	33,33,41	1.11	2 (6%)	39,41,49	1.05	2 (5%)
2	LMT	E	402	-	13,13,36	0.76	0	12,12,47	0.49	0
7	PFL	A	511	-	13,13,13	0.51	0	18,18,18	0.65	1 (5%)
2	LMT	E	401	-	11,11,36	0.76	0	10,10,47	0.35	0
7	PFL	B	510	-	13,13,13	0.42	0	18,18,18	0.72	0
6	PLC	D	407	-	22,22,41	0.55	0	20,20,49	0.48	0
6	PLC	D	408	-	11,11,41	0.39	0	10,10,49	0.64	0
3	ACT	B	504	-	3,3,3	1.42	0	3,3,3	0.58	0
6	PLC	D	406	-	33,33,41	1.09	3 (9%)	39,41,49	1.09	2 (5%)
3	ACT	B	509	-	3,3,3	1.46	0	3,3,3	0.41	0
6	PLC	A	508	-	11,11,41	0.45	0	10,10,49	0.62	0
3	ACT	D	402	-	3,3,3	1.25	0	3,3,3	0.69	0
3	ACT	A	504	-	3,3,3	1.26	0	3,3,3	0.43	0
6	PLC	E	408	-	11,11,41	0.44	0	10,10,49	0.61	0

In the following table, the Chirals column lists the number of chiral outliers, the number of chiral centers analysed, the number of these observed in the model and the number defined in the Chemical Component Dictionary. Similar counts are reported in the Torsion and Rings columns. '-' means no outliers of that kind were identified.

Mol	Type	Chain	Res	Link	Chirals	Torsions	Rings
6	PLC	A	507	-	-	6/18/18/45	-
2	LMT	B	501	-	-	2/11/11/61	-
6	PLC	B	507	-	-	6/18/18/45	-
7	PFL	E	409	-	-	0/8/8/8	0/1/1/1
2	LMT	C	407	-	-	0/11/11/61	-
7	PFL	A	510	-	-	3/8/8/8	0/1/1/1
6	PLC	C	406	-	-	1/9/9/45	-
7	PFL	C	408	-	-	0/8/8/8	0/1/1/1
2	LMT	A	501	-	-	1/11/11/61	-
6	PLC	C	404	-	-	23/37/37/45	-
6	PLC	B	508	-	-	1/9/9/45	-
6	PLC	E	407	-	-	8/18/18/45	-
2	LMT	D	401	-	-	0/11/11/61	-
6	PLC	E	406	-	-	20/37/37/45	-
6	PLC	A	506	-	-	20/37/37/45	-
6	PLC	B	506	-	-	22/37/37/45	-
7	PFL	A	511	-	-	3/8/8/8	0/1/1/1
2	LMT	E	401	-	-	0/9/9/61	-
7	PFL	B	510	-	-	6/8/8/8	0/1/1/1
6	PLC	D	407	-	-	8/18/18/45	-
6	PLC	D	408	-	-	0/9/9/45	-
6	PLC	D	406	-	-	21/37/37/45	-
6	PLC	A	508	-	-	1/9/9/45	-
6	PLC	C	405	-	-	6/18/18/45	-
2	LMT	E	402	-	-	1/11/11/61	-
6	PLC	E	408	-	-	1/9/9/45	-

The worst 5 of 11 bond length outliers are listed below:

Mol	Chain	Res	Type	Atoms	Z	Observed(Å)	Ideal(Å)
6	D	406	PLC	O2-C'	3.00	1.42	1.34
6	B	506	PLC	O2-C'	2.89	1.42	1.34
6	E	406	PLC	O2-C'	2.79	1.42	1.34
6	A	506	PLC	O2-C'	2.62	1.41	1.34
6	C	404	PLC	O2-C'	2.52	1.41	1.34

The worst 5 of 13 bond angle outliers are listed below:

Mol	Chain	Res	Type	Atoms	Z	Observed(°)	Ideal(°)
6	D	406	PLC	C2-O2-C'	4.27	128.31	117.79
6	A	506	PLC	C2-O2-C'	3.78	127.10	117.79
6	C	404	PLC	C2-O2-C'	3.78	127.09	117.79
6	B	506	PLC	C2-O2-C'	3.77	127.08	117.79
6	E	406	PLC	C2-O2-C'	3.58	126.61	117.79

There are no chirality outliers.

5 of 160 torsion outliers are listed below:

Mol	Chain	Res	Type	Atoms
6	A	506	PLC	C1'-C'-O2-C2
6	A	506	PLC	C1-O3P-P-O1P
6	A	506	PLC	C1-O3P-P-O4P
6	B	506	PLC	C1'-C'-O2-C2
6	B	506	PLC	C1-O3P-P-O1P

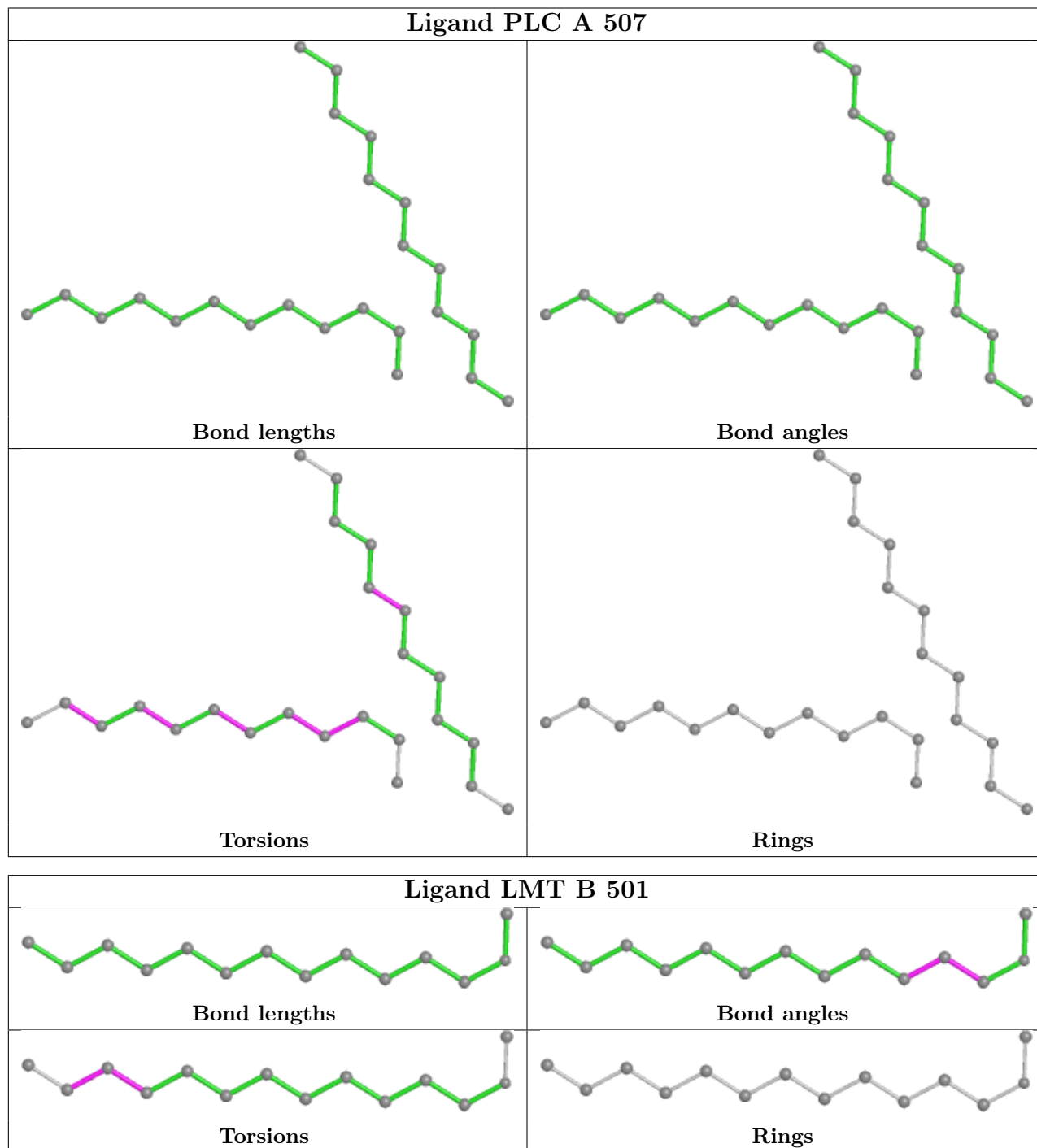
There are no ring outliers.

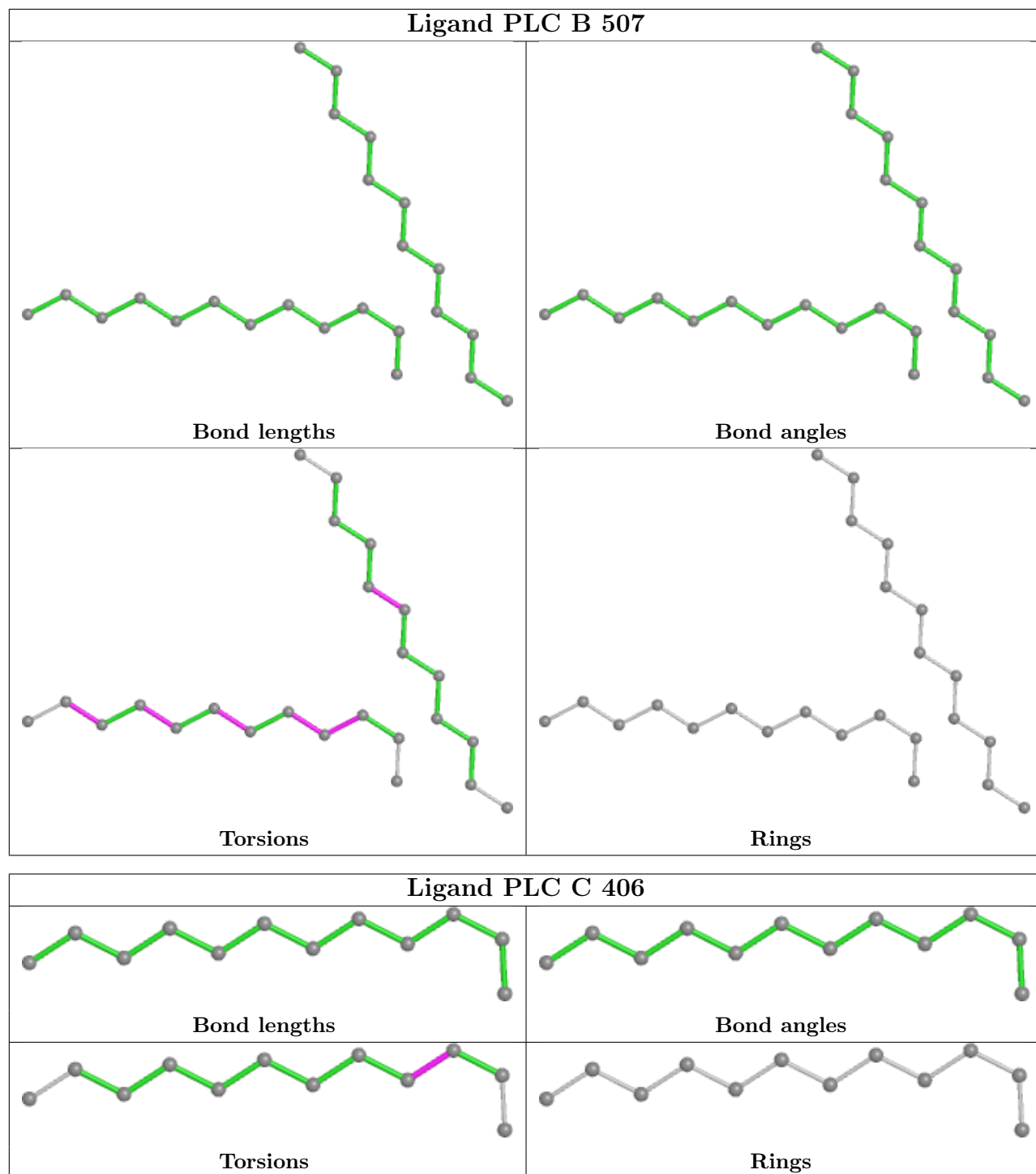
16 monomers are involved in 105 short contacts:

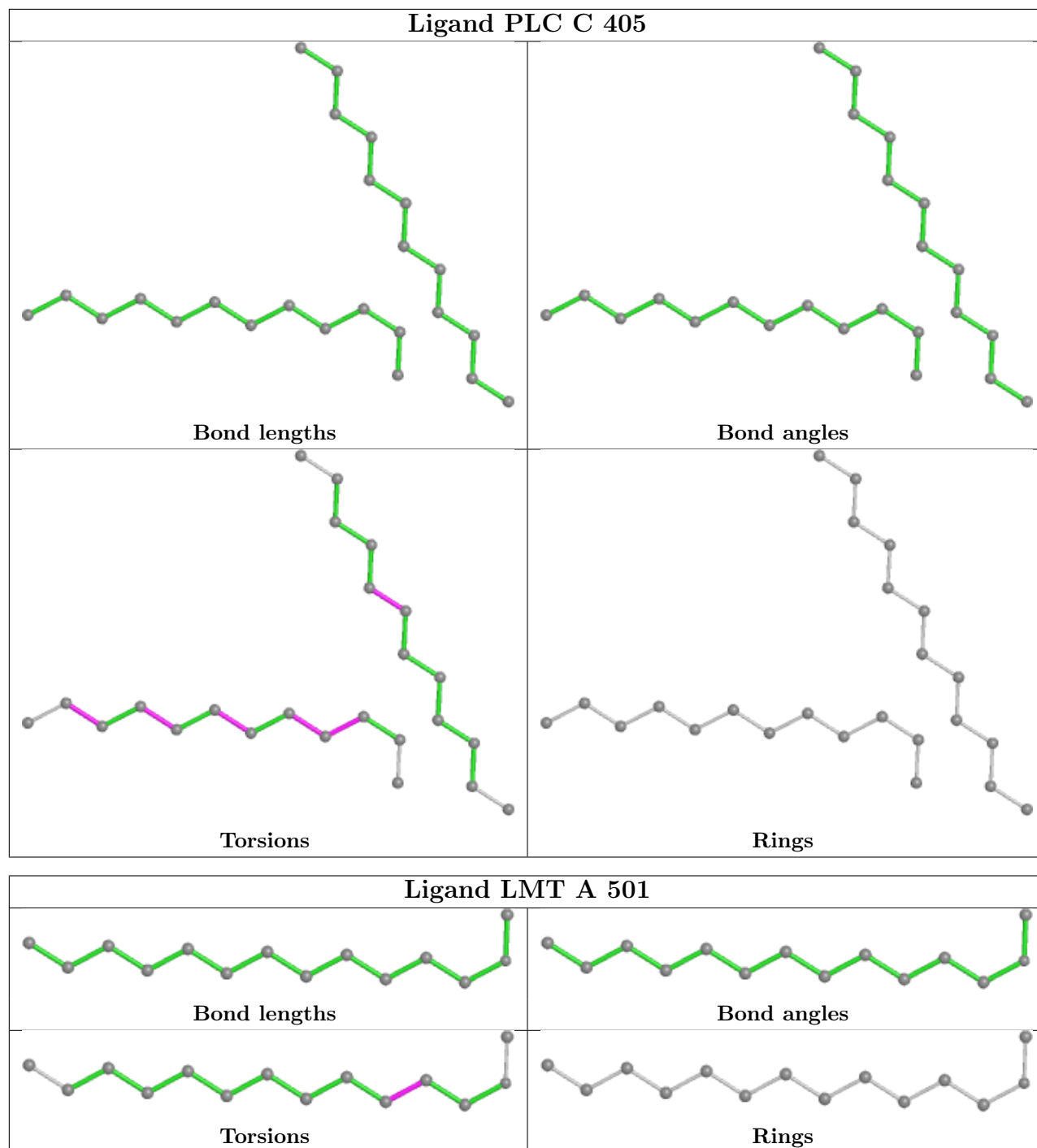
Mol	Chain	Res	Type	Clashes	Symm-Clashes
6	A	507	PLC	1	0
6	B	507	PLC	1	0
7	E	409	PFL	7	0
2	C	407	LMT	2	0
7	A	510	PFL	19	0
6	C	405	PLC	1	0
7	C	408	PFL	13	0
2	A	501	LMT	1	0
6	C	404	PLC	2	0
6	E	407	PLC	1	0
2	E	402	LMT	3	0
7	A	511	PFL	25	0
2	E	401	LMT	3	0
7	B	510	PFL	27	0
6	D	407	PLC	1	0
3	A	504	ACT	1	0

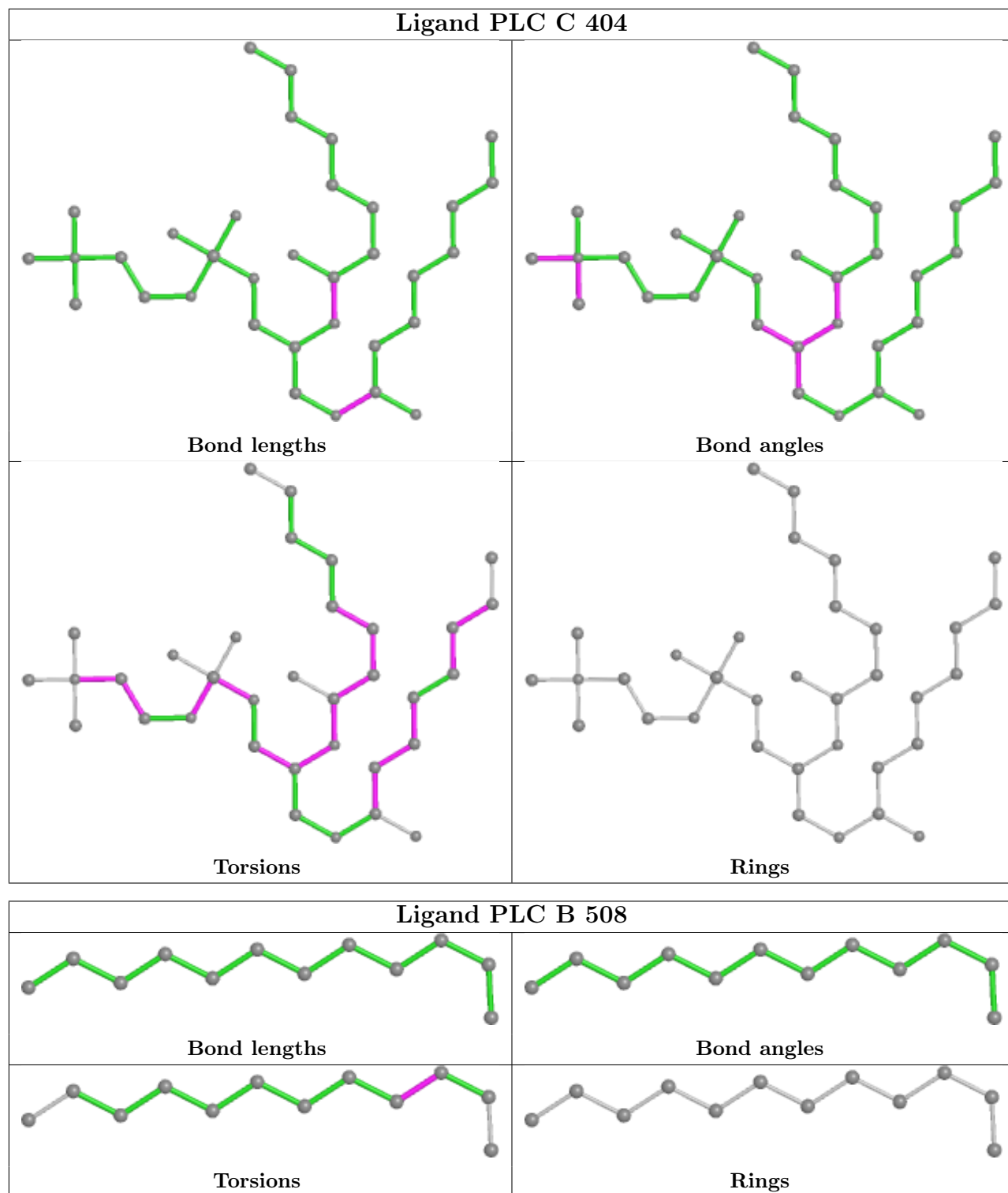
The following is a two-dimensional graphical depiction of Mogul quality analysis of bond lengths, bond angles, torsion angles, and ring geometry for all instances of the Ligand of Interest. In addition, ligands with molecular weight > 250 and outliers as shown on the validation Tables will also be included. For torsion angles, if less than 5% of the Mogul distribution of torsion angles is

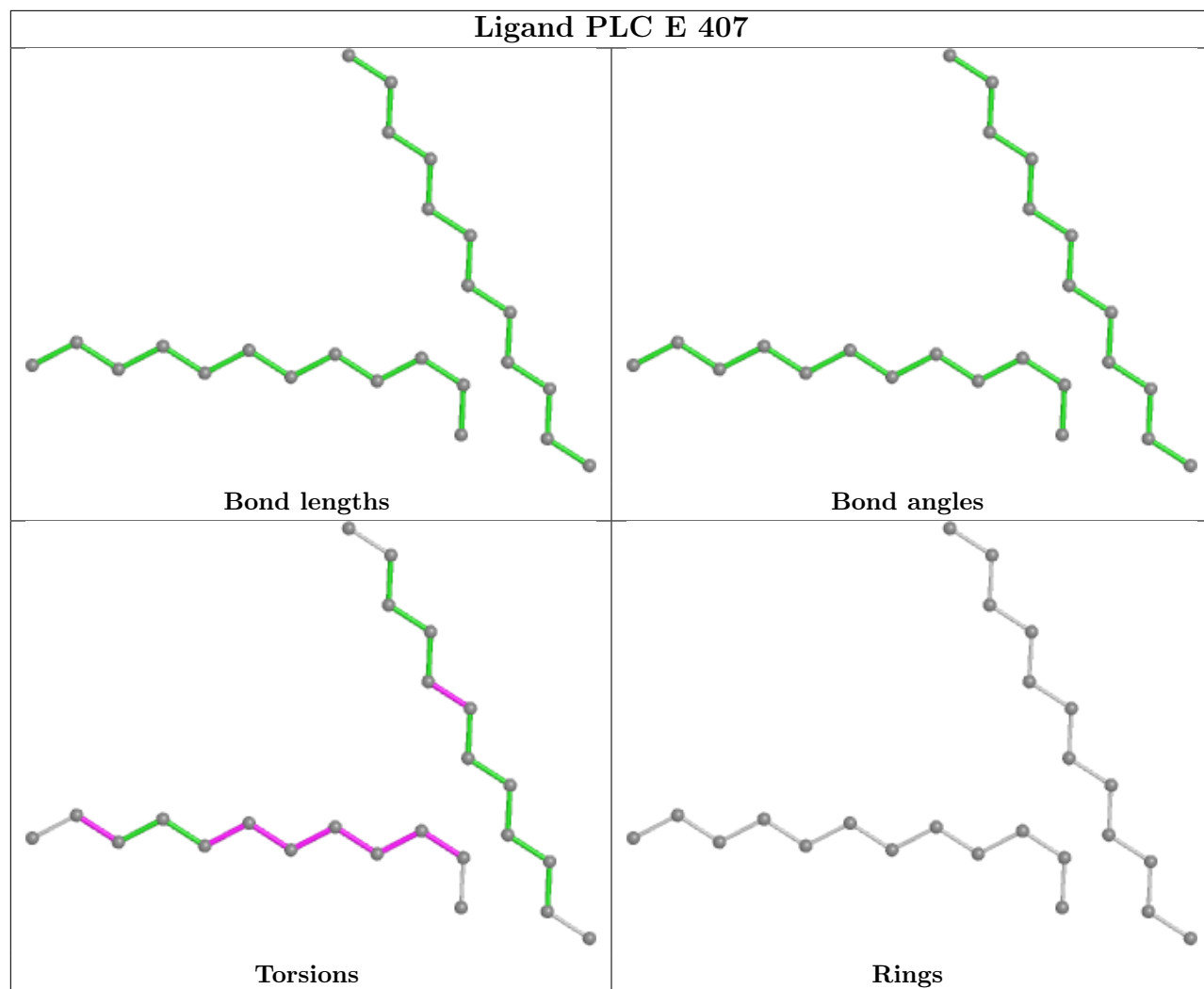
within 10 degrees of the torsion angle in question, then that torsion angle is considered an outlier. Any bond that is central to one or more torsion angles identified as an outlier by Mogul will be highlighted in the graph. For rings, the root-mean-square deviation (RMSD) between the ring in question and similar rings identified by Mogul is calculated over all ring torsion angles. If the average RMSD is greater than 60 degrees and the minimal RMSD between the ring in question and any Mogul-identified rings is also greater than 60 degrees, then that ring is considered an outlier. The outliers are highlighted in purple. The color gray indicates Mogul did not find sufficient equivalents in the CSD to analyse the geometry.



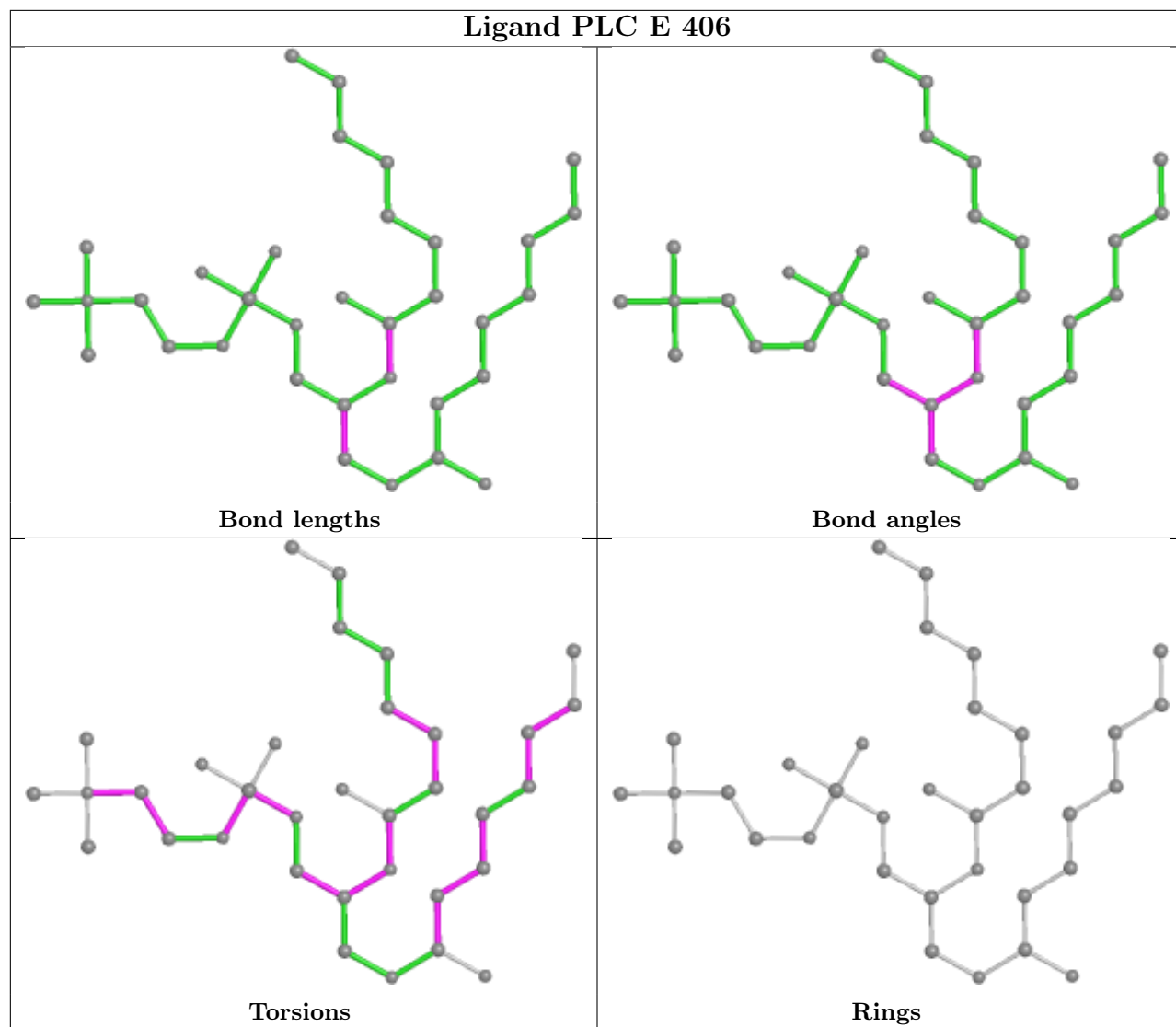


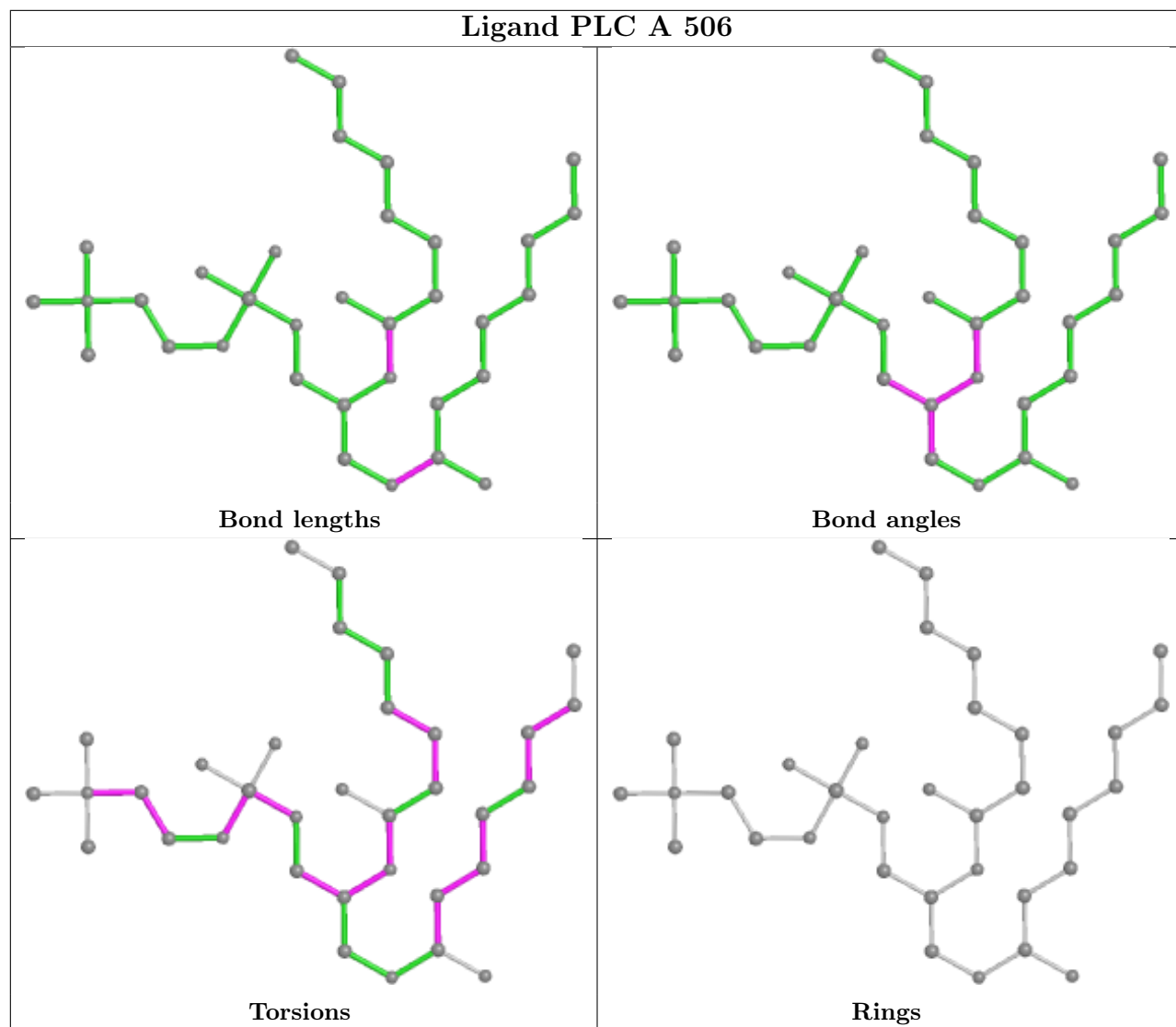


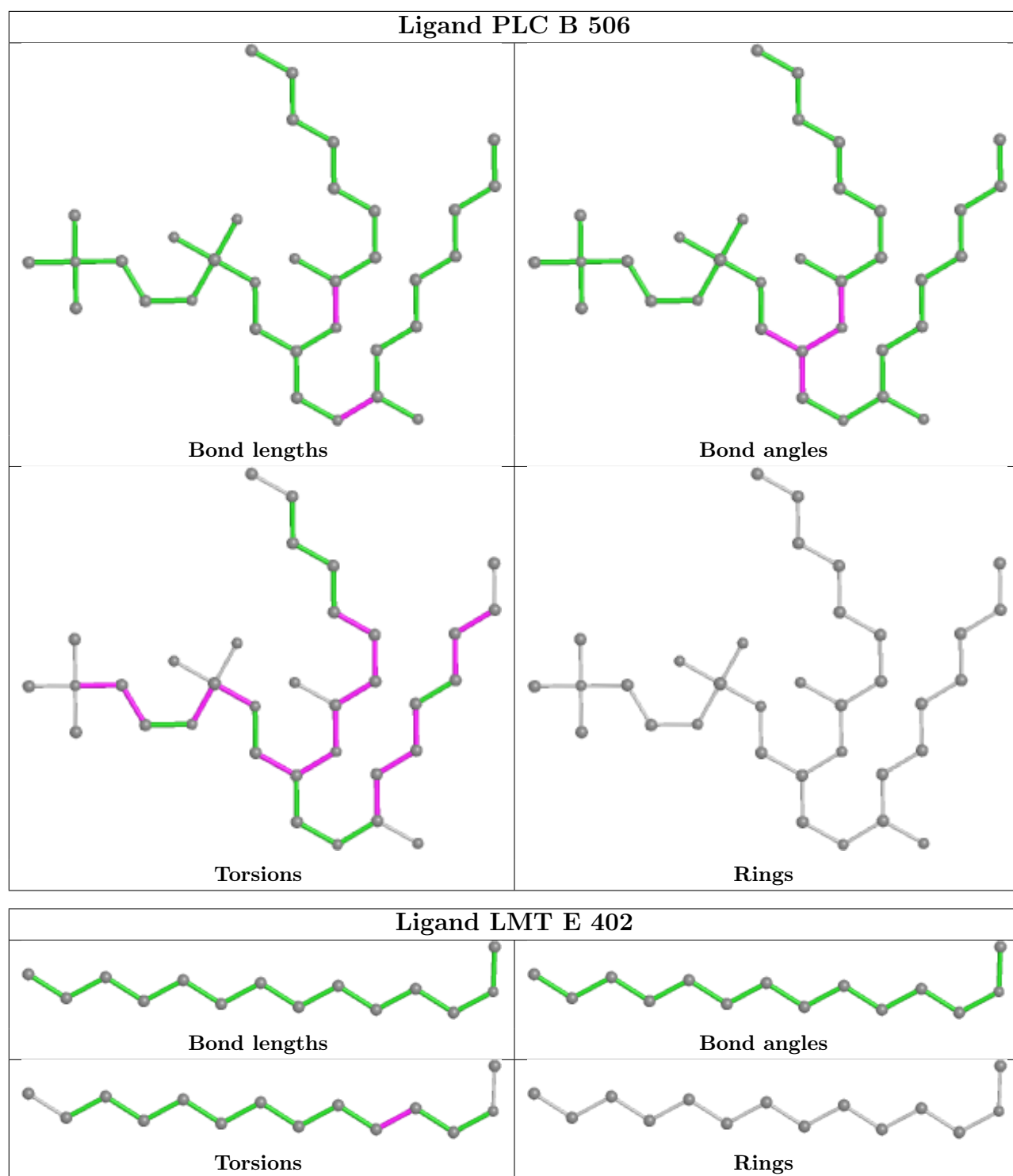


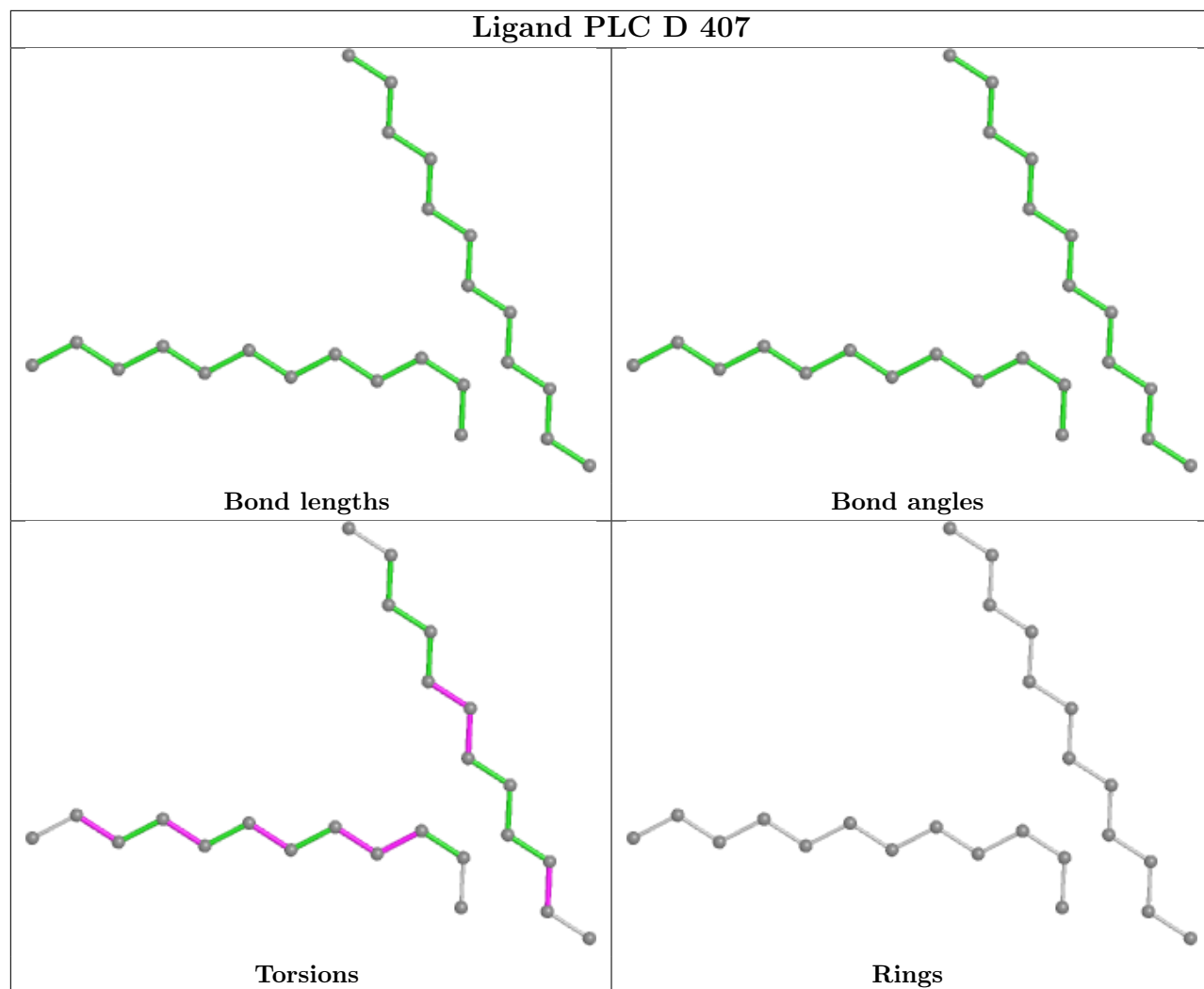


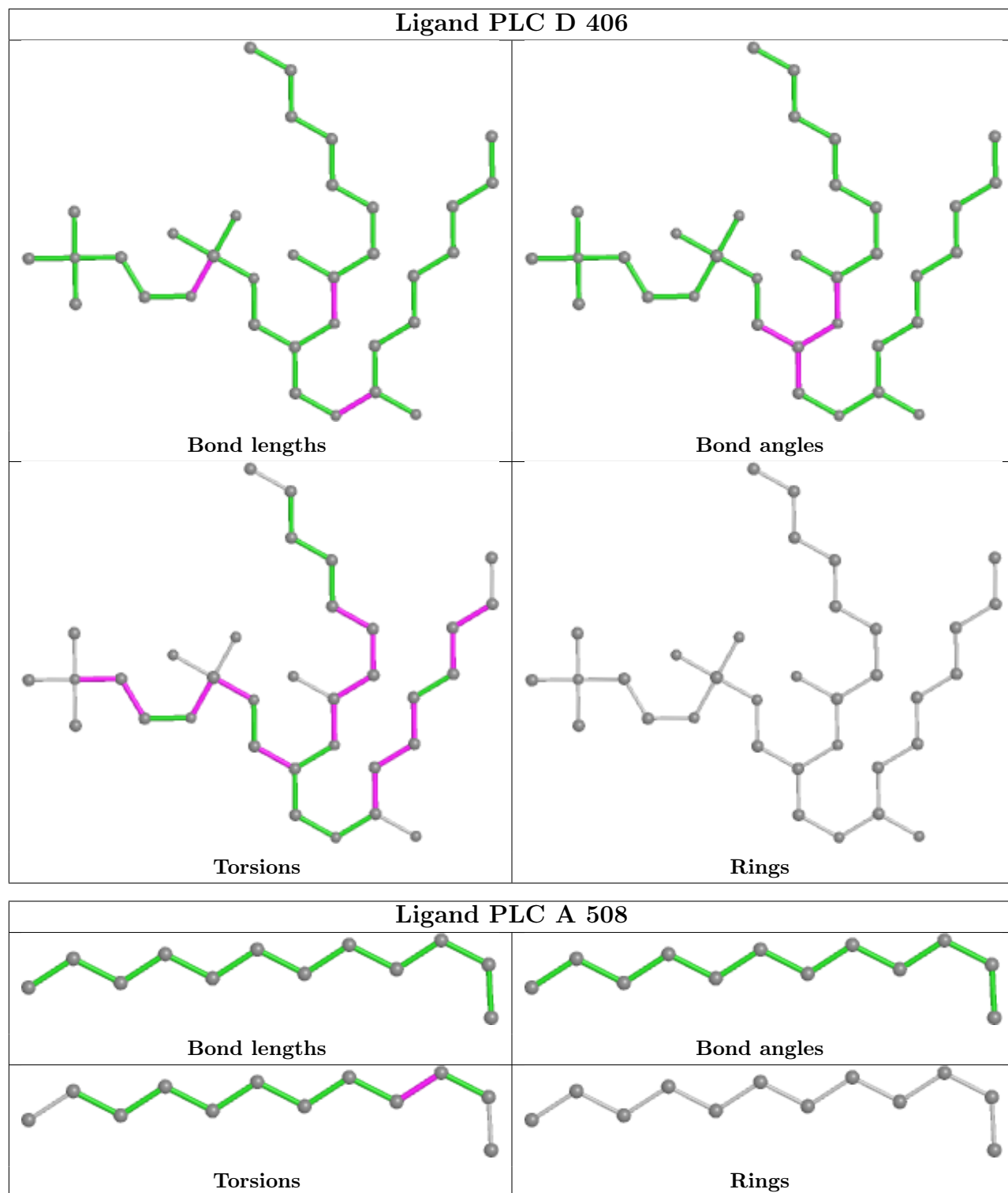


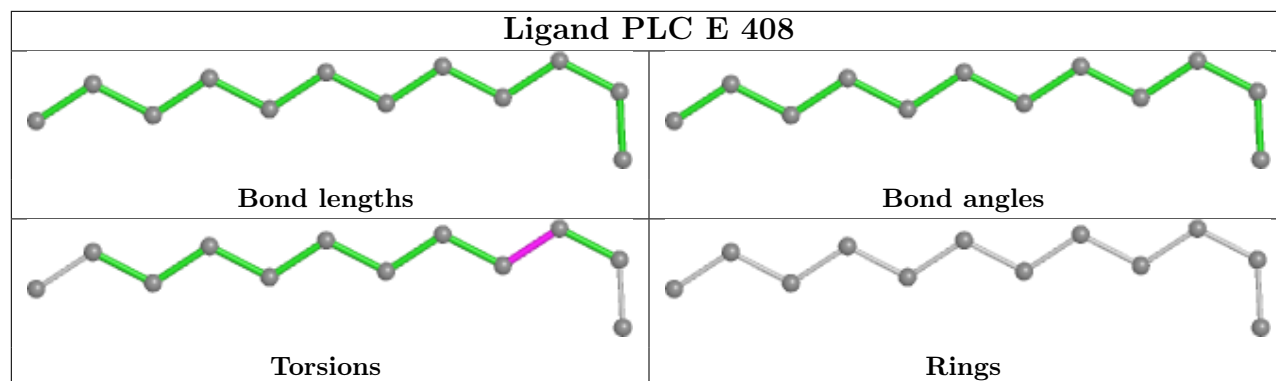












## 5.7 Other polymers [i](#)

There are no such residues in this entry.

## 5.8 Polymer linkage issues [i](#)

There are no chain breaks in this entry.

## 6 Fit of model and data [i](#)

### 6.1 Protein, DNA and RNA chains [i](#)

In the following table, the column labelled ‘#RSRZ > 2’ contains the number (and percentage) of RSRZ outliers, followed by percent RSRZ outliers for the chain as percentile scores relative to all X-ray entries and entries of similar resolution. The OWAB column contains the minimum, median, 95<sup>th</sup> percentile and maximum values of the occupancy-weighted average B-factor per residue. The column labelled ‘Q < 0.9’ lists the number of (and percentage) of residues with an average occupancy less than 0.9.

Mol	Chain	Analysed	<RSRZ>	#RSRZ>2	OWAB(Å <sup>2</sup> )	Q<0.9
1	A	311/317 (98%)	-0.40	3 (0%) 82 67	53, 76, 122, 170	0
1	B	311/317 (98%)	-0.45	0 100 100	52, 75, 110, 146	0
1	C	311/317 (98%)	-0.37	4 (1%) 77 59	51, 76, 119, 168	0
1	D	311/317 (98%)	-0.43	1 (0%) 94 88	52, 75, 119, 173	0
1	E	311/317 (98%)	-0.39	5 (1%) 72 51	53, 77, 117, 157	0
All	All	1555/1585 (98%)	-0.41	13 (0%) 86 72	51, 76, 118, 173	0

The worst 5 of 13 RSRZ outliers are listed below:

Mol	Chain	Res	Type	RSRZ
1	C	58	ARG	4.2
1	E	58	ARG	3.8
1	A	57	VAL	3.3
1	D	283	SER	3.2
1	C	13	ASP	3.1

### 6.2 Non-standard residues in protein, DNA, RNA chains [i](#)

There are no non-standard protein/DNA/RNA residues in this entry.

### 6.3 Carbohydrates [i](#)

There are no monosaccharides in this entry.

### 6.4 Ligands [i](#)

In the following table, the Atoms column lists the number of modelled atoms in the group and the number defined in the chemical component dictionary. The B-factors column lists the minimum,

median, 95<sup>th</sup> percentile and maximum values of B factors of atoms in the group. The column labelled 'Q< 0.9' lists the number of atoms with occupancy less than 0.9.

Mol	Type	Chain	Res	Atoms	RSCC	RSR	B-factors(Å <sup>2</sup> )	Q<0.9
5	NA	B	505	1/1	0.49	0.39	70,70,70,70	0
5	NA	E	405	1/1	0.52	0.59	72,72,72,72	0
2	LMT	E	402	14/35	0.54	0.45	71,84,102,103	0
2	LMT	C	407	14/35	0.66	0.37	56,76,102,103	0
2	LMT	A	501	14/35	0.69	0.39	62,76,110,110	0
6	PLC	B	506	34/42	0.69	0.43	95,130,172,174	0
5	NA	E	410	1/1	0.71	0.36	92,92,92,92	0
4	CL	B	503	1/1	0.72	0.55	168,168,168,168	0
6	PLC	A	507	24/42	0.73	0.50	78,100,120,121	0
6	PLC	C	405	24/42	0.73	0.38	78,91,101,102	0
6	PLC	E	407	24/42	0.73	0.46	75,90,112,112	0
6	PLC	B	508	12/42	0.74	0.44	101,102,116,117	0
6	PLC	C	406	12/42	0.74	0.57	98,102,110,110	0
6	PLC	D	406	34/42	0.74	0.37	85,129,164,165	0
6	PLC	C	404	34/42	0.74	0.36	85,123,169,170	0
7	PFL	B	510	13/13	0.74	0.34	138,139,141,142	13
6	PLC	B	507	24/42	0.75	0.46	83,93,107,108	0
6	PLC	D	407	24/42	0.76	0.51	83,104,111,113	0
6	PLC	A	506	34/42	0.77	0.38	89,132,174,175	0
7	PFL	A	510	13/13	0.77	0.37	120,128,130,130	0
6	PLC	D	408	12/42	0.77	0.31	89,90,113,114	0
2	LMT	B	501	14/35	0.78	0.31	74,86,103,103	0
6	PLC	E	406	34/42	0.80	0.40	85,132,170,171	0
6	PLC	A	508	12/42	0.80	0.44	91,95,105,105	0
2	LMT	D	401	14/35	0.81	0.29	77,81,101,102	0
6	PLC	E	408	12/42	0.81	0.48	94,96,111,112	0
7	PFL	C	408	13/13	0.81	0.37	145,149,152,154	0
7	PFL	E	409	13/13	0.81	0.56	144,149,152,154	0
5	NA	A	509	1/1	0.82	0.20	82,82,82,82	0
5	NA	A	505	1/1	0.84	0.16	74,74,74,74	0
5	NA	D	405	1/1	0.86	0.08	81,81,81,81	0
7	PFL	A	511	13/13	0.87	0.34	131,139,142,143	0
2	LMT	E	401	12/35	0.87	0.28	74,83,89,90	0
4	CL	C	402	1/1	0.92	0.15	82,82,82,82	0
5	NA	C	403	1/1	0.94	0.14	72,72,72,72	0
4	CL	D	403	1/1	0.94	0.13	68,68,68,68	0
3	ACT	D	409	4/4	0.94	0.14	70,71,72,74	0
3	ACT	C	401	4/4	0.95	0.17	70,73,73,74	0
3	ACT	A	502	4/4	0.95	0.16	65,68,69,72	0
3	ACT	B	504	4/4	0.96	0.18	81,86,87,87	0

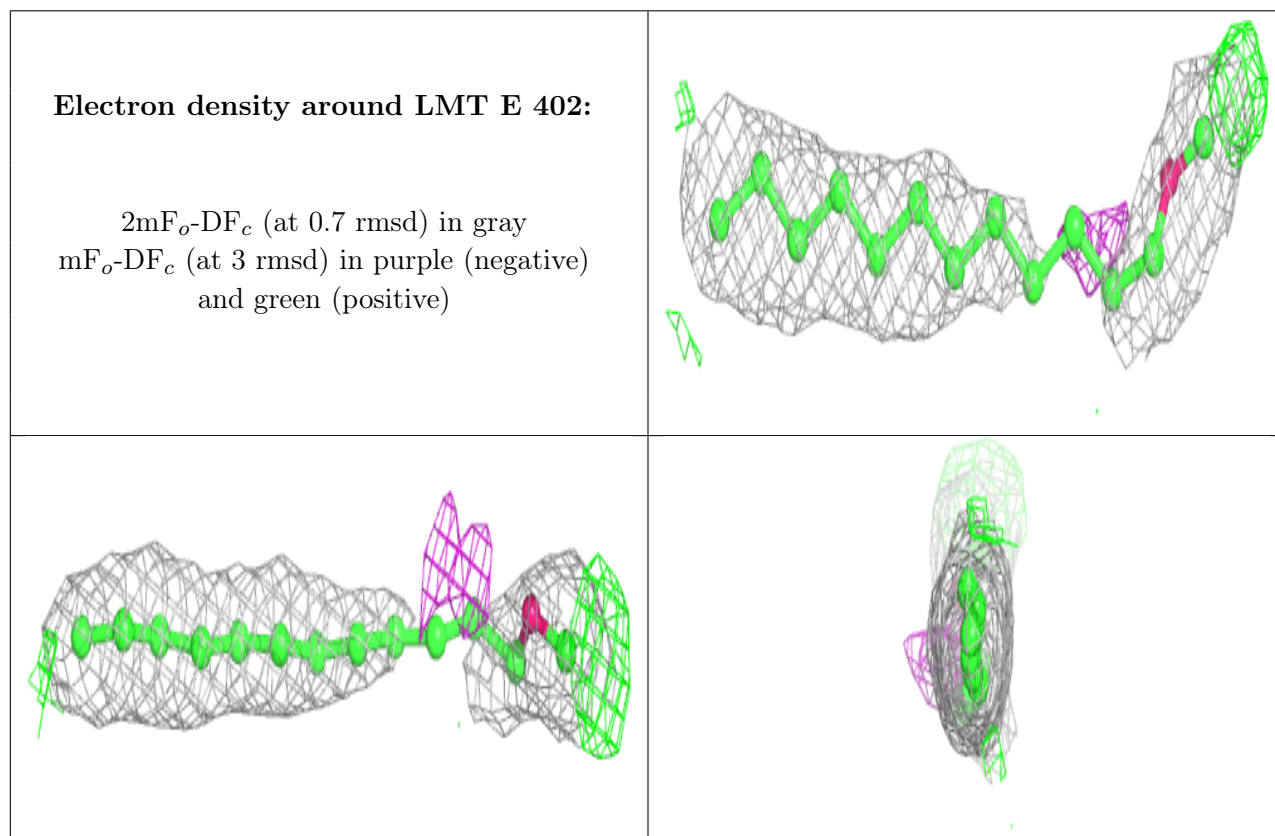
*Continued on next page...*



Continued from previous page...

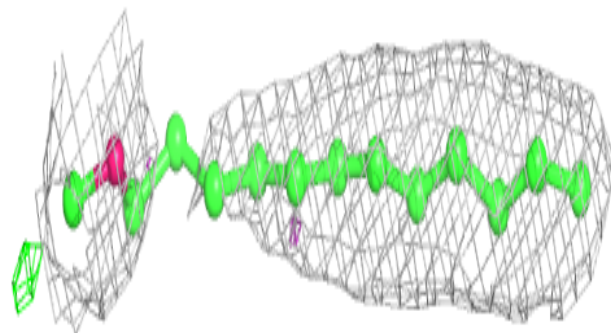
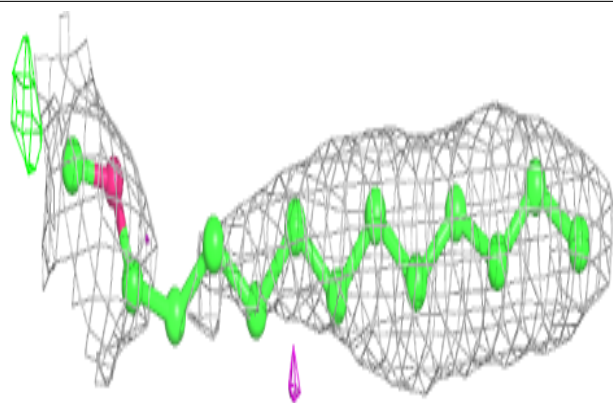
Mol	Type	Chain	Res	Atoms	RSCC	RSR	B-factors( $\text{\AA}^2$ )	Q<0.9
3	ACT	E	403	4/4	0.96	0.20	83,86,87,89	0
3	ACT	B	502	4/4	0.96	0.32	77,79,80,80	0
3	ACT	D	404	4/4	0.96	0.23	64,65,65,65	0
3	ACT	B	509	4/4	0.97	0.13	74,74,76,79	0
3	ACT	A	504	4/4	0.98	0.10	69,71,72,74	0
3	ACT	D	402	4/4	0.98	0.13	64,64,65,65	0
4	CL	E	404	1/1	0.98	0.13	72,72,72,72	0
4	CL	A	503	1/1	0.99	0.14	73,73,73,73	0

The following is a graphical depiction of the model fit to experimental electron density of all instances of the Ligand of Interest. In addition, ligands with molecular weight > 250 and outliers as shown on the geometry validation Tables will also be included. Each fit is shown from different orientation to approximate a three-dimensional view.

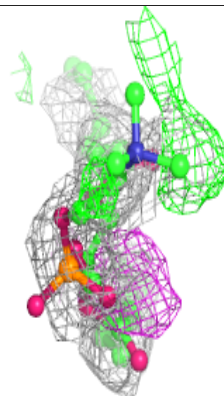
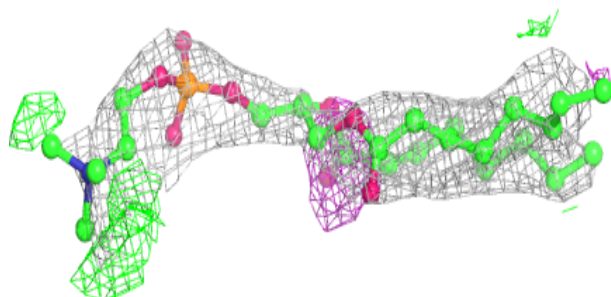
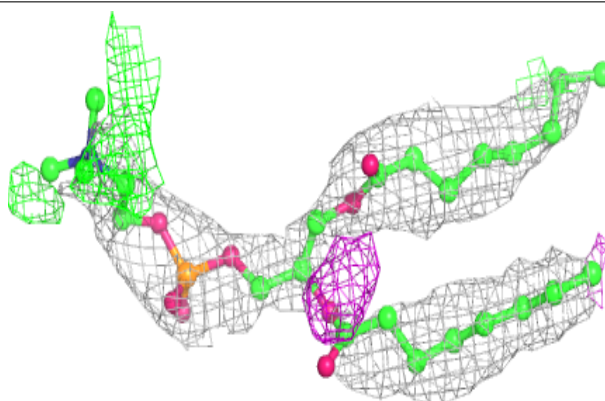


**Electron density around LMT A 501:**

$2mF_o-DF_c$  (at 0.7 rmsd) in gray  
 $mF_o-DF_c$  (at 3 rmsd) in purple (negative)  
and green (positive)

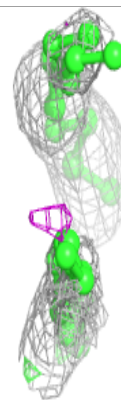
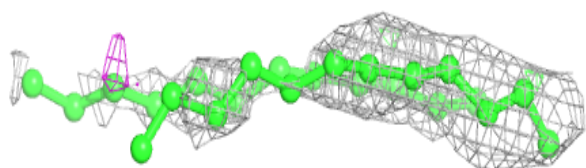
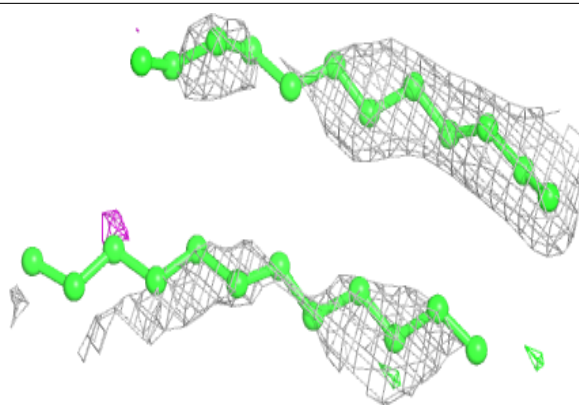
**Electron density around PLC B 506:**

$2mF_o-DF_c$  (at 0.7 rmsd) in gray  
 $mF_o-DF_c$  (at 3 rmsd) in purple (negative)  
and green (positive)

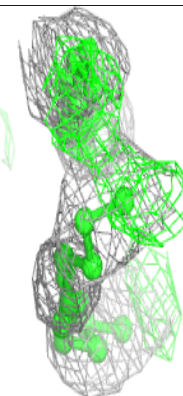
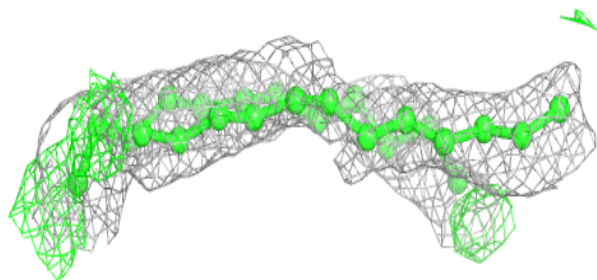
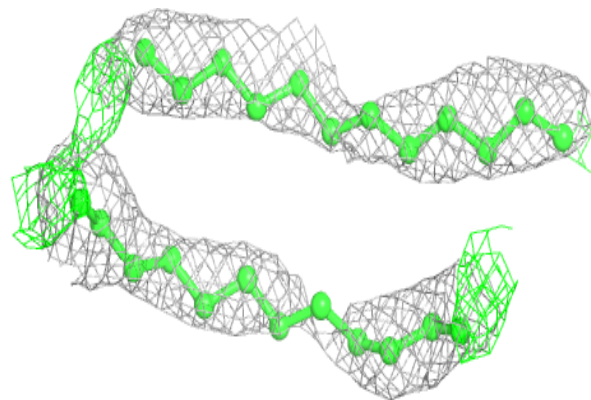


**Electron density around PLC A 507:**

$2mF_o-DF_c$  (at 0.7 rmsd) in gray  
 $mF_o-DF_c$  (at 3 rmsd) in purple (negative)  
and green (positive)

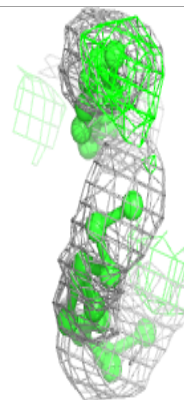
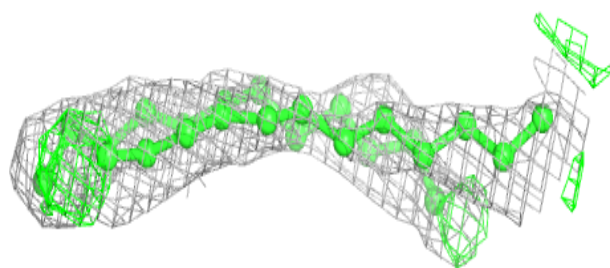
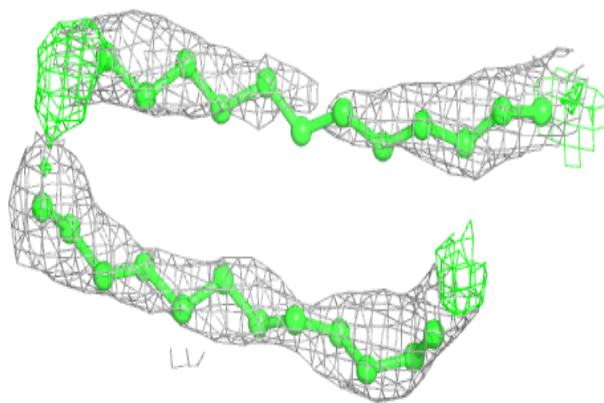
**Electron density around PLC C 405:**

$2mF_o-DF_c$  (at 0.7 rmsd) in gray  
 $mF_o-DF_c$  (at 3 rmsd) in purple (negative)  
and green (positive)

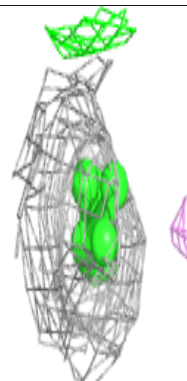
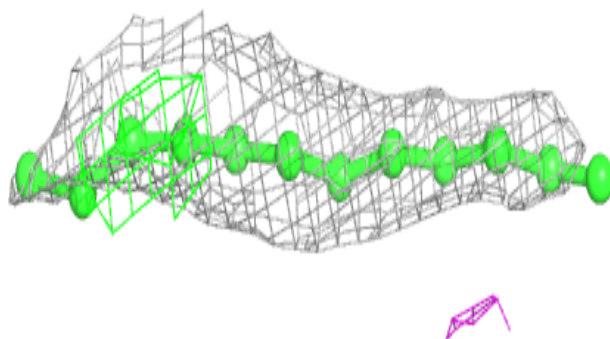
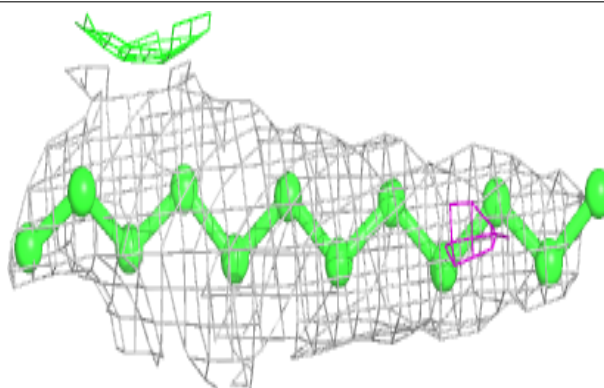


**Electron density around PLC E 407:**

$2mF_o-DF_c$  (at 0.7 rmsd) in gray  
 $mF_o-DF_c$  (at 3 rmsd) in purple (negative)  
and green (positive)

**Electron density around PLC B 508:**

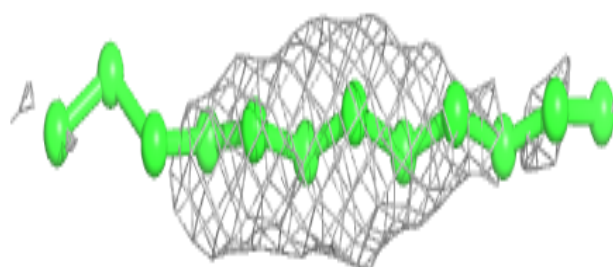
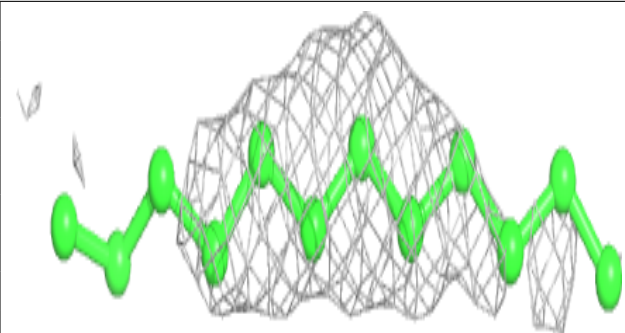
$2mF_o-DF_c$  (at 0.7 rmsd) in gray  
 $mF_o-DF_c$  (at 3 rmsd) in purple (negative)  
and green (positive)



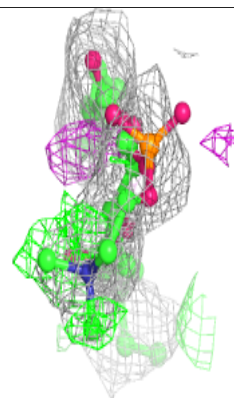
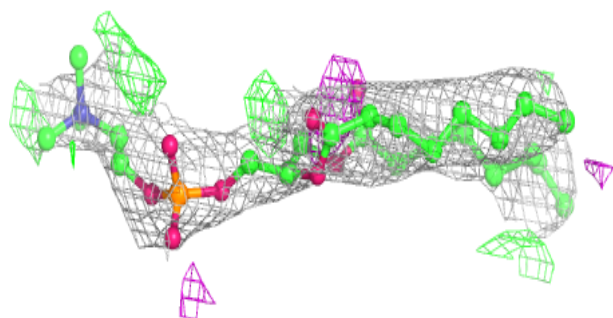
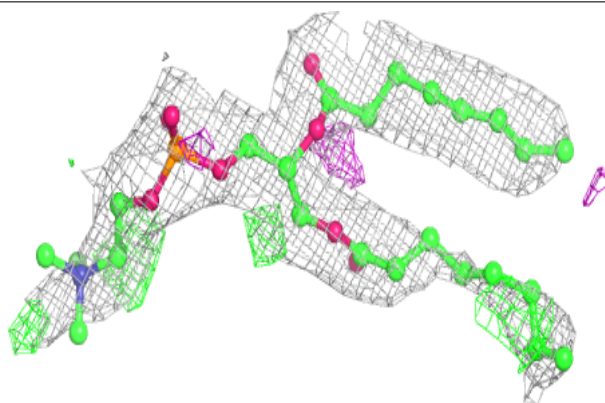


**Electron density around PLC C 406:**

$2mF_o-DF_c$  (at 0.7 rmsd) in gray  
 $mF_o-DF_c$  (at 3 rmsd) in purple (negative)  
and green (positive)

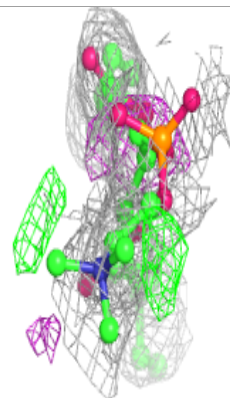
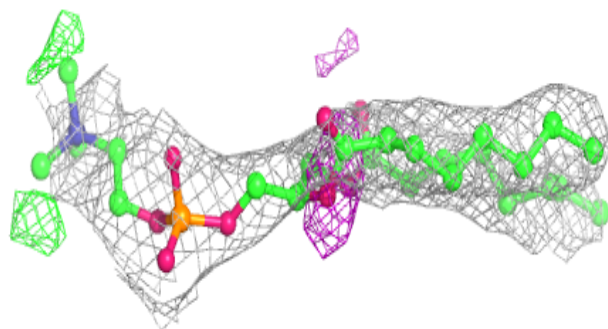
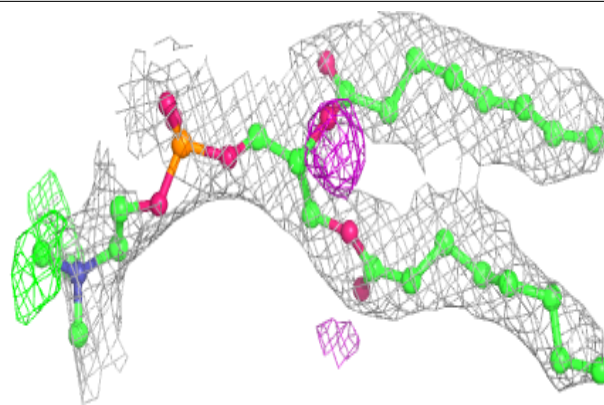
**Electron density around PLC D 406:**

$2mF_o-DF_c$  (at 0.7 rmsd) in gray  
 $mF_o-DF_c$  (at 3 rmsd) in purple (negative)  
and green (positive)

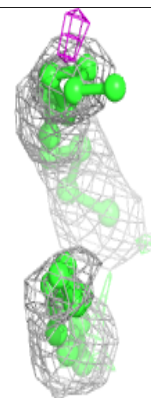
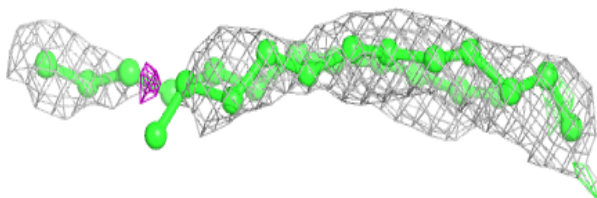
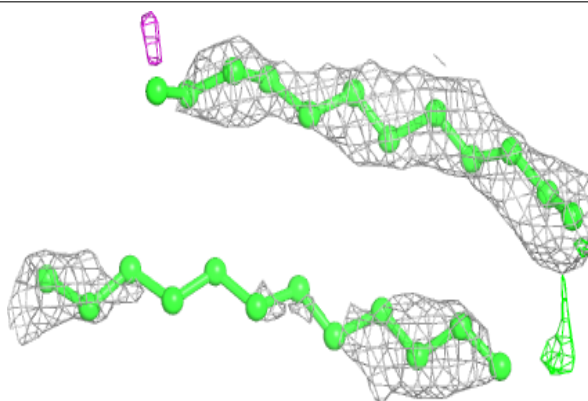


**Electron density around PLC C 404:**

$2mF_o-DF_c$  (at 0.7 rmsd) in gray  
 $mF_o-DF_c$  (at 3 rmsd) in purple (negative)  
and green (positive)

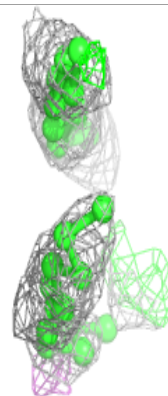
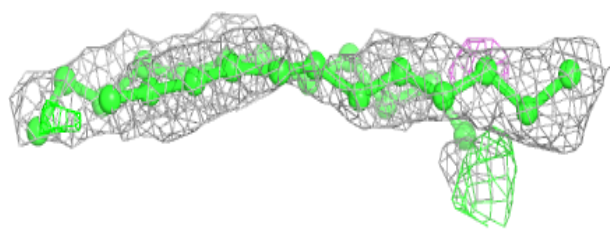
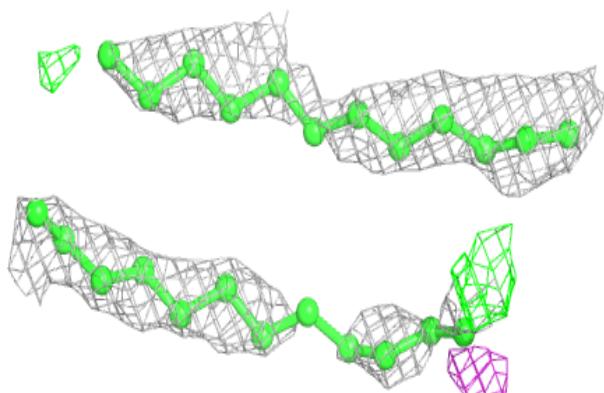
**Electron density around PLC B 507:**

$2mF_o-DF_c$  (at 0.7 rmsd) in gray  
 $mF_o-DF_c$  (at 3 rmsd) in purple (negative)  
and green (positive)

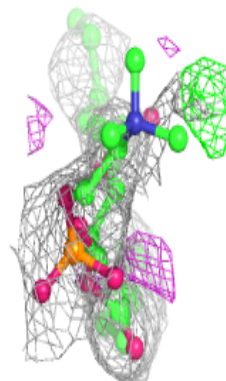
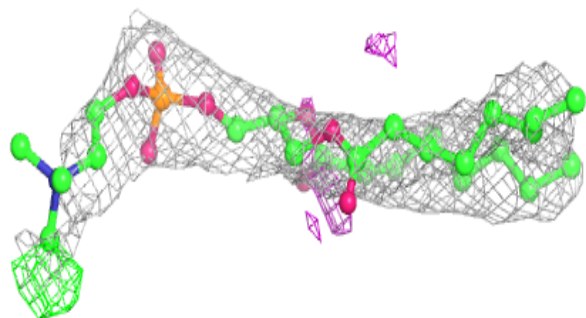
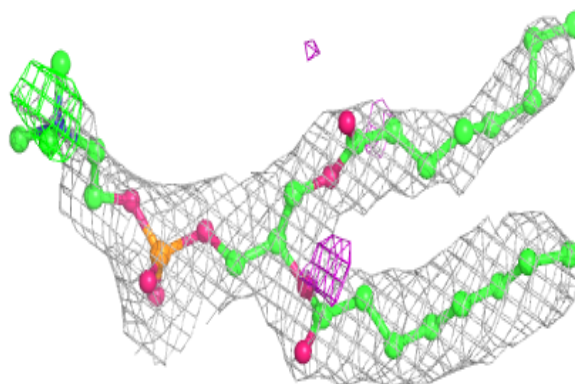


**Electron density around PLC D 407:**

$2mF_o-DF_c$  (at 0.7 rmsd) in gray  
 $mF_o-DF_c$  (at 3 rmsd) in purple (negative)  
and green (positive)

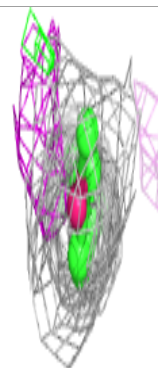
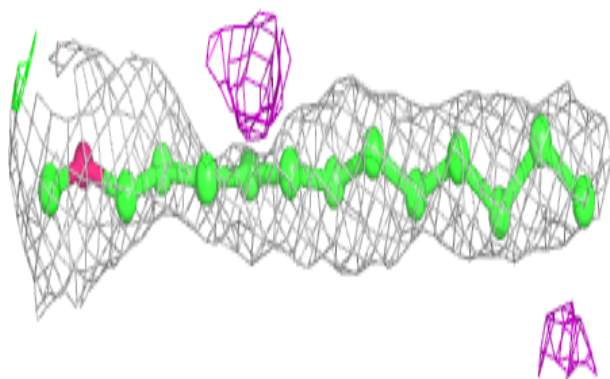
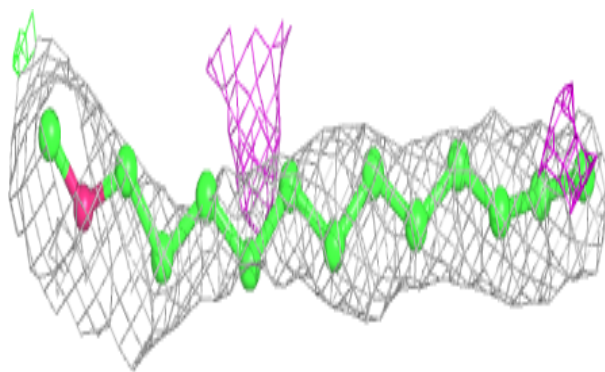
**Electron density around PLC A 506:**

$2mF_o-DF_c$  (at 0.7 rmsd) in gray  
 $mF_o-DF_c$  (at 3 rmsd) in purple (negative)  
and green (positive)

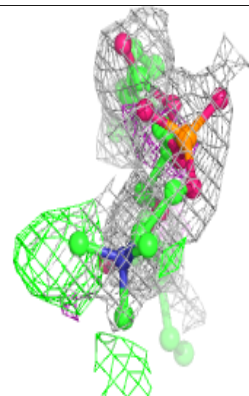
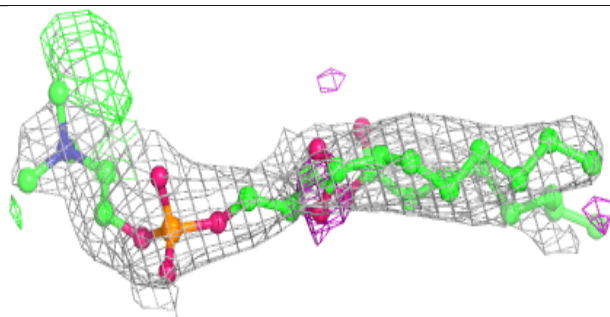
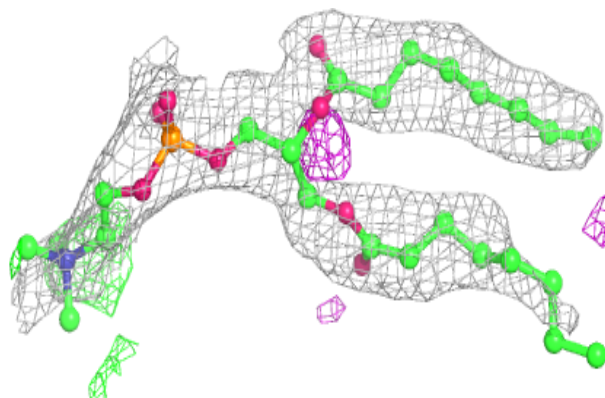


**Electron density around LMT B 501:**

$2mF_o-DF_c$  (at 0.7 rmsd) in gray  
 $mF_o-DF_c$  (at 3 rmsd) in purple (negative)  
and green (positive)

**Electron density around PLC E 406:**

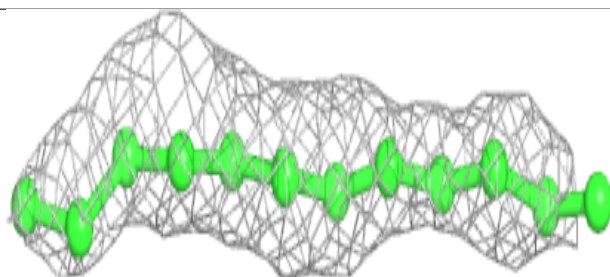
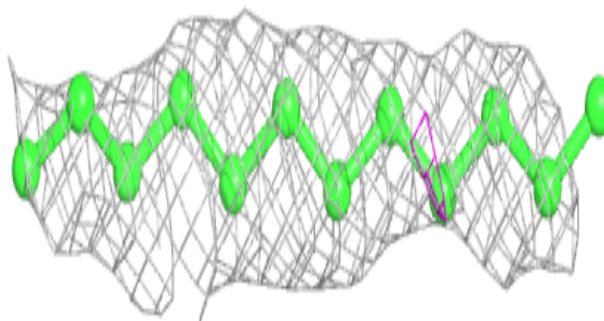
$2mF_o-DF_c$  (at 0.7 rmsd) in gray  
 $mF_o-DF_c$  (at 3 rmsd) in purple (negative)  
and green (positive)



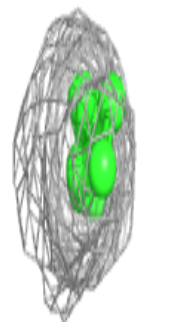


**Electron density around PLC A 508:**

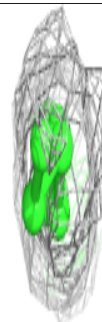
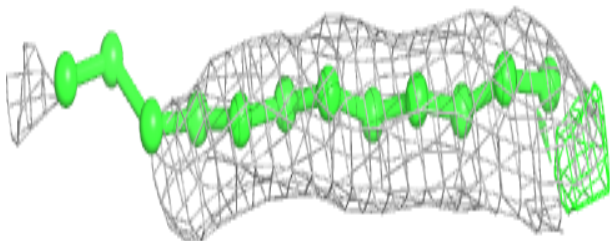
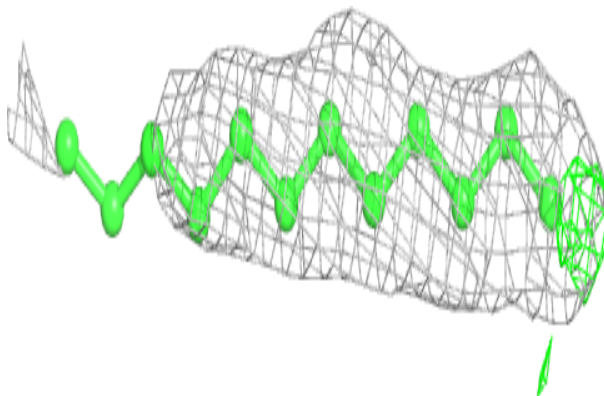
$2mF_o-DF_c$  (at 0.7 rmsd) in gray  
 $mF_o-DF_c$  (at 3 rmsd) in purple (negative)  
and green (positive)



D

**Electron density around PLC E 408:**

$2mF_o-DF_c$  (at 0.7 rmsd) in gray  
 $mF_o-DF_c$  (at 3 rmsd) in purple (negative)  
and green (positive)



## 6.5 Other polymers [i](#)

There are no such residues in this entry.