



# Full wwPDB X-ray Structure Validation Report ⓘ

Oct 1, 2023 – 11:39 PM EDT

PDB ID : 6MN5  
Title : Crystal structure of aminoglycoside acetyltransferase AAC(3)-IVa, H154A mutant, in complex with gentamicin C1A  
Authors : Stogios, P.J.; Evdokimova, E.; Kim, Y.; Di Leo, R.; Savchenko, A.; Joachimiak, A.; Satchell, K.J.; Center for Structural Genomics of Infectious Diseases (CS-GID)  
Deposited on : 2018-10-01  
Resolution : 2.58 Å(reported)

This is a Full wwPDB X-ray Structure Validation Report for a publicly released PDB entry.

We welcome your comments at [validation@mail.wwpdb.org](mailto:validation@mail.wwpdb.org)

A user guide is available at

<https://www.wwpdb.org/validation/2017/XrayValidationReportHelp>

with specific help available everywhere you see the ⓘ symbol.

The types of validation reports are described at

<http://www.wwpdb.org/validation/2017/FAQs#types>.

---

The following versions of software and data (see [references ⓘ](#)) were used in the production of this report:

MolProbity : **FAILED**  
Mogul : 1.8.5 (274361), CSD as541be (2020)  
Xtriage (Phenix) : 1.13  
EDS : **FAILED**  
buster-report : 1.1.7 (2018)  
Percentile statistics : 20191225.v01 (using entries in the PDB archive December 25th 2019)  
Ideal geometry (proteins) : Engh & Huber (2001)  
Ideal geometry (DNA, RNA) : Parkinson et al. (1996)  
Validation Pipeline (wwPDB-VP) : 2.35.1

## 1 Overall quality at a glance

The following experimental techniques were used to determine the structure:

*X-RAY DIFFRACTION*

The reported resolution of this entry is 2.58 Å.

There are no overall percentile quality scores available for this entry.

MolProbity and EDS failed to run properly - the sequence quality summary graphics cannot be shown.

## 2 Entry composition [i](#)

There are 8 unique types of molecules in this entry. The entry contains 12951 atoms, of which 0 are hydrogens and 0 are deuteriums.

In the tables below, the ZeroOcc column contains the number of atoms modelled with zero occupancy, the AltConf column contains the number of residues with at least one atom in alternate conformation and the Trace column contains the number of residues modelled with at most 2 atoms.

- Molecule 1 is a protein called Aminoglycoside N(3)-acetyltransferase, AAC(3)-IVa.

Mol	Chain	Residues	Atoms					ZeroOcc	AltConf	Trace
			Total	C	N	O	S			
1	A	259	Total 1981	C 1258	N 351	O 364	S 8	0	2	0
1	B	259	Total 1970	C 1251	N 350	O 361	S 8	0	0	0
1	C	259	Total 1970	C 1251	N 350	O 361	S 8	0	0	0
1	D	260	Total 1975	C 1253	N 351	O 363	S 8	0	0	0
1	E	259	Total 1964	C 1248	N 347	O 361	S 8	0	0	0
1	F	259	Total 1964	C 1248	N 347	O 361	S 8	0	0	0

There are 30 discrepancies between the modelled and reference sequences:

Chain	Residue	Modelled	Actual	Comment	Reference
A	-3	GLY	-	expression tag	UNP Q306W4
A	-2	GLN	-	expression tag	UNP Q306W4
A	-1	GLN	-	expression tag	UNP Q306W4
A	0	MET	-	expression tag	UNP Q306W4
A	154	ALA	HIS	engineered mutation	UNP Q306W4
B	-3	GLY	-	expression tag	UNP Q306W4
B	-2	GLN	-	expression tag	UNP Q306W4
B	-1	GLN	-	expression tag	UNP Q306W4
B	0	MET	-	expression tag	UNP Q306W4
B	154	ALA	HIS	engineered mutation	UNP Q306W4
C	-3	GLY	-	expression tag	UNP Q306W4
C	-2	GLN	-	expression tag	UNP Q306W4
C	-1	GLN	-	expression tag	UNP Q306W4
C	0	MET	-	expression tag	UNP Q306W4
C	154	ALA	HIS	engineered mutation	UNP Q306W4
D	-3	GLY	-	expression tag	UNP Q306W4
D	-2	GLN	-	expression tag	UNP Q306W4

*Continued on next page...*



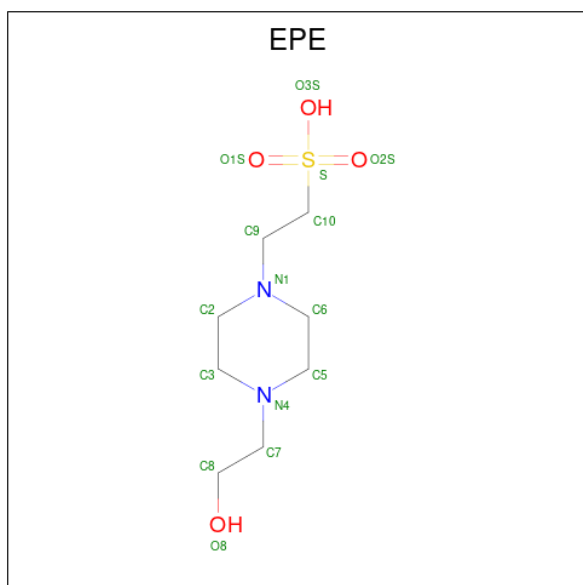
Continued from previous page...

Mol	Chain	Residues	Atoms				ZeroOcc	AltConf
2	D	1	Total	C	N	O	0	0
			31	19	5	7		
2	E	1	Total	C	N	O	0	0
			31	19	5	7		
2	F	1	Total	C	N	O	0	0
			31	19	5	7		

- Molecule 3 is ZINC ION (three-letter code: ZN) (formula: Zn).

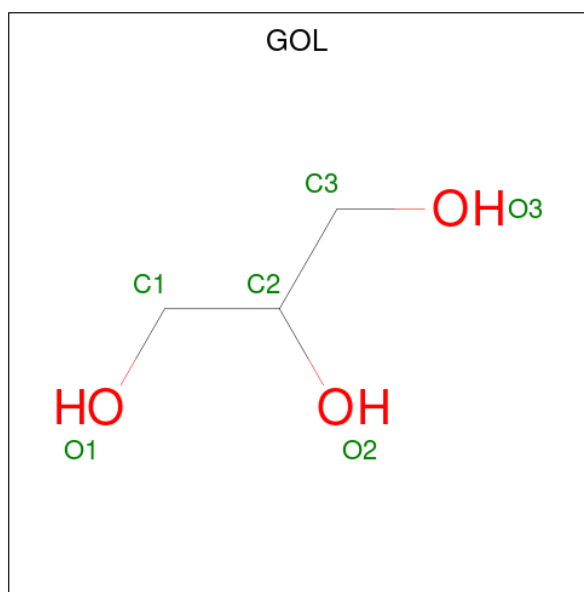
Mol	Chain	Residues	Atoms		ZeroOcc	AltConf
3	A	1	Total	Zn	0	0
			1	1		
3	B	1	Total	Zn	0	0
			1	1		
3	C	1	Total	Zn	0	0
			1	1		
3	D	1	Total	Zn	0	0
			1	1		
3	E	1	Total	Zn	0	0
			1	1		
3	F	1	Total	Zn	0	0
			1	1		

- Molecule 4 is 4-(2-HYDROXYETHYL)-1-PIPERAZINE ETHANESULFONIC ACID (three-letter code: EPE) (formula: C<sub>8</sub>H<sub>18</sub>N<sub>2</sub>O<sub>4</sub>S).



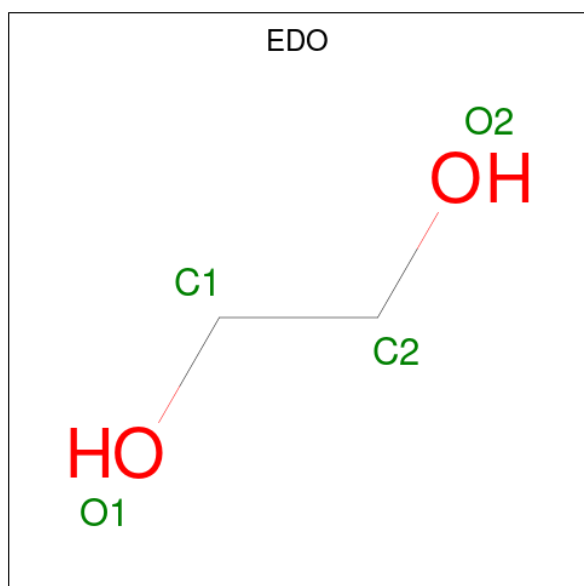
Mol	Chain	Residues	Atoms					ZeroOcc	AltConf
4	A	1	Total	C	N	O	S	0	0
			15	8	2	4	1		
4	A	1	Total	C	N	O	S	0	0
			15	8	2	4	1		
4	B	1	Total	C	N	O	S	0	0
			15	8	2	4	1		
4	B	1	Total	C	N	O	S	0	0
			15	8	2	4	1		
4	C	1	Total	C	N	O	S	0	0
			15	8	2	4	1		
4	C	1	Total	C	N	O	S	0	0
			15	8	2	4	1		
4	D	1	Total	C	N	O	S	0	0
			15	8	2	4	1		
4	D	1	Total	C	N	O	S	0	0
			15	8	2	4	1		
4	E	1	Total	C	N	O	S	0	0
			15	8	2	4	1		
4	E	1	Total	C	N	O	S	0	0
			15	8	2	4	1		
4	F	1	Total	C	N	O	S	0	0
			15	8	2	4	1		
4	F	1	Total	C	N	O	S	0	0
			15	8	2	4	1		

- Molecule 5 is GLYCEROL (three-letter code: GOL) (formula: C<sub>3</sub>H<sub>8</sub>O<sub>3</sub>).



Mol	Chain	Residues	Atoms			ZeroOcc	AltConf
5	A	1	Total	C	O	0	0
			6	3	3		
5	B	1	Total	C	O	0	0
			6	3	3		
5	C	1	Total	C	O	0	0
			6	3	3		
5	D	1	Total	C	O	0	0
			6	3	3		
5	D	1	Total	C	O	0	0
			6	3	3		

- Molecule 6 is 1,2-ETHANEDIOL (three-letter code: EDO) (formula: C<sub>2</sub>H<sub>6</sub>O<sub>2</sub>).



Mol	Chain	Residues	Atoms			ZeroOcc	AltConf
6	A	1	Total	C	O	0	0
			4	2	2		
6	A	1	Total	C	O	0	0
			4	2	2		
6	A	1	Total	C	O	0	0
			4	2	2		
6	A	1	Total	C	O	0	0
			4	2	2		
6	A	1	Total	C	O	0	0
			4	2	2		
6	A	1	Total	C	O	0	0
			4	2	2		

*Continued on next page...*

*Continued from previous page...*

Mol	Chain	Residues	Atoms			ZeroOcc	AltConf
6	A	1	Total 4	C 2	O 2	0	0
6	A	1	Total 4	C 2	O 2	0	0
6	A	1	Total 4	C 2	O 2	0	0
6	A	1	Total 4	C 2	O 2	0	0
6	B	1	Total 4	C 2	O 2	0	0
6	B	1	Total 4	C 2	O 2	0	0
6	B	1	Total 4	C 2	O 2	0	0
6	B	1	Total 4	C 2	O 2	0	0
6	B	1	Total 4	C 2	O 2	0	0
6	B	1	Total 4	C 2	O 2	0	0
6	B	1	Total 4	C 2	O 2	0	0
6	B	1	Total 4	C 2	O 2	0	0
6	B	1	Total 4	C 2	O 2	0	0
6	C	1	Total 4	C 2	O 2	0	0
6	C	1	Total 4	C 2	O 2	0	0
6	C	1	Total 4	C 2	O 2	0	0
6	C	1	Total 4	C 2	O 2	0	0
6	C	1	Total 4	C 2	O 2	0	0
6	C	1	Total 4	C 2	O 2	0	0
6	C	1	Total 4	C 2	O 2	0	0
6	C	1	Total 4	C 2	O 2	0	0
6	C	1	Total 4	C 2	O 2	0	0

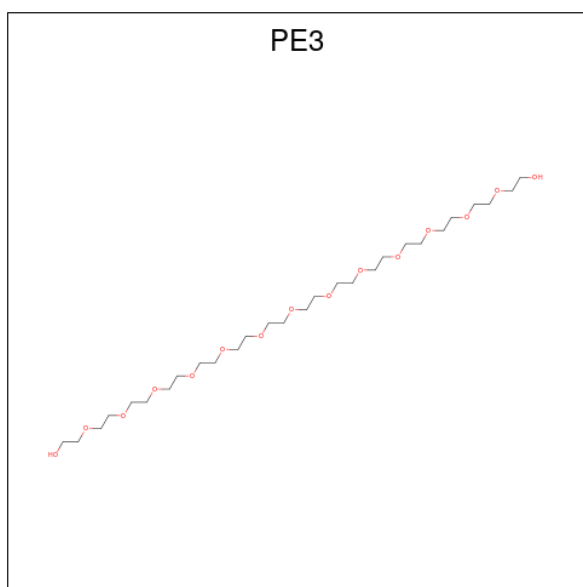
*Continued on next page...*



*Continued from previous page...*

Mol	Chain	Residues	Atoms	ZeroOcc	AltConf
6	D	1	Total C O 4 2 2	0	0
6	D	1	Total C O 4 2 2	0	0
6	D	1	Total C O 4 2 2	0	0
6	D	1	Total C O 4 2 2	0	0
6	D	1	Total C O 4 2 2	0	0
6	D	1	Total C O 4 2 2	0	0
6	D	1	Total C O 4 2 2	0	0
6	D	1	Total C O 4 2 2	0	0
6	D	1	Total C O 4 2 2	0	0
6	E	1	Total C O 4 2 2	0	0
6	E	1	Total C O 4 2 2	0	0
6	E	1	Total C O 4 2 2	0	0
6	E	1	Total C O 4 2 2	0	0
6	F	1	Total C O 4 2 2	0	0

- Molecule 7 is 3,6,9,12,15,18,21,24,27,30,33,36,39-TRIDECAXAHENTETRACONTANE-1,41-DIOL (three-letter code: PE3) (formula: C<sub>28</sub>H<sub>58</sub>O<sub>15</sub>).



Mol	Chain	Residues	Atoms		ZeroOcc	AltConf
7	B	1	Total	C O	0	0
			16	10 6		
7	C	1	Total	C O	0	0
			10	6 4		
7	D	1	Total	C O	0	0
			16	10 6		

- Molecule 8 is water.

Mol	Chain	Residues	Atoms		ZeroOcc	AltConf
8	A	161	Total	O	0	3
			164	164		
8	B	120	Total	O	0	4
			124	124		
8	C	97	Total	O	0	1
			98	98		
8	D	76	Total	O	0	1
			77	77		
8	E	25	Total	O	0	0
			25	25		
8	F	30	Total	O	0	1
			31	31		

MolProbity and EDS failed to run properly - this section is therefore empty.

### 3 Data and refinement statistics

EDS failed to run properly - this section is therefore incomplete.

Property	Value	Source
Space group	P 21 21 21	Depositor
Cell constants a, b, c, $\alpha$ , $\beta$ , $\gamma$	77.61Å 131.88Å 266.87Å 90.00° 90.00° 90.00°	Depositor
Resolution (Å)	38.40 – 2.58	Depositor
% Data completeness (in resolution range)	95.6 (38.40-2.58)	Depositor
$R_{merge}$	0.09	Depositor
$R_{sym}$	(Not available)	Depositor
$\langle I/\sigma(I) \rangle$ <sup>1</sup>	1.25 (at 2.58Å)	Xtrriage
Refinement program	PHENIX (dev_3026: ???)	Depositor
R, $R_{free}$	0.187 , 0.221	Depositor
Wilson B-factor (Å <sup>2</sup> )	57.2	Xtrriage
Anisotropy	0.496	Xtrriage
L-test for twinning <sup>2</sup>	$\langle  L  \rangle = 0.49$ , $\langle L^2 \rangle = 0.32$	Xtrriage
Estimated twinning fraction	No twinning to report.	Xtrriage
Total number of atoms	12951	wwPDB-VP
Average B, all atoms (Å <sup>2</sup> )	91.0	wwPDB-VP

Xtrriage's analysis on translational NCS is as follows: *The largest off-origin peak in the Patterson function is 2.98% of the height of the origin peak. No significant pseudotranslation is detected.*

<sup>1</sup>Intensities estimated from amplitudes.

<sup>2</sup>Theoretical values of  $\langle |L| \rangle$ ,  $\langle L^2 \rangle$  for acentric reflections are 0.5, 0.333 respectively for untwinned datasets, and 0.375, 0.2 for perfectly twinned datasets.

## 4 Model quality [i](#)

### 4.1 Standard geometry [i](#)

MolProbity failed to run properly - this section is therefore empty.

### 4.2 Too-close contacts [i](#)

MolProbity failed to run properly - this section is therefore empty.

### 4.3 Torsion angles [i](#)

#### 4.3.1 Protein backbone [i](#)

MolProbity failed to run properly - this section is therefore empty.

#### 4.3.2 Protein sidechains [i](#)

MolProbity failed to run properly - this section is therefore empty.

#### 4.3.3 RNA [i](#)

MolProbity failed to run properly - this section is therefore empty.

### 4.4 Non-standard residues in protein, DNA, RNA chains [i](#)

There are no non-standard protein/DNA/RNA residues in this entry.

### 4.5 Carbohydrates [i](#)

There are no monosaccharides in this entry.

### 4.6 Ligand geometry [i](#)

Of 73 ligands modelled in this entry, 6 are monoatomic - leaving 67 for Mogul analysis.

In the following table, the Counts columns list the number of bonds (or angles) for which Mogul statistics could be retrieved, the number of bonds (or angles) that are observed in the model and the number of bonds (or angles) that are defined in the Chemical Component Dictionary. The Link column lists molecule types, if any, to which the group is linked. The Z score for a bond

length (or angle) is the number of standard deviations the observed value is removed from the expected value. A bond length (or angle) with  $|Z| > 2$  is considered an outlier worth inspection. RMSZ is the root-mean-square of all Z scores of the bond lengths (or angles).

Mol	Type	Chain	Res	Link	Bond lengths			Bond angles		
					Counts	RMSZ	# Z  > 2	Counts	RMSZ	# Z  > 2
5	GOL	C	305	-	5,5,5	0.90	0	5,5,5	0.99	0
6	EDO	A	311	-	3,3,3	0.45	0	2,2,2	0.39	0
6	EDO	D	308	-	3,3,3	0.48	0	2,2,2	0.32	0
6	EDO	D	309	-	3,3,3	0.48	0	2,2,2	0.31	0
6	EDO	B	310	-	3,3,3	0.47	0	2,2,2	0.30	0
6	EDO	E	307	-	3,3,3	0.46	0	2,2,2	0.33	0
2	LLL	F	301	-	29,33,33	0.43	0	34,49,49	1.28	4 (11%)
6	EDO	B	313	-	3,3,3	0.45	0	2,2,2	0.36	0
6	EDO	B	312	-	3,3,3	0.46	0	2,2,2	0.31	0
4	EPE	D	303	-	15,15,15	2.04	1 (6%)	18,20,20	1.10	3 (16%)
2	LLL	A	301	-	29,33,33	0.48	0	34,49,49	1.27	4 (11%)
6	EDO	A	313	-	3,3,3	0.46	0	2,2,2	0.36	0
5	GOL	D	305	-	5,5,5	0.91	0	5,5,5	1.01	0
6	EDO	A	315	-	3,3,3	0.47	0	2,2,2	0.27	0
2	LLL	B	301	-	29,33,33	0.48	0	34,49,49	1.27	4 (11%)
6	EDO	C	311	-	3,3,3	0.45	0	2,2,2	0.36	0
6	EDO	C	314	-	3,3,3	0.41	0	2,2,2	0.44	0
6	EDO	D	313	-	3,3,3	0.47	0	2,2,2	0.33	0
6	EDO	A	307	-	3,3,3	0.47	0	2,2,2	0.28	0
5	GOL	A	305	-	5,5,5	0.90	0	5,5,5	0.99	0
7	PE3	C	315	-	9,9,42	0.35	0	8,8,41	1.01	0
5	GOL	B	305	-	5,5,5	0.97	0	5,5,5	1.01	0
6	EDO	A	310	-	3,3,3	0.49	0	2,2,2	0.31	0
6	EDO	D	307	-	3,3,3	0.48	0	2,2,2	0.27	0
6	EDO	A	306	-	3,3,3	0.46	0	2,2,2	0.31	0
6	EDO	A	314	-	3,3,3	0.45	0	2,2,2	0.39	0
4	EPE	B	303	-	15,15,15	2.04	1 (6%)	18,20,20	1.10	3 (16%)
6	EDO	A	308	-	3,3,3	0.49	0	2,2,2	0.20	0
2	LLL	E	301	-	29,33,33	0.47	0	34,49,49	1.26	4 (11%)
6	EDO	E	305	-	3,3,3	0.46	0	2,2,2	0.32	0
4	EPE	E	304	-	15,15,15	2.03	1 (6%)	18,20,20	1.09	3 (16%)
6	EDO	C	313	-	3,3,3	0.46	0	2,2,2	0.33	0
6	EDO	D	312	-	3,3,3	0.46	0	2,2,2	0.35	0
4	EPE	C	304	-	15,15,15	2.03	1 (6%)	18,20,20	1.12	3 (16%)
6	EDO	A	316	-	3,3,3	0.44	0	2,2,2	0.36	0
6	EDO	D	314	-	3,3,3	0.43	0	2,2,2	0.11	0
7	PE3	B	314	-	15,15,42	0.40	0	14,14,41	0.82	0

Mol	Type	Chain	Res	Link	Bond lengths			Bond angles		
					Counts	RMSZ	# Z  > 2	Counts	RMSZ	# Z  > 2
4	EPE	E	303	-	15,15,15	2.02	1 (6%)	18,20,20	1.10	3 (16%)
6	EDO	A	312	-	3,3,3	0.31	0	2,2,2	0.51	0
6	EDO	C	309	-	3,3,3	0.47	0	2,2,2	0.32	0
6	EDO	E	306	-	3,3,3	0.48	0	2,2,2	0.31	0
5	GOL	D	306	-	5,5,5	0.89	0	5,5,5	0.99	0
2	LLL	C	301	-	29,33,33	0.47	0	34,49,49	1.26	4 (11%)
4	EPE	B	304	-	15,15,15	2.03	1 (6%)	18,20,20	1.10	3 (16%)
6	EDO	B	311	-	3,3,3	0.47	0	2,2,2	0.31	0
7	PE3	D	315	-	15,15,42	0.53	0	14,14,41	0.90	0
4	EPE	F	304	-	15,15,15	2.03	1 (6%)	18,20,20	1.10	3 (16%)
4	EPE	C	303	-	15,15,15	2.03	1 (6%)	18,20,20	1.09	3 (16%)
6	EDO	D	311	-	3,3,3	0.46	0	2,2,2	0.37	0
4	EPE	D	304	-	15,15,15	2.04	1 (6%)	18,20,20	1.10	3 (16%)
4	EPE	F	303	-	15,15,15	2.04	1 (6%)	18,20,20	1.10	3 (16%)
6	EDO	B	309	-	3,3,3	0.46	0	2,2,2	0.29	0
6	EDO	C	306	-	3,3,3	0.46	0	2,2,2	0.32	0
4	EPE	A	304	-	15,15,15	2.04	1 (6%)	18,20,20	1.10	3 (16%)
6	EDO	E	308	-	3,3,3	0.44	0	2,2,2	0.43	0
4	EPE	A	303	-	15,15,15	2.04	1 (6%)	18,20,20	1.10	3 (16%)
2	LLL	D	301	-	29,33,33	0.48	0	34,49,49	1.26	4 (11%)
6	EDO	C	310	-	3,3,3	0.36	0	2,2,2	0.21	0
6	EDO	C	307	-	3,3,3	0.44	0	2,2,2	0.49	0
6	EDO	C	308	-	3,3,3	0.45	0	2,2,2	0.37	0
6	EDO	F	305	-	3,3,3	0.48	0	2,2,2	0.30	0
6	EDO	B	308	-	3,3,3	0.47	0	2,2,2	0.32	0
6	EDO	B	306	-	3,3,3	0.46	0	2,2,2	0.33	0
6	EDO	A	309	-	3,3,3	0.46	0	2,2,2	0.31	0
6	EDO	C	312	-	3,3,3	0.45	0	2,2,2	0.38	0
6	EDO	B	307	-	3,3,3	0.46	0	2,2,2	0.33	0
6	EDO	D	310	-	3,3,3	0.47	0	2,2,2	0.34	0

In the following table, the Chirals column lists the number of chiral outliers, the number of chiral centers analysed, the number of these observed in the model and the number defined in the Chemical Component Dictionary. Similar counts are reported in the Torsion and Rings columns. '-' means no outliers of that kind were identified.

Mol	Type	Chain	Res	Link	Chirals	Torsions	Rings
5	GOL	C	305	-	-	2/4/4/4	-
6	EDO	A	311	-	-	0/1/1/1	-
6	EDO	D	308	-	-	1/1/1/1	-

Continued on next page...

*Continued from previous page...*

Mol	Type	Chain	Res	Link	Chirals	Torsions	Rings
6	EDO	D	309	-	-	0/1/1/1	-
6	EDO	B	310	-	-	0/1/1/1	-
6	EDO	E	307	-	-	0/1/1/1	-
2	LLL	F	301	-	-	2/11/65/65	0/3/3/3
6	EDO	B	313	-	-	0/1/1/1	-
6	EDO	B	312	-	-	0/1/1/1	-
4	EPE	D	303	-	-	5/9/19/19	0/1/1/1
2	LLL	A	301	-	-	3/11/65/65	0/3/3/3
6	EDO	A	313	-	-	0/1/1/1	-
5	GOL	D	305	-	-	0/4/4/4	-
6	EDO	A	315	-	-	0/1/1/1	-
2	LLL	B	301	-	-	3/11/65/65	0/3/3/3
6	EDO	C	311	-	-	0/1/1/1	-
6	EDO	C	314	-	-	0/1/1/1	-
6	EDO	D	313	-	-	1/1/1/1	-
6	EDO	A	307	-	-	0/1/1/1	-
5	GOL	A	305	-	-	0/4/4/4	-
7	PE3	C	315	-	-	1/7/7/40	-
5	GOL	B	305	-	-	0/4/4/4	-
6	EDO	A	310	-	-	0/1/1/1	-
6	EDO	D	307	-	-	0/1/1/1	-
6	EDO	A	306	-	-	0/1/1/1	-
6	EDO	A	314	-	-	0/1/1/1	-
4	EPE	B	303	-	-	4/9/19/19	0/1/1/1
6	EDO	A	308	-	-	0/1/1/1	-
2	LLL	E	301	-	-	3/11/65/65	0/3/3/3
6	EDO	E	305	-	-	0/1/1/1	-
4	EPE	E	304	-	-	4/9/19/19	0/1/1/1
6	EDO	C	313	-	-	0/1/1/1	-
6	EDO	D	312	-	-	0/1/1/1	-
4	EPE	C	304	-	-	4/9/19/19	0/1/1/1
6	EDO	A	316	-	-	0/1/1/1	-
6	EDO	D	314	-	-	0/1/1/1	-
7	PE3	B	314	-	-	8/13/13/40	-
4	EPE	E	303	-	-	7/9/19/19	0/1/1/1
6	EDO	A	312	-	-	1/1/1/1	-
6	EDO	C	309	-	-	1/1/1/1	-
6	EDO	E	306	-	-	0/1/1/1	-
5	GOL	D	306	-	-	0/4/4/4	-
2	LLL	C	301	-	-	3/11/65/65	0/3/3/3

*Continued on next page...*

Continued from previous page...

Mol	Type	Chain	Res	Link	Chirals	Torsions	Rings
4	EPE	B	304	-	-	3/9/19/19	0/1/1/1
6	EDO	B	311	-	-	0/1/1/1	-
7	PE3	D	315	-	-	5/13/13/40	-
4	EPE	F	304	-	-	3/9/19/19	0/1/1/1
4	EPE	C	303	-	-	5/9/19/19	0/1/1/1
6	EDO	D	311	-	-	0/1/1/1	-
4	EPE	D	304	-	-	4/9/19/19	0/1/1/1
4	EPE	F	303	-	-	3/9/19/19	0/1/1/1
6	EDO	B	309	-	-	0/1/1/1	-
6	EDO	C	306	-	-	0/1/1/1	-
4	EPE	A	304	-	-	4/9/19/19	0/1/1/1
6	EDO	E	308	-	-	0/1/1/1	-
4	EPE	A	303	-	-	7/9/19/19	0/1/1/1
2	LLL	D	301	-	-	4/11/65/65	0/3/3/3
6	EDO	C	310	-	-	1/1/1/1	-
6	EDO	C	307	-	-	0/1/1/1	-
6	EDO	C	308	-	-	0/1/1/1	-
6	EDO	F	305	-	-	0/1/1/1	-
6	EDO	B	308	-	-	0/1/1/1	-
6	EDO	B	306	-	-	0/1/1/1	-
6	EDO	A	309	-	-	0/1/1/1	-
6	EDO	C	312	-	-	0/1/1/1	-
6	EDO	B	307	-	-	0/1/1/1	-
6	EDO	D	310	-	-	0/1/1/1	-

All (12) bond length outliers are listed below:

Mol	Chain	Res	Type	Atoms	Z	Observed(Å)	Ideal(Å)
4	B	303	EPE	C10-S	-7.70	1.66	1.77
4	D	304	EPE	C10-S	-7.69	1.66	1.77
4	D	303	EPE	C10-S	-7.69	1.66	1.77
4	A	303	EPE	C10-S	-7.69	1.66	1.77
4	A	304	EPE	C10-S	-7.67	1.66	1.77
4	F	303	EPE	C10-S	-7.67	1.66	1.77
4	C	303	EPE	C10-S	-7.66	1.66	1.77
4	F	304	EPE	C10-S	-7.66	1.66	1.77
4	E	304	EPE	C10-S	-7.65	1.66	1.77
4	B	304	EPE	C10-S	-7.65	1.66	1.77
4	C	304	EPE	C10-S	-7.64	1.66	1.77
4	E	303	EPE	C10-S	-7.62	1.66	1.77



All (60) bond angle outliers are listed below:

Mol	Chain	Res	Type	Atoms	Z	Observed(°)	Ideal(°)
2	B	301	LLL	C11-O11-C42	-3.43	109.48	117.96
2	F	301	LLL	C11-O11-C42	-3.43	109.48	117.96
2	C	301	LLL	C11-O11-C42	-3.42	109.50	117.96
2	D	301	LLL	C13-O62-C62	-3.42	109.50	117.96
2	B	301	LLL	C13-O62-C62	-3.42	109.51	117.96
2	A	301	LLL	C13-O62-C62	-3.41	109.52	117.96
2	A	301	LLL	C11-O11-C42	-3.41	109.53	117.96
2	E	301	LLL	C11-O11-C42	-3.41	109.53	117.96
2	C	301	LLL	C13-O62-C62	-3.41	109.53	117.96
2	C	301	LLL	C93-N33-C33	-3.40	109.43	114.38
2	E	301	LLL	C13-O62-C62	-3.40	109.55	117.96
2	F	301	LLL	C13-O62-C62	-3.39	109.58	117.96
2	D	301	LLL	C11-O11-C42	-3.39	109.58	117.96
2	A	301	LLL	C93-N33-C33	-3.38	109.46	114.38
2	F	301	LLL	C93-N33-C33	-3.36	109.49	114.38
2	D	301	LLL	C93-N33-C33	-3.36	109.50	114.38
2	B	301	LLL	C93-N33-C33	-3.35	109.50	114.38
2	E	301	LLL	C93-N33-C33	-3.34	109.52	114.38
2	E	301	LLL	C11-O51-C51	-3.33	109.44	113.13
2	B	301	LLL	C11-O51-C51	-3.32	109.46	113.13
2	D	301	LLL	C11-O51-C51	-3.31	109.46	113.13
2	F	301	LLL	C11-O51-C51	-3.29	109.49	113.13
2	A	301	LLL	C11-O51-C51	-3.28	109.50	113.13
2	C	301	LLL	C11-O51-C51	-3.27	109.51	113.13
4	B	304	EPE	O3S-S-C10	2.31	109.51	105.77
4	F	303	EPE	O3S-S-C10	2.31	109.50	105.77
4	A	303	EPE	O3S-S-C10	2.30	109.49	105.77
4	A	304	EPE	O3S-S-C10	2.30	109.49	105.77
4	E	303	EPE	O3S-S-C10	2.29	109.48	105.77
4	D	303	EPE	O3S-S-C10	2.29	109.47	105.77
4	B	303	EPE	O3S-S-C10	2.29	109.47	105.77
4	D	304	EPE	O3S-S-C10	2.28	109.46	105.77
4	C	303	EPE	O3S-S-C10	2.28	109.46	105.77
4	C	304	EPE	O3S-S-C10	2.27	109.45	105.77
4	E	304	EPE	O3S-S-C10	2.27	109.44	105.77
4	F	304	EPE	O3S-S-C10	2.26	109.42	105.77
4	E	303	EPE	O2S-S-C10	2.15	109.51	106.92
4	A	303	EPE	O1S-S-C10	2.14	109.50	106.92
4	D	304	EPE	O2S-S-C10	2.14	109.49	106.92
4	F	304	EPE	O1S-S-C10	2.14	109.49	106.92
4	B	303	EPE	O1S-S-C10	2.13	109.48	106.92
4	F	304	EPE	O2S-S-C10	2.13	109.48	106.92

*Continued on next page...*

*Continued from previous page...*

Mol	Chain	Res	Type	Atoms	Z	Observed(°)	Ideal(°)
4	B	304	EPE	O1S-S-C10	2.13	109.48	106.92
4	A	304	EPE	O2S-S-C10	2.13	109.48	106.92
4	D	304	EPE	O1S-S-C10	2.13	109.48	106.92
4	F	303	EPE	O1S-S-C10	2.13	109.48	106.92
4	A	304	EPE	O1S-S-C10	2.13	109.47	106.92
4	B	303	EPE	O2S-S-C10	2.12	109.47	106.92
4	A	303	EPE	O2S-S-C10	2.12	109.47	106.92
4	C	303	EPE	O2S-S-C10	2.11	109.46	106.92
4	B	304	EPE	O2S-S-C10	2.11	109.46	106.92
4	D	303	EPE	O2S-S-C10	2.11	109.46	106.92
4	C	304	EPE	O1S-S-C10	2.11	109.46	106.92
4	E	303	EPE	O1S-S-C10	2.11	109.46	106.92
4	C	304	EPE	O2S-S-C10	2.11	109.45	106.92
4	E	304	EPE	O2S-S-C10	2.11	109.45	106.92
4	D	303	EPE	O1S-S-C10	2.11	109.45	106.92
4	C	303	EPE	O1S-S-C10	2.10	109.44	106.92
4	E	304	EPE	O1S-S-C10	2.10	109.44	106.92
4	F	303	EPE	O2S-S-C10	2.09	109.44	106.92

There are no chirality outliers.

All (92) torsion outliers are listed below:

Mol	Chain	Res	Type	Atoms
2	A	301	LLL	C23-C33-N33-C93
2	B	301	LLL	C21-C11-O11-C42
2	B	301	LLL	C23-C33-N33-C93
2	C	301	LLL	O51-C51-C61-N61
2	C	301	LLL	C23-C33-N33-C93
2	D	301	LLL	O51-C51-C61-N61
2	D	301	LLL	C23-C33-N33-C93
2	E	301	LLL	C23-C33-N33-C93
4	A	303	EPE	C10-C9-N1-C6
4	A	303	EPE	S-C10-C9-N1
4	A	303	EPE	C9-C10-S-O2S
4	A	303	EPE	C9-C10-S-O3S
4	B	303	EPE	C9-C10-S-O1S
4	B	303	EPE	C9-C10-S-O2S
4	B	303	EPE	C9-C10-S-O3S
4	B	304	EPE	N4-C7-C8-O8
4	C	303	EPE	C9-C10-S-O1S
4	C	303	EPE	C9-C10-S-O2S
4	D	303	EPE	C10-C9-N1-C2

*Continued on next page...*

*Continued from previous page...*

Mol	Chain	Res	Type	Atoms
4	D	303	EPE	C10-C9-N1-C6
4	D	304	EPE	C9-C10-S-O1S
4	D	304	EPE	C9-C10-S-O3S
4	E	303	EPE	C9-C10-S-O1S
4	E	304	EPE	C8-C7-N4-C3
4	F	303	EPE	C10-C9-N1-C2
4	F	303	EPE	C10-C9-N1-C6
4	F	303	EPE	C8-C7-N4-C3
4	B	303	EPE	N4-C7-C8-O8
4	E	304	EPE	N4-C7-C8-O8
4	D	304	EPE	N4-C7-C8-O8
4	C	304	EPE	N4-C7-C8-O8
4	D	303	EPE	N4-C7-C8-O8
4	E	303	EPE	C9-C10-S-O3S
7	B	314	PE3	O25-C26-C27-O28
7	B	314	PE3	O34-C35-C36-O37
5	C	305	GOL	C1-C2-C3-O3
7	B	314	PE3	C35-C36-O37-C38
6	D	313	EDO	O1-C1-C2-O2
4	A	303	EPE	N4-C7-C8-O8
4	C	303	EPE	C9-C10-S-O3S
7	D	315	PE3	C32-C33-O34-C35
6	C	309	EDO	O1-C1-C2-O2
4	A	303	EPE	C10-C9-N1-C2
4	A	304	EPE	C10-C9-N1-C2
4	A	304	EPE	C10-C9-N1-C6
4	C	303	EPE	C10-C9-N1-C2
4	C	304	EPE	C10-C9-N1-C6
4	E	303	EPE	C10-C9-N1-C2
4	E	303	EPE	C10-C9-N1-C6
4	E	304	EPE	C10-C9-N1-C2
4	E	304	EPE	C10-C9-N1-C6
4	F	304	EPE	C10-C9-N1-C6
7	D	315	PE3	C30-C29-O28-C27
6	C	310	EDO	O1-C1-C2-O2
4	E	303	EPE	C8-C7-N4-C3
4	E	303	EPE	C8-C7-N4-C5
7	B	314	PE3	C36-C35-O34-C33
4	F	304	EPE	N4-C7-C8-O8
4	A	303	EPE	C9-C10-S-O1S
4	D	304	EPE	C9-C10-S-O2S
4	E	303	EPE	C9-C10-S-O2S

*Continued on next page...*

*Continued from previous page...*

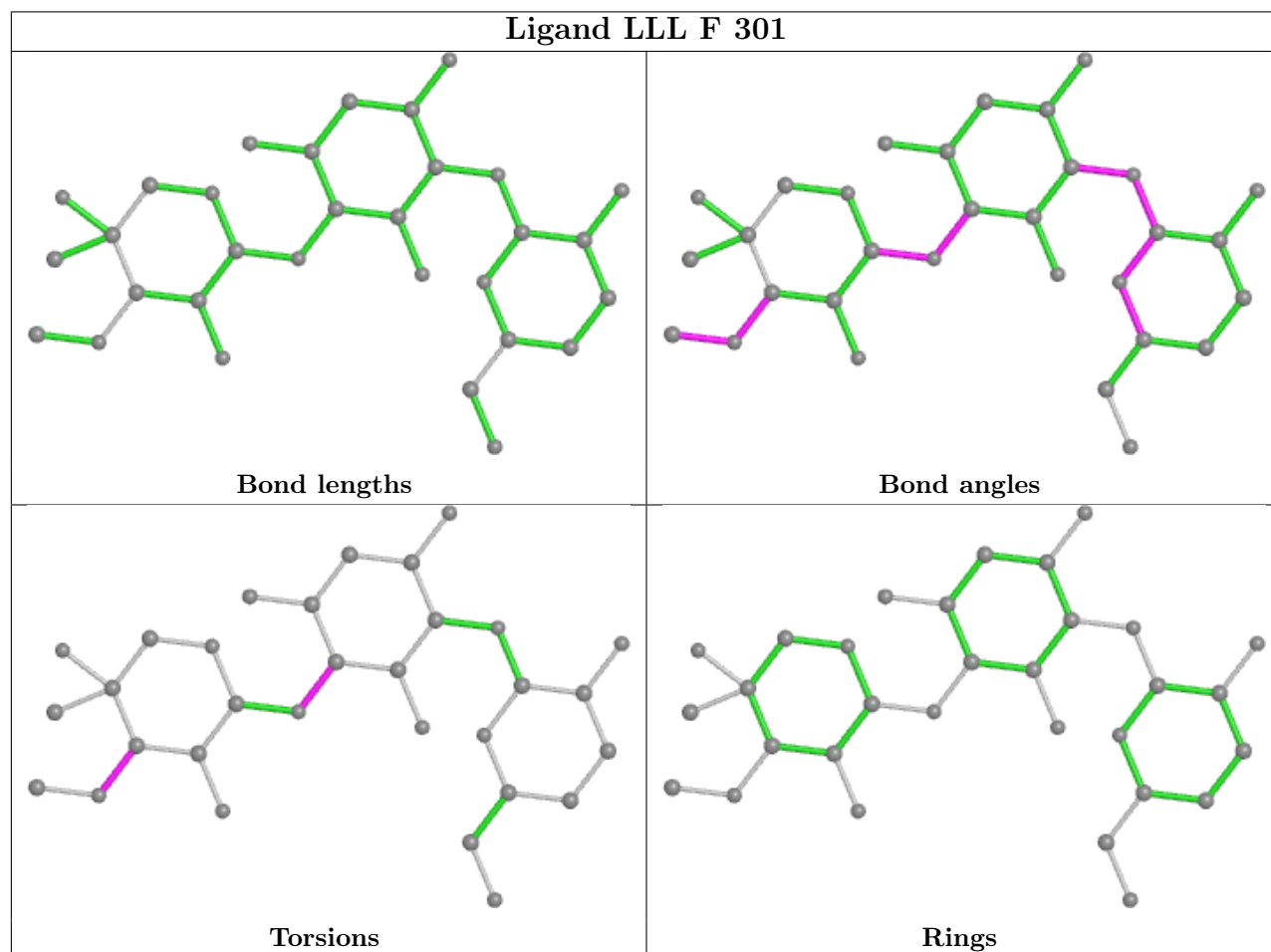
Mol	Chain	Res	Type	Atoms
7	B	314	PE3	O37-C38-C39-O40
2	D	301	LLL	C52-C42-O11-C11
4	A	304	EPE	N4-C7-C8-O8
2	E	301	LLL	C52-C42-O11-C11
2	A	301	LLL	C52-C62-O62-C13
2	E	301	LLL	C52-C62-O62-C13
6	D	308	EDO	O1-C1-C2-O2
2	D	301	LLL	C52-C62-O62-C13
2	B	301	LLL	C52-C62-O62-C13
7	B	314	PE3	C33-C32-O31-C30
4	B	304	EPE	C10-C9-N1-C2
4	C	303	EPE	C10-C9-N1-C6
4	C	304	EPE	C10-C9-N1-C2
4	F	304	EPE	C10-C9-N1-C2
7	B	314	PE3	O28-C29-C30-O31
4	D	303	EPE	C8-C7-N4-C3
2	F	301	LLL	C52-C62-O62-C13
2	C	301	LLL	C52-C62-O62-C13
7	C	315	PE3	O37-C38-C39-O40
7	D	315	PE3	O31-C32-C33-O34
4	D	303	EPE	C8-C7-N4-C5
2	F	301	LLL	C23-C33-N33-C93
5	C	305	GOL	O2-C2-C3-O3
7	D	315	PE3	O34-C35-C36-O37
7	B	314	PE3	C26-C27-O28-C29
7	D	315	PE3	O28-C29-C30-O31
2	A	301	LLL	C52-C42-O11-C11
4	C	304	EPE	S-C10-C9-N1
6	A	312	EDO	O1-C1-C2-O2
4	A	304	EPE	C9-C10-S-O2S
4	B	304	EPE	C10-C9-N1-C6

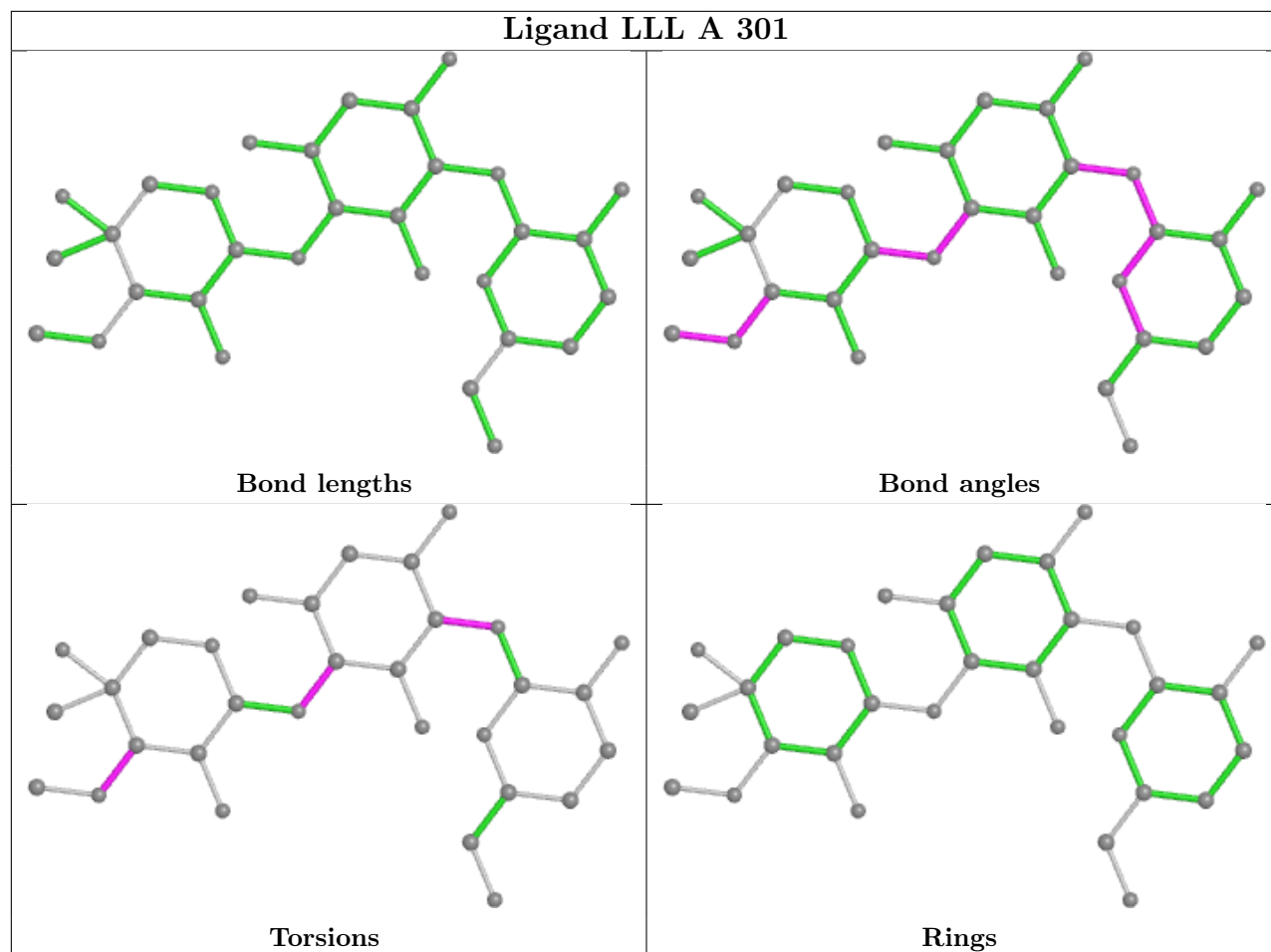
There are no ring outliers.

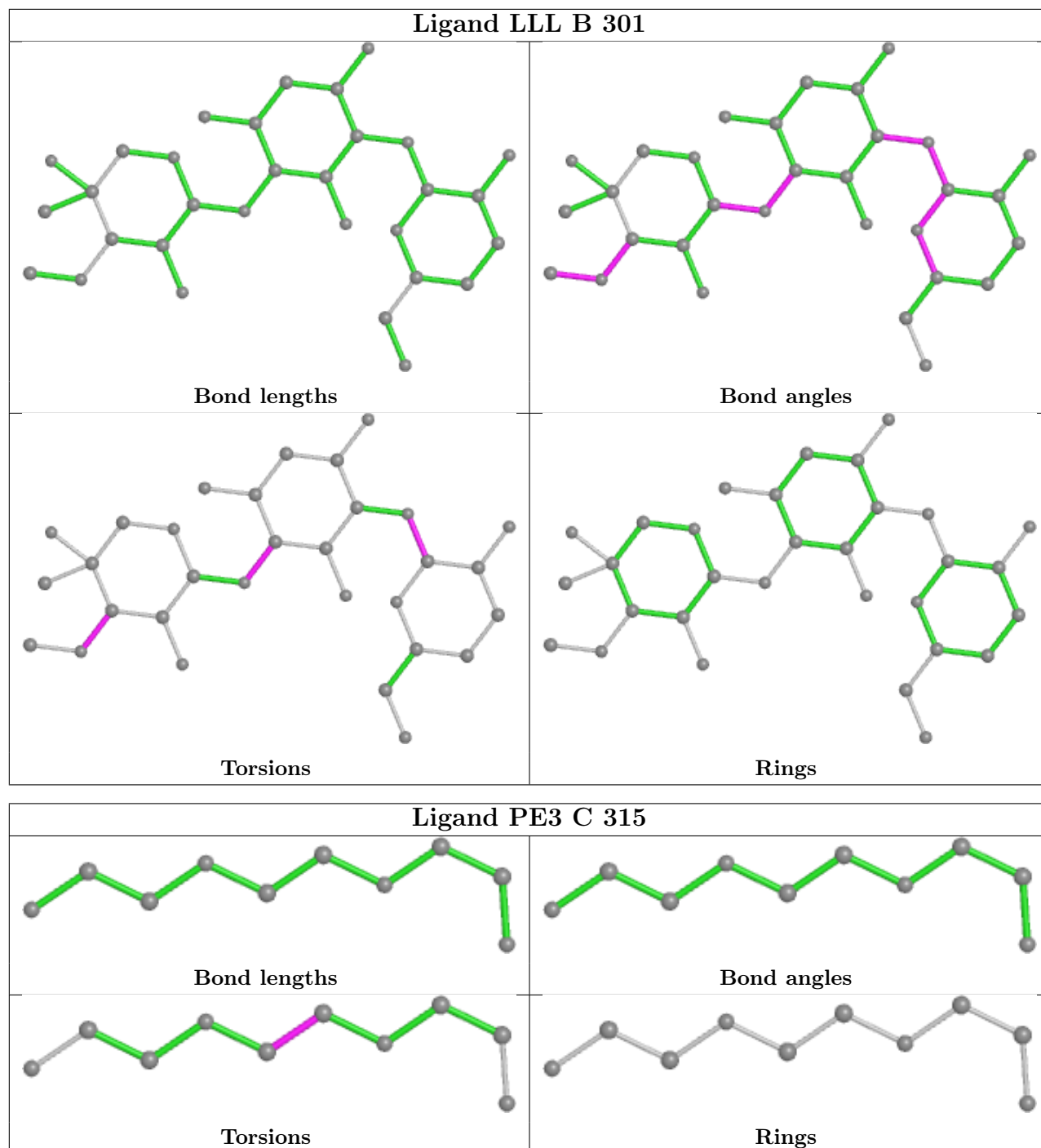
No monomer is involved in short contacts.

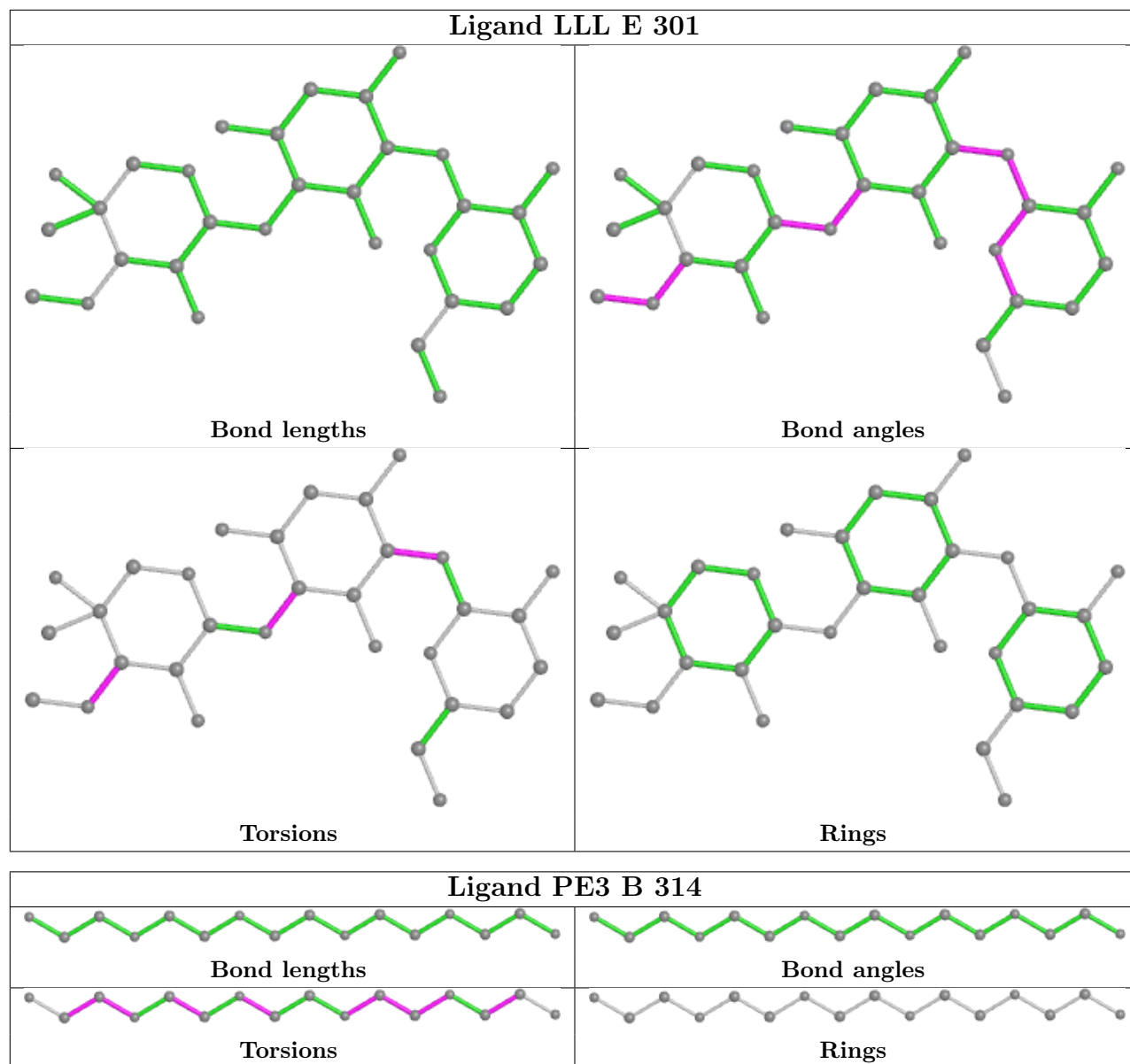
The following is a two-dimensional graphical depiction of Mogul quality analysis of bond lengths, bond angles, torsion angles, and ring geometry for all instances of the Ligand of Interest. In addition, ligands with molecular weight > 250 and outliers as shown on the validation Tables will also be included. For torsion angles, if less than 5% of the Mogul distribution of torsion angles is within 10 degrees of the torsion angle in question, then that torsion angle is considered an outlier. Any bond that is central to one or more torsion angles identified as an outlier by Mogul will be highlighted in the graph. For rings, the root-mean-square deviation (RMSD) between the ring in question and similar rings identified by Mogul is calculated over all ring torsion angles. If the

average RMSD is greater than 60 degrees and the minimal RMSD between the ring in question and any Mogul-identified rings is also greater than 60 degrees, then that ring is considered an outlier. The outliers are highlighted in purple. The color gray indicates Mogul did not find sufficient equivalents in the CSD to analyse the geometry.

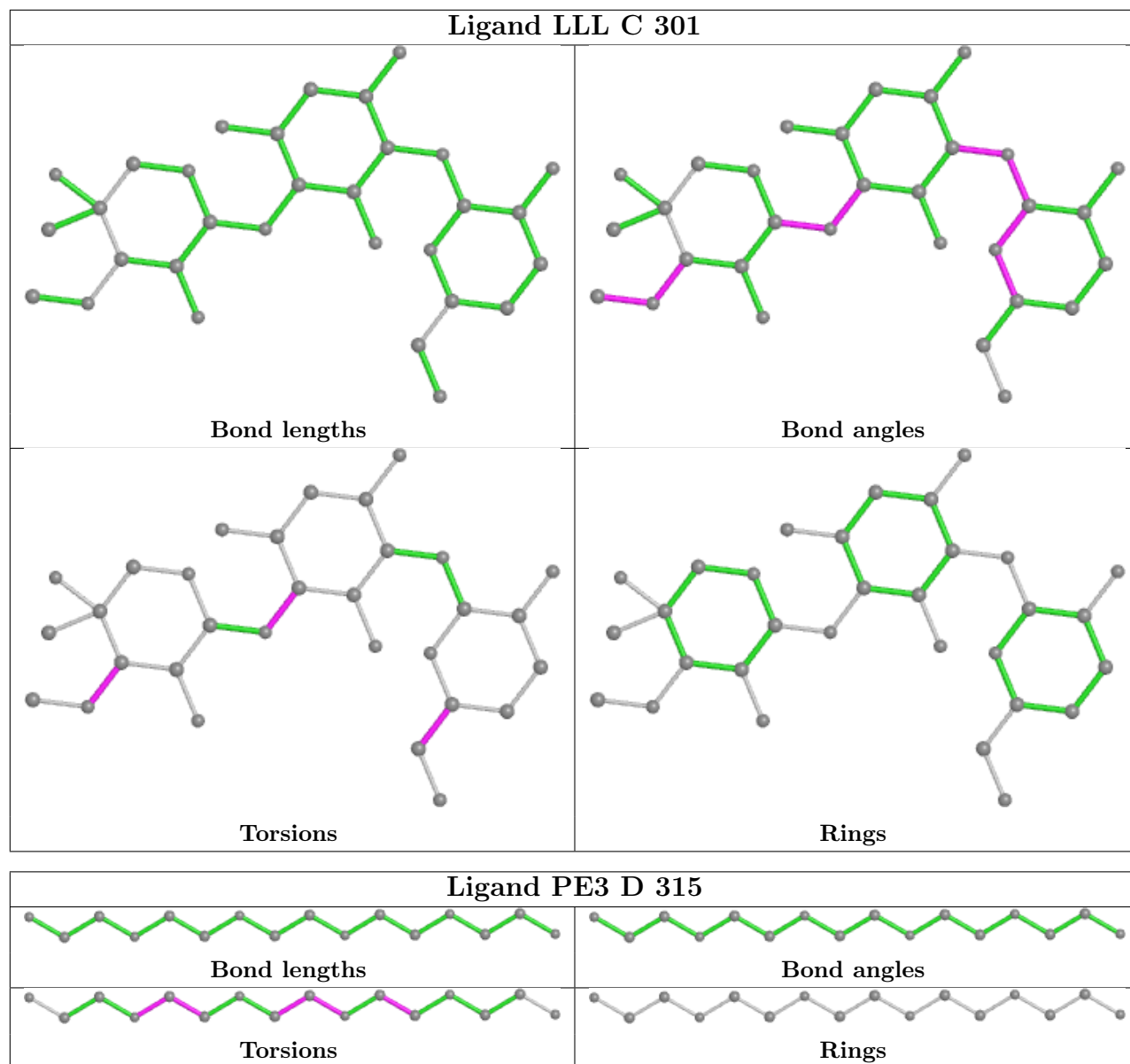


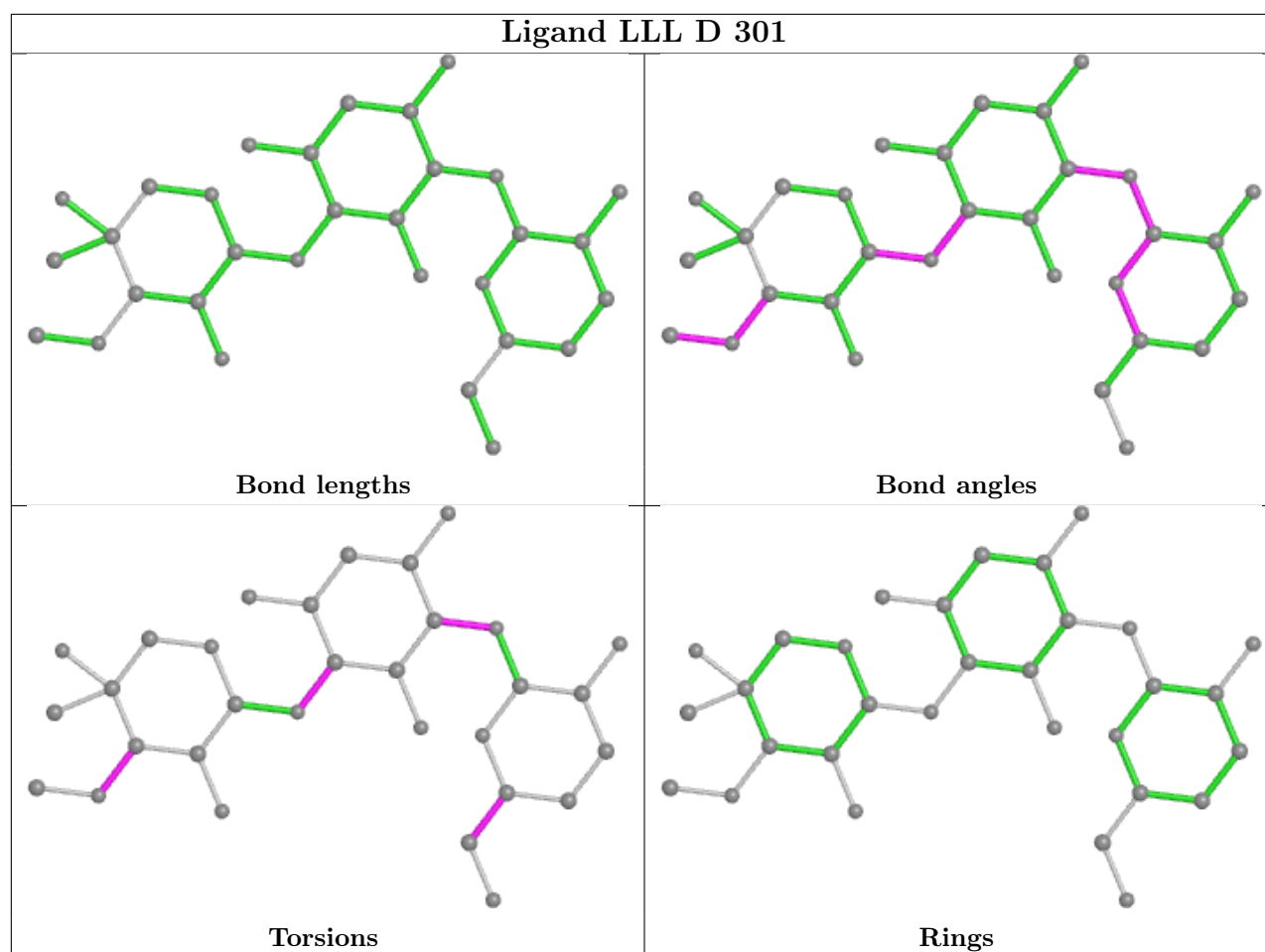












#### 4.7 Other polymers [i](#)

There are no such residues in this entry.

#### 4.8 Polymer linkage issues [i](#)

There are no chain breaks in this entry.

## 5 Fit of model and data [i](#)

### 5.1 Protein, DNA and RNA chains [i](#)

EDS failed to run properly - this section is therefore empty.

### 5.2 Non-standard residues in protein, DNA, RNA chains [i](#)

EDS failed to run properly - this section is therefore empty.

### 5.3 Carbohydrates [i](#)

EDS failed to run properly - this section is therefore empty.

### 5.4 Ligands [i](#)

EDS failed to run properly - this section is therefore empty.

### 5.5 Other polymers [i](#)

EDS failed to run properly - this section is therefore empty.