



wwPDB NMR Structure Validation Summary Report ⓘ

Apr 21, 2024 – 03:45 AM EDT

PDB ID : 2MG8
BMRB ID : 19592
Title : Solution structure of TFF1 Estrogen Response Element complexed with DNA
Bis-intercalating Anticancer Drug XR5944 (MLN944)
Authors : Lin, C.
Deposited on : 2013-10-30

This is a wwPDB NMR Structure Validation Summary Report for a publicly released PDB entry.

We welcome your comments at validation@mail.wwpdb.org

A user guide is available at

<https://www.wwpdb.org/validation/2017/NMRValidationReportHelp>

with specific help available everywhere you see the ⓘ symbol.

The types of validation reports are described at

<http://www.wwpdb.org/validation/2017/FAQs#types>.

The following versions of software and data (see [references ⓘ](#)) were used in the production of this report:

MolProbity : 4.02b-467
Mogul : 1.8.5 (274361), CSD as541be (2020)
buster-report : 1.1.7 (2018)
Percentile statistics : 20191225.v01 (using entries in the PDB archive December 25th 2019)
wwPDB-RCI : v_1n_11_5_13_A (Berjanski et al., 2005)
PANAV : Wang et al. (2010)
wwPDB-ShiftChecker : v1.2
Ideal geometry (proteins) : Engh & Huber (2001)
Ideal geometry (DNA, RNA) : Parkinson et al. (1996)
Validation Pipeline (wwPDB-VP) : 2.36.2

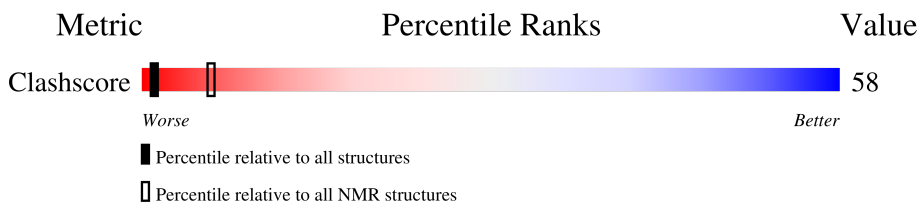
1 Overall quality at a glance

The following experimental techniques were used to determine the structure:

SOLUTION NMR



The overall completeness of chemical shifts assignment is 45%.

Percentile scores (ranging between 0-100) for global validation metrics of the entry are shown in the following graphic. The table shows the number of entries on which the scores are based.



Metric	Whole archive (#Entries)	NMR archive (#Entries)
Clashscore	158937	12864

The table below summarises the geometric issues observed across the polymeric chains and their fit to the experimental data. The red, orange, yellow and green segments indicate the fraction of residues that contain outliers for ≥ 3 , 2, 1 and 0 types of geometric quality criteria. A cyan segment indicates the fraction of residues that are not part of the well-defined cores, and a grey segment represents the fraction of residues that are not modelled. The numeric value for each fraction is indicated below the corresponding segment, with a dot representing fractions $\leq 5\%$

Mol	Chain	Length	Quality of chain
1	A	15	
2	B	15	

2 Ensemble composition and analysis

This entry contains 14 models. This entry does not contain polypeptide chains, therefore identification of well-defined residues and clustering analysis are not possible. All residues are included in the validation scores.

3 Entry composition i

There are 3 unique types of molecules in this entry. The entry contains 1108 atoms, of which 411 are hydrogens and 0 are deuteriums.

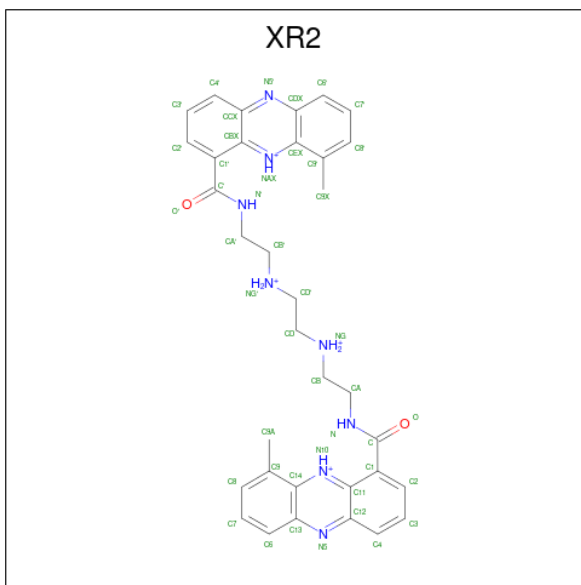
- Molecule 1 is a DNA chain called 5'-D(*AP*GP*GP*TP*CP*AP*CP*GP*GP*TP*GP*GP*CP*CP*A)-3'.

Mol	Chain	Residues	Atoms					Trace	
			Total	C	H	N	O		P
1	A	15	477	146	169	61	87	14	0

- Molecule 2 is a DNA chain called 5'-D(*TP*GP*GP*CP*CP*AP*CP*CP*GP*TP*GP*A
P*CP*CP*T)-3'.

Mol	Chain	Residues	Atoms					Trace	
			Total	C	H	N	O		P
2	B	15	471	144	170	54	89	14	0

- Molecule 3 is 1-METHYL-9-[12-(9-METHYLPHENAZIN-10-IUM-1-YL)-12-OXO-2,11-DIAZA-5,8-DIAZONIADODEC-1-ANOYL]PHENAZIN-10-IUM (three-letter code: XR2) (formula: C₃₄H₃₈N₈O₂).



Mol	Chain	Residues	Atoms				
			Total	C	H	N	O
3	B	1	80	34	36	8	2
3	B	1	80	34	36	8	2

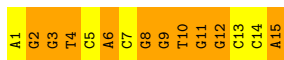
4 Residue-property plots

4.1 Average score per residue in the NMR ensemble

These plots are provided for all protein, RNA, DNA and oligosaccharide chains in the entry. The first graphic is the same as shown in the summary in section 1 of this report. The second graphic shows the sequence where residues are colour-coded according to the number of geometric quality criteria for which they contain at least one outlier: green = 0, yellow = 1, orange = 2 and red = 3 or more. Stretches of 2 or more consecutive residues without any outliers are shown as green connectors. Residues which are classified as ill-defined in the NMR ensemble, are shown in cyan with an underline colour-coded according to the previous scheme. Residues which were present in the experimental sample, but not modelled in the final structure are shown in grey.

- Molecule 1: 5'-D(*AP*GP*GP*TP*CP*AP*CP*GP*GP*TP*GP*GP*CP*CP*A)-3'

Chain A: 



- Molecule 2: 5'-D(*TP*GP*GP*CP*CP*AP*CP*CP*GP*TP*GP*AP*CP*CP*T)-3'

Chain B: 

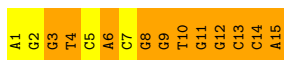


4.2 Residue scores for the representative (author defined) model from the NMR ensemble

The representative model is number 1. Colouring as in section 4.1 above.

- Molecule 1: 5'-D(*AP*GP*GP*TP*CP*AP*CP*GP*GP*TP*GP*GP*CP*CP*A)-3'

Chain A: 



- Molecule 2: 5'-D(*TP*GP*GP*CP*CP*AP*CP*CP*GP*TP*GP*AP*CP*CP*T)-3'

Chain B: 



5 Refinement protocol and experimental data overview

The models were refined using the following method: *simulated annealing, molecular dynamics*.

Of the 50 calculated structures, 14 were deposited, based on the following criterion: *structures with the lowest energy*.

The following table shows the software used for structure solution, optimisation and refinement.

Software name	Classification	Version
X-PLOR	refinement	

The following table shows chemical shift validation statistics as aggregates over all chemical shift files. Detailed validation can be found in section 7 of this report.

Chemical shift file(s)	working_cs.cif
Number of chemical shift lists	1
Total number of shifts	277
Number of shifts mapped to atoms	277
Number of unparsed shifts	0
Number of shifts with mapping errors	0
Number of shifts with mapping warnings	0
Assignment completeness (well-defined parts)	45%

6 Model quality i

6.1 Standard geometry i

Bond lengths and bond angles in the following residue types are not validated in this section: XR2

The Z score for a bond length (or angle) is the number of standard deviations the observed value is removed from the expected value. A bond length (or angle) with $|Z| > 5$ is considered an outlier worth inspection. RMSZ is the (average) root-mean-square of all Z scores of the bond lengths (or angles).

Mol	Chain	Bond lengths		Bond angles	
		RMSZ	#Z>5	RMSZ	#Z>5
1	A	1.24±0.08	1±0/346 (0.2± 0.1%)	2.36±0.01	30±2/533 (5.6± 0.3%)
2	B	1.22±0.09	1±1/336 (0.2± 0.2%)	2.25±0.01	23±1/516 (4.5± 0.2%)
All	All	1.23	17/9548 (0.2%)	2.31	742/14686 (5.1%)

All unique bond outliers are listed below. They are sorted according to the Z-score of the worst occurrence in the ensemble.

Mol	Chain	Res	Type	Atoms	Z	Observed(Å)	Ideal(Å)	Models	
								Worst	Total
2	B	30	DT	C5-C7	12.92	1.57	1.50	3	6
1	A	10	DT	C5-C7	12.72	1.57	1.50	8	5
1	A	4	DT	C5-C7	12.69	1.57	1.50	1	3
2	B	25	DT	C5-C7	5.18	1.53	1.50	6	2
2	B	16	DT	C5-C7	5.16	1.53	1.50	12	1

5 of 70 unique angle outliers are listed below. They are sorted according to the Z-score of the worst occurrence in the ensemble.

Mol	Chain	Res	Type	Atoms	Z	Observed(°)	Ideal(°)	Models	
								Worst	Total
1	A	9	DG	N7-C8-N9	9.69	117.95	113.10	5	14
2	B	18	DG	N7-C8-N9	9.55	117.87	113.10	10	14
2	B	17	DG	N7-C8-N9	9.43	117.82	113.10	12	14
2	B	24	DG	N7-C8-N9	9.29	117.75	113.10	5	14
1	A	3	DG	N7-C8-N9	9.28	117.74	113.10	6	14

There are no chirality outliers.

There are no planarity outliers.

6.2 Too-close contacts [i](#)

In the following table, the Non-H and H(model) columns list the number of non-hydrogen atoms and hydrogen atoms in each chain respectively. The H(added) column lists the number of hydrogen atoms added and optimized by MolProbity. The Clashes column lists the number of clashes averaged over the ensemble.

Mol	Chain	Non-H	H(model)	H(added)	Clashes
1	A	308	169	169	33±6
2	B	301	170	170	30±7
3	B	88	72	76	31±5
All	All	9758	5754	5810	903

The all-atom clashscore is defined as the number of clashes found per 1000 atoms (including hydrogen atoms). The all-atom clashscore for this structure is 58.

5 of 493 unique clashes are listed below, sorted by their clash magnitude.

Atom-1	Atom-2	Clash(Å)	Distance(Å)	Models	
				Worst	Total
2:B:16:DT:HO5'	2:B:16:DT:H6	0.95	1.04	13	5
1:A:6:DA:H2''	1:A:7:DC:O5'	0.93	1.62	4	9
2:B:24:DG:H2''	2:B:25:DT:O5'	0.89	1.66	2	10
2:B:26:DG:H2''	2:B:27:DA:O5'	0.89	1.66	14	9
1:A:13:DC:H2''	1:A:14:DC:O5'	0.88	1.68	5	11

6.3 Torsion angles [i](#)

6.3.1 Protein backbone [i](#)

There are no protein molecules in this entry.

6.3.2 Protein sidechains [i](#)

There are no protein molecules in this entry.

6.3.3 RNA [i](#)

There are no RNA molecules in this entry.

6.4 Non-standard residues in protein, DNA, RNA chains [i](#)

There are no non-standard protein/DNA/RNA residues in this entry.

6.5 Carbohydrates [i](#)

There are no monosaccharides in this entry.

6.6 Ligand geometry [i](#)

2 ligands are modelled in this entry.

In the following table, the Counts columns list the number of bonds for which Mogul statistics could be retrieved, the number of bonds that are observed in the model and the number of bonds that are defined in the chemical component dictionary. The Link column lists molecule types, if any, to which the group is linked. The Z score for a bond length is the number of standard deviations the observed value is removed from the expected value. A bond length with $|Z| > 2$ is considered an outlier worth inspection. RMSZ is the average root-mean-square of all Z scores of the bond lengths.

Mol	Type	Chain	Res	Link	Bond lengths		
					Counts	RMSZ	#Z>2
3	XR2	B	101	-	49,49,49	1.31±0.01	6±0 (12±0%)
3	XR2	B	102	-	49,49,49	1.31±0.01	6±0 (12±0%)

In the following table, the Counts columns list the number of angles for which Mogul statistics could be retrieved, the number of angles that are observed in the model and the number of angles that are defined in the chemical component dictionary. The Link column lists molecule types, if any, to which the group is linked. The Z score for a bond angle is the number of standard deviations the observed value is removed from the expected value. A bond angle with $|Z| > 2$ is considered an outlier worth inspection. RMSZ is the average root-mean-square of all Z scores of the bond angles.

Mol	Type	Chain	Res	Link	Bond angles		
					Counts	RMSZ	#Z>2
3	XR2	B	101	-	62,68,68	1.64±0.02	13±1 (20±1%)
3	XR2	B	102	-	62,68,68	1.65±0.02	12±1 (19±0%)

In the following table, the Chirals column lists the number of chiral outliers, the number of chiral centers analysed, the number of these observed in the model and the number defined in the chemical component dictionary. Similar counts are reported in the Torsion and Rings columns. '-' means no outliers of that kind were identified.

Mol	Type	Chain	Res	Link	Chirals	Torsions	Rings
3	XR2	B	102	-	-	0±0,21,21,21	0±0,6,6,6
3	XR2	B	101	-	-	0±0,21,21,21	0±0,6,6,6

5 of 12 unique bond outliers are listed below. They are sorted according to the Z-score of the worst

occurrence in the ensemble.

Mol	Chain	Res	Type	Atoms	Z	Observed(Å)	Ideal(Å)	Models	
								Worst	Total
3	B	101	XR2	C1'-CBX	3.85	1.37	1.43	3	14
3	B	102	XR2	C1'-CBX	3.80	1.37	1.43	7	14
3	B	101	XR2	C1-C11	3.65	1.37	1.43	6	14
3	B	102	XR2	C1-C11	3.59	1.38	1.43	8	14
3	B	101	XR2	C14-C13	2.82	1.38	1.42	10	14

5 of 28 unique angle outliers are listed below. They are sorted according to the Z-score of the worst occurrence in the ensemble.

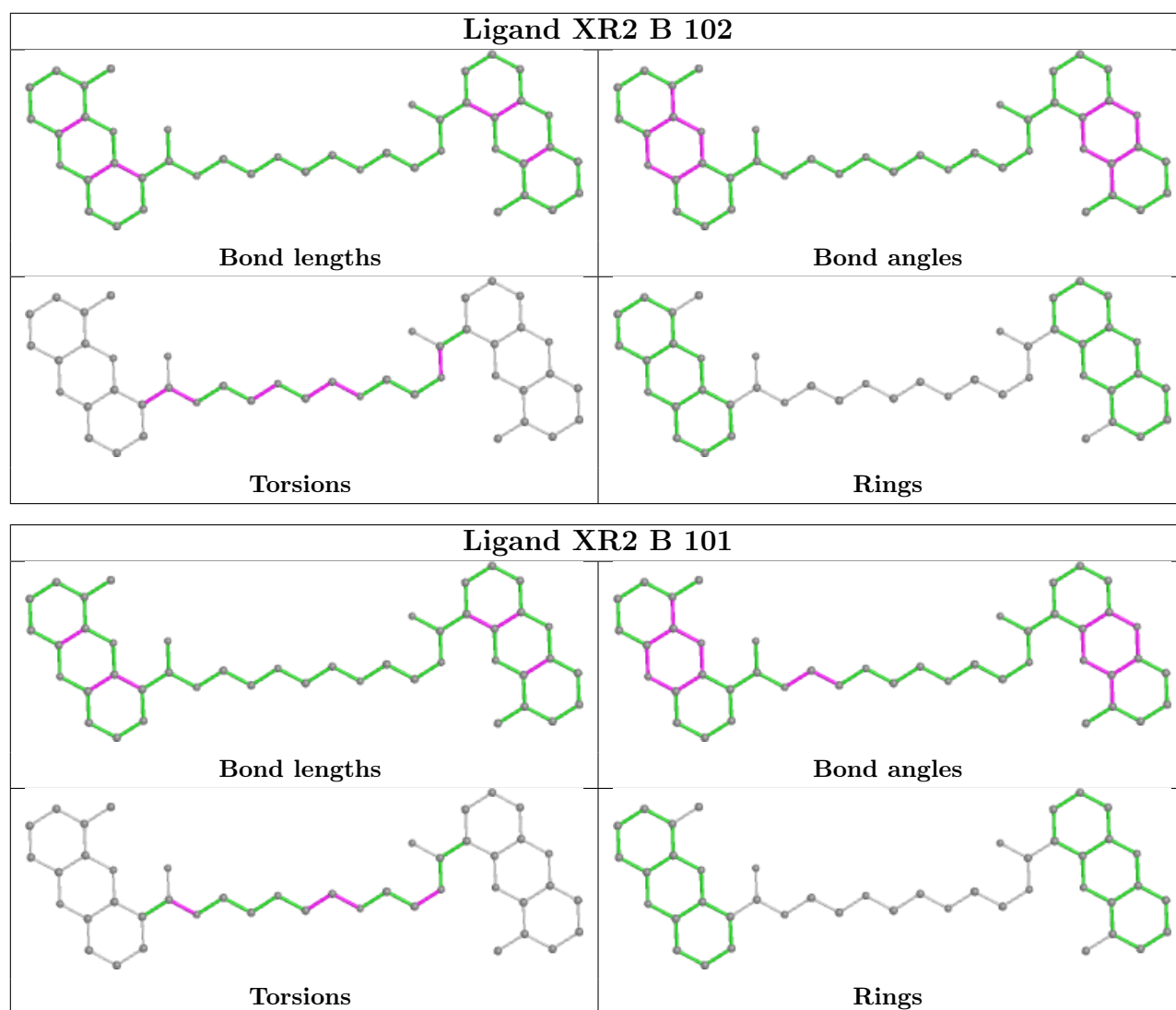
Mol	Chain	Res	Type	Atoms	Z	Observed(°)	Ideal(°)	Models	
								Worst	Total
3	B	102	XR2	CCX-CBX-NAX	3.97	118.03	121.56	5	14
3	B	101	XR2	C12-C11-N10	3.97	118.03	121.56	9	14
3	B	102	XR2	C12-C11-N10	3.96	118.04	121.56	13	14
3	B	101	XR2	CCX-CBX-NAX	3.91	118.08	121.56	1	14
3	B	101	XR2	C13-C14-N10	3.64	118.33	121.56	9	14

There are no chirality outliers.

There are no torsion outliers.

There are no ring outliers.

The following is a two-dimensional graphical depiction of Mogul quality analysis of bond lengths, bond angles, torsion angles, and ring geometry for all instances of the Ligand of Interest. In addition, ligands with molecular weight > 250 and outliers as shown on the validation Tables will also be included. For torsion angles, if less than 5% of the Mogul distribution of torsion angles is within 10 degrees of the torsion angle in question, then that torsion angle is considered an outlier. Any bond that is central to one or more torsion angles identified as an outlier by Mogul will be highlighted in the graph. For rings, the root-mean-square deviation (RMSD) between the ring in question and similar rings identified by Mogul is calculated over all ring torsion angles. If the average RMSD is greater than 60 degrees and the minimal RMSD between the ring in question and any Mogul-identified rings is also greater than 60 degrees, then that ring is considered an outlier. The outliers are highlighted in purple. The color gray indicates Mogul did not find sufficient equivalents in the CSD to analyse the geometry.



6.7 Other polymers [i](#)

There are no such molecules in this entry.

6.8 Polymer linkage issues [i](#)

There are no chain breaks in this entry.

7 Chemical shift validation [i](#)

The completeness of assignment taking into account all chemical shift lists is 45% for the well-defined parts and 45% for the entire structure.

7.1 Chemical shift list 1

File name: working_cs.cif

Chemical shift list name: *assigned_chem_shift_list_1*

7.1.1 Bookkeeping [i](#)

The following table shows the results of parsing the chemical shift list and reports the number of nuclei with statistically unusual chemical shifts.

Total number of shifts	277
Number of shifts mapped to atoms	277
Number of unparsed shifts	0
Number of shifts with mapping errors	0
Number of shifts with mapping warnings	0
Number of shift outliers (ShiftChecker)	0

7.1.2 Chemical shift referencing [i](#)

No chemical shift referencing corrections were calculated (not enough data).

7.1.3 Completeness of resonance assignments [i](#)

The following table shows the completeness of the chemical shift assignments for the well-defined regions of the structure. The overall completeness is 45%, i.e. 272 atoms were assigned a chemical shift out of a possible 600. 0 out of 0 assigned methyl groups (LEU and VAL) were assigned stereospecifically.

	Total	¹ H	¹³ C	¹⁵ N
Sugar	209/360 (58%)	209/210 (100%)	0/150 (0%)	0/0 (—%)
Base	63/240 (26%)	63/150 (42%)	0/50 (0%)	0/40 (0%)
Overall	272/600 (45%)	272/360 (76%)	0/200 (0%)	0/40 (0%)

7.1.4 Statistically unusual chemical shifts [i](#)

There are no statistically unusual chemical shifts.

7.1.5 Random Coil Index (RCI) plots

No *random coil index*(RCI) plot could be generated from the current chemical shift list. RCI is only applicable to proteins