



# Full wwPDB X-ray Structure Validation Report ⓘ

May 24, 2020 – 03:02 pm BST

PDB ID : 6MEP  
Title : Crystal structure of the catalytic domain of the proto-oncogene tyrosine-protein kinase MER in complex with inhibitor UNC3437  
Authors : Da, C.; Zhang, D.; Stashko, M.A.; Cheng, A.; Hunter, D.; Norris-Drouin, J.; Graves, L.; Machius, M.; Miley, M.J.; DeRyckere, D.; Earp, H.S.; Graham, D.K.; Frye, S.V.; Wang, X.; Kireev, D.  
Deposited on : 2018-09-06  
Resolution : 2.89 Å(reported)

This is a Full wwPDB X-ray Structure Validation Report for a publicly released PDB entry.

We welcome your comments at [validation@mail.wwpdb.org](mailto:validation@mail.wwpdb.org)

A user guide is available at

<https://www.wwpdb.org/validation/2017/XrayValidationReportHelp>

with specific help available everywhere you see the ⓘ symbol.

---

The following versions of software and data (see [references ⓘ](#)) were used in the production of this report:

MolProbity : 4.02b-467  
Mogul : 1.8.5 (274361), CSD as541be (2020)  
Xtriage (Phenix) : 1.13  
EDS : 2.11  
buster-report : 1.1.7 (2018)  
Percentile statistics : 20191225.v01 (using entries in the PDB archive December 25th 2019)  
Refmac : 5.8.0158  
CCP4 : 7.0.044 (Gargrove)  
Ideal geometry (proteins) : Engh & Huber (2001)  
Ideal geometry (DNA, RNA) : Parkinson et al. (1996)  
Validation Pipeline (wwPDB-VP) : 2.11

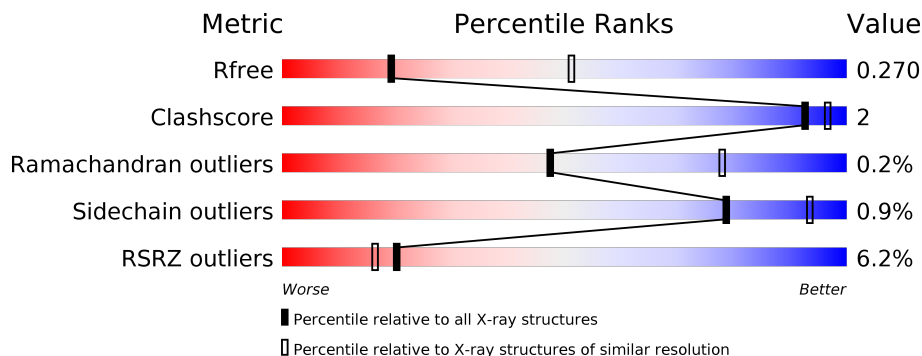
# 1 Overall quality at a glance

The following experimental techniques were used to determine the structure:

*X-RAY DIFFRACTION*

The reported resolution of this entry is 2.89 Å.

Percentile scores (ranging between 0-100) for global validation metrics of the entry are shown in the following graphic. The table shows the number of entries on which the scores are based.



Metric	Whole archive (#Entries)	Similar resolution (#Entries, resolution range(Å))
$R_{free}$	130704	1957 (2.90-2.90)
Clashscore	141614	2172 (2.90-2.90)
Ramachandran outliers	138981	2115 (2.90-2.90)
Sidechain outliers	138945	2117 (2.90-2.90)
RSRZ outliers	127900	1906 (2.90-2.90)

The table below summarises the geometric issues observed across the polymeric chains and their fit to the electron density. The red, orange, yellow and green segments on the lower bar indicate the fraction of residues that contain outliers for  $\geq 3$ , 2, 1 and 0 types of geometric quality criteria respectively. A grey segment represents the fraction of residues that are not modelled. The numeric value for each fraction is indicated below the corresponding segment, with a dot representing fractions  $\leq 5\%$ . The upper red bar (where present) indicates the fraction of residues that have poor fit to the electron density. The numeric value is given above the bar.

Mol	Chain	Length	Quality of chain
1	A	313	
1	B	313	

## 2 Entry composition i

There are 5 unique types of molecules in this entry. The entry contains 8005 atoms, of which 3996 are hydrogens and 0 are deuteriums.

In the tables below, the ZeroOcc column contains the number of atoms modelled with zero occupancy, the AltConf column contains the number of residues with at least one atom in alternate conformation and the Trace column contains the number of residues modelled with at most 2 atoms.

- Molecule 1 is a protein called Tyrosine-protein kinase Mer.

Mol	Chain	Residues	Atoms					ZeroOcc	AltConf	Trace	
			Total	C	H	N	O				S
1	A	250	4023	1290	2016	332	367	18	0	0	0
1	B	236	3793	1219	1896	314	346	18	0	0	0

There are 36 discrepancies between the modelled and reference sequences:

Chain	Residue	Modelled	Actual	Comment	Reference
A	552	MET	-	expression tag	UNP Q12866
A	553	GLY	-	expression tag	UNP Q12866
A	554	SER	-	expression tag	UNP Q12866
A	555	SER	-	expression tag	UNP Q12866
A	556	HIS	-	expression tag	UNP Q12866
A	557	HIS	-	expression tag	UNP Q12866
A	558	HIS	-	expression tag	UNP Q12866
A	559	HIS	-	expression tag	UNP Q12866
A	560	HIS	-	expression tag	UNP Q12866
A	561	HIS	-	expression tag	UNP Q12866
A	562	SER	-	expression tag	UNP Q12866
A	563	SER	-	expression tag	UNP Q12866
A	564	GLY	-	expression tag	UNP Q12866
A	565	LEU	-	expression tag	UNP Q12866
A	566	VAL	-	expression tag	UNP Q12866
A	567	PRO	-	expression tag	UNP Q12866
A	568	ARG	-	expression tag	UNP Q12866
A	569	GLY	-	expression tag	UNP Q12866
B	552	MET	-	expression tag	UNP Q12866
B	553	GLY	-	expression tag	UNP Q12866
B	554	SER	-	expression tag	UNP Q12866
B	555	SER	-	expression tag	UNP Q12866
B	556	HIS	-	expression tag	UNP Q12866
B	557	HIS	-	expression tag	UNP Q12866
B	558	HIS	-	expression tag	UNP Q12866

*Continued on next page...*

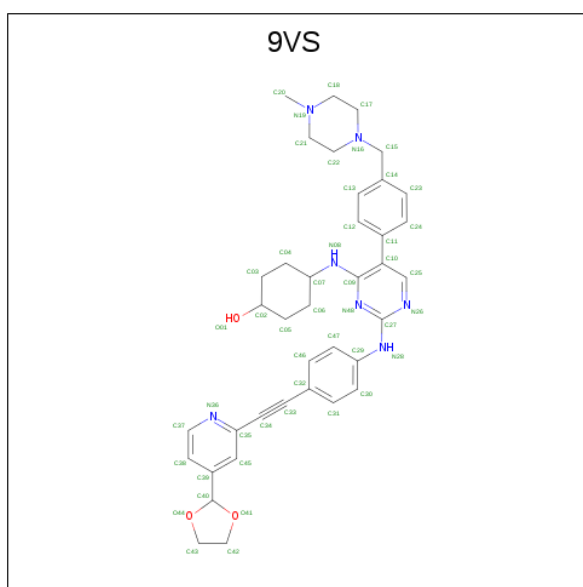
Continued from previous page...

Chain	Residue	Modelled	Actual	Comment	Reference
B	559	HIS	-	expression tag	UNP Q12866
B	560	HIS	-	expression tag	UNP Q12866
B	561	HIS	-	expression tag	UNP Q12866
B	562	SER	-	expression tag	UNP Q12866
B	563	SER	-	expression tag	UNP Q12866
B	564	GLY	-	expression tag	UNP Q12866
B	565	LEU	-	expression tag	UNP Q12866
B	566	VAL	-	expression tag	UNP Q12866
B	567	PRO	-	expression tag	UNP Q12866
B	568	ARG	-	expression tag	UNP Q12866
B	569	GLY	-	expression tag	UNP Q12866

- Molecule 2 is CHLORIDE ION (three-letter code: CL) (formula: Cl).

Mol	Chain	Residues	Atoms	ZeroOcc	AltConf
2	B	2	Total Cl 2 2	0	0
2	A	3	Total Cl 3 3	0	0

- Molecule 3 is cis-4-[(2-[(4-{[4-(1,3-dioxolan-2-yl)pyridin-2-yl]ethynyl}phenyl)amino]-5-{4-(4-methylpiperazin-1-yl)methyl}phenyl}pyrimidin-4-yl)amino]cyclohexan-1-ol (three-letter code: 9VS) (formula: C<sub>38</sub>H<sub>43</sub>N<sub>7</sub>O<sub>3</sub>).



Mol	Chain	Residues	Atoms				ZeroOcc	AltConf	
3	A	1	Total	C	H	N	O	0	0
			90	38	42	7	3		
3	B	1	Total	C	H	N	O	0	0
			90	38	42	7	3		

- Molecule 4 is MAGNESIUM ION (three-letter code: MG) (formula: Mg).

Mol	Chain	Residues	Atoms		ZeroOcc	AltConf
4	B	1	Total	Mg	0	0
			1	1		

- Molecule 5 is water.

Mol	Chain	Residues	Atoms		ZeroOcc	AltConf
5	A	2	Total	O	0	0
			2	2		
5	B	1	Total	O	0	0
			1	1		



## 4 Data and refinement statistics

Property	Value	Source
Space group	P 1 21 1	Depositor
Cell constants a, b, c, $\alpha$ , $\beta$ , $\gamma$	51.37Å 92.05Å 69.69Å 90.00° 101.67° 90.00°	Depositor
Resolution (Å)	37.07 – 2.89 37.07 – 2.89	Depositor EDS
% Data completeness (in resolution range)	88.5 (37.07-2.89) 84.8 (37.07-2.89)	Depositor EDS
$R_{merge}$	0.14	Depositor
$R_{sym}$	(Not available)	Depositor
$\langle I/\sigma(I) \rangle$ <sup>1</sup>	3.42 (at 2.90Å)	Xtrriage
Refinement program	PHENIX 1.10.1_2155	Depositor
R, $R_{free}$	0.205 , 0.268 0.207 , 0.270	Depositor DCC
$R_{free}$ test set	1000 reflections (7.91%)	wwPDB-VP
Wilson B-factor (Å <sup>2</sup> )	40.3	Xtrriage
Anisotropy	0.331	Xtrriage
Bulk solvent $k_{sol}$ (e/Å <sup>3</sup> ), $B_{sol}$ (Å <sup>2</sup> )	0.40 , 45.7	EDS
L-test for twinning <sup>2</sup>	$\langle  L  \rangle = 0.50$ , $\langle L^2 \rangle = 0.33$	Xtrriage
Estimated twinning fraction	No twinning to report.	Xtrriage
$F_o, F_c$ correlation	0.89	EDS
Total number of atoms	8005	wwPDB-VP
Average B, all atoms (Å <sup>2</sup> )	42.0	wwPDB-VP

Xtrriage's analysis on translational NCS is as follows: *The largest off-origin peak in the Patterson function is 6.70% of the height of the origin peak. No significant pseudotranslation is detected.*

<sup>1</sup>Intensities estimated from amplitudes.

<sup>2</sup>Theoretical values of  $\langle |L| \rangle$ ,  $\langle L^2 \rangle$  for acentric reflections are 0.5, 0.333 respectively for untwinned datasets, and 0.375, 0.2 for perfectly twinned datasets.

## 5 Model quality [i](#)

### 5.1 Standard geometry [i](#)

Bond lengths and bond angles in the following residue types are not validated in this section: MG, CL, 9VS

The Z score for a bond length (or angle) is the number of standard deviations the observed value is removed from the expected value. A bond length (or angle) with  $|Z| > 5$  is considered an outlier worth inspection. RMSZ is the root-mean-square of all Z scores of the bond lengths (or angles).

Mol	Chain	Bond lengths		Bond angles	
		RMSZ	# Z  >5	RMSZ	# Z  >5
1	A	0.24	0/2049	0.40	0/2768
1	B	0.23	0/1937	0.39	0/2616
All	All	0.24	0/3986	0.40	0/5384

There are no bond length outliers.

There are no bond angle outliers.

There are no chirality outliers.

There are no planarity outliers.

### 5.2 Too-close contacts [i](#)

In the following table, the Non-H and H(model) columns list the number of non-hydrogen atoms and hydrogen atoms in the chain respectively. The H(added) column lists the number of hydrogen atoms added and optimized by MolProbity. The Clashes column lists the number of clashes within the asymmetric unit, whereas Symm-Clashes lists symmetry related clashes.

Mol	Chain	Non-H	H(model)	H(added)	Clashes	Symm-Clashes
1	A	2007	2016	2015	7	0
1	B	1897	1896	1896	5	0
2	A	3	0	0	1	0
2	B	2	0	0	0	0
3	A	48	42	0	0	0
3	B	48	42	0	4	0
4	B	1	0	0	0	0
5	A	2	0	0	0	0
5	B	1	0	0	0	0
All	All	4009	3996	3911	12	0

The all-atom clashscore is defined as the number of clashes found per 1000 atoms (including



hydrogen atoms). The all-atom clashscore for this structure is 2.

All (12) close contacts within the same asymmetric unit are listed below, sorted by their clash magnitude.

Atom-1	Atom-2	Interatomic distance (Å)	Clash overlap (Å)
1:B:671:LEU:HD22	3:B:904:9VS:O41	2.02	0.59
1:A:770:GLU:OE1	1:A:844:ARG:NH2	2.37	0.52
1:A:732:ARG:NH2	2:A:902:CL:CL	2.76	0.51
1:B:652:LEU:HA	3:B:904:9VS:C42	2.42	0.49
1:B:650:ILE:HG12	3:B:904:9VS:C43	2.43	0.48
1:B:650:ILE:HG23	3:B:904:9VS:O44	2.14	0.46
1:A:743:GLY:O	1:A:744:LEU:HB2	2.16	0.45
1:A:580:VAL:HG11	1:A:639:ALA:HA	1.99	0.44
1:A:637:GLU:OE2	1:A:744:LEU:N	2.48	0.44
1:B:670:ILE:C	1:B:671:LEU:HD23	2.38	0.44
1:A:721:HIS:CG	1:A:742:PHE:HB3	2.56	0.41
1:A:637:GLU:HG2	1:A:641:MET:SD	2.62	0.40

There are no symmetry-related clashes.

## 5.3 Torsion angles [i](#)

### 5.3.1 Protein backbone [i](#)

In the following table, the Percentiles column shows the percent Ramachandran outliers of the chain as a percentile score with respect to all X-ray entries followed by that with respect to entries of similar resolution.

The Analysed column shows the number of residues for which the backbone conformation was analysed, and the total number of residues.

Mol	Chain	Analysed	Favoured	Allowed	Outliers	Percentiles	
1	A	242/313 (77%)	235 (97%)	7 (3%)	0	100	100
1	B	226/313 (72%)	219 (97%)	6 (3%)	1 (0%)	34	66
All	All	468/626 (75%)	454 (97%)	13 (3%)	1 (0%)	47	78

All (1) Ramachandran outliers are listed below:

Mol	Chain	Res	Type
1	B	823	GLU

### 5.3.2 Protein sidechains [i](#)

In the following table, the Percentiles column shows the percent sidechain outliers of the chain as a percentile score with respect to all X-ray entries followed by that with respect to entries of similar resolution.

The Analysed column shows the number of residues for which the sidechain conformation was analysed, and the total number of residues.

Mol	Chain	Analysed	Rotameric	Outliers	Percentiles	
1	A	224/280 (80%)	223 (100%)	1 (0%)	91	97
1	B	211/280 (75%)	208 (99%)	3 (1%)	67	89
All	All	435/560 (78%)	431 (99%)	4 (1%)	78	93

All (4) residues with a non-rotameric sidechain are listed below:

Mol	Chain	Res	Type
1	A	721	HIS
1	B	652	LEU
1	B	671	LEU
1	B	741	ASP

Some sidechains can be flipped to improve hydrogen bonding and reduce clashes. There are no such sidechains identified.

### 5.3.3 RNA [i](#)

There are no RNA molecules in this entry.

## 5.4 Non-standard residues in protein, DNA, RNA chains [i](#)

There are no non-standard protein/DNA/RNA residues in this entry.

## 5.5 Carbohydrates [i](#)

There are no carbohydrates in this entry.

## 5.6 Ligand geometry [i](#)

Of 8 ligands modelled in this entry, 6 are monoatomic - leaving 2 for Mogul analysis.

In the following table, the Counts columns list the number of bonds (or angles) for which Mogul statistics could be retrieved, the number of bonds (or angles) that are observed in the model and the number of bonds (or angles) that are defined in the Chemical Component Dictionary. The Link column lists molecule types, if any, to which the group is linked. The Z score for a bond length (or angle) is the number of standard deviations the observed value is removed from the expected value. A bond length (or angle) with  $|Z| > 2$  is considered an outlier worth inspection. RMSZ is the root-mean-square of all Z scores of the bond lengths (or angles).

Mol	Type	Chain	Res	Link	Bond lengths			Bond angles		
					Counts	RMSZ	# Z  > 2	Counts	RMSZ	# Z  > 2
3	9VS	A	904	-	54,54,54	3.05	20 (37%)	73,74,74	4.50	26 (35%)
3	9VS	B	904	-	54,54,54	3.17	20 (37%)	73,74,74	3.65	21 (28%)

In the following table, the Chirals column lists the number of chiral outliers, the number of chiral centers analysed, the number of these observed in the model and the number defined in the Chemical Component Dictionary. Similar counts are reported in the Torsion and Rings columns. '-' means no outliers of that kind were identified.

Mol	Type	Chain	Res	Link	Chirals	Torsions	Rings
3	9VS	A	904	-	-	3/24/52/52	0/7/7/7
3	9VS	B	904	-	-	5/24/52/52	0/7/7/7

All (40) bond length outliers are listed below:

Mol	Chain	Res	Type	Atoms	Z	Observed(Å)	Ideal(Å)
3	A	904	9VS	C09-N08	9.29	1.49	1.35
3	B	904	9VS	C09-N08	9.20	1.49	1.35
3	B	904	9VS	C15-N16	-8.00	1.32	1.47
3	A	904	9VS	C20-N19	-7.86	1.28	1.46
3	A	904	9VS	C15-N16	-7.86	1.32	1.47
3	B	904	9VS	C20-N19	-7.62	1.29	1.46
3	B	904	9VS	C27-N28	6.89	1.50	1.36
3	B	904	9VS	C34-C33	6.35	1.35	1.19
3	A	904	9VS	C27-N28	6.22	1.49	1.36
3	B	904	9VS	C35-C34	6.16	1.54	1.44
3	B	904	9VS	C29-N28	5.61	1.53	1.40
3	A	904	9VS	C34-C33	5.47	1.33	1.19
3	A	904	9VS	C29-N28	5.30	1.52	1.40
3	A	904	9VS	C35-C34	5.26	1.53	1.44
3	B	904	9VS	C21-N19	-4.73	1.36	1.46
3	A	904	9VS	C21-N19	-4.41	1.36	1.46
3	B	904	9VS	C10-C11	4.22	1.57	1.49
3	A	904	9VS	C17-N16	-4.15	1.35	1.46
3	B	904	9VS	C17-N16	-4.05	1.35	1.46

*Continued on next page...*

*Continued from previous page...*

Mol	Chain	Res	Type	Atoms	Z	Observed(Å)	Ideal(Å)
3	B	904	9VS	O44-C40	-3.93	1.31	1.41
3	A	904	9VS	O44-C40	-3.72	1.31	1.41
3	A	904	9VS	C10-C11	3.69	1.56	1.49
3	B	904	9VS	O41-C40	-3.68	1.31	1.41
3	A	904	9VS	C18-N19	-3.58	1.38	1.46
3	A	904	9VS	O41-C40	-3.51	1.32	1.41
3	B	904	9VS	C18-N19	-3.45	1.39	1.46
3	B	904	9VS	C22-N16	-3.18	1.38	1.46
3	A	904	9VS	C27-N26	-3.08	1.30	1.34
3	B	904	9VS	C15-C14	2.99	1.56	1.51
3	B	904	9VS	C24-C23	2.99	1.44	1.38
3	B	904	9VS	O41-C42	-2.93	1.34	1.42
3	A	904	9VS	C15-C14	2.91	1.56	1.51
3	A	904	9VS	C24-C23	2.78	1.43	1.38
3	A	904	9VS	C22-N16	-2.77	1.39	1.46
3	B	904	9VS	C43-C42	-2.76	1.40	1.49
3	A	904	9VS	O41-C42	-2.72	1.34	1.42
3	A	904	9VS	C43-C42	-2.51	1.41	1.49
3	B	904	9VS	C27-N26	-2.48	1.31	1.34
3	B	904	9VS	O44-C43	-2.47	1.35	1.42
3	A	904	9VS	O44-C43	-2.27	1.36	1.42

All (47) bond angle outliers are listed below:

Mol	Chain	Res	Type	Atoms	Z	Observed(°)	Ideal(°)
3	A	904	9VS	C32-C33-C34	-22.06	110.29	176.32
3	B	904	9VS	C35-C34-C33	-20.02	129.64	176.11
3	A	904	9VS	C35-C34-C33	-19.68	130.43	176.11
3	B	904	9VS	C32-C33-C34	-14.89	131.77	176.32
3	A	904	9VS	C34-C35-N36	10.59	130.66	117.27
3	A	904	9VS	C45-C35-C34	-10.49	108.59	119.83
3	A	904	9VS	O44-C40-C39	7.58	126.67	112.42
3	B	904	9VS	O44-C40-C39	7.08	125.72	112.42
3	B	904	9VS	N26-C27-N48	-6.28	120.60	126.55
3	B	904	9VS	O41-C40-C39	5.67	123.07	112.42
3	A	904	9VS	C25-C10-C09	5.45	119.88	114.55
3	B	904	9VS	C37-N36-C35	5.44	124.31	116.53
3	A	904	9VS	O41-C40-C39	5.17	122.14	112.42
3	A	904	9VS	C38-C39-C40	4.69	129.60	120.38
3	A	904	9VS	N26-C27-N48	-4.64	122.15	126.55
3	A	904	9VS	C45-C39-C40	-4.46	112.30	119.80
3	B	904	9VS	C25-C10-C09	4.40	118.85	114.55

*Continued on next page...*

*Continued from previous page...*

Mol	Chain	Res	Type	Atoms	Z	Observed(°)	Ideal(°)
3	B	904	9VS	C38-C37-N36	-4.21	118.72	123.96
3	B	904	9VS	C45-C35-N36	-4.15	119.41	123.73
3	A	904	9VS	C10-C25-N26	-3.86	118.43	124.49
3	B	904	9VS	C25-N26-C27	3.81	121.63	115.88
3	A	904	9VS	C46-C32-C33	-3.80	114.07	120.78
3	A	904	9VS	C21-N19-C18	3.64	114.62	109.52
3	B	904	9VS	C10-C25-N26	-3.64	118.76	124.49
3	B	904	9VS	C45-C35-C34	3.53	123.62	119.83
3	A	904	9VS	C25-N26-C27	3.48	121.14	115.88
3	A	904	9VS	C22-C21-N19	3.43	114.68	110.80
3	B	904	9VS	C29-N28-C27	-3.40	119.37	129.23
3	A	904	9VS	C37-N36-C35	3.01	120.84	116.53
3	A	904	9VS	C45-C35-N36	-2.87	120.75	123.73
3	B	904	9VS	C06-C07-C04	2.82	115.71	110.82
3	B	904	9VS	C05-C06-C07	2.81	114.59	111.48
3	A	904	9VS	C25-C10-C11	-2.80	115.33	119.52
3	A	904	9VS	C14-C15-N16	-2.79	107.70	113.12
3	A	904	9VS	C38-C37-N36	-2.68	120.63	123.96
3	A	904	9VS	C31-C32-C33	2.61	125.38	120.78
3	A	904	9VS	C29-N28-C27	-2.59	121.72	129.23
3	B	904	9VS	O44-C40-O41	2.59	111.20	105.79
3	A	904	9VS	O44-C40-O41	2.50	111.01	105.79
3	A	904	9VS	C35-C45-C39	2.44	121.02	119.08
3	B	904	9VS	C06-C07-N08	-2.42	106.83	110.60
3	B	904	9VS	C10-C09-N08	-2.39	119.88	121.72
3	B	904	9VS	C27-N48-C09	2.37	121.83	116.39
3	B	904	9VS	C14-C15-N16	-2.30	108.67	113.12
3	A	904	9VS	C05-C06-C07	2.08	113.78	111.48
3	B	904	9VS	C21-N19-C18	2.05	112.39	109.52
3	A	904	9VS	C27-N48-C09	2.00	120.97	116.39

There are no chirality outliers.

All (8) torsion outliers are listed below:

Mol	Chain	Res	Type	Atoms
3	A	904	9VS	C33-C34-C35-N36
3	A	904	9VS	C33-C34-C35-C45
3	B	904	9VS	C14-C15-N16-C17
3	B	904	9VS	C14-C15-N16-C22
3	B	904	9VS	C47-C29-N28-C27
3	B	904	9VS	C30-C29-N28-C27
3	A	904	9VS	N48-C09-N08-C07

*Continued on next page...*

*Continued from previous page...*

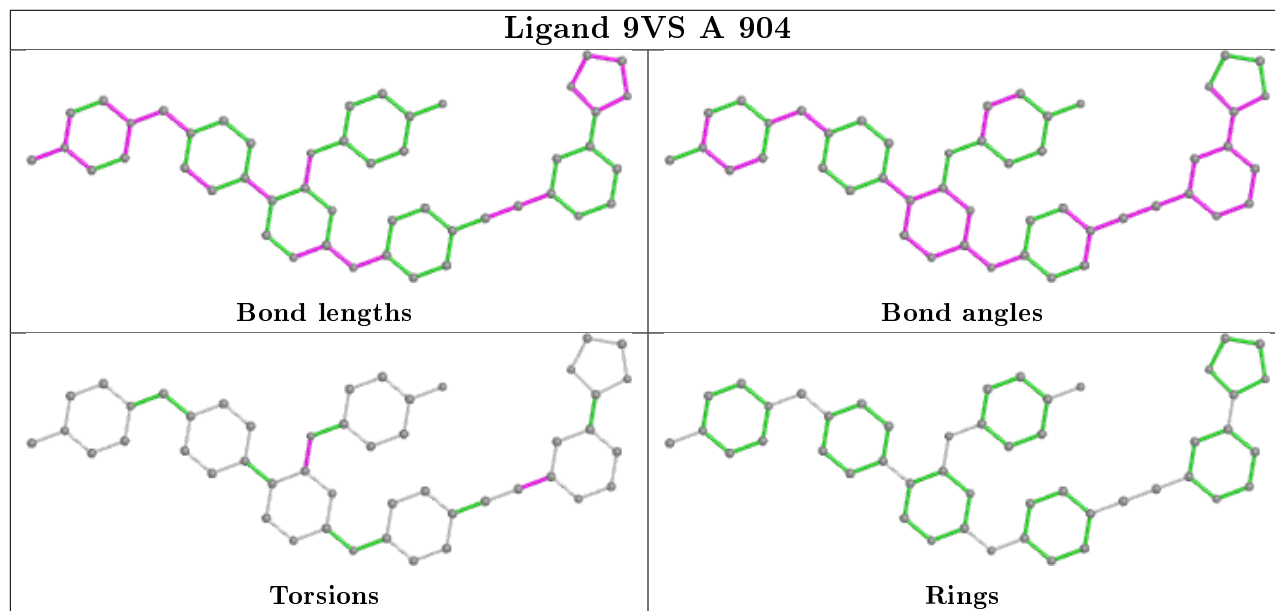
Mol	Chain	Res	Type	Atoms
3	B	904	9VS	C09-C10-C11-C12

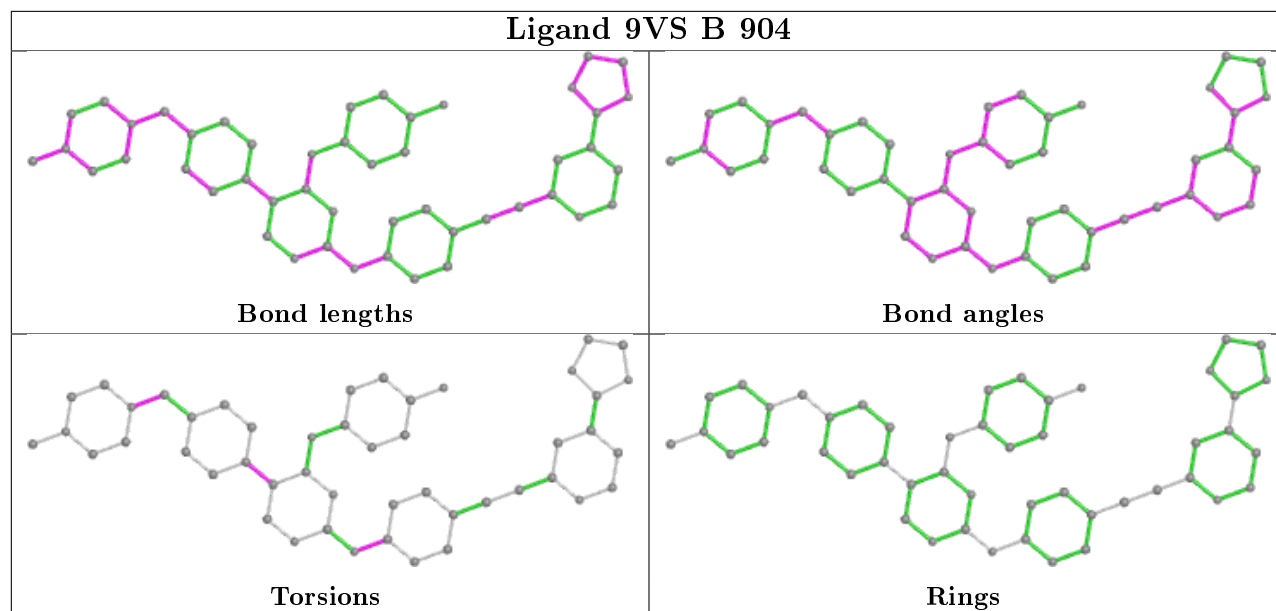
There are no ring outliers.

1 monomer is involved in 4 short contacts:

Mol	Chain	Res	Type	Clashes	Symm-Clashes
3	B	904	9VS	4	0

The following is a two-dimensional graphical depiction of Mogul quality analysis of bond lengths, bond angles, torsion angles, and ring geometry for all instances of the Ligand of Interest. In addition, ligands with molecular weight > 250 and outliers as shown on the validation Tables will also be included. For torsion angles, if less than 5% of the Mogul distribution of torsion angles is within 10 degrees of the torsion angle in question, then that torsion angle is considered an outlier. Any bond that is central to one or more torsion angles identified as an outlier by Mogul will be highlighted in the graph. For rings, the root-mean-square deviation (RMSD) between the ring in question and similar rings identified by Mogul is calculated over all ring torsion angles. If the average RMSD is greater than 60 degrees and the minimal RMSD between the ring in question and any Mogul-identified rings is also greater than 60 degrees, then that ring is considered an outlier. The outliers are highlighted in purple. The color gray indicates Mogul did not find sufficient equivalents in the CSD to analyse the geometry.





## 5.7 Other polymers [i](#)

There are no such residues in this entry.

## 5.8 Polymer linkage issues [i](#)

There are no chain breaks in this entry.

## 6 Fit of model and data

### 6.1 Protein, DNA and RNA chains

In the following table, the column labelled ‘#RSRZ> 2’ contains the number (and percentage) of RSRZ outliers, followed by percent RSRZ outliers for the chain as percentile scores relative to all X-ray entries and entries of similar resolution. The OWAB column contains the minimum, median, 95<sup>th</sup> percentile and maximum values of the occupancy-weighted average B-factor per residue. The column labelled ‘Q< 0.9’ lists the number of (and percentage) of residues with an average occupancy less than 0.9.

Mol	Chain	Analysed	<RSRZ>	#RSRZ>2	OWAB(Å <sup>2</sup> )	Q<0.9
1	A	250/313 (79%)	0.29	17 (6%) 17 13	15, 34, 77, 125	0
1	B	236/313 (75%)	0.33	13 (5%) 25 21	14, 34, 69, 88	0
All	All	486/626 (77%)	0.31	30 (6%) 20 16	14, 34, 70, 125	0

All (30) RSRZ outliers are listed below:

Mol	Chain	Res	Type	RSRZ
1	A	598	PHE	6.1
1	A	596	GLY	4.8
1	B	639	ALA	4.7
1	A	579	ASP	3.8
1	B	598	PHE	3.6
1	A	635	LEU	3.5
1	A	578	GLU	3.4
1	B	581	VAL	3.3
1	B	597	GLU	3.1
1	B	595	GLU	2.6
1	B	640	CYS	2.5
1	A	597	GLU	2.5
1	B	811	ASP	2.4
1	B	810	TYR	2.4
1	B	689	GLU	2.4
1	A	595	GLU	2.3
1	A	775	ARG	2.3
1	B	694	HIS	2.3
1	A	577	LEU	2.3
1	A	769	ILE	2.3
1	A	745	SER	2.3
1	A	656	CYS	2.2
1	A	807	HIS	2.2
1	A	583	ASP	2.2

*Continued on next page...*



*Continued from previous page...*

Mol	Chain	Res	Type	RSRZ
1	B	596	GLY	2.2
1	B	773	ALA	2.2
1	A	633	GLU	2.2
1	A	839	THR	2.1
1	A	743	GLY	2.0
1	B	814	LEU	2.0

## 6.2 Non-standard residues in protein, DNA, RNA chains [i](#)

There are no non-standard protein/DNA/RNA residues in this entry.

## 6.3 Carbohydrates [i](#)

There are no carbohydrates in this entry.

## 6.4 Ligands [i](#)

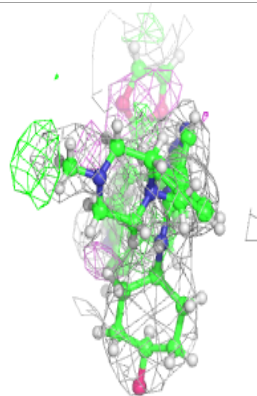
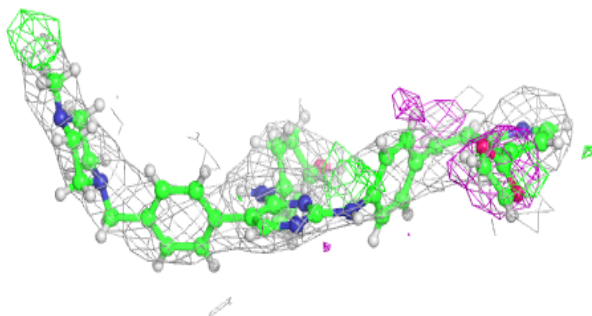
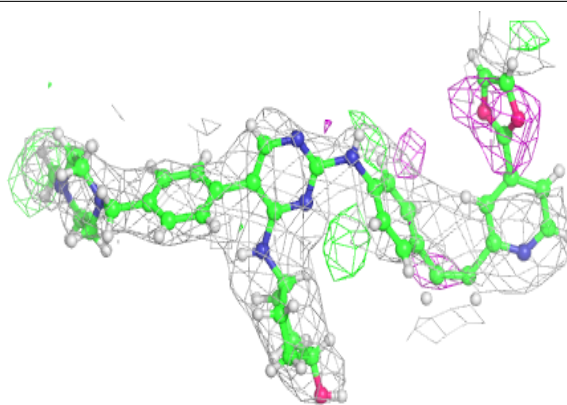
In the following table, the Atoms column lists the number of modelled atoms in the group and the number defined in the chemical component dictionary. The B-factors column lists the minimum, median, 95<sup>th</sup> percentile and maximum values of B factors of atoms in the group. The column labelled 'Q< 0.9' lists the number of atoms with occupancy less than 0.9.

Mol	Type	Chain	Res	Atoms	RSCC	RSR	B-factors(Å <sup>2</sup> )	Q<0.9
3	9VS	B	904	48/48	0.82	0.37	23,53,93,105	0
3	9VS	A	904	48/48	0.83	0.30	29,62,93,111	0
4	MG	B	903	1/1	0.92	0.20	31,31,31,31	0
2	CL	A	902	1/1	0.95	0.18	43,43,43,43	0
2	CL	B	902	1/1	0.96	0.09	44,44,44,44	0
2	CL	A	901	1/1	0.97	0.20	40,40,40,40	0
2	CL	A	903	1/1	0.98	0.16	34,34,34,34	0
2	CL	B	901	1/1	0.98	0.12	25,25,25,25	0

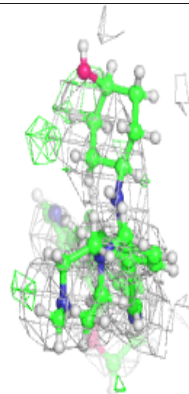
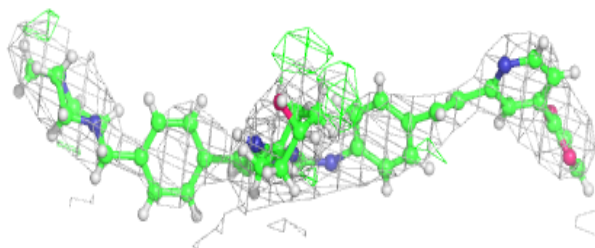
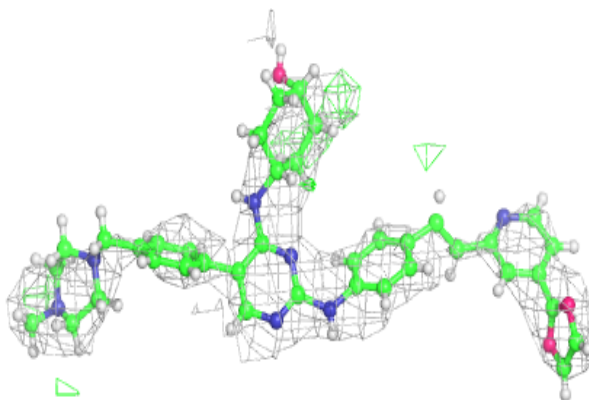
The following is a graphical depiction of the model fit to experimental electron density of all instances of the Ligand of Interest. In addition, ligands with molecular weight > 250 and outliers as shown on the geometry validation Tables will also be included. Each fit is shown from different orientation to approximate a three-dimensional view.

**Electron density around 9VS B 904:**

$2mF_o-DF_c$  (at 0.7 rmsd) in gray  
 $mF_o-DF_c$  (at 3 rmsd) in purple (negative)  
and green (positive)

**Electron density around 9VS A 904:**

$2mF_o-DF_c$  (at 0.7 rmsd) in gray  
 $mF_o-DF_c$  (at 3 rmsd) in purple (negative)  
and green (positive)



## 6.5 Other polymers

There are no such residues in this entry.