



wwPDB X-ray Structure Validation Summary Report ⓘ

Aug 28, 2023 – 04:37 AM EDT

PDB ID : 3LMY
Title : The Crystal Structure of beta-hexosaminidase B in complex with
Pyrimethamine
Authors : Bateman, K.S.; Cherney, M.M.; Withers, S.G.; Mahuran, D.J.; Tropak, M.;
James, M.N.G.
Deposited on : 2010-02-01
Resolution : 2.80 Å(reported)

This is a wwPDB X-ray Structure Validation Summary Report for a publicly released PDB entry.

We welcome your comments at validation@mail.wwpdb.org

A user guide is available at

<https://www.wwpdb.org/validation/2017/XrayValidationReportHelp>

with specific help available everywhere you see the ⓘ symbol.

The types of validation reports are described at

<http://www.wwpdb.org/validation/2017/FAQs#types>.

The following versions of software and data (see [references ⓘ](#)) were used in the production of this report:

MolProbity : 4.02b-467
Mogul : 1.8.5 (274361), CSD as541be (2020)
Xtriage (Phenix) : 1.13
EDS : 2.35
Percentile statistics : 20191225.v01 (using entries in the PDB archive December 25th 2019)
Refmac : 5.8.0158
CCP4 : 7.0.044 (Gargrove)
Ideal geometry (proteins) : Engh & Huber (2001)
Ideal geometry (DNA, RNA) : Parkinson et al. (1996)
Validation Pipeline (wwPDB-VP) : 2.35

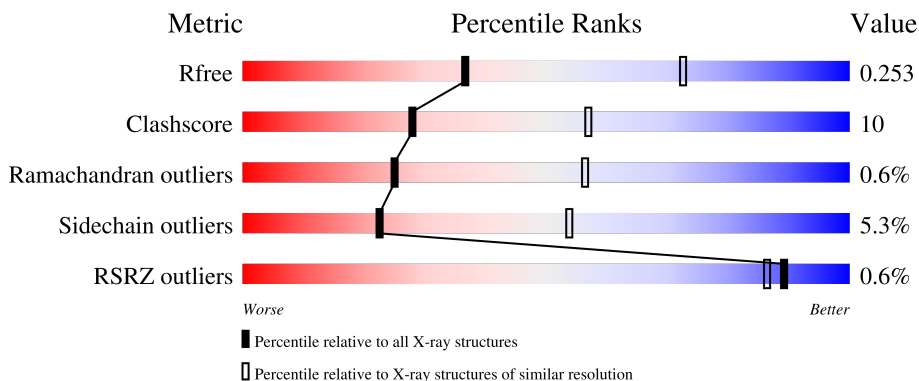
1 Overall quality at a glance i

The following experimental techniques were used to determine the structure:

X-RAY DIFFRACTION

The reported resolution of this entry is 2.80 Å.

Percentile scores (ranging between 0-100) for global validation metrics of the entry are shown in the following graphic. The table shows the number of entries on which the scores are based.



Metric	Whole archive (#Entries)	Similar resolution (#Entries, resolution range(Å))
R_{free}	130704	3140 (2.80-2.80)
Clashscore	141614	3569 (2.80-2.80)
Ramachandran outliers	138981	3498 (2.80-2.80)
Sidechain outliers	138945	3500 (2.80-2.80)
RSRZ outliers	127900	3078 (2.80-2.80)

The table below summarises the geometric issues observed across the polymeric chains and their fit to the electron density. The red, orange, yellow and green segments of the lower bar indicate the fraction of residues that contain outliers for ≥ 3 , 2, 1 and 0 types of geometric quality criteria respectively. A grey segment represents the fraction of residues that are not modelled. The numeric value for each fraction is indicated below the corresponding segment, with a dot representing fractions $\leq 5\%$. The upper red bar (where present) indicates the fraction of residues that have poor fit to the electron density. The numeric value is given above the bar.

Mol	Chain	Length	Quality of chain
1	A	556	 67% 17% 14%
1	B	556	 63% 22% 14%
2	C	3	 100%
3	D	2	 50% 50%

The following table lists non-polymeric compounds, carbohydrate monomers and non-standard

residues in protein, DNA, RNA chains that are outliers for geometric or electron-density-fit criteria:

Mol	Type	Chain	Res	Chirality	Geometry	Clashes	Electron density
5	NAG	A	561	-	-	-	X
6	CP6	A	562	-	-	X	-
6	CP6	B	563	-	-	X	-

2 Entry composition [i](#)

There are 8 unique types of molecules in this entry. The entry contains 8004 atoms, of which 0 are hydrogens and 0 are deuteriums.

In the tables below, the ZeroOcc column contains the number of atoms modelled with zero occupancy, the AltConf column contains the number of residues with at least one atom in alternate conformation and the Trace column contains the number of residues modelled with at most 2 atoms.

- Molecule 1 is a protein called Beta-hexosaminidase subunit beta.

Mol	Chain	Residues	Atoms					ZeroOcc	AltConf	Trace
			Total	C	N	O	S			
1	A	479	3873	2503	642	715	13	0	0	0
1	B	480	3877	2505	643	716	13	0	0	0

- Molecule 2 is an oligosaccharide called beta-D-mannopyranose-(1-4)-2-acetamido-2-deoxy-beta-D-glucopyranose-(1-4)-2-acetamido-2-deoxy-beta-D-glucopyranose.



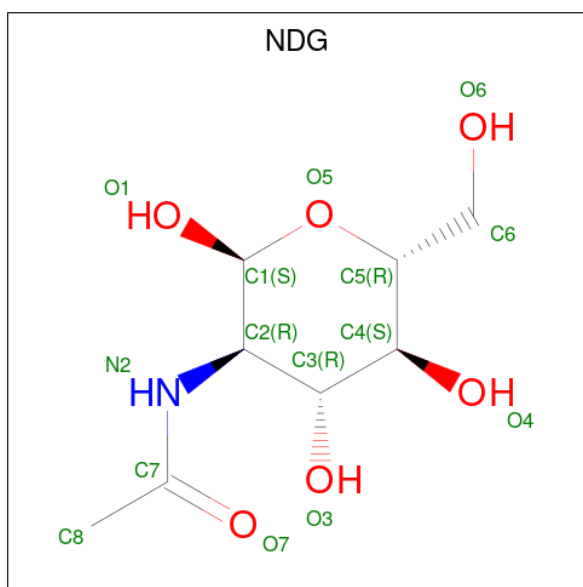
Mol	Chain	Residues	Atoms				ZeroOcc	AltConf	Trace
			Total	C	N	O			
2	C	3	39	22	2	15	0	0	0

- Molecule 3 is an oligosaccharide called 2-acetamido-2-deoxy-beta-D-glucopyranose-(1-4)-2-acetamido-2-deoxy-beta-D-glucopyranose.



Mol	Chain	Residues	Atoms				ZeroOcc	AltConf	Trace
			Total	C	N	O			
3	D	2	28	16	2	10	0	0	0

- Molecule 4 is 2-acetamido-2-deoxy-alpha-D-glucopyranose (three-letter code: NDG) (formula: C₈H₁₅NO₆).



Mol	Chain	Residues	Atoms				ZeroOcc	AltConf
			Total	C	N	O		
4	A	1	14	8	1	5	0	0
4	B	1	14	8	1	5	0	0

- Molecule 5 is 2-acetamido-2-deoxy-beta-D-glucopyranose (three-letter code: NAG) (formula: $C_8H_{15}NO_6$).



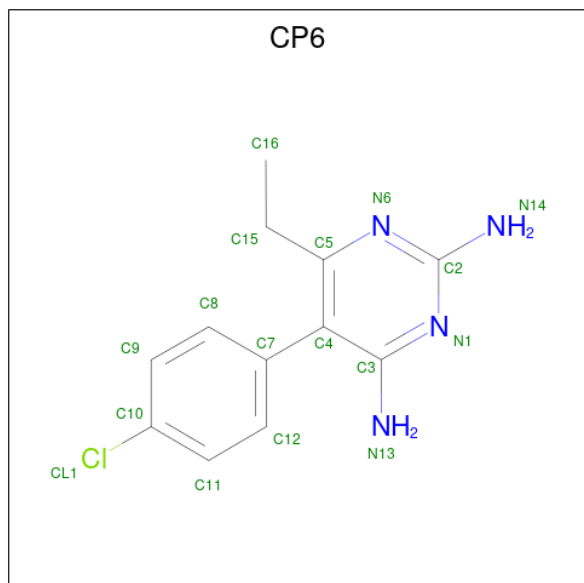
Mol	Chain	Residues	Atoms				ZeroOcc	AltConf
			Total	C	N	O		
5	A	1	14	8	1	5	0	0

Continued on next page...

Continued from previous page...

Mol	Chain	Residues	Atoms				ZeroOcc	AltConf
5	B	1	Total	C	N	O	0	0
			14	8	1	5		
5	B	1	Total	C	N	O	0	0
			14	8	1	5		

- Molecule 6 is 5-(4-CHLORO-PHENYL)-6-ETHYL-PYRIMIDINE-2,4-DIAMINE (three-letter code: CP6) (formula: C₁₂H₁₃ClN₄).



Mol	Chain	Residues	Atoms				ZeroOcc	AltConf
6	A	1	Total	C	Cl	N	0	0
			17	12	1	4		
6	B	1	Total	C	Cl	N	0	0
			17	12	1	4		

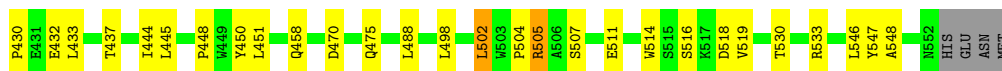
- Molecule 7 is SULFATE ION (three-letter code: SO4) (formula: O₄S).



Mol	Chain	Residues	Atoms		ZeroOcc	AltConf
7	B	1	Total	O S	0	0
			5	4 1		

- Molecule 8 is water.

Mol	Chain	Residues	Atoms		ZeroOcc	AltConf
8	A	43	Total	O	0	0
			43	43		
8	B	35	Total	O	0	0
			35	35		



- Molecule 2: beta-D-mannopyranose-(1-4)-2-acetamido-2-deoxy-beta-D-glucopyranose-(1-4)-2-acetamido-2-deoxy-beta-D-glucopyranose

Chain C:  100%

MAG1
MAG2
BMA3

- Molecule 3: 2-acetamido-2-deoxy-beta-D-glucopyranose-(1-4)-2-acetamido-2-deoxy-beta-D-glucopyranose

Chain D:  50% 50%

MAG1
MAG2

4 Data and refinement statistics

Property	Value	Source
Space group	P 61 2 2	Depositor
Cell constants a, b, c, α , β , γ	113.90Å 113.90Å 397.43Å 90.00° 90.00° 120.00°	Depositor
Resolution (Å)	35.90 – 2.80 35.89 – 2.80	Depositor EDS
% Data completeness (in resolution range)	92.2 (35.90-2.80) 92.2 (35.89-2.80)	Depositor EDS
R_{merge}	0.17	Depositor
R_{sym}	(Not available)	Depositor
$\langle I/\sigma(I) \rangle$ ¹	2.93 (at 2.81Å)	Xtrriage
Refinement program	REFMAC 5.5.0055	Depositor
R, R_{free}	0.194 , 0.252 0.204 , 0.253	Depositor DCC
R_{free} test set	1801 reflections (5.04%)	wwPDB-VP
Wilson B-factor (Å ²)	54.4	Xtrriage
Anisotropy	0.552	Xtrriage
Bulk solvent k_{sol} (e/Å ³), B_{sol} (Å ²)	0.32 , 48.7	EDS
L-test for twinning ²	$\langle L \rangle = 0.50$, $\langle L^2 \rangle = 0.34$	Xtrriage
Estimated twinning fraction	No twinning to report.	Xtrriage
F_o, F_c correlation	0.94	EDS
Total number of atoms	8004	wwPDB-VP
Average B, all atoms (Å ²)	54.0	wwPDB-VP

Xtrriage's analysis on translational NCS is as follows: *The largest off-origin peak in the Patterson function is 3.41% of the height of the origin peak. No significant pseudotranslation is detected.*

¹Intensities estimated from amplitudes.

²Theoretical values of $\langle |L| \rangle$, $\langle L^2 \rangle$ for acentric reflections are 0.5, 0.333 respectively for untwinned datasets, and 0.375, 0.2 for perfectly twinned datasets.

5 Model quality [i](#)

5.1 Standard geometry [i](#)

Bond lengths and bond angles in the following residue types are not validated in this section: SO4, CP6, NAG, NDG, BMA

The Z score for a bond length (or angle) is the number of standard deviations the observed value is removed from the expected value. A bond length (or angle) with $|Z| > 5$ is considered an outlier worth inspection. RMSZ is the root-mean-square of all Z scores of the bond lengths (or angles).

Mol	Chain	Bond lengths		Bond angles	
		RMSZ	# $ Z > 5$	RMSZ	# $ Z > 5$
1	A	0.86	2/3984 (0.1%)	0.88	5/5418 (0.1%)
1	B	0.79	0/3988	0.86	4/5423 (0.1%)
All	All	0.83	2/7972 (0.0%)	0.87	9/10841 (0.1%)

All (2) bond length outliers are listed below:

Mol	Chain	Res	Type	Atoms	Z	Observed(Å)	Ideal(Å)
1	A	75	GLU	CG-CD	5.58	1.60	1.51
1	A	487	CYS	CB-SG	-5.09	1.73	1.81

The worst 5 of 9 bond angle outliers are listed below:

Mol	Chain	Res	Type	Atoms	Z	Observed(°)	Ideal(°)
1	A	505	ARG	NE-CZ-NH2	-5.74	117.43	120.30
1	A	137	CYS	CB-CA-C	-5.67	99.06	110.40
1	B	137	CYS	CB-CA-C	-5.64	99.12	110.40
1	B	505	ARG	NE-CZ-NH2	-5.47	117.56	120.30
1	A	284	ARG	NE-CZ-NH1	5.27	122.94	120.30

There are no chirality outliers.

There are no planarity outliers.

5.2 Too-close contacts [i](#)

In the following table, the Non-H and H(model) columns list the number of non-hydrogen atoms and hydrogen atoms in the chain respectively. The H(added) column lists the number of hydrogen atoms added and optimized by MolProbity. The Clashes column lists the number of clashes within the asymmetric unit, whereas Symm-Clashes lists symmetry-related clashes.

Mol	Chain	Non-H	H(model)	H(added)	Clashes	Symm-Clashes
1	A	3873	0	3778	61	0
1	B	3877	0	3780	88	0
2	C	39	0	34	4	0
3	D	28	0	25	2	0
4	A	14	0	12	0	0
4	B	14	0	12	0	0
5	A	14	0	13	0	0
5	B	28	0	26	0	0
6	A	17	0	13	8	0
6	B	17	0	13	7	0
7	B	5	0	0	0	0
8	A	43	0	0	1	0
8	B	35	0	0	2	0
All	All	8004	0	7706	155	0

The all-atom clashscore is defined as the number of clashes found per 1000 atoms (including hydrogen atoms). The all-atom clashscore for this structure is 10.

The worst 5 of 155 close contacts within the same asymmetric unit are listed below, sorted by their clash magnitude.

Atom-1	Atom-2	Interatomic distance (Å)	Clash overlap (Å)
1:B:450:TYR:CE2	6:B:563:CP6:H9	2.01	0.95
1:B:450:TYR:CD2	6:B:563:CP6:H9	2.06	0.91
1:B:351:LEU:HD13	1:B:391:VAL:HG12	1.55	0.84
6:A:562:CP6:H132	6:A:562:CP6:H8	1.40	0.83
6:A:562:CP6:H132	6:A:562:CP6:C8	1.96	0.79

There are no symmetry-related clashes.

5.3 Torsion angles [i](#)

5.3.1 Protein backbone [i](#)

In the following table, the Percentiles column shows the percent Ramachandran outliers of the chain as a percentile score with respect to all X-ray entries followed by that with respect to entries of similar resolution.

The Analysed column shows the number of residues for which the backbone conformation was analysed, and the total number of residues.

Mol	Chain	Analysed	Favoured	Allowed	Outliers	Percentiles	
1	A	473/556 (85%)	448 (95%)	23 (5%)	2 (0%)	34	66
1	B	474/556 (85%)	436 (92%)	34 (7%)	4 (1%)	19	49
All	All	947/1112 (85%)	884 (93%)	57 (6%)	6 (1%)	25	56

5 of 6 Ramachandran outliers are listed below:

Mol	Chain	Res	Type
1	A	517	LYS
1	A	165	VAL
1	B	470	ASP
1	B	216	VAL
1	B	331	SER

5.3.2 Protein sidechains [i](#)

In the following table, the Percentiles column shows the percent sidechain outliers of the chain as a percentile score with respect to all X-ray entries followed by that with respect to entries of similar resolution.

The Analysed column shows the number of residues for which the sidechain conformation was analysed, and the total number of residues.

Mol	Chain	Analysed	Rotameric	Outliers	Percentiles	
1	A	426/486 (88%)	405 (95%)	21 (5%)	25	57
1	B	426/486 (88%)	402 (94%)	24 (6%)	21	51
All	All	852/972 (88%)	807 (95%)	45 (5%)	22	54

5 of 45 residues with a non-rotameric sidechain are listed below:

Mol	Chain	Res	Type
1	B	165	VAL
1	B	318	SER
1	B	183	SER
1	B	262	LEU
1	B	385	SER

Sometimes sidechains can be flipped to improve hydrogen bonding and reduce clashes. 5 of 7 such sidechains are listed below:

Mol	Chain	Res	Type
1	B	68	ASN

Continued on next page...

Continued from previous page...

Mol	Chain	Res	Type
1	B	123	GLN
1	B	126	GLN
1	B	125	GLN
1	A	389	GLN

5.3.3 RNA [i](#)

There are no RNA molecules in this entry.

5.4 Non-standard residues in protein, DNA, RNA chains [i](#)

There are no non-standard protein/DNA/RNA residues in this entry.

5.5 Carbohydrates [i](#)

5 monosaccharides are modelled in this entry.

In the following table, the Counts columns list the number of bonds (or angles) for which Mogul statistics could be retrieved, the number of bonds (or angles) that are observed in the model and the number of bonds (or angles) that are defined in the Chemical Component Dictionary. The Link column lists molecule types, if any, to which the group is linked. The Z score for a bond length (or angle) is the number of standard deviations the observed value is removed from the expected value. A bond length (or angle) with $|Z| > 2$ is considered an outlier worth inspection. RMSZ is the root-mean-square of all Z scores of the bond lengths (or angles).

Mol	Type	Chain	Res	Link	Bond lengths			Bond angles		
					Counts	RMSZ	# Z > 2	Counts	RMSZ	# Z > 2
2	NAG	C	1	1,2	14,14,15	0.83	1 (7%)	17,19,21	1.70	5 (29%)
2	NAG	C	2	2	14,14,15	0.72	0	17,19,21	2.36	5 (29%)
2	BMA	C	3	2	11,11,12	1.32	2 (18%)	15,15,17	1.77	4 (26%)
3	NAG	D	1	3,1	14,14,15	0.80	1 (7%)	17,19,21	1.05	0
3	NAG	D	2	3	14,14,15	0.97	1 (7%)	17,19,21	1.63	5 (29%)

In the following table, the Chirals column lists the number of chiral outliers, the number of chiral centers analysed, the number of these observed in the model and the number defined in the Chemical Component Dictionary. Similar counts are reported in the Torsion and Rings columns. '-' means no outliers of that kind were identified.

Mol	Type	Chain	Res	Link	Chirals	Torsions	Rings
2	NAG	C	1	1,2	-	0/6/23/26	0/1/1/1

Continued on next page...

Continued from previous page...

Mol	Type	Chain	Res	Link	Chirals	Torsions	Rings
2	NAG	C	2	2	-	1/6/23/26	0/1/1/1
2	BMA	C	3	2	-	1/2/19/22	0/1/1/1
3	NAG	D	1	3,1	-	2/6/23/26	0/1/1/1
3	NAG	D	2	3	-	1/6/23/26	0/1/1/1

All (5) bond length outliers are listed below:

Mol	Chain	Res	Type	Atoms	Z	Observed(Å)	Ideal(Å)
2	C	3	BMA	C2-C3	2.46	1.56	1.52
2	C	1	NAG	O5-C1	-2.22	1.40	1.43
3	D	2	NAG	C1-C2	2.12	1.55	1.52
3	D	1	NAG	O5-C1	-2.04	1.40	1.43
2	C	3	BMA	C4-C5	2.01	1.57	1.53

The worst 5 of 19 bond angle outliers are listed below:

Mol	Chain	Res	Type	Atoms	Z	Observed(°)	Ideal(°)
2	C	2	NAG	O5-C1-C2	-6.42	101.15	111.29
2	C	3	BMA	C3-C4-C5	3.92	117.24	110.24
2	C	1	NAG	C3-C4-C5	-3.82	103.42	110.24
2	C	2	NAG	C2-N2-C7	3.81	128.33	122.90
2	C	2	NAG	C1-O5-C5	3.45	116.86	112.19

There are no chirality outliers.

All (5) torsion outliers are listed below:

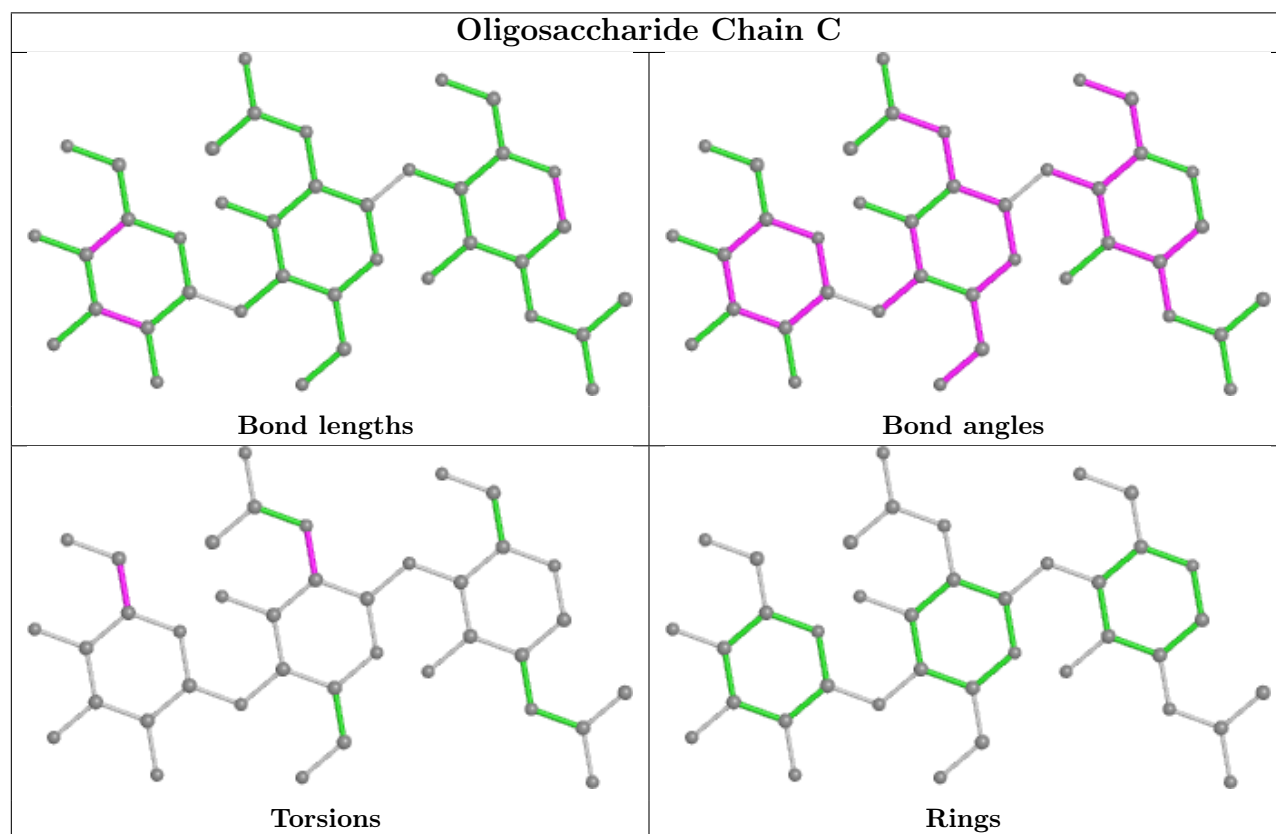
Mol	Chain	Res	Type	Atoms
3	D	1	NAG	C4-C5-C6-O6
3	D	1	NAG	O5-C5-C6-O6
2	C	3	BMA	C4-C5-C6-O6
2	C	2	NAG	C3-C2-N2-C7
3	D	2	NAG	C3-C2-N2-C7

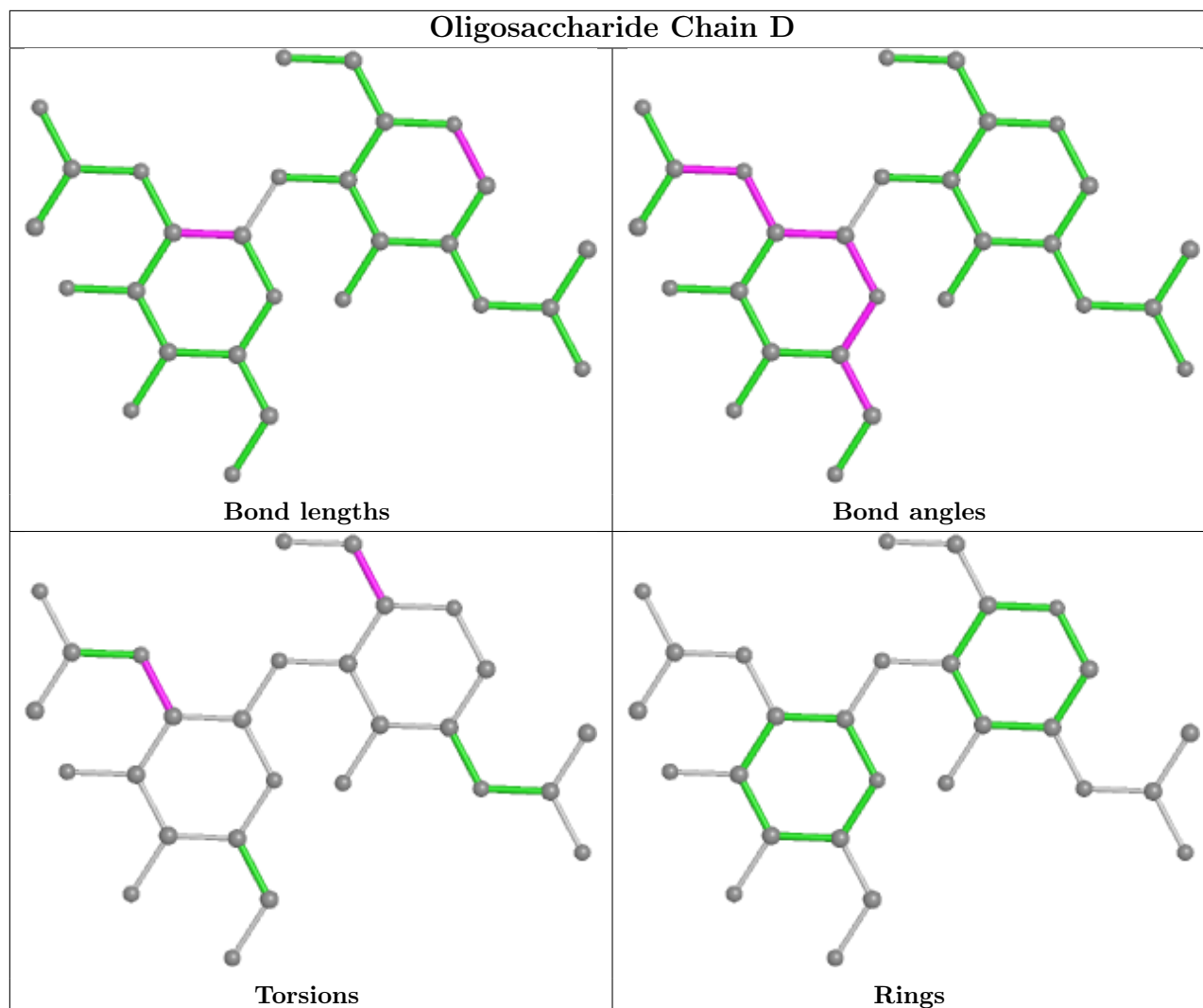
There are no ring outliers.

4 monomers are involved in 6 short contacts:

Mol	Chain	Res	Type	Clashes	Symm-Clashes
2	C	2	NAG	1	0
2	C	1	NAG	3	0
2	C	3	BMA	1	0
3	D	1	NAG	2	0

The following is a two-dimensional graphical depiction of Mogul quality analysis of bond lengths, bond angles, torsion angles, and ring geometry for oligosaccharide.





5.6 Ligand geometry [i](#)

8 ligands are modelled in this entry.

In the following table, the Counts columns list the number of bonds (or angles) for which Mogul statistics could be retrieved, the number of bonds (or angles) that are observed in the model and the number of bonds (or angles) that are defined in the Chemical Component Dictionary. The Link column lists molecule types, if any, to which the group is linked. The Z score for a bond length (or angle) is the number of standard deviations the observed value is removed from the expected value. A bond length (or angle) with $|Z| > 2$ is considered an outlier worth inspection. RMSZ is the root-mean-square of all Z scores of the bond lengths (or angles).

Mol	Type	Chain	Res	Link	Bond lengths			Bond angles		
					Counts	RMSZ	# Z > 2	Counts	RMSZ	# Z > 2
6	CP6	A	562	-	17,18,18	1.77	5 (29%)	21,25,25	3.02	6 (28%)
5	NAG	B	559	1	14,14,15	1.33	1 (7%)	17,19,21	2.48	4 (23%)
4	NDG	A	560	-	14,14,15	1.27	2 (14%)	17,19,21	2.23	5 (29%)

Mol	Type	Chain	Res	Link	Bond lengths			Bond angles		
					Counts	RMSZ	# Z > 2	Counts	RMSZ	# Z > 2
7	SO4	B	562	-	4,4,4	0.13	0	6,6,6	0.53	0
5	NAG	B	560	1	14,14,15	0.71	0	17,19,21	2.39	7 (41%)
4	NDG	B	561	-	14,14,15	1.33	1 (7%)	17,19,21	1.87	4 (23%)
5	NAG	A	561	1	14,14,15	1.35	2 (14%)	17,19,21	3.15	8 (47%)
6	CP6	B	563	-	17,18,18	1.95	4 (23%)	21,25,25	3.10	9 (42%)

In the following table, the Chirals column lists the number of chiral outliers, the number of chiral centers analysed, the number of these observed in the model and the number defined in the Chemical Component Dictionary. Similar counts are reported in the Torsion and Rings columns. '-' means no outliers of that kind were identified.

Mol	Type	Chain	Res	Link	Chirals	Torsions	Rings
6	CP6	A	562	-	-	2/2/6/6	0/2/2/2
5	NAG	B	559	1	-	2/6/23/26	0/1/1/1
4	NDG	A	560	-	-	0/6/23/26	0/1/1/1
5	NAG	B	560	1	-	1/6/23/26	0/1/1/1
4	NDG	B	561	-	-	2/6/23/26	0/1/1/1
5	NAG	A	561	1	-	2/6/23/26	0/1/1/1
6	CP6	B	563	-	-	1/2/6/6	0/2/2/2

The worst 5 of 15 bond length outliers are listed below:

Mol	Chain	Res	Type	Atoms	Z	Observed(Å)	Ideal(Å)
6	B	563	CP6	C10-CL1	4.72	1.84	1.74
6	B	563	CP6	C5-N6	3.77	1.36	1.32
6	A	562	CP6	C5-N6	3.73	1.36	1.32
4	B	561	NDG	C1-C2	3.39	1.57	1.52
6	A	562	CP6	C10-CL1	3.35	1.81	1.74

The worst 5 of 43 bond angle outliers are listed below:

Mol	Chain	Res	Type	Atoms	Z	Observed(°)	Ideal(°)
6	A	562	CP6	C2-N6-C5	8.90	123.66	116.24
6	B	563	CP6	C4-C5-N6	-8.08	116.57	122.44
6	B	563	CP6	C2-N6-C5	7.11	122.17	116.24
5	A	561	NAG	C2-N2-C7	6.67	132.40	122.90
6	A	562	CP6	C4-C5-N6	-6.33	117.84	122.44

There are no chirality outliers.

5 of 10 torsion outliers are listed below:

Mol	Chain	Res	Type	Atoms
6	A	562	CP6	C16-C15-C5-C4
6	B	563	CP6	C16-C15-C5-C4
5	B	559	NAG	C4-C5-C6-O6
5	A	561	NAG	O5-C5-C6-O6
5	B	559	NAG	O5-C5-C6-O6

There are no ring outliers.

2 monomers are involved in 15 short contacts:

Mol	Chain	Res	Type	Clashes	Symm-Clashes
6	A	562	CP6	8	0
6	B	563	CP6	7	0

5.7 Other polymers [i](#)

There are no such residues in this entry.

5.8 Polymer linkage issues [i](#)

There are no chain breaks in this entry.

6 Fit of model and data [i](#)

6.1 Protein, DNA and RNA chains [i](#)

In the following table, the column labelled '#RSRZ > 2' contains the number (and percentage) of RSRZ outliers, followed by percent RSRZ outliers for the chain as percentile scores relative to all X-ray entries and entries of similar resolution. The OWAB column contains the minimum, median, 95th percentile and maximum values of the occupancy-weighted average B-factor per residue. The column labelled 'Q < 0.9' lists the number of (and percentage) of residues with an average occupancy less than 0.9.

Mol	Chain	Analysed	<RSRZ>	#RSRZ>2	OWAB(Å ²)	Q<0.9
1	A	479/556 (86%)	-0.46	3 (0%) 89 86	36, 50, 77, 92	0
1	B	480/556 (86%)	-0.40	3 (0%) 89 86	38, 54, 74, 88	0
All	All	959/1112 (86%)	-0.43	6 (0%) 89 86	36, 52, 75, 92	0

The worst 5 of 6 RSRZ outliers are listed below:

Mol	Chain	Res	Type	RSRZ
1	B	317	ASP	4.9
1	A	311	SER	4.6
1	B	311	SER	3.7
1	A	317	ASP	3.3
1	A	122	THR	2.9

6.2 Non-standard residues in protein, DNA, RNA chains [i](#)

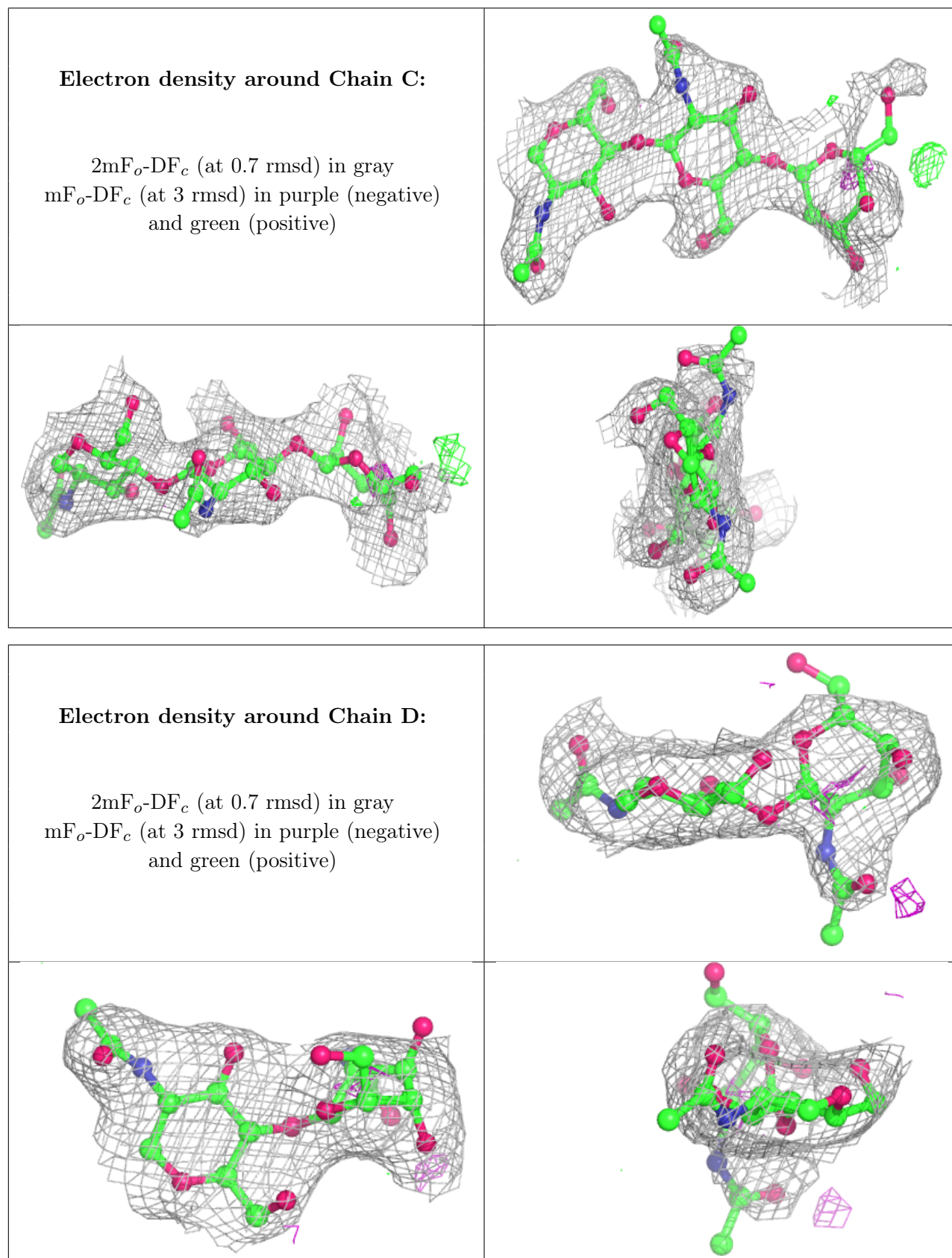
There are no non-standard protein/DNA/RNA residues in this entry.

6.3 Carbohydrates [i](#)

In the following table, the Atoms column lists the number of modelled atoms in the group and the number defined in the chemical component dictionary. The B-factors column lists the minimum, median, 95th percentile and maximum values of B factors of atoms in the group. The column labelled 'Q < 0.9' lists the number of atoms with occupancy less than 0.9.

Mol	Type	Chain	Res	Atoms	RSCC	RSR	B-factors(Å ²)	Q<0.9
2	BMA	C	3	11/12	0.55	0.39	100,104,105,106	0
3	NAG	D	2	14/15	0.82	0.49	91,95,99,99	0
3	NAG	D	1	14/15	0.91	0.24	63,72,75,83	0
2	NAG	C	2	14/15	0.92	0.34	77,83,88,95	0
2	NAG	C	1	14/15	0.96	0.23	49,55,59,68	0

The following is a graphical depiction of the model fit to experimental electron density for oligosaccharide. Each fit is shown from different orientation to approximate a three-dimensional view.



6.4 Ligands [i](#)

In the following table, the Atoms column lists the number of modelled atoms in the group and the number defined in the chemical component dictionary. The B-factors column lists the minimum, median, 95th percentile and maximum values of B factors of atoms in the group. The column labelled 'Q< 0.9' lists the number of atoms with occupancy less than 0.9.

Mol	Type	Chain	Res	Atoms	RSCC	RSR	B-factors(Å ²)	Q<0.9
5	NAG	A	561	14/15	0.66	0.50	91,99,100,101	0
5	NAG	B	559	14/15	0.78	0.36	75,85,90,91	0
4	NDG	A	560	14/15	0.81	0.32	81,89,91,91	0
6	CP6	B	563	17/17	0.81	0.25	51,62,81,86	0
4	NDG	B	561	14/15	0.82	0.45	89,95,103,104	0
6	CP6	A	562	17/17	0.85	0.24	68,75,97,102	0
5	NAG	B	560	14/15	0.88	0.32	78,83,88,90	0
7	SO4	B	562	5/5	0.97	0.09	69,71,72,74	0

6.5 Other polymers [i](#)

There are no such residues in this entry.