



wwPDB X-ray Structure Validation Summary Report ⓘ

Nov 16, 2023 – 02:28 AM JST

PDB ID : 6KKA
Title : Xylanase J mutant from Bacillus sp. 41M-1
Authors : Suzuki, M.; Takita, T.; Nakatani, K.
Deposited on : 2019-07-24
Resolution : 2.36 Å(reported)

This is a wwPDB X-ray Structure Validation Summary Report for a publicly released PDB entry.

We welcome your comments at validation@mail.wwpdb.org

A user guide is available at

<https://www.wwpdb.org/validation/2017/XrayValidationReportHelp>

with specific help available everywhere you see the ⓘ symbol.

The types of validation reports are described at

<http://www.wwpdb.org/validation/2017/FAQs#types>.

The following versions of software and data (see [references ⓘ](#)) were used in the production of this report:

MolProbity : 4.02b-467
Mogul : 1.8.5 (274361), CSD as541be (2020)
Xtriage (Phenix) : 1.13
EDS : 2.36
Percentile statistics : 20191225.v01 (using entries in the PDB archive December 25th 2019)
Refmac : 5.8.0158
CCP4 : 7.0.044 (Gargrove)
Ideal geometry (proteins) : Engh & Huber (2001)
Ideal geometry (DNA, RNA) : Parkinson et al. (1996)
Validation Pipeline (wwPDB-VP) : 2.36

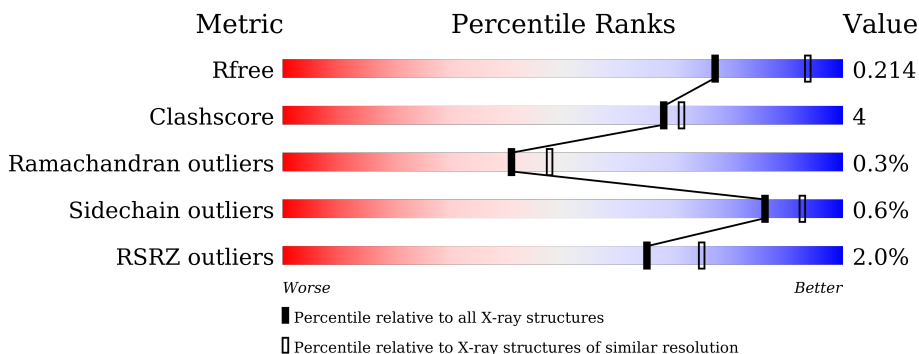
1 Overall quality at a glance

The following experimental techniques were used to determine the structure:

X-RAY DIFFRACTION

The reported resolution of this entry is 2.36 Å.

Percentile scores (ranging between 0-100) for global validation metrics of the entry are shown in the following graphic. The table shows the number of entries on which the scores are based.



Metric	Whole archive (#Entries)	Similar resolution (#Entries, resolution range(Å))
R_{free}	130704	1164 (2.36-2.36)
Clashscore	141614	1232 (2.36-2.36)
Ramachandran outliers	138981	1211 (2.36-2.36)
Sidechain outliers	138945	1212 (2.36-2.36)
RSRZ outliers	127900	1150 (2.36-2.36)

The table below summarises the geometric issues observed across the polymeric chains and their fit to the electron density. The red, orange, yellow and green segments of the lower bar indicate the fraction of residues that contain outliers for ≥ 3 , 2, 1 and 0 types of geometric quality criteria respectively. A grey segment represents the fraction of residues that are not modelled. The numeric value for each fraction is indicated below the corresponding segment, with a dot representing fractions $\leq 5\%$. The upper red bar (where present) indicates the fraction of residues that have poor fit to the electron density. The numeric value is given above the bar.

Mol	Chain	Length	Quality of chain
1	A	327	
1	B	327	

2 Entry composition [i](#)

There are 7 unique types of molecules in this entry. The entry contains 5498 atoms, of which 0 are hydrogens and 0 are deuteriums.

In the tables below, the ZeroOcc column contains the number of atoms modelled with zero occupancy, the AltConf column contains the number of residues with at least one atom in alternate conformation and the Trace column contains the number of residues modelled with at most 2 atoms.

- Molecule 1 is a protein called Endo-1,4-beta-xylanase.

Mol	Chain	Residues	Atoms					ZeroOcc	AltConf	Trace
			Total	C	N	O	S			
1	A	327	2563	1597	439	520	7	0	4	0
1	B	327	2568	1599	443	519	7	0	4	0

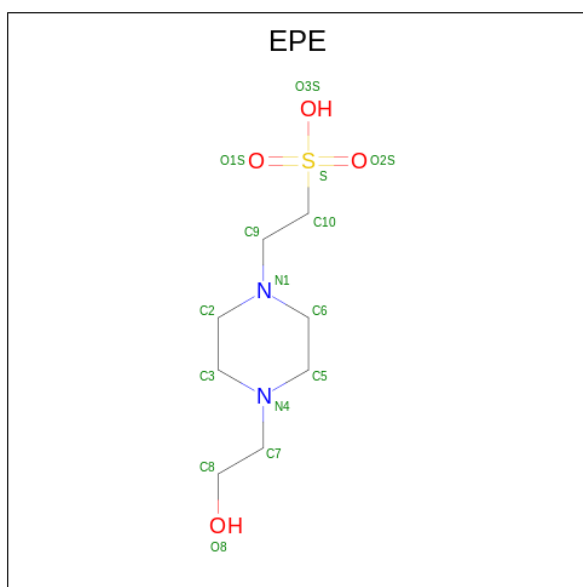
There are 2 discrepancies between the modelled and reference sequences:

Chain	Residue	Modelled	Actual	Comment	Reference
A	82	ALA	THR	engineered mutation	UNP Q9RC94
B	82	ALA	THR	engineered mutation	UNP Q9RC94

- Molecule 2 is CALCIUM ION (three-letter code: CA) (formula: Ca).

Mol	Chain	Residues	Atoms		ZeroOcc	AltConf
2	A	4	Total	Ca	0	0
			4	4		
2	B	3	Total	Ca	0	0
			3	3		

- Molecule 3 is 4-(2-HYDROXYETHYL)-1-PIPERAZINE ETHANESULFONIC ACID (three-letter code: EPE) (formula: C₈H₁₈N₂O₄S).



Mol	Chain	Residues	Atoms					ZeroOcc	AltConf	
			Total	C	N	O	S			
3	A	1	Total	15	8	2	4	1	0	0
3	B	1	Total	15	8	2	4	1	0	0

- Molecule 4 is GLYCEROL (three-letter code: GOL) (formula: $C_3H_8O_3$).



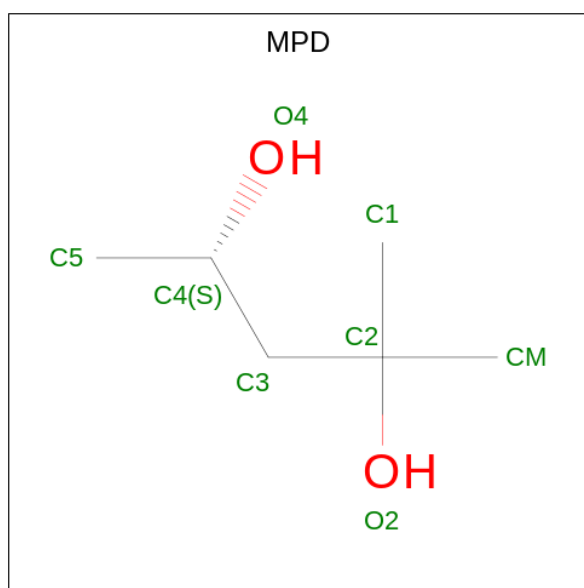
Mol	Chain	Residues	Atoms			ZeroOcc	AltConf	
			Total	C	O			
4	A	1	Total	6	3	3	0	0
4	A	1	Total	6	3	3	0	0

Continued on next page...

Continued from previous page...

Mol	Chain	Residues	Atoms			ZeroOcc	AltConf
4	A	1	Total	C	O	0	0
			6	3	3		
4	A	1	Total	C	O	0	0
			6	3	3		
4	B	1	Total	C	O	0	0
			6	3	3		
4	B	1	Total	C	O	0	0
			6	3	3		
4	B	1	Total	C	O	0	0
			6	3	3		
4	B	1	Total	C	O	0	0
			6	3	3		

- Molecule 5 is (4S)-2-METHYL-2,4-PENTANEDIOL (three-letter code: MPD) (formula: C₆H₁₄O₂).



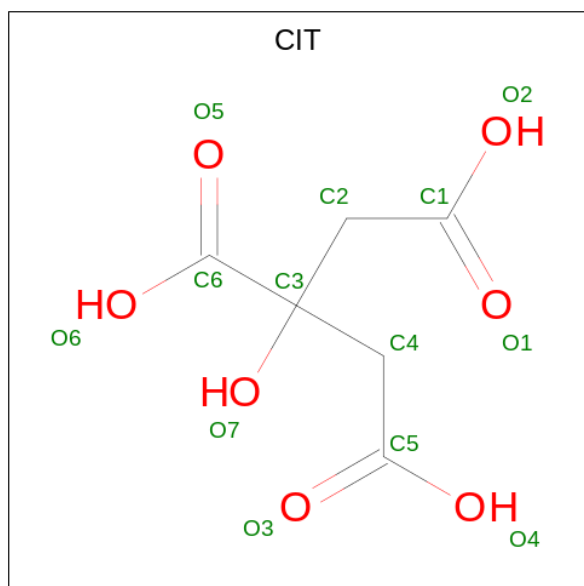
Mol	Chain	Residues	Atoms			ZeroOcc	AltConf
5	A	1	Total	C	O	0	0
			8	6	2		
5	A	1	Total	C	O	0	0
			8	6	2		
5	A	1	Total	C	O	0	0
			8	6	2		
5	B	1	Total	C	O	0	0
			8	6	2		

Continued on next page...

Continued from previous page...

Mol	Chain	Residues	Atoms			ZeroOcc	AltConf
5	B	1	Total	C	O	0	0
			8	6	2		

- Molecule 6 is CITRIC ACID (three-letter code: CIT) (formula: C₆H₈O₇).



Mol	Chain	Residues	Atoms			ZeroOcc	AltConf
6	B	1	Total	C	O	0	0
			13	6	7		

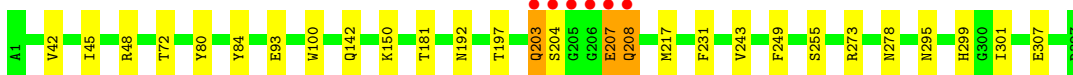
- Molecule 7 is water.

Mol	Chain	Residues	Atoms		ZeroOcc	AltConf
7	A	126	Total	O	0	0
			126	126		
7	B	97	Total	O	0	0
			97	97		

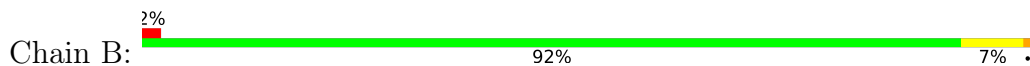
3 Residue-property plots [i](#)

These plots are drawn for all protein, RNA, DNA and oligosaccharide chains in the entry. The first graphic for a chain summarises the proportions of the various outlier classes displayed in the second graphic. The second graphic shows the sequence view annotated by issues in geometry and electron density. Residues are color-coded according to the number of geometric quality criteria for which they contain at least one outlier: green = 0, yellow = 1, orange = 2 and red = 3 or more. A red dot above a residue indicates a poor fit to the electron density ($RSRZ > 2$). Stretches of 2 or more consecutive residues without any outlier are shown as a green connector. Residues present in the sample, but not in the model, are shown in grey.

- Molecule 1: Endo-1,4-beta-xylanase



- Molecule 1: Endo-1,4-beta-xylanase



4 Data and refinement statistics

Property	Value	Source
Space group	P 61 2 2	Depositor
Cell constants a, b, c, α , β , γ	125.44Å 125.44Å 318.15Å 90.00° 90.00° 120.00°	Depositor
Resolution (Å)	49.25 – 2.36 49.25 – 2.36	Depositor EDS
% Data completeness (in resolution range)	100.0 (49.25-2.36) 100.0 (49.25-2.36)	Depositor EDS
R_{merge}	0.07	Depositor
R_{sym}	(Not available)	Depositor
$\langle I/\sigma(I) \rangle$ ¹	4.07 (at 2.37Å)	Xtrriage
Refinement program	PHENIX 1.13_2998	Depositor
R, R_{free}	0.183 , 0.213 0.184 , 0.214	Depositor DCC
R_{free} test set	3030 reflections (4.92%)	wwPDB-VP
Wilson B-factor (Å ²)	45.3	Xtrriage
Anisotropy	0.066	Xtrriage
Bulk solvent k_{sol} (e/Å ³), B_{sol} (Å ²)	0.33 , 34.8	EDS
L-test for twinning ²	$\langle L \rangle = 0.45$, $\langle L^2 \rangle = 0.28$	Xtrriage
Estimated twinning fraction	No twinning to report.	Xtrriage
F_o, F_c correlation	0.95	EDS
Total number of atoms	5498	wwPDB-VP
Average B, all atoms (Å ²)	46.0	wwPDB-VP

Xtrriage's analysis on translational NCS is as follows: *The largest off-origin peak in the Patterson function is 3.02% of the height of the origin peak. No significant pseudotranslation is detected.*

¹Intensities estimated from amplitudes.

²Theoretical values of $\langle |L| \rangle$, $\langle L^2 \rangle$ for acentric reflections are 0.5, 0.333 respectively for untwinned datasets, and 0.375, 0.2 for perfectly twinned datasets.

5 Model quality [i](#)

5.1 Standard geometry [i](#)

Bond lengths and bond angles in the following residue types are not validated in this section: CA, GOL, EPE, CIT, MPD

The Z score for a bond length (or angle) is the number of standard deviations the observed value is removed from the expected value. A bond length (or angle) with $|Z| > 5$ is considered an outlier worth inspection. RMSZ is the root-mean-square of all Z scores of the bond lengths (or angles).

Mol	Chain	Bond lengths		Bond angles	
		RMSZ	# Z >5	RMSZ	# Z >5
1	A	0.44	0/2629	0.65	2/3573 (0.1%)
1	B	0.39	0/2631	0.61	1/3575 (0.0%)
All	All	0.42	0/5260	0.63	3/7148 (0.0%)

Chiral center outliers are detected by calculating the chiral volume of a chiral center and verifying if the center is modelled as a planar moiety or with the opposite hand. A planarity outlier is detected by checking planarity of atoms in a peptide group, atoms in a mainchain group or atoms of a sidechain that are expected to be planar.

Mol	Chain	#Chirality outliers	#Planarity outliers
1	A	0	1
1	B	0	1
All	All	0	2

There are no bond length outliers.

All (3) bond angle outliers are listed below:

Mol	Chain	Res	Type	Atoms	Z	Observed(°)	Ideal(°)
1	A	203	GLN	N-CA-CB	6.05	121.49	110.60
1	A	203	GLN	CA-CB-CG	5.18	124.79	113.40
1	B	205	GLY	N-CA-C	-5.12	100.31	113.10

There are no chirality outliers.

All (2) planarity outliers are listed below:

Mol	Chain	Res	Type	Group
1	A	207	GLU	Peptide
1	B	203	GLN	Peptide

5.2 Too-close contacts [i](#)

In the following table, the Non-H and H(model) columns list the number of non-hydrogen atoms and hydrogen atoms in the chain respectively. The H(added) column lists the number of hydrogen atoms added and optimized by MolProbity. The Clashes column lists the number of clashes within the asymmetric unit, whereas Symm-Clashes lists symmetry-related clashes.

Mol	Chain	Non-H	H(model)	H(added)	Clashes	Symm-Clashes
1	A	2563	0	2374	20	0
1	B	2568	0	2381	16	0
2	A	4	0	0	0	0
2	B	3	0	0	0	0
3	A	15	0	17	1	0
3	B	15	0	17	1	0
4	A	24	0	32	1	0
4	B	30	0	40	0	0
5	A	24	0	42	4	0
5	B	16	0	28	4	0
6	B	13	0	5	1	0
7	A	126	0	0	0	0
7	B	97	0	0	1	0
All	All	5498	0	4936	39	0

The all-atom clashscore is defined as the number of clashes found per 1000 atoms (including hydrogen atoms). The all-atom clashscore for this structure is 4.

The worst 5 of 39 close contacts within the same asymmetric unit are listed below, sorted by their clash magnitude.

Atom-1	Atom-2	Interatomic distance (Å)	Clash overlap (Å)
5:B:412:MPD:HO4	5:B:412:MPD:HO2	1.13	0.92
1:B:87:THR:HG22	1:B:92:VAL:HB	1.58	0.85
1:A:217:MET:HB2	1:A:243:VAL:HG22	1.67	0.76
1:A:207:GLU:O	1:A:208:GLN:HB2	1.86	0.76
1:B:201:GLY:O	1:B:203:GLN:N	2.22	0.72

There are no symmetry-related clashes.

5.3 Torsion angles [i](#)

5.3.1 Protein backbone [i](#)

In the following table, the Percentiles column shows the percent Ramachandran outliers of the chain as a percentile score with respect to all X-ray entries followed by that with respect to entries

of similar resolution.

The Analysed column shows the number of residues for which the backbone conformation was analysed, and the total number of residues.

Mol	Chain	Analysed	Favoured	Allowed	Outliers	Percentiles	
1	A	329/327 (101%)	319 (97%)	9 (3%)	1 (0%)	41	47
1	B	329/327 (101%)	317 (96%)	11 (3%)	1 (0%)	41	47
All	All	658/654 (101%)	636 (97%)	20 (3%)	2 (0%)	41	47

All (2) Ramachandran outliers are listed below:

Mol	Chain	Res	Type
1	A	208	GLN
1	B	202	GLY

5.3.2 Protein sidechains [i](#)

In the following table, the Percentiles column shows the percent sidechain outliers of the chain as a percentile score with respect to all X-ray entries followed by that with respect to entries of similar resolution.

The Analysed column shows the number of residues for which the sidechain conformation was analysed, and the total number of residues.

Mol	Chain	Analysed	Rotameric	Outliers	Percentiles	
1	A	273/269 (102%)	272 (100%)	1 (0%)	91	95
1	B	273/269 (102%)	271 (99%)	2 (1%)	84	91
All	All	546/538 (102%)	543 (100%)	3 (0%)	86	94

All (3) residues with a non-rotameric sidechain are listed below:

Mol	Chain	Res	Type
1	A	231	PHE
1	B	11	ASP
1	B	231	PHE

Sometimes sidechains can be flipped to improve hydrogen bonding and reduce clashes. All (1) such sidechains are listed below:

Mol	Chain	Res	Type
1	B	38	GLN

5.3.3 RNA [i](#)

There are no RNA molecules in this entry.

5.4 Non-standard residues in protein, DNA, RNA chains [i](#)

There are no non-standard protein/DNA/RNA residues in this entry.

5.5 Carbohydrates [i](#)

There are no monosaccharides in this entry.

5.6 Ligand geometry [i](#)

Of 24 ligands modelled in this entry, 7 are monoatomic - leaving 17 for Mogul analysis.

In the following table, the Counts columns list the number of bonds (or angles) for which Mogul statistics could be retrieved, the number of bonds (or angles) that are observed in the model and the number of bonds (or angles) that are defined in the Chemical Component Dictionary. The Link column lists molecule types, if any, to which the group is linked. The Z score for a bond length (or angle) is the number of standard deviations the observed value is removed from the expected value. A bond length (or angle) with $|Z| > 2$ is considered an outlier worth inspection. RMSZ is the root-mean-square of all Z scores of the bond lengths (or angles).

Mol	Type	Chain	Res	Link	Bond lengths			Bond angles		
					Counts	RMSZ	# Z > 2	Counts	RMSZ	# Z > 2
4	GOL	B	408	-	5,5,5	0.86	0	5,5,5	1.08	0
5	MPD	A	411	-	7,7,7	0.33	0	9,10,10	0.35	0
5	MPD	B	412	-	7,7,7	0.26	0	9,10,10	0.76	0
4	GOL	A	406	-	5,5,5	1.10	0	5,5,5	1.06	0
3	EPE	B	404	-	15,15,15	0.80	1 (6%)	18,20,20	1.46	4 (22%)
4	GOL	B	410	-	5,5,5	0.87	0	5,5,5	1.06	0
4	GOL	A	407	-	5,5,5	0.71	0	5,5,5	1.05	0
4	GOL	B	407	-	5,5,5	1.00	0	5,5,5	1.04	0
4	GOL	B	409	-	5,5,5	0.77	0	5,5,5	1.03	0
5	MPD	A	412	-	7,7,7	0.36	0	9,10,10	0.76	0
5	MPD	B	411	-	7,7,7	0.43	0	9,10,10	0.82	0
4	GOL	A	409	-	5,5,5	0.81	0	5,5,5	1.16	0
4	GOL	B	406	-	5,5,5	1.07	0	5,5,5	1.12	0
3	EPE	A	405	-	15,15,15	0.89	1 (6%)	18,20,20	1.84	3 (16%)
6	CIT	B	405	-	12,12,12	1.11	0	17,17,17	1.52	2 (11%)
4	GOL	A	408	-	5,5,5	0.76	0	5,5,5	1.22	0
5	MPD	A	410	-	7,7,7	0.35	0	9,10,10	0.73	0

In the following table, the Chirals column lists the number of chiral outliers, the number of chiral centers analysed, the number of these observed in the model and the number defined in the Chemical Component Dictionary. Similar counts are reported in the Torsion and Rings columns. '-' means no outliers of that kind were identified.

Mol	Type	Chain	Res	Link	Chirals	Torsions	Rings
4	GOL	B	408	-	-	0/4/4/4	-
5	MPD	A	411	-	-	2/5/5/5	-
5	MPD	B	412	-	-	5/5/5/5	-
4	GOL	A	406	-	-	2/4/4/4	-
3	EPE	B	404	-	-	6/9/19/19	0/1/1/1
4	GOL	B	410	-	-	4/4/4/4	-
4	GOL	A	407	-	-	4/4/4/4	-
4	GOL	B	407	-	-	2/4/4/4	-
4	GOL	B	409	-	-	4/4/4/4	-
5	MPD	A	412	-	-	1/5/5/5	-
5	MPD	B	411	-	-	4/5/5/5	-
4	GOL	A	409	-	-	2/4/4/4	-
4	GOL	B	406	-	-	4/4/4/4	-
3	EPE	A	405	-	-	4/9/19/19	0/1/1/1
6	CIT	B	405	-	-	6/16/16/16	-
4	GOL	A	408	-	-	0/4/4/4	-
5	MPD	A	410	-	-	2/5/5/5	-

All (2) bond length outliers are listed below:

Mol	Chain	Res	Type	Atoms	Z	Observed(Å)	Ideal(Å)
3	A	405	EPE	C10-S	2.94	1.81	1.77
3	B	404	EPE	C10-S	2.79	1.81	1.77

The worst 5 of 9 bond angle outliers are listed below:

Mol	Chain	Res	Type	Atoms	Z	Observed(°)	Ideal(°)
3	A	405	EPE	C5-N4-C3	5.10	120.31	108.83
6	B	405	CIT	O6-C6-C3	4.25	120.42	113.05
3	B	404	EPE	C5-N4-C3	3.64	117.03	108.83
3	A	405	EPE	O1S-S-C10	3.55	111.19	106.92
3	B	404	EPE	O3S-S-C10	2.71	110.15	105.77

There are no chirality outliers.

5 of 52 torsion outliers are listed below:

Mol	Chain	Res	Type	Atoms
3	B	404	EPE	C10-C9-N1-C2
3	B	404	EPE	C9-C10-S-O1S
3	B	404	EPE	C9-C10-S-O3S
4	A	406	GOL	O1-C1-C2-C3
4	A	407	GOL	C1-C2-C3-O3

There are no ring outliers.

8 monomers are involved in 12 short contacts:

Mol	Chain	Res	Type	Clashes	Symm-Clashes
5	B	412	MPD	2	0
3	B	404	EPE	1	0
5	A	412	MPD	1	0
5	B	411	MPD	2	0
4	A	409	GOL	1	0
3	A	405	EPE	1	0
6	B	405	CIT	1	0
5	A	410	MPD	3	0

5.7 Other polymers [i](#)

There are no such residues in this entry.

5.8 Polymer linkage issues [i](#)

There are no chain breaks in this entry.

6 Fit of model and data [i](#)

6.1 Protein, DNA and RNA chains [i](#)

In the following table, the column labelled ‘#RSRZ > 2’ contains the number (and percentage) of RSRZ outliers, followed by percent RSRZ outliers for the chain as percentile scores relative to all X-ray entries and entries of similar resolution. The OWAB column contains the minimum, median, 95th percentile and maximum values of the occupancy-weighted average B-factor per residue. The column labelled ‘Q < 0.9’ lists the number of (and percentage) of residues with an average occupancy less than 0.9.

Mol	Chain	Analysed	<RSRZ>	#RSRZ>2	OWAB(Å ²)	Q<0.9
1	A	327/327 (100%)	-0.41	6 (1%) 68 77	30, 42, 54, 134	0
1	B	327/327 (100%)	-0.36	7 (2%) 63 74	31, 45, 60, 130	0
All	All	654/654 (100%)	-0.38	13 (1%) 65 75	30, 44, 59, 134	0

The worst 5 of 13 RSRZ outliers are listed below:

Mol	Chain	Res	Type	RSRZ
1	A	205	GLY	7.1
1	A	206	GLY	7.0
1	B	206	GLY	6.4
1	A	208	GLN	5.5
1	B	205	GLY	5.3

6.2 Non-standard residues in protein, DNA, RNA chains [i](#)

There are no non-standard protein/DNA/RNA residues in this entry.

6.3 Carbohydrates [i](#)

There are no monosaccharides in this entry.

6.4 Ligands [i](#)

In the following table, the Atoms column lists the number of modelled atoms in the group and the number defined in the chemical component dictionary. The B-factors column lists the minimum, median, 95th percentile and maximum values of B factors of atoms in the group. The column labelled ‘Q < 0.9’ lists the number of atoms with occupancy less than 0.9.

Mol	Type	Chain	Res	Atoms	RSCC	RSR	B-factors(\AA^2)	Q<0.9
2	CA	A	404	1/1	0.72	0.19	91,91,91,91	0
4	GOL	A	406	6/6	0.77	0.30	60,69,77,81	0
5	MPD	B	411	8/8	0.80	0.24	55,66,74,75	0
4	GOL	A	409	6/6	0.81	0.21	66,69,73,74	0
6	CIT	B	405	13/13	0.81	0.27	60,75,80,81	0
4	GOL	B	408	6/6	0.84	0.21	67,73,76,84	0
4	GOL	B	409	6/6	0.87	0.17	42,53,58,65	0
4	GOL	B	410	6/6	0.87	0.19	56,67,68,74	0
4	GOL	B	407	6/6	0.88	0.14	68,72,74,74	0
4	GOL	A	407	6/6	0.91	0.15	59,61,64,69	0
5	MPD	A	411	8/8	0.91	0.26	58,64,70,82	0
3	EPE	A	405	15/15	0.93	0.12	43,50,72,94	0
2	CA	B	402	1/1	0.93	0.14	63,63,63,63	0
5	MPD	A	412	8/8	0.93	0.20	40,56,66,72	0
2	CA	B	403	1/1	0.93	0.07	84,84,84,84	0
4	GOL	A	408	6/6	0.93	0.20	52,66,80,85	0
4	GOL	B	406	6/6	0.94	0.20	52,58,62,62	0
5	MPD	B	412	8/8	0.95	0.19	54,62,67,69	0
2	CA	A	403	1/1	0.95	0.11	73,73,73,73	0
5	MPD	A	410	8/8	0.96	0.18	33,46,60,61	0
3	EPE	B	404	15/15	0.96	0.12	35,47,74,76	0
2	CA	A	402	1/1	0.97	0.14	61,61,61,61	0
2	CA	A	401	1/1	0.97	0.12	60,60,60,60	0
2	CA	B	401	1/1	0.99	0.09	59,59,59,59	0

6.5 Other polymers [\(i\)](#)

There are no such residues in this entry.