



Full wwPDB X-ray Structure Validation Report ⓘ

Feb 25, 2024 – 03:53 PM EST

PDB ID : 5JZD
Title : A re-refinement of the isochorismate synthase EntC
Authors : Meneely, K.M.; Lamb, A.L.
Deposited on : 2016-05-16
Resolution : 2.30 Å(reported)

This is a Full wwPDB X-ray Structure Validation Report for a publicly released PDB entry.

We welcome your comments at validation@mail.wwpdb.org

A user guide is available at

<https://www.wwpdb.org/validation/2017/XrayValidationReportHelp>

with specific help available everywhere you see the ⓘ symbol.

The types of validation reports are described at

<http://www.wwpdb.org/validation/2017/FAQs#types>.

The following versions of software and data (see [references ⓘ](#)) were used in the production of this report:

MolProbity : 4.02b-467
Mogul : 1.8.5 (274361), CSD as541be (2020)
Xtriage (Phenix) : 1.13
EDS : 2.36
Percentile statistics : 20191225.v01 (using entries in the PDB archive December 25th 2019)
Refmac : 5.8.0158
CCP4 : 7.0.044 (Gargrove)
Ideal geometry (proteins) : Engh & Huber (2001)
Ideal geometry (DNA, RNA) : Parkinson et al. (1996)
Validation Pipeline (wwPDB-VP) : 2.36

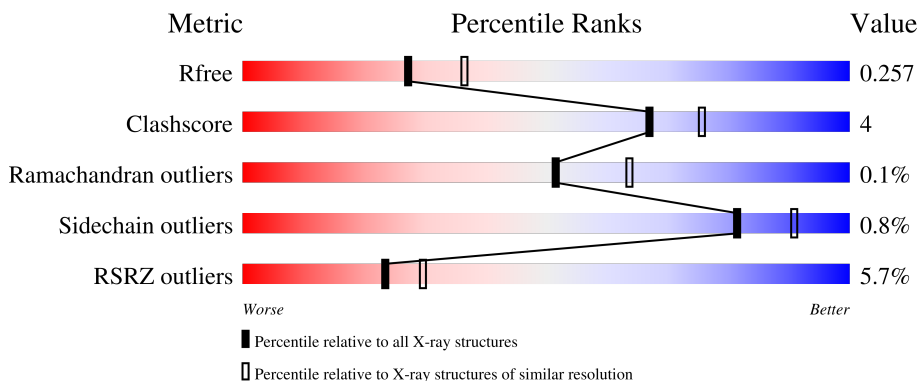
1 Overall quality at a glance

The following experimental techniques were used to determine the structure:

X-RAY DIFFRACTION

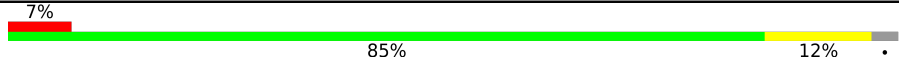
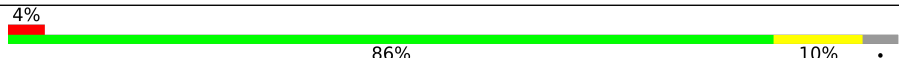
The reported resolution of this entry is 2.30 Å.

Percentile scores (ranging between 0-100) for global validation metrics of the entry are shown in the following graphic. The table shows the number of entries on which the scores are based.



Metric	Whole archive (#Entries)	Similar resolution (#Entries, resolution range(Å))
R_{free}	130704	5042 (2.30-2.30)
Clashscore	141614	5643 (2.30-2.30)
Ramachandran outliers	138981	5575 (2.30-2.30)
Sidechain outliers	138945	5575 (2.30-2.30)
RSRZ outliers	127900	4938 (2.30-2.30)

The table below summarises the geometric issues observed across the polymeric chains and their fit to the electron density. The red, orange, yellow and green segments of the lower bar indicate the fraction of residues that contain outliers for ≥ 3 , 2, 1 and 0 types of geometric quality criteria respectively. A grey segment represents the fraction of residues that are not modelled. The numeric value for each fraction is indicated below the corresponding segment, with a dot representing fractions $\leq 5\%$. The upper red bar (where present) indicates the fraction of residues that have poor fit to the electron density. The numeric value is given above the bar.

Mol	Chain	Length	Quality of chain
1	A	391	
1	B	391	

2 Entry composition [i](#)

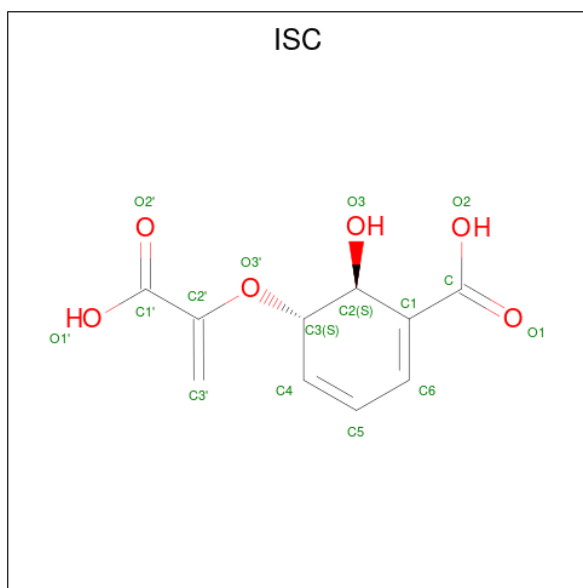
There are 4 unique types of molecules in this entry. The entry contains 11758 atoms, of which 5803 are hydrogens and 0 are deuteriums.

In the tables below, the ZeroOcc column contains the number of atoms modelled with zero occupancy, the AltConf column contains the number of residues with at least one atom in alternate conformation and the Trace column contains the number of residues modelled with at most 2 atoms.

- Molecule 1 is a protein called Isochorismate synthase EntC.

Mol	Chain	Residues	Atoms					ZeroOcc	AltConf	Trace	
			Total	C	H	N	O				S
1	A	378	Total 5820	C 1843	H 2896	N 520	O 552	S 9	0	0	0
1	B	377	Total 5810	C 1840	H 2891	N 519	O 551	S 9	0	0	0

- Molecule 2 is (5S,6S)-5-[(1-carboxyethenyl)oxy]-6-hydroxycyclohexa-1,3-diene-1-carboxylic acid (three-letter code: ISC) (formula: C₁₀H₁₀O₆).



Mol	Chain	Residues	Atoms				ZeroOcc	AltConf
			Total	C	H	O		
2	A	1	Total 24	C 10	H 8	O 6	0	0
2	B	1	Total 24	C 10	H 8	O 6	0	0

- Molecule 3 is MAGNESIUM ION (three-letter code: MG) (formula: Mg).

Mol	Chain	Residues	Atoms	ZeroOcc	AltConf
3	A	1	Total Mg 1 1	0	0
3	B	1	Total Mg 1 1	0	0

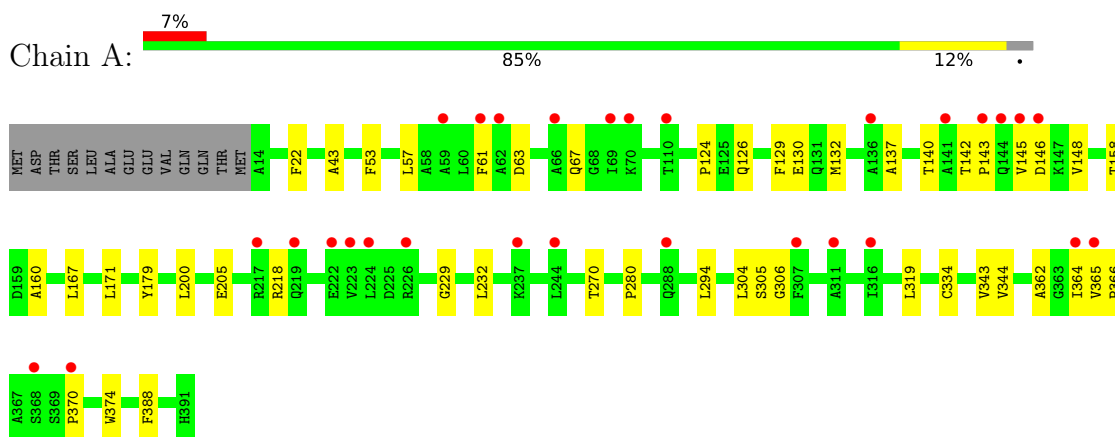
- Molecule 4 is water.

Mol	Chain	Residues	Atoms	ZeroOcc	AltConf
4	A	17	Total O 17 17	0	0
4	B	61	Total O 61 61	0	0

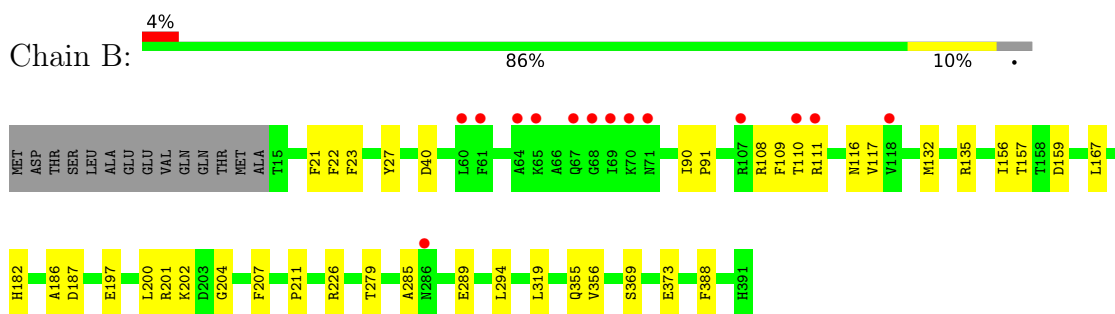
3 Residue-property plots [i](#)

These plots are drawn for all protein, RNA, DNA and oligosaccharide chains in the entry. The first graphic for a chain summarises the proportions of the various outlier classes displayed in the second graphic. The second graphic shows the sequence view annotated by issues in geometry and electron density. Residues are color-coded according to the number of geometric quality criteria for which they contain at least one outlier: green = 0, yellow = 1, orange = 2 and red = 3 or more. A red dot above a residue indicates a poor fit to the electron density ($RSRZ > 2$). Stretches of 2 or more consecutive residues without any outlier are shown as a green connector. Residues present in the sample, but not in the model, are shown in grey.

- Molecule 1: Isochorismate synthase EntC



- Molecule 1: Isochorismate synthase EntC



4 Data and refinement statistics

Property	Value	Source
Space group	P 21 21 21	Depositor
Cell constants a, b, c, α , β , γ	62.47Å 104.80Å 140.01Å 90.00° 90.00° 90.00°	Depositor
Resolution (Å)	41.95 – 2.30 42.59 – 2.30	Depositor EDS
% Data completeness (in resolution range)	99.7 (41.95-2.30) 99.7 (42.59-2.30)	Depositor EDS
R_{merge}	(Not available)	Depositor
R_{sym}	(Not available)	Depositor
$\langle I/\sigma(I) \rangle$ ¹	1.61 (at 2.29Å)	Xtrriage
Refinement program	PHENIX (1.10_2155)	Depositor
R, R_{free}	0.195 , 0.256 0.196 , 0.257	Depositor DCC
R_{free} test set	2088 reflections (5.05%)	wwPDB-VP
Wilson B-factor (Å ²)	42.1	Xtrriage
Anisotropy	0.180	Xtrriage
Bulk solvent k_{sol} (e/Å ³), B_{sol} (Å ²)	0.38 , 39.5	EDS
L-test for twinning ²	$\langle L \rangle = 0.49$, $\langle L^2 \rangle = 0.32$	Xtrriage
Estimated twinning fraction	No twinning to report.	Xtrriage
F_o, F_c correlation	0.94	EDS
Total number of atoms	11758	wwPDB-VP
Average B, all atoms (Å ²)	57.0	wwPDB-VP

Xtrriage's analysis on translational NCS is as follows: *The largest off-origin peak in the Patterson function is 5.91% of the height of the origin peak. No significant pseudotranslation is detected.*

¹Intensities estimated from amplitudes.

²Theoretical values of $\langle |L| \rangle$, $\langle L^2 \rangle$ for acentric reflections are 0.5, 0.333 respectively for untwinned datasets, and 0.375, 0.2 for perfectly twinned datasets.

5 Model quality [i](#)

5.1 Standard geometry [i](#)

Bond lengths and bond angles in the following residue types are not validated in this section: MG, ISC

The Z score for a bond length (or angle) is the number of standard deviations the observed value is removed from the expected value. A bond length (or angle) with $|Z| > 5$ is considered an outlier worth inspection. RMSZ is the root-mean-square of all Z scores of the bond lengths (or angles).

Mol	Chain	Bond lengths		Bond angles	
		RMSZ	# $ Z > 5$	RMSZ	# $ Z > 5$
1	A	0.57	1/2991 (0.0%)	0.71	0/4066
1	B	0.68	0/2986	0.76	1/4059 (0.0%)
All	All	0.63	1/5977 (0.0%)	0.74	1/8125 (0.0%)

Chiral center outliers are detected by calculating the chiral volume of a chiral center and verifying if the center is modelled as a planar moiety or with the opposite hand. A planarity outlier is detected by checking planarity of atoms in a peptide group, atoms in a mainchain group or atoms of a sidechain that are expected to be planar.

Mol	Chain	#Chirality outliers	#Planarity outliers
1	A	0	1

All (1) bond length outliers are listed below:

Mol	Chain	Res	Type	Atoms	Z	Observed(Å)	Ideal(Å)
1	A	334	CYS	CB-SG	-5.27	1.73	1.81

All (1) bond angle outliers are listed below:

Mol	Chain	Res	Type	Atoms	Z	Observed(°)	Ideal(°)
1	B	40	ASP	CB-CG-OD1	5.93	123.64	118.30

There are no chirality outliers.

All (1) planarity outliers are listed below:

Mol	Chain	Res	Type	Group
1	A	362	ALA	Peptide

5.2 Too-close contacts [i](#)

In the following table, the Non-H and H(model) columns list the number of non-hydrogen atoms and hydrogen atoms in the chain respectively. The H(added) column lists the number of hydrogen atoms added and optimized by MolProbity. The Clashes column lists the number of clashes within the asymmetric unit, whereas Symm-Clashes lists symmetry-related clashes.

Mol	Chain	Non-H	H(model)	H(added)	Clashes	Symm-Clashes
1	A	2924	2896	2895	25	0
1	B	2919	2891	2890	21	0
2	A	16	8	8	0	0
2	B	16	8	8	1	0
3	A	1	0	0	0	0
3	B	1	0	0	0	0
4	A	17	0	0	1	0
4	B	61	0	0	1	0
All	All	5955	5803	5801	46	0

The all-atom clashscore is defined as the number of clashes found per 1000 atoms (including hydrogen atoms). The all-atom clashscore for this structure is 4.

All (46) close contacts within the same asymmetric unit are listed below, sorted by their clash magnitude.

Atom-1	Atom-2	Interatomic distance (Å)	Clash overlap (Å)
1:A:146:ASP:OD1	4:A:501:HOH:O	2.16	0.59
1:B:157:THR:HG22	1:B:355:GLN:OE1	2.04	0.57
1:A:200:LEU:HD21	1:A:294:LEU:HB2	1.85	0.57
1:B:117:VAL:N	4:B:501:HOH:O	2.19	0.57
1:A:132:MET:SD	1:A:319:LEU:O	2.64	0.55
1:A:130:GLU:HA	1:A:370:PRO:HB3	1.90	0.53
1:B:22:PHE:HB3	1:B:182:HIS:HB3	1.92	0.51
1:A:305:SER:OG	1:A:306:GLY:N	2.43	0.51
1:A:200:LEU:HD21	1:A:294:LEU:CB	2.41	0.50
1:A:158:THR:HG23	1:A:160:ALA:O	2.12	0.49
1:B:200:LEU:CD2	1:B:294:LEU:HB2	2.43	0.48
1:B:108:ARG:O	1:B:110:THR:HG23	2.14	0.48
1:B:156:ILE:HB	1:B:356:VAL:HG13	1.96	0.47
1:A:140:THR:HA	1:A:145:VAL:O	2.15	0.46
1:A:142:THR:HB	1:A:143:PRO:HD2	1.97	0.46
1:A:229:GLY:O	1:A:232:LEU:N	2.49	0.46
1:B:132:MET:HE2	1:B:319:LEU:O	2.16	0.45
1:A:148:VAL:O	1:A:364:ILE:HB	2.15	0.45
1:A:124:PRO:HG3	1:A:132:MET:HE1	1.98	0.45

Continued on next page...

Continued from previous page...

Atom-1	Atom-2	Interatomic distance (Å)	Clash overlap (Å)
1:B:167:LEU:HD21	1:B:388:PHE:CZ	2.51	0.45
1:A:137:ALA:O	1:A:140:THR:OG1	2.33	0.45
1:A:218:ARG:NH1	1:A:270:THR:HG21	2.33	0.44
1:B:116:ASN:HB2	1:B:159:ASP:OD2	2.17	0.44
1:A:43:ALA:HA	1:A:53:PHE:CD1	2.53	0.44
1:B:226:ARG:O	1:B:226:ARG:HD3	2.17	0.44
1:A:145:VAL:HG12	1:A:146:ASP:N	2.33	0.43
1:A:171:LEU:C	1:A:171:LEU:HD23	2.38	0.43
1:B:197:GLU:OE1	2:B:401:ISC:H4	2.18	0.43
1:A:304:LEU:HD21	1:A:344:VAL:HG11	2.01	0.43
1:B:201:ARG:O	1:B:207:PHE:HA	2.19	0.43
1:A:167:LEU:HD21	1:A:388:PHE:CZ	2.54	0.43
1:B:186:ALA:O	1:B:187:ASP:HB2	2.19	0.43
1:A:179:TYR:CG	1:A:343:VAL:HG11	2.55	0.42
1:B:21:PHE:CE2	1:B:23:PHE:HB2	2.55	0.42
1:B:202:LYS:HE3	1:B:204:GLY:O	2.19	0.42
1:A:129:PHE:HA	1:A:132:MET:HE2	2.02	0.42
1:A:365:VAL:HB	1:A:366:PRO:HD2	2.02	0.42
1:B:369:SER:O	1:B:373:GLU:HG2	2.20	0.42
1:B:90:ILE:HG22	1:B:91:PRO:O	2.19	0.41
1:B:285:ALA:HB1	1:B:289:GLU:HG3	2.02	0.41
1:B:108:ARG:O	1:B:109:PHE:C	2.58	0.41
1:B:156:ILE:HB	1:B:356:VAL:CG1	2.50	0.41
1:B:211:PRO:HD2	1:B:279:THR:O	2.20	0.41
1:A:57:LEU:HD11	1:A:61:PHE:CE2	2.56	0.41
1:A:63:ASP:O	1:A:67:GLN:HG3	2.22	0.40
1:A:126:GLN:HA	1:A:374:TRP:CZ3	2.57	0.40

There are no symmetry-related clashes.

5.3 Torsion angles [i](#)

5.3.1 Protein backbone [i](#)

In the following table, the Percentiles column shows the percent Ramachandran outliers of the chain as a percentile score with respect to all X-ray entries followed by that with respect to entries of similar resolution.

The Analysed column shows the number of residues for which the backbone conformation was analysed, and the total number of residues.

Mol	Chain	Analysed	Favoured	Allowed	Outliers	Percentiles	
1	A	376/391 (96%)	351 (93%)	25 (7%)	0	100	100
1	B	375/391 (96%)	356 (95%)	18 (5%)	1 (0%)	41	50
All	All	751/782 (96%)	707 (94%)	43 (6%)	1 (0%)	51	64

All (1) Ramachandran outliers are listed below:

Mol	Chain	Res	Type
1	B	27	TYR

5.3.2 Protein sidechains [i](#)

In the following table, the Percentiles column shows the percent sidechain outliers of the chain as a percentile score with respect to all X-ray entries followed by that with respect to entries of similar resolution.

The Analysed column shows the number of residues for which the sidechain conformation was analysed, and the total number of residues.

Mol	Chain	Analysed	Rotameric	Outliers	Percentiles	
1	A	315/327 (96%)	312 (99%)	3 (1%)	76	87
1	B	315/327 (96%)	313 (99%)	2 (1%)	86	94
All	All	630/654 (96%)	625 (99%)	5 (1%)	81	91

All (5) residues with a non-rotameric sidechain are listed below:

Mol	Chain	Res	Type
1	A	22	PHE
1	A	205	GLU
1	A	280	PRO
1	B	111	ARG
1	B	135	ARG

Sometimes sidechains can be flipped to improve hydrogen bonding and reduce clashes. There are no such sidechains identified.

5.3.3 RNA [i](#)

There are no RNA molecules in this entry.

5.4 Non-standard residues in protein, DNA, RNA chains [i](#)

There are no non-standard protein/DNA/RNA residues in this entry.

5.5 Carbohydrates [i](#)

There are no monosaccharides in this entry.

5.6 Ligand geometry [i](#)

Of 4 ligands modelled in this entry, 2 are monoatomic - leaving 2 for Mogul analysis.

In the following table, the Counts columns list the number of bonds (or angles) for which Mogul statistics could be retrieved, the number of bonds (or angles) that are observed in the model and the number of bonds (or angles) that are defined in the Chemical Component Dictionary. The Link column lists molecule types, if any, to which the group is linked. The Z score for a bond length (or angle) is the number of standard deviations the observed value is removed from the expected value. A bond length (or angle) with $|Z| > 2$ is considered an outlier worth inspection. RMSZ is the root-mean-square of all Z scores of the bond lengths (or angles).

Mol	Type	Chain	Res	Link	Bond lengths			Bond angles		
					Counts	RMSZ	# Z > 2	Counts	RMSZ	# Z > 2
2	ISC	B	401	3	15,16,16	3.83	9 (60%)	15,22,22	2.16	5 (33%)
2	ISC	A	401	3	15,16,16	4.19	8 (53%)	15,22,22	2.44	6 (40%)

In the following table, the Chirals column lists the number of chiral outliers, the number of chiral centers analysed, the number of these observed in the model and the number defined in the Chemical Component Dictionary. Similar counts are reported in the Torsion and Rings columns. '-' means no outliers of that kind were identified.

Mol	Type	Chain	Res	Link	Chirals	Torsions	Rings
2	ISC	B	401	3	-	0/10/26/26	0/1/1/1
2	ISC	A	401	3	-	0/10/26/26	0/1/1/1

All (17) bond length outliers are listed below:

Mol	Chain	Res	Type	Atoms	Z	Observed(Å)	Ideal(Å)
2	A	401	ISC	C6-C1	9.15	1.53	1.35
2	B	401	ISC	C6-C1	9.00	1.53	1.35
2	A	401	ISC	C5-C4	8.69	1.53	1.33
2	B	401	ISC	C5-C4	7.62	1.51	1.33
2	A	401	ISC	C-C1	5.91	1.56	1.48
2	A	401	ISC	C5-C6	5.30	1.54	1.40

Continued on next page...

Continued from previous page...

Mol	Chain	Res	Type	Atoms	Z	Observed(Å)	Ideal(Å)
2	B	401	ISC	C5-C6	5.21	1.54	1.40
2	A	401	ISC	C2'-C1'	3.57	1.52	1.49
2	B	401	ISC	C-C1	3.34	1.53	1.48
2	A	401	ISC	O3-C2	2.71	1.47	1.42
2	B	401	ISC	O2-C	-2.71	1.22	1.30
2	B	401	ISC	C3-C4	2.32	1.53	1.49
2	B	401	ISC	C2'-C1'	2.27	1.51	1.49
2	B	401	ISC	O3-C2	2.23	1.46	1.42
2	A	401	ISC	O2-C	-2.19	1.24	1.30
2	A	401	ISC	C3-C4	2.10	1.53	1.49
2	B	401	ISC	O1-C	2.07	1.28	1.22

All (11) bond angle outliers are listed below:

Mol	Chain	Res	Type	Atoms	Z	Observed(°)	Ideal(°)
2	B	401	ISC	C3-O3'-C2'	4.87	124.71	117.18
2	A	401	ISC	C3-O3'-C2'	4.75	124.53	117.18
2	A	401	ISC	C5-C6-C1	-3.98	116.10	121.01
2	B	401	ISC	C3-C4-C5	-3.78	113.90	120.98
2	A	401	ISC	O1'-C1'-C2'	3.67	120.17	113.91
2	A	401	ISC	C3-C4-C5	-3.33	114.75	120.98
2	B	401	ISC	C5-C6-C1	-3.16	117.11	121.01
2	A	401	ISC	C6-C5-C4	-3.12	116.11	120.61
2	B	401	ISC	C6-C5-C4	-2.44	117.09	120.61
2	B	401	ISC	O1'-C1'-C2'	2.32	117.88	113.91
2	A	401	ISC	O2-C-O1	-2.06	118.90	123.61

There are no chirality outliers.

There are no torsion outliers.

There are no ring outliers.

1 monomer is involved in 1 short contact:

Mol	Chain	Res	Type	Clashes	Symm-Clashes
2	B	401	ISC	1	0

5.7 Other polymers [i](#)

There are no such residues in this entry.

5.8 Polymer linkage issues

There are no chain breaks in this entry.

6 Fit of model and data

6.1 Protein, DNA and RNA chains

In the following table, the column labelled ‘#RSRZ > 2’ contains the number (and percentage) of RSRZ outliers, followed by percent RSRZ outliers for the chain as percentile scores relative to all X-ray entries and entries of similar resolution. The OWAB column contains the minimum, median, 95th percentile and maximum values of the occupancy-weighted average B-factor per residue. The column labelled ‘Q < 0.9’ lists the number of (and percentage) of residues with an average occupancy less than 0.9.

Mol	Chain	Analysed	<RSRZ>	#RSRZ>2	OWAB(Å ²)	Q<0.9
1	A	378/391 (96%)	0.56	29 (7%) 13 17	33, 59, 88, 111	0
1	B	377/391 (96%)	0.04	14 (3%) 41 48	23, 41, 71, 115	0
All	All	755/782 (96%)	0.30	43 (5%) 23 30	23, 50, 83, 115	0

All (43) RSRZ outliers are listed below:

Mol	Chain	Res	Type	RSRZ
1	A	145	VAL	7.1
1	B	69	ILE	5.4
1	A	224	LEU	5.0
1	A	70	LYS	4.8
1	A	365	VAL	4.5
1	B	70	LYS	3.9
1	A	66	ALA	3.6
1	A	223	VAL	3.6
1	A	237	LYS	3.3
1	A	141	ALA	3.0
1	A	136	ALA	3.0
1	A	217	ARG	3.0
1	A	61	PHE	2.9
1	A	59	ALA	2.9
1	B	71	ASN	2.9
1	A	144	GLN	2.8
1	A	69	ILE	2.8
1	A	146	ASP	2.8
1	A	62	ALA	2.7
1	A	222	GLU	2.7
1	A	364	ILE	2.7
1	A	307	PHE	2.6
1	B	118	VAL	2.5
1	B	111	ARG	2.5

Continued on next page...

Continued from previous page...

Mol	Chain	Res	Type	RSRZ
1	A	143	PRO	2.5
1	B	110	THR	2.5
1	A	288	GLN	2.5
1	A	370	PRO	2.5
1	A	219	GLN	2.4
1	A	316	ILE	2.3
1	B	68	GLY	2.3
1	A	244	LEU	2.3
1	B	61	PHE	2.3
1	A	368	SER	2.2
1	B	286	ASN	2.2
1	B	60	LEU	2.2
1	B	107	ARG	2.2
1	A	226	ARG	2.2
1	B	64	ALA	2.1
1	B	65	LYS	2.1
1	A	110	THR	2.1
1	A	311	ALA	2.1
1	B	67	GLN	2.0

6.2 Non-standard residues in protein, DNA, RNA chains [i](#)

There are no non-standard protein/DNA/RNA residues in this entry.

6.3 Carbohydrates [i](#)

There are no monosaccharides in this entry.

6.4 Ligands [i](#)

In the following table, the Atoms column lists the number of modelled atoms in the group and the number defined in the chemical component dictionary. The B-factors column lists the minimum, median, 95th percentile and maximum values of B factors of atoms in the group. The column labelled 'Q< 0.9' lists the number of atoms with occupancy less than 0.9.

Mol	Type	Chain	Res	Atoms	RSCC	RSR	B-factors(Å ²)	Q<0.9
2	ISC	A	401	16/16	0.92	0.15	48,59,76,91	0
2	ISC	B	401	16/16	0.94	0.17	31,37,53,63	0
3	MG	A	402	1/1	0.95	0.04	71,71,71,71	0
3	MG	B	402	1/1	0.98	0.14	35,35,35,35	0

6.5 Other polymers [i](#)

There are no such residues in this entry.