



Full wwPDB X-ray Structure Validation Report ⓘ

Aug 28, 2023 – 03:06 PM EDT

PDB ID : 3JVG
Title : Crystal Structure of chicken CD1-1
Authors : Dvir, H.; Wang, J.; Zajonc, D.M.
Deposited on : 2009-09-16
Resolution : 2.20 Å(reported)

This is a Full wwPDB X-ray Structure Validation Report for a publicly released PDB entry.

We welcome your comments at validation@mail.wwpdb.org

A user guide is available at

<https://www.wwpdb.org/validation/2017/XrayValidationReportHelp>

with specific help available everywhere you see the ⓘ symbol.

The types of validation reports are described at

<http://www.wwpdb.org/validation/2017/FAQs#types>.

The following versions of software and data (see [references ⓘ](#)) were used in the production of this report:

MolProbity : 4.02b-467
Mogul : 1.8.5 (274361), CSD as541be (2020)
Xtriage (Phenix) : 1.13
EDS : 2.35
Percentile statistics : 20191225.v01 (using entries in the PDB archive December 25th 2019)
Refmac : 5.8.0158
CCP4 : 7.0.044 (Gargrove)
Ideal geometry (proteins) : Engh & Huber (2001)
Ideal geometry (DNA, RNA) : Parkinson et al. (1996)
Validation Pipeline (wwPDB-VP) : 2.35

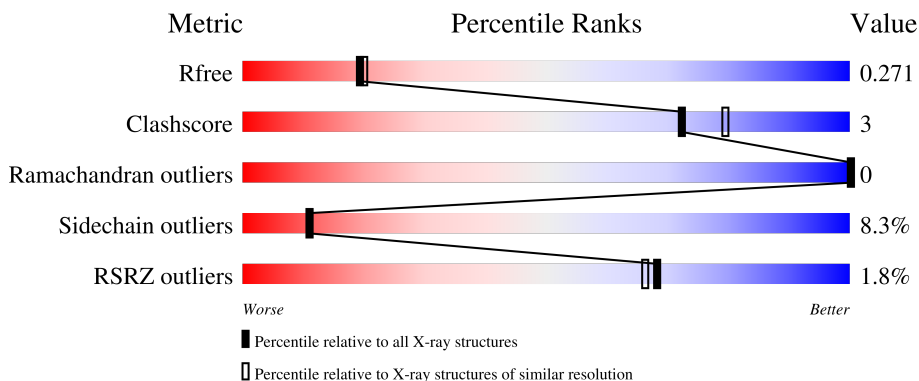
1 Overall quality at a glance

The following experimental techniques were used to determine the structure:

X-RAY DIFFRACTION

The reported resolution of this entry is 2.20 Å.

Percentile scores (ranging between 0-100) for global validation metrics of the entry are shown in the following graphic. The table shows the number of entries on which the scores are based.



Metric	Whole archive (#Entries)	Similar resolution (#Entries, resolution range(Å))
R_{free}	130704	4898 (2.20-2.20)
Clashscore	141614	5594 (2.20-2.20)
Ramachandran outliers	138981	5503 (2.20-2.20)
Sidechain outliers	138945	5504 (2.20-2.20)
RSRZ outliers	127900	4800 (2.20-2.20)

The table below summarises the geometric issues observed across the polymeric chains and their fit to the electron density. The red, orange, yellow and green segments of the lower bar indicate the fraction of residues that contain outliers for ≥ 3 , 2, 1 and 0 types of geometric quality criteria respectively. A grey segment represents the fraction of residues that are not modelled. The numeric value for each fraction is indicated below the corresponding segment, with a dot representing fractions $\leq 5\%$. The upper red bar (where present) indicates the fraction of residues that have poor fit to the electron density. The numeric value is given above the bar.

Mol	Chain	Length	Quality of chain
1	A	281	 2% 79% 12% • 6%
1	B	281	 2% 81% 12% •• 5%
2	C	98	 % 89% 9% ••
2	D	98	 91% 8% •

2 Entry composition

There are 6 unique types of molecules in this entry. The entry contains 6274 atoms, of which 0 are hydrogens and 0 are deuteriums.

In the tables below, the ZeroOcc column contains the number of atoms modelled with zero occupancy, the AltConf column contains the number of residues with at least one atom in alternate conformation and the Trace column contains the number of residues modelled with at most 2 atoms.

- Molecule 1 is a protein called T-cell surface glycoprotein CD1A1 antigen.

Mol	Chain	Residues	Atoms					ZeroOcc	AltConf	Trace
			Total	C	N	O	S			
1	A	264	2081	1337	357	376	11	6	1	0
1	B	267	2106	1349	364	382	11	0	1	0

There are 12 discrepancies between the modelled and reference sequences:

Chain	Residue	Modelled	Actual	Comment	Reference
A	277	HIS	-	expression tag	UNP A5HUM9
A	278	HIS	-	expression tag	UNP A5HUM9
A	279	HIS	-	expression tag	UNP A5HUM9
A	280	HIS	-	expression tag	UNP A5HUM9
A	281	HIS	-	expression tag	UNP A5HUM9
A	282	HIS	-	expression tag	UNP A5HUM9
B	277	HIS	-	expression tag	UNP A5HUM9
B	278	HIS	-	expression tag	UNP A5HUM9
B	279	HIS	-	expression tag	UNP A5HUM9
B	280	HIS	-	expression tag	UNP A5HUM9
B	281	HIS	-	expression tag	UNP A5HUM9
B	282	HIS	-	expression tag	UNP A5HUM9

- Molecule 2 is a protein called Beta-2-microglobulin.

Mol	Chain	Residues	Atoms					ZeroOcc	AltConf	Trace
			Total	C	N	O	S			
2	C	98	775	498	126	146	5	0	0	0
2	D	98	776	499	126	146	5	0	0	0

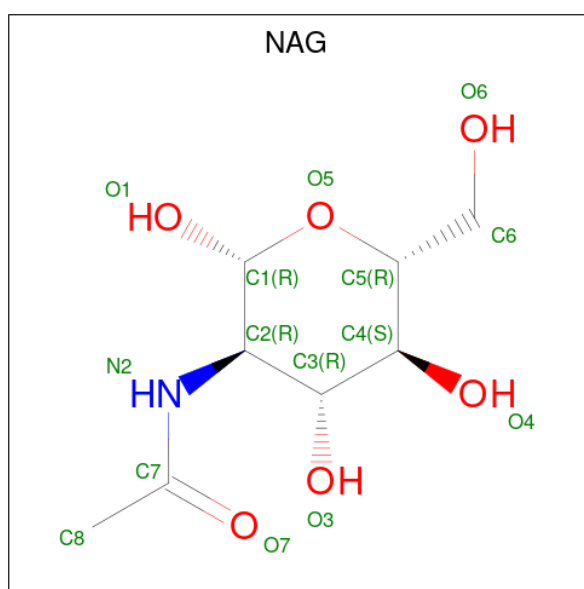
- Molecule 3 is UNKNOWN LIGAND (three-letter code: UNL) (formula:).

Mol	Chain	Residues	Atoms	ZeroOcc	AltConf
3	A	2	Total C 61 61	0	0
3	B	2	Total C 61 61	0	0

- Molecule 4 is CHLORIDE ION (three-letter code: CL) (formula: Cl).

Mol	Chain	Residues	Atoms	ZeroOcc	AltConf
4	A	1	Total Cl 1 1	0	0
4	D	1	Total Cl 1 1	0	0

- Molecule 5 is 2-acetamido-2-deoxy-beta-D-glucopyranose (three-letter code: NAG) (formula: C₈H₁₅NO₆).



Mol	Chain	Residues	Atoms	ZeroOcc	AltConf
5	A	1	Total C N O 14 8 1 5	0	0
5	A	1	Total C N O 14 8 1 5	0	0
5	A	1	Total C N O 14 8 1 5	0	0
5	B	1	Total C N O 14 8 1 5	0	0
5	B	1	Total C N O 14 8 1 5	0	0

Continued on next page...

Continued from previous page...

Mol	Chain	Residues	Atoms				ZeroOcc	AltConf
			Total	C	N	O		
5	B	1	14	8	1	5	0	0

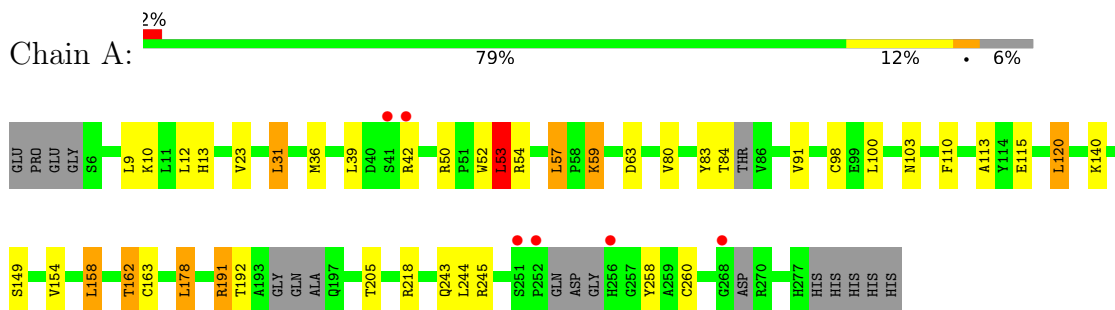
- Molecule 6 is water.

Mol	Chain	Residues	Atoms		ZeroOcc	AltConf
6	A	96	Total 96	O 96	0	0
6	B	100	Total 100	O 100	0	0
6	C	61	Total 61	O 61	0	0
6	D	71	Total 71	O 71	0	0

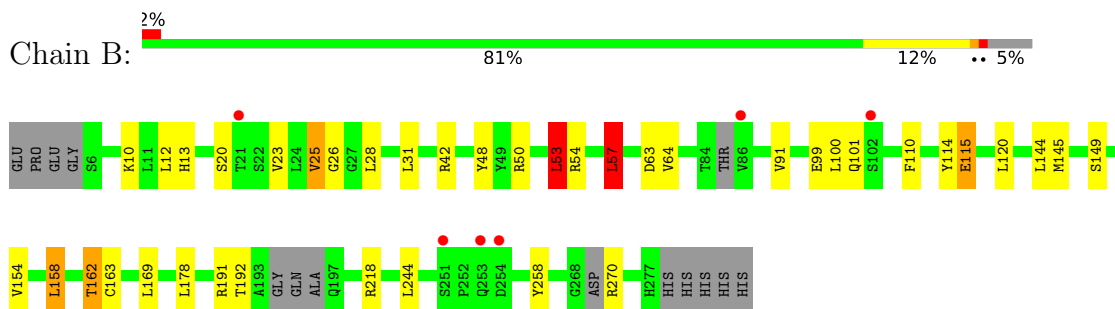
3 Residue-property plots [i](#)

These plots are drawn for all protein, RNA, DNA and oligosaccharide chains in the entry. The first graphic for a chain summarises the proportions of the various outlier classes displayed in the second graphic. The second graphic shows the sequence view annotated by issues in geometry and electron density. Residues are color-coded according to the number of geometric quality criteria for which they contain at least one outlier: green = 0, yellow = 1, orange = 2 and red = 3 or more. A red dot above a residue indicates a poor fit to the electron density ($RSRZ > 2$). Stretches of 2 or more consecutive residues without any outlier are shown as a green connector. Residues present in the sample, but not in the model, are shown in grey.

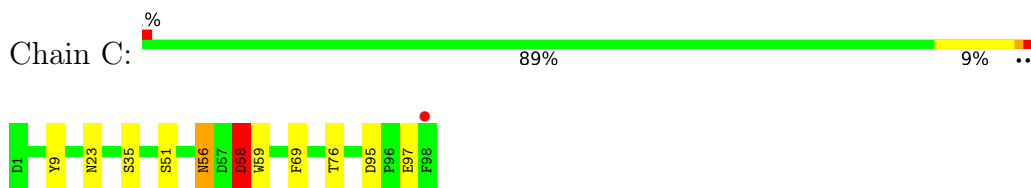
- Molecule 1: T-cell surface glycoprotein CD1A1 antigen



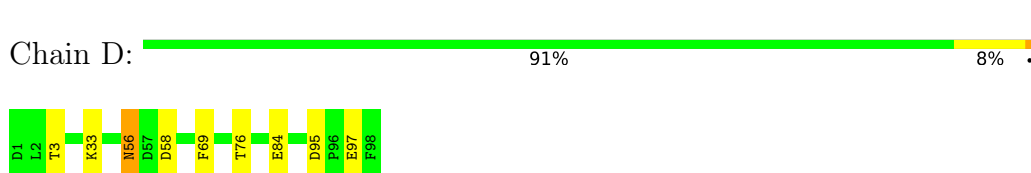
- Molecule 1: T-cell surface glycoprotein CD1A1 antigen



- Molecule 2: Beta-2-microglobulin



- Molecule 2: Beta-2-microglobulin



4 Data and refinement statistics

Property	Value	Source
Space group	P 21 21 21	Depositor
Cell constants a, b, c, α , β , γ	40.84Å 112.12Å 201.77Å 90.00° 90.00° 90.00°	Depositor
Resolution (Å)	43.06 – 2.20 43.06 – 2.20	Depositor EDS
% Data completeness (in resolution range)	99.0 (43.06-2.20) 99.0 (43.06-2.20)	Depositor EDS
R_{merge}	(Not available)	Depositor
R_{sym}	0.07	Depositor
$\langle I/\sigma(I) \rangle$ ¹	4.36 (at 2.20Å)	Xtrriage
Refinement program	REFMAC 5.5.0088	Depositor
R, R_{free}	0.216 , 0.252 0.238 , 0.271	Depositor DCC
R_{free} test set	2420 reflections (5.06%)	wwPDB-VP
Wilson B-factor (Å ²)	26.8	Xtrriage
Anisotropy	0.687	Xtrriage
Bulk solvent k_{sol} (e/Å ³), B_{sol} (Å ²)	0.36 , 31.2	EDS
L-test for twinning ²	$\langle L \rangle = 0.48$, $\langle L^2 \rangle = 0.32$	Xtrriage
Estimated twinning fraction	No twinning to report.	Xtrriage
F_o, F_c correlation	0.94	EDS
Total number of atoms	6274	wwPDB-VP
Average B, all atoms (Å ²)	28.0	wwPDB-VP

Xtrriage's analysis on translational NCS is as follows: *The analyses of the Patterson function reveals a significant off-origin peak that is 51.27 % of the origin peak, indicating pseudo-translational symmetry. The chance of finding a peak of this or larger height randomly in a structure without pseudo-translational symmetry is equal to 5.7485e-05. The detected translational NCS is most likely also responsible for the elevated intensity ratio.*

¹Intensities estimated from amplitudes.

²Theoretical values of $\langle |L| \rangle$, $\langle L^2 \rangle$ for acentric reflections are 0.5, 0.333 respectively for untwinned datasets, and 0.375, 0.2 for perfectly twinned datasets.

5 Model quality i

5.1 Standard geometry i

Bond lengths and bond angles in the following residue types are not validated in this section: NAG, CL, UNL

The Z score for a bond length (or angle) is the number of standard deviations the observed value is removed from the expected value. A bond length (or angle) with $|Z| > 5$ is considered an outlier worth inspection. RMSZ is the root-mean-square of all Z scores of the bond lengths (or angles).

Mol	Chain	Bond lengths		Bond angles	
		RMSZ	# Z >5	RMSZ	# Z >5
1	A	0.94	3/2132 (0.1%)	0.93	6/2898 (0.2%)
1	B	0.89	1/2158 (0.0%)	0.93	3/2934 (0.1%)
2	C	1.03	1/800 (0.1%)	0.87	1/1088 (0.1%)
2	D	1.00	0/801	0.80	0/1089
All	All	0.94	5/5891 (0.1%)	0.91	10/8009 (0.1%)

All (5) bond length outliers are listed below:

Mol	Chain	Res	Type	Atoms	Z	Observed(Å)	Ideal(Å)
1	A	115[A]	GLU	CG-CD	6.95	1.62	1.51
1	A	115[B]	GLU	CG-CD	6.95	1.62	1.51
1	A	260	CYS	CB-SG	-6.25	1.71	1.82
1	B	163	CYS	CB-SG	-5.25	1.73	1.81
2	C	51	SER	CB-OG	5.11	1.48	1.42

All (10) bond angle outliers are listed below:

Mol	Chain	Res	Type	Atoms	Z	Observed(°)	Ideal(°)
2	C	58	ASP	CB-CG-OD1	-7.22	111.81	118.30
1	B	53	LEU	CA-CB-CG	7.03	131.47	115.30
1	A	53	LEU	CA-CB-CG	6.87	131.09	115.30
1	A	57	LEU	CA-CB-CG	6.52	130.30	115.30
1	A	39	LEU	CA-CB-CG	6.09	129.31	115.30
1	A	39	LEU	CB-CG-CD2	-5.91	100.96	111.00
1	B	63	ASP	CB-CG-OD2	-5.65	113.22	118.30
1	A	120	LEU	CA-CB-CG	5.54	128.04	115.30
1	A	63	ASP	CB-CG-OD1	5.44	123.19	118.30
1	B	57	LEU	CA-CB-CG	5.38	127.67	115.30

There are no chirality outliers.

There are no planarity outliers.

5.2 Too-close contacts

In the following table, the Non-H and H(model) columns list the number of non-hydrogen atoms and hydrogen atoms in the chain respectively. The H(added) column lists the number of hydrogen atoms added and optimized by MolProbity. The Clashes column lists the number of clashes within the asymmetric unit, whereas Symm-Clashes lists symmetry-related clashes.

Mol	Chain	Non-H	H(model)	H(added)	Clashes	Symm-Clashes
1	A	2081	0	2064	19	0
1	B	2106	0	2085	14	0
2	C	775	0	735	5	0
2	D	776	0	737	3	0
3	A	61	0	0	1	0
3	B	61	0	0	1	0
4	A	1	0	0	0	0
4	D	1	0	0	0	0
5	A	42	0	39	0	0
5	B	42	0	39	0	0
6	A	96	0	0	2	0
6	B	100	0	0	0	0
6	C	61	0	0	0	0
6	D	71	0	0	0	0
All	All	6274	0	5699	38	0

The all-atom clashscore is defined as the number of clashes found per 1000 atoms (including hydrogen atoms). The all-atom clashscore for this structure is 3.

All (38) close contacts within the same asymmetric unit are listed below, sorted by their clash magnitude.

Atom-1	Atom-2	Interatomic distance (Å)	Clash overlap (Å)
1:B:10:LYS:HD3	1:B:12:LEU:HD21	1.56	0.88
1:A:10:LYS:HD3	1:A:12:LEU:HD21	1.67	0.75
1:A:80:VAL:O	1:A:84:THR:HG23	1.86	0.74
1:A:158:LEU:HB3	3:A:1:UNL:C12	2.23	0.68
1:B:57:LEU:HD13	1:B:169:LEU:HD21	1.77	0.65
1:B:50:ARG:HB2	1:B:53:LEU:HD22	1.83	0.59
1:B:158:LEU:HA	1:B:162:THR:HG23	1.83	0.58
2:D:95:ASP:O	2:D:97:GLU:N	2.36	0.58
1:A:98:CYS:HG	1:A:163:CYS:CB	2.17	0.57
1:A:218:ARG:HD3	1:A:258:TYR:OH	2.04	0.57

Continued on next page...

Continued from previous page...

Atom-1	Atom-2	Interatomic distance (Å)	Clash overlap (Å)
1:A:154:VAL:HG12	1:A:158:LEU:HD22	1.89	0.53
1:B:154:VAL:HG12	1:B:158:LEU:HD22	1.91	0.53
1:A:50:ARG:HB2	1:A:53:LEU:HD22	1.92	0.50
1:A:113:ALA:HB2	2:C:59:TRP:CE2	2.46	0.50
2:C:95:ASP:O	2:C:97:GLU:N	2.45	0.50
1:B:144:LEU:HG	1:B:145:MET:HE2	1.95	0.49
1:A:245:ARG:HD3	6:A:378:HOH:O	2.14	0.47
1:A:191:ARG:HH22	2:C:95:ASP:CG	2.17	0.47
2:C:56:ASN:ND2	2:C:58:ASP:H	2.13	0.47
1:A:10:LYS:NZ	6:A:288:HOH:O	2.48	0.47
1:B:99:GLU:OE1	1:B:101:GLN:NE2	2.48	0.47
1:A:205:THR:OG1	1:A:243:GLN:HG2	2.16	0.46
1:A:9:LEU:HD11	1:A:36:MET:CE	2.46	0.46
1:B:48:TYR:OH	1:B:54:ARG:NH1	2.49	0.46
1:A:158:LEU:HA	1:A:162:THR:HG23	1.99	0.45
1:A:31:LEU:HD13	1:A:178:LEU:HD11	1.97	0.45
1:B:25:VAL:HG23	1:B:26:GLY:N	2.31	0.45
2:C:9:TYR:O	2:C:23:ASN:HB2	2.17	0.44
1:B:158:LEU:HB3	3:B:1:UNL:C12	2.48	0.44
1:B:191:ARG:NH1	2:D:97:GLU:OE1	2.51	0.44
1:A:52:TRP:CZ3	1:A:53:LEU:HD13	2.53	0.43
1:B:218:ARG:HD3	1:B:258:TYR:OH	2.19	0.42
1:A:54:ARG:NH2	1:A:59:LYS:HD3	2.34	0.42
1:B:10:LYS:CD	1:B:12:LEU:HD21	2.40	0.42
1:A:83:TYR:HB3	1:A:140:LYS:HE2	2.02	0.42
1:A:9:LEU:CD1	1:A:36:MET:HE2	2.50	0.41
1:B:114:TYR:CE2	1:B:115[B]:GLU:HG3	2.56	0.40
2:D:56:ASN:ND2	2:D:58:ASP:OD2	2.39	0.40

There are no symmetry-related clashes.

5.3 Torsion angles [i](#)

5.3.1 Protein backbone [i](#)

In the following table, the Percentiles column shows the percent Ramachandran outliers of the chain as a percentile score with respect to all X-ray entries followed by that with respect to entries of similar resolution.

The Analysed column shows the number of residues for which the backbone conformation was analysed, and the total number of residues.

Mol	Chain	Analysed	Favoured	Allowed	Outliers	Percentiles	
1	A	255/281 (91%)	250 (98%)	5 (2%)	0	100	100
1	B	260/281 (92%)	254 (98%)	6 (2%)	0	100	100
2	C	96/98 (98%)	92 (96%)	4 (4%)	0	100	100
2	D	96/98 (98%)	93 (97%)	3 (3%)	0	100	100
All	All	707/758 (93%)	689 (98%)	18 (2%)	0	100	100

There are no Ramachandran outliers to report.

5.3.2 Protein sidechains [i](#)

In the following table, the Percentiles column shows the percent sidechain outliers of the chain as a percentile score with respect to all X-ray entries followed by that with respect to entries of similar resolution.

The Analysed column shows the number of residues for which the sidechain conformation was analysed, and the total number of residues.

Mol	Chain	Analysed	Rotameric	Outliers	Percentiles	
1	A	229/245 (94%)	210 (92%)	19 (8%)	11	11
1	B	232/245 (95%)	209 (90%)	23 (10%)	8	7
2	C	85/86 (99%)	80 (94%)	5 (6%)	19	23
2	D	85/86 (99%)	79 (93%)	6 (7%)	14	16
All	All	631/662 (95%)	578 (92%)	53 (8%)	11	11

All (53) residues with a non-rotameric sidechain are listed below:

Mol	Chain	Res	Type
1	A	13	HIS
1	A	23	VAL
1	A	31	LEU
1	A	42	ARG
1	A	53	LEU
1	A	57	LEU
1	A	59	LYS
1	A	91	VAL
1	A	100	LEU
1	A	103	ASN
1	A	110	PHE
1	A	120	LEU
1	A	149	SER

Continued on next page...

Continued from previous page...

Mol	Chain	Res	Type
1	A	158	LEU
1	A	162	THR
1	A	178	LEU
1	A	191	ARG
1	A	192	THR
1	A	244	LEU
1	B	13	HIS
1	B	20	SER
1	B	23	VAL
1	B	25	VAL
1	B	28	LEU
1	B	31	LEU
1	B	42	ARG
1	B	53	LEU
1	B	57	LEU
1	B	64	VAL
1	B	91	VAL
1	B	100	LEU
1	B	110	PHE
1	B	115[A]	GLU
1	B	115[B]	GLU
1	B	120	LEU
1	B	149	SER
1	B	158	LEU
1	B	162	THR
1	B	178	LEU
1	B	192	THR
1	B	244	LEU
1	B	270	ARG
2	C	35	SER
2	C	56	ASN
2	C	58	ASP
2	C	69	PHE
2	C	76	THR
2	D	3	THR
2	D	33	LYS
2	D	56	ASN
2	D	69	PHE
2	D	76	THR
2	D	84	GLU

Sometimes sidechains can be flipped to improve hydrogen bonding and reduce clashes. All (5) such sidechains are listed below:

Mol	Chain	Res	Type
1	A	45	ASN
1	A	256	HIS
1	B	45	ASN
1	B	101	GLN
2	C	66	HIS

5.3.3 RNA [i](#)

There are no RNA molecules in this entry.

5.4 Non-standard residues in protein, DNA, RNA chains [i](#)

There are no non-standard protein/DNA/RNA residues in this entry.

5.5 Carbohydrates [i](#)

There are no monosaccharides in this entry.

5.6 Ligand geometry [i](#)

Of 12 ligands modelled in this entry, 4 are unknown and 2 are monoatomic - leaving 6 for Mogul analysis.

In the following table, the Counts columns list the number of bonds (or angles) for which Mogul statistics could be retrieved, the number of bonds (or angles) that are observed in the model and the number of bonds (or angles) that are defined in the Chemical Component Dictionary. The Link column lists molecule types, if any, to which the group is linked. The Z score for a bond length (or angle) is the number of standard deviations the observed value is removed from the expected value. A bond length (or angle) with $|Z| > 2$ is considered an outlier worth inspection. RMSZ is the root-mean-square of all Z scores of the bond lengths (or angles).

Mol	Type	Chain	Res	Link	Bond lengths			Bond angles		
					Counts	RMSZ	$\# Z > 2$	Counts	RMSZ	$\# Z > 2$
5	NAG	A	285	1	14,14,15	0.63	0	17,19,21	1.67	3 (17%)
5	NAG	B	284	1	14,14,15	0.68	0	17,19,21	1.79	3 (17%)
5	NAG	A	286	1	14,14,15	0.98	1 (7%)	17,19,21	2.25	3 (17%)
5	NAG	B	285	1	14,14,15	0.66	0	17,19,21	1.92	2 (11%)
5	NAG	B	286	1	14,14,15	0.80	0	17,19,21	1.62	2 (11%)
5	NAG	A	287	1	14,14,15	0.88	0	17,19,21	2.08	4 (23%)

In the following table, the Chirals column lists the number of chiral outliers, the number of chiral centers analysed, the number of these observed in the model and the number defined in the Chemical Component Dictionary. Similar counts are reported in the Torsion and Rings columns. '-' means no outliers of that kind were identified.

Mol	Type	Chain	Res	Link	Chirals	Torsions	Rings
5	NAG	A	285	1	-	2/6/23/26	0/1/1/1
5	NAG	B	284	1	-	2/6/23/26	0/1/1/1
5	NAG	A	286	1	-	0/6/23/26	0/1/1/1
5	NAG	B	285	1	-	2/6/23/26	0/1/1/1
5	NAG	B	286	1	-	1/6/23/26	0/1/1/1
5	NAG	A	287	1	-	2/6/23/26	0/1/1/1

All (1) bond length outliers are listed below:

Mol	Chain	Res	Type	Atoms	Z	Observed(Å)	Ideal(Å)
5	A	286	NAG	C1-C2	2.17	1.55	1.52

All (17) bond angle outliers are listed below:

Mol	Chain	Res	Type	Atoms	Z	Observed(°)	Ideal(°)
5	A	286	NAG	C1-O5-C5	7.48	122.33	112.19
5	B	285	NAG	C1-O5-C5	7.19	121.94	112.19
5	A	287	NAG	C1-O5-C5	6.07	120.42	112.19
5	B	284	NAG	C1-O5-C5	5.13	119.14	112.19
5	B	286	NAG	C1-O5-C5	5.03	119.01	112.19
5	A	285	NAG	C2-N2-C7	-4.03	117.17	122.90
5	B	284	NAG	O5-C1-C2	3.12	116.22	111.29
5	A	287	NAG	O5-C5-C6	3.09	112.04	107.20
5	A	287	NAG	C4-C3-C2	-2.67	107.10	111.02
5	A	287	NAG	O3-C3-C4	2.65	116.48	110.35
5	A	285	NAG	O5-C5-C6	2.47	111.07	107.20
5	A	285	NAG	C3-C4-C5	-2.29	106.15	110.24
5	B	286	NAG	O4-C4-C5	2.22	114.80	109.30
5	B	285	NAG	O4-C4-C5	2.17	114.70	109.30
5	A	286	NAG	O5-C5-C6	2.15	110.57	107.20
5	B	284	NAG	C4-C3-C2	-2.10	107.95	111.02
5	A	286	NAG	C1-C2-N2	2.01	113.92	110.49

There are no chirality outliers.

All (9) torsion outliers are listed below:

Mol	Chain	Res	Type	Atoms
5	B	284	NAG	O5-C5-C6-O6
5	A	285	NAG	O5-C5-C6-O6
5	A	285	NAG	C4-C5-C6-O6
5	B	284	NAG	C4-C5-C6-O6
5	A	287	NAG	C4-C5-C6-O6
5	B	285	NAG	C4-C5-C6-O6
5	B	285	NAG	O5-C5-C6-O6
5	A	287	NAG	O5-C5-C6-O6
5	B	286	NAG	C4-C5-C6-O6

There are no ring outliers.

No monomer is involved in short contacts.

5.7 Other polymers [i](#)

There are no such residues in this entry.

5.8 Polymer linkage issues [i](#)

There are no chain breaks in this entry.

6 Fit of model and data [i](#)

6.1 Protein, DNA and RNA chains [i](#)

In the following table, the column labelled ‘#RSRZ > 2’ contains the number (and percentage) of RSRZ outliers, followed by percent RSRZ outliers for the chain as percentile scores relative to all X-ray entries and entries of similar resolution. The OWAB column contains the minimum, median, 95th percentile and maximum values of the occupancy-weighted average B-factor per residue. The column labelled ‘Q < 0.9’ lists the number of (and percentage) of residues with an average occupancy less than 0.9.

Mol	Chain	Analysed	<RSRZ>	#RSRZ>2	OWAB(Å ²)	Q<0.9
1	A	264/281 (93%)	-0.01	6 (2%) 60 58	16, 28, 51, 73	0
1	B	267/281 (95%)	0.03	6 (2%) 62 59	17, 28, 55, 68	0
2	C	98/98 (100%)	-0.02	1 (1%) 82 81	14, 23, 36, 53	0
2	D	98/98 (100%)	0.06	0 100 100	15, 23, 36, 55	0
All	All	727/758 (95%)	0.01	13 (1%) 68 66	14, 27, 51, 73	0

All (13) RSRZ outliers are listed below:

Mol	Chain	Res	Type	RSRZ
1	B	253	GLN	3.5
1	B	254	ASP	3.4
1	B	21	THR	3.0
1	B	102	SER	2.7
1	A	256	HIS	2.7
1	A	268	GLY	2.7
1	A	41	SER	2.7
1	A	251	SER	2.6
2	C	98	PHE	2.4
1	A	252	PRO	2.4
1	B	86	VAL	2.2
1	A	42	ARG	2.1
1	B	251	SER	2.1

6.2 Non-standard residues in protein, DNA, RNA chains [i](#)

There are no non-standard protein/DNA/RNA residues in this entry.

6.3 Carbohydrates [i](#)

There are no monosaccharides in this entry.

6.4 Ligands [i](#)

In the following table, the Atoms column lists the number of modelled atoms in the group and the number defined in the chemical component dictionary. The B-factors column lists the minimum, median, 95th percentile and maximum values of B factors of atoms in the group. The column labelled 'Q<0.9' lists the number of atoms with occupancy less than 0.9.

Mol	Type	Chain	Res	Atoms	RSCC	RSR	B-factors(Å ²)	Q<0.9
5	NAG	B	284	14/15	0.55	0.32	73,80,83,85	0
5	NAG	A	287	14/15	0.63	0.16	54,59,62,62	0
5	NAG	B	285	14/15	0.64	0.20	64,72,77,79	0
5	NAG	A	286	14/15	0.66	0.18	50,56,60,63	0
5	NAG	A	285	14/15	0.68	0.21	56,61,66,66	0
5	NAG	B	286	14/15	0.78	0.16	49,54,59,61	0
3	UNL	A	283	16/-	0.83	0.23	45,50,61,63	0
3	UNL	B	283	16/-	0.85	0.19	48,49,53,54	0
3	UNL	B	1	45/-	0.88	0.19	22,35,44,47	0
3	UNL	A	1	45/-	0.88	0.19	21,33,41,48	0
4	CL	A	284	1/1	0.99	0.13	33,33,33,33	0
4	CL	D	99	1/1	0.99	0.20	32,32,32,32	0

6.5 Other polymers [i](#)

There are no such residues in this entry.