



Full wwPDB EM Validation Report ⓘ

Nov 13, 2022 – 03:50 PM EST

PDB ID : 7JTI
EMDB ID : EMD-22474
Title : Interphotoreceptor retinoid-binding protein (IRBP) in complex with a monoclonal antibody (F3F5 mAb5)
Authors : Sears, A.E.; Albiez, S.; Gulati, S.; Wang, B.; Kiser, P.; Kovacik, L.; Engel, A.; Stahlberg, H.; Palczewski, K.
Deposited on : 2020-08-17
Resolution : 7.40 Å (reported)
Based on initial model : 1J7X

This is a Full wwPDB EM Validation Report for a publicly released PDB entry.

We welcome your comments at validation@mail.wwpdb.org

A user guide is available at

<https://www.wwpdb.org/validation/2017/EMValidationReportHelp>

with specific help available everywhere you see the ⓘ symbol.

The types of validation reports are described at

<http://www.wwpdb.org/validation/2017/FAQs#types>.

The following versions of software and data (see [references ⓘ](#)) were used in the production of this report:

EMDB validation analysis : 0.0.1.dev43
MolProbity : 4.02b-467
Percentile statistics : 20191225.v01 (using entries in the PDB archive December 25th 2019)
MapQ : 1.9.9
Ideal geometry (proteins) : Engh & Huber (2001)
Ideal geometry (DNA, RNA) : Parkinson et al. (1996)
Validation Pipeline (wwPDB-VP) : 2.31.2

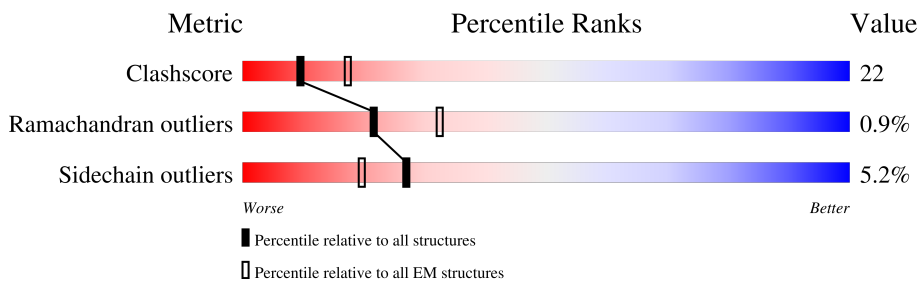
1 Overall quality at a glance i

The following experimental techniques were used to determine the structure:

ELECTRON MICROSCOPY

The reported resolution of this entry is 7.40 Å.

Percentile scores (ranging between 0-100) for global validation metrics of the entry are shown in the following graphic. The table shows the number of entries on which the scores are based.



Metric	Whole archive (#Entries)	EM structures (#Entries)
Clashscore	158937	4297
Ramachandran outliers	154571	4023
Sidechain outliers	154315	3826

The table below summarises the geometric issues observed across the polymeric chains and their fit to the map. The red, orange, yellow and green segments of the bar indicate the fraction of residues that contain outliers for ≥ 3 , 2, 1 and 0 types of geometric quality criteria respectively. A grey segment represents the fraction of residues that are not modelled. The numeric value for each fraction is indicated below the corresponding segment, with a dot representing fractions $\leq 5\%$. The upper red bar (where present) indicates the fraction of residues that have poor fit to the EM map (all-atom inclusion $< 40\%$). The numeric value is given above the bar.

Mol	Chain	Length	Quality of chain
1	L	210	<div style="display: flex; justify-content: space-between;"> 28% 66% 25% 8% </div>
2	H	221	<div style="display: flex; justify-content: space-between;"> 23% 61% 34% 5% </div>
3	A	303	<div style="display: flex; justify-content: space-between;"> 35% 74% 24% </div>
4	B	309	<div style="display: flex; justify-content: space-between;"> 77% 82% 16% </div>
5	C	300	<div style="display: flex; justify-content: space-between;"> 33% 88% 11% </div>
6	D	296	<div style="display: flex; justify-content: space-between;"> 64% 83% 15% </div>

2 Entry composition [i](#)

There are 6 unique types of molecules in this entry. The entry contains 12432 atoms, of which 0 are hydrogens and 0 are deuteriums.

In the tables below, the AltConf column contains the number of residues with at least one atom in alternate conformation and the Trace column contains the number of residues modelled with at most 2 atoms.

- Molecule 1 is a protein called mAb5 Fab light chain.

Mol	Chain	Residues	Atoms					AltConf	Trace
			Total	C	N	O	S		
1	L	210	1589	994	266	323	6	0	0

- Molecule 2 is a protein called mAb5 Fab heavy chain.

Mol	Chain	Residues	Atoms					AltConf	Trace
			Total	C	N	O	S		
2	H	221	1672	1065	270	328	9	0	0

- Molecule 3 is a protein called Retinol-binding protein 3.

Mol	Chain	Residues	Atoms					AltConf	Trace
			Total	C	N	O	S		
3	A	303	2346	1485	396	461	4	0	0

- Molecule 4 is a protein called Retinol-binding protein 3.

Mol	Chain	Residues	Atoms					AltConf	Trace
			Total	C	N	O	S		
4	B	309	2285	1465	367	447	6	0	0

- Molecule 5 is a protein called Retinol-binding protein 3.

Mol	Chain	Residues	Atoms					AltConf	Trace
			Total	C	N	O	S		
5	C	300	2278	1446	383	439	10	0	0

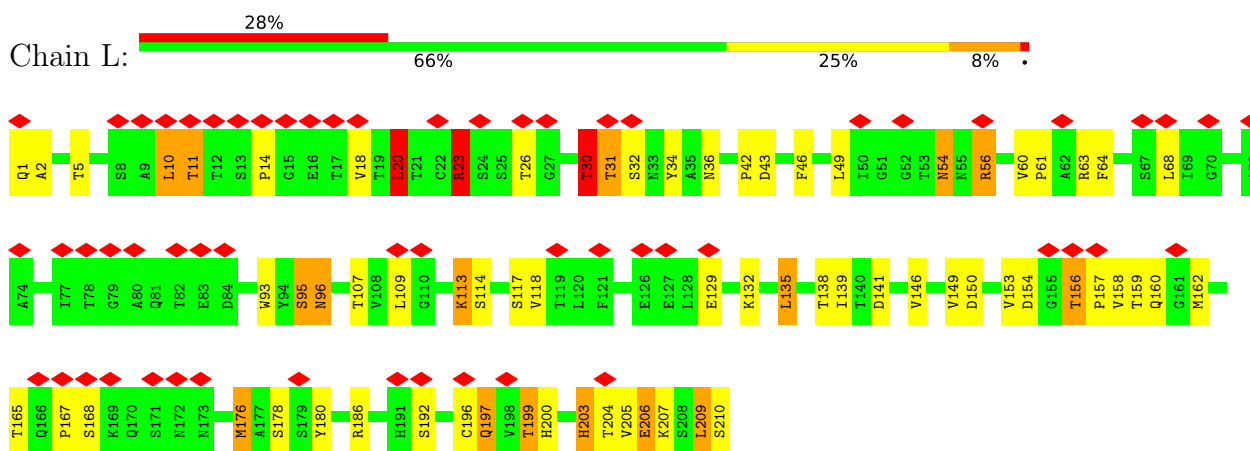
- Molecule 6 is a protein called Retinol-binding protein 3.

Mol	Chain	Residues	Atoms					AltConf	Trace
			Total	C	N	O	S		
6	D	296	2262	1435	375	442	10	0	0

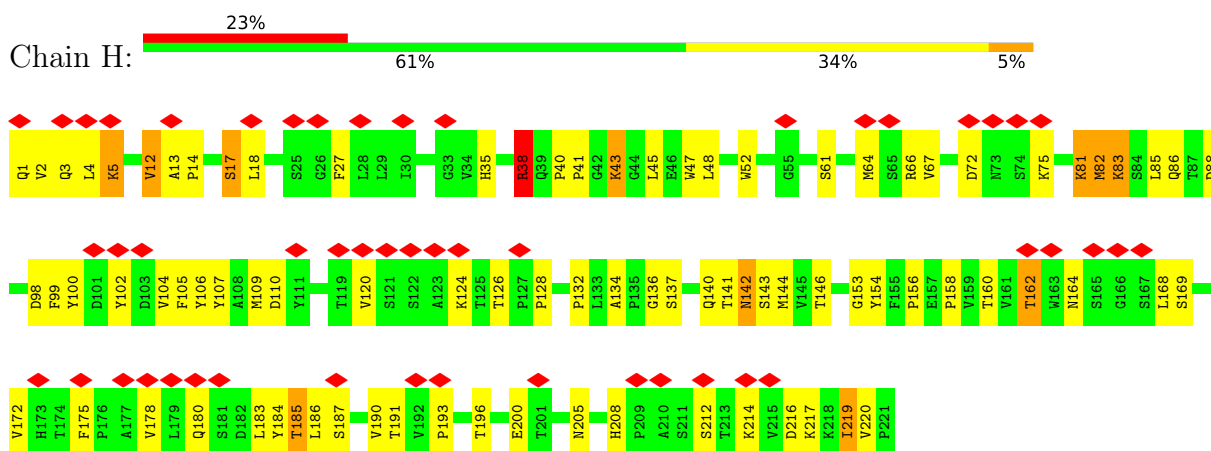
3 Residue-property plots

These plots are drawn for all protein, RNA, DNA and oligosaccharide chains in the entry. The first graphic for a chain summarises the proportions of the various outlier classes displayed in the second graphic. The second graphic shows the sequence view annotated by issues in geometry and atom inclusion in map density. Residues are color-coded according to the number of geometric quality criteria for which they contain at least one outlier: green = 0, yellow = 1, orange = 2 and red = 3 or more. A red diamond above a residue indicates a poor fit to the EM map for this residue (all-atom inclusion < 40%). Stretches of 2 or more consecutive residues without any outlier are shown as a green connector. Residues present in the sample, but not in the model, are shown in grey.

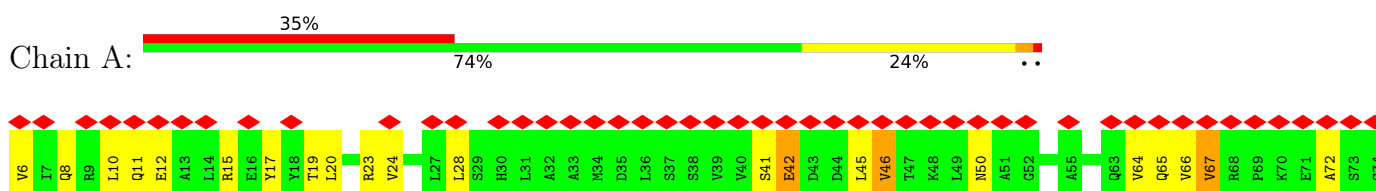
- Molecule 1: mAb5 Fab light chain

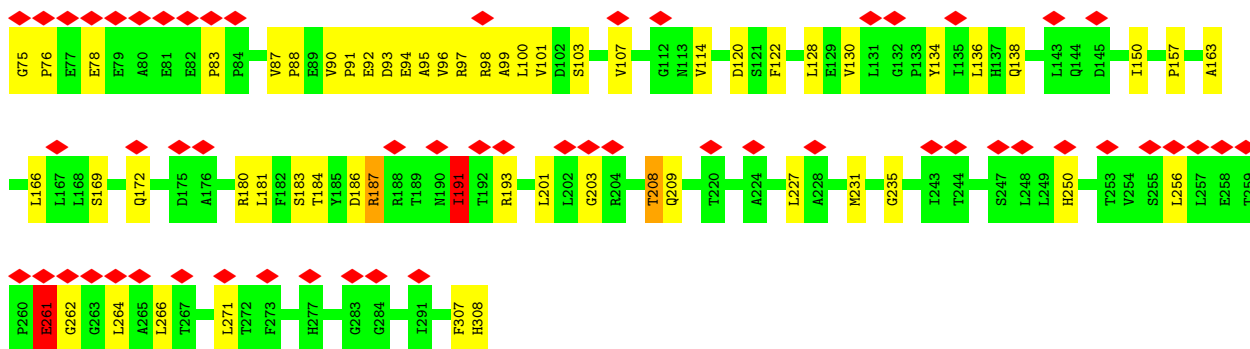


- Molecule 2: mAb5 Fab heavy chain

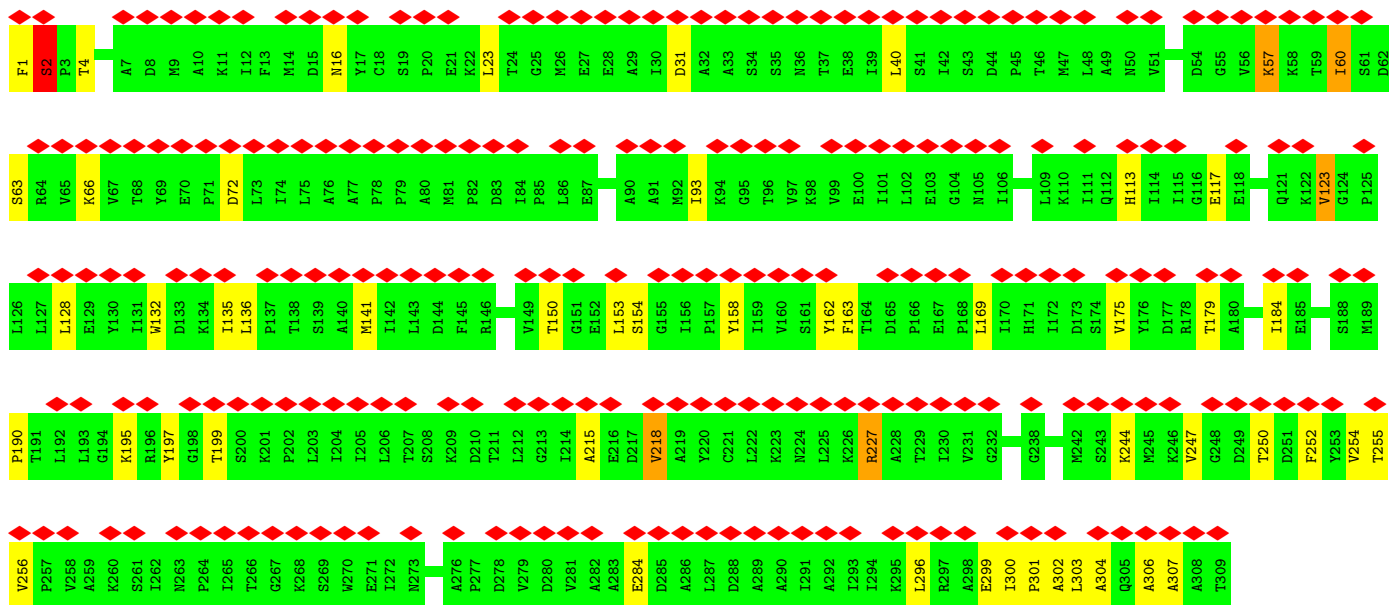
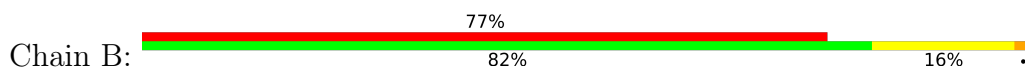


- Molecule 3: Retinol-binding protein 3

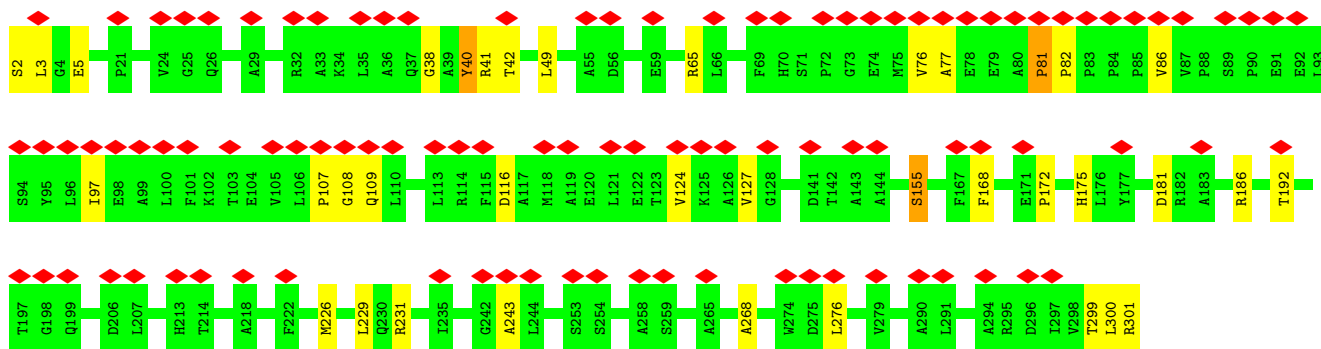
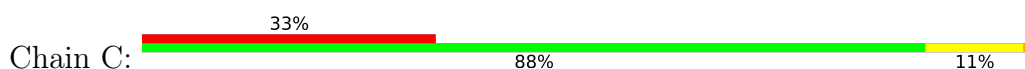




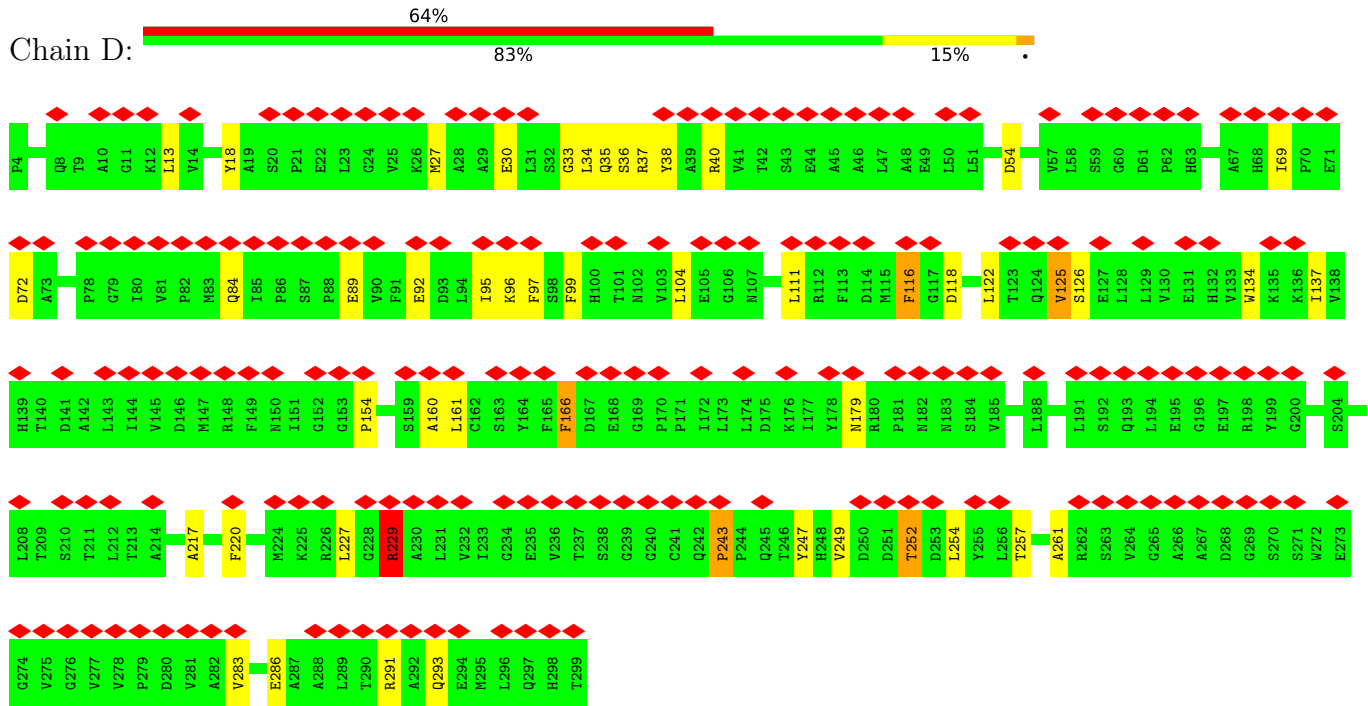
• Molecule 4: Retinol-binding protein 3



• Molecule 5: Retinol-binding protein 3



• Molecule 6: Retinol-binding protein 3



4 Experimental information

Property	Value	Source
EM reconstruction method	SINGLE PARTICLE	Depositor
Imposed symmetry	POINT, Not provided	
Number of particles used	17900	Depositor
Resolution determination method	FSC 0.5 CUT-OFF	Depositor
CTF correction method	PHASE FLIPPING AND AMPLITUDE CORRECTION	Depositor
Microscope	FEI TITAN KRIOS	Depositor
Voltage (kV)	300	Depositor
Electron dose ($e^-/\text{\AA}^2$)	80	Depositor
Minimum defocus (nm)	1000	Depositor
Maximum defocus (nm)	2200	Depositor
Magnification	60000	Depositor
Image detector	GATAN K2 QUANTUM (4k x 4k)	Depositor
Maximum map value	4.328	Depositor
Minimum map value	-1.114	Depositor
Average map value	0.004	Depositor
Map value standard deviation	0.060	Depositor
Recommended contour level	0.73	Depositor
Map size (\AA)	398.87997, 398.87997, 398.87997	wwPDB
Map dimensions	240, 240, 240	wwPDB
Map angles ($^\circ$)	90.0, 90.0, 90.0	wwPDB
Pixel spacing (\AA)	1.662, 1.662, 1.662	Depositor

5 Model quality i

5.1 Standard geometry i

The Z score for a bond length (or angle) is the number of standard deviations the observed value is removed from the expected value. A bond length (or angle) with $|Z| > 5$ is considered an outlier worth inspection. RMSZ is the root-mean-square of all Z scores of the bond lengths (or angles).

Mol	Chain	Bond lengths		Bond angles	
		RMSZ	# Z >5	RMSZ	# Z >5
1	L	0.80	0/1627	1.74	31/2224 (1.4%)
2	H	0.81	0/1718	1.67	23/2351 (1.0%)
3	A	0.78	0/2397	1.10	8/3277 (0.2%)
4	B	0.56	0/2326	0.63	0/3175
5	C	0.68	0/2329	1.04	5/3178 (0.2%)
6	D	0.73	0/2309	1.12	12/3143 (0.4%)
All	All	0.72	0/12706	1.22	79/17348 (0.5%)

Chiral center outliers are detected by calculating the chiral volume of a chiral center and verifying if the center is modelled as a planar moiety or with the opposite hand. A planarity outlier is detected by checking planarity of atoms in a peptide group, atoms in a mainchain group or atoms of a sidechain that are expected to be planar.

Mol	Chain	#Chirality outliers	#Planarity outliers
3	A	0	1
5	C	0	2
All	All	0	3

There are no bond length outliers.

All (79) bond angle outliers are listed below:

Mol	Chain	Res	Type	Atoms	Z	Observed(°)	Ideal(°)
1	L	56	ARG	NE-CZ-NH1	13.25	126.92	120.30
2	H	66	ARG	NE-CZ-NH2	-10.72	114.94	120.30
1	L	23	ARG	NE-CZ-NH1	10.34	125.47	120.30
1	L	23	ARG	NE-CZ-NH2	-9.33	115.63	120.30
6	D	27	MET	CG-SD-CE	-9.27	85.37	100.20
2	H	110	ASP	CB-CG-OD1	9.17	126.56	118.30
1	L	141	ASP	CB-CG-OD1	8.83	126.25	118.30
1	L	63	ARG	NE-CZ-NH1	8.69	124.64	120.30
1	L	154	ASP	CB-CG-OD1	8.22	125.69	118.30
1	L	186	ARG	NE-CZ-NH2	-8.19	116.20	120.30

Continued on next page...

Continued from previous page...

Mol	Chain	Res	Type	Atoms	Z	Observed(°)	Ideal(°)
5	C	231	ARG	NE-CZ-NH1	8.05	124.33	120.30
3	A	42	GLU	CB-CG-CD	-8.03	92.53	114.20
1	L	23	ARG	CD-NE-CZ	7.84	134.57	123.60
1	L	20	LEU	CA-CB-CG	7.61	132.81	115.30
6	D	229	ARG	NE-CZ-NH1	7.61	124.11	120.30
6	D	166	PHE	CB-CG-CD2	-7.50	115.55	120.80
2	H	98	ASP	CB-CG-OD1	7.47	125.02	118.30
1	L	150	ASP	CB-CG-OD1	7.34	124.90	118.30
1	L	2	ALA	N-CA-C	-7.12	91.76	111.00
1	L	30	THR	CA-CB-CG2	6.90	122.06	112.40
3	A	261	GLU	CA-C-O	6.80	134.38	120.10
1	L	135	LEU	CA-CB-CG	6.68	130.67	115.30
5	C	40	TYR	CB-CG-CD1	6.68	125.01	121.00
5	C	40	TYR	CB-CG-CD2	-6.65	117.01	121.00
1	L	43	ASP	CB-CA-C	6.64	123.67	110.40
2	H	38	ARG	NE-CZ-NH2	-6.61	116.99	120.30
2	H	38	ARG	CB-CG-CD	6.13	127.55	111.60
1	L	178	SER	N-CA-CB	-6.08	101.38	110.50
2	H	5	LYS	CB-CA-C	-6.04	98.32	110.40
2	H	98	ASP	CB-CG-OD2	-6.04	112.87	118.30
6	D	116	PHE	CB-CG-CD1	6.01	125.00	120.80
3	A	262	GLY	N-CA-C	5.95	127.97	113.10
2	H	220	VAL	C-N-CD	5.95	140.88	128.40
1	L	56	ARG	NH1-CZ-NH2	-5.85	112.97	119.40
1	L	186	ARG	CD-NE-CZ	5.84	131.78	123.60
1	L	42	PRO	C-N-CA	5.80	136.20	121.70
2	H	88	ASP	CB-CG-OD1	5.76	123.48	118.30
6	D	247	TYR	CB-CG-CD1	5.75	124.45	121.00
1	L	154	ASP	CB-CG-OD2	-5.72	113.15	118.30
2	H	187	SER	N-CA-CB	5.71	119.06	110.50
6	D	166	PHE	CB-CG-CD1	5.68	124.77	120.80
6	D	111	LEU	CB-CG-CD2	-5.67	101.36	111.00
5	C	231	ARG	NE-CZ-NH2	-5.67	117.46	120.30
6	D	97	PHE	CB-CG-CD1	5.64	124.75	120.80
1	L	168	SER	N-CA-CB	5.60	118.90	110.50
3	A	42	GLU	CB-CA-C	-5.60	99.21	110.40
1	L	63	ARG	CD-NE-CZ	5.58	131.41	123.60
2	H	5	LYS	CA-CB-CG	5.53	125.57	113.40
1	L	31	THR	CA-CB-CG2	5.52	120.13	112.40
2	H	136	GLY	N-CA-C	-5.50	99.34	113.10
1	L	26	THR	N-CA-CB	-5.50	99.86	110.30
2	H	66	ARG	CD-NE-CZ	5.49	131.28	123.60

Continued on next page...

Continued from previous page...

Mol	Chain	Res	Type	Atoms	Z	Observed(°)	Ideal(°)
2	H	185	THR	N-CA-CB	5.44	120.63	110.30
1	L	129	GLU	CG-CD-OE2	-5.39	107.51	118.30
1	L	2	ALA	CB-CA-C	5.37	118.16	110.10
2	H	109	MET	N-CA-C	-5.37	96.50	111.00
6	D	247	TYR	CB-CG-CD2	-5.37	117.78	121.00
2	H	86	GLN	N-CA-CB	5.34	120.21	110.60
2	H	184	TYR	CB-CG-CD1	-5.34	117.80	121.00
2	H	5	LYS	N-CA-CB	5.33	120.20	110.60
3	A	191	ILE	CA-CB-CG2	5.33	121.57	110.90
2	H	52	TRP	CH2-CZ2-CE2	-5.32	112.08	117.40
2	H	212	SER	N-CA-CB	5.31	118.46	110.50
3	A	17	TYR	CB-CG-CD1	-5.30	117.82	121.00
5	C	116	ASP	CB-CG-OD1	5.28	123.05	118.30
6	D	97	PHE	CB-CG-CD2	-5.27	117.11	120.80
6	D	18	TYR	CB-CG-CD2	-5.26	117.84	121.00
2	H	185	THR	CA-CB-CG2	5.15	119.61	112.40
1	L	30	THR	N-CA-CB	-5.15	100.52	110.30
1	L	209	LEU	CA-CB-CG	5.15	127.14	115.30
2	H	88	ASP	CB-CG-OD2	-5.10	113.71	118.30
3	A	208	THR	CA-CB-CG2	-5.10	105.26	112.40
3	A	46	VAL	CA-CB-CG2	-5.09	103.27	110.90
1	L	176	MET	CG-SD-CE	5.08	108.33	100.20
2	H	4	LEU	CA-CB-CG	5.05	126.92	115.30
1	L	42	PRO	CA-C-N	-5.04	106.10	117.20
1	L	36	ASN	CB-CG-OD1	-5.04	111.52	121.60
6	D	229	ARG	CD-NE-CZ	5.04	130.65	123.60
1	L	23	ARG	N-CA-CB	-5.03	101.54	110.60

There are no chirality outliers.

All (3) planarity outliers are listed below:

Mol	Chain	Res	Type	Group
3	A	261	GLU	Peptide
5	C	40	TYR	Sidechain
5	C	65	ARG	Sidechain

5.2 Too-close contacts [i](#)

In the following table, the Non-H and H(model) columns list the number of non-hydrogen atoms and hydrogen atoms in the chain respectively. The H(added) column lists the number of hydrogen atoms added and optimized by MolProbity. The Clashes column lists the number of clashes within

the asymmetric unit, whereas Symm-Clashes lists symmetry-related clashes.

Mol	Chain	Non-H	H(model)	H(added)	Clashes	Symm-Clashes
1	L	1589	0	1530	83	0
2	H	1672	0	1633	87	0
3	A	2346	0	2301	329	0
4	B	2285	0	2320	162	0
5	C	2278	0	2256	156	0
6	D	2262	0	2243	95	0
All	All	12432	0	12283	552	0

The all-atom clashscore is defined as the number of clashes found per 1000 atoms (including hydrogen atoms). The all-atom clashscore for this structure is 22.

All (552) close contacts within the same asymmetric unit are listed below, sorted by their clash magnitude.

Atom-1	Atom-2	Interatomic distance (Å)	Clash overlap (Å)
1:L:96:ASN:HA	3:A:103:SER:CB	1.29	1.60
3:A:308:HIS:CE1	5:C:3:LEU:HD13	1.30	1.58
3:A:15:ARG:CZ	4:B:306:ALA:HB3	1.23	1.57
3:A:235:GLY:CA	5:C:42:THR:HG23	1.33	1.54
5:C:301:ARG:CG	6:D:33:GLY:CA	1.79	1.52
5:C:301:ARG:CG	6:D:33:GLY:HA2	1.30	1.51
3:A:209:GLN:HA	5:C:41:ARG:CD	1.36	1.51
2:H:106:TYR:CD1	3:A:93:ASP:OD2	1.67	1.47
1:L:96:ASN:CA	3:A:103:SER:HB3	1.42	1.46
3:A:8:GLN:CB	4:B:296:LEU:HD23	1.46	1.43
3:A:8:GLN:HB2	4:B:296:LEU:CD2	1.47	1.41
3:A:12:GLU:N	4:B:303:LEU:HD21	1.28	1.40
3:A:15:ARG:HD2	4:B:307:ALA:N	1.07	1.39
3:A:235:GLY:HA3	5:C:42:THR:CG2	1.49	1.39
3:A:308:HIS:CE1	5:C:3:LEU:CD1	2.07	1.38
3:A:15:ARG:CZ	4:B:306:ALA:CB	2.01	1.37
3:A:308:HIS:HE1	5:C:3:LEU:CD1	1.36	1.36
5:C:301:ARG:HG2	6:D:33:GLY:CA	0.91	1.36
3:A:15:ARG:NH2	4:B:306:ALA:HB3	1.35	1.35
3:A:24:VAL:CG1	4:B:307:ALA:HB1	1.55	1.35
3:A:12:GLU:CA	4:B:303:LEU:HD11	1.58	1.31
3:A:8:GLN:N	4:B:296:LEU:HD21	1.41	1.30
3:A:12:GLU:HA	4:B:303:LEU:CD1	1.59	1.30
3:A:8:GLN:CB	4:B:296:LEU:CD2	2.04	1.29
5:C:301:ARG:OXT	6:D:33:GLY:CA	1.81	1.28
1:L:95:SER:O	3:A:103:SER:N	1.61	1.28

Continued on next page...

Continued from previous page...

Atom-1	Atom-2	Interatomic distance (Å)	Clash overlap (Å)
3:A:15:ARG:CD	4:B:307:ALA:N	1.97	1.28
1:L:96:ASN:CA	3:A:103:SER:CB	2.03	1.27
5:C:299:THR:O	6:D:38:TYR:CE2	1.86	1.26
5:C:107:PRO:CB	6:D:40:ARG:NH2	1.90	1.24
3:A:209:GLN:NE2	5:C:41:ARG:CZ	2.01	1.23
5:C:108:GLY:O	6:D:36:SER:HB2	1.04	1.22
5:C:299:THR:CG2	6:D:37:ARG:HE	1.45	1.22
1:L:95:SER:C	3:A:103:SER:N	1.89	1.21
5:C:108:GLY:O	6:D:36:SER:CB	1.88	1.20
5:C:301:ARG:HB3	6:D:33:GLY:O	1.39	1.19
5:C:300:LEU:HD23	6:D:38:TYR:OH	1.39	1.18
4:B:141:MET:HG2	4:B:197:TYR:CZ	1.80	1.17
3:A:235:GLY:O	5:C:42:THR:HA	1.45	1.17
2:H:106:TYR:HD1	3:A:93:ASP:OD2	0.84	1.16
3:A:12:GLU:CG	4:B:303:LEU:HD13	1.75	1.14
3:A:15:ARG:HG3	4:B:307:ALA:CA	1.76	1.14
3:A:24:VAL:HG11	4:B:307:ALA:HB1	1.20	1.14
2:H:106:TYR:HB3	3:A:95:ALA:HB3	1.30	1.14
3:A:209:GLN:CA	5:C:41:ARG:HD3	1.78	1.14
2:H:106:TYR:CB	3:A:95:ALA:HB3	1.78	1.13
3:A:15:ARG:HD2	4:B:306:ALA:C	1.68	1.13
5:C:299:THR:CG2	6:D:37:ARG:NE	2.00	1.13
2:H:106:TYR:HA	3:A:96:VAL:N	1.63	1.13
3:A:12:GLU:HG3	4:B:303:LEU:HD22	1.22	1.13
3:A:8:GLN:H	4:B:296:LEU:CD2	1.59	1.13
5:C:301:ARG:C	6:D:33:GLY:O	1.86	1.12
5:C:301:ARG:CB	6:D:33:GLY:O	1.97	1.12
1:L:95:SER:O	3:A:103:SER:CB	1.98	1.12
5:C:301:ARG:C	6:D:33:GLY:CA	2.18	1.11
5:C:301:ARG:HG2	6:D:33:GLY:HA3	1.14	1.11
3:A:209:GLN:CA	5:C:41:ARG:CD	2.26	1.11
5:C:301:ARG:C	6:D:33:GLY:C	2.08	1.10
5:C:301:ARG:OXT	6:D:33:GLY:HA3	1.43	1.09
3:A:15:ARG:HG3	4:B:307:ALA:HA	1.27	1.08
2:H:107:TYR:CG	3:A:96:VAL:HG13	1.89	1.08
3:A:209:GLN:HE21	5:C:41:ARG:CZ	1.62	1.08
5:C:107:PRO:HB2	6:D:40:ARG:NH2	1.50	1.07
5:C:301:ARG:C	6:D:33:GLY:HA3	1.75	1.07
3:A:8:GLN:OE1	4:B:300:ILE:HG13	1.52	1.07
3:A:11:GLN:C	4:B:303:LEU:HD21	1.77	1.05
3:A:12:GLU:N	4:B:303:LEU:CD2	2.18	1.05

Continued on next page...

Continued from previous page...

Atom-1	Atom-2	Interatomic distance (Å)	Clash overlap (Å)
4:B:141:MET:HG2	4:B:197:TYR:OH	1.57	1.04
2:H:107:TYR:CD1	3:A:96:VAL:HG13	1.93	1.04
3:A:15:ARG:HD2	4:B:307:ALA:H	1.22	1.03
5:C:299:THR:OG1	6:D:37:ARG:NE	1.77	1.03
2:H:104:VAL:O	3:A:93:ASP:CB	2.04	1.02
5:C:301:ARG:CA	6:D:33:GLY:O	2.08	1.02
3:A:15:ARG:HG3	4:B:307:ALA:CB	1.89	1.02
1:L:96:ASN:HB3	3:A:103:SER:CA	1.89	1.02
1:L:96:ASN:CB	3:A:103:SER:CB	2.37	1.01
3:A:308:HIS:NE2	5:C:3:LEU:HB2	1.76	1.01
5:C:301:ARG:OXT	6:D:33:GLY:N	1.92	1.01
2:H:106:TYR:HA	3:A:96:VAL:H	1.14	1.01
3:A:15:ARG:CG	4:B:307:ALA:HB2	1.90	1.00
5:C:301:ARG:CB	6:D:33:GLY:CA	2.39	1.00
3:A:15:ARG:NE	4:B:306:ALA:HB3	1.77	1.00
3:A:209:GLN:HA	5:C:41:ARG:HD2	1.43	1.00
1:L:96:ASN:HB3	3:A:103:SER:CB	1.91	0.99
2:H:104:VAL:O	3:A:93:ASP:HB2	1.58	0.99
3:A:208:THR:O	5:C:41:ARG:CD	2.11	0.99
4:B:141:MET:CG	4:B:197:TYR:CZ	2.44	0.99
3:A:308:HIS:HE1	5:C:3:LEU:CG	1.74	0.99
3:A:308:HIS:ND1	5:C:3:LEU:HD13	1.78	0.99
3:A:308:HIS:CE1	5:C:3:LEU:HB2	1.98	0.98
5:C:299:THR:HG23	6:D:37:ARG:HE	1.23	0.98
1:L:95:SER:O	3:A:103:SER:CA	2.11	0.97
3:A:15:ARG:NH2	4:B:306:ALA:CB	2.17	0.97
3:A:12:GLU:HG2	4:B:303:LEU:CD1	1.94	0.97
5:C:301:ARG:CB	6:D:33:GLY:C	2.33	0.97
3:A:8:GLN:OE1	4:B:300:ILE:N	1.97	0.97
2:H:104:VAL:O	3:A:93:ASP:OD2	1.83	0.97
1:L:96:ASN:CB	3:A:103:SER:HA	1.96	0.96
3:A:12:GLU:HG2	4:B:303:LEU:HD13	1.00	0.96
3:A:308:HIS:CE1	5:C:3:LEU:CG	2.48	0.96
1:L:96:ASN:HB3	3:A:103:SER:HB2	1.47	0.96
3:A:11:GLN:HB2	4:B:303:LEU:HD23	1.45	0.96
3:A:208:THR:O	5:C:41:ARG:HD2	1.63	0.95
5:C:301:ARG:CD	6:D:33:GLY:HA2	1.96	0.95
2:H:162:THR:HG22	2:H:205:ASN:HB2	1.49	0.95
1:L:96:ASN:HA	3:A:103:SER:HB2	1.44	0.95
1:L:96:ASN:CB	3:A:103:SER:HB2	1.97	0.94
5:C:301:ARG:O	6:D:33:GLY:O	1.85	0.94

Continued on next page...

Continued from previous page...

Atom-1	Atom-2	Interatomic distance (Å)	Clash overlap (Å)
3:A:8:GLN:CD	4:B:299:GLU:HB2	1.86	0.94
3:A:12:GLU:H	4:B:303:LEU:HD21	1.24	0.94
3:A:308:HIS:CE1	5:C:3:LEU:CB	2.49	0.94
3:A:208:THR:O	5:C:41:ARG:NE	1.94	0.94
5:C:300:LEU:HD23	6:D:38:TYR:HH	1.08	0.94
5:C:300:LEU:HD22	6:D:54:ASP:OD1	1.66	0.93
2:H:142:ASN:HD22	2:H:143:SER:H	1.13	0.93
4:B:250:THR:HG23	4:B:252:PHE:H	1.33	0.93
5:C:301:ARG:HB3	6:D:33:GLY:C	1.88	0.93
2:H:106:TYR:CD1	3:A:93:ASP:CG	2.42	0.93
5:C:301:ARG:CG	6:D:33:GLY:HA3	1.68	0.93
3:A:308:HIS:CE1	5:C:3:LEU:H	1.86	0.92
5:C:107:PRO:HB2	6:D:40:ARG:HH22	1.17	0.92
5:C:300:LEU:CD2	6:D:54:ASP:OD1	2.17	0.92
3:A:209:GLN:HA	5:C:41:ARG:HD3	0.94	0.92
3:A:6:VAL:N	4:B:296:LEU:HD11	1.84	0.92
3:A:8:GLN:CG	4:B:299:GLU:HB2	2.01	0.91
3:A:15:ARG:CG	4:B:307:ALA:CA	2.47	0.91
4:B:113:HIS:HD2	4:B:150:THR:HG23	1.36	0.91
3:A:12:GLU:HG3	4:B:303:LEU:CD2	2.00	0.91
5:C:301:ARG:CA	6:D:33:GLY:HA3	2.00	0.91
1:L:34:TYR:OH	3:A:98:ARG:N	2.03	0.91
5:C:301:ARG:OXT	6:D:30:GLU:O	1.88	0.90
3:A:8:GLN:HB3	4:B:296:LEU:HG	1.53	0.90
2:H:142:ASN:ND2	2:H:143:SER:H	1.70	0.90
1:L:96:ASN:CB	3:A:103:SER:CA	2.51	0.89
5:C:301:ARG:CZ	6:D:34:LEU:N	2.36	0.89
3:A:235:GLY:O	5:C:42:THR:CA	2.21	0.88
3:A:15:ARG:HD2	4:B:307:ALA:CA	2.03	0.88
2:H:40:PRO:HB2	2:H:43:LYS:HE2	1.56	0.87
3:A:8:GLN:N	4:B:296:LEU:CD2	2.27	0.87
3:A:15:ARG:CG	4:B:307:ALA:CB	2.51	0.87
1:L:95:SER:C	3:A:103:SER:CA	2.44	0.86
3:A:15:ARG:CD	4:B:307:ALA:CA	2.53	0.86
3:A:8:GLN:HG2	4:B:299:GLU:HB2	1.57	0.85
3:A:15:ARG:CG	4:B:307:ALA:HA	2.04	0.85
4:B:247:VAL:O	4:B:250:THR:HG22	1.75	0.85
5:C:299:THR:HA	6:D:35:GLN:CB	1.89	0.85
1:L:34:TYR:OH	3:A:94:GLU:O	1.95	0.85
3:A:208:THR:CB	5:C:41:ARG:CZ	2.54	0.85
5:C:299:THR:HG21	6:D:37:ARG:NE	1.61	0.85

Continued on next page...

Continued from previous page...

Atom-1	Atom-2	Interatomic distance (Å)	Clash overlap (Å)
2:H:106:TYR:CA	3:A:96:VAL:H	1.90	0.85
5:C:300:LEU:CD2	6:D:38:TYR:OH	2.25	0.84
5:C:301:ARG:CB	6:D:33:GLY:HA3	2.05	0.84
3:A:209:GLN:NE2	5:C:41:ARG:NH1	2.24	0.84
1:L:95:SER:HA	3:A:99:ALA:O	1.78	0.84
3:A:8:GLN:HB3	4:B:296:LEU:CD2	2.04	0.83
3:A:208:THR:HB	5:C:41:ARG:CZ	2.08	0.83
3:A:11:GLN:OE1	4:B:300:ILE:HG23	1.78	0.83
3:A:12:GLU:CG	4:B:303:LEU:CD1	2.52	0.83
3:A:209:GLN:CA	5:C:41:ARG:HD2	2.01	0.83
3:A:8:GLN:NE2	4:B:299:GLU:C	2.31	0.82
3:A:208:THR:OG1	5:C:41:ARG:NH1	2.11	0.82
1:L:96:ASN:N	3:A:103:SER:HB3	1.93	0.82
3:A:15:ARG:NH2	4:B:303:LEU:HA	1.95	0.82
3:A:208:THR:OG1	5:C:41:ARG:NH2	2.11	0.82
2:H:105:PHE:O	3:A:95:ALA:N	2.13	0.81
3:A:8:GLN:CA	4:B:296:LEU:HD21	2.10	0.81
1:L:95:SER:C	3:A:103:SER:HB3	2.01	0.81
3:A:24:VAL:HG12	4:B:307:ALA:HB1	1.59	0.81
5:C:301:ARG:HH12	6:D:34:LEU:HB3	1.44	0.81
3:A:209:GLN:HE21	5:C:41:ARG:NH1	1.77	0.81
3:A:24:VAL:HG11	4:B:307:ALA:CB	2.07	0.81
3:A:8:GLN:OE1	4:B:296:LEU:O	1.97	0.81
3:A:8:GLN:CD	4:B:299:GLU:CB	2.49	0.80
4:B:93:ILE:HD12	4:B:123:VAL:HG21	1.64	0.80
1:L:96:ASN:HB3	3:A:103:SER:HA	1.56	0.80
3:A:8:GLN:HB3	4:B:296:LEU:CG	2.11	0.80
4:B:175:VAL:HG23	4:B:184:ILE:HB	1.64	0.80
3:A:11:GLN:HB2	4:B:303:LEU:CD2	2.12	0.80
5:C:301:ARG:NH1	6:D:34:LEU:HB3	1.97	0.80
4:B:16:ASN:OD1	4:B:179:THR:HG22	1.83	0.79
2:H:107:TYR:CD2	3:A:96:VAL:HG13	2.17	0.79
4:B:163:PHE:HB3	4:B:227:ARG:NH1	1.98	0.79
3:A:11:GLN:CB	4:B:303:LEU:HD23	2.11	0.79
5:C:301:ARG:NH1	6:D:34:LEU:O	2.14	0.79
3:A:235:GLY:CA	5:C:42:THR:CG2	2.29	0.79
4:B:153:LEU:HD21	4:B:175:VAL:HG21	1.64	0.79
2:H:104:VAL:O	3:A:93:ASP:CG	2.20	0.79
1:L:165:THR:HG22	2:H:178:VAL:HG13	1.65	0.79
3:A:15:ARG:HD3	4:B:303:LEU:O	1.83	0.78
4:B:117:GLU:CG	4:B:158:TYR:HE1	1.96	0.78

Continued on next page...

Continued from previous page...

Atom-1	Atom-2	Interatomic distance (Å)	Clash overlap (Å)
4:B:117:GLU:HG2	4:B:158:TYR:HE1	1.48	0.78
3:A:12:GLU:CA	4:B:303:LEU:CD1	2.37	0.77
4:B:113:HIS:CD2	4:B:150:THR:HG23	2.19	0.77
3:A:8:GLN:CA	4:B:296:LEU:CD2	2.62	0.77
3:A:235:GLY:HA2	5:C:42:THR:HG23	1.62	0.77
2:H:105:PHE:CG	3:A:97:ARG:HG3	2.19	0.77
1:L:34:TYR:CE2	3:A:99:ALA:HB2	2.20	0.77
1:L:34:TYR:CD2	3:A:99:ALA:HB2	2.19	0.76
5:C:301:ARG:CG	6:D:33:GLY:C	2.54	0.76
1:L:34:TYR:HE2	3:A:99:ALA:H	1.32	0.76
3:A:8:GLN:HE22	4:B:299:GLU:C	1.88	0.76
3:A:15:ARG:CB	4:B:307:ALA:HB2	2.16	0.76
4:B:175:VAL:CG2	4:B:184:ILE:HB	2.15	0.76
4:B:141:MET:HG2	4:B:197:TYR:CE2	2.21	0.76
2:H:105:PHE:HD2	3:A:91:PRO:C	1.87	0.75
3:A:15:ARG:NH2	4:B:303:LEU:O	2.17	0.75
2:H:107:TYR:CD2	3:A:99:ALA:HB3	2.21	0.75
3:A:8:GLN:OE1	4:B:300:ILE:CG1	2.35	0.74
1:L:96:ASN:CA	3:A:103:SER:CA	2.66	0.74
3:A:15:ARG:NE	4:B:306:ALA:CB	2.43	0.74
3:A:208:THR:CB	5:C:41:ARG:NH1	2.51	0.74
2:H:105:PHE:O	3:A:94:GLU:N	2.09	0.74
3:A:307:PHE:O	5:C:2:SER:HB3	1.88	0.74
3:A:209:GLN:HE21	5:C:41:ARG:NH2	1.86	0.73
5:C:300:LEU:CD2	6:D:38:TYR:HH	1.95	0.73
5:C:299:THR:O	6:D:38:TYR:CD2	2.42	0.73
3:A:8:GLN:CB	4:B:296:LEU:CG	2.65	0.73
1:L:34:TYR:CE2	3:A:99:ALA:CB	2.72	0.72
3:A:11:GLN:CB	4:B:303:LEU:CD2	2.68	0.72
1:L:34:TYR:HE2	3:A:99:ALA:CB	2.02	0.72
1:L:95:SER:O	3:A:103:SER:HB3	1.73	0.72
1:L:95:SER:C	3:A:103:SER:CB	2.56	0.72
3:A:208:THR:HB	5:C:41:ARG:NH1	2.04	0.72
6:D:252:THR:HG23	6:D:254:LEU:H	1.54	0.72
1:L:34:TYR:HH	3:A:98:ARG:H	1.37	0.71
3:A:15:ARG:CD	4:B:307:ALA:HB2	2.20	0.71
3:A:8:GLN:H	4:B:296:LEU:HD21	0.66	0.70
2:H:107:TYR:HD2	3:A:99:ALA:HB3	1.56	0.69
3:A:6:VAL:N	4:B:296:LEU:CD1	2.55	0.69
2:H:35:HIS:HD2	2:H:47:TRP:HE1	1.41	0.69
2:H:100:TYR:CB	3:A:96:VAL:HG11	2.22	0.69

Continued on next page...

Continued from previous page...

Atom-1	Atom-2	Interatomic distance (Å)	Clash overlap (Å)
2:H:193:PRO:O	2:H:196:THR:HB	1.93	0.69
4:B:141:MET:CG	4:B:197:TYR:CE2	2.76	0.69
4:B:227:ARG:CG	4:B:227:ARG:HH11	2.05	0.68
3:A:24:VAL:CG1	4:B:307:ALA:CB	2.52	0.68
1:L:93:TRP:CZ2	3:A:99:ALA:O	2.34	0.68
2:H:105:PHE:CD2	3:A:91:PRO:C	2.62	0.68
2:H:106:TYR:HB2	3:A:95:ALA:HB3	1.73	0.68
3:A:15:ARG:HB2	4:B:307:ALA:HB2	1.74	0.68
3:A:28:LEU:CD1	4:B:304:ALA:HA	2.24	0.68
3:A:50:ASN:HD21	3:A:64:VAL:H	1.42	0.68
3:A:6:VAL:HG11	3:A:45:LEU:HD21	1.77	0.67
4:B:132:TRP:CE3	4:B:135:ILE:HD11	2.29	0.67
2:H:107:TYR:CD1	3:A:96:VAL:CG1	2.74	0.67
2:H:107:TYR:CE1	3:A:96:VAL:HG13	2.29	0.67
4:B:93:ILE:CD1	4:B:123:VAL:HG21	2.24	0.67
3:A:6:VAL:HG13	3:A:256:LEU:HD13	1.77	0.66
3:A:308:HIS:CG	5:C:3:LEU:H	2.12	0.66
4:B:113:HIS:HD2	4:B:150:THR:CG2	2.07	0.66
2:H:35:HIS:CD2	2:H:47:TRP:HE1	2.13	0.66
1:L:113:LYS:O	1:L:113:LYS:HE2	1.96	0.66
3:A:67:VAL:HA	3:A:76:PRO:HD3	1.75	0.66
5:C:3:LEU:HG	5:C:49:LEU:HD21	1.76	0.66
3:A:15:ARG:CD	4:B:307:ALA:CB	2.74	0.66
5:C:299:THR:HA	6:D:35:GLN:HB3	1.76	0.66
3:A:235:GLY:C	5:C:42:THR:HG23	2.14	0.66
5:C:107:PRO:HB3	6:D:40:ARG:NH2	2.05	0.66
1:L:95:SER:O	3:A:99:ALA:O	2.14	0.65
3:A:208:THR:OG1	5:C:41:ARG:CZ	2.43	0.65
3:A:15:ARG:CZ	4:B:306:ALA:HB1	2.21	0.65
3:A:308:HIS:CE1	5:C:3:LEU:N	2.64	0.65
5:C:301:ARG:O	6:D:33:GLY:C	2.31	0.65
3:A:28:LEU:HD12	4:B:304:ALA:HA	1.78	0.65
1:L:96:ASN:OD1	3:A:103:SER:HA	1.96	0.65
2:H:105:PHE:HD2	3:A:92:GLU:N	1.95	0.65
4:B:117:GLU:HG2	4:B:158:TYR:CE1	2.31	0.64
5:C:299:THR:O	6:D:38:TYR:CZ	2.46	0.64
2:H:106:TYR:HD1	3:A:93:ASP:CG	1.82	0.64
3:A:28:LEU:HD12	4:B:304:ALA:CB	2.27	0.64
5:C:97:ILE:HD11	5:C:127:VAL:HB	1.79	0.64
5:C:300:LEU:HD23	6:D:54:ASP:OD1	1.98	0.63
2:H:106:TYR:HB3	3:A:95:ALA:CB	2.18	0.63

Continued on next page...

Continued from previous page...

Atom-1	Atom-2	Interatomic distance (Å)	Clash overlap (Å)
3:A:180:ARG:HH11	3:A:183:SER:HB2	1.63	0.63
2:H:38:ARG:HG2	2:H:48:LEU:HD21	1.80	0.63
3:A:15:ARG:HH21	4:B:303:LEU:C	2.02	0.63
3:A:15:ARG:NH1	4:B:306:ALA:CB	2.60	0.63
1:L:199:THR:HG23	1:L:204:THR:OG1	1.99	0.63
2:H:83:LYS:HB2	2:H:83:LYS:NZ	2.14	0.62
3:A:28:LEU:HD12	4:B:304:ALA:HB2	1.80	0.62
3:A:235:GLY:HA3	5:C:42:THR:HG23	0.63	0.62
3:A:28:LEU:HD12	4:B:304:ALA:CA	2.30	0.62
3:A:172:GLN:HE22	3:A:181:LEU:HD21	1.64	0.62
5:C:301:ARG:NH1	6:D:34:LEU:CA	2.63	0.62
3:A:15:ARG:NH2	4:B:303:LEU:CA	2.61	0.61
1:L:96:ASN:CG	3:A:103:SER:HA	2.20	0.61
3:A:8:GLN:NE2	4:B:299:GLU:HB3	2.15	0.61
3:A:6:VAL:CG2	3:A:261:GLU:HG3	2.31	0.61
2:H:107:TYR:CE1	3:A:96:VAL:CG1	2.84	0.61
1:L:34:TYR:CE2	3:A:96:VAL:CA	2.77	0.61
1:L:192:SER:O	1:L:210:SER:HA	2.01	0.61
5:C:109:GLN:N	6:D:40:ARG:HH11	1.98	0.60
1:L:95:SER:CA	3:A:99:ALA:O	2.50	0.60
4:B:254:VAL:HG12	4:B:256:VAL:HG23	1.82	0.60
5:C:301:ARG:NH1	6:D:34:LEU:N	2.49	0.60
4:B:1:PHE:O	4:B:2:SER:CB	2.50	0.59
5:C:301:ARG:CA	6:D:33:GLY:CA	2.70	0.59
3:A:209:GLN:NE2	5:C:41:ARG:NH2	2.46	0.59
5:C:301:ARG:NH1	6:D:34:LEU:CB	2.66	0.59
5:C:301:ARG:CZ	6:D:34:LEU:H	2.15	0.59
2:H:100:TYR:CD1	3:A:91:PRO:HB3	2.37	0.58
3:A:8:GLN:CG	4:B:299:GLU:CB	2.79	0.58
3:A:8:GLN:NE2	4:B:299:GLU:CB	2.65	0.58
1:L:34:TYR:CE2	3:A:96:VAL:HA	2.39	0.58
1:L:118:VAL:HG12	1:L:207:LYS:HG3	1.85	0.58
4:B:1:PHE:O	4:B:2:SER:HB2	2.04	0.58
4:B:117:GLU:CG	4:B:158:TYR:CE1	2.85	0.58
1:L:96:ASN:HA	3:A:103:SER:HB3	0.65	0.57
3:A:308:HIS:HE1	5:C:3:LEU:CD2	2.17	0.57
6:D:95:ILE:HD12	6:D:125:VAL:HG21	1.86	0.57
2:H:2:VAL:HG13	2:H:27:PHE:CD1	2.39	0.57
3:A:15:ARG:CD	4:B:307:ALA:H	1.90	0.57
4:B:141:MET:HG3	4:B:197:TYR:CZ	2.35	0.57
3:A:308:HIS:ND1	5:C:2:SER:OG	2.29	0.57

Continued on next page...

Continued from previous page...

Atom-1	Atom-2	Interatomic distance (Å)	Clash overlap (Å)
3:A:12:GLU:CB	4:B:303:LEU:CD1	2.83	0.57
1:L:96:ASN:N	3:A:103:SER:CA	2.68	0.56
2:H:18:LEU:O	2:H:81:LYS:HD2	2.05	0.56
3:A:191:ILE:HG22	3:A:193:ARG:H	1.70	0.56
3:A:307:PHE:O	5:C:2:SER:CB	2.52	0.56
3:A:12:GLU:H	4:B:303:LEU:CD2	2.04	0.56
4:B:117:GLU:HG3	4:B:158:TYR:HE1	1.69	0.56
1:L:149:VAL:HA	1:L:197:GLN:O	2.05	0.56
3:A:307:PHE:C	5:C:2:SER:HB3	2.26	0.56
2:H:67:VAL:HG12	2:H:82:MET:HG3	1.89	0.55
3:A:307:PHE:O	5:C:5:GLU:OE1	2.25	0.55
3:A:8:GLN:NE2	4:B:299:GLU:O	2.39	0.55
4:B:23:LEU:HD22	4:B:60:ILE:HD11	1.89	0.55
4:B:227:ARG:HH11	4:B:227:ARG:HG3	1.71	0.55
3:A:184:THR:HB	3:A:271:LEU:HD11	1.89	0.55
1:L:10:LEU:HD23	1:L:20:LEU:HD22	1.89	0.55
3:A:308:HIS:HE2	5:C:3:LEU:HB2	1.66	0.55
3:A:8:GLN:CD	4:B:299:GLU:C	2.65	0.55
2:H:164:ASN:ND2	2:H:168:LEU:HD22	2.21	0.55
6:D:96:LYS:HA	6:D:99:PHE:CE2	2.42	0.54
3:A:8:GLN:CD	4:B:300:ILE:N	2.60	0.54
3:A:10:LEU:HD13	3:A:266:LEU:HD22	1.90	0.54
3:A:114:VAL:CG1	3:A:150:ILE:HD13	2.38	0.54
3:A:209:GLN:NE2	5:C:41:ARG:NE	2.53	0.54
3:A:10:LEU:CD1	3:A:266:LEU:HD22	2.36	0.54
3:A:208:THR:HG1	5:C:41:ARG:HH12	1.52	0.54
1:L:96:ASN:N	3:A:103:SER:CB	2.63	0.54
4:B:169:LEU:CD2	4:B:190:PRO:HD3	2.38	0.54
5:C:301:ARG:HG2	6:D:33:GLY:HA2	0.54	0.54
1:L:32:SER:HB2	3:A:98:ARG:NH2	2.07	0.53
2:H:100:TYR:HB2	3:A:96:VAL:HG11	1.88	0.53
4:B:215:ALA:HA	4:B:218:VAL:HG12	1.89	0.53
5:C:301:ARG:NH2	6:D:33:GLY:HA2	2.22	0.53
4:B:141:MET:CG	4:B:197:TYR:OH	2.44	0.53
5:C:301:ARG:NH2	6:D:34:LEU:H	2.06	0.53
3:A:12:GLU:CG	4:B:303:LEU:HD22	2.15	0.53
1:L:95:SER:O	3:A:103:SER:OG	2.26	0.53
3:A:308:HIS:OXT	5:C:3:LEU:N	2.30	0.53
2:H:107:TYR:HD2	3:A:99:ALA:CB	2.21	0.53
5:C:181:ASP:H	5:C:186:ARG:HB3	1.73	0.53
5:C:76:VAL:HG13	5:C:77:ALA:H	1.73	0.53

Continued on next page...

Continued from previous page...

Atom-1	Atom-2	Interatomic distance (Å)	Clash overlap (Å)
1:L:1:GLN:HA	1:L:1:GLN:OE1	2.08	0.53
4:B:23:LEU:CD2	4:B:60:ILE:HD11	2.38	0.53
3:A:6:VAL:HG13	3:A:256:LEU:CD1	2.39	0.52
1:L:200:HIS:HB3	1:L:203:HIS:CE1	2.45	0.52
3:A:67:VAL:HG12	3:A:75:GLY:HA3	1.91	0.52
4:B:141:MET:HG2	4:B:197:TYR:HH	1.69	0.52
5:C:301:ARG:NH2	6:D:33:GLY:CA	2.72	0.52
2:H:107:TYR:CE2	3:A:96:VAL:O	2.62	0.52
5:C:107:PRO:CB	6:D:40:ARG:HH21	2.13	0.52
6:D:166:PHE:CZ	6:D:227:LEU:HD13	2.44	0.52
4:B:66:LYS:HB3	4:B:255:THR:OG1	2.10	0.52
4:B:141:MET:HG3	4:B:197:TYR:CE2	2.45	0.52
3:A:15:ARG:NH2	4:B:303:LEU:C	2.63	0.52
3:A:11:GLN:C	4:B:303:LEU:CD2	2.63	0.51
2:H:100:TYR:HB2	3:A:96:VAL:HG21	1.93	0.51
1:L:197:GLN:HG2	1:L:204:THR:HG23	1.92	0.51
3:A:209:GLN:C	5:C:41:ARG:CD	2.78	0.51
3:A:8:GLN:HE22	4:B:300:ILE:HA	1.76	0.51
3:A:11:GLN:CA	4:B:303:LEU:HD21	2.39	0.51
1:L:46:PHE:CE1	2:H:45:LEU:HD11	2.46	0.51
5:C:243:ALA:HB3	5:C:276:LEU:HD13	1.92	0.51
3:A:209:GLN:HA	5:C:41:ARG:NE	2.16	0.50
2:H:144:MET:HB3	2:H:191:THR:HG22	1.93	0.50
3:A:8:GLN:CB	4:B:296:LEU:HD21	2.09	0.50
3:A:208:THR:C	5:C:41:ARG:HD2	2.30	0.50
1:L:167:PRO:HA	1:L:176:MET:O	2.10	0.50
2:H:107:TYR:OH	3:A:100:LEU:HB2	2.12	0.50
5:C:168:PHE:CZ	5:C:229:LEU:HD13	2.47	0.50
3:A:12:GLU:CG	4:B:303:LEU:CD2	2.80	0.50
1:L:34:TYR:HE2	3:A:99:ALA:N	2.06	0.50
3:A:209:GLN:C	5:C:41:ARG:HD2	2.32	0.50
1:L:56:ARG:HD3	1:L:64:PHE:O	2.11	0.50
2:H:132:PRO:HD3	2:H:217:LYS:HE2	1.93	0.50
3:A:15:ARG:HD3	4:B:307:ALA:HB2	1.93	0.50
2:H:107:TYR:CZ	3:A:96:VAL:CG1	2.95	0.49
1:L:153:VAL:HG23	1:L:158:VAL:HG22	1.93	0.49
5:C:301:ARG:CZ	6:D:33:GLY:C	2.81	0.49
3:A:42:GLU:OE2	3:A:66:VAL:HG21	2.12	0.49
3:A:8:GLN:OE1	4:B:300:ILE:CA	2.60	0.49
3:A:15:ARG:CD	4:B:306:ALA:HB3	2.40	0.49
1:L:5:THR:OG1	1:L:23:ARG:NE	2.46	0.49

Continued on next page...

Continued from previous page...

Atom-1	Atom-2	Interatomic distance (Å)	Clash overlap (Å)
6:D:122:LEU:HD13	6:D:160:ALA:CB	2.42	0.49
3:A:12:GLU:CB	4:B:303:LEU:HD13	2.39	0.49
3:A:67:VAL:HG21	3:A:72:ALA:HA	1.95	0.49
3:A:20:LEU:HD13	3:A:23:ARG:CZ	2.42	0.49
1:L:30:THR:HG22	1:L:32:SER:HB2	1.96	0.48
2:H:1:GLN:OE1	2:H:1:GLN:N	2.32	0.48
2:H:100:TYR:CD1	3:A:91:PRO:CB	2.96	0.48
3:A:169:SER:HB2	3:A:201:LEU:HD11	1.94	0.48
1:L:34:TYR:HD2	3:A:99:ALA:HB2	1.75	0.48
3:A:11:GLN:CB	4:B:303:LEU:HD21	2.44	0.48
3:A:235:GLY:O	5:C:42:THR:CB	2.61	0.48
4:B:169:LEU:HD22	4:B:190:PRO:HD3	1.95	0.48
5:C:301:ARG:HH21	6:D:33:GLY:HA2	1.78	0.48
2:H:107:TYR:CE2	3:A:99:ALA:HB3	2.49	0.48
5:C:301:ARG:C	6:D:30:GLU:O	2.51	0.48
2:H:107:TYR:CE2	3:A:96:VAL:HG13	2.48	0.48
6:D:179:ASN:HA	6:D:261:ALA:HB2	1.95	0.48
3:A:66:VAL:HB	3:A:264:LEU:HD23	1.96	0.48
5:C:175:HIS:CD2	5:C:268:ALA:CB	2.96	0.48
6:D:229:ARG:HG3	6:D:229:ARG:HH11	1.79	0.48
2:H:106:TYR:CG	3:A:93:ASP:CG	2.79	0.48
4:B:158:TYR:O	4:B:162:TYR:HD2	1.96	0.47
1:L:32:SER:CB	3:A:98:ARG:NH2	2.70	0.47
5:C:301:ARG:NH1	6:D:34:LEU:C	2.67	0.47
1:L:117:SER:O	1:L:139:ILE:HA	2.14	0.47
2:H:107:TYR:CD2	3:A:99:ALA:CB	2.96	0.47
3:A:65:GLN:HB3	3:A:76:PRO:HG2	1.95	0.47
5:C:299:THR:HA	6:D:35:GLN:HB2	1.86	0.47
3:A:46:VAL:CG2	3:A:264:LEU:HD21	2.44	0.47
6:D:249:VAL:O	6:D:252:THR:HG22	2.15	0.47
1:L:153:VAL:HG23	1:L:158:VAL:CG2	2.45	0.47
3:A:15:ARG:CD	4:B:303:LEU:O	2.60	0.47
2:H:172:VAL:HG22	2:H:190:VAL:HG23	1.96	0.47
3:A:19:THR:HA	3:A:187:ARG:HB2	1.97	0.47
3:A:172:GLN:HA	3:A:208:THR:HG22	1.96	0.47
5:C:107:PRO:HB2	6:D:40:ARG:HH21	1.66	0.47
5:C:301:ARG:NH2	6:D:34:LEU:N	2.61	0.47
2:H:164:ASN:HD22	2:H:168:LEU:HD22	1.80	0.47
1:L:60:VAL:HA	1:L:61:PRO:HD3	1.83	0.46
2:H:100:TYR:CB	3:A:96:VAL:HG21	2.45	0.46
2:H:107:TYR:CZ	3:A:96:VAL:HG13	2.50	0.46

Continued on next page...

Continued from previous page...

Atom-1	Atom-2	Interatomic distance (Å)	Clash overlap (Å)
3:A:15:ARG:CD	4:B:306:ALA:C	2.60	0.46
5:C:175:HIS:CD2	5:C:268:ALA:HB1	2.50	0.46
3:A:308:HIS:CE1	5:C:3:LEU:HD22	2.51	0.46
6:D:95:ILE:CD1	6:D:125:VAL:HG21	2.46	0.46
3:A:90:VAL:HG11	3:A:130:VAL:HG11	1.98	0.46
2:H:104:VAL:C	3:A:93:ASP:CG	2.68	0.46
3:A:87:VAL:CG1	3:A:88:PRO:HD3	2.45	0.46
3:A:19:THR:HG23	3:A:20:LEU:HG	1.97	0.46
6:D:134:TRP:CE3	6:D:137:ILE:HD11	2.50	0.46
3:A:308:HIS:CE1	5:C:3:LEU:CD2	2.95	0.46
5:C:109:GLN:H	6:D:40:ARG:HH11	1.61	0.46
3:A:107:VAL:HG23	3:A:138:GLN:HE21	1.81	0.46
1:L:113:LYS:HE2	1:L:113:LYS:C	2.36	0.45
1:L:34:TYR:CE2	3:A:99:ALA:N	2.75	0.45
2:H:99:PHE:HD1	2:H:102:TYR:CZ	2.34	0.45
3:A:209:GLN:HE22	5:C:38:GLY:CA	2.29	0.45
3:A:87:VAL:HG12	3:A:88:PRO:HD3	1.99	0.45
3:A:308:HIS:CG	5:C:2:SER:HG	2.30	0.45
5:C:168:PHE:CD2	5:C:192:THR:HG21	2.51	0.45
2:H:128:PRO:HB3	2:H:154:TYR:HB3	1.98	0.45
2:H:205:ASN:HD22	2:H:216:ASP:CG	2.20	0.45
2:H:41:PRO:O	2:H:43:LYS:HD3	2.17	0.45
3:A:66:VAL:HG22	3:A:67:VAL:N	2.32	0.45
6:D:89:GLU:HA	6:D:92:GLU:HG2	1.98	0.45
1:L:95:SER:C	3:A:99:ALA:O	2.55	0.45
1:L:96:ASN:CA	3:A:103:SER:HB2	2.06	0.45
3:A:8:GLN:HB2	4:B:296:LEU:HD23	0.59	0.45
3:A:186:ASP:HB3	3:A:191:ILE:HG12	1.99	0.45
5:C:108:GLY:O	6:D:36:SER:OG	2.33	0.45
4:B:135:ILE:HD12	4:B:136:LEU:N	2.32	0.44
4:B:215:ALA:HA	4:B:218:VAL:CG1	2.47	0.44
5:C:124:VAL:HA	5:C:127:VAL:HG22	1.99	0.44
4:B:244:LYS:HG3	4:B:255:THR:CG2	2.47	0.44
3:A:122:PHE:HZ	3:A:227:LEU:HD22	1.82	0.44
3:A:307:PHE:O	5:C:2:SER:CA	2.66	0.44
4:B:227:ARG:NH1	4:B:227:ARG:HG3	2.31	0.44
1:L:132:LYS:HA	1:L:132:LYS:HD2	1.77	0.44
2:H:40:PRO:HA	2:H:41:PRO:HD3	1.88	0.44
2:H:134:ALA:HB2	2:H:219:ILE:CD1	2.48	0.44
2:H:5:LYS:HB2	2:H:5:LYS:NZ	2.31	0.44
4:B:117:GLU:HG3	4:B:154:SER:O	2.17	0.44

Continued on next page...

Continued from previous page...

Atom-1	Atom-2	Interatomic distance (Å)	Clash overlap (Å)
2:H:100:TYR:HB3	3:A:96:VAL:HG11	1.96	0.44
3:A:12:GLU:HA	4:B:303:LEU:HD11	0.66	0.44
3:A:250:HIS:CD2	3:A:271:LEU:HD23	2.52	0.44
5:C:97:ILE:CD1	5:C:127:VAL:HB	2.47	0.44
1:L:5:THR:HG23	1:L:23:ARG:NH2	2.32	0.44
1:L:113:LYS:HG2	1:L:114:SER:N	2.33	0.44
2:H:107:TYR:CD2	3:A:96:VAL:HA	2.52	0.44
3:A:12:GLU:CA	4:B:303:LEU:CD2	2.95	0.44
2:H:18:LEU:HB2	2:H:85:LEU:HD11	2.00	0.43
3:A:209:GLN:HE22	5:C:38:GLY:HA3	1.83	0.43
1:L:138:THR:HB	2:H:175:PHE:CZ	2.53	0.43
4:B:132:TRP:CZ3	4:B:135:ILE:HD11	2.53	0.43
1:L:34:TYR:HE2	3:A:99:ALA:HB3	1.79	0.43
5:C:107:PRO:CB	6:D:40:ARG:HH22	1.78	0.43
1:L:54:ASN:HD22	1:L:54:ASN:C	2.22	0.43
2:H:12:VAL:HG23	2:H:120:VAL:HG22	2.01	0.43
3:A:308:HIS:CG	5:C:2:SER:N	2.49	0.43
6:D:283:VAL:HG11	6:D:291:ARG:HG3	2.01	0.43
1:L:34:TYR:OH	3:A:97:ARG:N	2.52	0.43
3:A:186:ASP:HB3	3:A:191:ILE:CG1	2.49	0.43
3:A:15:ARG:NH2	4:B:302:ALA:O	2.51	0.43
3:A:128:LEU:HD22	3:A:163:ALA:HB1	2.01	0.43
3:A:256:LEU:HD12	3:A:264:LEU:CB	2.48	0.43
6:D:118:ASP:HB3	6:D:154:PRO:HG2	2.00	0.43
6:D:243:PRO:CG	6:D:261:ALA:HB3	2.49	0.43
3:A:172:GLN:HA	3:A:208:THR:CG2	2.49	0.43
3:A:308:HIS:ND1	5:C:3:LEU:CD1	2.57	0.43
2:H:106:TYR:HA	3:A:95:ALA:HB3	2.00	0.42
2:H:156:PRO:O	2:H:208:HIS:HE1	2.01	0.42
4:B:135:ILE:HD12	4:B:135:ILE:C	2.39	0.42
6:D:69:ILE:HG22	6:D:72:ASP:HB2	2.00	0.42
1:L:96:ASN:CA	3:A:103:SER:HA	2.40	0.42
1:L:162:MET:HA	1:L:180:TYR:O	2.19	0.42
3:A:46:VAL:CG2	3:A:264:LEU:CD2	2.97	0.42
6:D:243:PRO:CD	6:D:261:ALA:HB3	2.49	0.42
1:L:11:THR:HA	1:L:107:THR:O	2.20	0.42
4:B:163:PHE:HB3	4:B:227:ARG:HH11	1.81	0.42
5:C:301:ARG:CZ	6:D:33:GLY:HA2	2.49	0.42
1:L:14:PRO:HD3	1:L:109:LEU:O	2.19	0.42
1:L:196:CYS:O	1:L:206:GLU:HA	2.20	0.42
2:H:106:TYR:CA	3:A:95:ALA:HB3	2.43	0.42

Continued on next page...

Continued from previous page...

Atom-1	Atom-2	Interatomic distance (Å)	Clash overlap (Å)
4:B:117:GLU:HG3	4:B:158:TYR:CE1	2.51	0.42
4:B:300:ILE:N	4:B:301:PRO:HD2	2.34	0.42
2:H:153:GLY:HA2	2:H:183:LEU:HB3	2.02	0.42
3:A:166:LEU:HD12	3:A:201:LEU:CD1	2.50	0.42
6:D:104:LEU:HD13	6:D:293:GLN:HE21	1.84	0.42
6:D:229:ARG:HH11	6:D:229:ARG:CG	2.33	0.42
2:H:72:ASP:HB3	2:H:75:LYS:HB2	2.01	0.42
3:A:208:THR:C	5:C:41:ARG:CD	2.87	0.42
5:C:81:PRO:HG3	5:C:155:SER:OG	2.20	0.41
6:D:116:PHE:CE2	6:D:217:ALA:HA	2.54	0.41
3:A:209:GLN:C	5:C:41:ARG:HD3	2.39	0.41
3:A:307:PHE:O	5:C:2:SER:HA	2.20	0.41
1:L:203:HIS:CE1	1:L:205:VAL:HG23	2.55	0.41
2:H:13:ALA:HA	2:H:14:PRO:HD3	1.92	0.41
3:A:136:LEU:HD13	3:A:203:GLY:CA	2.49	0.41
6:D:122:LEU:O	6:D:126:SER:HB2	2.20	0.41
3:A:101:VAL:HG21	3:A:134:TYR:HB2	2.02	0.41
4:B:169:LEU:HD21	4:B:190:PRO:HD3	2.02	0.41
3:A:169:SER:HB3	3:A:201:LEU:HD21	2.03	0.41
3:A:186:ASP:H	3:A:191:ILE:HB	1.84	0.41
3:A:209:GLN:O	5:C:41:ARG:CD	2.69	0.41
5:C:97:ILE:HD11	5:C:127:VAL:CB	2.50	0.41
2:H:104:VAL:C	3:A:93:ASP:OD2	2.56	0.41
3:A:6:VAL:HG23	3:A:261:GLU:HG3	2.03	0.41
4:B:57:LYS:HE2	4:B:63:SER:CA	2.51	0.41
2:H:17:SER:OG	2:H:81:LYS:HE3	2.20	0.41
2:H:83:LYS:HB2	2:H:83:LYS:HZ2	1.86	0.40
1:L:156:THR:HA	1:L:157:PRO:HD2	1.90	0.40
3:A:8:GLN:NE2	4:B:300:ILE:N	2.68	0.40
3:A:42:GLU:OE2	3:A:66:VAL:CG2	2.69	0.40
6:D:161:LEU:HB3	6:D:220:PHE:CE1	2.56	0.40
3:A:10:LEU:CD1	3:A:266:LEU:CD2	2.99	0.40
2:H:104:VAL:HG23	3:A:93:ASP:OD2	2.21	0.40
3:A:120:ASP:O	3:A:157:PRO:HD2	2.21	0.40

There are no symmetry-related clashes.

5.3 Torsion angles [i](#)

5.3.1 Protein backbone [i](#)

In the following table, the Percentiles column shows the percent Ramachandran outliers of the chain as a percentile score with respect to all PDB entries followed by that with respect to all EM entries.

The Analysed column shows the number of residues for which the backbone conformation was analysed, and the total number of residues.

Mol	Chain	Analysed	Favoured	Allowed	Outliers	Percentiles	
1	L	208/210 (99%)	198 (95%)	9 (4%)	1 (0%)	29	69
2	H	219/221 (99%)	209 (95%)	7 (3%)	3 (1%)	11	46
3	A	301/303 (99%)	281 (93%)	16 (5%)	4 (1%)	12	48
4	B	307/309 (99%)	298 (97%)	8 (3%)	1 (0%)	41	77
5	C	298/300 (99%)	275 (92%)	19 (6%)	4 (1%)	12	48
6	D	294/296 (99%)	280 (95%)	12 (4%)	2 (1%)	22	63
All	All	1627/1639 (99%)	1541 (95%)	71 (4%)	15 (1%)	21	57

All (15) Ramachandran outliers are listed below:

Mol	Chain	Res	Type
2	H	64	MET
5	C	155	SER
5	C	172	PRO
6	D	84	GLN
6	D	243	PRO
2	H	137	SER
3	A	83	PRO
4	B	2	SER
3	A	67	VAL
5	C	81	PRO
1	L	95	SER
2	H	142	ASN
3	A	78	GLU
3	A	191	ILE
5	C	82	PRO

5.3.2 Protein sidechains [i](#)

In the following table, the Percentiles column shows the percent sidechain outliers of the chain as a percentile score with respect to all PDB entries followed by that with respect to all EM entries.

The Analysed column shows the number of residues for which the sidechain conformation was analysed, and the total number of residues.

Mol	Chain	Analysed	Rotameric	Outliers	Percentiles
1	L	178/178 (100%)	156 (88%)	22 (12%)	4 19
2	H	192/192 (100%)	168 (88%)	24 (12%)	4 19
3	A	258/258 (100%)	255 (99%)	3 (1%)	71 83
4	B	245/259 (95%)	231 (94%)	14 (6%)	20 45
5	C	243/243 (100%)	241 (99%)	2 (1%)	81 89
6	D	248/248 (100%)	242 (98%)	6 (2%)	49 69
All	All	1364/1378 (99%)	1293 (95%)	71 (5%)	27 48

All (71) residues with a non-rotameric sidechain are listed below:

Mol	Chain	Res	Type
1	L	10	LEU
1	L	11	THR
1	L	18	VAL
1	L	20	LEU
1	L	23	ARG
1	L	30	THR
1	L	31	THR
1	L	49	LEU
1	L	54	ASN
1	L	68	LEU
1	L	96	ASN
1	L	113	LYS
1	L	135	LEU
1	L	146	VAL
1	L	156	THR
1	L	159	THR
1	L	160	GLN
1	L	197	GLN
1	L	199	THR
1	L	203	HIS
1	L	206	GLU
1	L	209	LEU

Continued on next page...

Continued from previous page...

Mol	Chain	Res	Type
2	H	3	GLN
2	H	12	VAL
2	H	17	SER
2	H	38	ARG
2	H	43	LYS
2	H	61	SER
2	H	81	LYS
2	H	82	MET
2	H	83	LYS
2	H	124	LYS
2	H	126	THR
2	H	140	GLN
2	H	141	THR
2	H	146	THR
2	H	158	PRO
2	H	160	THR
2	H	162	THR
2	H	169	SER
2	H	180	GLN
2	H	185	THR
2	H	186	LEU
2	H	200	GLU
2	H	214	LYS
2	H	219	ILE
3	A	41	SER
3	A	187	ARG
3	A	231	MET
4	B	2	SER
4	B	4	THR
4	B	31	ASP
4	B	40	LEU
4	B	57	LYS
4	B	60	ILE
4	B	72	ASP
4	B	123	VAL
4	B	128	LEU
4	B	195	LYS
4	B	199	THR
4	B	218	VAL
4	B	227	ARG
4	B	284	GLU
5	C	86	VAL

Continued on next page...

Continued from previous page...

Mol	Chain	Res	Type
5	C	226	MET
6	D	13	LEU
6	D	125	VAL
6	D	229	ARG
6	D	252	THR
6	D	257	THR
6	D	286	GLU

Sometimes sidechains can be flipped to improve hydrogen bonding and reduce clashes. All (15) such sidechains are listed below:

Mol	Chain	Res	Type
1	L	54	ASN
1	L	197	GLN
2	H	35	HIS
2	H	142	ASN
2	H	180	GLN
2	H	208	HIS
3	A	50	ASN
3	A	138	GLN
3	A	190	ASN
3	A	209	GLN
3	A	250	HIS
4	B	112	GLN
4	B	113	HIS
5	C	175	HIS
6	D	293	GLN

5.3.3 RNA [i](#)

There are no RNA molecules in this entry.

5.4 Non-standard residues in protein, DNA, RNA chains [i](#)

There are no non-standard protein/DNA/RNA residues in this entry.

5.5 Carbohydrates [i](#)

There are no monosaccharides in this entry.

5.6 Ligand geometry [i](#)

There are no ligands in this entry.

5.7 Other polymers [i](#)

There are no such residues in this entry.

5.8 Polymer linkage issues [i](#)

There are no chain breaks in this entry.

6 Map visualisation [i](#)

This section contains visualisations of the EMDB entry EMD-22474. These allow visual inspection of the internal detail of the map and identification of artifacts.

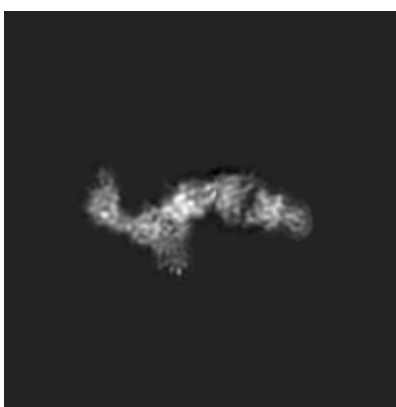
No raw map or half-maps were deposited for this entry and therefore no images, graphs, etc. pertaining to the raw map can be shown.

6.1 Orthogonal projections [i](#)

6.1.1 Primary map



X



Y



Z

The images above show the map projected in three orthogonal directions.

6.2 Central slices [i](#)

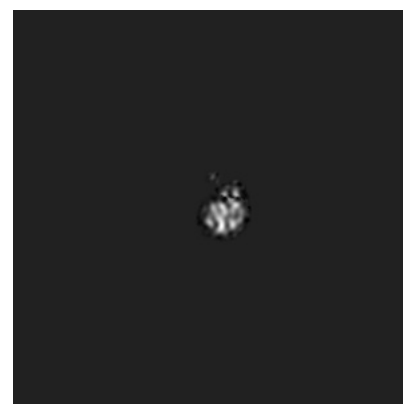
6.2.1 Primary map



X Index: 120



Y Index: 120

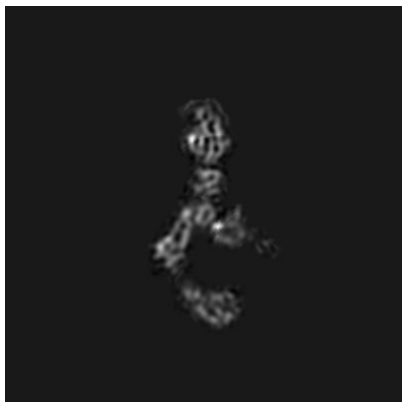


Z Index: 120

The images above show central slices of the map in three orthogonal directions.

6.3 Largest variance slices [i](#)

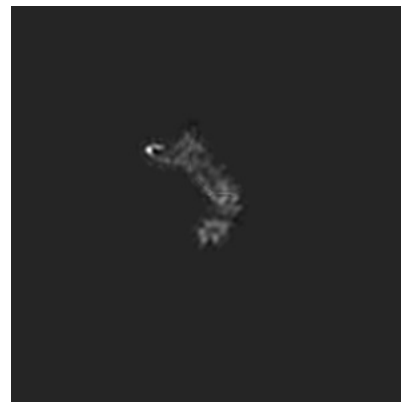
6.3.1 Primary map



X Index: 120



Y Index: 123



Z Index: 105

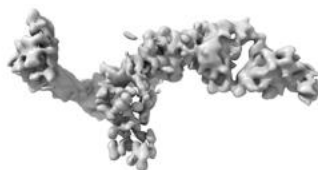
The images above show the largest variance slices of the map in three orthogonal directions.

6.4 Orthogonal surface views [i](#)

6.4.1 Primary map



X



Y



Z

The images above show the 3D surface view of the map at the recommended contour level 0.73. These images, in conjunction with the slice images, may facilitate assessment of whether an appropriate contour level has been provided.

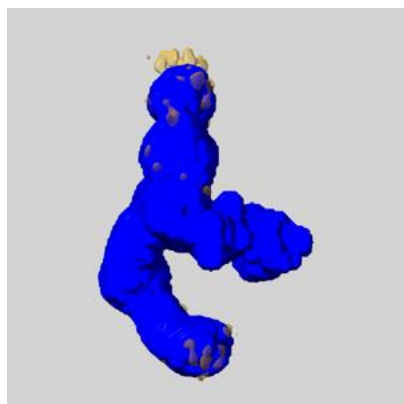
6.5 Mask visualisation [i](#)

This section shows the 3D surface view of the primary map at 50% transparency overlaid with the specified mask at 0% transparency

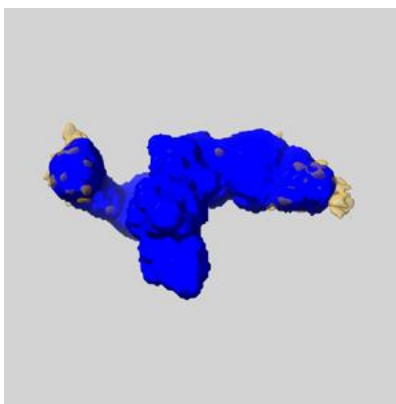
A mask typically either:

- Encompasses the whole structure
- Separates out a domain, a functional unit, a monomer or an area of interest from a larger structure

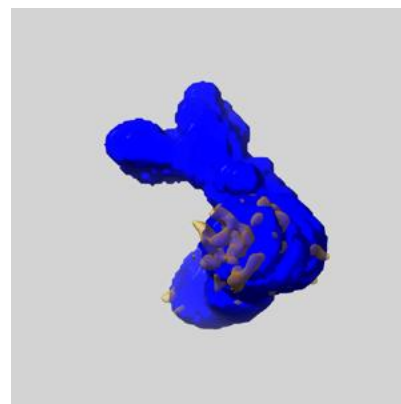
6.5.1 emd_22474_msk_1.map [i](#)



X



Y

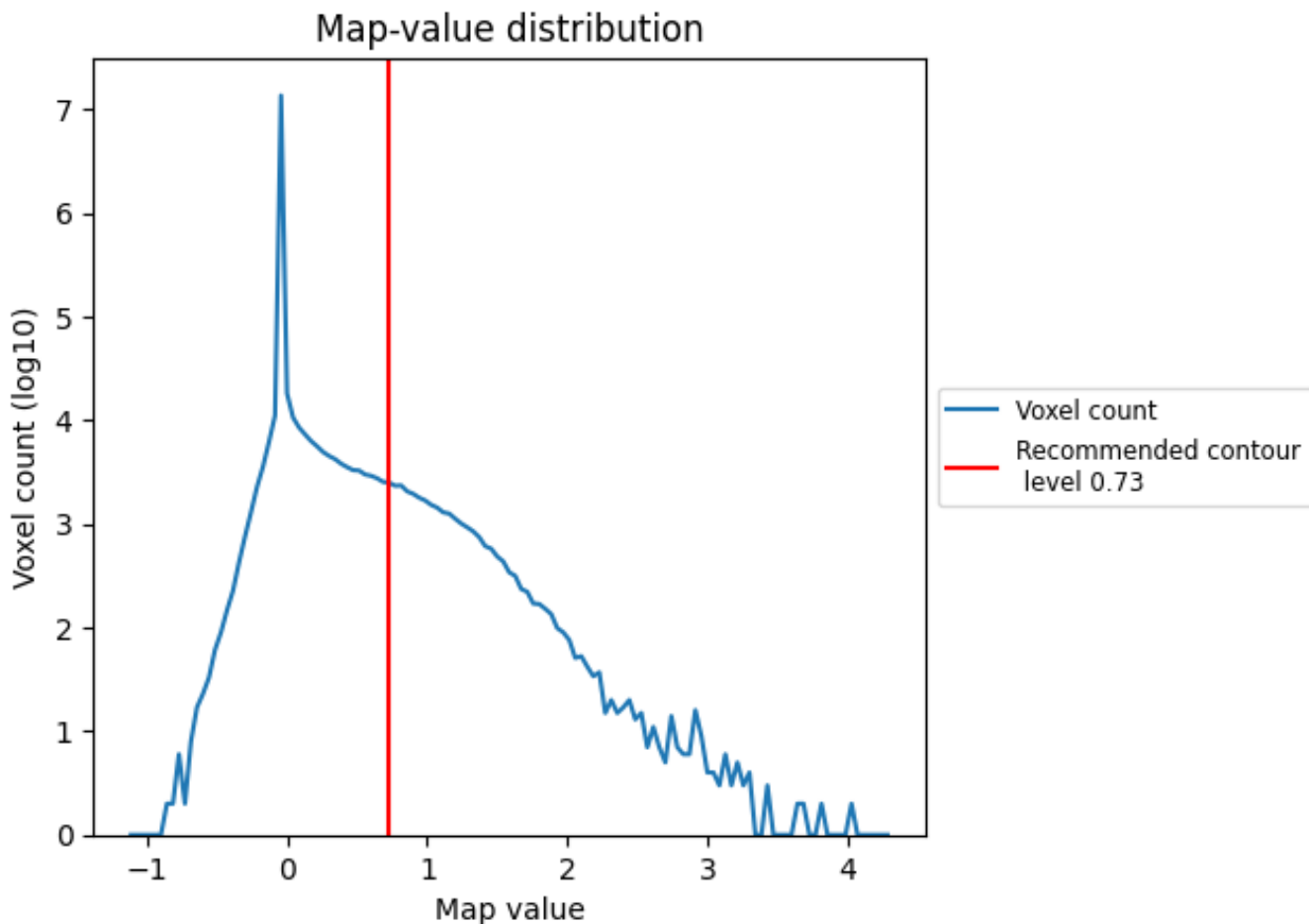


Z

7 Map analysis [i](#)

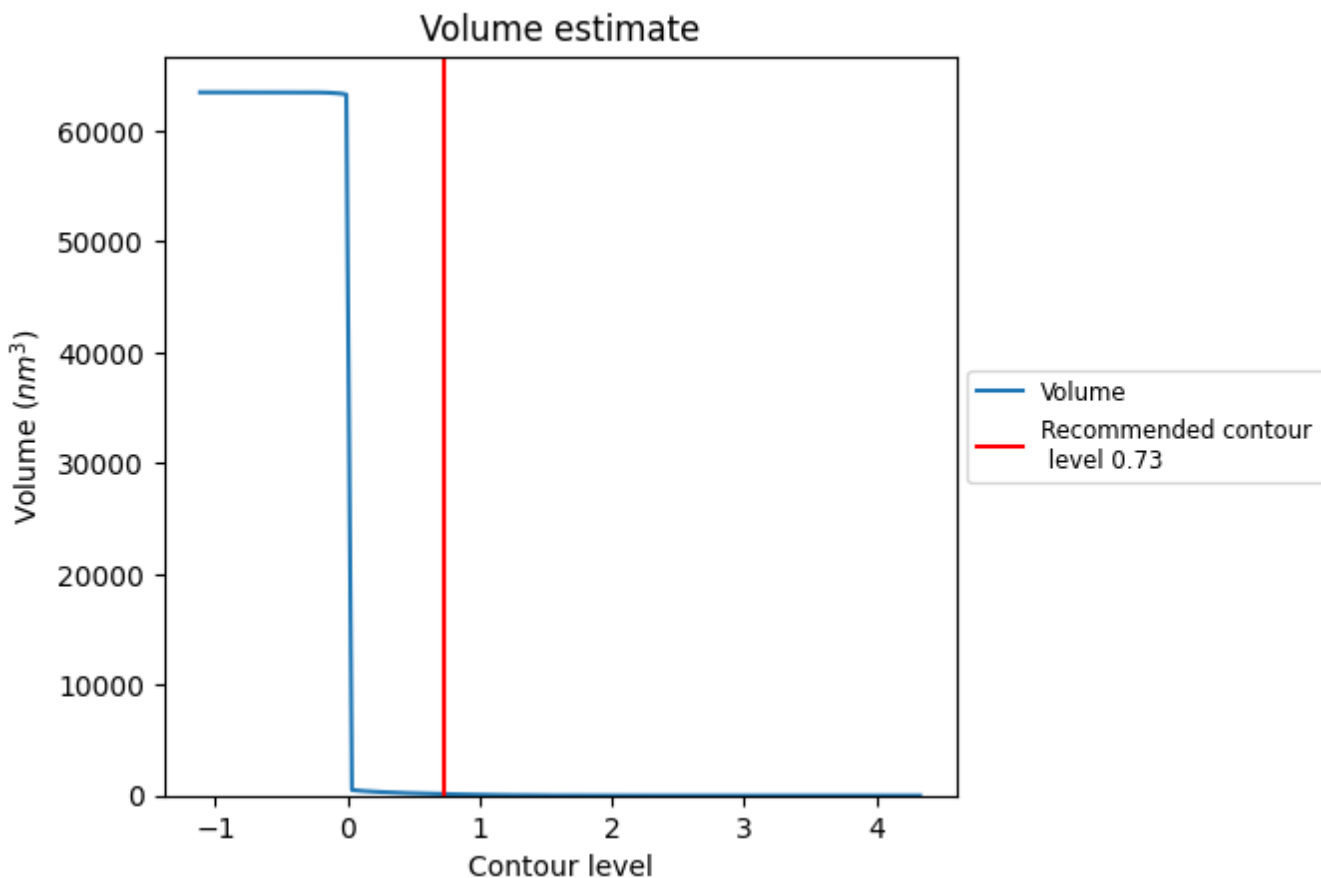
This section contains the results of statistical analysis of the map.

7.1 Map-value distribution [i](#)



The map-value distribution is plotted in 128 intervals along the x-axis. The y-axis is logarithmic. A spike in this graph at zero usually indicates that the volume has been masked.

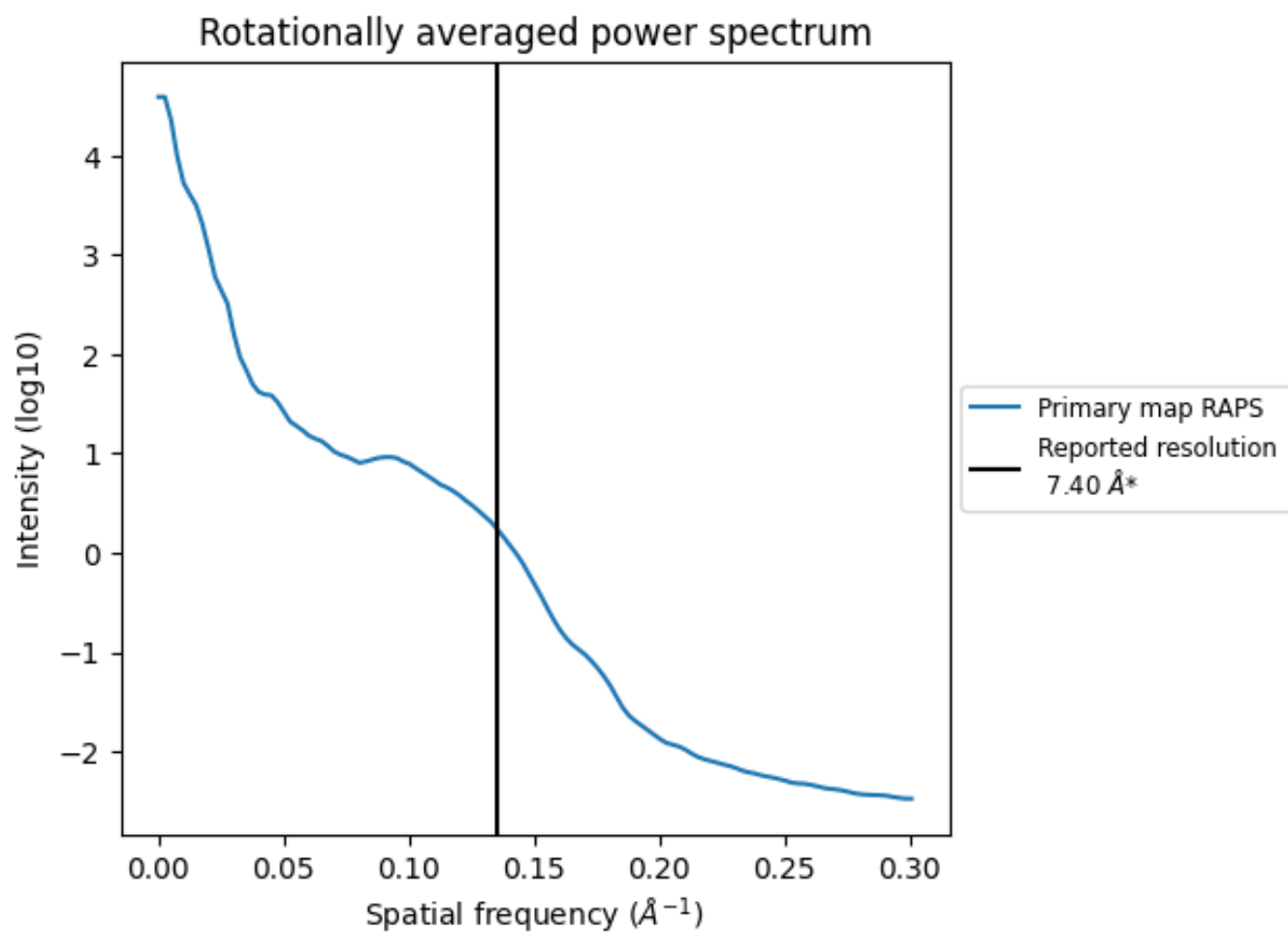
7.2 Volume estimate [i](#)



The volume at the recommended contour level is 135 nm³; this corresponds to an approximate mass of 122 kDa.

The volume estimate graph shows how the enclosed volume varies with the contour level. The recommended contour level is shown as a vertical line and the intersection between the line and the curve gives the volume of the enclosed surface at the given level.

7.3 Rotationally averaged power spectrum [i](#)

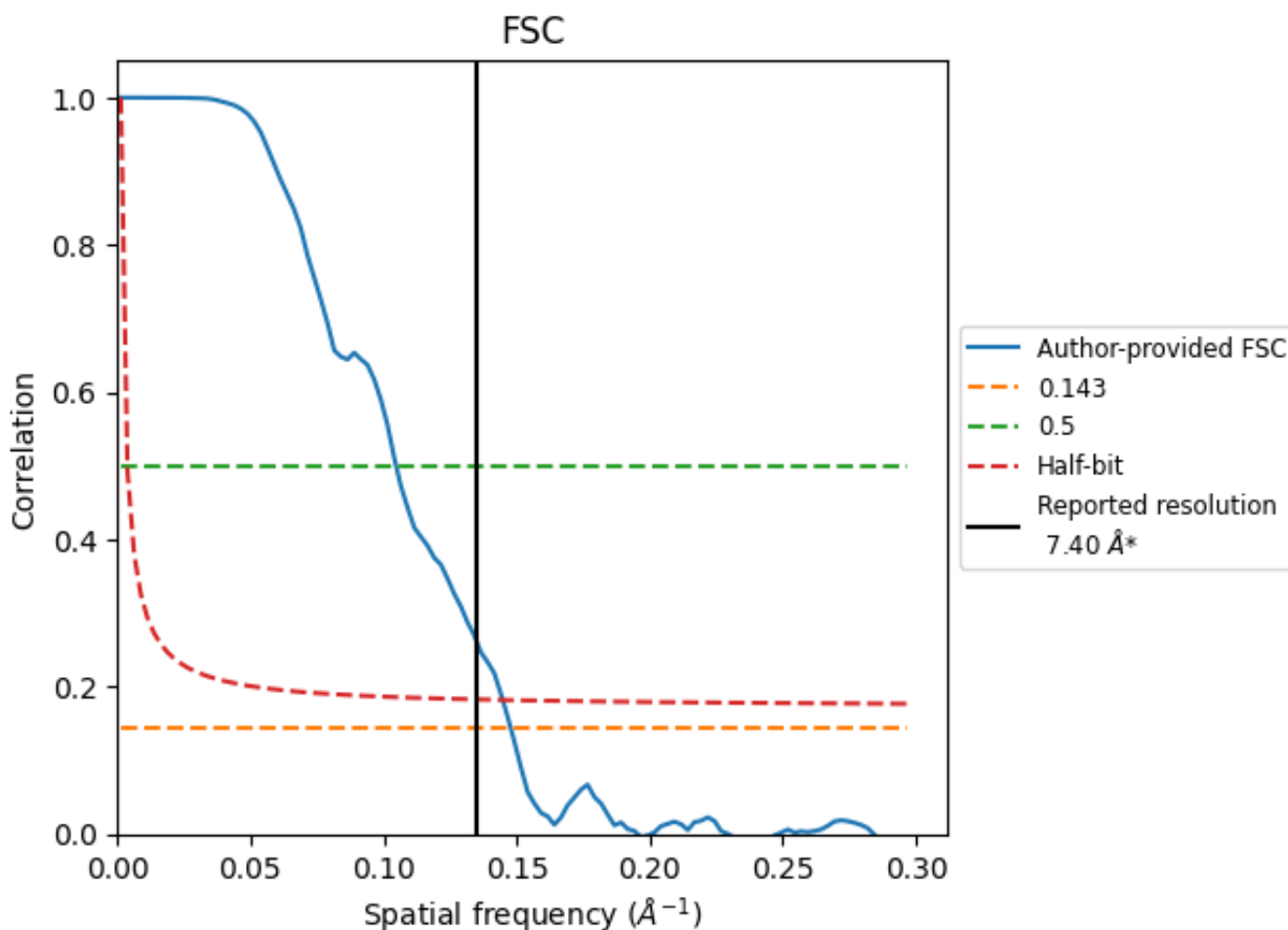


*Reported resolution corresponds to spatial frequency of 0.135 Å⁻¹

8 Fourier-Shell correlation [i](#)

Fourier-Shell Correlation (FSC) is the most commonly used method to estimate the resolution of single-particle and subtomogram-averaged maps. The shape of the curve depends on the imposed symmetry, mask and whether or not the two 3D reconstructions used were processed from a common reference. The reported resolution is shown as a black line. A curve is displayed for the half-bit criterion in addition to lines showing the 0.143 gold standard cut-off and 0.5 cut-off.

8.1 FSC [i](#)



*Reported resolution corresponds to spatial frequency of 0.135 Å⁻¹

8.2 Resolution estimates [i](#)

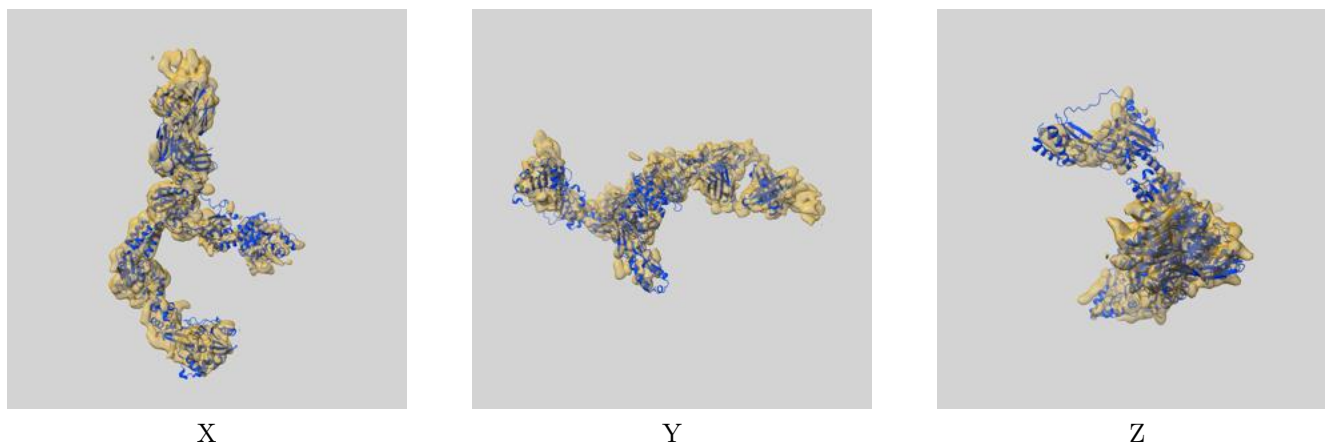
Resolution estimate (Å)	Estimation criterion (FSC cut-off)		
	0.143	0.5	Half-bit
Reported by author	-	7.40	-
Author-provided FSC curve	6.77	9.54	6.91
Unmasked-calculated*	-	-	-

*Resolution estimate based on FSC curve calculated by comparison of deposited half-maps. The value from author-provided FSC intersecting FSC 0.5 CUT-OFF 9.54 differs from the reported value 7.4 by more than 10 %

9 Map-model fit [i](#)

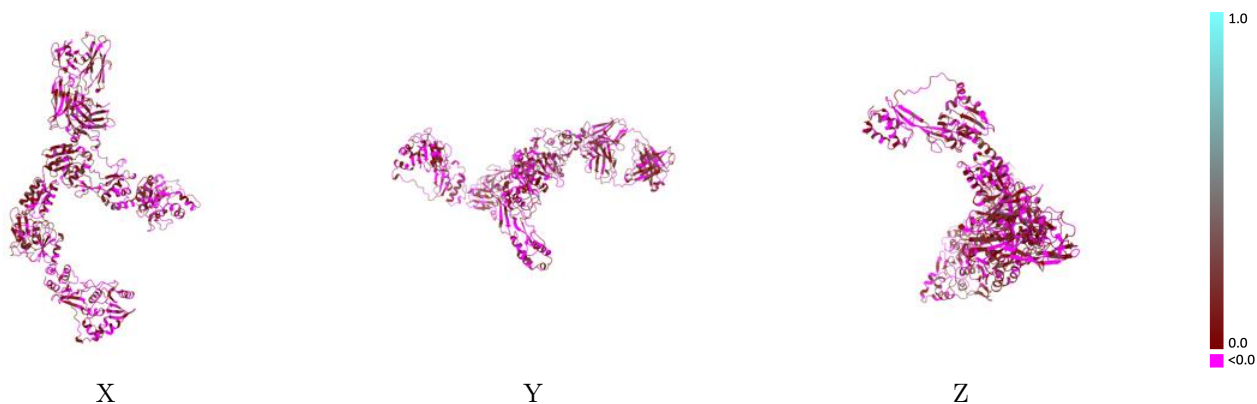
This section contains information regarding the fit between EMDB map EMD-22474 and PDB model 7JTI. Per-residue inclusion information can be found in section 3 on page 4.

9.1 Map-model overlay [i](#)



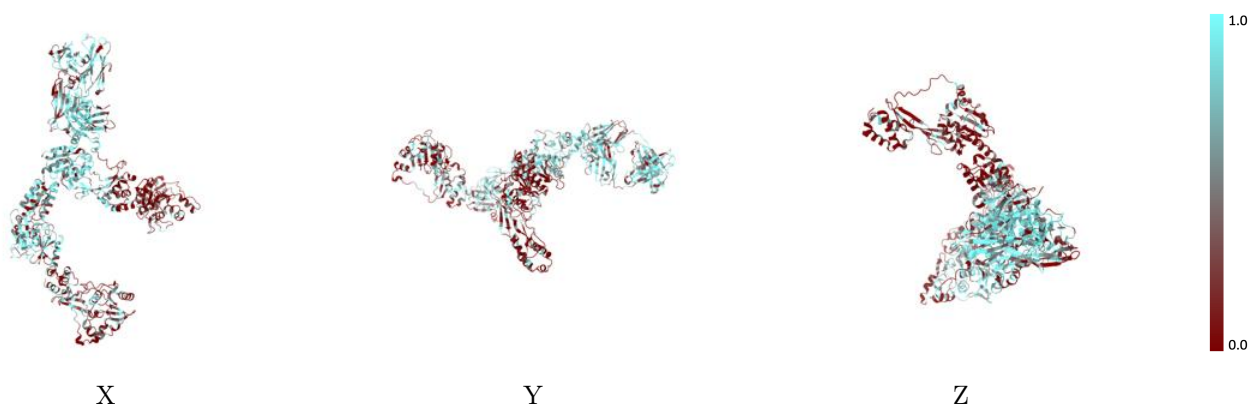
The images above show the 3D surface view of the map at the recommended contour level 0.73 at 50% transparency in yellow overlaid with a ribbon representation of the model coloured in blue. These images allow for the visual assessment of the quality of fit between the atomic model and the map.

9.2 Q-score mapped to coordinate model [i](#)



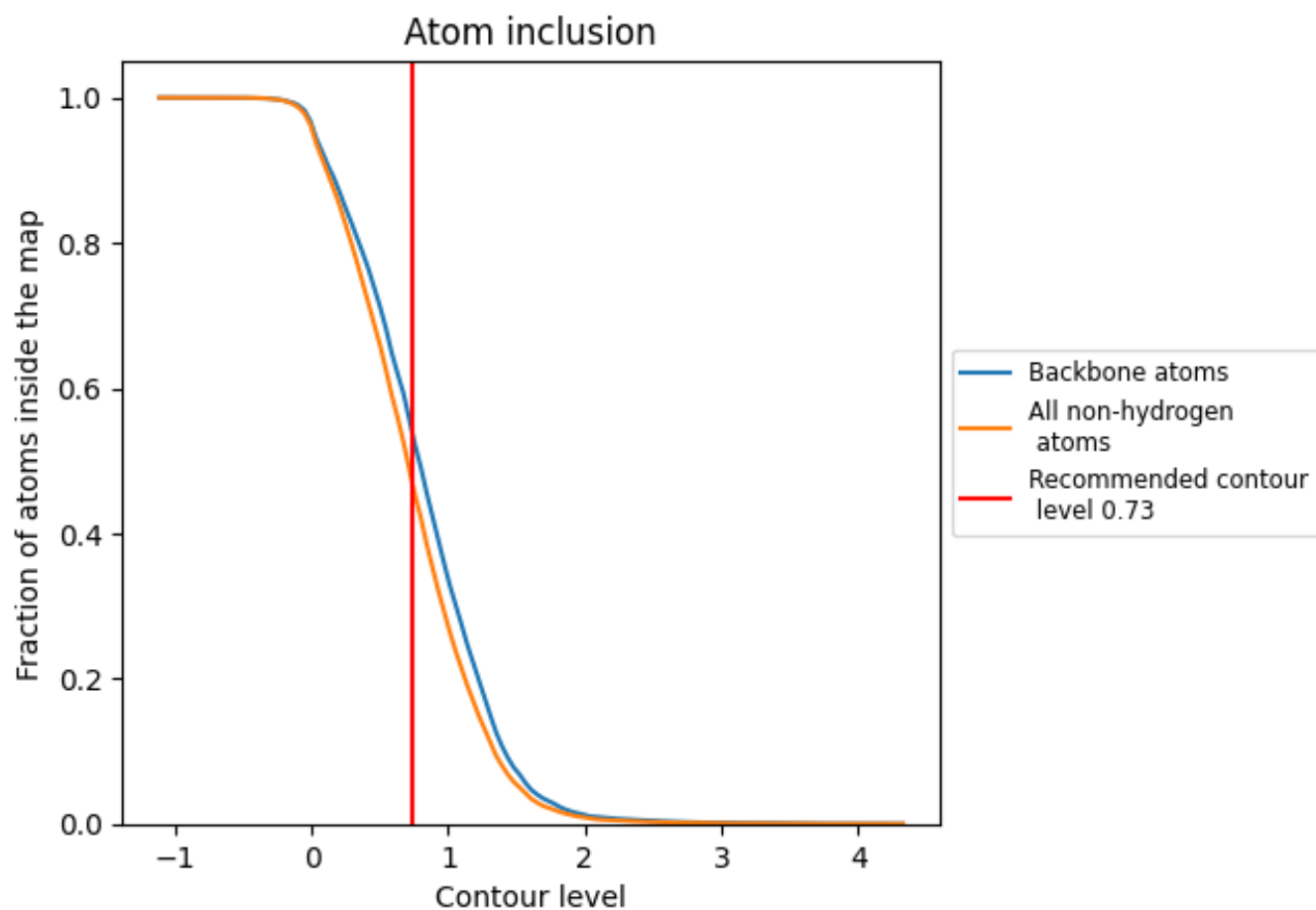
The images above show the model with each residue coloured according to its Q-score. This shows their resolvability in the map with higher Q-score values reflecting better resolvability. Please note: Q-score is calculating the resolvability of atoms, and thus high values are only expected at resolutions at which atoms can be resolved. Low Q-score values may therefore be expected for many entries.

9.3 Atom inclusion mapped to coordinate model [i](#)



The images above show the model with each residue coloured according to its atom inclusion. This shows to what extent they are inside the map at the recommended contour level (0.73).















9.4 Atom inclusion [i](#)



At the recommended contour level, 54% of all backbone atoms, 47% of all non-hydrogen atoms, are inside the map.

9.5 Map-model fit summary

The table lists the average atom inclusion at the recommended contour level (0.73) and Q-score for the entire model and for each chain.

Chain	Atom inclusion	Q-score
All	 0.4748	 0.0480
A	 0.5689	 0.0740
B	 0.2061	 0.0240
C	 0.5755	 0.0620
D	 0.3173	 0.0150
H	 0.6477	 0.0750
L	 0.6228	 0.0460

