



wwPDB EM Validation Summary Report

Nov 19, 2023 – 12:14 AM JST

PDB ID : 8J0J
EMDB ID : EMD-35904
Title : AtSLAC1 8D mutant in closed state
Authors : Lee, Y.; Lee, S.
Deposited on : 2023-04-11
Resolution : 2.70 Å(reported)

This is a wwPDB EM Validation Summary Report for a publicly released PDB entry.

We welcome your comments at validation@mail.wwpdb.org

A user guide is available at

<https://www.wwpdb.org/validation/2017/EMValidationReportHelp>

with specific help available everywhere you see the  symbol.

The types of validation reports are described at

<http://www.wwpdb.org/validation/2017/FAQs#types>.

The following versions of software and data (see [references](#) ) were used in the production of this report:

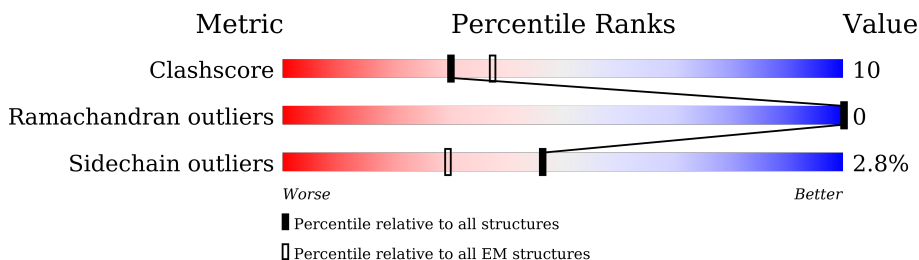
EMDB validation analysis : 0.0.1.dev70
Mogul : 1.8.5 (274361), CSD as541be (2020)
MolProbity : 4.02b-467
buster-report : 1.1.7 (2018)
Percentile statistics : 20191225.v01 (using entries in the PDB archive December 25th 2019)
MapQ : 1.9.9
Ideal geometry (proteins) : Engh & Huber (2001)
Ideal geometry (DNA, RNA) : Parkinson et al. (1996)
Validation Pipeline (wwPDB-VP) : 2.36

1 Overall quality at a glance

The following experimental techniques were used to determine the structure:
ELECTRON MICROSCOPY

The reported resolution of this entry is 2.70 Å.

Percentile scores (ranging between 0-100) for global validation metrics of the entry are shown in the following graphic. The table shows the number of entries on which the scores are based.



Metric	Whole archive (#Entries)	EM structures (#Entries)
Clashscore	158937	4297
Ramachandran outliers	154571	4023
Sidechain outliers	154315	3826

The table below summarises the geometric issues observed across the polymeric chains and their fit to the map. The red, orange, yellow and green segments of the bar indicate the fraction of residues that contain outliers for ≥ 3 , 2, 1 and 0 types of geometric quality criteria respectively. A grey segment represents the fraction of residues that are not modelled. The numeric value for each fraction is indicated below the corresponding segment, with a dot representing fractions $\leq 5\%$. The upper red bar (where present) indicates the fraction of residues that have poor fit to the EM map (all-atom inclusion $< 40\%$). The numeric value is given above the bar.

Mol	Chain	Length	Quality of chain
1	A	826	
1	B	826	
1	C	826	

The following table lists non-polymeric compounds, carbohydrate monomers and non-standard residues in protein, DNA, RNA chains that are outliers for geometric or electron-density-fit criteria:

Mol	Type	Chain	Res	Chirality	Geometry	Clashes	Electron density
3	Y01	A	902	-	-	X	-
3	Y01	B	901	-	-	X	-
3	Y01	C	901	-	-	X	-

2 Entry composition

There are 3 unique types of molecules in this entry. The entry contains 9285 atoms, of which 147 are hydrogens and 0 are deuteriums.

In the tables below, the AltConf column contains the number of residues with at least one atom in alternate conformation and the Trace column contains the number of residues modelled with at most 2 atoms.

- Molecule 1 is a protein called Guard cell S-type anion channel SLAC1, Green fluorescent protein.

Mol	Chain	Residues	Atoms					AltConf	Trace
			Total	C	N	O	S		
1	A	377	3010	2027	473	494	16	0	0
1	B	377	3010	2027	473	494	16	0	0
1	C	377	3010	2027	473	494	16	0	0

There are 156 discrepancies between the modelled and reference sequences:

Chain	Residue	Modelled	Actual	Comment	Reference
A	59	ASP	SER	engineered mutation	UNP Q9LD83
A	62	ASP	THR	engineered mutation	UNP Q9LD83
A	65	ASP	SER	engineered mutation	UNP Q9LD83
A	86	ASP	SER	engineered mutation	UNP Q9LD83
A	107	ASP	SER	engineered mutation	UNP Q9LD83
A	124	ASP	SER	engineered mutation	UNP Q9LD83
A	146	ASP	SER	engineered mutation	UNP Q9LD83
A	152	ASP	SER	engineered mutation	UNP Q9LD83
A	557	GLY	-	linker	UNP Q9LD83
A	558	SER	-	linker	UNP Q9LD83
A	559	GLU	-	linker	UNP Q9LD83
A	560	ASN	-	linker	UNP Q9LD83
A	561	LEU	-	linker	UNP Q9LD83
A	562	TYR	-	linker	UNP Q9LD83
A	563	PHE	-	linker	UNP Q9LD83
A	564	GLN	-	linker	UNP Q9LD83
A	565	SER	-	linker	UNP Q9LD83
A	595	ARG	SER	engineered mutation	UNP P42212
A	604	ASN	TYR	engineered mutation	UNP P42212
A	629	LEU	PHE	engineered mutation	UNP P42212
A	630	THR	SER	engineered mutation	UNP P42212
A	645	ARG	GLN	engineered mutation	UNP P42212
A	664	SER	PHE	engineered mutation	UNP P42212

Continued on next page...

Continued from previous page...

Chain	Residue	Modelled	Actual	Comment	Reference
A	670	THR	ASN	engineered mutation	UNP P42212
A	710	PHE	TYR	engineered mutation	UNP P42212
A	718	THR	MET	engineered mutation	UNP P42212
A	728	ALA	VAL	engineered mutation	UNP P42212
A	736	VAL	ILE	engineered mutation	UNP P42212
A	771	VAL	ALA	engineered mutation	UNP P42212
A	804	TYR	-	expression tag	UNP P42212
A	805	PRO	-	expression tag	UNP P42212
A	806	TYR	-	expression tag	UNP P42212
A	807	ASP	-	expression tag	UNP P42212
A	808	VAL	-	expression tag	UNP P42212
A	809	PRO	-	expression tag	UNP P42212
A	810	ASP	-	expression tag	UNP P42212
A	811	TYR	-	expression tag	UNP P42212
A	812	ALA	-	expression tag	UNP P42212
A	813	GLY	-	expression tag	UNP P42212
A	814	GLY	-	expression tag	UNP P42212
A	815	GLY	-	expression tag	UNP P42212
A	816	SER	-	expression tag	UNP P42212
A	817	HIS	-	expression tag	UNP P42212
A	818	HIS	-	expression tag	UNP P42212
A	819	HIS	-	expression tag	UNP P42212
A	820	HIS	-	expression tag	UNP P42212
A	821	HIS	-	expression tag	UNP P42212
A	822	HIS	-	expression tag	UNP P42212
A	823	HIS	-	expression tag	UNP P42212
A	824	HIS	-	expression tag	UNP P42212
A	825	HIS	-	expression tag	UNP P42212
A	826	HIS	-	expression tag	UNP P42212
B	59	ASP	SER	engineered mutation	UNP Q9LD83
B	62	ASP	THR	engineered mutation	UNP Q9LD83
B	65	ASP	SER	engineered mutation	UNP Q9LD83
B	86	ASP	SER	engineered mutation	UNP Q9LD83
B	107	ASP	SER	engineered mutation	UNP Q9LD83
B	124	ASP	SER	engineered mutation	UNP Q9LD83
B	146	ASP	SER	engineered mutation	UNP Q9LD83
B	152	ASP	SER	engineered mutation	UNP Q9LD83
B	557	GLY	-	linker	UNP Q9LD83
B	558	SER	-	linker	UNP Q9LD83
B	559	GLU	-	linker	UNP Q9LD83
B	560	ASN	-	linker	UNP Q9LD83
B	561	LEU	-	linker	UNP Q9LD83

Continued on next page...

Continued from previous page...

Chain	Residue	Modelled	Actual	Comment	Reference
B	562	TYR	-	linker	UNP Q9LD83
B	563	PHE	-	linker	UNP Q9LD83
B	564	GLN	-	linker	UNP Q9LD83
B	565	SER	-	linker	UNP Q9LD83
B	595	ARG	SER	engineered mutation	UNP P42212
B	604	ASN	TYR	engineered mutation	UNP P42212
B	629	LEU	PHE	engineered mutation	UNP P42212
B	630	THR	SER	engineered mutation	UNP P42212
B	645	ARG	GLN	engineered mutation	UNP P42212
B	664	SER	PHE	engineered mutation	UNP P42212
B	670	THR	ASN	engineered mutation	UNP P42212
B	710	PHE	TYR	engineered mutation	UNP P42212
B	718	THR	MET	engineered mutation	UNP P42212
B	728	ALA	VAL	engineered mutation	UNP P42212
B	736	VAL	ILE	engineered mutation	UNP P42212
B	771	VAL	ALA	engineered mutation	UNP P42212
B	804	TYR	-	expression tag	UNP P42212
B	805	PRO	-	expression tag	UNP P42212
B	806	TYR	-	expression tag	UNP P42212
B	807	ASP	-	expression tag	UNP P42212
B	808	VAL	-	expression tag	UNP P42212
B	809	PRO	-	expression tag	UNP P42212
B	810	ASP	-	expression tag	UNP P42212
B	811	TYR	-	expression tag	UNP P42212
B	812	ALA	-	expression tag	UNP P42212
B	813	GLY	-	expression tag	UNP P42212
B	814	GLY	-	expression tag	UNP P42212
B	815	GLY	-	expression tag	UNP P42212
B	816	SER	-	expression tag	UNP P42212
B	817	HIS	-	expression tag	UNP P42212
B	818	HIS	-	expression tag	UNP P42212
B	819	HIS	-	expression tag	UNP P42212
B	820	HIS	-	expression tag	UNP P42212
B	821	HIS	-	expression tag	UNP P42212
B	822	HIS	-	expression tag	UNP P42212
B	823	HIS	-	expression tag	UNP P42212
B	824	HIS	-	expression tag	UNP P42212
B	825	HIS	-	expression tag	UNP P42212
B	826	HIS	-	expression tag	UNP P42212
C	59	ASP	SER	engineered mutation	UNP Q9LD83
C	62	ASP	THR	engineered mutation	UNP Q9LD83
C	65	ASP	SER	engineered mutation	UNP Q9LD83

Continued on next page...

Continued from previous page...

Chain	Residue	Modelled	Actual	Comment	Reference
C	86	ASP	SER	engineered mutation	UNP Q9LD83
C	107	ASP	SER	engineered mutation	UNP Q9LD83
C	124	ASP	SER	engineered mutation	UNP Q9LD83
C	146	ASP	SER	engineered mutation	UNP Q9LD83
C	152	ASP	SER	engineered mutation	UNP Q9LD83
C	557	GLY	-	linker	UNP Q9LD83
C	558	SER	-	linker	UNP Q9LD83
C	559	GLU	-	linker	UNP Q9LD83
C	560	ASN	-	linker	UNP Q9LD83
C	561	LEU	-	linker	UNP Q9LD83
C	562	TYR	-	linker	UNP Q9LD83
C	563	PHE	-	linker	UNP Q9LD83
C	564	GLN	-	linker	UNP Q9LD83
C	565	SER	-	linker	UNP Q9LD83
C	595	ARG	SER	engineered mutation	UNP P42212
C	604	ASN	TYR	engineered mutation	UNP P42212
C	629	LEU	PHE	engineered mutation	UNP P42212
C	630	THR	SER	engineered mutation	UNP P42212
C	645	ARG	GLN	engineered mutation	UNP P42212
C	664	SER	PHE	engineered mutation	UNP P42212
C	670	THR	ASN	engineered mutation	UNP P42212
C	710	PHE	TYR	engineered mutation	UNP P42212
C	718	THR	MET	engineered mutation	UNP P42212
C	728	ALA	VAL	engineered mutation	UNP P42212
C	736	VAL	ILE	engineered mutation	UNP P42212
C	771	VAL	ALA	engineered mutation	UNP P42212
C	804	TYR	-	expression tag	UNP P42212
C	805	PRO	-	expression tag	UNP P42212
C	806	TYR	-	expression tag	UNP P42212
C	807	ASP	-	expression tag	UNP P42212
C	808	VAL	-	expression tag	UNP P42212
C	809	PRO	-	expression tag	UNP P42212
C	810	ASP	-	expression tag	UNP P42212
C	811	TYR	-	expression tag	UNP P42212
C	812	ALA	-	expression tag	UNP P42212
C	813	GLY	-	expression tag	UNP P42212
C	814	GLY	-	expression tag	UNP P42212
C	815	GLY	-	expression tag	UNP P42212
C	816	SER	-	expression tag	UNP P42212
C	817	HIS	-	expression tag	UNP P42212
C	818	HIS	-	expression tag	UNP P42212
C	819	HIS	-	expression tag	UNP P42212

Continued on next page...

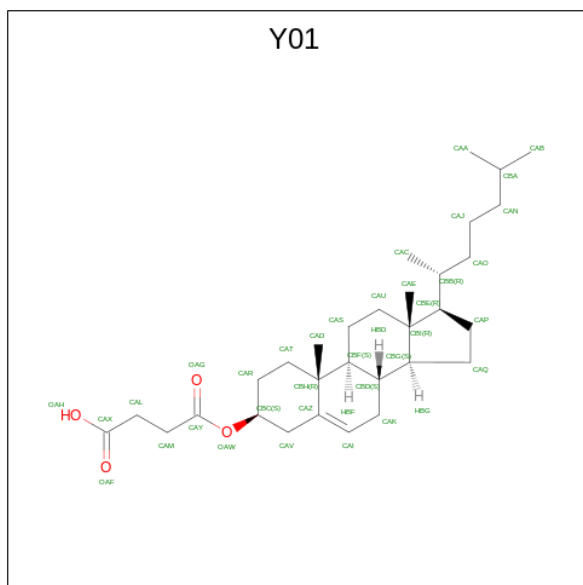
Continued from previous page...

Chain	Residue	Modelled	Actual	Comment	Reference
C	820	HIS	-	expression tag	UNP P42212
C	821	HIS	-	expression tag	UNP P42212
C	822	HIS	-	expression tag	UNP P42212
C	823	HIS	-	expression tag	UNP P42212
C	824	HIS	-	expression tag	UNP P42212
C	825	HIS	-	expression tag	UNP P42212
C	826	HIS	-	expression tag	UNP P42212

- Molecule 2 is CHLORIDE ION (three-letter code: CL) (formula: Cl).

Mol	Chain	Residues	Atoms	AltConf
2	A	1	Total Cl 1 1	0
2	B	1	Total Cl 1 1	0
2	C	1	Total Cl 1 1	0

- Molecule 3 is CHOLESTEROL HEMISUCCINATE (three-letter code: Y01) (formula: C₃₁H₅₀O₄).



Mol	Chain	Residues	Atoms	AltConf
3	A	1	Total C H O 84 31 49 4	0
3	B	1	Total C H O 84 31 49 4	0

Continued on next page...

Continued from previous page...

Mol	Chain	Residues	Atoms				AltConf
			Total	C	H	O	
3	C	1	84	31	49	4	0

4 Experimental information

Property	Value	Source
EM reconstruction method	SINGLE PARTICLE	Depositor
Imposed symmetry	POINT, C3	Depositor
Number of particles used	181365	Depositor
Resolution determination method	FSC 0.143 CUT-OFF	Depositor
CTF correction method	NONE	Depositor
Microscope	TFS KRIOS	Depositor
Voltage (kV)	300	Depositor
Electron dose ($e^-/\text{\AA}^2$)	50	Depositor
Minimum defocus (nm)	700	Depositor
Maximum defocus (nm)	1900	Depositor
Magnification	105000	Depositor
Image detector	GATAN K3 BIOQUANTUM (6k x 4k)	Depositor
Maximum map value	3.135	Depositor
Minimum map value	-2.044	Depositor
Average map value	0.003	Depositor
Map value standard deviation	0.059	Depositor
Recommended contour level	0.352	Depositor
Map size (\AA)	257.4, 257.4, 257.4	wwPDB
Map dimensions	300, 300, 300	wwPDB
Map angles ($^\circ$)	90.0, 90.0, 90.0	wwPDB
Pixel spacing (\AA)	0.858, 0.858, 0.858	Depositor

5 Model quality

5.1 Standard geometry

Bond lengths and bond angles in the following residue types are not validated in this section: CL, Y01

The Z score for a bond length (or angle) is the number of standard deviations the observed value is removed from the expected value. A bond length (or angle) with $|Z| > 5$ is considered an outlier worth inspection. RMSZ is the root-mean-square of all Z scores of the bond lengths (or angles).

Mol	Chain	Bond lengths		Bond angles	
		RMSZ	# Z >5	RMSZ	# Z >5
1	A	0.24	0/3114	0.41	0/4253
1	B	0.24	0/3114	0.41	0/4253
1	C	0.24	0/3114	0.41	0/4253
All	All	0.24	0/9342	0.41	0/12759

There are no bond length outliers.

There are no bond angle outliers.

There are no chirality outliers.

There are no planarity outliers.

5.2 Too-close contacts

In the following table, the Non-H and H(model) columns list the number of non-hydrogen atoms and hydrogen atoms in the chain respectively. The H(added) column lists the number of hydrogen atoms added and optimized by MolProbity. The Clashes column lists the number of clashes within the asymmetric unit, whereas Symm-Clashes lists symmetry-related clashes.

Mol	Chain	Non-H	H(model)	H(added)	Clashes	Symm-Clashes
1	A	3010	0	3010	51	0
1	B	3010	0	3010	48	0
1	C	3010	0	3010	51	0
2	A	1	0	0	0	0
2	B	1	0	0	0	0
2	C	1	0	0	0	0
3	A	35	49	49	23	0
3	B	35	49	49	27	0
3	C	35	49	49	29	0
All	All	9138	147	9177	183	0

The all-atom clashscore is defined as the number of clashes found per 1000 atoms (including hydrogen atoms). The all-atom clashscore for this structure is 10.

The worst 5 of 183 close contacts within the same asymmetric unit are listed below, sorted by their clash magnitude.

Atom-1	Atom-2	Interatomic distance (Å)	Clash overlap (Å)
1:A:322:ARG:HG3	1:A:325:LYS:HG3	1.63	0.81
1:C:322:ARG:HG3	1:C:325:LYS:HG3	1.63	0.81
1:B:322:ARG:HG3	1:B:325:LYS:HG3	1.63	0.80
3:B:901:Y01:HAP2	3:C:901:Y01:CAQ	2.11	0.80
1:A:472:ARG:HG3	1:A:472:ARG:HH11	1.51	0.76

There are no symmetry-related clashes.

5.3 Torsion angles [i](#)

5.3.1 Protein backbone [i](#)

In the following table, the Percentiles column shows the percent Ramachandran outliers of the chain as a percentile score with respect to all PDB entries followed by that with respect to all EM entries.

The Analysed column shows the number of residues for which the backbone conformation was analysed, and the total number of residues.

Mol	Chain	Analysed	Favoured	Allowed	Outliers	Percentiles	
1	A	373/826 (45%)	367 (98%)	6 (2%)	0	100	100
1	B	373/826 (45%)	367 (98%)	6 (2%)	0	100	100
1	C	373/826 (45%)	367 (98%)	6 (2%)	0	100	100
All	All	1119/2478 (45%)	1101 (98%)	18 (2%)	0	100	100

There are no Ramachandran outliers to report.

5.3.2 Protein sidechains [i](#)

In the following table, the Percentiles column shows the percent sidechain outliers of the chain as a percentile score with respect to all PDB entries followed by that with respect to all EM entries.

The Analysed column shows the number of residues for which the sidechain conformation was analysed, and the total number of residues.

Mol	Chain	Analysed	Rotameric	Outliers	Percentiles	
1	A	319/716 (45%)	310 (97%)	9 (3%)	43	73
1	B	319/716 (45%)	310 (97%)	9 (3%)	43	73
1	C	319/716 (45%)	310 (97%)	9 (3%)	43	73
All	All	957/2148 (45%)	930 (97%)	27 (3%)	46	73

5 of 27 residues with a non-rotameric sidechain are listed below:

Mol	Chain	Res	Type
1	B	325	LYS
1	B	485	MET
1	C	366	LEU
1	B	450	PHE
1	C	108	MET

Sometimes sidechains can be flipped to improve hydrogen bonding and reduce clashes. All (3) such sidechains are listed below:

Mol	Chain	Res	Type
1	A	387	HIS
1	B	387	HIS
1	C	387	HIS

5.3.3 RNA [i](#)

There are no RNA molecules in this entry.

5.4 Non-standard residues in protein, DNA, RNA chains [i](#)

There are no non-standard protein/DNA/RNA residues in this entry.

5.5 Carbohydrates [i](#)

There are no monosaccharides in this entry.

5.6 Ligand geometry [i](#)

Of 6 ligands modelled in this entry, 3 are monoatomic - leaving 3 for Mogul analysis.

In the following table, the Counts columns list the number of bonds (or angles) for which Mogul statistics could be retrieved, the number of bonds (or angles) that are observed in the model and

the number of bonds (or angles) that are defined in the Chemical Component Dictionary. The Link column lists molecule types, if any, to which the group is linked. The Z score for a bond length (or angle) is the number of standard deviations the observed value is removed from the expected value. A bond length (or angle) with $|Z| > 2$ is considered an outlier worth inspection. RMSZ is the root-mean-square of all Z scores of the bond lengths (or angles).

Mol	Type	Chain	Res	Link	Bond lengths			Bond angles		
					Counts	RMSZ	# Z > 2	Counts	RMSZ	# Z > 2
3	Y01	C	901	-	38,38,38	2.20	10 (26%)	57,57,57	3.01	22 (38%)
3	Y01	A	902	-	38,38,38	2.20	10 (26%)	57,57,57	3.01	22 (38%)
3	Y01	B	901	-	38,38,38	2.19	10 (26%)	57,57,57	3.00	22 (38%)

In the following table, the Chirals column lists the number of chiral outliers, the number of chiral centers analysed, the number of these observed in the model and the number defined in the Chemical Component Dictionary. Similar counts are reported in the Torsion and Rings columns. '-' means no outliers of that kind were identified.

Mol	Type	Chain	Res	Link	Chirals	Torsions	Rings
3	Y01	C	901	-	-	12/19/77/77	0/4/4/4
3	Y01	A	902	-	-	12/19/77/77	0/4/4/4
3	Y01	B	901	-	-	12/19/77/77	0/4/4/4

The worst 5 of 30 bond length outliers are listed below:

Mol	Chain	Res	Type	Atoms	Z	Observed(Å)	Ideal(Å)
3	A	902	Y01	CBD-CBF	-6.69	1.40	1.53
3	B	901	Y01	CBD-CBF	-6.68	1.40	1.53
3	C	901	Y01	CBD-CBF	-6.68	1.40	1.53
3	A	902	Y01	CBH-CBF	-5.04	1.47	1.56
3	C	901	Y01	CBH-CBF	-5.01	1.47	1.56

The worst 5 of 66 bond angle outliers are listed below:

Mol	Chain	Res	Type	Atoms	Z	Observed(°)	Ideal(°)
3	A	902	Y01	CAR-CBC-CAV	-7.60	99.65	110.99
3	B	901	Y01	CAR-CBC-CAV	-7.58	99.68	110.99
3	C	901	Y01	CAR-CBC-CAV	-7.58	99.68	110.99
3	C	901	Y01	CBD-CAK-CAI	7.32	123.25	112.73
3	B	901	Y01	CBD-CAK-CAI	7.31	123.24	112.73

There are no chirality outliers.

5 of 36 torsion outliers are listed below:

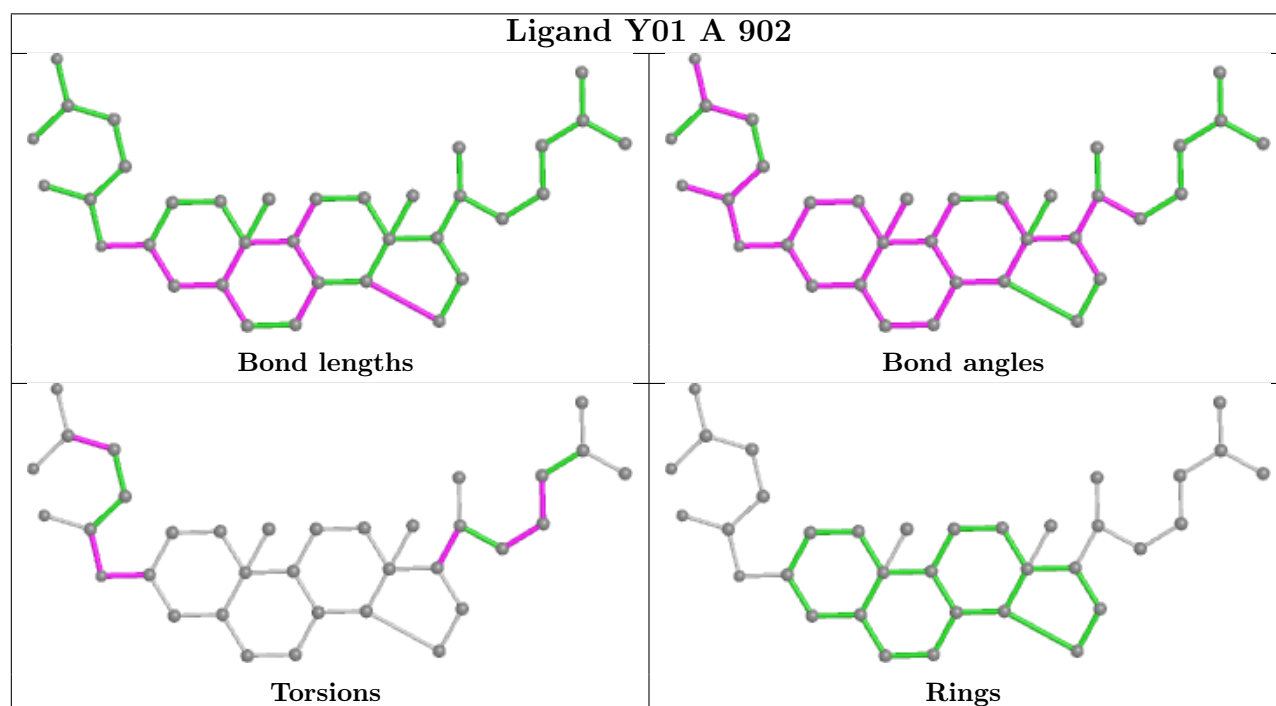
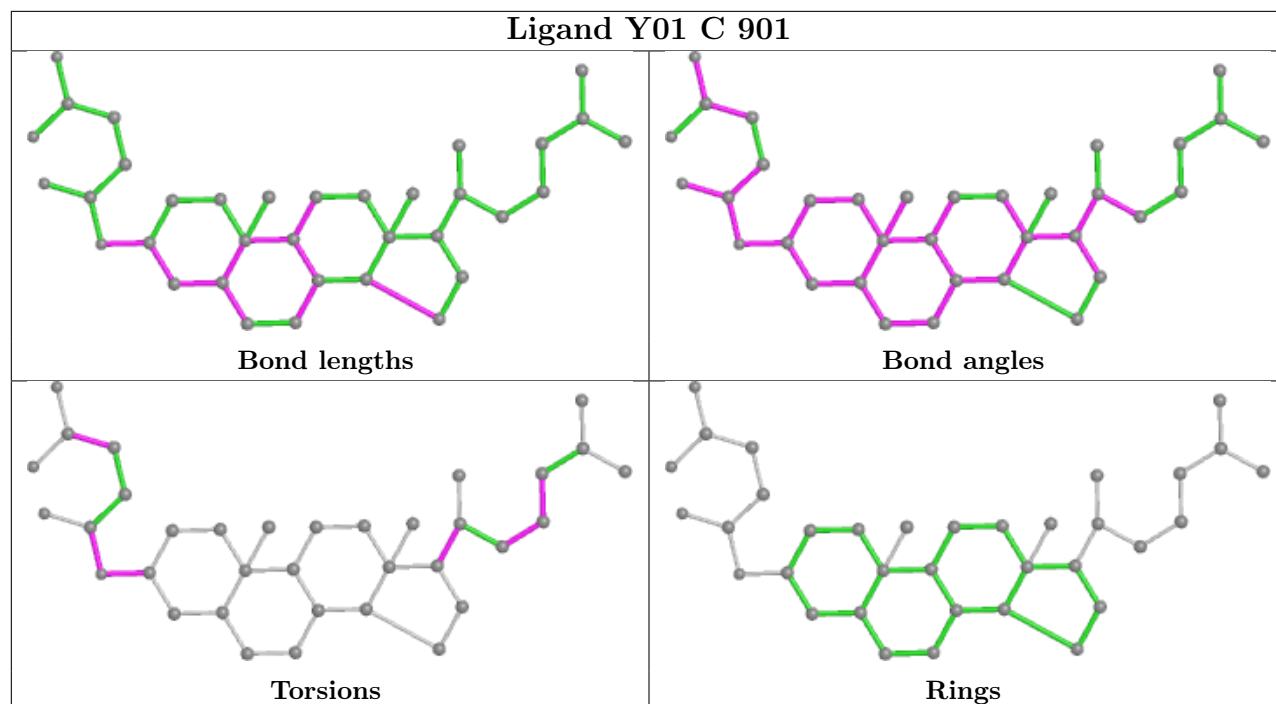
Mol	Chain	Res	Type	Atoms
3	A	902	Y01	OAG-CAY-OAW-CBC
3	A	902	Y01	CAM-CAY-OAW-CBC
3	B	901	Y01	OAG-CAY-OAW-CBC
3	B	901	Y01	CAM-CAY-OAW-CBC
3	C	901	Y01	OAG-CAY-OAW-CBC

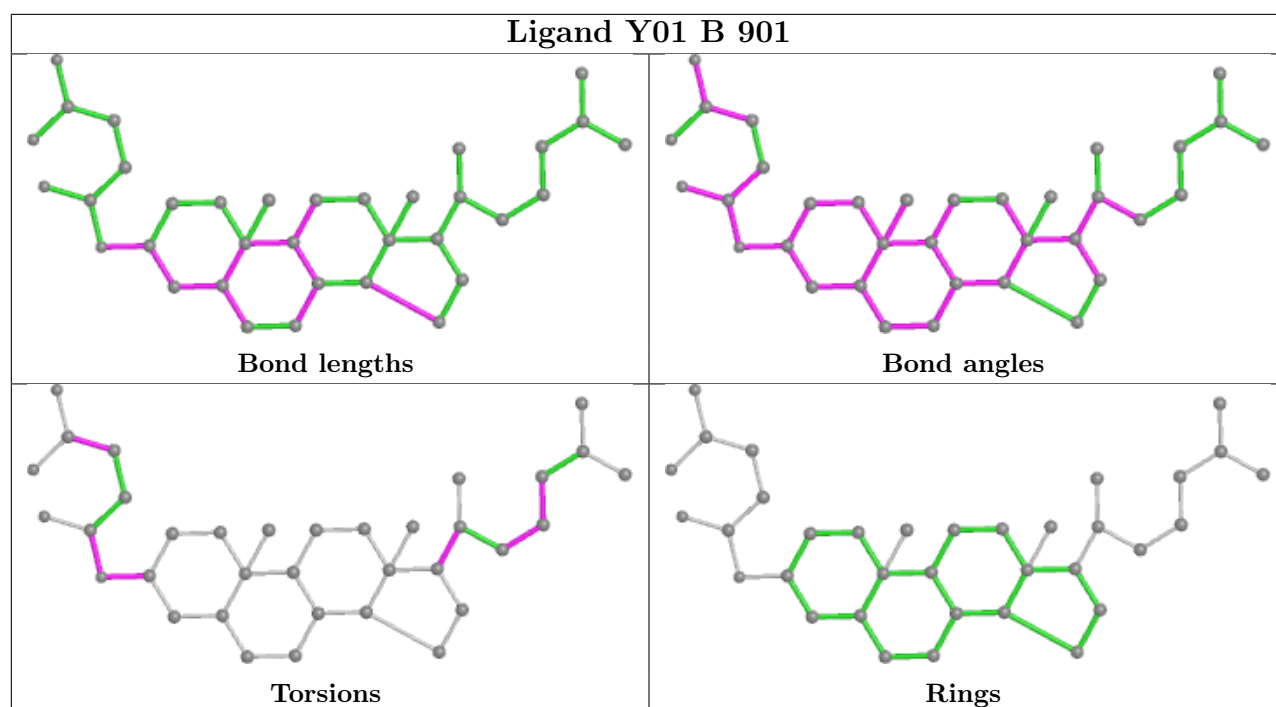
There are no ring outliers.

3 monomers are involved in 52 short contacts:

Mol	Chain	Res	Type	Clashes	Symm-Clashes
3	C	901	Y01	29	0
3	A	902	Y01	23	0
3	B	901	Y01	27	0

The following is a two-dimensional graphical depiction of Mogul quality analysis of bond lengths, bond angles, torsion angles, and ring geometry for all instances of the Ligand of Interest. In addition, ligands with molecular weight > 250 and outliers as shown on the validation Tables will also be included. For torsion angles, if less than 5% of the Mogul distribution of torsion angles is within 10 degrees of the torsion angle in question, then that torsion angle is considered an outlier. Any bond that is central to one or more torsion angles identified as an outlier by Mogul will be highlighted in the graph. For rings, the root-mean-square deviation (RMSD) between the ring in question and similar rings identified by Mogul is calculated over all ring torsion angles. If the average RMSD is greater than 60 degrees and the minimal RMSD between the ring in question and any Mogul-identified rings is also greater than 60 degrees, then that ring is considered an outlier. The outliers are highlighted in purple. The color gray indicates Mogul did not find sufficient equivalents in the CSD to analyse the geometry.





5.7 Other polymers [i](#)

There are no such residues in this entry.

5.8 Polymer linkage issues [i](#)

There are no chain breaks in this entry.

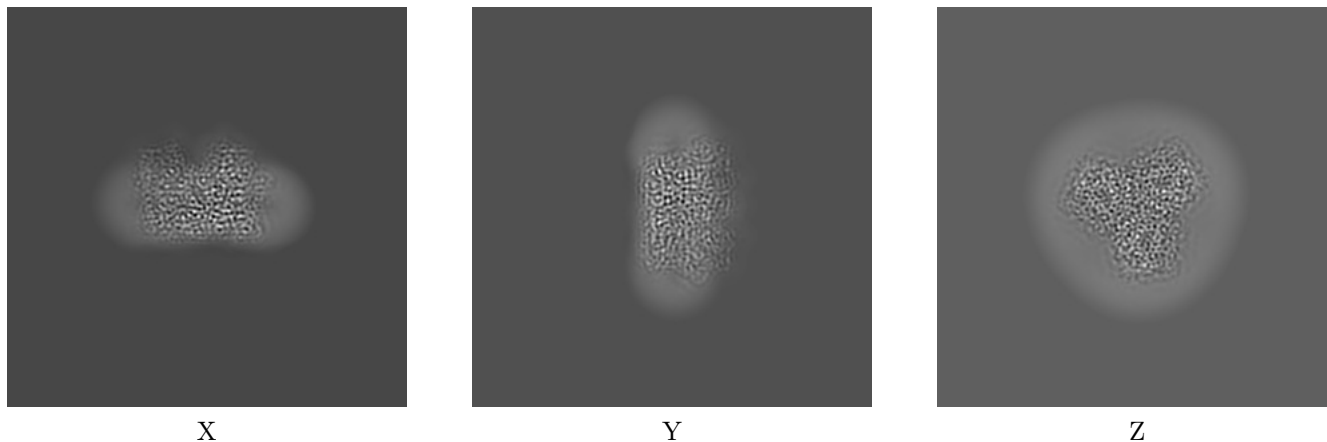
6 Map visualisation [i](#)

This section contains visualisations of the EMDB entry EMD-35904. These allow visual inspection of the internal detail of the map and identification of artifacts.

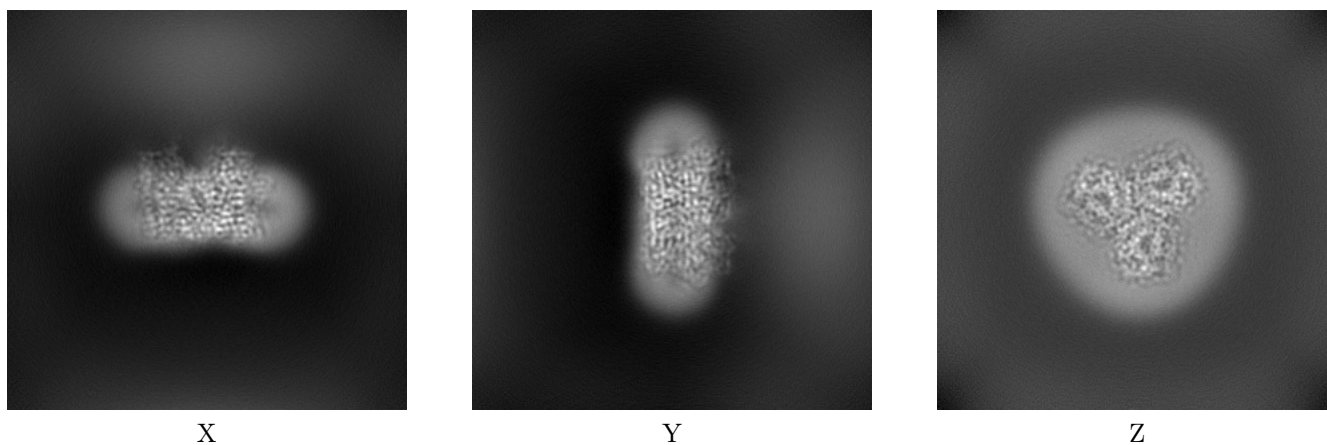
Images derived from a raw map, generated by summing the deposited half-maps, are presented below the corresponding image components of the primary map to allow further visual inspection and comparison with those of the primary map.

6.1 Orthogonal projections [i](#)

6.1.1 Primary map



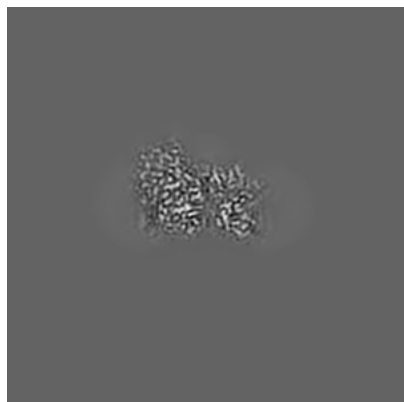
6.1.2 Raw map



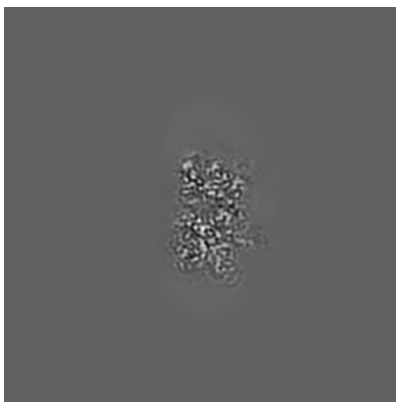
The images above show the map projected in three orthogonal directions.

6.2 Central slices [i](#)

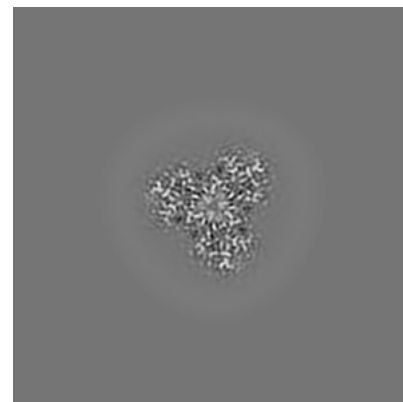
6.2.1 Primary map



X Index: 150

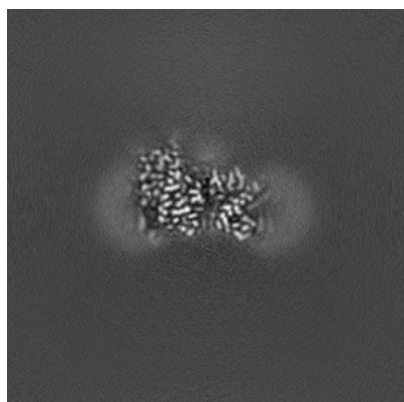


Y Index: 150

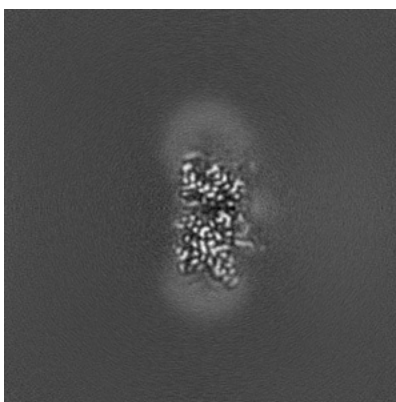


Z Index: 150

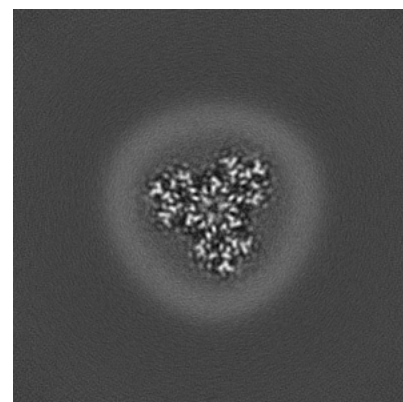
6.2.2 Raw map



X Index: 150



Y Index: 150

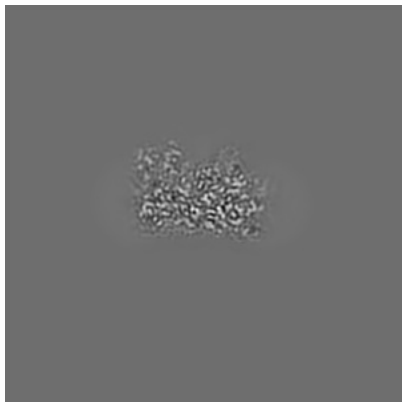


Z Index: 150

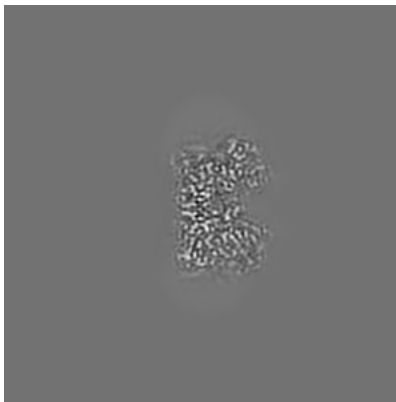
The images above show central slices of the map in three orthogonal directions.

6.3 Largest variance slices [i](#)

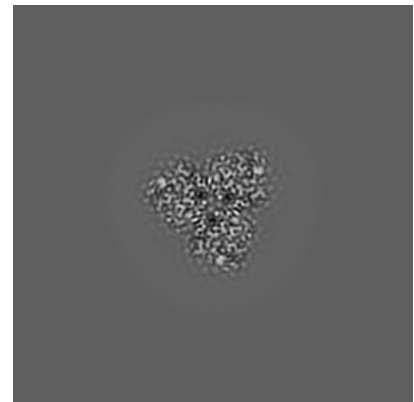
6.3.1 Primary map



X Index: 160

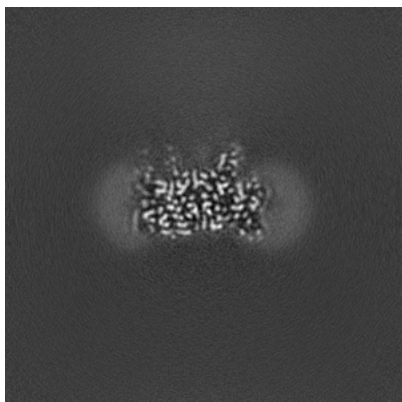


Y Index: 164

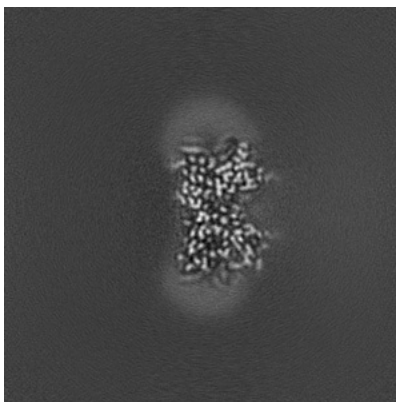


Z Index: 142

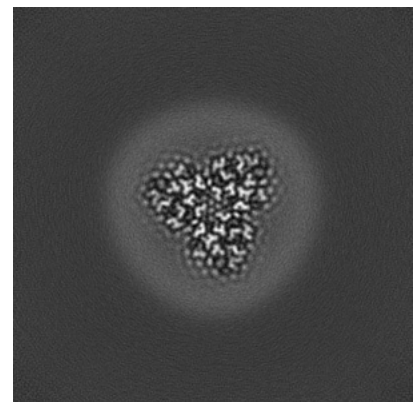
6.3.2 Raw map



X Index: 165



Y Index: 162

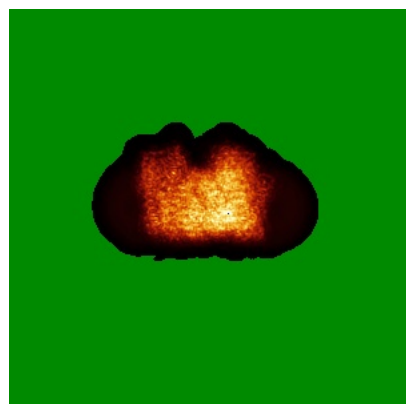


Z Index: 141

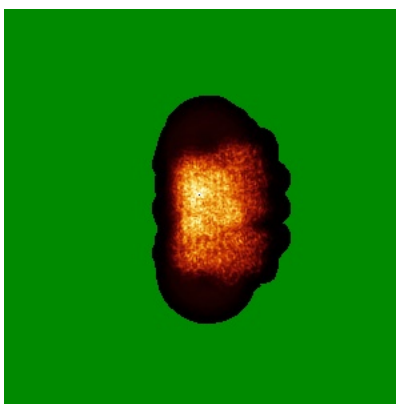
The images above show the largest variance slices of the map in three orthogonal directions.

6.4 Orthogonal standard-deviation projections (False-color) [i](#)

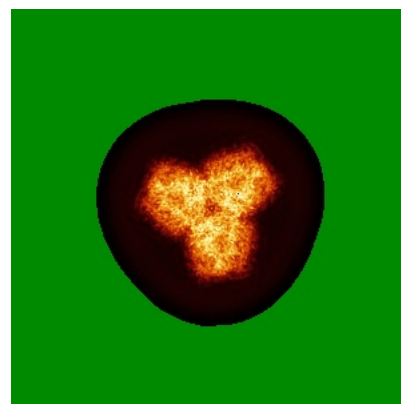
6.4.1 Primary map



X

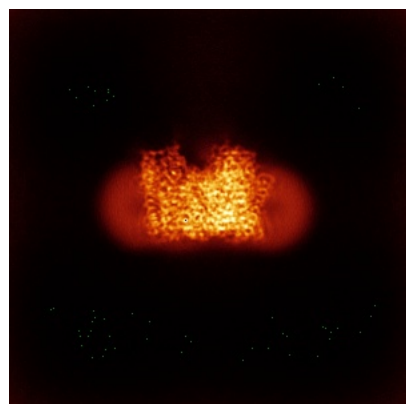


Y

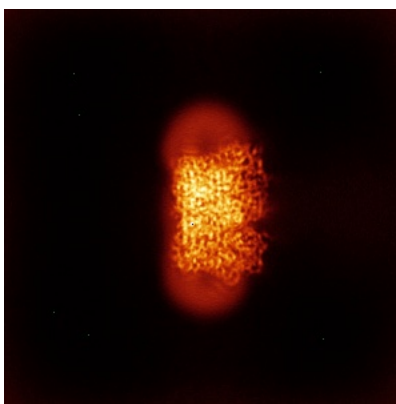


Z

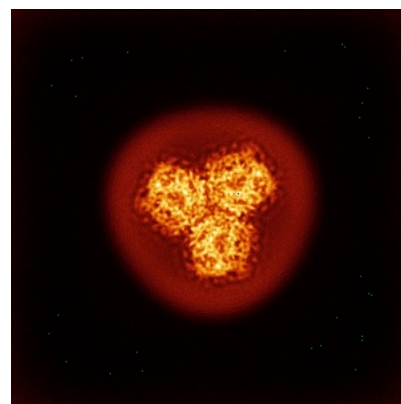
6.4.2 Raw map



X



Y

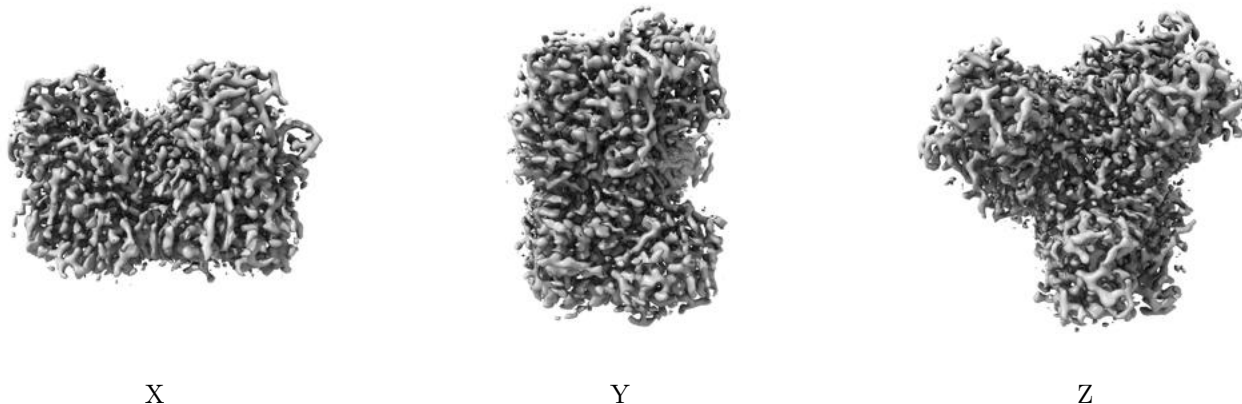


Z

The images above show the map standard deviation projections with false color in three orthogonal directions. Minimum values are shown in green, max in blue, and dark to light orange shades represent small to large values respectively.

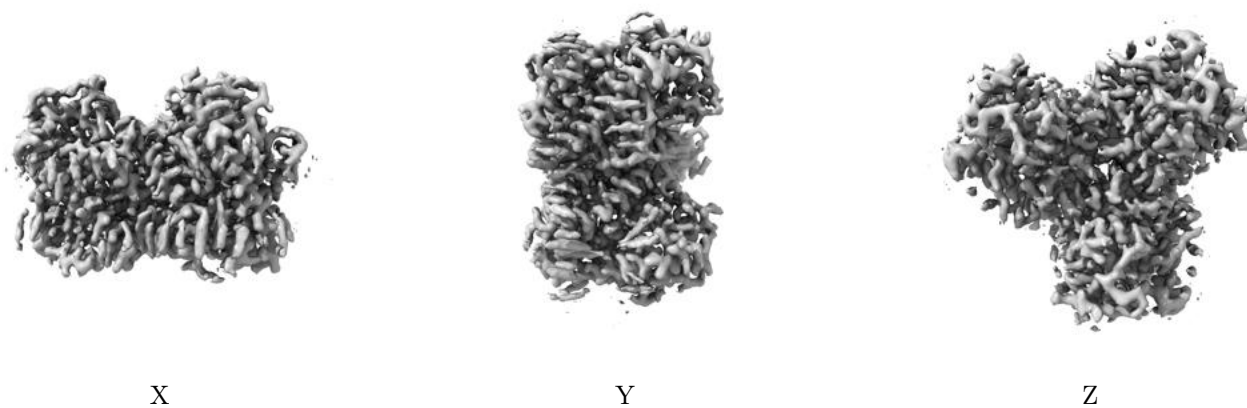
6.5 Orthogonal surface views [i](#)

6.5.1 Primary map



The images above show the 3D surface view of the map at the recommended contour level 0.352. These images, in conjunction with the slice images, may facilitate assessment of whether an appropriate contour level has been provided.

6.5.2 Raw map



These images show the 3D surface of the raw map. The raw map's contour level was selected so that its surface encloses the same volume as the primary map does at its recommended contour level.

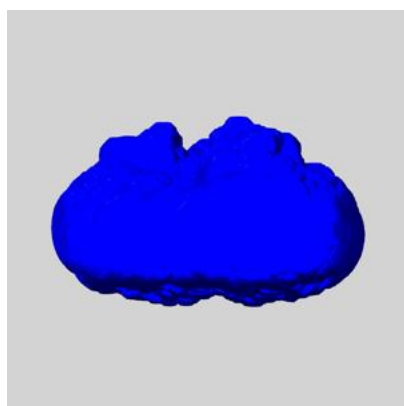
6.6 Mask visualisation [i](#)

This section shows the 3D surface view of the primary map at 50% transparency overlaid with the specified mask at 0% transparency

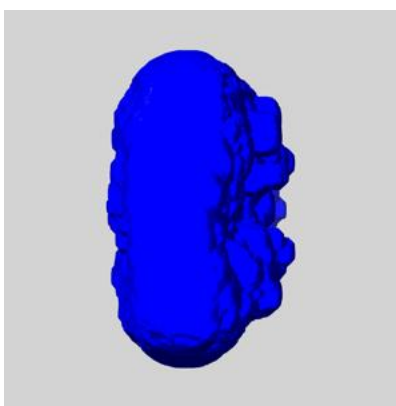
A mask typically either:

- Encompasses the whole structure
- Separates out a domain, a functional unit, a monomer or an area of interest from a larger structure

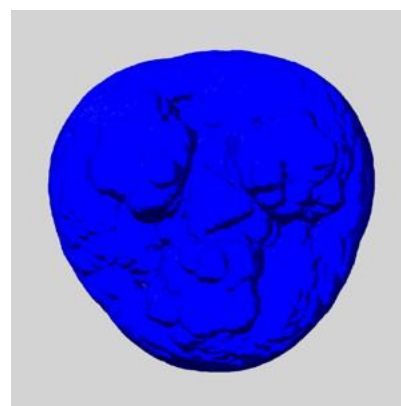
6.6.1 emd_35904_msk_1.map [i](#)



X



Y

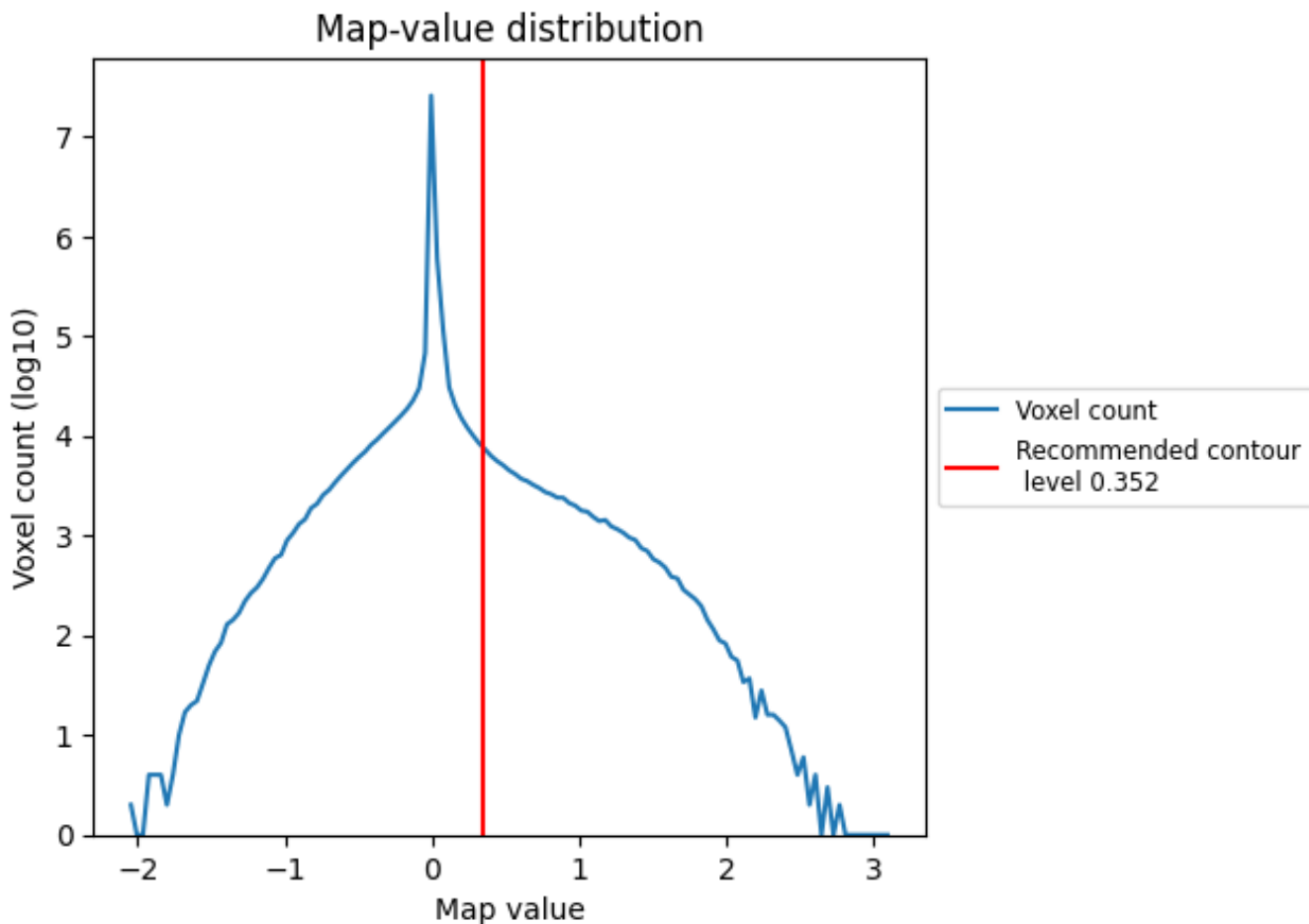


Z

7 Map analysis [i](#)

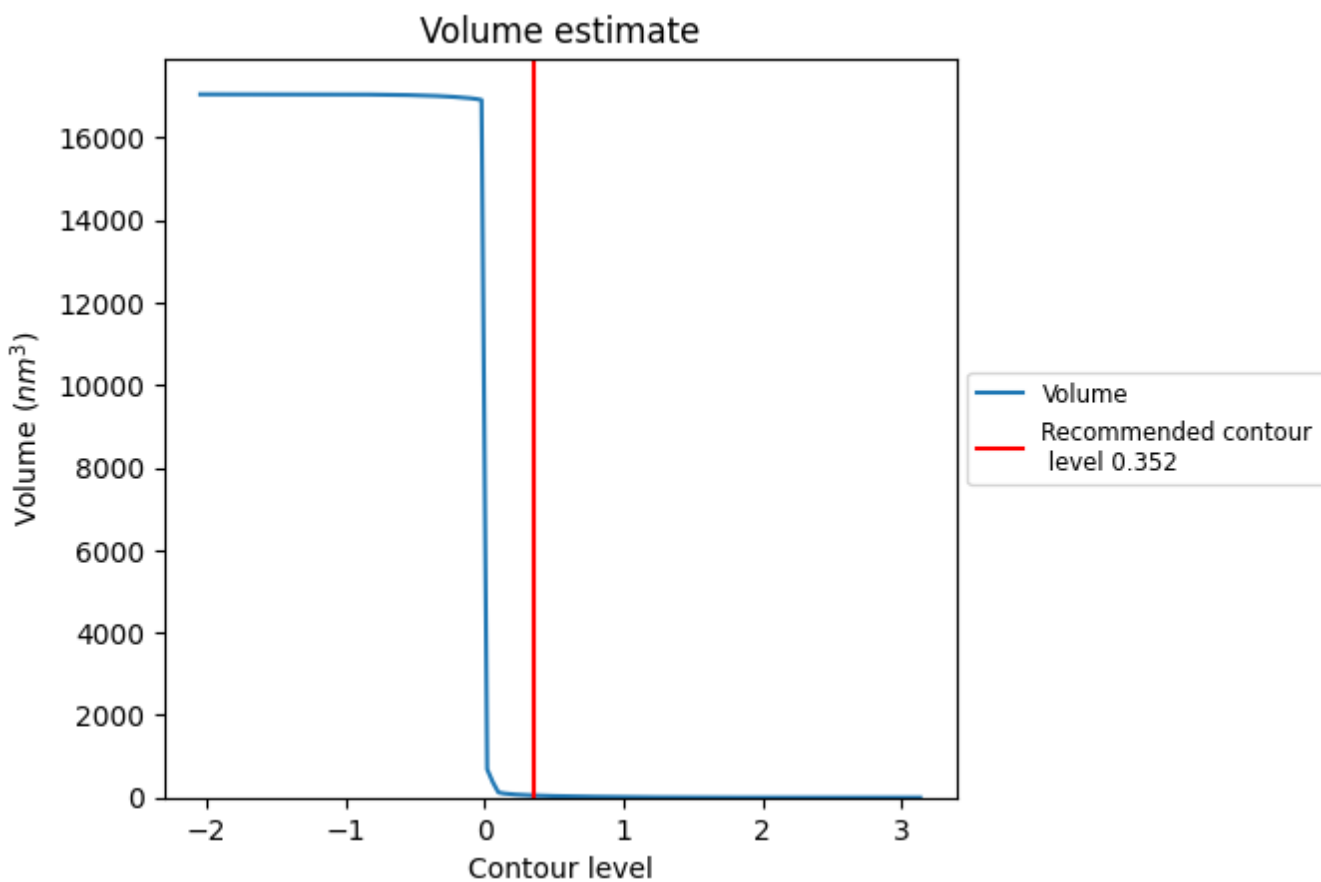
This section contains the results of statistical analysis of the map.

7.1 Map-value distribution [i](#)



The map-value distribution is plotted in 128 intervals along the x-axis. The y-axis is logarithmic. A spike in this graph at zero usually indicates that the volume has been masked.

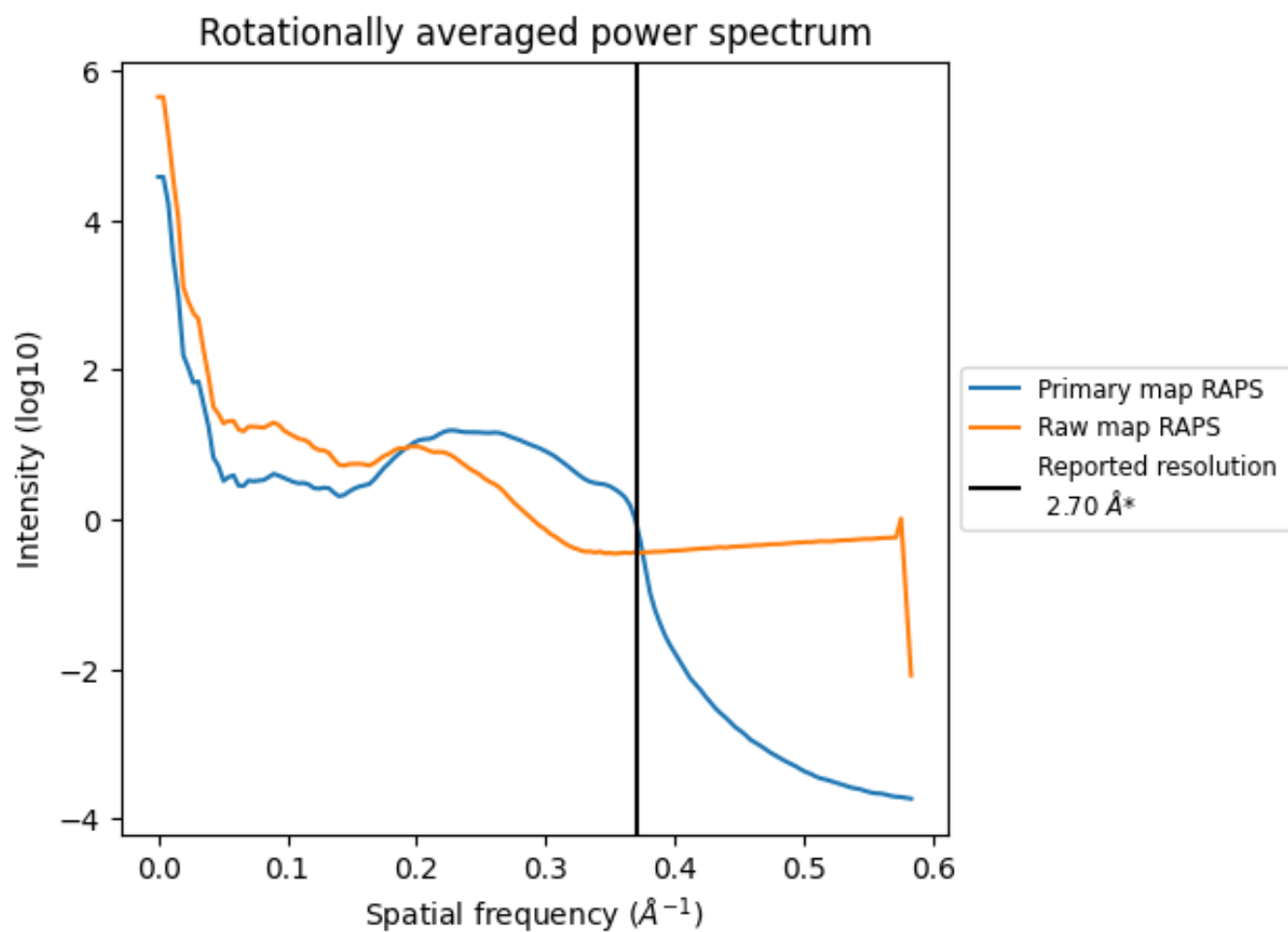
7.2 Volume estimate [\(i\)](#)



The volume at the recommended contour level is 51 nm³; this corresponds to an approximate mass of 46 kDa.

The volume estimate graph shows how the enclosed volume varies with the contour level. The recommended contour level is shown as a vertical line and the intersection between the line and the curve gives the volume of the enclosed surface at the given level.

7.3 Rotationally averaged power spectrum i

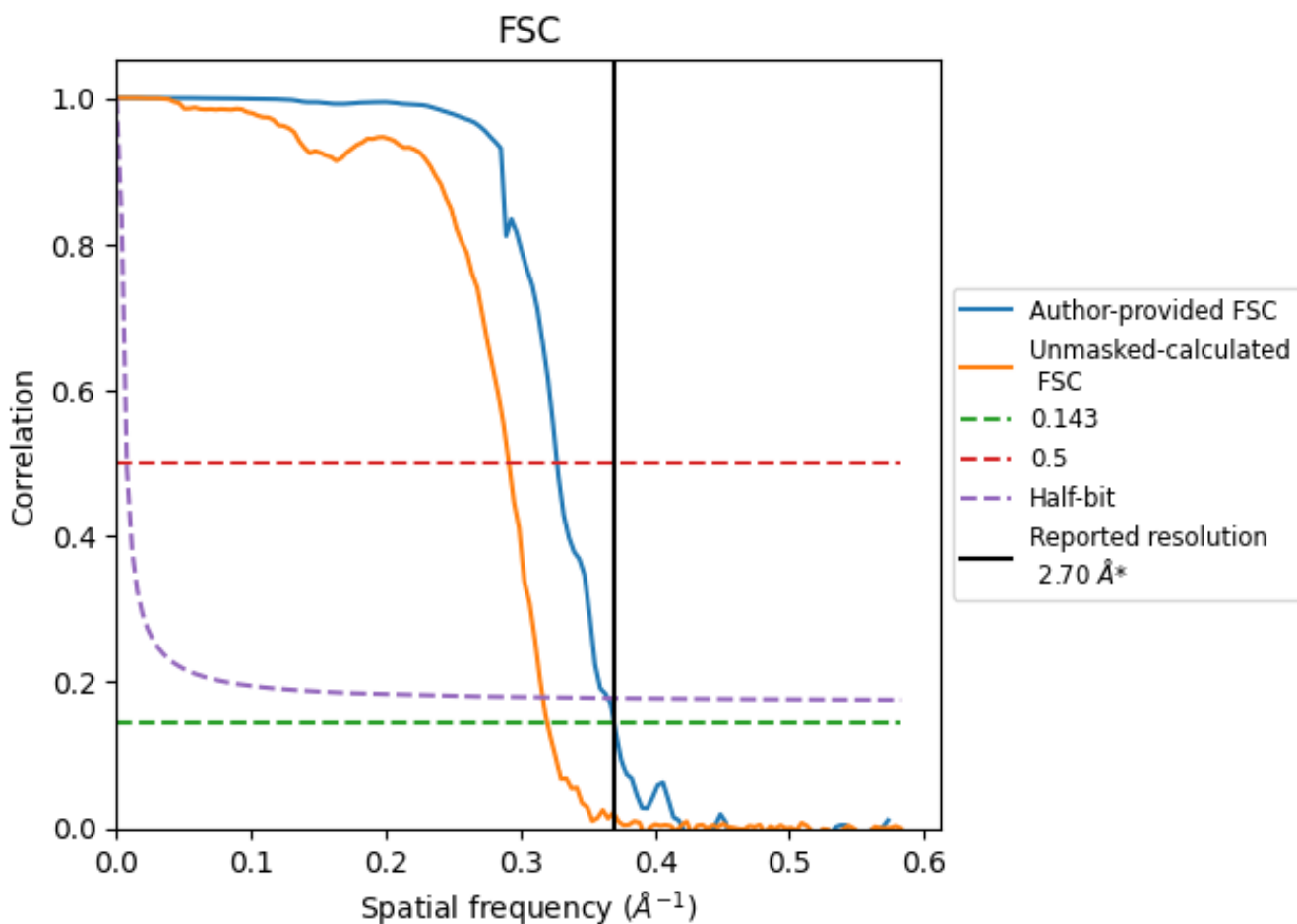


*Reported resolution corresponds to spatial frequency of 0.370 Å⁻¹

8 Fourier-Shell correlation [i](#)

Fourier-Shell Correlation (FSC) is the most commonly used method to estimate the resolution of single-particle and subtomogram-averaged maps. The shape of the curve depends on the imposed symmetry, mask and whether or not the two 3D reconstructions used were processed from a common reference. The reported resolution is shown as a black line. A curve is displayed for the half-bit criterion in addition to lines showing the 0.143 gold standard cut-off and 0.5 cut-off.

8.1 FSC [i](#)



*Reported resolution corresponds to spatial frequency of 0.370 Å⁻¹

8.2 Resolution estimates

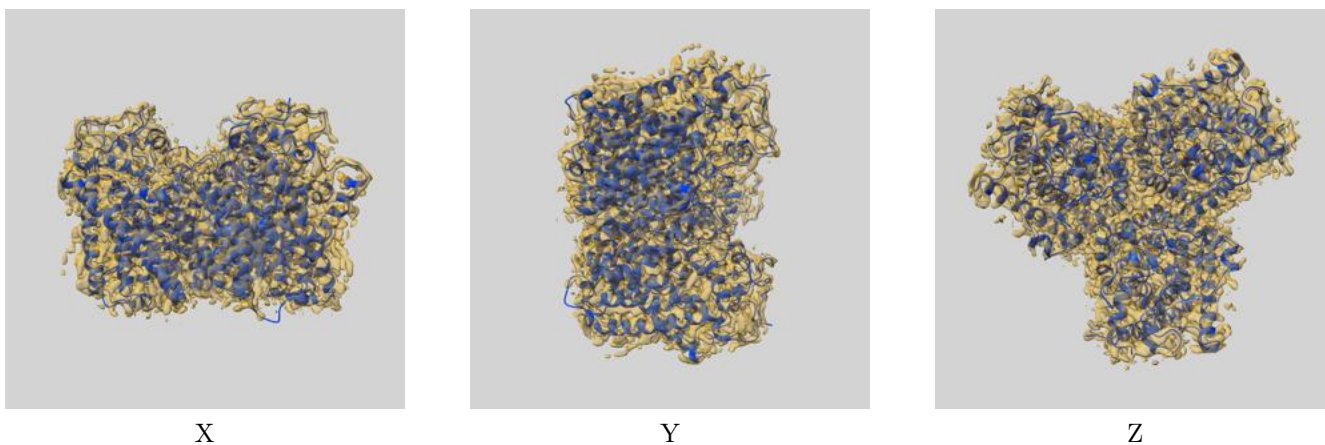
Resolution estimate (Å)	Estimation criterion (FSC cut-off)		
	0.143	0.5	Half-bit
Reported by author	2.70	-	-
Author-provided FSC curve	2.70	3.06	2.74
Unmasked-calculated*	3.12	3.43	3.16

*Resolution estimate based on FSC curve calculated by comparison of deposited half-maps. The value from deposited half-maps intersecting FSC 0.143 CUT-OFF 3.12 differs from the reported value 2.7 by more than 10 %

9 Map-model fit [i](#)

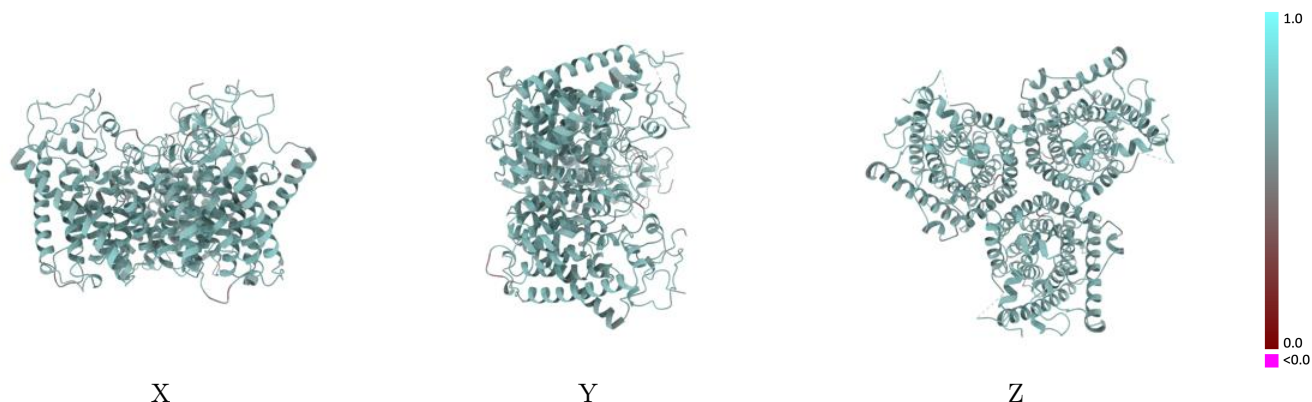
This section contains information regarding the fit between EMDB map EMD-35904 and PDB model 8J0J. Per-residue inclusion information can be found in section 3 on page 9.

9.1 Map-model overlay [i](#)



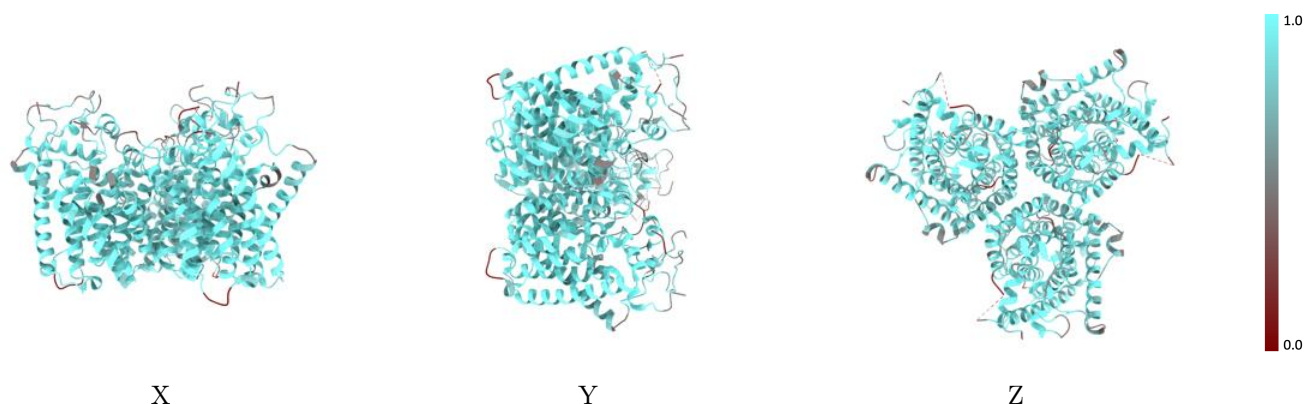
The images above show the 3D surface view of the map at the recommended contour level 0.352 at 50% transparency in yellow overlaid with a ribbon representation of the model coloured in blue. These images allow for the visual assessment of the quality of fit between the atomic model and the map.

9.2 Q-score mapped to coordinate model [i](#)



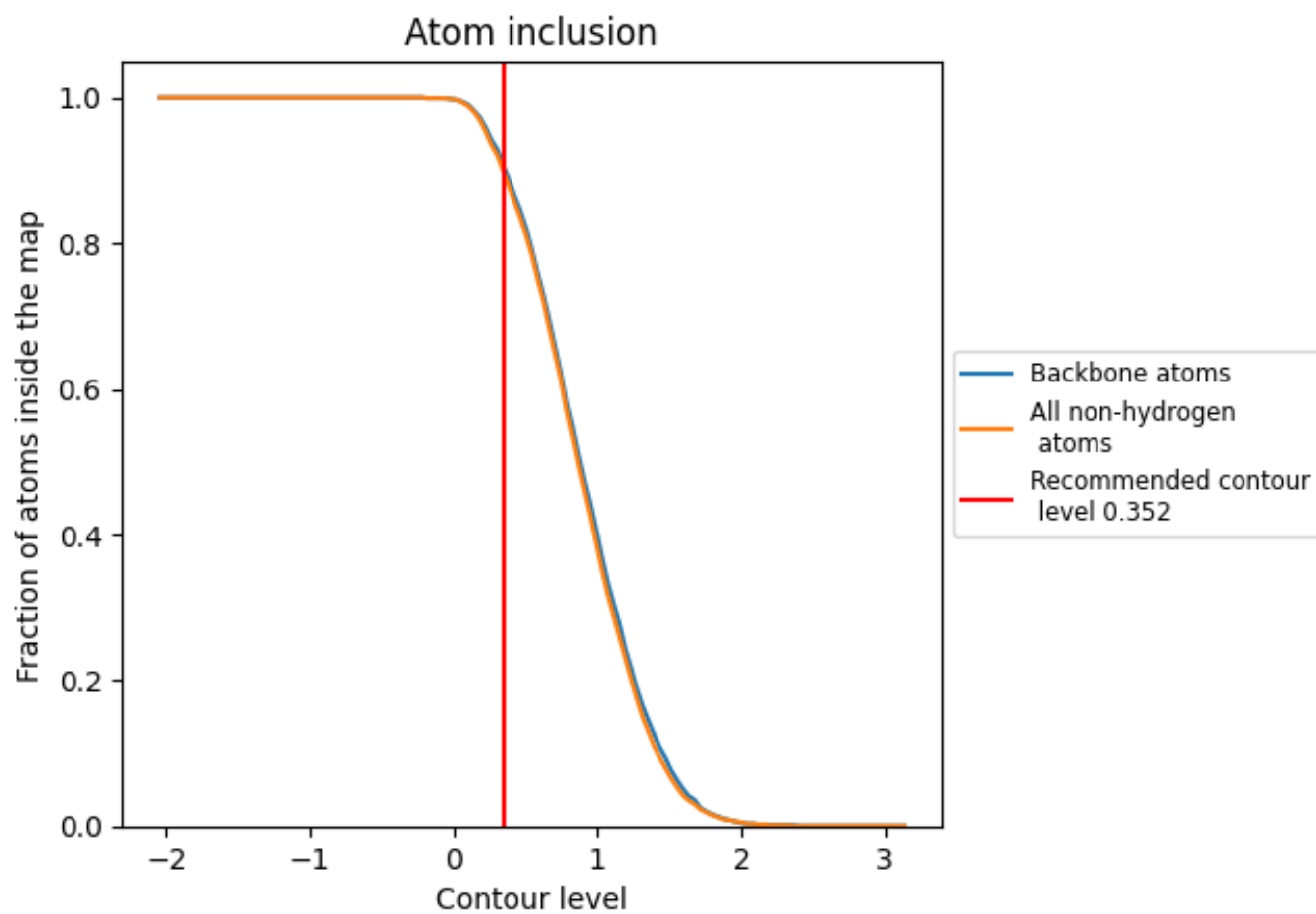
The images above show the model with each residue coloured according to its Q-score. This shows their resolvability in the map with higher Q-score values reflecting better resolvability. Please note: Q-score is calculating the resolvability of atoms, and thus high values are only expected at resolutions at which atoms can be resolved. Low Q-score values may therefore be expected for many entries.

9.3 Atom inclusion mapped to coordinate model [i](#)



The images above show the model with each residue coloured according to its atom inclusion. This shows to what extent they are inside the map at the recommended contour level (0.352).





9.4 Atom inclusion [i](#)



At the recommended contour level, 90% of all backbone atoms, 90% of all non-hydrogen atoms, are inside the map.

9.5 Map-model fit summary

The table lists the average atom inclusion at the recommended contour level (0.352) and Q-score for the entire model and for each chain.

Chain	Atom inclusion	Q-score
All	 0.8960	 0.6400
A	 0.8950	 0.6420
B	 0.8930	 0.6390
C	 0.8950	 0.6390

