



wwPDB X-ray Structure Validation Summary Report ⓘ

May 23, 2020 – 11:00 pm BST

PDB ID : 2J04
Title : The tau60-tau91 subcomplex of yeast transcription factor IIIC
Authors : Mylona, A.; Fernandez-Tornero, C.; Legrand, P.; Muller, C.W.
Deposited on : 2006-07-31
Resolution : 3.20 Å(reported)

This is a wwPDB X-ray Structure Validation Summary Report for a publicly released PDB entry.

We welcome your comments at validation@mail.wwpdb.org

A user guide is available at

<https://www.wwpdb.org/validation/2017/XrayValidationReportHelp>

with specific help available everywhere you see the ⓘ symbol.

The following versions of software and data (see [references ⓘ](#)) were used in the production of this report:

MolProbity : 4.02b-467
Xtriage (Phenix) : 1.13
EDS : 2.11
Percentile statistics : 20191225.v01 (using entries in the PDB archive December 25th 2019)
Refmac : 5.8.0158
CCP4 : 7.0.044 (Gargrove)
Ideal geometry (proteins) : Engh & Huber (2001)
Ideal geometry (DNA, RNA) : Parkinson et al. (1996)
Validation Pipeline (wwPDB-VP) : 2.11

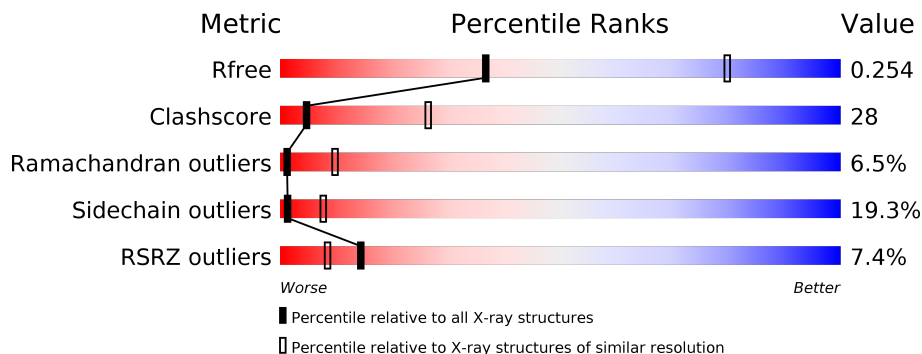
1 Overall quality at a glance

The following experimental techniques were used to determine the structure:

X-RAY DIFFRACTION

The reported resolution of this entry is 3.20 Å.

Percentile scores (ranging between 0-100) for global validation metrics of the entry are shown in the following graphic. The table shows the number of entries on which the scores are based.



Metric	Whole archive (#Entries)	Similar resolution (#Entries, resolution range(Å))
R_{free}	130704	1133 (3.20-3.20)
Clashscore	141614	1253 (3.20-3.20)
Ramachandran outliers	138981	1234 (3.20-3.20)
Sidechain outliers	138945	1233 (3.20-3.20)
RSRZ outliers	127900	1095 (3.20-3.20)

The table below summarises the geometric issues observed across the polymeric chains and their fit to the electron density. The red, orange, yellow and green segments on the lower bar indicate the fraction of residues that contain outliers for ≥ 3 , 2, 1 and 0 types of geometric quality criteria respectively. A grey segment represents the fraction of residues that are not modelled. The numeric value for each fraction is indicated below the corresponding segment, with a dot representing fractions $\leq 5\%$. The upper red bar (where present) indicates the fraction of residues that have poor fit to the electron density. The numeric value is given above the bar.

Mol	Chain	Length	Quality of chain
1	A	588	 7% 52% 34% 11% •
1	C	588	 7% 48% 36% 13% •
2	B	524	 7% 43% 32% 13% • 10%
2	D	524	 6% 43% 33% 12% • 10%

2 Entry composition

There are 3 unique types of molecules in this entry. The entry contains 16935 atoms, of which 0 are hydrogens and 0 are deuteriums.

In the tables below, the ZeroOcc column contains the number of atoms modelled with zero occupancy, the AltConf column contains the number of residues with at least one atom in alternate conformation and the Trace column contains the number of residues modelled with at most 2 atoms.

- Molecule 1 is a protein called HYPOTHETICAL PROTEIN YPL007C.

Mol	Chain	Residues	Atoms					ZeroOcc	AltConf	Trace
			Total	C	N	O	S			
1	A	587	4760	3058	777	902	23	0	0	0
1	C	586	4751	3052	775	901	23	0	0	0

- Molecule 2 is a protein called YDR362CP.

Mol	Chain	Residues	Atoms					ZeroOcc	AltConf	Trace
			Total	C	N	O	S			
2	B	472	3715	2384	613	703	15	0	0	1
2	D	469	3704	2379	609	701	15	0	0	1

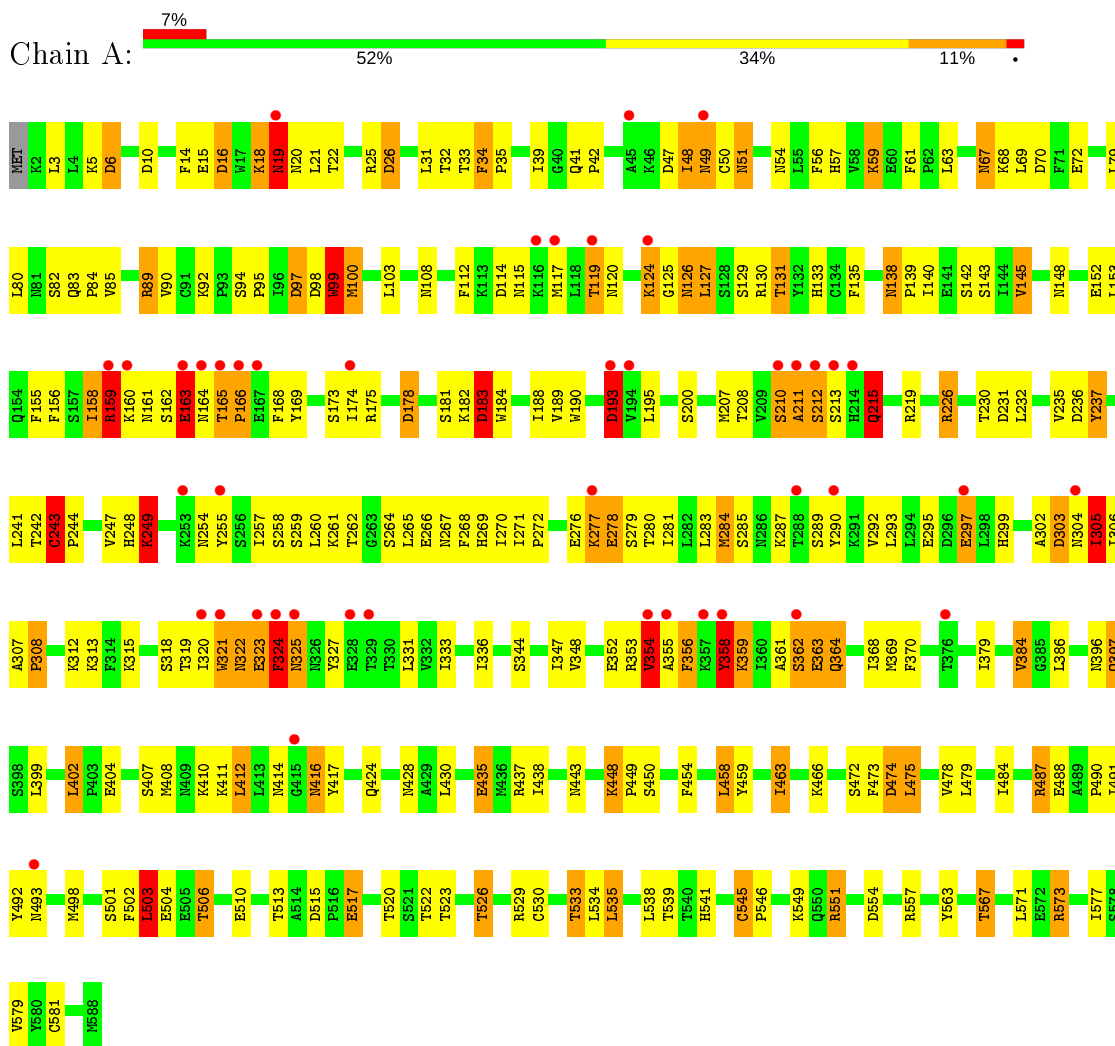
- Molecule 3 is water.

Mol	Chain	Residues	Atoms	ZeroOcc	AltConf
3	A	2	Total 2 O 2	0	0
3	B	1	Total 1 O 1	0	0
3	C	1	Total 1 O 1	0	0
3	D	1	Total 1 O 1	0	0

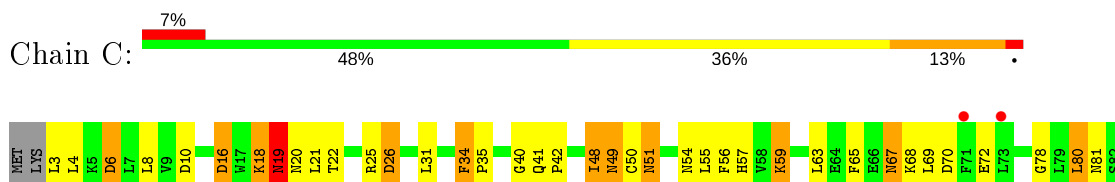
3 Residue-property plots

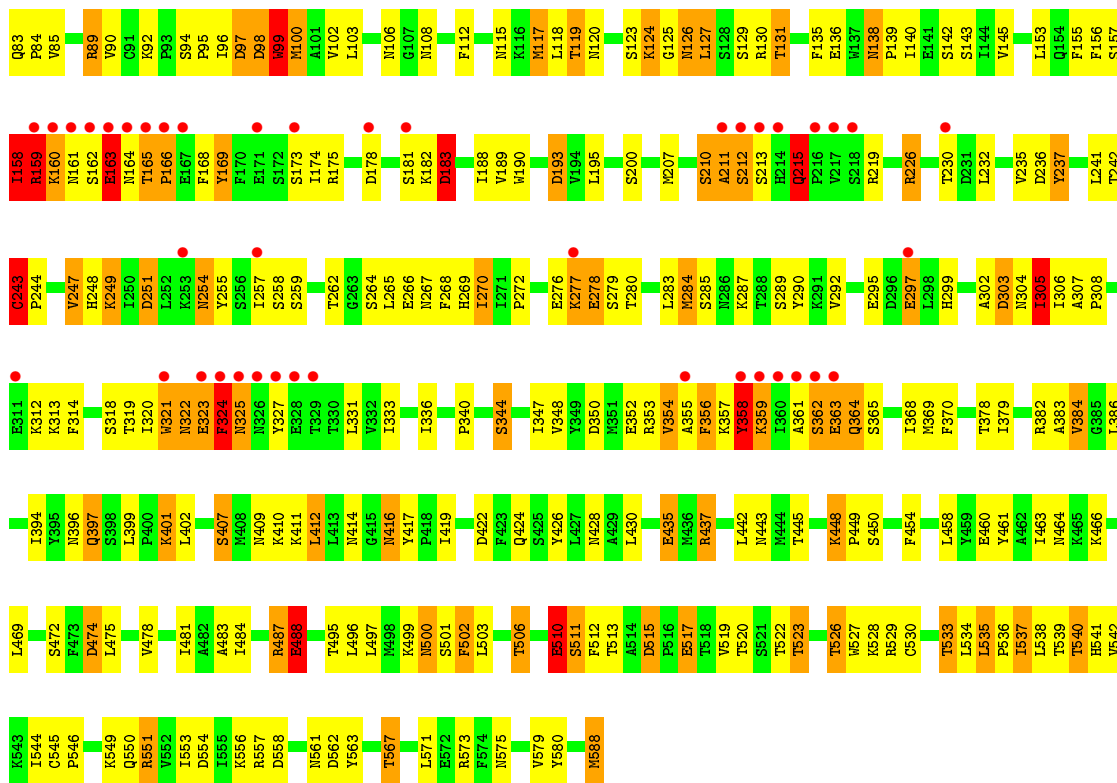
These plots are drawn for all protein, RNA and DNA chains in the entry. The first graphic for a chain summarises the proportions of the various outlier classes displayed in the second graphic. The second graphic shows the sequence view annotated by issues in geometry and electron density. Residues are color-coded according to the number of geometric quality criteria for which they contain at least one outlier: green = 0, yellow = 1, orange = 2 and red = 3 or more. A red dot above a residue indicates a poor fit to the electron density ($RSRZ > 2$). Stretches of 2 or more consecutive residues without any outlier are shown as a green connector. Residues present in the sample, but not in the model, are shown in grey.

• Molecule 1: HYPOTHETICAL PROTEIN YPL007C

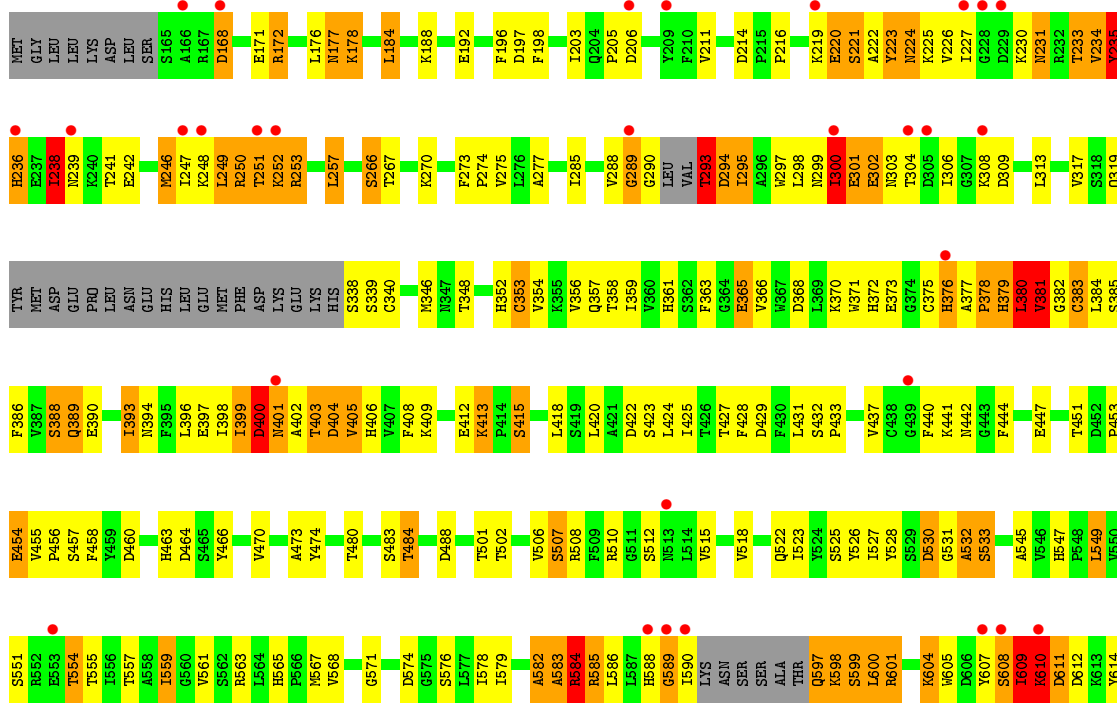


• Molecule 1: HYPOTHETICAL PROTEIN YPL007C



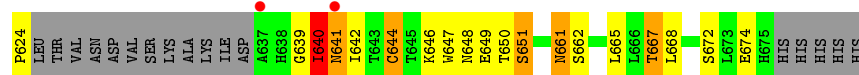
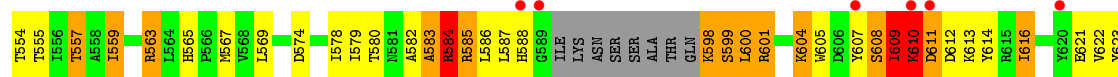
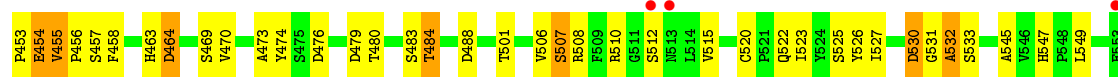
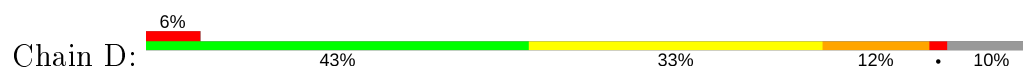


• Molecule 2: YDR362CP





• Molecule 2: YDR362CP



4 Data and refinement statistics

Property	Value	Source
Space group	P 1 21 1	Depositor
Cell constants a, b, c, α , β , γ	61.42Å 125.80Å 210.47Å 90.00° 94.49° 90.00°	Depositor
Resolution (Å)	208.51 – 3.20 34.91 – 3.20	Depositor EDS
% Data completeness (in resolution range)	98.7 (208.51-3.20) 98.8 (34.91-3.20)	Depositor EDS
R_{merge}	0.10	Depositor
R_{sym}	(Not available)	Depositor
$\langle I/\sigma(I) \rangle$ ¹	2.06 (at 3.18Å)	Xtrriage
Refinement program	REFMAC 5.2.0019	Depositor
R, R_{free}	0.212 , 0.257 0.209 , 0.254	Depositor DCC
R_{free} test set	2619 reflections (5.03%)	wwPDB-VP
Wilson B-factor (Å ²)	77.5	Xtrriage
Anisotropy	0.356	Xtrriage
Bulk solvent k_{sol} (e/Å ³), B_{sol} (Å ²)	0.33 , 130.4	EDS
L-test for twinning ²	$\langle L \rangle = 0.48$, $\langle L^2 \rangle = 0.30$	Xtrriage
Estimated twinning fraction	No twinning to report.	Xtrriage
F_o, F_c correlation	0.93	EDS
Total number of atoms	16935	wwPDB-VP
Average B, all atoms (Å ²)	70.0	wwPDB-VP

Xtrriage's analysis on translational NCS is as follows: *The largest off-origin peak in the Patterson function is 3.63% of the height of the origin peak. No significant pseudotranslation is detected.*

¹Intensities estimated from amplitudes.

²Theoretical values of $\langle |L| \rangle$, $\langle L^2 \rangle$ for acentric reflections are 0.5, 0.333 respectively for untwinned datasets, and 0.375, 0.2 for perfectly twinned datasets.

5 Model quality i

5.1 Standard geometry i

The Z score for a bond length (or angle) is the number of standard deviations the observed value is removed from the expected value. A bond length (or angle) with $|Z| > 5$ is considered an outlier worth inspection. RMSZ is the root-mean-square of all Z scores of the bond lengths (or angles).

Mol	Chain	Bond lengths		Bond angles	
		RMSZ	# Z >5	RMSZ	# Z >5
1	A	0.83	5/4872 (0.1%)	0.94	15/6610 (0.2%)
1	C	0.80	5/4863 (0.1%)	0.95	16/6599 (0.2%)
2	B	0.76	4/3798 (0.1%)	0.98	21/5153 (0.4%)
2	D	0.77	4/3788 (0.1%)	0.95	15/5140 (0.3%)
All	All	0.79	18/17321 (0.1%)	0.95	67/23502 (0.3%)

Chiral center outliers are detected by calculating the chiral volume of a chiral center and verifying if the center is modelled as a planar moiety or with the opposite hand. A planarity outlier is detected by checking planarity of atoms in a peptide group, atoms in a mainchain group or atoms of a sidechain that are expected to be planar.

Mol	Chain	#Chirality outliers	#Planarity outliers
1	A	0	2
1	C	0	3
2	B	0	8
2	D	0	7
All	All	0	20

The worst 5 of 18 bond length outliers are listed below:

Mol	Chain	Res	Type	Atoms	Z	Observed(Å)	Ideal(Å)
2	D	413	LYS	CD-CE	18.55	1.97	1.51
2	B	413	LYS	CD-CE	14.62	1.87	1.51
1	A	249	LYS	CD-CE	13.65	1.85	1.51
1	A	297	GLU	CD-OE1	11.57	1.38	1.25
1	C	249	LYS	CD-CE	11.35	1.79	1.51

The worst 5 of 67 bond angle outliers are listed below:

Mol	Chain	Res	Type	Atoms	Z	Observed(°)	Ideal(°)
2	D	413	LYS	CD-CE-NZ	-8.44	92.29	111.70
2	B	413	LYS	CD-CE-NZ	-8.38	92.42	111.70
2	D	413	LYS	CG-CD-CE	-7.55	89.24	111.90

Continued on next page...

Continued from previous page...

Mol	Chain	Res	Type	Atoms	Z	Observed($^{\circ}$)	Ideal($^{\circ}$)
1	C	6	ASP	CB-CG-OD2	7.20	124.78	118.30
1	A	231	ASP	CB-CG-OD2	7.00	124.60	118.30

There are no chirality outliers.

5 of 20 planarity outliers are listed below:

Mol	Chain	Res	Type	Group
1	A	243	CYS	Peptide
1	A	98	ASP	Peptide
2	B	277	ALA	Peptide
2	B	293	THR	Peptide
2	B	379	HIS	Peptide

5.2 Too-close contacts [i](#)

In the following table, the Non-H and H(model) columns list the number of non-hydrogen atoms and hydrogen atoms in the chain respectively. The H(added) column lists the number of hydrogen atoms added and optimized by MolProbity. The Clashes column lists the number of clashes within the asymmetric unit, whereas Symm-Clashes lists symmetry related clashes.

Mol	Chain	Non-H	H(model)	H(added)	Clashes	Symm-Clashes
1	A	4760	0	4722	220	0
1	C	4751	0	4709	244	0
2	B	3715	0	3674	258	0
2	D	3704	0	3660	238	0
3	A	2	0	0	0	0
3	B	1	0	0	0	0
3	C	1	0	0	0	0
3	D	1	0	0	0	0
All	All	16935	0	16765	942	0

The all-atom clashscore is defined as the number of clashes found per 1000 atoms (including hydrogen atoms). The all-atom clashscore for this structure is 28.

The worst 5 of 942 close contacts within the same asymmetric unit are listed below, sorted by their clash magnitude.

Atom-1	Atom-2	Interatomic distance (\AA)	Clash overlap (\AA)
1:C:249:LYS:CD	1:C:249:LYS:CE	1.79	1.60
2:B:413:LYS:CD	2:B:413:LYS:CE	1.87	1.52

Continued on next page...

Continued from previous page...

Atom-1	Atom-2	Interatomic distance (Å)	Clash overlap (Å)
1:A:249:LYS:CE	1:A:249:LYS:CD	1.85	1.50
2:B:413:LYS:NZ	2:B:413:LYS:CE	1.74	1.47
2:D:413:LYS:CE	2:D:413:LYS:NZ	1.76	1.45

There are no symmetry-related clashes.

5.3 Torsion angles [i](#)

5.3.1 Protein backbone [i](#)

In the following table, the Percentiles column shows the percent Ramachandran outliers of the chain as a percentile score with respect to all X-ray entries followed by that with respect to entries of similar resolution.

The Analysed column shows the number of residues for which the backbone conformation was analysed, and the total number of residues.

Mol	Chain	Analysed	Favoured	Allowed	Outliers	Percentiles	
1	A	585/588 (100%)	475 (81%)	74 (13%)	36 (6%)	1	11
1	C	584/588 (99%)	475 (81%)	69 (12%)	40 (7%)	1	9
2	B	462/524 (88%)	362 (78%)	68 (15%)	32 (7%)	1	8
2	D	459/524 (88%)	356 (78%)	76 (17%)	27 (6%)	1	12
All	All	2090/2224 (94%)	1668 (80%)	287 (14%)	135 (6%)	1	10

5 of 135 Ramachandran outliers are listed below:

Mol	Chain	Res	Type
1	A	80	LEU
1	A	124	LYS
1	A	159	ARG
1	A	164	ASN
1	A	166	PRO

5.3.2 Protein sidechains [i](#)

In the following table, the Percentiles column shows the percent sidechain outliers of the chain as a percentile score with respect to all X-ray entries followed by that with respect to entries of similar resolution.

The Analysed column shows the number of residues for which the sidechain conformation was

analysed, and the total number of residues.

Mol	Chain	Analysed	Rotameric	Outliers	Percentiles	
1	A	543/544 (100%)	434 (80%)	109 (20%)	1	6
1	C	542/544 (100%)	434 (80%)	108 (20%)	1	6
2	B	415/465 (89%)	340 (82%)	75 (18%)	1	8
2	D	414/465 (89%)	336 (81%)	78 (19%)	1	8
All	All	1914/2018 (95%)	1544 (81%)	370 (19%)	1	8

5 of 370 residues with a non-rotameric sidechain are listed below:

Mol	Chain	Res	Type
2	B	549	LEU
1	C	159	ARG
2	D	455	VAL
2	B	586	LEU
1	C	22	THR

Some sidechains can be flipped to improve hydrogen bonding and reduce clashes. 5 of 60 such sidechains are listed below:

Mol	Chain	Res	Type
2	B	641	ASN
1	C	106	ASN
2	D	565	HIS
1	C	41	GLN
1	C	138	ASN

5.3.3 RNA [i](#)

There are no RNA molecules in this entry.

5.4 Non-standard residues in protein, DNA, RNA chains [i](#)

There are no non-standard protein/DNA/RNA residues in this entry.

5.5 Carbohydrates [i](#)

There are no carbohydrates in this entry.

5.6 Ligand geometry [i](#)

There are no ligands in this entry.

5.7 Other polymers [i](#)

There are no such residues in this entry.

5.8 Polymer linkage issues [i](#)

There are no chain breaks in this entry.

6 Fit of model and data [i](#)

6.1 Protein, DNA and RNA chains [i](#)

In the following table, the column labelled '#RSRZ > 2' contains the number (and percentage) of RSRZ outliers, followed by percent RSRZ outliers for the chain as percentile scores relative to all X-ray entries and entries of similar resolution. The OWAB column contains the minimum, median, 95th percentile and maximum values of the occupancy-weighted average B-factor per residue. The column labelled 'Q < 0.9' lists the number of (and percentage) of residues with an average occupancy less than 0.9.

Mol	Chain	Analysed	<RSRZ>	#RSRZ > 2	OWAB(Å ²)	Q < 0.9
1	A	587/588 (99%)	0.44	44 (7%) 14 8	61, 71, 71, 81	0
1	C	586/588 (99%)	0.49	43 (7%) 15 9	60, 71, 71, 87	0
2	B	472/524 (90%)	0.63	36 (7%) 13 7	70, 71, 71, 72	0
2	D	469/524 (89%)	0.60	33 (7%) 16 9	71, 71, 71, 75	0
All	All	2114/2224 (95%)	0.53	156 (7%) 14 8	60, 71, 71, 87	0

The worst 5 of 156 RSRZ outliers are listed below:

Mol	Chain	Res	Type	RSRZ
1	C	211	ALA	6.5
2	D	589	GLY	6.1
1	C	325	ASN	5.8
1	A	328	GLU	5.7
1	C	324	PHE	5.6

6.2 Non-standard residues in protein, DNA, RNA chains [i](#)

There are no non-standard protein/DNA/RNA residues in this entry.

6.3 Carbohydrates [i](#)

There are no carbohydrates in this entry.

6.4 Ligands [i](#)

There are no ligands in this entry.

6.5 Other polymers

There are no such residues in this entry.