



wwPDB EM Validation Summary Report ⓘ

Dec 23, 2024 – 12:27 PM JST

PDB ID : 9IXM
EMDB ID : EMD-60973
Title : Cryo-EM structure of Lactobacillus casei DdmDE bound with DNA
Authors : Huang, P.P.; Chen, M.R.; Xiao, Y.B.
Deposited on : 2024-07-29
Resolution : 3.26 Å (reported)

This is a wwPDB EM Validation Summary Report for a publicly released PDB entry.

We welcome your comments at validation@mail.wwpdb.org

A user guide is available at

<https://www.wwpdb.org/validation/2017/EMValidationReportHelp>

with specific help available everywhere you see the ⓘ symbol.

The types of validation reports are described at

<http://www.wwpdb.org/validation/2017/FAQs#types>.

The following versions of software and data (see [references ⓘ](#)) were used in the production of this report:

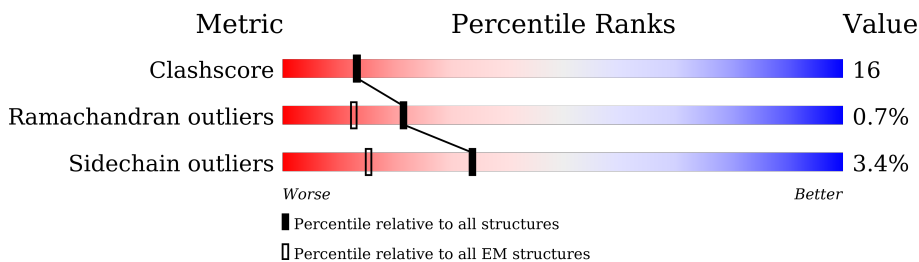
EMDB validation analysis : 0.0.1.dev113
MolProbity : 4.02b-467
Percentile statistics : 20231227.v01 (using entries in the PDB archive December 27th 2023)
MapQ : 1.9.13
Ideal geometry (proteins) : Engh & Huber (2001)
Ideal geometry (DNA, RNA) : Parkinson et al. (1996)
Validation Pipeline (wwPDB-VP) : 2.40

1 Overall quality at a glance

The following experimental techniques were used to determine the structure:
ELECTRON MICROSCOPY

The reported resolution of this entry is 3.26 Å.

Percentile scores (ranging between 0-100) for global validation metrics of the entry are shown in the following graphic. The table shows the number of entries on which the scores are based.



Metric	Whole archive (#Entries)	EM structures (#Entries)
Clashscore	210492	15764
Ramachandran outliers	207382	16835
Sidechain outliers	206894	16415

The table below summarises the geometric issues observed across the polymeric chains and their fit to the map. The red, orange, yellow and green segments of the bar indicate the fraction of residues that contain outliers for ≥ 3 , 2, 1 and 0 types of geometric quality criteria respectively. A grey segment represents the fraction of residues that are not modelled. The numeric value for each fraction is indicated below the corresponding segment, with a dot representing fractions $\leq 5\%$. The upper red bar (where present) indicates the fraction of residues that have poor fit to the EM map (all-atom inclusion $< 40\%$). The numeric value is given above the bar.

Mol	Chain	Length	Quality of chain
1	A	1192	
1	C	1192	
2	B	715	
3	E	30	
4	D	15	
5	F	30	

2 Entry composition [i](#)

There are 6 unique types of molecules in this entry. The entry contains 20925 atoms, of which 0 are hydrogens and 0 are deuteriums.

In the tables below, the AltConf column contains the number of residues with at least one atom in alternate conformation and the Trace column contains the number of residues modelled with at most 2 atoms.

- Molecule 1 is a protein called DdmD.

Mol	Chain	Residues	Atoms					AltConf	Trace
			Total	C	N	O	S		
1	A	1169	9459	6029	1635	1766	29	0	0
1	C	521	4076	2606	706	752	12	0	0

There are 38 discrepancies between the modelled and reference sequences:

Chain	Residue	Modelled	Actual	Comment	Reference
A	7	SER	LEU	conflict	UNP A0A5R8LS59
A	46	ILE	VAL	conflict	UNP A0A5R8LS59
A	115	SER	ASN	conflict	UNP A0A5R8LS59
A	154	GLU	ASP	conflict	UNP A0A5R8LS59
A	174	LYS	ARG	conflict	UNP A0A5R8LS59
A	179	ALA	GLU	conflict	UNP A0A5R8LS59
A	187	ASP	ASN	conflict	UNP A0A5R8LS59
A	313	PHE	SER	conflict	UNP A0A5R8LS59
A	468	HIS	TYR	conflict	UNP A0A5R8LS59
A	575	GLU	GLN	conflict	UNP A0A5R8LS59
A	681	ASP	GLU	conflict	UNP A0A5R8LS59
A	704	ILE	VAL	conflict	UNP A0A5R8LS59
A	762	ARG	PRO	conflict	UNP A0A5R8LS59
A	859	PRO	THR	conflict	UNP A0A5R8LS59
A	1090	VAL	ALA	conflict	UNP A0A5R8LS59
A	1101	ASP	ASN	conflict	UNP A0A5R8LS59
A	1106	ALA	VAL	conflict	UNP A0A5R8LS59
A	1140	ARG	GLN	conflict	UNP A0A5R8LS59
A	1165	THR	MET	conflict	UNP A0A5R8LS59
C	7	SER	LEU	conflict	UNP A0A5R8LS59
C	46	ILE	VAL	conflict	UNP A0A5R8LS59
C	115	SER	ASN	conflict	UNP A0A5R8LS59
C	154	GLU	ASP	conflict	UNP A0A5R8LS59
C	174	LYS	ARG	conflict	UNP A0A5R8LS59
C	179	ALA	GLU	conflict	UNP A0A5R8LS59
C	187	ASP	ASN	conflict	UNP A0A5R8LS59

Continued on next page...

Continued from previous page...

Chain	Residue	Modelled	Actual	Comment	Reference
C	313	PHE	SER	conflict	UNP A0A5R8LS59
C	468	HIS	TYR	conflict	UNP A0A5R8LS59
C	575	GLU	GLN	conflict	UNP A0A5R8LS59
C	681	ASP	GLU	conflict	UNP A0A5R8LS59
C	704	ILE	VAL	conflict	UNP A0A5R8LS59
C	762	ARG	PRO	conflict	UNP A0A5R8LS59
C	859	PRO	THR	conflict	UNP A0A5R8LS59
C	1090	VAL	ALA	conflict	UNP A0A5R8LS59
C	1101	ASP	ASN	conflict	UNP A0A5R8LS59
C	1106	ALA	VAL	conflict	UNP A0A5R8LS59
C	1140	ARG	GLN	conflict	UNP A0A5R8LS59
C	1165	THR	MET	conflict	UNP A0A5R8LS59

- Molecule 2 is a protein called DdmE.

Mol	Chain	Residues	Atoms					AltConf	Trace
			Total	C	N	O	S		
2	B	713	5848	3737	1025	1064	22	0	0

- Molecule 3 is a DNA chain called DNA (30-MER).

Mol	Chain	Residues	Atoms					AltConf	Trace
			Total	C	N	O	P		
3	E	30	614	293	115	176	30	0	0

- Molecule 4 is a DNA chain called DNA (5'-D(P*TP*GP*AP*CP*GP*GP*CP*TP*CP*TP*AP*AP*TP*CP*T)-3').

Mol	Chain	Residues	Atoms					AltConf	Trace
			Total	C	N	O	P		
4	D	15	305	146	52	92	15	0	0

- Molecule 5 is a DNA chain called DNA (30-MER).

Mol	Chain	Residues	Atoms					AltConf	Trace
			Total	C	N	O	P		
5	F	30	622	296	118	178	30	0	0

- Molecule 6 is MAGNESIUM ION (three-letter code: MG) (formula: Mg) (labeled as "Ligand of Interest" by depositor).

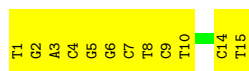
Mol	Chain	Residues	Atoms		AltConf
6	D	1	Total	Mg	0
			1	1	

3 Residue-property plots

These plots are drawn for all protein, RNA, DNA and oligosaccharide chains in the entry. The first graphic for a chain summarises the proportions of the various outlier classes displayed in the second graphic. The second graphic shows the sequence view annotated by issues in geometry and atom inclusion in map density. Residues are color-coded according to the number of geometric quality criteria for which they contain at least one outlier: green = 0, yellow = 1, orange = 2 and red = 3 or more. A red diamond above a residue indicates a poor fit to the EM map for this residue (all-atom inclusion < 40%). Stretches of 2 or more consecutive residues without any outlier are shown as a green connector. Residues present in the sample, but not in the model, are shown in grey.

• Molecule 1: DdmD





● Molecule 5: DNA (30-MER)



4 Experimental information

Property	Value	Source
EM reconstruction method	SINGLE PARTICLE	Depositor
Imposed symmetry	POINT, Not provided	
Number of particles used	94045	Depositor
Resolution determination method	FSC 0.143 CUT-OFF	Depositor
CTF correction method	PHASE FLIPPING AND AMPLITUDE CORRECTION	Depositor
Microscope	TFS KRIOS	Depositor
Voltage (kV)	300	Depositor
Electron dose ($e^-/\text{\AA}^2$)	45	Depositor
Minimum defocus (nm)	800	Depositor
Maximum defocus (nm)	2000	Depositor
Magnification	Not provided	
Image detector	FEI FALCON IV (4k x 4k)	Depositor
Maximum map value	0.736	Depositor
Minimum map value	-0.356	Depositor
Average map value	0.005	Depositor
Map value standard deviation	0.017	Depositor
Recommended contour level	0.12	Depositor
Map size (Å)	357.888, 357.888, 357.888	wwPDB
Map dimensions	384, 384, 384	wwPDB
Map angles (°)	90.0, 90.0, 90.0	wwPDB
Pixel spacing (Å)	0.932, 0.932, 0.932	Depositor

5 Model quality [i](#)

5.1 Standard geometry [i](#)

Bond lengths and bond angles in the following residue types are not validated in this section: MG

The Z score for a bond length (or angle) is the number of standard deviations the observed value is removed from the expected value. A bond length (or angle) with $|Z| > 5$ is considered an outlier worth inspection. RMSZ is the root-mean-square of all Z scores of the bond lengths (or angles).

Mol	Chain	Bond lengths		Bond angles	
		RMSZ	# Z >5	RMSZ	# Z >5
1	A	0.27	0/9652	0.56	12/13017 (0.1%)
1	C	0.29	0/4143	0.62	8/5573 (0.1%)
2	B	0.26	0/5972	0.56	7/8060 (0.1%)
3	E	0.59	0/689	0.95	0/1060
4	D	0.52	0/340	0.83	0/522
5	F	0.73	4/699 (0.6%)	0.87	0/1078
All	All	0.32	4/21495 (0.0%)	0.61	27/29310 (0.1%)

All (4) bond length outliers are listed below:

Mol	Chain	Res	Type	Atoms	Z	Observed(Å)	Ideal(Å)
5	F	30	DT	C1'-N1	5.91	1.56	1.49
5	F	17	DT	C1'-N1	5.54	1.56	1.49
5	F	16	DC	C1'-N1	5.03	1.55	1.49
5	F	7	DT	C1'-N1	5.01	1.55	1.49

The worst 5 of 27 bond angle outliers are listed below:

Mol	Chain	Res	Type	Atoms	Z	Observed(°)	Ideal(°)
1	A	427	MET	CB-CA-C	-15.31	79.79	110.40
1	A	139	ASN	N-CA-C	10.53	139.44	111.00
2	B	407	GLU	CB-CA-C	7.66	125.71	110.40
1	A	139	ASN	CB-CA-C	-7.38	95.64	110.40
1	C	429	ILE	CB-CA-C	-7.32	96.96	111.60

There are no chirality outliers.

There are no planarity outliers.

5.2 Too-close contacts [i](#)

In the following table, the Non-H and H(model) columns list the number of non-hydrogen atoms and hydrogen atoms in the chain respectively. The H(added) column lists the number of hydrogen atoms added and optimized by MolProbity. The Clashes column lists the number of clashes within the asymmetric unit, whereas Symm-Clashes lists symmetry-related clashes.

Mol	Chain	Non-H	H(model)	H(added)	Clashes	Symm-Clashes
1	A	9459	0	9382	273	0
1	C	4076	0	3971	166	0
2	B	5848	0	5916	139	0
3	E	614	0	338	67	0
4	D	305	0	171	14	0
5	F	622	0	339	58	0
6	D	1	0	0	0	0
All	All	20925	0	20117	653	0

The all-atom clashscore is defined as the number of clashes found per 1000 atoms (including hydrogen atoms). The all-atom clashscore for this structure is 16.

The worst 5 of 653 close contacts within the same asymmetric unit are listed below, sorted by their clash magnitude.

Atom-1	Atom-2	Interatomic distance (Å)	Clash overlap (Å)
1:C:480:LEU:CD1	1:C:797:ILE:HG21	1.55	1.35
1:A:186:LEU:HD11	1:A:239:PHE:CD2	1.67	1.27
1:C:473:ARG:NH1	1:C:805:ASP:O	1.65	1.27
1:C:480:LEU:CD1	1:C:797:ILE:CG2	2.12	1.27
1:C:480:LEU:HD11	1:C:797:ILE:CG2	1.65	1.26

There are no symmetry-related clashes.

5.3 Torsion angles [i](#)

5.3.1 Protein backbone [i](#)

In the following table, the Percentiles column shows the percent Ramachandran outliers of the chain as a percentile score with respect to all PDB entries followed by that with respect to all EM entries.

The Analysed column shows the number of residues for which the backbone conformation was analysed, and the total number of residues.

Mol	Chain	Analysed	Favoured	Allowed	Outliers	Percentiles
1	A	1161/1192 (97%)	1108 (95%)	49 (4%)	4 (0%)	37 66
1	C	505/1192 (42%)	450 (89%)	45 (9%)	10 (2%)	6 27
2	B	711/715 (99%)	693 (98%)	16 (2%)	2 (0%)	37 66
All	All	2377/3099 (77%)	2251 (95%)	110 (5%)	16 (1%)	21 49

5 of 16 Ramachandran outliers are listed below:

Mol	Chain	Res	Type
1	A	460	PRO
2	B	407	GLU
1	C	28	PRO
1	C	84	SER
1	C	550	ASP

5.3.2 Protein sidechains [i](#)

In the following table, the Percentiles column shows the percent sidechain outliers of the chain as a percentile score with respect to all PDB entries followed by that with respect to all EM entries.

The Analysed column shows the number of residues for which the sidechain conformation was analysed, and the total number of residues.

Mol	Chain	Analysed	Rotameric	Outliers	Percentiles
1	A	1022/1054 (97%)	991 (97%)	31 (3%)	36 60
1	C	413/1054 (39%)	386 (94%)	27 (6%)	14 39
2	B	642/644 (100%)	630 (98%)	12 (2%)	52 71
All	All	2077/2752 (76%)	2007 (97%)	70 (3%)	34 57

5 of 70 residues with a non-rotameric sidechain are listed below:

Mol	Chain	Res	Type
1	C	367	TYR
1	C	375	VAL
1	C	790	ASP
1	A	953	ASP
1	A	865	MET

Sometimes sidechains can be flipped to improve hydrogen bonding and reduce clashes. 5 of 7 such sidechains are listed below:

Mol	Chain	Res	Type
1	A	1084	HIS
2	B	289	GLN
1	C	374	GLN
1	C	322	ASN
1	A	885	GLN

5.3.3 RNA [i](#)

There are no RNA molecules in this entry.

5.4 Non-standard residues in protein, DNA, RNA chains [i](#)

There are no non-standard protein/DNA/RNA residues in this entry.

5.5 Carbohydrates [i](#)

There are no oligosaccharides in this entry.

5.6 Ligand geometry [i](#)

Of 1 ligands modelled in this entry, 1 is monoatomic - leaving 0 for Mogul analysis.

There are no bond length outliers.

There are no bond angle outliers.

There are no chirality outliers.

There are no torsion outliers.

There are no ring outliers.

No monomer is involved in short contacts.

5.7 Other polymers [i](#)

There are no such residues in this entry.

5.8 Polymer linkage issues [i](#)

There are no chain breaks in this entry.

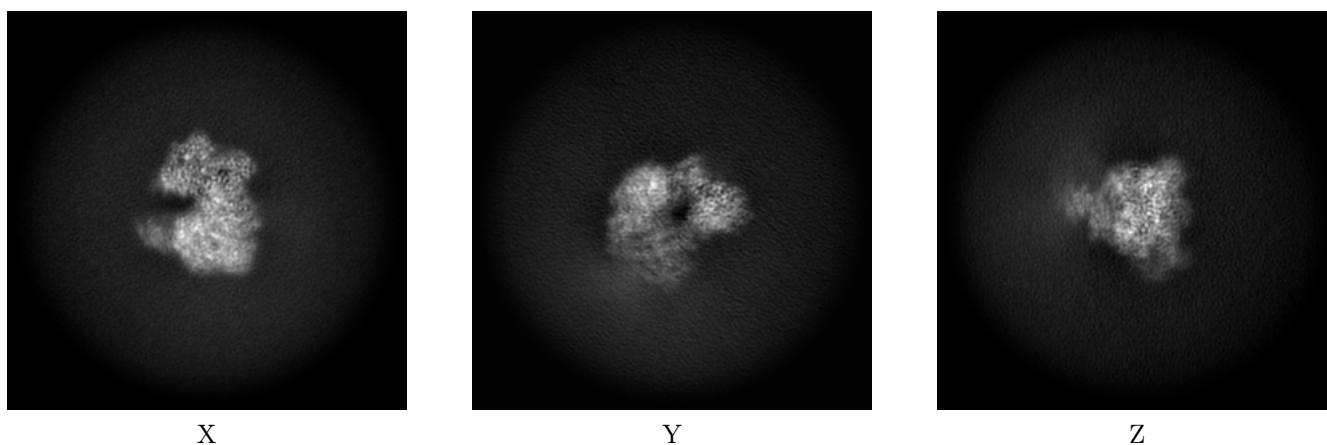
6 Map visualisation [i](#)

This section contains visualisations of the EMDB entry EMD-60973. These allow visual inspection of the internal detail of the map and identification of artifacts.

No raw map or half-maps were deposited for this entry and therefore no images, graphs, etc. pertaining to the raw map can be shown.

6.1 Orthogonal projections [i](#)

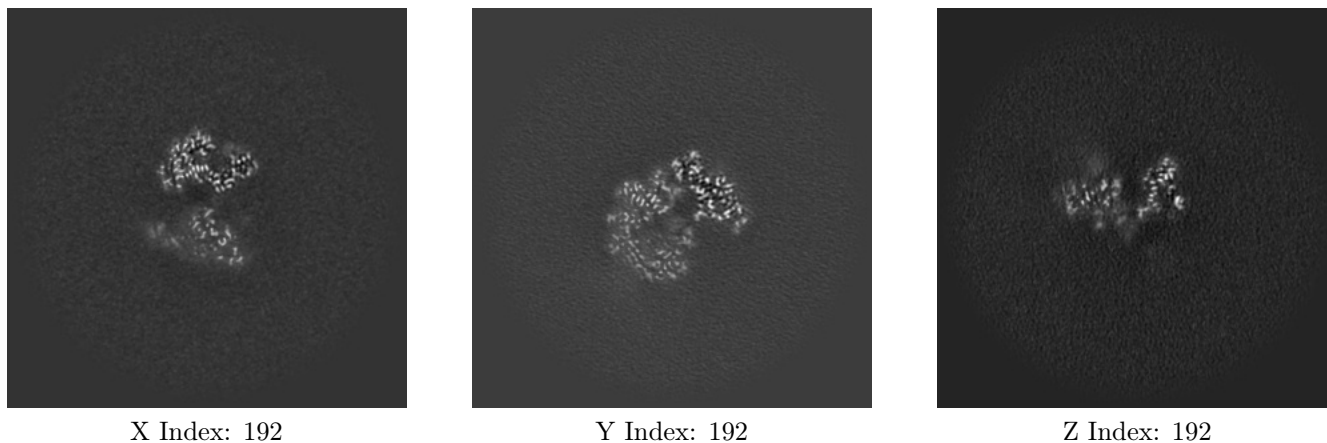
6.1.1 Primary map



The images above show the map projected in three orthogonal directions.

6.2 Central slices [i](#)

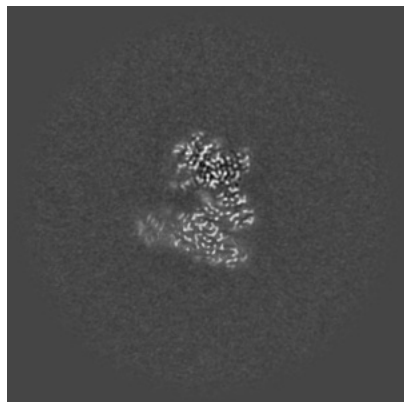
6.2.1 Primary map



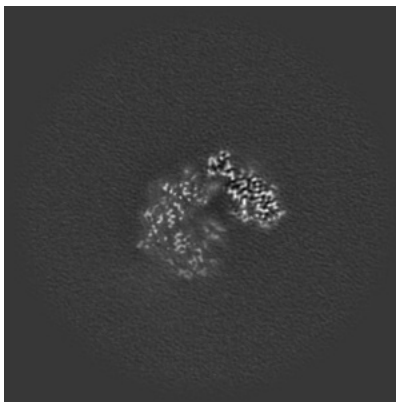
The images above show central slices of the map in three orthogonal directions.

6.3 Largest variance slices [i](#)

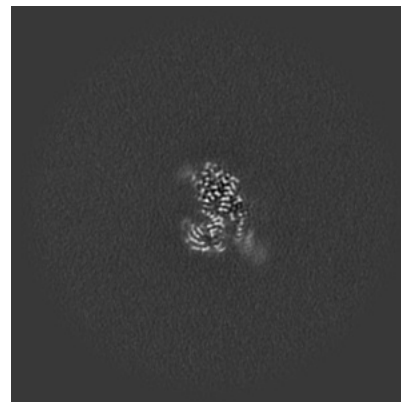
6.3.1 Primary map



X Index: 208



Y Index: 188

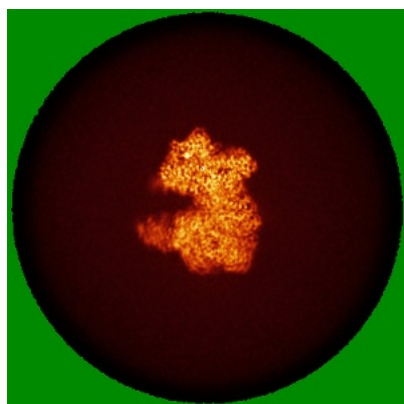


Z Index: 222

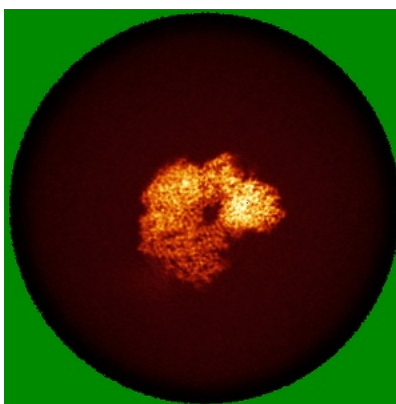
The images above show the largest variance slices of the map in three orthogonal directions.

6.4 Orthogonal standard-deviation projections (False-color) [i](#)

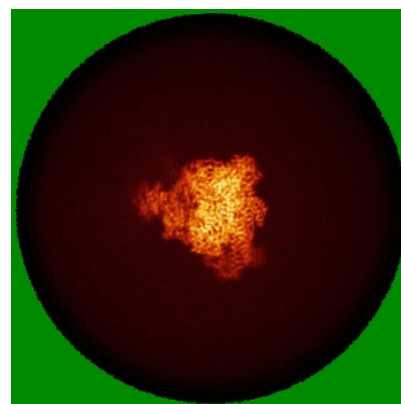
6.4.1 Primary map



X



Y

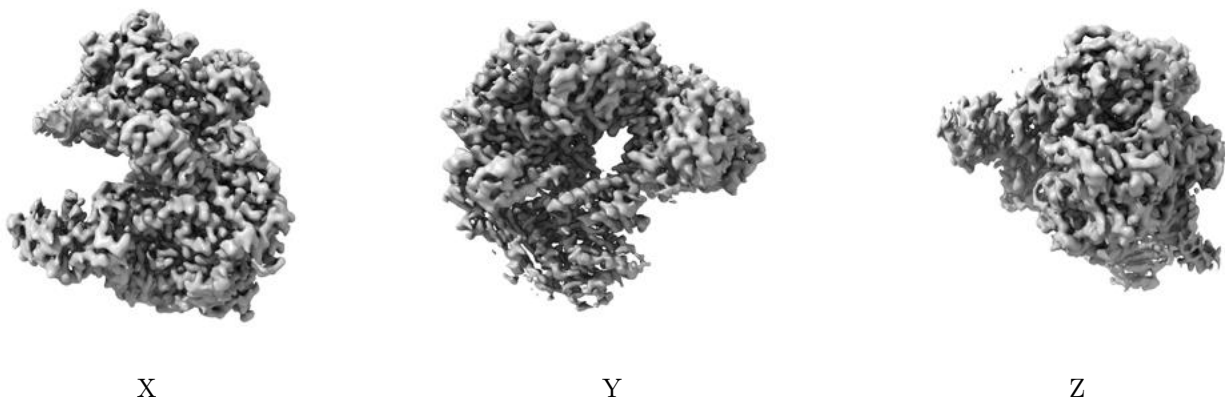


Z

The images above show the map standard deviation projections with false color in three orthogonal directions. Minimum values are shown in green, max in blue, and dark to light orange shades represent small to large values respectively.

6.5 Orthogonal surface views [i](#)

6.5.1 Primary map



The images above show the 3D surface view of the map at the recommended contour level 0.12. These images, in conjunction with the slice images, may facilitate assessment of whether an appropriate contour level has been provided.

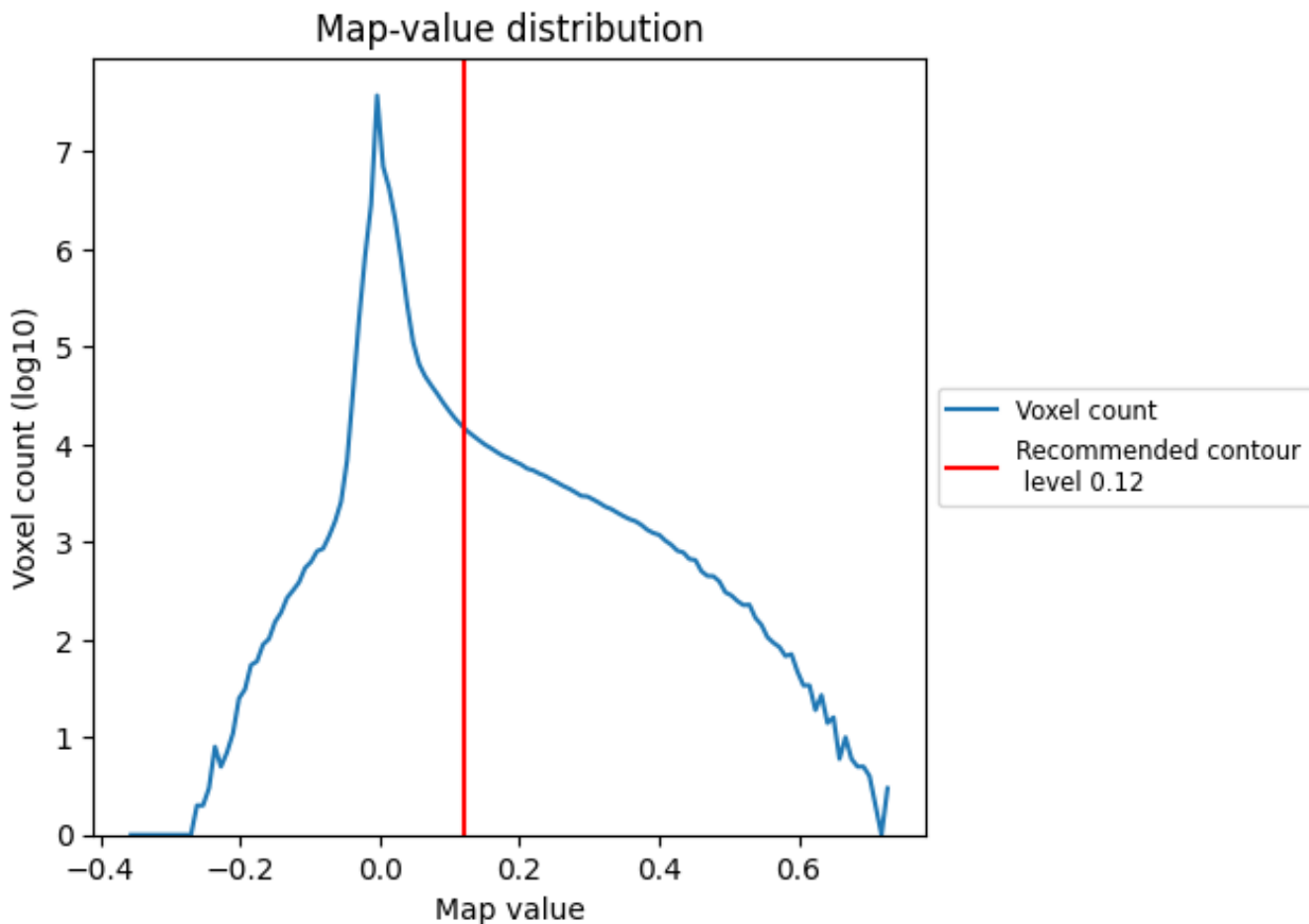
6.6 Mask visualisation [i](#)

This section was not generated. No masks/segmentation were deposited.

7 Map analysis [i](#)

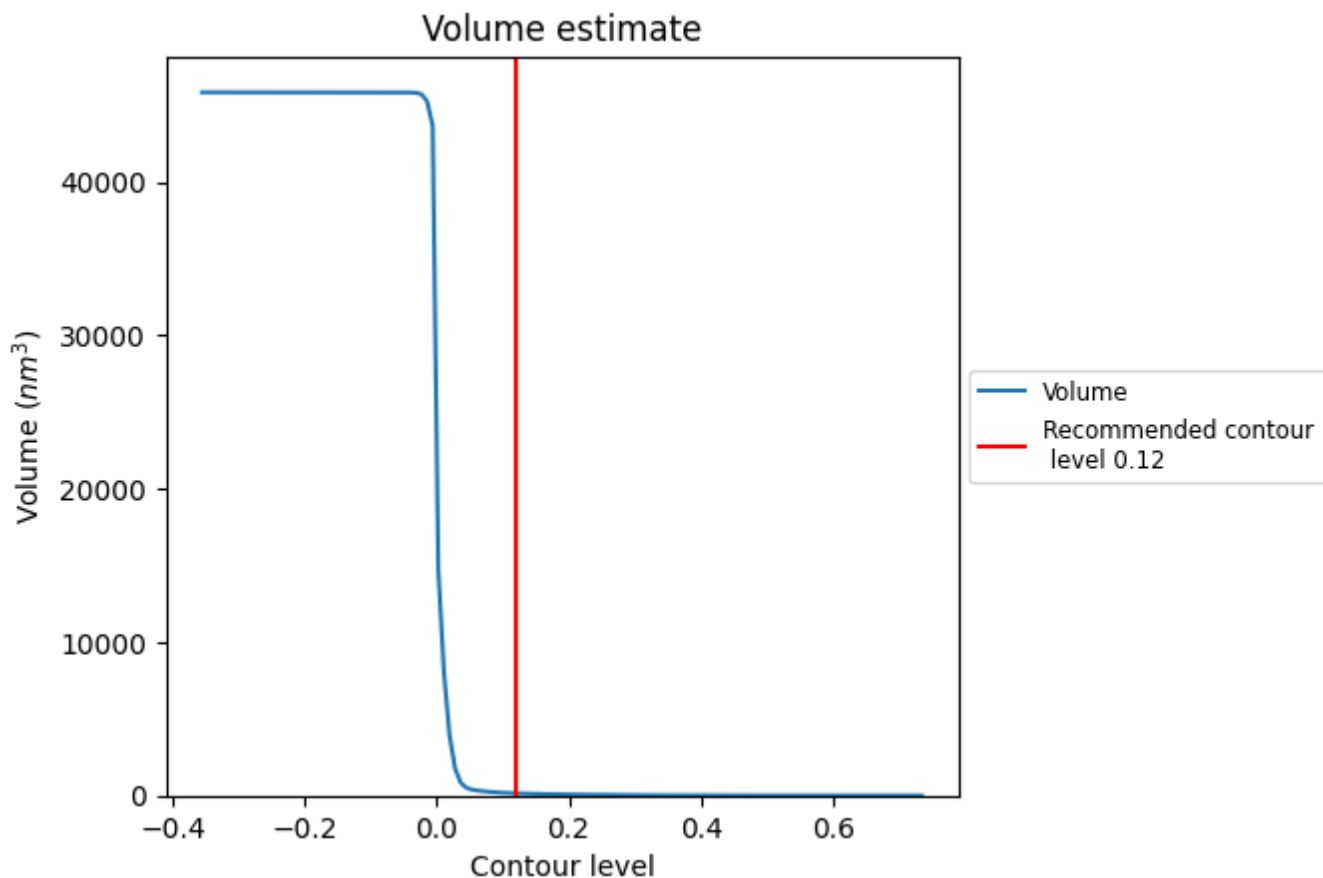
This section contains the results of statistical analysis of the map.

7.1 Map-value distribution [i](#)



The map-value distribution is plotted in 128 intervals along the x-axis. The y-axis is logarithmic. A spike in this graph at zero usually indicates that the volume has been masked.

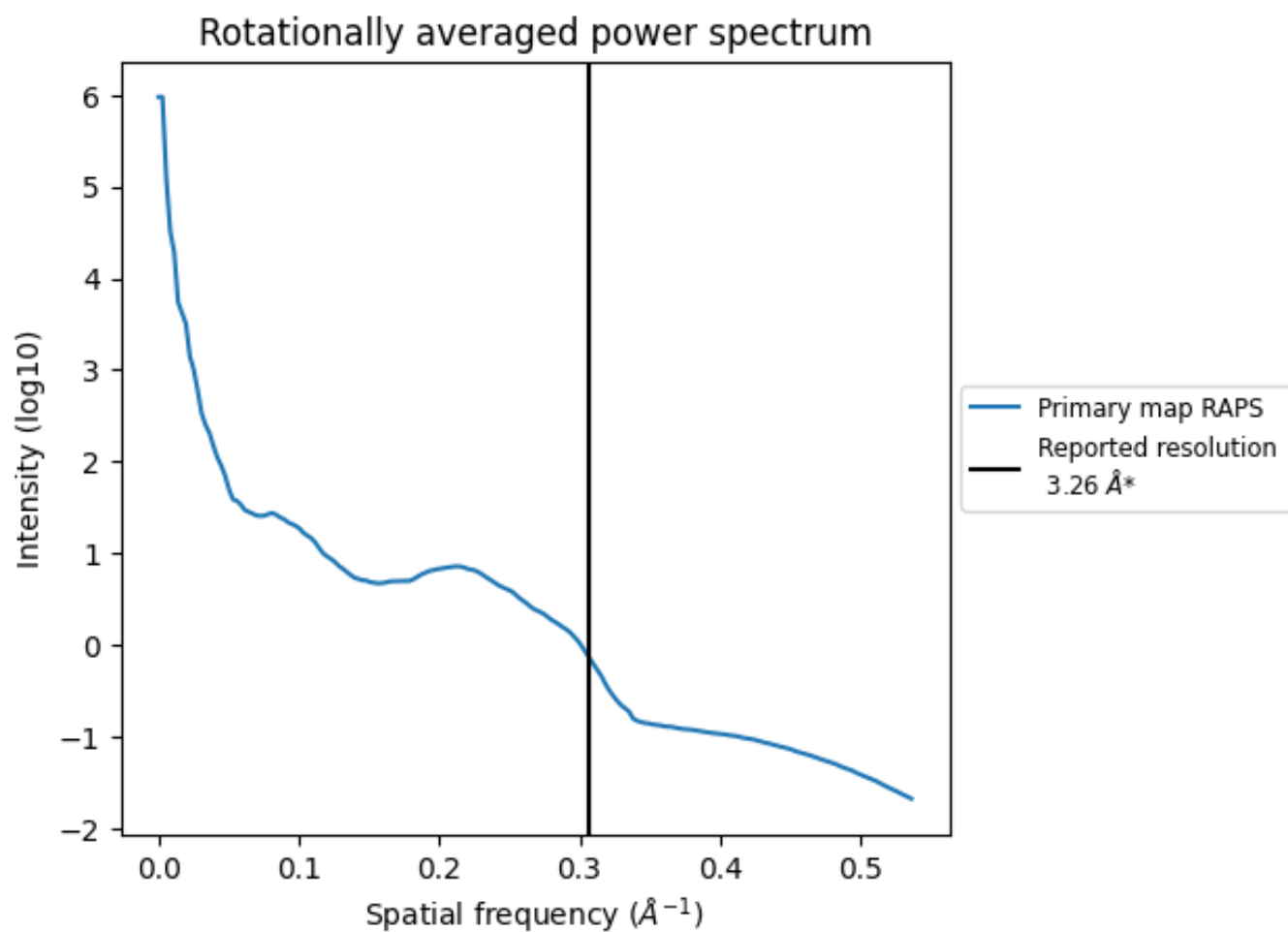
7.2 Volume estimate [i](#)



The volume at the recommended contour level is 145 nm³; this corresponds to an approximate mass of 131 kDa.

The volume estimate graph shows how the enclosed volume varies with the contour level. The recommended contour level is shown as a vertical line and the intersection between the line and the curve gives the volume of the enclosed surface at the given level.

7.3 Rotationally averaged power spectrum [i](#)



*Reported resolution corresponds to spatial frequency of 0.307 Å⁻¹

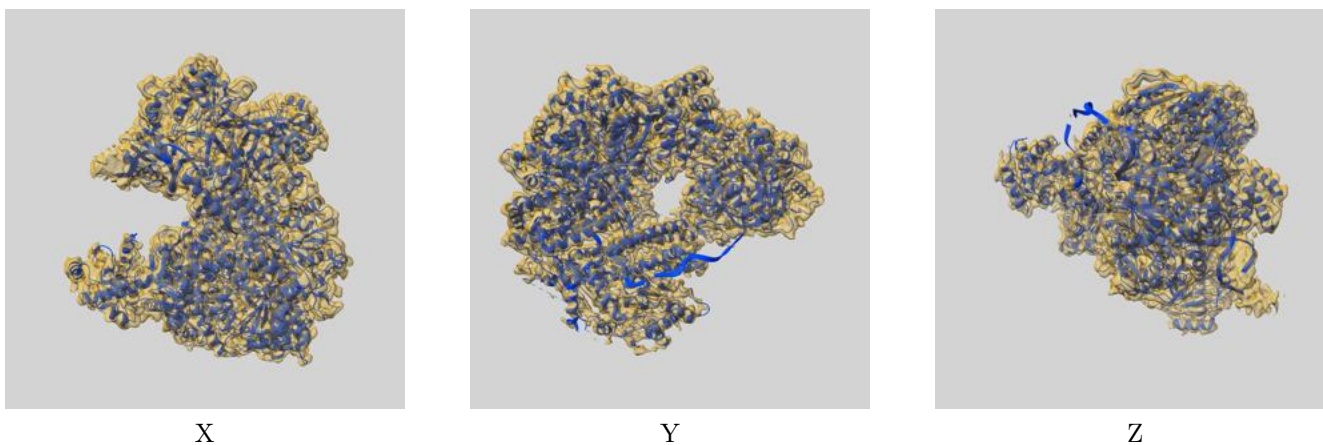
8 Fourier-Shell correlation

This section was not generated. No FSC curve or half-maps provided.

9 Map-model fit [i](#)

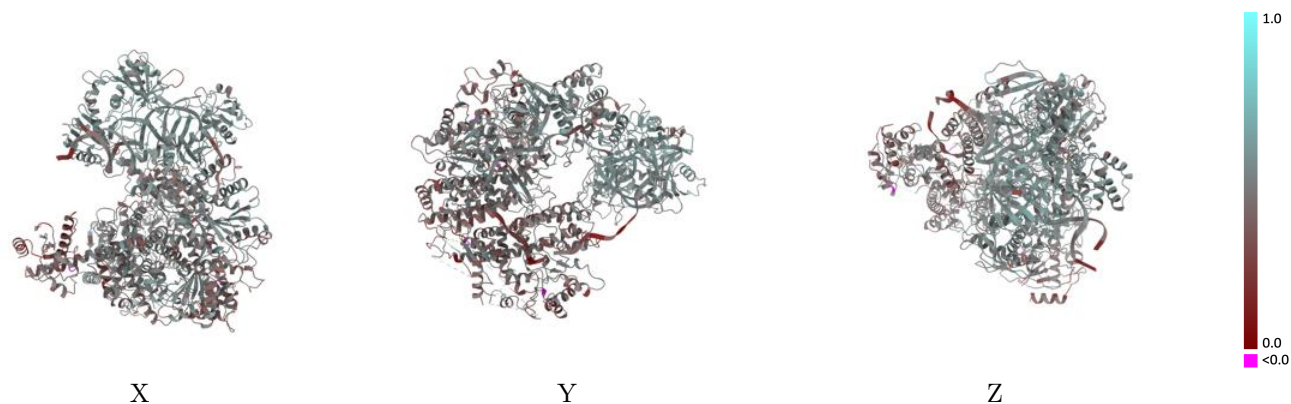
This section contains information regarding the fit between EMDB map EMD-60973 and PDB model 9IXM. Per-residue inclusion information can be found in section 3 on page 6.

9.1 Map-model overlay [i](#)



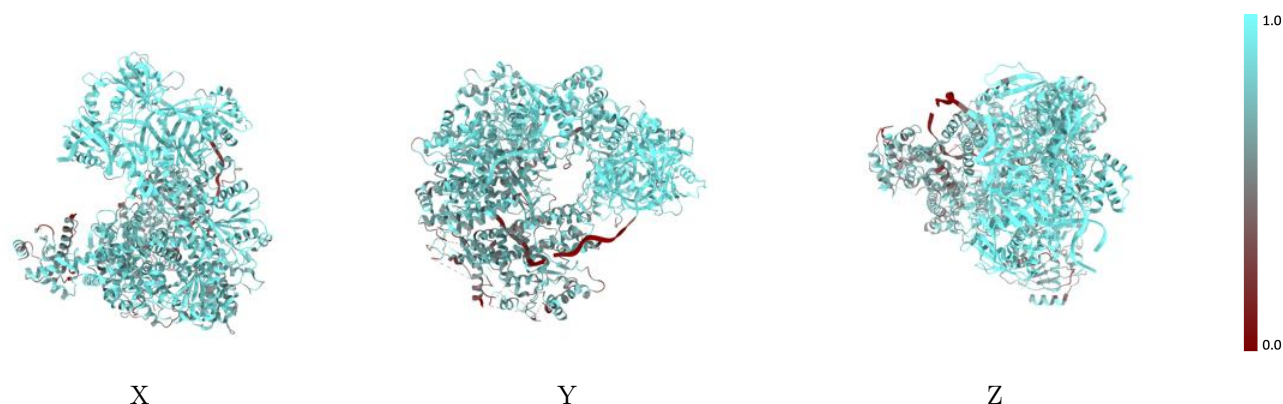
The images above show the 3D surface view of the map at the recommended contour level 0.12 at 50% transparency in yellow overlaid with a ribbon representation of the model coloured in blue. These images allow for the visual assessment of the quality of fit between the atomic model and the map.

9.2 Q-score mapped to coordinate model [i](#)



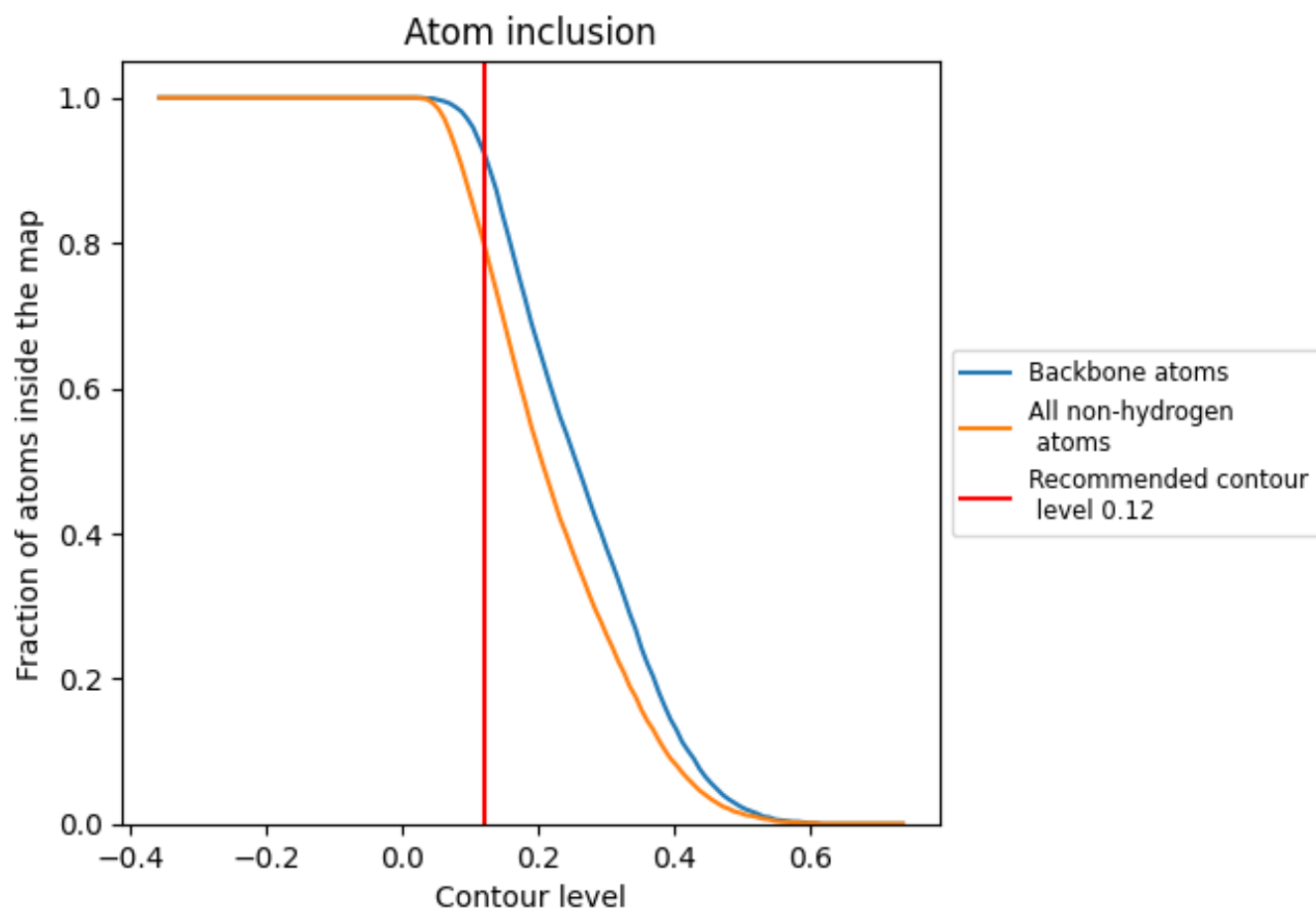
The images above show the model with each residue coloured according to its Q-score. This shows their resolvability in the map with higher Q-score values reflecting better resolvability. Please note: Q-score is calculating the resolvability of atoms, and thus high values are only expected at resolutions at which atoms can be resolved. Low Q-score values may therefore be expected for many entries.

9.3 Atom inclusion mapped to coordinate model [i](#)



The images above show the model with each residue coloured according to its atom inclusion. This shows to what extent they are inside the map at the recommended contour level (0.12).



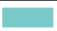
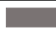










9.4 Atom inclusion [i](#)



At the recommended contour level, 93% of all backbone atoms, 80% of all non-hydrogen atoms, are inside the map.

9.5 Map-model fit summary [i](#)

The table lists the average atom inclusion at the recommended contour level (0.12) and Q-score for the entire model and for each chain.

Chain	Atom inclusion	Q-score
All	 0.8000	 0.4640
A	 0.7920	 0.4510
B	 0.9050	 0.5240
C	 0.6820	 0.4190
D	 0.9870	 0.5540
E	 0.7350	 0.4210
F	 0.7010	 0.3860

