



# wwPDB X-ray Structure Validation Summary Report ⓘ

Nov 15, 2023 – 01:11 AM JST

PDB ID : 6IJA  
Title : Crystal Structure of Arabidopsis thaliana UGT89C1 complexed with UDP-L-rhamnose  
Authors : Zong, G.; Wang, X.  
Deposited on : 2018-10-09  
Resolution : 3.21 Å(reported)

This is a wwPDB X-ray Structure Validation Summary Report for a publicly released PDB entry.

We welcome your comments at [validation@mail.wwpdb.org](mailto:validation@mail.wwpdb.org)

A user guide is available at

<https://www.wwpdb.org/validation/2017/XrayValidationReportHelp>

with specific help available everywhere you see the ⓘ symbol.

The types of validation reports are described at

<http://www.wwpdb.org/validation/2017/FAQs#types>.

---

The following versions of software and data (see [references ⓘ](#)) were used in the production of this report:

MolProbity : 4.02b-467  
Mogul : 1.8.5 (274361), CSD as541be (2020)  
Xtrriage (Phenix) : 1.13  
EDS : 2.36  
buster-report : 1.1.7 (2018)  
Percentile statistics : 20191225.v01 (using entries in the PDB archive December 25th 2019)  
Refmac : 5.8.0158  
CCP4 : 7.0.044 (Gargrove)  
Ideal geometry (proteins) : Engh & Huber (2001)  
Ideal geometry (DNA, RNA) : Parkinson et al. (1996)  
Validation Pipeline (wwPDB-VP) : 2.36

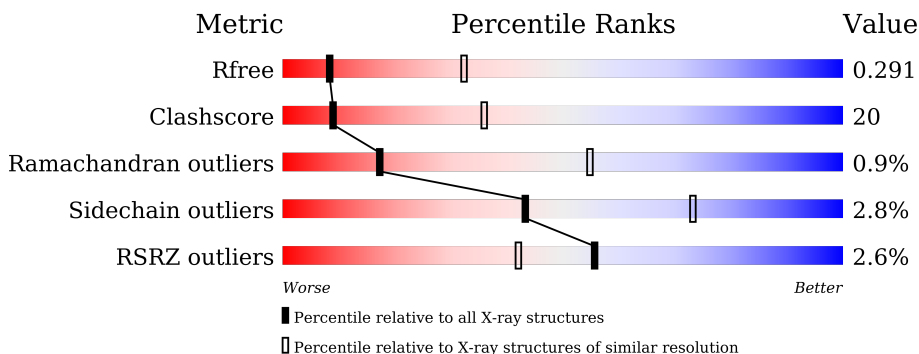
# 1 Overall quality at a glance

The following experimental techniques were used to determine the structure:

*X-RAY DIFFRACTION*

The reported resolution of this entry is 3.21 Å.

Percentile scores (ranging between 0-100) for global validation metrics of the entry are shown in the following graphic. The table shows the number of entries on which the scores are based.



Metric	Whole archive (#Entries)	Similar resolution (#Entries, resolution range(Å))
$R_{free}$	130704	1335 (3.24-3.20)
Clashscore	141614	1460 (3.24-3.20)
Ramachandran outliers	138981	1437 (3.24-3.20)
Sidechain outliers	138945	1436 (3.24-3.20)
RSRZ outliers	127900	1291 (3.24-3.20)

The table below summarises the geometric issues observed across the polymeric chains and their fit to the electron density. The red, orange, yellow and green segments of the lower bar indicate the fraction of residues that contain outliers for  $\geq 3$ , 2, 1 and 0 types of geometric quality criteria respectively. A grey segment represents the fraction of residues that are not modelled. The numeric value for each fraction is indicated below the corresponding segment, with a dot representing fractions  $\leq 5\%$ . The upper red bar (where present) indicates the fraction of residues that have poor fit to the electron density. The numeric value is given above the bar.

Mol	Chain	Length	Quality of chain
1	A	435	
1	B	435	
1	C	435	
1	D	435	

## 2 Entry composition [i](#)

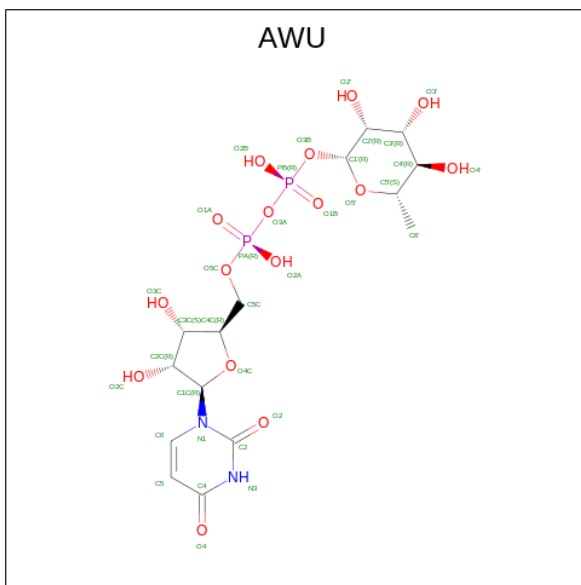
There are 3 unique types of molecules in this entry. The entry contains 12652 atoms, of which 0 are hydrogens and 0 are deuteriums.

In the tables below, the ZeroOcc column contains the number of atoms modelled with zero occupancy, the AltConf column contains the number of residues with at least one atom in alternate conformation and the Trace column contains the number of residues modelled with at most 2 atoms.

- Molecule 1 is a protein called UDP-glycosyltransferase 89C1.

Mol	Chain	Residues	Atoms					ZeroOcc	AltConf	Trace
			Total	C	N	O	S			
1	A	415	Total 3244	C 2081	N 557	O 593	S 13	0	0	0
1	B	413	Total 3232	C 2073	N 554	O 592	S 13	0	0	0
1	C	386	Total 3026	C 1947	N 513	O 553	S 13	0	0	0
1	D	389	Total 3052	C 1967	N 518	O 554	S 13	0	0	0

- Molecule 2 is  $[[[(2 \{R\}, 3 \{S\}, 4 \{R\}, 5 \{R\})-5-[2,4\text{-bis(oxidanylidene)pyrimidin-1-yl]-3,4\text{-bis(oxidanyl)oxolan-2-yl]methoxy-oxidanyl-phosphoryl} [(2 \{R\}, 3 \{R\}, 4 \{R\}, 5 \{R\}, 6 \{S\})-6\text{-methyl-3,4,5-tris(oxidanyl)oxan-2-yl}] \text{ hydrogen phosphate (three-letter code: AWU) (formula: } C_{15}H_{24}N_2O_{16}P_2\text{)}.$



*Continued from previous page...*

Mol	Chain	Residues	Atoms					ZeroOcc	AltConf
			Total	C	N	O	P		
2	B	1	35	15	2	16	2	0	0

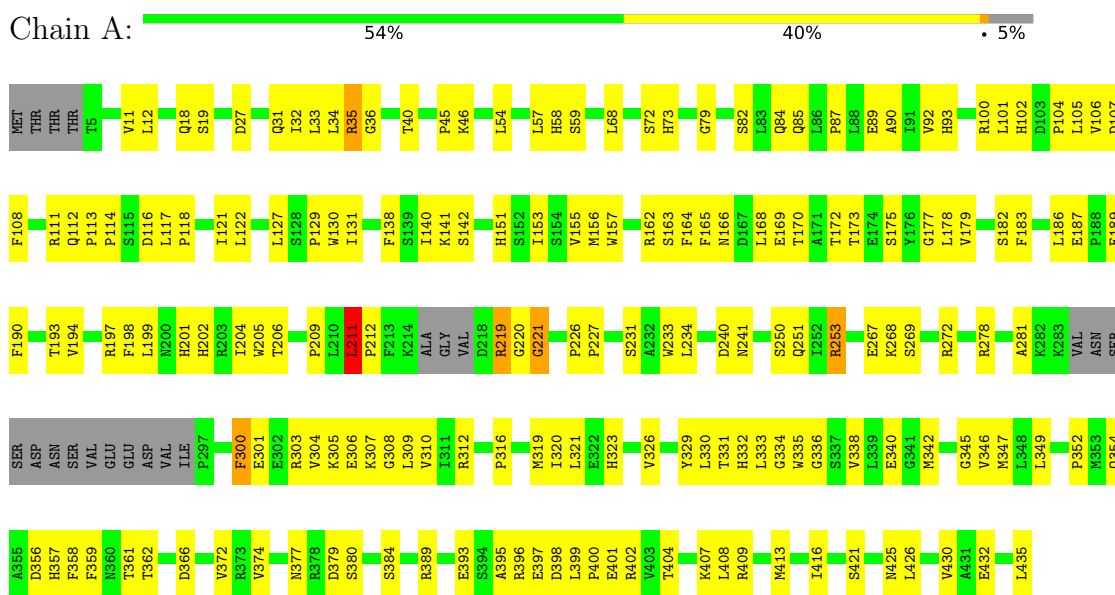
- Molecule 3 is water.

Mol	Chain	Residues	Atoms		ZeroOcc	AltConf
3	A	13	Total 13	O 13	0	0
3	B	9	Total 9	O 9	0	0
3	C	3	Total 3	O 3	0	0
3	D	3	Total 3	O 3	0	0

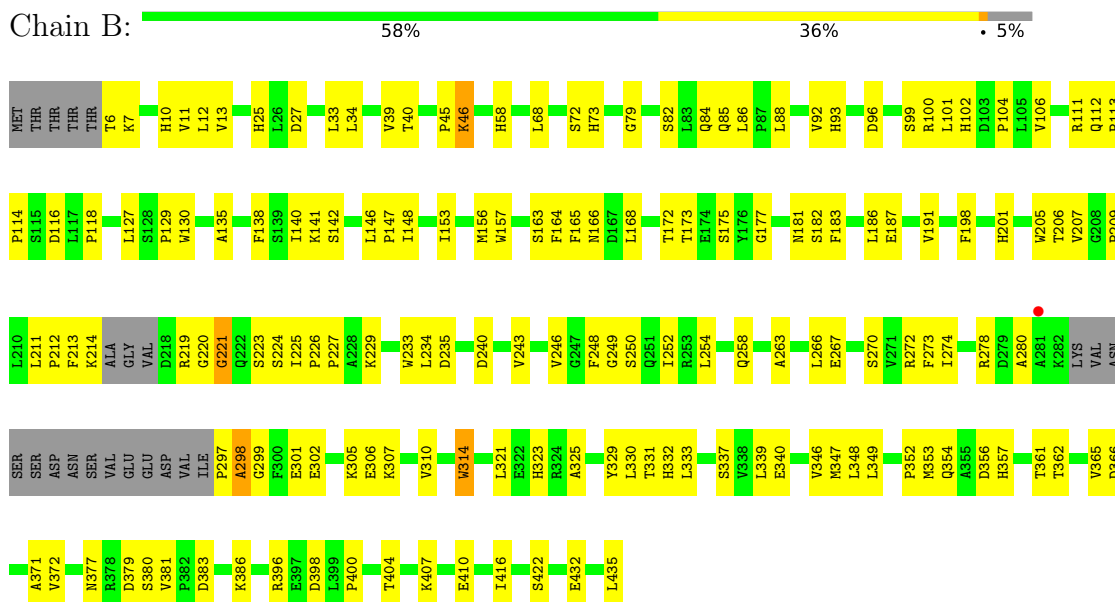
### 3 Residue-property plots

These plots are drawn for all protein, RNA, DNA and oligosaccharide chains in the entry. The first graphic for a chain summarises the proportions of the various outlier classes displayed in the second graphic. The second graphic shows the sequence view annotated by issues in geometry and electron density. Residues are color-coded according to the number of geometric quality criteria for which they contain at least one outlier: green = 0, yellow = 1, orange = 2 and red = 3 or more. A red dot above a residue indicates a poor fit to the electron density ( $RSRZ > 2$ ). Stretches of 2 or more consecutive residues without any outlier are shown as a green connector. Residues present in the sample, but not in the model, are shown in grey.

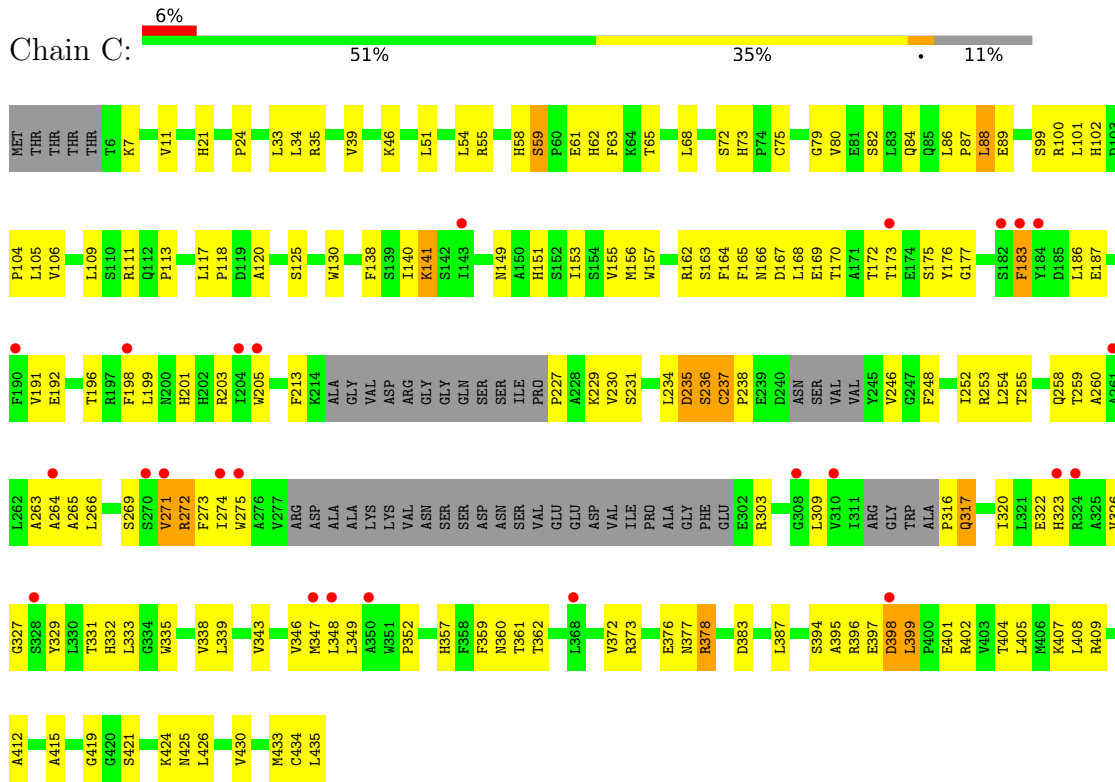
#### • Molecule 1: UDP-glycosyltransferase 89C1



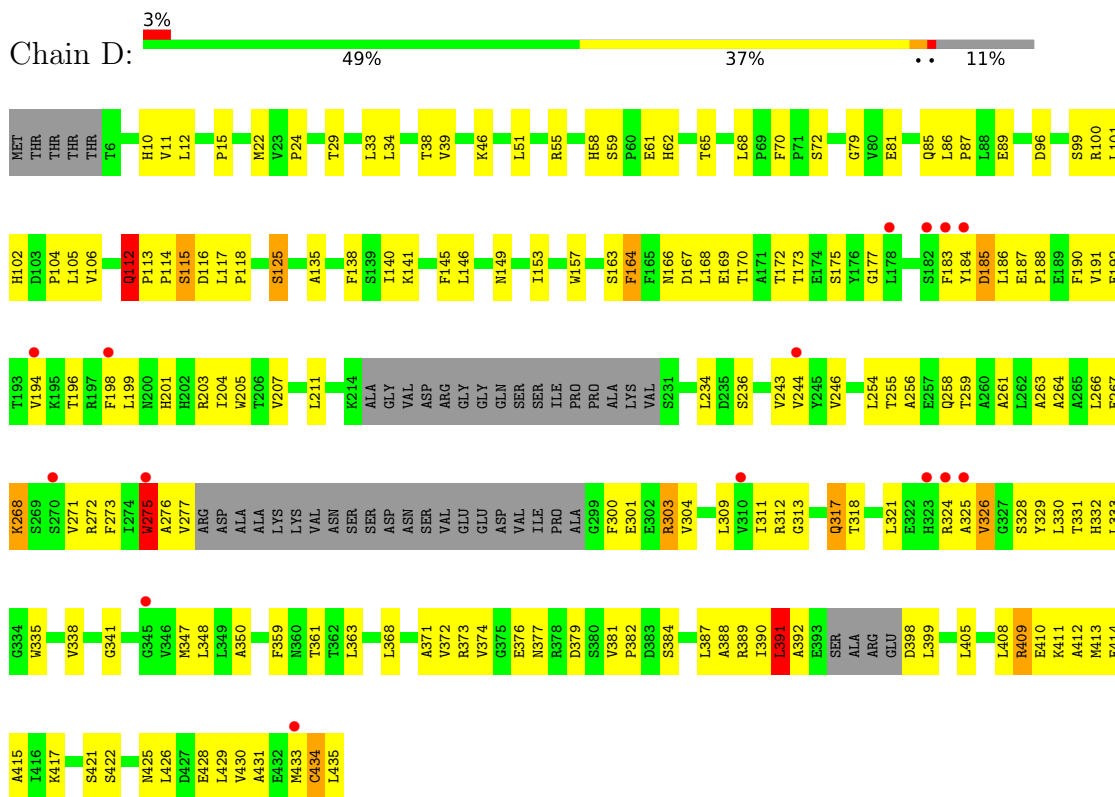
#### • Molecule 1: UDP-glycosyltransferase 89C1



• Molecule 1: UDP-glycosyltransferase 89C1



• Molecule 1: UDP-glycosyltransferase 89C1



## 4 Data and refinement statistics i

Property	Value	Source
Space group	P 1 21 1	Depositor
Cell constants a, b, c, $\alpha$ , $\beta$ , $\gamma$	90.67Å 84.98Å 125.47Å 90.00° 89.92° 90.00°	Depositor
Resolution (Å)	45.34 – 3.21 45.34 – 3.21	Depositor EDS
% Data completeness (in resolution range)	96.6 (45.34-3.21) 96.5 (45.34-3.21)	Depositor EDS
$R_{merge}$	0.09	Depositor
$R_{sym}$	(Not available)	Depositor
$\langle I/\sigma(I) \rangle$ <sup>1</sup>	2.19 (at 3.19Å)	Xtrriage
Refinement program	PHENIX 1.11.1_2575	Depositor
R, $R_{free}$	0.216 , 0.291 0.217 , 0.291	Depositor DCC
$R_{free}$ test set	1513 reflections (4.99%)	wwPDB-VP
Wilson B-factor (Å <sup>2</sup> )	56.3	Xtrriage
Anisotropy	0.053	Xtrriage
Bulk solvent $k_{sol}$ (e/Å <sup>3</sup> ), $B_{sol}$ (Å <sup>2</sup> )	0.34 , 28.3	EDS
L-test for twinning <sup>2</sup>	$\langle  L  \rangle = 0.46$ , $\langle L^2 \rangle = 0.29$	Xtrriage
Estimated twinning fraction	0.439 for h,-k,-l	Xtrriage
$F_o, F_c$ correlation	0.90	EDS
Total number of atoms	12652	wwPDB-VP
Average B, all atoms (Å <sup>2</sup> )	56.0	wwPDB-VP

Xtrriage's analysis on translational NCS is as follows: *The largest off-origin peak in the Patterson function is 5.06% of the height of the origin peak. No significant pseudotranslation is detected.*

<sup>1</sup>Intensities estimated from amplitudes.

<sup>2</sup>Theoretical values of  $\langle |L| \rangle$ ,  $\langle L^2 \rangle$  for acentric reflections are 0.5, 0.333 respectively for untwinned datasets, and 0.375, 0.2 for perfectly twinned datasets.

## 5 Model quality [i](#)

### 5.1 Standard geometry [i](#)

Bond lengths and bond angles in the following residue types are not validated in this section: AWU

The Z score for a bond length (or angle) is the number of standard deviations the observed value is removed from the expected value. A bond length (or angle) with  $|Z| > 5$  is considered an outlier worth inspection. RMSZ is the root-mean-square of all Z scores of the bond lengths (or angles).

Mol	Chain	Bond lengths		Bond angles	
		RMSZ	# Z  >5	RMSZ	# Z  >5
1	A	0.55	0/3325	0.76	2/4520 (0.0%)
1	B	0.60	0/3313	0.74	1/4504 (0.0%)
1	C	0.52	1/3100 (0.0%)	0.70	1/4212 (0.0%)
1	D	0.53	1/3129 (0.0%)	0.71	3/4256 (0.1%)
All	All	0.55	2/12867 (0.0%)	0.73	7/17492 (0.0%)

Chiral center outliers are detected by calculating the chiral volume of a chiral center and verifying if the center is modelled as a planar moiety or with the opposite hand. A planarity outlier is detected by checking planarity of atoms in a peptide group, atoms in a mainchain group or atoms of a sidechain that are expected to be planar.

Mol	Chain	#Chirality outliers	#Planarity outliers
1	A	0	2
1	B	0	2
1	C	0	1
1	D	0	2
All	All	0	7

All (2) bond length outliers are listed below:

Mol	Chain	Res	Type	Atoms	Z	Observed(Å)	Ideal(Å)
1	C	398	ASP	C-N	7.74	1.51	1.34
1	D	434	CYS	CB-SG	-5.21	1.73	1.81

The worst 5 of 7 bond angle outliers are listed below:

Mol	Chain	Res	Type	Atoms	Z	Observed(°)	Ideal(°)
1	D	398	ASP	C-N-CA	10.18	147.16	121.70
1	C	398	ASP	C-N-CA	9.22	144.75	121.70
1	A	211	LEU	CB-CG-CD2	-8.52	96.51	111.00

*Continued on next page...*



Continued from previous page...

Mol	Chain	Res	Type	Atoms	Z	Observed( $^{\circ}$ )	Ideal( $^{\circ}$ )
1	D	391	LEU	CA-CB-CG	6.41	130.04	115.30
1	B	211	LEU	CA-CB-CG	6.24	129.64	115.30

There are no chirality outliers.

5 of 7 planarity outliers are listed below:

Mol	Chain	Res	Type	Group
1	A	162	ARG	Peptide
1	A	219	ARG	Peptide
1	B	298	ALA	Peptide
1	B	299	GLY	Peptide
1	C	399	LEU	Peptide

## 5.2 Too-close contacts [i](#)

In the following table, the Non-H and H(model) columns list the number of non-hydrogen atoms and hydrogen atoms in the chain respectively. The H(added) column lists the number of hydrogen atoms added and optimized by MolProbity. The Clashes column lists the number of clashes within the asymmetric unit, whereas Symm-Clashes lists symmetry-related clashes.

Mol	Chain	Non-H	H(model)	H(added)	Clashes	Symm-Clashes
1	A	3244	0	3257	121	0
1	B	3232	0	3242	120	0
1	C	3026	0	3037	132	0
1	D	3052	0	3057	141	0
2	A	35	0	0	3	0
2	B	35	0	0	6	0
3	A	13	0	0	0	0
3	B	9	0	0	1	0
3	C	3	0	0	1	0
3	D	3	0	0	1	0
All	All	12652	0	12593	508	0

The all-atom clashscore is defined as the number of clashes found per 1000 atoms (including hydrogen atoms). The all-atom clashscore for this structure is 20.

The worst 5 of 508 close contacts within the same asymmetric unit are listed below, sorted by their clash magnitude.

Atom-1	Atom-2	Interatomic distance ( $\text{\AA}$ )	Clash overlap ( $\text{\AA}$ )
1:C:246:VAL:HG13	1:C:275:TRP:HB3	1.25	1.15

Continued on next page...

Continued from previous page...

Atom-1	Atom-2	Interatomic distance (Å)	Clash overlap (Å)
1:B:148:ILE:CG2	2:B:900:AWU:O4'	1.95	1.13
1:B:148:ILE:HG23	2:B:900:AWU:O4'	1.64	0.96
1:D:11:VAL:HG23	1:D:39:VAL:HG23	1.49	0.94
1:B:148:ILE:HG22	2:B:900:AWU:O4'	1.68	0.92

There are no symmetry-related clashes.

## 5.3 Torsion angles [i](#)

### 5.3.1 Protein backbone [i](#)

In the following table, the Percentiles column shows the percent Ramachandran outliers of the chain as a percentile score with respect to all X-ray entries followed by that with respect to entries of similar resolution.

The Analysed column shows the number of residues for which the backbone conformation was analysed, and the total number of residues.

Mol	Chain	Analysed	Favoured	Allowed	Outliers	Percentiles	
1	A	409/435 (94%)	380 (93%)	26 (6%)	3 (1%)	22	60
1	B	407/435 (94%)	380 (93%)	24 (6%)	3 (1%)	22	60
1	C	376/435 (86%)	348 (93%)	23 (6%)	5 (1%)	12	46
1	D	381/435 (88%)	352 (92%)	26 (7%)	3 (1%)	19	57
All	All	1573/1740 (90%)	1460 (93%)	99 (6%)	14 (1%)	17	55

5 of 14 Ramachandran outliers are listed below:

Mol	Chain	Res	Type
1	A	240	ASP
1	C	271	VAL
1	A	300	PHE
1	C	235	ASP
1	C	397	GLU

### 5.3.2 Protein sidechains [i](#)

In the following table, the Percentiles column shows the percent sidechain outliers of the chain as a percentile score with respect to all X-ray entries followed by that with respect to entries of similar resolution.

The Analysed column shows the number of residues for which the sidechain conformation was analysed, and the total number of residues.

Mol	Chain	Analysed	Rotameric	Outliers	Percentiles	
1	A	358/377 (95%)	347 (97%)	11 (3%)	40	71
1	B	357/377 (95%)	352 (99%)	5 (1%)	67	85
1	C	336/377 (89%)	326 (97%)	10 (3%)	41	72
1	D	338/377 (90%)	325 (96%)	13 (4%)	33	66
All	All	1389/1508 (92%)	1350 (97%)	39 (3%)	43	73

5 of 39 residues with a non-rotameric sidechain are listed below:

Mol	Chain	Res	Type
1	D	185	ASP
1	D	317	GLN
1	D	201	HIS
1	D	275	TRP
1	D	409	ARG

Sometimes sidechains can be flipped to improve hydrogen bonding and reduce clashes. 5 of 7 such sidechains are listed below:

Mol	Chain	Res	Type
1	B	332	HIS
1	C	30	HIS
1	D	58	HIS
1	D	30	HIS
1	B	323	HIS

### 5.3.3 RNA [i](#)

There are no RNA molecules in this entry.

## 5.4 Non-standard residues in protein, DNA, RNA chains [i](#)

There are no non-standard protein/DNA/RNA residues in this entry.

## 5.5 Carbohydrates [i](#)

There are no monosaccharides in this entry.

## 5.6 Ligand geometry

2 ligands are modelled in this entry.

In the following table, the Counts columns list the number of bonds (or angles) for which Mogul statistics could be retrieved, the number of bonds (or angles) that are observed in the model and the number of bonds (or angles) that are defined in the Chemical Component Dictionary. The Link column lists molecule types, if any, to which the group is linked. The Z score for a bond length (or angle) is the number of standard deviations the observed value is removed from the expected value. A bond length (or angle) with  $|Z| > 2$  is considered an outlier worth inspection. RMSZ is the root-mean-square of all Z scores of the bond lengths (or angles).

Mol	Type	Chain	Res	Link	Bond lengths			Bond angles		
					Counts	RMSZ	# Z  > 2	Counts	RMSZ	# Z  > 2
2	AWU	B	900	-	34,37,37	2.98	13 (38%)	52,57,57	2.48	15 (28%)
2	AWU	A	900	-	34,37,37	3.42	12 (35%)	52,57,57	2.80	10 (19%)

In the following table, the Chirals column lists the number of chiral outliers, the number of chiral centers analysed, the number of these observed in the model and the number defined in the Chemical Component Dictionary. Similar counts are reported in the Torsion and Rings columns. '-' means no outliers of that kind were identified.

Mol	Type	Chain	Res	Link	Chirals	Torsions	Rings
2	AWU	B	900	-	-	8/21/57/57	0/3/3/3
2	AWU	A	900	-	-	5/21/57/57	0/3/3/3

The worst 5 of 25 bond length outliers are listed below:

Mol	Chain	Res	Type	Atoms	Z	Observed(Å)	Ideal(Å)
2	A	900	AWU	C3C-C4C	-11.38	1.23	1.53
2	A	900	AWU	O4-C4	8.11	1.40	1.24
2	B	900	AWU	O4-C4	7.80	1.39	1.24
2	A	900	AWU	O4C-C4C	7.41	1.61	1.45
2	B	900	AWU	O4C-C4C	6.79	1.60	1.45

The worst 5 of 25 bond angle outliers are listed below:

Mol	Chain	Res	Type	Atoms	Z	Observed(°)	Ideal(°)
2	A	900	AWU	C2C-C3C-C4C	11.33	124.67	102.64
2	A	900	AWU	O3C-C3C-C4C	-9.34	84.03	111.05
2	B	900	AWU	O3C-C3C-C4C	-7.57	89.15	111.05
2	B	900	AWU	C2C-C3C-C4C	7.40	117.02	102.64
2	A	900	AWU	O5'-C1'-O3B	6.61	120.01	111.36

There are no chirality outliers.

5 of 13 torsion outliers are listed below:

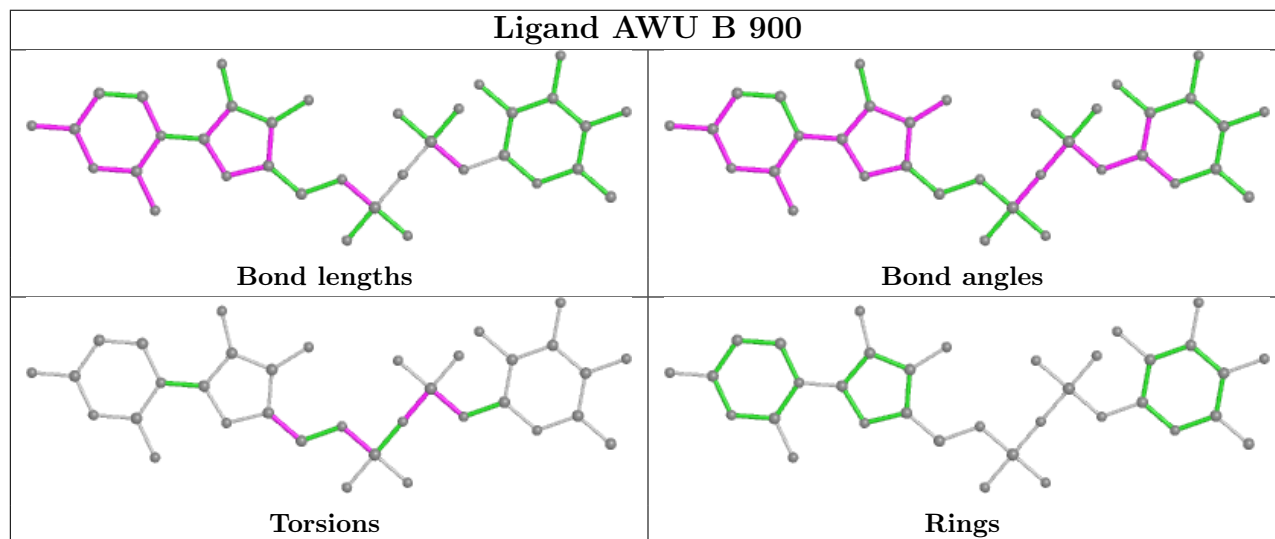
Mol	Chain	Res	Type	Atoms
2	A	900	AWU	C1'-O3B-PB-O3A
2	B	900	AWU	C5C-O5C-PA-O1A
2	B	900	AWU	C5C-O5C-PA-O2A
2	B	900	AWU	C5C-O5C-PA-O3A
2	B	900	AWU	O4C-C4C-C5C-O5C

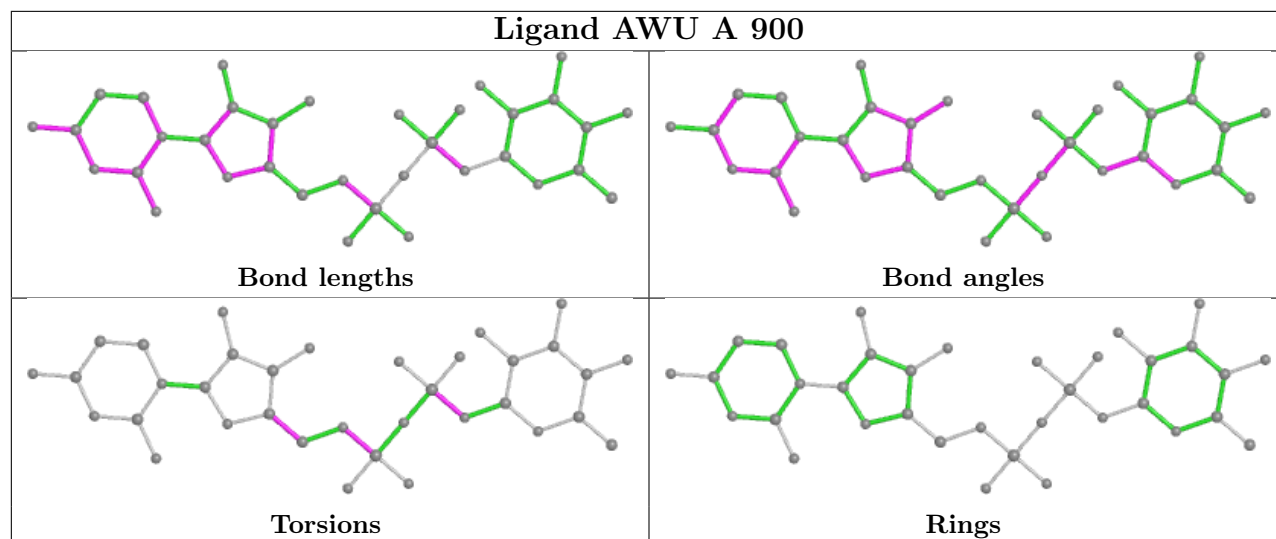
There are no ring outliers.

2 monomers are involved in 9 short contacts:

Mol	Chain	Res	Type	Clashes	Symm-Clashes
2	B	900	AWU	6	0
2	A	900	AWU	3	0

The following is a two-dimensional graphical depiction of Mogul quality analysis of bond lengths, bond angles, torsion angles, and ring geometry for all instances of the Ligand of Interest. In addition, ligands with molecular weight > 250 and outliers as shown on the validation Tables will also be included. For torsion angles, if less than 5% of the Mogul distribution of torsion angles is within 10 degrees of the torsion angle in question, then that torsion angle is considered an outlier. Any bond that is central to one or more torsion angles identified as an outlier by Mogul will be highlighted in the graph. For rings, the root-mean-square deviation (RMSD) between the ring in question and similar rings identified by Mogul is calculated over all ring torsion angles. If the average RMSD is greater than 60 degrees and the minimal RMSD between the ring in question and any Mogul-identified rings is also greater than 60 degrees, then that ring is considered an outlier. The outliers are highlighted in purple. The color gray indicates Mogul did not find sufficient equivalents in the CSD to analyse the geometry.





## 5.7 Other polymers [\(i\)](#)

There are no such residues in this entry.

## 5.8 Polymer linkage issues [\(i\)](#)

There are no chain breaks in this entry.

## 6 Fit of model and data [i](#)

### 6.1 Protein, DNA and RNA chains [i](#)

In the following table, the column labelled ‘#RSRZ > 2’ contains the number (and percentage) of RSRZ outliers, followed by percent RSRZ outliers for the chain as percentile scores relative to all X-ray entries and entries of similar resolution. The OWAB column contains the minimum, median, 95<sup>th</sup> percentile and maximum values of the occupancy-weighted average B-factor per residue. The column labelled ‘Q < 0.9’ lists the number of (and percentage) of residues with an average occupancy less than 0.9.

Mol	Chain	Analysed	<RSRZ>	#RSRZ>2	OWAB(Å <sup>2</sup> )	Q<0.9
1	A	415/435 (95%)	-0.19	0 <span style="border: 1px solid blue; padding: 2px;">100</span> <span style="border: 1px solid blue; padding: 2px;">100</span>	20, 41, 67, 96	0
1	B	413/435 (94%)	-0.21	1 (0%) <span style="border: 1px solid blue; padding: 2px;">95</span> <span style="border: 1px solid blue; padding: 2px;">94</span>	20, 41, 68, 79	0
1	C	386/435 (88%)	0.29	25 (6%) <span style="border: 1px solid red; padding: 2px;">18</span> <span style="border: 1px solid red; padding: 2px;">11</span>	25, 71, 113, 129	0
1	D	389/435 (89%)	0.31	15 (3%) <span style="border: 1px solid red; padding: 2px;">39</span> <span style="border: 1px solid red; padding: 2px;">27</span>	25, 71, 109, 122	0
All	All	1603/1740 (92%)	0.04	41 (2%) <span style="border: 1px solid gray; padding: 2px;">56</span> <span style="border: 1px solid gray; padding: 2px;">42</span>	20, 51, 103, 129	0

The worst 5 of 41 RSRZ outliers are listed below:

Mol	Chain	Res	Type	RSRZ
1	C	264	ALA	4.5
1	C	204	ILE	4.4
1	D	270	SER	4.4
1	C	324	ARG	3.5
1	C	183	PHE	3.5

### 6.2 Non-standard residues in protein, DNA, RNA chains [i](#)

There are no non-standard protein/DNA/RNA residues in this entry.

### 6.3 Carbohydrates [i](#)

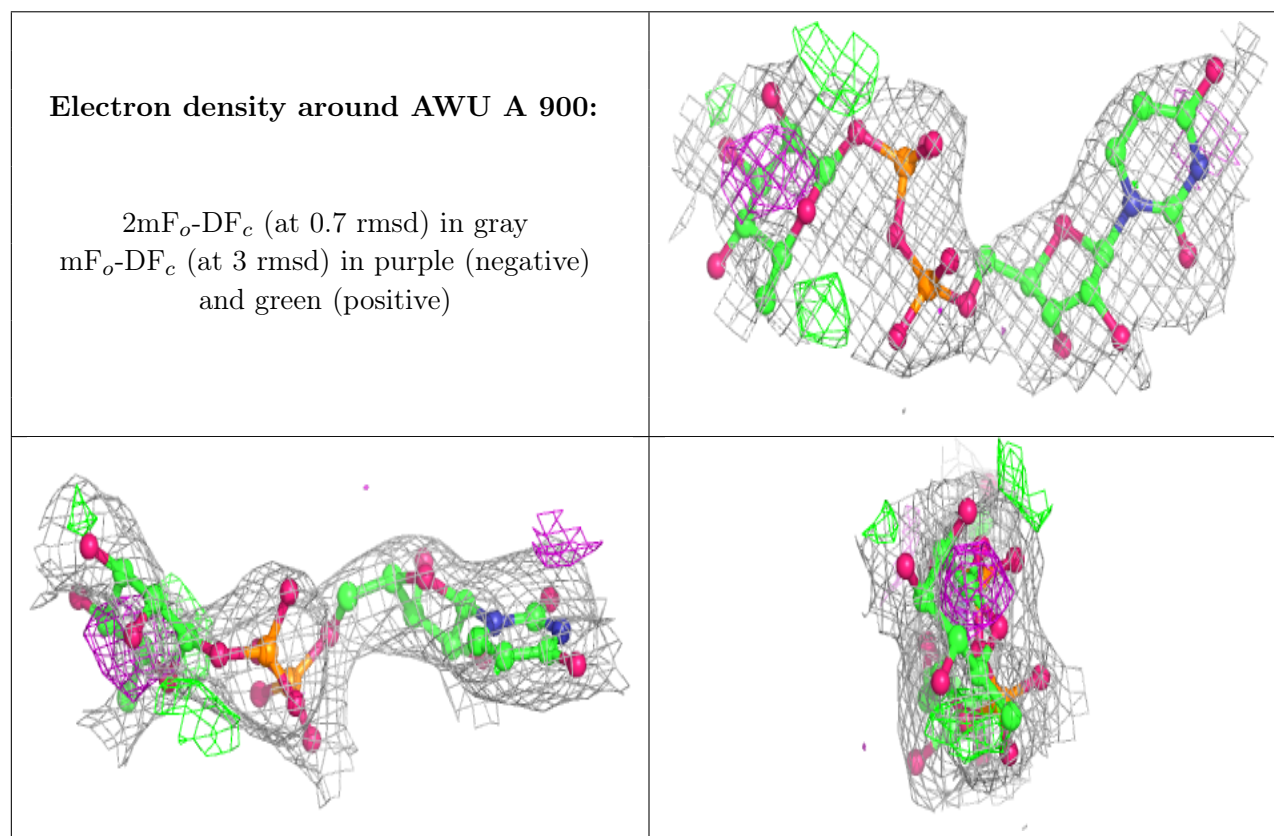
There are no monosaccharides in this entry.

### 6.4 Ligands [i](#)

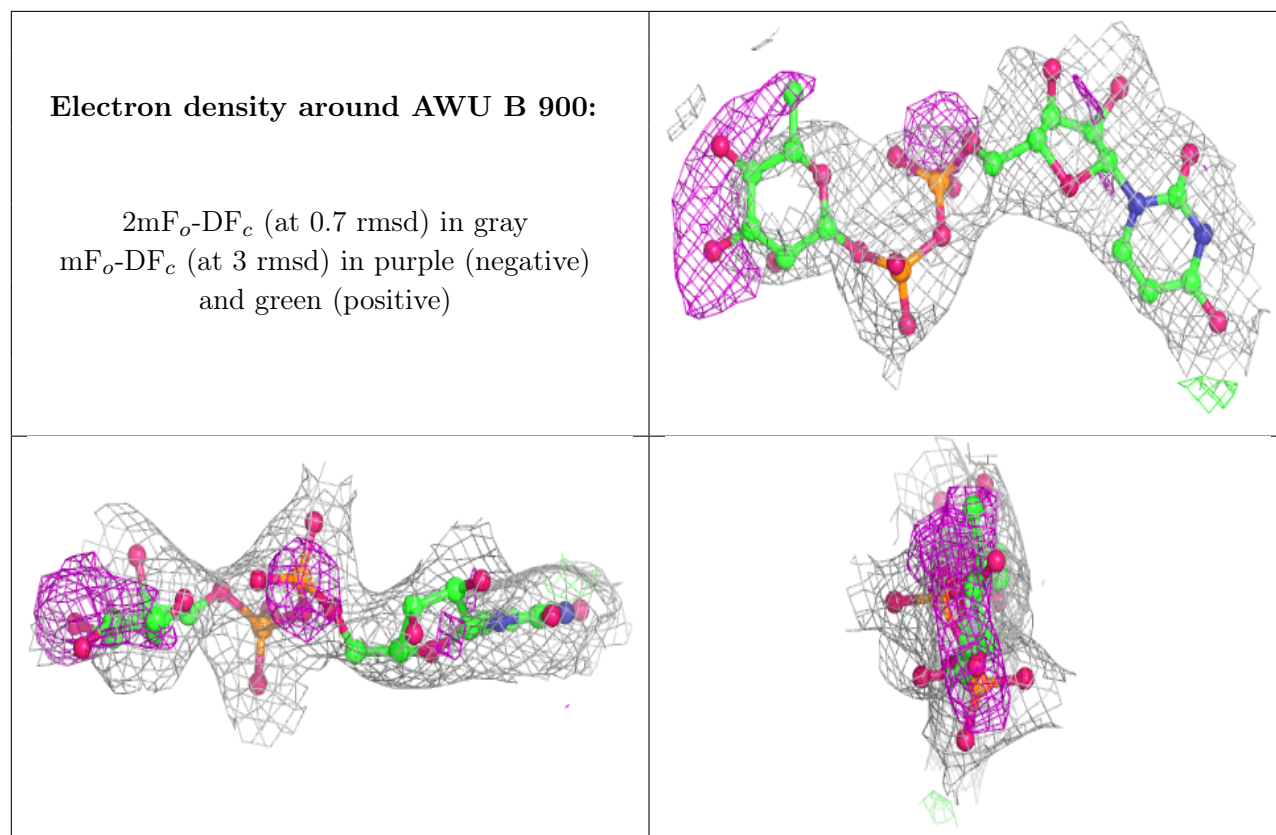
In the following table, the Atoms column lists the number of modelled atoms in the group and the number defined in the chemical component dictionary. The B-factors column lists the minimum, median, 95<sup>th</sup> percentile and maximum values of B factors of atoms in the group. The column labelled ‘Q < 0.9’ lists the number of atoms with occupancy less than 0.9.

Mol	Type	Chain	Res	Atoms	RSCC	RSR	B-factors( $\text{\AA}^2$ )	Q<0.9
2	AWU	A	900	35/35	0.89	0.30	27,39,78,80	0
2	AWU	B	900	35/35	0.89	0.32	28,39,78,80	0

The following is a graphical depiction of the model fit to experimental electron density of all instances of the Ligand of Interest. In addition, ligands with molecular weight > 250 and outliers as shown on the geometry validation Tables will also be included. Each fit is shown from different orientation to approximate a three-dimensional view.







## 6.5 Other polymers [i](#)

There are no such residues in this entry.