



# Full wwPDB X-ray Structure Validation Report ⓘ

May 21, 2020 – 07:07 am BST

PDB ID : 6IBV  
Title : Crystal structure of NDM-1 beta-lactamase in complex with broad spectrum boronic inhibitor cpd 1  
Authors : Maso, L.; Quotadamo, A.; Bellio, P.; Montanari, M.; Celenza, G.; Venturelli, A.; Costi, M.P.; Tondi, D.; Cendron, L.  
Deposited on : 2018-11-30  
Resolution : 1.40 Å(reported)

This is a Full wwPDB X-ray Structure Validation Report for a publicly released PDB entry.

We welcome your comments at [validation@mail.wwpdb.org](mailto:validation@mail.wwpdb.org)

A user guide is available at

<https://www.wwpdb.org/validation/2017/XrayValidationReportHelp>

with specific help available everywhere you see the ⓘ symbol.

---

The following versions of software and data (see [references ⓘ](#)) were used in the production of this report:

MolProbity : 4.02b-467  
Mogul : 1.8.5 (274361), CSD as541be (2020)  
Xtriage (Phenix) : 1.13  
EDS : 2.11  
buster-report : 1.1.7 (2018)  
Percentile statistics : 20191225.v01 (using entries in the PDB archive December 25th 2019)  
Refmac : 5.8.0158  
CCP4 : 7.0.044 (Gargrove)  
Ideal geometry (proteins) : Engh & Huber (2001)  
Ideal geometry (DNA, RNA) : Parkinson et al. (1996)  
Validation Pipeline (wwPDB-VP) : 2.11

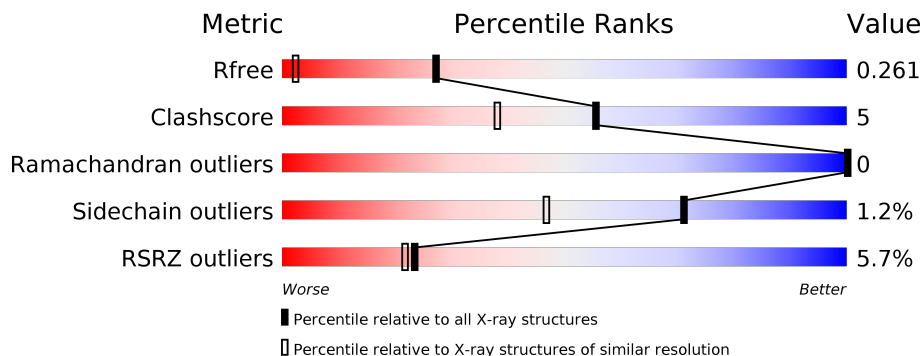
# 1 Overall quality at a glance

The following experimental techniques were used to determine the structure:

*X-RAY DIFFRACTION*

The reported resolution of this entry is 1.40 Å.

Percentile scores (ranging between 0-100) for global validation metrics of the entry are shown in the following graphic. The table shows the number of entries on which the scores are based.



Metric	Whole archive (#Entries)	Similar resolution (#Entries, resolution range(Å))
$R_{free}$	130704	1714 (1.40-1.40)
Clashscore	141614	1812 (1.40-1.40)
Ramachandran outliers	138981	1763 (1.40-1.40)
Sidechain outliers	138945	1762 (1.40-1.40)
RSRZ outliers	127900	1674 (1.40-1.40)

The table below summarises the geometric issues observed across the polymeric chains and their fit to the electron density. The red, orange, yellow and green segments on the lower bar indicate the fraction of residues that contain outliers for  $\geq 3$ , 2, 1 and 0 types of geometric quality criteria respectively. A grey segment represents the fraction of residues that are not modelled. The numeric value for each fraction is indicated below the corresponding segment, with a dot representing fractions  $\leq 5\%$ . The upper red bar (where present) indicates the fraction of residues that have poor fit to the electron density. The numeric value is given above the bar.

Mol	Chain	Length	Quality of chain
1	A	244	
1	B	244	

The following table lists non-polymeric compounds, carbohydrate monomers and non-standard residues in protein, DNA, RNA chains that are outliers for geometric or electron-density-fit criteria:

Mol	Type	Chain	Res	Chirality	Geometry	Clashes	Electron density
5	DMS	B	301	-	-	X	-

## 2 Entry composition [i](#)

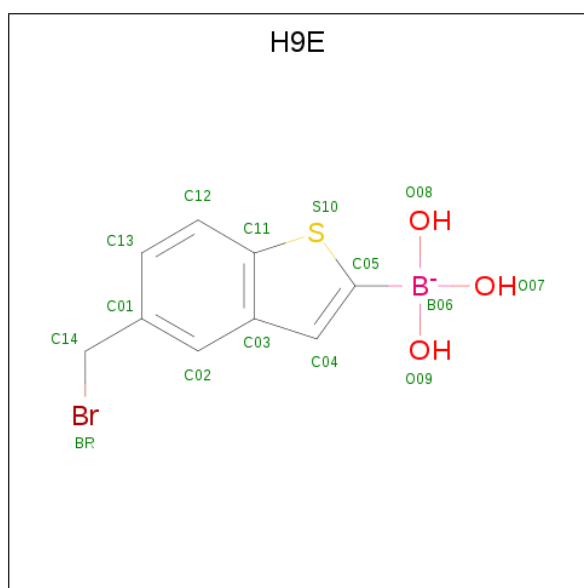
There are 7 unique types of molecules in this entry. The entry contains 4034 atoms, of which 0 are hydrogens and 0 are deuteriums.

In the tables below, the ZeroOcc column contains the number of atoms modelled with zero occupancy, the AltConf column contains the number of residues with at least one atom in alternate conformation and the Trace column contains the number of residues modelled with at most 2 atoms.

- Molecule 1 is a protein called Metallo-beta-lactamase type 2.

Mol	Chain	Residues	Atoms					ZeroOcc	AltConf	Trace
			Total	C	N	O	S			
1	A	227	Total	C	N	O	S	0	4	0
			1715	1077	306	325	7			
1	B	228	Total	C	N	O	S	0	4	0
			1727	1083	309	327	8			

- Molecule 2 is [5-(bromomethyl)-1-benzothiophen-2-yl]-tris(oxidanyl)boranuide (three-letter code: H9E) (formula: C<sub>9</sub>H<sub>9</sub>BBrO<sub>3</sub>S).



Mol	Chain	Residues	Atoms					ZeroOcc	AltConf	
			Total	B	Br	C	O			S
2	A	1	Total	B	Br	C	O	S	0	0
			15	1	1	9	3	1		
2	B	1	Total	B	Br	C	O	S	0	0
			15	1	1	9	3	1		

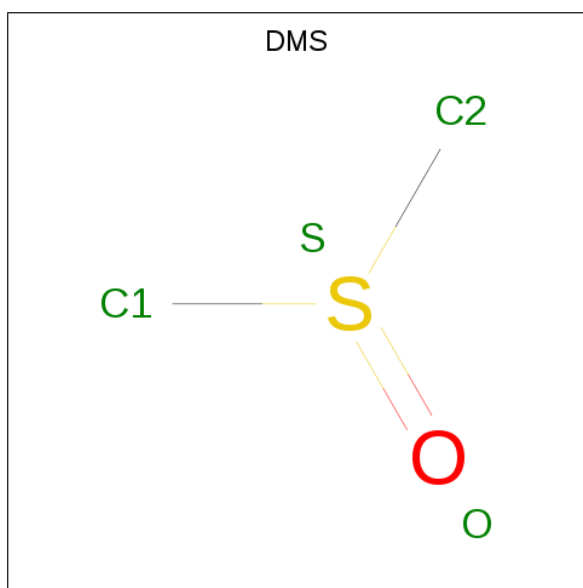
- Molecule 3 is ZINC ION (three-letter code: ZN) (formula: Zn).

Mol	Chain	Residues	Atoms		ZeroOcc	AltConf
3	B	2	Total	Zn	0	0
			2	2		
3	A	2	Total	Zn	0	0
			2	2		

- Molecule 4 is CALCIUM ION (three-letter code: CA) (formula: Ca).

Mol	Chain	Residues	Atoms		ZeroOcc	AltConf
4	A	3	Total	Ca	0	0
			3	3		

- Molecule 5 is DIMETHYL SULFOXIDE (three-letter code: DMS) (formula: C<sub>2</sub>H<sub>6</sub>OS).



Mol	Chain	Residues	Atoms				ZeroOcc	AltConf
5	B	1	Total	C	O	S	0	0
			4	2	1	1		

- Molecule 6 is MAGNESIUM ION (three-letter code: MG) (formula: Mg).

Mol	Chain	Residues	Atoms		ZeroOcc	AltConf
6	B	1	Total	Mg	0	0
			1	1		

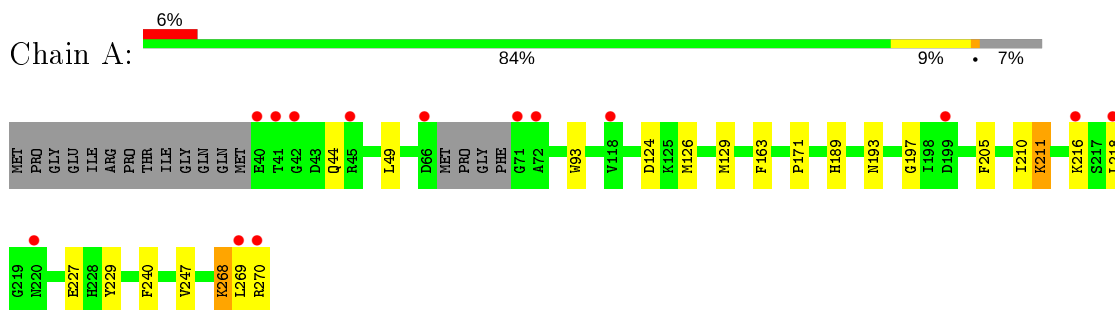
- Molecule 7 is water.

<b>Mol</b>	<b>Chain</b>	<b>Residues</b>	<b>Atoms</b>		<b>ZeroOcc</b>	<b>AltConf</b>
7	A	250	Total 250	O 250	0	0
7	B	300	Total 300	O 300	0	0

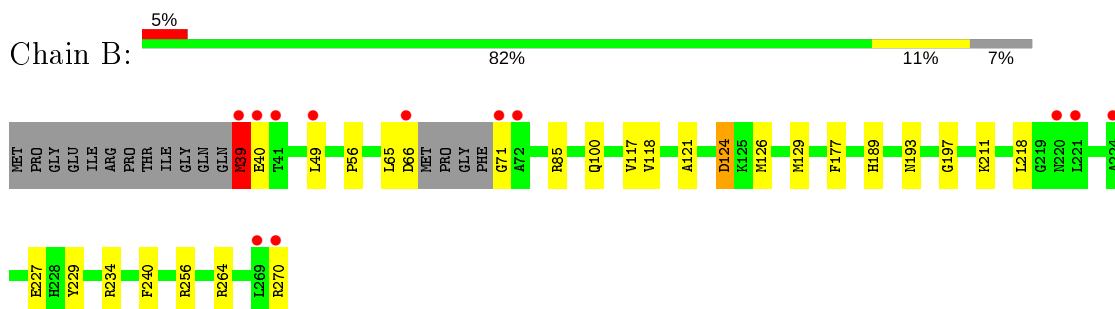
### 3 Residue-property plots [i](#)

These plots are drawn for all protein, RNA and DNA chains in the entry. The first graphic for a chain summarises the proportions of the various outlier classes displayed in the second graphic. The second graphic shows the sequence view annotated by issues in geometry and electron density. Residues are color-coded according to the number of geometric quality criteria for which they contain at least one outlier: green = 0, yellow = 1, orange = 2 and red = 3 or more. A red dot above a residue indicates a poor fit to the electron density ( $RSRZ > 2$ ). Stretches of 2 or more consecutive residues without any outlier are shown as a green connector. Residues present in the sample, but not in the model, are shown in grey.

- Molecule 1: Metallo-beta-lactamase type 2



- Molecule 1: Metallo-beta-lactamase type 2



## 4 Data and refinement statistics

Property	Value	Source
Space group	P 21 21 21	Depositor
Cell constants a, b, c, $\alpha$ , $\beta$ , $\gamma$	70.41Å 73.82Å 77.87Å 90.00° 90.00° 90.00°	Depositor
Resolution (Å)	42.67 – 1.40 42.63 – 1.40	Depositor EDS
% Data completeness (in resolution range)	99.7 (42.67-1.40) 99.8 (42.63-1.40)	Depositor EDS
$R_{merge}$	0.07	Depositor
$R_{sym}$	(Not available)	Depositor
$\langle I/\sigma(I) \rangle$ <sup>1</sup>	2.69 (at 1.40Å)	Xtrriage
Refinement program	REFMAC 5.8.0238	Depositor
R, $R_{free}$	0.218 , 0.252 0.227 , 0.261	Depositor DCC
$R_{free}$ test set	4263 reflections (5.31%)	wwPDB-VP
Wilson B-factor (Å <sup>2</sup> )	9.0	Xtrriage
Anisotropy	1.730	Xtrriage
Bulk solvent $k_{sol}$ (e/Å <sup>3</sup> ), $B_{sol}$ (Å <sup>2</sup> )	0.35 , 44.1	EDS
L-test for twinning <sup>2</sup>	$\langle  L  \rangle = 0.51$ , $\langle L^2 \rangle = 0.35$	Xtrriage
Estimated twinning fraction	0.003 for k,h,-l	Xtrriage
$F_o, F_c$ correlation	0.95	EDS
Total number of atoms	4034	wwPDB-VP
Average B, all atoms (Å <sup>2</sup> )	15.0	wwPDB-VP

Xtrriage's analysis on translational NCS is as follows: *The largest off-origin peak in the Patterson function is 4.43% of the height of the origin peak. No significant pseudotranslation is detected.*

<sup>1</sup> Intensities estimated from amplitudes.

<sup>2</sup> Theoretical values of  $\langle |L| \rangle$ ,  $\langle L^2 \rangle$  for acentric reflections are 0.5, 0.333 respectively for untwinned datasets, and 0.375, 0.2 for perfectly twinned datasets.



## 5 Model quality i

### 5.1 Standard geometry i

Bond lengths and bond angles in the following residue types are not validated in this section: ZN, MG, DMS, CA, H9E

The Z score for a bond length (or angle) is the number of standard deviations the observed value is removed from the expected value. A bond length (or angle) with  $|Z| > 5$  is considered an outlier worth inspection. RMSZ is the root-mean-square of all Z scores of the bond lengths (or angles).

Mol	Chain	Bond lengths		Bond angles	
		RMSZ	# Z  >5	RMSZ	# Z  >5
1	A	1.18	5/1758 (0.3%)	1.17	8/2391 (0.3%)
1	B	0.86	3/1767 (0.2%)	1.02	5/2404 (0.2%)
All	All	1.03	8/3525 (0.2%)	1.10	13/4795 (0.3%)

Chiral center outliers are detected by calculating the chiral volume of a chiral center and verifying if the center is modelled as a planar moiety or with the opposite hand. A planarity outlier is detected by checking planarity of atoms in a peptide group, atoms in a mainchain group or atoms of a sidechain that are expected to be planar.

Mol	Chain	#Chirality outliers	#Planarity outliers
1	A	0	3
1	B	0	1
All	All	0	4

All (8) bond length outliers are listed below:

Mol	Chain	Res	Type	Atoms	Z	Observed(Å)	Ideal(Å)
1	B	56	PRO	N-CD	-19.76	1.20	1.47
1	B	40	GLU	CD-OE1	-6.33	1.18	1.25
1	B	39	MET	C-N	-5.93	1.20	1.34
1	A	205	PHE	C-O	-5.51	1.12	1.23
1	A	247	VAL	C-O	-5.38	1.13	1.23
1	A	210	ILE	C-N	5.24	1.46	1.34
1	A	171	PRO	C-O	-5.12	1.13	1.23
1	A	227	GLU	CD-OE2	-5.08	1.20	1.25

All (13) bond angle outliers are listed below:

Mol	Chain	Res	Type	Atoms	Z	Observed(°)	Ideal(°)
1	B	39	MET	O-C-N	-11.02	105.07	122.70

*Continued on next page...*

Continued from previous page...

Mol	Chain	Res	Type	Atoms	Z	Observed(°)	Ideal(°)
1	A	211	LYS	O-C-N	-9.63	107.30	122.70
1	A	210	ILE	C-N-CA	-9.16	98.80	121.70
1	A	210	ILE	O-C-N	9.09	137.24	122.70
1	B	85	ARG	CG-CD-NE	-8.07	94.86	111.80
1	A	210	ILE	CA-C-N	-7.11	101.56	117.20
1	B	124	ASP	CB-CG-OD1	6.01	123.71	118.30
1	A	211	LYS	CA-C-N	5.90	130.17	117.20
1	A	270	ARG	NE-CZ-NH2	5.79	123.19	120.30
1	A	270	ARG	NE-CZ-NH1	-5.77	117.42	120.30
1	B	39	MET	CA-C-N	5.66	129.65	117.20
1	B	256	ARG	NE-CZ-NH2	-5.45	117.58	120.30
1	A	163	PHE	CB-CG-CD2	5.09	124.37	120.80

There are no chirality outliers.

All (4) planarity outliers are listed below:

Mol	Chain	Res	Type	Group
1	A	268[A]	LYS	Mainchain
1	A	268[B]	LYS	Mainchain
1	A	44[A]	GLN	Mainchain
1	B	39	MET	Mainchain

## 5.2 Too-close contacts

In the following table, the Non-H and H(model) columns list the number of non-hydrogen atoms and hydrogen atoms in the chain respectively. The H(added) column lists the number of hydrogen atoms added and optimized by MolProbity. The Clashes column lists the number of clashes within the asymmetric unit, whereas Symm-Clashes lists symmetry related clashes.

Mol	Chain	Non-H	H(model)	H(added)	Clashes	Symm-Clashes
1	A	1715	0	1675	10	0
1	B	1727	0	1680	25	0
2	A	15	0	0	0	0
2	B	15	0	0	1	0
3	A	2	0	0	0	0
3	B	2	0	0	0	0
4	A	3	0	0	0	0
5	B	4	0	6	8	0
6	B	1	0	0	0	0
7	A	250	0	0	1	0
7	B	300	0	0	1	0

Continued on next page...

*Continued from previous page...*

Mol	Chain	Non-H	H(model)	H(added)	Clashes	Symm-Clashes
All	All	4034	0	3361	35	0

The all-atom clashscore is defined as the number of clashes found per 1000 atoms (including hydrogen atoms). The all-atom clashscore for this structure is 5.

All (35) close contacts within the same asymmetric unit are listed below, sorted by their clash magnitude.

Atom-1	Atom-2	Interatomic distance (Å)	Clash overlap (Å)
1:B:264:ARG:HE	5:B:301:DMS:H12	1.36	0.90
1:A:211:LYS:HE3	1:A:218:LEU:O	1.78	0.83
1:B:264:ARG:HE	5:B:301:DMS:C1	1.93	0.81
1:B:234:ARG:HE	5:B:301:DMS:C2	1.99	0.76
1:B:234:ARG:HH21	5:B:301:DMS:H11	1.52	0.73
1:B:264:ARG:NE	5:B:301:DMS:H12	2.06	0.71
1:B:234:ARG:HH21	5:B:301:DMS:C1	2.06	0.68
1:A:218:LEU:HD12	1:A:269:LEU:HD11	1.79	0.64
1:A:211:LYS:HE3	1:A:218:LEU:C	2.19	0.64
1:B:66:ASP:OD2	7:B:401:HOH:O	2.15	0.63
1:A:218:LEU:CD1	1:A:269:LEU:HD11	2.29	0.63
1:B:124:ASP:OD1	2:B:302:H9E:O08	2.17	0.62
1:B:39:MET:O	1:B:39:MET:HG3	2.02	0.60
1:B:118:VAL:HG21	1:B:126:MET:HG2	1.86	0.58
1:B:49[B]:LEU:HD11	1:B:100:GLN:HB2	1.88	0.56
1:B:126:MET:O	1:B:129:MET:HG2	2.07	0.54
1:B:234:ARG:HE	5:B:301:DMS:H23	1.69	0.54
1:B:227:GLU:HG3	1:B:270:ARG:HH12	1.72	0.54
1:B:211:LYS:HE3	1:B:218:LEU:O	2.07	0.53
1:B:234:ARG:HE	5:B:301:DMS:H21	1.70	0.53
1:B:65:LEU:O	1:B:66:ASP:HB2	2.08	0.53
1:A:268[A]:LYS:HE2	7:A:499:HOH:O	2.10	0.50
1:B:270:ARG:HH11	1:B:270:ARG:HG2	1.76	0.50
1:A:197:GLY:HA3	1:A:240:PHE:CE1	2.50	0.47
1:A:211:LYS:CE	1:A:218:LEU:O	2.57	0.47
1:B:189:HIS:HB3	1:B:193:ASN:HD22	1.80	0.46
1:A:189:HIS:HB3	1:A:193:ASN:HD22	1.80	0.46
1:B:197:GLY:HA3	1:B:240:PHE:CE1	2.51	0.45
1:B:227:GLU:O	1:B:270:ARG:NH1	2.49	0.45
1:A:93:TRP:CZ3	1:A:124:ASP:HB3	2.52	0.44
1:A:126:MET:O	1:A:129:MET:HG2	2.18	0.44
1:B:117[A]:VAL:HG21	1:B:177:PHE:CE2	2.53	0.43
1:B:66:ASP:CB	1:B:71:GLY:O	2.67	0.43

*Continued on next page...*

Continued from previous page...

Atom-1	Atom-2	Interatomic distance (Å)	Clash overlap (Å)
1:B:66:ASP:HB2	1:B:71:GLY:O	2.19	0.42
1:B:121:ALA:HA	1:B:126:MET:SD	2.60	0.41

There are no symmetry-related clashes.

## 5.3 Torsion angles [i](#)

### 5.3.1 Protein backbone [i](#)

In the following table, the Percentiles column shows the percent Ramachandran outliers of the chain as a percentile score with respect to all X-ray entries followed by that with respect to entries of similar resolution.

The Analysed column shows the number of residues for which the backbone conformation was analysed, and the total number of residues.

Mol	Chain	Analysed	Favoured	Allowed	Outliers	Percentiles	
1	A	227/244 (93%)	225 (99%)	2 (1%)	0	100	100
1	B	228/244 (93%)	222 (97%)	6 (3%)	0	100	100
All	All	455/488 (93%)	447 (98%)	8 (2%)	0	100	100

There are no Ramachandran outliers to report.

### 5.3.2 Protein sidechains [i](#)

In the following table, the Percentiles column shows the percent sidechain outliers of the chain as a percentile score with respect to all X-ray entries followed by that with respect to entries of similar resolution.

The Analysed column shows the number of residues for which the sidechain conformation was analysed, and the total number of residues.

Mol	Chain	Analysed	Rotameric	Outliers	Percentiles	
1	A	174/184 (95%)	170 (98%)	4 (2%)	50	18
1	B	175/184 (95%)	174 (99%)	1 (1%)	86	70
All	All	349/368 (95%)	344 (99%)	5 (1%)	71	40

All (5) residues with a non-rotameric sidechain are listed below:

Mol	Chain	Res	Type
1	A	49	LEU
1	A	216[A]	LYS
1	A	216[C]	LYS
1	A	229	TYR
1	B	229	TYR

Some sidechains can be flipped to improve hydrogen bonding and reduce clashes. All (4) such sidechains are listed below:

Mol	Chain	Res	Type
1	A	151	GLN
1	A	193	ASN
1	B	176	ASN
1	B	193	ASN

### 5.3.3 RNA [i](#)

There are no RNA molecules in this entry.

## 5.4 Non-standard residues in protein, DNA, RNA chains [i](#)

There are no non-standard protein/DNA/RNA residues in this entry.

## 5.5 Carbohydrates [i](#)

There are no carbohydrates in this entry.

## 5.6 Ligand geometry [i](#)

Of 11 ligands modelled in this entry, 8 are monoatomic - leaving 3 for Mogul analysis.

In the following table, the Counts columns list the number of bonds (or angles) for which Mogul statistics could be retrieved, the number of bonds (or angles) that are observed in the model and the number of bonds (or angles) that are defined in the Chemical Component Dictionary. The Link column lists molecule types, if any, to which the group is linked. The Z score for a bond length (or angle) is the number of standard deviations the observed value is removed from the expected value. A bond length (or angle) with  $|Z| > 2$  is considered an outlier worth inspection. RMSZ is the root-mean-square of all Z scores of the bond lengths (or angles).

Mol	Type	Chain	Res	Link	Bond lengths			Bond angles		
					Counts	RMSZ	$\# Z  > 2$	Counts	RMSZ	$\# Z  > 2$
2	H9E	B	302	3	13,16,16	8.86	12 (92%)	7,24,24	0.68	0

Mol	Type	Chain	Res	Link	Bond lengths			Bond angles		
					Counts	RMSZ	# Z  > 2	Counts	RMSZ	# Z  > 2
2	H9E	A	301	3	13,16,16	8.85	12 (92%)	7,24,24	0.67	0
5	DMS	B	301	-	3,3,3	0.26	0	3,3,3	0.49	0

In the following table, the Chirals column lists the number of chiral outliers, the number of chiral centers analysed, the number of these observed in the model and the number defined in the Chemical Component Dictionary. Similar counts are reported in the Torsion and Rings columns. '-' means no outliers of that kind were identified.

Mol	Type	Chain	Res	Link	Chirals	Torsions	Rings
2	H9E	A	301	3	-	2/2/8/8	0/2/2/2
2	H9E	B	302	3	-	2/2/8/8	0/2/2/2

All (24) bond length outliers are listed below:

Mol	Chain	Res	Type	Atoms	Z	Observed(Å)	Ideal(Å)
2	B	302	H9E	BR-C14	-23.69	1.45	1.97
2	A	301	H9E	BR-C14	-23.67	1.45	1.97
2	B	302	H9E	C05-S10	-9.37	1.56	1.72
2	A	301	H9E	C05-S10	-9.34	1.56	1.72
2	B	302	H9E	C12-C13	7.43	1.52	1.36
2	A	301	H9E	C12-C13	7.43	1.52	1.36
2	A	301	H9E	B06-O07	6.90	1.67	1.47
2	A	301	H9E	B06-O08	6.90	1.67	1.47
2	B	302	H9E	B06-O07	6.89	1.67	1.47
2	B	302	H9E	B06-O08	6.88	1.67	1.47
2	A	301	H9E	B06-O09	6.86	1.67	1.47
2	B	302	H9E	B06-O09	6.86	1.67	1.47
2	A	301	H9E	C02-C01	6.38	1.52	1.37
2	B	302	H9E	C02-C01	6.37	1.52	1.37
2	B	302	H9E	C13-C01	5.90	1.51	1.38
2	A	301	H9E	C13-C01	5.85	1.51	1.38
2	A	301	H9E	C02-C03	5.77	1.55	1.42
2	B	302	H9E	C02-C03	5.74	1.55	1.42
2	B	302	H9E	C04-C03	5.40	1.61	1.41
2	A	301	H9E	C04-C03	5.36	1.61	1.41
2	B	302	H9E	C12-C11	5.16	1.55	1.40
2	A	301	H9E	C12-C11	5.11	1.55	1.40
2	B	302	H9E	C04-C05	2.60	1.46	1.38
2	A	301	H9E	C04-C05	2.58	1.46	1.38

There are no bond angle outliers.

There are no chirality outliers.

All (4) torsion outliers are listed below:

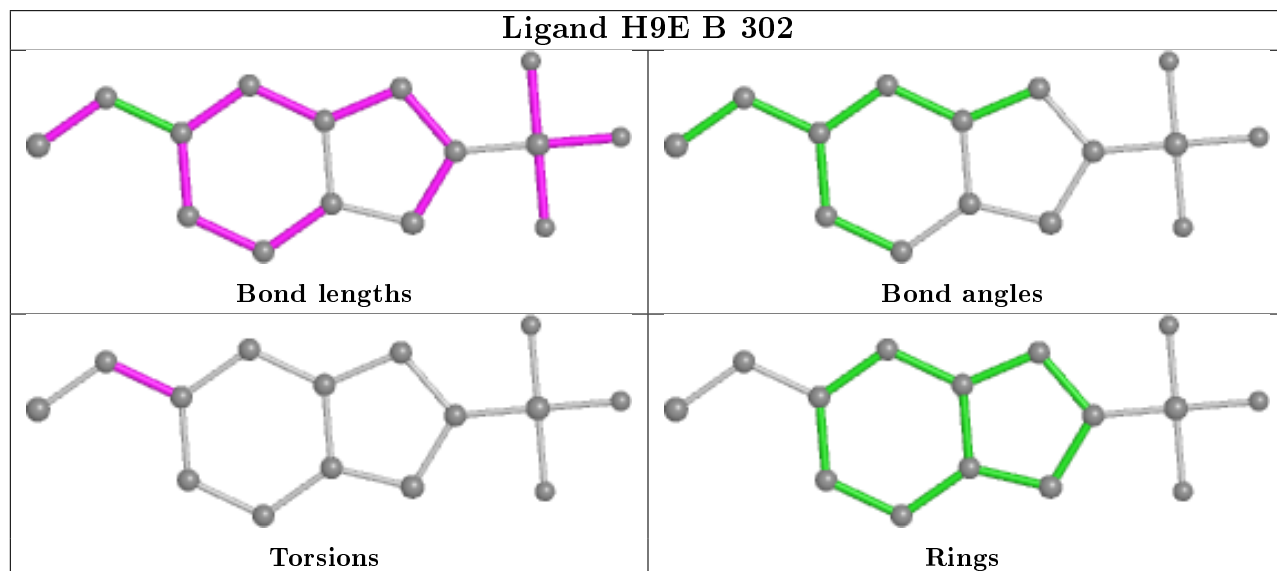
Mol	Chain	Res	Type	Atoms
2	A	301	H9E	C02-C01-C14-BR
2	A	301	H9E	C13-C01-C14-BR
2	B	302	H9E	C13-C01-C14-BR
2	B	302	H9E	C02-C01-C14-BR

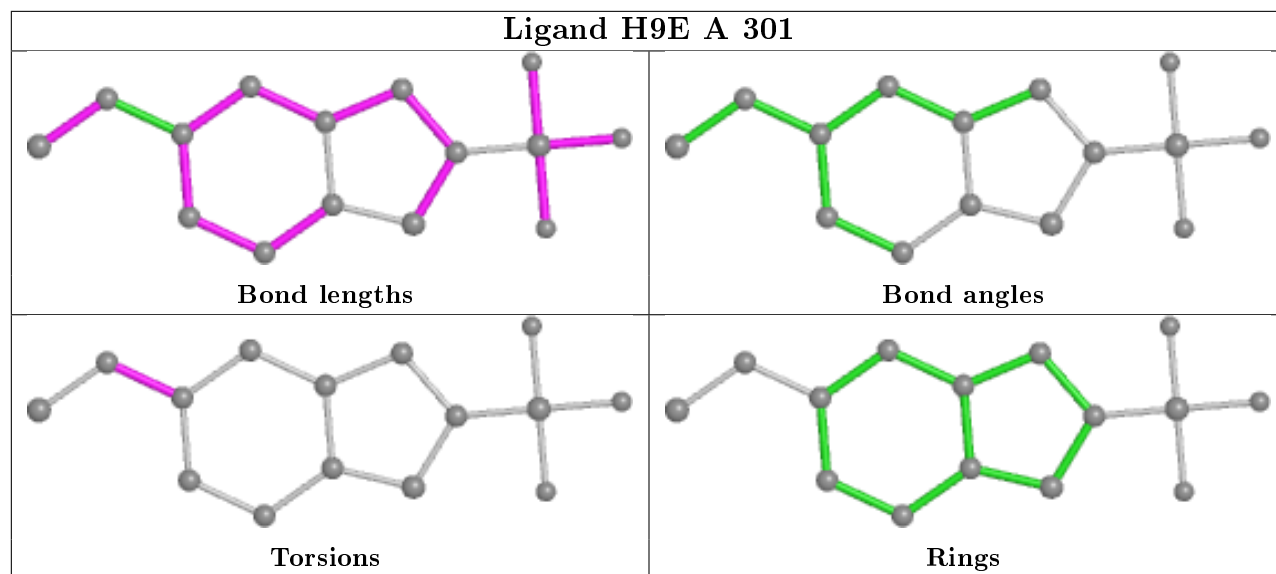
There are no ring outliers.

2 monomers are involved in 9 short contacts:

Mol	Chain	Res	Type	Clashes	Symm-Clashes
2	B	302	H9E	1	0
5	B	301	DMS	8	0

The following is a two-dimensional graphical depiction of Mogul quality analysis of bond lengths, bond angles, torsion angles, and ring geometry for all instances of the Ligand of Interest. In addition, ligands with molecular weight > 250 and outliers as shown on the validation Tables will also be included. For torsion angles, if less than 5% of the Mogul distribution of torsion angles is within 10 degrees of the torsion angle in question, then that torsion angle is considered an outlier. Any bond that is central to one or more torsion angles identified as an outlier by Mogul will be highlighted in the graph. For rings, the root-mean-square deviation (RMSD) between the ring in question and similar rings identified by Mogul is calculated over all ring torsion angles. If the average RMSD is greater than 60 degrees and the minimal RMSD between the ring in question and any Mogul-identified rings is also greater than 60 degrees, then that ring is considered an outlier. The outliers are highlighted in purple. The color gray indicates Mogul did not find sufficient equivalents in the CSD to analyse the geometry.





## 5.7 Other polymers [i](#)

There are no such residues in this entry.

## 5.8 Polymer linkage issues [i](#)

The following chains have linkage breaks:

Mol	Chain	Number of breaks
1	B	1

All chain breaks are listed below:

Model	Chain	Residue-1	Atom-1	Residue-2	Atom-2	Distance (Å)
1	B	39:MET	C	40:GLU	N	1.20



## 6 Fit of model and data [i](#)

### 6.1 Protein, DNA and RNA chains [i](#)

In the following table, the column labelled ‘#RSRZ> 2’ contains the number (and percentage) of RSRZ outliers, followed by percent RSRZ outliers for the chain as percentile scores relative to all X-ray entries and entries of similar resolution. The OWAB column contains the minimum, median, 95<sup>th</sup> percentile and maximum values of the occupancy-weighted average B-factor per residue. The column labelled ‘Q< 0.9’ lists the number of (and percentage) of residues with an average occupancy less than 0.9.

Mol	Chain	Analysed	<RSRZ>	#RSRZ>2	OWAB(Å <sup>2</sup> )	Q<0.9
1	A	227/244 (93%)	0.76	14 (6%) 20 19	7, 12, 24, 59	0
1	B	228/244 (93%)	0.76	12 (5%) 26 25	8, 11, 26, 65	0
All	All	455/488 (93%)	0.76	26 (5%) 23 22	7, 11, 25, 65	0

All (26) RSRZ outliers are listed below:

Mol	Chain	Res	Type	RSRZ
1	B	39	MET	6.0
1	A	41	THR	5.9
1	A	66	ASP	4.5
1	B	41	THR	4.1
1	B	71	GLY	3.8
1	B	270	ARG	3.4
1	A	270	ARG	3.3
1	A	72	ALA	3.2
1	A	220	ASN	3.0
1	B	72	ALA	3.0
1	A	42	GLY	2.9
1	A	71	GLY	2.9
1	A	218	LEU	2.8
1	A	40	GLU	2.8
1	A	216[A]	LYS	2.6
1	B	220	ASN	2.6
1	B	269	LEU	2.5
1	A	45	ARG	2.5
1	B	221	LEU	2.5
1	B	40	GLU	2.4
1	A	199	ASP	2.4
1	B	224	ALA	2.3
1	B	66	ASP	2.3
1	A	269	LEU	2.2

*Continued on next page...*

*Continued from previous page...*

Mol	Chain	Res	Type	RSRZ
1	B	49[A]	LEU	2.2
1	A	118	VAL	2.2

## 6.2 Non-standard residues in protein, DNA, RNA chains [i](#)

There are no non-standard protein/DNA/RNA residues in this entry.

## 6.3 Carbohydrates [i](#)

There are no carbohydrates in this entry.

## 6.4 Ligands [i](#)

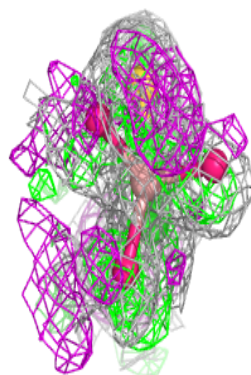
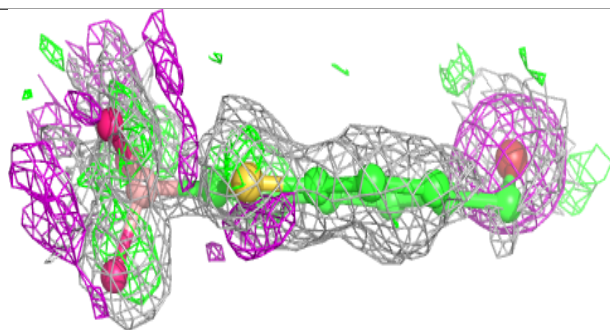
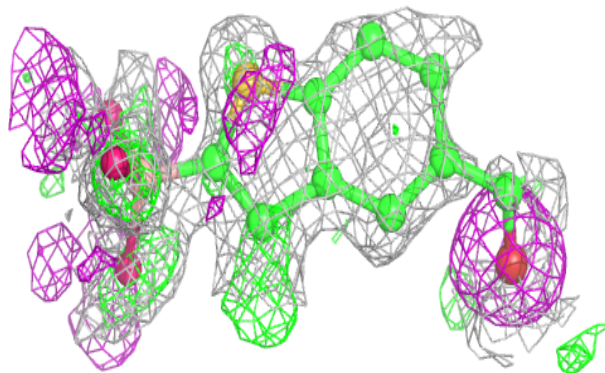
In the following table, the Atoms column lists the number of modelled atoms in the group and the number defined in the chemical component dictionary. The B-factors column lists the minimum, median, 95<sup>th</sup> percentile and maximum values of B factors of atoms in the group. The column labelled 'Q< 0.9' lists the number of atoms with occupancy less than 0.9.

Mol	Type	Chain	Res	Atoms	RSCC	RSR	B-factors(Å <sup>2</sup> )	Q<0.9
2	H9E	A	301	15/15	0.11	0.39	30,30,30,30	0
2	H9E	B	302	15/15	0.21	0.36	30,30,30,30	0
5	DMS	B	301	4/4	0.78	0.16	16,17,24,26	0
3	ZN	B	303	1/1	0.96	0.06	10,10,10,10	0
6	MG	B	305	1/1	0.97	0.08	12,12,12,12	0
4	CA	A	305	1/1	0.97	0.07	17,17,17,17	0
4	CA	A	304	1/1	0.98	0.06	17,17,17,17	0
4	CA	A	306	1/1	0.98	0.06	16,16,16,16	0
3	ZN	A	302	1/1	0.98	0.06	10,10,10,10	0
3	ZN	A	303	1/1	0.99	0.05	10,10,10,10	0
3	ZN	B	304	1/1	0.99	0.06	10,10,10,10	0

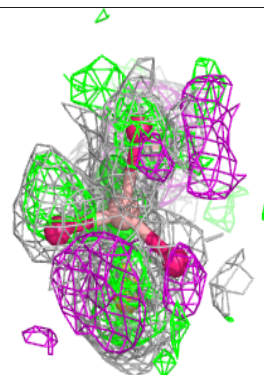
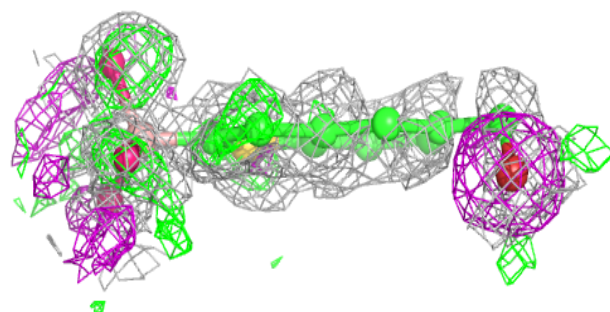
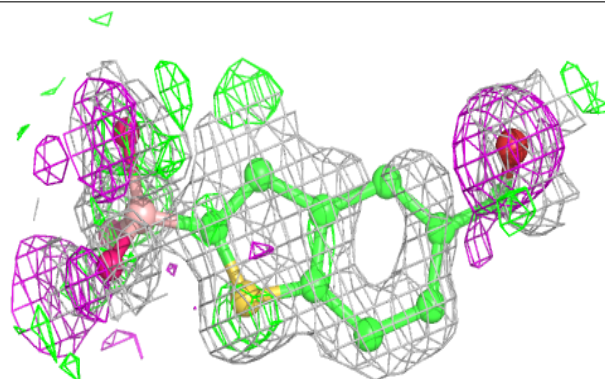
The following is a graphical depiction of the model fit to experimental electron density of all instances of the Ligand of Interest. In addition, ligands with molecular weight > 250 and outliers as shown on the geometry validation Tables will also be included. Each fit is shown from different orientation to approximate a three-dimensional view.

**Electron density around H9E A 301:**

$2mF_o-DF_c$  (at 0.7 rmsd) in gray  
 $mF_o-DF_c$  (at 3 rmsd) in purple (negative)  
and green (positive)

**Electron density around H9E B 302:**

$2mF_o-DF_c$  (at 0.7 rmsd) in gray  
 $mF_o-DF_c$  (at 3 rmsd) in purple (negative)  
and green (positive)



## 6.5 Other polymers

There are no such residues in this entry.