



Full wwPDB X-ray Structure Validation Report ⓘ

Aug 27, 2023 – 03:27 PM EDT

PDB ID : 3I5O
Title : The X-ray crystal structure of a thermophilic cellobiose binding protein bound with cellopentaose
Authors : Cuneo, M.J.; Hellinga, H.W.
Deposited on : 2009-07-06
Resolution : 1.50 Å(reported)

This is a Full wwPDB X-ray Structure Validation Report for a publicly released PDB entry.

We welcome your comments at validation@mail.wwpdb.org

A user guide is available at

<https://www.wwpdb.org/validation/2017/XrayValidationReportHelp>

with specific help available everywhere you see the ⓘ symbol.

The types of validation reports are described at

<http://www.wwpdb.org/validation/2017/FAQs#types>.

The following versions of software and data (see [references ⓘ](#)) were used in the production of this report:

MolProbity : 4.02b-467
Mogul : 1.8.5 (274361), CSD as541be (2020)
Xtriage (Phenix) : 1.13
EDS : 2.35
Percentile statistics : 20191225.v01 (using entries in the PDB archive December 25th 2019)
Refmac : 5.8.0158
CCP4 : 7.0.044 (Gargrove)
Ideal geometry (proteins) : Engh & Huber (2001)
Ideal geometry (DNA, RNA) : Parkinson et al. (1996)
Validation Pipeline (wwPDB-VP) : 2.35

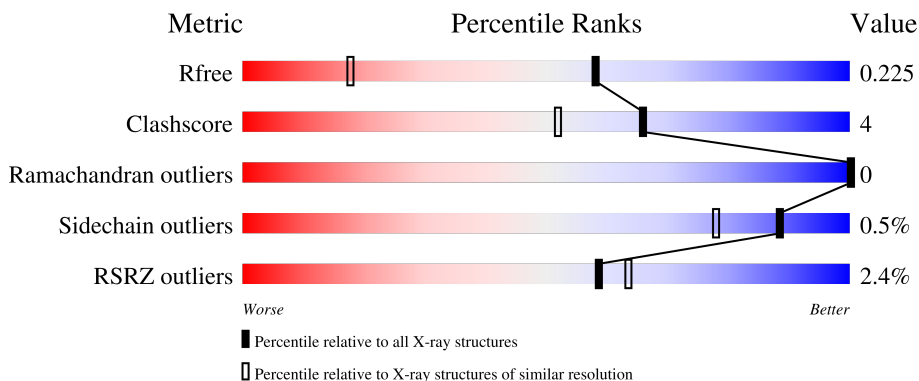
1 Overall quality at a glance

The following experimental techniques were used to determine the structure:

X-RAY DIFFRACTION

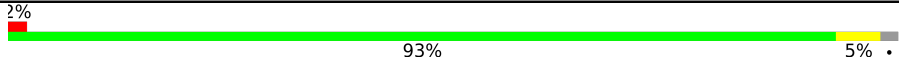
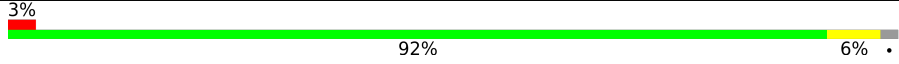

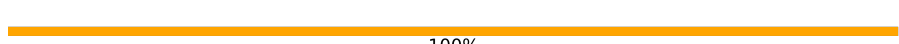
The reported resolution of this entry is 1.50 Å.

Percentile scores (ranging between 0-100) for global validation metrics of the entry are shown in the following graphic. The table shows the number of entries on which the scores are based.



Metric	Whole archive (#Entries)	Similar resolution (#Entries, resolution range(Å))
R_{free}	130704	2936 (1.50-1.50)
Clashscore	141614	3144 (1.50-1.50)
Ramachandran outliers	138981	3066 (1.50-1.50)
Sidechain outliers	138945	3064 (1.50-1.50)
RSRZ outliers	127900	2884 (1.50-1.50)

The table below summarises the geometric issues observed across the polymeric chains and their fit to the electron density. The red, orange, yellow and green segments of the lower bar indicate the fraction of residues that contain outliers for ≥ 3 , 2, 1 and 0 types of geometric quality criteria respectively. A grey segment represents the fraction of residues that are not modelled. The numeric value for each fraction is indicated below the corresponding segment, with a dot representing fractions $\leq 5\%$. The upper red bar (where present) indicates the fraction of residues that have poor fit to the electron density. The numeric value is given above the bar.

Mol	Chain	Length	Quality of chain
1	A	592	
1	B	592	
2	C	5	
2	D	5	

The following table lists non-polymeric compounds, carbohydrate monomers and non-standard

residues in protein, DNA, RNA chains that are outliers for geometric or electron-density-fit criteria:

Mol	Type	Chain	Res	Chirality	Geometry	Clashes	Electron density
2	BGC	C	4	-	-	X	-
2	BGC	D	3	-	-	X	-
2	BGC	D	4	-	-	X	-

2 Entry composition i

There are 3 unique types of molecules in this entry. The entry contains 10662 atoms, of which 0 are hydrogens and 0 are deuteriums.

In the tables below, the ZeroOcc column contains the number of atoms modelled with zero occupancy, the AltConf column contains the number of residues with at least one atom in alternate conformation and the Trace column contains the number of residues modelled with at most 2 atoms.

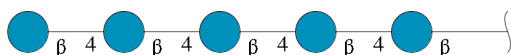
- Molecule 1 is a protein called Oligopeptide ABC transporter, periplasmic oligopeptide-binding protein.

Mol	Chain	Residues	Atoms					ZeroOcc	AltConf	Trace
			Total	C	N	O	S			
1	A	582	Total	C	N	O	S	0	14	0
			4853	3189	771	877	16			
1	B	582	Total	C	N	O	S	0	5	0
			4810	3153	766	878	13			

There are 14 discrepancies between the modelled and reference sequences:

Chain	Residue	Modelled	Actual	Comment	Reference
A	-1	MET	-	expression tag	UNP Q9WXN8
A	585	HIS	-	expression tag	UNP Q9WXN8
A	586	HIS	-	expression tag	UNP Q9WXN8
A	587	HIS	-	expression tag	UNP Q9WXN8
A	588	HIS	-	expression tag	UNP Q9WXN8
A	589	HIS	-	expression tag	UNP Q9WXN8
A	590	HIS	-	expression tag	UNP Q9WXN8
B	-1	MET	-	expression tag	UNP Q9WXN8
B	585	HIS	-	expression tag	UNP Q9WXN8
B	586	HIS	-	expression tag	UNP Q9WXN8
B	587	HIS	-	expression tag	UNP Q9WXN8
B	588	HIS	-	expression tag	UNP Q9WXN8
B	589	HIS	-	expression tag	UNP Q9WXN8
B	590	HIS	-	expression tag	UNP Q9WXN8

- Molecule 2 is an oligosaccharide called beta-D-glucopyranose-(1-4)-beta-D-glucopyranose-(1-4)-beta-D-glucopyranose-(1-4)-beta-D-glucopyranose-(1-4)-beta-D-glucopyranose.



Mol	Chain	Residues	Atoms			ZeroOcc	AltConf	Trace
2	C	5	Total	C	O	0	0	0
			56	30	26			
2	D	5	Total	C	O	0	0	0
			56	30	26			

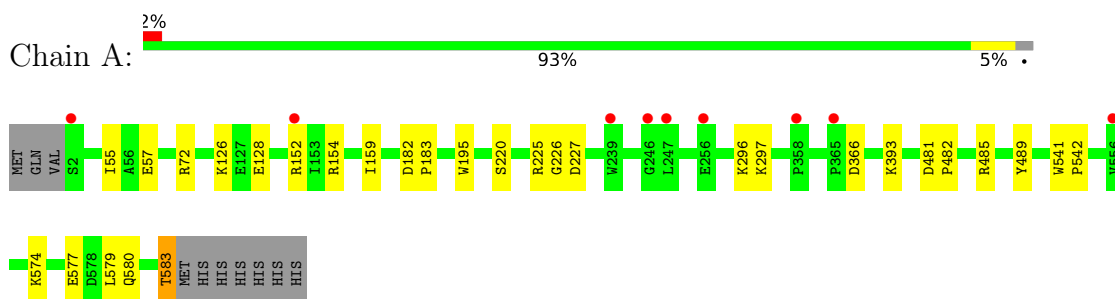
- Molecule 3 is water.

Mol	Chain	Residues	Atoms		ZeroOcc	AltConf
3	A	454	Total	O	0	0
			454	454		
3	B	433	Total	O	0	0
			433	433		

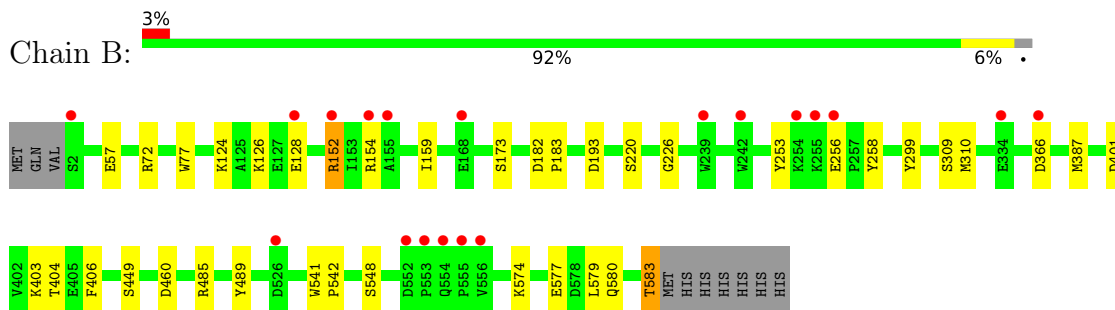
3 Residue-property plots [i](#)

These plots are drawn for all protein, RNA, DNA and oligosaccharide chains in the entry. The first graphic for a chain summarises the proportions of the various outlier classes displayed in the second graphic. The second graphic shows the sequence view annotated by issues in geometry and electron density. Residues are color-coded according to the number of geometric quality criteria for which they contain at least one outlier: green = 0, yellow = 1, orange = 2 and red = 3 or more. A red dot above a residue indicates a poor fit to the electron density ($RSRZ > 2$). Stretches of 2 or more consecutive residues without any outlier are shown as a green connector. Residues present in the sample, but not in the model, are shown in grey.

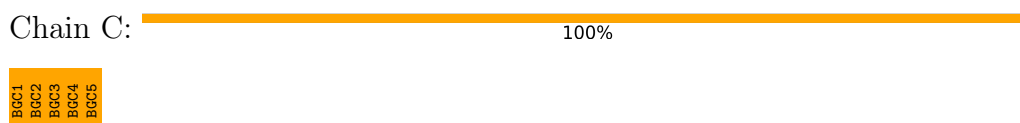
- Molecule 1: Oligopeptide ABC transporter, periplasmic oligopeptide-binding protein



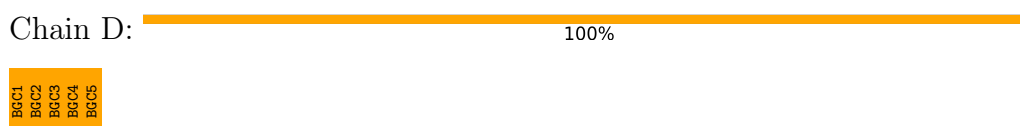
- Molecule 1: Oligopeptide ABC transporter, periplasmic oligopeptide-binding protein



- Molecule 2: beta-D-glucopyranose-(1-4)-beta-D-glucopyranose-(1-4)-beta-D-glucopyranose-(1-4)-beta-D-glucopyranose-(1-4)-beta-D-glucopyranose



- Molecule 2: beta-D-glucopyranose-(1-4)-beta-D-glucopyranose-(1-4)-beta-D-glucopyranose-(1-4)-beta-D-glucopyranose-(1-4)-beta-D-glucopyranose



4 Data and refinement statistics

Property	Value	Source
Space group	P 1 21 1	Depositor
Cell constants a, b, c, α , β , γ	62.11Å 101.46Å 108.29Å 90.00° 94.07° 90.00°	Depositor
Resolution (Å)	48.67 – 1.50 48.67 – 1.50	Depositor EDS
% Data completeness (in resolution range)	96.2 (48.67-1.50) 96.3 (48.67-1.50)	Depositor EDS
R_{merge}	0.05	Depositor
R_{sym}	(Not available)	Depositor
$\langle I/\sigma(I) \rangle$ ¹	3.66 (at 1.50Å)	Xtrriage
Refinement program	PHENIX	Depositor
R, R_{free}	0.204 , 0.225 0.203 , 0.225	Depositor DCC
R_{free} test set	10325 reflections (5.02%)	wwPDB-VP
Wilson B-factor (Å ²)	13.8	Xtrriage
Anisotropy	1.035	Xtrriage
Bulk solvent k_{sol} (e/Å ³), B_{sol} (Å ²)	0.34 , 41.7	EDS
L-test for twinning ²	$\langle L \rangle = 0.48$, $\langle L^2 \rangle = 0.31$	Xtrriage
Estimated twinning fraction	No twinning to report.	Xtrriage
F_o, F_c correlation	0.96	EDS
Total number of atoms	10662	wwPDB-VP
Average B, all atoms (Å ²)	23.0	wwPDB-VP

Xtrriage's analysis on translational NCS is as follows: *The largest off-origin peak in the Patterson function is 4.05% of the height of the origin peak. No significant pseudotranslation is detected.*

¹Intensities estimated from amplitudes.

²Theoretical values of $\langle |L| \rangle$, $\langle L^2 \rangle$ for acentric reflections are 0.5, 0.333 respectively for untwinned datasets, and 0.375, 0.2 for perfectly twinned datasets.

5 Model quality

5.1 Standard geometry

Bond lengths and bond angles in the following residue types are not validated in this section: BGC

The Z score for a bond length (or angle) is the number of standard deviations the observed value is removed from the expected value. A bond length (or angle) with $|Z| > 5$ is considered an outlier worth inspection. RMSZ is the root-mean-square of all Z scores of the bond lengths (or angles).

Mol	Chain	Bond lengths		Bond angles	
		RMSZ	# Z >5	RMSZ	# Z >5
1	A	0.31	0/5038	0.49	0/6879
1	B	0.30	0/4980	0.48	0/6798
All	All	0.31	0/10018	0.49	0/13677

There are no bond length outliers.

There are no bond angle outliers.

There are no chirality outliers.

There are no planarity outliers.

5.2 Too-close contacts

In the following table, the Non-H and H(model) columns list the number of non-hydrogen atoms and hydrogen atoms in the chain respectively. The H(added) column lists the number of hydrogen atoms added and optimized by MolProbity. The Clashes column lists the number of clashes within the asymmetric unit, whereas Symm-Clashes lists symmetry-related clashes.

Mol	Chain	Non-H	H(model)	H(added)	Clashes	Symm-Clashes
1	A	4853	0	4671	22	0
1	B	4810	0	4617	29	0
2	C	56	0	52	10	0
2	D	56	0	52	11	0
3	A	454	0	0	2	0
3	B	433	0	0	5	0
All	All	10662	0	9392	69	0

The all-atom clashscore is defined as the number of clashes found per 1000 atoms (including hydrogen atoms). The all-atom clashscore for this structure is 4.

All (69) close contacts within the same asymmetric unit are listed below, sorted by their clash

magnitude.

Atom-1	Atom-2	Interatomic distance (Å)	Clash overlap (Å)
2:C:3:BGC:HD	2:C:4:BGC:C1	1.75	0.93
2:D:3:BGC:HD	2:D:4:BGC:C1	1.78	0.91
2:D:2:BGC:HD	2:D:3:BGC:C1	1.86	0.85
1:A:296:LYS:O	1:B:152:ARG:HD3	1.77	0.84
2:C:4:BGC:HD	2:C:5:BGC:C1	1.99	0.76
2:D:4:BGC:HD	2:D:5:BGC:C1	2.01	0.73
1:A:57:GLU:HB3	1:A:72:ARG:HG2	1.70	0.72
1:B:57:GLU:HB3	1:B:72:ARG:HG2	1.70	0.72
2:D:2:BGC:C4	2:D:3:BGC:C1	2.69	0.70
2:D:3:BGC:C4	2:D:4:BGC:C1	2.70	0.70
2:C:2:BGC:C4	2:C:3:BGC:C1	2.70	0.69
2:C:4:BGC:C4	2:C:5:BGC:C1	2.73	0.66
2:C:3:BGC:C4	2:C:4:BGC:C1	2.73	0.66
1:A:485:ARG:HG2	1:A:489:TYR:CE2	2.33	0.64
1:B:485:ARG:HG2	1:B:489:TYR:CE2	2.33	0.64
1:A:126:LYS:HG2	1:A:128:GLU:OE2	2.01	0.60
2:D:4:BGC:C4	2:D:5:BGC:C1	2.79	0.60
1:B:126:LYS:HG2	1:B:128:GLU:OE2	2.02	0.59
1:A:55[B]:ILE:HD13	1:A:195:TRP:CZ2	2.37	0.58
1:A:393:LYS:HE2	1:B:193:ASP:OD2	2.04	0.56
2:C:3:BGC:O4	2:C:4:BGC:C2	2.53	0.56
1:A:297:LYS:HA	1:B:152:ARG:HG3	1.88	0.55
2:D:1:BGC:C4	2:D:2:BGC:C1	2.86	0.53
1:A:182:ASP:HB2	1:A:183:PRO:CD	2.38	0.53
1:A:182:ASP:HB2	1:A:183:PRO:HD2	1.91	0.52
1:B:182:ASP:HB2	1:B:183:PRO:CD	2.39	0.52
1:B:154:ARG:HB2	1:B:159:ILE:HD11	1.92	0.51
1:B:182:ASP:HB2	1:B:183:PRO:HD2	1.92	0.51
2:C:2:BGC:O4	2:C:3:BGC:C2	2.58	0.51
1:A:154:ARG:HB2	1:A:159:ILE:HD11	1.92	0.51
2:D:2:BGC:O4	2:D:3:BGC:C2	2.60	0.50
1:A:485:ARG:HG2	1:A:489:TYR:CZ	2.47	0.50
2:C:1:BGC:C4	2:C:2:BGC:C1	2.90	0.50
1:A:366:ASP:OD2	1:A:366:ASP:C	2.50	0.49
2:D:3:BGC:O4	2:D:4:BGC:C2	2.59	0.49
2:C:1:BGC:O4	2:C:2:BGC:C2	2.59	0.49
1:B:485:ARG:HG2	1:B:489:TYR:CZ	2.47	0.49
2:D:4:BGC:O4	2:D:5:BGC:C2	2.61	0.48
1:B:366:ASP:C	1:B:366:ASP:OD2	2.51	0.48
2:C:4:BGC:O4	2:C:5:BGC:C2	2.61	0.47
1:B:256:GLU:CG	3:B:2655:HOH:O	2.62	0.47

Continued on next page...

Continued from previous page...

Atom-1	Atom-2	Interatomic distance (Å)	Clash overlap (Å)
1:B:299:TYR:CD2	1:B:387:MET:CE	2.99	0.46
1:A:128:GLU:H	1:A:128:GLU:CD	2.20	0.45
1:B:574:LYS:HA	1:B:577:GLU:OE1	2.16	0.45
1:A:574:LYS:HA	1:A:577:GLU:OE1	2.16	0.45
1:A:152:ARG:HE	1:A:152:ARG:HB3	1.50	0.45
1:B:152:ARG:HE	1:B:152:ARG:HB3	1.57	0.45
1:B:128:GLU:H	1:B:128:GLU:CD	2.20	0.45
1:B:124:LYS:NZ	3:B:2667:HOH:O	2.50	0.44
1:B:256:GLU:HG3	3:B:2655:HOH:O	2.17	0.44
1:B:541:TRP:CG	1:B:542:PRO:HD3	2.53	0.44
1:B:548:SER:HB2	3:B:2375:HOH:O	2.19	0.43
1:B:226:GLY:HA2	3:B:2360:HOH:O	2.19	0.43
1:A:226:GLY:HA2	3:A:2355:HOH:O	2.19	0.42
1:A:225[A]:ARG:NH1	1:A:227:ASP:OD2	2.53	0.42
2:D:1:BGC:O4	2:D:2:BGC:C2	2.66	0.42
1:B:309:SER:O	1:B:310:MET:HB2	2.20	0.42
1:A:580:GLN:O	1:A:583:THR:OG1	2.34	0.41
1:B:401:ASP:OD1	1:B:403[B]:LYS:NZ	2.53	0.41
1:B:579:LEU:HD23	1:B:579:LEU:C	2.41	0.41
1:A:541:TRP:CG	1:A:542:PRO:HD3	2.55	0.41
1:A:579:LEU:C	1:A:579:LEU:HD23	2.40	0.41
1:B:580:GLN:O	1:B:583:THR:OG1	2.33	0.41
1:B:404:THR:HB	1:B:406:PHE:CZ	2.56	0.41
1:B:253:TYR:HB2	1:B:258:TYR:HA	2.03	0.41
1:B:449:SER:HB2	1:B:460:ASP:HB3	2.02	0.41
1:A:225[A]:ARG:HG3	3:A:2416:HOH:O	2.20	0.40
1:A:481:ASP:HA	1:A:482:PRO:HD3	1.93	0.40
1:B:77:TRP:CZ3	1:B:173:SER:HB3	2.57	0.40

There are no symmetry-related clashes.

5.3 Torsion angles [i](#)

5.3.1 Protein backbone [i](#)

In the following table, the Percentiles column shows the percent Ramachandran outliers of the chain as a percentile score with respect to all X-ray entries followed by that with respect to entries of similar resolution.

The Analysed column shows the number of residues for which the backbone conformation was analysed, and the total number of residues.

Mol	Chain	Analysed	Favoured	Allowed	Outliers	Percentiles	
1	A	594/592 (100%)	578 (97%)	16 (3%)	0	100	100
1	B	585/592 (99%)	570 (97%)	15 (3%)	0	100	100
All	All	1179/1184 (100%)	1148 (97%)	31 (3%)	0	100	100

There are no Ramachandran outliers to report.

5.3.2 Protein sidechains [i](#)

In the following table, the Percentiles column shows the percent sidechain outliers of the chain as a percentile score with respect to all X-ray entries followed by that with respect to entries of similar resolution.

The Analysed column shows the number of residues for which the sidechain conformation was analysed, and the total number of residues.

Mol	Chain	Analysed	Rotameric	Outliers	Percentiles	
1	A	509/514 (99%)	507 (100%)	2 (0%)	91	82
1	B	506/514 (98%)	503 (99%)	3 (1%)	86	74
All	All	1015/1028 (99%)	1010 (100%)	5 (0%)	88	78

All (5) residues with a non-rotameric sidechain are listed below:

Mol	Chain	Res	Type
1	A	220	SER
1	A	583	THR
1	B	152	ARG
1	B	220	SER
1	B	583	THR

Sometimes sidechains can be flipped to improve hydrogen bonding and reduce clashes. There are no such sidechains identified.

5.3.3 RNA [i](#)

There are no RNA molecules in this entry.

5.4 Non-standard residues in protein, DNA, RNA chains [i](#)

There are no non-standard protein/DNA/RNA residues in this entry.

5.5 Carbohydrates i

10 monosaccharides are modelled in this entry.

In the following table, the Counts columns list the number of bonds (or angles) for which Mogul statistics could be retrieved, the number of bonds (or angles) that are observed in the model and the number of bonds (or angles) that are defined in the Chemical Component Dictionary. The Link column lists molecule types, if any, to which the group is linked. The Z score for a bond length (or angle) is the number of standard deviations the observed value is removed from the expected value. A bond length (or angle) with $|Z| > 2$ is considered an outlier worth inspection. RMSZ is the root-mean-square of all Z scores of the bond lengths (or angles).

Mol	Type	Chain	Res	Link	Bond lengths			Bond angles		
					Counts	RMSZ	# Z > 2	Counts	RMSZ	# Z > 2
2	BGC	C	1	2	12,12,12	0.44	0	17,17,17	1.40	2 (11%)
2	BGC	C	2	2	11,11,12	0.61	0	15,15,17	3.36	4 (26%)
2	BGC	C	3	2	11,11,12	0.65	0	15,15,17	3.31	6 (40%)
2	BGC	C	4	2	11,11,12	0.67	0	15,15,17	3.40	5 (33%)
2	BGC	C	5	2	11,11,12	0.57	0	15,15,17	2.51	4 (26%)
2	BGC	D	1	2	12,12,12	0.43	0	17,17,17	1.48	2 (11%)
2	BGC	D	2	2	11,11,12	0.61	0	15,15,17	3.04	5 (33%)
2	BGC	D	3	2	11,11,12	0.66	0	15,15,17	3.29	7 (46%)
2	BGC	D	4	2	11,11,12	0.46	0	15,15,17	3.38	6 (40%)
2	BGC	D	5	2	11,11,12	0.59	0	15,15,17	2.33	3 (20%)

In the following table, the Chirals column lists the number of chiral outliers, the number of chiral centers analysed, the number of these observed in the model and the number defined in the Chemical Component Dictionary. Similar counts are reported in the Torsion and Rings columns. '-' means no outliers of that kind were identified.

Mol	Type	Chain	Res	Link	Chirals	Torsions	Rings
2	BGC	C	1	2	-	1/2/22/22	0/1/1/1
2	BGC	C	2	2	-	0/2/19/22	0/1/1/1
2	BGC	C	3	2	-	0/2/19/22	0/1/1/1
2	BGC	C	4	2	-	0/2/19/22	0/1/1/1
2	BGC	C	5	2	-	0/2/19/22	0/1/1/1
2	BGC	D	1	2	-	1/2/22/22	0/1/1/1
2	BGC	D	2	2	-	0/2/19/22	0/1/1/1
2	BGC	D	3	2	-	0/2/19/22	0/1/1/1
2	BGC	D	4	2	-	0/2/19/22	0/1/1/1
2	BGC	D	5	2	-	0/2/19/22	0/1/1/1

There are no bond length outliers.

All (44) bond angle outliers are listed below:

Mol	Chain	Res	Type	Atoms	Z	Observed(°)	Ideal(°)
2	C	4	BGC	C1-C2-C3	-8.31	99.45	109.67
2	C	2	BGC	C1-O5-C5	-8.20	101.08	112.19
2	D	4	BGC	C1-C2-C3	-8.13	99.68	109.67
2	D	4	BGC	C1-O5-C5	-8.03	101.32	112.19
2	C	3	BGC	C1-O5-C5	-7.64	101.85	112.19
2	C	4	BGC	C1-O5-C5	-7.61	101.88	112.19
2	D	3	BGC	C1-O5-C5	-7.60	101.89	112.19
2	C	3	BGC	C1-C2-C3	-7.40	100.57	109.67
2	D	3	BGC	C1-C2-C3	-7.36	100.62	109.67
2	D	2	BGC	C1-O5-C5	-6.90	102.84	112.19
2	C	5	BGC	C1-C2-C3	-6.77	101.34	109.67
2	C	2	BGC	C1-C2-C3	-6.48	101.70	109.67
2	D	5	BGC	C1-C2-C3	-6.18	102.07	109.67
2	D	2	BGC	C1-C2-C3	-5.79	102.55	109.67
2	D	5	BGC	C1-O5-C5	-5.06	105.34	112.19
2	D	2	BGC	O4-C4-C3	-4.97	98.85	110.35
2	C	2	BGC	C3-C4-C5	4.81	118.81	110.24
2	C	5	BGC	C1-O5-C5	-4.74	105.76	112.19
2	C	2	BGC	O4-C4-C3	-4.60	99.71	110.35
2	D	1	BGC	C3-C4-C5	4.42	118.12	110.24
2	C	4	BGC	C3-C4-C5	4.32	117.95	110.24
2	D	2	BGC	C3-C4-C5	4.11	117.56	110.24
2	C	1	BGC	C3-C4-C5	3.77	116.96	110.24
2	C	3	BGC	C3-C4-C5	3.62	116.70	110.24
2	C	3	BGC	O4-C4-C5	-3.60	100.36	109.30
2	D	4	BGC	C3-C4-C5	3.55	116.58	110.24
2	D	3	BGC	O5-C5-C6	3.46	112.62	107.20
2	C	4	BGC	O4-C4-C3	-3.29	102.74	110.35
2	D	5	BGC	O5-C1-C2	-3.20	105.83	110.77
2	D	3	BGC	O4-C4-C5	-3.18	101.40	109.30
2	C	5	BGC	O5-C1-C2	-3.16	105.89	110.77
2	D	3	BGC	C3-C4-C5	3.14	115.83	110.24
2	C	3	BGC	O5-C5-C6	3.03	111.96	107.20
2	D	4	BGC	O4-C4-C3	-2.99	103.43	110.35
2	D	3	BGC	O4-C4-C3	-2.93	103.58	110.35
2	C	5	BGC	O5-C5-C6	2.63	111.33	107.20
2	C	1	BGC	O5-C1-C2	-2.53	105.78	110.28
2	D	2	BGC	O5-C5-C6	2.50	111.13	107.20
2	D	4	BGC	O5-C5-C6	2.25	110.73	107.20
2	C	3	BGC	O5-C5-C4	-2.25	105.36	110.83
2	D	1	BGC	O5-C1-C2	-2.16	106.42	110.28
2	C	4	BGC	C2-C3-C4	-2.13	107.21	110.89

Continued on next page...

Continued from previous page...

Mol	Chain	Res	Type	Atoms	Z	Observed(°)	Ideal(°)
2	D	4	BGC	O5-C1-C2	-2.04	107.62	110.77
2	D	3	BGC	O5-C5-C4	-2.03	105.89	110.83

There are no chirality outliers.

All (2) torsion outliers are listed below:

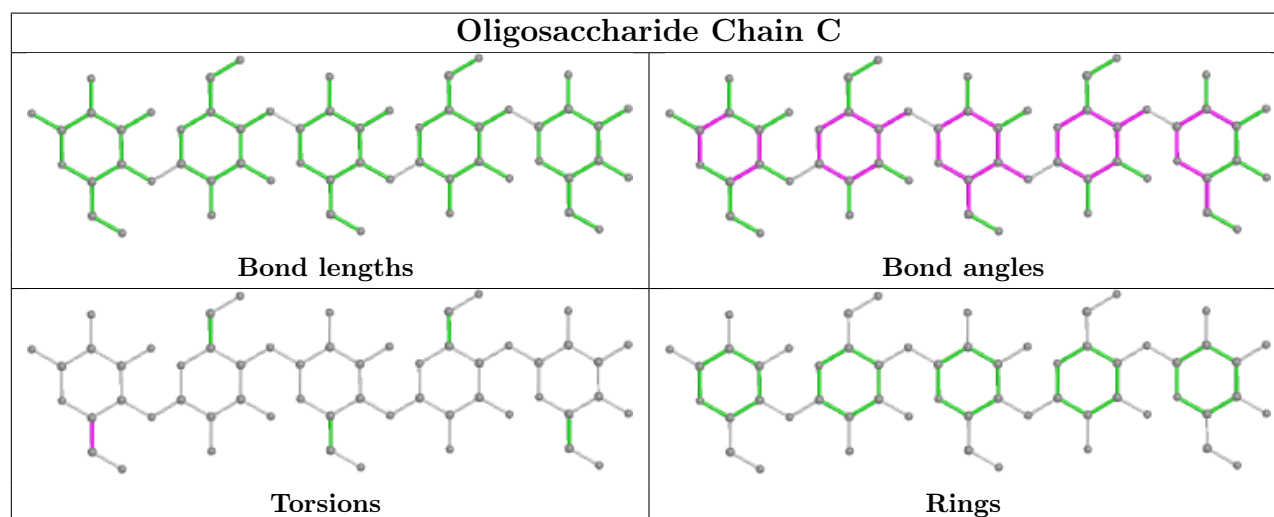
Mol	Chain	Res	Type	Atoms
2	C	1	BGC	C4-C5-C6-O6
2	D	1	BGC	C4-C5-C6-O6

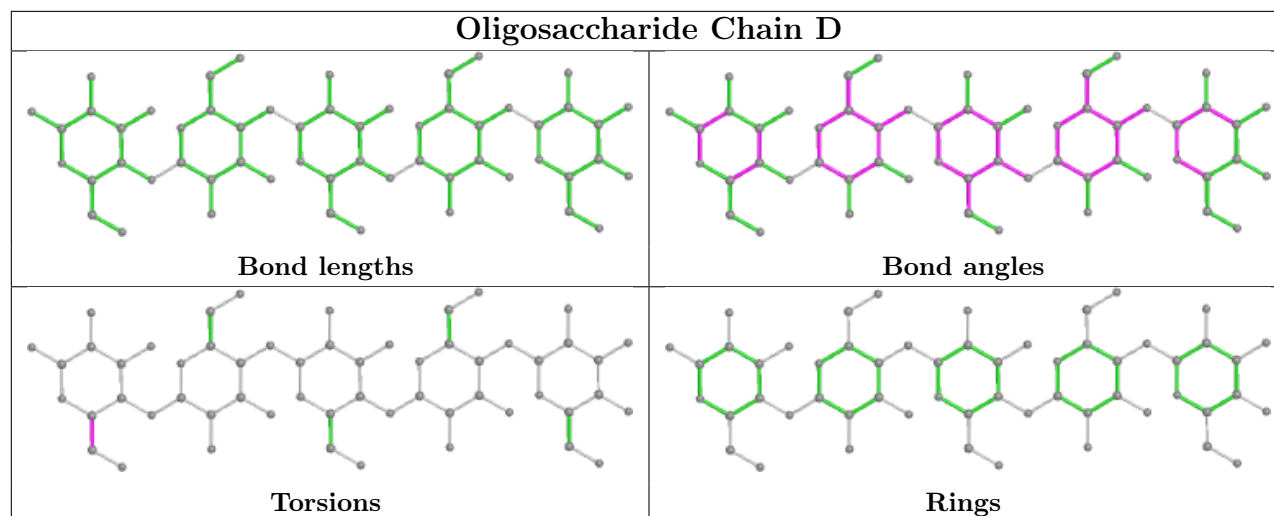
There are no ring outliers.

10 monomers are involved in 21 short contacts:

Mol	Chain	Res	Type	Clashes	Symm-Clashes
2	C	3	BGC	5	0
2	D	4	BGC	6	0
2	C	2	BGC	4	0
2	D	2	BGC	5	0
2	C	5	BGC	3	0
2	D	3	BGC	6	0
2	C	1	BGC	2	0
2	D	5	BGC	3	0
2	C	4	BGC	6	0
2	D	1	BGC	2	0

The following is a two-dimensional graphical depiction of Mogul quality analysis of bond lengths, bond angles, torsion angles, and ring geometry for oligosaccharide.





5.6 Ligand geometry [i](#)

There are no ligands in this entry.

5.7 Other polymers [i](#)

There are no such residues in this entry.

5.8 Polymer linkage issues [i](#)

There are no chain breaks in this entry.

6 Fit of model and data

6.1 Protein, DNA and RNA chains

In the following table, the column labelled ‘#RSRZ > 2’ contains the number (and percentage) of RSRZ outliers, followed by percent RSRZ outliers for the chain as percentile scores relative to all X-ray entries and entries of similar resolution. The OWAB column contains the minimum, median, 95th percentile and maximum values of the occupancy-weighted average B-factor per residue. The column labelled ‘Q < 0.9’ lists the number of (and percentage) of residues with an average occupancy less than 0.9.

Mol	Chain	Analysed	<RSRZ>	#RSRZ>2	OWAB(Å ²)	Q<0.9
1	A	582/592 (98%)	0.03	9 (1%) 73 78	13, 20, 37, 55	0
1	B	582/592 (98%)	0.15	19 (3%) 46 51	14, 21, 38, 55	0
All	All	1164/1184 (98%)	0.09	28 (2%) 59 63	13, 21, 37, 55	0

All (28) RSRZ outliers are listed below:

Mol	Chain	Res	Type	RSRZ
1	B	556	VAL	3.9
1	B	2	SER	3.6
1	A	2	SER	3.4
1	A	152	ARG	3.3
1	B	553	PRO	3.0
1	A	556	VAL	3.0
1	B	552	ASP	2.9
1	A	256	GLU	2.7
1	B	555	PRO	2.7
1	B	152	ARG	2.6
1	B	154	ARG	2.6
1	B	128	GLU	2.6
1	A	239	TRP	2.4
1	B	334	GLU	2.4
1	B	256	GLU	2.3
1	A	247	LEU	2.3
1	B	554	GLN	2.2
1	B	155	ALA	2.2
1	A	246	GLY	2.2
1	A	365	PRO	2.2
1	B	255	LYS	2.1
1	B	239	TRP	2.1
1	B	242	TRP	2.1
1	B	168	GLU	2.1

Continued on next page...

Continued from previous page...

Mol	Chain	Res	Type	RSRZ
1	B	366	ASP	2.1
1	A	358	PRO	2.0
1	B	254	LYS	2.0
1	B	526	ASP	2.0

6.2 Non-standard residues in protein, DNA, RNA chains [i](#)

There are no non-standard protein/DNA/RNA residues in this entry.

6.3 Carbohydrates [i](#)

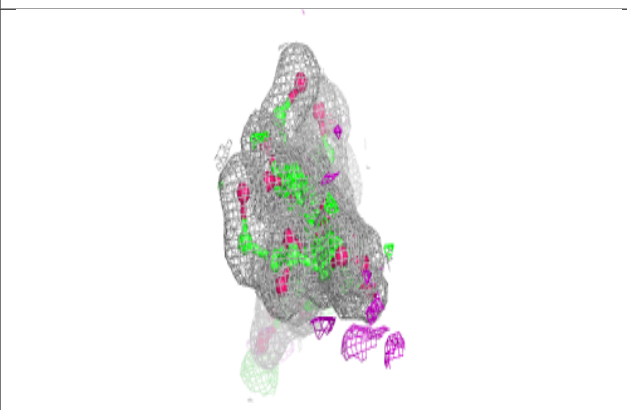
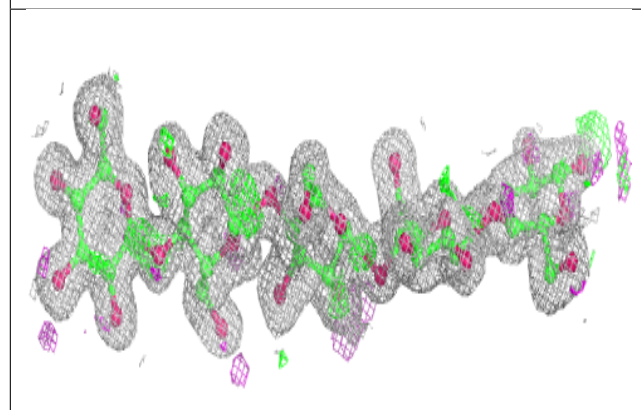
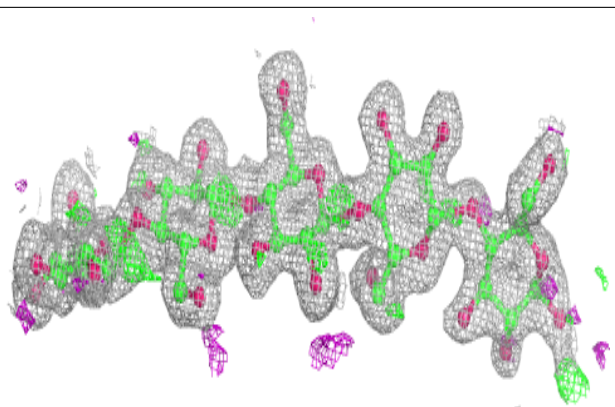
In the following table, the Atoms column lists the number of modelled atoms in the group and the number defined in the chemical component dictionary. The B-factors column lists the minimum, median, 95th percentile and maximum values of B factors of atoms in the group. The column labelled 'Q< 0.9' lists the number of atoms with occupancy less than 0.9.

Mol	Type	Chain	Res	Atoms	RSCC	RSR	B-factors(Å ²)	Q<0.9
2	BGC	C	1	12/12	0.76	0.15	23,29,33,37	1
2	BGC	D	1	12/12	0.79	0.17	23,30,34,38	0
2	BGC	D	2	11/12	0.88	0.10	17,19,24,26	0
2	BGC	C	2	11/12	0.89	0.09	17,19,25,25	0
2	BGC	D	3	11/12	0.91	0.10	17,18,20,21	0
2	BGC	D	4	11/12	0.91	0.11	13,15,21,26	0
2	BGC	C	3	11/12	0.92	0.10	15,17,21,22	0
2	BGC	C	4	11/12	0.94	0.10	12,15,19,23	0
2	BGC	C	5	11/12	0.94	0.09	12,13,15,15	0
2	BGC	D	5	11/12	0.95	0.10	13,14,16,16	0

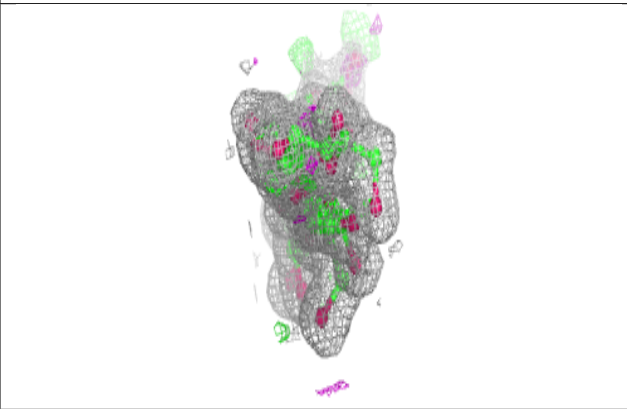
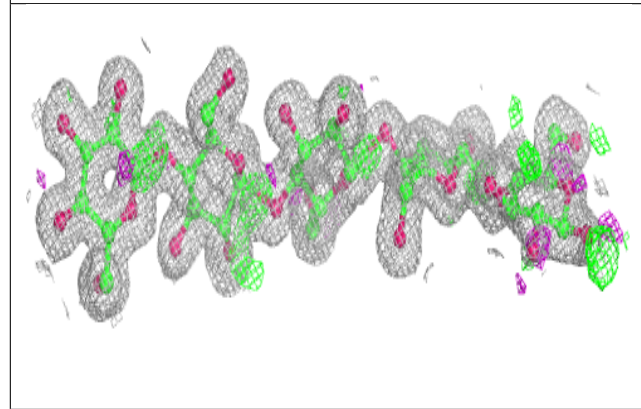
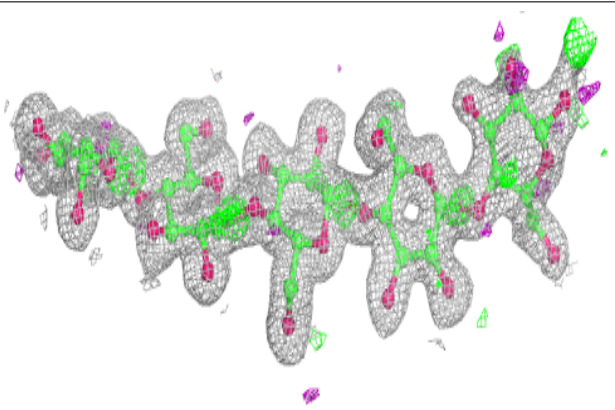
The following is a graphical depiction of the model fit to experimental electron density for oligosaccharide. Each fit is shown from different orientation to approximate a three-dimensional view.

Electron density around Chain C:

$2mF_o-DF_c$ (at 0.7 rmsd) in gray
 mF_o-DF_c (at 3 rmsd) in purple (negative)
and green (positive)

**Electron density around Chain D:**

$2mF_o-DF_c$ (at 0.7 rmsd) in gray
 mF_o-DF_c (at 3 rmsd) in purple (negative)
and green (positive)



6.4 Ligands

There are no ligands in this entry.

6.5 Other polymers

There are no such residues in this entry.