



Full wwPDB X-ray Structure Validation Report ⓘ

Jan 18, 2024 – 02:48 AM EST

PDB ID : 7GTI
Title : PanDDA Analysis group deposition – Crystal structure of PTP1B in complex with FMOOA000571a
Authors : Mehlman, T.; Ginn, H.M.; Keedy, D.A.
Deposited on : 2024-01-03
Resolution : 1.66 Å(reported)

This is a Full wwPDB X-ray Structure Validation Report for a publicly released PDB entry.

We welcome your comments at validation@mail.wwpdb.org

A user guide is available at

<https://www.wwpdb.org/validation/2017/XrayValidationReportHelp>

with specific help available everywhere you see the ⓘ symbol.

The types of validation reports are described at

<http://www.wwpdb.org/validation/2017/FAQs#types>.

The following versions of software and data (see [references ⓘ](#)) were used in the production of this report:

MolProbity : 4.02b-467
Mogul : 1.8.5 (274361), CSD as541be (2020)
Xtriage (Phenix) : 1.13
EDS : 2.36
buster-report : 1.1.7 (2018)
Percentile statistics : 20191225.v01 (using entries in the PDB archive December 25th 2019)
Refmac : 5.8.0158
CCP4 : 7.0.044 (Gargrove)
Ideal geometry (proteins) : Engh & Huber (2001)
Ideal geometry (DNA, RNA) : Parkinson et al. (1996)
Validation Pipeline (wwPDB-VP) : 2.36

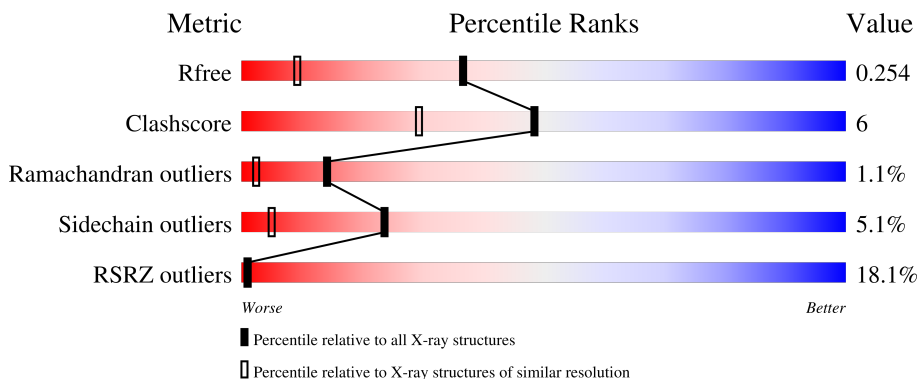
1 Overall quality at a glance

The following experimental techniques were used to determine the structure:

X-RAY DIFFRACTION

The reported resolution of this entry is 1.66 Å.

Percentile scores (ranging between 0-100) for global validation metrics of the entry are shown in the following graphic. The table shows the number of entries on which the scores are based.



Metric	Whole archive (#Entries)	Similar resolution (#Entries, resolution range(Å))
R_{free}	130704	1827 (1.66-1.66)
Clashscore	141614	1931 (1.66-1.66)
Ramachandran outliers	138981	1891 (1.66-1.66)
Sidechain outliers	138945	1891 (1.66-1.66)
RSRZ outliers	127900	1791 (1.66-1.66)

The table below summarises the geometric issues observed across the polymeric chains and their fit to the electron density. The red, orange, yellow and green segments of the lower bar indicate the fraction of residues that contain outliers for ≥ 3 , 2, 1 and 0 types of geometric quality criteria respectively. A grey segment represents the fraction of residues that are not modelled. The numeric value for each fraction is indicated below the corresponding segment, with a dot representing fractions $\leq 5\%$. The upper red bar (where present) indicates the fraction of residues that have poor fit to the electron density. The numeric value is given above the bar.

Mol	Chain	Length	Quality of chain
1	A	321	

The following table lists non-polymeric compounds, carbohydrate monomers and non-standard residues in protein, DNA, RNA chains that are outliers for geometric or electron-density-fit criteria:

Mol	Type	Chain	Res	Chirality	Geometry	Clashes	Electron density
3	A1ABY	A	402	-	-	-	X

2 Entry composition [i](#)

There are 4 unique types of molecules in this entry. The entry contains 4907 atoms, of which 2329 are hydrogens and 0 are deuteriums.

In the tables below, the ZeroOcc column contains the number of atoms modelled with zero occupancy, the AltConf column contains the number of residues with at least one atom in alternate conformation and the Trace column contains the number of residues modelled with at most 2 atoms.

- Molecule 1 is a protein called Tyrosine-protein phosphatase non-receptor type 1.

Mol	Chain	Residues	Atoms					ZeroOcc	AltConf	Trace	
			Total	C	H	N	O				S
1	A	282	4602	1465	2297	397	428	15	0	0	0

There are 2 discrepancies between the modelled and reference sequences:

Chain	Residue	Modelled	Actual	Comment	Reference
A	32	SER	CYS	engineered mutation	UNP P18031
A	92	VAL	CYS	engineered mutation	UNP P18031

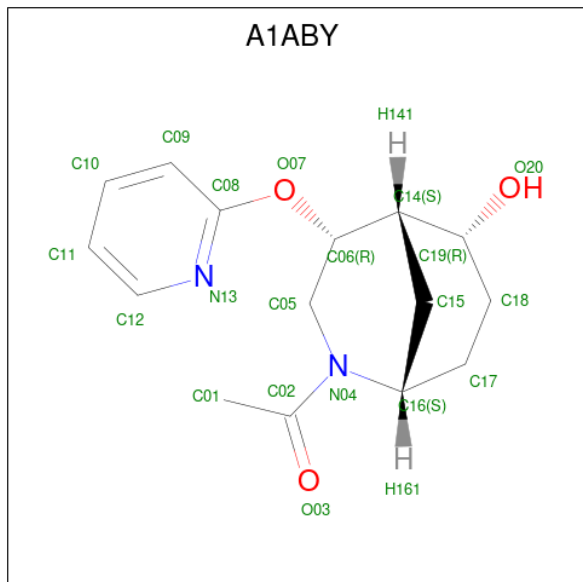
- Molecule 2 is 2-AMINO-2-HYDROXYMETHYL-PROPANE-1,3-DIOL (three-letter code: TRS) (formula: $C_4H_{12}NO_3$).



Mol	Chain	Residues	Atoms					ZeroOcc	AltConf
			Total	C	H	N	O		
2	A	1	20	4	12	1	3	0	0

- Molecule 3 is 1-{(1S,4R,5S,6R)-6-hydroxy-4-[(pyridin-2-yl)oxy]-2-azabicyclo[3.3.1]nonan-2

-yl}ethan-1-one (three-letter code: A1ABY) (formula: C₁₅H₂₀N₂O₃) (labeled as "Ligand of Interest" by depositor).



Mol	Chain	Residues	Atoms					ZeroOcc	AltConf
			Total	C	H	N	O		
3	A	1	40	15	20	2	3	0	0

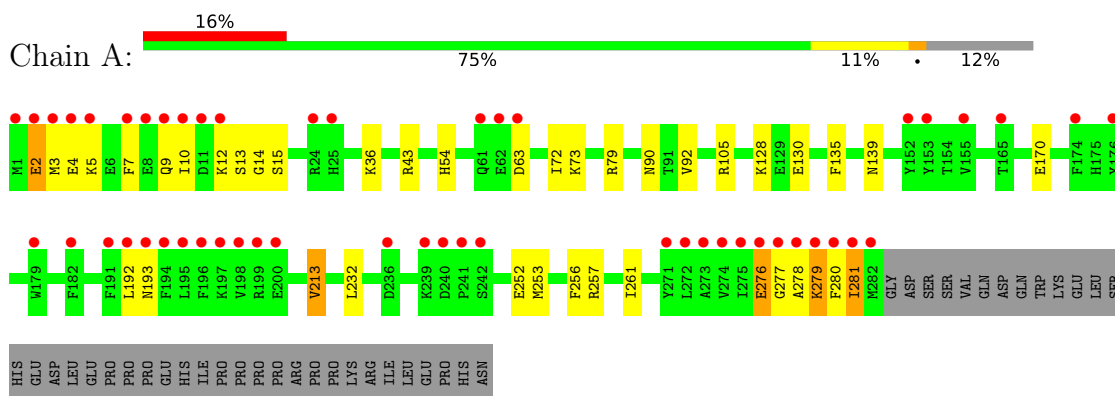
- Molecule 4 is water.

Mol	Chain	Residues	Atoms		ZeroOcc	AltConf
4	A	241	Total	O	0	6
			245	245		

3 Residue-property plots [i](#)

These plots are drawn for all protein, RNA, DNA and oligosaccharide chains in the entry. The first graphic for a chain summarises the proportions of the various outlier classes displayed in the second graphic. The second graphic shows the sequence view annotated by issues in geometry and electron density. Residues are color-coded according to the number of geometric quality criteria for which they contain at least one outlier: green = 0, yellow = 1, orange = 2 and red = 3 or more. A red dot above a residue indicates a poor fit to the electron density ($RSRZ > 2$). Stretches of 2 or more consecutive residues without any outlier are shown as a green connector. Residues present in the sample, but not in the model, are shown in grey.

- Molecule 1: Tyrosine-protein phosphatase non-receptor type 1



4 Data and refinement statistics

Property	Value	Source
Space group	P 31 2 1	Depositor
Cell constants a, b, c, α , β , γ	90.17Å 90.17Å 106.88Å 90.00° 90.00° 120.00°	Depositor
Resolution (Å)	45.09 – 1.66 45.09 – 1.66	Depositor EDS
% Data completeness (in resolution range)	99.9 (45.09-1.66) 99.9 (45.09-1.66)	Depositor EDS
R_{merge}	0.06	Depositor
R_{sym}	(Not available)	Depositor
$\langle I/\sigma(I) \rangle$ ¹	1.26 (at 1.65Å)	Xtrriage
Refinement program	REFMAC 5.8.0267	Depositor
R, R_{free}	0.202 , 0.234 0.233 , 0.254	Depositor DCC
R_{free} test set	2372 reflections (3.94%)	wwPDB-VP
Wilson B-factor (Å ²)	29.8	Xtrriage
Anisotropy	0.014	Xtrriage
Bulk solvent k_{sol} (e/Å ³), B_{sol} (Å ²)	0.37 , 56.6	EDS
L-test for twinning ²	$\langle L \rangle = 0.49$, $\langle L^2 \rangle = 0.32$	Xtrriage
Estimated twinning fraction	0.026 for -h,-k,l	Xtrriage
F_o, F_c correlation	0.94	EDS
Total number of atoms	4907	wwPDB-VP
Average B, all atoms (Å ²)	36.0	wwPDB-VP

Xtrriage's analysis on translational NCS is as follows: *The largest off-origin peak in the Patterson function is 4.22% of the height of the origin peak. No significant pseudotranslation is detected.*

¹Intensities estimated from amplitudes.

²Theoretical values of $\langle |L| \rangle$, $\langle L^2 \rangle$ for acentric reflections are 0.5, 0.333 respectively for untwinned datasets, and 0.375, 0.2 for perfectly twinned datasets.

5 Model quality [i](#)

5.1 Standard geometry [i](#)

Bond lengths and bond angles in the following residue types are not validated in this section: A1ABY, TRS

The Z score for a bond length (or angle) is the number of standard deviations the observed value is removed from the expected value. A bond length (or angle) with $|Z| > 5$ is considered an outlier worth inspection. RMSZ is the root-mean-square of all Z scores of the bond lengths (or angles).

Mol	Chain	Bond lengths		Bond angles	
		RMSZ	# Z >5	RMSZ	# Z >5
1	A	0.92	1/2357 (0.0%)	0.93	6/3176 (0.2%)

All (1) bond length outliers are listed below:

Mol	Chain	Res	Type	Atoms	Z	Observed(Å)	Ideal(Å)
1	A	252	GLU	CD-OE2	-7.29	1.17	1.25

All (6) bond angle outliers are listed below:

Mol	Chain	Res	Type	Atoms	Z	Observed(°)	Ideal(°)
1	A	257	ARG	NE-CZ-NH1	7.91	124.25	120.30
1	A	213	VAL	CA-CB-CG2	6.50	120.65	110.90
1	A	213	VAL	CA-CB-CG1	6.16	120.13	110.90
1	A	43	ARG	NE-CZ-NH1	5.51	123.05	120.30
1	A	79	ARG	NE-CZ-NH1	5.43	123.02	120.30
1	A	213	VAL	CG1-CB-CG2	5.20	119.22	110.90

There are no chirality outliers.

There are no planarity outliers.

5.2 Too-close contacts [i](#)

In the following table, the Non-H and H(model) columns list the number of non-hydrogen atoms and hydrogen atoms in the chain respectively. The H(added) column lists the number of hydrogen atoms added and optimized by MolProbity. The Clashes column lists the number of clashes within the asymmetric unit, whereas Symm-Clashes lists symmetry-related clashes.

Mol	Chain	Non-H	H(model)	H(added)	Clashes	Symm-Clashes
1	A	2305	2297	2289	28	2

Continued on next page...

Continued from previous page...

Mol	Chain	Non-H	H(model)	H(added)	Clashes	Symm-Clashes
2	A	8	12	12	1	2
3	A	20	20	0	3	0
4	A	245	0	0	11	0
All	All	2578	2329	2301	28	2

The all-atom clashscore is defined as the number of clashes found per 1000 atoms (including hydrogen atoms). The all-atom clashscore for this structure is 6.

All (28) close contacts within the same asymmetric unit are listed below, sorted by their clash magnitude.

Atom-1	Atom-2	Interatomic distance (Å)	Clash overlap (Å)
1:A:90:ASN:OD1	4:A:502[B]:HOH:O	1.60	1.16
1:A:128:LYS:NZ	4:A:503:HOH:O	1.97	0.97
1:A:36:LYS:HD2	4:A:509:HOH:O	1.75	0.87
1:A:278:ALA:HA	1:A:281:ILE:HG22	1.58	0.85
1:A:73:LYS:HE2	4:A:504:HOH:O	1.77	0.84
1:A:73:LYS:CE	4:A:504:HOH:O	2.26	0.82
1:A:73:LYS:NZ	4:A:504:HOH:O	2.14	0.80
1:A:280:PHE:HB3	3:A:402:A1ABY:C17	2.15	0.77
1:A:232:LEU:HD22	1:A:281:ILE:HG21	1.76	0.67
1:A:277:GLY:O	1:A:281:ILE:HB	1.95	0.66
1:A:92:VAL:HG12	1:A:135:PHE:CE1	2.31	0.66
1:A:36:LYS:CD	4:A:509:HOH:O	2.39	0.64
1:A:73:LYS:HE3	4:A:513:HOH:O	1.97	0.63
1:A:9:GLN:O	1:A:13:SER:OG	2.08	0.63
1:A:276:GLU:OE2	1:A:279:LYS:HD3	1.99	0.61
1:A:278:ALA:HA	1:A:281:ILE:O	2.05	0.57
1:A:277:GLY:HA2	3:A:402:A1ABY:C15	2.35	0.56
1:A:170:GLU:OE1	4:A:505:HOH:O	2.18	0.53
1:A:280:PHE:CD1	1:A:280:PHE:O	2.63	0.52
1:A:105:ARG:HG2	1:A:105:ARG:HH11	1.76	0.51
1:A:2:GLU:HB3	1:A:5:LYS:HE2	1.93	0.49
1:A:92:VAL:CG1	1:A:135:PHE:CE1	2.95	0.49
1:A:36:LYS:NZ	4:A:509:HOH:O	2.46	0.49
1:A:72:ILE:HD12	1:A:256:PHE:HB2	1.96	0.46
1:A:73:LYS:CE	4:A:513:HOH:O	2.61	0.45
1:A:10:ILE:O	1:A:14:GLY:N	2.52	0.42
1:A:280:PHE:HB3	3:A:402:A1ABY:C18	2.49	0.41
1:A:54:HIS:ND1	2:A:401:TRS:H11	2.36	0.41

All (2) symmetry-related close contacts are listed below. The label for Atom-2 includes the sym-

metry operator and encoded unit-cell translations to be applied.

Atom-1	Atom-2	Interatomic distance (Å)	Clash overlap (Å)
1:A:130:GLU:OE2	2:A:401:TRS:O2[4_565]	1.66	0.54
1:A:130:GLU:OE2	2:A:401:TRS:HO2[4_565]	1.31	0.29

5.3 Torsion angles [\(i\)](#)

5.3.1 Protein backbone [\(i\)](#)

In the following table, the Percentiles column shows the percent Ramachandran outliers of the chain as a percentile score with respect to all X-ray entries followed by that with respect to entries of similar resolution.

The Analysed column shows the number of residues for which the backbone conformation was analysed, and the total number of residues.

Mol	Chain	Analysed	Favoured	Allowed	Outliers	Percentiles
1	A	280/321 (87%)	271 (97%)	6 (2%)	3 (1%)	14 2

All (3) Ramachandran outliers are listed below:

Mol	Chain	Res	Type
1	A	63	ASP
1	A	3	MET
1	A	261	ILE

5.3.2 Protein sidechains [\(i\)](#)

In the following table, the Percentiles column shows the percent sidechain outliers of the chain as a percentile score with respect to all X-ray entries followed by that with respect to entries of similar resolution.

The Analysed column shows the number of residues for which the sidechain conformation was analysed, and the total number of residues.

Mol	Chain	Analysed	Rotameric	Outliers	Percentiles
1	A	256/294 (87%)	243 (95%)	13 (5%)	24 5

All (13) residues with a non-rotameric sidechain are listed below:

Mol	Chain	Res	Type
1	A	2	GLU
1	A	4	GLU
1	A	7	PHE
1	A	12	LYS
1	A	15	SER
1	A	139	ASN
1	A	192	LEU
1	A	193	ASN
1	A	213	VAL
1	A	253	MET
1	A	276	GLU
1	A	279	LYS
1	A	281	ILE

Sometimes sidechains can be flipped to improve hydrogen bonding and reduce clashes. All (1) such sidechains are listed below:

Mol	Chain	Res	Type
1	A	139	ASN

5.3.3 RNA [i](#)

There are no RNA molecules in this entry.

5.4 Non-standard residues in protein, DNA, RNA chains [i](#)

There are no non-standard protein/DNA/RNA residues in this entry.

5.5 Carbohydrates [i](#)

There are no monosaccharides in this entry.

5.6 Ligand geometry [i](#)

2 ligands are modelled in this entry.

In the following table, the Counts columns list the number of bonds (or angles) for which Mogul statistics could be retrieved, the number of bonds (or angles) that are observed in the model and the number of bonds (or angles) that are defined in the Chemical Component Dictionary. The Link column lists molecule types, if any, to which the group is linked. The Z score for a bond length (or angle) is the number of standard deviations the observed value is removed from the

expected value. A bond length (or angle) with $|Z| > 2$ is considered an outlier worth inspection. RMSZ is the root-mean-square of all Z scores of the bond lengths (or angles).

Mol	Type	Chain	Res	Link	Bond lengths			Bond angles		
					Counts	RMSZ	# Z > 2	Counts	RMSZ	# Z > 2
3	A1ABY	A	402	-	22,22,22	1.87	6 (27%)	22,31,31	2.57	8 (36%)
2	TRS	A	401	-	7,7,7	0.99	1 (14%)	9,9,9	1.00	0

In the following table, the Chirals column lists the number of chiral outliers, the number of chiral centers analysed, the number of these observed in the model and the number defined in the Chemical Component Dictionary. Similar counts are reported in the Torsion and Rings columns. '-' means no outliers of that kind were identified.

Mol	Type	Chain	Res	Link	Chirals	Torsions	Rings
3	A1ABY	A	402	-	-	2/8/33/33	0/4/3/3
2	TRS	A	401	-	-	6/9/9/9	-

All (7) bond length outliers are listed below:

Mol	Chain	Res	Type	Atoms	Z	Observed(Å)	Ideal(Å)
3	A	402	A1ABY	C08-N13	4.17	1.39	1.32
3	A	402	A1ABY	C05-N04	4.08	1.52	1.46
3	A	402	A1ABY	C02-N04	3.52	1.40	1.35
3	A	402	A1ABY	C05-C06	2.53	1.58	1.51
3	A	402	A1ABY	C14-C06	2.46	1.57	1.52
3	A	402	A1ABY	C15-C14	-2.18	1.50	1.53
2	A	401	TRS	O3-C3	2.14	1.49	1.42

All (8) bond angle outliers are listed below:

Mol	Chain	Res	Type	Atoms	Z	Observed(°)	Ideal(°)
3	A	402	A1ABY	O07-C08-C09	6.09	123.46	115.89
3	A	402	A1ABY	C01-C02-N04	4.87	122.97	117.87
3	A	402	A1ABY	C17-C18-C19	3.58	117.00	111.76
3	A	402	A1ABY	C06-C05-N04	3.57	115.91	108.46
3	A	402	A1ABY	O07-C06-C14	3.38	113.23	107.54
3	A	402	A1ABY	C18-C17-C16	3.33	116.71	109.81
3	A	402	A1ABY	C09-C08-N13	-3.20	120.10	124.87
3	A	402	A1ABY	O07-C06-C05	2.98	114.62	108.75

There are no chirality outliers.

All (8) torsion outliers are listed below:

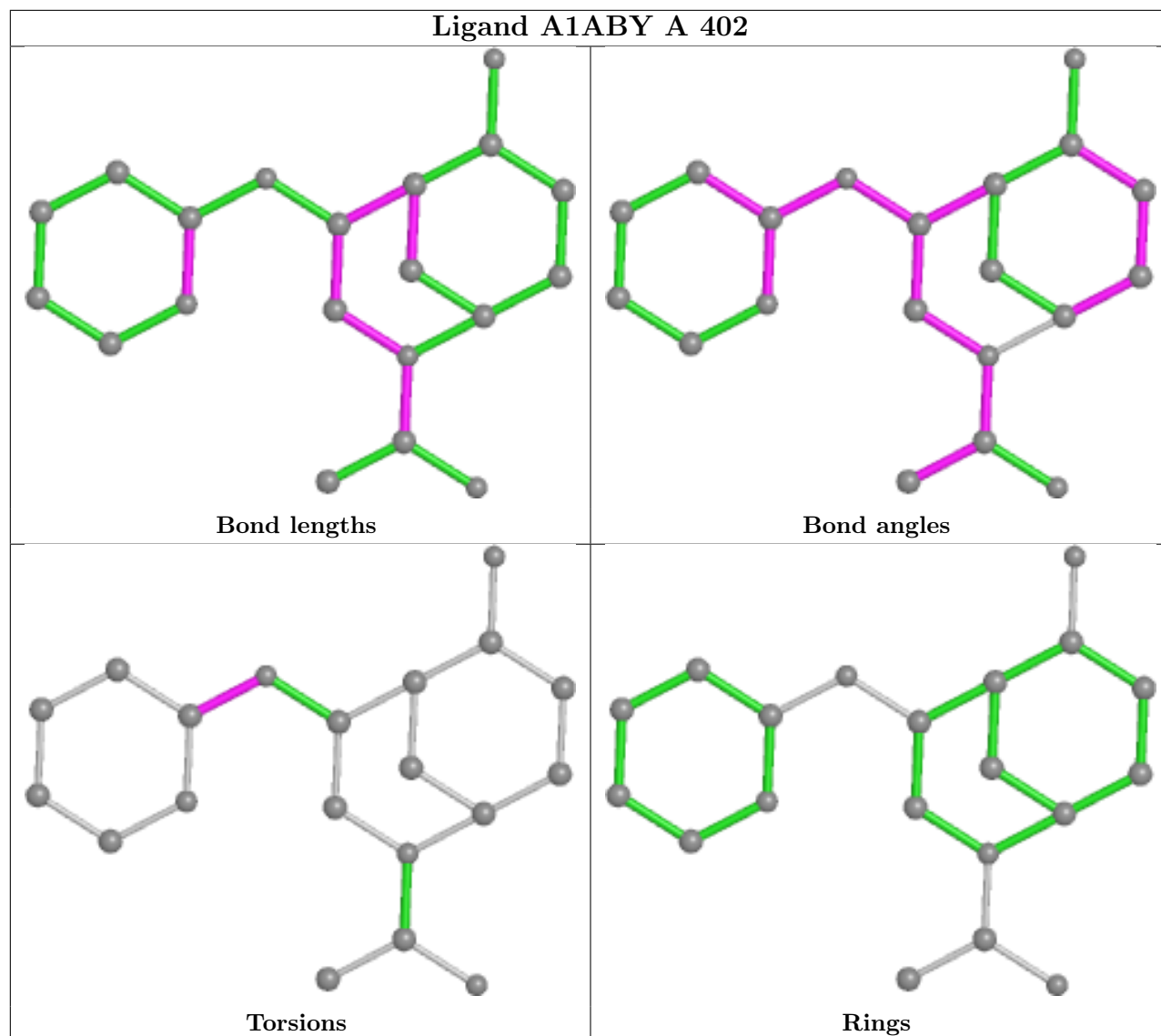
Mol	Chain	Res	Type	Atoms
2	A	401	TRS	C1-C-C2-O2
2	A	401	TRS	N-C-C2-O2
3	A	402	A1ABY	C09-C08-O07-C06
2	A	401	TRS	C3-C-C1-O1
2	A	401	TRS	N-C-C1-O1
2	A	401	TRS	C3-C-C2-O2
3	A	402	A1ABY	N13-C08-O07-C06
2	A	401	TRS	C2-C-C1-O1

There are no ring outliers.

2 monomers are involved in 6 short contacts:

Mol	Chain	Res	Type	Clashes	Symm-Clashes
3	A	402	A1ABY	3	0
2	A	401	TRS	1	2

The following is a two-dimensional graphical depiction of Mogul quality analysis of bond lengths, bond angles, torsion angles, and ring geometry for all instances of the Ligand of Interest. In addition, ligands with molecular weight > 250 and outliers as shown on the validation Tables will also be included. For torsion angles, if less than 5% of the Mogul distribution of torsion angles is within 10 degrees of the torsion angle in question, then that torsion angle is considered an outlier. Any bond that is central to one or more torsion angles identified as an outlier by Mogul will be highlighted in the graph. For rings, the root-mean-square deviation (RMSD) between the ring in question and similar rings identified by Mogul is calculated over all ring torsion angles. If the average RMSD is greater than 60 degrees and the minimal RMSD between the ring in question and any Mogul-identified rings is also greater than 60 degrees, then that ring is considered an outlier. The outliers are highlighted in purple. The color gray indicates Mogul did not find sufficient equivalents in the CSD to analyse the geometry.



5.7 Other polymers [i](#)

There are no such residues in this entry.

5.8 Polymer linkage issues [i](#)

There are no chain breaks in this entry.

6 Fit of model and data

6.1 Protein, DNA and RNA chains

In the following table, the column labelled ‘#RSRZ> 2’ contains the number (and percentage) of RSRZ outliers, followed by percent RSRZ outliers for the chain as percentile scores relative to all X-ray entries and entries of similar resolution. The OWAB column contains the minimum, median, 95th percentile and maximum values of the occupancy-weighted average B-factor per residue. The column labelled ‘Q< 0.9’ lists the number of (and percentage) of residues with an average occupancy less than 0.9.

Mol	Chain	Analysed	<RSRZ>	#RSRZ>2	OWAB(Å ²)	Q<0.9
1	A	282/321 (87%)	1.08	51 (18%) 1 1	20, 31, 62, 92	46 (16%)

All (51) RSRZ outliers are listed below:

Mol	Chain	Res	Type	RSRZ
1	A	281	ILE	31.9
1	A	280	PHE	14.3
1	A	194	PHE	11.6
1	A	196	PHE	11.3
1	A	198	VAL	11.2
1	A	174	PHE	10.6
1	A	195	LEU	10.5
1	A	282	MET	10.1
1	A	192	LEU	10.0
1	A	274	VAL	9.6
1	A	1	MET	9.5
1	A	278	ALA	8.7
1	A	176	TYR	8.6
1	A	277	GLY	8.6
1	A	155	VAL	8.4
1	A	275	ILE	8.3
1	A	179	TRP	7.9
1	A	273	ALA	7.8
1	A	153	TYR	7.7
1	A	191	PHE	7.5
1	A	271	TYR	7.4
1	A	272	LEU	7.3
1	A	279	LYS	7.1
1	A	152	TYR	6.7
1	A	199	ARG	6.4
1	A	241	PRO	6.4
1	A	182	PHE	6.2

Continued on next page...

Continued from previous page...

Mol	Chain	Res	Type	RSRZ
1	A	7	PHE	5.7
1	A	193	ASN	5.7
1	A	236	ASP	5.3
1	A	242	SER	5.1
1	A	276	GLU	5.1
1	A	197	LYS	5.1
1	A	3	MET	5.0
1	A	240	ASP	4.5
1	A	63	ASP	4.2
1	A	200	GLU	3.9
1	A	11	ASP	3.8
1	A	10	ILE	3.6
1	A	239	LYS	3.5
1	A	62	GLU	3.2
1	A	5	LYS	3.1
1	A	9	GLN	2.9
1	A	165	THR	2.9
1	A	61	GLN	2.8
1	A	12	LYS	2.7
1	A	25	HIS	2.7
1	A	2	GLU	2.7
1	A	8	GLU	2.5
1	A	4	GLU	2.2
1	A	24	ARG	2.1

6.2 Non-standard residues in protein, DNA, RNA chains [i](#)

There are no non-standard protein/DNA/RNA residues in this entry.

6.3 Carbohydrates [i](#)

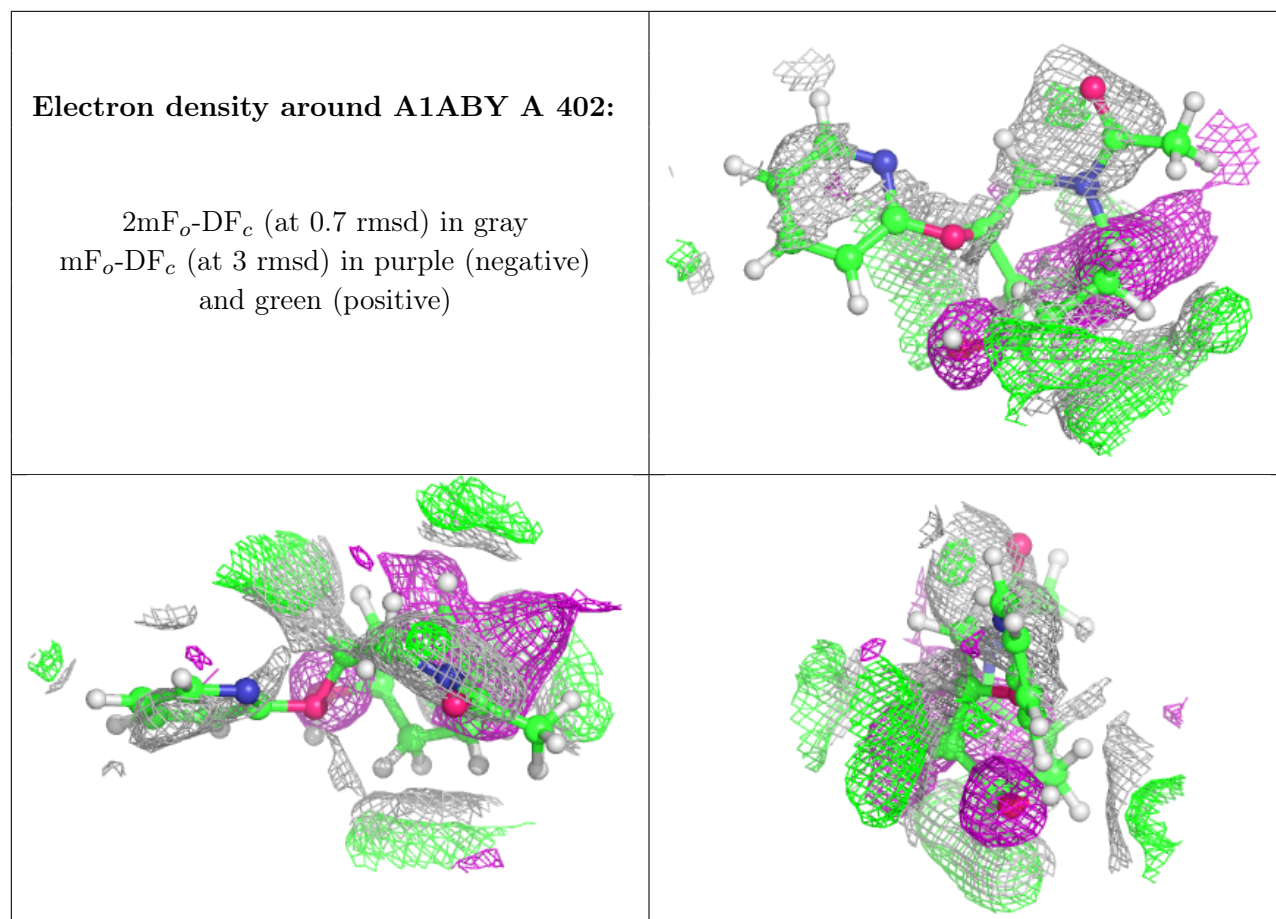
There are no monosaccharides in this entry.

6.4 Ligands [i](#)

In the following table, the Atoms column lists the number of modelled atoms in the group and the number defined in the chemical component dictionary. The B-factors column lists the minimum, median, 95th percentile and maximum values of B factors of atoms in the group. The column labelled 'Q< 0.9' lists the number of atoms with occupancy less than 0.9.

Mol	Type	Chain	Res	Atoms	RSCC	RSR	B-factors(\AA^2)	Q<0.9
3	A1ABY	A	402	20/20	0.42	0.76	30,52,59,60	40
2	TRS	A	401	8/8	0.75	0.24	22,43,57,67	0

The following is a graphical depiction of the model fit to experimental electron density of all instances of the Ligand of Interest. In addition, ligands with molecular weight > 250 and outliers as shown on the geometry validation Tables will also be included. Each fit is shown from different orientation to approximate a three-dimensional view.



6.5 Other polymers [\(i\)](#)

There are no such residues in this entry.