



# Full wwPDB X-ray Structure Validation Report ⓘ

Mar 8, 2023 – 01:21 AM EST

PDB ID : 1GLI  
Title : DEOXYHEMOGLOBIN T38W (ALPHA CHAINS), V1G (ALPHA AND BETA CHAINS)  
Authors : Fermi, G.; Vallone, B.  
Deposited on : 1996-02-22  
Resolution : 2.50 Å(reported)

This is a Full wwPDB X-ray Structure Validation Report for a publicly released PDB entry.

We welcome your comments at [validation@mail.wwpdb.org](mailto:validation@mail.wwpdb.org)

A user guide is available at

<https://www.wwpdb.org/validation/2017/XrayValidationReportHelp>

with specific help available everywhere you see the ⓘ symbol.

The types of validation reports are described at

<http://www.wwpdb.org/validation/2017/FAQs#types>.

---

The following versions of software and data (see [references ⓘ](#)) were used in the production of this report:

MolProbity : 4.02b-467  
Mogul : 1.8.5 (274361), CSD as541be (2020)  
Xtrriage (Phenix) : 1.13  
EDS : 2.32.1  
buster-report : 1.1.7 (2018)  
Percentile statistics : 20191225.v01 (using entries in the PDB archive December 25th 2019)  
Refmac : 5.8.0158  
CCP4 : 7.0.044 (Gargrove)  
Ideal geometry (proteins) : Engh & Huber (2001)  
Ideal geometry (DNA, RNA) : Parkinson et al. (1996)  
Validation Pipeline (wwPDB-VP) : 2.32.1

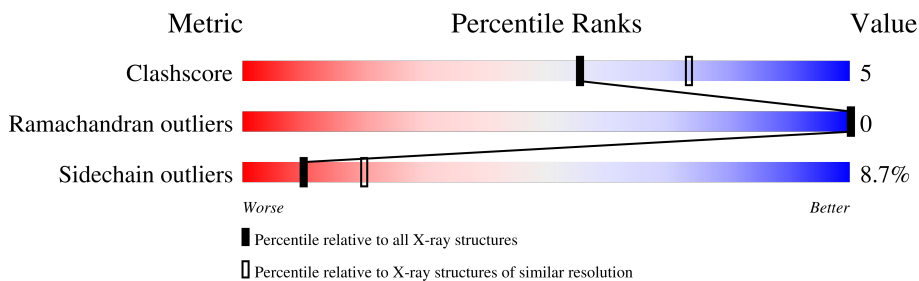
# 1 Overall quality at a glance

The following experimental techniques were used to determine the structure:

*X-RAY DIFFRACTION*

The reported resolution of this entry is 2.50 Å.

Percentile scores (ranging between 0-100) for global validation metrics of the entry are shown in the following graphic. The table shows the number of entries on which the scores are based.



Metric	Whole archive (#Entries)	Similar resolution (#Entries, resolution range(Å))
Clashscore	141614	5346 (2.50-2.50)
Ramachandran outliers	138981	5231 (2.50-2.50)
Sidechain outliers	138945	5233 (2.50-2.50)

The table below summarises the geometric issues observed across the polymeric chains and their fit to the electron density. The red, orange, yellow and green segments of the lower bar indicate the fraction of residues that contain outliers for  $\geq 3$ , 2, 1 and 0 types of geometric quality criteria respectively. A grey segment represents the fraction of residues that are not modelled. The numeric value for each fraction is indicated below the corresponding segment, with a dot representing fractions  $\leq 5\%$ .

Mol	Chain	Length	Quality of chain
1	A	141	
1	C	141	
2	B	146	
2	D	146	

## 2 Entry composition [i](#)

There are 5 unique types of molecules in this entry. The entry contains 4685 atoms, of which 0 are hydrogens and 0 are deuteriums.

In the tables below, the ZeroOcc column contains the number of atoms modelled with zero occupancy, the AltConf column contains the number of residues with at least one atom in alternate conformation and the Trace column contains the number of residues modelled with at most 2 atoms.

- Molecule 1 is a protein called DEOXYHEMOGLOBIN.

Mol	Chain	Residues	Atoms					ZeroOcc	AltConf	Trace
			Total	C	N	O	S			
1	A	141	1077	692	188	193	4	0	0	0
1	C	141	1077	692	188	193	4	0	0	0

There are 2 discrepancies between the modelled and reference sequences:

Chain	Residue	Modelled	Actual	Comment	Reference
A	38	TRP	THR	engineered mutation	UNP P69905
C	38	TRP	THR	engineered mutation	UNP P69905

- Molecule 2 is a protein called DEOXYHEMOGLOBIN.

Mol	Chain	Residues	Atoms					ZeroOcc	AltConf	Trace
			Total	C	N	O	S			
2	B	146	1124	724	195	201	4	0	0	0
2	D	146	1124	724	195	201	4	0	0	0

- Molecule 3 is PROTOPORPHYRIN IX CONTAINING FE (three-letter code: HEM) (formula:  $C_{34}H_{32}FeN_4O_4$ ).



Mol	Chain	Residues	Atoms	ZeroOcc	AltConf
4	B	1	Total P 1 1	0	0


- Molecule 5 is water.

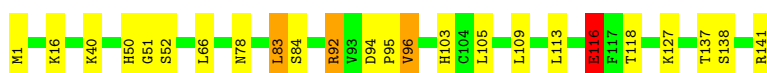
Mol	Chain	Residues	Atoms	ZeroOcc	AltConf
5	A	29	Total O 29 29	0	0
5	B	26	Total O 26 26	0	0
5	C	29	Total O 29 29	0	0
5	D	26	Total O 26 26	0	0

### 3 Residue-property plots [i](#)


These plots are drawn for all protein, RNA, DNA and oligosaccharide chains in the entry. The first graphic for a chain summarises the proportions of the various outlier classes displayed in the second graphic. The second graphic shows the sequence view annotated by issues in geometry. Residues are color-coded according to the number of geometric quality criteria for which they contain at least one outlier: green = 0, yellow = 1, orange = 2 and red = 3 or more. Stretches of 2 or more consecutive residues without any outlier are shown as a green connector. Residues present in the sample, but not in the model, are shown in grey.

- Molecule 1: DEOXYHEMOGLOBIN

Chain A:  83% 14% ..




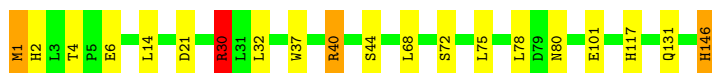
- Molecule 1: DEOXYHEMOGLOBIN

Chain C:  82% 14% ..




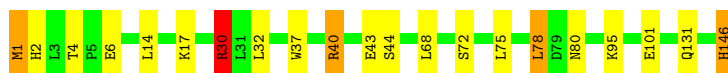
- Molecule 2: DEOXYHEMOGLOBIN

Chain B:  86% 11% ..



- Molecule 2: DEOXYHEMOGLOBIN

Chain D:  86% 11% ..



## 4 Data and refinement statistics

Property	Value	Source
Space group	P 1 21 1	Depositor
Cell constants a, b, c, $\alpha$ , $\beta$ , $\gamma$	63.15Å 83.59Å 53.80Å 90.00° 99.34° 90.00°	Depositor
Resolution (Å)	(Not available) – 2.50 19.81 – 2.50	Depositor EDS
% Data completeness (in resolution range)	(Not available) ((Not available)-2.50) 80.1 (19.81-2.50)	Depositor EDS
$R_{merge}$	0.10	Depositor
$R_{sym}$	(Not available)	Depositor
$\langle I/\sigma(I) \rangle$ <sup>1</sup>	3.39 (at 2.50Å)	Xtrriage
Refinement program		Depositor
R, $R_{free}$	(Not available) , (Not available) 0.246 , (Not available)	Depositor DCC
$R_{free}$ test set	No test flags present.	wwPDB-VP
Wilson B-factor (Å <sup>2</sup> )	19.1	Xtrriage
Anisotropy	0.205	Xtrriage
Bulk solvent $k_{sol}$ (e/Å <sup>3</sup> ), $B_{sol}$ (Å <sup>2</sup> )	0.29 , 31.7	EDS
L-test for twinning <sup>2</sup>	$\langle  L  \rangle = 0.49$ , $\langle L^2 \rangle = 0.32$	Xtrriage
Estimated twinning fraction	No twinning to report.	Xtrriage
$F_o, F_c$ correlation	0.88	EDS
Total number of atoms	4685	wwPDB-VP
Average B, all atoms (Å <sup>2</sup> )	24.0	wwPDB-VP

Xtrriage's analysis on translational NCS is as follows: *The largest off-origin peak in the Patterson function is 6.40% of the height of the origin peak. No significant pseudotranslation is detected.*

<sup>1</sup>Intensities estimated from amplitudes.

<sup>2</sup>Theoretical values of  $\langle |L| \rangle$ ,  $\langle L^2 \rangle$  for acentric reflections are 0.5, 0.333 respectively for untwinned datasets, and 0.375, 0.2 for perfectly twinned datasets.

## 5 Model quality [i](#)

### 5.1 Standard geometry [i](#)

Bond lengths and bond angles in the following residue types are not validated in this section: PO4, HEM

The Z score for a bond length (or angle) is the number of standard deviations the observed value is removed from the expected value. A bond length (or angle) with  $|Z| > 5$  is considered an outlier worth inspection. RMSZ is the root-mean-square of all Z scores of the bond lengths (or angles).

Mol	Chain	Bond lengths		Bond angles	
		RMSZ	# Z  >5	RMSZ	# Z  >5
1	A	0.84	2/1107 (0.2%)	0.98	4/1504 (0.3%)
1	C	0.84	2/1107 (0.2%)	0.98	4/1504 (0.3%)
2	B	0.74	0/1154	1.16	4/1566 (0.3%)
2	D	0.74	0/1154	1.16	4/1566 (0.3%)
All	All	0.79	4/4522 (0.1%)	1.07	16/6140 (0.3%)

Chiral center outliers are detected by calculating the chiral volume of a chiral center and verifying if the center is modelled as a planar moiety or with the opposite hand. A planarity outlier is detected by checking planarity of atoms in a peptide group, atoms in a mainchain group or atoms of a sidechain that are expected to be planar.

Mol	Chain	#Chirality outliers	#Planarity outliers
1	A	0	1
1	C	0	1
2	B	0	1
2	D	0	1
All	All	0	4

All (4) bond length outliers are listed below:

Mol	Chain	Res	Type	Atoms	Z	Observed(Å)	Ideal(Å)
1	C	116	GLU	CD-OE1	-5.96	1.19	1.25
1	A	116	GLU	CD-OE1	-5.92	1.19	1.25
1	C	137	THR	CB-OG1	5.17	1.53	1.43
1	A	137	THR	CB-OG1	5.17	1.53	1.43

All (16) bond angle outliers are listed below:

Mol	Chain	Res	Type	Atoms	Z	Observed(°)	Ideal(°)
2	D	30	ARG	NE-CZ-NH2	-20.46	110.07	120.30

*Continued on next page...*



Continued from previous page...

Mol	Chain	Res	Type	Atoms	Z	Observed(°)	Ideal(°)
2	B	30	ARG	NE-CZ-NH2	-20.41	110.10	120.30
2	B	30	ARG	CD-NE-CZ	12.79	141.50	123.60
2	D	30	ARG	CD-NE-CZ	12.75	141.45	123.60
2	D	30	ARG	NE-CZ-NH1	9.20	124.90	120.30
2	B	30	ARG	NE-CZ-NH1	9.16	124.88	120.30
2	D	1	MET	CG-SD-CE	7.49	112.19	100.20
2	B	1	MET	CG-SD-CE	7.46	112.14	100.20
1	A	116	GLU	CA-CB-CG	6.83	128.42	113.40
1	C	116	GLU	CA-CB-CG	6.80	128.36	113.40
1	C	92	ARG	CD-NE-CZ	-6.71	114.20	123.60
1	A	92	ARG	CD-NE-CZ	-6.70	114.23	123.60
1	C	1	MET	CG-SD-CE	6.13	110.00	100.20
1	A	1	MET	CG-SD-CE	6.10	109.97	100.20
1	C	116	GLU	CG-CD-OE1	-5.34	107.61	118.30
1	A	116	GLU	CG-CD-OE1	-5.32	107.66	118.30

There are no chirality outliers.

All (4) planarity outliers are listed below:

Mol	Chain	Res	Type	Group
1	A	116	GLU	Sidechain
2	B	30	ARG	Sidechain
1	C	116	GLU	Sidechain
2	D	30	ARG	Sidechain

## 5.2 Too-close contacts [i](#)

In the following table, the Non-H and H(model) columns list the number of non-hydrogen atoms and hydrogen atoms in the chain respectively. The H(added) column lists the number of hydrogen atoms added and optimized by MolProbity. The Clashes column lists the number of clashes within the asymmetric unit, whereas Symm-Clashes lists symmetry-related clashes.

Mol	Chain	Non-H	H(model)	H(added)	Clashes	Symm-Clashes
1	A	1077	0	1076	15	0
1	C	1077	0	1076	15	3
2	B	1124	0	1118	12	3
2	D	1124	0	1118	14	2
3	A	43	0	30	1	0
3	B	43	0	30	1	0
3	C	43	0	30	1	0
3	D	43	0	30	1	0

Continued on next page...

*Continued from previous page...*

Mol	Chain	Non-H	H(model)	H(added)	Clashes	Symm-Clashes
4	B	1	0	0	0	0
5	A	29	0	0	0	0
5	B	26	0	0	0	0
5	C	29	0	0	0	0
5	D	26	0	0	0	0
All	All	4685	0	4508	46	4

The all-atom clashscore is defined as the number of clashes found per 1000 atoms (including hydrogen atoms). The all-atom clashscore for this structure is 5.

All (46) close contacts within the same asymmetric unit are listed below, sorted by their clash magnitude.

Atom-1	Atom-2	Interatomic distance (Å)	Clash overlap (Å)
2:D:1:MET:HG3	2:D:2:HIS:H	1.17	1.03
2:B:1:MET:HG3	2:B:2:HIS:H	1.16	1.01
2:B:1:MET:CG	2:B:2:HIS:H	1.85	0.89
2:D:1:MET:CG	2:D:2:HIS:H	1.85	0.88
2:B:1:MET:HG3	2:B:2:HIS:N	1.94	0.83
2:D:1:MET:HG3	2:D:2:HIS:N	1.94	0.83
2:D:1:MET:CG	2:D:2:HIS:N	2.57	0.65
1:C:103:HIS:HE1	2:D:131:GLN:OE1	1.89	0.56
1:A:103:HIS:HE1	2:B:131:GLN:OE1	1.89	0.55
1:A:127:LYS:NZ	1:C:141:ARG:OXT	2.32	0.55
1:A:113:LEU:HB3	1:A:116:GLU:HB2	1.89	0.54
1:C:113:LEU:HB3	1:C:116:GLU:HB2	1.89	0.54
2:B:1:MET:CG	2:B:2:HIS:N	2.57	0.53
1:C:50:HIS:HD2	1:C:51:GLY:N	2.08	0.51
1:A:50:HIS:HD2	1:A:51:GLY:N	2.08	0.51
1:A:40:LYS:NZ	2:D:146:HIS:OXT	2.25	0.51
2:B:37:TRP:O	2:B:40:ARG:HB3	2.11	0.51
2:B:101:GLU:HG2	1:C:96:VAL:CG1	2.41	0.51
1:A:96:VAL:CG1	2:D:101:GLU:HG2	2.41	0.50
2:D:37:TRP:O	2:D:40:ARG:HB3	2.11	0.50
2:B:146:HIS:OXT	1:C:40:LYS:NZ	2.25	0.49
1:A:141:ARG:OXT	1:C:127:LYS:NZ	2.32	0.49
1:C:83:LEU:HD21	3:C:142:HEM:HMA1	1.95	0.48
1:A:83:LEU:HD21	3:A:142:HEM:HMA1	1.95	0.47
2:B:4:THR:HB	2:B:6:GLU:OE2	2.15	0.47
2:D:4:THR:HB	2:D:6:GLU:OE2	2.15	0.47
1:C:116:GLU:OE1	1:C:116:GLU:N	2.49	0.46
1:A:116:GLU:N	1:A:116:GLU:OE1	2.49	0.46

*Continued on next page...*

Continued from previous page...

Atom-1	Atom-2	Interatomic distance (Å)	Clash overlap (Å)
1:A:92:ARG:HD3	2:D:40:ARG:HB2	1.99	0.45
2:B:40:ARG:HB2	1:C:92:ARG:HD3	1.99	0.45
1:A:118:THR:C	2:B:30:ARG:HH12	2.22	0.43
1:C:118:THR:C	2:D:30:ARG:HH12	2.22	0.42
1:A:50:HIS:C	1:A:50:HIS:CD2	2.93	0.42
1:C:66:LEU:CD1	1:C:105:LEU:HD21	2.50	0.42
2:D:95:LYS:HD3	2:D:95:LYS:HA	1.87	0.41
3:D:147:HEM:HBC2	3:D:147:HEM:HMC2	2.02	0.41
1:A:66:LEU:CD1	1:A:105:LEU:HD21	2.50	0.41
2:D:6:GLU:CD	2:D:6:GLU:H	2.24	0.41
1:C:94:ASP:HA	1:C:95:PRO:HD3	1.97	0.41
2:B:6:GLU:CD	2:B:6:GLU:H	2.24	0.41
3:B:148:HEM:HMC2	3:B:148:HEM:HBC2	2.02	0.41
1:C:83:LEU:HA	1:C:83:LEU:HD12	1.79	0.41
1:A:83:LEU:HD12	1:A:83:LEU:HA	1.79	0.40
1:A:94:ASP:HA	1:A:95:PRO:HD3	1.96	0.40
1:C:50:HIS:C	1:C:50:HIS:CD2	2.93	0.40
2:D:78:LEU:HD12	2:D:78:LEU:HA	1.85	0.40

All (4) symmetry-related close contacts are listed below. The label for Atom-2 includes the symmetry operator and encoded unit-cell translations to be applied.

Atom-1	Atom-2	Interatomic distance (Å)	Clash overlap (Å)
2:B:21:ASP:OD2	1:C:78:ASN:OD1[2_647]	1.80	0.40
1:C:54:GLN:OE1	2:D:43:GLU:OE2[1_556]	1.85	0.35
2:B:117:HIS:O	2:D:17:LYS:CE[1_655]	2.09	0.11
2:B:21:ASP:OD2	1:C:78:ASN:CG[2_647]	2.16	0.04

## 5.3 Torsion angles [i](#)

### 5.3.1 Protein backbone [i](#)

In the following table, the Percentiles column shows the percent Ramachandran outliers of the chain as a percentile score with respect to all X-ray entries followed by that with respect to entries of similar resolution.

The Analysed column shows the number of residues for which the backbone conformation was analysed, and the total number of residues.

Mol	Chain	Analysed	Favoured	Allowed	Outliers	Percentiles	
1	A	139/141 (99%)	136 (98%)	3 (2%)	0	100	100
1	C	139/141 (99%)	136 (98%)	3 (2%)	0	100	100
2	B	144/146 (99%)	142 (99%)	2 (1%)	0	100	100
2	D	144/146 (99%)	142 (99%)	2 (1%)	0	100	100
All	All	566/574 (99%)	556 (98%)	10 (2%)	0	100	100

There are no Ramachandran outliers to report.

### 5.3.2 Protein sidechains [i](#)

In the following table, the Percentiles column shows the percent sidechain outliers of the chain as a percentile score with respect to all X-ray entries followed by that with respect to entries of similar resolution.

The Analysed column shows the number of residues for which the sidechain conformation was analysed, and the total number of residues.

Mol	Chain	Analysed	Rotameric	Outliers	Percentiles	
1	A	113/113 (100%)	104 (92%)	9 (8%)	12	23
1	C	113/113 (100%)	104 (92%)	9 (8%)	12	23
2	B	118/118 (100%)	107 (91%)	11 (9%)	9	17
2	D	118/118 (100%)	107 (91%)	11 (9%)	9	17
All	All	462/462 (100%)	422 (91%)	40 (9%)	10	20

All (40) residues with a non-rotameric sidechain are listed below:

Mol	Chain	Res	Type
1	A	16	LYS
1	A	52	SER
1	A	78	ASN
1	A	83	LEU
1	A	84	SER
1	A	96	VAL
1	A	109	LEU
1	A	116	GLU
1	A	138	SER
2	B	14	LEU
2	B	30	ARG
2	B	32	LEU
2	B	40	ARG

*Continued on next page...*

*Continued from previous page...*

<b>Mol</b>	<b>Chain</b>	<b>Res</b>	<b>Type</b>
2	B	44	SER
2	B	68	LEU
2	B	72	SER
2	B	75	LEU
2	B	78	LEU
2	B	80	ASN
2	B	146	HIS
1	C	16	LYS
1	C	52	SER
1	C	78	ASN
1	C	83	LEU
1	C	84	SER
1	C	96	VAL
1	C	109	LEU
1	C	116	GLU
1	C	138	SER
2	D	14	LEU
2	D	30	ARG
2	D	32	LEU
2	D	40	ARG
2	D	44	SER
2	D	68	LEU
2	D	72	SER
2	D	75	LEU
2	D	78	LEU
2	D	80	ASN
2	D	146	HIS

Sometimes sidechains can be flipped to improve hydrogen bonding and reduce clashes. All (8) such sidechains are listed below:

<b>Mol</b>	<b>Chain</b>	<b>Res</b>	<b>Type</b>
1	A	50	HIS
1	A	72	HIS
1	A	103	HIS
2	B	63	HIS
1	C	50	HIS
1	C	72	HIS
1	C	103	HIS
2	D	63	HIS

### 5.3.3 RNA [i](#)

There are no RNA molecules in this entry.

## 5.4 Non-standard residues in protein, DNA, RNA chains [i](#)

There are no non-standard protein/DNA/RNA residues in this entry.

## 5.5 Carbohydrates [i](#)

There are no monosaccharides in this entry.

## 5.6 Ligand geometry [i](#)

Of 5 ligands modelled in this entry, 1 is modelled with single atom - leaving 4 for Mogul analysis.

In the following table, the Counts columns list the number of bonds (or angles) for which Mogul statistics could be retrieved, the number of bonds (or angles) that are observed in the model and the number of bonds (or angles) that are defined in the Chemical Component Dictionary. The Link column lists molecule types, if any, to which the group is linked. The Z score for a bond length (or angle) is the number of standard deviations the observed value is removed from the expected value. A bond length (or angle) with  $|Z| > 2$  is considered an outlier worth inspection. RMSZ is the root-mean-square of all Z scores of the bond lengths (or angles).

Mol	Type	Chain	Res	Link	Bond lengths			Bond angles		
					Counts	RMSZ	# Z  > 2	Counts	RMSZ	# Z  > 2
3	HEM	A	142	1	41,50,50	1.16	6 (14%)	45,82,82	1.00	1 (2%)
3	HEM	B	148	2	41,50,50	1.18	6 (14%)	45,82,82	1.62	7 (15%)
3	HEM	D	147	2	41,50,50	1.18	6 (14%)	45,82,82	1.61	7 (15%)
3	HEM	C	142	1	41,50,50	1.16	6 (14%)	45,82,82	1.00	2 (4%)

In the following table, the Chirals column lists the number of chiral outliers, the number of chiral centers analysed, the number of these observed in the model and the number defined in the Chemical Component Dictionary. Similar counts are reported in the Torsion and Rings columns. '-' means no outliers of that kind were identified.

Mol	Type	Chain	Res	Link	Chirals	Torsions	Rings
3	HEM	A	142	1	-	5/12/54/54	-
3	HEM	B	148	2	-	2/12/54/54	-
3	HEM	D	147	2	-	2/12/54/54	-

*Continued on next page...*

Continued from previous page...

Mol	Type	Chain	Res	Link	Chirals	Torsions	Rings
3	HEM	C	142	1	-	5/12/54/54	-

All (24) bond length outliers are listed below:

Mol	Chain	Res	Type	Atoms	Z	Observed(Å)	Ideal(Å)
3	D	147	HEM	O2D-CGD	-3.35	1.19	1.30
3	B	148	HEM	O2D-CGD	-3.33	1.19	1.30
3	C	142	HEM	FE-NB	3.04	2.11	1.96
3	A	142	HEM	FE-NB	3.03	2.11	1.96
3	D	147	HEM	O2A-CGA	-2.43	1.22	1.30
3	B	148	HEM	O2A-CGA	-2.42	1.22	1.30
3	A	142	HEM	CHA-C4D	2.39	1.41	1.35
3	C	142	HEM	CHA-C4D	2.38	1.41	1.35
3	A	142	HEM	CHB-C1B	2.38	1.41	1.35
3	C	142	HEM	CHB-C1B	2.37	1.41	1.35
3	B	148	HEM	CHA-C4D	2.32	1.40	1.35
3	D	147	HEM	CHA-C4D	2.32	1.40	1.35
3	B	148	HEM	CHB-C1B	2.25	1.40	1.35
3	D	147	HEM	CHB-C1B	2.22	1.40	1.35
3	C	142	HEM	C3C-C2C	-2.22	1.37	1.40
3	A	142	HEM	C3C-C2C	-2.20	1.37	1.40
3	C	142	HEM	O2A-CGA	-2.17	1.23	1.30
3	A	142	HEM	O2A-CGA	-2.15	1.23	1.30
3	C	142	HEM	O2D-CGD	-2.14	1.23	1.30
3	A	142	HEM	O2D-CGD	-2.13	1.23	1.30
3	B	148	HEM	CBD-CGD	-2.09	1.45	1.50
3	D	147	HEM	CBD-CGD	-2.08	1.45	1.50
3	B	148	HEM	C3C-C2C	-2.06	1.37	1.40
3	D	147	HEM	C3C-C2C	-2.04	1.37	1.40

All (17) bond angle outliers are listed below:

Mol	Chain	Res	Type	Atoms	Z	Observed(°)	Ideal(°)
3	B	148	HEM	O2D-CGD-CBD	5.70	132.34	114.03
3	D	147	HEM	O2D-CGD-CBD	5.68	132.27	114.03
3	B	148	HEM	O2D-CGD-O1D	-5.20	110.33	123.30
3	D	147	HEM	O2D-CGD-O1D	-5.20	110.33	123.30
3	D	147	HEM	O2A-CGA-CBA	2.56	122.26	114.03
3	B	148	HEM	O2A-CGA-CBA	2.56	122.24	114.03
3	C	142	HEM	O2D-CGD-CBD	2.40	121.73	114.03
3	A	142	HEM	O2D-CGD-CBD	2.38	121.68	114.03
3	D	147	HEM	C4B-CHC-C1C	2.37	125.68	122.56

Continued on next page...

Continued from previous page...

Mol	Chain	Res	Type	Atoms	Z	Observed(°)	Ideal(°)
3	B	148	HEM	C4B-CHC-C1C	2.35	125.66	122.56
3	D	147	HEM	CMA-C3A-C4A	-2.16	125.15	128.46
3	B	148	HEM	CMA-C3A-C4A	-2.15	125.17	128.46
3	D	147	HEM	O2A-CGA-O1A	-2.09	118.09	123.30
3	B	148	HEM	O2A-CGA-O1A	-2.08	118.10	123.30
3	B	148	HEM	C4B-C3B-C2B	-2.08	105.46	107.11
3	D	147	HEM	C4B-C3B-C2B	-2.07	105.47	107.11
3	C	142	HEM	C4B-CHC-C1C	2.01	125.22	122.56

There are no chirality outliers.

All (14) torsion outliers are listed below:

Mol	Chain	Res	Type	Atoms
3	A	142	HEM	C2B-C3B-CAB-CBB
3	C	142	HEM	C2B-C3B-CAB-CBB
3	A	142	HEM	CAD-CBD-CGD-O1D
3	C	142	HEM	CAD-CBD-CGD-O1D
3	B	148	HEM	C4B-C3B-CAB-CBB
3	D	147	HEM	C4B-C3B-CAB-CBB
3	A	142	HEM	CAA-CBA-CGA-O2A
3	C	142	HEM	CAA-CBA-CGA-O2A
3	A	142	HEM	CAA-CBA-CGA-O1A
3	C	142	HEM	CAA-CBA-CGA-O1A
3	B	148	HEM	CAD-CBD-CGD-O1D
3	D	147	HEM	CAD-CBD-CGD-O1D
3	A	142	HEM	CAD-CBD-CGD-O2D
3	C	142	HEM	CAD-CBD-CGD-O2D

There are no ring outliers.

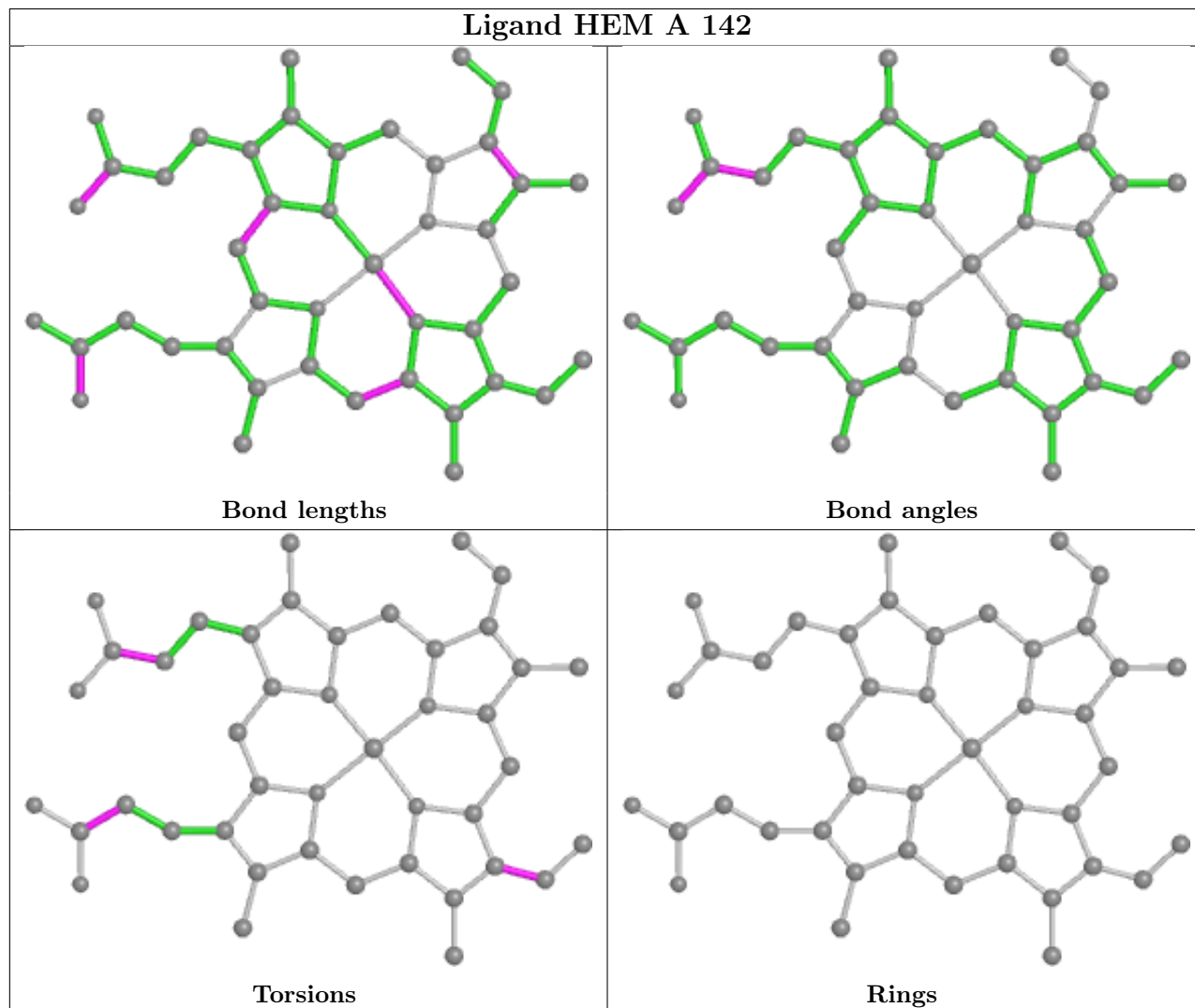
4 monomers are involved in 4 short contacts:

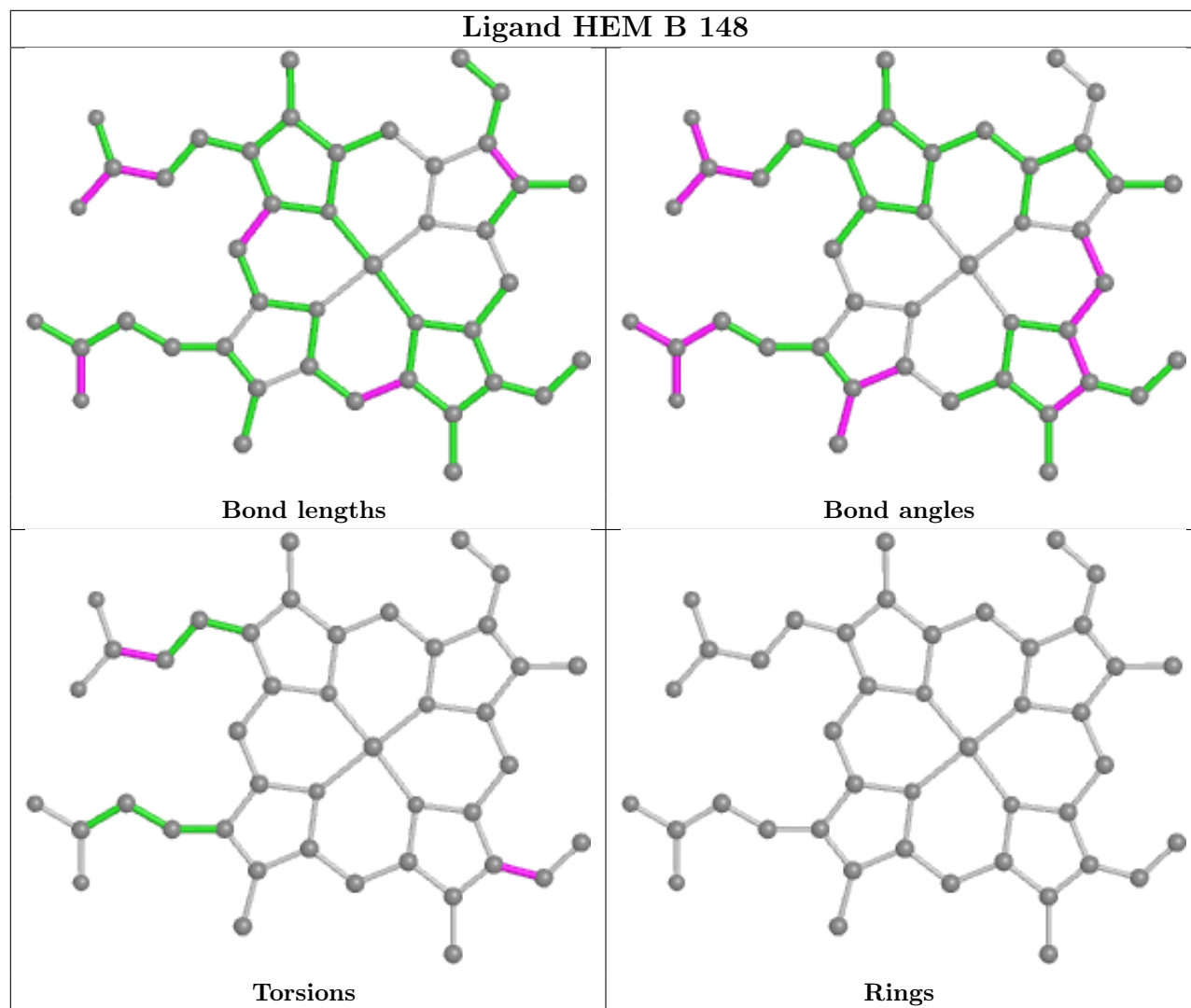
Mol	Chain	Res	Type	Clashes	Symm-Clashes
3	A	142	HEM	1	0
3	B	148	HEM	1	0
3	D	147	HEM	1	0
3	C	142	HEM	1	0

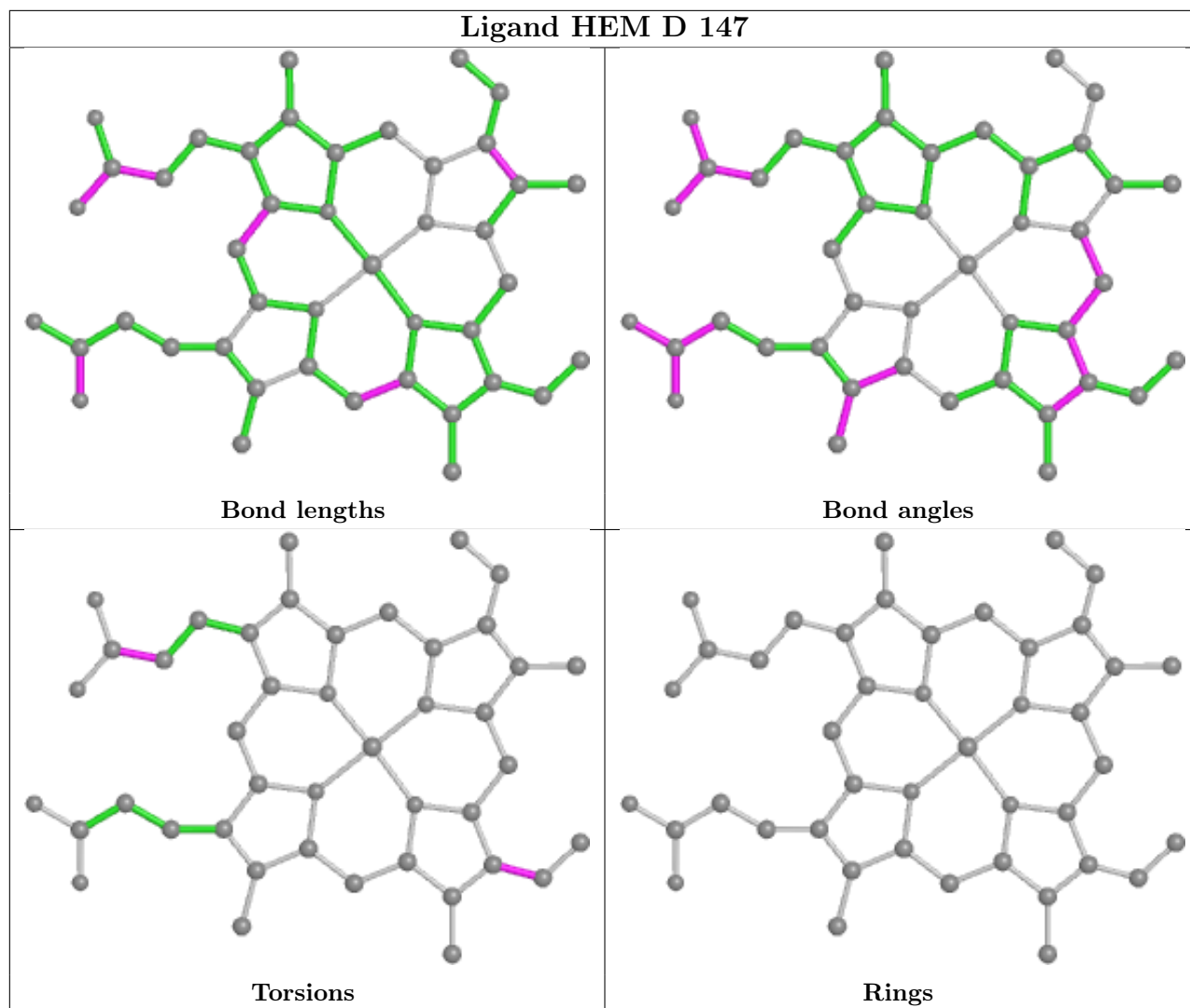
The following is a two-dimensional graphical depiction of Mogul quality analysis of bond lengths, bond angles, torsion angles, and ring geometry for all instances of the Ligand of Interest. In addition, ligands with molecular weight > 250 and outliers as shown on the validation Tables will also be included. For torsion angles, if less than 5% of the Mogul distribution of torsion angles is within 10 degrees of the torsion angle in question, then that torsion angle is considered an outlier.

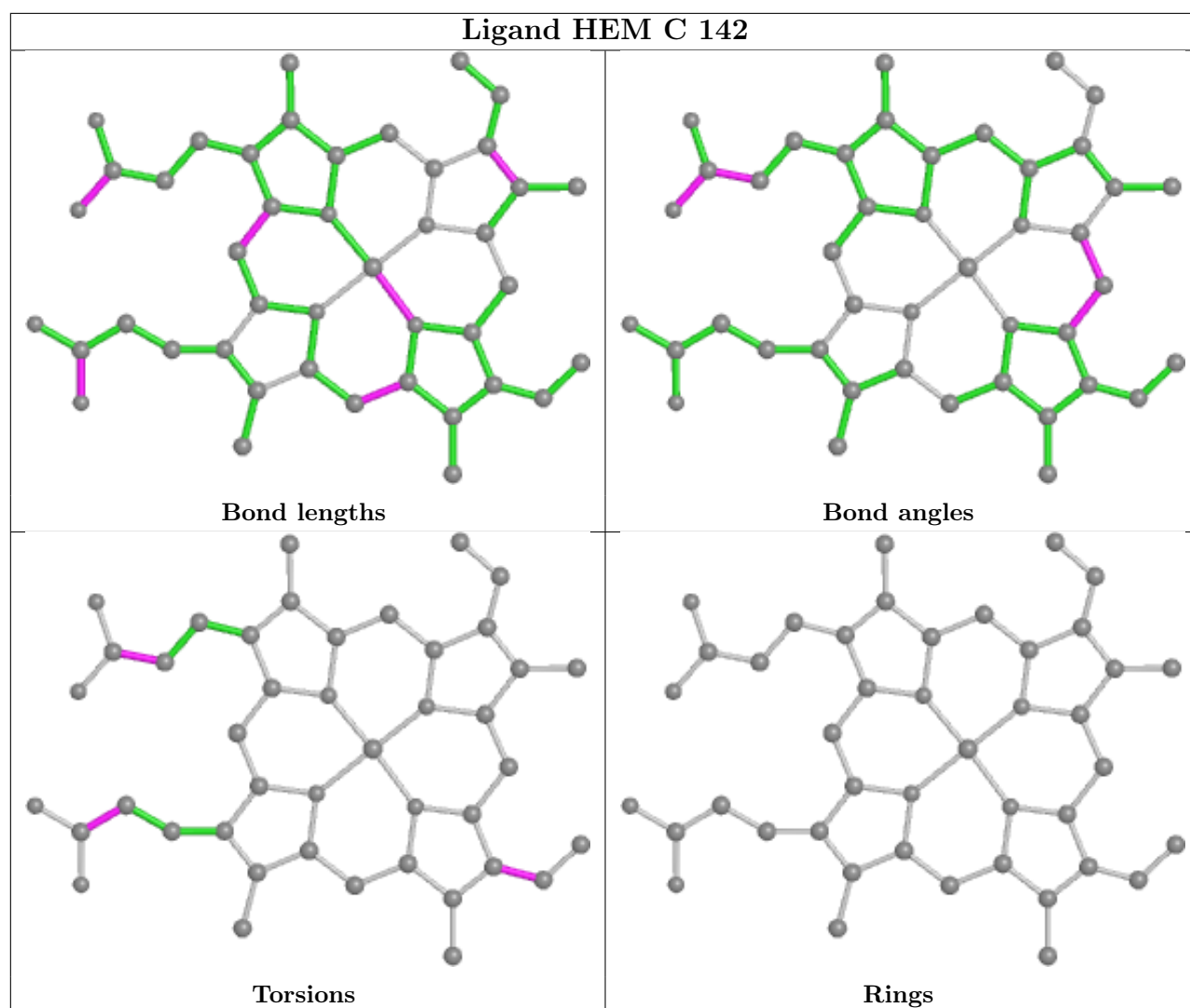


Any bond that is central to one or more torsion angles identified as an outlier by Mogul will be highlighted in the graph. For rings, the root-mean-square deviation (RMSD) between the ring in question and similar rings identified by Mogul is calculated over all ring torsion angles. If the average RMSD is greater than 60 degrees and the minimal RMSD between the ring in question and any Mogul-identified rings is also greater than 60 degrees, then that ring is considered an outlier. The outliers are highlighted in purple. The color gray indicates Mogul did not find sufficient equivalents in the CSD to analyse the geometry.









## 5.7 Other polymers [i](#)

There are no such residues in this entry.

## 5.8 Polymer linkage issues [i](#)

There are no chain breaks in this entry.

## 6 Fit of model and data

### 6.1 Protein, DNA and RNA chains

Unable to reproduce the depositors R factor - this section is therefore empty.

### 6.2 Non-standard residues in protein, DNA, RNA chains

Unable to reproduce the depositors R factor - this section is therefore empty.

### 6.3 Carbohydrates

Unable to reproduce the depositors R factor - this section is therefore empty.

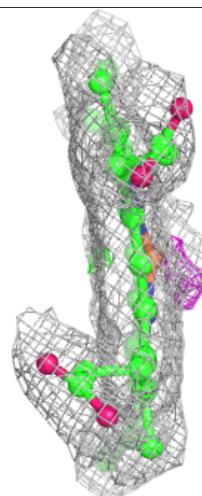
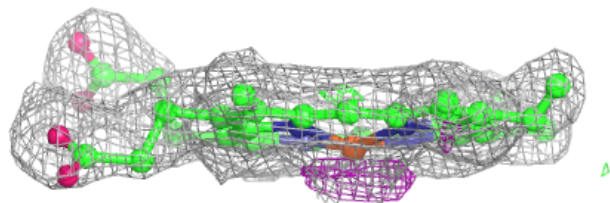
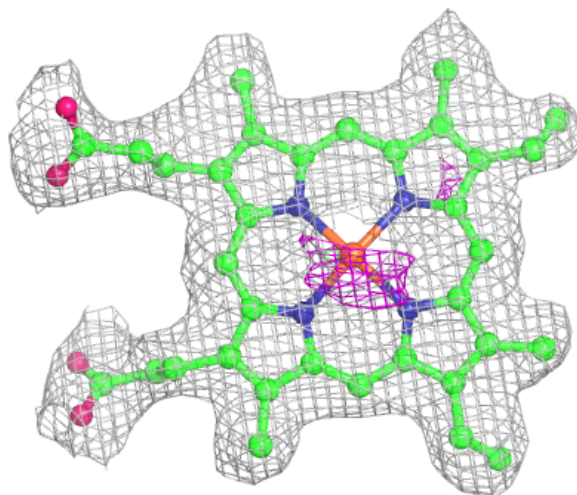
### 6.4 Ligands

Unable to reproduce the depositors R factor - this section is therefore empty.

The following is a graphical depiction of the model fit to experimental electron density of all instances of the Ligand of Interest. In addition, ligands with molecular weight > 250 and outliers as shown on the geometry validation Tables will also be included. Each fit is shown from different orientation to approximate a three-dimensional view.

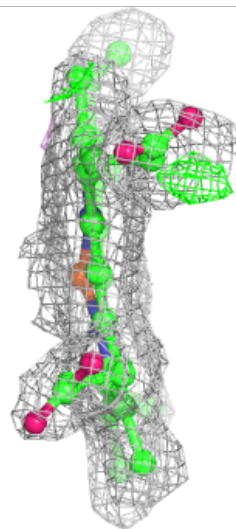
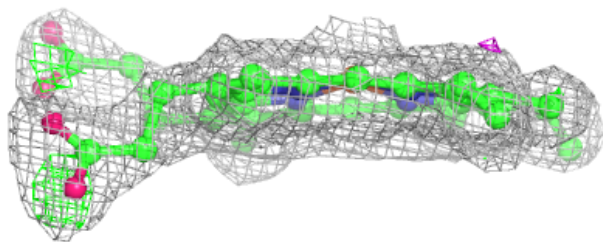
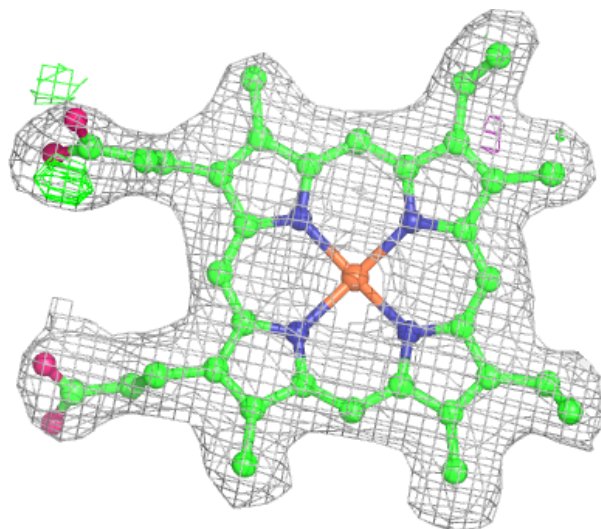
**Electron density around HEM A 142:**

$2mF_o-DF_c$  (at 0.7 rmsd) in gray  
 $mF_o-DF_c$  (at 3 rmsd) in purple (negative)  
and green (positive)



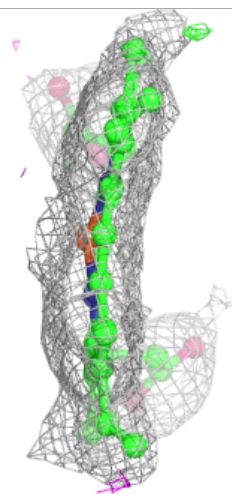
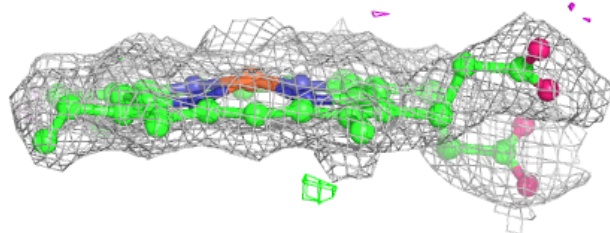
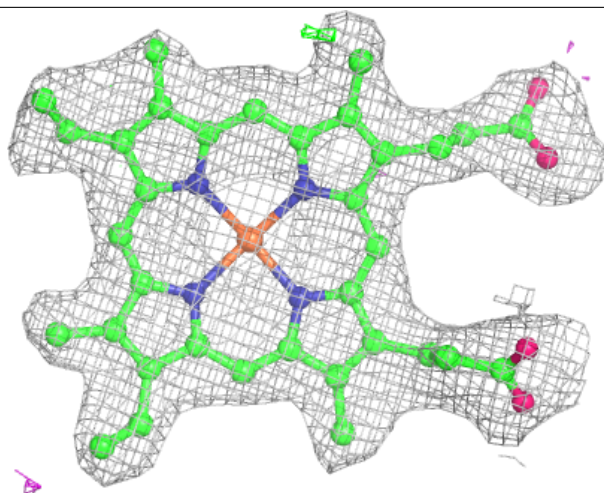
**Electron density around HEM B 148:**

$2mF_o-DF_c$  (at 0.7 rmsd) in gray  
 $mF_o-DF_c$  (at 3 rmsd) in purple (negative)  
and green (positive)

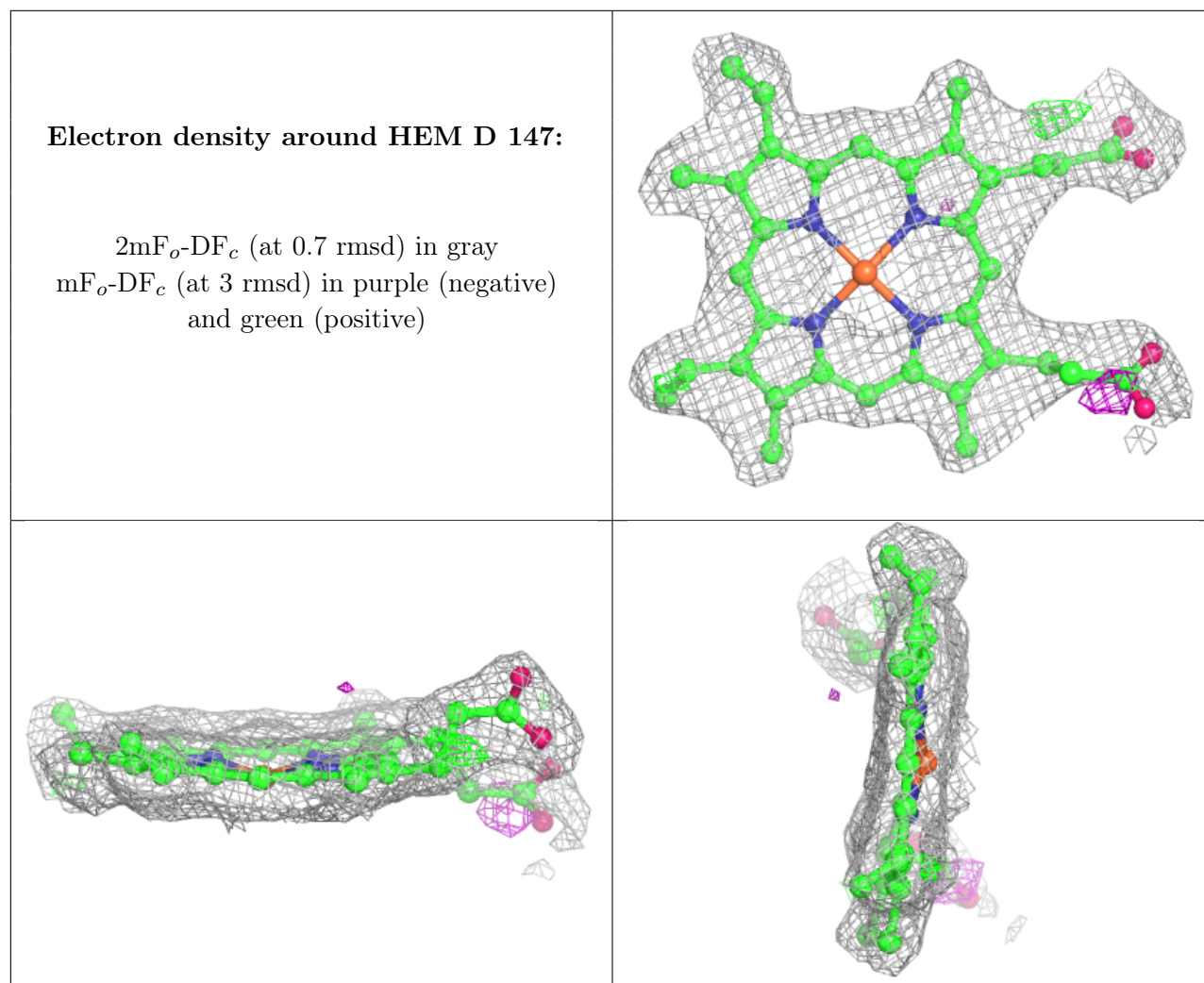


**Electron density around HEM C 142:**

$2mF_o-DF_c$  (at 0.7 rmsd) in gray  
 $mF_o-DF_c$  (at 3 rmsd) in purple (negative)  
and green (positive)







## 6.5 Other polymers [i](#)

Unable to reproduce the depositor's R factor - this section is therefore empty.