



wwPDB X-ray Structure Validation Summary Report ⓘ

Sep 13, 2020 – 04:17 PM BST

PDB ID : 4GJW
Title : Structure of the tetramerization domain of Nipah virus phosphoprotein
Authors : Yabukarski, F.; Tarbouriech, N.; Jamin, M.
Deposited on : 2012-08-10
Resolution : 3.00 Å(reported)

This is a wwPDB X-ray Structure Validation Summary Report for a publicly released PDB entry.

We welcome your comments at validation@mail.wwpdb.org

A user guide is available at

<https://www.wwpdb.org/validation/2017/XrayValidationReportHelp>

with specific help available everywhere you see the ⓘ symbol.

The following versions of software and data (see [references ⓘ](#)) were used in the production of this report:

MolProbity : 4.02b-467
Mogul : 1.8.5 (274361), CSD as541be (2020)
Xtriage (Phenix) : 1.13
EDS : 2.14.4.dev1
Percentile statistics : 20191225.v01 (using entries in the PDB archive December 25th 2019)
Refmac : 5.8.0158
CCP4 : 7.0.044 (Gargrove)
Ideal geometry (proteins) : Engh & Huber (2001)
Ideal geometry (DNA, RNA) : Parkinson et al. (1996)
Validation Pipeline (wwPDB-VP) : 2.14.4.dev1

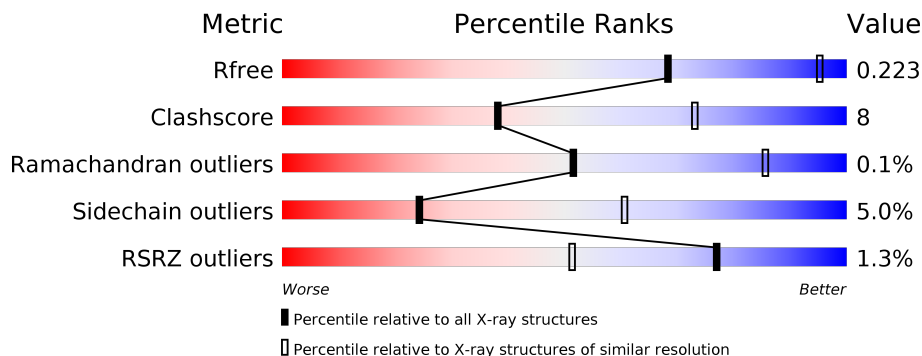
1 Overall quality at a glance

The following experimental techniques were used to determine the structure:

X-RAY DIFFRACTION

The reported resolution of this entry is 3.00 Å.

Percentile scores (ranging between 0-100) for global validation metrics of the entry are shown in the following graphic. The table shows the number of entries on which the scores are based.



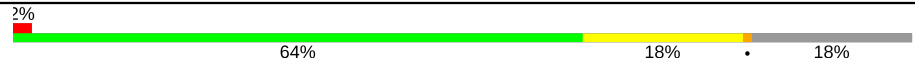

Metric	Whole archive (#Entries)	Similar resolution (#Entries, resolution range(Å))
R_{free}	130704	2092 (3.00-3.00)
Clashscore	141614	2416 (3.00-3.00)
Ramachandran outliers	138981	2333 (3.00-3.00)
Sidechain outliers	138945	2336 (3.00-3.00)
RSRZ outliers	127900	1990 (3.00-3.00)

The table below summarises the geometric issues observed across the polymeric chains and their fit to the electron density. The red, orange, yellow and green segments on the lower bar indicate the fraction of residues that contain outliers for ≥ 3 , 2, 1 and 0 types of geometric quality criteria respectively. A grey segment represents the fraction of residues that are not modelled. The numeric value for each fraction is indicated below the corresponding segment, with a dot representing fractions $\leq 5\%$. The upper red bar (where present) indicates the fraction of residues that have poor fit to the electron density. The numeric value is given above the bar.

Mol	Chain	Length	Quality of chain
1	A	119	
1	B	119	
1	C	119	
1	D	119	
1	E	119	
1	F	119	

Continued on next page...

Continued from previous page...

Mol	Chain	Length	Quality of chain
1	G	119	 <p>2% 64% 18% 18%</p>
1	H	119	 <p>65% 14% 19%</p>

2 Entry composition [i](#)

There are 5 unique types of molecules in this entry. The entry contains 6360 atoms, of which 0 are hydrogens and 0 are deuteriums.

In the tables below, the ZeroOcc column contains the number of atoms modelled with zero occupancy, the AltConf column contains the number of residues with at least one atom in alternate conformation and the Trace column contains the number of residues modelled with at most 2 atoms.

- Molecule 1 is a protein called Phosphoprotein.

Mol	Chain	Residues	Atoms						ZeroOcc	AltConf	Trace
			Total	C	N	O	S	Se			
1	A	96	775	489	129	153	1	3	0	0	0
1	B	96	775	489	129	153	1	3	0	0	0
1	C	98	788	497	131	156	1	3	0	0	0
1	D	101	813	510	134	165	1	3	0	0	0
1	E	98	788	497	131	156	1	3	0	0	0
1	F	98	791	497	131	159	1	3	0	0	0
1	G	98	788	497	131	156	1	3	0	0	0
1	H	96	775	489	129	153	1	3	0	0	0

There are 72 discrepancies between the modelled and reference sequences:

Chain	Residue	Modelled	Actual	Comment	Reference
A	470	MSE	-	INITIATING METHIONINE	UNP Q9IK91
A	581	LEU	-	EXPRESSION TAG	UNP Q9IK91
A	582	GLU	-	EXPRESSION TAG	UNP Q9IK91
A	583	HIS	-	EXPRESSION TAG	UNP Q9IK91
A	584	HIS	-	EXPRESSION TAG	UNP Q9IK91
A	585	HIS	-	EXPRESSION TAG	UNP Q9IK91
A	586	HIS	-	EXPRESSION TAG	UNP Q9IK91
A	587	HIS	-	EXPRESSION TAG	UNP Q9IK91
A	588	HIS	-	EXPRESSION TAG	UNP Q9IK91
B	470	MSE	-	INITIATING METHIONINE	UNP Q9IK91
B	581	LEU	-	EXPRESSION TAG	UNP Q9IK91
B	582	GLU	-	EXPRESSION TAG	UNP Q9IK91
B	583	HIS	-	EXPRESSION TAG	UNP Q9IK91

Continued on next page...

Continued from previous page...

Chain	Residue	Modelled	Actual	Comment	Reference
B	584	HIS	-	EXPRESSION TAG	UNP Q9IK91
B	585	HIS	-	EXPRESSION TAG	UNP Q9IK91
B	586	HIS	-	EXPRESSION TAG	UNP Q9IK91
B	587	HIS	-	EXPRESSION TAG	UNP Q9IK91
B	588	HIS	-	EXPRESSION TAG	UNP Q9IK91
C	470	MSE	-	INITIATING METHIONINE	UNP Q9IK91
C	581	LEU	-	EXPRESSION TAG	UNP Q9IK91
C	582	GLU	-	EXPRESSION TAG	UNP Q9IK91
C	583	HIS	-	EXPRESSION TAG	UNP Q9IK91
C	584	HIS	-	EXPRESSION TAG	UNP Q9IK91
C	585	HIS	-	EXPRESSION TAG	UNP Q9IK91
C	586	HIS	-	EXPRESSION TAG	UNP Q9IK91
C	587	HIS	-	EXPRESSION TAG	UNP Q9IK91
C	588	HIS	-	EXPRESSION TAG	UNP Q9IK91
D	470	MSE	-	INITIATING METHIONINE	UNP Q9IK91
D	581	LEU	-	EXPRESSION TAG	UNP Q9IK91
D	582	GLU	-	EXPRESSION TAG	UNP Q9IK91
D	583	HIS	-	EXPRESSION TAG	UNP Q9IK91
D	584	HIS	-	EXPRESSION TAG	UNP Q9IK91
D	585	HIS	-	EXPRESSION TAG	UNP Q9IK91
D	586	HIS	-	EXPRESSION TAG	UNP Q9IK91
D	587	HIS	-	EXPRESSION TAG	UNP Q9IK91
D	588	HIS	-	EXPRESSION TAG	UNP Q9IK91
E	470	MSE	-	INITIATING METHIONINE	UNP Q9IK91
E	581	LEU	-	EXPRESSION TAG	UNP Q9IK91
E	582	GLU	-	EXPRESSION TAG	UNP Q9IK91
E	583	HIS	-	EXPRESSION TAG	UNP Q9IK91
E	584	HIS	-	EXPRESSION TAG	UNP Q9IK91
E	585	HIS	-	EXPRESSION TAG	UNP Q9IK91
E	586	HIS	-	EXPRESSION TAG	UNP Q9IK91
E	587	HIS	-	EXPRESSION TAG	UNP Q9IK91
E	588	HIS	-	EXPRESSION TAG	UNP Q9IK91
F	470	MSE	-	INITIATING METHIONINE	UNP Q9IK91
F	581	LEU	-	EXPRESSION TAG	UNP Q9IK91
F	582	GLU	-	EXPRESSION TAG	UNP Q9IK91
F	583	HIS	-	EXPRESSION TAG	UNP Q9IK91
F	584	HIS	-	EXPRESSION TAG	UNP Q9IK91
F	585	HIS	-	EXPRESSION TAG	UNP Q9IK91
F	586	HIS	-	EXPRESSION TAG	UNP Q9IK91
F	587	HIS	-	EXPRESSION TAG	UNP Q9IK91
F	588	HIS	-	EXPRESSION TAG	UNP Q9IK91
G	470	MSE	-	INITIATING METHIONINE	UNP Q9IK91

Continued on next page...

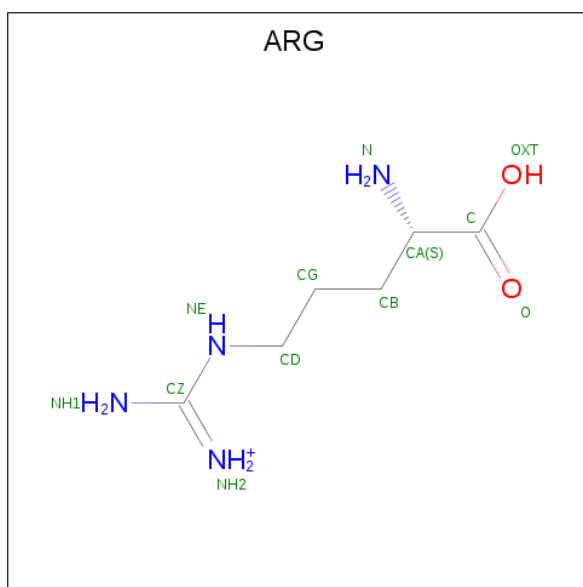
Continued from previous page...

Chain	Residue	Modelled	Actual	Comment	Reference
G	581	LEU	-	EXPRESSION TAG	UNP Q9IK91
G	582	GLU	-	EXPRESSION TAG	UNP Q9IK91
G	583	HIS	-	EXPRESSION TAG	UNP Q9IK91
G	584	HIS	-	EXPRESSION TAG	UNP Q9IK91
G	585	HIS	-	EXPRESSION TAG	UNP Q9IK91
G	586	HIS	-	EXPRESSION TAG	UNP Q9IK91
G	587	HIS	-	EXPRESSION TAG	UNP Q9IK91
G	588	HIS	-	EXPRESSION TAG	UNP Q9IK91
H	470	MSE	-	INITIATING METHIONINE	UNP Q9IK91
H	581	LEU	-	EXPRESSION TAG	UNP Q9IK91
H	582	GLU	-	EXPRESSION TAG	UNP Q9IK91
H	583	HIS	-	EXPRESSION TAG	UNP Q9IK91
H	584	HIS	-	EXPRESSION TAG	UNP Q9IK91
H	585	HIS	-	EXPRESSION TAG	UNP Q9IK91
H	586	HIS	-	EXPRESSION TAG	UNP Q9IK91
H	587	HIS	-	EXPRESSION TAG	UNP Q9IK91
H	588	HIS	-	EXPRESSION TAG	UNP Q9IK91

- Molecule 2 is CHLORIDE ION (three-letter code: CL) (formula: Cl).

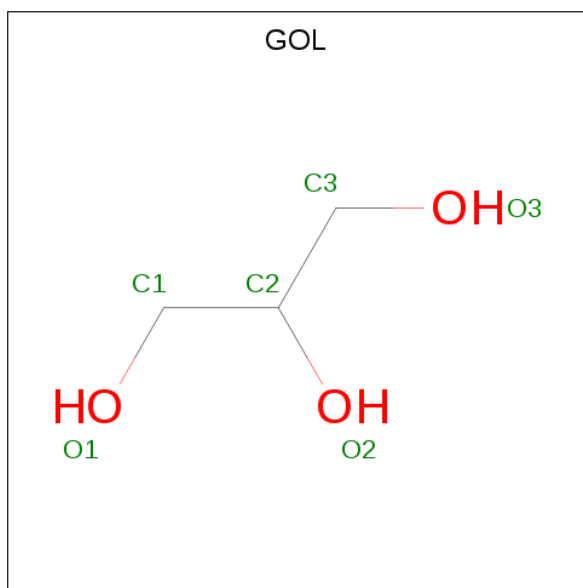
Mol	Chain	Residues	Atoms	ZeroOcc	AltConf
2	H	1	Total Cl 1 1	0	0
2	G	2	Total Cl 2 2	0	0
2	B	1	Total Cl 1 1	0	0
2	D	1	Total Cl 1 1	0	0
2	F	1	Total Cl 1 1	0	0

- Molecule 3 is ARGININE (three-letter code: ARG) (formula: C₆H₁₅N₄O₂).



Mol	Chain	Residues	Atoms				ZeroOcc	AltConf
			Total	C	N	O		
3	B	1	12	6	4	2	0	0

- Molecule 4 is GLYCEROL (three-letter code: GOL) (formula: C₃H₈O₃).



Mol	Chain	Residues	Atoms			ZeroOcc	AltConf
			Total	C	O		
4	C	1	6	3	3	0	0
4	D	1	6	3	3	0	0
4	D	1	6	3	3	0	0

Continued on next page...

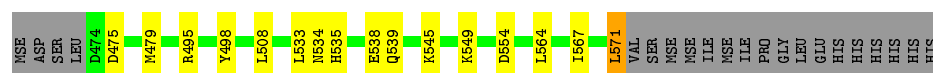
Continued from previous page...

Mol	Chain	Residues	Atoms			ZeroOcc	AltConf
4	G	1	Total	C	O	0	0
			6	3	3		
4	G	1	Total	C	O	0	0
			6	3	3		
4	G	1	Total	C	O	0	0
			6	3	3		
4	H	1	Total	C	O	0	0
			6	3	3		

- Molecule 5 is water.

Mol	Chain	Residues	Atoms		ZeroOcc	AltConf
5	B	1	Total	O	0	0
			1	1		
5	C	2	Total	O	0	0
			2	2		
5	D	1	Total	O	0	0
			1	1		
5	G	3	Total	O	0	0
			3	3		

Chain F:  69% 13% 18%



● Molecule 1: Phosphoprotein

Chain G:  2% 64% 18% 18%



● Molecule 1: Phosphoprotein

Chain H:  65% 14% 19%



4 Data and refinement statistics

Property	Value	Source
Space group	P 1 21 1	Depositor
Cell constants a, b, c, α , β , γ	59.50 Å 85.60 Å 122.60 Å 90.00° 94.70° 90.00°	Depositor
Resolution (Å)	48.75 – 3.00 48.75 – 3.00	Depositor EDS
% Data completeness (in resolution range)	99.0 (48.75-3.00) 99.3 (48.75-3.00)	Depositor EDS
R_{merge}	0.14	Depositor
R_{sym}	(Not available)	Depositor
$\langle I/\sigma(I) \rangle$ ¹	2.27 (at 3.01 Å)	Xtrriage
Refinement program	PHENIX (phenix.refine: 1.7.3_928)	Depositor
R, R_{free}	0.175 , 0.229 0.171 , 0.223	Depositor DCC
R_{free} test set	1257 reflections (5.11%)	wwPDB-VP
Wilson B-factor (Å ²)	55.3	Xtrriage
Anisotropy	0.234	Xtrriage
Bulk solvent k_{sol} (e/Å ³), B_{sol} (Å ²)	0.35 , 65.9	EDS
L-test for twinning ²	$\langle L \rangle = 0.48$, $\langle L^2 \rangle = 0.31$	Xtrriage
Estimated twinning fraction	No twinning to report.	Xtrriage
F_o, F_c correlation	0.95	EDS
Total number of atoms	6360	wwPDB-VP
Average B, all atoms (Å ²)	55.0	wwPDB-VP

Xtrriage's analysis on translational NCS is as follows: *The largest off-origin peak in the Patterson function is 11.89% of the height of the origin peak. No significant pseudotranslation is detected.*

¹ Intensities estimated from amplitudes.

² Theoretical values of $\langle |L| \rangle$, $\langle L^2 \rangle$ for acentric reflections are 0.5, 0.333 respectively for untwinned datasets, and 0.375, 0.2 for perfectly twinned datasets.

5 Model quality [i](#)

5.1 Standard geometry [i](#)

Bond lengths and bond angles in the following residue types are not validated in this section: GOL, CL

The Z score for a bond length (or angle) is the number of standard deviations the observed value is removed from the expected value. A bond length (or angle) with $|Z| > 5$ is considered an outlier worth inspection. RMSZ is the root-mean-square of all Z scores of the bond lengths (or angles).

Mol	Chain	Bond lengths		Bond angles	
		RMSZ	# Z >5	RMSZ	# Z >5
1	A	0.60	0/785	0.74	0/1057
1	B	0.64	0/785	0.77	0/1057
1	C	0.63	0/798	0.78	0/1075
1	D	0.60	0/823	0.74	0/1109
1	E	0.61	0/798	0.78	0/1075
1	F	0.59	0/801	0.77	0/1079
1	G	0.60	0/798	0.78	0/1075
1	H	0.61	0/785	0.74	0/1057
All	All	0.61	0/6373	0.76	0/8584

There are no bond length outliers.

There are no bond angle outliers.

There are no chirality outliers.

There are no planarity outliers.

5.2 Too-close contacts [i](#)

In the following table, the Non-H and H(model) columns list the number of non-hydrogen atoms and hydrogen atoms in the chain respectively. The H(added) column lists the number of hydrogen atoms added and optimized by MolProbity. The Clashes column lists the number of clashes within the asymmetric unit, whereas Symm-Clashes lists symmetry related clashes.

Mol	Chain	Non-H	H(model)	H(added)	Clashes	Symm-Clashes
1	A	775	0	766	16	0
1	B	775	0	766	15	0
1	C	788	0	780	13	0
1	D	813	0	794	19	0
1	E	788	0	780	24	0

Continued on next page...

Continued from previous page...

Mol	Chain	Non-H	H(model)	H(added)	Clashes	Symm-Clashes
1	F	791	0	774	15	0
1	G	788	0	780	25	0
1	H	775	0	766	22	0
2	B	1	0	0	0	0
2	D	1	0	0	0	0
2	F	1	0	0	0	0
2	G	2	0	0	0	0
2	H	1	0	0	0	0
3	B	12	0	12	1	0
4	C	6	0	8	1	0
4	D	12	0	16	1	0
4	G	18	0	24	0	0
4	H	6	0	8	0	0
5	B	1	0	0	0	0
5	C	2	0	0	0	0
5	D	1	0	0	0	0
5	G	3	0	0	0	0
All	All	6360	0	6274	96	0

The all-atom clashscore is defined as the number of clashes found per 1000 atoms (including hydrogen atoms). The all-atom clashscore for this structure is 8.

The worst 5 of 96 close contacts within the same asymmetric unit are listed below, sorted by their clash magnitude.

Atom-1	Atom-2	Interatomic distance (Å)	Clash overlap (Å)
1:C:532:ARG:NH2	1:F:534:ASN:OD1	2.03	0.91
1:E:481:SER:HA	1:G:518:MSE:HE3	1.56	0.86
1:E:537:GLU:OE1	1:F:539:GLN:NE2	2.17	0.78
1:G:535:HIS:O	1:G:539:GLN:HG3	1.85	0.76
1:B:537:GLU:OE1	1:H:539:GLN:NE2	2.20	0.75

There are no symmetry-related clashes.

5.3 Torsion angles [i](#)

5.3.1 Protein backbone [i](#)

In the following table, the Percentiles column shows the percent Ramachandran outliers of the chain as a percentile score with respect to all X-ray entries followed by that with respect to entries of similar resolution.

The Analysed column shows the number of residues for which the backbone conformation was analysed, and the total number of residues.

Mol	Chain	Analysed	Favoured	Allowed	Outliers	Percentiles	
1	A	94/119 (79%)	92 (98%)	2 (2%)	0	100	100
1	B	94/119 (79%)	92 (98%)	2 (2%)	0	100	100
1	C	96/119 (81%)	94 (98%)	2 (2%)	0	100	100
1	D	99/119 (83%)	97 (98%)	2 (2%)	0	100	100
1	E	96/119 (81%)	94 (98%)	2 (2%)	0	100	100
1	F	96/119 (81%)	94 (98%)	1 (1%)	1 (1%)	15	53
1	G	96/119 (81%)	94 (98%)	2 (2%)	0	100	100
1	H	94/119 (79%)	93 (99%)	1 (1%)	0	100	100
All	All	765/952 (80%)	750 (98%)	14 (2%)	1 (0%)	51	85

All (1) Ramachandran outliers are listed below:

Mol	Chain	Res	Type
1	F	475	ASP

5.3.2 Protein sidechains [i](#)

In the following table, the Percentiles column shows the percent sidechain outliers of the chain as a percentile score with respect to all X-ray entries followed by that with respect to entries of similar resolution.

The Analysed column shows the number of residues for which the sidechain conformation was analysed, and the total number of residues.

Mol	Chain	Analysed	Rotameric	Outliers	Percentiles	
1	A	90/105 (86%)	87 (97%)	3 (3%)	38	73
1	B	90/105 (86%)	84 (93%)	6 (7%)	16	49
1	C	92/105 (88%)	90 (98%)	2 (2%)	52	81
1	D	95/105 (90%)	89 (94%)	6 (6%)	18	51
1	E	92/105 (88%)	87 (95%)	5 (5%)	22	57
1	F	92/105 (88%)	88 (96%)	4 (4%)	29	66
1	G	92/105 (88%)	86 (94%)	6 (6%)	17	50
1	H	90/105 (86%)	86 (96%)	4 (4%)	28	65
All	All	733/840 (87%)	697 (95%)	36 (5%)	24	61

5 of 36 residues with a non-rotameric sidechain are listed below:

Mol	Chain	Res	Type
1	D	555	ARG
1	E	554	ASP
1	H	554	ASP
1	E	538	GLU
1	E	571	LEU

Some sidechains can be flipped to improve hydrogen bonding and reduce clashes. 5 of 7 such sidechains are listed below:

Mol	Chain	Res	Type
1	G	497	ASN
1	H	539	GLN
1	G	539	GLN
1	D	561	ASN
1	G	570	HIS

5.3.3 RNA [i](#)

There are no RNA molecules in this entry.

5.4 Non-standard residues in protein, DNA, RNA chains [i](#)

There are no non-standard protein/DNA/RNA residues in this entry.

5.5 Carbohydrates [i](#)

There are no monosaccharides in this entry.

5.6 Ligand geometry [i](#)

Of 14 ligands modelled in this entry, 6 are monoatomic - leaving 8 for Mogul analysis.

In the following table, the Counts columns list the number of bonds (or angles) for which Mogul statistics could be retrieved, the number of bonds (or angles) that are observed in the model and the number of bonds (or angles) that are defined in the Chemical Component Dictionary. The Link column lists molecule types, if any, to which the group is linked. The Z score for a bond length (or angle) is the number of standard deviations the observed value is removed from the expected value. A bond length (or angle) with $|Z| > 2$ is considered an outlier worth inspection. RMSZ is the root-mean-square of all Z scores of the bond lengths (or angles).

Mol	Type	Chain	Res	Link	Bond lengths			Bond angles		
					Counts	RMSZ	# Z > 2	Counts	RMSZ	# Z > 2
4	GOL	D	602	-	5,5,5	0.57	0	5,5,5	0.71	0
4	GOL	G	604	-	5,5,5	0.47	0	5,5,5	0.94	0
4	GOL	H	602	-	5,5,5	0.38	0	5,5,5	0.87	0
4	GOL	G	605	-	5,5,5	0.48	0	5,5,5	0.35	0
3	ARG	B	602	-	7,11,11	0.65	0	6,13,13	0.80	0
4	GOL	D	603	-	5,5,5	0.44	0	5,5,5	0.88	0
4	GOL	C	1001	-	5,5,5	0.34	0	5,5,5	0.49	0
4	GOL	G	603	-	5,5,5	0.35	0	5,5,5	0.26	0

In the following table, the Chirals column lists the number of chiral outliers, the number of chiral centers analysed, the number of these observed in the model and the number defined in the Chemical Component Dictionary. Similar counts are reported in the Torsion and Rings columns. '-' means no outliers of that kind were identified.

Mol	Type	Chain	Res	Link	Chirals	Torsions	Rings
4	GOL	D	602	-	-	0/4/4/4	-
4	GOL	G	604	-	-	2/4/4/4	-
4	GOL	H	602	-	-	3/4/4/4	-
4	GOL	G	605	-	-	1/4/4/4	-
3	ARG	B	602	-	-	2/7/11/11	-
4	GOL	D	603	-	-	4/4/4/4	-
4	GOL	C	1001	-	-	2/4/4/4	-
4	GOL	G	603	-	-	4/4/4/4	-

There are no bond length outliers.

There are no bond angle outliers.

There are no chirality outliers.

5 of 18 torsion outliers are listed below:

Mol	Chain	Res	Type	Atoms
4	H	602	GOL	O1-C1-C2-C3
4	G	604	GOL	C1-C2-C3-O3
4	D	603	GOL	O1-C1-C2-C3
4	D	603	GOL	C1-C2-C3-O3
4	C	1001	GOL	O1-C1-C2-C3

There are no ring outliers.

3 monomers are involved in 3 short contacts:

Mol	Chain	Res	Type	Clashes	Symm-Clashes
4	D	602	GOL	1	0
3	B	602	ARG	1	0
4	C	1001	GOL	1	0

5.7 Other polymers [i](#)

There are no such residues in this entry.

5.8 Polymer linkage issues [i](#)

There are no chain breaks in this entry.

6 Fit of model and data [i](#)

6.1 Protein, DNA and RNA chains [i](#)

In the following table, the column labelled '#RSRZ > 2' contains the number (and percentage) of RSRZ outliers, followed by percent RSRZ outliers for the chain as percentile scores relative to all X-ray entries and entries of similar resolution. The OWAB column contains the minimum, median, 95th percentile and maximum values of the occupancy-weighted average B-factor per residue. The column labelled 'Q < 0.9' lists the number of (and percentage) of residues with an average occupancy less than 0.9.

Mol	Chain	Analysed	<RSRZ>	#RSRZ>2	OWAB(Å ²)	Q<0.9
1	A	93/119 (78%)	-0.35	1 (1%) 80 56	29, 50, 86, 113	0
1	B	93/119 (78%)	-0.38	1 (1%) 80 56	30, 50, 85, 113	0
1	C	95/119 (79%)	-0.37	0 100 100	32, 51, 95, 131	0
1	D	98/119 (82%)	-0.23	3 (3%) 49 21	31, 49, 94, 119	0
1	E	95/119 (79%)	-0.42	3 (3%) 47 20	34, 51, 95, 122	0
1	F	95/119 (79%)	-0.42	0 100 100	33, 51, 93, 134	0
1	G	95/119 (79%)	-0.42	2 (2%) 63 34	35, 51, 94, 142	0
1	H	93/119 (78%)	-0.40	0 100 100	29, 48, 85, 111	0
All	All	757/952 (79%)	-0.37	10 (1%) 77 51	29, 51, 94, 142	0

The worst 5 of 10 RSRZ outliers are listed below:

Mol	Chain	Res	Type	RSRZ
1	G	573	SER	4.0
1	D	571	LEU	3.2
1	A	570	HIS	2.6
1	D	474	ASP	2.4
1	G	571	LEU	2.4

6.2 Non-standard residues in protein, DNA, RNA chains [i](#)

There are no non-standard protein/DNA/RNA residues in this entry.

6.3 Carbohydrates [i](#)

There are no monosaccharides in this entry.

6.4 Ligands [i](#)

In the following table, the Atoms column lists the number of modelled atoms in the group and the number defined in the chemical component dictionary. The B-factors column lists the minimum, median, 95th percentile and maximum values of B factors of atoms in the group. The column labelled 'Q< 0.9' lists the number of atoms with occupancy less than 0.9.

Mol	Type	Chain	Res	Atoms	RSCC	RSR	B-factors(Å ²)	Q<0.9
3	ARG	B	602	12/12	0.85	0.34	45,64,95,133	0
4	GOL	D	603	6/6	0.91	0.20	40,70,79,82	0
4	GOL	H	602	6/6	0.94	0.27	36,60,70,72	0
2	CL	G	602	1/1	0.94	0.36	71,71,71,71	0
4	GOL	G	604	6/6	0.94	0.30	39,59,79,80	0
4	GOL	G	605	6/6	0.94	0.21	52,72,78,79	0
4	GOL	G	603	6/6	0.94	0.38	91,96,108,112	0
4	GOL	D	602	6/6	0.95	0.29	27,51,61,63	0
4	GOL	C	1001	6/6	0.96	0.51	31,48,69,80	0
2	CL	D	601	1/1	0.96	0.24	61,61,61,61	0
2	CL	G	601	1/1	0.96	0.18	64,64,64,64	0
2	CL	F	601	1/1	0.96	0.10	62,62,62,62	0
2	CL	H	601	1/1	0.98	0.10	55,55,55,55	0
2	CL	B	601	1/1	0.99	0.14	57,57,57,57	0

6.5 Other polymers [i](#)

There are no such residues in this entry.