



wwPDB X-ray Structure Validation Summary Report ⓘ

Aug 19, 2023 – 04:05 PM EDT

PDB ID : 2GJ6
Title : The complex between TCR A6 and human Class I MHC HLA-A2 with the modified HTLV-1 TAX (Y5K-4-[3-Indolyl]-butyric acid) peptide
Authors : Borbulevych, O.Y.; Baker, B.M.
Deposited on : 2006-03-30
Resolution : 2.56 Å (reported)

This is a wwPDB X-ray Structure Validation Summary Report for a publicly released PDB entry.

We welcome your comments at validation@mail.wwpdb.org

A user guide is available at

<https://www.wwpdb.org/validation/2017/XrayValidationReportHelp>

with specific help available everywhere you see the ⓘ symbol.

The types of validation reports are described at

<http://www.wwpdb.org/validation/2017/FAQs#types>.

The following versions of software and data (see [references ⓘ](#)) were used in the production of this report:

MolProbity : 4.02b-467
Mogul : 1.8.5 (274361), CSD as541be (2020)
Xtriage (Phenix) : 1.13
EDS : 2.35
Percentile statistics : 20191225.v01 (using entries in the PDB archive December 25th 2019)
Refmac : 5.8.0158
CCP4 : 7.0.044 (Gargrove)
Ideal geometry (proteins) : Engh & Huber (2001)
Ideal geometry (DNA, RNA) : Parkinson et al. (1996)
Validation Pipeline (wwPDB-VP) : 2.35

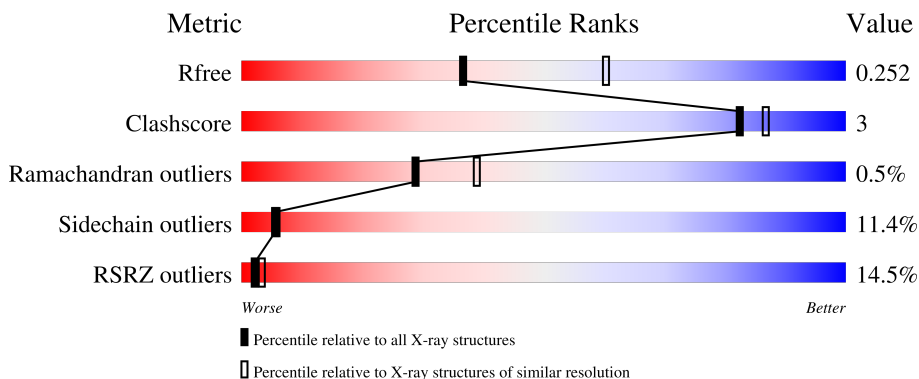
1 Overall quality at a glance

The following experimental techniques were used to determine the structure:

X-RAY DIFFRACTION

The reported resolution of this entry is 2.56 Å.

Percentile scores (ranging between 0-100) for global validation metrics of the entry are shown in the following graphic. The table shows the number of entries on which the scores are based.



Metric	Whole archive (#Entries)	Similar resolution (#Entries, resolution range(Å))
R_{free}	130704	1279 (2.58-2.54)
Clashscore	141614	1327 (2.58-2.54)
Ramachandran outliers	138981	1312 (2.58-2.54)
Sidechain outliers	138945	1312 (2.58-2.54)
RSRZ outliers	127900	1269 (2.58-2.54)

The table below summarises the geometric issues observed across the polymeric chains and their fit to the electron density. The red, orange, yellow and green segments of the lower bar indicate the fraction of residues that contain outliers for ≥ 3 , 2, 1 and 0 types of geometric quality criteria respectively. A grey segment represents the fraction of residues that are not modelled. The numeric value for each fraction is indicated below the corresponding segment, with a dot representing fractions $\leq 5\%$. The upper red bar (where present) indicates the fraction of residues that have poor fit to the electron density. The numeric value is given above the bar.

Mol	Chain	Length	Quality of chain
1	A	275	
2	B	100	
3	C	9	
4	D	200	
5	E	245	

2 Entry composition

There are 9 unique types of molecules in this entry. The entry contains 6831 atoms, of which 0 are hydrogens and 0 are deuteriums.

In the tables below, the ZeroOcc column contains the number of atoms modelled with zero occupancy, the AltConf column contains the number of residues with at least one atom in alternate conformation and the Trace column contains the number of residues modelled with at most 2 atoms.

- Molecule 1 is a protein called HLA class I histocompatibility antigen, A-2 alpha chain.

Mol	Chain	Residues	Atoms					ZeroOcc	AltConf	Trace
			Total	C	N	O	S			
1	A	275	2247	1403	409	426	9	0	0	0

- Molecule 2 is a protein called Beta-2-microglobulin, Contains: Beta-2-microglobulin variant pI 5.3.

Mol	Chain	Residues	Atoms					ZeroOcc	AltConf	Trace
			Total	C	N	O	S			
2	B	100	837	533	141	159	4	0	0	0

There is a discrepancy between the modelled and reference sequences:

Chain	Residue	Modelled	Actual	Comment	Reference
B	0	MET	-	cloning artifact	UNP P61769

- Molecule 3 is a protein called Modified HTLV-1 TAX (Y5K-IBA) peptide, chain C.

Mol	Chain	Residues	Atoms				ZeroOcc	AltConf	Trace
			Total	C	N	O			
3	C	9	74	53	10	11	0	0	0

- Molecule 4 is a protein called A6-Tcr.

Mol	Chain	Residues	Atoms					ZeroOcc	AltConf	Trace
			Total	C	N	O	S			
4	D	200	1552	965	255	325	7	0	0	0

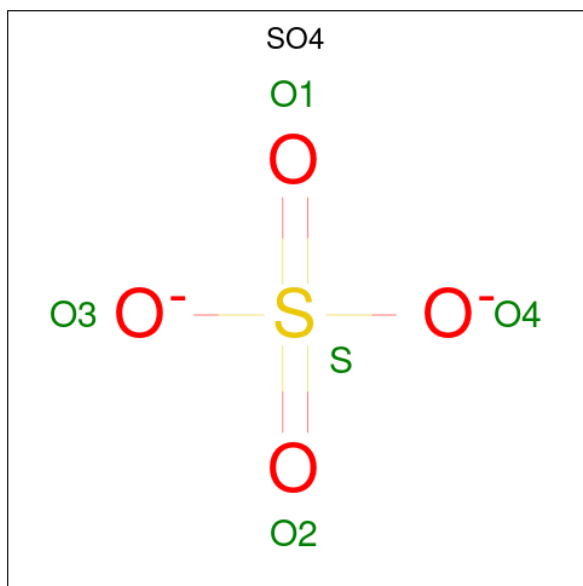
- Molecule 5 is a protein called A6-Tcr.

Mol	Chain	Residues	Atoms					ZeroOcc	AltConf	Trace
			Total	C	N	O	S			
5	E	243	1915	1202	336	369	8	0	0	0

There are 2 discrepancies between the modelled and reference sequences:

Chain	Residue	Modelled	Actual	Comment	Reference
E	1	ASN	-	cloning artifact	GB 6730544
E	2	ALA	-	cloning artifact	GB 6730544

- Molecule 6 is SULFATE ION (three-letter code: SO4) (formula: O₄S).



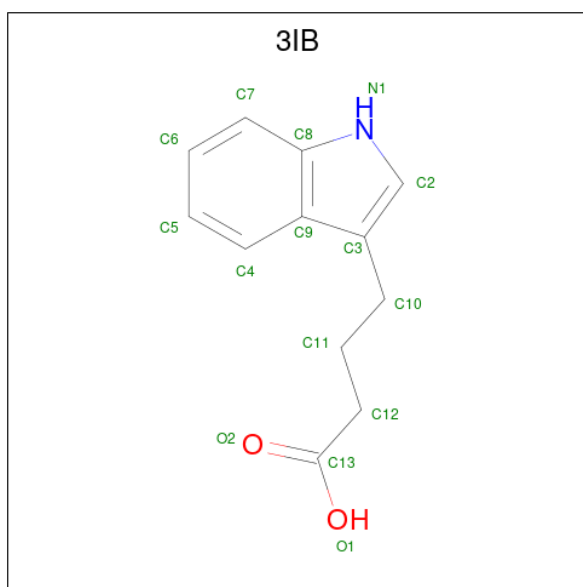
Mol	Chain	Residues	Atoms	ZeroOcc	AltConf
6	A	1	Total O S 5 4 1	0	0
6	A	1	Total O S 5 4 1	0	0
6	B	1	Total O S 5 4 1	0	0
6	E	1	Total O S 5 4 1	0	0
6	E	1	Total O S 5 4 1	0	0

- Molecule 7 is GLYCEROL (three-letter code: GOL) (formula: C₃H₈O₃).



Mol	Chain	Residues	Atoms	ZeroOcc	AltConf
7	A	1	Total C O 6 3 3	0	0
7	A	1	Total C O 6 3 3	0	0
7	B	1	Total C O 6 3 3	0	0
7	B	1	Total C O 6 3 3	0	0
7	B	1	Total C O 6 3 3	0	0
7	B	1	Total C O 6 3 3	0	0
7	B	1	Total C O 6 3 3	0	0
7	B	1	Total C O 6 3 3	0	0
7	B	1	Total C O 6 3 3	0	0
7	B	1	Total C O 6 3 3	0	0
7	B	1	Total C O 6 3 3	0	0
7	C	1	Total C O 6 3 3	0	0
7	E	1	Total C O 6 3 3	0	0
7	E	1	Total C O 6 3 3	0	0

- Molecule 8 is 3-INDOLEBUTYRIC ACID (three-letter code: 3IB) (formula: C₁₂H₁₃NO₂).



Mol	Chain	Residues	Atoms				ZeroOcc	AltConf
			Total	C	N	O		
8	C	1	14	12	1	1	0	0

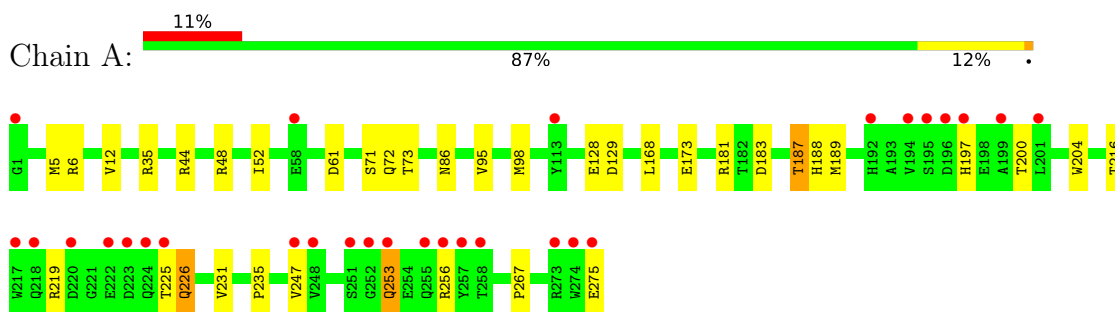
- Molecule 9 is water.

Mol	Chain	Residues	Atoms		ZeroOcc	AltConf
9	A	39	Total	O	0	0
			39	39		
9	B	19	Total	O	0	0
			19	19		
9	C	1	Total	O	0	0
			1	1		
9	D	14	Total	O	0	0
			14	14		
9	E	16	Total	O	0	0
			16	16		

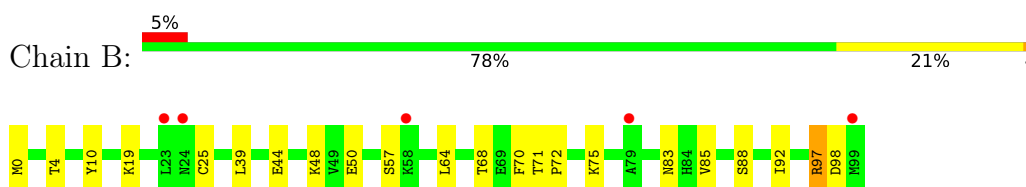
3 Residue-property plots [i](#)

These plots are drawn for all protein, RNA, DNA and oligosaccharide chains in the entry. The first graphic for a chain summarises the proportions of the various outlier classes displayed in the second graphic. The second graphic shows the sequence view annotated by issues in geometry and electron density. Residues are color-coded according to the number of geometric quality criteria for which they contain at least one outlier: green = 0, yellow = 1, orange = 2 and red = 3 or more. A red dot above a residue indicates a poor fit to the electron density ($RSRZ > 2$). Stretches of 2 or more consecutive residues without any outlier are shown as a green connector. Residues present in the sample, but not in the model, are shown in grey.

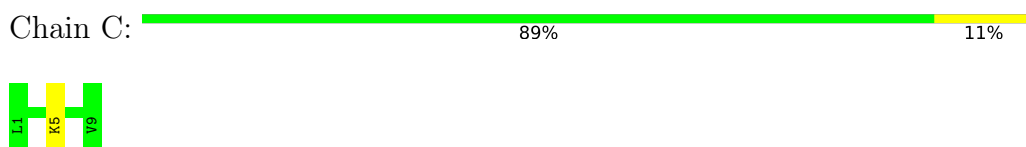
- Molecule 1: HLA class I histocompatibility antigen, A-2 alpha chain



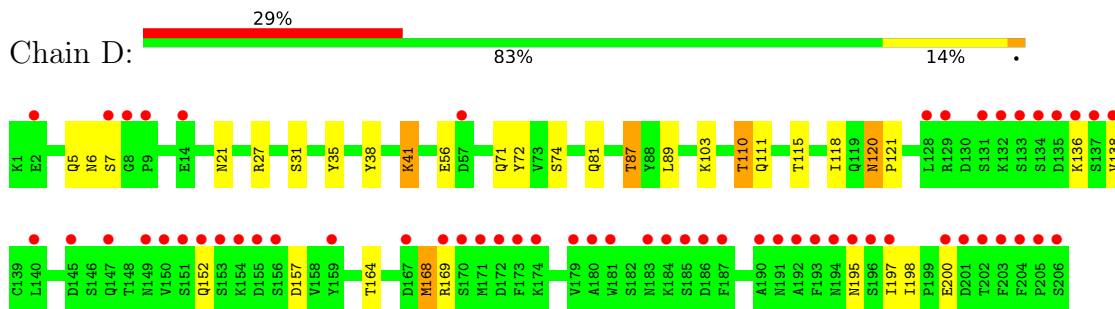
- Molecule 2: Beta-2-microglobulin, Contains: Beta-2-microglobulin variant pI 5.3




- Molecule 3: Modified HTLV-1 TAX (Y5K-IBA) peptide, chain C

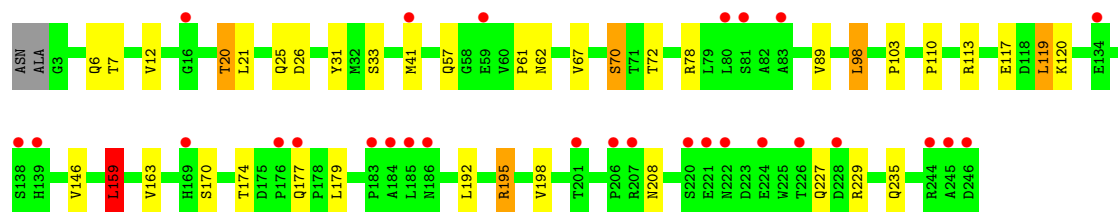


- Molecule 4: A6-Tcr



- Molecule 5: A6-Tcr

Chain E:  11% 83% 13% ..



4 Data and refinement statistics i

Property	Value	Source
Space group	C 1 2 1	Depositor
Cell constants a, b, c, α , β , γ	223.85Å 49.02Å 94.17Å 90.00° 90.34° 90.00°	Depositor
Resolution (Å)	20.00 – 2.56 19.32 – 2.56	Depositor EDS
% Data completeness (in resolution range)	95.7 (20.00-2.56) 95.7 (19.32-2.56)	Depositor EDS
R_{merge}	0.09	Depositor
R_{sym}	(Not available)	Depositor
$\langle I/\sigma(I) \rangle$ ¹	4.23 (at 2.56Å)	Xtrriage
Refinement program	REFMAC 5.2.0005	Depositor
R, R_{free}	0.199 , 0.250 0.203 , 0.252	Depositor DCC
R_{free} test set	1600 reflections (5.01%)	wwPDB-VP
Wilson B-factor (Å ²)	45.9	Xtrriage
Anisotropy	0.083	Xtrriage
Bulk solvent k_{sol} (e/Å ³), B_{sol} (Å ²)	0.34 , 57.7	EDS
L-test for twinning ²	$\langle L \rangle = 0.49$, $\langle L^2 \rangle = 0.33$	Xtrriage
Estimated twinning fraction	0.010 for -h,-k,l	Xtrriage
F_o, F_c correlation	0.93	EDS
Total number of atoms	6831	wwPDB-VP
Average B, all atoms (Å ²)	44.0	wwPDB-VP

Xtrriage's analysis on translational NCS is as follows: *The largest off-origin peak in the Patterson function is 4.70% of the height of the origin peak. No significant pseudotranslation is detected.*

¹Intensities estimated from amplitudes.

²Theoretical values of $\langle |L| \rangle$, $\langle L^2 \rangle$ for acentric reflections are 0.5, 0.333 respectively for untwinned datasets, and 0.375, 0.2 for perfectly twinned datasets.

5 Model quality i

5.1 Standard geometry i

Bond lengths and bond angles in the following residue types are not validated in this section: SO4, GOL, 3IB

The Z score for a bond length (or angle) is the number of standard deviations the observed value is removed from the expected value. A bond length (or angle) with $|Z| > 5$ is considered an outlier worth inspection. RMSZ is the root-mean-square of all Z scores of the bond lengths (or angles).

Mol	Chain	Bond lengths		Bond angles	
		RMSZ	# $ Z > 5$	RMSZ	# $ Z > 5$
1	A	0.72	3/2312 (0.1%)	0.81	1/3137 (0.0%)
2	B	0.69	0/860	0.82	1/1162 (0.1%)
3	C	0.86	0/76	0.96	0/101
4	D	0.58	1/1585 (0.1%)	0.74	0/2150
5	E	0.58	0/1968	0.81	4/2681 (0.1%)
All	All	0.65	4/6801 (0.1%)	0.80	6/9231 (0.1%)

Chiral center outliers are detected by calculating the chiral volume of a chiral center and verifying if the center is modelled as a planar moiety or with the opposite hand. A planarity outlier is detected by checking planarity of atoms in a peptide group, atoms in a mainchain group or atoms of a sidechain that are expected to be planar.

Mol	Chain	#Chirality outliers	#Planarity outliers
1	A	0	2

All (4) bond length outliers are listed below:

Mol	Chain	Res	Type	Atoms	Z	Observed(Å)	Ideal(Å)
1	A	253	GLN	CD-OE1	6.88	1.39	1.24
4	D	120	ASN	CG-ND2	6.35	1.48	1.32
1	A	226	GLN	CD-NE2	6.33	1.48	1.32
1	A	197	HIS	CG-CD2	6.05	1.46	1.35

The worst 5 of 6 bond angle outliers are listed below:

Mol	Chain	Res	Type	Atoms	Z	Observed(°)	Ideal(°)
5	E	159	LEU	CA-CB-CG	8.73	135.38	115.30
5	E	119	LEU	CA-CB-CG	5.53	128.03	115.30
1	A	129	ASP	CB-CG-OD1	5.27	123.04	118.30
5	E	21	LEU	CA-CB-CG	5.23	127.34	115.30

Continued on next page...

Continued from previous page...

Mol	Chain	Res	Type	Atoms	Z	Observed(°)	Ideal(°)
5	E	159	LEU	CB-CG-CD1	5.16	119.77	111.00

There are no chirality outliers.

All (2) planarity outliers are listed below:

Mol	Chain	Res	Type	Group
1	A	187	THR	Peptide
1	A	253	GLN	Sidechain

5.2 Too-close contacts [i](#)

In the following table, the Non-H and H(model) columns list the number of non-hydrogen atoms and hydrogen atoms in the chain respectively. The H(added) column lists the number of hydrogen atoms added and optimized by MolProbity. The Clashes column lists the number of clashes within the asymmetric unit, whereas Symm-Clashes lists symmetry-related clashes.

Mol	Chain	Non-H	H(model)	H(added)	Clashes	Symm-Clashes
1	A	2247	0	2096	6	0
2	B	837	0	803	6	0
3	C	74	0	81	0	0
4	D	1552	0	1461	10	0
5	E	1915	0	1818	14	0
6	A	10	0	0	0	0
6	B	5	0	0	0	0
6	E	10	0	0	1	0
7	A	12	0	16	0	0
7	B	48	0	64	1	0
7	C	6	0	8	0	0
7	E	12	0	16	1	0
8	C	14	0	12	1	0
9	A	39	0	0	0	0
9	B	19	0	0	1	0
9	C	1	0	0	0	0
9	D	14	0	0	0	0
9	E	16	0	0	0	0
All	All	6831	0	6375	33	0

The all-atom clashscore is defined as the number of clashes found per 1000 atoms (including hydrogen atoms). The all-atom clashscore for this structure is 3.

The worst 5 of 33 close contacts within the same asymmetric unit are listed below, sorted by their clash magnitude.

Atom-1	Atom-2	Interatomic distance (Å)	Clash overlap (Å)
4:D:164:THR:OG1	5:E:195:ARG:NH1	2.23	0.70
4:D:21:ASN:ND2	4:D:72:TYR:OH	2.31	0.64
4:D:38:TYR:HB2	4:D:41:LYS:HD2	1.80	0.62
5:E:159:LEU:HD23	5:E:192:LEU:HD23	1.91	0.51
1:A:5:MET:HB2	1:A:168:LEU:HD13	1.95	0.48

There are no symmetry-related clashes.

5.3 Torsion angles [i](#)

5.3.1 Protein backbone [i](#)

In the following table, the Percentiles column shows the percent Ramachandran outliers of the chain as a percentile score with respect to all X-ray entries followed by that with respect to entries of similar resolution.

The Analysed column shows the number of residues for which the backbone conformation was analysed, and the total number of residues.

Mol	Chain	Analysed	Favoured	Allowed	Outliers	Percentiles	
1	A	273/275 (99%)	259 (95%)	13 (5%)	1 (0%)	34	45
2	B	98/100 (98%)	95 (97%)	3 (3%)	0	100	100
3	C	7/9 (78%)	7 (100%)	0	0	100	100
4	D	198/200 (99%)	175 (88%)	20 (10%)	3 (2%)	10	13
5	E	241/245 (98%)	228 (95%)	13 (5%)	0	100	100
All	All	817/829 (99%)	764 (94%)	49 (6%)	4 (0%)	29	39

All (4) Ramachandran outliers are listed below:

Mol	Chain	Res	Type
4	D	7	SER
4	D	6	ASN
4	D	168	MET
1	A	267	PRO

5.3.2 Protein sidechains [i](#)

In the following table, the Percentiles column shows the percent sidechain outliers of the chain as a percentile score with respect to all X-ray entries followed by that with respect to entries of similar resolution.

The Analysed column shows the number of residues for which the sidechain conformation was analysed, and the total number of residues.

Mol	Chain	Analysed	Rotameric	Outliers	Percentiles	
1	A	231/231 (100%)	207 (90%)	24 (10%)	7	7
2	B	95/95 (100%)	82 (86%)	13 (14%)	3	3
3	C	8/8 (100%)	7 (88%)	1 (12%)	4	4
4	D	178/178 (100%)	157 (88%)	21 (12%)	5	5
5	E	208/209 (100%)	185 (89%)	23 (11%)	6	6
All	All	720/721 (100%)	638 (89%)	82 (11%)	5	6

5 of 82 residues with a non-rotameric sidechain are listed below:

Mol	Chain	Res	Type
4	D	198	ILE
5	E	98	LEU
5	E	7	THR
5	E	33	SER
5	E	163	VAL

Sometimes sidechains can be flipped to improve hydrogen bonding and reduce clashes. 5 of 15 such sidechains are listed below:

Mol	Chain	Res	Type
4	D	37	GLN
5	E	57	GLN
4	D	65	GLN
5	E	62	ASN
4	D	176	ASN

5.3.3 RNA [i](#)

There are no RNA molecules in this entry.

5.4 Non-standard residues in protein, DNA, RNA chains [i](#)

There are no non-standard protein/DNA/RNA residues in this entry.

5.5 Carbohydrates [i](#)

There are no monosaccharides in this entry.

5.6 Ligand geometry

19 ligands are modelled in this entry.

In the following table, the Counts columns list the number of bonds (or angles) for which Mogul statistics could be retrieved, the number of bonds (or angles) that are observed in the model and the number of bonds (or angles) that are defined in the Chemical Component Dictionary. The Link column lists molecule types, if any, to which the group is linked. The Z score for a bond length (or angle) is the number of standard deviations the observed value is removed from the expected value. A bond length (or angle) with $|Z| > 2$ is considered an outlier worth inspection. RMSZ is the root-mean-square of all Z scores of the bond lengths (or angles).

Mol	Type	Chain	Res	Link	Bond lengths			Bond angles		
					Counts	RMSZ	# Z > 2	Counts	RMSZ	# Z > 2
8	3IB	C	10	3	14,15,16	1.54	2 (14%)	14,19,21	1.26	2 (14%)
7	GOL	B	412	-	5,5,5	0.37	0	5,5,5	0.72	0
6	SO4	E	414	-	4,4,4	0.06	0	6,6,6	0.37	0
6	SO4	A	418	-	4,4,4	0.11	0	6,6,6	0.39	0
6	SO4	A	416	-	4,4,4	0.18	0	6,6,6	0.22	0
7	GOL	C	405	-	5,5,5	0.38	0	5,5,5	0.48	0
7	GOL	E	404	-	5,5,5	0.43	0	5,5,5	0.44	0
7	GOL	B	407	-	5,5,5	0.50	0	5,5,5	0.46	0
7	GOL	B	406	-	5,5,5	0.33	0	5,5,5	0.67	0
7	GOL	A	402	-	5,5,5	0.58	0	5,5,5	1.82	1 (20%)
7	GOL	B	403	-	5,5,5	0.43	0	5,5,5	0.90	0
7	GOL	E	410	-	5,5,5	0.33	0	5,5,5	0.51	0
7	GOL	B	408	-	5,5,5	0.46	0	5,5,5	1.11	0
7	GOL	B	401	-	5,5,5	0.33	0	5,5,5	0.61	0
7	GOL	A	413	-	5,5,5	0.30	0	5,5,5	0.53	0
6	SO4	B	417	-	4,4,4	0.16	0	6,6,6	0.20	0
7	GOL	B	411	-	5,5,5	0.32	0	5,5,5	1.13	0
7	GOL	B	409	-	5,5,5	0.36	0	5,5,5	0.93	0
6	SO4	E	415	-	4,4,4	0.19	0	6,6,6	0.37	0

In the following table, the Chirals column lists the number of chiral outliers, the number of chiral centers analysed, the number of these observed in the model and the number defined in the Chemical Component Dictionary. Similar counts are reported in the Torsion and Rings columns. '-' means no outliers of that kind were identified.

Mol	Type	Chain	Res	Link	Chirals	Torsions	Rings
8	3IB	C	10	3	-	0/5/5/6	0/2/2/2
7	GOL	B	408	-	-	4/4/4/4	-
7	GOL	B	412	-	-	2/4/4/4	-
7	GOL	B	411	-	-	0/4/4/4	-

Continued on next page...

Continued from previous page...

Mol	Type	Chain	Res	Link	Chirals	Torsions	Rings
7	GOL	A	402	-	-	2/4/4/4	-
7	GOL	C	405	-	-	4/4/4/4	-
7	GOL	E	404	-	-	4/4/4/4	-
7	GOL	B	403	-	-	2/4/4/4	-
7	GOL	B	407	-	-	2/4/4/4	-
7	GOL	B	406	-	-	0/4/4/4	-
7	GOL	B	401	-	-	4/4/4/4	-
7	GOL	E	410	-	-	4/4/4/4	-
7	GOL	B	409	-	-	4/4/4/4	-
7	GOL	A	413	-	-	4/4/4/4	-

All (2) bond length outliers are listed below:

Mol	Chain	Res	Type	Atoms	Z	Observed(Å)	Ideal(Å)
8	C	10	3IB	O1-C13	-4.04	1.21	1.42
8	C	10	3IB	C7-C8	-2.09	1.38	1.41

All (3) bond angle outliers are listed below:

Mol	Chain	Res	Type	Atoms	Z	Observed(°)	Ideal(°)
7	A	402	GOL	O3-C3-C2	-3.05	95.57	110.20
8	C	10	3IB	C4-C9-C8	3.01	122.16	118.17
8	C	10	3IB	C5-C4-C9	-2.23	117.80	120.89

There are no chirality outliers.

5 of 36 torsion outliers are listed below:

Mol	Chain	Res	Type	Atoms
7	A	402	GOL	O1-C1-C2-C3
7	A	413	GOL	C1-C2-C3-O3
7	B	407	GOL	O1-C1-C2-C3
7	B	408	GOL	O1-C1-C2-C3
7	B	408	GOL	C1-C2-C3-O3

There are no ring outliers.

4 monomers are involved in 4 short contacts:

Mol	Chain	Res	Type	Clashes	Symm-Clashes
8	C	10	3IB	1	0

Continued on next page...

Continued from previous page...

Mol	Chain	Res	Type	Clashes	Symm-Clashes
6	E	414	SO4	1	0
7	E	410	GOL	1	0
7	B	411	GOL	1	0

5.7 Other polymers [i](#)

There are no such residues in this entry.

5.8 Polymer linkage issues [i](#)

There are no chain breaks in this entry.

6 Fit of model and data [i](#)

6.1 Protein, DNA and RNA chains [i](#)

In the following table, the column labelled '#RSRZ > 2' contains the number (and percentage) of RSRZ outliers, followed by percent RSRZ outliers for the chain as percentile scores relative to all X-ray entries and entries of similar resolution. The OWAB column contains the minimum, median, 95th percentile and maximum values of the occupancy-weighted average B-factor per residue. The column labelled 'Q < 0.9' lists the number of (and percentage) of residues with an average occupancy less than 0.9.

Mol	Chain	Analysed	<RSRZ>	#RSRZ>2	OWAB(Å ²)	Q<0.9
1	A	275/275 (100%)	0.65	29 (10%) 6 9	36, 45, 53, 58	0
2	B	100/100 (100%)	0.29	5 (5%) 28 36	36, 45, 54, 62	0
3	C	9/9 (100%)	0.08	0 100 100	39, 43, 45, 46	0
4	D	200/200 (100%)	1.53	58 (29%) 0 0	32, 43, 50, 66	0
5	E	243/245 (99%)	0.75	28 (11%) 4 7	26, 43, 53, 56	0
All	All	827/829 (99%)	0.84	120 (14%) 2 3	26, 44, 53, 66	0

The worst 5 of 120 RSRZ outliers are listed below:

Mol	Chain	Res	Type	RSRZ
4	D	133	SER	10.1
4	D	171	MET	9.7
4	D	206	SER	8.2
5	E	245	ALA	8.1
4	D	135	ASP	6.9

6.2 Non-standard residues in protein, DNA, RNA chains [i](#)

There are no non-standard protein/DNA/RNA residues in this entry.

6.3 Carbohydrates [i](#)

There are no monosaccharides in this entry.

6.4 Ligands [i](#)

In the following table, the Atoms column lists the number of modelled atoms in the group and the number defined in the chemical component dictionary. The B-factors column lists the minimum,

median, 95th percentile and maximum values of B factors of atoms in the group. The column labelled 'Q< 0.9' lists the number of atoms with occupancy less than 0.9.

Mol	Type	Chain	Res	Atoms	RSCC	RSR	B-factors(Å ²)	Q<0.9
7	GOL	E	410	6/6	0.68	0.38	42,44,44,47	6
7	GOL	A	413	6/6	0.80	0.25	45,46,47,49	6
7	GOL	B	407	6/6	0.86	0.21	38,40,41,42	6
7	GOL	B	412	6/6	0.86	0.28	31,37,37,40	6
7	GOL	B	406	6/6	0.86	0.20	38,40,40,40	6
7	GOL	B	401	6/6	0.87	0.24	37,38,39,40	6
7	GOL	E	404	6/6	0.87	0.18	40,42,43,43	6
7	GOL	B	403	6/6	0.87	0.26	57,60,61,63	0
7	GOL	B	408	6/6	0.89	0.32	54,55,57,57	0
6	SO4	A	418	5/5	0.90	0.24	44,44,45,46	5
7	GOL	C	405	6/6	0.90	0.22	33,38,38,39	6
7	GOL	B	411	6/6	0.91	0.17	50,54,56,62	0
6	SO4	B	417	5/5	0.93	0.38	42,42,44,44	5
7	GOL	B	409	6/6	0.94	0.12	46,48,48,49	6
6	SO4	A	416	5/5	0.94	0.32	40,41,42,42	5
7	GOL	A	402	6/6	0.94	0.14	30,40,42,45	0
6	SO4	E	415	5/5	0.96	0.24	37,38,39,39	5
8	3IB	C	10	14/15	0.98	0.08	30,32,35,38	0
6	SO4	E	414	5/5	0.99	0.24	48,48,49,51	0

6.5 Other polymers [\(i\)](#)

There are no such residues in this entry.