



Full wwPDB X-ray Structure Validation Report ⓘ

Aug 20, 2023 – 12:36 AM EDT

PDB ID : 2G6K
Title : Structure of rat nNOS heme domain (BH4 bound) complexed with NO
Authors : Li, H.; Igarashi, J.; Jamal, J.; Yang, W.; Poulos, T.L.
Deposited on : 2006-02-24
Resolution : 2.00 Å(reported)

This is a Full wwPDB X-ray Structure Validation Report for a publicly released PDB entry.

We welcome your comments at validation@mail.wwpdb.org

A user guide is available at

<https://www.wwpdb.org/validation/2017/XrayValidationReportHelp>

with specific help available everywhere you see the ⓘ symbol.

The types of validation reports are described at

<http://www.wwpdb.org/validation/2017/FAQs#types>.

The following versions of software and data (see [references ⓘ](#)) were used in the production of this report:

MolProbity : 4.02b-467
Mogul : 1.8.5 (274361), CSD as541be (2020)
Xtriage (Phenix) : 1.13
EDS : 2.35
buster-report : 1.1.7 (2018)
Percentile statistics : 20191225.v01 (using entries in the PDB archive December 25th 2019)
Refmac : 5.8.0158
CCP4 : 7.0.044 (Gargrove)
Ideal geometry (proteins) : Engh & Huber (2001)
Ideal geometry (DNA, RNA) : Parkinson et al. (1996)
Validation Pipeline (wwPDB-VP) : 2.35

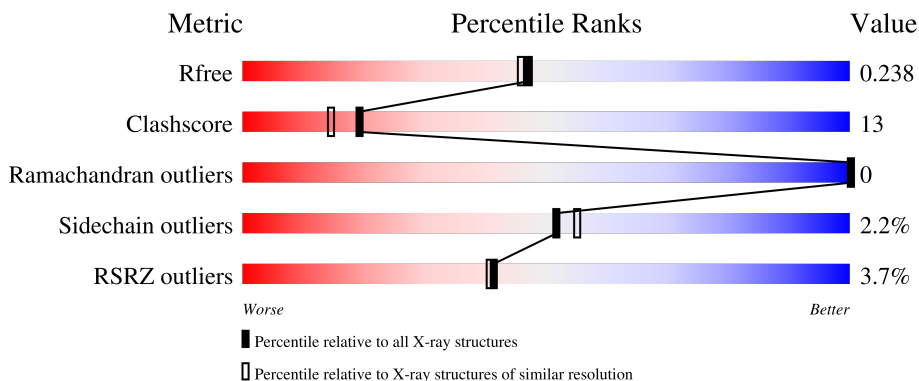
1 Overall quality at a glance

The following experimental techniques were used to determine the structure:

X-RAY DIFFRACTION


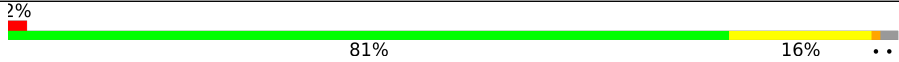
The reported resolution of this entry is 2.00 Å.

Percentile scores (ranging between 0-100) for global validation metrics of the entry are shown in the following graphic. The table shows the number of entries on which the scores are based.



Metric	Whole archive (#Entries)	Similar resolution (#Entries, resolution range(Å))
R_{free}	130704	8085 (2.00-2.00)
Clashscore	141614	9178 (2.00-2.00)
Ramachandran outliers	138981	9054 (2.00-2.00)
Sidechain outliers	138945	9053 (2.00-2.00)
RSRZ outliers	127900	7900 (2.00-2.00)

The table below summarises the geometric issues observed across the polymeric chains and their fit to the electron density. The red, orange, yellow and green segments of the lower bar indicate the fraction of residues that contain outliers for ≥ 3 , 2, 1 and 0 types of geometric quality criteria respectively. A grey segment represents the fraction of residues that are not modelled. The numeric value for each fraction is indicated below the corresponding segment, with a dot representing fractions $\leq 5\%$. The upper red bar (where present) indicates the fraction of residues that have poor fit to the electron density. The numeric value is given above the bar.

Mol	Chain	Length	Quality of chain
1	A	420	
1	B	420	

The following table lists non-polymeric compounds, carbohydrate monomers and non-standard residues in protein, DNA, RNA chains that are outliers for geometric or electron-density-fit criteria:

Mol	Type	Chain	Res	Chirality	Geometry	Clashes	Electron density
2	ACT	B	861	-	-	X	-

2 Entry composition [i](#)

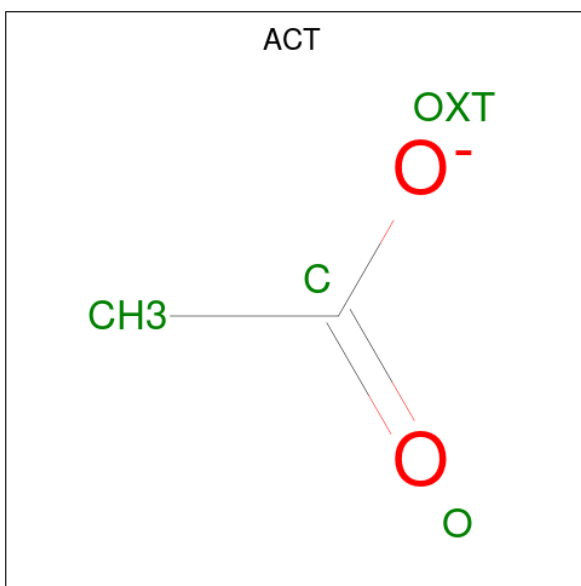
There are 8 unique types of molecules in this entry. The entry contains 7212 atoms, of which 0 are hydrogens and 0 are deuteriums.

In the tables below, the ZeroOcc column contains the number of atoms modelled with zero occupancy, the AltConf column contains the number of residues with at least one atom in alternate conformation and the Trace column contains the number of residues modelled with at most 2 atoms.

- Molecule 1 is a protein called Nitric-oxide synthase, brain.

Mol	Chain	Residues	Atoms					ZeroOcc	AltConf	Trace
			Total	C	N	O	S			
1	A	409	Total 3331	C 2132	N 571	O 607	S 21	0	0	0
1	B	411	Total 3345	C 2140	N 574	O 610	S 21	0	0	0

- Molecule 2 is ACETATE ION (three-letter code: ACT) (formula: C₂H₃O₂).

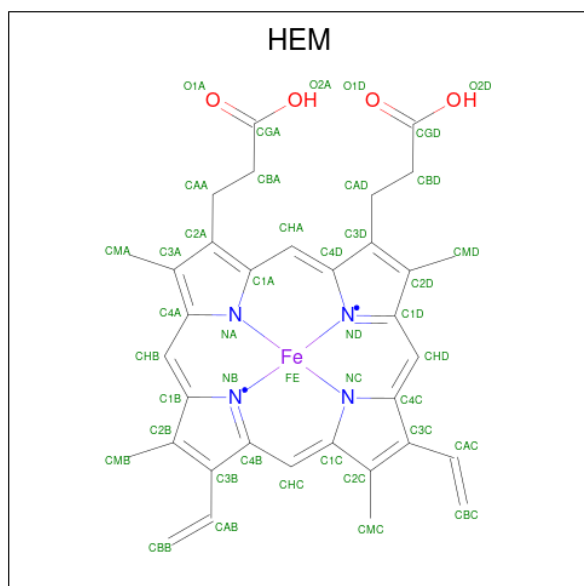


Mol	Chain	Residues	Atoms			ZeroOcc	AltConf
			Total	C	O		
2	A	1	Total 4	C 2	O 2	0	0
2	B	1	Total 4	C 2	O 2	0	0

- Molecule 3 is ZINC ION (three-letter code: ZN) (formula: Zn).

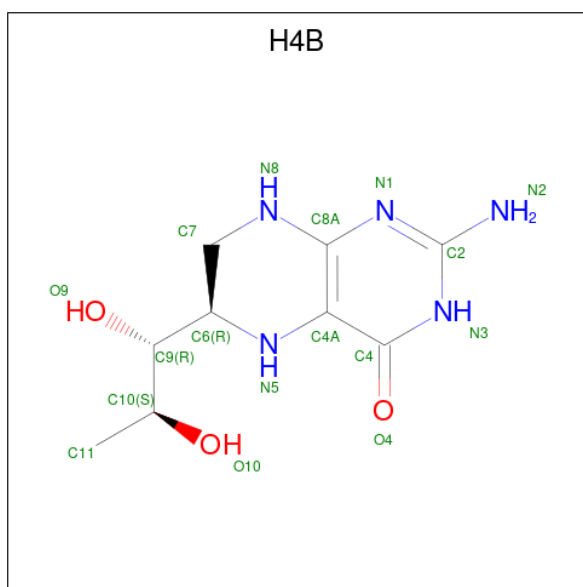
Mol	Chain	Residues	Atoms	ZeroOcc	AltConf
3	A	1	Total Zn 1 1	0	0

- Molecule 4 is PROTOPORPHYRIN IX CONTAINING FE (three-letter code: HEM) (formula: $C_{34}H_{32}FeN_4O_4$).



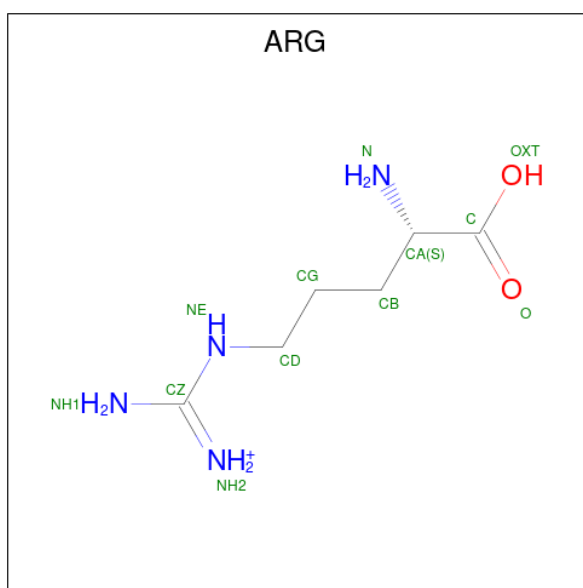
Mol	Chain	Residues	Atoms	ZeroOcc	AltConf
4	A	1	Total C Fe N O 43 34 1 4 4	0	0
4	B	1	Total C Fe N O 43 34 1 4 4	0	0

- Molecule 5 is 5,6,7,8-TETRAHYDROBIOPTERIN (three-letter code: H4B) (formula: $C_9H_{15}N_5O_3$).



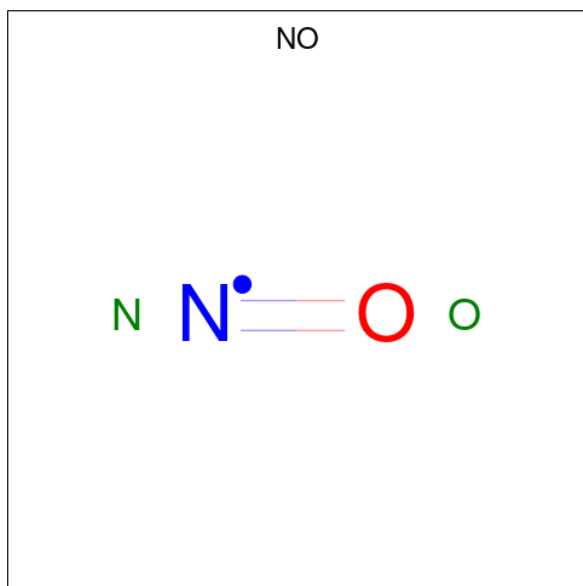
Mol	Chain	Residues	Atoms				ZeroOcc	AltConf
5	A	1	Total	C	N	O	0	0
			17	9	5	3		
5	B	1	Total	C	N	O	0	0
			17	9	5	3		

- Molecule 6 is ARGinine (three-letter code: ARG) (formula: $C_6H_{15}N_4O_2$).



Mol	Chain	Residues	Atoms				ZeroOcc	AltConf
6	A	1	Total	C	N	O	0	0
			12	6	4	2		
6	B	1	Total	C	N	O	0	0
			12	6	4	2		

- Molecule 7 is NITRIC OXIDE (three-letter code: NO) (formula: NO).



Mol	Chain	Residues	Atoms			ZeroOcc	AltConf
7	A	1	Total	N	O	0	0
			2	1	1		
7	B	1	Total	N	O	0	0
			2	1	1		

- Molecule 8 is water.

Mol	Chain	Residues	Atoms		ZeroOcc	AltConf
8	A	154	Total	O	0	0
			154	154		
8	B	225	Total	O	0	0
			225	225		

4 Data and refinement statistics

Property	Value	Source
Space group	P 21 21 21	Depositor
Cell constants a, b, c, α , β , γ	51.97Å 111.24Å 164.15Å 90.00° 90.00° 90.00°	Depositor
Resolution (Å)	49.10 – 2.00 49.10 – 2.00	Depositor EDS
% Data completeness (in resolution range)	95.5 (49.10-2.00) 95.6 (49.10-2.00)	Depositor EDS
R_{merge}	0.05	Depositor
R_{sym}	0.05	Depositor
$\langle I/\sigma(I) \rangle$ ¹	2.36 (at 2.00Å)	Xtrriage
Refinement program	CNS 1.1	Depositor
R, R_{free}	0.212 , 0.248 0.205 , 0.238	Depositor DCC
R_{free} test set	3089 reflections (4.97%)	wwPDB-VP
Wilson B-factor (Å ²)	31.8	Xtrriage
Anisotropy	0.759	Xtrriage
Bulk solvent k_{sol} (e/Å ³), B_{sol} (Å ²)	0.37 , 51.3	EDS
L-test for twinning ²	$\langle L \rangle = 0.49$, $\langle L^2 \rangle = 0.33$	Xtrriage
Estimated twinning fraction	No twinning to report.	Xtrriage
F_o, F_c correlation	0.96	EDS
Total number of atoms	7212	wwPDB-VP
Average B, all atoms (Å ²)	46.0	wwPDB-VP

Xtrriage's analysis on translational NCS is as follows: *The largest off-origin peak in the Patterson function is 4.28% of the height of the origin peak. No significant pseudotranslation is detected.*

¹Intensities estimated from amplitudes.

²Theoretical values of $\langle |L| \rangle$, $\langle L^2 \rangle$ for acentric reflections are 0.5, 0.333 respectively for untwinned datasets, and 0.375, 0.2 for perfectly twinned datasets.

5 Model quality [i](#)

5.1 Standard geometry [i](#)

Bond lengths and bond angles in the following residue types are not validated in this section: ACT, ZN, H4B, HEM, NO

The Z score for a bond length (or angle) is the number of standard deviations the observed value is removed from the expected value. A bond length (or angle) with $|Z| > 5$ is considered an outlier worth inspection. RMSZ is the root-mean-square of all Z scores of the bond lengths (or angles).

Mol	Chain	Bond lengths		Bond angles	
		RMSZ	# Z >5	RMSZ	# Z >5
1	A	0.43	0/3424	0.65	1/4645 (0.0%)
1	B	0.46	0/3438	0.67	2/4661 (0.0%)
All	All	0.44	0/6862	0.66	3/9306 (0.0%)

There are no bond length outliers.

All (3) bond angle outliers are listed below:

Mol	Chain	Res	Type	Atoms	Z	Observed(°)	Ideal(°)
1	B	326	CYS	CA-CB-SG	6.69	126.03	114.00
1	B	589	MET	N-CA-C	-6.16	94.38	111.00
1	A	589	MET	N-CA-C	-5.99	94.82	111.00

There are no chirality outliers.

There are no planarity outliers.

5.2 Too-close contacts [i](#)

In the following table, the Non-H and H(model) columns list the number of non-hydrogen atoms and hydrogen atoms in the chain respectively. The H(added) column lists the number of hydrogen atoms added and optimized by MolProbity. The Clashes column lists the number of clashes within the asymmetric unit, whereas Symm-Clashes lists symmetry-related clashes.

Mol	Chain	Non-H	H(model)	H(added)	Clashes	Symm-Clashes
1	A	3331	0	3243	122	0
1	B	3345	0	3259	55	0
2	A	4	0	3	1	0
2	B	4	0	3	2	0
3	A	1	0	0	0	0
4	A	43	0	30	3	0

Continued on next page...

Continued from previous page...

Mol	Chain	Non-H	H(model)	H(added)	Clashes	Symm-Clashes
4	B	43	0	30	3	0
5	A	17	0	15	1	0
5	B	17	0	15	0	0
6	A	12	0	12	0	0
6	B	12	0	12	0	0
7	A	2	0	0	0	0
7	B	2	0	0	0	0
8	A	154	0	0	15	0
8	B	225	0	0	5	0
All	All	7212	0	6622	174	0

The all-atom clashscore is defined as the number of clashes found per 1000 atoms (including hydrogen atoms). The all-atom clashscore for this structure is 13.

All (174) close contacts within the same asymmetric unit are listed below, sorted by their clash magnitude.

Atom-1	Atom-2	Interatomic distance (Å)	Clash overlap (Å)
1:A:523:LEU:HD22	1:A:531:PRO:HB2	1.42	0.98
1:A:467:ASP:OD2	1:A:469:LYS:HB2	1.80	0.80
1:A:701:THR:HG22	1:A:702:PRO:HA	1.62	0.80
1:A:574:ILE:HG22	8:A:1008:HOH:O	1.82	0.79
1:A:555:LYS:NZ	1:A:555:LYS:HB3	1.98	0.78
1:A:371:ARG:HH21	1:A:371:ARG:HG3	1.50	0.76
1:A:523:LEU:CD2	1:A:531:PRO:HB2	2.17	0.75
1:A:350:THR:OG1	1:A:353:GLN:HG3	1.88	0.74
1:A:552:ASP:HB3	8:A:1026:HOH:O	1.87	0.74
1:A:322:LEU:HB2	1:A:699:ARG:HB2	1.70	0.73
4:A:750:HEM:HMC2	4:A:750:HEM:HBC2	1.73	0.71
1:A:499:VAL:O	1:A:503:GLU:HG3	1.91	0.70
1:B:299:ARG:HD2	8:B:1041:HOH:O	1.93	0.68
1:A:545:PRO:HG2	1:A:547:ARG:NH2	2.08	0.68
1:A:322:LEU:HD13	1:A:699:ARG:NH2	2.08	0.68
1:A:478:GLN:HB2	1:A:481:ARG:HG3	1.75	0.67
1:A:473:ARG:NH2	1:A:710:PRO:HD3	2.09	0.67
1:A:555:LYS:HB3	1:A:555:LYS:HZ3	1.60	0.66
1:A:322:LEU:CB	1:A:699:ARG:HE	2.09	0.65
1:A:420:GLN:OE1	1:A:423:LYS:HE2	1.96	0.65
1:A:330:ILE:HD11	1:B:696:LEU:HD22	1.77	0.65
1:A:605:ASN:ND2	8:A:1060:HOH:O	2.24	0.65
1:A:321:THR:HG23	1:A:322:LEU:HG	1.79	0.65
1:B:356:PRO:O	1:B:360:GLU:HG3	1.97	0.65

Continued on next page...

Continued from previous page...

Atom-1	Atom-2	Interatomic distance (Å)	Clash overlap (Å)
1:A:508:GLN:NE2	1:A:508:GLN:HA	2.12	0.64
1:A:624:LEU:HD12	1:B:635:ILE:HG13	1.79	0.64
1:A:322:LEU:HB2	1:A:699:ARG:HE	1.62	0.64
1:A:374:SER:O	1:A:378:MET:HG2	1.97	0.64
1:A:696:LEU:HD22	1:B:330:ILE:HD11	1.79	0.64
1:B:699:ARG:HG2	8:B:1031:HOH:O	1.98	0.63
1:B:684:SER:HB3	1:B:687:ILE:HG12	1.80	0.63
1:A:475:TRP:HB2	1:A:523:LEU:HB3	1.83	0.61
1:A:701:THR:HG21	8:A:1015:HOH:O	2.00	0.61
1:B:323:GLU:O	1:B:699:ARG:HD3	2.01	0.60
1:A:496:PRO:HA	1:A:499:VAL:HG23	1.83	0.60
1:A:517:PHE:HB2	1:A:560:LYS:HE2	1.83	0.60
1:A:551:PHE:HB3	1:A:553:TRP:NE1	2.17	0.59
4:B:750:HEM:HMC1	4:B:750:HEM:HBC2	1.85	0.58
1:A:436:HIS:HB2	8:A:976:HOH:O	2.03	0.58
1:B:350:THR:O	1:B:353:GLN:HG2	2.04	0.57
1:A:508:GLN:HA	1:A:508:GLN:HE21	1.69	0.57
1:A:546:ILE:HG12	1:A:560:LYS:HA	1.86	0.57
1:A:478:GLN:HB2	1:A:481:ARG:CG	2.35	0.57
1:A:498:ASN:HA	8:A:968:HOH:O	2.03	0.57
1:B:299:ARG:HB3	1:B:299:ARG:NH1	2.20	0.56
1:B:299:ARG:HB3	1:B:299:ARG:HH11	1.70	0.56
1:A:308:THR:O	1:A:309:ASP:HB2	2.05	0.56
1:B:684:SER:HB3	1:B:687:ILE:CG1	2.36	0.56
1:A:545:PRO:HG2	1:A:547:ARG:HH21	1.71	0.56
1:B:391:THR:O	1:B:392:SER:HB2	2.04	0.56
1:A:380:ARG:HD3	1:A:400:GLU:OE1	2.06	0.56
1:B:388:ILE:O	1:B:392:SER:N	2.37	0.56
1:B:322:LEU:HB2	1:B:699:ARG:HB2	1.88	0.55
1:A:505:CYS:O	1:A:508:GLN:HB2	2.06	0.55
1:A:393:THR:OG1	1:A:394:TYR:N	2.40	0.55
1:A:699:ARG:HD2	8:A:1031:HOH:O	2.07	0.55
1:A:387:GLU:O	1:A:391:THR:OG1	2.23	0.55
1:A:694:GLU:HB3	1:B:335:ILE:HD13	1.90	0.54
1:A:684:SER:HB3	1:A:687:ILE:HG12	1.90	0.53
1:A:508:GLN:HE21	1:A:508:GLN:CA	2.19	0.53
1:A:523:LEU:HD22	1:A:531:PRO:CB	2.27	0.53
1:A:371:ARG:HH21	1:A:371:ARG:CG	2.20	0.52
1:A:359:LYS:HG2	1:A:363:ASP:OD2	2.10	0.52
1:A:684:SER:HB3	1:A:687:ILE:CG1	2.39	0.52
1:A:463:PRO:HB2	1:A:472:PHE:CE1	2.45	0.51

Continued on next page...

Continued from previous page...

Atom-1	Atom-2	Interatomic distance (Å)	Clash overlap (Å)
1:A:349:ARG:HA	1:A:353:GLN:OE1	2.11	0.51
1:A:551:PHE:HB3	1:A:553:TRP:CE2	2.46	0.51
1:B:485:TYR:CE1	1:B:514:ARG:HA	2.46	0.51
4:B:750:HEM:HBC2	4:B:750:HEM:CMC	2.41	0.51
1:A:380:ARG:O	1:A:384:VAL:HG23	2.11	0.50
1:B:415:CYS:HB2	4:B:750:HEM:ND	2.26	0.50
1:A:371:ARG:HG3	1:A:371:ARG:NH2	2.25	0.50
1:B:513:PRO:HG2	1:B:518:ASP:CG	2.31	0.50
1:A:322:LEU:HD13	1:A:699:ARG:HH21	1.75	0.50
1:A:355:PHE:N	1:A:356:PRO:HD2	2.26	0.50
1:B:504:ILE:O	1:B:508:GLN:HG2	2.12	0.50
1:A:494:GLY:O	1:A:496:PRO:HD3	2.11	0.50
1:A:548:HIS:HB2	1:A:554:PHE:CG	2.47	0.49
1:A:506:ILE:C	1:A:508:GLN:H	2.14	0.49
1:B:351:LYS:HE2	1:B:392:SER:HA	1.95	0.49
1:A:569:ASN:ND2	1:A:569:ASN:H	2.09	0.49
1:B:675:ASP:O	1:B:679:ILE:HG12	2.12	0.49
1:A:322:LEU:HB3	1:A:699:ARG:HH21	1.78	0.49
1:B:420:GLN:HG2	2:B:861:ACT:H2	1.95	0.48
1:A:506:ILE:C	1:A:508:GLN:N	2.65	0.48
1:A:551:PHE:CD2	1:A:551:PHE:N	2.79	0.48
1:B:565:PRO:HB3	1:B:588:TYR:CZ	2.49	0.48
1:A:548:HIS:ND1	1:A:549:PRO:HD2	2.29	0.47
1:A:361:PHE:O	1:A:364:GLN:HG2	2.13	0.47
1:A:484:GLY:O	1:A:499:VAL:HA	2.15	0.47
1:A:659:ILE:O	1:A:663:GLU:HG3	2.15	0.47
1:A:524:LEU:O	1:A:531:PRO:HA	2.15	0.47
1:A:551:PHE:O	1:A:554:PHE:HB2	2.14	0.47
1:A:382:GLU:HG3	1:A:386:LYS:HE3	1.96	0.47
1:A:489:ASP:OD2	1:A:489:ASP:O	2.31	0.47
1:A:566:ALA:HB2	1:A:585:SER:HB3	1.97	0.47
1:B:420:GLN:CG	2:B:861:ACT:H2	2.44	0.47
1:B:403:TYR:CE1	1:B:407:HIS:CE1	3.03	0.47
1:A:554:PHE:HB3	8:A:999:HOH:O	2.14	0.46
1:A:678:TRP:HA	5:A:760:H4B:N1	2.30	0.46
1:B:322:LEU:HD13	1:B:699:ARG:HH21	1.81	0.46
1:B:364:GLN:NE2	8:B:1107:HOH:O	2.48	0.46
1:B:464:GLN:HB3	1:B:579:PHE:CE2	2.51	0.46
1:B:485:TYR:CZ	1:B:514:ARG:HA	2.51	0.46
1:A:481:ARG:NE	8:A:1052:HOH:O	2.29	0.45
1:B:353:GLN:HE21	1:B:353:GLN:HB3	1.59	0.45

Continued on next page...

Continued from previous page...

Atom-1	Atom-2	Interatomic distance (Å)	Clash overlap (Å)
1:A:480:ILE:HA	8:A:1051:HOH:O	2.16	0.45
1:B:589:MET:HA	1:B:649:VAL:O	2.16	0.45
1:A:464:GLN:NE2	1:A:577:LEU:HD22	2.32	0.45
1:A:514:ARG:HH21	1:A:514:ARG:HG3	1.82	0.45
1:B:420:GLN:HB3	8:B:1023:HOH:O	2.16	0.45
1:A:701:THR:CG2	1:A:702:PRO:HA	2.38	0.45
1:A:715:VAL:O	1:A:715:VAL:HG23	2.17	0.45
1:A:610:VAL:O	1:A:614:MET:HG3	2.17	0.45
1:B:355:PHE:N	1:B:356:PRO:HD2	2.32	0.45
1:A:555:LYS:HB3	1:A:555:LYS:HZ2	1.79	0.45
1:B:663:GLU:HB3	1:B:667:ARG:NH1	2.32	0.45
1:A:455:LEU:HD12	1:A:587:TRP:HB3	1.99	0.45
1:A:609:GLU:HG3	8:A:978:HOH:O	2.15	0.44
1:A:565:PRO:HB3	1:A:588:TYR:CZ	2.52	0.44
1:A:470:HIS:HA	1:A:527:ASN:O	2.16	0.44
1:A:631:VAL:HG11	1:B:628:GLN:HG2	1.98	0.44
1:A:312:LEU:HB3	1:A:666:TYR:CD2	2.53	0.44
1:B:605:ASN:ND2	8:B:1129:HOH:O	2.31	0.44
1:A:420:GLN:HG3	2:A:860:ACT:H3	1.99	0.44
1:B:362:LEU:HD11	1:B:384:VAL:HG21	2.00	0.44
1:B:414:ARG:HD3	1:B:678:TRP:CD2	2.53	0.44
1:B:611:ALA:HA	1:B:616:LEU:HD12	1.98	0.44
1:A:523:LEU:HG	1:A:533:LEU:CD2	2.48	0.43
1:A:686:SER:HA	1:A:691:PHE:CG	2.53	0.43
1:B:337:LEU:HD22	1:B:706:TYR:CD1	2.53	0.43
1:A:430:ARG:NH1	8:A:1038:HOH:O	2.50	0.43
1:A:462:PHE:HB3	1:A:463:PRO:CD	2.48	0.43
1:A:680:VAL:HA	1:A:681:PRO:HD3	1.88	0.43
1:B:445:HIS:C	1:B:445:HIS:CD2	2.92	0.43
1:B:676:TRP:CE2	1:B:680:VAL:HG21	2.53	0.43
1:A:353:GLN:O	1:A:356:PRO:HG2	2.18	0.43
1:A:464:GLN:HB3	1:A:579:PHE:CE2	2.53	0.43
1:A:555:LYS:HE2	8:A:1026:HOH:O	2.18	0.43
4:A:750:HEM:HBB2	4:A:750:HEM:HHC	2.00	0.43
1:A:445:HIS:C	1:A:445:HIS:CD2	2.92	0.42
1:A:590:GLY:HA3	1:A:638:LEU:HD21	2.01	0.42
1:B:701:THR:HA	1:B:702:PRO:C	2.39	0.42
1:A:569:ASN:N	1:A:569:ASN:HD22	2.16	0.42
1:A:620:LYS:HE3	1:A:622:SER:OG	2.18	0.42
1:B:350:THR:HG23	1:B:353:GLN:OE1	2.19	0.42
1:B:684:SER:HB3	1:B:687:ILE:CD1	2.50	0.42

Continued on next page...

Continued from previous page...

Atom-1	Atom-2	Interatomic distance (Å)	Clash overlap (Å)
1:A:501:PHE:HD2	1:A:520:LEU:HD13	1.83	0.42
1:A:322:LEU:HB3	1:A:699:ARG:HE	1.80	0.42
1:A:485:TYR:CE2	1:A:512:ALA:HB1	2.54	0.42
1:A:569:ASN:H	1:A:569:ASN:HD22	1.66	0.42
1:B:299:ARG:NH1	1:B:299:ARG:CB	2.83	0.42
1:A:415:CYS:HB2	4:A:750:HEM:ND	2.34	0.42
1:A:696:LEU:HD22	1:B:330:ILE:CD1	2.46	0.42
1:A:512:ALA:HA	1:A:513:PRO:HD3	1.80	0.42
1:A:384:VAL:O	1:A:388:ILE:HG13	2.20	0.42
1:A:596:ARG:O	1:A:600:ASP:HB2	2.20	0.42
1:A:575:GLY:HA3	8:A:1008:HOH:O	2.20	0.42
1:B:480:ILE:HD13	1:B:541:VAL:HG13	2.02	0.42
1:A:631:VAL:HG11	1:B:628:GLN:CG	2.50	0.41
1:A:371:ARG:CG	1:A:371:ARG:NH2	2.79	0.41
1:B:546:ILE:HG12	1:B:560:LYS:HA	2.02	0.41
1:A:348:VAL:HG22	1:A:349:ARG:N	2.35	0.41
1:A:438:MET:SD	1:A:526:ALA:HB2	2.61	0.41
1:A:449:ALA:O	1:A:455:LEU:HA	2.21	0.41
1:B:355:PHE:CE1	1:B:385:ASN:HB2	2.55	0.41
1:B:470:HIS:O	1:B:527:ASN:HA	2.21	0.41
1:A:380:ARG:NH2	8:A:1037:HOH:O	2.38	0.41
1:A:542:LEU:HD21	1:A:646:VAL:HG22	2.03	0.40
1:A:553:TRP:CZ3	1:A:557:LEU:HD11	2.57	0.40
1:A:684:SER:HB3	1:A:687:ILE:HD11	2.04	0.40
1:B:566:ALA:HB2	1:B:585:SER:HB3	2.03	0.40
1:B:676:TRP:CZ2	1:B:680:VAL:HG21	2.55	0.40
1:A:414:ARG:HD3	1:A:678:TRP:CD2	2.56	0.40

There are no symmetry-related clashes.

5.3 Torsion angles [i](#)

5.3.1 Protein backbone [i](#)

In the following table, the Percentiles column shows the percent Ramachandran outliers of the chain as a percentile score with respect to all X-ray entries followed by that with respect to entries of similar resolution.

The Analysed column shows the number of residues for which the backbone conformation was analysed, and the total number of residues.

Mol	Chain	Analysed	Favoured	Allowed	Outliers	Percentiles	
1	A	405/420 (96%)	375 (93%)	30 (7%)	0	100	100
1	B	407/420 (97%)	398 (98%)	9 (2%)	0	100	100
All	All	812/840 (97%)	773 (95%)	39 (5%)	0	100	100

There are no Ramachandran outliers to report.

5.3.2 Protein sidechains [i](#)

In the following table, the Percentiles column shows the percent sidechain outliers of the chain as a percentile score with respect to all X-ray entries followed by that with respect to entries of similar resolution.

The Analysed column shows the number of residues for which the sidechain conformation was analysed, and the total number of residues.

Mol	Chain	Analysed	Rotameric	Outliers	Percentiles	
1	A	365/375 (97%)	355 (97%)	10 (3%)	44	46
1	B	366/375 (98%)	360 (98%)	6 (2%)	62	67
All	All	731/750 (98%)	715 (98%)	16 (2%)	52	55

All (16) residues with a non-rotameric sidechain are listed below:

Mol	Chain	Res	Type
1	A	454	ASN
1	A	485	TYR
1	A	523	LEU
1	A	527	ASN
1	A	547	ARG
1	A	555	LYS
1	A	569	ASN
1	A	605	ASN
1	A	620	LYS
1	A	645	LYS
1	B	328	GLU
1	B	336	MET
1	B	353	GLN
1	B	392	SER
1	B	540	LEU
1	B	547	ARG

Sometimes sidechains can be flipped to improve hydrogen bonding and reduce clashes. All (19)

such sidechains are listed below:

Mol	Chain	Res	Type
1	A	425	GLN
1	A	454	ASN
1	A	507	GLN
1	A	508	GLN
1	A	527	ASN
1	A	569	ASN
1	A	605	ASN
1	A	697	ASN
1	B	364	GLN
1	B	385	ASN
1	B	425	GLN
1	B	454	ASN
1	B	507	GLN
1	B	527	ASN
1	B	535	GLN
1	B	601	ASN
1	B	605	ASN
1	B	642	GLN
1	B	697	ASN

5.3.3 RNA [i](#)

There are no RNA molecules in this entry.

5.4 Non-standard residues in protein, DNA, RNA chains [i](#)

There are no non-standard protein/DNA/RNA residues in this entry.

5.5 Carbohydrates [i](#)

There are no monosaccharides in this entry.

5.6 Ligand geometry [i](#)

Of 11 ligands modelled in this entry, 1 is monoatomic - leaving 10 for Mogul analysis.

In the following table, the Counts columns list the number of bonds (or angles) for which Mogul statistics could be retrieved, the number of bonds (or angles) that are observed in the model and the number of bonds (or angles) that are defined in the Chemical Component Dictionary. The Link column lists molecule types, if any, to which the group is linked. The Z score for a bond

length (or angle) is the number of standard deviations the observed value is removed from the expected value. A bond length (or angle) with $|Z| > 2$ is considered an outlier worth inspection. RMSZ is the root-mean-square of all Z scores of the bond lengths (or angles).

Mol	Type	Chain	Res	Link	Bond lengths			Bond angles		
					Counts	RMSZ	# Z > 2	Counts	RMSZ	# Z > 2
7	NO	B	910	4	0,1,1	-	-	-		
2	ACT	A	860	-	3,3,3	0.91	0	3,3,3	0.79	0
5	H4B	A	760	-	16,18,18	2.19	3 (18%)	11,26,26	4.37	9 (81%)
6	ARG	A	770	-	10,11,11	0.88	0	11,13,13	0.74	0
2	ACT	B	861	-	3,3,3	1.07	0	3,3,3	0.61	0
7	NO	A	910	4	0,1,1	-	-	-		
5	H4B	B	761	-	16,18,18	2.21	5 (31%)	11,26,26	4.35	9 (81%)
4	HEM	A	750	1,7	41,50,50	1.16	2 (4%)	45,82,82	1.56	9 (20%)
6	ARG	B	771	-	10,11,11	0.76	0	11,13,13	0.77	0
4	HEM	B	750	1,7	41,50,50	1.26	4 (9%)	45,82,82	1.23	6 (13%)

In the following table, the Chirals column lists the number of chiral outliers, the number of chiral centers analysed, the number of these observed in the model and the number defined in the Chemical Component Dictionary. Similar counts are reported in the Torsion and Rings columns. '-' means no outliers of that kind were identified.

Mol	Type	Chain	Res	Link	Chirals	Torsions	Rings
5	H4B	A	760	-	-	0/8/17/17	0/2/2/2
6	ARG	A	770	-	-	0/11/11/11	-
5	H4B	B	761	-	-	0/8/17/17	0/2/2/2
4	HEM	A	750	1,7	-	1/12/54/54	-
6	ARG	B	771	-	-	0/11/11/11	-
4	HEM	B	750	1,7	-	1/12/54/54	-

All (14) bond length outliers are listed below:

Mol	Chain	Res	Type	Atoms	Z	Observed(Å)	Ideal(Å)
5	B	761	H4B	C4-N3	5.51	1.42	1.33
5	A	760	H4B	C4-N3	5.46	1.42	1.33
5	A	760	H4B	C4A-N5	4.45	1.47	1.38
5	B	761	H4B	C4A-N5	4.17	1.46	1.38
5	A	760	H4B	C6-N5	3.82	1.53	1.45
5	B	761	H4B	C6-N5	3.81	1.53	1.45
4	A	750	HEM	C3C-CAC	-3.25	1.41	1.47
4	B	750	HEM	C3C-C2C	-3.20	1.35	1.40
4	B	750	HEM	C3C-CAC	-3.14	1.41	1.47
4	B	750	HEM	CHB-C1B	2.53	1.41	1.35
4	A	750	HEM	CMD-C2D	2.44	1.56	1.50

Continued on next page...

Continued from previous page...

Mol	Chain	Res	Type	Atoms	Z	Observed(Å)	Ideal(Å)
5	B	761	H4B	C7-N8	2.16	1.48	1.44
4	B	750	HEM	CAB-C3B	-2.15	1.41	1.47
5	B	761	H4B	C8A-N1	2.03	1.38	1.34

All (33) bond angle outliers are listed below:

Mol	Chain	Res	Type	Atoms	Z	Observed(°)	Ideal(°)
5	B	761	H4B	C8A-C4A-C4	9.51	123.02	114.57
5	A	760	H4B	C8A-C4A-C4	9.48	122.99	114.57
5	B	761	H4B	C2-N3-C4	5.77	125.10	115.93
5	A	760	H4B	C2-N3-C4	5.45	124.59	115.93
5	A	760	H4B	N1-C2-N3	-4.88	117.77	125.42
4	A	750	HEM	C4B-CHC-C1C	4.58	128.60	122.56
5	B	761	H4B	N1-C2-N3	-4.58	118.24	125.42
4	A	750	HEM	CBA-CAA-C2A	-4.16	105.52	112.62
5	B	761	H4B	C4A-C4-N3	-3.76	113.33	124.01
5	A	760	H4B	C2-N1-C8A	3.71	122.86	114.54
5	A	760	H4B	C4A-C4-N3	-3.66	113.61	124.01
5	B	761	H4B	N2-C2-N1	3.37	122.49	117.25
5	B	761	H4B	C4-C4A-N5	-3.36	116.30	119.12
5	A	760	H4B	N2-C2-N1	3.35	122.46	117.25
5	A	760	H4B	C4-C4A-N5	-3.27	116.38	119.12
5	B	761	H4B	C2-N1-C8A	3.26	121.84	114.54
5	A	760	H4B	C4A-N5-C6	-3.11	112.70	121.16
5	B	761	H4B	C4A-N5-C6	-2.75	113.67	121.16
4	B	750	HEM	CBA-CAA-C2A	-2.73	107.97	112.62
4	A	750	HEM	C4C-CHD-C1D	2.62	126.01	122.56
5	B	761	H4B	O9-C9-C6	2.58	115.14	108.98
4	B	750	HEM	CAB-C3B-C2B	-2.51	120.32	128.60
4	B	750	HEM	C4C-CHD-C1D	2.41	125.74	122.56
5	A	760	H4B	O9-C9-C6	2.40	114.71	108.98
4	B	750	HEM	C4B-CHC-C1C	2.36	125.68	122.56
4	A	750	HEM	CHC-C4B-NB	-2.33	121.90	124.43
4	A	750	HEM	CMC-C2C-C3C	2.28	128.95	124.68
4	A	750	HEM	CBD-CAD-C3D	-2.24	106.39	112.63
4	A	750	HEM	C4A-C3A-C2A	2.23	108.55	107.00
4	A	750	HEM	CAB-C3B-C2B	-2.17	121.46	128.60
4	B	750	HEM	CMB-C2B-C1B	2.17	128.34	125.04
4	A	750	HEM	CMA-C3A-C4A	-2.17	125.13	128.46
4	B	750	HEM	C4A-C3A-C2A	-2.08	105.55	107.00

There are no chirality outliers.

All (2) torsion outliers are listed below:

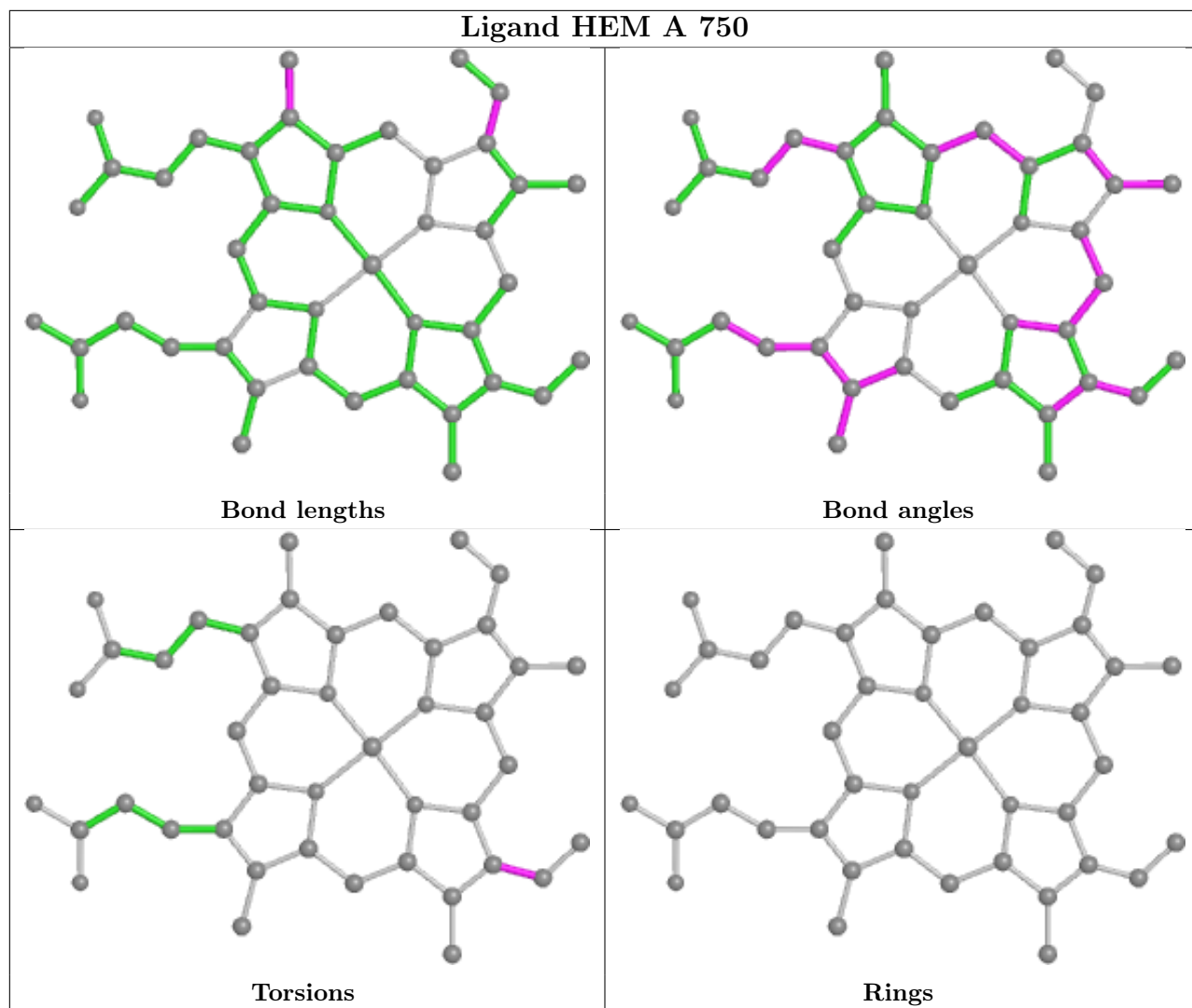
Mol	Chain	Res	Type	Atoms
4	B	750	HEM	C4B-C3B-CAB-CBB
4	A	750	HEM	C4B-C3B-CAB-CBB

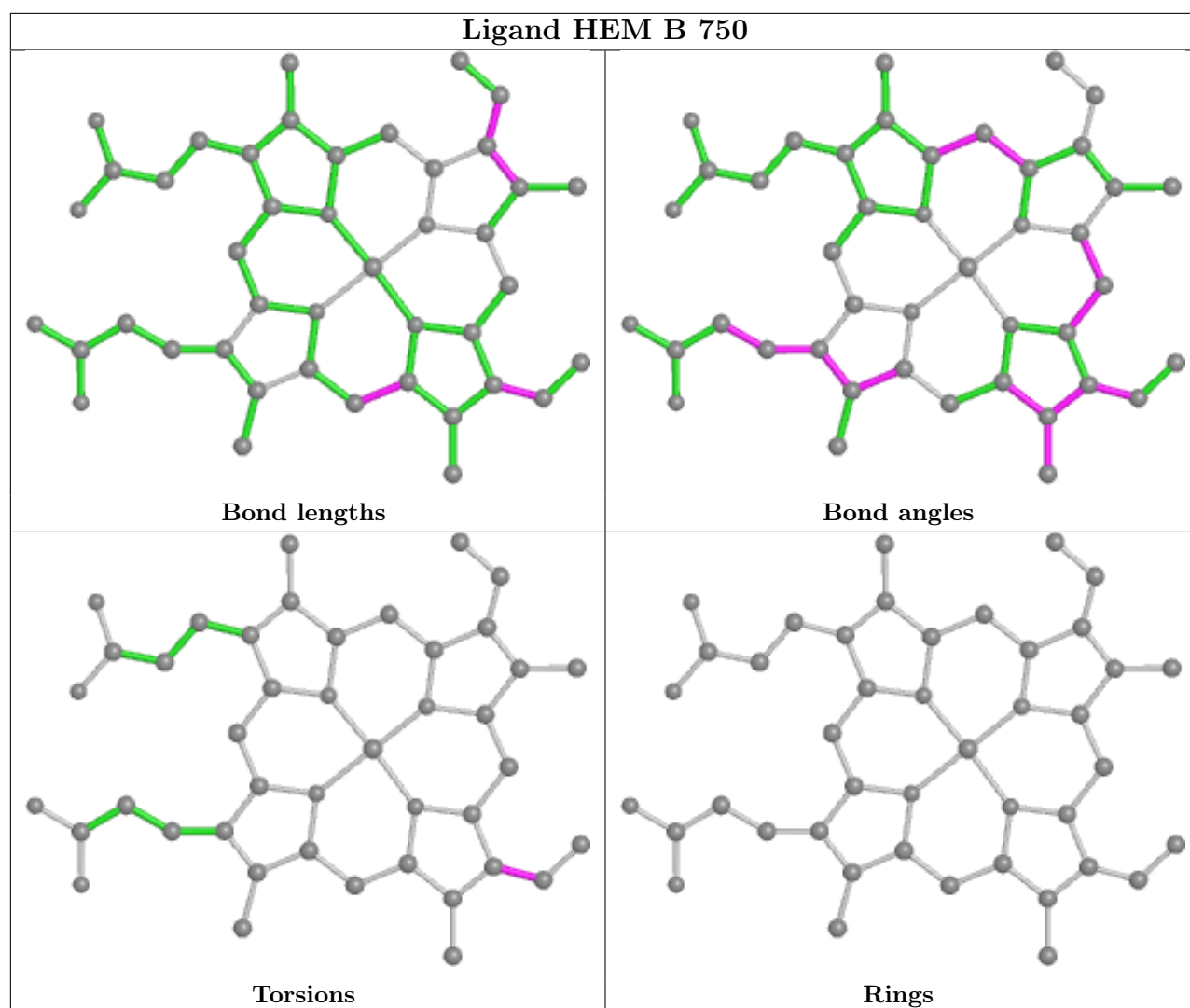
There are no ring outliers.

5 monomers are involved in 10 short contacts:

Mol	Chain	Res	Type	Clashes	Symm-Clashes
2	A	860	ACT	1	0
5	A	760	H4B	1	0
2	B	861	ACT	2	0
4	A	750	HEM	3	0
4	B	750	HEM	3	0

The following is a two-dimensional graphical depiction of Mogul quality analysis of bond lengths, bond angles, torsion angles, and ring geometry for all instances of the Ligand of Interest. In addition, ligands with molecular weight > 250 and outliers as shown on the validation Tables will also be included. For torsion angles, if less than 5% of the Mogul distribution of torsion angles is within 10 degrees of the torsion angle in question, then that torsion angle is considered an outlier. Any bond that is central to one or more torsion angles identified as an outlier by Mogul will be highlighted in the graph. For rings, the root-mean-square deviation (RMSD) between the ring in question and similar rings identified by Mogul is calculated over all ring torsion angles. If the average RMSD is greater than 60 degrees and the minimal RMSD between the ring in question and any Mogul-identified rings is also greater than 60 degrees, then that ring is considered an outlier. The outliers are highlighted in purple. The color gray indicates Mogul did not find sufficient equivalents in the CSD to analyse the geometry.





5.7 Other polymers [i](#)

There are no such residues in this entry.

5.8 Polymer linkage issues [i](#)

There are no chain breaks in this entry.

6 Fit of model and data

6.1 Protein, DNA and RNA chains

In the following table, the column labelled ‘#RSRZ > 2’ contains the number (and percentage) of RSRZ outliers, followed by percent RSRZ outliers for the chain as percentile scores relative to all X-ray entries and entries of similar resolution. The OWAB column contains the minimum, median, 95th percentile and maximum values of the occupancy-weighted average B-factor per residue. The column labelled ‘Q < 0.9’ lists the number of (and percentage) of residues with an average occupancy less than 0.9.

Mol	Chain	Analysed	<RSRZ>	#RSRZ>2	OWAB(Å ²)	Q<0.9
1	A	409/420 (97%)	0.46	22 (5%) 25 24	27, 48, 77, 92	0
1	B	411/420 (97%)	0.11	8 (1%) 66 65	27, 39, 64, 82	0
All	All	820/840 (97%)	0.28	30 (3%) 41 41	27, 43, 74, 92	0

All (30) RSRZ outliers are listed below:

Mol	Chain	Res	Type	RSRZ
1	B	348	VAL	6.0
1	A	355	PHE	5.1
1	A	348	VAL	4.4
1	A	352	ASP	4.0
1	B	300	PHE	4.0
1	B	321	THR	3.7
1	A	554	PHE	3.6
1	A	349	ARG	3.6
1	B	350	THR	3.2
1	A	373	GLY	3.1
1	B	718	GLY	3.1
1	B	352	ASP	3.0
1	B	389	GLU	3.0
1	A	716	TRP	2.9
1	A	490	GLY	2.8
1	A	551	PHE	2.7
1	A	388	ILE	2.6
1	A	322	LEU	2.6
1	A	381	LEU	2.5
1	A	393	THR	2.5
1	A	470	HIS	2.4
1	A	375	LYS	2.4
1	A	557	LEU	2.3
1	A	715	VAL	2.3

Continued on next page...

Continued from previous page...

Mol	Chain	Res	Type	RSRZ
1	A	351	LYS	2.2
1	A	391	THR	2.1
1	A	376	ALA	2.1
1	A	321	THR	2.0
1	B	699	ARG	2.0
1	A	324	THR	2.0

6.2 Non-standard residues in protein, DNA, RNA chains [i](#)

There are no non-standard protein/DNA/RNA residues in this entry.

6.3 Carbohydrates [i](#)

There are no monosaccharides in this entry.

6.4 Ligands [i](#)

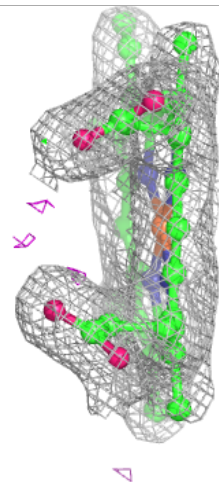
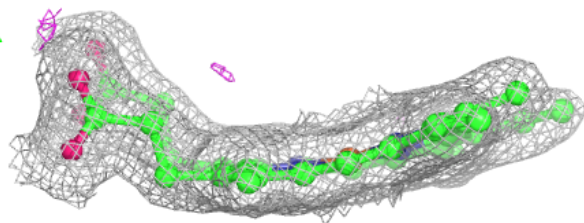
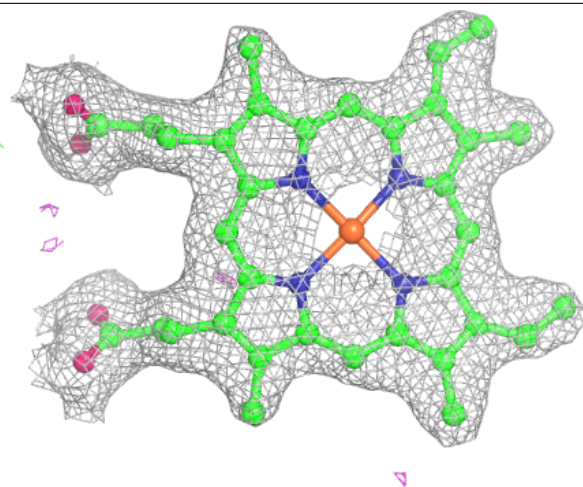
In the following table, the Atoms column lists the number of modelled atoms in the group and the number defined in the chemical component dictionary. The B-factors column lists the minimum, median, 95th percentile and maximum values of B factors of atoms in the group. The column labelled 'Q< 0.9' lists the number of atoms with occupancy less than 0.9.

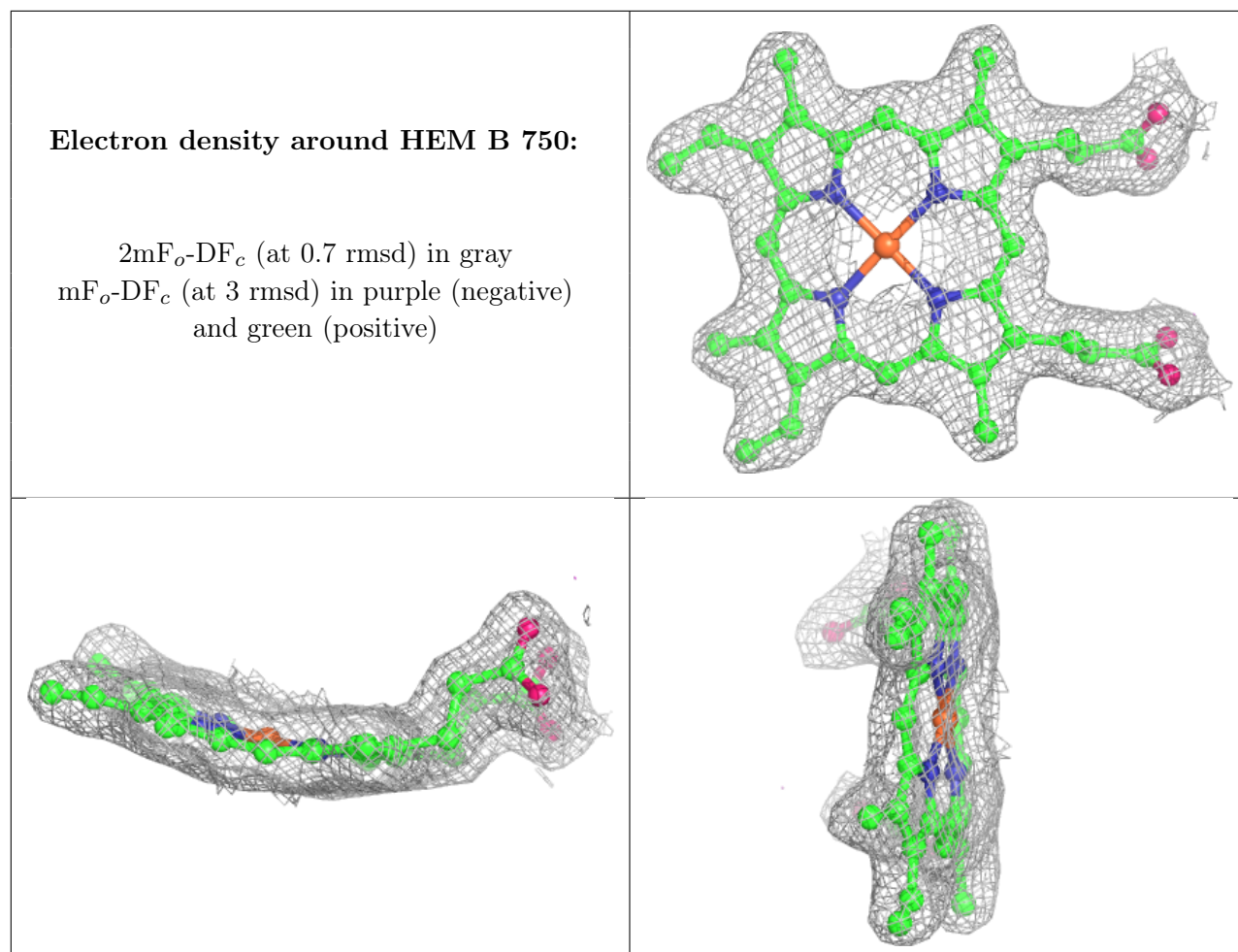
Mol	Type	Chain	Res	Atoms	RSCC	RSR	B-factors(Å ²)	Q<0.9
2	ACT	B	861	4/4	0.91	0.21	53,55,55,56	0
2	ACT	A	860	4/4	0.94	0.21	64,65,65,65	0
5	H4B	A	760	17/17	0.97	0.11	31,33,37,37	0
4	HEM	A	750	43/43	0.98	0.12	29,31,34,36	0
5	H4B	B	761	17/17	0.98	0.14	25,30,36,36	0
6	ARG	A	770	12/12	0.98	0.10	33,36,37,38	0
6	ARG	B	771	12/12	0.98	0.14	26,30,32,33	0
3	ZN	A	900	1/1	0.99	0.08	40,40,40,40	0
4	HEM	B	750	43/43	0.99	0.13	24,28,34,37	0
7	NO	A	910	2/2	0.99	0.11	34,34,34,35	0
7	NO	B	910	2/2	0.99	0.10	32,32,32,34	0

The following is a graphical depiction of the model fit to experimental electron density of all instances of the Ligand of Interest. In addition, ligands with molecular weight > 250 and outliers as shown on the geometry validation Tables will also be included. Each fit is shown from different orientation to approximate a three-dimensional view.

Electron density around HEM A 750:

$2mF_o-DF_c$ (at 0.7 rmsd) in gray
 mF_o-DF_c (at 3 rmsd) in purple (negative)
and green (positive)





6.5 Other polymers [i](#)

There are no such residues in this entry.