



Full wwPDB X-ray Structure Validation Report ⓘ

Dec 12, 2024 – 08:19 PM EST

PDB ID : 7G5F
Title : Crystal Structure of rat Autotaxin in complex with 1H-benzotriazol-5-yl-[rac-(1R,2R,6S,7S)-9-[4-(cyclopropylmethoxy)naphthalene-2-carbonyl]-4,9-diazatri-cyclo[5.3.0.02,6]decan-4-yl]methanone, i.e. SMILES N1(C[C@H]2[C@@H](C1)[C@H]1[C@@H]2CN(C1)C(=O)c1ccc2c(c1)N=NN2)C(=O)c1cc(c2c(c1)cccc2)OCC1CC1 with IC50=0.00985223 microM
Authors : Stihle, M.; Benz, J.; Hunziker, D.; Mattei, P.; Rudolph, M.G.
Deposited on : 2023-06-05
Resolution : 2.30 Å(reported)

This is a Full wwPDB X-ray Structure Validation Report for a publicly released PDB entry.

We welcome your comments at validation@mail.wwpdb.org

A user guide is available at

<https://www.wwpdb.org/validation/2017/XrayValidationReportHelp>

with specific help available everywhere you see the ⓘ symbol.

The types of validation reports are described at

<http://www.wwpdb.org/validation/2017/FAQs#types>.

The following versions of software and data (see [references ⓘ](#)) were used in the production of this report:

MolProbity : 4.02b-467
Mogul : 2022.3.0, CSD as543be (2022)
Xtriage (Phenix) : 1.21
EDS : 3.0
buster-report : 1.1.7 (2018)
Percentile statistics : 20231227.v01 (using entries in the PDB archive December 27th 2023)
CCP4 : 9.0.004 (Gargrove)
Density-Fitness : 1.0.11
Ideal geometry (proteins) : Engh & Huber (2001)

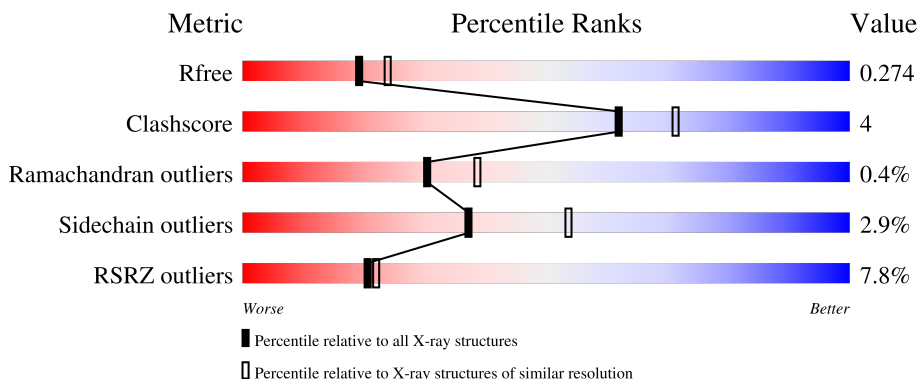
1 Overall quality at a glance

The following experimental techniques were used to determine the structure:

X-RAY DIFFRACTION

The reported resolution of this entry is 2.30 Å.

Percentile scores (ranging between 0-100) for global validation metrics of the entry are shown in the following graphic. The table shows the number of entries on which the scores are based.



Metric	Whole archive (#Entries)	Similar resolution (#Entries, resolution range(Å))
R_{free}	164625	5963 (2.30-2.30)
Clashscore	180529	6698 (2.30-2.30)
Ramachandran outliers	177936	6640 (2.30-2.30)
Sidechain outliers	177891	6640 (2.30-2.30)
RSRZ outliers	164620	5963 (2.30-2.30)

The table below summarises the geometric issues observed across the polymeric chains and their fit to the electron density. The red, orange, yellow and green segments of the lower bar indicate the fraction of residues that contain outliers for ≥ 3 , 2, 1 and 0 types of geometric quality criteria respectively. A grey segment represents the fraction of residues that are not modelled. The numeric value for each fraction is indicated below the corresponding segment, with a dot representing fractions $\leq 5\%$. The upper red bar (where present) indicates the fraction of residues that have poor fit to the electron density. The numeric value is given above the bar.

Mol	Chain	Length	Quality of chain
1	A	846	 7% 84% 11% • 5%
2	B	2	 50% 50%

Ideal geometry (DNA, RNA) : Parkinson et al. (1996)
 Validation Pipeline (wwPDB-VP) : 2.40

2 Entry composition [i](#)

There are 8 unique types of molecules in this entry. The entry contains 6879 atoms, of which 0 are hydrogens and 0 are deuteriums.

In the tables below, the ZeroOcc column contains the number of atoms modelled with zero occupancy, the AltConf column contains the number of residues with at least one atom in alternate conformation and the Trace column contains the number of residues modelled with at most 2 atoms.

- Molecule 1 is a protein called Isoform 2 of Ectonucleotide pyrophosphatase/phosphodiesterase family member 2.

Mol	Chain	Residues	Atoms					ZeroOcc	AltConf	Trace
			Total	C	N	O	S			
1	A	805	6500	4120	1121	1210	49	0	0	0

There are 14 discrepancies between the modelled and reference sequences:

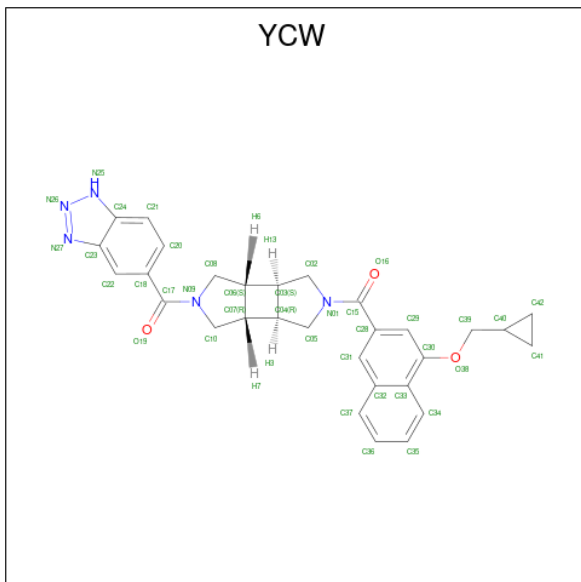
Chain	Residue	Modelled	Actual	Comment	Reference
A	53	ALA	ASN	engineered mutation	UNP Q64610
A	410	ALA	ASN	engineered mutation	UNP Q64610
A	591	THR	ARG	engineered mutation	UNP Q64610
A	863	GLY	-	expression tag	UNP Q64610
A	864	GLY	-	expression tag	UNP Q64610
A	865	ARG	-	expression tag	UNP Q64610
A	866	HIS	-	expression tag	UNP Q64610
A	867	HIS	-	expression tag	UNP Q64610
A	868	HIS	-	expression tag	UNP Q64610
A	869	HIS	-	expression tag	UNP Q64610
A	870	HIS	-	expression tag	UNP Q64610
A	871	HIS	-	expression tag	UNP Q64610
A	872	HIS	-	expression tag	UNP Q64610
A	873	HIS	-	expression tag	UNP Q64610

- Molecule 2 is an oligosaccharide called 2-acetamido-2-deoxy-beta-D-glucopyranose-(1-4)-2-acetamido-2-deoxy-beta-D-glucopyranose.



Mol	Chain	Residues	Atoms				ZeroOcc	AltConf	Trace
			Total	C	N	O			
2	B	2	28	16	2	10	0	0	0

- Molecule 3 is [(3aR,3bR,6aS,6bS)-5-(1H-benzotriazole-5-carbonyl)octahydrocyclobuta[1,2-c:3,4-c']dipyrrol-2(1H)-yl][4-(cyclopropylmethoxy)naphthalen-2-yl]methanone (three-letter code: YCW) (formula: C₃₀H₂₉N₅O₃) (labeled as "Ligand of Interest" by depositor).



Mol	Chain	Residues	Atoms				ZeroOcc	AltConf
			Total	C	N	O		
3	A	1	38	30	5	3	0	0

- Molecule 4 is ZINC ION (three-letter code: ZN) (formula: Zn).

Mol	Chain	Residues	Atoms		ZeroOcc	AltConf
			Total	Zn		
4	A	1	1	1	0	0

- Molecule 5 is CALCIUM ION (three-letter code: CA) (formula: Ca).

Mol	Chain	Residues	Atoms		ZeroOcc	AltConf
			Total	Ca		
5	A	1	1	1	0	0

- Molecule 6 is SODIUM ION (three-letter code: NA) (formula: Na).

Mol	Chain	Residues	Atoms		ZeroOcc	AltConf
			Total	Na		
6	A	2	2	2	0	0

- Molecule 7 is CHLORIDE ION (three-letter code: CL) (formula: Cl).

Mol	Chain	Residues	Atoms	ZeroOcc	AltConf
7	A	1	Total Cl 1 1	0	0

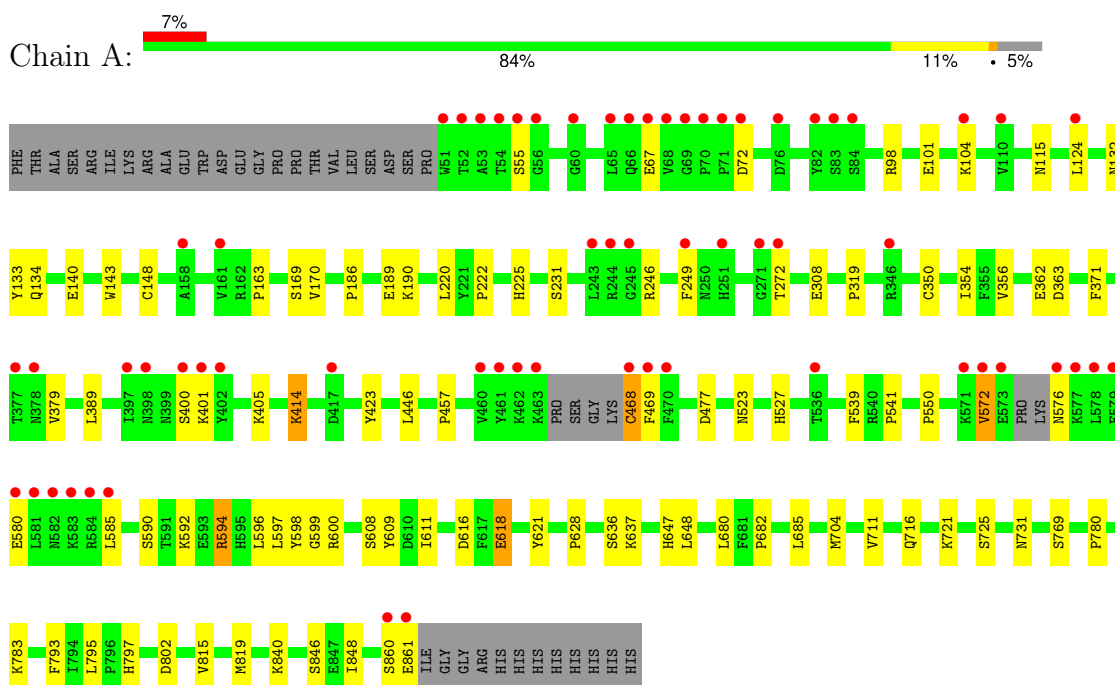
- Molecule 8 is water.

Mol	Chain	Residues	Atoms	ZeroOcc	AltConf
8	A	308	Total O 308 308	0	0

3 Residue-property plots i

These plots are drawn for all protein, RNA, DNA and oligosaccharide chains in the entry. The first graphic for a chain summarises the proportions of the various outlier classes displayed in the second graphic. The second graphic shows the sequence view annotated by issues in geometry and electron density. Residues are color-coded according to the number of geometric quality criteria for which they contain at least one outlier: green = 0, yellow = 1, orange = 2 and red = 3 or more. A red dot above a residue indicates a poor fit to the electron density ($RSRZ > 2$). Stretches of 2 or more consecutive residues without any outlier are shown as a green connector. Residues present in the sample, but not in the model, are shown in grey.

- Molecule 1: Isoform 2 of Ectonucleotide pyrophosphatase/phosphodiesterase family member 2



- Molecule 2: 2-acetamido-2-deoxy-beta-D-glucopyranose-(1-4)-2-acetamido-2-deoxy-beta-D-glucopyranose



4 Data and refinement statistics

Property	Value	Source
Space group	P 21 21 21	Depositor
Cell constants a, b, c, α , β , γ	84.08Å 91.95Å 120.10Å 90.00° 90.00° 90.00°	Depositor
Resolution (Å)	45.98 – 2.30 45.98 – 2.30	Depositor EDS
% Data completeness (in resolution range)	95.4 (45.98-2.30) 90.3 (45.98-2.30)	Depositor EDS
R_{merge}	0.20	Depositor
R_{sym}	(Not available)	Depositor
$\langle I/\sigma(I) \rangle$ ¹	1.24 (at 2.29Å)	Xtrriage
Refinement program	PHENIX 1.20.1_4487	Depositor
R, R_{free}	0.215 , 0.270 0.219 , 0.274	Depositor DCC
R_{free} test set	2172 reflections (5.13%)	wwPDB-VP
Wilson B-factor (Å ²)	19.5	Xtrriage
Anisotropy	0.166	Xtrriage
Bulk solvent k_{sol} (e/Å ³), B_{sol} (Å ²)	0.29 , 34.2	EDS
L-test for twinning ²	$\langle L \rangle = 0.48$, $\langle L^2 \rangle = 0.31$	Xtrriage
Estimated twinning fraction	No twinning to report.	Xtrriage
F_o, F_c correlation	0.89	EDS
Total number of atoms	6879	wwPDB-VP
Average B, all atoms (Å ²)	25.0	wwPDB-VP

Xtrriage's analysis on translational NCS is as follows: *The largest off-origin peak in the Patterson function is 3.20% of the height of the origin peak. No significant pseudotranslation is detected.*

¹Intensities estimated from amplitudes.

²Theoretical values of $\langle |L| \rangle$, $\langle L^2 \rangle$ for acentric reflections are 0.5, 0.333 respectively for untwinned datasets, and 0.375, 0.2 for perfectly twinned datasets.

5 Model quality [i](#)

5.1 Standard geometry [i](#)

Bond lengths and bond angles in the following residue types are not validated in this section: NA, CL, ZN, CA, NAG, YCW

The Z score for a bond length (or angle) is the number of standard deviations the observed value is removed from the expected value. A bond length (or angle) with $|Z| > 5$ is considered an outlier worth inspection. RMSZ is the root-mean-square of all Z scores of the bond lengths (or angles).

Mol	Chain	Bond lengths		Bond angles	
		RMSZ	# Z >5	RMSZ	# Z >5
1	A	0.42	1/6682 (0.0%)	0.60	0/9062

All (1) bond length outliers are listed below:

Mol	Chain	Res	Type	Atoms	Z	Observed(Å)	Ideal(Å)
1	A	148	CYS	CB-SG	-5.62	1.72	1.81

There are no bond angle outliers.

There are no chirality outliers.

There are no planarity outliers.

5.2 Too-close contacts [i](#)

In the following table, the Non-H and H(model) columns list the number of non-hydrogen atoms and hydrogen atoms in the chain respectively. The H(added) column lists the number of hydrogen atoms added and optimized by MolProbity. The Clashes column lists the number of clashes within the asymmetric unit, whereas Symm-Clashes lists symmetry-related clashes.

Mol	Chain	Non-H	H(model)	H(added)	Clashes	Symm-Clashes
1	A	6500	0	6243	51	0
2	B	28	0	25	0	0
3	A	38	0	0	0	0
4	A	1	0	0	0	0
5	A	1	0	0	0	0
6	A	2	0	0	0	0
7	A	1	0	0	0	0
8	A	308	0	0	8	0
All	All	6879	0	6268	51	0

The all-atom clashscore is defined as the number of clashes found per 1000 atoms (including hydrogen atoms). The all-atom clashscore for this structure is 4.

All (51) close contacts within the same asymmetric unit are listed below, sorted by their clash magnitude.

Atom-1	Atom-2	Interatomic distance (Å)	Clash overlap (Å)
1:A:468:CYS:SG	1:A:469:PHE:N	2.58	0.74
1:A:362:GLU:OE2	8:A:1001:HOH:O	2.08	0.70
1:A:596:LEU:HD21	1:A:600:ARG:HB3	1.80	0.61
1:A:189:GLU:OE2	8:A:1002:HOH:O	2.16	0.61
1:A:637:LYS:HG3	1:A:725:SER:HA	1.82	0.61
1:A:550:PRO:HB2	1:A:611:ILE:HG12	1.87	0.57
1:A:414:LYS:NZ	8:A:1014:HOH:O	2.37	0.57
1:A:143:TRP:O	1:A:190:LYS:NZ	2.36	0.56
1:A:621:TYR:HA	1:A:628:PRO:HA	1.88	0.56
1:A:98:ARG:HG3	1:A:115:ASN:OD1	2.06	0.55
1:A:124:LEU:HD11	1:A:133:TYR:HE2	1.71	0.55
1:A:682:PRO:HB3	1:A:716:GLN:HB3	1.89	0.55
1:A:711:VAL:HG13	1:A:815:VAL:HG13	1.88	0.54
1:A:793:PHE:CD1	1:A:795:LEU:HG	2.43	0.54
1:A:599:GLY:HA3	1:A:840:LYS:HG3	1.91	0.53
1:A:637:LYS:O	1:A:721:LYS:NZ	2.42	0.53
1:A:585:LEU:HB3	1:A:590:SER:HB3	1.90	0.52
1:A:354:ILE:HG22	1:A:356:VAL:HB	1.93	0.51
1:A:186:PRO:O	8:A:1003:HOH:O	2.20	0.50
1:A:134:GLN:HG3	1:A:140:GLU:HB2	1.94	0.50
1:A:371:PHE:CE1	1:A:457:PRO:HA	2.47	0.49
1:A:769:SER:HB2	1:A:793:PHE:CZ	2.47	0.49
1:A:101:GLU:HB3	1:A:132:ASN:HD21	1.78	0.48
1:A:319:PRO:HD2	1:A:363:ASP:OD1	2.13	0.48
1:A:576:ASN:O	1:A:580:GLU:HB2	2.14	0.48
1:A:704:MET:HA	1:A:797:HIS:NE2	2.29	0.48
1:A:597:LEU:HD12	1:A:731:ASN:HB2	1.96	0.46
1:A:222:PRO:HA	1:A:225:HIS:CE1	2.51	0.46
1:A:780:PRO:HG2	1:A:783:LYS:HD2	1.97	0.46
1:A:802:ASP:HA	8:A:1237:HOH:O	2.15	0.46
1:A:594:ARG:HH22	1:A:636:SER:HB3	1.81	0.46
1:A:682:PRO:HG2	1:A:685:LEU:HB2	1.98	0.45
1:A:795:LEU:HD21	1:A:819:MET:HG2	1.97	0.45
1:A:134:GLN:O	1:A:140:GLU:HB2	2.17	0.45
1:A:169:SER:HA	1:A:356:VAL:O	2.17	0.44
1:A:220:LEU:CD2	1:A:523:ASN:HA	2.47	0.44
1:A:592:LYS:HA	1:A:618:GLU:OE2	2.18	0.44

Continued on next page...

Continued from previous page...

Atom-1	Atom-2	Interatomic distance (Å)	Clash overlap (Å)
1:A:647:HIS:CD2	1:A:648:LEU:HG	2.53	0.44
1:A:550:PRO:CB	1:A:611:ILE:HG12	2.47	0.44
1:A:308:GLU:OE2	8:A:1005:HOH:O	2.21	0.43
1:A:550:PRO:HB3	1:A:609:TYR:CE2	2.53	0.43
1:A:616:ASP:HA	8:A:1010:HOH:O	2.18	0.43
1:A:423:TYR:CE2	1:A:446:LEU:HD12	2.54	0.43
1:A:104:LYS:N	8:A:1012:HOH:O	2.34	0.43
1:A:539:PHE:CE1	1:A:541:PRO:HB3	2.54	0.42
1:A:539:PHE:O	1:A:541:PRO:HD3	2.20	0.42
1:A:220:LEU:HD21	1:A:523:ASN:HA	2.02	0.41
1:A:246:ARG:HA	1:A:249:PHE:HD1	1.85	0.41
1:A:680:LEU:HD23	1:A:680:LEU:HA	1.78	0.41
1:A:848:ILE:HD13	1:A:848:ILE:HA	1.84	0.40
1:A:163:PRO:HB3	1:A:350:CYS:O	2.22	0.40

There are no symmetry-related clashes.

5.3 Torsion angles [i](#)

5.3.1 Protein backbone [i](#)

In the following table, the Percentiles column shows the percent Ramachandran outliers of the chain as a percentile score with respect to all X-ray entries followed by that with respect to entries of similar resolution.

The Analysed column shows the number of residues for which the backbone conformation was analysed, and the total number of residues.

Mol	Chain	Analysed	Favoured	Allowed	Outliers	Percentiles
1	A	799/846 (94%)	765 (96%)	31 (4%)	3 (0%)	30 39

All (3) Ramachandran outliers are listed below:

Mol	Chain	Res	Type
1	A	477	ASP
1	A	860	SER
1	A	572	VAL

5.3.2 Protein sidechains [i](#)

In the following table, the Percentiles column shows the percent sidechain outliers of the chain as a percentile score with respect to all X-ray entries followed by that with respect to entries of similar resolution.

The Analysed column shows the number of residues for which the sidechain conformation was analysed, and the total number of residues.

Mol	Chain	Analysed	Rotameric	Outliers	Percentiles
1	A	728/765 (95%)	707 (97%)	21 (3%)	37 54

All (21) residues with a non-rotameric sidechain are listed below:

Mol	Chain	Res	Type
1	A	55	SER
1	A	67	GLU
1	A	72	ASP
1	A	170	VAL
1	A	231	SER
1	A	272	THR
1	A	379	VAL
1	A	389	LEU
1	A	400	SER
1	A	401	LYS
1	A	405	LYS
1	A	414	LYS
1	A	468	CYS
1	A	527	HIS
1	A	572	VAL
1	A	594	ARG
1	A	598	TYR
1	A	608	SER
1	A	618	GLU
1	A	846	SER
1	A	861	GLU

Sometimes sidechains can be flipped to improve hydrogen bonding and reduce clashes. There are no such sidechains identified.

5.3.3 RNA [i](#)

There are no RNA molecules in this entry.

5.4 Non-standard residues in protein, DNA, RNA chains [i](#)

There are no non-standard protein/DNA/RNA residues in this entry.

5.5 Carbohydrates [i](#)

2 monosaccharides are modelled in this entry.

In the following table, the Counts columns list the number of bonds (or angles) for which Mogul statistics could be retrieved, the number of bonds (or angles) that are observed in the model and the number of bonds (or angles) that are defined in the Chemical Component Dictionary. The Link column lists molecule types, if any, to which the group is linked. The Z score for a bond length (or angle) is the number of standard deviations the observed value is removed from the expected value. A bond length (or angle) with $|Z| > 2$ is considered an outlier worth inspection. RMSZ is the root-mean-square of all Z scores of the bond lengths (or angles).

Mol	Type	Chain	Res	Link	Bond lengths			Bond angles		
					Counts	RMSZ	# Z > 2	Counts	RMSZ	# Z > 2
2	NAG	B	1	1,2	14,14,15	0.65	0	17,19,21	0.82	0
2	NAG	B	2	2	14,14,15	0.44	0	17,19,21	1.04	1 (5%)

In the following table, the Chirals column lists the number of chiral outliers, the number of chiral centers analysed, the number of these observed in the model and the number defined in the Chemical Component Dictionary. Similar counts are reported in the Torsion and Rings columns. '-' means no outliers of that kind were identified.

Mol	Type	Chain	Res	Link	Chirals	Torsions	Rings
2	NAG	B	1	1,2	-	0/6/23/26	0/1/1/1
2	NAG	B	2	2	-	0/6/23/26	0/1/1/1

There are no bond length outliers.

All (1) bond angle outliers are listed below:

Mol	Chain	Res	Type	Atoms	Z	Observed(°)	Ideal(°)
2	B	2	NAG	C1-O5-C5	3.70	117.15	112.19

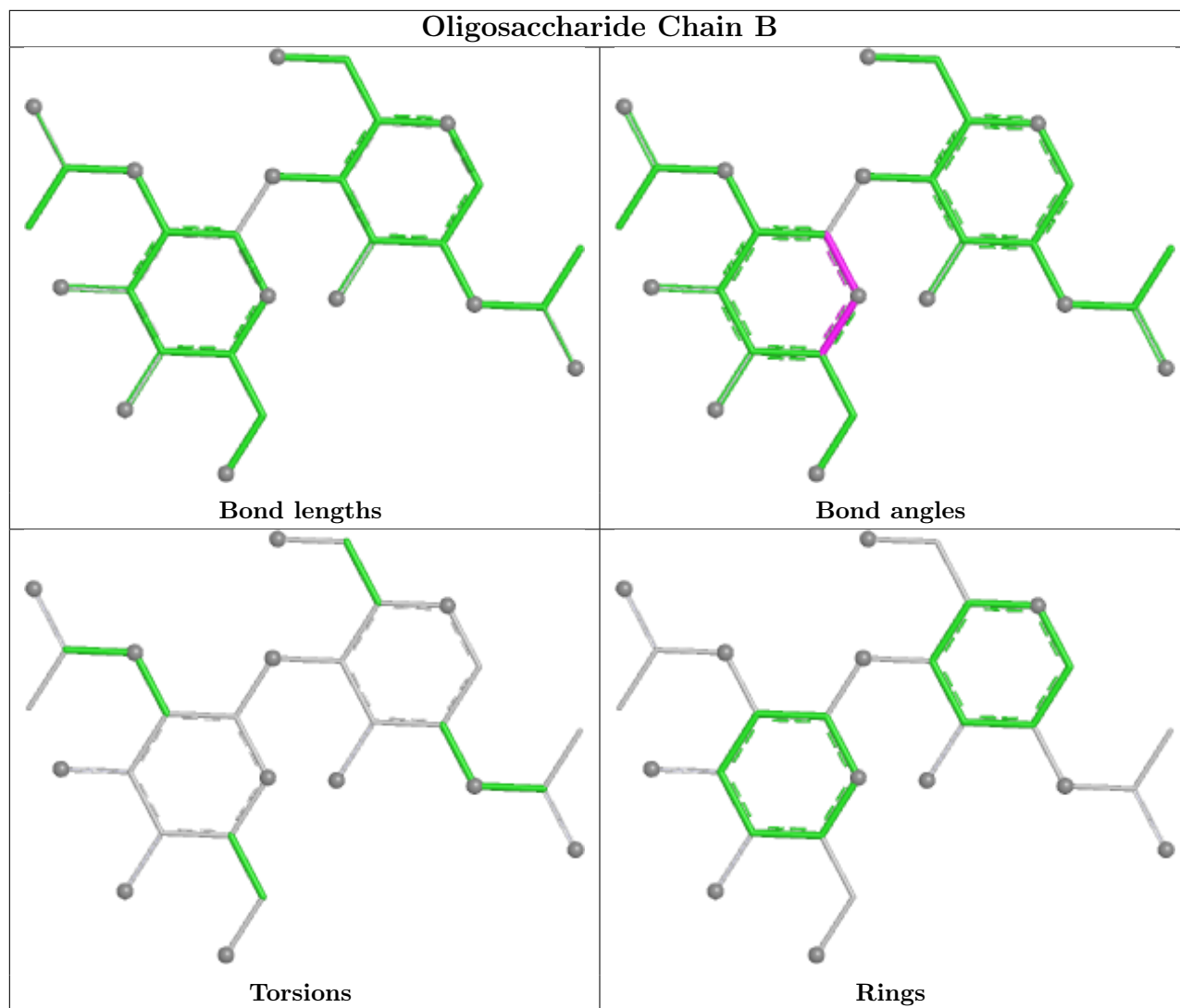
There are no chirality outliers.

There are no torsion outliers.

There are no ring outliers.

No monomer is involved in short contacts.

The following is a two-dimensional graphical depiction of Mogul quality analysis of bond lengths, bond angles, torsion angles, and ring geometry for oligosaccharide.



5.6 Ligand geometry [i](#)

Of 6 ligands modelled in this entry, 5 are monoatomic - leaving 1 for Mogul analysis.

In the following table, the Counts columns list the number of bonds (or angles) for which Mogul statistics could be retrieved, the number of bonds (or angles) that are observed in the model and the number of bonds (or angles) that are defined in the Chemical Component Dictionary. The Link column lists molecule types, if any, to which the group is linked. The Z score for a bond length (or angle) is the number of standard deviations the observed value is removed from the expected value. A bond length (or angle) with $|Z| > 2$ is considered an outlier worth inspection. RMSZ is the root-mean-square of all Z scores of the bond lengths (or angles).

Mol	Type	Chain	Res	Link	Bond lengths			Bond angles		
					Counts	RMSZ	$\# Z > 2$	Counts	RMSZ	$\# Z > 2$
3	YCW	A	901	4	41,45,45	1.01	4 (9%)	53,68,68	1.60	8 (15%)

In the following table, the Chirals column lists the number of chiral outliers, the number of chiral

centers analysed, the number of these observed in the model and the number defined in the Chemical Component Dictionary. Similar counts are reported in the Torsion and Rings columns. '-' means no outliers of that kind were identified.

Mol	Type	Chain	Res	Link	Chirals	Torsions	Rings
3	YCW	A	901	4	-	2/21/55/55	0/8/8/8

All (4) bond length outliers are listed below:

Mol	Chain	Res	Type	Atoms	Z	Observed(Å)	Ideal(Å)
3	A	901	YCW	C17-N09	2.46	1.39	1.34
3	A	901	YCW	C20-C18	2.19	1.42	1.39
3	A	901	YCW	C15-N01	2.12	1.39	1.34
3	A	901	YCW	C29-C28	2.05	1.42	1.39

All (8) bond angle outliers are listed below:

Mol	Chain	Res	Type	Atoms	Z	Observed(°)	Ideal(°)
3	A	901	YCW	C18-C17-N09	4.96	124.86	118.66
3	A	901	YCW	O19-C17-N09	-4.83	114.74	122.35
3	A	901	YCW	C20-C21-C24	-3.88	116.16	120.80
3	A	901	YCW	C04-C05-N01	3.76	106.70	103.45
3	A	901	YCW	C03-C02-N01	3.72	106.66	103.45
3	A	901	YCW	C08-N09-C10	-3.24	106.65	112.59
3	A	901	YCW	C34-C33-C32	2.46	121.09	117.92
3	A	901	YCW	C10-N09-C17	2.28	130.43	123.75

There are no chirality outliers.

All (2) torsion outliers are listed below:

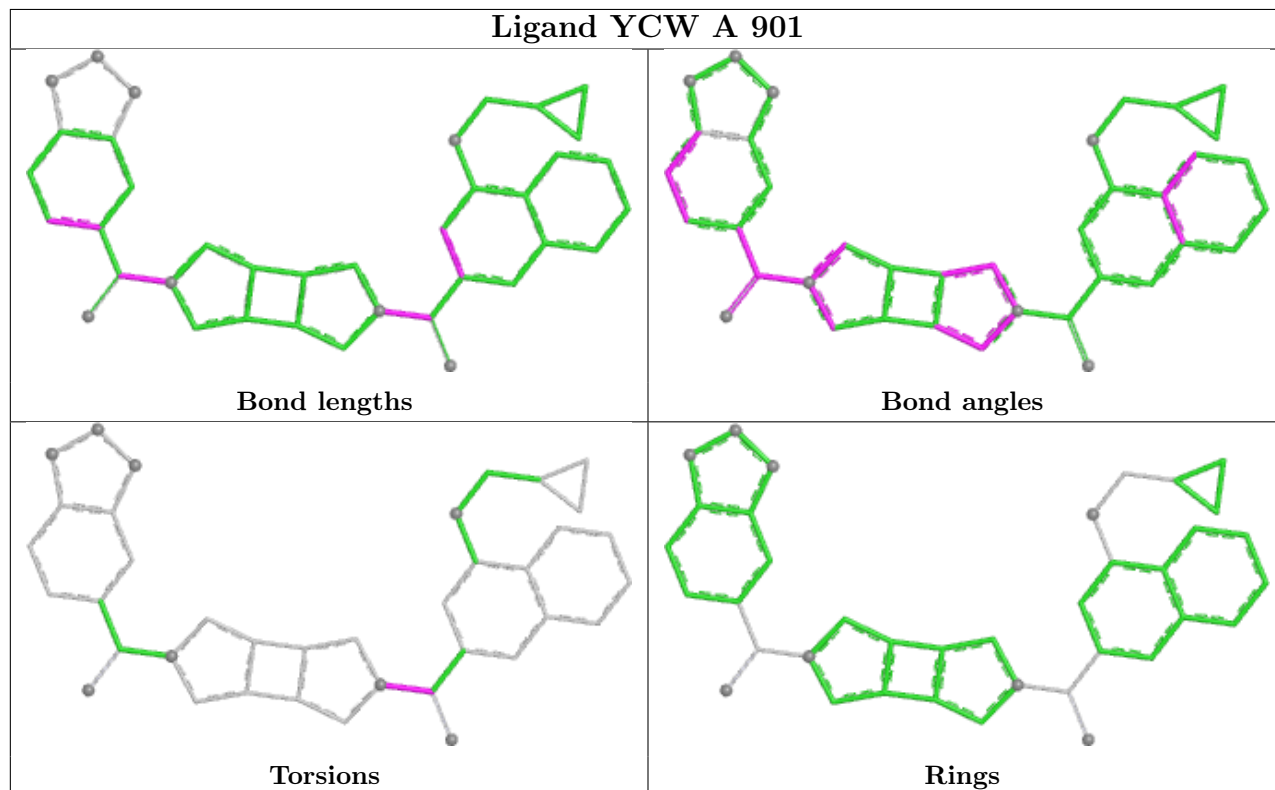
Mol	Chain	Res	Type	Atoms
3	A	901	YCW	C28-C15-N01-C02
3	A	901	YCW	O16-C15-N01-C02

There are no ring outliers.

No monomer is involved in short contacts.

The following is a two-dimensional graphical depiction of Mogul quality analysis of bond lengths, bond angles, torsion angles, and ring geometry for all instances of the Ligand of Interest. In addition, ligands with molecular weight > 250 and outliers as shown on the validation Tables will also be included. For torsion angles, if less than 5% of the Mogul distribution of torsion angles is within 10 degrees of the torsion angle in question, then that torsion angle is considered an outlier. Any bond that is central to one or more torsion angles identified as an outlier by Mogul will be highlighted in the graph. For rings, the root-mean-square deviation (RMSD) between the ring

in question and similar rings identified by Mogul is calculated over all ring torsion angles. If the average RMSD is greater than 60 degrees and the minimal RMSD between the ring in question and any Mogul-identified rings is also greater than 60 degrees, then that ring is considered an outlier. The outliers are highlighted in purple. The color gray indicates Mogul did not find sufficient equivalents in the CSD to analyse the geometry.



5.7 Other polymers [i](#)

There are no such residues in this entry.

5.8 Polymer linkage issues [i](#)

There are no chain breaks in this entry.

6 Fit of model and data

6.1 Protein, DNA and RNA chains

In the following table, the column labelled ‘#RSRZ> 2’ contains the number (and percentage) of RSRZ outliers, followed by percent RSRZ outliers for the chain as percentile scores relative to all X-ray entries and entries of similar resolution. The OWAB column contains the minimum, median, 95th percentile and maximum values of the occupancy-weighted average B-factor per residue. The column labelled ‘Q< 0.9’ lists the number of (and percentage) of residues with an average occupancy less than 0.9.

Mol	Chain	Analysed	<RSRZ>	#RSRZ>2	OWAB(Å ²)	Q<0.9
1	A	805/846 (95%)	0.58	63 (7%) 20 22	7, 21, 55, 102	0

All (63) RSRZ outliers are listed below:

Mol	Chain	Res	Type	RSRZ
1	A	71	PRO	7.6
1	A	70	PRO	6.3
1	A	578	LEU	6.0
1	A	469	PHE	5.5
1	A	51	TRP	5.4
1	A	573	GLU	5.4
1	A	461	TYR	5.3
1	A	68	VAL	5.2
1	A	581	LEU	4.6
1	A	861	GLU	4.6
1	A	54	THR	4.2
1	A	576	ASN	4.1
1	A	468	CYS	4.1
1	A	572	VAL	4.0
1	A	56	GLY	4.0
1	A	52	THR	3.9
1	A	577	LYS	3.7
1	A	67	GLU	3.7
1	A	860	SER	3.6
1	A	53	ALA	3.6
1	A	72	ASP	3.4
1	A	60	GLY	3.3
1	A	536	THR	3.3
1	A	582	ASN	3.3
1	A	271	GLY	3.2
1	A	584	ARG	3.1
1	A	251	HIS	3.1

Continued on next page...

Continued from previous page...

Mol	Chain	Res	Type	RSRZ
1	A	66	GLN	3.1
1	A	571	LYS	3.1
1	A	244	ARG	3.0
1	A	82	TYR	3.0
1	A	579	GLU	3.0
1	A	463	LYS	2.9
1	A	69	GLY	2.8
1	A	580	GLU	2.8
1	A	397	ILE	2.7
1	A	462	LYS	2.7
1	A	583	LYS	2.7
1	A	377	THR	2.7
1	A	245	GLY	2.6
1	A	400	SER	2.5
1	A	249	PHE	2.4
1	A	272	THR	2.4
1	A	585	LEU	2.4
1	A	460	VAL	2.4
1	A	470	PHE	2.4
1	A	158	ALA	2.4
1	A	83	SER	2.3
1	A	161	VAL	2.3
1	A	55	SER	2.3
1	A	417	ASP	2.3
1	A	124	LEU	2.2
1	A	401	LYS	2.2
1	A	110	VAL	2.2
1	A	378	ASN	2.2
1	A	104	LYS	2.2
1	A	65	LEU	2.1
1	A	243	LEU	2.1
1	A	84	SER	2.1
1	A	346	ARG	2.1
1	A	402	TYR	2.0
1	A	398	ASN	2.0
1	A	76	ASP	2.0

6.2 Non-standard residues in protein, DNA, RNA chains [i](#)

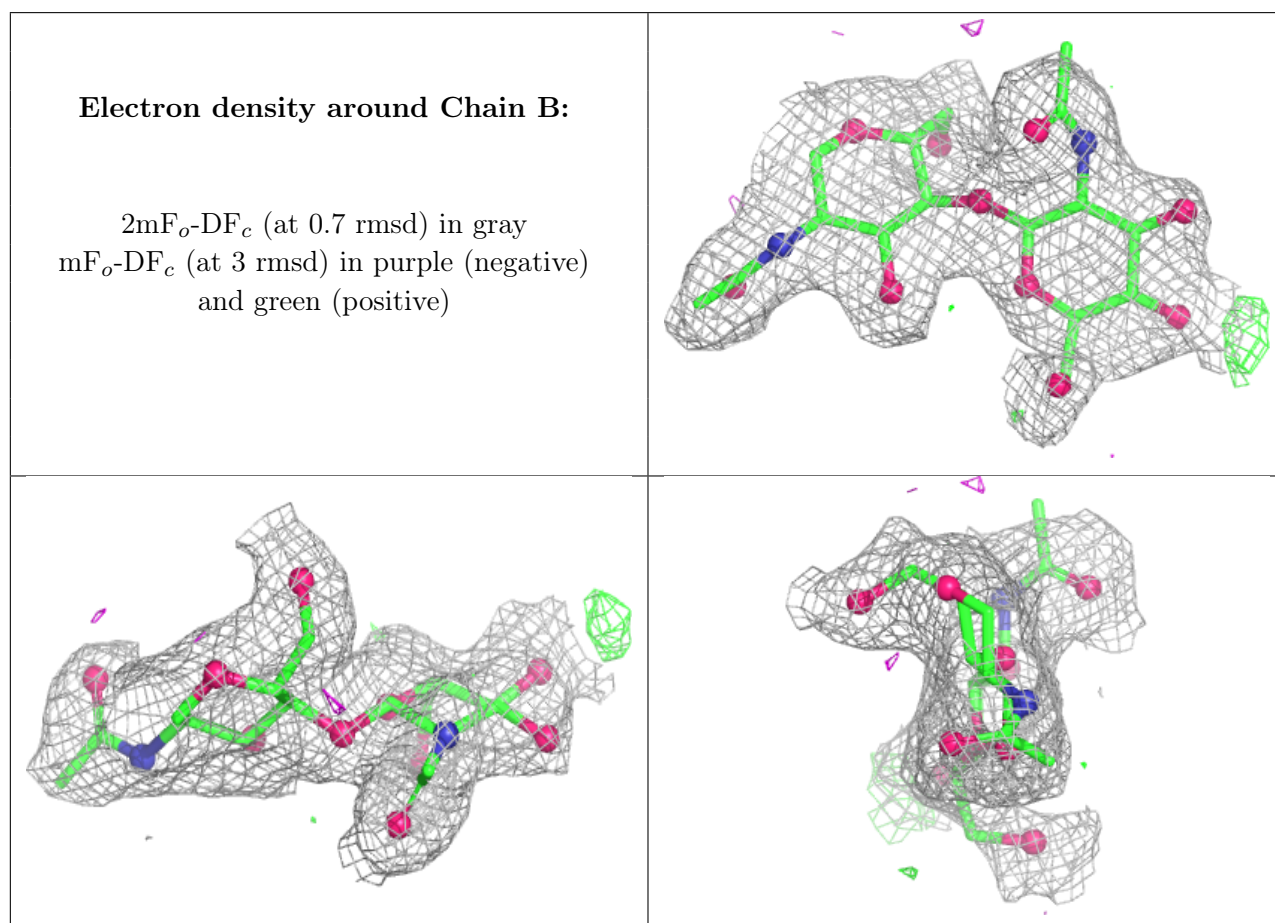
There are no non-standard protein/DNA/RNA residues in this entry.

6.3 Carbohydrates [i](#)

In the following table, the Atoms column lists the number of modelled atoms in the group and the number defined in the chemical component dictionary. The B-factors column lists the minimum, median, 95th percentile and maximum values of B factors of atoms in the group. The column labelled 'Q < 0.9' lists the number of atoms with occupancy less than 0.9.

Mol	Type	Chain	Res	Atoms	RSCC	RSR	B-factors(Å ²)	Q<0.9
2	NAG	B	2	14/15	0.84	0.12	21,32,37,38	0
2	NAG	B	1	14/15	0.94	0.07	9,15,18,22	0

The following is a graphical depiction of the model fit to experimental electron density for oligosaccharide. Each fit is shown from different orientation to approximate a three-dimensional view.

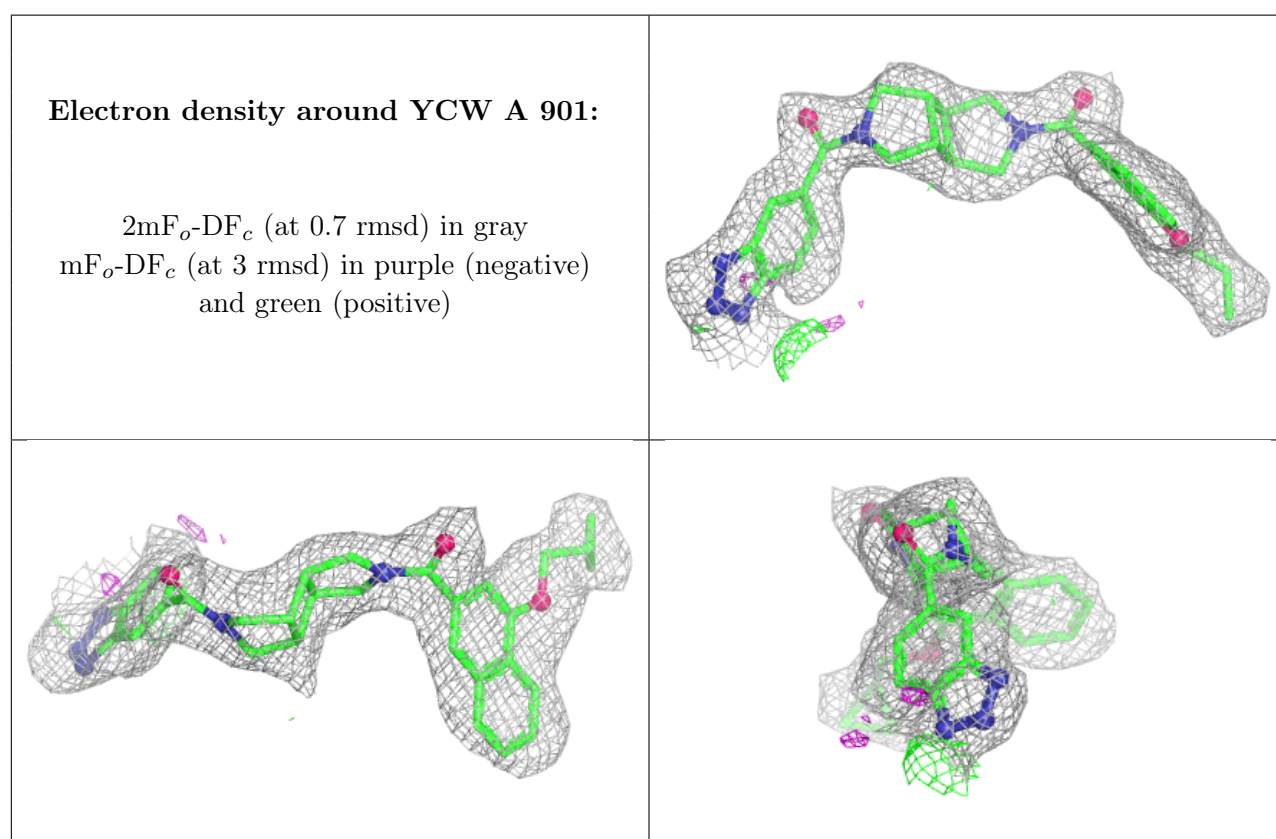


6.4 Ligands [i](#)

In the following table, the Atoms column lists the number of modelled atoms in the group and the number defined in the chemical component dictionary. The B-factors column lists the minimum, median, 95th percentile and maximum values of B factors of atoms in the group. The column labelled 'Q < 0.9' lists the number of atoms with occupancy less than 0.9.

Mol	Type	Chain	Res	Atoms	RSCC	RSR	B-factors(\AA^2)	Q<0.9
6	NA	A	905	1/1	0.64	0.18	42,42,42,42	0
6	NA	A	904	1/1	0.83	0.10	30,30,30,30	0
3	YCW	A	901	38/38	0.88	0.11	16,25,35,43	0
7	CL	A	906	1/1	0.95	0.12	28,28,28,28	0
5	CA	A	903	1/1	0.97	0.04	14,14,14,14	0
4	ZN	A	902	1/1	0.99	0.02	14,14,14,14	0

The following is a graphical depiction of the model fit to experimental electron density of all instances of the Ligand of Interest. In addition, ligands with molecular weight > 250 and outliers as shown on the geometry validation Tables will also be included. Each fit is shown from different orientation to approximate a three-dimensional view.



6.5 Other polymers [\(i\)](#)

There are no such residues in this entry.