



wwPDB NMR Structure Validation Summary Report ⓘ

Jun 6, 2023 – 02:43 pm BST

PDB ID : 6FZK
BMRB ID : 34246
Title : NMR structure of UB2H, regulatory domain of PBP1b from E. coli
Authors : Simorre, J.P.; Maya Martinez, R.C.; Bougault, C.; Egan, A.J.F.; Vollmer, W.
Deposited on : 2018-03-15

This is a wwPDB NMR Structure Validation Summary Report for a publicly released PDB entry.

We welcome your comments at validation@mail.wwpdb.org

A user guide is available at

<https://www.wwpdb.org/validation/2017/NMRValidationReportHelp>

with specific help available everywhere you see the ⓘ symbol.

The types of validation reports are described at

<http://www.wwpdb.org/validation/2017/FAQs#types>.

The following versions of software and data (see [references ⓘ](#)) were used in the production of this report:

MolProbity : 4.02b-467
Percentile statistics : 20191225.v01 (using entries in the PDB archive December 25th 2019)
wwPDB-RCI : v_1n_11_5_13_A (Berjanski et al., 2005)
PANAV : Wang et al. (2010)
wwPDB-ShiftChecker : v1.2
BMRB Restraints Analysis : v1.2
Ideal geometry (proteins) : Engh & Huber (2001)
Ideal geometry (DNA, RNA) : Parkinson et al. (1996)
Validation Pipeline (wwPDB-VP) : 2.33

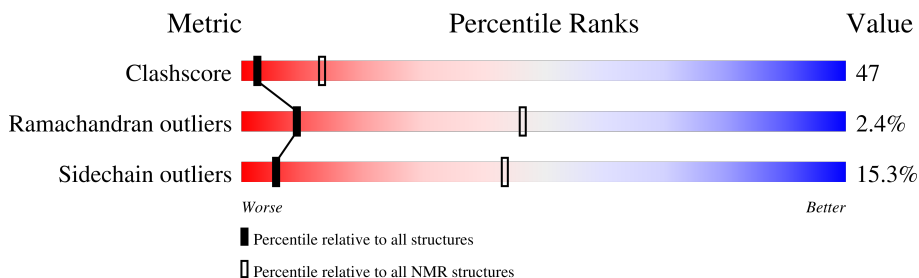
1 Overall quality at a glance

The following experimental techniques were used to determine the structure:

SOLUTION NMR

The overall completeness of chemical shifts assignment is 82%.

Percentile scores (ranging between 0-100) for global validation metrics of the entry are shown in the following graphic. The table shows the number of entries on which the scores are based.



Metric	Whole archive (#Entries)	NMR archive (#Entries)
Clashscore	158937	12864
Ramachandran outliers	154571	11451
Sidechain outliers	154315	11428

The table below summarises the geometric issues observed across the polymeric chains and their fit to the experimental data. The red, orange, yellow and green segments indicate the fraction of residues that contain outliers for ≥ 3 , 2, 1 and 0 types of geometric quality criteria. A cyan segment indicates the fraction of residues that are not part of the well-defined cores, and a grey segment represents the fraction of residues that are not modelled. The numeric value for each fraction is indicated below the corresponding segment, with a dot representing fractions $\leq 5\%$

Mol	Chain	Length	Quality of chain
1	A	114	

2 Ensemble composition and analysis i

This entry contains 20 models. Model 4 is the overall representative, medoid model (most similar to other models). The authors have identified model 1 as representative, based on the following criterion: *lowest energy*.

The following residues are included in the computation of the global validation metrics.

Well-defined (core) protein residues			
Well-defined core	Residue range (total)	Backbone RMSD (Å)	Medoid model
1	A:109-A:156, A:168-A:198 (79)	0.52	4

Ill-defined regions of proteins are excluded from the global statistics.

Ligands and non-protein polymers are included in the analysis.

The models can be grouped into 5 clusters and 2 single-model clusters were found.

Cluster number	Models
1	4, 9, 10, 11, 13, 14, 16, 18
2	7, 17, 20
3	5, 12, 19
4	3, 8
5	2, 15
Single-model clusters	1; 6

3 Entry composition

There is only 1 type of molecule in this entry. The entry contains 1826 atoms, of which 904 are hydrogens and 0 are deuteriums.

- Molecule 1 is a protein called Penicillin-binding protein 1B.

Mol	Chain	Residues	Atoms						Trace
			Total	C	H	N	O	S	
1	A	114	1826	568	904	178	168	8	0

There are 21 discrepancies between the modelled and reference sequences:

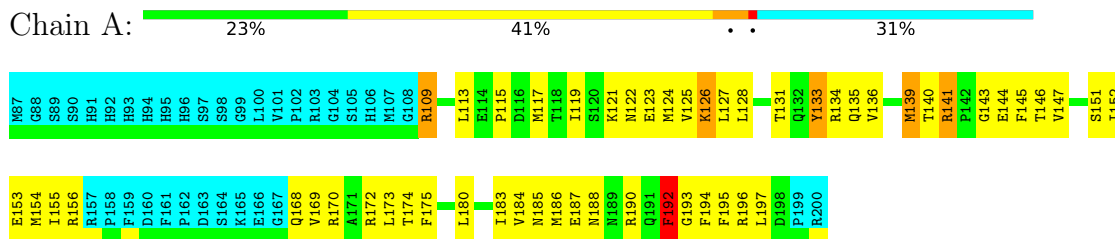
Chain	Residue	Modelled	Actual	Comment	Reference
A	87	MET	-	initiating methionine	UNP P02919
A	88	GLY	-	expression tag	UNP P02919
A	89	SER	-	expression tag	UNP P02919
A	90	SER	-	expression tag	UNP P02919
A	91	HIS	-	expression tag	UNP P02919
A	92	HIS	-	expression tag	UNP P02919
A	93	HIS	-	expression tag	UNP P02919
A	94	HIS	-	expression tag	UNP P02919
A	95	HIS	-	expression tag	UNP P02919
A	96	HIS	-	expression tag	UNP P02919
A	97	SER	-	expression tag	UNP P02919
A	98	SER	-	expression tag	UNP P02919
A	99	GLY	-	expression tag	UNP P02919
A	100	LEU	-	expression tag	UNP P02919
A	101	VAL	-	expression tag	UNP P02919
A	102	PRO	-	expression tag	UNP P02919
A	103	ARG	-	expression tag	UNP P02919
A	104	GLY	-	expression tag	UNP P02919
A	105	SER	-	expression tag	UNP P02919
A	106	HIS	-	expression tag	UNP P02919
A	107	MET	-	expression tag	UNP P02919

4 Residue-property plots [i](#)

4.1 Average score per residue in the NMR ensemble

These plots are provided for all protein, RNA, DNA and oligosaccharide chains in the entry. The first graphic is the same as shown in the summary in section 1 of this report. The second graphic shows the sequence where residues are colour-coded according to the number of geometric quality criteria for which they contain at least one outlier: green = 0, yellow = 1, orange = 2 and red = 3 or more. Stretches of 2 or more consecutive residues without any outliers are shown as green connectors. Residues which are classified as ill-defined in the NMR ensemble, are shown in cyan with an underline colour-coded according to the previous scheme. Residues which were present in the experimental sample, but not modelled in the final structure are shown in grey.

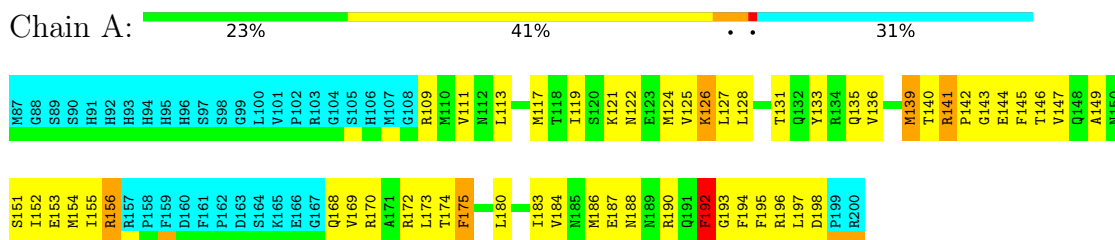
- Molecule 1: Penicillin-binding protein 1B



4.2 Residue scores for the representative (medoid) model from the NMR ensemble

The representative model is number 4. Colouring as in section 4.1 above.

- Molecule 1: Penicillin-binding protein 1B



5 Refinement protocol and experimental data overview

The models were refined using the following method: *simulated annealing*.

Of the 750 calculated structures, 20 were deposited, based on the following criterion: *20*.

The following table shows the software used for structure solution, optimisation and refinement.

Software name	Classification	Version
ARIA	structure calculation	2.3
CNS	refinement	1.2
UNIO	structure calculation	2.0.2

The following table shows chemical shift validation statistics as aggregates over all chemical shift files. Detailed validation can be found in section 7 of this report.

Chemical shift file(s)	working_cs.cif
Number of chemical shift lists	1
Total number of shifts	1098
Number of shifts mapped to atoms	1098
Number of unparsed shifts	0
Number of shifts with mapping errors	0
Number of shifts with mapping warnings	0
Assignment completeness (well-defined parts)	82%

6 Model quality i

6.1 Standard geometry i

The Z score for a bond length (or angle) is the number of standard deviations the observed value is removed from the expected value. A bond length (or angle) with $|Z| > 5$ is considered an outlier worth inspection. RMSZ is the (average) root-mean-square of all Z scores of the bond lengths (or angles).

Mol	Chain	Bond lengths		Bond angles	
		RMSZ	#Z>5	RMSZ	#Z>5
1	A	0.79±0.09	2±1/656 (0.2± 0.2%)	0.77±0.03	0±0/882 (0.0± 0.0%)
All	All	0.80	32/13120 (0.2%)	0.77	0/17640 (0.0%)

Chiral center outliers are detected by calculating the chiral volume of a chiral center and verifying if the center is modelled as a planar moiety or with the opposite hand. A planarity outlier is detected by checking planarity of atoms in a peptide group, atoms in a mainchain group or atoms of a sidechain that are expected to be planar.

Mol	Chain	Chirality	Planarity
1	A	0.0±0.0	0.9±0.4
All	All	0	19

5 of 6 unique bond outliers are listed below. They are sorted according to the Z-score of the worst occurrence in the ensemble.

Mol	Chain	Res	Type	Atoms	Z	Observed(Å)	Ideal(Å)	Models	
								Worst	Total
1	A	133	TYR	CE1-CZ	11.61	1.53	1.38	2	10
1	A	133	TYR	CE2-CZ	-10.83	1.24	1.38	2	10
1	A	192	PHE	CE1-CZ	6.60	1.49	1.37	8	5
1	A	175	PHE	CE1-CZ	6.34	1.49	1.37	4	5
1	A	175	PHE	CE2-CZ	-5.22	1.27	1.37	4	1

There are no bond-angle outliers.

There are no chirality outliers.

All unique planar outliers are listed below. They are sorted by the frequency of occurrence in the ensemble.

Mol	Chain	Res	Type	Group	Models (Total)
1	A	192	PHE	Peptide	16
1	A	139	MET	Peptide	1
1	A	133	TYR	Sidechain	1

Continued on next page...

Continued from previous page...

Mol	Chain	Res	Type	Group	Models (Total)
1	A	193	GLY	Peptide	1

6.2 Too-close contacts [i](#)

In the following table, the Non-H and H(model) columns list the number of non-hydrogen atoms and hydrogen atoms in each chain respectively. The H(added) column lists the number of hydrogen atoms added and optimized by MolProbity. The Clashes column lists the number of clashes averaged over the ensemble.

Mol	Chain	Non-H	H(model)	H(added)	Clashes
1	A	647	651	650	61±8
All	All	12940	13020	13000	1213

The all-atom clashscore is defined as the number of clashes found per 1000 atoms (including hydrogen atoms). The all-atom clashscore for this structure is 47.

5 of 328 unique clashes are listed below, sorted by their clash magnitude.

Atom-1	Atom-2	Clash(Å)	Distance(Å)	Models	
				Worst	Total
1:A:133:TYR:CE1	1:A:144:GLU:HG2	0.89	2.02	7	4
1:A:170:ARG:HG2	1:A:186:MET:HE3	0.88	1.45	13	2
1:A:121:LYS:HA	1:A:124:MET:SD	0.87	2.09	18	2
1:A:122:ASN:O	1:A:125:VAL:HG12	0.85	1.71	6	20
1:A:145:PHE:HB2	1:A:153:GLU:O	0.79	1.76	6	15

6.3 Torsion angles [i](#)

6.3.1 Protein backbone [i](#)

In the following table, the Percentiles column shows the percent Ramachandran outliers of the chain as a percentile score with respect to all PDB entries followed by that with respect to all NMR entries. The Analysed column shows the number of residues for which the backbone conformation was analysed and the total number of residues.

Mol	Chain	Analysed	Favoured	Allowed	Outliers	Percentiles	
1	A	79/114 (69%)	67±2 (85±3%)	10±2 (13±2%)	2±1 (2±1%)	9	46
All	All	1580/2280 (69%)	1337 (85%)	205 (13%)	38 (2%)	9	46

5 of 6 unique Ramachandran outliers are listed below. They are sorted by the frequency of occurrence in the ensemble.

Mol	Chain	Res	Type	Models (Total)
1	A	193	GLY	12
1	A	109	ARG	10
1	A	115	PRO	8
1	A	149	ALA	6
1	A	116	ASP	1

6.3.2 Protein sidechains [i](#)

In the following table, the Percentiles column shows the percent sidechain outliers of the chain as a percentile score with respect to all PDB entries followed by that with respect to all NMR entries. The Analysed column shows the number of residues for which the sidechain conformation was analysed and the total number of residues.

Mol	Chain	Analysed	Rotameric	Outliers	Percentiles
1	A	72/102 (71%)	61±2 (85±3%)	11±2 (15±3%)	6 43
All	All	1440/2040 (71%)	1220 (85%)	220 (15%)	6 43

5 of 38 unique residues with a non-rotameric sidechain are listed below. They are sorted by the frequency of occurrence in the ensemble.

Mol	Chain	Res	Type	Models (Total)
1	A	141	ARG	20
1	A	174	THR	20
1	A	139	MET	18
1	A	126	LYS	14
1	A	192	PHE	14

6.3.3 RNA [i](#)

There are no RNA molecules in this entry.

6.4 Non-standard residues in protein, DNA, RNA chains [i](#)

There are no non-standard protein/DNA/RNA residues in this entry.

6.5 Carbohydrates [i](#)

There are no monosaccharides in this entry.

6.6 Ligand geometry [i](#)

There are no ligands in this entry.

6.7 Other polymers [i](#)

There are no such molecules in this entry.

6.8 Polymer linkage issues [i](#)

There are no chain breaks in this entry.

7 Chemical shift validation [i](#)

The completeness of assignment taking into account all chemical shift lists is 82% for the well-defined parts and 69% for the entire structure.

7.1 Chemical shift list 1

File name: working_cs.cif

Chemical shift list name: *UB2H_dep_2018.str*

7.1.1 Bookkeeping [i](#)

The following table shows the results of parsing the chemical shift list and reports the number of nuclei with statistically unusual chemical shifts.

Total number of shifts	1098
Number of shifts mapped to atoms	1098
Number of unparsed shifts	0
Number of shifts with mapping errors	0
Number of shifts with mapping warnings	0
Number of shift outliers (ShiftChecker)	0

7.1.2 Chemical shift referencing [i](#)

The following table shows the suggested chemical shift referencing corrections.

Nucleus	# values	Correction \pm precision, ppm	Suggested action
$^{13}\text{C}_\alpha$	95	-0.03 ± 0.18	None needed (< 0.5 ppm)
$^{13}\text{C}_\beta$	89	-0.22 ± 0.18	None needed (< 0.5 ppm)
$^{13}\text{C}'$	85	-0.12 ± 0.22	None needed (< 0.5 ppm)
^{15}N	85	-1.22 ± 0.21	Should be applied

7.1.3 Completeness of resonance assignments [i](#)

The following table shows the completeness of the chemical shift assignments for the well-defined regions of the structure. The overall completeness is 82%, i.e. 939 atoms were assigned a chemical shift out of a possible 1144. 0 out of 12 assigned methyl groups (LEU and VAL) were assigned stereospecifically.

	Total	^1H	^{13}C	^{15}N
Backbone	373/394 (95%)	150/159 (94%)	152/158 (96%)	71/77 (92%)
Sidechain	510/683 (75%)	344/440 (78%)	166/205 (81%)	0/38 (0%)

Continued on next page...

Continued from previous page...

	Total	¹ H	¹³ C	¹⁵ N
Aromatic	56/67 (84%)	28/33 (85%)	28/32 (88%)	0/2 (0%)
Overall	939/1144 (82%)	522/632 (83%)	346/395 (88%)	71/117 (61%)

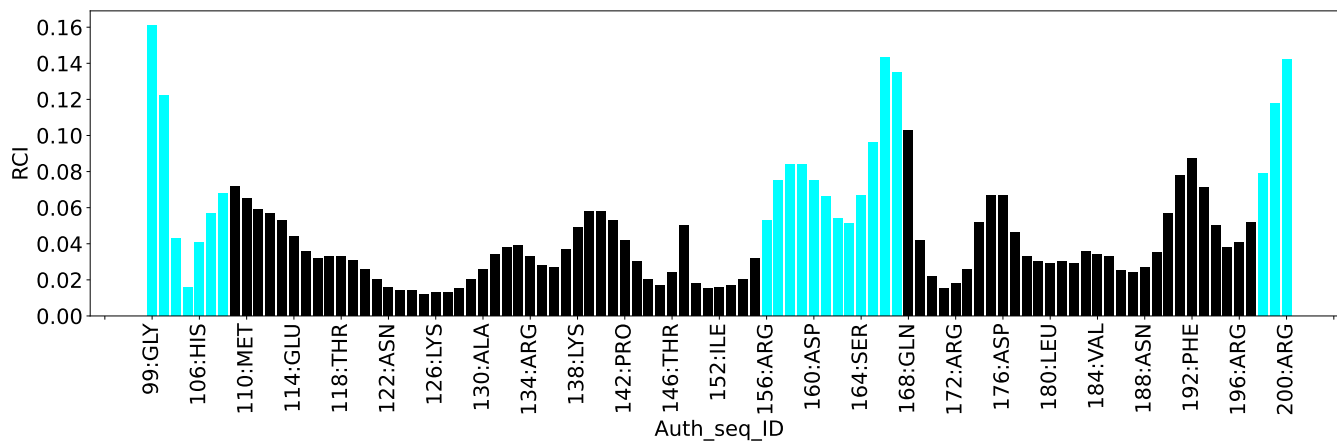
7.1.4 Statistically unusual chemical shifts [i](#)

There are no statistically unusual chemical shifts.

7.1.5 Random Coil Index (RCI) plots [i](#)

The image below reports *random coil index* values for the protein chains in the structure. The height of each bar gives a probability of a given residue to be disordered, as predicted from the available chemical shifts and the amino acid sequence. A value above 0.2 is an indication of significant predicted disorder. The colour of the bar shows whether the residue is in the well-defined core (black) or in the ill-defined residue ranges (cyan), as described in section 2 on ensemble composition. If well-defined core and ill-defined regions are not identified then it is shown as gray bars.

Random coil index (RCI) for chain A:



8 NMR restraints analysis

8.1 Conformationally restricting restraints

The following table provides the summary of experimentally observed NMR restraints in different categories. Restraints are classified into different categories based on the sequence separation of the atoms involved.

Description	Value
Total distance restraints	1974
Intra-residue ($ i-j =0$)	693
Sequential ($ i-j =1$)	457
Medium range ($ i-j >1$ and $ i-j <5$)	258
Long range ($ i-j \geq 5$)	566
Inter-chain	0
Hydrogen bond restraints	0
Disulfide bond restraints	0
Total dihedral-angle restraints	0
Number of unmapped restraints	0
Number of restraints per residue	17.3
Number of long range restraints per residue ¹	5.0

¹Long range hydrogen bonds and disulfide bonds are counted as long range restraints while calculating the number of long range restraints per residue

8.2 Residual restraint violations

This section provides the overview of the restraint violations analysis. The violations are binned as small, medium and large violations based on its absolute value. Average number of violations per model is calculated by dividing the total number of violations in each bin by the size of the ensemble.

8.2.1 Average number of distance violations per model

Distance violations less than 0.1 Å are not included in the calculation.

Bins (Å)	Average number of violations per model	Max (Å)
0.1-0.2 (Small)	114.5	0.2
0.2-0.5 (Medium)	138.3	0.5
>0.5 (Large)	74.3	3.95

8.2.2 Average number of dihedral-angle violations per model

Dihedral-angle violations less than 1° are not included in the calculation. There are no dihedral-angle violations

9 Distance violation analysis i

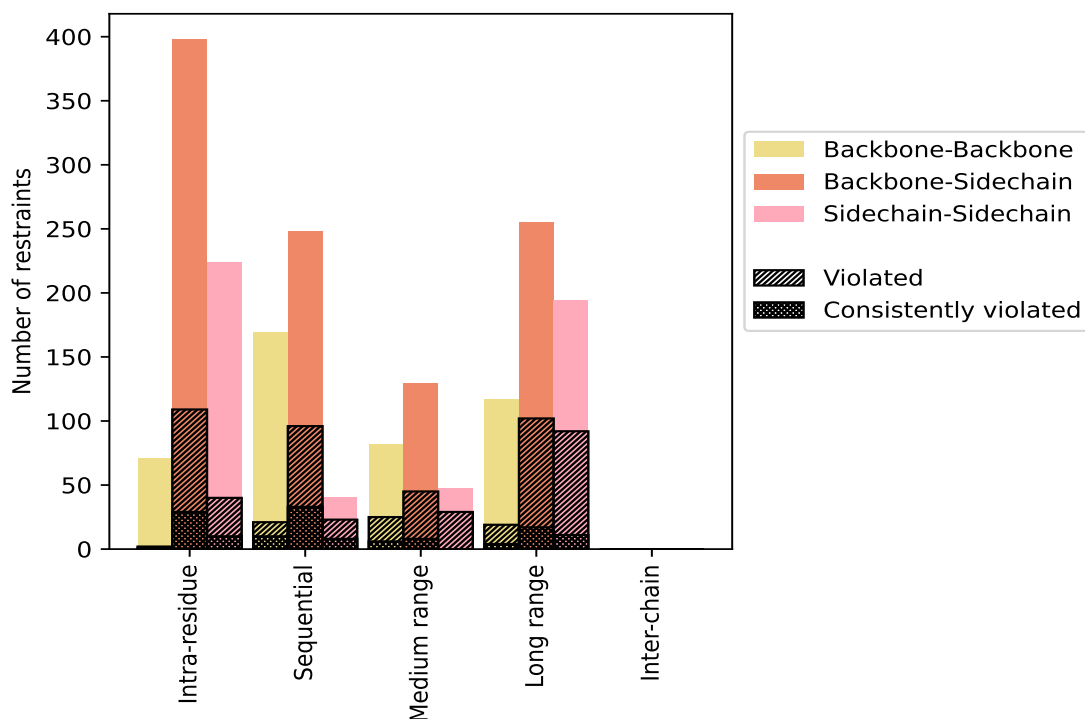
9.1 Summary of distance violations i

The following table shows the summary of distance violations in different restraint categories based on the sequence separation of the atoms involved. Each category is further sub-divided into three sub-categories based on the atoms involved. Violations less than 0.1 Å are not included in the statistics.

Restrains type	Count	% ¹	Violated ³			Consistently Violated ⁴		
			Count	% ²	% ¹	Count	% ²	% ¹
Intra-residue ($i-j =0$)	693	35.1	151	21.8	7.6	40	5.8	2.0
Backbone-Backbone	71	3.6	2	2.8	0.1	1	1.4	0.1
Backbone-Sidechain	398	20.2	109	27.4	5.5	29	7.3	1.5
Sidechain-Sidechain	224	11.3	40	17.9	2.0	10	4.5	0.5
Sequential ($i-j =1$)	457	23.2	140	30.6	7.1	51	11.2	2.6
Backbone-Backbone	169	8.6	21	12.4	1.1	10	5.9	0.5
Backbone-Sidechain	248	12.6	96	38.7	4.9	33	13.3	1.7
Sidechain-Sidechain	40	2.0	23	57.5	1.2	8	20.0	0.4
Medium range ($i-j >1$ & $i-j <5$)	258	13.1	99	38.4	5.0	14	5.4	0.7
Backbone-Backbone	82	4.2	25	30.5	1.3	6	7.3	0.3
Backbone-Sidechain	129	6.5	45	34.9	2.3	8	6.2	0.4
Sidechain-Sidechain	47	2.4	29	61.7	1.5	0	0.0	0.0
Long range ($i-j \geq 5$)	566	28.7	213	37.6	10.8	32	5.7	1.6
Backbone-Backbone	117	5.9	19	16.2	1.0	4	3.4	0.2
Backbone-Sidechain	255	12.9	102	40.0	5.2	17	6.7	0.9
Sidechain-Sidechain	194	9.8	92	47.4	4.7	11	5.7	0.6
Inter-chain	0	0.0	0	0.0	0.0	0	0.0	0.0
Backbone-Backbone	0	0.0	0	0.0	0.0	0	0.0	0.0
Backbone-Sidechain	0	0.0	0	0.0	0.0	0	0.0	0.0
Sidechain-Sidechain	0	0.0	0	0.0	0.0	0	0.0	0.0
Hydrogen bond	0	0.0	0	0.0	0.0	0	0.0	0.0
Disulfide bond	0	0.0	0	0.0	0.0	0	0.0	0.0
Total	1974	100.0	603	30.5	30.5	137	6.9	6.9
Backbone-Backbone	439	22.2	67	15.3	3.4	21	4.8	1.1
Backbone-Sidechain	1030	52.2	352	34.2	17.8	87	8.4	4.4
Sidechain-Sidechain	505	25.6	184	36.4	9.3	29	5.7	1.5

¹ percentage calculated with respect to the total number of distance restraints, ² percentage calculated with respect to the number of restraints in a particular restraint category, ³ violated in at least one model, ⁴ violated in all the models

9.1.1 Bar chart : Distribution of distance restraints and violations [i](#)



Violated and consistently violated restraints are shown using different hatch patterns in their respective categories. The hydrogen bonds and disulfid bonds are counted in their appropriate category on the x-axis

9.2 Distance violation statistics for each model [i](#)

The following table provides the distance violation statistics for each model in the ensemble. Violations less than 0.1 Å are not included in the statistics.

Model ID	Number of violations						Mean (Å)	Max (Å)	SD ⁶ (Å)	Median (Å)
	IR ¹	SQ ²	MR ³	LR ⁴	IC ⁵	Total				
1	82	90	54	100	0	326	0.47	3.95	0.51	0.28
2	85	93	57	122	0	357	0.51	2.51	0.5	0.29
3	95	88	52	97	0	332	0.39	2.48	0.35	0.26
4	93	84	54	93	0	324	0.4	2.48	0.38	0.25
5	96	88	55	97	0	336	0.41	2.52	0.4	0.26
6	88	92	47	91	0	318	0.42	2.46	0.41	0.26
7	89	93	52	92	0	326	0.41	2.08	0.37	0.26
8	92	91	49	92	0	324	0.39	2.0	0.34	0.25
9	84	90	54	95	0	323	0.44	2.43	0.42	0.28
10	86	84	51	103	0	324	0.4	1.86	0.36	0.27
11	87	88	46	92	0	313	0.41	2.58	0.38	0.27

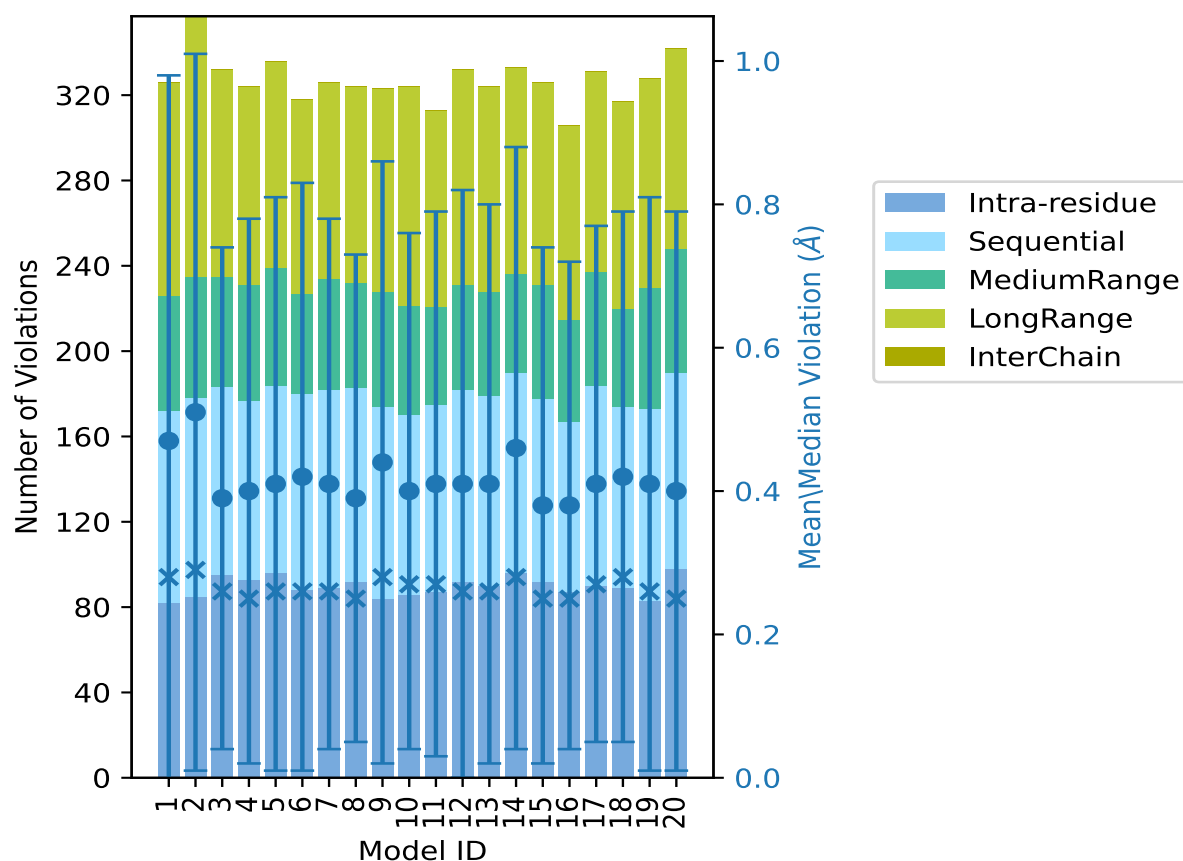
Continued on next page...

Continued from previous page...

Model ID	Number of violations					Total	Mean (Å)	Max (Å)	SD ⁶ (Å)	Median (Å)
	IR ¹	SQ ²	MR ³	LR ⁴	IC ⁵					
12	92	90	49	101	0	332	0.41	3.42	0.41	0.26
13	90	89	49	96	0	324	0.41	2.08	0.39	0.26
14	96	94	46	97	0	333	0.46	2.2	0.42	0.28
15	92	86	53	95	0	326	0.38	2.35	0.36	0.25
16	87	80	48	91	0	306	0.38	1.95	0.34	0.25
17	90	94	53	94	0	331	0.41	2.08	0.36	0.27
18	89	85	46	97	0	317	0.42	2.06	0.37	0.28
19	83	90	57	98	0	328	0.41	2.49	0.4	0.26
20	98	92	58	94	0	342	0.4	2.5	0.39	0.25

¹Intra-residue restraints, ²Sequential restraints, ³Medium range restraints, ⁴Long range restraints, ⁵Inter-chain restraints, ⁶Standard deviation

9.2.1 Bar graph : Distance Violation statistics for each model [\(i\)](#)



The mean(dot), median(x) and the standard deviation are shown in blue with respect to the y axis on the right

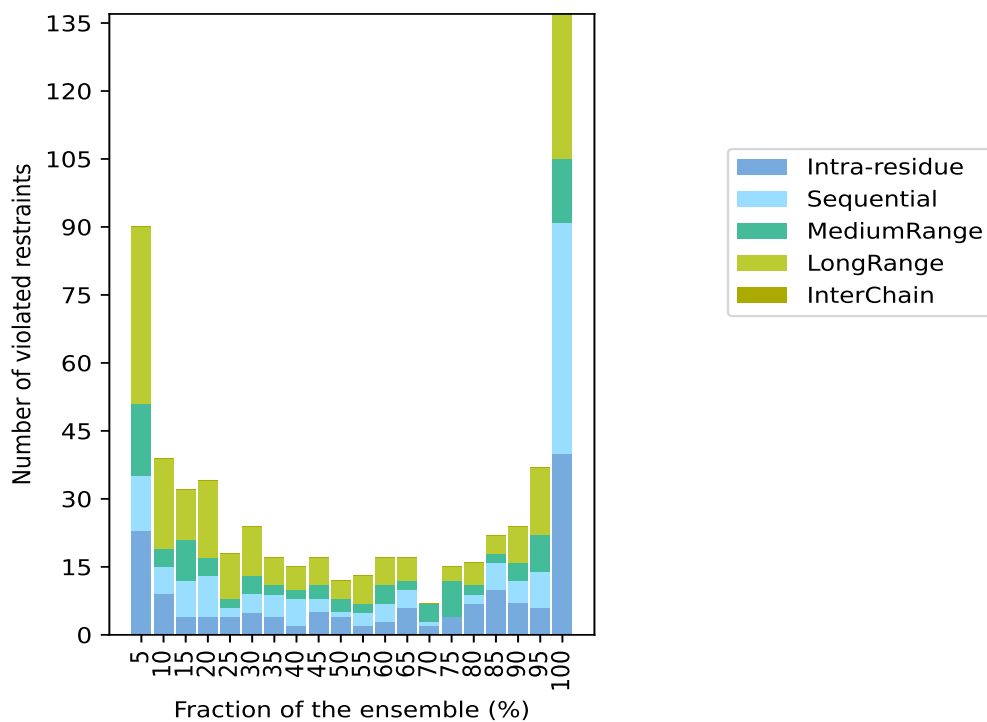
9.3 Distance violation statistics for the ensemble

Violation analysis may find that some restraints are violated in few models and some are violated in most of models. The following table provides this information as number of violated restraints for a given fraction of the ensemble. In total, 1371(IR:542, SQ:317, MR:159, LR:353, IC:0) restraints are not violated in the ensemble.

Number of violated restraints						Fraction of the ensemble	
IR ¹	SQ ²	MR ³	LR ⁴	IC ⁵	Total	Count ⁶	%
23	12	16	39	0	90	1	5.0
9	6	4	20	0	39	2	10.0
4	8	9	11	0	32	3	15.0
4	9	4	17	0	34	4	20.0
4	2	2	10	0	18	5	25.0
5	4	4	11	0	24	6	30.0
4	5	2	6	0	17	7	35.0
2	6	2	5	0	15	8	40.0
5	3	3	6	0	17	9	45.0
4	1	3	4	0	12	10	50.0
2	3	2	6	0	13	11	55.0
3	4	4	6	0	17	12	60.0
6	4	2	5	0	17	13	65.0
2	1	4	0	0	7	14	70.0
4	0	8	3	0	15	15	75.0
7	2	2	5	0	16	16	80.0
10	6	2	4	0	22	17	85.0
7	5	4	8	0	24	18	90.0
6	8	8	15	0	37	19	95.0
40	51	14	32	0	137	20	100.0

¹Intra-residue restraints, ²Sequential restraints, ³Medium range restraints, ⁴Long range restraints, ⁵Inter-chain restraints, ⁶ Number of models with violations

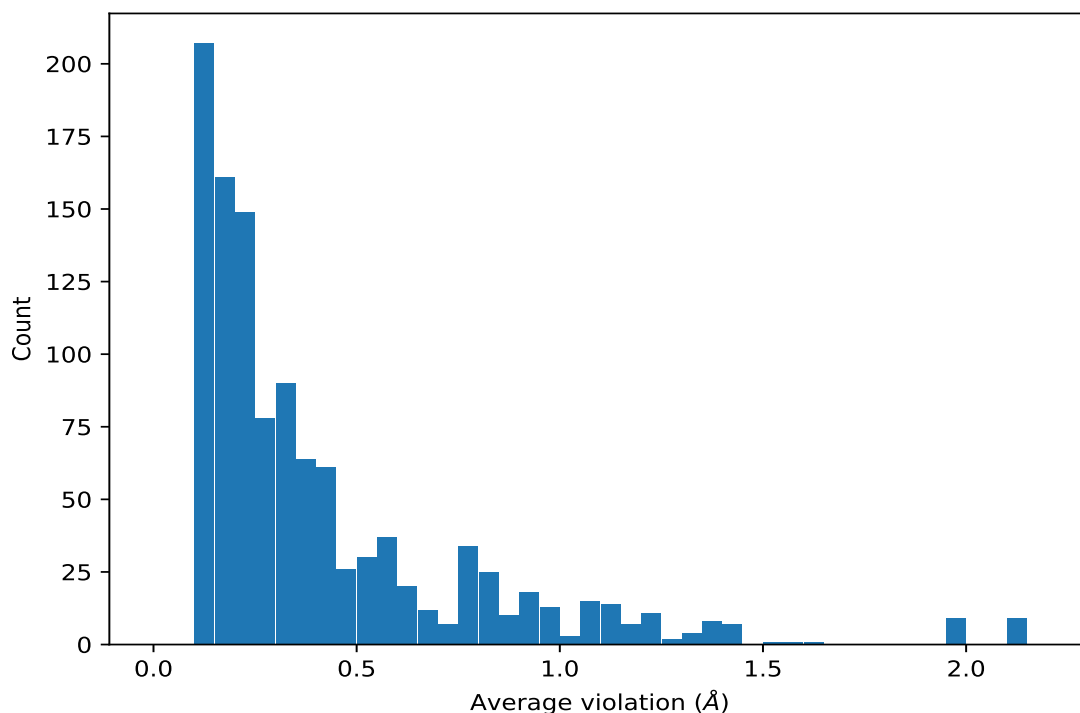
9.3.1 Bar graph : Distance violation statistics for the ensemble [\(i\)](#)



9.4 Most violated distance restraints in the ensemble [\(i\)](#)

9.4.1 Histogram : Distribution of mean distance violations [\(i\)](#)

The following histogram shows the distribution of the average value of the violation. The average is calculated for each restraint that is violated in more than one model over all the violated models in the ensemble



9.4.2 Table: Most violated distance restraints [i](#)

The following table provides the mean and the standard deviation of the violations for the 10 worst performing restraints, sorted by number of violated models and the mean violation value. The Key (restraint list ID, restraint ID) is the unique identifier for a given restraint. Rows with same key represent combinatorial or ambiguous restraints and are counted as a single restraint.

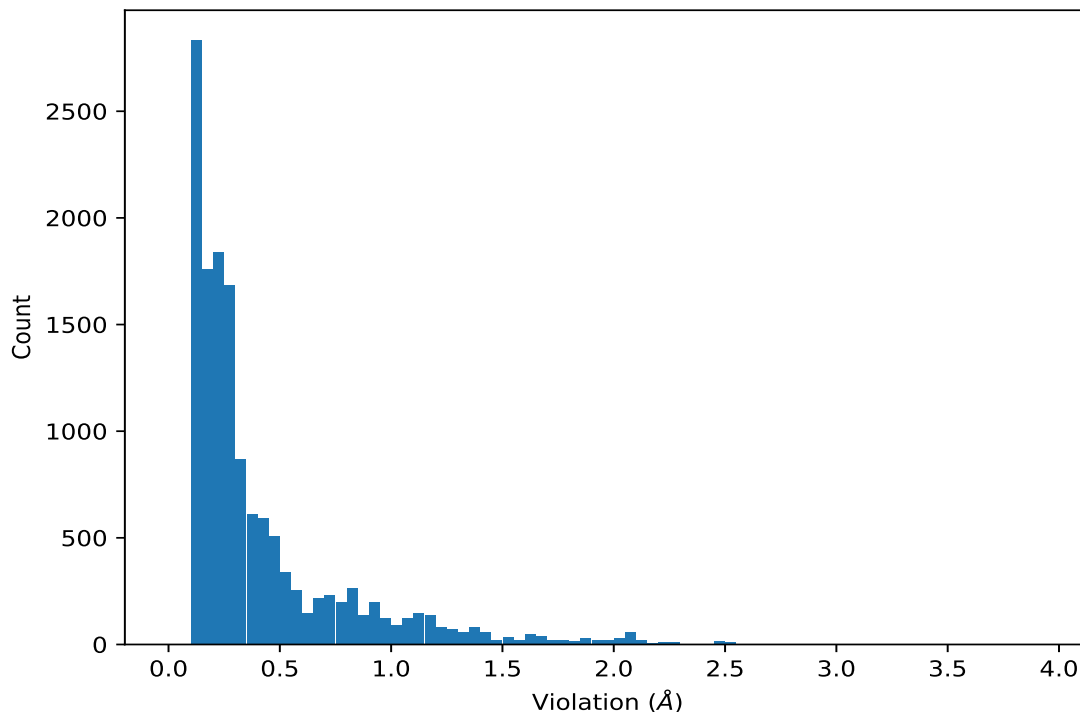
Key	Atom-1	Atom-2	Models ¹	Mean (Å)	SD ¹ (Å)	Median (Å)
(1,1255)	1:A:179:HIS:HB2	1:A:178:ASP:HB3	20	1.65	0.04	1.65
(1,1088)	1:A:133:TYR:HB3	1:A:128:LEU:HB2	20	1.56	0.09	1.58
(1,1080)	1:A:192:PHE:HB3	1:A:184:VAL:H	20	1.52	0.14	1.54
(1,1019)	1:A:196:ARG:HD2	1:A:195:PHE:HB2	20	1.44	0.68	1.42
(2,169)	1:A:163:ASP:HB2	1:A:162:PRO:HB3	20	1.36	0.12	1.31
(2,169)	1:A:163:ASP:HB3	1:A:162:PRO:HB3	20	1.36	0.12	1.31
(1,699)	1:A:182:THR:HB	1:A:191:GLN:HG3	20	1.31	0.43	1.25
(1,1011)	1:A:167:GLY:HA3	1:A:168:GLN:HB2	20	1.29	0.52	1.26
(1,1302)	1:A:128:LEU:H	1:A:129:GLU:HB3	20	1.24	0.52	1.21
(1,999)	1:A:143:GLY:HA3	1:A:159:PHE:HZ	20	1.18	0.2	1.23
(1,1350)	1:A:135:GLN:HB3	1:A:145:PHE:HZ	20	1.15	0.12	1.16

¹Number of violated models, ²Standard deviation

9.5 All violated distance restraints [i](#)

9.5.1 Histogram : Distribution of distance violations [i](#)

The following histogram shows the distribution of the absolute value of the violation for all violated restraints in the ensemble.



9.5.2 Table : All distance violations [i](#)

The following table provides the 10 worst performing restraints, sorted by the violation value. The Key (restraint list ID, restraint ID) is the unique identifier for a given restraint. Rows with same key represent combinatorial or ambiguous restraints and are counted as a single restraint.

Key	Atom-1	Atom-2	Model ID	Violation (Å)
(2,109)	1:A:129:GLU:HA	1:A:200:ARG:HG2	1	3.95
(2,109)	1:A:129:GLU:HA	1:A:200:ARG:HG3	1	3.95
(1,832)	1:A:156:ARG:HA	1:A:159:PHE:HZ	12	3.42
(1,1640)	1:A:159:PHE:HE1	1:A:198:ASP:HB3	1	3.17
(1,1640)	1:A:159:PHE:HE2	1:A:198:ASP:HB3	1	3.17
(1,1030)	1:A:190:ARG:HD2	1:A:185:ASN:HB3	11	2.58
(1,1382)	1:A:127:LEU:HD22	1:A:124:MET:HB2	12	2.54
(1,1382)	1:A:127:LEU:HD23	1:A:124:MET:HB2	12	2.54
(1,1382)	1:A:127:LEU:HD21	1:A:124:MET:HB2	12	2.54
(1,1382)	1:A:127:LEU:HD22	1:A:124:MET:HB2	5	2.52
(1,1382)	1:A:127:LEU:HD23	1:A:124:MET:HB2	5	2.52

Continued on next page...

Continued from previous page...

Key	Atom-1	Atom-2	Model ID	Violation (Å)
(1,1382)	1:A:127:LEU:HD21	1:A:124:MET:HB2	5	2.52
(1,1030)	1:A:190:ARG:HD2	1:A:185:ASN:HB3	2	2.51
(1,36)	1:A:135:GLN:H	1:A:136:VAL:HB	2	2.5
(1,1382)	1:A:127:LEU:HD22	1:A:124:MET:HB2	20	2.5
(1,1382)	1:A:127:LEU:HD23	1:A:124:MET:HB2	20	2.5
(1,1382)	1:A:127:LEU:HD21	1:A:124:MET:HB2	20	2.5
(1,1382)	1:A:127:LEU:HD22	1:A:124:MET:HB2	19	2.49

10 Dihedral-angle violation analysis

Dihedral angle analysis failed due to data error in the dihedral angle restraints, possibly missing target value