



Full wwPDB X-ray Structure Validation Report ⓘ

Oct 15, 2023 – 07:45 PM EDT

PDB ID : 8FVA
Title : E coli. CTP synthase in complex with F-araCTP
Authors : Holyoak, T.; McLeod, M.J.; Tran, N.
Deposited on : 2023-01-18
Resolution : 2.40 Å(reported)

This is a Full wwPDB X-ray Structure Validation Report for a publicly released PDB entry.

We welcome your comments at validation@mail.wwpdb.org

A user guide is available at

<https://www.wwpdb.org/validation/2017/XrayValidationReportHelp>

with specific help available everywhere you see the ⓘ symbol.

The types of validation reports are described at

<http://www.wwpdb.org/validation/2017/FAQs#types>.

The following versions of software and data (see [references ⓘ](#)) were used in the production of this report:

MolProbity : 4.02b-467
Mogul : 1.8.5 (274361), CSD as541be (2020)
Xtriage (Phenix) : 1.13
EDS : 2.36
buster-report : 1.1.7 (2018)
Percentile statistics : 20191225.v01 (using entries in the PDB archive December 25th 2019)
Refmac : 5.8.0158
CCP4 : 7.0.044 (Gargrove)
Ideal geometry (proteins) : Engh & Huber (2001)
Ideal geometry (DNA, RNA) : Parkinson et al. (1996)
Validation Pipeline (wwPDB-VP) : 2.36

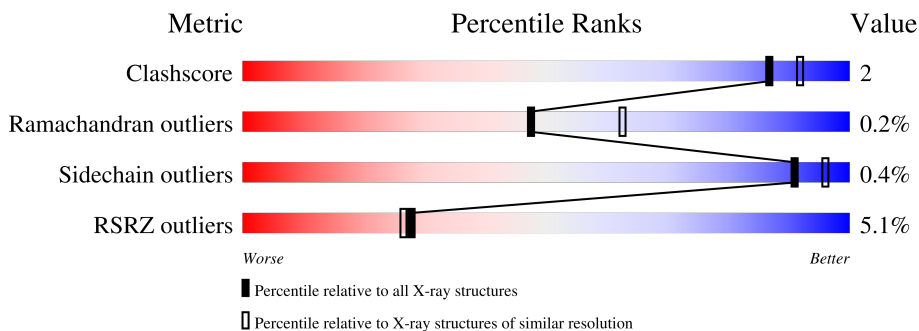
1 Overall quality at a glance

The following experimental techniques were used to determine the structure:

X-RAY DIFFRACTION

The reported resolution of this entry is 2.40 Å.

Percentile scores (ranging between 0-100) for global validation metrics of the entry are shown in the following graphic. The table shows the number of entries on which the scores are based.



Metric	Whole archive (#Entries)	Similar resolution (#Entries, resolution range(Å))
Clashscore	141614	4398 (2.40-2.40)
Ramachandran outliers	138981	4318 (2.40-2.40)
Sidechain outliers	138945	4319 (2.40-2.40)
RSRZ outliers	127900	3811 (2.40-2.40)

The table below summarises the geometric issues observed across the polymeric chains and their fit to the electron density. The red, orange, yellow and green segments of the lower bar indicate the fraction of residues that contain outliers for ≥ 3 , 2, 1 and 0 types of geometric quality criteria respectively. A grey segment represents the fraction of residues that are not modelled. The numeric value for each fraction is indicated below the corresponding segment, with a dot representing fractions $\leq 5\%$. The upper red bar (where present) indicates the fraction of residues that have poor fit to the electron density. The numeric value is given above the bar.

Mol	Chain	Length	Quality of chain
1	AAA	545	4% 92% 6% .
1	BBB	545	6% 93% 5% .

The following table lists non-polymeric compounds, carbohydrate monomers and non-standard residues in protein, DNA, RNA chains that are outliers for geometric or electron-density-fit criteria:

Mol	Type	Chain	Res	Chirality	Geometry	Clashes	Electron density
2	MLA	AAA	601	-	-	-	X

2 Entry composition [i](#)

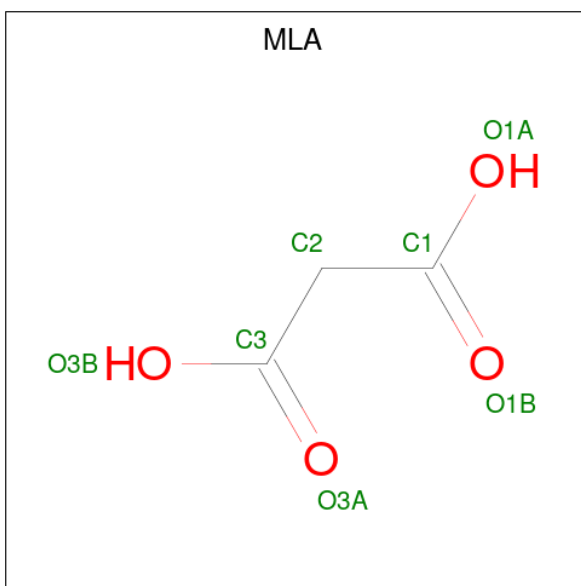
There are 5 unique types of molecules in this entry. The entry contains 8684 atoms, of which 0 are hydrogens and 0 are deuteriums.

In the tables below, the ZeroOcc column contains the number of atoms modelled with zero occupancy, the AltConf column contains the number of residues with at least one atom in alternate conformation and the Trace column contains the number of residues modelled with at most 2 atoms.

- Molecule 1 is a protein called CTP synthase.

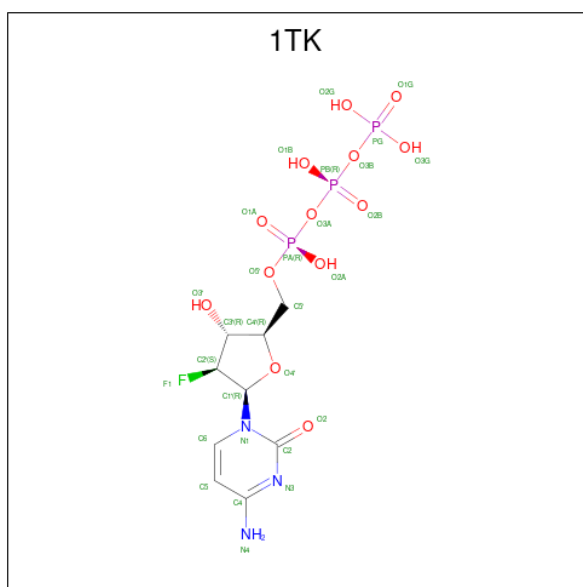
Mol	Chain	Residues	Atoms					ZeroOcc	AltConf	Trace
			Total	C	N	O	S			
1	AAA	534	Total 4221	C 2671	N 737	O 791	S 22	0	9	0
1	BBB	534	Total 4183	C 2646	N 730	O 786	S 21	0	3	0

- Molecule 2 is MALONIC ACID (three-letter code: MLA) (formula: C₃H₄O₄).



Mol	Chain	Residues	Atoms			ZeroOcc	AltConf
			Total	C	O		
2	AAA	1	Total 7	C 3	O 4	0	0

- Molecule 3 is 4-amino-1-{2-deoxy-2-fluoro-5-O-[(R)-hydroxy{[(R)-hydroxy(phosphonoxy)phosphoryl]oxy}phosphoryl]-beta-D-arabinofuranosyl}pyrimidin-2(1H)-one (three-letter code: 1TK) (formula: C₉H₁₅FN₃O₁₃P₃) (labeled as "Ligand of Interest" by depositor).



Mol	Chain	Residues	Atoms					ZeroOcc	AltConf	
			Total	C	F	N	O			P
3	AAA	1	29	9	1	3	13	3	0	0
3	BBB	1	29	9	1	3	13	3	0	0

- Molecule 4 is SODIUM ION (three-letter code: NA) (formula: Na).

Mol	Chain	Residues	Atoms		ZeroOcc	AltConf
			Total	Na		
4	AAA	1	1	1	0	0
4	BBB	1	1	1	0	0

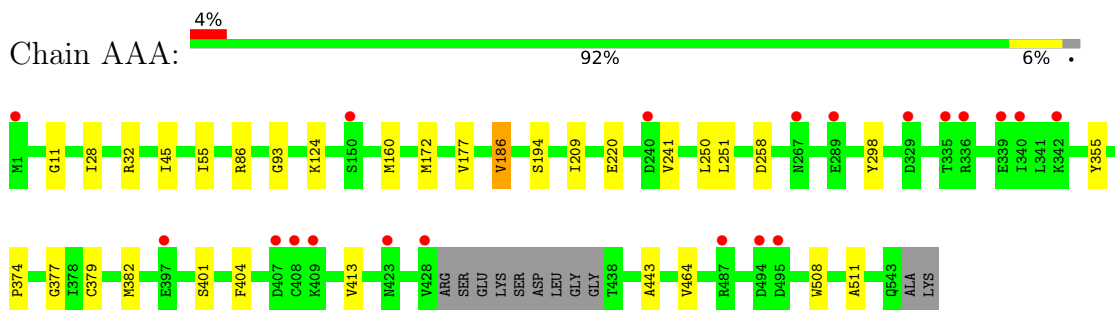
- Molecule 5 is water.

Mol	Chain	Residues	Atoms		ZeroOcc	AltConf
			Total	O		
5	AAA	116	116	116	0	0
5	BBB	97	97	97	0	0

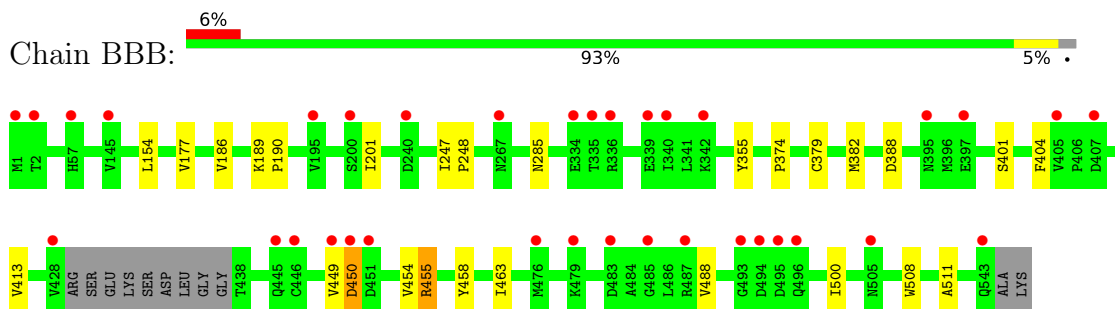
3 Residue-property plots [i](#)

These plots are drawn for all protein, RNA, DNA and oligosaccharide chains in the entry. The first graphic for a chain summarises the proportions of the various outlier classes displayed in the second graphic. The second graphic shows the sequence view annotated by issues in geometry and electron density. Residues are color-coded according to the number of geometric quality criteria for which they contain at least one outlier: green = 0, yellow = 1, orange = 2 and red = 3 or more. A red dot above a residue indicates a poor fit to the electron density ($RSRZ > 2$). Stretches of 2 or more consecutive residues without any outlier are shown as a green connector. Residues present in the sample, but not in the model, are shown in grey.

- Molecule 1: CTP synthase



- Molecule 1: CTP synthase



4 Data and refinement statistics

Property	Value	Source
Space group	P 21 21 2	Depositor
Cell constants a, b, c, α , β , γ	158.29Å 108.07Å 128.48Å 90.00° 90.00° 90.00°	Depositor
Resolution (Å)	48.81 – 2.40 48.81 – 2.40	Depositor EDS
% Data completeness (in resolution range)	99.8 (48.81-2.40) 99.9 (48.81-2.40)	Depositor EDS
R_{merge}	0.13	Depositor
R_{sym}	(Not available)	Depositor
$\langle I/\sigma(I) \rangle$ ¹	2.58 (at 2.39Å)	Xtrriage
Refinement program	REFMAC 5.8.0267	Depositor
R, R_{free}	0.205 , 0.229 (Not available) , (Not available)	Depositor DCC
R_{free} test set	4335 reflections (5.01%)	wwPDB-VP
Wilson B-factor (Å ²)	48.6	Xtrriage
Anisotropy	0.027	Xtrriage
Bulk solvent k_{sol} (e/Å ³), B_{sol} (Å ²)	0.37 , 37.4	EDS
L-test for twinning ²	$\langle L \rangle = 0.48$, $\langle L^2 \rangle = 0.31$	Xtrriage
Estimated twinning fraction	No twinning to report.	Xtrriage
F_o, F_c correlation	0.95	EDS
Total number of atoms	8684	wwPDB-VP
Average B, all atoms (Å ²)	56.0	wwPDB-VP

Xtrriage's analysis on translational NCS is as follows: *The largest off-origin peak in the Patterson function is 5.38% of the height of the origin peak. No significant pseudotranslation is detected.*

¹Intensities estimated from amplitudes.

²Theoretical values of $\langle |L| \rangle$, $\langle L^2 \rangle$ for acentric reflections are 0.5, 0.333 respectively for untwinned datasets, and 0.375, 0.2 for perfectly twinned datasets.

5 Model quality

5.1 Standard geometry

Bond lengths and bond angles in the following residue types are not validated in this section: NA, MLA, 1TK

The Z score for a bond length (or angle) is the number of standard deviations the observed value is removed from the expected value. A bond length (or angle) with $|Z| > 5$ is considered an outlier worth inspection. RMSZ is the root-mean-square of all Z scores of the bond lengths (or angles).

Mol	Chain	Bond lengths		Bond angles	
		RMSZ	# Z >5	RMSZ	# Z >5
1	AAA	0.63	0/4314	0.71	0/5844
1	BBB	0.63	0/4269	0.72	0/5783
All	All	0.63	0/8583	0.72	0/11627

There are no bond length outliers.

There are no bond angle outliers.

There are no chirality outliers.

There are no planarity outliers.

5.2 Too-close contacts

In the following table, the Non-H and H(model) columns list the number of non-hydrogen atoms and hydrogen atoms in the chain respectively. The H(added) column lists the number of hydrogen atoms added and optimized by MolProbity. The Clashes column lists the number of clashes within the asymmetric unit, whereas Symm-Clashes lists symmetry-related clashes.

Mol	Chain	Non-H	H(model)	H(added)	Clashes	Symm-Clashes
1	AAA	4221	0	4249	17	0
1	BBB	4183	0	4207	16	0
2	AAA	7	0	2	0	0
3	AAA	29	0	0	1	0
3	BBB	29	0	0	1	0
4	AAA	1	0	0	0	0
4	BBB	1	0	0	0	0
5	AAA	116	0	0	0	0
5	BBB	97	0	0	1	0
All	All	8684	0	8458	35	0

The all-atom clashscore is defined as the number of clashes found per 1000 atoms (including

hydrogen atoms). The all-atom clashscore for this structure is 2.

All (35) close contacts within the same asymmetric unit are listed below, sorted by their clash magnitude.

Atom-1	Atom-2	Interatomic distance (Å)	Clash overlap (Å)
3:BBB:701:1TK:O4'	3:BBB:701:1TK:C1'	1.66	1.18
3:AAA:602:1TK:O4'	3:AAA:602:1TK:C1'	1.65	1.16
1:BBB:382:MET:HA	1:BBB:511:ALA:HB1	1.72	0.70
1:BBB:154:LEU:HD13	1:BBB:201:ILE:CD1	2.25	0.67
1:AAA:382:MET:HA	1:AAA:511:ALA:HB1	1.85	0.58
1:AAA:186:VAL:HG12	1:AAA:220:GLU:HG2	1.85	0.58
1:BBB:454:VAL:HG21	1:BBB:500:ILE:HG21	1.85	0.57
1:BBB:355:TYR:CD1	1:BBB:404:PHE:HB3	2.40	0.57
1:BBB:455:ARG:HG2	1:BBB:455:ARG:HH21	1.73	0.54
1:BBB:285:ASN:ND2	5:BBB:804:HOH:O	2.40	0.54
1:BBB:450:ASP:HA	1:BBB:455:ARG:HD3	1.91	0.52
1:BBB:455:ARG:HH21	1:BBB:455:ARG:CG	2.22	0.51
1:AAA:177:VAL:HG12	1:AAA:186:VAL:HG22	1.92	0.51
1:AAA:11:GLY:HA3	1:AAA:194:SER:OG	2.12	0.49
1:BBB:458:TYR:CD1	1:BBB:463:ILE:HG21	2.48	0.49
1:AAA:45:ILE:O	1:AAA:93:GLY:HA3	2.13	0.48
1:BBB:154:LEU:HB3	1:BBB:201:ILE:HD12	1.96	0.48
1:AAA:32:ARG:NH2	1:AAA:258:ASP:OD1	2.46	0.48
1:AAA:86:ARG:O	1:AAA:86:ARG:HD3	2.13	0.47
1:AAA:355:TYR:CD1	1:AAA:404:PHE:HB3	2.48	0.47
1:AAA:241:VAL:HG11	1:AAA:250:LEU:CD1	2.45	0.47
1:BBB:189:LYS:HB3	1:BBB:190:PRO:HD3	1.98	0.45
1:BBB:177:VAL:HG12	1:BBB:186:VAL:HB	1.99	0.44
1:AAA:401:SER:HA	1:AAA:413:VAL:O	2.18	0.43
1:AAA:443:ALA:HB1	1:AAA:464:VAL:CG1	2.48	0.43
1:AAA:28:ILE:HD11	1:AAA:251:LEU:HB2	2.00	0.43
1:BBB:401:SER:HA	1:BBB:413:VAL:O	2.19	0.43
1:BBB:374:PRO:HA	1:BBB:508:TRP:O	2.20	0.42
1:AAA:124:LYS:HG2	1:AAA:160:MET:HG3	2.02	0.41
1:AAA:377:GLY:O	1:AAA:511:ALA:HA	2.20	0.41
1:AAA:55[B]:ILE:HG23	1:AAA:298:TYR:HB3	2.01	0.41
1:BBB:247:ILE:N	1:BBB:248:PRO:CD	2.83	0.41
1:AAA:172:MET:SD	1:AAA:209:ILE:HD11	2.61	0.41
1:BBB:449:VAL:HG21	1:BBB:488:VAL:O	2.20	0.41
1:AAA:374:PRO:HA	1:AAA:508:TRP:O	2.21	0.40

There are no symmetry-related clashes.

5.3 Torsion angles [i](#)

5.3.1 Protein backbone [i](#)

In the following table, the Percentiles column shows the percent Ramachandran outliers of the chain as a percentile score with respect to all X-ray entries followed by that with respect to entries of similar resolution.

The Analysed column shows the number of residues for which the backbone conformation was analysed, and the total number of residues.

Mol	Chain	Analysed	Favoured	Allowed	Outliers	Percentiles	
1	AAA	539/545 (99%)	526 (98%)	12 (2%)	1 (0%)	47	62
1	BBB	533/545 (98%)	523 (98%)	9 (2%)	1 (0%)	47	62
All	All	1072/1090 (98%)	1049 (98%)	21 (2%)	2 (0%)	47	62

All (2) Ramachandran outliers are listed below:

Mol	Chain	Res	Type
1	BBB	379	CYS
1	AAA	379	CYS

5.3.2 Protein sidechains [i](#)

In the following table, the Percentiles column shows the percent sidechain outliers of the chain as a percentile score with respect to all X-ray entries followed by that with respect to entries of similar resolution.

The Analysed column shows the number of residues for which the sidechain conformation was analysed, and the total number of residues.

Mol	Chain	Analysed	Rotameric	Outliers	Percentiles	
1	AAA	461/461 (100%)	460 (100%)	1 (0%)	93	97
1	BBB	456/461 (99%)	453 (99%)	3 (1%)	84	92
All	All	917/922 (100%)	913 (100%)	4 (0%)	91	96

All (4) residues with a non-rotameric sidechain are listed below:

Mol	Chain	Res	Type
1	AAA	186	VAL
1	BBB	388	ASP
1	BBB	450	ASP
1	BBB	455	ARG

Sometimes sidechains can be flipped to improve hydrogen bonding and reduce clashes. There are no such sidechains identified.

5.3.3 RNA [i](#)

There are no RNA molecules in this entry.

5.4 Non-standard residues in protein, DNA, RNA chains [i](#)

There are no non-standard protein/DNA/RNA residues in this entry.

5.5 Carbohydrates [i](#)

There are no monosaccharides in this entry.

5.6 Ligand geometry [i](#)

Of 5 ligands modelled in this entry, 2 are monoatomic - leaving 3 for Mogul analysis.

In the following table, the Counts columns list the number of bonds (or angles) for which Mogul statistics could be retrieved, the number of bonds (or angles) that are observed in the model and the number of bonds (or angles) that are defined in the Chemical Component Dictionary. The Link column lists molecule types, if any, to which the group is linked. The Z score for a bond length (or angle) is the number of standard deviations the observed value is removed from the expected value. A bond length (or angle) with $|Z| > 2$ is considered an outlier worth inspection. RMSZ is the root-mean-square of all Z scores of the bond lengths (or angles).

Mol	Type	Chain	Res	Link	Bond lengths			Bond angles		
					Counts	RMSZ	# Z > 2	Counts	RMSZ	# Z > 2
3	1TK	BBB	701	4	26,30,30	4.39	13 (50%)	39,47,47	1.28	4 (10%)
2	MLA	AAA	601	-	6,6,6	1.37	0	7,7,7	0.99	0
3	1TK	AAA	602	4	26,30,30	4.32	13 (50%)	39,47,47	1.33	6 (15%)

In the following table, the Chirals column lists the number of chiral outliers, the number of chiral centers analysed, the number of these observed in the model and the number defined in the Chemical Component Dictionary. Similar counts are reported in the Torsion and Rings columns. '-' means no outliers of that kind were identified.

Mol	Type	Chain	Res	Link	Chirals	Torsions	Rings
3	1TK	BBB	701	4	-	7/22/38/38	0/2/2/2
2	MLA	AAA	601	-	-	0/4/4/4	-
3	1TK	AAA	602	4	-	5/22/38/38	0/2/2/2

All (26) bond length outliers are listed below:

Mol	Chain	Res	Type	Atoms	Z	Observed(Å)	Ideal(Å)
3	BBB	701	1TK	C2'-C1'	-14.61	1.34	1.53
3	AAA	602	1TK	C2'-C1'	-14.51	1.34	1.53
3	BBB	701	1TK	O4'-C1'	10.15	1.66	1.42
3	AAA	602	1TK	O4'-C1'	9.87	1.65	1.42
3	BBB	701	1TK	O4'-C4'	-6.92	1.29	1.45
3	BBB	701	1TK	C4-N4	6.87	1.50	1.33
3	AAA	602	1TK	O4'-C4'	-6.82	1.29	1.45
3	AAA	602	1TK	C4-N4	6.78	1.49	1.33
3	BBB	701	1TK	O3'-C3'	-3.44	1.34	1.43
3	AAA	602	1TK	O3'-C3'	-3.36	1.35	1.43
3	BBB	701	1TK	O2-C2	-3.27	1.17	1.23
3	AAA	602	1TK	O2-C2	-3.10	1.18	1.23
3	BBB	701	1TK	C2-N1	-3.02	1.33	1.40
3	AAA	602	1TK	C2-N1	-2.94	1.33	1.40
3	AAA	602	1TK	C5-C4	-2.79	1.36	1.42
3	BBB	701	1TK	C5-C4	-2.68	1.36	1.42
3	BBB	701	1TK	C3'-C4'	2.68	1.59	1.53
3	BBB	701	1TK	C6-C5	2.63	1.41	1.35
3	AAA	602	1TK	C6-C5	2.53	1.40	1.35
3	AAA	602	1TK	C3'-C4'	2.52	1.59	1.53
3	BBB	701	1TK	C2-N3	-2.45	1.31	1.36
3	BBB	701	1TK	C2'-C3'	2.45	1.56	1.52
3	AAA	602	1TK	C2'-C3'	2.42	1.56	1.52
3	AAA	602	1TK	C2-N3	-2.12	1.32	1.36
3	BBB	701	1TK	F1-C2'	2.11	1.44	1.40
3	AAA	602	1TK	F1-C2'	2.02	1.44	1.40

All (10) bond angle outliers are listed below:

Mol	Chain	Res	Type	Atoms	Z	Observed(°)	Ideal(°)
3	BBB	701	1TK	C4'-O4'-C1'	-3.32	102.14	109.47
3	AAA	602	1TK	PB-O3B-PG	-3.20	121.83	132.83
3	BBB	701	1TK	PB-O3B-PG	-3.14	122.05	132.83
3	BBB	701	1TK	O2-C2-N3	-3.05	117.37	122.33
3	AAA	602	1TK	C4'-O4'-C1'	-2.91	103.05	109.47
3	AAA	602	1TK	O2-C2-N3	-2.82	117.74	122.33
3	AAA	602	1TK	C2'-C1'-N1	2.44	117.93	114.20
3	BBB	701	1TK	O4'-C1'-C2'	-2.42	103.30	105.79
3	AAA	602	1TK	O4'-C1'-C2'	-2.11	103.62	105.79
3	AAA	602	1TK	F1-C2'-C1'	2.08	113.41	109.08

There are no chirality outliers.

All (12) torsion outliers are listed below:

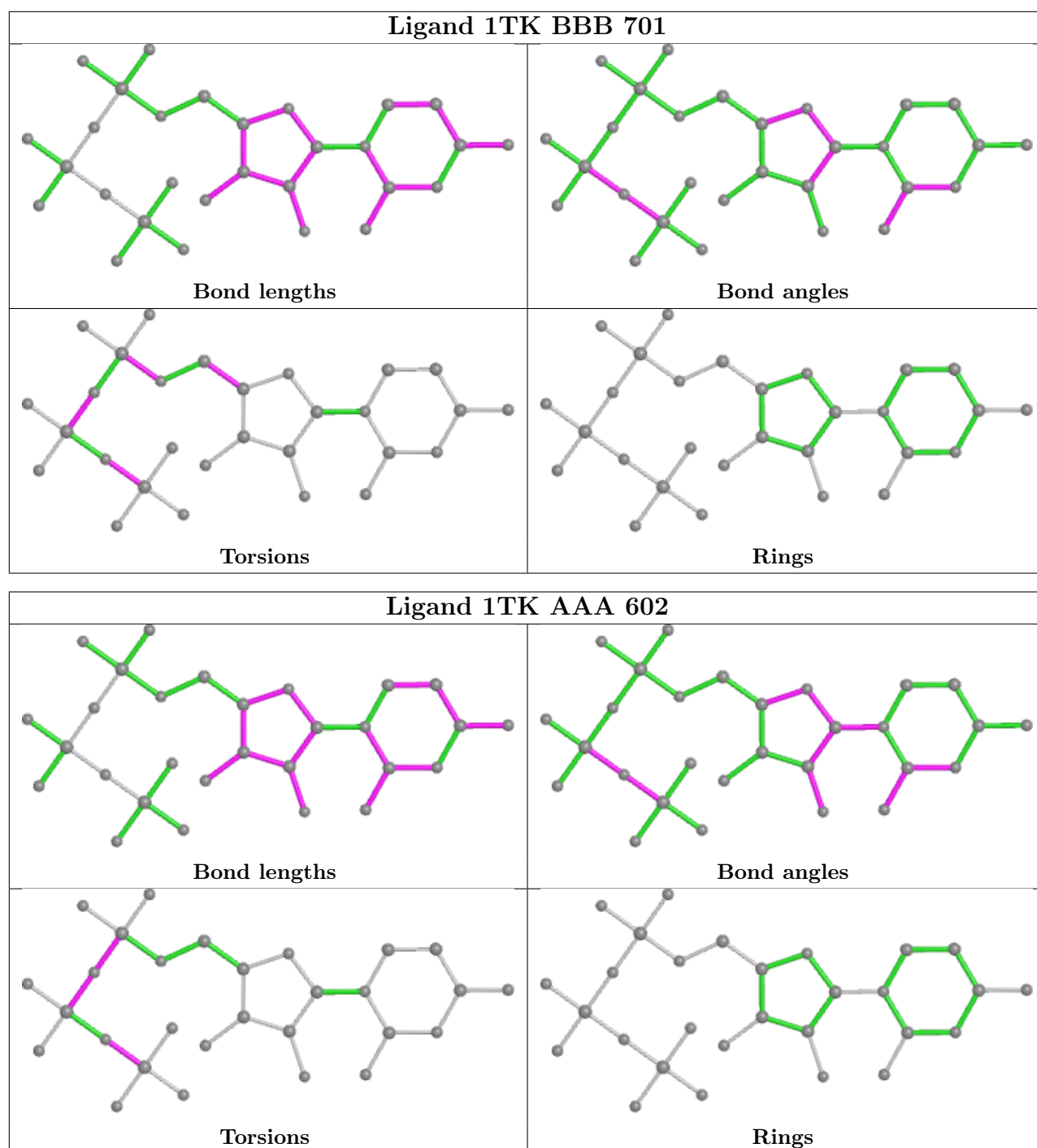
Mol	Chain	Res	Type	Atoms
3	AAA	602	1TK	PB-O3B-PG-O3G
3	BBB	701	1TK	C3'-C4'-C5'-O5'
3	BBB	701	1TK	PB-O3B-PG-O1G
3	AAA	602	1TK	PB-O3A-PA-O1A
3	AAA	602	1TK	PA-O3A-PB-O1B
3	BBB	701	1TK	PA-O3A-PB-O2B
3	AAA	602	1TK	PB-O3B-PG-O1G
3	BBB	701	1TK	O4'-C4'-C5'-O5'
3	AAA	602	1TK	PB-O3B-PG-O2G
3	BBB	701	1TK	PB-O3B-PG-O2G
3	BBB	701	1TK	PB-O3B-PG-O3G
3	BBB	701	1TK	C5'-O5'-PA-O1A

There are no ring outliers.

2 monomers are involved in 2 short contacts:

Mol	Chain	Res	Type	Clashes	Symm-Clashes
3	BBB	701	1TK	1	0
3	AAA	602	1TK	1	0

The following is a two-dimensional graphical depiction of Mogul quality analysis of bond lengths, bond angles, torsion angles, and ring geometry for all instances of the Ligand of Interest. In addition, ligands with molecular weight > 250 and outliers as shown on the validation Tables will also be included. For torsion angles, if less than 5% of the Mogul distribution of torsion angles is within 10 degrees of the torsion angle in question, then that torsion angle is considered an outlier. Any bond that is central to one or more torsion angles identified as an outlier by Mogul will be highlighted in the graph. For rings, the root-mean-square deviation (RMSD) between the ring in question and similar rings identified by Mogul is calculated over all ring torsion angles. If the average RMSD is greater than 60 degrees and the minimal RMSD between the ring in question and any Mogul-identified rings is also greater than 60 degrees, then that ring is considered an outlier. The outliers are highlighted in purple. The color gray indicates Mogul did not find sufficient equivalents in the CSD to analyse the geometry.



5.7 Other polymers [i](#)

There are no such residues in this entry.

5.8 Polymer linkage issues [i](#)

There are no chain breaks in this entry.

6 Fit of model and data

6.1 Protein, DNA and RNA chains

In the following table, the column labelled ‘#RSRZ > 2’ contains the number (and percentage) of RSRZ outliers, followed by percent RSRZ outliers for the chain as percentile scores relative to all X-ray entries and entries of similar resolution. The OWAB column contains the minimum, median, 95th percentile and maximum values of the occupancy-weighted average B-factor per residue. The column labelled ‘Q < 0.9’ lists the number of (and percentage) of residues with an average occupancy less than 0.9.

Mol	Chain	Analysed	<RSRZ>	#RSRZ>2	OWAB(Å ²)	Q<0.9
1	AAA	534/545 (97%)	0.28	20 (3%) 41 41	31, 53, 84, 102	0
1	BBB	534/545 (97%)	0.42	35 (6%) 18 17	31, 55, 87, 106	0
All	All	1068/1090 (97%)	0.35	55 (5%) 28 26	31, 54, 86, 106	0

All (55) RSRZ outliers are listed below:

Mol	Chain	Res	Type	RSRZ
1	BBB	494	ASP	6.6
1	AAA	494	ASP	6.2
1	BBB	342	LYS	5.1
1	BBB	1	MET	5.1
1	BBB	495	ASP	5.0
1	AAA	339	GLU	4.6
1	BBB	339	GLU	4.5
1	AAA	397	GLU	4.2
1	BBB	487	ARG	4.0
1	AAA	495	ASP	3.8
1	BBB	505	ASN	3.5
1	AAA	267	ASN	3.4
1	BBB	483	ASP	3.4
1	BBB	334	GLU	3.4
1	AAA	340	ILE	3.3
1	BBB	395	ASN	3.2
1	BBB	405	VAL	3.1
1	AAA	342	LYS	3.1
1	AAA	1	MET	3.0
1	AAA	423	ASN	3.0
1	BBB	340	ILE	2.8
1	AAA	428	VAL	2.8
1	AAA	335	THR	2.7
1	BBB	496	GLN	2.7

Continued on next page...

Continued from previous page...

Mol	Chain	Res	Type	RSRZ
1	AAA	407	ASP	2.7
1	BBB	428	VAL	2.6
1	BBB	336	ARG	2.6
1	BBB	446	CYS	2.6
1	BBB	267	ASN	2.6
1	BBB	451	ASP	2.5
1	BBB	57	HIS	2.4
1	AAA	240	ASP	2.4
1	BBB	397	GLU	2.4
1	BBB	407	ASP	2.4
1	AAA	409	LYS	2.4
1	BBB	493	GLY	2.4
1	BBB	445	GLN	2.4
1	BBB	485	GLY	2.4
1	AAA	336	ARG	2.3
1	BBB	2	THR	2.2
1	AAA	289	GLU	2.2
1	AAA	408	CYS	2.2
1	BBB	200	SER	2.2
1	AAA	150[A]	SER	2.2
1	BBB	476	MET	2.2
1	BBB	145	VAL	2.2
1	BBB	543	GLN	2.2
1	AAA	329	ASP	2.1
1	AAA	487	ARG	2.1
1	BBB	479	LYS	2.1
1	BBB	450	ASP	2.1
1	BBB	195	VAL	2.1
1	BBB	335	THR	2.0
1	BBB	240	ASP	2.0
1	BBB	449	VAL	2.0

6.2 Non-standard residues in protein, DNA, RNA chains [i](#)

There are no non-standard protein/DNA/RNA residues in this entry.

6.3 Carbohydrates [i](#)

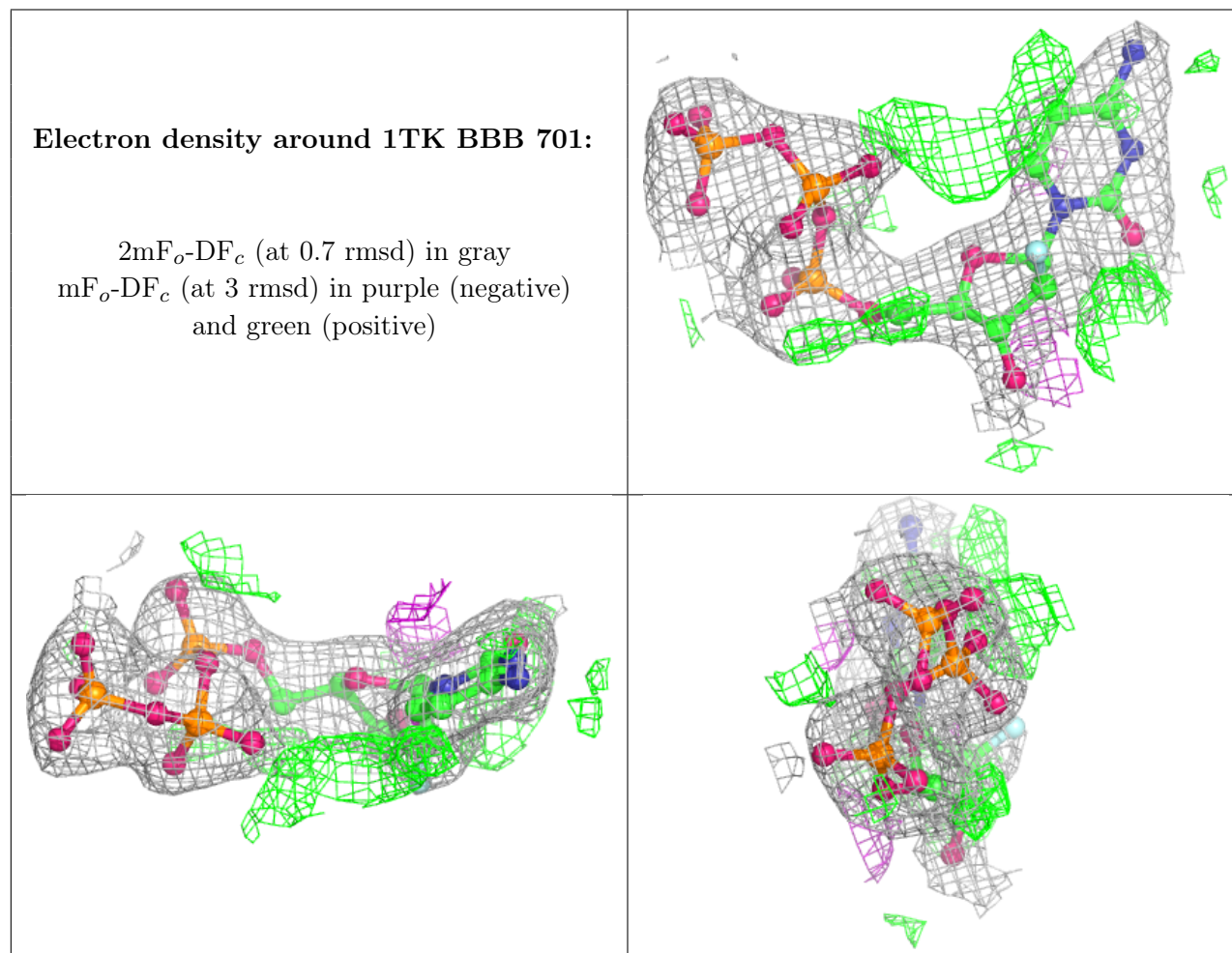
There are no monosaccharides in this entry.

6.4 Ligands [i](#)

In the following table, the Atoms column lists the number of modelled atoms in the group and the number defined in the chemical component dictionary. The B-factors column lists the minimum, median, 95th percentile and maximum values of B factors of atoms in the group. The column labelled 'Q< 0.9' lists the number of atoms with occupancy less than 0.9.

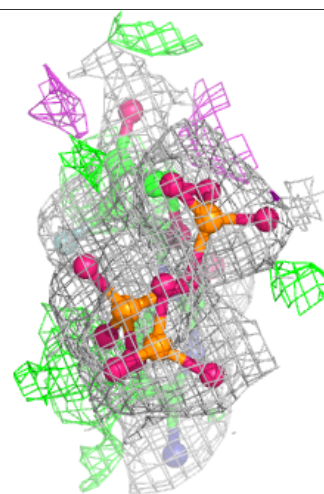
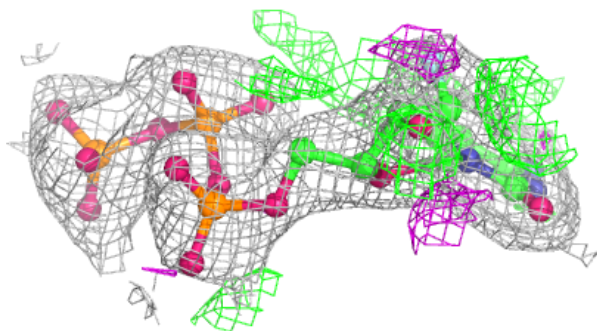
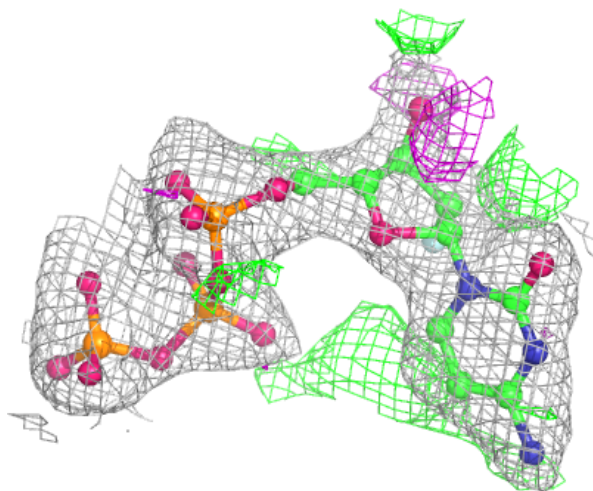
Mol	Type	Chain	Res	Atoms	RSCC	RSR	B-factors(Å ²)	Q<0.9
2	MLA	AAA	601	7/7	0.28	0.61	102,112,116,117	0
4	NA	BBB	702	1/1	0.77	0.15	77,77,77,77	0
4	NA	AAA	603	1/1	0.92	0.12	73,73,73,73	0
3	1TK	BBB	701	29/29	0.93	0.22	38,45,52,53	29
3	1TK	AAA	602	29/29	0.94	0.20	33,43,48,49	29

The following is a graphical depiction of the model fit to experimental electron density of all instances of the Ligand of Interest. In addition, ligands with molecular weight > 250 and outliers as shown on the geometry validation Tables will also be included. Each fit is shown from different orientation to approximate a three-dimensional view.



Electron density around 1TK AAA 602:

$2mF_o-DF_c$ (at 0.7 rmsd) in gray
 mF_o-DF_c (at 3 rmsd) in purple (negative)
and green (positive)



6.5 Other polymers [i](#)

There are no such residues in this entry.