



# wwPDB EM Validation Summary Report ⓘ

Apr 20, 2024 – 10:33 PM EDT

PDB ID : 8FQ8  
EMDB ID : EMD-29380  
Title : LBD conformation 1 (LBDconf1) of GluA2 flip Q isoform of AMPA receptor in complex with gain-of-function TARP gamma2, with 140mM NMDG, 330uM CTZ, and 100mM L-glutamate (Open-Na110)  
Authors : Nakagawa, T.  
Deposited on : 2023-01-05  
Resolution : 3.11 Å(reported)

This is a wwPDB EM Validation Summary Report for a publicly released PDB entry.

We welcome your comments at [validation@mail.wwpdb.org](mailto:validation@mail.wwpdb.org)

A user guide is available at

<https://www.wwpdb.org/validation/2017/EMValidationReportHelp>

with specific help available everywhere you see the ⓘ symbol.

The types of validation reports are described at

<http://www.wwpdb.org/validation/2017/FAQs#types>.

---

The following versions of software and data (see [references ⓘ](#)) were used in the production of this report:

EMDB validation analysis : 0.0.1.dev92  
Mogul : 1.8.5 (274361), CSD as541be (2020)  
MolProbity : 4.02b-467  
buster-report : 1.1.7 (2018)  
Percentile statistics : 20191225.v01 (using entries in the PDB archive December 25th 2019)  
MapQ : 1.9.13  
Ideal geometry (proteins) : Engh & Huber (2001)  
Ideal geometry (DNA, RNA) : Parkinson et al. (1996)  
Validation Pipeline (wwPDB-VP) : 2.36.2

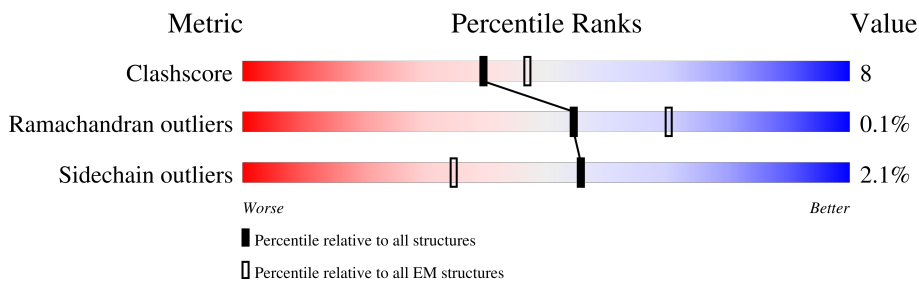
# 1 Overall quality at a glance

The following experimental techniques were used to determine the structure:

*ELECTRON MICROSCOPY*

The reported resolution of this entry is 3.11 Å.

Percentile scores (ranging between 0-100) for global validation metrics of the entry are shown in the following graphic. The table shows the number of entries on which the scores are based.



Metric	Whole archive (#Entries)	EM structures (#Entries)
Clashscore	158937	4297
Ramachandran outliers	154571	4023
Sidechain outliers	154315	3826

The table below summarises the geometric issues observed across the polymeric chains and their fit to the map. The red, orange, yellow and green segments of the bar indicate the fraction of residues that contain outliers for  $\geq 3$ , 2, 1 and 0 types of geometric quality criteria respectively. A grey segment represents the fraction of residues that are not modelled. The numeric value for each fraction is indicated below the corresponding segment, with a dot representing fractions  $\leq 5\%$ . The upper red bar (where present) indicates the fraction of residues that have poor fit to the EM map (all-atom inclusion  $< 40\%$ ). The numeric value is given above the bar.

Mol	Chain	Length	Quality of chain
1	A	889	 24% 5% 71%
1	B	889	 25% 5% 70%
1	C	889	 23% 6% 71%
1	D	889	 26% 70%

## 2 Entry composition [i](#)

There are 4 unique types of molecules in this entry. The entry contains 8392 atoms, of which 0 are hydrogens and 0 are deuteriums.

In the tables below, the AltConf column contains the number of residues with at least one atom in alternate conformation and the Trace column contains the number of residues modelled with at most 2 atoms.

- Molecule 1 is a protein called Glutamate receptor 2.

Mol	Chain	Residues	Atoms					AltConf	Trace
			Total	C	N	O	S		
1	A	260	2012	1282	333	384	13	0	0
1	B	270	2111	1346	351	399	15	0	0
1	C	260	2012	1282	333	384	13	0	0
1	D	270	2111	1346	351	399	15	0	0

There are 28 discrepancies between the modelled and reference sequences:

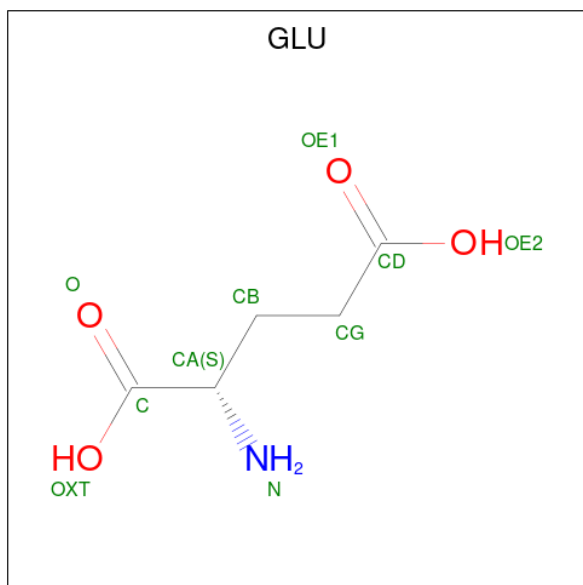
Chain	Residue	Modelled	Actual	Comment	Reference
A	848	ASP	-	insertion	UNP P19491
A	849	TYR	-	insertion	UNP P19491
A	850	LYS	-	insertion	UNP P19491
A	851	ASP	-	insertion	UNP P19491
A	852	ASP	-	insertion	UNP P19491
A	853	ASP	-	insertion	UNP P19491
A	854	ASP	TYR	conflict	UNP P19491
B	848	ASP	-	insertion	UNP P19491
B	849	TYR	-	insertion	UNP P19491
B	850	LYS	-	insertion	UNP P19491
B	851	ASP	-	insertion	UNP P19491
B	852	ASP	-	insertion	UNP P19491
B	853	ASP	-	insertion	UNP P19491
B	854	ASP	TYR	conflict	UNP P19491
C	848	ASP	-	insertion	UNP P19491
C	849	TYR	-	insertion	UNP P19491
C	850	LYS	-	insertion	UNP P19491
C	851	ASP	-	insertion	UNP P19491
C	852	ASP	-	insertion	UNP P19491
C	853	ASP	-	insertion	UNP P19491
C	854	ASP	TYR	conflict	UNP P19491
D	848	ASP	-	insertion	UNP P19491

*Continued on next page...*

Continued from previous page...

Chain	Residue	Modelled	Actual	Comment	Reference
D	849	TYR	-	insertion	UNP P19491
D	850	LYS	-	insertion	UNP P19491
D	851	ASP	-	insertion	UNP P19491
D	852	ASP	-	insertion	UNP P19491
D	853	ASP	-	insertion	UNP P19491
D	854	ASP	TYR	conflict	UNP P19491

- Molecule 2 is GLUTAMIC ACID (three-letter code: GLU) (formula:  $C_5H_9NO_4$ ) (labeled as "Ligand of Interest" by depositor).



Mol	Chain	Residues	Atoms				AltConf
			Total	C	N	O	
2	A	1	10	5	1	4	0
2	B	1	10	5	1	4	0
2	C	1	10	5	1	4	0
2	D	1	10	5	1	4	0

- Molecule 3 is CYCLOTHIAZIDE (three-letter code: CYZ) (formula:  $C_{14}H_{16}ClN_3O_4S_2$ ) (labeled as "Ligand of Interest" by depositor).



Mol	Chain	Residues	Atoms					AltConf	
			Total	C	Cl	N	O		S
3	A	1	24	14	1	3	4	2	0
3	B	1	24	14	1	3	4	2	0
3	C	1	24	14	1	3	4	2	0
3	D	1	24	14	1	3	4	2	0

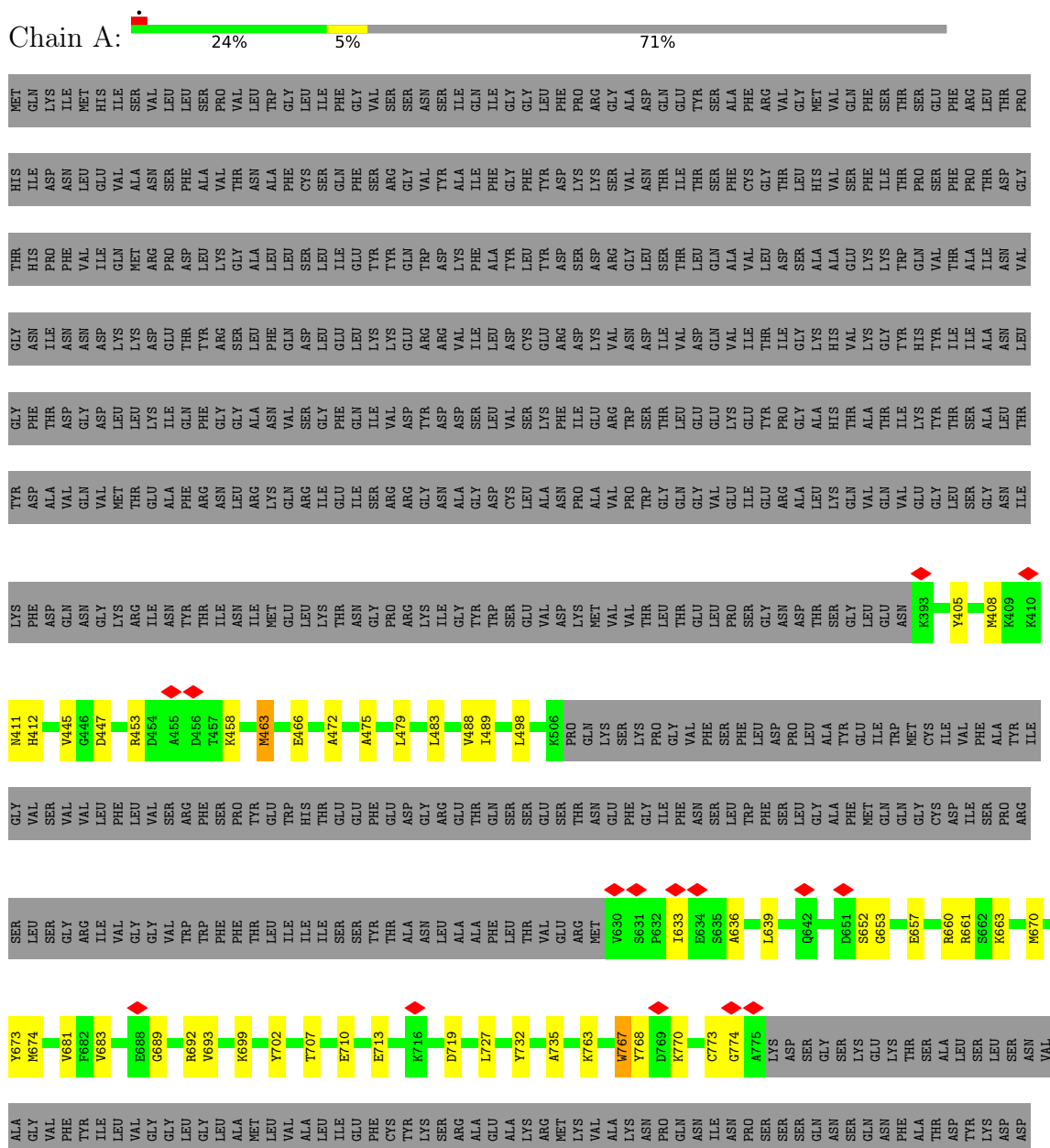
- Molecule 4 is water.

Mol	Chain	Residues	Atoms		AltConf
4	A	2	Total	O	0
			2	2	
4	B	3	Total	O	0
			3	3	
4	C	2	Total	O	0
			2	2	
4	D	3	Total	O	0
			3	3	

### 3 Residue-property plots

These plots are drawn for all protein, RNA, DNA and oligosaccharide chains in the entry. The first graphic for a chain summarises the proportions of the various outlier classes displayed in the second graphic. The second graphic shows the sequence view annotated by issues in geometry and atom inclusion in map density. Residues are color-coded according to the number of geometric quality criteria for which they contain at least one outlier: green = 0, yellow = 1, orange = 2 and red = 3 or more. A red diamond above a residue indicates a poor fit to the EM map for this residue (all-atom inclusion < 40%). Stretches of 2 or more consecutive residues without any outlier are shown as a green connector. Residues present in the sample, but not in the model, are shown in grey.

#### • Molecule 1: Glutamate receptor 2



ASP  
GLY  
LYS  
GLU  
TYR  
VAL  
ASN  
TYR  
GLY  
ILE  
GLU  
SER  
VAL  
LYS  
ILE

● Molecule 1: Glutamate receptor 2

Chain B:



MET  
GLN  
LYS  
ILE  
MET  
HIS  
SER  
VAL  
SER  
LEU  
LEU  
SER  
PRO  
VAL  
LEU  
TRP  
GLY  
LEU  
LEU  
PHE  
GLY  
SER  
VAL  
SER  
ARG  
SER  
GLY  
SER  
SER  
ASN  
SER  
ILE

HIS  
ILE  
ASP  
ASN  
LEU  
GLU  
VAL  
ALA  
SER  
ASN  
PHE  
SER  
LEU  
ALA  
THR  
VAL  
CYS  
PHE  
SER  
GLN  
SER  
PHE  
TYR  
GLY  
ALA  
LEU  
TYR  
ILE

THR  
HIS  
PRO  
PHE  
VAL  
ILE  
GLN  
MET  
ARG  
ASP  
LEU  
LYS  
GLY  
ALA  
THR  
SER  
PHE  
PHE  
PHE  
TYR  
LEU  
THR  
ALA  
ASN  
VAL

GLY  
ASN  
ILE  
ASP  
ASN  
ASP  
ASP  
LYS  
LYS  
ASP  
THR  
THR  
ARG  
GLY  
SER  
PHE  
LEU  
LEU  
LEU  
GLY  
GLY  
VAL  
ASP  
ARG  
VAL  
SER  
ILE

GLY  
PHE  
THR  
ASP  
GLY  
ASP  
ASP  
LEU  
LEU  
LYS  
ILE  
PHE  
PHE  
GLY  
ALA  
ASN  
VAL  
SER  
SER  
SER  
THR  
THR  
THR  
THR  
SER  
THR

TYR  
ASP  
ALA  
VAL  
GLN  
VAL  
MET  
THR  
GLU  
ALA  
PHE  
ARG  
ASN  
LEU  
ARG  
LYS  
GLN  
ILE  
GLY  
ILE  
SER  
ARG  
GLY  
ASN  
ALA  
GLY  
SER  
TRP  
CYS  
VAL  
SER  
LEU  
ALA  
ASN  
PRO  
ALA  
GLY  
VAL  
VAL  
PRO  
TRP  
GLY  
GLN  
GLY  
ILE  
GLY  
GLY  
THR  
VAL  
ASN  
ILE

LYS  
PHE  
ASP  
GLN  
ASN  
GLY  
LYS  
ARG  
LYS  
THR  
ILE  
ASN  
ASN  
ILE  
MET  
LEU  
GLU  
LEU  
LYS  
THR  
ASN  
GLY  
TRP  
ASP  
VAL  
MET  
THR  
LEU  
LEU  
THR  
GLY  
ASN  
LEU  
ASN  
LEU  
GLY  
VAL  
GLY  
SER  
THR  
VAL  
GLY  
PHE  
ASP  
VAL  
PHE  
ASP  
ASN  
M411

M414  
L415  
E416  
G417  
R420  
Y421  
E422  
V426  
G437  
F438  
K439  
Y440  
K441  
V445  
G448  
A455  
D456  
T457  
K458  
L459  
L467  
D473  
A477  
P478  
L479  
I489  
M496  
S497  
L498  
S501  
T502  
M503  
K506  
P507  
S510  
K511  
P512  
K393  
T394  
P404  
Y405  
M411

LEU  
ALA  
TYR  
GLU  
ILE  
TRP  
MET  
CYS  
ILE  
VAL  
ASP  
PHE  
ALA  
TYR  
ILE  
GLY  
VAL  
SER  
SER  
VAL  
VAL  
LEU  
PHE  
LEU  
GLY  
VAL  
SER  
ARG  
PHE  
SER  
PRO  
THR  
THR  
THR  
ILE  
ILE  
THR  
GLU  
GLY  
PHE  
GLY  
ASP  
GLY  
GLY  
THR  
THR  
GLN  
SER  
SER  
GLU  
SER  
THR  
ASN  
GLY  
PHE  
GLY  
GLY  
PHE  
ASN  
SER  
LEU  
TRP  
PHE  
SER  
SER

LEU  
GLY  
ALA  
PHE  
MET  
GLN  
GLY  
CYS  
ASP  
ILE  
PHE  
PRO  
ARG  
SER  
SER  
SER  
GLY  
ARG  
ILE  
VAL  
GLY  
GLY  
VAL  
TRP  
PHE  
THR  
THR  
ILE  
ILE  
SER  
SER  
TYR  
SER  
THR  
ALA  
ASN  
LEU  
ALA  
PHE  
L624  
T625  
V626  
E627  
R628  
S635  
D638  
Y647  
G648  
T649  
L650  
D651  
S652

E657  
R661  
Y673  
M674  
R675  
E678  
R692  
K695  
S696  
K697  
Y702  
Y711  
R715  
D719  
K722  
D728  
S729  
K730  
G731  
Y732  
A735  
L751  
K763  
Y764  
K765  
W766  
W767  
Y768  
D769  
K770  
C773

SER  
LEU  
SER  
ASN  
VAL  
ALA  
GLY  
PHE  
TYR  
TYR  
ILE  
LEU  
LEU  
VAL  
VAL  
GLY  
GLY  
LEU  
LEU  
LEU  
ALA  
MET  
LEU  
VAL  
VAL  
SER  
SER  
ILE  
GLY  
CYS  
TYR  
LYS  
SER  
SER  
ARG  
GLU  
GLU  
ALA  
ALA  
LYS  
ARG  
MET  
LYS  
VAL  
TYR  
LYS  
ASN  
PRO  
GLN  
ASN  
ILE  
ASN  
PRO  
SER  
SER  
SER  
GLN  
SER  
GLY  
SER  
SER  
SER  
GLN  
ASN  
PHE  
ARG  
LEU  
THR

ASP  
TYR  
LYS  
ASP  
ASP  
ASP  
LYS  
VAL  
PHE  
GLY  
TYR  
TYR  
ASN  
VAL  
ASN  
TYR  
GLY  
ILE  
LEU  
SER  
SER  
VAL  
VAL  
LEU  
LEU  
GLY  
GLY  
VAL  
LEU  
SER  
LEU  
PHE  
GLY  
SER

● Molecule 1: Glutamate receptor 2

Chain C:



MET  
GLN  
ILE  
MET  
HIS  
SER  
VAL  
SER  
LEU  
LEU  
SER  
PRO  
VAL  
LEU  
TRP  
GLY  
LEU  
LEU  
ILE  
PHE  
GLY  
SER  
VAL  
SER  
SER  
ASN  
SER

ASP  
TYR  
LYS  
ASP  
ASP  
LYS  
VAL  
PHE  
GLY  
TYR  
TYR  
ASN  
VAL  
ASN  
TYR  
GLY  
ILE  
LEU  
SER  
SER  
VAL  
VAL  
LEU  
LEU  
GLY  
GLY  
VAL  
LEU  
SER  
LEU  
PHE  
GLY  
SER







## 4 Experimental information

Property	Value	Source
EM reconstruction method	SINGLE PARTICLE	Depositor
Imposed symmetry	POINT, C2	Depositor
Number of particles used	189181	Depositor
Resolution determination method	FSC 0.143 CUT-OFF	Depositor
CTF correction method	PHASE FLIPPING AND AMPLITUDE CORRECTION	Depositor
Microscope	FEI TITAN KRIOS	Depositor
Voltage (kV)	300	Depositor
Electron dose ( $e^-/\text{\AA}^2$ )	52	Depositor
Minimum defocus (nm)	600	Depositor
Maximum defocus (nm)	2000	Depositor
Magnification	130000	Depositor
Image detector	GATAN K3 BIOQUANTUM (6k x 4k)	Depositor
Maximum map value	0.075	Depositor
Minimum map value	-0.041	Depositor
Average map value	0.000	Depositor
Map value standard deviation	0.002	Depositor
Recommended contour level	0.013	Depositor
Map size (Å)	295.02002, 295.02002, 295.02002	wwPDB
Map dimensions	360, 360, 360	wwPDB
Map angles (°)	90.0, 90.0, 90.0	wwPDB
Pixel spacing (Å)	0.8195, 0.8195, 0.8195	Depositor

## 5 Model quality [i](#)

### 5.1 Standard geometry [i](#)

Bond lengths and bond angles in the following residue types are not validated in this section: CYZ

The Z score for a bond length (or angle) is the number of standard deviations the observed value is removed from the expected value. A bond length (or angle) with  $|Z| > 5$  is considered an outlier worth inspection. RMSZ is the root-mean-square of all Z scores of the bond lengths (or angles).

Mol	Chain	Bond lengths		Bond angles	
		RMSZ	# Z  >5	RMSZ	# Z  >5
1	A	0.27	0/2048	0.47	0/2759
1	B	0.27	0/2149	0.49	0/2891
1	C	0.26	0/2048	0.48	0/2759
1	D	0.26	0/2149	0.48	0/2891
All	All	0.26	0/8394	0.48	0/11300

There are no bond length outliers.

There are no bond angle outliers.

There are no chirality outliers.

There are no planarity outliers.

### 5.2 Too-close contacts [i](#)

In the following table, the Non-H and H(model) columns list the number of non-hydrogen atoms and hydrogen atoms in the chain respectively. The H(added) column lists the number of hydrogen atoms added and optimized by MolProbity. The Clashes column lists the number of clashes within the asymmetric unit, whereas Symm-Clashes lists symmetry-related clashes.

Mol	Chain	Non-H	H(model)	H(added)	Clashes	Symm-Clashes
1	A	2012	0	2021	33	0
1	B	2111	0	2150	31	0
1	C	2012	0	2021	38	0
1	D	2111	0	2150	30	0
2	A	10	0	5	0	0
2	B	10	0	5	0	0
2	C	10	0	5	0	0
2	D	10	0	5	1	0
3	A	24	0	16	0	0

*Continued on next page...*

Continued from previous page...

Mol	Chain	Non-H	H(model)	H(added)	Clashes	Symm-Clashes
3	B	24	0	16	0	0
3	C	24	0	16	0	0
3	D	24	0	16	0	0
4	A	2	0	0	0	0
4	B	3	0	0	1	0
4	C	2	0	0	0	0
4	D	3	0	0	2	0
All	All	8392	0	8426	130	0

The all-atom clashscore is defined as the number of clashes found per 1000 atoms (including hydrogen atoms). The all-atom clashscore for this structure is 8.

The worst 5 of 130 close contacts within the same asymmetric unit are listed below, sorted by their clash magnitude.

Atom-1	Atom-2	Interatomic distance (Å)	Clash overlap (Å)
1:D:498:LEU:HD13	1:D:705:GLU:HG3	1.56	0.84
1:B:457:THR:HG22	1:B:459:ILE:HG23	1.75	0.69
1:D:730:LYS:NZ	4:D:1401:HOH:O	2.26	0.68
1:C:500:ILE:HD12	1:C:655:THR:HG22	1.80	0.64
1:C:664:ILE:HB	1:C:667:PHE:HD2	1.63	0.64

There are no symmetry-related clashes.

## 5.3 Torsion angles [i](#)

### 5.3.1 Protein backbone [i](#)

In the following table, the Percentiles column shows the percent Ramachandran outliers of the chain as a percentile score with respect to all PDB entries followed by that with respect to all EM entries.

The Analysed column shows the number of residues for which the backbone conformation was analysed, and the total number of residues.

Mol	Chain	Analysed	Favoured	Allowed	Outliers	Percentiles	
1	A	256/889 (29%)	247 (96%)	9 (4%)	0	100	100
1	B	266/889 (30%)	258 (97%)	8 (3%)	0	100	100
1	C	256/889 (29%)	244 (95%)	11 (4%)	1 (0%)	34	68
1	D	266/889 (30%)	259 (97%)	7 (3%)	0	100	100

Continued on next page...

Continued from previous page...

Mol	Chain	Analysed	Favoured	Allowed	Outliers	Percentiles
All	All	1044/3556 (29%)	1008 (97%)	35 (3%)	1 (0%)	54 83

All (1) Ramachandran outliers are listed below:

Mol	Chain	Res	Type
1	C	634	GLU

### 5.3.2 Protein sidechains [i](#)

In the following table, the Percentiles column shows the percent sidechain outliers of the chain as a percentile score with respect to all PDB entries followed by that with respect to all EM entries.

The Analysed column shows the number of residues for which the sidechain conformation was analysed, and the total number of residues.

Mol	Chain	Analysed	Rotameric	Outliers	Percentiles
1	A	215/763 (28%)	212 (99%)	3 (1%)	67 85
1	B	230/763 (30%)	224 (97%)	6 (3%)	46 74
1	C	215/763 (28%)	209 (97%)	6 (3%)	43 72
1	D	230/763 (30%)	226 (98%)	4 (2%)	60 83
All	All	890/3052 (29%)	871 (98%)	19 (2%)	56 78

5 of 19 residues with a non-rotameric sidechain are listed below:

Mol	Chain	Res	Type
1	C	767	TRP
1	D	675	ARG
1	D	767	TRP
1	D	651	ASP
1	B	773	CYS

Sometimes sidechains can be flipped to improve hydrogen bonding and reduce clashes. There are no such sidechains identified.

### 5.3.3 RNA [i](#)

There are no RNA molecules in this entry.

## 5.4 Non-standard residues in protein, DNA, RNA chains [i](#)

There are no non-standard protein/DNA/RNA residues in this entry.

## 5.5 Carbohydrates [i](#)

There are no monosaccharides in this entry.

## 5.6 Ligand geometry [i](#)

8 ligands are modelled in this entry.

In the following table, the Counts columns list the number of bonds (or angles) for which Mogul statistics could be retrieved, the number of bonds (or angles) that are observed in the model and the number of bonds (or angles) that are defined in the Chemical Component Dictionary. The Link column lists molecule types, if any, to which the group is linked. The Z score for a bond length (or angle) is the number of standard deviations the observed value is removed from the expected value. A bond length (or angle) with  $|Z| > 2$  is considered an outlier worth inspection. RMSZ is the root-mean-square of all Z scores of the bond lengths (or angles).

Mol	Type	Chain	Res	Link	Bond lengths			Bond angles		
					Counts	RMSZ	# Z  > 2	Counts	RMSZ	# Z  > 2
3	CYZ	D	1302	-	26,27,27	7.62	20 (76%)	38,44,44	2.35	10 (26%)
3	CYZ	B	1302	-	26,27,27	7.61	20 (76%)	38,44,44	2.37	10 (26%)
3	CYZ	C	1302	-	26,27,27	7.60	20 (76%)	38,44,44	2.36	10 (26%)
2	GLU	C	1301	-	8,9,9	1.07	1 (12%)	10,11,11	1.27	2 (20%)
2	GLU	A	1301	-	8,9,9	1.08	1 (12%)	10,11,11	1.28	2 (20%)
3	CYZ	A	1302	-	26,27,27	7.60	20 (76%)	38,44,44	2.35	9 (23%)
2	GLU	D	1301	-	8,9,9	1.10	1 (12%)	10,11,11	1.23	2 (20%)
2	GLU	B	1301	-	8,9,9	1.09	1 (12%)	10,11,11	1.24	2 (20%)

In the following table, the Chirals column lists the number of chiral outliers, the number of chiral centers analysed, the number of these observed in the model and the number defined in the Chemical Component Dictionary. Similar counts are reported in the Torsion and Rings columns. '-' means no outliers of that kind were identified.

Mol	Type	Chain	Res	Link	Chirals	Torsions	Rings
3	CYZ	D	1302	-	-	0/6/42/42	0/5/4/4
3	CYZ	B	1302	-	-	0/6/42/42	0/5/4/4
3	CYZ	C	1302	-	-	0/6/42/42	0/5/4/4
2	GLU	C	1301	-	-	3/9/9/9	-
2	GLU	A	1301	-	-	3/9/9/9	-

*Continued on next page...*

Continued from previous page...

Mol	Type	Chain	Res	Link	Chirals	Torsions	Rings
3	CYZ	A	1302	-	-	0/6/42/42	0/5/4/4
2	GLU	D	1301	-	-	3/9/9/9	-
2	GLU	B	1301	-	-	0/9/9/9	-

The worst 5 of 84 bond length outliers are listed below:

Mol	Chain	Res	Type	Atoms	Z	Observed(Å)	Ideal(Å)
3	D	1302	CYZ	O2-S1	20.51	1.66	1.43
3	B	1302	CYZ	O2-S1	20.37	1.66	1.43
3	A	1302	CYZ	O2-S1	20.37	1.66	1.43
3	C	1302	CYZ	O2-S1	20.34	1.66	1.43
3	B	1302	CYZ	O1-S1	19.29	1.65	1.43

The worst 5 of 47 bond angle outliers are listed below:

Mol	Chain	Res	Type	Atoms	Z	Observed(°)	Ideal(°)
3	C	1302	CYZ	O2-S1-O1	-6.56	111.76	118.46
3	A	1302	CYZ	O2-S1-O1	-6.48	111.85	118.46
3	D	1302	CYZ	O2-S1-O1	-6.25	112.08	118.46
3	B	1302	CYZ	O2-S1-O1	-6.23	112.10	118.46
3	D	1302	CYZ	C9-S1-N1	6.21	111.35	103.43

There are no chirality outliers.

5 of 9 torsion outliers are listed below:

Mol	Chain	Res	Type	Atoms
2	C	1301	GLU	CA-CB-CG-CD
2	A	1301	GLU	CA-CB-CG-CD
2	C	1301	GLU	OE1-CD-CG-CB
2	A	1301	GLU	OE1-CD-CG-CB
2	C	1301	GLU	OE2-CD-CG-CB

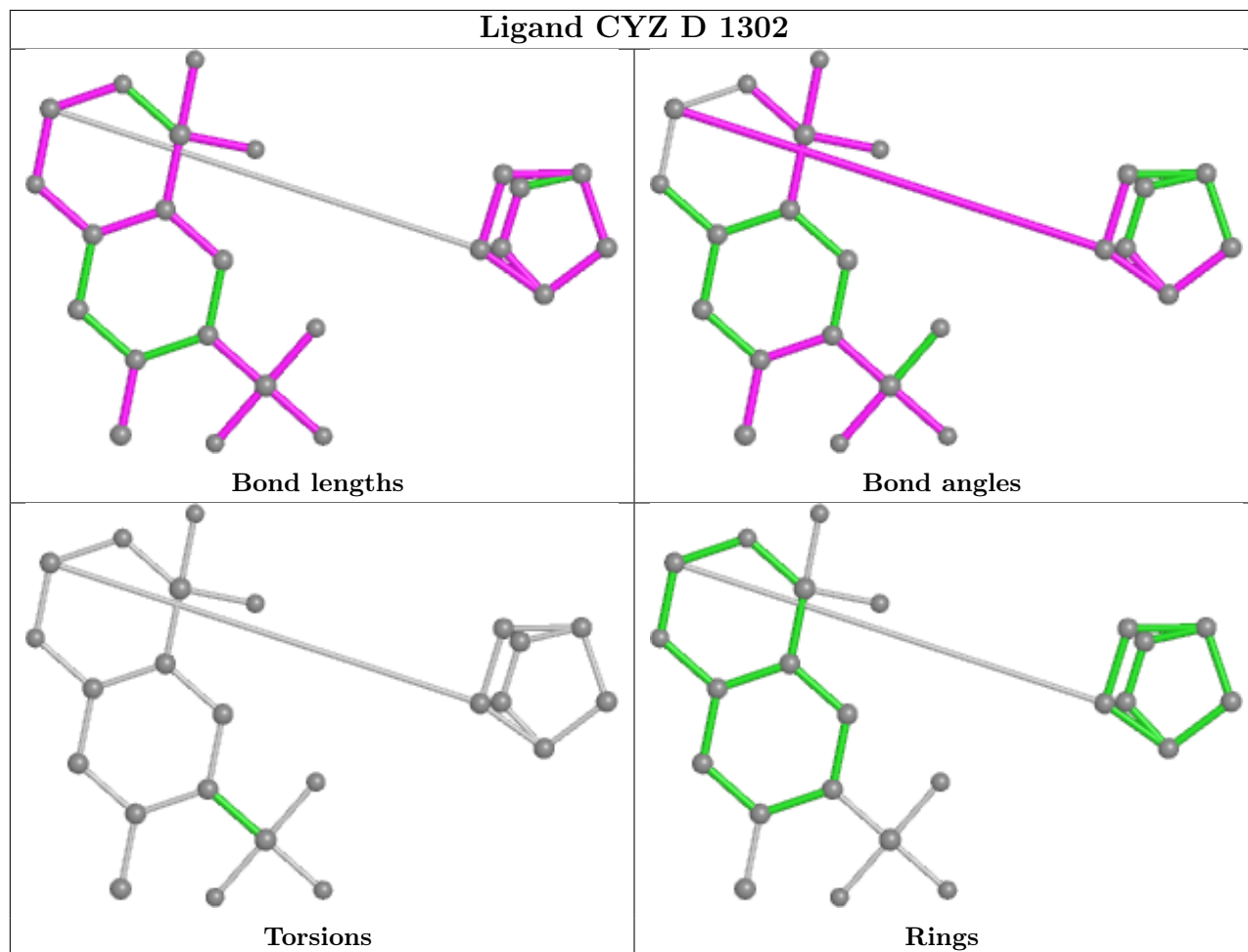
There are no ring outliers.

1 monomer is involved in 1 short contact:

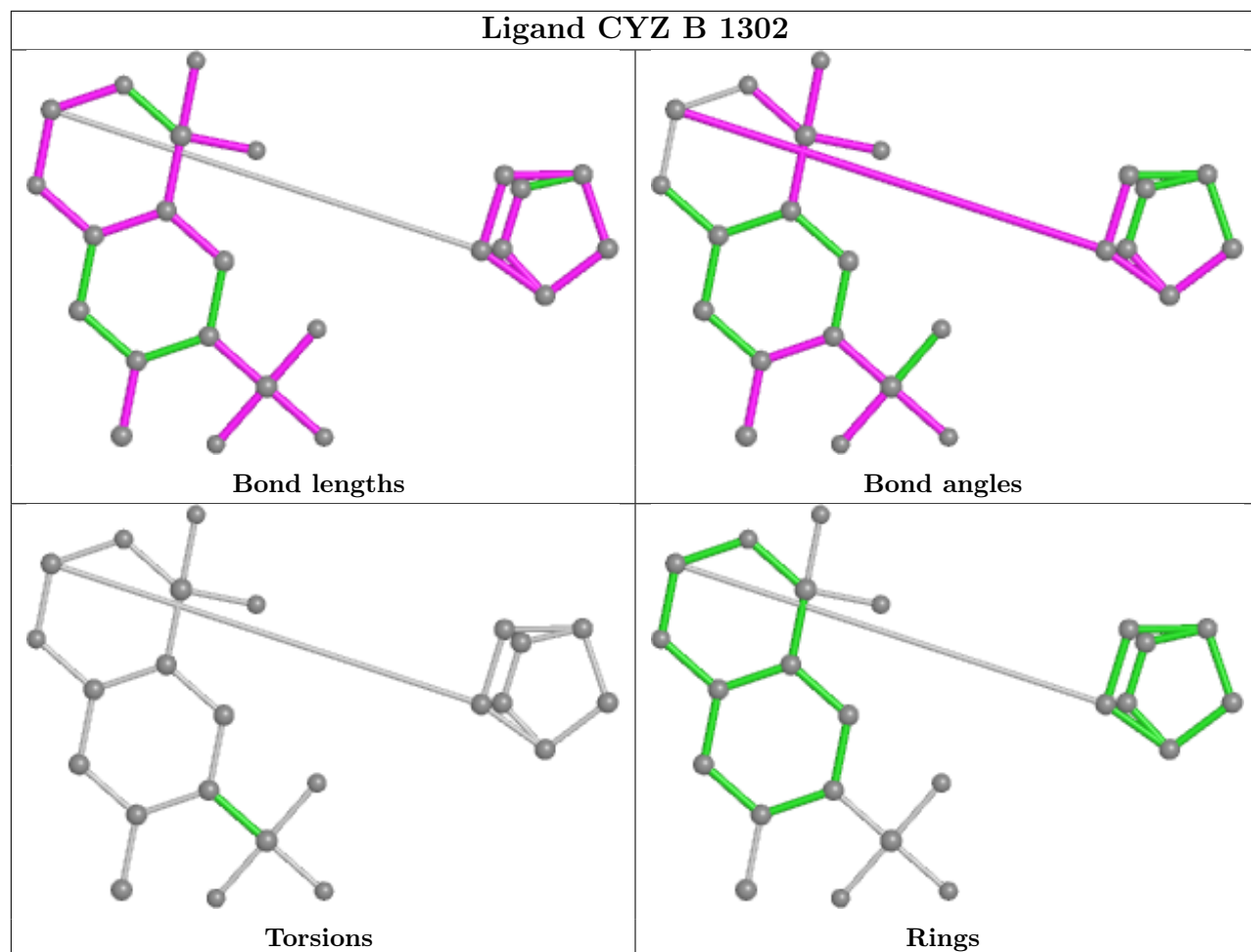
Mol	Chain	Res	Type	Clashes	Symm-Clashes
2	D	1301	GLU	1	0

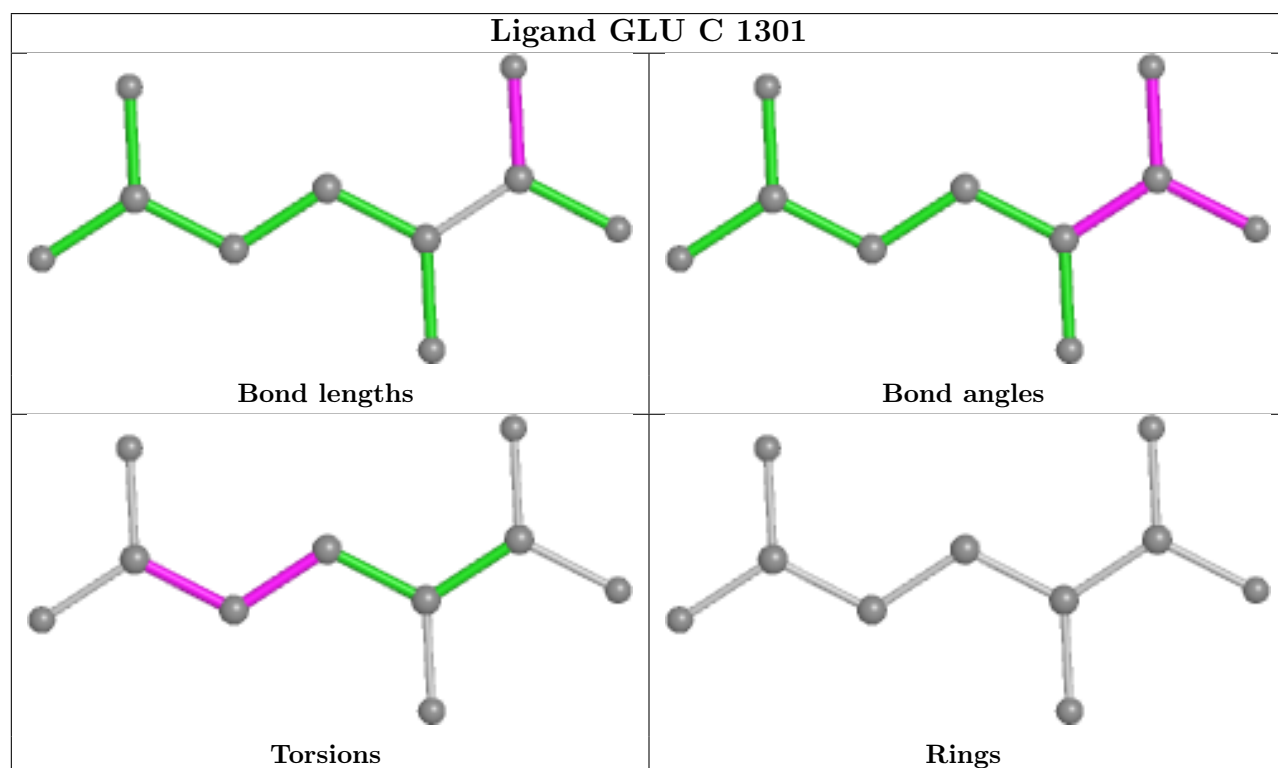
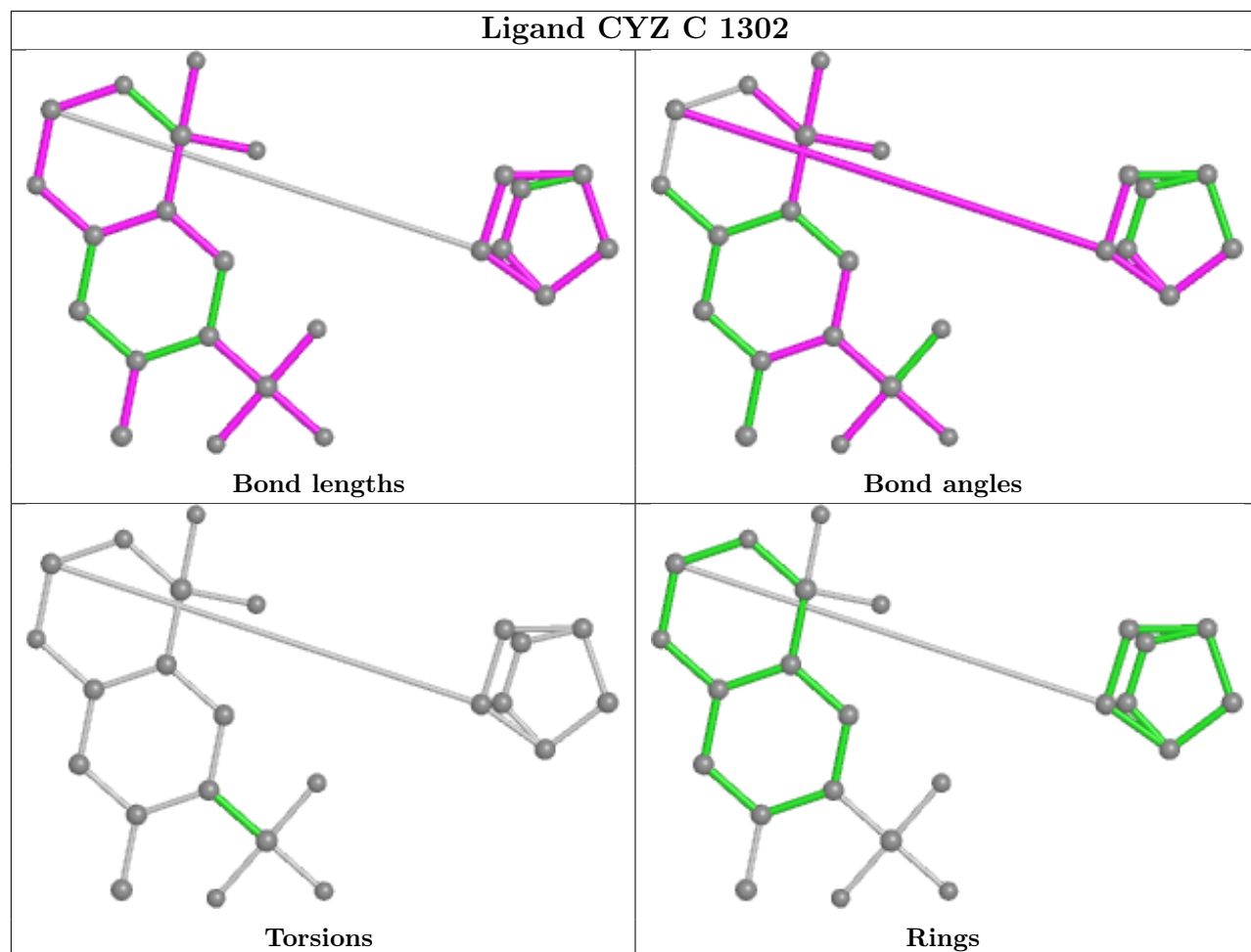
The following is a two-dimensional graphical depiction of Mogul quality analysis of bond lengths, bond angles, torsion angles, and ring geometry for all instances of the Ligand of Interest. In addition, ligands with molecular weight > 250 and outliers as shown on the validation Tables will

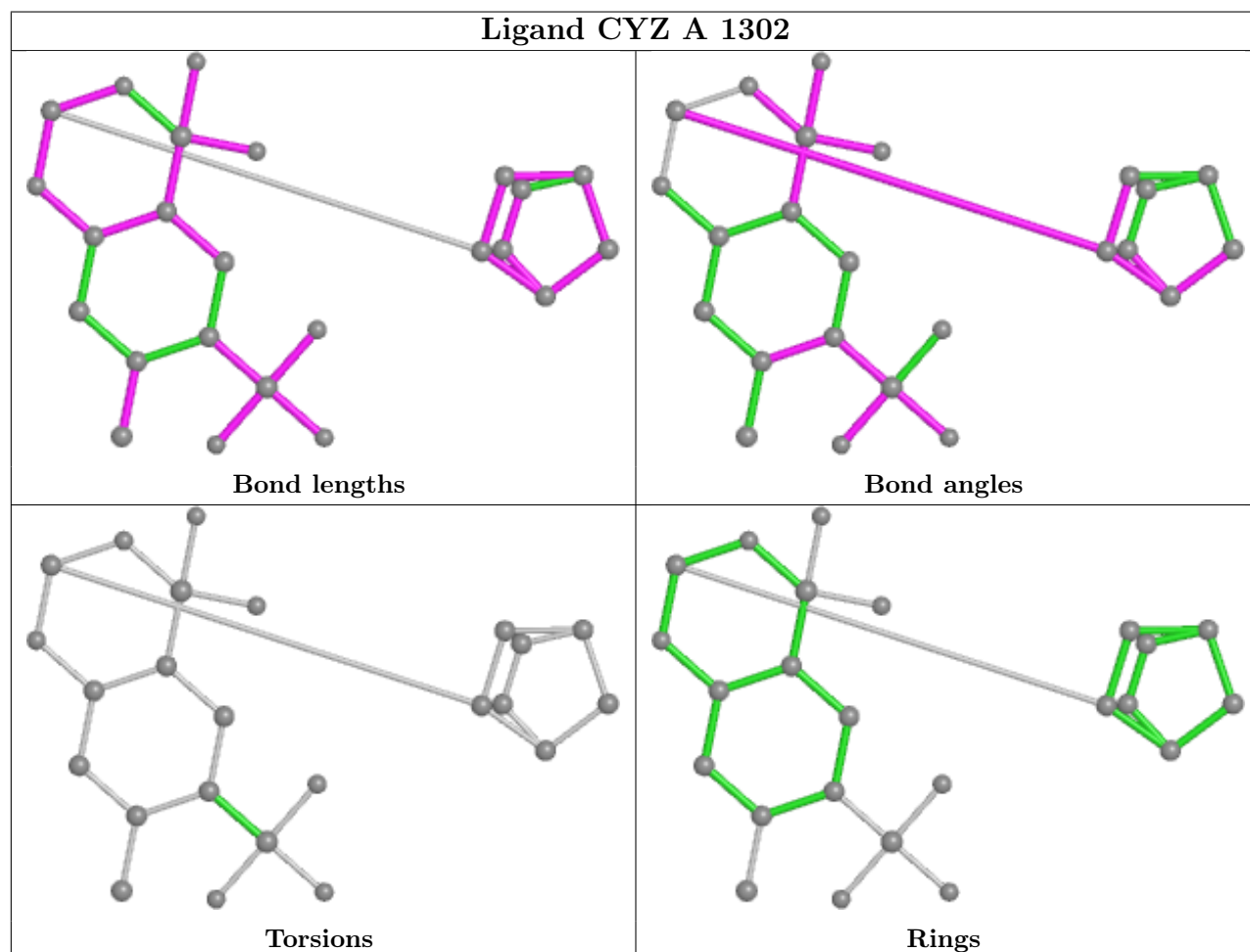
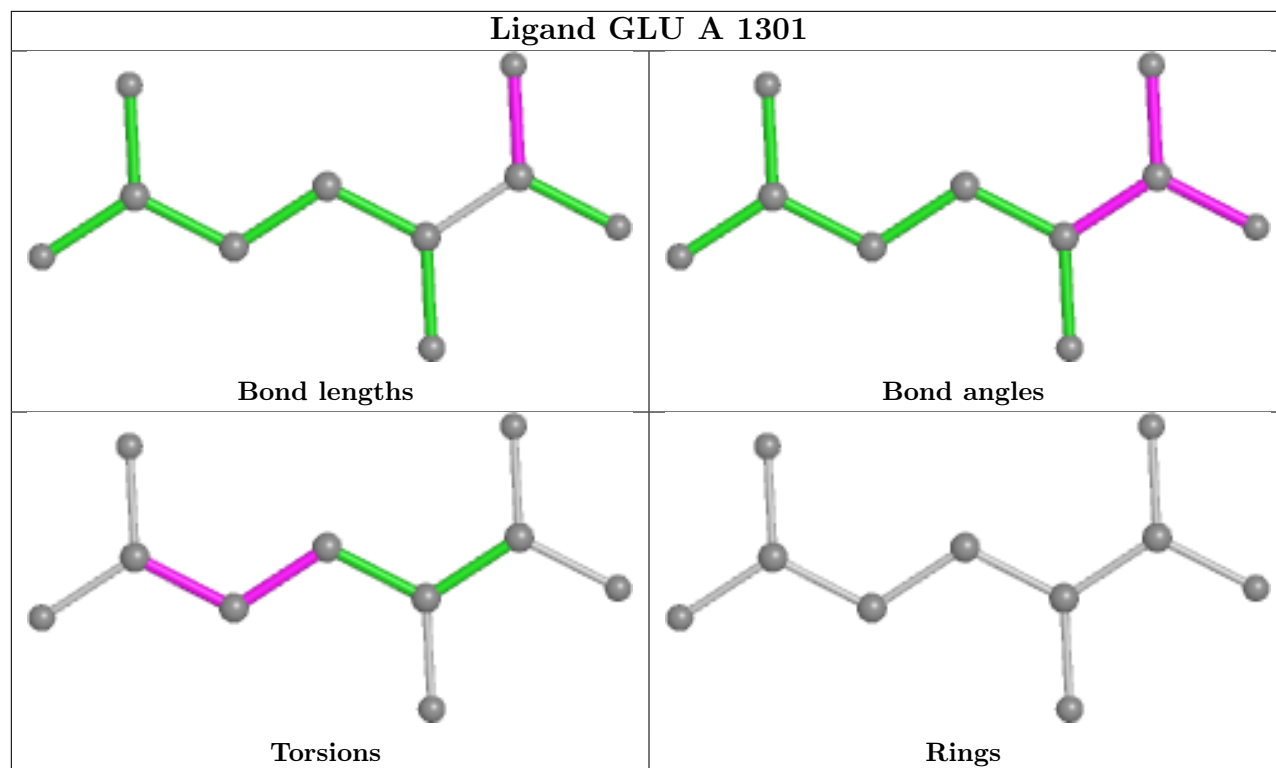
also be included. For torsion angles, if less than 5% of the Mogul distribution of torsion angles is within 10 degrees of the torsion angle in question, then that torsion angle is considered an outlier. Any bond that is central to one or more torsion angles identified as an outlier by Mogul will be highlighted in the graph. For rings, the root-mean-square deviation (RMSD) between the ring in question and similar rings identified by Mogul is calculated over all ring torsion angles. If the average RMSD is greater than 60 degrees and the minimal RMSD between the ring in question and any Mogul-identified rings is also greater than 60 degrees, then that ring is considered an outlier. The outliers are highlighted in purple. The color gray indicates Mogul did not find sufficient equivalents in the CSD to analyse the geometry.

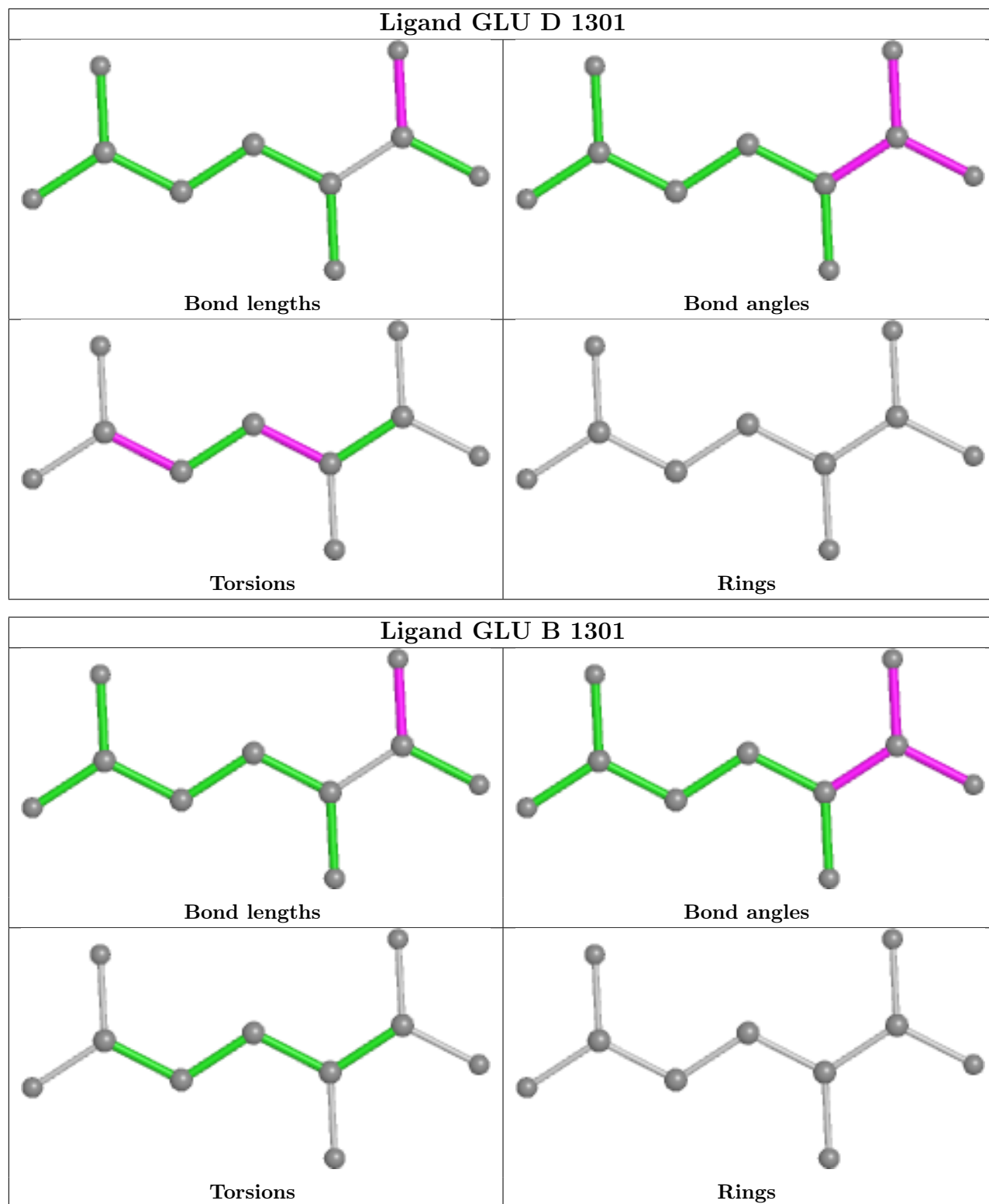












## 5.7 Other polymers [i](#)

There are no such residues in this entry.

## 5.8 Polymer linkage issues

There are no chain breaks in this entry.

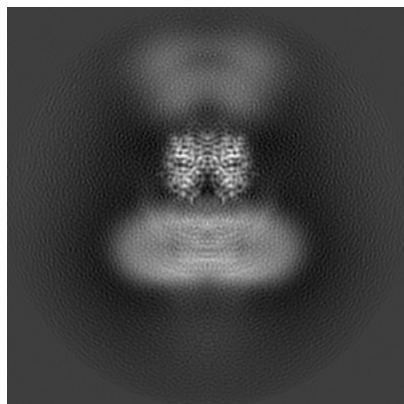
## 6 Map visualisation [i](#)

This section contains visualisations of the EMDB entry EMD-29380. These allow visual inspection of the internal detail of the map and identification of artifacts.

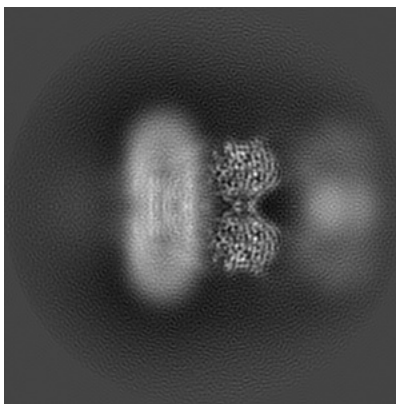
Images derived from a raw map, generated by summing the deposited half-maps, are presented below the corresponding image components of the primary map to allow further visual inspection and comparison with those of the primary map.

### 6.1 Orthogonal projections [i](#)

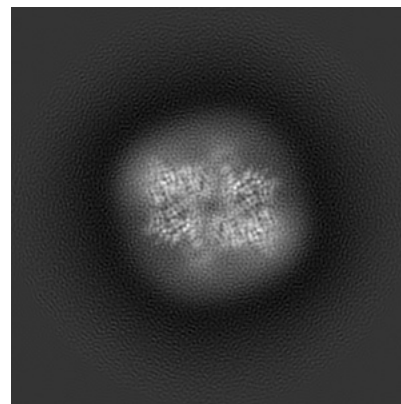
#### 6.1.1 Primary map



X

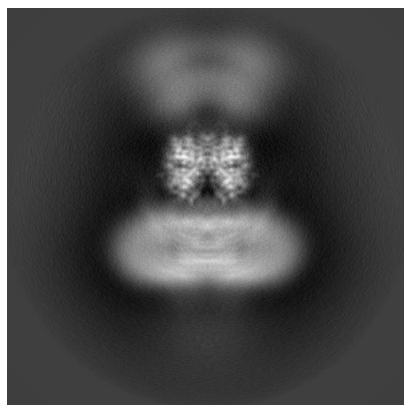


Y

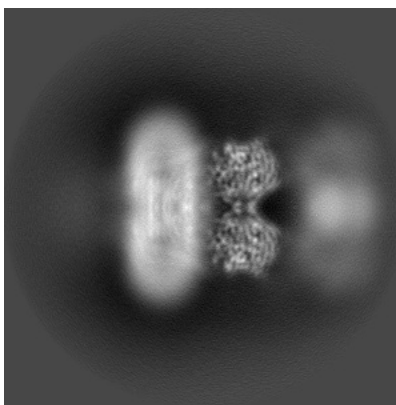


Z

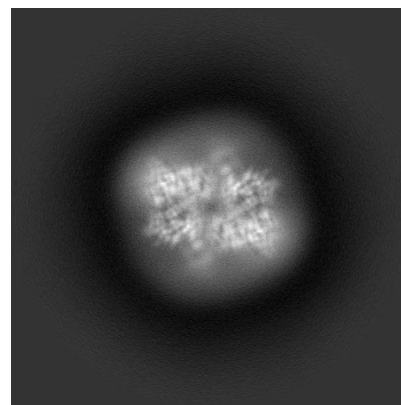
#### 6.1.2 Raw map



X



Y

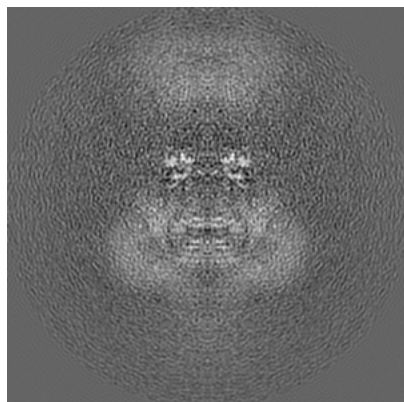


Z

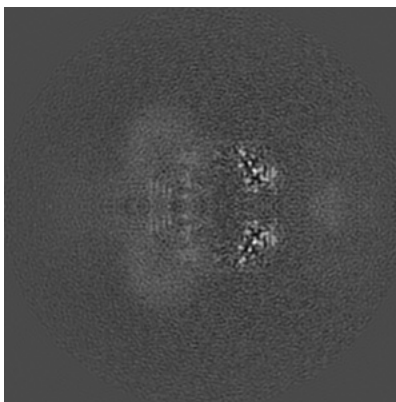
The images above show the map projected in three orthogonal directions.

## 6.2 Central slices [i](#)

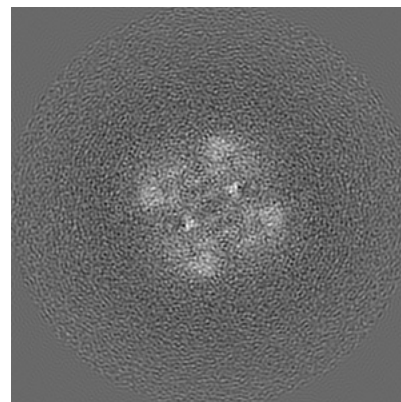
### 6.2.1 Primary map



X Index: 180

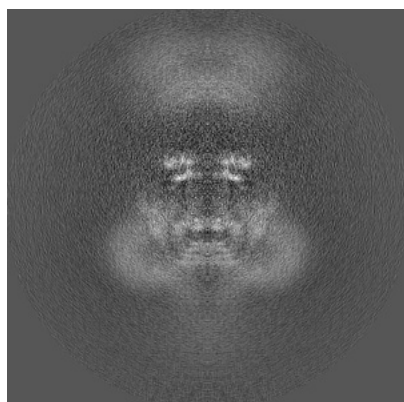


Y Index: 180

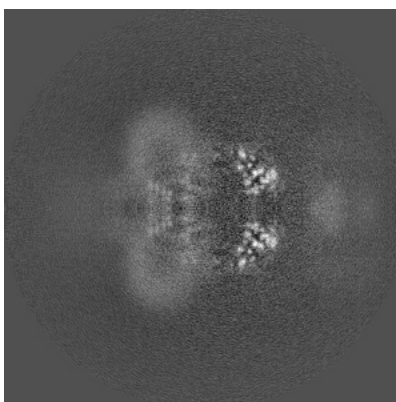


Z Index: 180

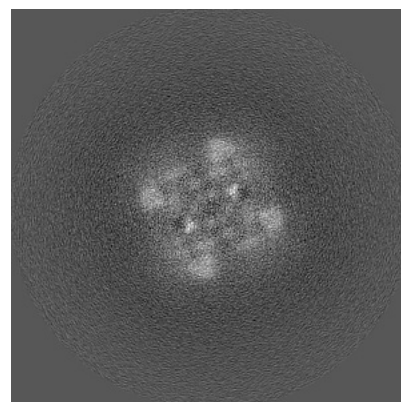
### 6.2.2 Raw map



X Index: 180



Y Index: 180

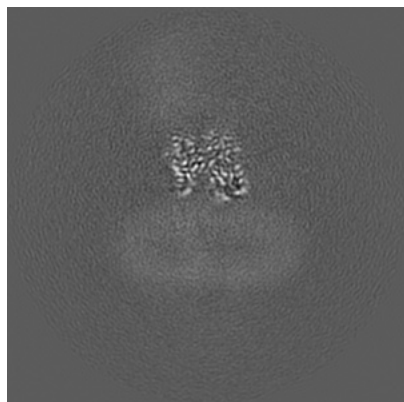


Z Index: 180

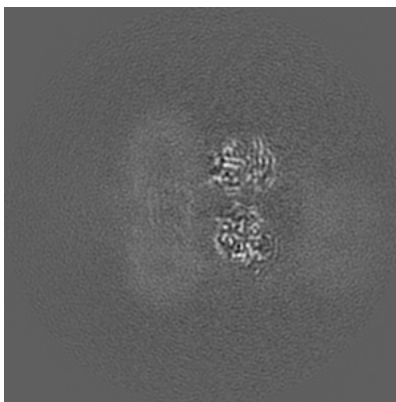
The images above show central slices of the map in three orthogonal directions.

## 6.3 Largest variance slices [i](#)

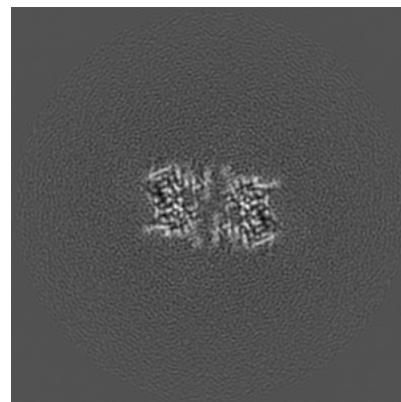
### 6.3.1 Primary map



X Index: 215

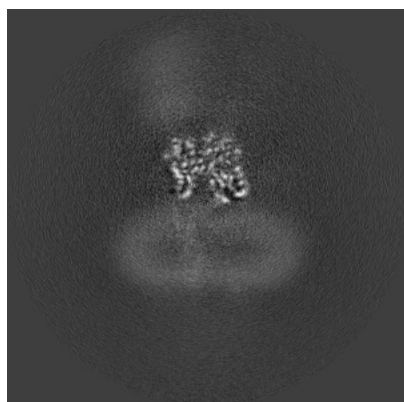


Y Index: 201

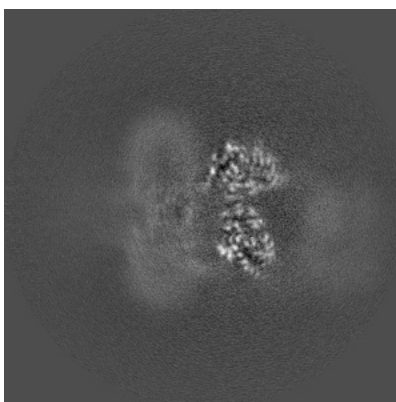


Z Index: 225

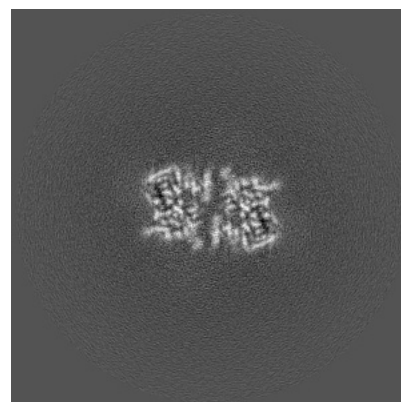
### 6.3.2 Raw map



X Index: 215



Y Index: 197



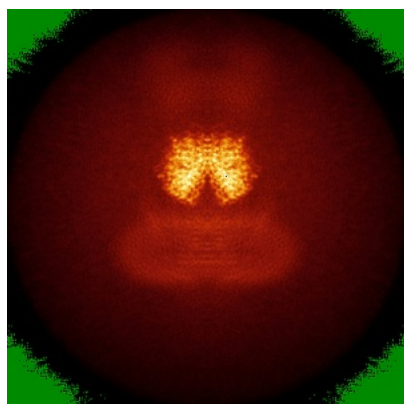
Z Index: 225

The images above show the largest variance slices of the map in three orthogonal directions.

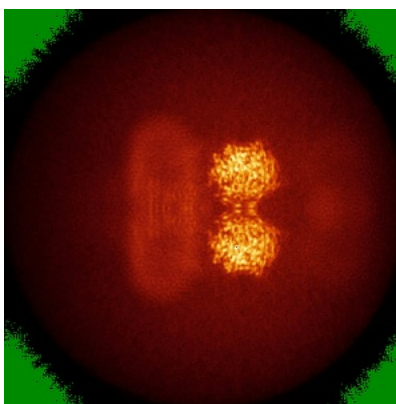


## 6.4 Orthogonal standard-deviation projections (False-color) [i](#)

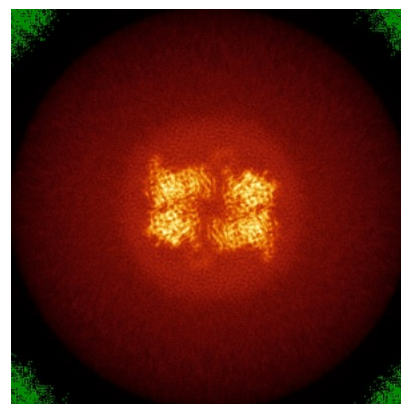
### 6.4.1 Primary map



X

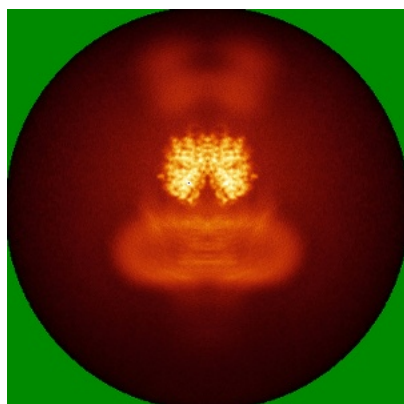


Y

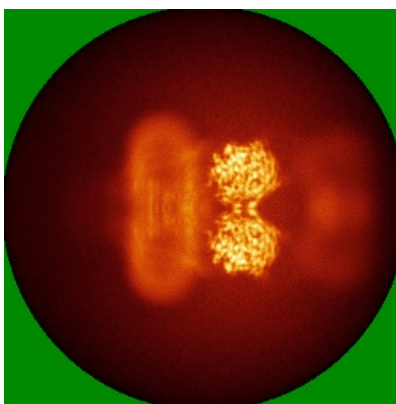


Z

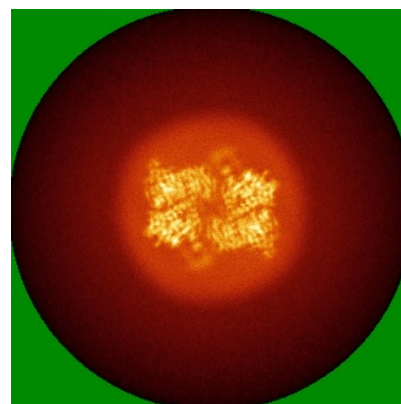
### 6.4.2 Raw map



X



Y

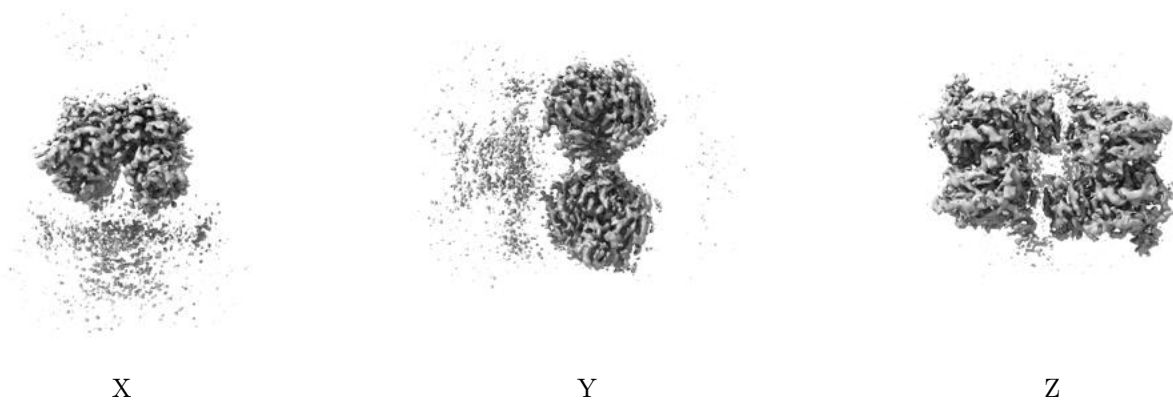


Z

The images above show the map standard deviation projections with false color in three orthogonal directions. Minimum values are shown in green, max in blue, and dark to light orange shades represent small to large values respectively.

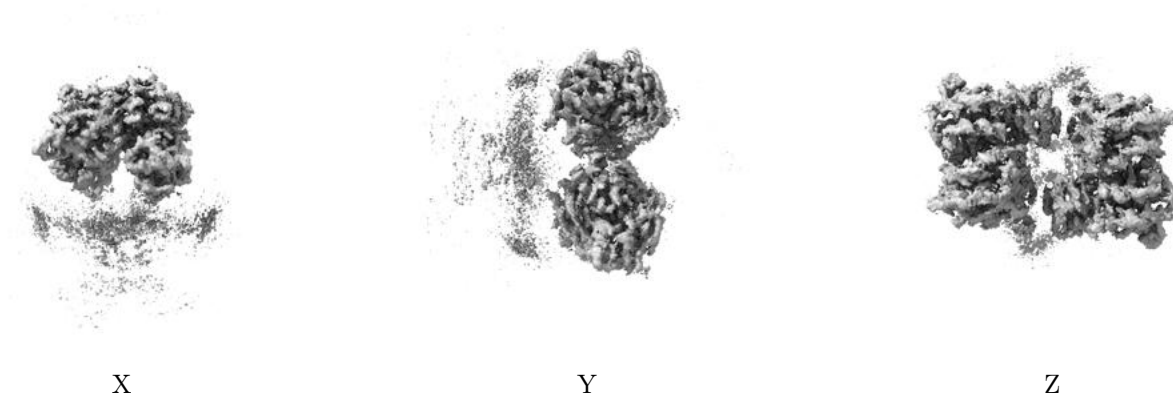
## 6.5 Orthogonal surface views [i](#)

### 6.5.1 Primary map



The images above show the 3D surface view of the map at the recommended contour level 0.013. These images, in conjunction with the slice images, may facilitate assessment of whether an appropriate contour level has been provided.

### 6.5.2 Raw map



These images show the 3D surface of the raw map. The raw map's contour level was selected so that its surface encloses the same volume as the primary map does at its recommended contour level.

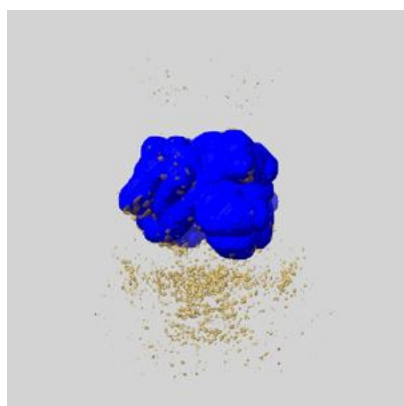
## 6.6 Mask visualisation [i](#)

This section shows the 3D surface view of the primary map at 50% transparency overlaid with the specified mask at 0% transparency

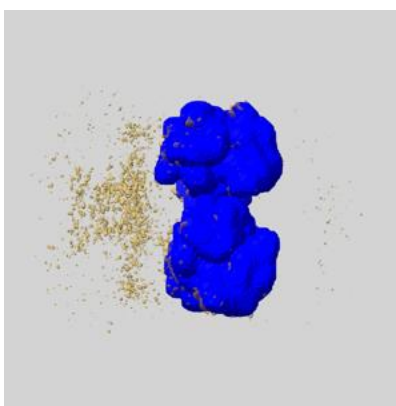
A mask typically either:

- Encompasses the whole structure
- Separates out a domain, a functional unit, a monomer or an area of interest from a larger structure

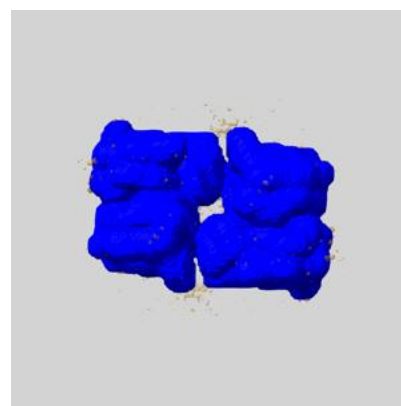
### 6.6.1 emd\_29380\_msk\_1.map [i](#)



X



Y

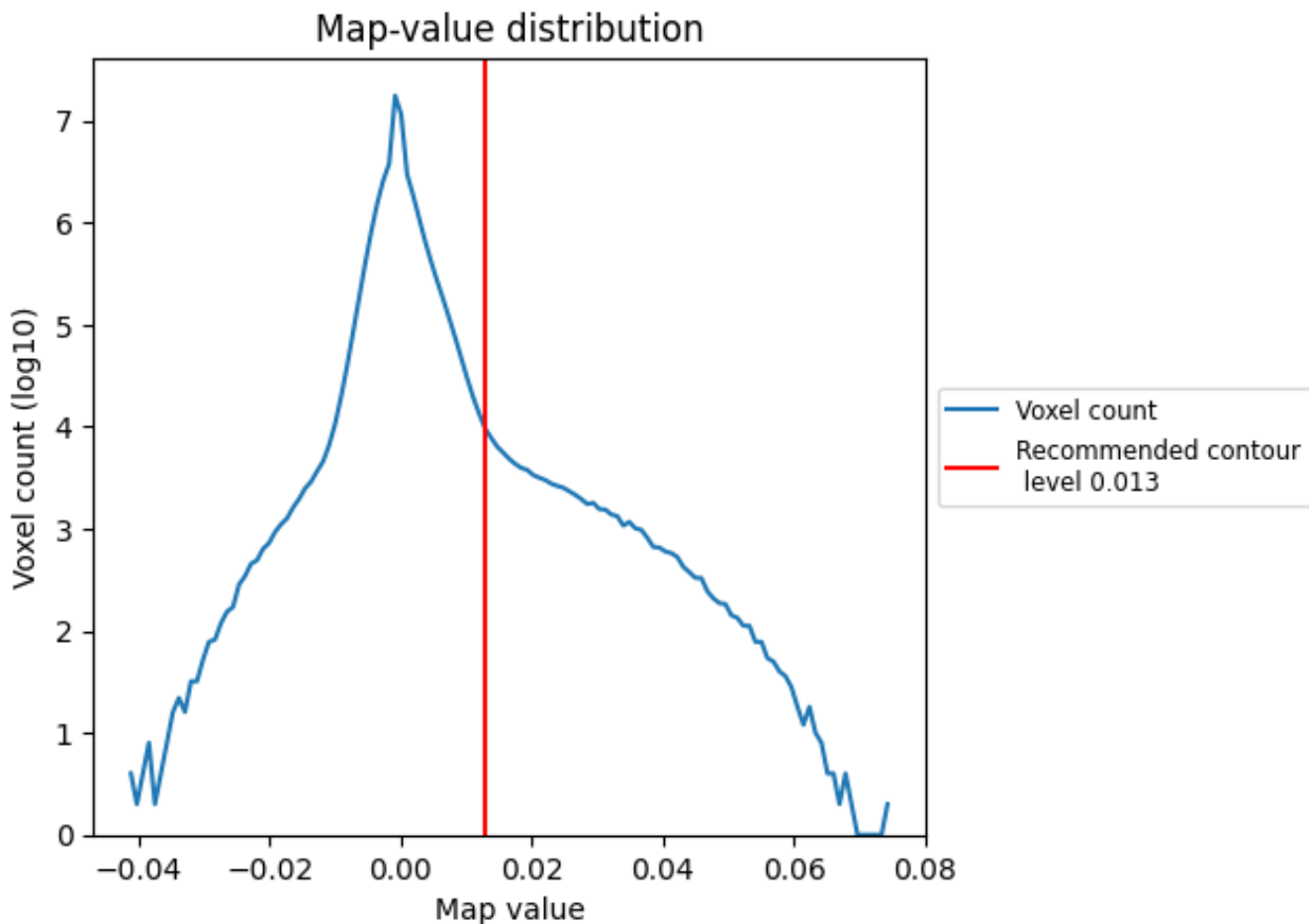


Z

## 7 Map analysis [i](#)

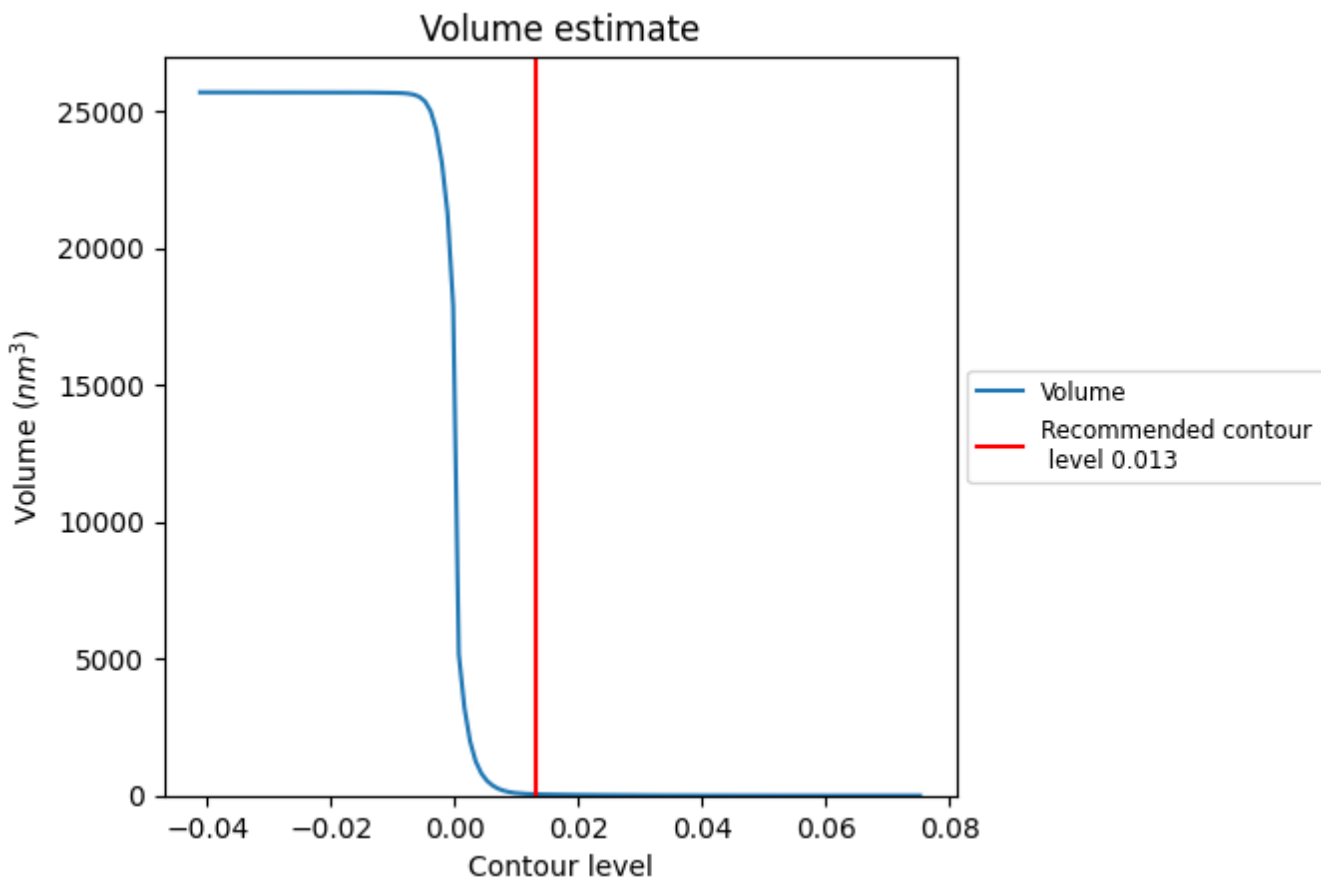
This section contains the results of statistical analysis of the map.

### 7.1 Map-value distribution [i](#)



The map-value distribution is plotted in 128 intervals along the x-axis. The y-axis is logarithmic. A spike in this graph at zero usually indicates that the volume has been masked.

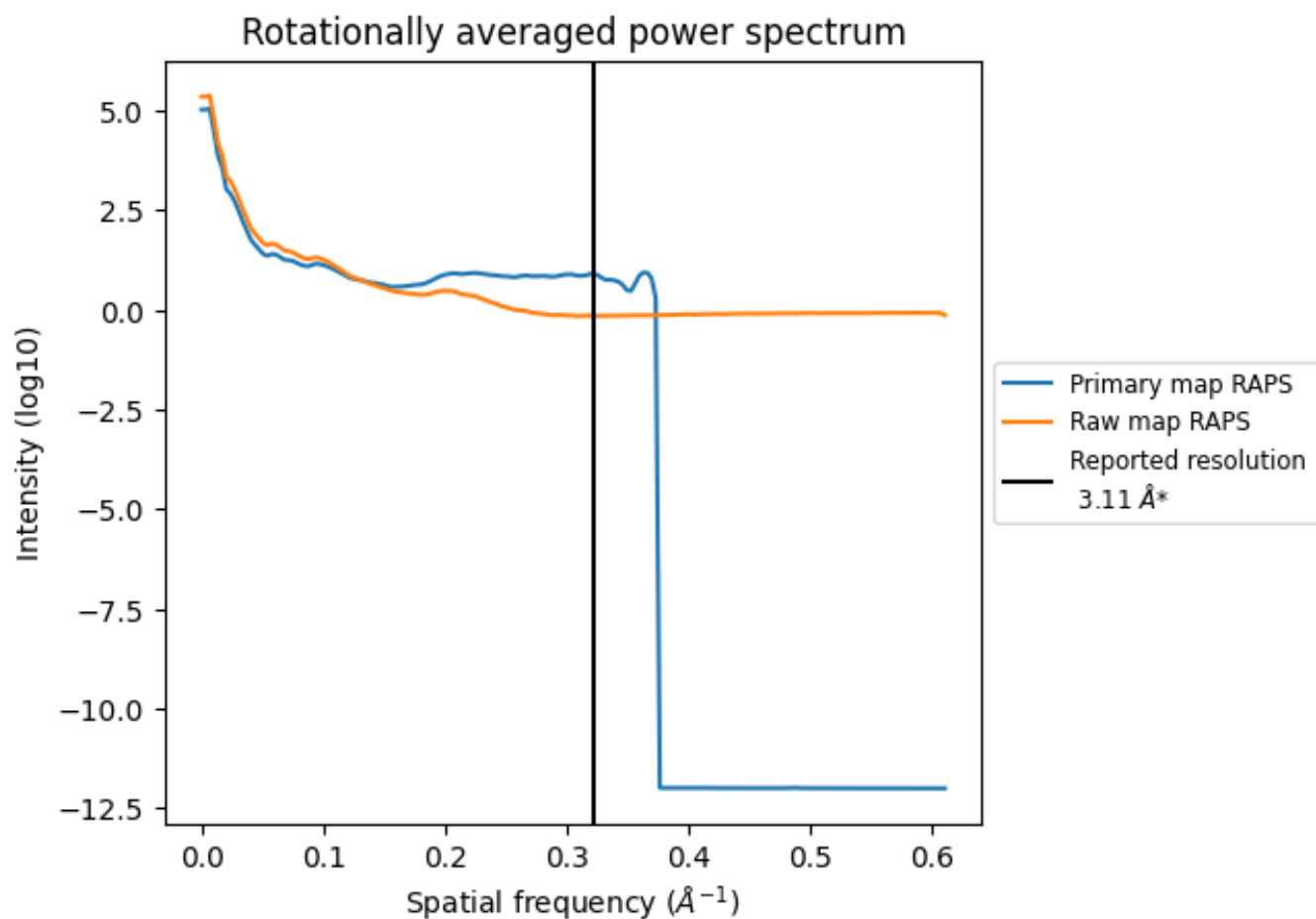
## 7.2 Volume estimate [\(i\)](#)



The volume at the recommended contour level is 50 nm<sup>3</sup>; this corresponds to an approximate mass of 45 kDa.

The volume estimate graph shows how the enclosed volume varies with the contour level. The recommended contour level is shown as a vertical line and the intersection between the line and the curve gives the volume of the enclosed surface at the given level.

### 7.3 Rotationally averaged power spectrum [i](#)

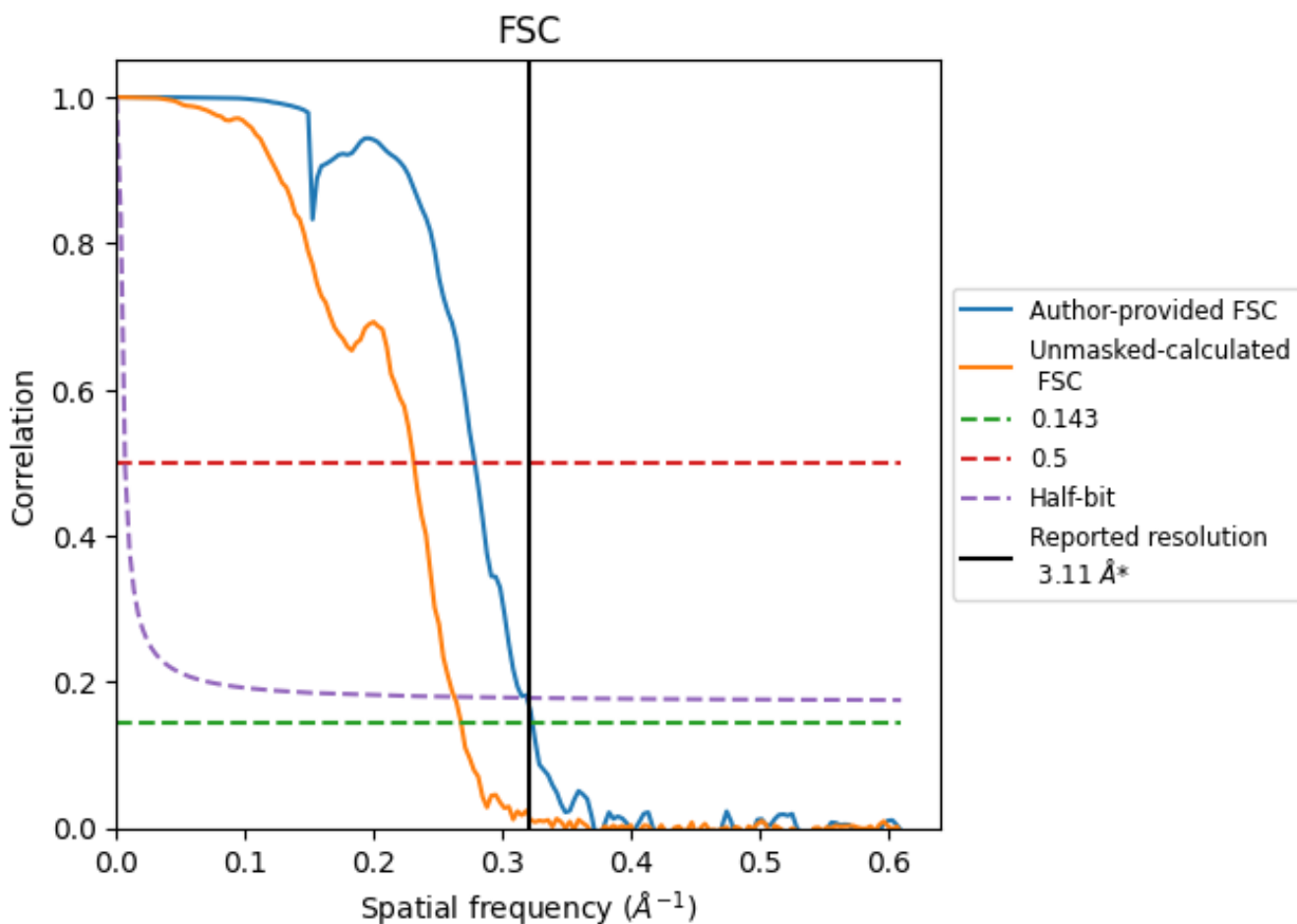


\*Reported resolution corresponds to spatial frequency of 0.322 Å<sup>-1</sup>

## 8 Fourier-Shell correlation [i](#)

Fourier-Shell Correlation (FSC) is the most commonly used method to estimate the resolution of single-particle and subtomogram-averaged maps. The shape of the curve depends on the imposed symmetry, mask and whether or not the two 3D reconstructions used were processed from a common reference. The reported resolution is shown as a black line. A curve is displayed for the half-bit criterion in addition to lines showing the 0.143 gold standard cut-off and 0.5 cut-off.

### 8.1 FSC [i](#)



\*Reported resolution corresponds to spatial frequency of 0.322 Å<sup>-1</sup>

## 8.2 Resolution estimates [i](#)

Resolution estimate (Å)	Estimation criterion (FSC cut-off)		
	0.143	0.5	Half-bit
Reported by author	3.11	-	-
Author-provided FSC curve	3.09	3.59	3.13
Unmasked-calculated*	3.73	4.33	3.81

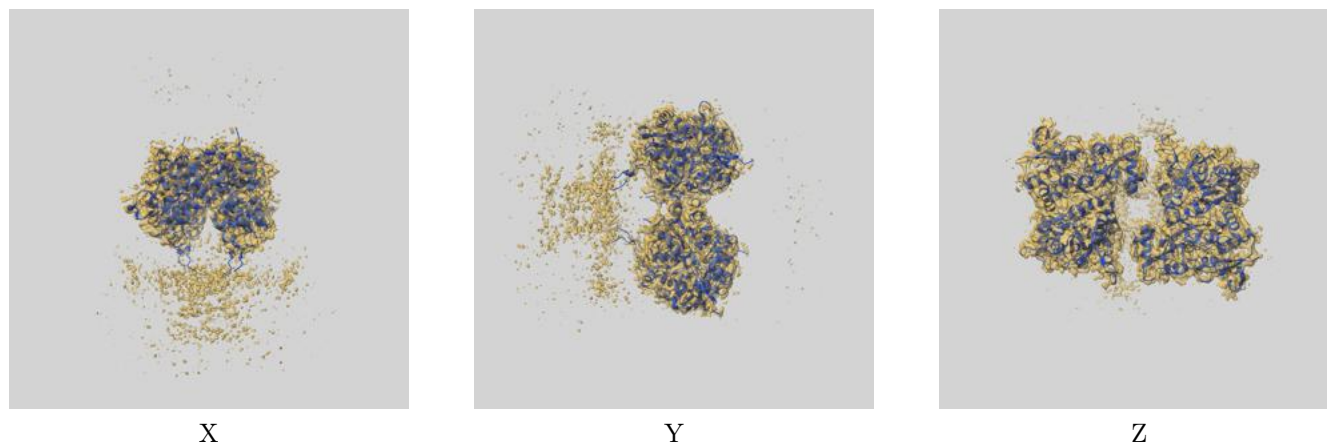
\*Resolution estimate based on FSC curve calculated by comparison of deposited half-maps. The value from deposited half-maps intersecting FSC 0.143 CUT-OFF 3.73 differs from the reported value 3.11 by more than 10 %



## 9 Map-model fit [i](#)

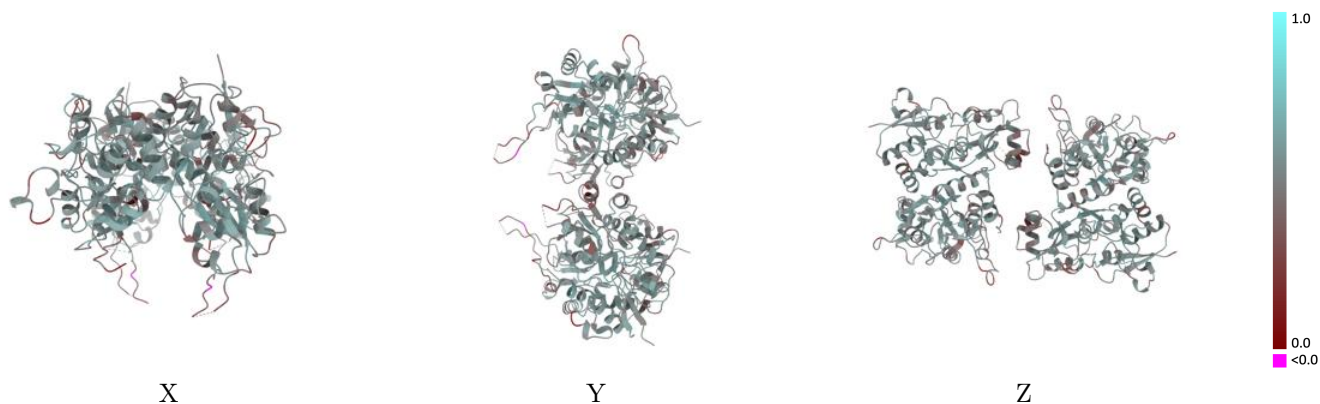
This section contains information regarding the fit between EMDB map EMD-29380 and PDB model 8FQ8. Per-residue inclusion information can be found in section [3](#) on page [6](#).

### 9.1 Map-model overlay [i](#)



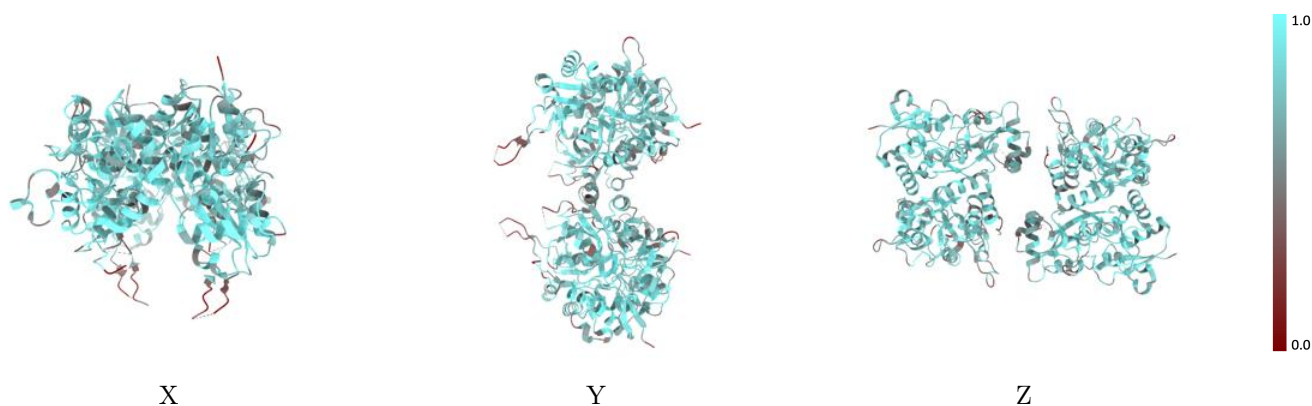
The images above show the 3D surface view of the map at the recommended contour level 0.013 at 50% transparency in yellow overlaid with a ribbon representation of the model coloured in blue. These images allow for the visual assessment of the quality of fit between the atomic model and the map.

## 9.2 Q-score mapped to coordinate model [i](#)



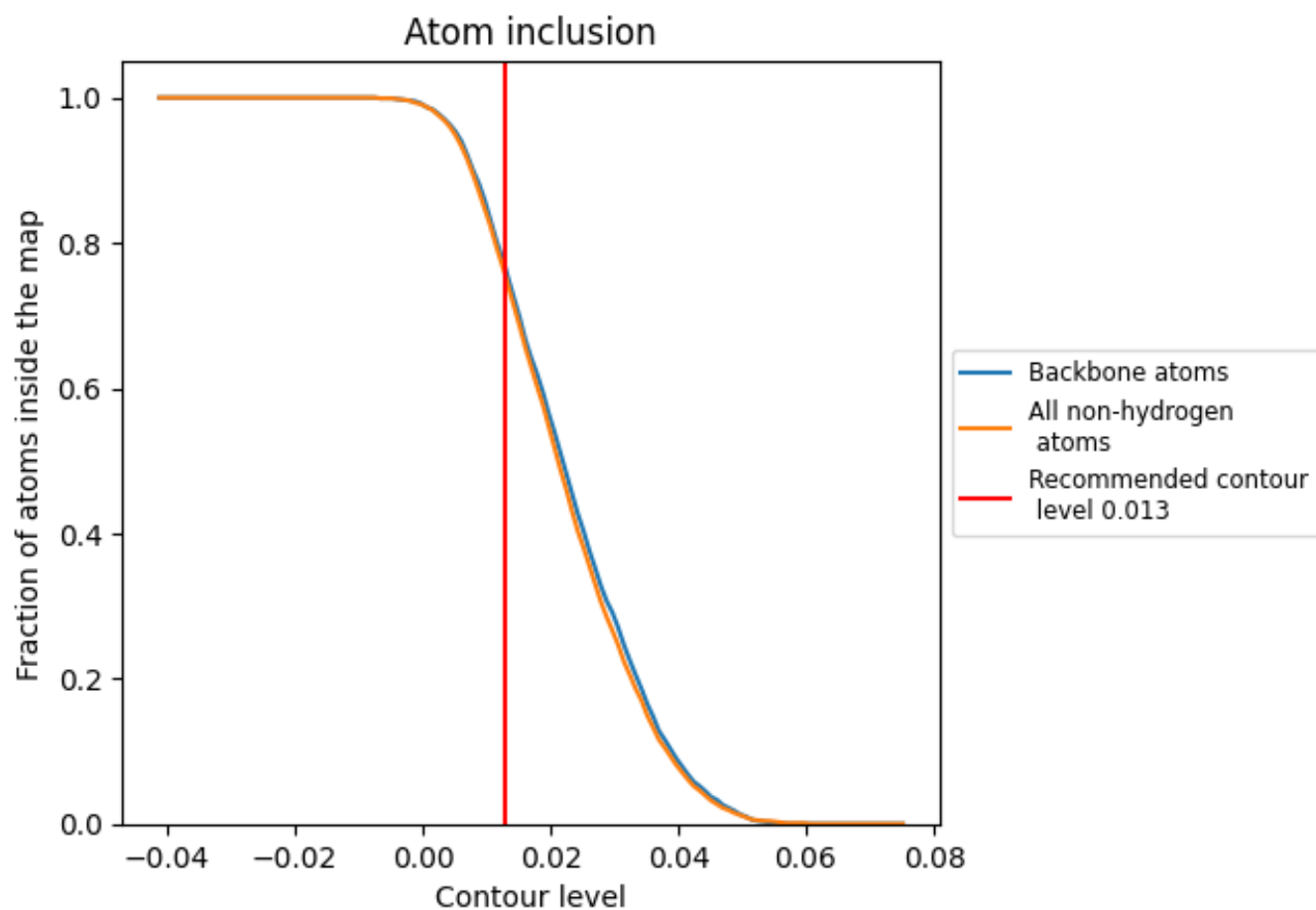
The images above show the model with each residue coloured according to its Q-score. This shows their resolvability in the map with higher Q-score values reflecting better resolvability. Please note: Q-score is calculating the resolvability of atoms, and thus high values are only expected at resolutions at which atoms can be resolved. Low Q-score values may therefore be expected for many entries.

## 9.3 Atom inclusion mapped to coordinate model [i](#)



The images above show the model with each residue coloured according to its atom inclusion. This shows to what extent they are inside the map at the recommended contour level (0.013).











## 9.4 Atom inclusion [i](#)



At the recommended contour level, 76% of all backbone atoms, 75% of all non-hydrogen atoms, are inside the map.

## 9.5 Map-model fit summary

The table lists the average atom inclusion at the recommended contour level (0.013) and Q-score for the entire model and for each chain.

Chain	Atom inclusion	Q-score
All	 0.7540	 0.5110
A	 0.7780	 0.5140
B	 0.7460	 0.5100
C	 0.7720	 0.5120
D	 0.7420	 0.5070

