



Full wwPDB X-ray Structure Validation Report ⓘ

Dec 20, 2023 – 12:54 PM EST

PDB ID : 4FA9
Title : Crystal Structure of WT MauG in Complex with Pre-Methylamine Dehydrogenase Aged 30 Days
Authors : Yukl, E.T.; Wilmot, C.M.
Deposited on : 2012-05-21
Resolution : 2.09 Å(reported)

This is a Full wwPDB X-ray Structure Validation Report for a publicly released PDB entry.

We welcome your comments at validation@mail.wwpdb.org

A user guide is available at

<https://www.wwpdb.org/validation/2017/XrayValidationReportHelp>

with specific help available everywhere you see the ⓘ symbol.

The types of validation reports are described at

<http://www.wwpdb.org/validation/2017/FAQs#types>.

The following versions of software and data (see [references ⓘ](#)) were used in the production of this report:

MolProbity : 4.02b-467
Mogul : 1.8.5 (274361), CSD as541be (2020)
Xtriage (Phenix) : 1.13
EDS : 2.36
buster-report : 1.1.7 (2018)
Percentile statistics : 20191225.v01 (using entries in the PDB archive December 25th 2019)
Refmac : 5.8.0158
CCP4 : 7.0.044 (Gargrove)
Ideal geometry (proteins) : Engh & Huber (2001)
Ideal geometry (DNA, RNA) : Parkinson et al. (1996)
Validation Pipeline (wwPDB-VP) : 2.36

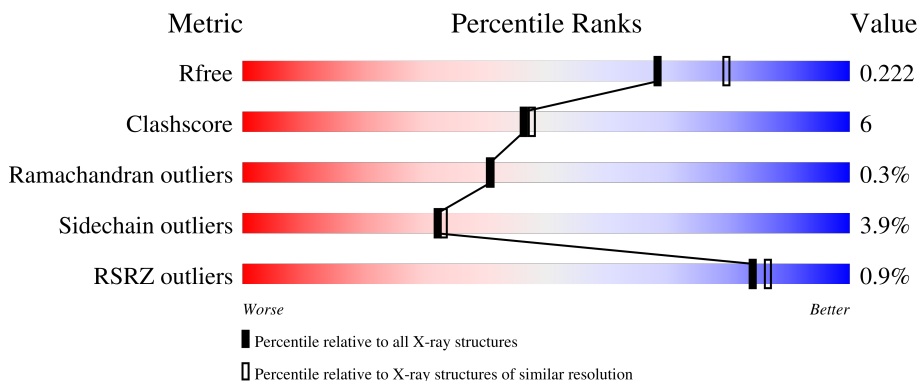
1 Overall quality at a glance i

The following experimental techniques were used to determine the structure:

X-RAY DIFFRACTION

The reported resolution of this entry is 2.09 Å.

Percentile scores (ranging between 0-100) for global validation metrics of the entry are shown in the following graphic. The table shows the number of entries on which the scores are based.




Metric	Whole archive (#Entries)	Similar resolution (#Entries, resolution range(Å))
R_{free}	130704	5197 (2.10-2.10)
Clashscore	141614	5710 (2.10-2.10)
Ramachandran outliers	138981	5647 (2.10-2.10)
Sidechain outliers	138945	5648 (2.10-2.10)
RSRZ outliers	127900	5083 (2.10-2.10)

The table below summarises the geometric issues observed across the polymeric chains and their fit to the electron density. The red, orange, yellow and green segments of the lower bar indicate the fraction of residues that contain outliers for ≥ 3 , 2, 1 and 0 types of geometric quality criteria respectively. A grey segment represents the fraction of residues that are not modelled. The numeric value for each fraction is indicated below the corresponding segment, with a dot representing fractions $\leq 5\%$. The upper red bar (where present) indicates the fraction of residues that have poor fit to the electron density. The numeric value is given above the bar.

Mol	Chain	Length	Quality of chain
1	A	373	<div style="display: flex; align-items: center;"> <div style="width: 20px; height: 10px; background-color: red; margin-right: 5px;"></div> <div style="width: 100%; height: 15px; background: linear-gradient(to right, red 2%, orange 2%, yellow 12%, green 81%, grey 81%);"></div> <div style="margin-left: 5px;"> <p>81% 12% . 5%</p> </div> </div>
1	B	373	<div style="display: flex; align-items: center;"> <div style="width: 20px; height: 10px; background-color: red; margin-right: 5px;"></div> <div style="width: 100%; height: 15px; background: linear-gradient(to right, red 2%, orange 2%, yellow 8%, green 88%, grey 88%);"></div> <div style="margin-left: 5px;"> <p>88% 8% . .</p> </div> </div>
2	C	137	<div style="display: flex; align-items: center;"> <div style="width: 20px; height: 10px; background-color: red; margin-right: 5px;"></div> <div style="width: 100%; height: 15px; background: linear-gradient(to right, red 2%, orange 2%, yellow 15%, green 77%, grey 77%);"></div> <div style="margin-left: 5px;"> <p>77% 15% .. 6%</p> </div> </div>
2	E	137	<div style="display: flex; align-items: center;"> <div style="width: 20px; height: 10px; background-color: red; margin-right: 5px;"></div> <div style="width: 100%; height: 15px; background: linear-gradient(to right, red 2%, orange 2%, yellow 21%, green 69%, grey 69%);"></div> <div style="margin-left: 5px;"> <p>69% 21% . 8%</p> </div> </div>
3	D	385	<div style="display: flex; align-items: center;"> <div style="width: 20px; height: 10px; background-color: red; margin-right: 5px;"></div> <div style="width: 100%; height: 15px; background: linear-gradient(to right, red 2%, orange 2%, yellow 17%, green 79%, grey 79%);"></div> <div style="margin-left: 5px;"> <p>79% 17% . .</p> </div> </div>

Continued on next page...

Continued from previous page...

Mol	Chain	Length	Quality of chain
3	F	385	 85% 12% ..

2 Entry composition

There are 10 unique types of molecules in this entry. The entry contains 14575 atoms, of which 0 are hydrogens and 0 are deuteriums.

In the tables below, the ZeroOcc column contains the number of atoms modelled with zero occupancy, the AltConf column contains the number of residues with at least one atom in alternate conformation and the Trace column contains the number of residues modelled with at most 2 atoms.

- Molecule 1 is a protein called Methylamine utilization protein MauG.

Mol	Chain	Residues	Atoms					ZeroOcc	AltConf	Trace
			Total	C	N	O	S			
1	A	354	Total	C	N	O	S	0	3	0
			2760	1722	496	531	11			
1	B	357	Total	C	N	O	S	0	3	0
			2788	1736	503	538	11			

There are 12 discrepancies between the modelled and reference sequences:

Chain	Residue	Modelled	Actual	Comment	Reference
A	368	HIS	-	expression tag	UNP Q51658
A	369	HIS	-	expression tag	UNP Q51658
A	370	HIS	-	expression tag	UNP Q51658
A	371	HIS	-	expression tag	UNP Q51658
A	372	HIS	-	expression tag	UNP Q51658
A	373	HIS	-	expression tag	UNP Q51658
B	368	HIS	-	expression tag	UNP Q51658
B	369	HIS	-	expression tag	UNP Q51658
B	370	HIS	-	expression tag	UNP Q51658
B	371	HIS	-	expression tag	UNP Q51658
B	372	HIS	-	expression tag	UNP Q51658
B	373	HIS	-	expression tag	UNP Q51658

- Molecule 2 is a protein called Methylamine dehydrogenase light chain.

Mol	Chain	Residues	Atoms					ZeroOcc	AltConf	Trace
			Total	C	N	O	S			
2	C	129	Total	C	N	O	S	0	4	0
			1034	644	178	198	14			
2	E	126	Total	C	N	O	S	0	4	0
			999	621	167	197	14			

There are 12 discrepancies between the modelled and reference sequences:

Chain	Residue	Modelled	Actual	Comment	Reference
C	132	HIS	-	expression tag	UNP P22619
C	133	HIS	-	expression tag	UNP P22619
C	134	HIS	-	expression tag	UNP P22619
C	135	HIS	-	expression tag	UNP P22619
C	136	HIS	-	expression tag	UNP P22619
C	137	HIS	-	expression tag	UNP P22619
E	132	HIS	-	expression tag	UNP P22619
E	133	HIS	-	expression tag	UNP P22619
E	134	HIS	-	expression tag	UNP P22619
E	135	HIS	-	expression tag	UNP P22619
E	136	HIS	-	expression tag	UNP P22619
E	137	HIS	-	expression tag	UNP P22619

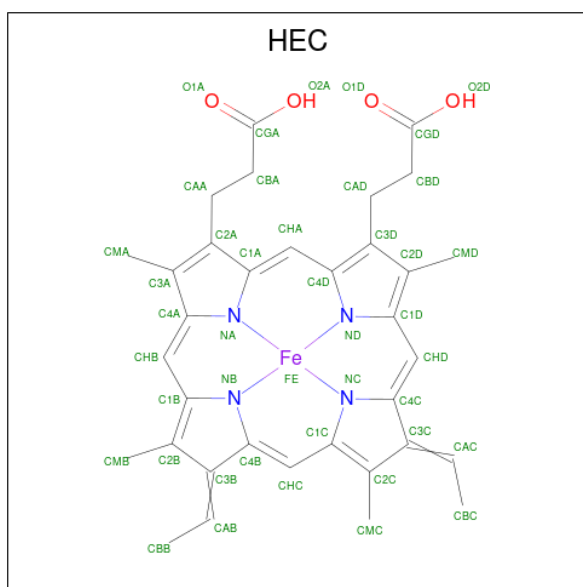
- Molecule 3 is a protein called Methylamine dehydrogenase heavy chain.

Mol	Chain	Residues	Atoms					ZeroOcc	AltConf	Trace
			Total	C	N	O	S			
3	D	376	Total	C	N	O	S	0	3	0
			2954	1870	511	565	8			
3	F	376	Total	C	N	O	S	0	4	0
			2955	1871	509	566	9			

- Molecule 4 is CALCIUM ION (three-letter code: CA) (formula: Ca).

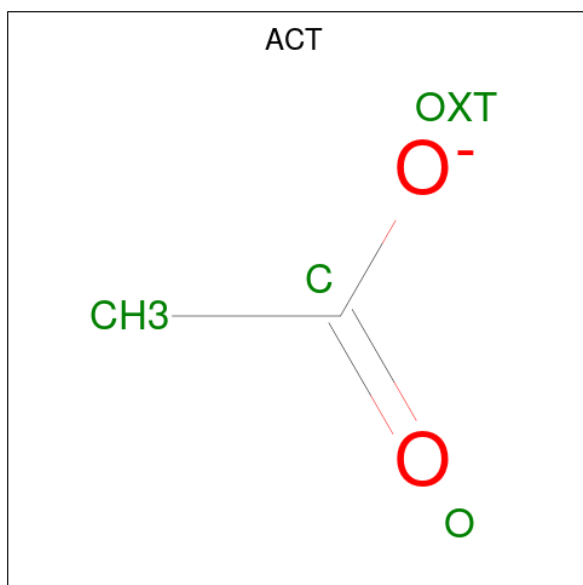
Mol	Chain	Residues	Atoms		ZeroOcc	AltConf
			Total	Ca		
4	A	1	Total	Ca	0	0
			1	1		
4	B	1	Total	Ca	0	0
			1	1		

- Molecule 5 is HEME C (three-letter code: HEC) (formula: C₃₄H₃₄FeN₄O₄).



Mol	Chain	Residues	Atoms				ZeroOcc	AltConf	
			Total	C	Fe	N			O
5	A	1	43	34	1	4	4	0	0
5	A	1	43	34	1	4	4	0	0
5	B	1	43	34	1	4	4	0	0
5	B	1	43	34	1	4	4	0	0

- Molecule 6 is ACETATE ION (three-letter code: ACT) (formula: $C_2H_3O_2$).

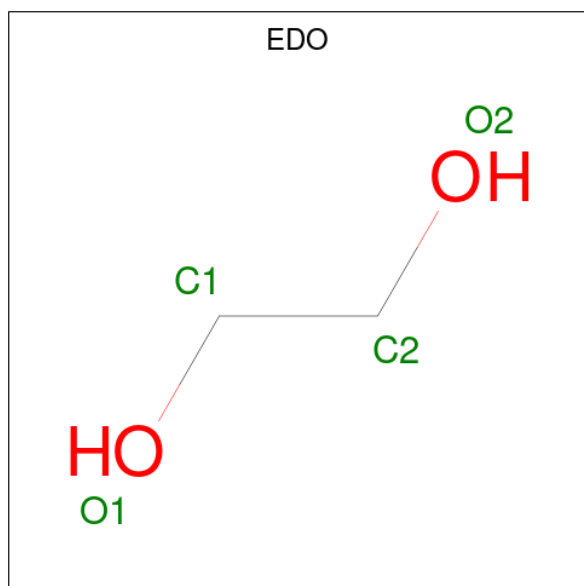


Mol	Chain	Residues	Atoms	ZeroOcc	AltConf
6	A	1	Total C O 4 2 2	0	0
6	A	1	Total C O 4 2 2	0	0
6	B	1	Total C O 4 2 2	0	0
6	D	1	Total C O 4 2 2	0	0
6	F	1	Total C O 4 2 2	0	0

- Molecule 7 is SODIUM ION (three-letter code: NA) (formula: Na).

Mol	Chain	Residues	Atoms	ZeroOcc	AltConf
7	A	2	Total Na 2 2	0	0
7	B	2	Total Na 2 2	0	0

- Molecule 8 is 1,2-ETHANEDIOL (three-letter code: EDO) (formula: C₂H₆O₂).



Mol	Chain	Residues	Atoms	ZeroOcc	AltConf
8	B	1	Total C O 4 2 2	0	0

- Molecule 9 is TRIETHYLENE GLYCOL (three-letter code: PGE) (formula: C₆H₁₄O₄).



Mol	Chain	Residues	Atoms		ZeroOcc	AltConf
9	F	1	Total	C O	0	0
			10	6 4		

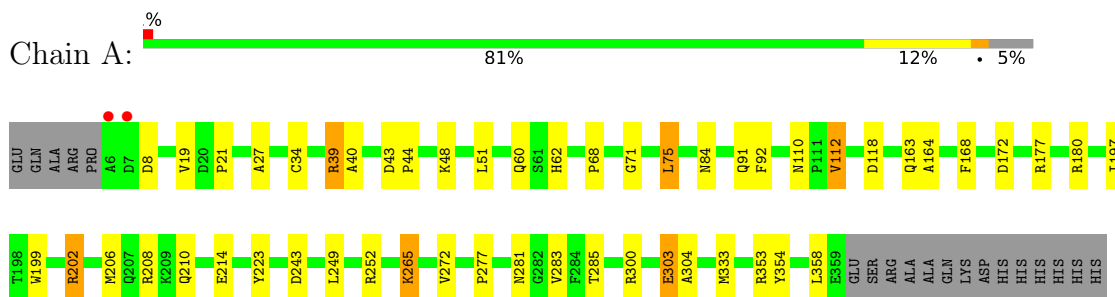
- Molecule 10 is water.

Mol	Chain	Residues	Atoms		ZeroOcc	AltConf
10	A	127	Total	O	0	1
			128	128		
10	B	203	Total	O	0	1
			204	204		
10	C	53	Total	O	0	0
			53	53		
10	D	160	Total	O	0	0
			160	160		
10	E	74	Total	O	0	0
			74	74		
10	F	254	Total	O	0	0
			254	254		

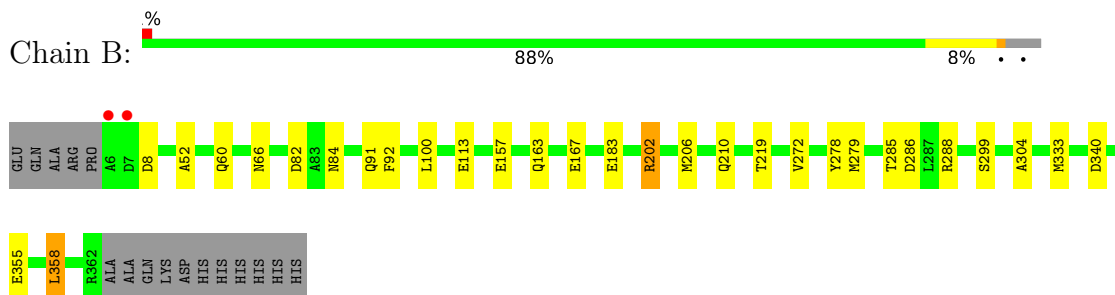
3 Residue-property plots [i](#)

These plots are drawn for all protein, RNA, DNA and oligosaccharide chains in the entry. The first graphic for a chain summarises the proportions of the various outlier classes displayed in the second graphic. The second graphic shows the sequence view annotated by issues in geometry and electron density. Residues are color-coded according to the number of geometric quality criteria for which they contain at least one outlier: green = 0, yellow = 1, orange = 2 and red = 3 or more. A red dot above a residue indicates a poor fit to the electron density ($RSRZ > 2$). Stretches of 2 or more consecutive residues without any outlier are shown as a green connector. Residues present in the sample, but not in the model, are shown in grey.

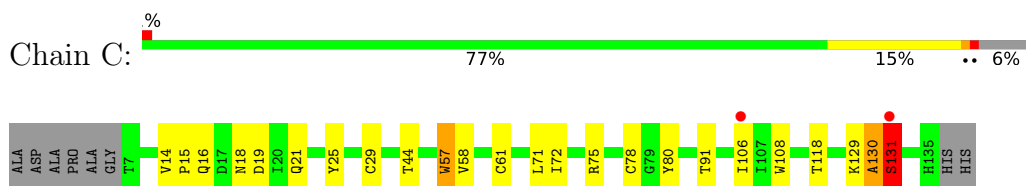
- Molecule 1: Methylamine utilization protein MauG



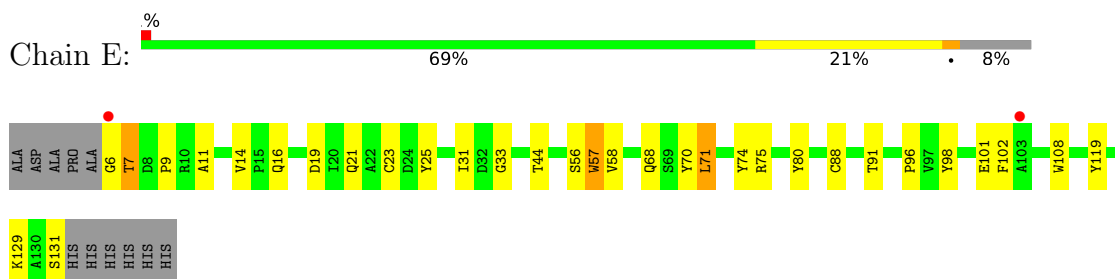
- Molecule 1: Methylamine utilization protein MauG



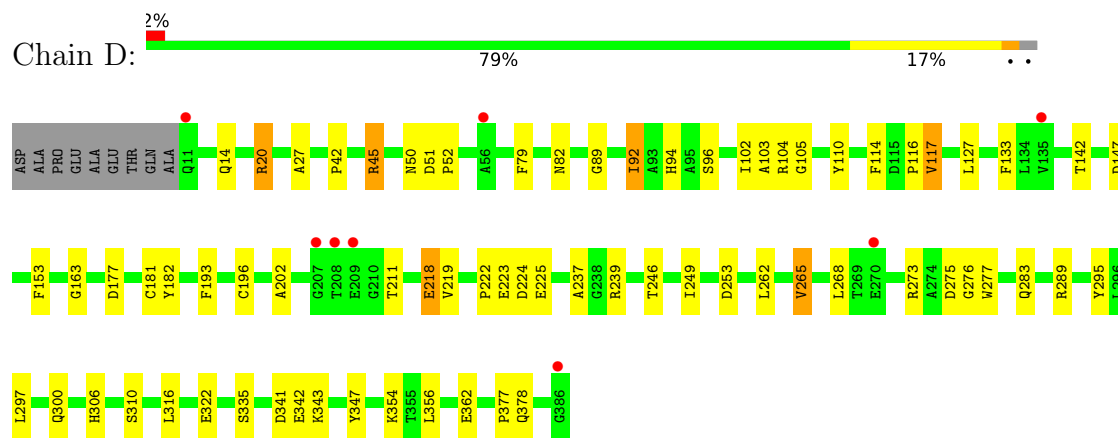
- Molecule 2: Methylamine dehydrogenase light chain



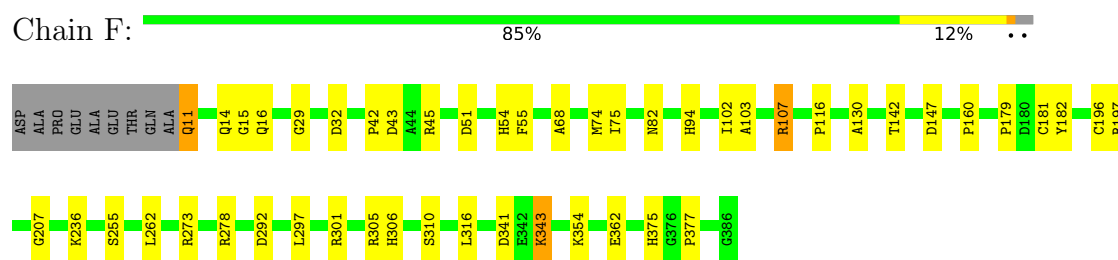
- Molecule 2: Methylamine dehydrogenase light chain



- Molecule 3: Methylamine dehydrogenase heavy chain



- Molecule 3: Methylamine dehydrogenase heavy chain



4 Data and refinement statistics

Property	Value	Source
Space group	P 1	Depositor
Cell constants a, b, c, α , β , γ	55.53Å 83.54Å 107.78Å 109.94° 91.54° 105.78°	Depositor
Resolution (Å)	44.49 – 2.09 44.49 – 2.09	Depositor EDS
% Data completeness (in resolution range)	97.6 (44.49-2.09) 97.6 (44.49-2.09)	Depositor EDS
R_{merge}	0.08	Depositor
R_{sym}	(Not available)	Depositor
$\langle I/\sigma(I) \rangle$ ¹	2.49 (at 2.08Å)	Xtrriage
Refinement program	REFMAC 5.5.0109	Depositor
R, R_{free}	0.157 , 0.214 0.166 , 0.222	Depositor DCC
R_{free} test set	5057 reflections (5.04%)	wwPDB-VP
Wilson B-factor (Å ²)	34.8	Xtrriage
Anisotropy	0.049	Xtrriage
Bulk solvent k_{sol} (e/Å ³), B_{sol} (Å ²)	0.32 , 37.0	EDS
L-test for twinning ²	$\langle L \rangle = 0.50$, $\langle L^2 \rangle = 0.33$	Xtrriage
Estimated twinning fraction	No twinning to report.	Xtrriage
F_o, F_c correlation	0.97	EDS
Total number of atoms	14575	wwPDB-VP
Average B, all atoms (Å ²)	39.0	wwPDB-VP

Xtrriage's analysis on translational NCS is as follows: *The largest off-origin peak in the Patterson function is 4.73% of the height of the origin peak. No significant pseudotranslation is detected.*

¹Intensities estimated from amplitudes.

²Theoretical values of $\langle |L| \rangle$, $\langle L^2 \rangle$ for acentric reflections are 0.5, 0.333 respectively for untwinned datasets, and 0.375, 0.2 for perfectly twinned datasets.

5 Model quality i

5.1 Standard geometry i

Bond lengths and bond angles in the following residue types are not validated in this section: ACT, EDO, PGE, NA, 0AF, HEC, CA

The Z score for a bond length (or angle) is the number of standard deviations the observed value is removed from the expected value. A bond length (or angle) with $|Z| > 5$ is considered an outlier worth inspection. RMSZ is the root-mean-square of all Z scores of the bond lengths (or angles).

Mol	Chain	Bond lengths		Bond angles	
		RMSZ	# Z >5	RMSZ	# Z >5
1	A	0.97	2/2827 (0.1%)	0.91	5/3835 (0.1%)
1	B	1.08	0/2852	0.90	0/3868
2	C	0.92	0/1037	0.90	0/1417
2	E	1.11	2/998 (0.2%)	1.01	0/1363
3	D	0.95	3/3031 (0.1%)	0.89	1/4128 (0.0%)
3	F	1.12	3/3035 (0.1%)	0.99	8/4134 (0.2%)
All	All	1.03	10/13780 (0.1%)	0.93	14/18745 (0.1%)

All (10) bond length outliers are listed below:

Mol	Chain	Res	Type	Atoms	Z	Observed(Å)	Ideal(Å)
2	E	70	TYR	CD2-CE2	5.70	1.48	1.39
3	F	103	ALA	CA-CB	5.67	1.64	1.52
3	D	103	ALA	CA-CB	5.64	1.64	1.52
2	E	14	VAL	CB-CG1	5.58	1.64	1.52
3	D	79	PHE	CE2-CZ	5.58	1.48	1.37
3	F	68	ALA	CA-CB	5.37	1.63	1.52
1	A	164	ALA	CA-CB	5.20	1.63	1.52
3	D	27	ALA	CA-CB	5.10	1.63	1.52
1	A	34	CYS	CB-SG	-5.07	1.73	1.81
3	F	362	GLU	CG-CD	5.06	1.59	1.51

All (14) bond angle outliers are listed below:

Mol	Chain	Res	Type	Atoms	Z	Observed(°)	Ideal(°)
1	A	39	ARG	NE-CZ-NH2	-6.30	117.15	120.30
1	A	252	ARG	NE-CZ-NH2	-5.84	117.38	120.30
1	A	75	LEU	CA-CB-CG	-5.82	101.92	115.30
1	A	180	ARG	NE-CZ-NH1	5.55	123.07	120.30
3	F	273	ARG	NE-CZ-NH1	-5.42	117.59	120.30

Continued on next page...

Continued from previous page...

Mol	Chain	Res	Type	Atoms	Z	Observed(°)	Ideal(°)
3	F	197	ARG	NE-CZ-NH2	5.39	122.99	120.30
3	F	292	ASP	CB-CG-OD1	5.35	123.11	118.30
3	F	341	ASP	CB-CG-OD1	5.26	123.04	118.30
3	F	107	ARG	NE-CZ-NH2	-5.23	117.69	120.30
3	F	197	ARG	NE-CZ-NH1	-5.22	117.69	120.30
1	A	265	LYS	CD-CE-NZ	5.17	123.60	111.70
3	F	278	ARG	NE-CZ-NH2	-5.10	117.75	120.30
3	D	147	ASP	CB-CG-OD1	5.08	122.87	118.30
3	F	43	ASP	CB-CG-OD1	5.08	122.87	118.30

There are no chirality outliers.

There are no planarity outliers.

5.2 Too-close contacts

In the following table, the Non-H and H(model) columns list the number of non-hydrogen atoms and hydrogen atoms in the chain respectively. The H(added) column lists the number of hydrogen atoms added and optimized by MolProbity. The Clashes column lists the number of clashes within the asymmetric unit, whereas Symm-Clashes lists symmetry-related clashes.

Mol	Chain	Non-H	H(model)	H(added)	Clashes	Symm-Clashes
1	A	2760	0	2632	34	0
1	B	2788	0	2653	16	0
2	C	1034	0	917	36	0
2	E	999	0	887	27	0
3	D	2954	0	2837	42	0
3	F	2955	0	2837	32	0
4	A	1	0	0	0	0
4	B	1	0	0	0	0
5	A	86	0	60	4	0
5	B	86	0	60	3	0
6	A	8	0	6	0	0
6	B	4	0	3	0	0
6	D	4	0	3	0	0
6	F	4	0	3	0	0
7	A	2	0	0	0	0
7	B	2	0	0	0	0
8	B	4	0	6	0	0
9	F	10	0	14	1	0
10	A	128	0	0	2	0
10	B	204	0	0	0	0

Continued on next page...

Continued from previous page...

Mol	Chain	Non-H	H(model)	H(added)	Clashes	Symm-Clashes
10	C	53	0	0	2	0
10	D	160	0	0	5	0
10	E	74	0	0	3	0
10	F	254	0	0	4	0
All	All	14575	0	12918	167	0

The all-atom clashscore is defined as the number of clashes found per 1000 atoms (including hydrogen atoms). The all-atom clashscore for this structure is 6.

All (167) close contacts within the same asymmetric unit are listed below, sorted by their clash magnitude.

Atom-1	Atom-2	Interatomic distance (Å)	Clash overlap (Å)
2:C:130:ALA:CA	2:C:131:SER:HB2	1.70	1.22
2:C:130:ALA:HA	2:C:131:SER:HB2	1.22	1.20
2:E:6:GLY:O	2:E:7:THR:HG23	1.46	1.13
2:E:6:GLY:O	2:E:7:THR:CG2	2.03	1.05
2:C:130:ALA:CB	2:C:131:SER:HB2	1.91	1.00
2:C:131:SER:HB3	10:C:243:HOH:O	1.67	0.94
2:C:130:ALA:HB1	2:C:131:SER:CB	1.99	0.92
1:B:82:ASP:OD1	1:B:84:ASN:HB2	1.68	0.91
2:C:57[B]:0AF:HBC1	2:C:108[B]:TRP:NE1	1.88	0.88
1:B:285:THR:HG22	1:B:286:ASP:OD1	1.77	0.84
1:A:197:ILE:O	1:A:202[B]:ARG:HD2	1.78	0.84
2:E:57[B]:0AF:HBC1	2:E:108[B]:TRP:NE1	1.96	0.79
2:C:130:ALA:CB	2:C:131:SER:CB	2.60	0.79
3:D:342:GLU:HA	10:D:612:HOH:O	1.81	0.79
2:E:6:GLY:C	2:E:7:THR:CG2	2.50	0.78
1:A:210:GLN:HE22	2:C:44:THR:HG21	1.49	0.78
2:E:57[A]:0AF:CE3	2:E:108[A]:TRP:CD1	2.67	0.78
2:C:130:ALA:HB1	2:C:131:SER:HB3	1.64	0.78
3:F:11:GLN:HA	3:F:11:GLN:OE1	1.83	0.77
3:F:207:GLY:HA3	10:F:745:HOH:O	1.85	0.77
2:C:57[A]:0AF:CE3	2:C:108[A]:TRP:CD1	2.69	0.76
2:E:6:GLY:C	2:E:7:THR:HG22	2.06	0.75
3:F:181[B]:CYS:HB3	3:F:196:CYS:SG	2.26	0.74
1:A:206:MET:HA	1:A:206:MET:HE2	1.71	0.73
2:C:130:ALA:HA	2:C:131:SER:CB	2.13	0.72
1:A:48:LYS:H	1:A:62:HIS:HE1	1.36	0.72
2:C:129:LYS:O	2:C:130:ALA:HB3	1.90	0.70
2:E:57[B]:0AF:HBC1	2:E:108[B]:TRP:HE1	1.57	0.69
2:E:6:GLY:O	2:E:7:THR:HG22	1.93	0.68

Continued on next page...

Continued from previous page...

Atom-1	Atom-2	Interatomic distance (Å)	Clash overlap (Å)
1:A:197:ILE:CD1	2:C:71:LEU:HD23	2.25	0.67
2:C:129:LYS:O	2:C:130:ALA:CB	2.44	0.66
2:E:101[A]:GLU:HA	10:E:260:HOH:O	1.96	0.65
3:D:362:GLU:HA	3:D:362:GLU:OE1	1.97	0.64
2:E:131:SER:HA	10:E:235:HOH:O	1.98	0.64
2:C:57[A]:0AF:HE3	2:C:108[A]:TRP:CD1	2.33	0.64
2:E:11:ALA:O	3:F:305[B]:ARG:HD2	1.99	0.64
1:B:210:GLN:HE22	2:E:44:THR:HG21	1.62	0.63
3:F:343:LYS:N	3:F:343:LYS:HD3	2.13	0.62
1:A:48:LYS:H	1:A:62:HIS:CE1	2.19	0.61
3:D:42:PRO:HD3	3:D:117:VAL:HG12	1.83	0.60
2:C:57[B]:0AF:HBC1	2:C:108[B]:TRP:HE1	1.63	0.59
3:F:51:ASP:HA	3:F:377:PRO:HA	1.85	0.59
1:A:208:ARG:NH2	3:F:29:GLY:O	2.37	0.58
3:D:45:ARG:NH2	3:D:343:LYS:O	2.37	0.57
1:A:110:ASN:OD1	1:A:112:VAL:HG13	2.04	0.57
1:B:299:SER:HB3	1:B:304:ALA:CB	2.34	0.57
3:D:275:ASP:HB2	10:D:625:HOH:O	2.06	0.56
1:A:197:ILE:HD12	2:C:71:LEU:HD23	1.88	0.56
1:A:21:PRO:O	1:A:27:ALA:HA	2.06	0.56
1:A:60:GLN:O	1:A:62:HIS:HD2	1.88	0.56
3:D:347:TYR:HB3	3:D:356:LEU:HD11	1.88	0.55
3:D:341:ASP:OD1	3:D:341:ASP:N	2.31	0.54
2:E:57[A]:0AF:HE3	2:E:108[A]:TRP:CD1	2.43	0.54
3:D:51:ASP:HA	3:D:377:PRO:HA	1.89	0.54
2:C:61:CYS:HB2	2:C:72[B]:ILE:HD12	1.90	0.54
3:D:237:ALA:HB2	3:D:289:ARG:HG3	1.90	0.54
3:F:297:LEU:HD22	3:F:310:SER:HB2	1.90	0.53
3:D:20[A]:ARG:NH1	10:D:633:HOH:O	2.42	0.53
3:F:82:ASN:HB3	3:F:142:THR:HB	1.90	0.53
3:D:42:PRO:HG3	3:D:116:PRO:HB2	1.91	0.52
2:C:21:GLN:HE22	3:F:14[A]:GLN:HE21	1.58	0.52
3:D:268:LEU:HD22	3:D:277:TRP:HB3	1.92	0.52
5:A:403:HEC:HMC1	5:A:403:HEC:HBC3	1.92	0.51
2:E:56:SER:CB	2:E:74:TYR:O	2.58	0.51
3:D:52:PRO:HG2	3:D:378:GLN:OE1	2.11	0.51
3:D:92:ILE:HG12	3:D:114:PHE:HB2	1.93	0.50
3:F:343:LYS:HD3	3:F:343:LYS:H	1.76	0.50
3:D:239[B]:ARG:HH11	3:D:239[B]:ARG:HA	1.77	0.50
1:A:110:ASN:OD1	1:A:112:VAL:CG1	2.60	0.50
2:C:106:ILE:HG12	3:D:133:PHE:CZ	2.47	0.50

Continued on next page...

Continued from previous page...

Atom-1	Atom-2	Interatomic distance (Å)	Clash overlap (Å)
2:C:91:THR:HB	3:D:306:HIS:CE1	2.46	0.50
3:D:14:GLN:HE21	2:E:21:GLN:HE22	1.59	0.50
1:B:355:GLU:O	1:B:358:LEU:HB2	2.12	0.49
1:A:210:GLN:NE2	2:C:44:THR:HG21	2.24	0.49
1:B:91:GLN:O	1:B:92:PHE:HB2	2.11	0.49
3:D:20[A]:ARG:HA	3:D:20[A]:ARG:NE	2.28	0.49
3:F:45:ARG:NH2	3:F:343:LYS:O	2.45	0.49
2:C:75:ARG:HA	10:C:247:HOH:O	2.12	0.49
1:A:223:TYR:CE2	1:A:265:LYS:HB2	2.47	0.49
3:D:193:PHE:HA	3:D:202:ALA:O	2.12	0.49
3:D:50:ASN:HB3	10:D:605:HOH:O	2.11	0.49
2:C:21:GLN:HE22	3:F:14[A]:GLN:NE2	2.10	0.48
1:A:197:ILE:HD11	2:C:71:LEU:HD23	1.95	0.48
1:A:353:ARG:HH11	1:A:353:ARG:HG2	1.79	0.48
1:B:288:ARG:NH1	1:B:340:ASP:OD1	2.44	0.48
2:E:19:ASP:O	2:E:25:TYR:HB2	2.14	0.47
1:A:40:ALA:HA	1:A:354:TYR:CZ	2.49	0.47
2:E:23:CYS:SG	2:E:88[B]:CYS:HB2	2.54	0.47
2:E:101[B]:GLU:HG2	2:E:102:PHE:CD2	2.49	0.47
3:F:42:PRO:HG3	3:F:116:PRO:HB2	1.97	0.47
3:D:297:LEU:HD22	3:D:310:SER:HB2	1.95	0.47
3:F:305[B]:ARG:NH1	10:F:727:HOH:O	2.42	0.47
2:C:57[B]:OAF:HBC1	2:C:108[B]:TRP:CE2	2.49	0.47
3:D:277:TRP:CE2	3:D:300:GLN:HG3	2.49	0.47
3:F:107:ARG:HD3	3:F:130:ALA:HB1	1.96	0.47
1:A:272:VAL:HG21	5:A:403:HEC:HMA3	1.97	0.47
1:B:113:GLU:HG2	5:B:402:HEC:HBC2	1.96	0.47
3:D:222:PRO:HG2	3:D:225:GLU:HB2	1.95	0.47
1:A:71:GLY:HA2	1:A:168:PHE:O	2.15	0.47
1:B:52:ALA:O	1:B:66:ASN:HA	2.15	0.47
1:B:272:VAL:HG21	5:B:403:HEC:HMA3	1.96	0.47
3:D:239[B]:ARG:NH1	3:D:253:ASP:OD1	2.48	0.47
1:A:277:PRO:HB3	1:A:285:THR:HA	1.96	0.46
3:D:96:SER:HB3	3:D:110:TYR:CZ	2.50	0.46
2:E:33:GLY:HA3	2:E:119:TYR:OH	2.15	0.46
2:E:96:PRO:HB2	2:E:98:TYR:CE1	2.51	0.46
1:A:91:GLN:O	1:A:92:PHE:HB2	2.15	0.46
3:F:54:HIS:HE1	10:F:717:HOH:O	1.98	0.46
1:B:299:SER:HB2	1:B:333:MET:HG3	1.98	0.46
1:B:278:TYR:O	1:B:279:MET:HB2	2.16	0.46
3:D:249:ILE:HB	3:D:265:VAL:HG12	1.98	0.45

Continued on next page...

Continued from previous page...

Atom-1	Atom-2	Interatomic distance (Å)	Clash overlap (Å)
2:E:71:LEU:CD2	2:E:129:LYS:O	2.64	0.45
1:A:172:ASP:O	1:A:177:ARG:NH1	2.50	0.45
1:A:281:ASN:OD1	1:A:283:VAL:HG12	2.17	0.45
2:C:106:ILE:HG12	3:D:133:PHE:HZ	1.81	0.45
3:D:283:GLN:HB2	3:D:335:SER:HB3	1.99	0.44
3:D:283:GLN:HB2	3:D:335:SER:CB	2.48	0.44
3:D:246:THR:O	3:D:273:ARG:HD3	2.18	0.44
3:F:305[A]:ARG:HA	3:F:305[A]:ARG:HD2	1.76	0.44
1:A:19:VAL:HG13	10:A:530:HOH:O	2.16	0.44
2:C:19:ASP:OD1	3:F:15:GLY:HA3	2.16	0.44
2:C:78:CYS:HA	2:C:118:THR:O	2.18	0.44
3:F:255:SER:HA	9:F:402:PGE:H62	1.98	0.44
3:D:253:ASP:HB2	3:D:262:LEU:CD1	2.48	0.44
1:A:197:ILE:HA	1:A:202[A]:ARG:HB3	2.00	0.43
3:D:82:ASN:HB3	3:D:142:THR:HB	2.00	0.43
2:C:57[B]:0AF:CB	2:C:108[B]:TRP:NE1	2.73	0.43
3:D:239[B]:ARG:HH11	3:D:239[B]:ARG:CA	2.32	0.43
3:F:179:PRO:HD2	3:F:181[B]:CYS:SG	2.57	0.43
3:F:236:LYS:NZ	10:F:720:HOH:O	2.51	0.43
2:E:31:ILE:HD13	2:E:31:ILE:HG21	1.68	0.43
1:A:208:ARG:HH22	3:F:29:GLY:C	2.22	0.43
1:A:223:TYR:CG	1:A:249:LEU:HD22	2.53	0.43
2:E:9:PRO:O	3:F:305[B]:ARG:HD3	2.18	0.43
3:F:147:ASP:OD1	3:F:147:ASP:C	2.57	0.43
2:C:58:VAL:HA	2:C:72[A]:ILE:O	2.18	0.43
2:C:80:TYR:HE2	3:F:74:MET:O	2.02	0.42
1:A:163:GLN:HE22	5:A:402:HEC:HMA1	1.83	0.42
1:B:163:GLN:HE22	5:B:402:HEC:HMA1	1.84	0.42
3:D:181:CYS:HA	3:D:196:CYS:HA	2.01	0.42
1:B:210:GLN:NE2	2:E:44:THR:HG21	2.32	0.42
1:A:48:LYS:HD2	1:A:62:HIS:NE2	2.35	0.42
1:B:100:LEU:HD23	1:B:100:LEU:HA	1.83	0.42
3:D:181:CYS:C	3:D:182:TYR:CD1	2.93	0.42
1:A:303[B]:GLU:CD	1:A:303[B]:GLU:H	2.22	0.42
1:A:68:PRO:HG2	5:A:402:HEC:HBA1	2.02	0.41
2:E:75:ARG:HD2	10:E:261:HOH:O	2.18	0.41
3:D:218[A]:GLU:HG3	3:D:219:VAL:O	2.20	0.41
3:D:295:TYR:CD1	3:D:295:TYR:N	2.88	0.41
2:C:18:ASN:O	3:F:16:GLN:HA	2.20	0.41
3:D:104:ARG:CG	3:D:105:GLY:N	2.83	0.41
1:A:43:ASP:HA	1:A:44:PRO:HD2	1.82	0.41

Continued on next page...

Continued from previous page...

Atom-1	Atom-2	Interatomic distance (Å)	Clash overlap (Å)
2:C:57[A]:0AF:HE3	2:C:108[A]:TRP:CG	2.55	0.41
1:B:202:ARG:HB2	1:B:206:MET:HG3	2.03	0.41
1:A:199:TRP:HH2	1:A:333:MET:O	2.03	0.41
2:C:19:ASP:O	2:C:25:TYR:HB2	2.20	0.41
2:E:56:SER:HB2	2:E:74:TYR:O	2.21	0.41
3:F:181[B]:CYS:HB3	3:F:196:CYS:HA	2.02	0.41
3:F:354:LYS:HE3	3:F:375:HIS:O	2.21	0.41
2:C:14:VAL:HA	2:C:15:PRO:HD2	1.81	0.41
3:D:153:PHE:CZ	3:D:163:GLY:HA3	2.55	0.41
1:A:304:ALA:HA	10:A:532:HOH:O	2.21	0.40
3:D:89:GLY:HA2	10:D:592:HOH:O	2.21	0.40
3:D:276:GLY:O	3:D:300:GLN:HA	2.21	0.40
2:E:91:THR:HB	3:F:306:HIS:CE1	2.56	0.40
3:F:54:HIS:O	3:F:55:PHE:HB2	2.22	0.40

There are no symmetry-related clashes.

5.3 Torsion angles [i](#)

5.3.1 Protein backbone [i](#)

In the following table, the Percentiles column shows the percent Ramachandran outliers of the chain as a percentile score with respect to all X-ray entries followed by that with respect to entries of similar resolution.

The Analysed column shows the number of residues for which the backbone conformation was analysed, and the total number of residues.

Mol	Chain	Analysed	Favoured	Allowed	Outliers	Percentiles	
1	A	355/373 (95%)	346 (98%)	9 (2%)	0	100	100
1	B	358/373 (96%)	350 (98%)	8 (2%)	0	100	100
2	C	129/137 (94%)	124 (96%)	3 (2%)	2 (2%)	9	5
2	E	126/137 (92%)	120 (95%)	6 (5%)	0	100	100
3	D	377/385 (98%)	361 (96%)	15 (4%)	1 (0%)	41	41
3	F	378/385 (98%)	362 (96%)	14 (4%)	2 (0%)	29	26
All	All	1723/1790 (96%)	1663 (96%)	55 (3%)	5 (0%)	41	41

All (5) Ramachandran outliers are listed below:

Mol	Chain	Res	Type
2	C	131	SER
3	F	32	ASP
2	C	130	ALA
3	F	102	ILE
3	D	102	ILE

5.3.2 Protein sidechains [i](#)

In the following table, the Percentiles column shows the percent sidechain outliers of the chain as a percentile score with respect to all X-ray entries followed by that with respect to entries of similar resolution.

The Analysed column shows the number of residues for which the sidechain conformation was analysed, and the total number of residues.

Mol	Chain	Analysed	Rotameric	Outliers	Percentiles	
1	A	279/292 (96%)	264 (95%)	15 (5%)	22	20
1	B	282/292 (97%)	273 (97%)	9 (3%)	39	41
2	C	111/112 (99%)	108 (97%)	3 (3%)	44	48
2	E	107/112 (96%)	101 (94%)	6 (6%)	21	18
3	D	307/310 (99%)	290 (94%)	17 (6%)	21	19
3	F	308/310 (99%)	300 (97%)	8 (3%)	46	50
All	All	1394/1428 (98%)	1336 (96%)	58 (4%)	32	30

All (58) residues with a non-rotameric sidechain are listed below:

Mol	Chain	Res	Type
1	A	8	ASP
1	A	39	ARG
1	A	51	LEU
1	A	75	LEU
1	A	84	ASN
1	A	112	VAL
1	A	118	ASP
1	A	202[A]	ARG
1	A	202[B]	ARG
1	A	214	GLU
1	A	243	ASP
1	A	300	ARG
1	A	303[A]	GLU
1	A	303[B]	GLU

Continued on next page...

Continued from previous page...

Mol	Chain	Res	Type
1	A	358	LEU
1	B	8[A]	ASP
1	B	8[B]	ASP
1	B	60	GLN
1	B	157	GLU
1	B	167	GLU
1	B	183	GLU
1	B	202	ARG
1	B	219	THR
1	B	358	LEU
2	C	16	GLN
2	C	29	CYS
2	C	131	SER
3	D	20[A]	ARG
3	D	20[B]	ARG
3	D	45	ARG
3	D	92	ILE
3	D	94	HIS
3	D	117	VAL
3	D	127	LEU
3	D	177	ASP
3	D	211	THR
3	D	218[A]	GLU
3	D	218[B]	GLU
3	D	223	GLU
3	D	224	ASP
3	D	265	VAL
3	D	316	LEU
3	D	322	GLU
3	D	354	LYS
2	E	7	THR
2	E	16	GLN
2	E	58	VAL
2	E	68	GLN
2	E	71	LEU
2	E	80	TYR
3	F	11	GLN
3	F	75	ILE
3	F	94	HIS
3	F	160	PRO
3	F	262	LEU
3	F	301	ARG

Continued on next page...

Continued from previous page...

Mol	Chain	Res	Type
3	F	316	LEU
3	F	343	LYS

Sometimes sidechains can be flipped to improve hydrogen bonding and reduce clashes. All (16) such sidechains are listed below:

Mol	Chain	Res	Type
1	A	29	GLN
1	A	60	GLN
1	A	62	HIS
1	A	91	GLN
1	A	163	GLN
1	B	16	GLN
1	B	29	GLN
1	B	91	GLN
1	B	163	GLN
1	B	210	GLN
2	C	21	GLN
3	D	14	GLN
3	D	30	GLN
2	E	68	GLN
3	F	30	GLN
3	F	54	HIS

5.3.3 RNA [i](#)

There are no RNA molecules in this entry.

5.4 Non-standard residues in protein, DNA, RNA chains [i](#)

4 non-standard protein/DNA/RNA residues are modelled in this entry.

In the following table, the Counts columns list the number of bonds (or angles) for which Mogul statistics could be retrieved, the number of bonds (or angles) that are observed in the model and the number of bonds (or angles) that are defined in the Chemical Component Dictionary. The Link column lists molecule types, if any, to which the group is linked. The Z score for a bond length (or angle) is the number of standard deviations the observed value is removed from the expected value. A bond length (or angle) with $|Z| > 2$ is considered an outlier worth inspection. RMSZ is the root-mean-square of all Z scores of the bond lengths (or angles).

Mol	Type	Chain	Res	Link	Bond lengths			Bond angles		
					Counts	RMSZ	# Z > 2	Counts	RMSZ	# Z > 2
2	0AF	E	57[A]	2	13,16,17	1.24	1 (7%)	11,22,24	1.63	3 (27%)
2	0AF	E	57[B]	2	13,16,17	1.95	3 (23%)	11,22,24	2.90	5 (45%)
2	0AF	C	57[A]	2	13,16,17	1.05	0	11,22,24	1.31	2 (18%)
2	0AF	C	57[B]	2	13,16,17	1.56	4 (30%)	11,22,24	2.99	5 (45%)

In the following table, the Chirals column lists the number of chiral outliers, the number of chiral centers analysed, the number of these observed in the model and the number defined in the Chemical Component Dictionary. Similar counts are reported in the Torsion and Rings columns. '-' means no outliers of that kind were identified.

Mol	Type	Chain	Res	Link	Chirals	Torsions	Rings
2	0AF	E	57[A]	2	-	0/4/6/8	0/2/2/2
2	0AF	E	57[B]	2	-	0/4/6/8	0/2/2/2
2	0AF	C	57[A]	2	-	0/4/6/8	0/2/2/2
2	0AF	C	57[B]	2	-	0/4/6/8	0/2/2/2

All (8) bond length outliers are listed below:

Mol	Chain	Res	Type	Atoms	Z	Observed(Å)	Ideal(Å)
2	E	57[B]	0AF	CZ2-CE2	-4.74	1.35	1.42
2	E	57[B]	0AF	CD1-NE1	-3.42	1.29	1.36
2	C	57[B]	0AF	CZ2-CE2	-3.18	1.37	1.42
2	C	57[B]	0AF	CD1-NE1	-2.69	1.31	1.36
2	E	57[B]	0AF	CE2-NE1	-2.66	1.30	1.39
2	E	57[A]	0AF	CZ2-CE2	-2.53	1.38	1.42
2	C	57[B]	0AF	CE2-NE1	-2.45	1.30	1.39
2	C	57[B]	0AF	CA-N	-2.13	1.41	1.48

All (15) bond angle outliers are listed below:

Mol	Chain	Res	Type	Atoms	Z	Observed(°)	Ideal(°)
2	C	57[B]	0AF	CB-CA-C	6.81	124.23	111.47
2	E	57[B]	0AF	CB-CA-C	5.53	121.83	111.47
2	E	57[B]	0AF	CB-CG-CD1	-5.26	121.47	127.97
2	C	57[B]	0AF	CB-CG-CD1	-5.14	121.62	127.97
2	E	57[A]	0AF	CB-CG-CD1	-3.46	123.70	127.97
2	E	57[B]	0AF	CG-CB-CA	-3.18	109.61	114.53
2	E	57[B]	0AF	CB-CG-CD2	3.16	131.16	126.25
2	C	57[B]	0AF	CB-CG-CD2	3.12	131.10	126.25
2	C	57[B]	0AF	CG-CB-CA	-3.09	109.75	114.53
2	E	57[B]	0AF	CZ3-CE3-CD2	-2.60	117.29	120.89

Continued on next page...

Continued from previous page...

Mol	Chain	Res	Type	Atoms	Z	Observed(°)	Ideal(°)
2	C	57[A]	0AF	CB-CA-C	2.45	116.05	111.47
2	C	57[A]	0AF	CB-CG-CD1	-2.26	125.17	127.97
2	E	57[A]	0AF	CB-CG-CD2	2.21	129.68	126.25
2	C	57[B]	0AF	CZ3-CE3-CD2	-2.01	118.10	120.89
2	E	57[A]	0AF	O1-CZ2-CE2	-2.00	114.51	119.31

There are no chirality outliers.

There are no torsion outliers.

There are no ring outliers.

4 monomers are involved in 11 short contacts:

Mol	Chain	Res	Type	Clashes	Symm-Clashes
2	E	57[A]	0AF	2	0
2	E	57[B]	0AF	2	0
2	C	57[A]	0AF	3	0
2	C	57[B]	0AF	4	0

5.5 Carbohydrates [i](#)

There are no monosaccharides in this entry.

5.6 Ligand geometry [i](#)

Of 17 ligands modelled in this entry, 6 are monoatomic - leaving 11 for Mogul analysis.

In the following table, the Counts columns list the number of bonds (or angles) for which Mogul statistics could be retrieved, the number of bonds (or angles) that are observed in the model and the number of bonds (or angles) that are defined in the Chemical Component Dictionary. The Link column lists molecule types, if any, to which the group is linked. The Z score for a bond length (or angle) is the number of standard deviations the observed value is removed from the expected value. A bond length (or angle) with $|Z| > 2$ is considered an outlier worth inspection. RMSZ is the root-mean-square of all Z scores of the bond lengths (or angles).

Mol	Type	Chain	Res	Link	Bond lengths			Bond angles		
					Counts	RMSZ	$\# Z > 2$	Counts	RMSZ	$\# Z > 2$
9	PGE	F	402	-	9,9,9	0.51	0	8,8,8	0.41	0
5	HEC	B	403	1	32,50,50	1.45	4 (12%)	24,82,82	3.00	13 (54%)
6	ACT	A	404	-	3,3,3	0.82	0	3,3,3	1.56	1 (33%)
6	ACT	B	404	-	3,3,3	0.92	0	3,3,3	1.79	1 (33%)
5	HEC	A	402	1,10	32,50,50	1.72	9 (28%)	24,82,82	2.89	14 (58%)

Mol	Type	Chain	Res	Link	Bond lengths			Bond angles		
					Counts	RMSZ	# Z > 2	Counts	RMSZ	# Z > 2
6	ACT	F	401	-	3,3,3	0.68	0	3,3,3	1.89	1 (33%)
5	HEC	A	403	1	32,50,50	1.40	3 (9%)	24,82,82	3.48	9 (37%)
5	HEC	B	402	1	32,50,50	1.64	7 (21%)	24,82,82	3.24	15 (62%)
8	EDO	B	405	-	3,3,3	0.54	0	2,2,2	0.01	0
6	ACT	D	401	-	3,3,3	0.83	0	3,3,3	1.05	0
6	ACT	A	407	-	3,3,3	0.81	0	3,3,3	1.51	0

In the following table, the Chirals column lists the number of chiral outliers, the number of chiral centers analysed, the number of these observed in the model and the number defined in the Chemical Component Dictionary. Similar counts are reported in the Torsion and Rings columns. '-' means no outliers of that kind were identified.

Mol	Type	Chain	Res	Link	Chirals	Torsions	Rings
9	PGE	F	402	-	-	5/7/7/7	-
5	HEC	B	403	1	-	2/10/54/54	-
5	HEC	A	402	1,10	-	2/10/54/54	-
5	HEC	A	403	1	-	2/10/54/54	-
5	HEC	B	402	1	-	3/10/54/54	-
8	EDO	B	405	-	-	1/1/1/1	-

All (23) bond length outliers are listed below:

Mol	Chain	Res	Type	Atoms	Z	Observed(Å)	Ideal(Å)
5	B	402	HEC	C4B-C3B	3.67	1.49	1.43
5	A	402	HEC	C2A-C1A	3.57	1.50	1.42
5	A	402	HEC	C3C-C4C	3.48	1.49	1.43
5	B	403	HEC	C3A-C4A	3.34	1.50	1.42
5	A	403	HEC	C3A-C4A	3.27	1.50	1.42
5	B	402	HEC	C3A-C4A	3.18	1.49	1.42
5	A	402	HEC	C3A-C4A	3.17	1.49	1.42
5	B	402	HEC	C3C-C4C	3.12	1.48	1.43
5	A	402	HEC	C1D-CHD	3.11	1.49	1.41
5	B	403	HEC	C4D-ND	-2.97	1.30	1.36
5	A	402	HEC	C4B-C3B	2.74	1.48	1.43
5	A	403	HEC	C3C-C4C	2.73	1.48	1.43
5	A	402	HEC	C1C-CHC	2.72	1.48	1.41
5	B	403	HEC	C2A-C1A	2.67	1.48	1.42
5	B	402	HEC	C1C-NC	-2.30	1.31	1.36
5	A	402	HEC	C1B-CHB	2.22	1.47	1.41
5	A	403	HEC	C4D-ND	-2.21	1.31	1.36

Continued on next page...

Continued from previous page...

Mol	Chain	Res	Type	Atoms	Z	Observed(Å)	Ideal(Å)
5	A	402	HEC	C4D-CHA	2.17	1.47	1.41
5	B	403	HEC	C3C-C4C	2.16	1.47	1.43
5	A	402	HEC	C1D-ND	-2.14	1.31	1.36
5	B	402	HEC	C1D-CHD	2.11	1.46	1.41
5	B	402	HEC	C1C-CHC	2.03	1.46	1.41
5	B	402	HEC	CAA-C2A	-2.01	1.48	1.52

All (54) bond angle outliers are listed below:

Mol	Chain	Res	Type	Atoms	Z	Observed(°)	Ideal(°)
5	A	403	HEC	CBD-CAD-C3D	-8.97	97.32	112.62
5	A	403	HEC	C1D-C2D-C3D	-7.34	101.89	107.00
5	A	403	HEC	CMB-C2B-C3B	6.96	134.01	125.82
5	B	403	HEC	CBD-CAD-C3D	-6.95	100.75	112.62
5	B	402	HEC	CMB-C2B-C3B	6.68	133.67	125.82
5	B	402	HEC	CMC-C2C-C3C	6.30	133.23	125.82
5	A	402	HEC	CBD-CAD-C3D	-6.03	102.33	112.62
5	B	403	HEC	C1D-C2D-C3D	-5.88	102.91	107.00
5	B	403	HEC	CMB-C2B-C3B	5.85	132.70	125.82
5	B	402	HEC	CBD-CAD-C3D	-5.81	102.71	112.62
5	A	403	HEC	CBA-CAA-C2A	-5.40	103.50	112.60
5	A	402	HEC	CMB-C2B-C3B	5.33	132.09	125.82
5	A	402	HEC	CMC-C2C-C3C	5.26	132.01	125.82
5	B	403	HEC	CMC-C2C-C3C	4.51	131.12	125.82
5	B	403	HEC	CBA-CAA-C2A	-4.49	105.04	112.60
5	A	402	HEC	C1D-C2D-C3D	-4.38	103.95	107.00
5	B	402	HEC	CMB-C2B-C1B	-4.25	121.94	128.46
5	B	402	HEC	CBA-CAA-C2A	-4.13	105.65	112.60
5	B	402	HEC	C1D-C2D-C3D	-3.97	104.23	107.00
5	A	403	HEC	CMB-C2B-C1B	-3.86	122.54	128.46
5	B	402	HEC	C2B-C3B-C4B	-3.75	102.30	106.35
5	B	402	HEC	CMC-C2C-C1C	-3.74	122.72	128.46
5	A	403	HEC	CMC-C2C-C3C	3.67	130.14	125.82
5	A	402	HEC	C4C-C3C-C2C	-3.67	102.39	106.35
5	A	402	HEC	CMC-C2C-C1C	-3.48	123.11	128.46
5	A	402	HEC	CBA-CAA-C2A	-3.18	107.25	112.60
5	B	402	HEC	C4C-C3C-C2C	-3.15	102.95	106.35
5	B	403	HEC	CMB-C2B-C1B	-2.83	124.12	128.46
5	B	403	HEC	CMD-C2D-C3D	2.68	130.00	124.94
5	B	403	HEC	C4C-C3C-C2C	-2.57	103.58	106.35
6	F	401	ACT	OXT-C-CH3	2.53	125.65	115.18
5	B	402	HEC	CMD-C2D-C3D	2.51	129.68	124.94

Continued on next page...

Continued from previous page...

Mol	Chain	Res	Type	Atoms	Z	Observed(°)	Ideal(°)
5	B	402	HEC	O2D-CGD-CBD	2.48	122.00	114.03
5	A	402	HEC	CAA-CBA-CGA	-2.48	106.81	113.76
5	B	402	HEC	O1D-CGD-CBD	-2.48	115.13	123.08
5	A	402	HEC	C2B-C3B-C4B	-2.47	103.68	106.35
5	A	402	HEC	CMB-C2B-C1B	-2.44	124.72	128.46
5	A	403	HEC	C4C-C3C-C2C	-2.38	103.78	106.35
6	B	404	ACT	OXT-C-O	-2.38	113.28	122.05
5	B	403	HEC	CAD-CBD-CGD	-2.37	107.12	113.76
5	A	403	HEC	CMD-C2D-C3D	2.33	129.33	124.94
5	B	403	HEC	C2B-C3B-C4B	-2.25	103.92	106.35
5	B	403	HEC	C3B-C4B-NB	2.23	115.16	110.94
5	B	403	HEC	C3C-C4C-NC	2.20	115.10	110.94
5	B	402	HEC	C3B-C4B-NB	2.20	115.09	110.94
5	A	402	HEC	C3B-C4B-NB	2.18	115.05	110.94
5	A	403	HEC	C2B-C3B-C4B	-2.15	104.03	106.35
5	B	402	HEC	O2A-CGA-CBA	2.13	120.87	114.03
5	B	402	HEC	CMA-C3A-C2A	2.10	128.90	124.94
5	B	403	HEC	CMC-C2C-C1C	-2.10	125.24	128.46
5	A	402	HEC	CMA-C3A-C2A	2.10	128.89	124.94
5	A	402	HEC	CMD-C2D-C3D	2.04	128.78	124.94
6	A	404	ACT	OXT-C-O	-2.03	114.56	122.05
5	A	402	HEC	C3C-C4C-NC	2.03	114.77	110.94

There are no chirality outliers.

All (15) torsion outliers are listed below:

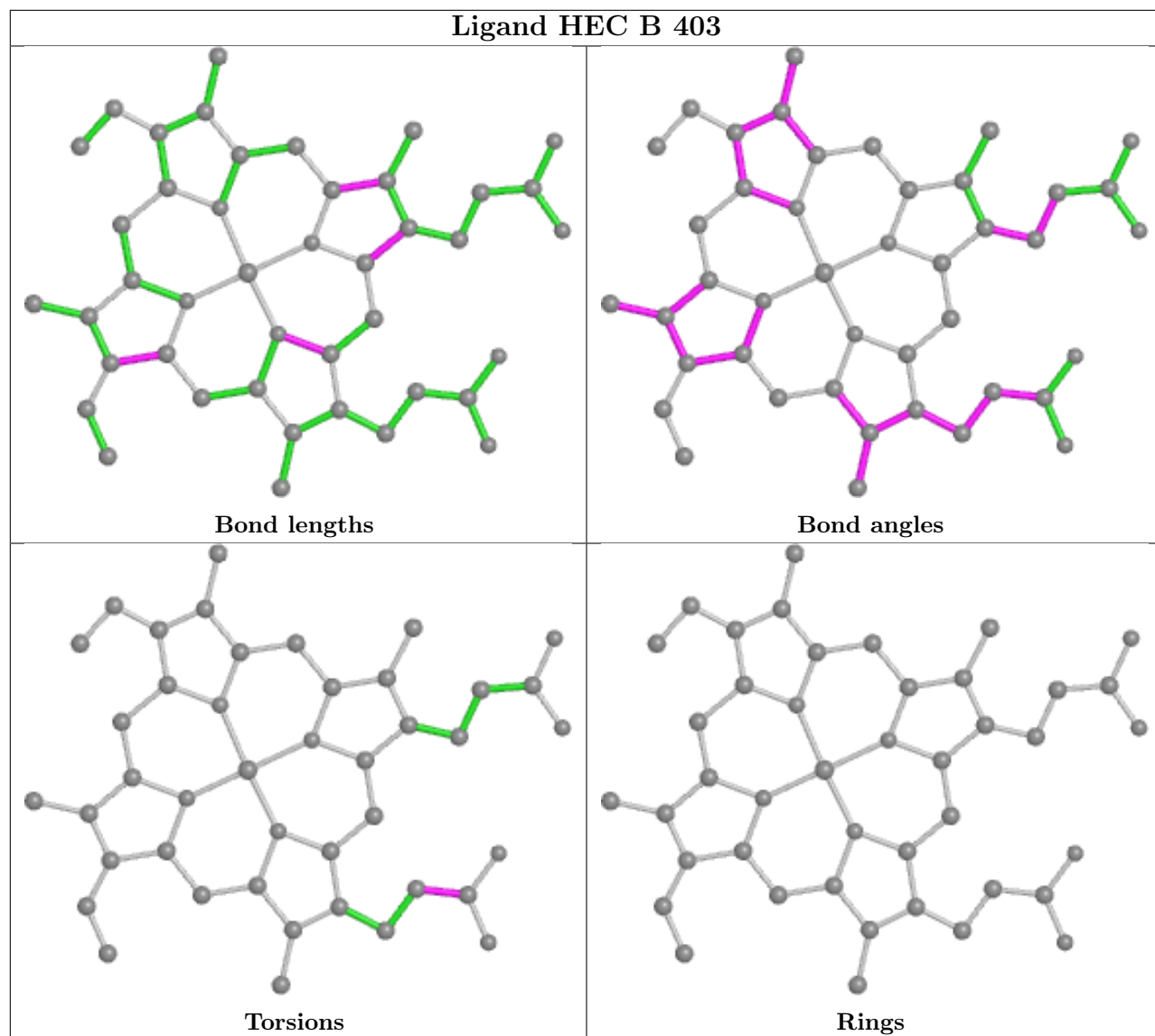
Mol	Chain	Res	Type	Atoms
8	B	405	EDO	O1-C1-C2-O2
9	F	402	PGE	O2-C3-C4-O3
9	F	402	PGE	O3-C5-C6-O4
9	F	402	PGE	C3-C4-O3-C5
9	F	402	PGE	C1-C2-O2-C3
9	F	402	PGE	O1-C1-C2-O2
5	B	402	HEC	CAD-CBD-CGD-O2D
5	A	402	HEC	CAD-CBD-CGD-O2D
5	A	402	HEC	CAD-CBD-CGD-O1D
5	B	403	HEC	CAD-CBD-CGD-O2D
5	A	403	HEC	CAD-CBD-CGD-O2D
5	A	403	HEC	CAD-CBD-CGD-O1D
5	B	403	HEC	CAD-CBD-CGD-O1D
5	B	402	HEC	CAD-CBD-CGD-O1D
5	B	402	HEC	CAA-CBA-CGA-O2A

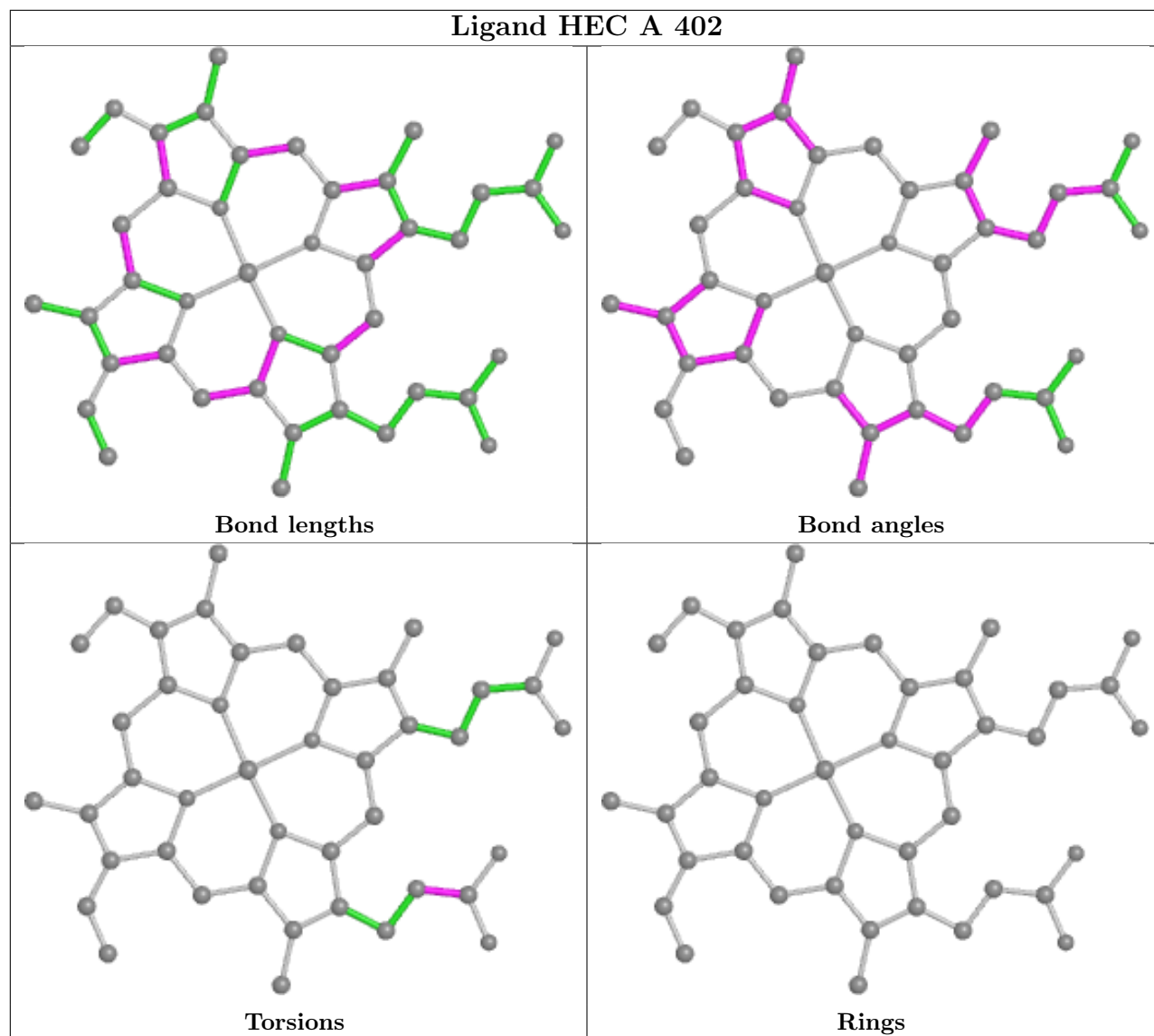
There are no ring outliers.

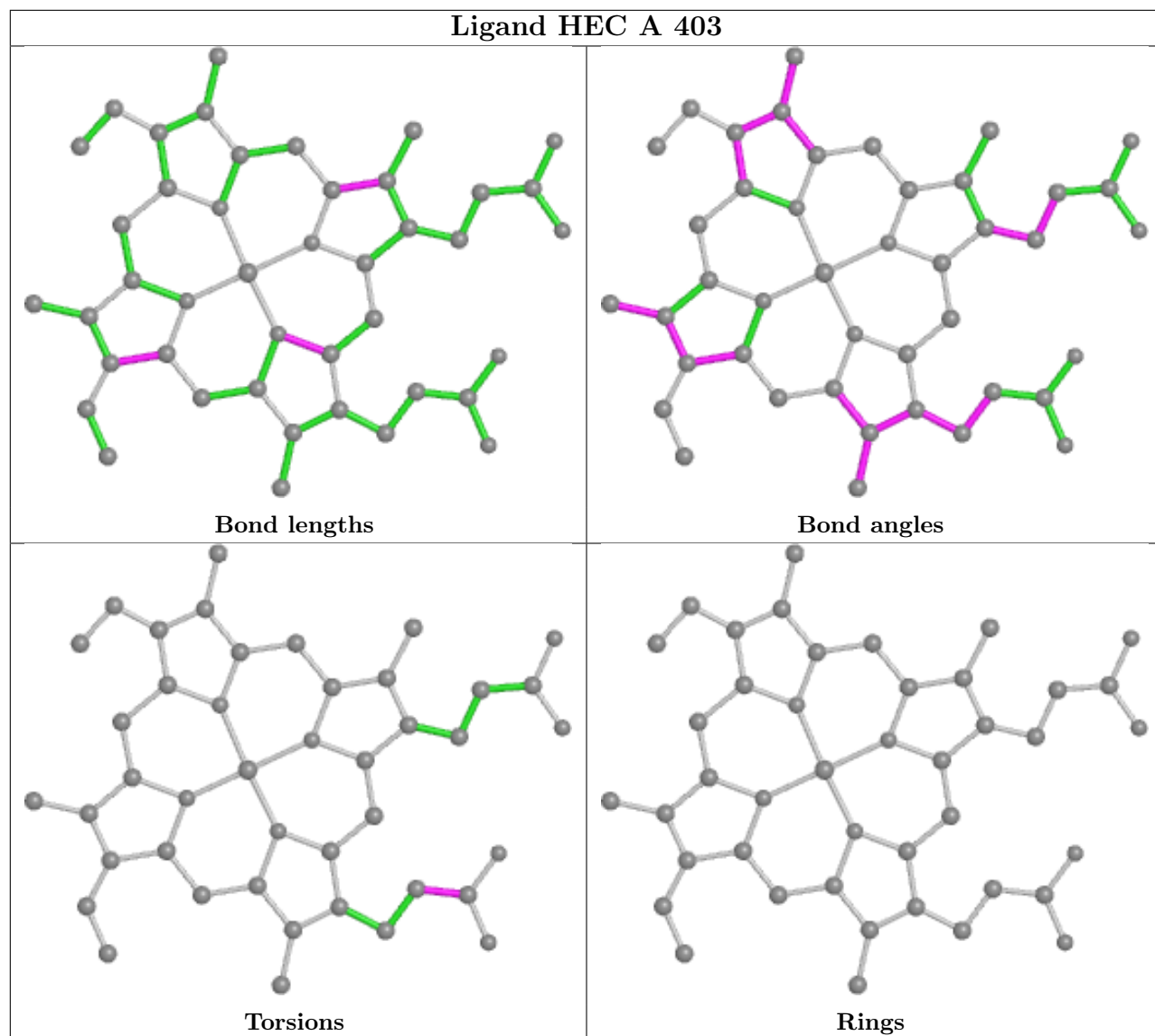
5 monomers are involved in 8 short contacts:

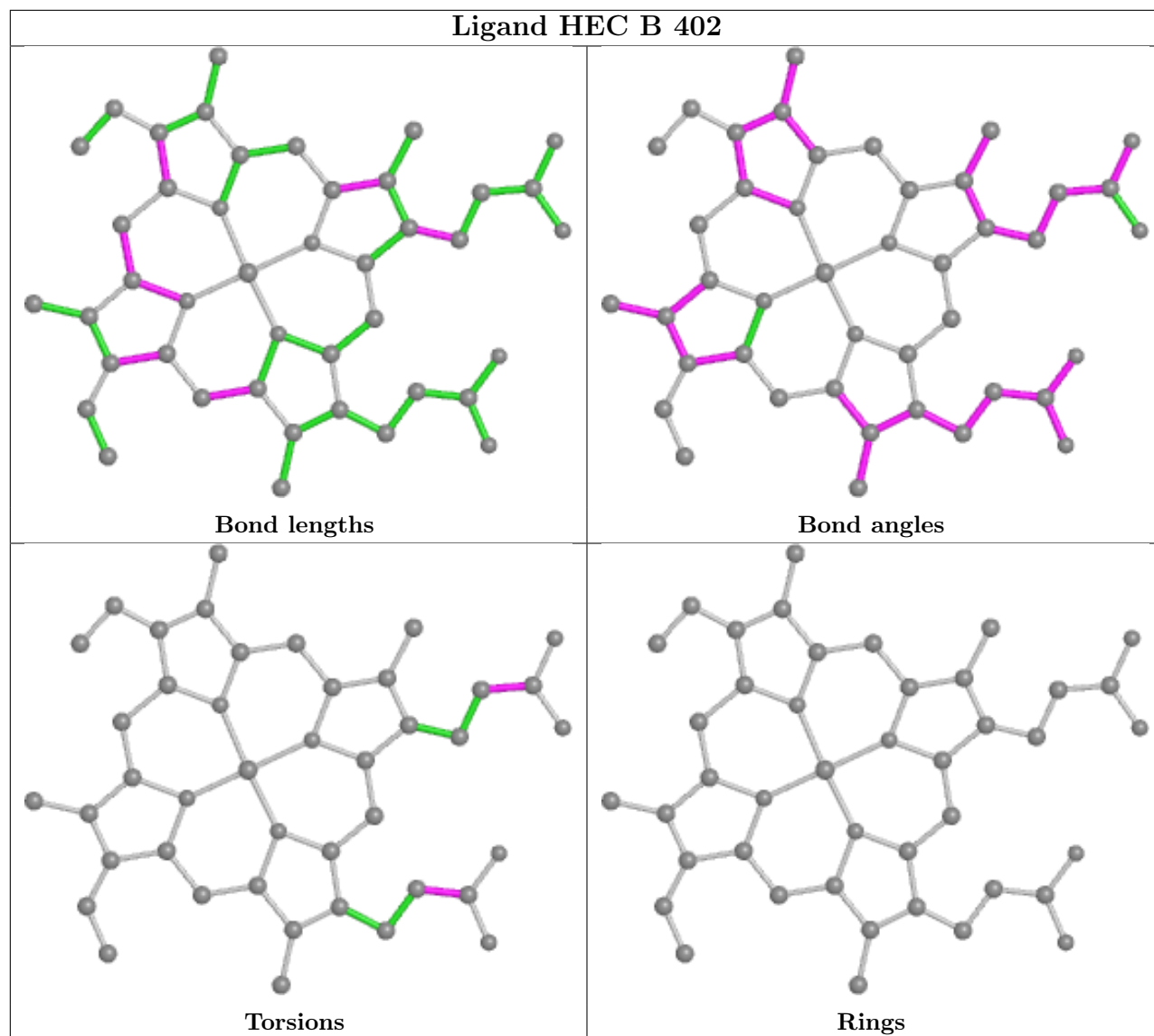
Mol	Chain	Res	Type	Clashes	Symm-Clashes
9	F	402	PGE	1	0
5	B	403	HEC	1	0
5	A	402	HEC	2	0
5	A	403	HEC	2	0
5	B	402	HEC	2	0

The following is a two-dimensional graphical depiction of Mogul quality analysis of bond lengths, bond angles, torsion angles, and ring geometry for all instances of the Ligand of Interest. In addition, ligands with molecular weight > 250 and outliers as shown on the validation Tables will also be included. For torsion angles, if less than 5% of the Mogul distribution of torsion angles is within 10 degrees of the torsion angle in question, then that torsion angle is considered an outlier. Any bond that is central to one or more torsion angles identified as an outlier by Mogul will be highlighted in the graph. For rings, the root-mean-square deviation (RMSD) between the ring in question and similar rings identified by Mogul is calculated over all ring torsion angles. If the average RMSD is greater than 60 degrees and the minimal RMSD between the ring in question and any Mogul-identified rings is also greater than 60 degrees, then that ring is considered an outlier. The outliers are highlighted in purple. The color gray indicates Mogul did not find sufficient equivalents in the CSD to analyse the geometry.









5.7 Other polymers [\(i\)](#)

There are no such residues in this entry.

5.8 Polymer linkage issues [\(i\)](#)

There are no chain breaks in this entry.

6 Fit of model and data

6.1 Protein, DNA and RNA chains

In the following table, the column labelled ‘#RSRZ > 2’ contains the number (and percentage) of RSRZ outliers, followed by percent RSRZ outliers for the chain as percentile scores relative to all X-ray entries and entries of similar resolution. The OWAB column contains the minimum, median, 95th percentile and maximum values of the occupancy-weighted average B-factor per residue. The column labelled ‘Q < 0.9’ lists the number of (and percentage) of residues with an average occupancy less than 0.9.

Mol	Chain	Analysed	<RSRZ>	#RSRZ>2	OWAB(Å ²)	Q<0.9
1	A	354/373 (94%)	-0.41	2 (0%) 89 91	30, 42, 59, 74	0
1	B	357/373 (95%)	-0.49	2 (0%) 89 91	24, 35, 53, 80	0
2	C	128/137 (93%)	0.16	2 (1%) 72 75	27, 39, 64, 95	0
2	E	125/137 (91%)	-0.04	2 (1%) 72 75	25, 30, 45, 68	0
3	D	376/385 (97%)	-0.14	8 (2%) 63 68	27, 44, 70, 84	0
3	F	376/385 (97%)	-0.35	0 100 100	23, 32, 49, 68	0
All	All	1716/1790 (95%)	-0.29	16 (0%) 84 86	23, 37, 61, 95	0

All (16) RSRZ outliers are listed below:

Mol	Chain	Res	Type	RSRZ
1	A	6	ALA	5.2
1	B	6	ALA	4.9
1	B	7	ASP	4.1
2	C	106	ILE	3.9
2	E	6	GLY	3.7
3	D	386	GLY	3.7
1	A	7	ASP	3.4
2	C	131	SER	3.2
3	D	11	GLN	2.9
3	D	207	GLY	2.9
3	D	208	THR	2.7
3	D	270	GLU	2.7
3	D	209	GLU	2.6
3	D	135	VAL	2.5
3	D	56	ALA	2.1
2	E	103	ALA	2.0

6.2 Non-standard residues in protein, DNA, RNA chains [i](#)

In the following table, the Atoms column lists the number of modelled atoms in the group and the number defined in the chemical component dictionary. The B-factors column lists the minimum, median, 95th percentile and maximum values of B factors of atoms in the group. The column labelled 'Q< 0.9' lists the number of atoms with occupancy less than 0.9.

Mol	Type	Chain	Res	Atoms	RSCC	RSR	B-factors(Å ²)	Q<0.9
2	0AF	C	57[A]	15/16	0.93	0.21	35,39,43,43	15
2	0AF	C	57[B]	15/16	0.93	0.21	44,51,55,55	15
2	0AF	E	57[A]	15/16	0.95	0.22	29,31,33,33	15
2	0AF	E	57[B]	15/16	0.95	0.22	32,36,40,45	15

6.3 Carbohydrates [i](#)

There are no monosaccharides in this entry.

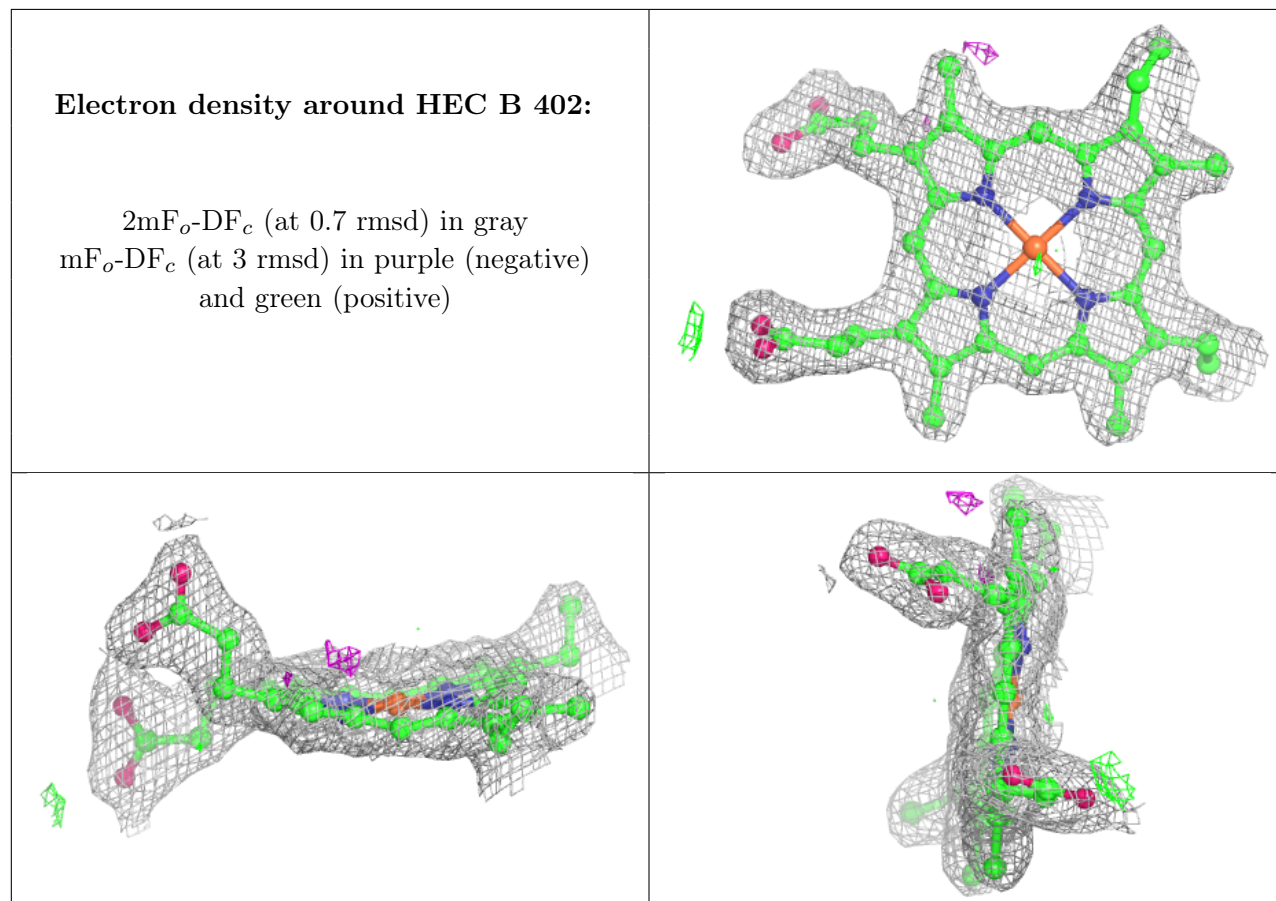
6.4 Ligands [i](#)

In the following table, the Atoms column lists the number of modelled atoms in the group and the number defined in the chemical component dictionary. The B-factors column lists the minimum, median, 95th percentile and maximum values of B factors of atoms in the group. The column labelled 'Q< 0.9' lists the number of atoms with occupancy less than 0.9.

Mol	Type	Chain	Res	Atoms	RSCC	RSR	B-factors(Å ²)	Q<0.9
9	PGE	F	402	10/10	0.61	0.22	78,91,97,99	0
6	ACT	A	407	4/4	0.86	0.14	74,74,74,75	0
6	ACT	A	404	4/4	0.86	0.17	80,80,81,81	0
7	NA	A	405	1/1	0.90	0.07	55,55,55,55	0
8	EDO	B	405	4/4	0.91	0.09	44,47,49,49	0
6	ACT	B	404	4/4	0.96	0.11	61,62,63,63	0
7	NA	A	406	1/1	0.96	0.10	52,52,52,52	0
7	NA	B	406	1/1	0.96	0.06	42,42,42,42	0
6	ACT	D	401	4/4	0.96	0.11	44,46,47,47	0
6	ACT	F	401	4/4	0.96	0.09	47,49,50,51	0
7	NA	B	407	1/1	0.97	0.07	38,38,38,38	0
5	HEC	B	402	43/43	0.98	0.08	23,30,34,35	0
5	HEC	A	402	43/43	0.98	0.07	28,34,37,39	0
5	HEC	A	403	43/43	0.98	0.09	27,33,36,37	0
5	HEC	B	403	43/43	0.99	0.10	19,24,29,34	0
4	CA	A	401	1/1	0.99	0.07	34,34,34,34	0
4	CA	B	401	1/1	1.00	0.11	27,27,27,27	0

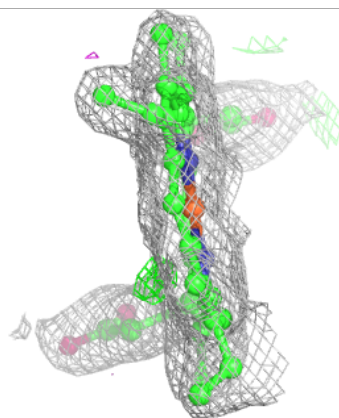
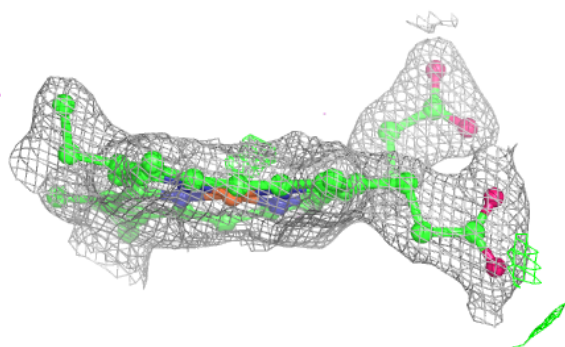
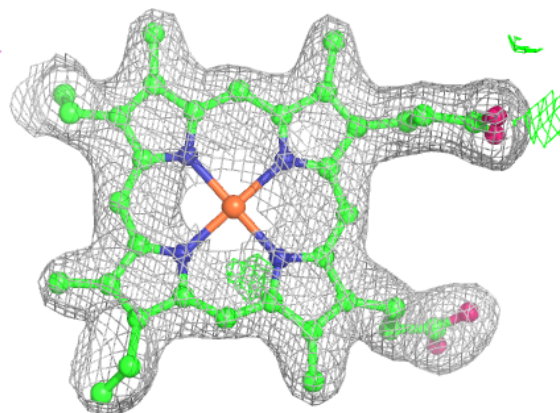
The following is a graphical depiction of the model fit to experimental electron density of all

instances of the Ligand of Interest. In addition, ligands with molecular weight > 250 and outliers as shown on the geometry validation Tables will also be included. Each fit is shown from different orientation to approximate a three-dimensional view.



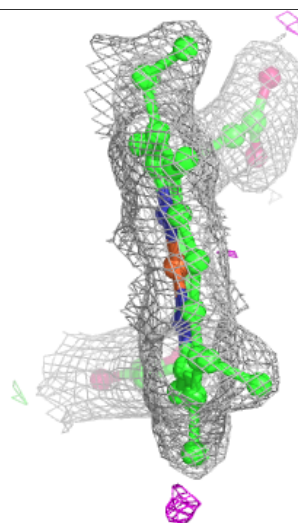
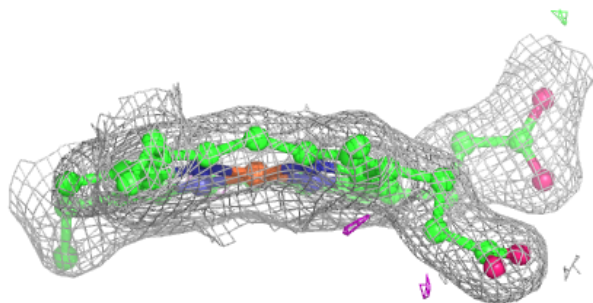
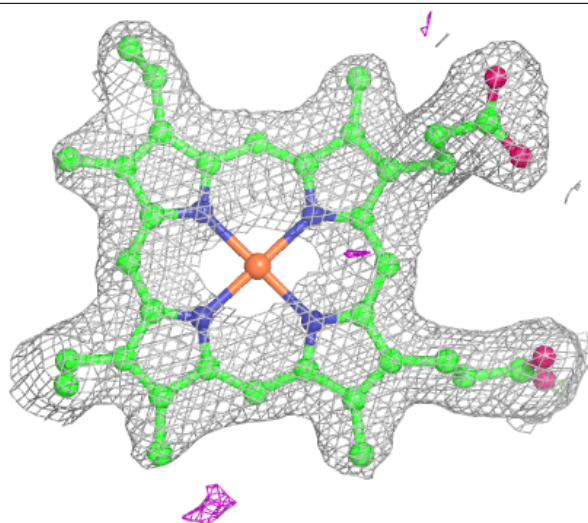
Electron density around HEC A 402:

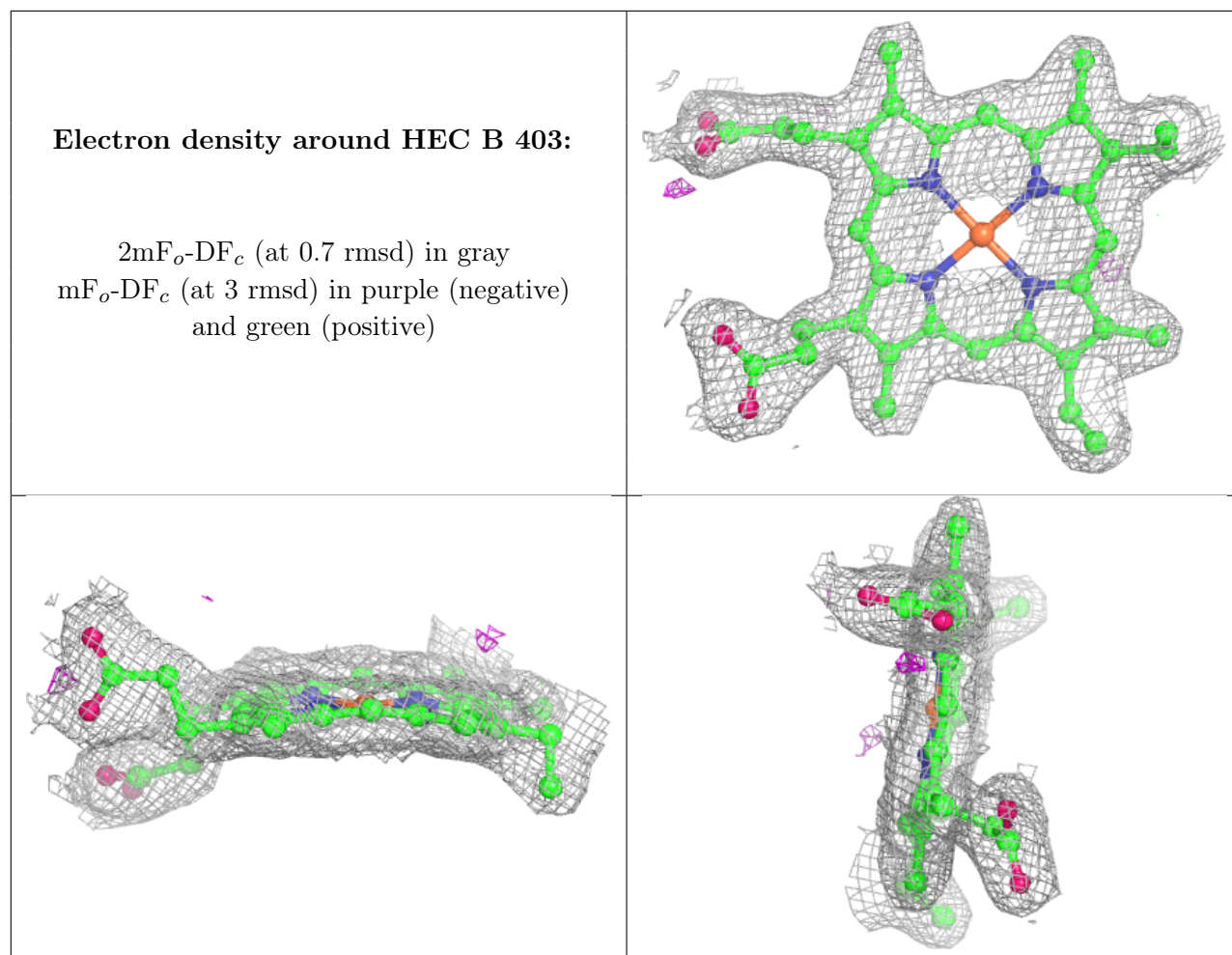
$2mF_o-DF_c$ (at 0.7 rmsd) in gray
 mF_o-DF_c (at 3 rmsd) in purple (negative)
and green (positive)



Electron density around HEC A 403:

$2mF_o-DF_c$ (at 0.7 rmsd) in gray
 mF_o-DF_c (at 3 rmsd) in purple (negative)
and green (positive)





6.5 Other polymers [\(i\)](#)

There are no such residues in this entry.