



wwPDB X-ray Structure Validation Summary Report ⓘ

Jan 6, 2024 – 07:31 pm GMT

PDB ID : 6F9R
Title : Crystal structure of human Angiotensin-1 converting enzyme N-domain in complex with Sampatrilat-Asp.
Authors : Cozier, G.E.; Acharya, K.R.
Deposited on : 2017-12-15
Resolution : 1.85 Å(reported)

This is a wwPDB X-ray Structure Validation Summary Report for a publicly released PDB entry.

We welcome your comments at validation@mail.wwpdb.org

A user guide is available at

<https://www.wwpdb.org/validation/2017/XrayValidationReportHelp>

with specific help available everywhere you see the ⓘ symbol.

The types of validation reports are described at

<http://www.wwpdb.org/validation/2017/FAQs#types>.

The following versions of software and data (see [references ⓘ](#)) were used in the production of this report:

MolProbity : 4.02b-467
Mogul : 1.8.4, CSD as541be (2020)
Xtriage (Phenix) : 1.13
EDS : 2.36
buster-report : 1.1.7 (2018)
Percentile statistics : 20191225.v01 (using entries in the PDB archive December 25th 2019)
Refmac : 5.8.0158
CCP4 : 7.0.044 (Gargrove)
Ideal geometry (proteins) : Engh & Huber (2001)
Ideal geometry (DNA, RNA) : Parkinson et al. (1996)
Validation Pipeline (wwPDB-VP) : 2.36

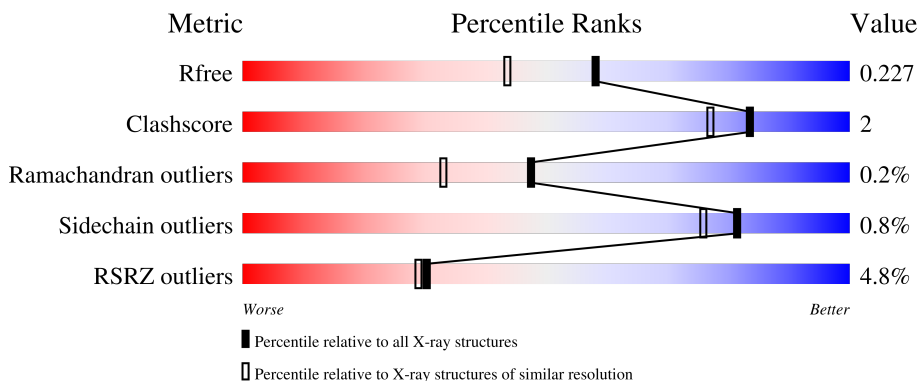
1 Overall quality at a glance

The following experimental techniques were used to determine the structure:

X-RAY DIFFRACTION

The reported resolution of this entry is 1.85 Å.

Percentile scores (ranging between 0-100) for global validation metrics of the entry are shown in the following graphic. The table shows the number of entries on which the scores are based.



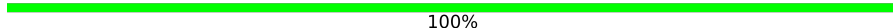
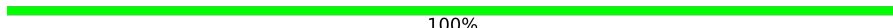
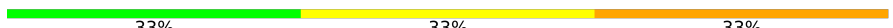
Metric	Whole archive (#Entries)	Similar resolution (#Entries, resolution range(Å))
R_{free}	130704	2469 (1.86-1.86)
Clashscore	141614	2625 (1.86-1.86)
Ramachandran outliers	138981	2592 (1.86-1.86)
Sidechain outliers	138945	2592 (1.86-1.86)
RSRZ outliers	127900	2436 (1.86-1.86)

The table below summarises the geometric issues observed across the polymeric chains and their fit to the electron density. The red, orange, yellow and green segments of the lower bar indicate the fraction of residues that contain outliers for ≥ 3 , 2, 1 and 0 types of geometric quality criteria respectively. A grey segment represents the fraction of residues that are not modelled. The numeric value for each fraction is indicated below the corresponding segment, with a dot representing fractions $\leq 5\%$. The upper red bar (where present) indicates the fraction of residues that have poor fit to the electron density. The numeric value is given above the bar.

Mol	Chain	Length	Quality of chain
1	A	629	
1	B	629	
2	C	2	
3	D	4	
3	G	4	

Continued on next page...

Continued from previous page...

Mol	Chain	Length	Quality of chain
4	E	2	 100%
4	F	2	 100%
5	H	3	 33% 33% 33%

The following table lists non-polymeric compounds, carbohydrate monomers and non-standard residues in protein, DNA, RNA chains that are outliers for geometric or electron-density-fit criteria:

Mol	Type	Chain	Res	Chirality	Geometry	Clashes	Electron density
13	ACT	A	717	-	-	X	-
3	BMA	D	3	-	-	-	X
4	NAG	F	2	-	-	-	X

2 Entry composition [i](#)

There are 15 unique types of molecules in this entry. The entry contains 21728 atoms, of which 10253 are hydrogens and 0 are deuteriums.

In the tables below, the ZeroOcc column contains the number of atoms modelled with zero occupancy, the AltConf column contains the number of residues with at least one atom in alternate conformation and the Trace column contains the number of residues modelled with at most 2 atoms.

- Molecule 1 is a protein called Angiotensin-converting enzyme.

Mol	Chain	Residues	Atoms						ZeroOcc	AltConf	Trace
			Total	C	H	N	O	S			
1	A	607	9780	3206	4779	862	914	19	0	8	0
1	B	604	10442	3425	5102	917	979	19	0	54	0

There are 16 discrepancies between the modelled and reference sequences:

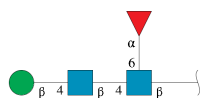
Chain	Residue	Modelled	Actual	Comment	Reference
A	9	GLN	ASN	conflict	UNP P12821
A	25	GLN	ASN	conflict	UNP P12821
A	82	GLN	ASN	conflict	UNP P12821
A	117	GLN	ASN	conflict	UNP P12821
A	289	GLN	ASN	conflict	UNP P12821
A	545	ARG	GLN	conflict	UNP P12821
A	576	LEU	PRO	conflict	UNP P12821
A	629	LEU	-	expression tag	UNP P12821
B	9	GLN	ASN	conflict	UNP P12821
B	25	GLN	ASN	conflict	UNP P12821
B	82	GLN	ASN	conflict	UNP P12821
B	117	GLN	ASN	conflict	UNP P12821
B	289	GLN	ASN	conflict	UNP P12821
B	545	ARG	GLN	conflict	UNP P12821
B	576	LEU	PRO	conflict	UNP P12821
B	629	LEU	-	expression tag	UNP P12821

- Molecule 2 is an oligosaccharide called alpha-L-fucopyranose-(1-6)-2-acetamido-2-deoxy-beta-D-glucopyranose.



Mol	Chain	Residues	Atoms					ZeroOcc	AltConf	Trace
			Total	C	H	N	O			
2	C	2	46	14	22	1	9	0	0	0

- Molecule 3 is an oligosaccharide called beta-D-mannopyranose-(1-4)-2-acetamido-2-deoxy-beta-D-glucopyranose-(1-4)-[alpha-L-fucopyranose-(1-6)]2-acetamido-2-deoxy-beta-D-glucopyranose.



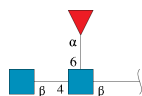
Mol	Chain	Residues	Atoms					ZeroOcc	AltConf	Trace
			Total	C	H	N	O			
3	D	4	92	28	43	2	19	0	0	0
3	G	4	92	28	43	2	19	0	0	0

- Molecule 4 is an oligosaccharide called 2-acetamido-2-deoxy-beta-D-glucopyranose-(1-4)-2-acetamido-2-deoxy-beta-D-glucopyranose.



Mol	Chain	Residues	Atoms					ZeroOcc	AltConf	Trace
			Total	C	H	N	O			
4	E	2	53	16	25	2	10	0	0	0
4	F	2	55	16	27	2	10	0	0	0

- Molecule 5 is an oligosaccharide called 2-acetamido-2-deoxy-beta-D-glucopyranose-(1-4)-[alpha-L-fucopyranose-(1-6)]2-acetamido-2-deoxy-beta-D-glucopyranose.

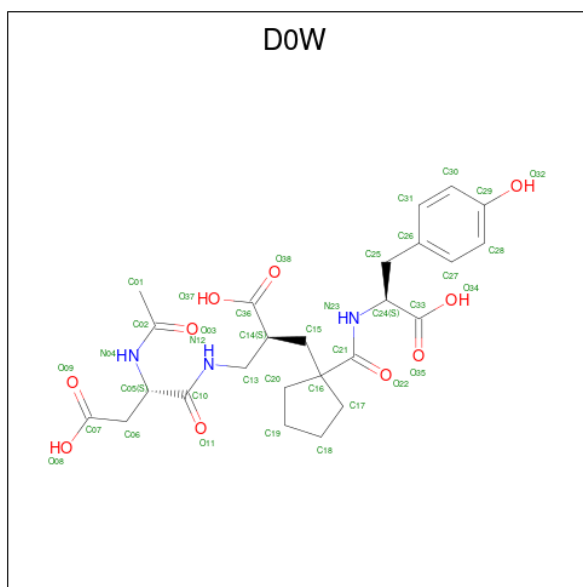


Mol	Chain	Residues	Atoms					ZeroOcc	AltConf	Trace
			Total	C	H	N	O			
5	H	3	72	22	34	2	14	0	0	0

- Molecule 6 is ZINC ION (three-letter code: ZN) (formula: Zn).

Mol	Chain	Residues	Atoms	ZeroOcc	AltConf
6	A	1	Total Zn 1 1	0	0
6	B	1	Total Zn 1 1	0	0

- Molecule 7 is Sampatrilat-Asp (three-letter code: D0W) (formula: C₂₅H₃₃N₃O₁₀).



Mol	Chain	Residues	Atoms	ZeroOcc	AltConf
7	A	1	Total C H N O 68 25 30 3 10	0	0
7	B	1	Total C H N O 68 25 30 3 10	0	0

- Molecule 8 is CHLORIDE ION (three-letter code: CL) (formula: Cl).

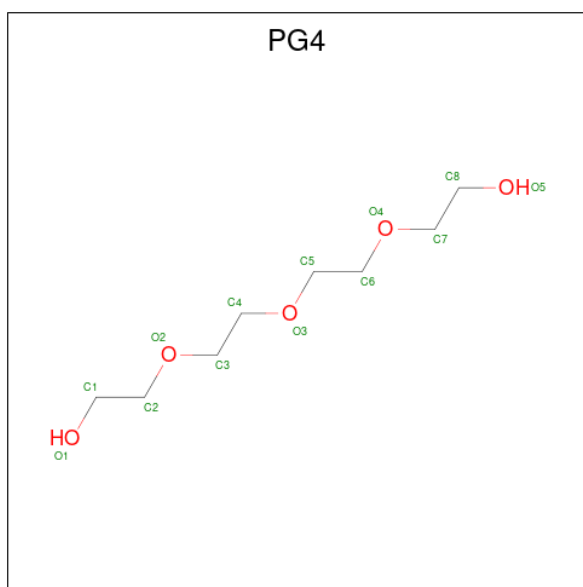
Mol	Chain	Residues	Atoms	ZeroOcc	AltConf
8	A	1	Total Cl 1 1	0	0
8	B	1	Total Cl 1 1	0	0

- Molecule 9 is DI(HYDROXYETHYL)ETHER (three-letter code: PEG) (formula: C₄H₁₀O₃).



Mol	Chain	Residues	Atoms				ZeroOcc	AltConf
			Total	C	H	O		
9	A	1	17	4	10	3	0	0
9	B	1	17	4	10	3	0	0
9	B	1	17	4	10	3	0	0

- Molecule 10 is TETRAETHYLENE GLYCOL (three-letter code: PG4) (formula: C₈H₁₈O₅).

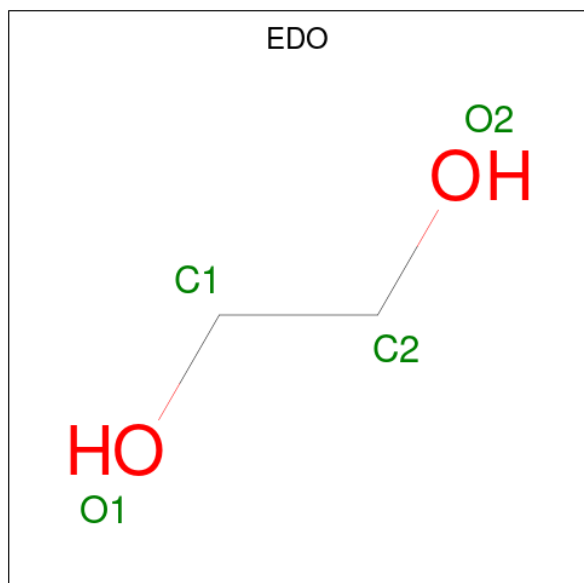


Mol	Chain	Residues	Atoms				ZeroOcc	AltConf
			Total	C	H	O		
10	A	1	31	8	18	5	0	0

- Molecule 11 is MAGNESIUM ION (three-letter code: MG) (formula: Mg).

Mol	Chain	Residues	Atoms		ZeroOcc	AltConf
11	A	1	Total	Mg	0	0
			1	1		
11	B	2	Total	Mg	0	0
			2	2		

- Molecule 12 is 1,2-ETHANEDIOL (three-letter code: EDO) (formula: C₂H₆O₂).



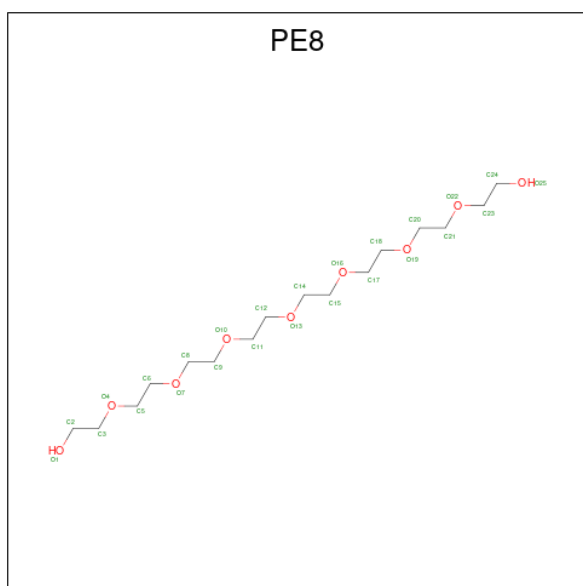
Mol	Chain	Residues	Atoms				ZeroOcc	AltConf
12	A	1	Total	C	H	O	0	0
			10	2	6	2		
12	B	1	Total	C	H	O	0	0
			10	2	6	2		
12	B	1	Total	C	H	O	0	0
			10	2	6	2		
12	B	1	Total	C	H	O	0	0
			10	2	6	2		

- Molecule 13 is ACETATE ION (three-letter code: ACT) (formula: C₂H₃O₂).



Mol	Chain	Residues	Atoms				ZeroOcc	AltConf
13	A	1	Total	C	H	O	0	0
			7	2	3	2		
13	A	1	Total	C	H	O	0	0
			7	2	3	2		

- Molecule 14 is 3,6,9,12,15,18,21-HEPTAOXATRICOSANE-1,23-DIOL (three-letter code: PE8) (formula: C₁₆H₃₄O₉).



Mol	Chain	Residues	Atoms				ZeroOcc	AltConf
14	B	1	Total	C	H	O	0	0
			59	16	34	9		

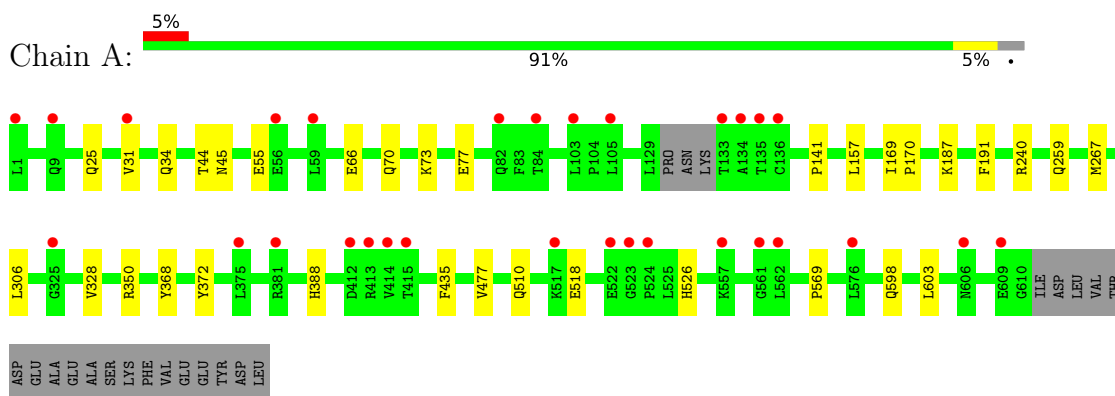
- Molecule 15 is water.

Mol	Chain	Residues	Atoms		ZeroOcc	AltConf
15	A	332	Total 338	O 338	0	6
15	B	407	Total 410	O 410	0	3

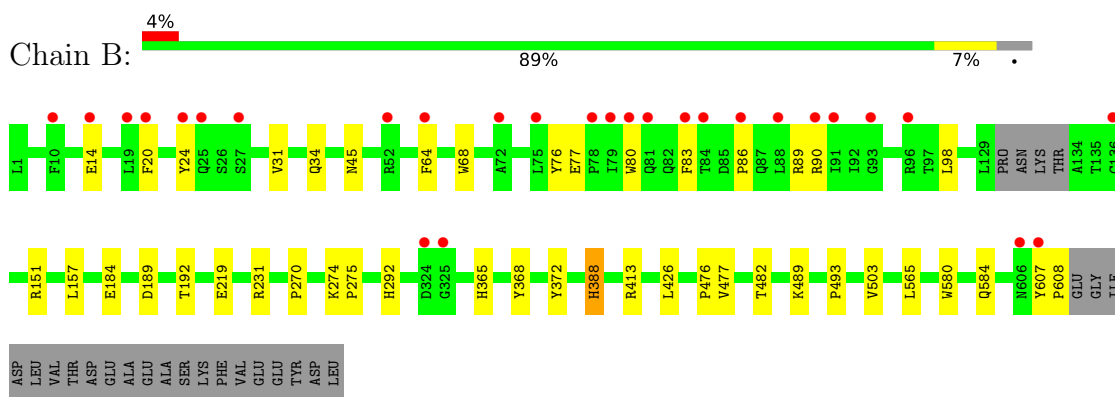
3 Residue-property plots [i](#)

These plots are drawn for all protein, RNA, DNA and oligosaccharide chains in the entry. The first graphic for a chain summarises the proportions of the various outlier classes displayed in the second graphic. The second graphic shows the sequence view annotated by issues in geometry and electron density. Residues are color-coded according to the number of geometric quality criteria for which they contain at least one outlier: green = 0, yellow = 1, orange = 2 and red = 3 or more. A red dot above a residue indicates a poor fit to the electron density ($RSRZ > 2$). Stretches of 2 or more consecutive residues without any outlier are shown as a green connector. Residues present in the sample, but not in the model, are shown in grey.

- Molecule 1: Angiotensin-converting enzyme



- Molecule 1: Angiotensin-converting enzyme



- Molecule 2: alpha-L-fucopyranose-(1-6)-2-acetamido-2-deoxy-beta-D-glucopyranose



- Molecule 3: beta-D-mannopyranose-(1-4)-2-acetamido-2-deoxy-beta-D-glucopyranose-(1-4)-[alpha-L-fucopyranose-(1-6)]2-acetamido-2-deoxy-beta-D-glucopyranose





- Molecule 3: beta-D-mannopyranose-(1-4)-2-acetamido-2-deoxy-beta-D-glucopyranose-(1-4)-[alpha-L-fucopyranose-(1-6)]2-acetamido-2-deoxy-beta-D-glucopyranose

Chain G:  100%



- Molecule 4: 2-acetamido-2-deoxy-beta-D-glucopyranose-(1-4)-2-acetamido-2-deoxy-beta-D-glucopyranose

Chain E:  100%



- Molecule 4: 2-acetamido-2-deoxy-beta-D-glucopyranose-(1-4)-2-acetamido-2-deoxy-beta-D-glucopyranose

Chain F:  100%



- Molecule 5: 2-acetamido-2-deoxy-beta-D-glucopyranose-(1-4)-[alpha-L-fucopyranose-(1-6)]2-acetamido-2-deoxy-beta-D-glucopyranose

Chain H:  33% 33% 33%



4 Data and refinement statistics

Property	Value	Source
Space group	P 1	Depositor
Cell constants a, b, c, α , β , γ	72.59Å 76.97Å 82.64Å 88.43° 64.40° 75.32°	Depositor
Resolution (Å)	44.39 – 1.85 56.01 – 1.85	Depositor EDS
% Data completeness (in resolution range)	98.6 (44.39-1.85) 98.6 (56.01-1.85)	Depositor EDS
R_{merge}	(Not available)	Depositor
R_{sym}	(Not available)	Depositor
$\langle I/\sigma(I) \rangle$ ¹	1.76 (at 1.86Å)	Xtrriage
Refinement program	PHENIX (1.12_2829: ???)	Depositor
R, R_{free}	0.198 , 0.228 0.198 , 0.227	Depositor DCC
R_{free} test set	2592 reflections (1.98%)	wwPDB-VP
Wilson B-factor (Å ²)	27.1	Xtrriage
Anisotropy	0.228	Xtrriage
Bulk solvent k_{sol} (e/Å ³), B_{sol} (Å ²)	0.40 , 47.4	EDS
L-test for twinning ²	$\langle L \rangle = 0.51$, $\langle L^2 \rangle = 0.34$	Xtrriage
Estimated twinning fraction	No twinning to report.	Xtrriage
F_o, F_c correlation	0.96	EDS
Total number of atoms	21728	wwPDB-VP
Average B, all atoms (Å ²)	40.0	wwPDB-VP

Xtrriage's analysis on translational NCS is as follows: *The largest off-origin peak in the Patterson function is 5.82% of the height of the origin peak. No significant pseudotranslation is detected.*

¹Intensities estimated from amplitudes.

²Theoretical values of $\langle |L| \rangle$, $\langle L^2 \rangle$ for acentric reflections are 0.5, 0.333 respectively for untwinned datasets, and 0.375, 0.2 for perfectly twinned datasets.

5 Model quality [i](#)

5.1 Standard geometry [i](#)

Bond lengths and bond angles in the following residue types are not validated in this section: PEG, BMA, FUC, EDO, ACT, DOW, ZN, PG4, NAG, PE8, MG, CL

The Z score for a bond length (or angle) is the number of standard deviations the observed value is removed from the expected value. A bond length (or angle) with $|Z| > 5$ is considered an outlier worth inspection. RMSZ is the root-mean-square of all Z scores of the bond lengths (or angles).

Mol	Chain	Bond lengths		Bond angles	
		RMSZ	# Z >5	RMSZ	# Z >5
1	A	0.37	0/5175	0.49	0/7046
1	B	0.39	0/5527	0.52	0/7527
All	All	0.38	0/10702	0.51	0/14573

There are no bond length outliers.

There are no bond angle outliers.

There are no chirality outliers.

There are no planarity outliers.

5.2 Too-close contacts [i](#)

In the following table, the Non-H and H(model) columns list the number of non-hydrogen atoms and hydrogen atoms in the chain respectively. The H(added) column lists the number of hydrogen atoms added and optimized by MolProbity. The Clashes column lists the number of clashes within the asymmetric unit, whereas Symm-Clashes lists symmetry-related clashes.

Mol	Chain	Non-H	H(model)	H(added)	Clashes	Symm-Clashes
1	A	5001	4779	4761	16	0
1	B	5340	5102	5069	28	0
2	C	24	22	22	1	0
3	D	49	43	43	0	0
3	G	49	43	43	0	0
4	E	28	25	25	0	0
4	F	28	27	25	0	0
5	H	38	34	34	3	0
6	A	1	0	0	0	0
6	B	1	0	0	0	0
7	A	38	30	0	1	0

Continued on next page...

Continued from previous page...

Mol	Chain	Non-H	H(model)	H(added)	Clashes	Symm-Clashes
7	B	38	30	0	1	0
8	A	1	0	0	0	0
8	B	1	0	0	0	0
9	A	7	10	10	0	0
9	B	14	20	20	1	0
10	A	13	18	18	0	0
11	A	1	0	0	0	0
11	B	2	0	0	0	0
12	A	4	6	6	0	0
12	B	16	24	24	0	0
13	A	8	6	6	2	0
14	B	25	34	34	1	0
15	A	338	0	0	7	0
15	B	410	0	0	5	0
All	All	11475	10253	10140	51	0

The all-atom clashscore is defined as the number of clashes found per 1000 atoms (including hydrogen atoms). The all-atom clashscore for this structure is 2.

The worst 5 of 51 close contacts within the same asymmetric unit are listed below, sorted by their clash magnitude.

Atom-1	Atom-2	Interatomic distance (Å)	Clash overlap (Å)
1:A:526:HIS:ND1	15:A:805:HOH:O	2.21	0.73
1:B:90[A]:ARG:NH2	15:B:803:HOH:O	2.22	0.71
5:H:1:NAG:H83	5:H:1:NAG:H3	1.77	0.64
1:A:518:GLU:OE2	15:A:802:HOH:O	2.15	0.64
1:B:157:LEU:HD11	1:B:477:VAL:HG13	1.85	0.59

There are no symmetry-related clashes.

5.3 Torsion angles [i](#)

5.3.1 Protein backbone [i](#)

In the following table, the Percentiles column shows the percent Ramachandran outliers of the chain as a percentile score with respect to all X-ray entries followed by that with respect to entries of similar resolution.

The Analysed column shows the number of residues for which the backbone conformation was analysed, and the total number of residues.

Mol	Chain	Analysed	Favoured	Allowed	Outliers	Percentiles	
1	A	611/629 (97%)	597 (98%)	13 (2%)	1 (0%)	47	33
1	B	654/629 (104%)	641 (98%)	12 (2%)	1 (0%)	47	33
All	All	1265/1258 (101%)	1238 (98%)	25 (2%)	2 (0%)	47	33

All (2) Ramachandran outliers are listed below:

Mol	Chain	Res	Type
1	A	45	ASN
1	B	45	ASN

5.3.2 Protein sidechains [i](#)

In the following table, the Percentiles column shows the percent sidechain outliers of the chain as a percentile score with respect to all X-ray entries followed by that with respect to entries of similar resolution.

The Analysed column shows the number of residues for which the sidechain conformation was analysed, and the total number of residues.

Mol	Chain	Analysed	Rotameric	Outliers	Percentiles	
1	A	529/541 (98%)	524 (99%)	5 (1%)	78	72
1	B	564/541 (104%)	561 (100%)	3 (0%)	88	86
All	All	1093/1082 (101%)	1085 (99%)	8 (1%)	81	79

5 of 8 residues with a non-rotameric sidechain are listed below:

Mol	Chain	Res	Type
1	B	388	HIS
1	B	372	TYR
1	A	598	GLN
1	A	388	HIS
1	B	368	TYR

Sometimes sidechains can be flipped to improve hydrogen bonding and reduce clashes. There are no such sidechains identified.

5.3.3 RNA [i](#)

There are no RNA molecules in this entry.

5.4 Non-standard residues in protein, DNA, RNA chains [i](#)

There are no non-standard protein/DNA/RNA residues in this entry.

5.5 Carbohydrates [i](#)

17 monosaccharides are modelled in this entry.

In the following table, the Counts columns list the number of bonds (or angles) for which Mogul statistics could be retrieved, the number of bonds (or angles) that are observed in the model and the number of bonds (or angles) that are defined in the Chemical Component Dictionary. The Link column lists molecule types, if any, to which the group is linked. The Z score for a bond length (or angle) is the number of standard deviations the observed value is removed from the expected value. A bond length (or angle) with $|Z| > 2$ is considered an outlier worth inspection. RMSZ is the root-mean-square of all Z scores of the bond lengths (or angles).

Mol	Type	Chain	Res	Link	Bond lengths			Bond angles		
					Counts	RMSZ	# Z > 2	Counts	RMSZ	# Z > 2
2	NAG	C	1	1,2	14,14,15	0.28	0	17,19,21	0.69	0
2	FUC	C	2	2	10,10,11	1.18	1 (10%)	14,14,16	1.09	1 (7%)
3	NAG	D	1	1,3	14,14,15	0.30	0	17,19,21	0.42	0
3	NAG	D	2	3	14,14,15	0.21	0	17,19,21	0.66	1 (5%)
3	BMA	D	3	3	11,11,12	0.90	0	15,15,17	0.79	0
3	FUC	D	4	3	10,10,11	0.90	1 (10%)	14,14,16	0.92	1 (7%)
4	NAG	E	1	1,4	14,14,15	0.36	0	17,19,21	0.42	0
4	NAG	E	2	4	14,14,15	0.20	0	17,19,21	0.43	0
4	NAG	F	1	1,4	14,14,15	0.29	0	17,19,21	0.57	0
4	NAG	F	2	4	14,14,15	0.28	0	17,19,21	0.43	0
3	NAG	G	1	1,3	14,14,15	0.58	0	17,19,21	0.44	0
3	NAG	G	2	3	14,14,15	0.37	0	17,19,21	0.55	0
3	BMA	G	3	3	11,11,12	0.64	0	15,15,17	0.68	0
3	FUC	G	4	3	10,10,11	0.95	0	14,14,16	0.77	0
5	NAG	H	1	5,1	14,14,15	0.37	0	17,19,21	0.90	1 (5%)
5	NAG	H	2	5	14,14,15	0.24	0	17,19,21	0.47	0
5	FUC	H	3	5	10,10,11	1.13	0	14,14,16	1.49	4 (28%)

In the following table, the Chirals column lists the number of chiral outliers, the number of chiral centers analysed, the number of these observed in the model and the number defined in the Chemical Component Dictionary. Similar counts are reported in the Torsion and Rings columns. '-' means no outliers of that kind were identified.

Mol	Type	Chain	Res	Link	Chirals	Torsions	Rings
2	NAG	C	1	1,2	-	4/6/23/26	0/1/1/1

Continued on next page...

Continued from previous page...

Mol	Type	Chain	Res	Link	Chirals	Torsions	Rings
2	FUC	C	2	2	-	-	0/1/1/1
3	NAG	D	1	1,3	-	2/6/23/26	0/1/1/1
3	NAG	D	2	3	-	2/6/23/26	0/1/1/1
3	BMA	D	3	3	-	0/2/19/22	0/1/1/1
3	FUC	D	4	3	-	-	0/1/1/1
4	NAG	E	1	1,4	-	0/6/23/26	0/1/1/1
4	NAG	E	2	4	-	2/6/23/26	0/1/1/1
4	NAG	F	1	1,4	-	1/6/23/26	0/1/1/1
4	NAG	F	2	4	-	1/6/23/26	0/1/1/1
3	NAG	G	1	1,3	-	2/6/23/26	0/1/1/1
3	NAG	G	2	3	-	0/6/23/26	0/1/1/1
3	BMA	G	3	3	-	2/2/19/22	0/1/1/1
3	FUC	G	4	3	-	-	0/1/1/1
5	NAG	H	1	5,1	-	4/6/23/26	0/1/1/1
5	NAG	H	2	5	-	2/6/23/26	0/1/1/1
5	FUC	H	3	5	-	-	0/1/1/1

All (2) bond length outliers are listed below:

Mol	Chain	Res	Type	Atoms	Z	Observed(Å)	Ideal(Å)
2	C	2	FUC	C1-C2	2.91	1.58	1.52
3	D	4	FUC	C1-C2	2.33	1.57	1.52

The worst 5 of 8 bond angle outliers are listed below:

Mol	Chain	Res	Type	Atoms	Z	Observed(°)	Ideal(°)
2	C	2	FUC	O2-C2-C1	2.65	114.57	109.15
5	H	3	FUC	C1-O5-C5	2.62	118.71	112.78
5	H	1	NAG	C2-N2-C7	2.52	126.49	122.90
5	H	3	FUC	C1-C2-C3	2.47	112.70	109.67
3	D	2	NAG	C1-O5-C5	2.17	115.13	112.19

There are no chirality outliers.

5 of 22 torsion outliers are listed below:

Mol	Chain	Res	Type	Atoms
3	D	1	NAG	O5-C5-C6-O6
3	G	1	NAG	O5-C5-C6-O6
2	C	1	NAG	C4-C5-C6-O6
3	D	1	NAG	C4-C5-C6-O6

Continued on next page...

Continued from previous page...

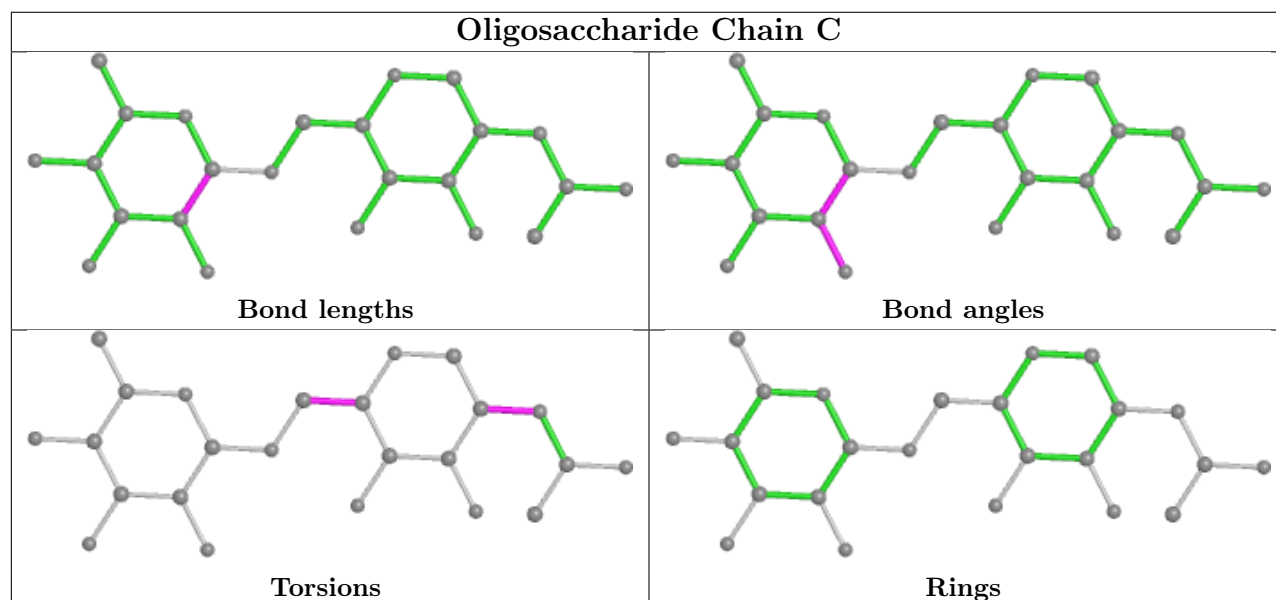
Mol	Chain	Res	Type	Atoms
3	D	2	NAG	O5-C5-C6-O6

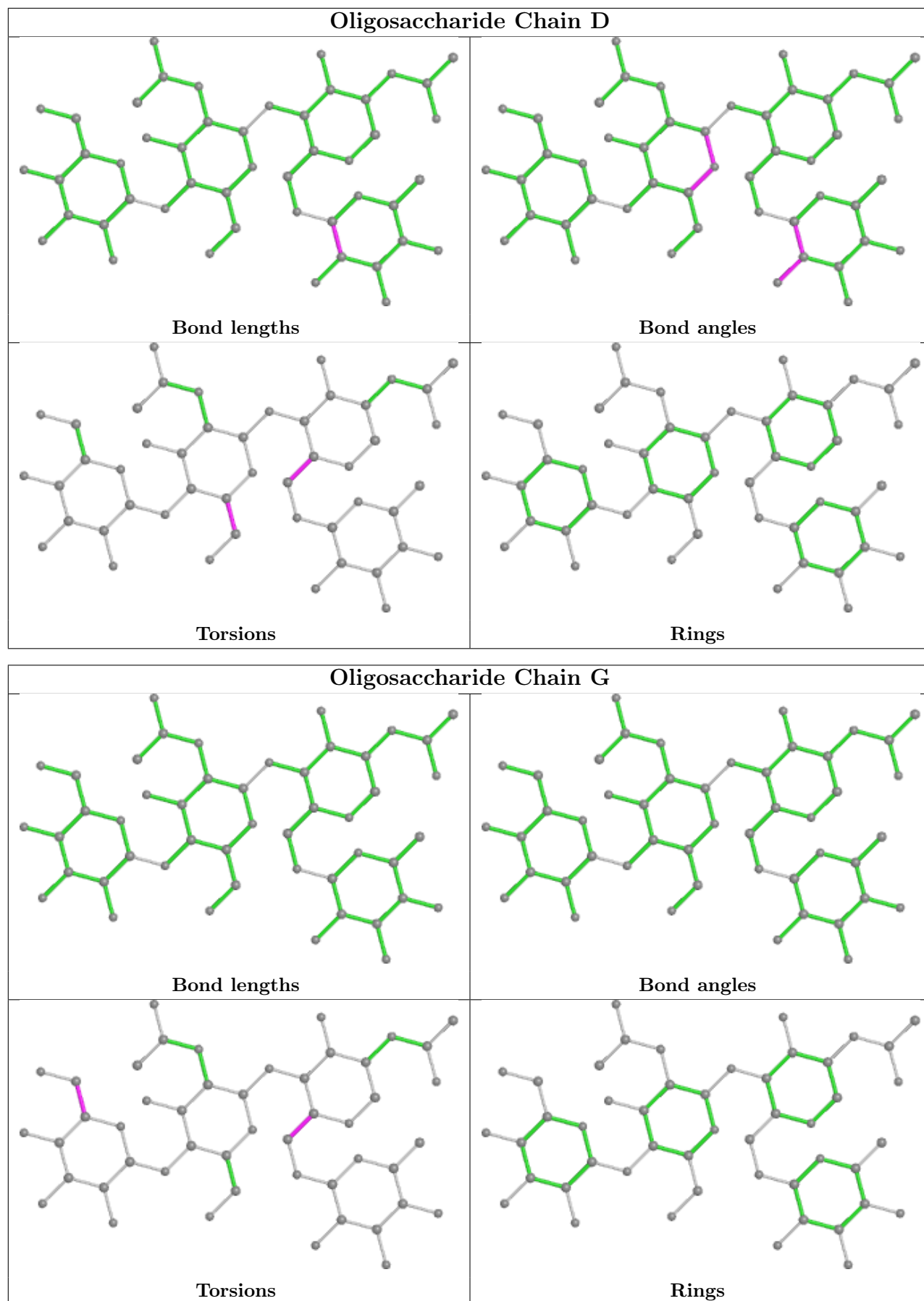
There are no ring outliers.

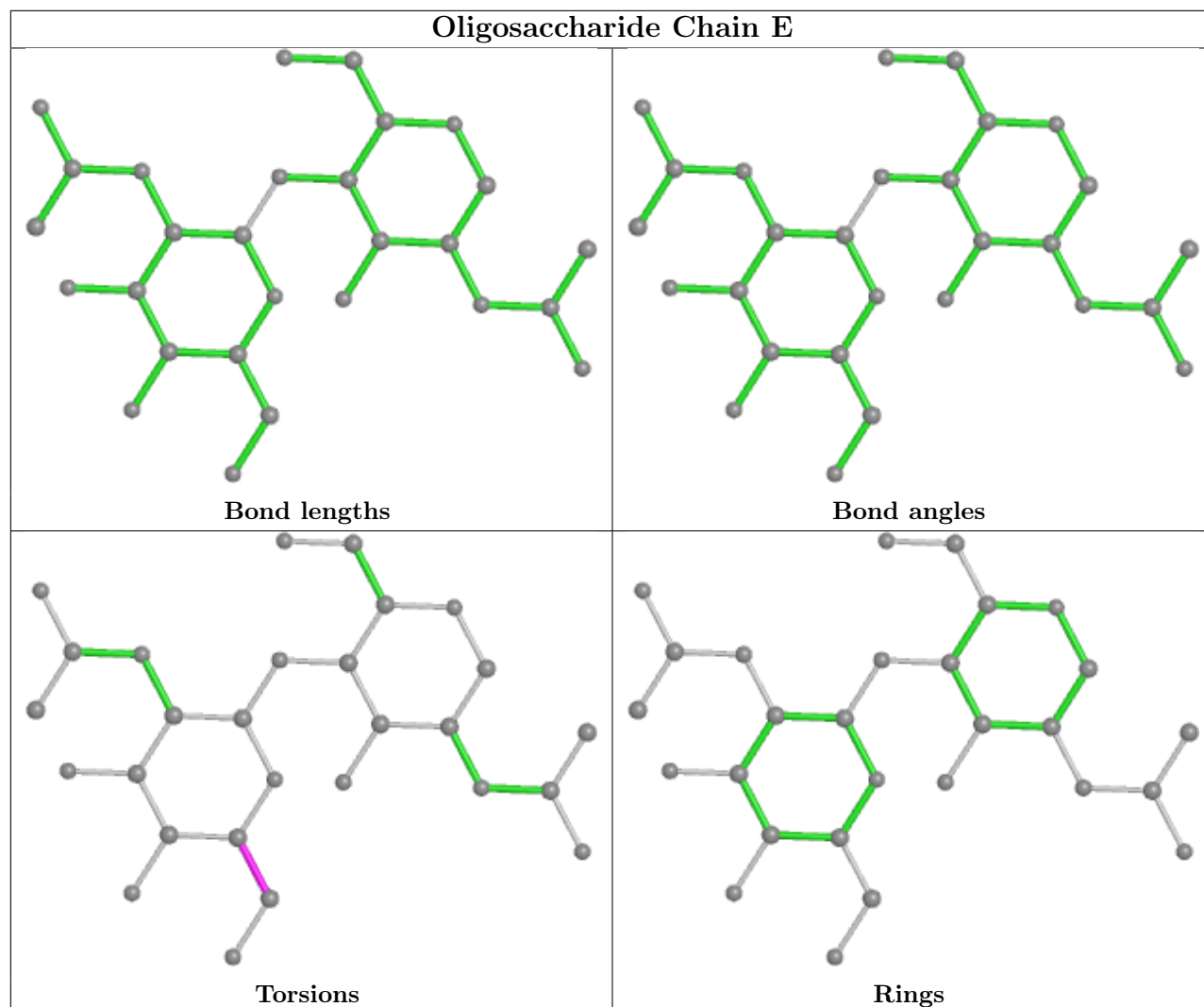
3 monomers are involved in 4 short contacts:

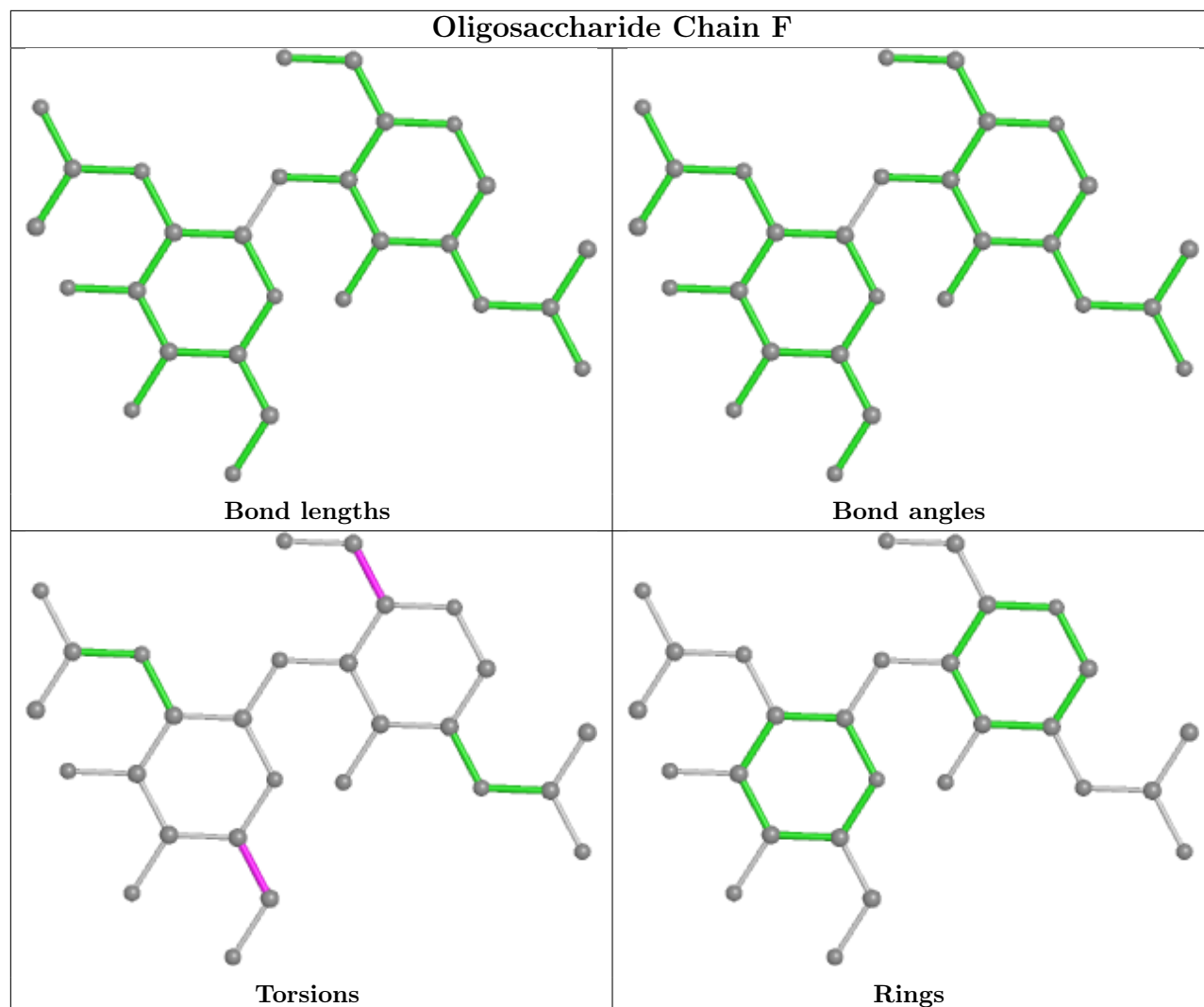
Mol	Chain	Res	Type	Clashes	Symm-Clashes
2	C	2	FUC	1	0
2	C	1	NAG	1	0
5	H	1	NAG	3	0

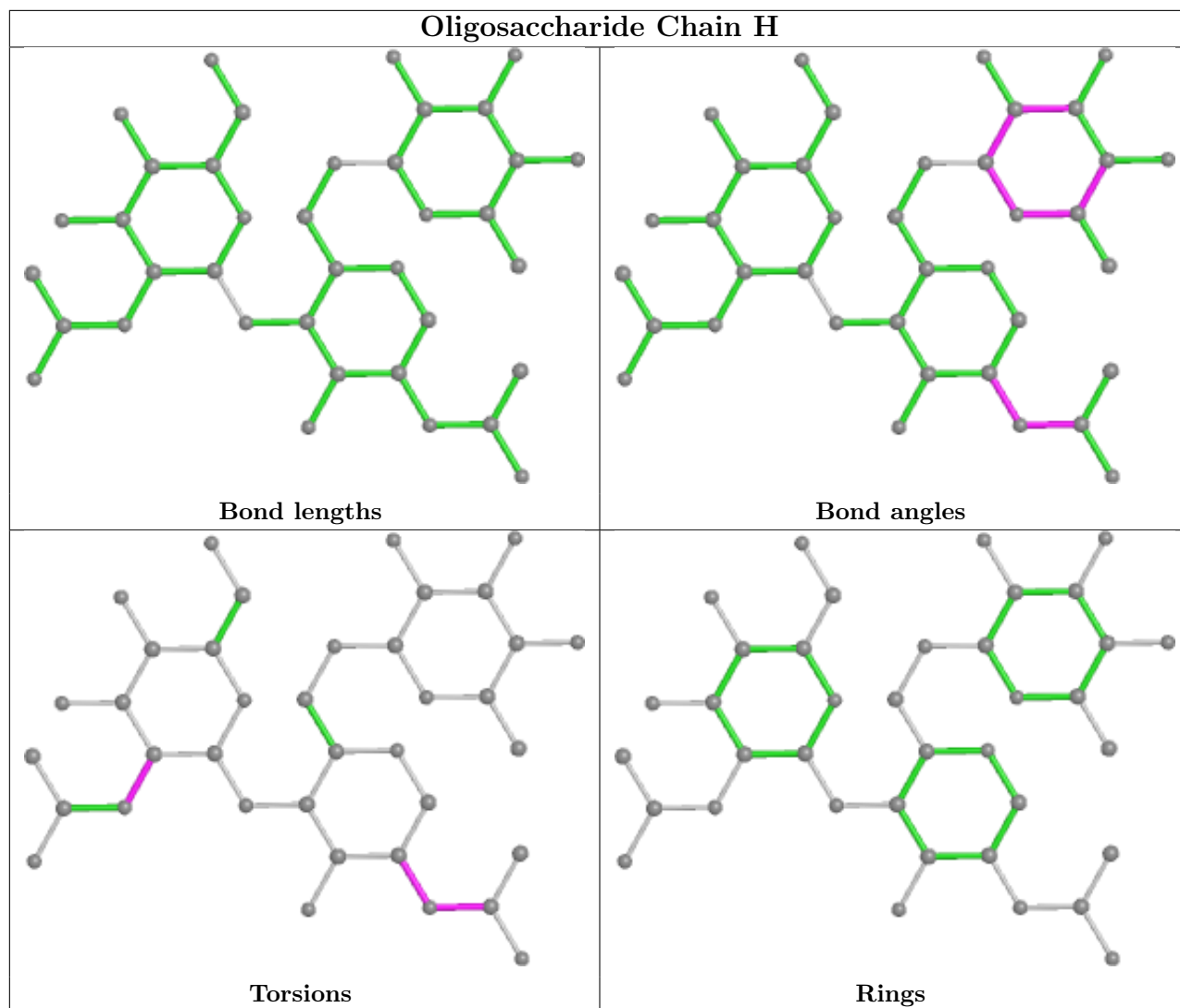
The following is a two-dimensional graphical depiction of Mogul quality analysis of bond lengths, bond angles, torsion angles, and ring geometry for oligosaccharide.











5.6 Ligand geometry [i](#)

Of 21 ligands modelled in this entry, 7 are monoatomic - leaving 14 for Mogul analysis.

In the following table, the Counts columns list the number of bonds (or angles) for which Mogul statistics could be retrieved, the number of bonds (or angles) that are observed in the model and the number of bonds (or angles) that are defined in the Chemical Component Dictionary. The Link column lists molecule types, if any, to which the group is linked. The Z score for a bond length (or angle) is the number of standard deviations the observed value is removed from the expected value. A bond length (or angle) with $|Z| > 2$ is considered an outlier worth inspection. RMSZ is the root-mean-square of all Z scores of the bond lengths (or angles).

Mol	Type	Chain	Res	Link	Bond lengths			Bond angles		
					Counts	RMSZ	$\# Z > 2$	Counts	RMSZ	$\# Z > 2$
14	PE8	B	721	-	24,24,24	0.52	0	23,23,23	0.42	0
12	EDO	B	720	-	3,3,3	0.52	0	2,2,2	0.12	0
9	PEG	B	713	-	6,6,6	0.44	0	5,5,5	0.36	0

Mol	Type	Chain	Res	Link	Bond lengths			Bond angles		
					Counts	RMSZ	# Z > 2	Counts	RMSZ	# Z > 2
12	EDO	B	717	-	3,3,3	0.49	0	2,2,2	0.21	0
7	D0W	B	711	6	38,39,39	2.26	7 (18%)	45,54,54	1.23	4 (8%)
12	EDO	B	718	-	3,3,3	0.49	0	2,2,2	0.30	0
9	PEG	B	714	-	6,6,6	0.47	0	5,5,5	0.41	0
9	PEG	A	712	-	6,6,6	0.47	0	5,5,5	0.39	0
7	D0W	A	710	6	38,39,39	2.19	7 (18%)	45,54,54	1.35	6 (13%)
13	ACT	A	716	-	3,3,3	1.38	1 (33%)	3,3,3	1.51	0
12	EDO	B	719	-	3,3,3	0.50	0	2,2,2	0.14	0
10	PG4	A	713	-	12,12,12	0.51	0	11,11,11	0.39	0
13	ACT	A	717	-	3,3,3	1.50	1 (33%)	3,3,3	1.41	0
12	EDO	A	715	-	3,3,3	0.53	0	2,2,2	0.19	0

In the following table, the Chirals column lists the number of chiral outliers, the number of chiral centers analysed, the number of these observed in the model and the number defined in the Chemical Component Dictionary. Similar counts are reported in the Torsion and Rings columns. '-' means no outliers of that kind were identified.

Mol	Type	Chain	Res	Link	Chirals	Torsions	Rings
14	PE8	B	721	-	-	14/22/22/22	-
12	EDO	B	720	-	-	1/1/1/1	-
9	PEG	B	713	-	-	1/4/4/4	-
12	EDO	B	717	-	-	1/1/1/1	-
7	D0W	B	711	6	-	12/44/53/53	0/2/2/2
12	EDO	B	718	-	-	0/1/1/1	-
9	PEG	B	714	-	-	1/4/4/4	-
9	PEG	A	712	-	-	3/4/4/4	-
7	D0W	A	710	6	-	8/44/53/53	0/2/2/2
12	EDO	B	719	-	-	1/1/1/1	-
10	PG4	A	713	-	-	7/10/10/10	-
12	EDO	A	715	-	-	1/1/1/1	-

The worst 5 of 16 bond length outliers are listed below:

Mol	Chain	Res	Type	Atoms	Z	Observed(Å)	Ideal(Å)
7	B	711	D0W	C20-C16	-6.97	1.39	1.54
7	A	710	D0W	C20-C16	-6.92	1.39	1.54
7	B	711	D0W	C10-N12	6.11	1.46	1.33
7	A	710	D0W	C10-N12	6.00	1.46	1.33
7	B	711	D0W	C21-N23	5.59	1.45	1.34

The worst 5 of 10 bond angle outliers are listed below:

Mol	Chain	Res	Type	Atoms	Z	Observed(°)	Ideal(°)
7	B	711	D0W	C33-C24-N23	-3.81	101.53	110.55
7	A	710	D0W	C20-C16-C17	3.30	106.46	102.35
7	A	710	D0W	O37-C36-C14	3.05	122.18	114.21
7	A	710	D0W	C05-C10-N12	3.01	122.61	116.54
7	A	710	D0W	O37-C36-O38	-2.93	117.44	124.09

There are no chirality outliers.

5 of 50 torsion outliers are listed below:

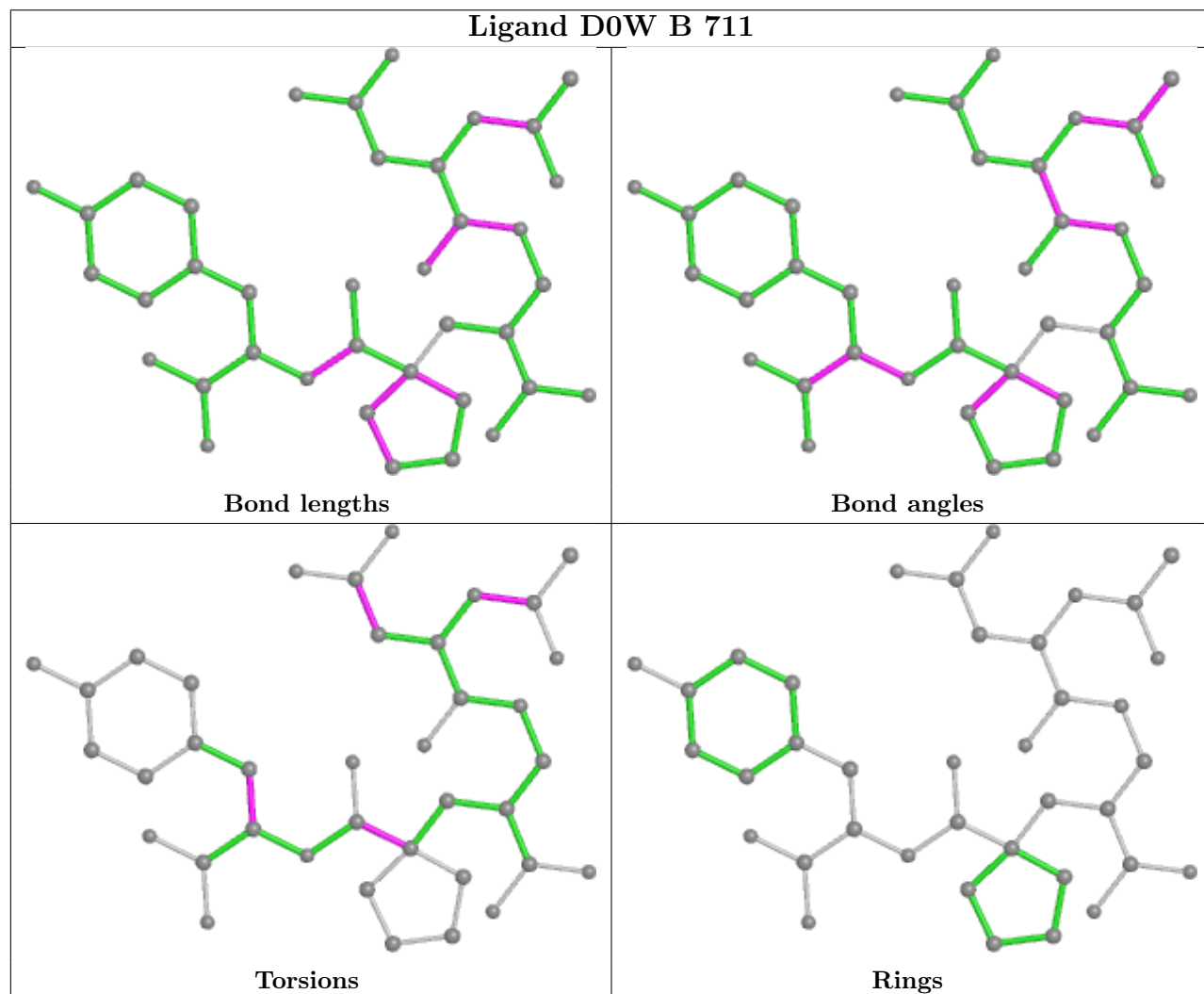
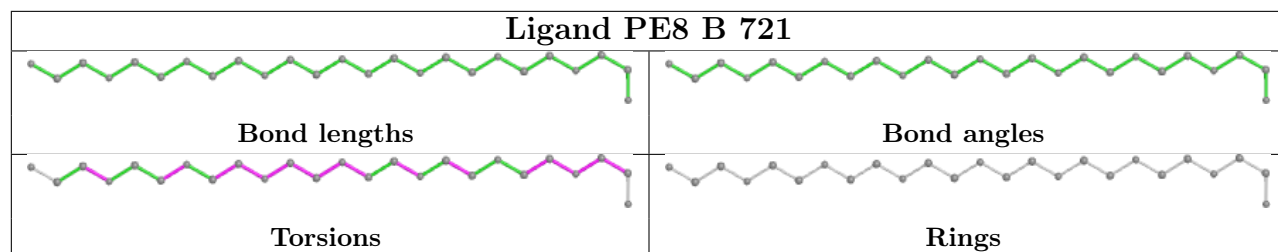
Mol	Chain	Res	Type	Atoms
7	A	710	D0W	C17-C16-C21-N23
7	A	710	D0W	C20-C16-C21-N23
7	A	710	D0W	C17-C16-C21-O22
7	B	711	D0W	C20-C16-C21-N23
7	B	711	D0W	C17-C16-C21-O22

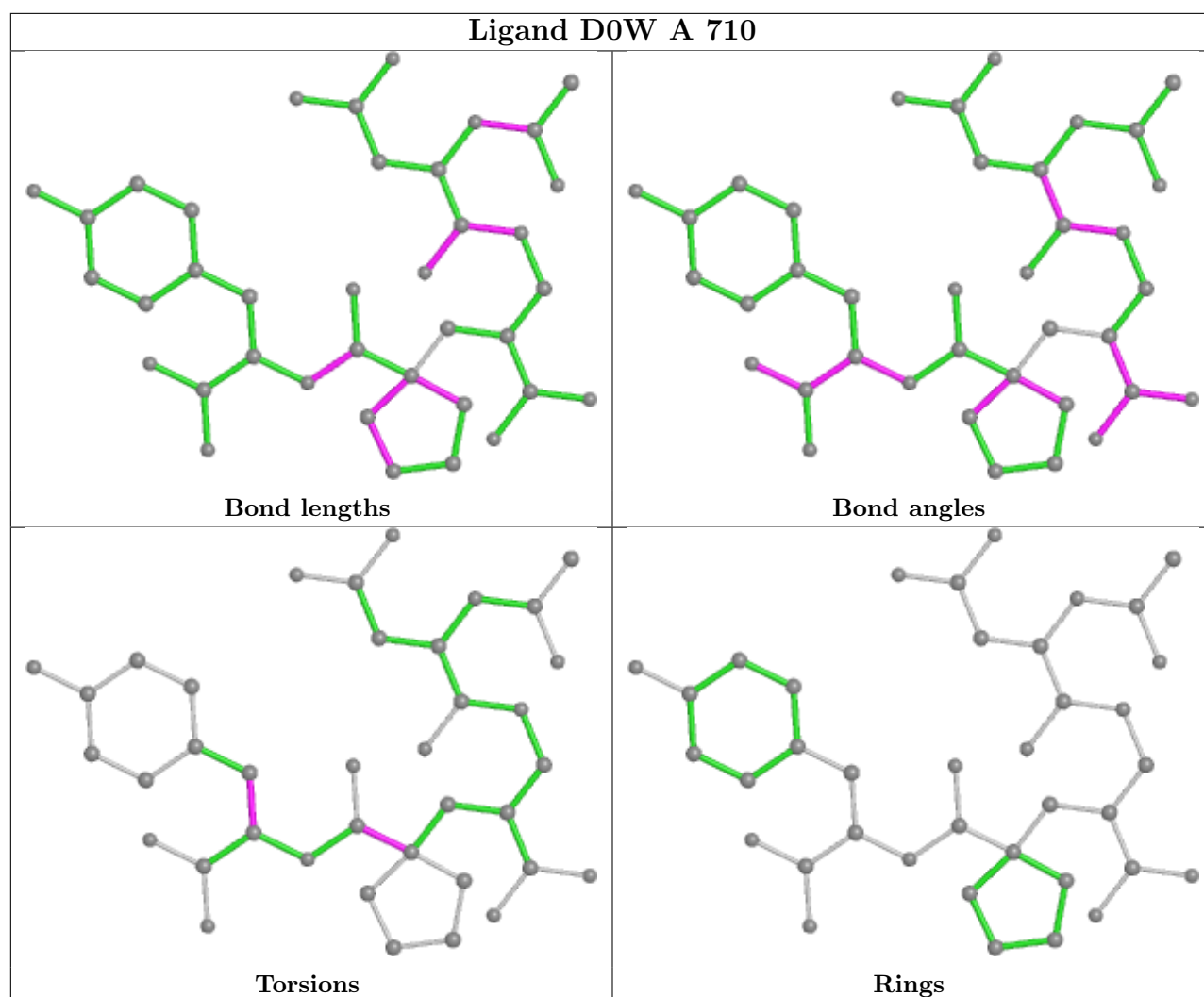
There are no ring outliers.

5 monomers are involved in 6 short contacts:

Mol	Chain	Res	Type	Clashes	Symm-Clashes
14	B	721	PE8	1	0
7	B	711	D0W	1	0
9	B	714	PEG	1	0
7	A	710	D0W	1	0
13	A	717	ACT	2	0

The following is a two-dimensional graphical depiction of Mogul quality analysis of bond lengths, bond angles, torsion angles, and ring geometry for all instances of the Ligand of Interest. In addition, ligands with molecular weight > 250 and outliers as shown on the validation Tables will also be included. For torsion angles, if less than 5% of the Mogul distribution of torsion angles is within 10 degrees of the torsion angle in question, then that torsion angle is considered an outlier. Any bond that is central to one or more torsion angles identified as an outlier by Mogul will be highlighted in the graph. For rings, the root-mean-square deviation (RMSD) between the ring in question and similar rings identified by Mogul is calculated over all ring torsion angles. If the average RMSD is greater than 60 degrees and the minimal RMSD between the ring in question and any Mogul-identified rings is also greater than 60 degrees, then that ring is considered an outlier. The outliers are highlighted in purple. The color gray indicates Mogul did not find sufficient equivalents in the CSD to analyse the geometry.





5.7 Other polymers [i](#)

There are no such residues in this entry.

5.8 Polymer linkage issues [i](#)

There are no chain breaks in this entry.

6 Fit of model and data [i](#)

6.1 Protein, DNA and RNA chains [i](#)

In the following table, the column labelled ‘#RSRZ > 2’ contains the number (and percentage) of RSRZ outliers, followed by percent RSRZ outliers for the chain as percentile scores relative to all X-ray entries and entries of similar resolution. The OWAB column contains the minimum, median, 95th percentile and maximum values of the occupancy-weighted average B-factor per residue. The column labelled ‘Q < 0.9’ lists the number of (and percentage) of residues with an average occupancy less than 0.9.

Mol	Chain	Analysed	<RSRZ>	#RSRZ>2	OWAB(Å ²)	Q<0.9
1	A	607/629 (96%)	0.38	30 (4%) 29 28	17, 37, 68, 106	0
1	B	604/629 (96%)	0.24	28 (4%) 32 31	17, 30, 53, 83	0
All	All	1211/1258 (96%)	0.31	58 (4%) 30 29	17, 32, 63, 106	0

The worst 5 of 58 RSRZ outliers are listed below:

Mol	Chain	Res	Type	RSRZ
1	A	325	GLY	8.6
1	A	413	ARG	5.8
1	B	325	GLY	5.8
1	A	1	LEU	5.4
1	A	609	GLU	5.4

6.2 Non-standard residues in protein, DNA, RNA chains [i](#)

There are no non-standard protein/DNA/RNA residues in this entry.

6.3 Carbohydrates [i](#)

In the following table, the Atoms column lists the number of modelled atoms in the group and the number defined in the chemical component dictionary. The B-factors column lists the minimum, median, 95th percentile and maximum values of B factors of atoms in the group. The column labelled ‘Q < 0.9’ lists the number of atoms with occupancy less than 0.9.

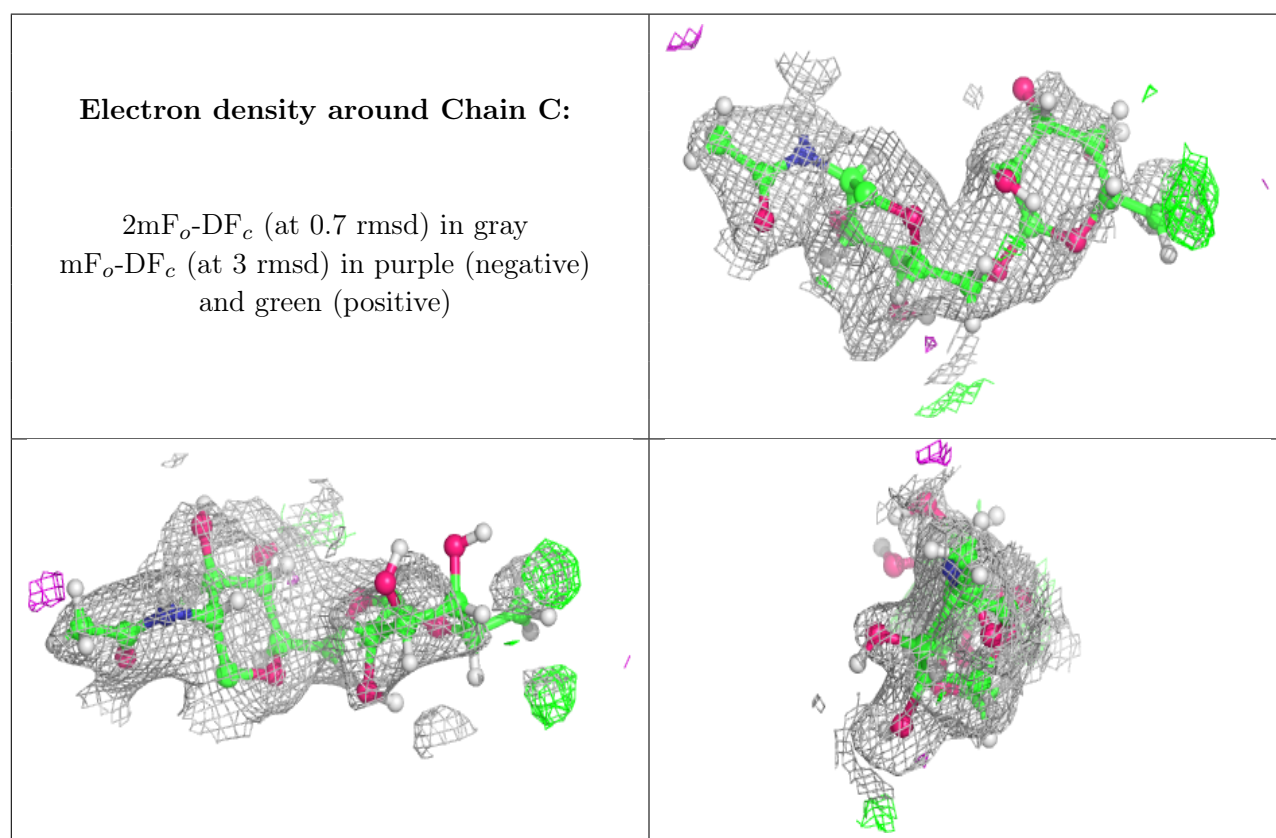
Mol	Type	Chain	Res	Atoms	RSCC	RSR	B-factors(Å ²)	Q<0.9
3	BMA	D	3	11/12	0.62	0.45	84,105,126,130	0
4	NAG	F	2	14/15	0.67	0.42	61,98,133,155	0
3	FUC	G	4	10/11	0.69	0.27	44,57,75,79	20
4	NAG	E	1	14/15	0.74	0.27	51,72,89,93	26
3	BMA	G	3	11/12	0.75	0.18	57,73,87,99	0

Continued on next page...

Continued from previous page...

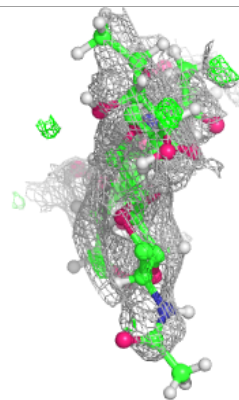
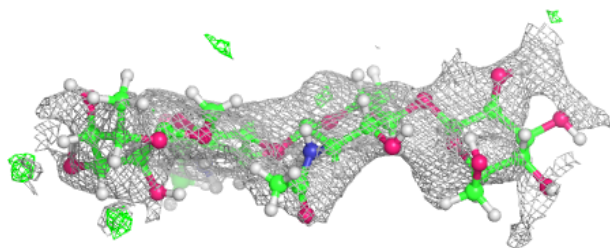
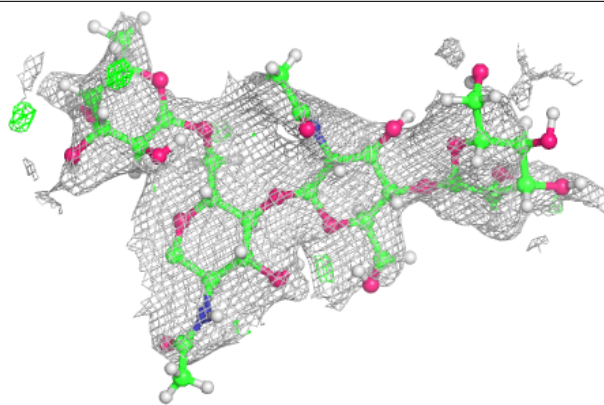
Mol	Type	Chain	Res	Atoms	RSCC	RSR	B-factors(\AA^2)	Q<0.9
5	NAG	H	2	14/15	0.75	0.19	47,67,84,94	27
2	FUC	C	2	10/11	0.76	0.24	56,70,84,97	0
4	NAG	E	2	14/15	0.76	0.25	74,90,124,133	0
3	NAG	D	2	14/15	0.80	0.34	68,85,99,109	0
3	FUC	D	4	10/11	0.80	0.35	60,77,93,99	0
4	NAG	F	1	14/15	0.82	0.31	47,63,83,89	0
5	FUC	H	3	10/11	0.84	0.15	48,73,102,108	0
3	NAG	D	1	14/15	0.88	0.25	50,69,83,88	0
5	NAG	H	1	14/15	0.89	0.13	32,45,66,69	0
2	NAG	C	1	14/15	0.91	0.11	35,53,73,88	0
3	NAG	G	1	14/15	0.92	0.12	33,46,60,63	0
3	NAG	G	2	14/15	0.93	0.16	32,51,58,61	0

The following is a graphical depiction of the model fit to experimental electron density for oligosaccharide. Each fit is shown from different orientation to approximate a three-dimensional view.



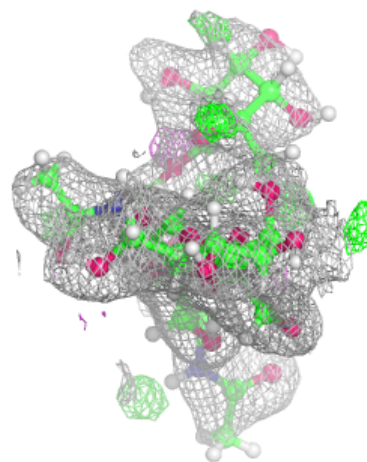
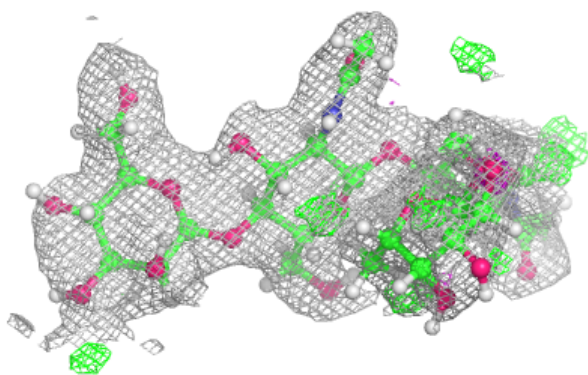
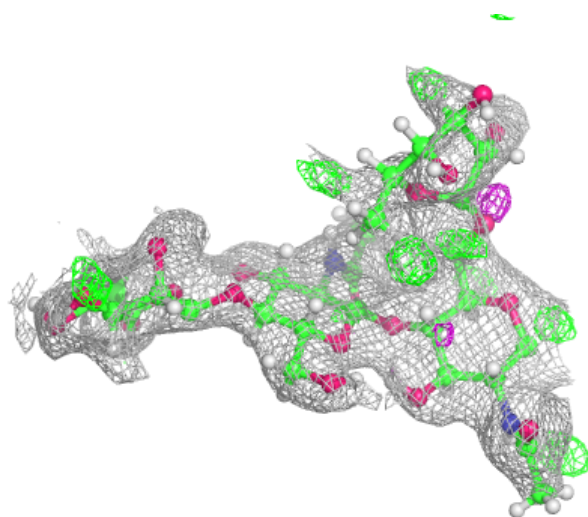
Electron density around Chain D:

$2mF_o-DF_c$ (at 0.7 rmsd) in gray
 mF_o-DF_c (at 3 rmsd) in purple (negative)
and green (positive)



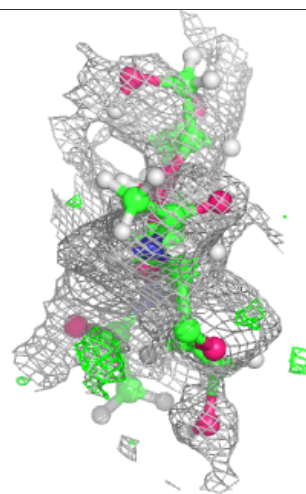
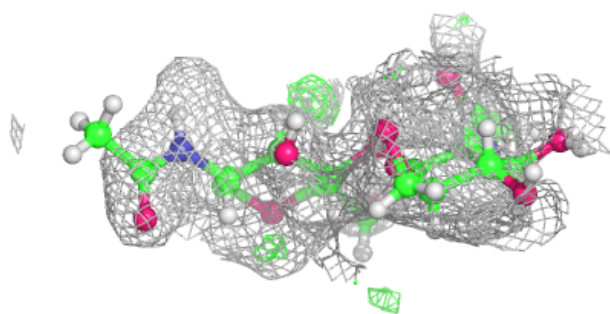
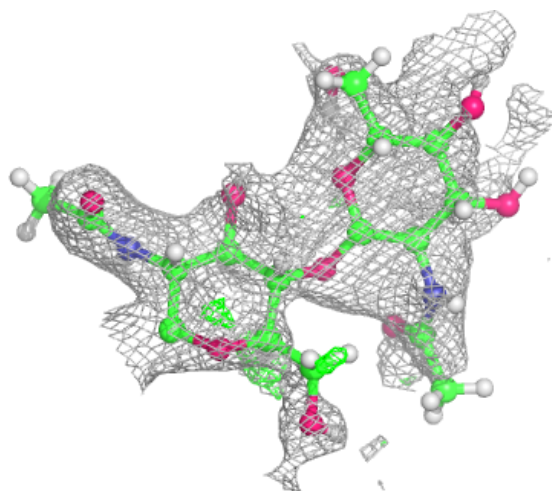
Electron density around Chain G:

$2mF_o-DF_c$ (at 0.7 rmsd) in gray
 mF_o-DF_c (at 3 rmsd) in purple (negative)
and green (positive)



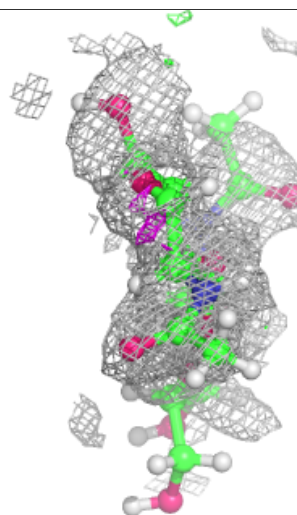
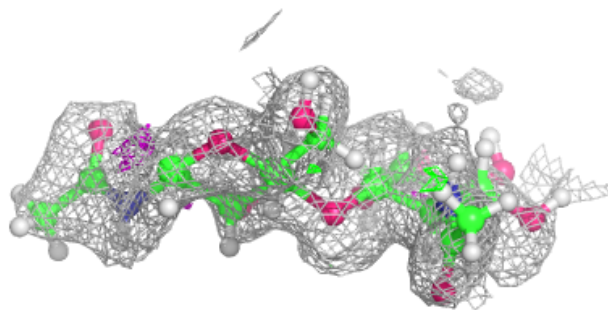
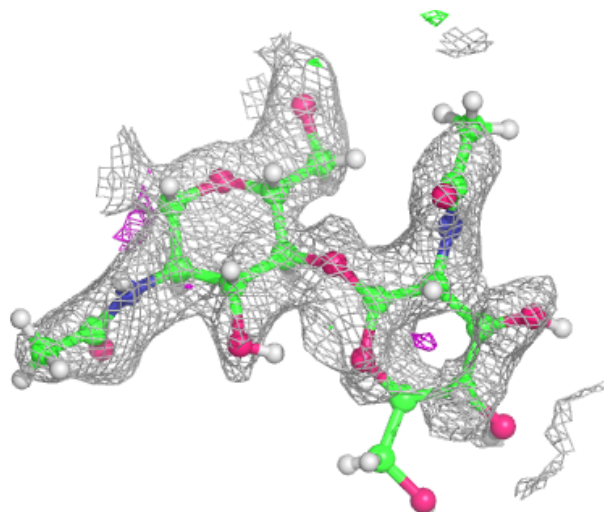
Electron density around Chain E:

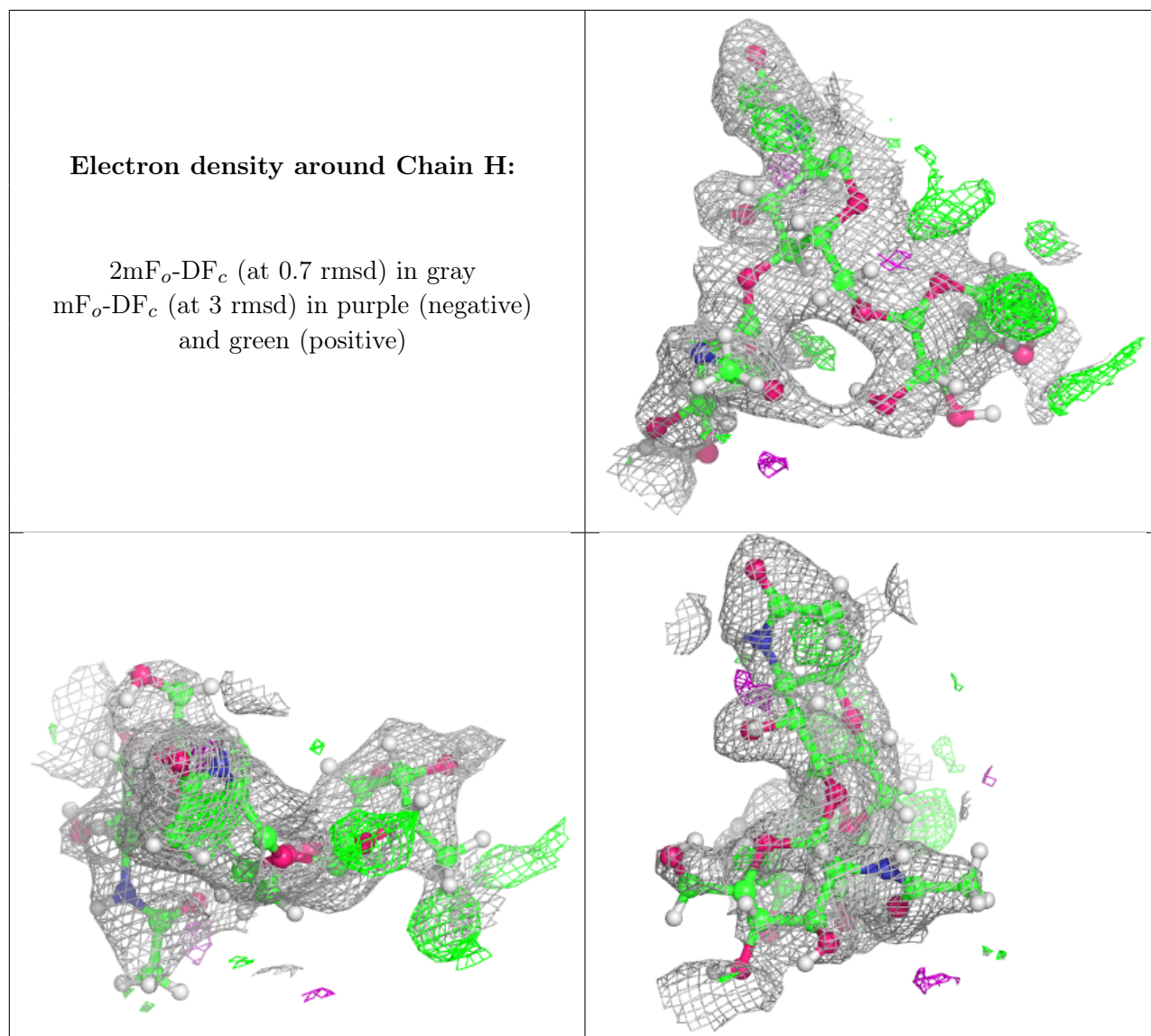
$2mF_o-DF_c$ (at 0.7 rmsd) in gray
 mF_o-DF_c (at 3 rmsd) in purple (negative)
and green (positive)



Electron density around Chain F:

$2mF_o-DF_c$ (at 0.7 rmsd) in gray
 mF_o-DF_c (at 3 rmsd) in purple (negative)
and green (positive)





6.4 Ligands [i](#)

In the following table, the Atoms column lists the number of modelled atoms in the group and the number defined in the chemical component dictionary. The B-factors column lists the minimum, median, 95th percentile and maximum values of B factors of atoms in the group. The column labelled 'Q< 0.9' lists the number of atoms with occupancy less than 0.9.

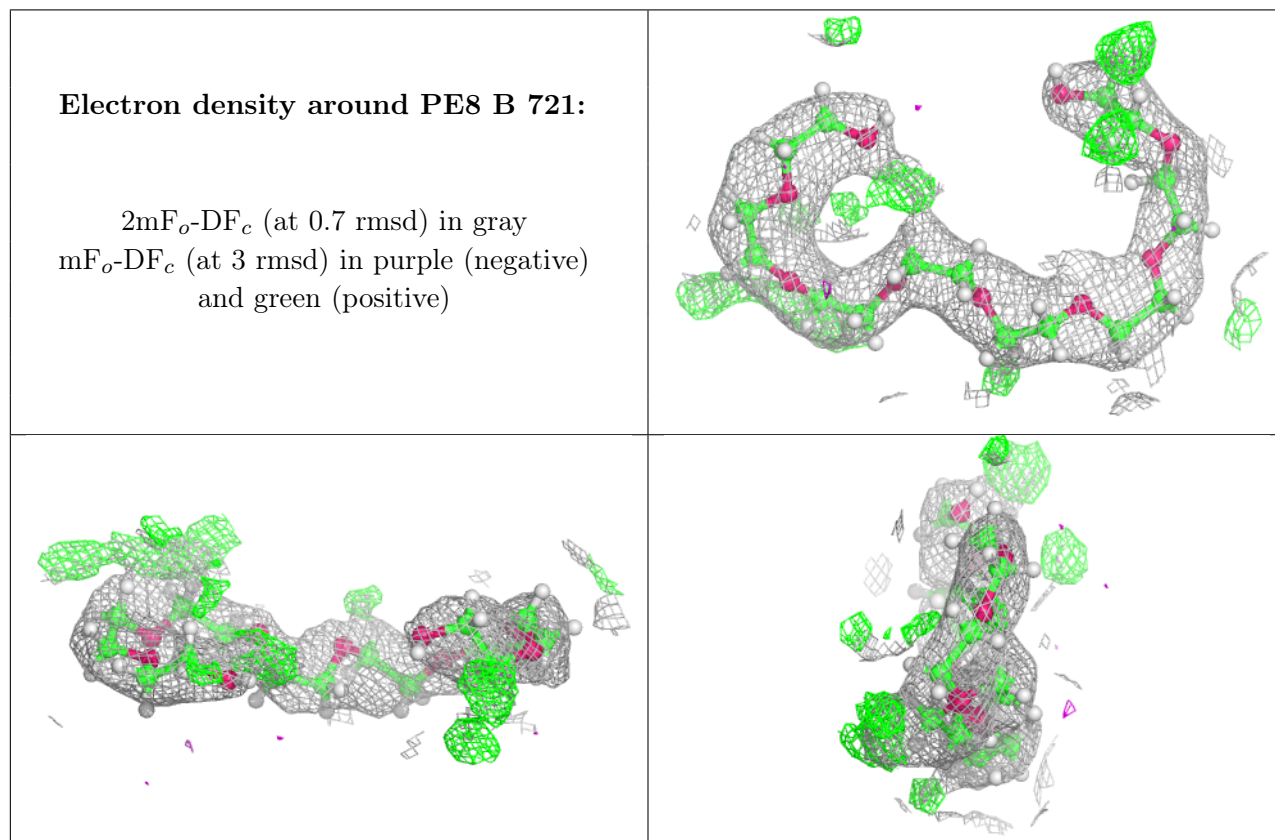
Mol	Type	Chain	Res	Atoms	RSCC	RSR	B-factors(Å ²)	Q<0.9
13	ACT	A	716	4/4	0.65	0.19	50,61,63,69	0
13	ACT	A	717	4/4	0.74	0.21	35,42,53,65	0
12	EDO	A	715	4/4	0.78	0.30	55,66,68,74	0
12	EDO	B	719	4/4	0.84	0.21	53,64,70,70	0
12	EDO	B	717	4/4	0.85	0.12	45,54,65,68	0
9	PEG	A	712	7/7	0.86	0.14	48,59,87,87	0

Continued on next page...

Continued from previous page...

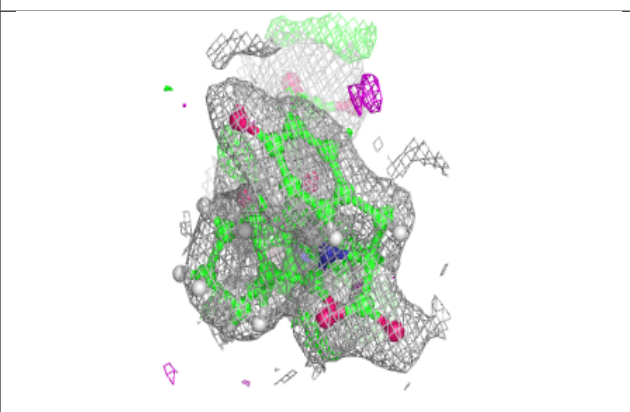
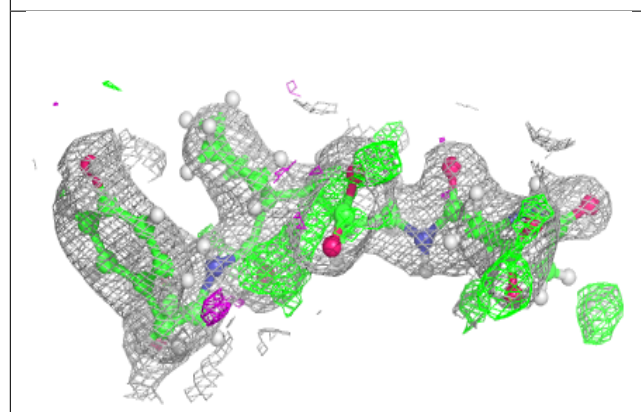
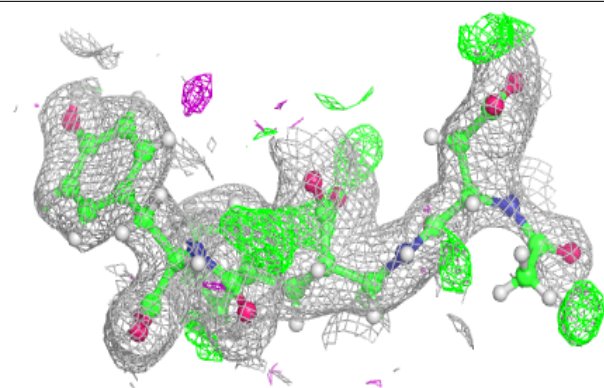
Mol	Type	Chain	Res	Atoms	RSCC	RSR	B-factors(\AA^2)	Q<0.9
9	PEG	B	714	7/7	0.87	0.35	37,59,71,76	0
12	EDO	B	720	4/4	0.88	0.27	52,62,71,71	0
14	PE8	B	721	25/25	0.89	0.12	38,54,67,69	0
12	EDO	B	718	4/4	0.90	0.12	41,50,60,61	0
10	PG4	A	713	13/13	0.90	0.14	33,51,70,71	0
9	PEG	B	713	7/7	0.92	0.10	35,46,60,67	0
7	D0W	B	711	38/38	0.93	0.13	20,32,66,79	0
11	MG	B	715	1/1	0.94	0.07	45,45,45,45	0
11	MG	B	716	1/1	0.94	0.14	43,43,43,43	0
7	D0W	A	710	38/38	0.96	0.11	17,27,65,85	0
6	ZN	B	710	1/1	0.97	0.14	28,28,28,28	0
8	CL	A	711	1/1	0.98	0.14	26,26,26,26	0
8	CL	B	712	1/1	0.99	0.17	24,24,24,24	0
11	MG	A	714	1/1	0.99	0.15	26,26,26,26	0
6	ZN	A	709	1/1	0.99	0.12	21,21,21,21	0

The following is a graphical depiction of the model fit to experimental electron density of all instances of the Ligand of Interest. In addition, ligands with molecular weight > 250 and outliers as shown on the geometry validation Tables will also be included. Each fit is shown from different orientation to approximate a three-dimensional view.

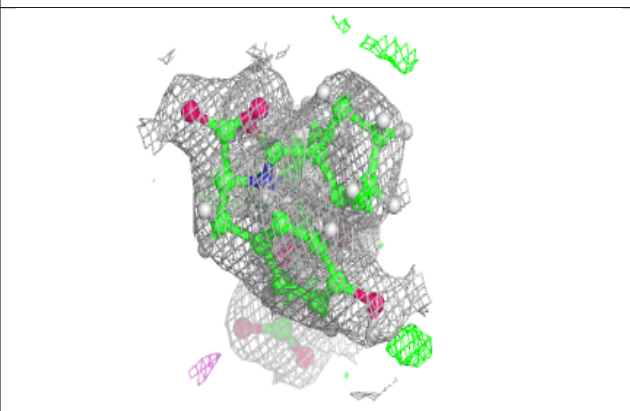
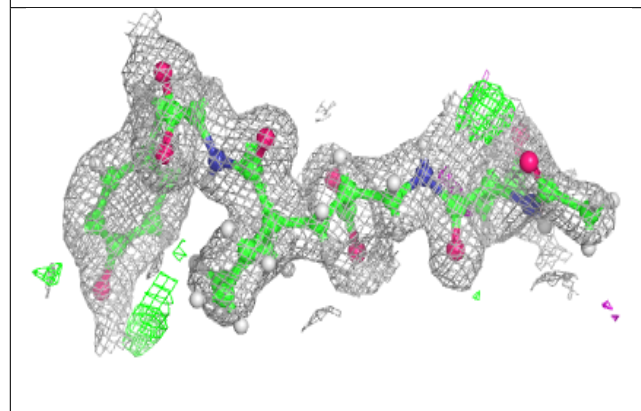
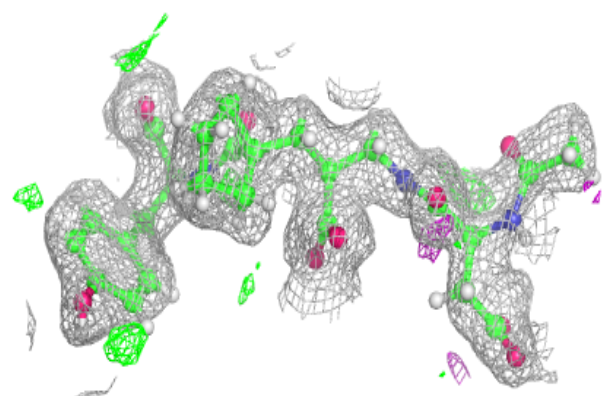


Electron density around D0W B 711:

$2mF_o-DF_c$ (at 0.7 rmsd) in gray
 mF_o-DF_c (at 3 rmsd) in purple (negative)
and green (positive)

**Electron density around D0W A 710:**

$2mF_o-DF_c$ (at 0.7 rmsd) in gray
 mF_o-DF_c (at 3 rmsd) in purple (negative)
and green (positive)



6.5 Other polymers [i](#)

There are no such residues in this entry.