



## Full wwPDB EM Validation Report ⓘ

Mar 4, 2024 – 02:14 PM EST

PDB ID : 8EZJ  
EMDB ID : EMD-28743  
Title : Cryo-EM structure of the *S. cerevisiae* Arf-like protein Arl1 bound to the Arf guanine nucleotide exchange factor Gea2  
Authors : Duan, H.D.; Li, H.  
Deposited on : 2022-11-01  
Resolution : 3.30 Å(reported)

This is a Full wwPDB EM Validation Report for a publicly released PDB entry.

We welcome your comments at [validation@mail.wwpdb.org](mailto:validation@mail.wwpdb.org)

A user guide is available at

<https://www.wwpdb.org/validation/2017/EMValidationReportHelp>

with specific help available everywhere you see the ⓘ symbol.

The types of validation reports are described at

<http://www.wwpdb.org/validation/2017/FAQs#types>.

---

The following versions of software and data (see [references ⓘ](#)) were used in the production of this report:

EMDB validation analysis : 0.0.1.dev70  
Mogul : 1.8.5 (274361), CSD as541be (2020)  
MolProbity : 4.02b-467  
buster-report : 1.1.7 (2018)  
Percentile statistics : 20191225.v01 (using entries in the PDB archive December 25th 2019)  
MapQ : 1.9.13  
Ideal geometry (proteins) : Engh & Huber (2001)  
Ideal geometry (DNA, RNA) : Parkinson et al. (1996)  
Validation Pipeline (wwPDB-VP) : 2.36

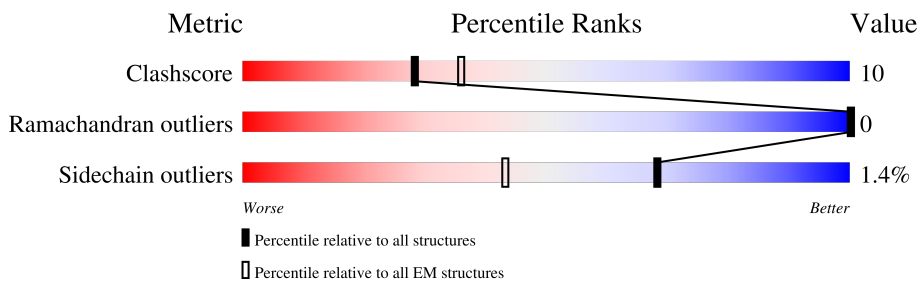
# 1 Overall quality at a glance i

The following experimental techniques were used to determine the structure:

*ELECTRON MICROSCOPY*

The reported resolution of this entry is 3.30 Å.

Percentile scores (ranging between 0-100) for global validation metrics of the entry are shown in the following graphic. The table shows the number of entries on which the scores are based.



Metric	Whole archive (#Entries)	EM structures (#Entries)
Clashscore	158937	4297
Ramachandran outliers	154571	4023
Sidechain outliers	154315	3826

The table below summarises the geometric issues observed across the polymeric chains and their fit to the map. The red, orange, yellow and green segments of the bar indicate the fraction of residues that contain outliers for  $\geq 3$ , 2, 1 and 0 types of geometric quality criteria respectively. A grey segment represents the fraction of residues that are not modelled. The numeric value for each fraction is indicated below the corresponding segment, with a dot representing fractions  $\leq 5\%$ . The upper red bar (where present) indicates the fraction of residues that have poor fit to the EM map (all-atom inclusion  $< 40\%$ ). The numeric value is given above the bar.

Mol	Chain	Length	Quality of chain
1	A	1483	 66% 21% 13%
1	B	1483	 66% 20% 14%
2	C	183	 62% 28% 10%
2	D	183	 63% 27% 10%

## 2 Entry composition i

There are 3 unique types of molecules in this entry. The entry contains 23215 atoms, of which 0 are hydrogens and 0 are deuteriums.

In the tables below, the AltConf column contains the number of residues with at least one atom in alternate conformation and the Trace column contains the number of residues modelled with at most 2 atoms.

- Molecule 1 is a protein called ARF guanine-nucleotide exchange factor 2.

Mol	Chain	Residues	Atoms					AltConf	Trace
			Total	C	N	O	S		
1	A	1285	Total	C	N	O	S	0	0
			10319	6622	1680	1980	37		
1	B	1276	Total	C	N	O	S	0	0
			10248	6578	1668	1965	37		

There are 48 discrepancies between the modelled and reference sequences:

Chain	Residue	Modelled	Actual	Comment	Reference
A	-23	MET	-	initiating methionine	UNP P39993
A	-22	HIS	-	expression tag	UNP P39993
A	-21	HIS	-	expression tag	UNP P39993
A	-20	HIS	-	expression tag	UNP P39993
A	-19	HIS	-	expression tag	UNP P39993
A	-18	HIS	-	expression tag	UNP P39993
A	-17	HIS	-	expression tag	UNP P39993
A	-16	SER	-	expression tag	UNP P39993
A	-15	SER	-	expression tag	UNP P39993
A	-14	GLY	-	expression tag	UNP P39993
A	-13	VAL	-	expression tag	UNP P39993
A	-12	ASP	-	expression tag	UNP P39993
A	-11	LEU	-	expression tag	UNP P39993
A	-10	GLY	-	expression tag	UNP P39993
A	-9	THR	-	expression tag	UNP P39993
A	-8	GLU	-	expression tag	UNP P39993
A	-7	ASN	-	expression tag	UNP P39993
A	-6	LEU	-	expression tag	UNP P39993
A	-5	TYR	-	expression tag	UNP P39993
A	-4	PHE	-	expression tag	UNP P39993
A	-3	GLN	-	expression tag	UNP P39993
A	-2	SER	-	expression tag	UNP P39993
A	-1	ASN	-	expression tag	UNP P39993
A	0	ALA	-	expression tag	UNP P39993
B	-23	MET	-	initiating methionine	UNP P39993
B	-22	HIS	-	expression tag	UNP P39993

*Continued on next page...*

*Continued from previous page...*

Chain	Residue	Modelled	Actual	Comment	Reference
B	-21	HIS	-	expression tag	UNP P39993
B	-20	HIS	-	expression tag	UNP P39993
B	-19	HIS	-	expression tag	UNP P39993
B	-18	HIS	-	expression tag	UNP P39993
B	-17	HIS	-	expression tag	UNP P39993
B	-16	SER	-	expression tag	UNP P39993
B	-15	SER	-	expression tag	UNP P39993
B	-14	GLY	-	expression tag	UNP P39993
B	-13	VAL	-	expression tag	UNP P39993
B	-12	ASP	-	expression tag	UNP P39993
B	-11	LEU	-	expression tag	UNP P39993
B	-10	GLY	-	expression tag	UNP P39993
B	-9	THR	-	expression tag	UNP P39993
B	-8	GLU	-	expression tag	UNP P39993
B	-7	ASN	-	expression tag	UNP P39993
B	-6	LEU	-	expression tag	UNP P39993
B	-5	TYR	-	expression tag	UNP P39993
B	-4	PHE	-	expression tag	UNP P39993
B	-3	GLN	-	expression tag	UNP P39993
B	-2	SER	-	expression tag	UNP P39993
B	-1	ASN	-	expression tag	UNP P39993
B	0	ALA	-	expression tag	UNP P39993

- Molecule 2 is a protein called ADP-ribosylation factor-like protein 1.

Mol	Chain	Residues	Atoms					AltConf	Trace
2	C	165	Total	C	N	O	S	0	0
			1292	824	211	254	3		
2	D	165	Total	C	N	O	S	0	0
			1292	824	211	254	3		

There are 36 discrepancies between the modelled and reference sequences:

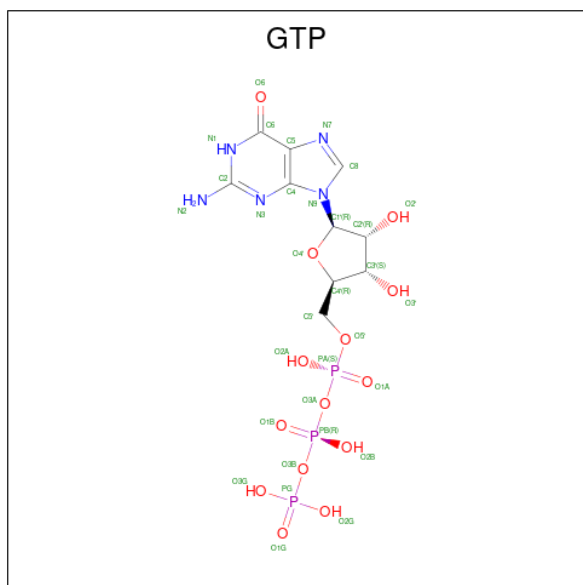
Chain	Residue	Modelled	Actual	Comment	Reference
C	72	LEU	GLN	engineered mutation	UNP P38116
C	184	ALA	-	expression tag	UNP P38116
C	185	GLY	-	expression tag	UNP P38116
C	186	GLU	-	expression tag	UNP P38116
C	187	ASN	-	expression tag	UNP P38116
C	188	LEU	-	expression tag	UNP P38116
C	189	TYR	-	expression tag	UNP P38116
C	190	PHE	-	expression tag	UNP P38116

*Continued on next page...*

*Continued from previous page...*

Chain	Residue	Modelled	Actual	Comment	Reference
C	191	GLN	-	expression tag	UNP P38116
C	192	SER	-	expression tag	UNP P38116
C	193	ALA	-	expression tag	UNP P38116
C	194	GLY	-	expression tag	UNP P38116
C	195	HIS	-	expression tag	UNP P38116
C	196	HIS	-	expression tag	UNP P38116
C	197	HIS	-	expression tag	UNP P38116
C	198	HIS	-	expression tag	UNP P38116
C	199	HIS	-	expression tag	UNP P38116
C	200	HIS	-	expression tag	UNP P38116
D	72	LEU	GLN	engineered mutation	UNP P38116
D	184	ALA	-	expression tag	UNP P38116
D	185	GLY	-	expression tag	UNP P38116
D	186	GLU	-	expression tag	UNP P38116
D	187	ASN	-	expression tag	UNP P38116
D	188	LEU	-	expression tag	UNP P38116
D	189	TYR	-	expression tag	UNP P38116
D	190	PHE	-	expression tag	UNP P38116
D	191	GLN	-	expression tag	UNP P38116
D	192	SER	-	expression tag	UNP P38116
D	193	ALA	-	expression tag	UNP P38116
D	194	GLY	-	expression tag	UNP P38116
D	195	HIS	-	expression tag	UNP P38116
D	196	HIS	-	expression tag	UNP P38116
D	197	HIS	-	expression tag	UNP P38116
D	198	HIS	-	expression tag	UNP P38116
D	199	HIS	-	expression tag	UNP P38116
D	200	HIS	-	expression tag	UNP P38116

- Molecule 3 is GUANOSINE-5'-TRIPHOSPHATE (three-letter code: GTP) (formula:  $C_{10}H_{16}N_5O_{14}P_3$ ) (labeled as "Ligand of Interest" by depositor).



Mol	Chain	Residues	Atoms					AltConf
			Total	C	N	O	P	
3	C	1	Total	C	N	O	P	0
			32	10	5	14	3	
3	D	1	Total	C	N	O	P	0
			32	10	5	14	3	



T1214	T1325	GLU
N1215	M1326	SER
E1217	M1327	ASN
F1218	M1328	ASP
	E1329	VAL
V1221	E1336	GLU
	G1337	ILE
	G1338	GLU
	L1339	ALA
M1231	L1340	THR
G1232	P1341	ALA
	L1342	PRO
		ILE
M1236		ASP
H1237	L1355	ASP
		ASP
I1239	M1238	ASN
I1240	I1359	THR
F1241	I1362	ASP
K1243	L1371	ASN
K1244	K1372	GLN
L1245	L1376	LYS
T1246	S1377	LYS
	M1378	LEU
I1252		SER
D1253		ASP
	F1381	ASP
I1269	L1382	VAL
Q1270		GLU
	F1388	PHE
E1277	M1389	LYS
D1278		ASP
	V1392	V7
R1283		T8
K1284		V9
H1285		D10
E1286		P11
		V12
		I16
A1295		K17
H1296		I20
Q1297		I20
C1298		R27
I1299		L149
M1300		S30
P1301		L153
C1302		M1415
		I1305
I1305		G1416
		S1417
SER		SER
HIS		HIS
GLY		GLY
SER		SER
ALA		ALA
HIS		HIS
GLU		GLU
GLN		GLN
THR		THR
PRO		PRO

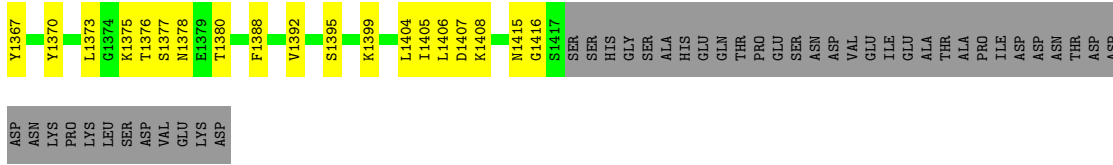
• Molecule 1: ARF guanine-nucleotide exchange factor 2

Chain B:

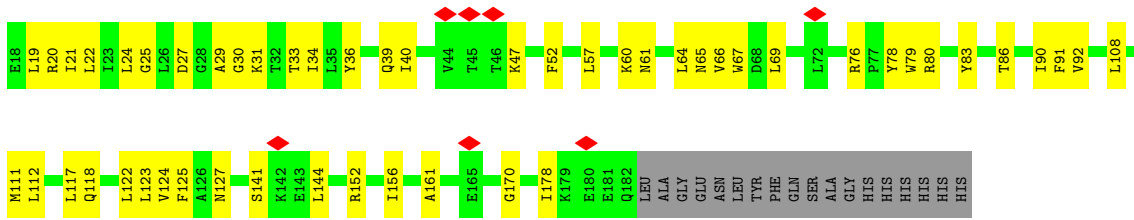


MET	SER	GLU
HIS	GLU	THR
HIS	PHE	THR
HIS	SER	THR
HIS	ASN	GLY
HIS	ASP	ASP
SER	GLY	ASP
SER	TYR	THR
GLY	VAL	VAL
VAL	ASP	ALA
ASP	PRO	ALA
LEU	L229	THR
GLY	K230	THR
THR	L231	PHE
THR	I232	ASN
GLN	I233	ASN
ASP	M236	GLU
ASP	Q239	LEU
ASP	S246	LEU
ASP	L252	ASN
ASP	T256	ALA
ASP	T259	SER
ASP	VAL	ILE
ASP	GLU	GLN
ASP	VAL	GLY
ASP	SER	GLY
ASP	L103	GLY
ASP	K124	GLN
ASP	T127	GLU
ASP	I139	ASP
ASP	L149	PRO
ASP	R153	ILE
ASP	L159	ILE
ASP	F171	SER
ASP	L172	GLY
ASP	R174	VAL
ASP	L184	ALA
ASP	I197	ALA
ASP	L198	LEU
ASP	Q140	LEU
ASP	L411	GLY
ASP	A321	GLU
ASP	Y227	HIS
ASP	L342	ILE
ASP	I343	HIS
ASP	L360	HIS
ASP	E361	HIS
ASP	L362	ILE
ASP	E368	ILE
ASP	I369	GLY
ASP	S370	GLY
ASP	Y377	GLY
ASP	L383	GLY
ASP	D386	GLU
ASP	P387	GLU
ASP	I388	GLU
ASP	F389	ALA
ASP	I392	ALA
ASP	L402	GLU
ASP	L409	GLY
ASP	L410	ILE
ASP	L411	GLU
ASP	F412	GLU
ASP	V416	HIS
ASP	I427	ILE
ASP	L438	HIS
ASP	L439	HIS
ASP	D440	HIS
ASP	ASP	GLU
ASP	THR	GLY
ASP	THR	THR
ASP	ALA	ALA
ASP	ASN	GLU
ASP	ASN	GLN
ASP	SER	LEU
ASP	SER	ASP
ASP	SER	ILE
ASP	GLU	VAL
ASP	ASN	GLN
ASP	ASN	LYS
ASP	LYS	THR
ASP	THR	THR
ASP	ARG	THR
ASP	SER	ARG
ASP	ASN	ASP
ASP	SER	ASN
ASP	ARG	SER
ASP	L462	ILE
ASP	L463	ILE
ASP	R472	GLY
ASP	S473	GLY
ASP	L488	SER
ASP	D492	LYS
ASP	F497	GLY
ASP	L498	GLY
ASP	K503	GLY
ASP	L504	GLY
ASP	S509	GLY
ASP	A510	GLY
ASP	T513	GLY
ASP	P518	GLY
ASP	P519	GLY
ASP	L522	GLY
ASP	V526	GLY
ASP	H736	GLY
ASP	K737	GLY
ASP	D738	GLY
ASP	F739	GLY
ASP	R746	GLY
ASP	C749	GLY
ASP	D753	GLY
ASP	I756	GLY
ASP	V757	GLY
ASP	H758	GLY
ASP	P759	GLY
ASP	W768	GLY
ASP	N774	GLY
ASP	S778	GLY
ASP	E785	GLY
ASP	LYS	GLY
ASP	LYS	GLY
ASP	ASP	GLY
ASP	THR	GLY
ASP	GLN	GLY
ASP	S792	GLY
ASP	D795	GLY
ASP	F810	GLY
ASP	K811	GLY
ASP	Q812	GLY
ASP	V813	GLY
ASP	I824	GLY
ASP	D830	GLY
ASP	I833	GLY
ASP	C844	GLY
ASP	F852	GLY
ASP	F853	GLY
ASP	K854	GLY
ASP	D855	GLY
ASP	N858	GLY
ASP	N862	GLY
ASP	S863	GLY
ASP	I864	GLY
ASP	T868	GLY
ASP	I871	GLY
ASP	ASN	GLY
ASP	SER	GLY
ASP	SER	GLY
ASP	HIS	GLY
ASP	ASP	GLY
ASP	ASP	GLY
ASP	K989	GLY
ASP	S996	GLY
ASP	A999	GLY
ASP	S1000	GLY
ASP	Y1001	GLY
ASP	E1011	GLY
ASP	E1012	GLY
ASP	I1023	GLY
ASP	K1024	GLY
ASP	S1025	GLY
ASP	I894	GLY
ASP	S1026	GLY
ASP	M1027	GLY
ASP	A1030	GLY
ASP	M1035	GLY
ASP	I1044	GLY
ASP	L1047	GLY
ASP	L1048	GLY
ASP	E1054	GLY
ASP	K1055	GLY
ASP	M1056	GLY
ASP	S1060	GLY
ASP	R1061	GLY
ASP	Y1062	GLY
ASP	F1063	GLY
ASP	E1064	GLY
ASP	I1071	GLY
ASP	E1072	GLY
ASP	L1073	GLY
ASP	T1074	GLY
ASP	F1080	GLY
ASP	C1081	GLY
ASP	K1082	GLY
ASP	L1087	GLY
ASP	I1091	GLY
ASP	V1095	GLY
ASP	L1098	GLY
ASP	D1209	GLY
ASP	S1210	GLY
ASP	N1211	GLY
ASP	I1212	GLY
ASP	L1213	GLY
ASP	F1218	GLY
ASP	I1228	GLY
ASP	M1231	GLY
ASP	E1236	GLY
ASP	H1237	GLY
ASP	E1241	GLY
ASP	K1244	GLY
ASP	L1245	GLY
ASP	E1277	GLY
ASP	I1290	GLY
ASP	A1295	GLY
ASP	H1296	GLY
ASP	I1299	GLY
ASP	C1302	GLY
ASP	F1308	GLY
ASP	T1316	GLY
ASP	K1320	GLY
ASP	E1332	GLY
ASP	E1336	GLY
ASP	L1339	GLY
ASP	L1340	GLY
ASP	F1341	GLY
ASP	L1342	GLY
ASP	L1343	GLY
ASP	T1348	GLY
ASP	Q1349	GLY
ASP	E1350	GLY
ASP	D1351	GLY
ASP	Q1352	GLY
ASP	I1356	GLY
ASP	S1357	GLY
ASP	S1358	GLY
ASP	I1362	GLY

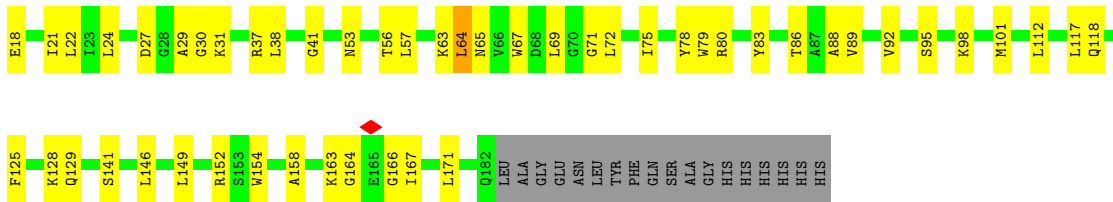




● Molecule 2: ADP-ribosylation factor-like protein 1



● Molecule 2: ADP-ribosylation factor-like protein 1



## 4 Experimental information

Property	Value	Source
EM reconstruction method	SINGLE PARTICLE	Depositor
Imposed symmetry	POINT, Not provided	
Number of particles used	712548	Depositor
Resolution determination method	FSC 0.143 CUT-OFF	Depositor
CTF correction method	PHASE FLIPPING AND AMPLITUDE CORRECTION	Depositor
Microscope	FEI TITAN KRIOS	Depositor
Voltage (kV)	300	Depositor
Electron dose ( $e^-/\text{\AA}^2$ )	69	Depositor
Minimum defocus (nm)	1300	Depositor
Maximum defocus (nm)	1700	Depositor
Magnification	Not provided	
Image detector	GATAN K3 (6k x 4k)	Depositor
Maximum map value	2.492	Depositor
Minimum map value	-0.067	Depositor
Average map value	0.001	Depositor
Map value standard deviation	0.019	Depositor
Recommended contour level	0.01	Depositor
Map size ( $\text{\AA}$ )	423.936, 423.936, 423.936	wwPDB
Map dimensions	512, 512, 512	wwPDB
Map angles ( $^\circ$ )	90.0, 90.0, 90.0	wwPDB
Pixel spacing ( $\text{\AA}$ )	0.828, 0.828, 0.828	Depositor

## 5 Model quality [i](#)

### 5.1 Standard geometry [i](#)

Bond lengths and bond angles in the following residue types are not validated in this section: GTP

The Z score for a bond length (or angle) is the number of standard deviations the observed value is removed from the expected value. A bond length (or angle) with  $|Z| > 5$  is considered an outlier worth inspection. RMSZ is the root-mean-square of all Z scores of the bond lengths (or angles).

Mol	Chain	Bond lengths		Bond angles	
		RMSZ	# Z  >5	RMSZ	# Z  >5
1	A	0.31	0/10493	0.45	0/14176
1	B	0.30	0/10419	0.45	0/14075
2	C	0.24	0/1311	0.46	0/1777
2	D	0.26	0/1311	0.48	0/1777
All	All	0.30	0/23534	0.45	0/31805

There are no bond length outliers.

There are no bond angle outliers.

There are no chirality outliers.

There are no planarity outliers.

### 5.2 Too-close contacts [i](#)

In the following table, the Non-H and H(model) columns list the number of non-hydrogen atoms and hydrogen atoms in the chain respectively. The H(added) column lists the number of hydrogen atoms added and optimized by MolProbity. The Clashes column lists the number of clashes within the asymmetric unit, whereas Symm-Clashes lists symmetry-related clashes.

Mol	Chain	Non-H	H(model)	H(added)	Clashes	Symm-Clashes
1	A	10319	0	10504	215	0
1	B	10248	0	10450	216	0
2	C	1292	0	1312	39	0
2	D	1292	0	1312	37	0
3	C	32	0	12	2	0
3	D	32	0	12	1	0
All	All	23215	0	23602	490	0

The all-atom clashscore is defined as the number of clashes found per 1000 atoms (including hydrogen atoms). The all-atom clashscore for this structure is 10.

All (490) close contacts within the same asymmetric unit are listed below, sorted by their clash magnitude.

Atom-1	Atom-2	Interatomic distance (Å)	Clash overlap (Å)
2:C:24:LEU:O	2:C:31:LYS:HD3	1.69	0.91
1:A:1214:THR:HG22	1:A:1215:ASN:H	1.42	0.83
1:A:1295:ALA:HB1	1:A:1342:LEU:HD22	1.60	0.81
1:B:343:ILE:HD13	1:B:360:LEU:HD23	1.62	0.81
1:B:774:ASN:HA	1:B:778:SER:OG	1.81	0.81
2:C:31:LYS:HE3	2:C:69:LEU:O	1.82	0.80
1:B:1295:ALA:HB1	1:B:1342:LEU:HD22	1.65	0.79
1:B:1348:THR:HB	1:B:1352:GLN:HG3	1.66	0.78
1:A:1213:LEU:HD11	1:A:1218:PHE:CE2	2.19	0.77
2:C:127:ASN:HD21	2:C:161:ALA:HB2	1.50	0.76
1:A:644:ILE:O	1:A:647:THR:HG22	1.86	0.76
1:B:774:ASN:O	1:B:778:SER:HB2	1.86	0.76
1:A:1214:THR:HG22	1:A:1215:ASN:N	1.99	0.76
1:B:219:ILE:O	1:B:222:THR:HG22	1.85	0.75
2:C:30:GLY:HA2	3:C:301:GTP:H5''	1.68	0.73
1:A:1302:CYS:HB3	1:A:1305:ILE:HB	1.70	0.73
2:C:24:LEU:C	2:C:31:LYS:HD3	2.10	0.71
1:B:1339:LEU:O	1:B:1343:LEU:N	2.22	0.71
1:A:643:ARG:NH2	1:A:750:SER:O	2.24	0.71
1:B:581:LEU:HB3	1:B:587:ILE:HD13	1.74	0.69
2:C:141:SER:HB3	2:C:156:ILE:HD13	1.76	0.68
1:B:1091:ILE:HG22	1:B:1119:LEU:HD21	1.75	0.68
2:D:149:LEU:HD23	2:D:154:TRP:HB2	1.77	0.67
1:A:15:ILE:HD11	1:A:130:ILE:HG21	1.76	0.67
1:B:1348:THR:HG22	1:B:1349:GLN:N	2.09	0.67
1:B:862:ASN:OD1	1:B:945:ASN:ND2	2.29	0.66
1:B:1082:LYS:NZ	1:B:1122:LEU:O	2.28	0.66
1:B:1276:LEU:HB2	1:B:1290:ILE:HG21	1.78	0.66
1:B:929:ILE:O	1:B:932:ASN:ND2	2.29	0.66
1:B:343:ILE:HG13	1:B:343:ILE:O	1.96	0.66
1:A:409:LEU:HD11	1:A:462:LEU:HD23	1.79	0.65
1:B:343:ILE:CD1	1:B:360:LEU:HD23	2.25	0.65
2:C:108:LEU:HD21	2:C:144:LEU:HD22	1.76	0.65
2:C:117:LEU:O	2:C:152:ARG:NH1	2.29	0.65
1:A:914:ARG:NH1	1:A:1011:GLU:OE1	2.29	0.65
2:D:71:GLY:HA2	2:D:79:TRP:HZ2	1.62	0.64
1:A:838:ILE:HG23	1:A:924:VAL:HG11	1.78	0.64
1:A:1214:THR:CG2	1:A:1215:ASN:H	2.10	0.64
1:A:1106:LYS:HG3	1:A:1144:ILE:HG23	1.77	0.64
1:A:1325:THR:HG23	1:A:1328:MET:H	1.62	0.64

*Continued on next page...*

*Continued from previous page...*

Atom-1	Atom-2	Interatomic distance (Å)	Clash overlap (Å)
1:A:1113:LEU:HD22	1:A:1145:PHE:CZ	2.33	0.64
2:C:91:PHE:HB3	2:C:124:VAL:HG12	1.80	0.64
1:B:1044:ILE:HD12	1:B:1087:LEU:HD21	1.80	0.63
1:A:825:TYR:OH	1:A:838:ILE:HD11	1.98	0.63
1:B:864:ILE:O	1:B:868:THR:HG23	1.98	0.63
1:A:1071:ILE:HD12	1:A:1095:VAL:HG22	1.80	0.63
1:A:539:ILE:HG21	1:A:803:LEU:HD12	1.81	0.63
1:B:1111:ARG:NH2	1:B:1115:TYR:OH	2.28	0.63
1:A:468:ILE:HD13	1:B:20:ILE:HD13	1.79	0.63
1:A:1232:GLY:O	1:A:1236:ASN:ND2	2.32	0.62
1:B:7:VAL:HG12	1:B:8:THR:HG23	1.80	0.62
1:B:488:LEU:O	1:B:605:ARG:NH1	2.31	0.62
1:A:891:LEU:HD13	1:A:906:SER:HB3	1.81	0.62
1:A:618:PRO:HB3	1:A:660:ARG:NH1	2.15	0.62
2:D:117:LEU:O	2:D:152:ARG:NH1	2.29	0.62
1:A:1213:LEU:HD11	1:A:1218:PHE:CD2	2.34	0.62
2:C:60:LYS:NZ	2:C:61:ASN:OD1	2.33	0.62
1:A:11:PRO:HB3	1:A:130:ILE:HG23	1.82	0.62
1:A:336:LEU:HD12	1:A:380:LEU:HD22	1.81	0.62
1:A:838:ILE:CD1	1:A:920:LEU:HB3	2.30	0.62
1:A:838:ILE:HD13	1:A:920:LEU:HB3	1.82	0.61
1:B:1332:GLU:N	1:B:1332:GLU:OE1	2.31	0.61
2:D:18:GLU:N	2:D:63:LYS:O	2.32	0.61
1:A:129:ASN:OD1	1:A:132:ASN:ND2	2.33	0.61
1:B:897:GLU:O	1:B:989:LYS:NZ	2.30	0.61
1:B:734:CYS:SG	1:B:735:ASN:N	2.74	0.61
1:B:757:VAL:HG11	1:B:778:SER:HB3	1.81	0.61
1:B:1332:GLU:HG3	1:B:1380:THR:OG1	1.99	0.61
1:A:825:TYR:CZ	1:A:838:ILE:HD11	2.37	0.60
2:D:95:SER:HB2	2:D:128:LYS:HB2	1.83	0.60
1:A:1299:ILE:HD11	1:A:1342:LEU:HD11	1.83	0.60
1:A:1232:GLY:HA3	1:A:1300:ASN:HD21	1.66	0.60
1:A:424:GLN:OE1	1:A:490:ARG:NH1	2.30	0.59
1:A:930:ARG:O	1:A:1035:ASN:ND2	2.35	0.59
1:B:608:LYS:HG3	1:B:759:PRO:HB2	1.83	0.59
1:B:386:ASP:HB3	1:B:387:PRO:HD3	1.85	0.59
1:B:1172:ARG:NH2	1:B:1210:SER:OG	2.35	0.59
1:B:1071:ILE:HD12	1:B:1095:VAL:HG22	1.83	0.59
1:B:690:THR:HG23	1:B:691:VAL:HG23	1.84	0.59
1:B:898:ASP:OD1	1:B:899:THR:N	2.36	0.59
1:B:153:ARG:NH1	1:B:256:THR:O	2.36	0.59

*Continued on next page...*

*Continued from previous page...*

Atom-1	Atom-2	Interatomic distance (Å)	Clash overlap (Å)
1:B:580:MET:HA	1:B:583:GLU:HG2	1.84	0.59
1:A:849:ALA:HA	1:A:937:ILE:HD13	1.85	0.59
1:B:402:LEU:HD21	1:B:457:ILE:CG2	2.33	0.58
1:B:686:ASP:OD1	1:B:746:ARG:NH1	2.36	0.58
2:D:31:LYS:NZ	2:D:69:LEU:O	2.33	0.58
1:A:246:SER:HB3	1:A:753:ASP:HB3	1.85	0.58
1:A:386:ASP:HB3	1:A:387:PRO:HD3	1.86	0.58
1:A:870:LEU:HD13	1:A:953:LEU:HD21	1.84	0.58
1:B:906:SER:H	1:B:909:ALA:HB3	1.68	0.58
1:B:1377:SER:OG	1:B:1378:ASN:N	2.37	0.58
1:A:401:LYS:NZ	1:A:403:SER:OG	2.37	0.57
1:A:1238:TRP:HH2	1:A:1252:ILE:HG12	1.69	0.57
1:A:492:ASP:O	1:A:496:ASN:ND2	2.37	0.57
1:A:852:ASP:OD2	1:A:936:LYS:NZ	2.37	0.57
1:A:864:ILE:O	1:A:868:THR:HG23	2.05	0.57
1:A:1277:GLU:HG2	1:A:1278:ASP:H	1.69	0.57
1:B:1147:GLN:NE2	1:B:1191:MET:O	2.36	0.57
1:B:693:PRO:HB2	1:B:698:VAL:HG13	1.86	0.57
2:C:25:GLY:O	2:C:31:LYS:NZ	2.33	0.57
1:A:489:ASP:OD1	1:A:602:ASN:ND2	2.34	0.57
1:A:110:ILE:CG2	1:A:114:ILE:HB	2.35	0.56
1:A:676:ASP:O	1:A:692:GLN:NE2	2.33	0.56
1:A:11:PRO:HB3	1:A:130:ILE:HD12	1.86	0.56
1:A:618:PRO:HB3	1:A:660:ARG:HH12	1.71	0.56
2:C:112:LEU:HD11	2:C:122:LEU:HD22	1.87	0.56
1:B:96:THR:O	2:C:78:TYR:OH	2.22	0.56
1:B:774:ASN:O	1:B:778:SER:CB	2.53	0.56
1:A:1245:LEU:HD23	1:A:1252:ILE:HB	1.88	0.56
1:A:10:ASP:N	1:A:10:ASP:OD1	2.38	0.56
1:B:893:GLN:NE2	1:B:902:GLU:OE1	2.39	0.56
1:A:368:GLU:HA	1:B:9:VAL:HG21	1.87	0.55
1:A:468:ILE:HD11	1:B:16:ILE:HG22	1.88	0.55
1:A:510:ALA:HB2	1:A:518:PRO:HG2	1.88	0.55
1:A:825:TYR:CE1	1:A:838:ILE:HD11	2.41	0.55
2:D:21:ILE:HG13	2:D:88:ALA:HB3	1.88	0.55
1:A:489:ASP:HB3	1:A:604:ASN:HB2	1.87	0.55
2:D:29:ALA:HB1	2:D:92:VAL:HG12	1.88	0.55
2:D:125:PHE:HE2	2:D:167:ILE:HA	1.70	0.55
1:A:72:PHE:HB3	1:A:104:ILE:HD11	1.87	0.55
1:B:510:ALA:HB2	1:B:518:PRO:HG2	1.87	0.55
1:B:1343:LEU:HD12	1:B:1356:ILE:HD12	1.89	0.55

*Continued on next page...*

*Continued from previous page...*

Atom-1	Atom-2	Interatomic distance (Å)	Clash overlap (Å)
2:C:39:GLN:HG3	2:C:40:ILE:HG23	1.87	0.55
1:A:1072:GLU:OE1	1:A:1115:TYR:OH	2.24	0.55
1:B:198:LEU:HD21	1:B:342:LEU:HD11	1.88	0.55
1:B:492:ASP:OD1	1:B:560:LYS:NZ	2.37	0.55
1:B:597:GLU:OE2	1:B:601:ASN:ND2	2.40	0.55
1:B:1395:SER:OG	1:B:1399:LYS:NZ	2.40	0.55
1:B:409:LEU:HD11	1:B:462:LEU:HD23	1.89	0.55
1:A:149:LEU:HD21	1:A:172:LEU:HD23	1.89	0.55
1:B:1056:ASN:O	1:B:1060:SER:OG	2.20	0.55
2:C:57:LEU:O	2:C:64:LEU:N	2.34	0.55
1:A:800:LEU:O	1:A:804:ASN:ND2	2.33	0.54
1:A:612:GLY:HA2	1:A:649:PHE:CE1	2.43	0.54
1:B:230:LYS:HD2	1:B:370:SER:HA	1.90	0.54
1:B:792:SER:N	1:B:795:ASP:OD2	2.41	0.54
1:A:472:ARG:HD3	1:B:16:ILE:HD12	1.89	0.54
1:A:1151:ALA:HB2	1:A:1193:GLU:HG3	1.90	0.54
1:B:999:ALA:HB1	1:B:1001:TYR:HE1	1.71	0.54
1:A:236:ASN:HB3	1:A:239:GLN:HB3	1.89	0.54
1:A:1253:ASP:OD1	1:A:1253:ASP:N	2.39	0.54
1:A:1388:PHE:HD2	1:A:1401:LEU:HD13	1.72	0.54
1:B:616:CYS:SG	1:B:660:ARG:HB2	2.47	0.54
1:B:616:CYS:SG	1:B:661:ILE:HG12	2.48	0.54
1:B:928:ILE:HA	1:B:931:ARG:HE	1.72	0.54
1:B:1367:TYR:HE2	1:B:1408:LYS:HG3	1.73	0.54
2:C:92:VAL:HG22	2:C:125:PHE:HB2	1.90	0.54
1:A:242:ILE:HG13	1:A:640:GLU:HB3	1.91	0.53
1:B:946:ILE:O	1:B:950:ILE:HG12	2.08	0.53
1:B:1367:TYR:CD1	1:B:1380:THR:HG21	2.43	0.53
1:A:1342:LEU:HD21	1:A:1355:LEU:HD11	1.90	0.53
2:D:98:LYS:HA	2:D:101:MET:HG2	1.90	0.53
1:A:100:PRO:HD3	2:D:78:TYR:CZ	2.44	0.53
1:A:87:LYS:O	1:B:472:ARG:NH2	2.41	0.53
2:D:112:LEU:O	2:D:118:GLN:NE2	2.42	0.53
2:D:146:LEU:HD13	2:D:154:TRP:HE1	1.74	0.53
1:B:1064:GLU:HB3	1:B:1108:THR:HG21	1.91	0.53
1:B:1011:GLU:OE1	1:B:1011:GLU:N	2.41	0.52
1:A:686:ASP:OD1	1:A:687:ASP:N	2.43	0.52
1:A:828:ALA:O	1:A:917:LYS:NZ	2.30	0.52
1:B:343:ILE:HD13	1:B:360:LEU:CD2	2.38	0.52
1:B:1348:THR:CG2	1:B:1349:GLN:N	2.73	0.52
2:D:89:VAL:HG11	2:D:117:LEU:HD13	1.90	0.52

*Continued on next page...*

*Continued from previous page...*

Atom-1	Atom-2	Interatomic distance (Å)	Clash overlap (Å)
1:A:18:GLU:HA	1:A:21:ASN:ND2	2.24	0.52
1:B:616:CYS:HB2	1:B:661:ILE:HD11	1.91	0.52
2:C:156:ILE:O	2:C:156:ILE:HG23	2.09	0.52
1:A:1048:LEU:HD11	1:A:1091:ILE:HG13	1.91	0.52
1:B:197:ILE:HG22	1:B:218:MET:HG2	1.92	0.52
1:B:402:LEU:HD21	1:B:457:ILE:HG22	1.91	0.52
1:A:637:ARG:HB3	1:A:743:TYR:CE1	2.45	0.52
1:A:1239:GLU:HA	1:A:1242:TYR:HB3	1.92	0.52
1:B:1266:LEU:HD22	1:B:1308:PHE:HD2	1.75	0.52
2:D:56:THR:HG22	2:D:65:ASN:HD22	1.75	0.52
1:A:1214:THR:CG2	1:A:1215:ASN:N	2.68	0.52
1:A:1389:ASN:HA	1:A:1392:VAL:HB	1.91	0.52
1:B:858:ASN:O	1:B:862:ASN:ND2	2.37	0.52
2:C:36:TYR:HA	2:C:39:GLN:HG2	1.92	0.52
1:A:1152:THR:HG23	1:A:1154:GLN:HB3	1.92	0.51
1:B:149:LEU:HD21	1:B:172:LEU:HD23	1.92	0.51
1:A:437:ILE:O	1:A:459:LYS:NZ	2.43	0.51
2:C:29:ALA:HB1	2:C:92:VAL:HG12	1.92	0.51
1:A:11:PRO:O	1:A:15:ILE:HG12	2.11	0.51
1:A:1339:LEU:HB3	1:A:1359:ILE:HG23	1.92	0.51
2:C:90:ILE:HD12	2:C:123:LEU:HD22	1.93	0.51
1:A:694:ASP:OD1	1:A:694:ASP:N	2.44	0.51
1:A:1236:ASN:HA	1:A:1239:GLU:HB3	1.92	0.51
1:A:129:ASN:O	1:A:132:ASN:ND2	2.44	0.51
1:B:1123:CYS:SG	1:B:1124:ALA:N	2.84	0.51
2:C:76:ARG:O	2:C:79:TRP:HB2	2.11	0.51
2:C:31:LYS:CE	2:C:69:LEU:O	2.55	0.50
1:B:811:LYS:HD3	1:B:853:PHE:CZ	2.46	0.50
1:B:1340:LEU:HA	1:B:1343:LEU:HB3	1.93	0.50
1:A:1226:ASP:OD1	1:A:1297:GLN:NE2	2.42	0.50
1:B:1126:GLN:N	1:B:1171:TYR:OH	2.44	0.50
1:A:12:VAL:HB	1:B:472:ARG:HE	1.76	0.50
1:A:1236:ASN:O	1:A:1240:ILE:HG12	2.11	0.50
2:D:129:GLN:HG3	2:D:158:ALA:HB1	1.93	0.50
1:A:1068:LEU:HD13	1:A:1111:ARG:HD3	1.94	0.50
1:B:1131:SER:O	1:B:1135:ASN:ND2	2.25	0.50
1:B:222:THR:HG23	1:B:223:VAL:N	2.26	0.50
1:A:1284:LYS:HB3	1:A:1327:GLU:OE2	2.12	0.50
1:A:223:VAL:HG22	1:A:369:ILE:HG13	1.94	0.49
1:A:1147:GLN:HA	1:A:1191:MET:HE1	1.94	0.49
1:B:10:ASP:O	1:B:12:VAL:N	2.45	0.49

*Continued on next page...*



*Continued from previous page...*

Atom-1	Atom-2	Interatomic distance (Å)	Clash overlap (Å)
2:C:65:ASN:OD1	2:C:67:TRP:NE1	2.45	0.49
1:A:861:LEU:HD21	1:A:928:ILE:HG21	1.94	0.49
1:B:1299:ILE:HG21	1:B:1342:LEU:HD11	1.94	0.49
1:A:94:SER:HA	1:A:97:ILE:HD12	1.93	0.49
1:A:734:CYS:O	1:A:737:LYS:HG2	2.12	0.49
1:A:925:PHE:CZ	1:A:929:ILE:HD11	2.46	0.49
1:A:21:ASN:OD1	1:A:22:LEU:N	2.46	0.49
1:B:1178:ASN:HD21	1:B:1180:ASN:HD22	1.59	0.49
1:A:120:ASP:OD1	1:A:168:LYS:NZ	2.36	0.49
2:D:71:GLY:HA2	2:D:79:TRP:CZ2	2.46	0.49
1:B:1106:LYS:HD2	1:B:1144:ILE:HG22	1.95	0.49
1:B:830:ASP:HB3	1:B:833:ILE:HG22	1.94	0.49
2:D:65:ASN:OD1	2:D:67:TRP:NE1	2.46	0.49
1:A:110:ILE:HG22	1:A:111:SER:N	2.28	0.48
1:A:1396:ASP:OD1	1:A:1396:ASP:N	2.40	0.48
1:B:103:LEU:HD11	2:C:52:PHE:CD1	2.48	0.48
2:C:21:ILE:HB	2:C:66:VAL:HG22	1.94	0.48
1:B:1348:THR:HG21	1:B:1351:ASP:CG	2.33	0.48
2:D:57:LEU:HB2	2:D:64:LEU:HG	1.95	0.48
1:A:1147:GLN:NE2	1:A:1193:GLU:OE2	2.46	0.48
1:B:1150:PHE:O	1:B:1194:GLN:NE2	2.47	0.48
1:B:1415:ASN:OD1	1:B:1416:GLY:N	2.47	0.48
1:A:1338:GLY:O	1:A:1341:PRO:HD2	2.13	0.48
1:B:383:LEU:O	1:B:387:PRO:HD2	2.14	0.48
1:B:1316:THR:HA	1:B:1320:LYS:HG2	1.95	0.48
1:A:1061:ARG:HG3	1:A:1062:TYR:HD2	1.78	0.48
1:B:232:ILE:O	1:B:377:TYR:OH	2.26	0.48
1:B:999:ALA:O	1:B:1001:TYR:N	2.42	0.48
1:B:1071:ILE:HD11	1:B:1098:LEU:HD12	1.95	0.48
1:B:1157:GLU:O	1:B:1161:ARG:HG3	2.14	0.48
1:B:1262:ILE:O	1:B:1266:LEU:HG	2.14	0.48
1:A:415:LEU:HD23	1:A:419:LEU:HD13	1.96	0.48
1:A:686:ASP:OD1	1:A:688:ILE:N	2.36	0.48
1:A:1398:GLU:OE2	1:A:1402:GLN:NE2	2.47	0.48
1:B:954:TYR:CE2	1:B:961:PRO:HB3	2.49	0.48
1:B:999:ALA:HB1	1:B:1001:TYR:CE1	2.48	0.48
1:B:343:ILE:CD1	1:B:360:LEU:CD2	2.91	0.48
1:A:1110:ARG:HD2	1:A:1149:PHE:CD1	2.49	0.48
1:A:1378:ASN:HA	1:A:1381:PHE:HD1	1.79	0.48
1:A:1194:GLN:O	1:A:1198:ILE:HG12	2.14	0.48
1:B:855:ASP:N	1:B:855:ASP:OD1	2.46	0.48

*Continued on next page...*

*Continued from previous page...*

Atom-1	Atom-2	Interatomic distance (Å)	Clash overlap (Å)
2:C:118:GLN:HA	2:C:152:ARG:HH22	1.78	0.48
1:A:654:GLU:OE1	1:A:656:GLN:NE2	2.47	0.47
1:A:1008:PRO:HB3	1:A:1012:GLU:HB2	1.95	0.47
1:B:1348:THR:HG21	1:B:1351:ASP:OD1	2.14	0.47
2:D:22:LEU:HD13	2:D:86:THR:HG23	1.94	0.47
1:A:498:LEU:HD13	1:A:813:VAL:HG11	1.96	0.47
1:B:646:LEU:HD12	1:B:756:ILE:HG21	1.96	0.47
1:B:892:VAL:HG12	1:B:893:GLN:N	2.29	0.47
1:B:928:ILE:HG23	1:B:931:ARG:HH21	1.79	0.47
1:A:1269:ILE:HG22	1:A:1312:THR:HG21	1.96	0.47
1:B:103:LEU:HD11	2:C:52:PHE:HD1	1.79	0.47
1:B:617:HIS:ND1	1:B:618:PRO:HD2	2.29	0.47
1:A:1002:LEU:HG	1:A:1003:LYS:H	1.79	0.47
1:A:1283:ARG:N	1:A:1286:GLU:OE2	2.44	0.47
1:B:76:PHE:CE1	1:B:100:PRO:HB2	2.50	0.47
1:A:1310:VAL:HG23	1:A:1362:ILE:HD11	1.97	0.47
1:A:1388:PHE:CD2	1:A:1401:LEU:HD13	2.49	0.47
1:B:971:LEU:HD11	1:B:1118:LEU:HD22	1.96	0.47
1:A:579:PRO:HA	1:A:582:ILE:HG22	1.96	0.47
1:A:617:HIS:CG	1:A:618:PRO:HD2	2.50	0.47
1:A:830:ASP:OD1	1:A:831:ASP:N	2.47	0.47
1:B:989:LYS:H	1:B:989:LYS:HG2	1.44	0.47
2:D:37:ARG:NH2	2:D:163:LYS:O	2.47	0.47
1:A:100:PRO:HD3	2:D:78:TYR:OH	2.15	0.47
1:A:1142:GLY:C	1:A:1144:ILE:H	2.16	0.47
1:A:1243:LYS:HA	1:A:1246:THR:HG1	1.78	0.47
1:B:402:LEU:HD21	1:B:457:ILE:HG21	1.97	0.47
1:B:1348:THR:H	1:B:1352:GLN:NE2	2.13	0.47
2:D:38:LEU:HD22	2:D:171:LEU:HD22	1.96	0.47
2:D:72:LEU:H	2:D:75:ILE:HD11	1.79	0.47
2:D:75:ILE:HA	2:D:78:TYR:HD2	1.78	0.47
1:B:1157:GLU:OE2	1:B:1161:ARG:NH1	2.47	0.47
2:D:27:ASP:N	2:D:27:ASP:OD1	2.47	0.47
1:A:460:GLU:OE2	1:B:27:ARG:NH2	2.48	0.47
1:A:1178:ASN:OD1	1:A:1181:PHE:N	2.45	0.47
1:B:1023:ILE:O	1:B:1026:SER:OG	2.25	0.47
2:C:20:ARG:HG2	2:C:86:THR:HA	1.96	0.47
1:A:1106:LYS:O	1:A:1110:ARG:HG2	2.14	0.47
1:B:504:LEU:HA	1:B:509:SER:OG	2.15	0.47
1:A:963:ILE:HG21	1:A:1073:LEU:HD12	1.97	0.46
1:B:1350:GLU:HG2	1:B:1351:ASP:H	1.81	0.46

*Continued on next page...*

Continued from previous page...

Atom-1	Atom-2	Interatomic distance (Å)	Clash overlap (Å)
2:D:56:THR:HB	2:D:63:LYS:HE3	1.95	0.46
1:A:9:VAL:HG21	1:B:368:GLU:HG3	1.95	0.46
1:A:644:ILE:O	1:A:644:ILE:HG22	2.14	0.46
2:C:22:LEU:HD12	2:C:67:TRP:HB2	1.97	0.46
1:B:895:LYS:HG2	1:B:902:GLU:HG2	1.97	0.46
1:B:1348:THR:HG22	1:B:1349:GLN:H	1.77	0.46
1:A:70:ASP:HB3	1:A:71:PRO:HD3	1.98	0.46
1:A:96:THR:O	2:D:78:TYR:OH	2.29	0.46
1:B:228:LYS:HD3	1:B:327:TYR:CE2	2.51	0.46
1:B:666:SER:HB3	1:B:698:VAL:HG23	1.97	0.46
1:B:1054:GLU:OE1	1:B:1056:ASN:ND2	2.48	0.46
1:B:1109:VAL:HG13	1:B:1145:PHE:HE1	1.81	0.46
2:C:19:LEU:HD13	2:C:178:ILE:HD13	1.98	0.46
1:B:153:ARG:HH12	1:B:256:THR:HB	1.80	0.46
1:B:973:LEU:HB3	1:B:1111:ARG:HH12	1.80	0.46
2:D:53:ASN:OD1	2:D:53:ASN:N	2.48	0.46
1:B:78:GLN:NE2	2:C:80:ARG:HE	2.13	0.46
1:B:932:ASN:O	1:B:1035:ASN:ND2	2.49	0.46
1:A:896:PHE:HA	1:A:987:LYS:O	2.15	0.46
1:B:522:LEU:HD22	1:B:824:ILE:HD13	1.98	0.46
1:A:1106:LYS:HD2	1:A:1110:ARG:HH21	1.81	0.45
1:B:618:PRO:HB3	1:B:660:ARG:NH2	2.30	0.45
1:B:691:VAL:HG12	1:B:693:PRO:HD3	1.97	0.45
2:D:22:LEU:HB3	2:D:24:LEU:HD11	1.97	0.45
1:A:1146:THR:OG1	1:A:1147:GLN:N	2.49	0.45
1:B:498:LEU:HD13	1:B:813:VAL:HG11	1.97	0.45
1:B:1388:PHE:O	1:B:1392:VAL:HG13	2.15	0.45
1:A:705:ILE:HD11	1:A:747:ILE:HD12	1.98	0.45
1:A:838:ILE:CG2	1:A:924:VAL:HG11	2.43	0.45
1:A:197:ILE:HG22	1:A:218:MET:HG2	1.97	0.45
1:A:963:ILE:HG13	1:A:964:PHE:CD1	2.51	0.45
1:B:735:ASN:O	1:B:735:ASN:ND2	2.48	0.45
1:B:1238:TRP:CD1	1:B:1257:PRO:HD2	2.51	0.45
1:B:1370:TYR:HA	1:B:1373:LEU:HG	1.98	0.45
1:B:236:ASN:OD1	1:B:239:GLN:N	2.44	0.45
1:B:1024:LYS:HE2	1:B:1024:LYS:HB2	1.79	0.45
2:C:24:LEU:O	2:C:31:LYS:CD	2.54	0.45
1:A:1323:ILE:HB	1:A:1324:PRO:HD3	1.99	0.45
1:B:973:LEU:HD21	1:B:1114:THR:HG21	1.98	0.45
1:A:871:ILE:HD13	1:A:948:ASN:HB3	1.98	0.45
1:B:541:ARG:NH1	1:B:852:ASP:OD1	2.49	0.45

Continued on next page...

*Continued from previous page...*

Atom-1	Atom-2	Interatomic distance (Å)	Clash overlap (Å)
1:B:1367:TYR:HD1	1:B:1380:THR:HG21	1.81	0.45
1:B:583:GLU:OE2	1:B:584:LYS:NZ	2.50	0.45
2:C:125:PHE:CZ	2:C:170:GLY:HA3	2.52	0.45
1:A:973:LEU:HB3	1:A:1111:ARG:NH1	2.32	0.45
1:B:246:SER:HB2	1:B:753:ASP:HB3	1.99	0.45
1:A:1323:ILE:O	1:A:1329:GLU:HA	2.17	0.45
1:A:1163:PHE:CE1	1:A:1185:LEU:HD21	2.52	0.44
1:A:822:PHE:CZ	1:A:863:SER:HB2	2.53	0.44
1:B:810:PHE:HZ	1:B:844:CYS:HG	1.64	0.44
2:C:83:TYR:CZ	2:C:111:MET:HG3	2.53	0.44
1:A:777:ILE:O	1:A:781:THR:HG23	2.17	0.44
1:B:962:ASP:OD1	1:B:962:ASP:N	2.51	0.44
1:B:1241:GLU:O	1:B:1244:LYS:HG2	2.18	0.44
1:B:1296:HIS:O	1:B:1299:ILE:HG12	2.17	0.44
1:A:468:ILE:HG21	1:B:17:LYS:HZ3	1.82	0.44
1:A:498:LEU:HD11	1:A:809:ILE:HD11	2.00	0.44
1:B:973:LEU:HB3	1:B:1111:ARG:NH1	2.32	0.44
1:B:1209:ASP:C	1:B:1211:ASN:H	2.20	0.44
1:A:142:HIS:O	1:A:145:THR:HG22	2.18	0.44
1:A:228:LYS:O	1:A:232:ILE:HG13	2.18	0.44
1:A:1376:THR:OG1	1:A:1377:SER:N	2.51	0.44
1:A:1407:ASP:O	1:A:1411:ILE:HG12	2.18	0.44
1:B:438:LEU:HB3	1:B:504:LEU:HD11	1.98	0.44
1:A:413:THR:HG21	1:A:465:GLN:O	2.18	0.44
1:A:898:ASP:O	1:A:899:THR:OG1	2.29	0.44
1:A:1411:ILE:O	1:A:1415:ASN:ND2	2.50	0.44
1:B:1348:THR:CG2	1:B:1349:GLN:H	2.30	0.44
1:A:150:THR:HG21	1:A:192:ASP:HB3	1.99	0.44
1:A:1277:GLU:OE1	1:A:1320:LYS:NZ	2.45	0.44
1:B:472:ARG:HA	1:B:472:ARG:HD2	1.76	0.44
1:B:1061:ARG:HG3	1:B:1062:TYR:HD2	1.82	0.44
1:A:110:ILE:HG21	1:A:114:ILE:HB	2.00	0.44
1:A:242:ILE:HD11	1:A:644:ILE:HD11	2.00	0.44
1:B:1027:ASN:OD1	1:B:1030:ALA:HB3	2.18	0.44
1:A:861:LEU:HD23	1:A:861:LEU:HA	1.80	0.44
1:A:1001:TYR:HB2	1:A:1002:LEU:H	1.61	0.44
1:A:1336:GLU:HA	1:A:1340:LEU:HB3	1.99	0.44
1:B:207:SER:OG	1:B:208:GLU:N	2.51	0.44
1:B:509:SER:O	1:B:513:THR:OG1	2.22	0.44
1:B:1167:GLU:OE2	1:B:1172:ARG:NH1	2.50	0.44
1:B:615:LEU:O	1:B:624:LEU:HB2	2.18	0.43

*Continued on next page...*

*Continued from previous page...*

Atom-1	Atom-2	Interatomic distance (Å)	Clash overlap (Å)
1:B:1336:GLU:O	1:B:1340:LEU:HB3	2.18	0.43
1:A:974:SER:O	1:A:975:ASN:HB2	2.17	0.43
1:A:1372:LYS:HG2	1:A:1411:ILE:HD12	2.00	0.43
1:A:907:THR:HG23	1:A:908:ASP:N	2.33	0.43
1:B:1375:LYS:HG3	1:B:1376:THR:HG23	2.00	0.43
2:C:141:SER:HB3	2:C:156:ILE:CD1	2.45	0.43
1:A:1231:MET:SD	1:A:1231:MET:N	2.91	0.43
1:B:1113:LEU:HD22	1:B:1145:PHE:CE2	2.53	0.43
2:C:33:THR:HG23	3:C:301:GTP:H5'	2.00	0.43
1:A:1243:LYS:HA	1:A:1246:THR:OG1	2.18	0.43
1:A:1044:ILE:HG23	1:A:1074:THR:OG1	2.19	0.43
1:B:638:VAL:HG22	1:B:669:TYR:CE2	2.53	0.43
1:B:1254:LYS:HG3	1:B:1255:GLU:O	2.19	0.43
2:D:141:SER:HA	2:D:146:LEU:HD12	2.01	0.43
1:B:694:ASP:N	1:B:697:SER:OG	2.52	0.43
2:C:124:VAL:HG23	2:C:156:ILE:HA	2.00	0.43
1:A:142:HIS:O	1:A:146:VAL:HG23	2.18	0.43
1:A:203:ASN:O	1:A:211:ARG:NH1	2.44	0.43
1:A:517:VAL:HB	1:A:518:PRO:HD3	2.00	0.42
1:A:550:GLU:HB2	1:A:555:LYS:HE3	2.00	0.42
1:B:463:ILE:HD12	1:B:463:ILE:HA	1.83	0.42
1:A:891:LEU:O	1:A:982:GLU:HB2	2.18	0.42
1:A:100:PRO:O	1:A:104:ILE:HG12	2.20	0.42
1:A:110:ILE:CG2	1:A:111:SER:N	2.82	0.42
1:A:325:ASP:O	1:A:326:ASN:C	2.58	0.42
1:A:572:GLU:HG3	1:A:573:LYS:HG2	2.02	0.42
1:B:219:ILE:O	1:B:223:VAL:HG23	2.19	0.42
1:B:1165:LEU:HD11	1:B:1171:TYR:HD2	1.84	0.42
1:A:1062:TYR:HD1	1:A:1066:GLU:HG3	1.84	0.42
1:B:174:ARG:HB2	1:B:217:THR:HG23	2.00	0.42
1:B:526:VAL:HA	1:B:529:VAL:HG12	2.00	0.42
1:B:1405:ILE:HG13	1:B:1406:LEU:N	2.34	0.42
2:D:118:GLN:HA	2:D:152:ARG:NH2	2.35	0.42
1:B:1117:ILE:HD12	1:B:1117:ILE:HA	1.85	0.42
1:A:348:GLU:HA	1:A:356:ARG:NH1	2.35	0.42
1:A:1378:ASN:HA	1:A:1381:PHE:CD1	2.55	0.42
1:B:412:PHE:O	1:B:416:VAL:HG23	2.20	0.42
1:A:1336:GLU:O	1:A:1341:PRO:HD3	2.20	0.42
1:B:938:PHE:HD2	1:B:942:LEU:HD23	1.84	0.42
1:B:392:ILE:HD11	1:B:411:LEU:HD23	2.02	0.42
1:B:439:LEU:HD22	1:B:503:LYS:HD2	2.02	0.42

*Continued on next page...*

*Continued from previous page...*

Atom-1	Atom-2	Interatomic distance (Å)	Clash overlap (Å)
2:D:164:GLY:O	2:D:166:GLY:N	2.53	0.42
1:A:854:LYS:HG2	1:A:858:ASN:HD21	1.83	0.42
1:A:953:LEU:HD13	1:A:953:LEU:HA	1.92	0.42
1:B:16:ILE:O	1:B:20:ILE:HG23	2.20	0.42
1:B:139:ILE:HG12	1:B:184:LEU:HD23	2.01	0.42
1:B:954:TYR:HE2	1:B:961:PRO:HB3	1.85	0.42
1:B:1147:GLN:HG3	1:B:1191:MET:HE3	2.01	0.42
1:B:1150:PHE:HB3	1:B:1194:GLN:HE22	1.85	0.42
1:A:936:LYS:HE3	1:A:936:LYS:HB3	1.89	0.41
1:B:219:ILE:C	1:B:222:THR:HG22	2.39	0.41
1:B:222:THR:CG2	1:B:223:VAL:N	2.83	0.41
1:B:226:PHE:O	1:B:229:LEU:HB3	2.20	0.41
1:B:893:GLN:O	1:B:985:ILE:HG22	2.19	0.41
2:C:30:GLY:O	2:C:34:ILE:HG12	2.20	0.41
1:A:99:GLN:HB3	2:D:78:TYR:CE2	2.56	0.41
1:B:1114:THR:O	1:B:1117:ILE:HG22	2.20	0.41
1:B:1213:LEU:HD23	1:B:1213:LEU:HA	1.92	0.41
1:A:150:THR:HG23	1:A:196:THR:OG1	2.21	0.41
1:A:696:ASP:O	1:A:700:ILE:HG12	2.20	0.41
1:A:906:SER:H	1:A:909:ALA:HB3	1.86	0.41
1:B:1048:LEU:HA	1:B:1048:LEU:HD23	1.79	0.41
1:B:1388:PHE:O	1:B:1392:VAL:N	2.54	0.41
1:B:616:CYS:HG	1:B:661:ILE:HG12	1.84	0.41
1:B:1236:ASN:HB2	1:B:1302:CYS:HA	2.02	0.41
2:D:30:GLY:N	3:D:301:GTP:O2B	2.53	0.41
1:A:336:LEU:HB3	1:A:383:LEU:HD13	2.02	0.41
1:A:539:ILE:HG13	1:A:803:LEU:HD11	2.03	0.41
1:A:1141:LYS:HD3	1:A:1141:LYS:HA	1.93	0.41
1:B:124:LYS:HA	1:B:127:THR:HG22	2.01	0.41
1:B:1228:ILE:O	1:B:1231:MET:HG2	2.19	0.41
2:D:37:ARG:HD2	2:D:41:GLY:HA2	2.03	0.41
1:A:81:LEU:O	1:A:85:LYS:HG2	2.21	0.41
1:A:142:HIS:HA	1:A:145:THR:HG22	2.03	0.41
1:A:1135:ASN:OD1	1:A:1180:ASN:ND2	2.54	0.41
1:A:1217:ASN:O	1:A:1221:VAL:HG22	2.20	0.41
1:A:1232:GLY:HA3	1:A:1300:ASN:ND2	2.33	0.41
1:A:10:ASP:O	1:A:13:THR:HG22	2.21	0.41
1:B:198:LEU:HD23	1:B:252:LEU:HD13	2.03	0.41
1:B:219:ILE:HD13	1:B:362:LEU:HD23	2.03	0.41
1:B:416:VAL:HG13	1:B:427:ILE:HD13	2.02	0.41
1:B:940:LYS:HE3	1:B:940:LYS:HB3	1.95	0.41

*Continued on next page...*

Continued from previous page...

Atom-1	Atom-2	Interatomic distance (Å)	Clash overlap (Å)
2:C:27:ASP:OD1	2:C:27:ASP:N	2.52	0.41
1:A:1009:THR:C	1:A:1011:GLU:H	2.23	0.41
1:B:1150:PHE:HB3	1:B:1194:GLN:NE2	2.36	0.41
1:A:328:GLY:O	1:A:332:VAL:HG23	2.21	0.41
1:A:386:ASP:OD1	1:A:773:TRP:NE1	2.51	0.41
1:A:616:CYS:SG	1:A:657:GLN:HA	2.61	0.41
1:A:644:ILE:O	1:A:644:ILE:CG2	2.69	0.41
1:B:518:PRO:HB2	1:B:519:PRO:HD3	2.03	0.41
1:B:701:LEU:O	1:B:704:SER:OG	2.29	0.41
1:B:811:LYS:HD3	1:B:853:PHE:CE1	2.56	0.41
1:B:1011:GLU:OE2	1:B:1012:GLU:HG3	2.21	0.41
1:B:1044:ILE:HG23	1:B:1074:THR:HG23	2.03	0.41
1:B:1047:LEU:HD21	1:B:1073:LEU:HB3	2.03	0.41
1:B:1367:TYR:CD1	1:B:1380:THR:CG2	3.04	0.41
1:B:1404:LEU:HA	1:B:1407:ASP:OD2	2.21	0.41
1:A:647:THR:HG23	1:A:648:LYS:N	2.36	0.41
1:A:1316:THR:O	1:A:1320:LYS:HB2	2.21	0.41
1:B:1166:THR:HG21	1:B:1201:TYR:OH	2.21	0.41
1:A:240:ILE:H	1:A:240:ILE:HG13	1.67	0.40
1:A:1056:ASN:OD1	1:A:1057:ALA:N	2.54	0.40
1:A:1114:THR:O	1:A:1117:ILE:HG22	2.21	0.40
1:A:1134:ILE:HD13	1:A:1138:LEU:HD12	2.02	0.40
1:B:1358:SER:O	1:B:1362:ILE:HG12	2.20	0.40
1:A:624:LEU:O	1:A:628:ILE:HG12	2.21	0.40
1:A:803:LEU:HD23	1:A:803:LEU:HA	1.77	0.40
1:A:865:ALA:HA	1:A:868:THR:HG23	2.02	0.40
1:A:1378:ASN:O	1:A:1382:LEU:HG	2.22	0.40
1:B:538:ASP:N	1:B:538:ASP:OD1	2.55	0.40
1:B:1087:LEU:O	1:B:1091:ILE:HD13	2.22	0.40
1:A:691:VAL:HG11	1:A:743:TYR:HD2	1.87	0.40
1:B:70:ASP:HB3	1:B:71:PRO:HD3	2.02	0.40
1:B:891:LEU:HD12	1:B:905:VAL:O	2.22	0.40
1:B:1277:GLU:HG3	1:B:1320:LYS:NZ	2.36	0.40
1:A:336:LEU:HD23	1:A:336:LEU:HA	1.84	0.40
1:A:542:GLU:O	1:A:546:ARG:HG3	2.22	0.40
1:A:740:PRO:HB2	1:A:742:TRP:CD1	2.56	0.40
1:A:1371:LEU:HD13	1:A:1381:PHE:HZ	1.86	0.40
1:B:1185:LEU:HA	1:B:1188:VAL:HG12	2.03	0.40
1:B:1348:THR:HG21	1:B:1351:ASP:OD2	2.22	0.40
2:D:83:TYR:CD1	2:D:117:LEU:HD11	2.56	0.40

There are no symmetry-related clashes.

## 5.3 Torsion angles [i](#)

### 5.3.1 Protein backbone [i](#)

In the following table, the Percentiles column shows the percent Ramachandran outliers of the chain as a percentile score with respect to all PDB entries followed by that with respect to all EM entries.

The Analysed column shows the number of residues for which the backbone conformation was analysed, and the total number of residues.

Mol	Chain	Analysed	Favoured	Allowed	Outliers	Percentiles	
1	A	1273/1483 (86%)	1151 (90%)	122 (10%)	0	100	100
1	B	1264/1483 (85%)	1161 (92%)	103 (8%)	0	100	100
2	C	163/183 (89%)	151 (93%)	12 (7%)	0	100	100
2	D	163/183 (89%)	155 (95%)	8 (5%)	0	100	100
All	All	2863/3332 (86%)	2618 (91%)	245 (9%)	0	100	100

There are no Ramachandran outliers to report.

### 5.3.2 Protein sidechains [i](#)

In the following table, the Percentiles column shows the percent sidechain outliers of the chain as a percentile score with respect to all PDB entries followed by that with respect to all EM entries.

The Analysed column shows the number of residues for which the sidechain conformation was analysed, and the total number of residues.

Mol	Chain	Analysed	Rotameric	Outliers	Percentiles	
1	A	1191/1367 (87%)	1176 (99%)	15 (1%)	69	82
1	B	1184/1367 (87%)	1166 (98%)	18 (2%)	65	81
2	C	142/156 (91%)	141 (99%)	1 (1%)	84	90
2	D	142/156 (91%)	140 (99%)	2 (1%)	67	82
All	All	2659/3046 (87%)	2623 (99%)	36 (1%)	68	82

All (36) residues with a non-rotameric sidechain are listed below:

Mol	Chain	Res	Type
1	A	389	PHE
1	A	497	PHE

*Continued on next page...*



*Continued from previous page...*

<b>Mol</b>	<b>Chain</b>	<b>Res</b>	<b>Type</b>
1	A	600	PHE
1	A	703	TYR
1	A	718	LYS
1	A	723	PHE
1	A	743	TYR
1	A	767	LYS
1	A	768	TRP
1	A	857	PHE
1	A	972	LYS
1	A	1001	TYR
1	A	1080	PHE
1	A	1243	LYS
1	A	1270	GLN
1	B	10	ASP
1	B	171	PHE
1	B	389	PHE
1	B	497	PHE
1	B	703	TYR
1	B	735	ASN
1	B	737	LYS
1	B	739	PHE
1	B	746	ARG
1	B	749	CYS
1	B	768	TRP
1	B	810	PHE
1	B	896	PHE
1	B	914	ARG
1	B	934	ASP
1	B	1080	PHE
1	B	1218	PHE
1	B	1308	PHE
2	C	47	LYS
2	D	64	LEU
2	D	80	ARG

Sometimes sidechains can be flipped to improve hydrogen bonding and reduce clashes. All (8) such sidechains are listed below:

<b>Mol</b>	<b>Chain</b>	<b>Res</b>	<b>Type</b>
1	A	129	ASN
1	A	132	ASN
1	A	858	ASN
1	A	1147	GLN

*Continued on next page...*

*Continued from previous page...*

Mol	Chain	Res	Type
1	A	1236	ASN
1	B	932	ASN
1	B	1180	ASN
1	B	1369	HIS

### 5.3.3 RNA [i](#)

There are no RNA molecules in this entry.

### 5.4 Non-standard residues in protein, DNA, RNA chains [i](#)

There are no non-standard protein/DNA/RNA residues in this entry.

### 5.5 Carbohydrates [i](#)

There are no monosaccharides in this entry.

### 5.6 Ligand geometry [i](#)

2 ligands are modelled in this entry.

In the following table, the Counts columns list the number of bonds (or angles) for which Mogul statistics could be retrieved, the number of bonds (or angles) that are observed in the model and the number of bonds (or angles) that are defined in the Chemical Component Dictionary. The Link column lists molecule types, if any, to which the group is linked. The Z score for a bond length (or angle) is the number of standard deviations the observed value is removed from the expected value. A bond length (or angle) with  $|Z| > 2$  is considered an outlier worth inspection. RMSZ is the root-mean-square of all Z scores of the bond lengths (or angles).

Mol	Type	Chain	Res	Link	Bond lengths			Bond angles		
					Counts	RMSZ	# $ Z  > 2$	Counts	RMSZ	# $ Z  > 2$
3	GTP	D	301	-	26,34,34	1.13	2 (7%)	32,54,54	1.59	7 (21%)
3	GTP	C	301	-	26,34,34	1.13	2 (7%)	32,54,54	1.65	7 (21%)

In the following table, the Chirals column lists the number of chiral outliers, the number of chiral centers analysed, the number of these observed in the model and the number defined in the Chemical Component Dictionary. Similar counts are reported in the Torsion and Rings columns. '-' means no outliers of that kind were identified.

Mol	Type	Chain	Res	Link	Chirals	Torsions	Rings
3	GTP	D	301	-	-	6/18/38/38	0/3/3/3
3	GTP	C	301	-	-	5/18/38/38	0/3/3/3

All (4) bond length outliers are listed below:

Mol	Chain	Res	Type	Atoms	Z	Observed(Å)	Ideal(Å)
3	C	301	GTP	C5-C6	-4.05	1.39	1.47
3	D	301	GTP	C5-C6	-4.01	1.39	1.47
3	C	301	GTP	C2-N3	2.22	1.38	1.33
3	D	301	GTP	C2-N3	2.18	1.38	1.33

All (14) bond angle outliers are listed below:

Mol	Chain	Res	Type	Atoms	Z	Observed(°)	Ideal(°)
3	C	301	GTP	PA-O3A-PB	-3.71	120.08	132.83
3	C	301	GTP	PB-O3B-PG	-3.70	120.14	132.83
3	D	301	GTP	PA-O3A-PB	-3.68	120.21	132.83
3	D	301	GTP	PB-O3B-PG	-3.41	121.12	132.83
3	C	301	GTP	C3'-C2'-C1'	3.29	105.93	100.98
3	C	301	GTP	C5-C6-N1	3.27	119.72	113.95
3	D	301	GTP	C5-C6-N1	3.26	119.72	113.95
3	D	301	GTP	C3'-C2'-C1'	3.11	105.66	100.98
3	D	301	GTP	C8-N7-C5	3.03	108.77	102.99
3	C	301	GTP	C8-N7-C5	2.98	108.66	102.99
3	C	301	GTP	C2-N1-C6	-2.95	119.67	125.10
3	D	301	GTP	C2-N1-C6	-2.91	119.75	125.10
3	C	301	GTP	O6-C6-C5	-2.22	120.04	124.37
3	D	301	GTP	O6-C6-C5	-2.13	120.22	124.37

There are no chirality outliers.

All (11) torsion outliers are listed below:

Mol	Chain	Res	Type	Atoms
3	C	301	GTP	C5'-O5'-PA-O1A
3	D	301	GTP	C5'-O5'-PA-O1A
3	C	301	GTP	O4'-C4'-C5'-O5'
3	C	301	GTP	C3'-C4'-C5'-O5'
3	D	301	GTP	C3'-C4'-C5'-O5'
3	D	301	GTP	O4'-C4'-C5'-O5'
3	C	301	GTP	C5'-O5'-PA-O3A
3	D	301	GTP	C5'-O5'-PA-O3A
3	C	301	GTP	C5'-O5'-PA-O2A

*Continued on next page...*

*Continued from previous page...*

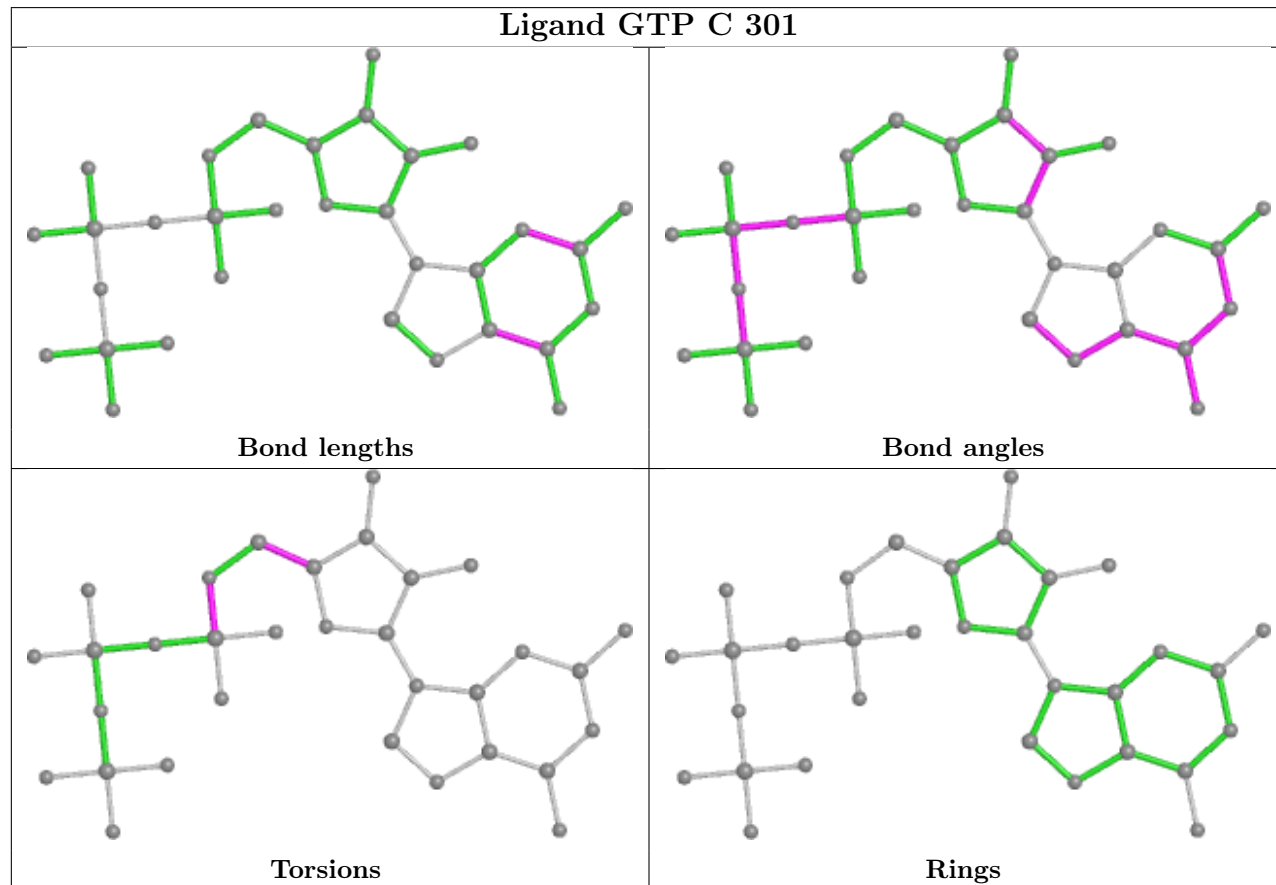
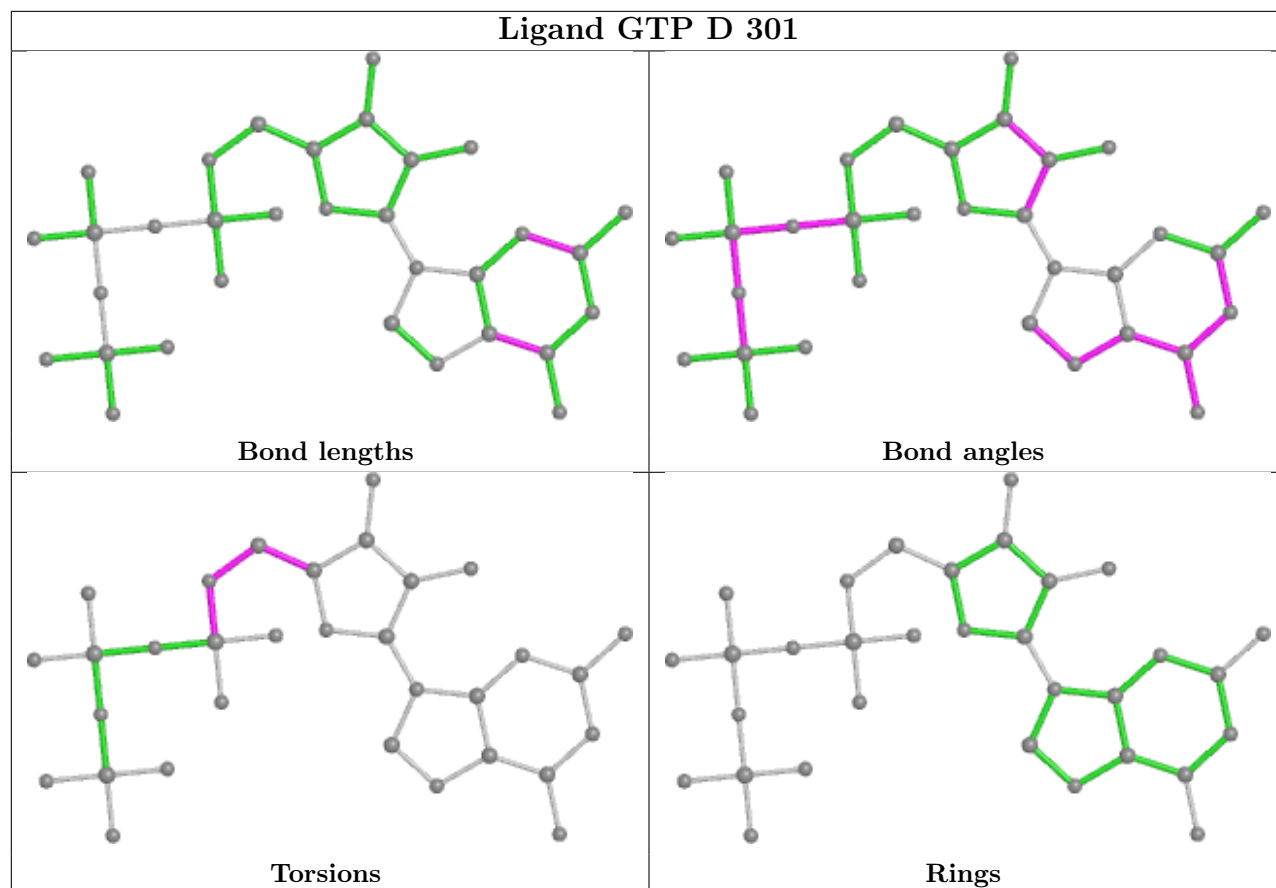
Mol	Chain	Res	Type	Atoms
3	D	301	GTP	C5'-O5'-PA-O2A
3	D	301	GTP	C4'-C5'-O5'-PA

There are no ring outliers.

2 monomers are involved in 3 short contacts:

Mol	Chain	Res	Type	Clashes	Symm-Clashes
3	D	301	GTP	1	0
3	C	301	GTP	2	0

The following is a two-dimensional graphical depiction of Mogul quality analysis of bond lengths, bond angles, torsion angles, and ring geometry for all instances of the Ligand of Interest. In addition, ligands with molecular weight > 250 and outliers as shown on the validation Tables will also be included. For torsion angles, if less than 5% of the Mogul distribution of torsion angles is within 10 degrees of the torsion angle in question, then that torsion angle is considered an outlier. Any bond that is central to one or more torsion angles identified as an outlier by Mogul will be highlighted in the graph. For rings, the root-mean-square deviation (RMSD) between the ring in question and similar rings identified by Mogul is calculated over all ring torsion angles. If the average RMSD is greater than 60 degrees and the minimal RMSD between the ring in question and any Mogul-identified rings is also greater than 60 degrees, then that ring is considered an outlier. The outliers are highlighted in purple. The color gray indicates Mogul did not find sufficient equivalents in the CSD to analyse the geometry.



## 5.7 Other polymers

There are no such residues in this entry.

## 5.8 Polymer linkage issues

There are no chain breaks in this entry.

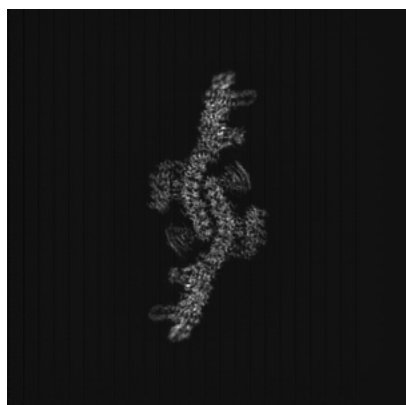
## 6 Map visualisation [i](#)

This section contains visualisations of the EMDB entry EMD-28743. These allow visual inspection of the internal detail of the map and identification of artifacts.

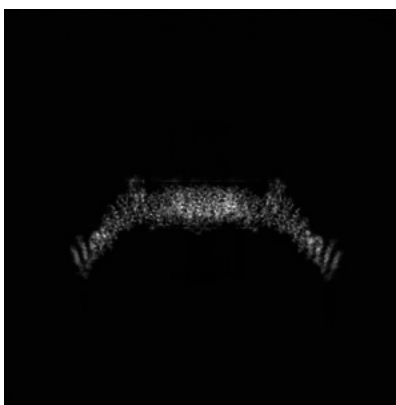
No raw map or half-maps were deposited for this entry and therefore no images, graphs, etc. pertaining to the raw map can be shown.

### 6.1 Orthogonal projections [i](#)

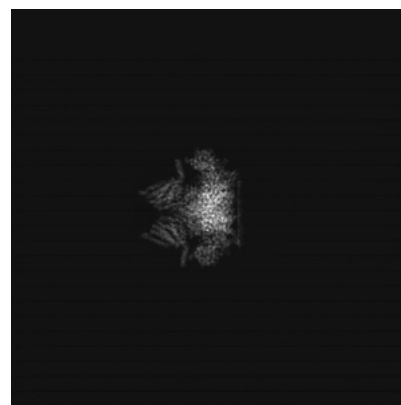
#### 6.1.1 Primary map



X



Y



Z

The images above show the map projected in three orthogonal directions.

### 6.2 Central slices [i](#)

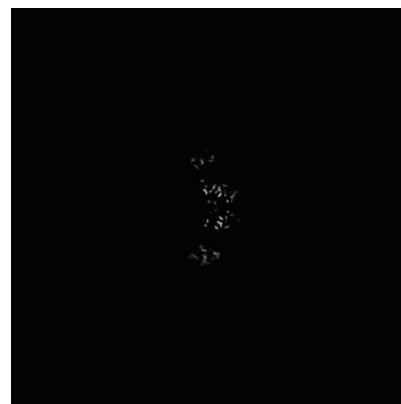
#### 6.2.1 Primary map



X Index: 256



Y Index: 256



Z Index: 256

The images above show central slices of the map in three orthogonal directions.

## 6.3 Largest variance slices [\(i\)](#)

### 6.3.1 Primary map



X Index: 256



Y Index: 274

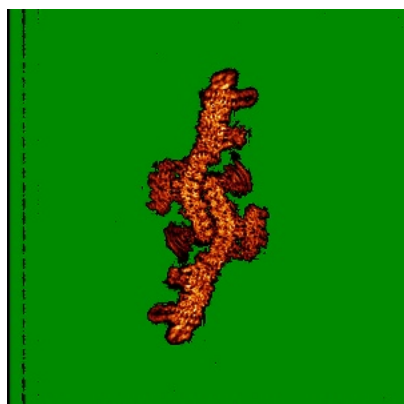


Z Index: 237

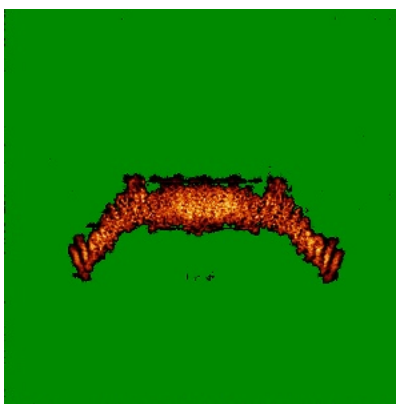
The images above show the largest variance slices of the map in three orthogonal directions.

## 6.4 Orthogonal standard-deviation projections (False-color) [\(i\)](#)

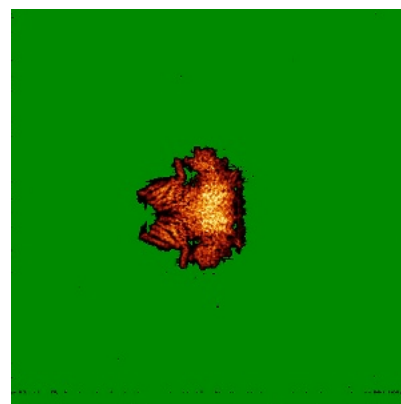
### 6.4.1 Primary map



X



Y



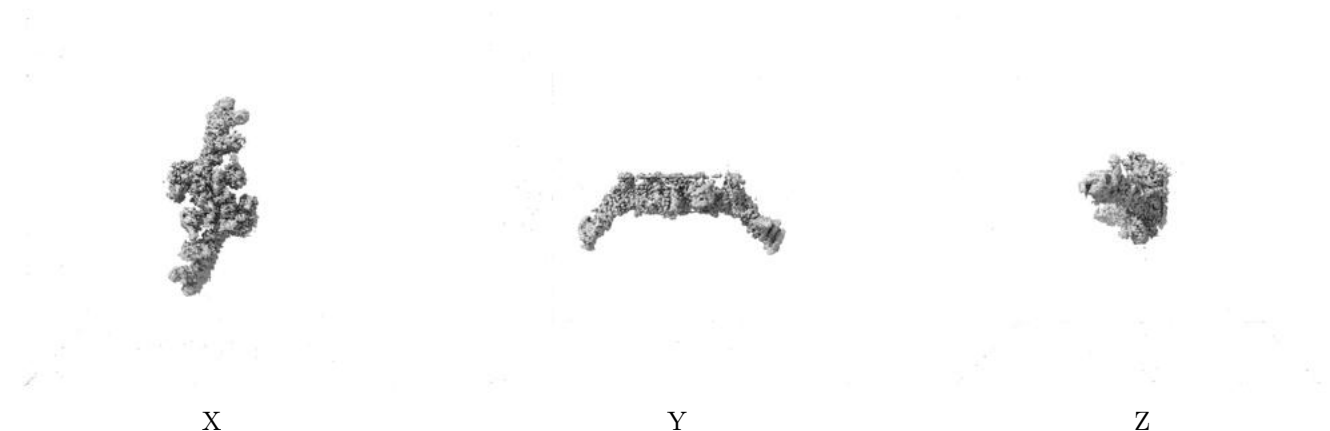
Z

The images above show the map standard deviation projections with false color in three orthogonal directions. Minimum values are shown in green, max in blue, and dark to light orange shades represent small to large values respectively.



## 6.5 Orthogonal surface views [i](#)

### 6.5.1 Primary map



The images above show the 3D surface view of the map at the recommended contour level 0.01. These images, in conjunction with the slice images, may facilitate assessment of whether an appropriate contour level has been provided.

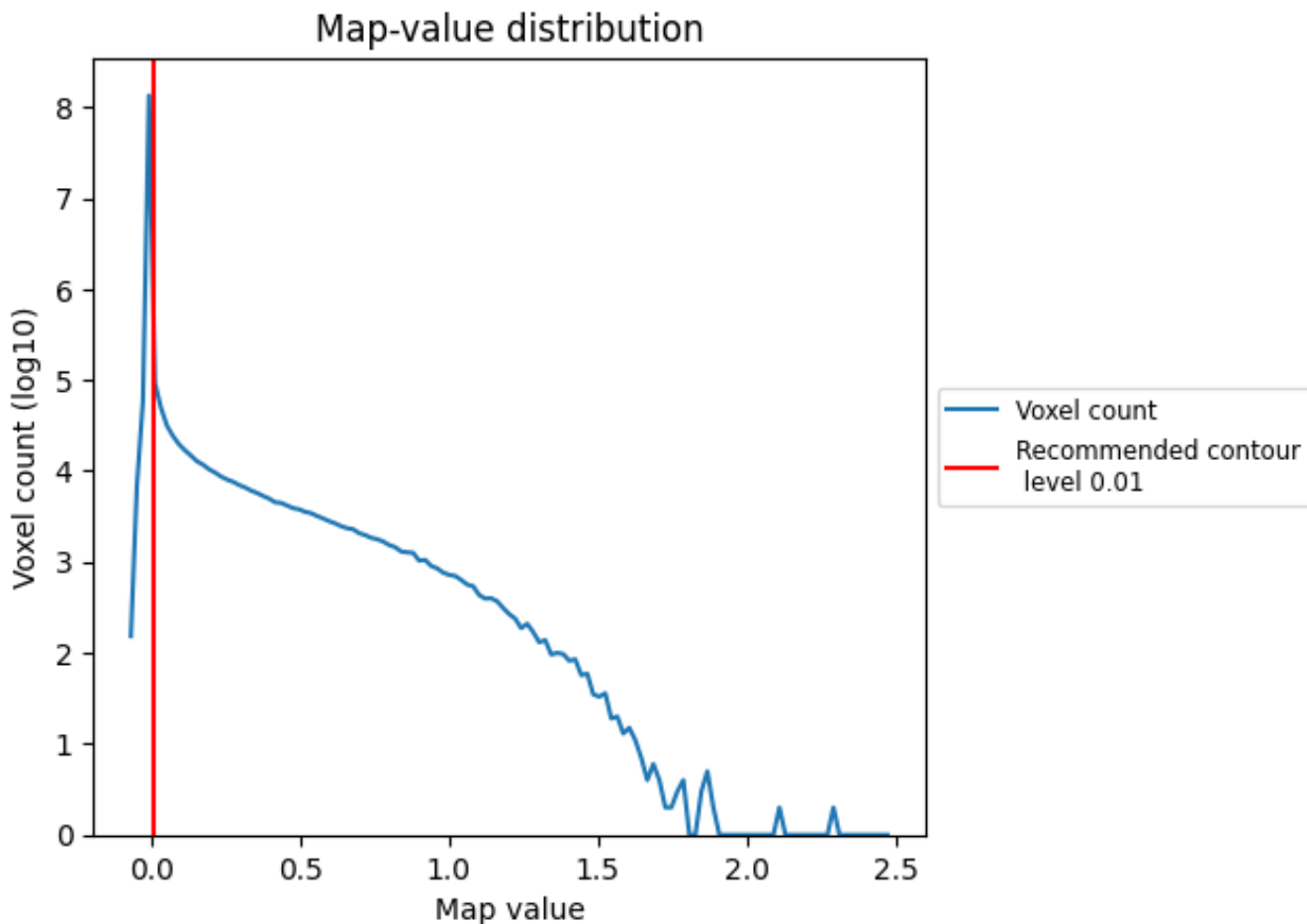
## 6.6 Mask visualisation [i](#)

This section was not generated. No masks/segmentation were deposited.

## 7 Map analysis [i](#)

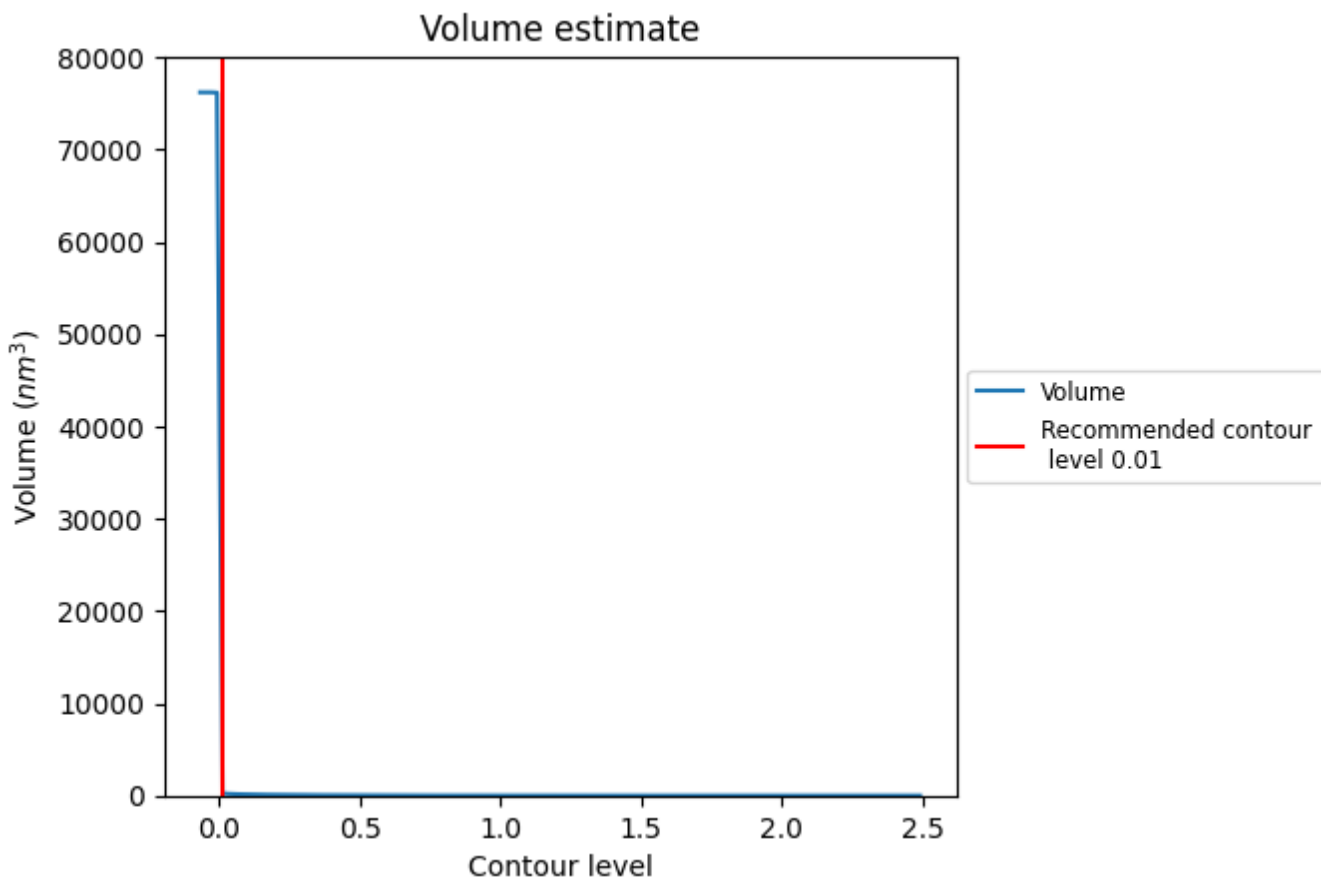
This section contains the results of statistical analysis of the map.

### 7.1 Map-value distribution [i](#)



The map-value distribution is plotted in 128 intervals along the x-axis. The y-axis is logarithmic. A spike in this graph at zero usually indicates that the volume has been masked.

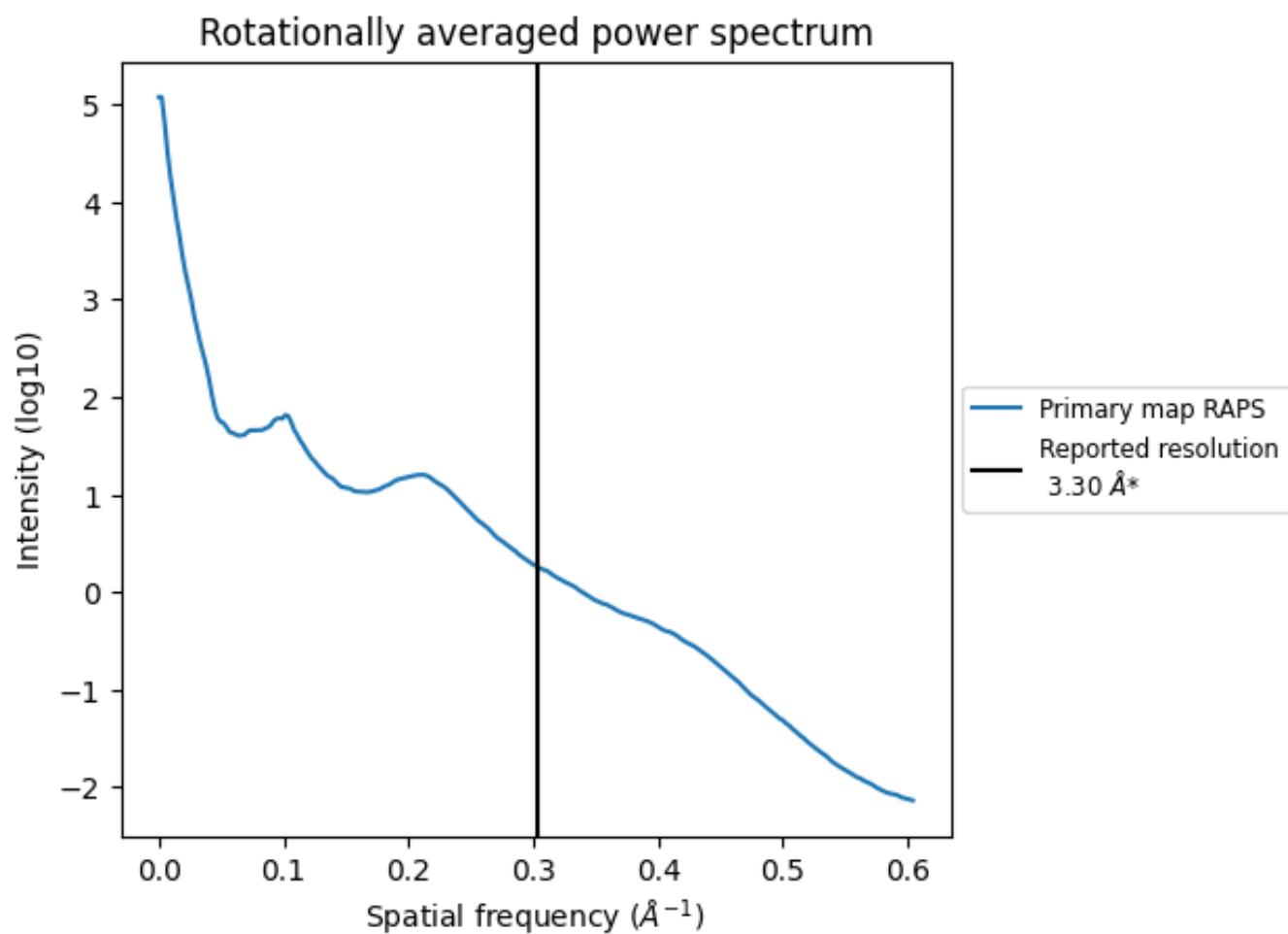
## 7.2 Volume estimate [i](#)



The volume at the recommended contour level is 12200 nm<sup>3</sup>; this corresponds to an approximate mass of 11021 kDa.

The volume estimate graph shows how the enclosed volume varies with the contour level. The recommended contour level is shown as a vertical line and the intersection between the line and the curve gives the volume of the enclosed surface at the given level.

### 7.3 Rotationally averaged power spectrum [i](#)



\*Reported resolution corresponds to spatial frequency of 0.303 Å<sup>-1</sup>

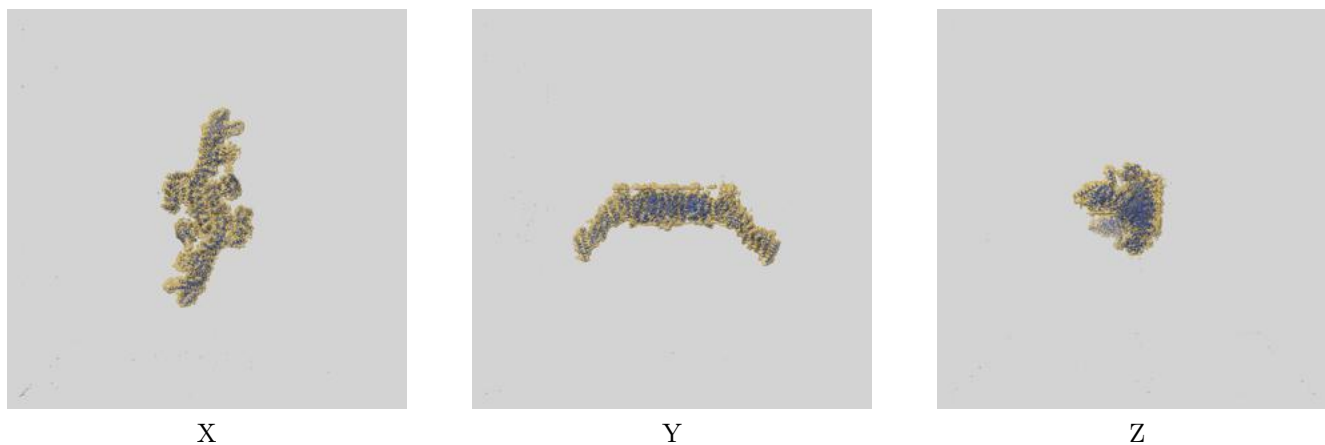
## 8 Fourier-Shell correlation

This section was not generated. No FSC curve or half-maps provided.

## 9 Map-model fit [i](#)

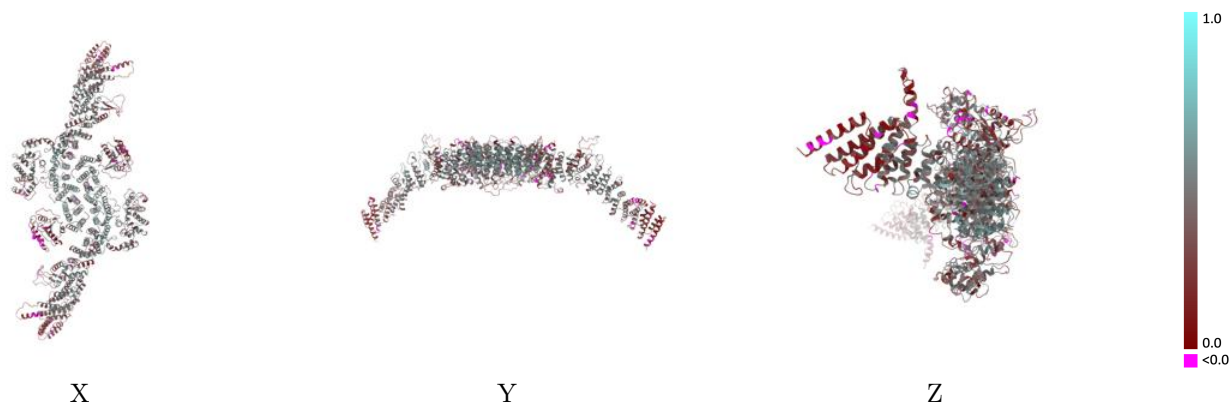
This section contains information regarding the fit between EMDB map EMD-28743 and PDB model 8EZJ. Per-residue inclusion information can be found in section [3](#) on page [7](#).

### 9.1 Map-model overlay [i](#)



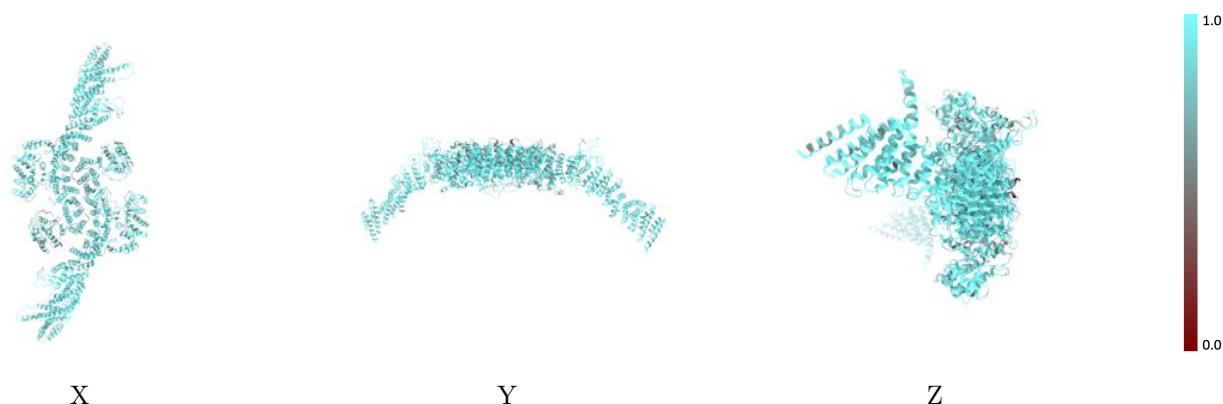
The images above show the 3D surface view of the map at the recommended contour level 0.01 at 50% transparency in yellow overlaid with a ribbon representation of the model coloured in blue. These images allow for the visual assessment of the quality of fit between the atomic model and the map.

## 9.2 Q-score mapped to coordinate model [\(i\)](#)



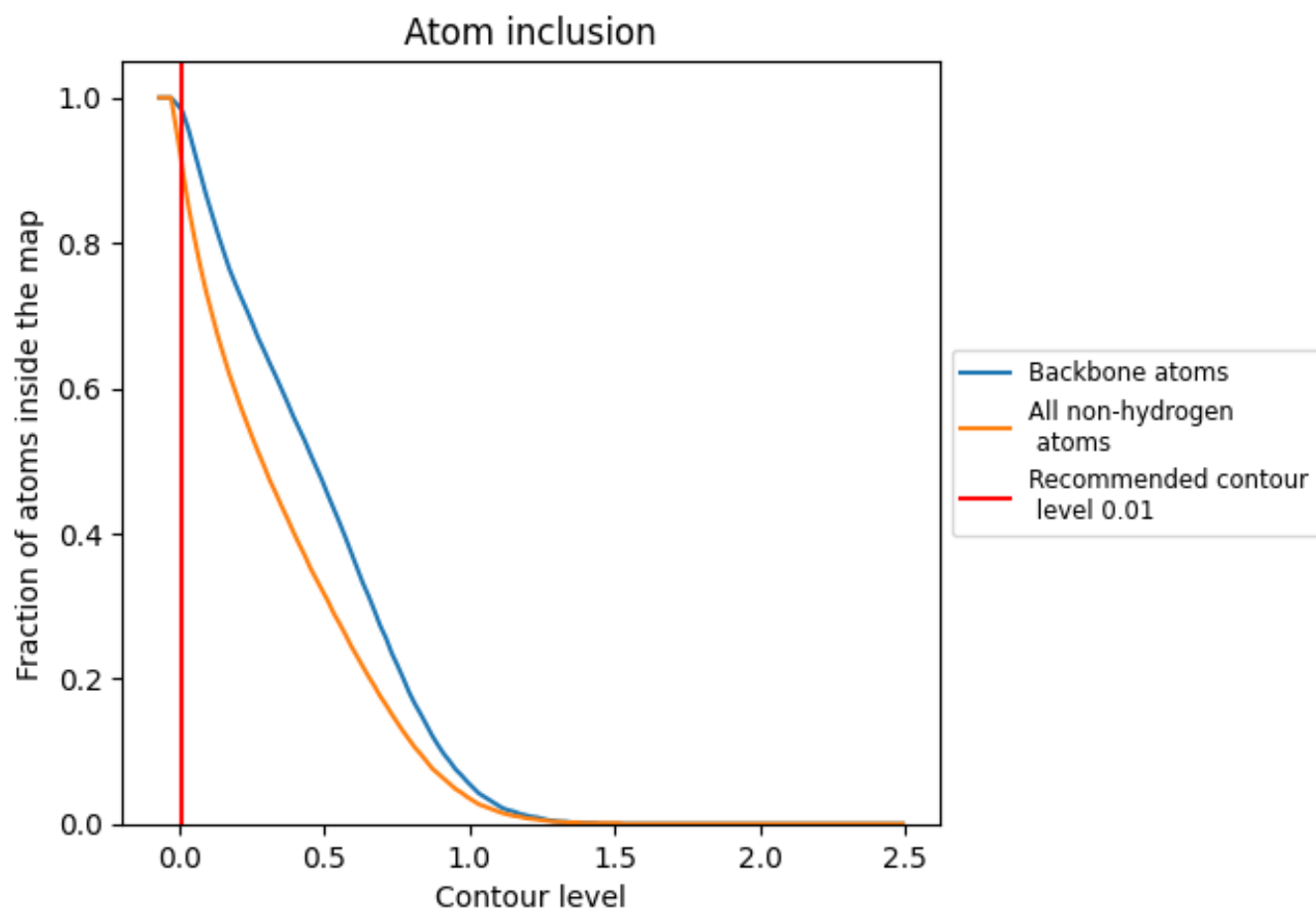
The images above show the model with each residue coloured according to its Q-score. This shows their resolvability in the map with higher Q-score values reflecting better resolvability. Please note: Q-score is calculating the resolvability of atoms, and thus high values are only expected at resolutions at which atoms can be resolved. Low Q-score values may therefore be expected for many entries.

## 9.3 Atom inclusion mapped to coordinate model [\(i\)](#)



The images above show the model with each residue coloured according to its atom inclusion. This shows to what extent they are inside the map at the recommended contour level (0.01).

## 9.4 Atom inclusion [i](#)












At the recommended contour level, 98% of all backbone atoms, 91% of all non-hydrogen atoms, are inside the map.



## 9.5 Map-model fit summary

The table lists the average atom inclusion at the recommended contour level (0.01) and Q-score for the entire model and for each chain.

Chain	Atom inclusion	Q-score
All	 0.9100	 0.3990
A	 0.9250	 0.4160
B	 0.9270	 0.4140
C	 0.7450	 0.2500
D	 0.8280	 0.3040

