



Full wwPDB EM Validation Report ⓘ

Apr 11, 2024 – 04:19 PM EDT

PDB ID : 3EPD
EMDB ID : EMD-1562
Title : CryoEM structure of poliovirus receptor bound to poliovirus type 3
Authors : Zhang, P.; Mueller, S.; Morais, M.C.; Bator, C.M.; Bowman, V.D.; Hafenstein, S.; Wimmer, E.; Rossmann, M.G.
Deposited on : 2008-09-29
Resolution : 9.00 Å(reported)

This is a Full wwPDB EM Validation Report for a publicly released PDB entry.

We welcome your comments at validation@mail.wwpdb.org

A user guide is available at

<https://www.wwpdb.org/validation/2017/EMValidationReportHelp>

with specific help available everywhere you see the ⓘ symbol.

The types of validation reports are described at

<http://www.wwpdb.org/validation/2017/FAQs#types>.

The following versions of software and data (see [references ⓘ](#)) were used in the production of this report:

EMDB validation analysis : 0.0.1.dev92
Mogul : 1.8.5 (274361), CSD as541be (2020)
MolProbity : 4.02b-467
buster-report : 1.1.7 (2018)
Percentile statistics : 20191225.v01 (using entries in the PDB archive December 25th 2019)
MapQ : 1.9.13
Ideal geometry (proteins) : Engh & Huber (2001)
Ideal geometry (DNA, RNA) : Parkinson et al. (1996)
Validation Pipeline (wwPDB-VP) : 2.36.1

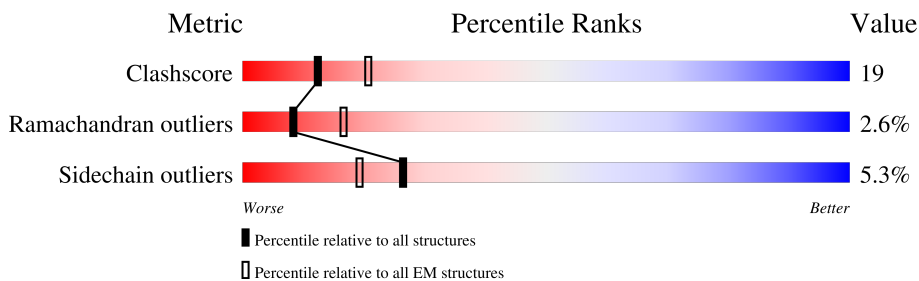
1 Overall quality at a glance

The following experimental techniques were used to determine the structure:

ELECTRON MICROSCOPY

The reported resolution of this entry is 9.00 Å.

Percentile scores (ranging between 0-100) for global validation metrics of the entry are shown in the following graphic. The table shows the number of entries on which the scores are based.



Metric	Whole archive (#Entries)	EM structures (#Entries)
Clashscore	158937	4297
Ramachandran outliers	154571	4023
Sidechain outliers	154315	3826

The table below summarises the geometric issues observed across the polymeric chains and their fit to the map. The red, orange, yellow and green segments of the bar indicate the fraction of residues that contain outliers for ≥ 3 , 2, 1 and 0 types of geometric quality criteria respectively. A grey segment represents the fraction of residues that are not modelled. The numeric value for each fraction is indicated below the corresponding segment, with a dot representing fractions $\leq 5\%$. The upper red bar (where present) indicates the fraction of residues that have poor fit to the EM map (all-atom inclusion $< 40\%$). The numeric value is given above the bar.

Mol	Chain	Length	Quality of chain
1	R	213	
2	0	4	
3	1	279	
4	2	266	
5	4	68	
6	3	235	

The following table lists non-polymeric compounds, carbohydrate monomers and non-standard residues in protein, DNA, RNA chains that are outliers for geometric or electron-density-fit criteria:

Mol	Type	Chain	Res	Chirality	Geometry	Clashes	Electron density
7	SPH	1	1000	X	-	-	-

2 Entry composition

There are 8 unique types of molecules in this entry. The entry contains 8290 atoms, of which 0 are hydrogens and 0 are deuteriums.

In the tables below, the AltConf column contains the number of residues with at least one atom in alternate conformation and the Trace column contains the number of residues modelled with at most 2 atoms.

- Molecule 1 is a protein called Poliovirus receptor.

Mol	Chain	Residues	Atoms					AltConf	Trace
			Total	C	N	O	S		
1	R	213	1638	1038	281	310	9	0	0

There are 5 discrepancies between the modelled and reference sequences:

Chain	Residue	Modelled	Actual	Comment	Reference
R	105	ASP	ASN	engineered mutation	UNP P15151
R	120	SER	ASN	engineered mutation	UNP P15151
R	188	GLN	ASN	engineered mutation	UNP P15151
R	218	GLN	ASN	engineered mutation	UNP P15151
R	237	SER	ASN	engineered mutation	UNP P15151

- Molecule 2 is a protein called Poliovirus Type3 peptide.

Mol	Chain	Residues	Atoms				AltConf	Trace
			Total	C	N	O		
2	0	4	30	19	4	7	0	0

- Molecule 3 is a protein called protein VP1.

Mol	Chain	Residues	Atoms					AltConf	Trace
			Total	C	N	O	S		
3	1	279	2214	1408	383	416	7	0	0

- Molecule 4 is a protein called protein VP2.

Mol	Chain	Residues	Atoms					AltConf	Trace
			Total	C	N	O	S		
4	2	266	2088	1330	354	392	12	0	0

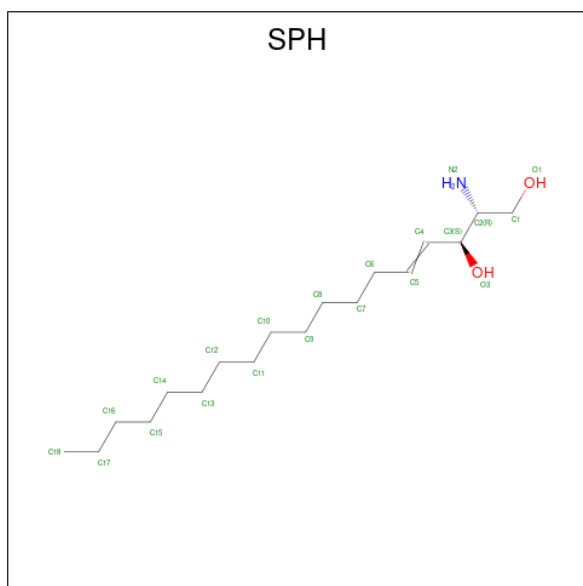
- Molecule 5 is a protein called protein VP4.

Mol	Chain	Residues	Atoms				AltConf	Trace
			Total	C	N	O		
5	4	62	472	291	79	102	0	0

- Molecule 6 is a protein called protein VP3.

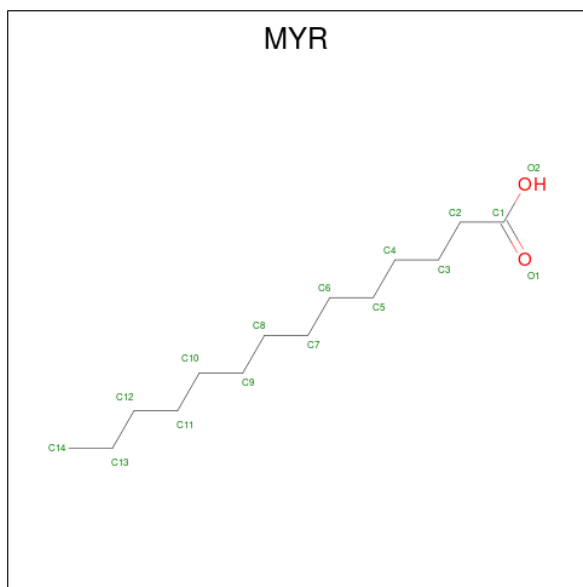
Mol	Chain	Residues	Atoms					AltConf	Trace
			Total	C	N	O	S		
6	3	235	1812	1150	296	348	18	0	0

- Molecule 7 is SPHINGOSINE (three-letter code: SPH) (formula: $C_{18}H_{37}NO_2$).



Mol	Chain	Residues	Atoms				AltConf
			Total	C	N	O	
7	1	1	21	18	1	2	0

- Molecule 8 is MYRISTIC ACID (three-letter code: MYR) (formula: $C_{14}H_{28}O_2$).

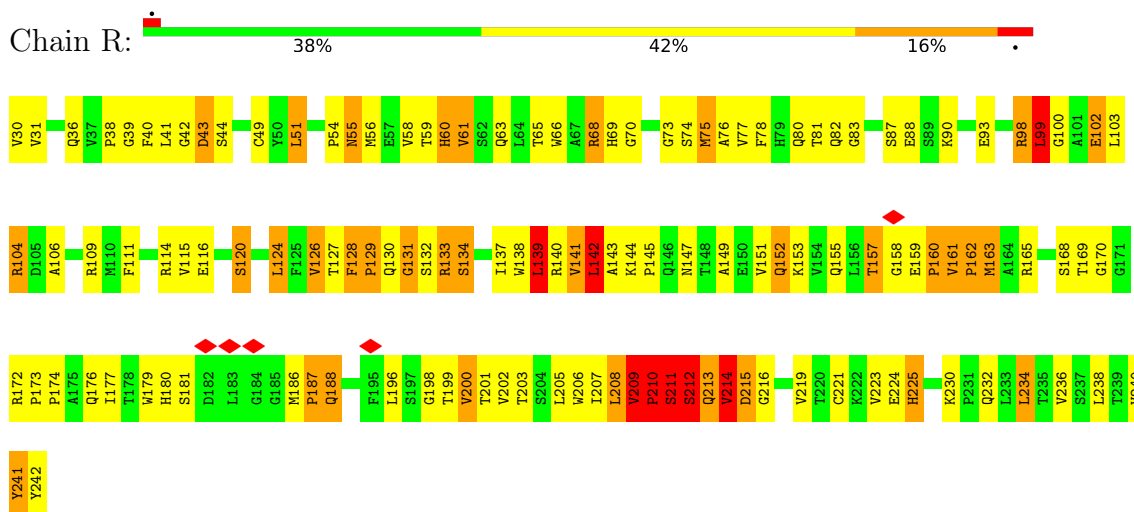


Mol	Chain	Residues	Atoms			AltConf
8	4	1	Total	C	O	0
			15	14	1	

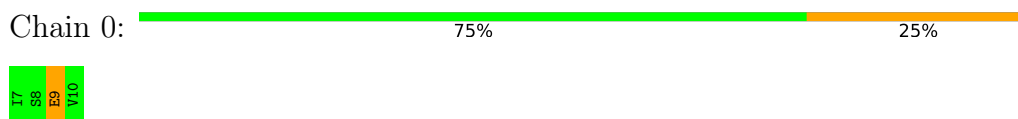
3 Residue-property plots [i](#)

These plots are drawn for all protein, RNA, DNA and oligosaccharide chains in the entry. The first graphic for a chain summarises the proportions of the various outlier classes displayed in the second graphic. The second graphic shows the sequence view annotated by issues in geometry and atom inclusion in map density. Residues are color-coded according to the number of geometric quality criteria for which they contain at least one outlier: green = 0, yellow = 1, orange = 2 and red = 3 or more. A red diamond above a residue indicates a poor fit to the EM map for this residue (all-atom inclusion < 40%). Stretches of 2 or more consecutive residues without any outlier are shown as a green connector. Residues present in the sample, but not in the model, are shown in grey.

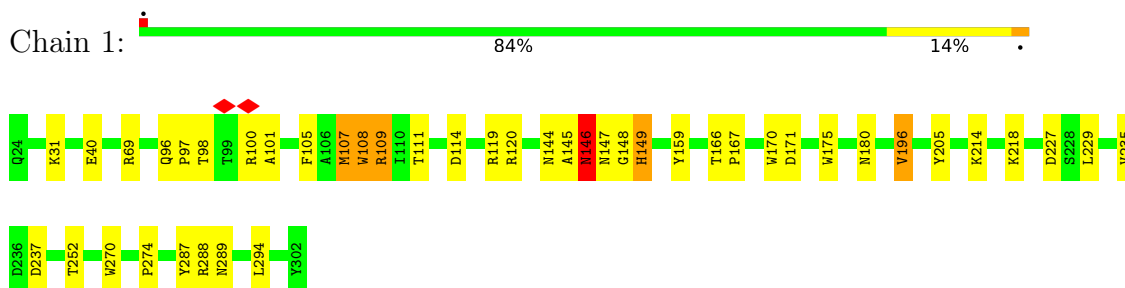
- Molecule 1: Poliovirus receptor



- Molecule 2: Poliovirus Type3 peptide

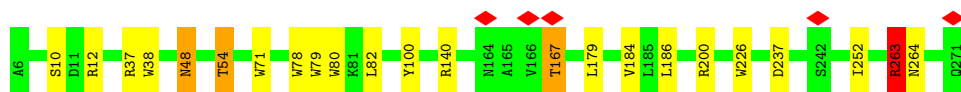


- Molecule 3: protein VP1



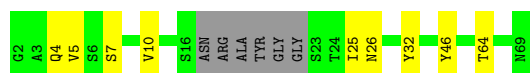
- Molecule 4: protein VP2





- Molecule 5: protein VP4

Chain 4: 78% 13% 9%



- Molecule 6: protein VP3

Chain 3: 89% 10%



4 Experimental information

Property	Value	Source
EM reconstruction method	SINGLE PARTICLE	Depositor
Imposed symmetry	POINT, I	Depositor
Number of particles used	Not provided	
Resolution determination method	Not provided	
CTF correction method	Not provided	
Microscope	FEI/PHILIPS CM300FEG/T	Depositor
Voltage (kV)	300	Depositor
Electron dose ($e^-/\text{\AA}^2$)	20	Depositor
Minimum defocus (nm)	985	Depositor
Maximum defocus (nm)	2749	Depositor
Magnification	47000	Depositor
Image detector	KODAK SO-163 FILM	Depositor
Maximum map value	35.177	Depositor
Minimum map value	-8.472	Depositor
Average map value	1.780	Depositor
Map value standard deviation	5.768	Depositor
Recommended contour level	7.55	Depositor
Map size (\AA)	572.88, 572.88, 572.88	wwPDB
Map dimensions	217, 217, 217	wwPDB
Map angles ($^\circ$)	90.0, 90.0, 90.0	wwPDB
Pixel spacing (\AA)	2.64, 2.64, 2.64	Depositor

5 Model quality i

5.1 Standard geometry i

Bond lengths and bond angles in the following residue types are not validated in this section: MYR, SPH

The Z score for a bond length (or angle) is the number of standard deviations the observed value is removed from the expected value. A bond length (or angle) with $|Z| > 5$ is considered an outlier worth inspection. RMSZ is the root-mean-square of all Z scores of the bond lengths (or angles).

Mol	Chain	Bond lengths		Bond angles	
		RMSZ	# Z >5	RMSZ	# Z >5
1	R	0.41	0/1678	0.77	4/2289 (0.2%)
2	0	1.66	0/29	1.63	1/38 (2.6%)
3	1	0.76	0/2278	1.37	25/3111 (0.8%)
4	2	0.78	0/2146	1.42	27/2926 (0.9%)
5	4	0.77	0/479	1.31	1/647 (0.2%)
6	3	0.76	0/1857	1.34	17/2533 (0.7%)
All	All	0.72	0/8467	1.28	75/11544 (0.6%)

Chiral center outliers are detected by calculating the chiral volume of a chiral center and verifying if the center is modelled as a planar moiety or with the opposite hand. A planarity outlier is detected by checking planarity of atoms in a peptide group, atoms in a mainchain group or atoms of a sidechain that are expected to be planar.

Mol	Chain	#Chirality outliers	#Planarity outliers
1	R	1	5

There are no bond length outliers.

All (75) bond angle outliers are listed below:

Mol	Chain	Res	Type	Atoms	Z	Observed(°)	Ideal(°)
3	1	107	MET	CG-SD-CE	-9.67	84.73	100.20
6	3	85	LEU	CA-CB-CG	8.78	135.50	115.30
1	R	211	SER	O-C-N	-8.59	108.96	122.70
4	2	200	ARG	NE-CZ-NH1	8.43	124.52	120.30
4	2	78	TRP	CD1-CG-CD2	8.40	113.02	106.30
3	1	170	TRP	CD1-CG-CD2	8.38	113.00	106.30
4	2	226	TRP	CD1-CG-CD2	8.04	112.73	106.30
4	2	79	TRP	CD1-CG-CD2	7.73	112.48	106.30
3	1	175	TRP	CD1-CG-CD2	7.72	112.48	106.30
4	2	38	TRP	CD1-CG-CD2	7.63	112.41	106.30

Continued on next page...

Continued from previous page...

Mol	Chain	Res	Type	Atoms	Z	Observed(°)	Ideal(°)
6	3	170	TRP	CE2-CD2-CG	-7.50	101.30	107.30
6	3	170	TRP	CD1-CG-CD2	7.45	112.26	106.30
4	2	79	TRP	CE2-CD2-CG	-7.43	101.36	107.30
4	2	80	TRP	CD1-CG-CD2	7.42	112.24	106.30
3	1	69	ARG	NE-CZ-NH1	7.41	124.01	120.30
3	1	170	TRP	CE2-CD2-CG	-7.31	101.45	107.30
4	2	78	TRP	CE2-CD2-CG	-7.28	101.47	107.30
3	1	108	TRP	CD1-CG-CD2	7.14	112.01	106.30
3	1	175	TRP	CE2-CD2-CG	-7.07	101.65	107.30
4	2	226	TRP	CE2-CD2-CG	-6.93	101.75	107.30
6	3	110	TRP	CD1-CG-CD2	6.93	111.84	106.30
5	4	46	TYR	CB-CG-CD2	-6.90	116.86	121.00
3	1	108	TRP	CE2-CD2-CG	-6.89	101.78	107.30
4	2	80	TRP	CE2-CD2-CG	-6.79	101.86	107.30
4	2	100	TYR	CB-CG-CD2	-6.77	116.94	121.00
4	2	38	TRP	CE2-CD2-CG	-6.74	101.91	107.30
3	1	149	HIS	CA-CB-CG	-6.73	102.16	113.60
3	1	270	TRP	CE2-CD2-CG	-6.73	101.92	107.30
6	3	110	TRP	CE2-CD2-CG	-6.70	101.94	107.30
3	1	270	TRP	CD1-CG-CD2	6.64	111.61	106.30
4	2	71	TRP	CD1-CG-CD2	6.51	111.51	106.30
6	3	156	TRP	CD1-CG-CD2	6.48	111.48	106.30
6	3	62	ARG	NE-CZ-NH1	6.46	123.53	120.30
4	2	71	TRP	CE2-CD2-CG	-6.43	102.16	107.30
4	2	237	ASP	CB-CG-OD2	-6.28	112.65	118.30
3	1	288	ARG	NE-CZ-NH2	-6.28	117.16	120.30
1	R	99	LEU	CA-CB-CG	6.23	129.62	115.30
3	1	144	ASN	CA-C-N	-6.00	103.99	117.20
3	1	171	ASP	CB-CG-OD1	5.95	123.65	118.30
6	3	156	TRP	CE2-CD2-CG	-5.91	102.57	107.30
1	R	211	SER	CA-C-N	5.89	130.16	117.20
6	3	177	ARG	NE-CZ-NH1	5.81	123.20	120.30
3	1	120	ARG	NE-CZ-NH1	5.75	123.17	120.30
4	2	237	ASP	CB-CG-OD1	5.73	123.46	118.30
3	1	218	LYS	CB-CG-CD	-5.71	96.76	111.60
4	2	200	ARG	NE-CZ-NH2	-5.66	117.47	120.30
3	1	109	ARG	NE-CZ-NH1	5.62	123.11	120.30
6	3	35	ASP	CB-CG-OD1	5.60	123.34	118.30
4	2	54	THR	CA-CB-CG2	-5.56	104.61	112.40
4	2	140	ARG	NE-CZ-NH1	5.53	123.06	120.30
6	3	223	ARG	NE-CZ-NH2	-5.50	117.55	120.30
4	2	79	TRP	CB-CG-CD1	-5.45	119.91	127.00

Continued on next page...

Continued from previous page...

Mol	Chain	Res	Type	Atoms	Z	Observed(°)	Ideal(°)
3	1	288	ARG	CG-CD-NE	-5.38	100.49	111.80
4	2	78	TRP	CG-CD1-NE1	-5.38	104.72	110.10
6	3	170	TRP	CG-CD2-CE3	5.38	138.74	133.90
6	3	218	ASN	CB-CG-ND2	5.38	129.61	116.70
3	1	108	TRP	CG-CD2-CE3	5.34	138.71	133.90
6	3	170	TRP	CB-CG-CD1	-5.34	120.06	127.00
4	2	226	TRP	CG-CD1-NE1	-5.32	104.78	110.10
3	1	170	TRP	CG-CD1-NE1	-5.27	104.83	110.10
1	R	209	VAL	N-CA-C	5.27	125.22	111.00
6	3	189	TYR	CB-CG-CD1	-5.26	117.84	121.00
3	1	175	TRP	CB-CG-CD1	-5.20	120.25	127.00
4	2	263	ARG	CD-NE-CZ	-5.19	116.33	123.60
6	3	62	ARG	NE-CZ-NH2	-5.15	117.73	120.30
3	1	196	VAL	CG1-CB-CG2	-5.14	102.68	110.90
3	1	119	ARG	NE-CZ-NH1	5.12	122.86	120.30
4	2	186	LEU	CA-CB-CG	5.12	127.07	115.30
4	2	78	TRP	CG-CD2-CE3	5.09	138.48	133.90
2	0	9	GLU	CA-CB-CG	5.08	124.58	113.40
3	1	270	TRP	CB-CG-CD1	-5.08	120.40	127.00
4	2	54	THR	CB-CA-C	-5.07	97.91	111.60
4	2	37	ARG	NE-CZ-NH1	5.05	122.83	120.30
6	3	194	TYR	CB-CG-CD1	-5.03	117.98	121.00
3	1	175	TRP	CG-CD1-NE1	-5.01	105.09	110.10

All (1) chirality outliers are listed below:

Mol	Chain	Res	Type	Atom
1	R	143	ALA	CA

All (5) planarity outliers are listed below:

Mol	Chain	Res	Type	Group
1	R	142	LEU	Peptide
1	R	210	PRO	Peptide
1	R	211	SER	Peptide
1	R	212	SER	Mainchain
1	R	213	GLN	Peptide

5.2 Too-close contacts [i](#)

In the following table, the Non-H and H(model) columns list the number of non-hydrogen atoms and hydrogen atoms in the chain respectively. The H(added) column lists the number of hydrogen atoms added and optimized by MolProbity. The Clashes column lists the number of clashes within the asymmetric unit, whereas Symm-Clashes lists symmetry-related clashes.

Mol	Chain	Non-H	H(model)	H(added)	Clashes	Symm-Clashes
1	R	1638	0	1618	287	0
2	0	30	0	30	1	0
3	1	2214	0	2150	121	0
4	2	2088	0	2005	6	0
5	4	472	0	453	5	0
6	3	1812	0	1791	63	0
7	1	21	0	37	3	0
8	4	15	0	27	1	0
All	All	8290	0	8111	311	0

The all-atom clashscore is defined as the number of clashes found per 1000 atoms (including hydrogen atoms). The all-atom clashscore for this structure is 19.

All (311) close contacts within the same asymmetric unit are listed below, sorted by their clash magnitude.

Atom-1	Atom-2	Interatomic distance (Å)	Clash overlap (Å)
1:R:30:VAL:CG2	3:1:101:ALA:HB2	1.33	1.57
1:R:73:GLY:CA	6:3:97:HIS:CE1	1.83	1.57
1:R:73:GLY:HA3	6:3:97:HIS:CE1	1.05	1.55
1:R:132:SER:HB2	3:1:107:MET:SD	1.55	1.47
1:R:130:GLN:NE2	3:1:105:PHE:CE2	1.81	1.46
1:R:132:SER:CB	3:1:107:MET:SD	2.08	1.40
1:R:81:THR:CG2	3:1:235:VAL:HG13	1.56	1.34
1:R:87:SER:OG	6:3:91:PHE:HE2	1.11	1.33
1:R:30:VAL:CG2	3:1:101:ALA:CB	2.07	1.29
1:R:128:PHE:HE2	3:1:108:TRP:NE1	1.28	1.28
1:R:116:GLU:OE1	6:3:59:SER:CB	1.84	1.25
1:R:128:PHE:CZ	3:1:114:ASP:OD2	1.89	1.25
1:R:81:THR:HG23	3:1:235:VAL:CG1	1.67	1.24
1:R:61:VAL:HG21	3:1:109:ARG:NE	1.51	1.23
1:R:128:PHE:CE2	3:1:114:ASP:OD2	1.91	1.23
1:R:87:SER:OG	6:3:91:PHE:CE2	1.82	1.23
1:R:73:GLY:O	6:3:96:SER:OG	1.56	1.22
1:R:132:SER:HB2	3:1:107:MET:CE	1.71	1.21
1:R:30:VAL:CB	3:1:101:ALA:HB2	1.70	1.20

Continued on next page...

Continued from previous page...

Atom-1	Atom-2	Interatomic distance (Å)	Clash overlap (Å)
1:R:130:GLN:NE2	3:1:105:PHE:CD2	2.10	1.20
1:R:61:VAL:CG2	3:1:109:ARG:HE	1.54	1.19
1:R:130:GLN:CA	3:1:107:MET:H	1.57	1.18
1:R:81:THR:CG2	3:1:235:VAL:CG1	2.18	1.17
1:R:114:ARG:NH1	6:3:59:SER:OG	1.77	1.17
1:R:130:GLN:HA	3:1:107:MET:N	1.57	1.17
1:R:81:THR:CG2	3:1:235:VAL:CB	2.20	1.15
1:R:43:ASP:HB2	1:R:44:SER:CA	1.79	1.13
1:R:161:VAL:HB	1:R:163:MET:HB2	1.21	1.13
1:R:133:ARG:HB2	3:1:167:PRO:O	1.48	1.13
1:R:73:GLY:CA	6:3:97:HIS:NE2	2.10	1.13
1:R:73:GLY:CA	6:3:230:HIS:CE1	2.33	1.12
1:R:81:THR:HG21	3:1:235:VAL:CA	1.79	1.11
1:R:128:PHE:CE2	3:1:108:TRP:NE1	2.18	1.11
1:R:132:SER:O	3:1:166:THR:HB	1.47	1.11
1:R:128:PHE:HZ	3:1:111:THR:CG2	1.62	1.10
1:R:74:SER:HB3	6:3:230:HIS:CD2	1.88	1.09
1:R:73:GLY:N	6:3:97:HIS:CE1	2.21	1.08
1:R:132:SER:CA	3:1:107:MET:SD	2.41	1.08
1:R:81:THR:CG2	3:1:235:VAL:HA	1.84	1.07
1:R:43:ASP:CB	1:R:44:SER:HA	1.85	1.06
1:R:81:THR:CB	3:1:235:VAL:CG1	2.23	1.06
1:R:128:PHE:CZ	3:1:111:THR:CG2	2.38	1.06
1:R:162:PRO:HD2	1:R:163:MET:HA	1.30	1.06
1:R:81:THR:HG21	3:1:235:VAL:HA	1.38	1.05
1:R:30:VAL:HG21	3:1:101:ALA:CB	1.75	1.04
1:R:81:THR:CB	3:1:235:VAL:HG13	1.86	1.04
1:R:61:VAL:HG21	3:1:109:ARG:HE	0.87	1.03
1:R:128:PHE:CZ	3:1:114:ASP:CG	2.32	1.03
1:R:128:PHE:O	3:1:108:TRP:HA	1.59	1.02
1:R:73:GLY:O	6:3:96:SER:CB	2.07	1.02
1:R:73:GLY:N	6:3:97:HIS:NE2	2.08	1.02
1:R:74:SER:HB3	6:3:230:HIS:NE2	1.75	1.02
1:R:73:GLY:HA2	6:3:230:HIS:CE1	1.95	1.01
1:R:81:THR:CG2	3:1:235:VAL:CA	2.38	1.00
1:R:98:ARG:HD3	1:R:104:ARG:NH2	1.75	1.00
1:R:98:ARG:HD3	1:R:104:ARG:HH21	1.21	1.00
1:R:116:GLU:OE1	6:3:59:SER:OG	1.80	0.99
1:R:128:PHE:CE1	3:1:114:ASP:OD1	2.17	0.98
1:R:177:ILE:HD12	1:R:205:LEU:HB2	1.45	0.98
1:R:87:SER:CB	6:3:91:PHE:HE2	1.76	0.98

Continued on next page...

Continued from previous page...

Atom-1	Atom-2	Interatomic distance (Å)	Clash overlap (Å)
1:R:128:PHE:CZ	3:1:111:THR:HG21	1.98	0.97
1:R:30:VAL:HG21	3:1:101:ALA:HB2	1.00	0.97
1:R:73:GLY:C	6:3:230:HIS:CE1	2.38	0.97
1:R:116:GLU:OE1	6:3:59:SER:HB2	1.63	0.96
1:R:81:THR:HG23	3:1:235:VAL:HG13	0.96	0.96
1:R:132:SER:N	3:1:107:MET:SD	2.39	0.95
1:R:54:PRO:HA	1:R:55:ASN:HB2	1.44	0.95
1:R:30:VAL:HB	3:1:101:ALA:CB	1.97	0.95
1:R:115:VAL:HG11	1:R:142:LEU:HD21	1.49	0.94
1:R:130:GLN:HA	3:1:107:MET:H	0.77	0.93
1:R:129:PRO:O	3:1:107:MET:O	1.86	0.92
1:R:73:GLY:HA3	6:3:97:HIS:NE2	1.75	0.92
1:R:73:GLY:CA	6:3:97:HIS:HE1	1.71	0.92
1:R:128:PHE:CE2	3:1:108:TRP:CD1	2.58	0.91
1:R:83:GLY:HA3	3:1:227:ASP:O	1.71	0.91
1:R:132:SER:HB2	3:1:107:MET:HE1	1.53	0.91
1:R:73:GLY:HA3	6:3:97:HIS:ND1	1.84	0.90
1:R:30:VAL:HG23	3:1:101:ALA:CB	2.00	0.90
1:R:68:ARG:HD2	1:R:76:ALA:HB3	1.52	0.89
1:R:162:PRO:CD	1:R:163:MET:HA	2.03	0.88
1:R:128:PHE:HE2	3:1:108:TRP:HE1	0.90	0.88
1:R:130:GLN:CG	3:1:105:PHE:O	2.23	0.87
1:R:43:ASP:HB2	1:R:44:SER:HA	0.91	0.87
1:R:141:VAL:HG13	1:R:142:LEU:HG	1.56	0.86
1:R:128:PHE:CZ	3:1:111:THR:HG22	2.08	0.85
1:R:75:MET:CE	6:3:92:ASP:CA	1.91	0.85
1:R:114:ARG:HD2	6:3:59:SER:CB	2.06	0.85
1:R:74:SER:CB	6:3:230:HIS:NE2	2.39	0.84
1:R:73:GLY:HA3	6:3:97:HIS:HE1	1.21	0.84
1:R:116:GLU:OE1	6:3:59:SER:CA	2.25	0.83
1:R:30:VAL:CB	3:1:101:ALA:CB	2.43	0.83
1:R:132:SER:O	3:1:166:THR:CB	2.28	0.81
1:R:115:VAL:CG1	1:R:142:LEU:HD21	2.10	0.81
1:R:73:GLY:HA2	6:3:230:HIS:NE2	1.96	0.80
1:R:128:PHE:CD2	3:1:108:TRP:CD1	2.69	0.80
1:R:54:PRO:CA	1:R:55:ASN:HB2	2.11	0.80
1:R:75:MET:CE	6:3:92:ASP:HA	2.11	0.79
1:R:126:VAL:HB	3:1:109:ARG:HH21	1.46	0.79
1:R:87:SER:CB	6:3:91:PHE:CE2	2.58	0.78
1:R:30:VAL:HB	3:1:101:ALA:HB2	1.58	0.78
1:R:75:MET:HE2	6:3:92:ASP:CA	1.41	0.78

Continued on next page...

Continued from previous page...

Atom-1	Atom-2	Interatomic distance (Å)	Clash overlap (Å)
1:R:83:GLY:CA	3:1:227:ASP:O	2.31	0.77
1:R:75:MET:HE2	6:3:92:ASP:N	1.96	0.77
1:R:114:ARG:HD2	6:3:59:SER:OG	1.83	0.77
1:R:215:ASP:O	1:R:238:LEU:HB3	1.85	0.77
1:R:114:ARG:CD	6:3:59:SER:OG	2.32	0.77
1:R:30:VAL:HG21	3:1:101:ALA:CA	2.15	0.77
1:R:63:GLN:HG2	1:R:81:THR:HA	1.69	0.75
1:R:141:VAL:HG13	1:R:142:LEU:N	2.01	0.75
1:R:61:VAL:HG21	3:1:109:ARG:CD	2.17	0.74
1:R:81:THR:HG23	3:1:235:VAL:HA	1.69	0.74
1:R:128:PHE:CZ	3:1:114:ASP:OD1	2.39	0.74
1:R:30:VAL:CG2	3:1:101:ALA:CA	2.66	0.74
1:R:173:PRO:HG2	1:R:225:HIS:HE1	1.52	0.74
1:R:132:SER:C	3:1:107:MET:SD	2.66	0.73
1:R:133:ARG:HD2	3:1:105:PHE:CZ	2.23	0.73
1:R:73:GLY:C	6:3:96:SER:OG	2.28	0.72
1:R:80:GLN:HG2	1:R:98:ARG:HG2	1.71	0.72
1:R:129:PRO:C	3:1:107:MET:O	2.28	0.71
1:R:128:PHE:HB3	1:R:129:PRO:HD3	1.70	0.71
1:R:68:ARG:HD2	1:R:76:ALA:CB	2.21	0.70
1:R:124:LEU:HA	1:R:134:SER:HB2	1.73	0.70
1:R:165:ARG:HG3	1:R:206:TRP:HB3	1.73	0.69
1:R:104:ARG:HD2	1:R:106:ALA:HB2	1.74	0.69
1:R:132:SER:OG	3:1:107:MET:SD	2.50	0.69
1:R:73:GLY:HA2	6:3:230:HIS:CD2	2.29	0.68
1:R:73:GLY:O	6:3:96:SER:HB2	1.92	0.68
1:R:63:GLN:HG2	3:1:235:VAL:CG1	2.25	0.67
1:R:90:LYS:NZ	6:3:94:ARG:HH12	1.92	0.67
1:R:98:ARG:HG3	1:R:99:LEU:H	1.60	0.67
1:R:126:VAL:HB	3:1:109:ARG:NH2	2.10	0.66
1:R:130:GLN:HG3	3:1:105:PHE:O	1.52	0.66
1:R:81:THR:CA	3:1:235:VAL:HG13	2.25	0.66
1:R:59:THR:HG23	1:R:127:THR:HG23	1.78	0.65
1:R:41:LEU:HB3	1:R:143:ALA:HB3	1.78	0.65
1:R:173:PRO:HG2	1:R:225:HIS:CE1	2.30	0.65
1:R:82:GLN:HB3	3:1:229:LEU:H	1.60	0.65
1:R:240:VAL:O	1:R:241:TYR:HD2	1.79	0.65
1:R:77:VAL:HB	6:3:91:PHE:HZ	1.62	0.65
1:R:41:LEU:HG	1:R:142:LEU:HD23	1.78	0.65
1:R:128:PHE:CE1	3:1:111:THR:HG21	2.31	0.64
1:R:83:GLY:HA3	3:1:214:LYS:HE3	1.80	0.64

Continued on next page...

Continued from previous page...

Atom-1	Atom-2	Interatomic distance (Å)	Clash overlap (Å)
1:R:81:THR:HG23	3:1:235:VAL:CA	2.19	0.64
1:R:157:THR:OG1	1:R:158:GLY:HA2	1.97	0.63
1:R:159:GLU:N	1:R:160:PRO:HD3	2.13	0.63
1:R:215:ASP:O	1:R:238:LEU:CB	2.45	0.63
1:R:139:LEU:HD22	1:R:140:ARG:HG3	1.80	0.62
1:R:66:TRP:HB2	1:R:78:PHE:HB3	1.81	0.62
1:R:81:THR:HG23	3:1:235:VAL:CB	2.12	0.62
1:R:132:SER:OG	3:1:107:MET:HB3	2.00	0.62
1:R:215:ASP:HB3	1:R:216:GLY:CA	2.30	0.62
1:R:149:ALA:HB2	1:R:234:LEU:HD12	1.81	0.61
1:R:61:VAL:CG2	3:1:109:ARG:NE	2.32	0.61
1:R:30:VAL:HB	3:1:101:ALA:HB1	1.83	0.60
1:R:151:VAL:HA	1:R:163:MET:O	2.01	0.60
1:R:162:PRO:HD3	1:R:209:VAL:O	2.01	0.60
1:R:132:SER:CB	3:1:107:MET:CE	2.60	0.60
1:R:141:VAL:HG13	1:R:142:LEU:H	1.66	0.59
1:R:181:SER:HB3	1:R:219:VAL:HG23	1.85	0.59
1:R:128:PHE:HD2	3:1:108:TRP:CD1	2.19	0.59
1:R:162:PRO:HD3	1:R:208:LEU:H	1.66	0.59
1:R:188:GLN:HB3	1:R:208:LEU:O	2.03	0.58
1:R:73:GLY:C	6:3:230:HIS:HE1	2.05	0.58
1:R:87:SER:HB2	6:3:91:PHE:CE2	2.37	0.58
1:R:215:ASP:HB3	1:R:216:GLY:HA2	1.85	0.58
1:R:65:THR:HB	1:R:124:LEU:HG	1.86	0.57
1:R:151:VAL:HG21	1:R:238:LEU:HA	1.86	0.57
1:R:68:ARG:HG2	1:R:70:GLY:HA3	1.85	0.57
1:R:214:VAL:HG22	1:R:215:ASP:H	1.67	0.57
1:R:81:THR:CA	3:1:235:VAL:CG1	2.81	0.57
1:R:131:GLY:HA2	1:R:133:ARG:HD3	1.86	0.57
1:R:73:GLY:HA3	6:3:230:HIS:CE1	2.38	0.56
1:R:132:SER:O	3:1:107:MET:SD	2.63	0.56
3:1:98:THR:OG1	3:1:100:ARG:HG2	2.06	0.55
1:R:81:THR:HA	3:1:235:VAL:HG13	1.87	0.55
3:1:40:GLU:HB3	5:4:64:THR:HB	1.87	0.55
1:R:172:ARG:HA	1:R:201:THR:H	1.70	0.55
1:R:120:SER:HB3	1:R:138:TRP:CG	2.42	0.55
1:R:41:LEU:HD22	1:R:42:GLY:H	1.72	0.54
1:R:80:GLN:CG	1:R:98:ARG:HG2	2.38	0.54
1:R:147:ASN:ND2	1:R:223:VAL:HG21	2.23	0.54
1:R:73:GLY:N	6:3:97:HIS:HE1	1.92	0.54
1:R:49:CYS:HB2	1:R:66:TRP:HZ2	1.73	0.53

Continued on next page...

Continued from previous page...

Atom-1	Atom-2	Interatomic distance (Å)	Clash overlap (Å)
1:R:73:GLY:CA	6:3:230:HIS:NE2	2.63	0.53
1:R:130:GLN:CD	3:1:105:PHE:O	2.46	0.53
1:R:152:GLN:O	1:R:163:MET:HB3	2.08	0.53
1:R:40:PHE:HZ	1:R:144:LYS:HD3	1.72	0.53
3:1:205:TYR:HD1	7:1:1000:SPH:H11	1.73	0.53
1:R:161:VAL:HB	1:R:163:MET:CB	2.14	0.53
1:R:42:GLY:N	1:R:43:ASP:HA	2.22	0.53
1:R:36:GLN:NE2	1:R:137:ILE:HG13	2.23	0.52
1:R:30:VAL:HG23	3:1:101:ALA:HA	1.91	0.52
1:R:141:VAL:CG1	1:R:142:LEU:N	2.72	0.52
1:R:80:GLN:O	1:R:98:ARG:NH2	2.42	0.52
1:R:75:MET:HE1	6:3:92:ASP:CA	1.89	0.52
1:R:30:VAL:HG23	3:1:101:ALA:CA	2.35	0.52
1:R:127:THR:HG22	1:R:129:PRO:HD2	1.91	0.52
1:R:130:GLN:CB	3:1:107:MET:N	2.72	0.52
1:R:132:SER:OG	3:1:107:MET:CB	2.58	0.51
1:R:73:GLY:C	6:3:97:HIS:NE2	2.63	0.51
1:R:128:PHE:HD2	3:1:108:TRP:HD1	1.55	0.51
1:R:93:GLU:HB3	1:R:109:ARG:HB3	1.92	0.51
1:R:63:GLN:CD	3:1:235:VAL:HG12	2.30	0.51
1:R:187:PRO:O	1:R:188:GLN:HG3	2.11	0.51
3:1:205:TYR:CD1	7:1:1000:SPH:H11	2.45	0.51
1:R:73:GLY:N	1:R:74:SER:HA	2.25	0.51
1:R:98:ARG:C	1:R:100:GLY:H	2.13	0.50
1:R:169:THR:HA	1:R:202:VAL:HG23	1.93	0.50
3:1:274:PRO:HB2	4:2:184:VAL:HB	1.94	0.50
6:3:87:LEU:HD11	6:3:114:LEU:HD12	1.93	0.50
1:R:30:VAL:CG2	3:1:101:ALA:HB1	2.31	0.50
1:R:82:GLN:CB	3:1:229:LEU:H	2.24	0.50
1:R:75:MET:O	6:3:93:PRO:HB3	2.12	0.50
1:R:73:GLY:C	6:3:230:HIS:NE2	2.64	0.50
1:R:81:THR:HA	3:1:235:VAL:CG1	2.41	0.49
1:R:158:GLY:HA3	1:R:159:GLU:HB3	1.94	0.49
1:R:73:GLY:HA2	6:3:230:HIS:CG	2.48	0.49
1:R:102:GLU:HG3	1:R:104:ARG:NH1	2.28	0.49
1:R:104:ARG:HA	1:R:104:ARG:HD3	1.57	0.49
1:R:130:GLN:NE2	3:1:105:PHE:CZ	2.55	0.49
1:R:114:ARG:NH1	6:3:59:SER:CB	2.72	0.48
1:R:30:VAL:CG2	3:1:101:ALA:HA	2.43	0.48
1:R:116:GLU:CD	6:3:59:SER:HG	2.13	0.48
1:R:98:ARG:CD	1:R:104:ARG:NH2	2.64	0.48

Continued on next page...

Continued from previous page...

Atom-1	Atom-2	Interatomic distance (Å)	Clash overlap (Å)
1:R:141:VAL:CG1	1:R:142:LEU:HG	2.34	0.48
1:R:155:GLN:NE2	1:R:212:SER:H	2.11	0.48
1:R:114:ARG:CD	6:3:59:SER:HG	2.26	0.48
1:R:145:PRO:HA	1:R:170:GLY:O	2.12	0.48
1:R:73:GLY:O	6:3:230:HIS:HE1	1.97	0.47
1:R:143:ALA:O	1:R:225:HIS:NE2	2.47	0.47
3:1:145:ALA:O	3:1:146:ASN:HB2	2.14	0.47
1:R:224:GLU:O	1:R:225:HIS:CB	2.62	0.47
1:R:179:TRP:CZ3	1:R:219:VAL:HG22	2.49	0.47
1:R:126:VAL:CB	3:1:109:ARG:NH2	2.78	0.47
1:R:83:GLY:CA	3:1:214:LYS:HE3	2.44	0.47
1:R:180:HIS:HA	1:R:186:MET:HG3	1.96	0.47
1:R:240:VAL:O	1:R:241:TYR:CD2	2.64	0.47
6:3:64:THR:O	6:3:67:MET:HG2	2.14	0.47
1:R:99:LEU:O	3:1:229:LEU:HD23	2.15	0.47
3:1:196:VAL:HG21	7:1:1000:SPH:H141	1.95	0.47
1:R:170:GLY:HA2	1:R:200:VAL:HG13	1.96	0.47
1:R:186:MET:O	1:R:188:GLN:N	2.48	0.47
1:R:128:PHE:CD2	3:1:108:TRP:HD1	2.24	0.47
2:0:9:GLU:HA	5:4:5:VAL:O	2.15	0.47
1:R:128:PHE:HB3	1:R:129:PRO:CD	2.43	0.46
1:R:161:VAL:HG12	1:R:208:LEU:HB2	1.97	0.46
3:1:146:ASN:OD1	3:1:149:HIS:HE1	1.98	0.46
1:R:90:LYS:HZ1	6:3:94:ARG:HH12	1.63	0.46
1:R:60:HIS:O	1:R:128:PHE:N	2.26	0.46
1:R:152:GLN:HB2	1:R:153:LYS:HA	1.97	0.46
5:4:7:SER:HA	5:4:26:ASN:HD22	1.80	0.46
1:R:99:LEU:HD12	3:1:227:ASP:HB3	1.98	0.46
1:R:82:GLN:HB3	3:1:229:LEU:N	2.28	0.46
1:R:139:LEU:HB3	1:R:140:ARG:H	1.57	0.46
3:1:147:ASN:O	3:1:252:THR:HB	2.15	0.46
1:R:157:THR:OG1	1:R:158:GLY:CA	2.64	0.45
1:R:54:PRO:CA	1:R:55:ASN:CB	2.87	0.45
1:R:31:VAL:HG12	1:R:51:LEU:HD11	1.98	0.45
1:R:61:VAL:HG21	3:1:109:ARG:HD2	1.97	0.45
1:R:98:ARG:O	1:R:99:LEU:HD22	2.15	0.45
1:R:188:GLN:O	1:R:207:ILE:HG22	2.16	0.45
1:R:241:TYR:HA	1:R:242:TYR:C	2.37	0.45
1:R:131:GLY:H	3:1:107:MET:HB2	1.82	0.45
1:R:172:ARG:O	1:R:174:PRO:HD3	2.17	0.45
1:R:65:THR:HA	1:R:78:PHE:O	2.18	0.44

Continued on next page...

Continued from previous page...

Atom-1	Atom-2	Interatomic distance (Å)	Clash overlap (Å)
5:4:10:VAL:HG21	5:4:25:ILE:HD12	1.99	0.44
1:R:54:PRO:HA	1:R:55:ASN:CB	2.25	0.44
1:R:75:MET:HE2	6:3:91:PHE:C	2.35	0.44
1:R:130:GLN:CA	3:1:107:MET:N	2.38	0.44
1:R:144:LYS:HA	1:R:145:PRO:HD3	1.88	0.43
1:R:130:GLN:HE22	1:R:133:ARG:HD2	1.82	0.43
1:R:73:GLY:HA2	6:3:230:HIS:ND1	2.29	0.43
4:2:82:LEU:HD21	4:2:252:ILE:HD13	1.99	0.43
1:R:82:GLN:O	1:R:98:ARG:HG3	2.19	0.43
1:R:162:PRO:HB2	1:R:238:LEU:HG	2.00	0.43
4:2:48:ASN:ND2	6:3:170:TRP:HE1	2.16	0.43
1:R:98:ARG:CG	1:R:99:LEU:H	2.24	0.43
1:R:73:GLY:O	6:3:96:SER:C	2.57	0.43
1:R:207:ILE:HA	1:R:208:LEU:HB3	2.00	0.43
1:R:210:PRO:HB2	1:R:211:SER:H	1.68	0.43
1:R:168:SER:HB3	1:R:203:THR:HG23	2.01	0.42
1:R:177:ILE:HG22	1:R:223:VAL:HG22	2.00	0.42
1:R:99:LEU:O	3:1:229:LEU:CD2	2.68	0.42
1:R:69:HIS:N	1:R:70:GLY:HA3	2.33	0.42
1:R:61:VAL:CG2	3:1:109:ARG:CD	2.92	0.42
1:R:73:GLY:O	6:3:97:HIS:CD2	2.73	0.42
1:R:31:VAL:HG11	1:R:134:SER:HA	2.01	0.42
1:R:38:PRO:HA	1:R:39:GLY:HA3	1.66	0.42
5:4:32:TYR:HD1	8:4:1:MYR:H122	1.84	0.42
1:R:159:GLU:H	1:R:160:PRO:HD3	1.82	0.42
1:R:221:CYS:HB3	1:R:234:LEU:HG	2.02	0.42
4:2:179:LEU:HA	4:2:184:VAL:O	2.20	0.42
1:R:116:GLU:OE1	6:3:59:SER:HA	2.16	0.41
4:2:12:ARG:HH11	4:2:12:ARG:HD3	1.71	0.41
1:R:30:VAL:HG23	3:1:101:ALA:HB1	1.93	0.41
1:R:43:ASP:CB	1:R:44:SER:CA	2.66	0.41
1:R:49:CYS:HB2	1:R:66:TRP:CZ2	2.55	0.41
1:R:76:ALA:H	1:R:77:VAL:HG23	1.86	0.41
4:2:263:ARG:HB2	4:2:264:ASN:H	1.76	0.41
1:R:157:THR:CB	1:R:158:GLY:HA2	2.50	0.41
1:R:209:VAL:HA	1:R:210:PRO:HD2	1.60	0.41
3:1:159:TYR:O	3:1:180:ASN:HB3	2.21	0.41
1:R:73:GLY:C	6:3:96:SER:CB	2.82	0.41
1:R:82:GLN:HG3	3:1:229:LEU:HB2	1.91	0.40
1:R:126:VAL:HA	1:R:132:SER:HA	2.03	0.40
3:1:31:LYS:HA	3:1:31:LYS:HD3	1.77	0.40

Continued on next page...

Continued from previous page...

Atom-1	Atom-2	Interatomic distance (Å)	Clash overlap (Å)
3:1:146:ASN:HD22	3:1:148:GLY:H	1.69	0.40
1:R:126:VAL:HG11	3:1:109:ARG:HH22	1.87	0.40
1:R:186:MET:H	1:R:187:PRO:CD	2.34	0.40
1:R:186:MET:N	1:R:187:PRO:CD	2.84	0.40
3:1:96:GLN:HA	3:1:97:PRO:HD3	1.93	0.40

There are no symmetry-related clashes.

5.3 Torsion angles [i](#)

5.3.1 Protein backbone [i](#)

In the following table, the Percentiles column shows the percent Ramachandran outliers of the chain as a percentile score with respect to all PDB entries followed by that with respect to all EM entries.

The Analysed column shows the number of residues for which the backbone conformation was analysed, and the total number of residues.

Mol	Chain	Analysed	Favoured	Allowed	Outliers	Percentiles	
1	R	211/213 (99%)	137 (65%)	51 (24%)	23 (11%)	0	8
2	0	2/4 (50%)	2 (100%)	0	0	100	100
3	1	277/279 (99%)	264 (95%)	11 (4%)	2 (1%)	22	63
4	2	264/266 (99%)	251 (95%)	11 (4%)	2 (1%)	19	60
5	4	58/68 (85%)	56 (97%)	2 (3%)	0	100	100
6	3	233/235 (99%)	227 (97%)	6 (3%)	0	100	100
All	All	1045/1065 (98%)	937 (90%)	81 (8%)	27 (3%)	8	31

All (27) Ramachandran outliers are listed below:

Mol	Chain	Res	Type
1	R	55	ASN
1	R	99	LEU
1	R	141	VAL
1	R	188	GLN
1	R	210	PRO
1	R	212	SER
1	R	139	LEU

Continued on next page...

Continued from previous page...

Mol	Chain	Res	Type
1	R	198	GLY
3	1	146	ASN
4	2	167	THR
1	R	56	MET
1	R	88	GLU
1	R	131	GLY
1	R	134	SER
1	R	142	LEU
1	R	160	PRO
1	R	161	VAL
1	R	187	PRO
1	R	215	ASP
4	2	48	ASN
1	R	225	HIS
1	R	232	GLN
3	1	237	ASP
1	R	162	PRO
1	R	209	VAL
1	R	129	PRO
1	R	214	VAL

5.3.2 Protein sidechains [i](#)

In the following table, the Percentiles column shows the percent sidechain outliers of the chain as a percentile score with respect to all PDB entries followed by that with respect to all EM entries.

The Analysed column shows the number of residues for which the sidechain conformation was analysed, and the total number of residues.

Mol	Chain	Analysed	Rotameric	Outliers	Percentiles	
1	R	185/185 (100%)	151 (82%)	34 (18%)	1	9
2	0	4/4 (100%)	4 (100%)	0	100	100
3	1	241/241 (100%)	237 (98%)	4 (2%)	60	78
4	2	224/224 (100%)	220 (98%)	4 (2%)	59	77
5	4	53/56 (95%)	52 (98%)	1 (2%)	57	75
6	3	210/210 (100%)	204 (97%)	6 (3%)	42	64
All	All	917/920 (100%)	868 (95%)	49 (5%)	26	47

All (49) residues with a non-rotameric sidechain are listed below:

Mol	Chain	Res	Type
1	R	43	ASP
1	R	51	LEU
1	R	58	VAL
1	R	60	HIS
1	R	61	VAL
1	R	68	ARG
1	R	75	MET
1	R	98	ARG
1	R	99	LEU
1	R	102	GLU
1	R	103	LEU
1	R	104	ARG
1	R	111	PHE
1	R	120	SER
1	R	124	LEU
1	R	126	VAL
1	R	128	PHE
1	R	133	ARG
1	R	139	LEU
1	R	152	GLN
1	R	157	THR
1	R	163	MET
1	R	176	GLN
1	R	196	LEU
1	R	199	THR
1	R	200	VAL
1	R	208	LEU
1	R	212	SER
1	R	213	GLN
1	R	214	VAL
1	R	230	LYS
1	R	234	LEU
1	R	236	VAL
1	R	241	TYR
3	1	146	ASN
3	1	287	TYR
3	1	289	ASN
3	1	294	LEU
4	2	10	SER
4	2	54	THR
4	2	167	THR
4	2	263	ARG
5	4	4	GLN

Continued on next page...

Continued from previous page...

Mol	Chain	Res	Type
6	3	59	SER
6	3	149	MET
6	3	180	THR
6	3	208	MET
6	3	218	ASN
6	3	224	LEU

Sometimes sidechains can be flipped to improve hydrogen bonding and reduce clashes. All (19) such sidechains are listed below:

Mol	Chain	Res	Type
1	R	36	GLN
1	R	55	ASN
1	R	69	HIS
1	R	80	GLN
1	R	152	GLN
1	R	155	GLN
1	R	225	HIS
1	R	232	GLN
3	1	94	ASN
3	1	146	ASN
3	1	149	HIS
3	1	153	GLN
3	1	289	ASN
4	2	48	ASN
4	2	139	GLN
5	4	26	ASN
5	4	69	ASN
6	3	140	GLN
6	3	181	GLN

5.3.3 RNA [i](#)

There are no RNA molecules in this entry.

5.4 Non-standard residues in protein, DNA, RNA chains [i](#)

There are no non-standard protein/DNA/RNA residues in this entry.

5.5 Carbohydrates [i](#)

There are no monosaccharides in this entry.

5.6 Ligand geometry [i](#)

2 ligands are modelled in this entry.

In the following table, the Counts columns list the number of bonds (or angles) for which Mogul statistics could be retrieved, the number of bonds (or angles) that are observed in the model and the number of bonds (or angles) that are defined in the Chemical Component Dictionary. The Link column lists molecule types, if any, to which the group is linked. The Z score for a bond length (or angle) is the number of standard deviations the observed value is removed from the expected value. A bond length (or angle) with $|Z| > 2$ is considered an outlier worth inspection. RMSZ is the root-mean-square of all Z scores of the bond lengths (or angles).

Mol	Type	Chain	Res	Link	Bond lengths			Bond angles		
					Counts	RMSZ	# Z > 2	Counts	RMSZ	# Z > 2
7	SPH	1	1000	-	19,20,20	1.09	1 (5%)	18,21,21	1.96	4 (22%)
8	MYR	4	1	5	14,14,15	0.64	0	13,13,15	0.69	0

In the following table, the Chirals column lists the number of chiral outliers, the number of chiral centers analysed, the number of these observed in the model and the number defined in the Chemical Component Dictionary. Similar counts are reported in the Torsion and Rings columns. '-' means no outliers of that kind were identified.

Mol	Type	Chain	Res	Link	Chirals	Torsions	Rings
7	SPH	1	1000	-	1/1/2/4	7/21/21/21	-
8	MYR	4	1	5	-	1/11/12/13	-

All (1) bond length outliers are listed below:

Mol	Chain	Res	Type	Atoms	Z	Observed(Å)	Ideal(Å)
7	1	1000	SPH	C1-C2	3.33	1.57	1.52

All (4) bond angle outliers are listed below:

Mol	Chain	Res	Type	Atoms	Z	Observed(°)	Ideal(°)
7	1	1000	SPH	O3-C3-C2	-5.13	99.17	107.31
7	1	1000	SPH	C1-C2-C3	4.37	122.42	113.03
7	1	1000	SPH	O3-C3-C4	-3.19	102.30	110.85
7	1	1000	SPH	C9-C8-C7	-2.31	102.69	114.42

All (1) chirality outliers are listed below:

Mol	Chain	Res	Type	Atom
7	1	1000	SPH	C3

All (8) torsion outliers are listed below:

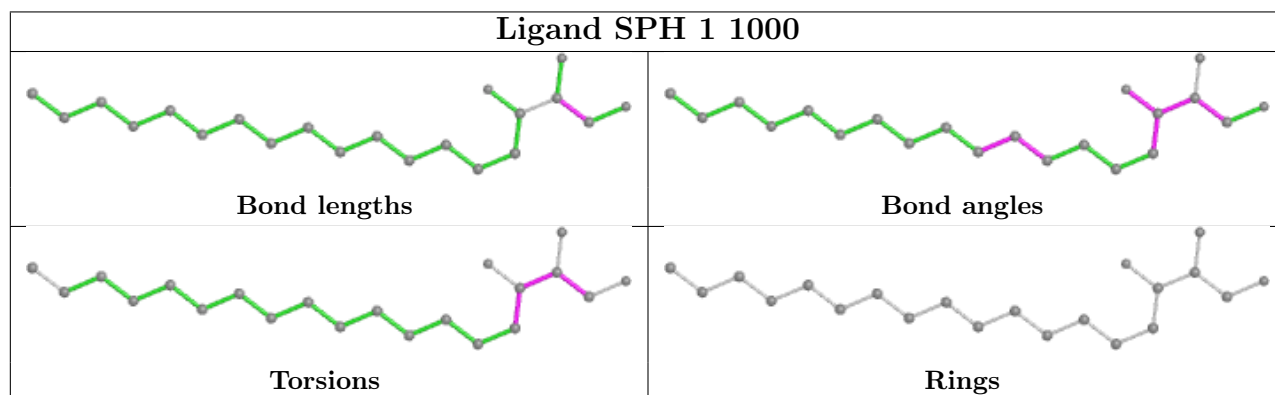
Mol	Chain	Res	Type	Atoms
7	1	1000	SPH	C1-C2-C3-O3
7	1	1000	SPH	C1-C2-C3-C4
7	1	1000	SPH	N2-C2-C3-O3
7	1	1000	SPH	N2-C2-C3-C4
7	1	1000	SPH	C2-C3-C4-C5
7	1	1000	SPH	O3-C3-C4-C5
7	1	1000	SPH	O1-C1-C2-N2
8	4	1	MYR	C4-C5-C6-C7

There are no ring outliers.

2 monomers are involved in 4 short contacts:

Mol	Chain	Res	Type	Clashes	Symm-Clashes
7	1	1000	SPH	3	0
8	4	1	MYR	1	0

The following is a two-dimensional graphical depiction of Mogul quality analysis of bond lengths, bond angles, torsion angles, and ring geometry for all instances of the Ligand of Interest. In addition, ligands with molecular weight > 250 and outliers as shown on the validation Tables will also be included. For torsion angles, if less than 5% of the Mogul distribution of torsion angles is within 10 degrees of the torsion angle in question, then that torsion angle is considered an outlier. Any bond that is central to one or more torsion angles identified as an outlier by Mogul will be highlighted in the graph. For rings, the root-mean-square deviation (RMSD) between the ring in question and similar rings identified by Mogul is calculated over all ring torsion angles. If the average RMSD is greater than 60 degrees and the minimal RMSD between the ring in question and any Mogul-identified rings is also greater than 60 degrees, then that ring is considered an outlier. The outliers are highlighted in purple. The color gray indicates Mogul did not find sufficient equivalents in the CSD to analyse the geometry.



5.7 Other polymers [i](#)

There are no such residues in this entry.

5.8 Polymer linkage issues [i](#)

There are no chain breaks in this entry.

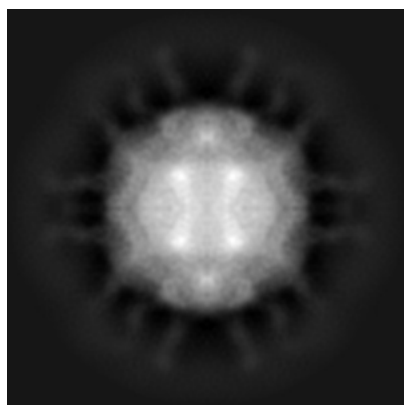
6 Map visualisation [i](#)

This section contains visualisations of the EMDB entry EMD-1562. These allow visual inspection of the internal detail of the map and identification of artifacts.

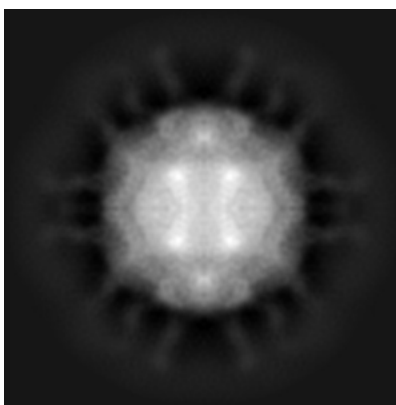
No raw map or half-maps were deposited for this entry and therefore no images, graphs, etc. pertaining to the raw map can be shown.

6.1 Orthogonal projections [i](#)

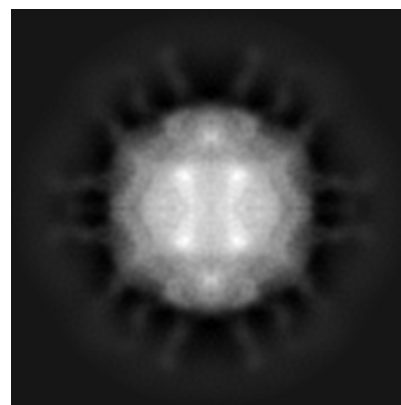
6.1.1 Primary map



X



Y

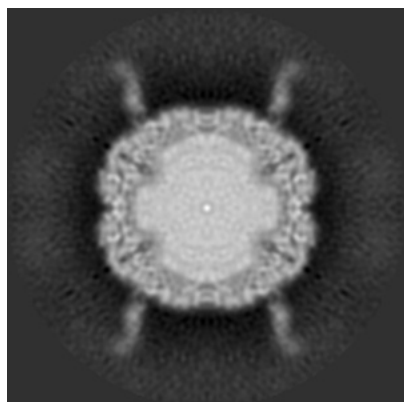


Z

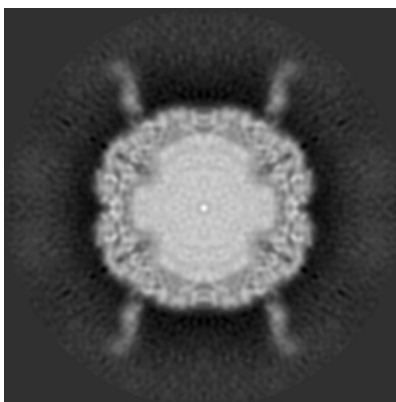
The images above show the map projected in three orthogonal directions.

6.2 Central slices [i](#)

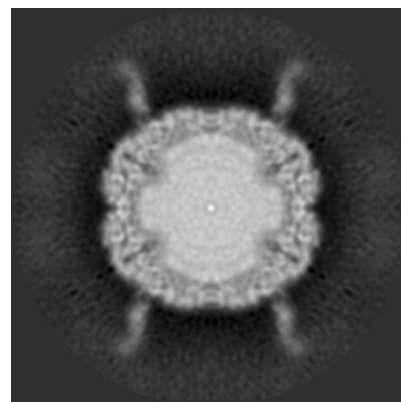
6.2.1 Primary map



X Index: 108



Y Index: 108

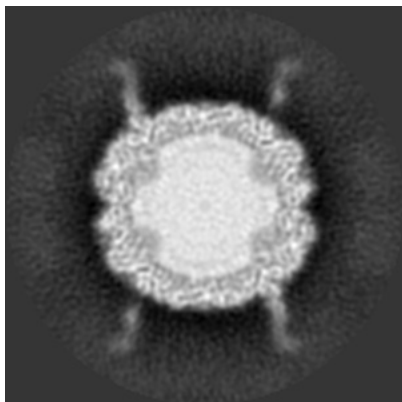


Z Index: 108

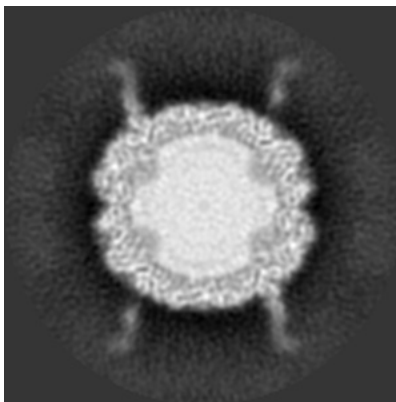
The images above show central slices of the map in three orthogonal directions.

6.3 Largest variance slices [i](#)

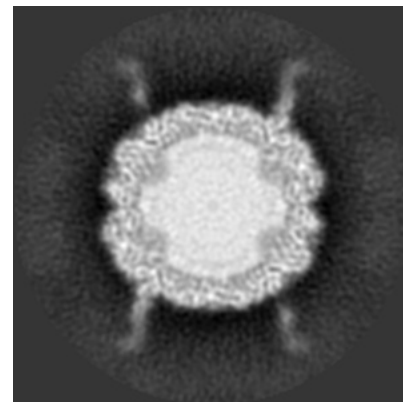
6.3.1 Primary map



X Index: 111



Y Index: 111

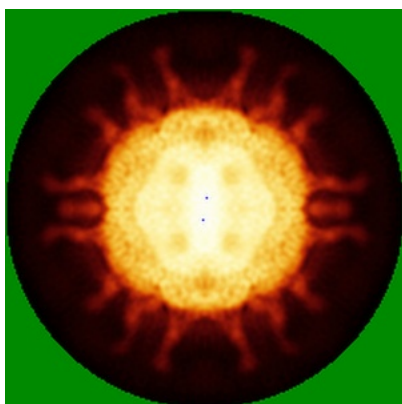


Z Index: 105

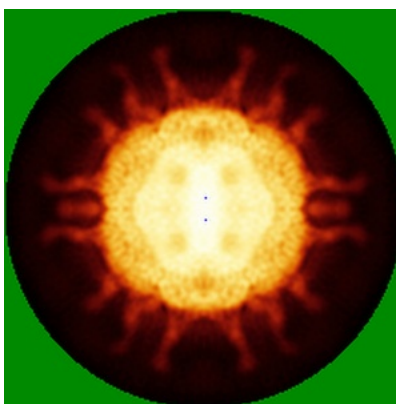
The images above show the largest variance slices of the map in three orthogonal directions.

6.4 Orthogonal standard-deviation projections (False-color) [i](#)

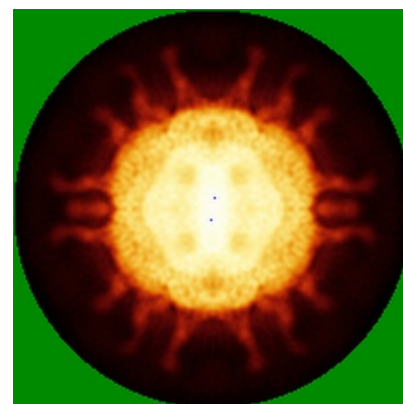
6.4.1 Primary map



X



Y

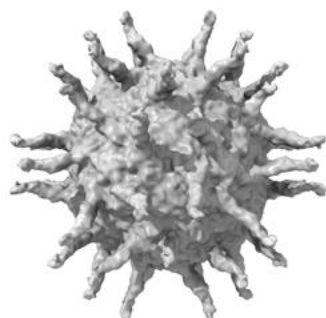


Z

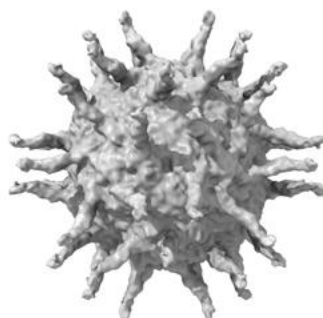
The images above show the map standard deviation projections with false color in three orthogonal directions. Minimum values are shown in green, max in blue, and dark to light orange shades represent small to large values respectively.

6.5 Orthogonal surface views [i](#)

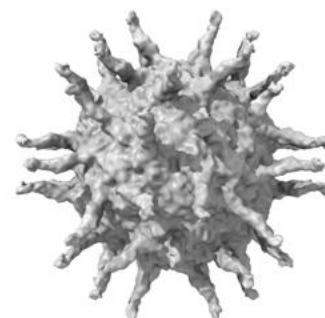
6.5.1 Primary map



X



Y



Z

The images above show the 3D surface view of the map at the recommended contour level 7.55. These images, in conjunction with the slice images, may facilitate assessment of whether an appropriate contour level has been provided.

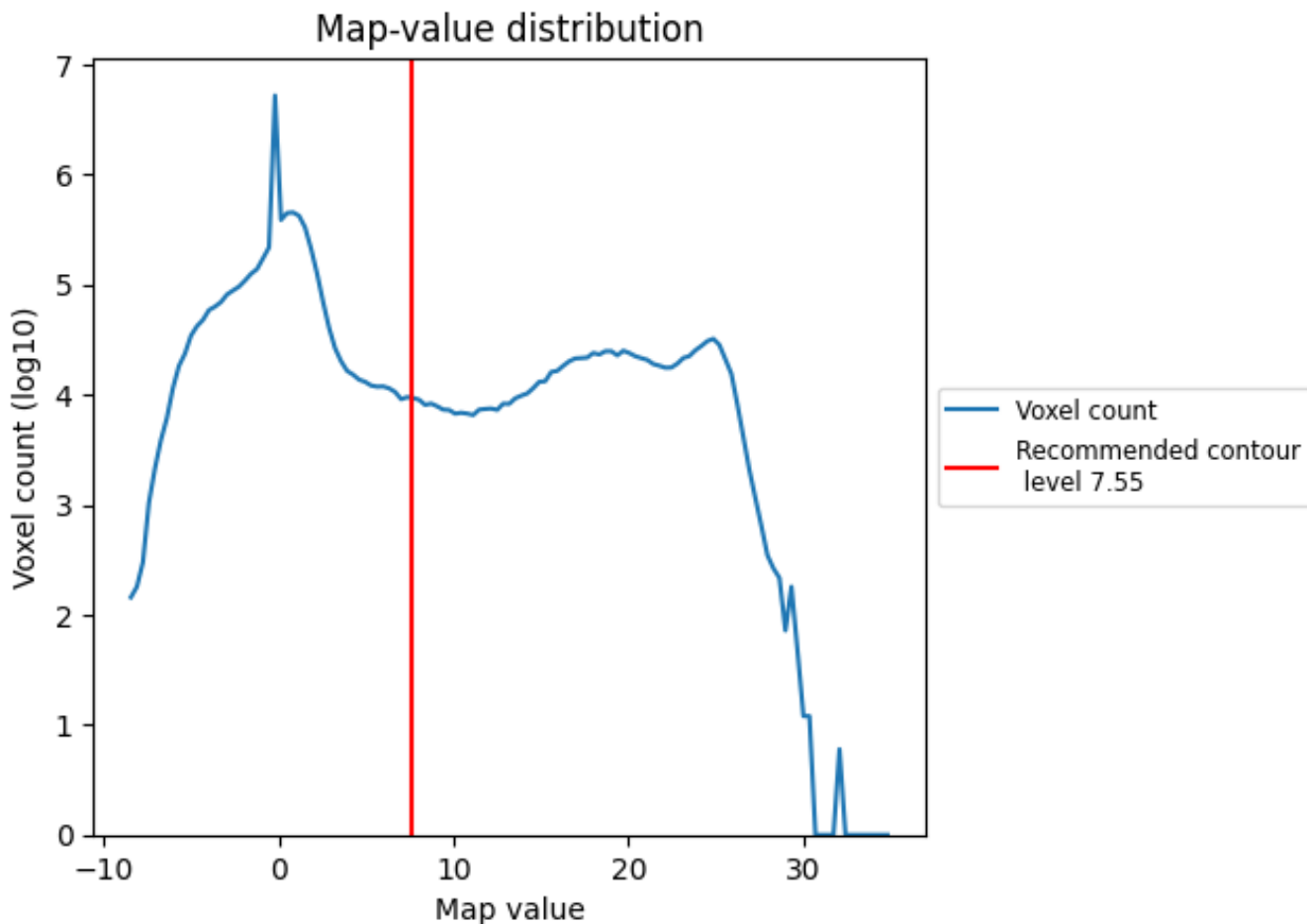
6.6 Mask visualisation [i](#)

This section was not generated. No masks/segmentation were deposited.

7 Map analysis [i](#)

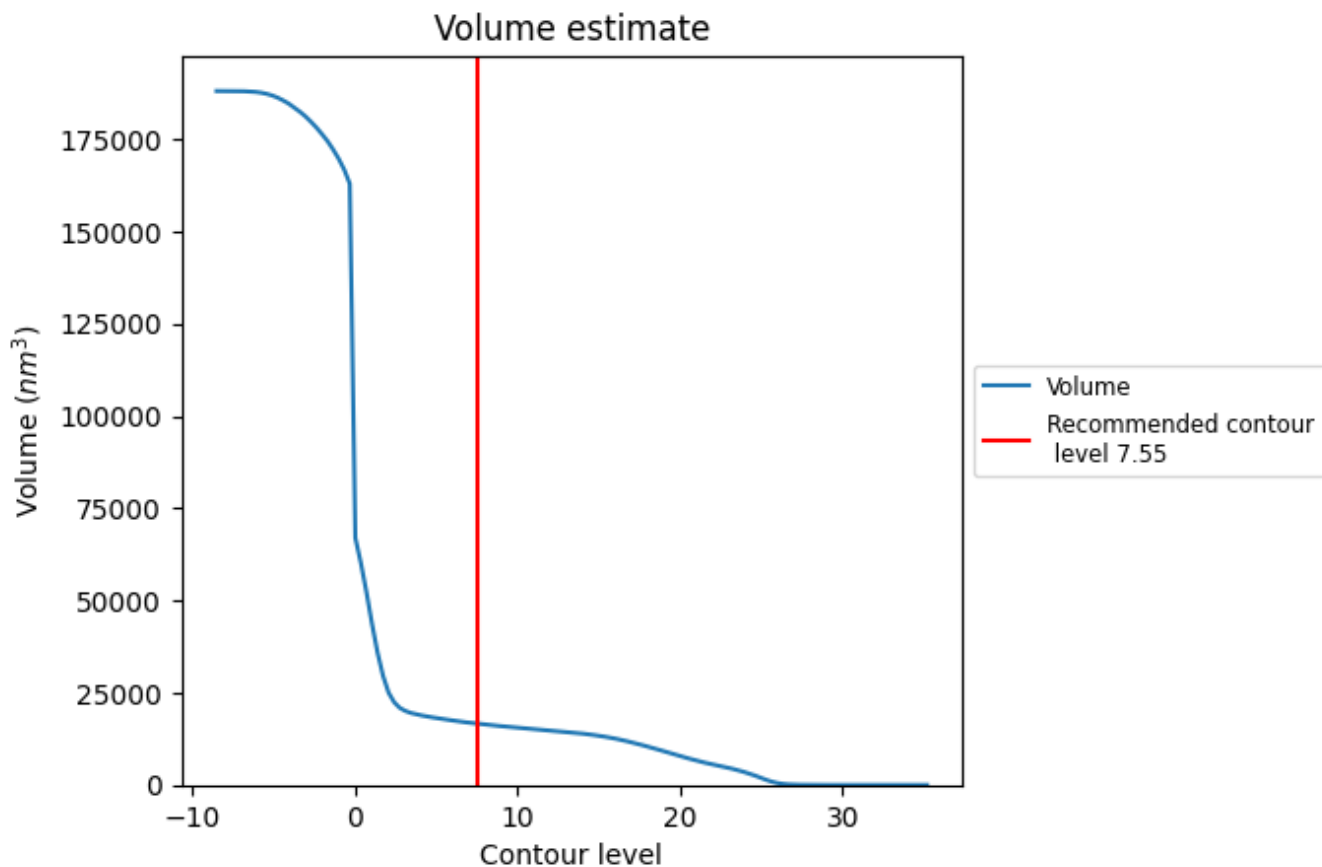
This section contains the results of statistical analysis of the map.

7.1 Map-value distribution [i](#)



The map-value distribution is plotted in 128 intervals along the x-axis. The y-axis is logarithmic. A spike in this graph at zero usually indicates that the volume has been masked.

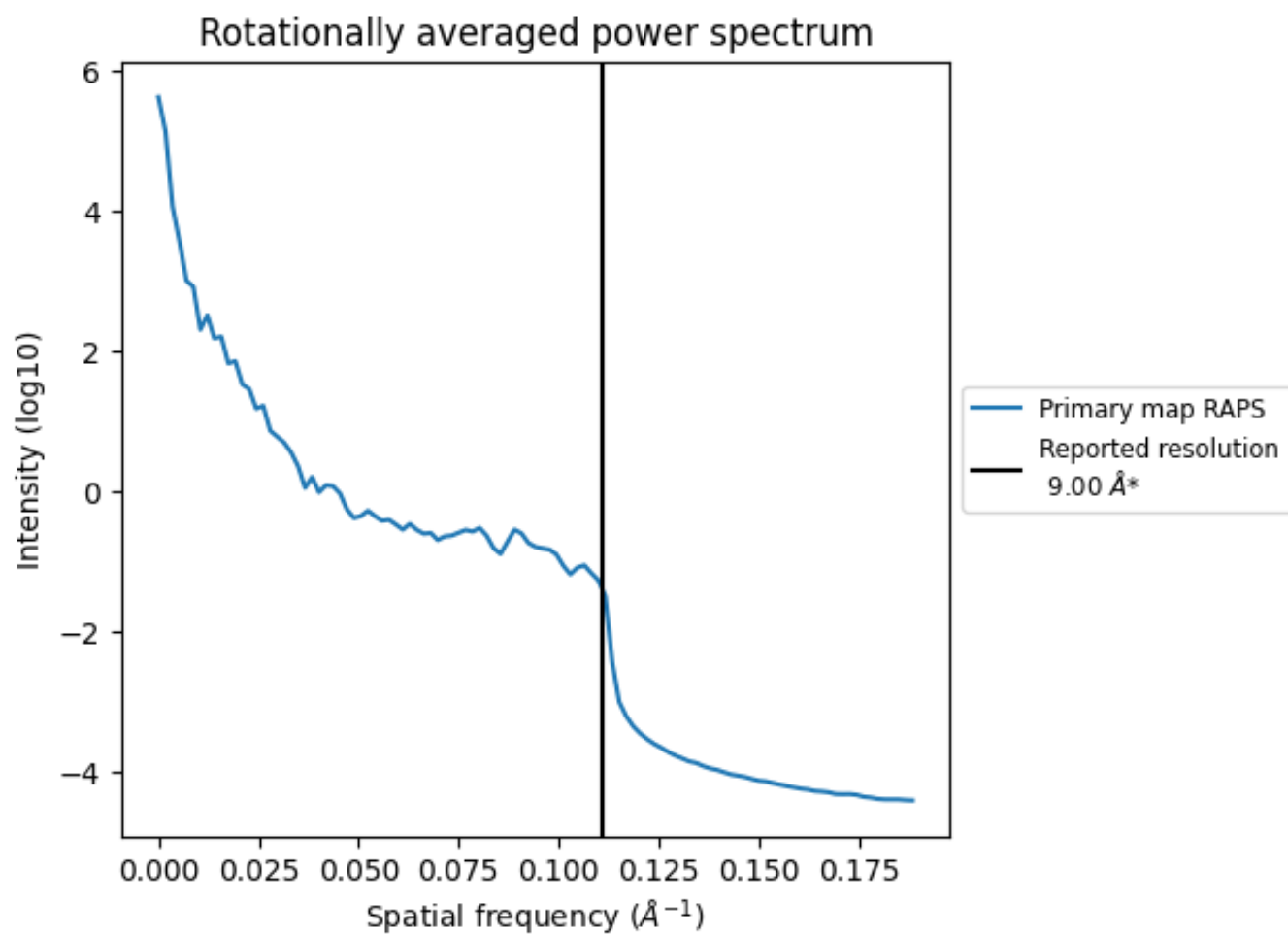
7.2 Volume estimate [\(i\)](#)



The volume at the recommended contour level is 16620 nm³; this corresponds to an approximate mass of 15013 kDa.

The volume estimate graph shows how the enclosed volume varies with the contour level. The recommended contour level is shown as a vertical line and the intersection between the line and the curve gives the volume of the enclosed surface at the given level.

7.3 Rotationally averaged power spectrum [i](#)



*Reported resolution corresponds to spatial frequency of 0.111\AA^{-1}

8 Fourier-Shell correlation

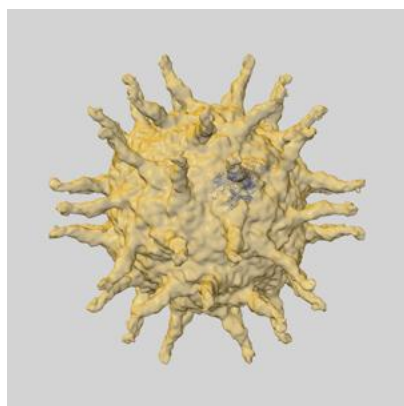
This section was not generated. No FSC curve or half-maps provided.

9 Map-model fit [i](#)

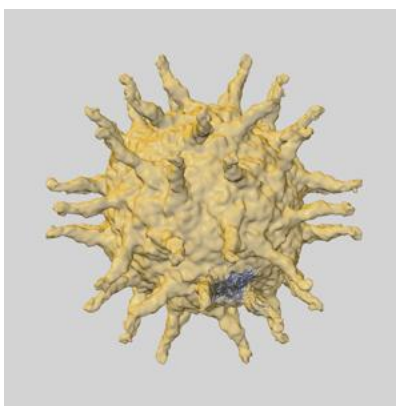
This section contains information regarding the fit between EMDB map EMD-1562 and PDB model 3EPD. Per-residue inclusion information can be found in section 3 on page 7.

9.1 Map-model overlays

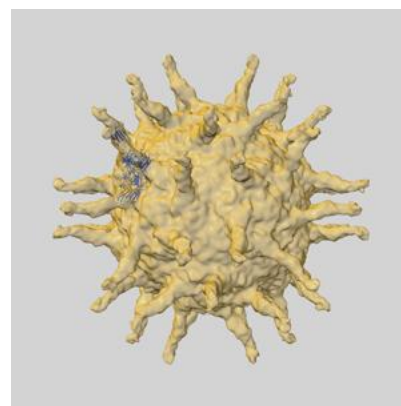
9.1.1 Map-model overlay [i](#)



X

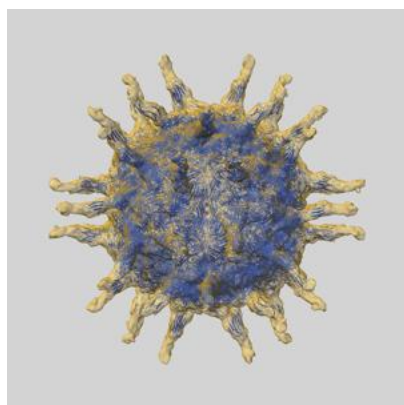


Y

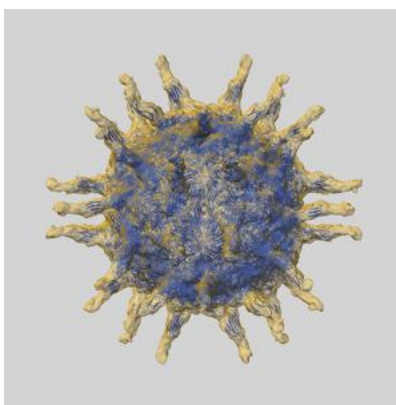


Z

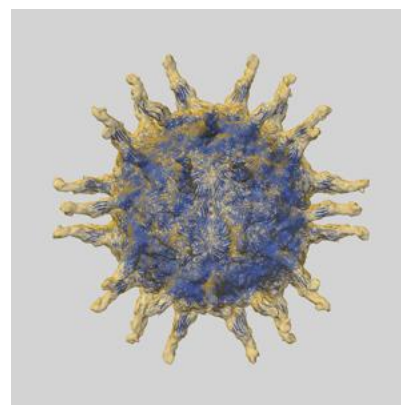
9.1.2 Map-model assembly overlay [i](#)



X



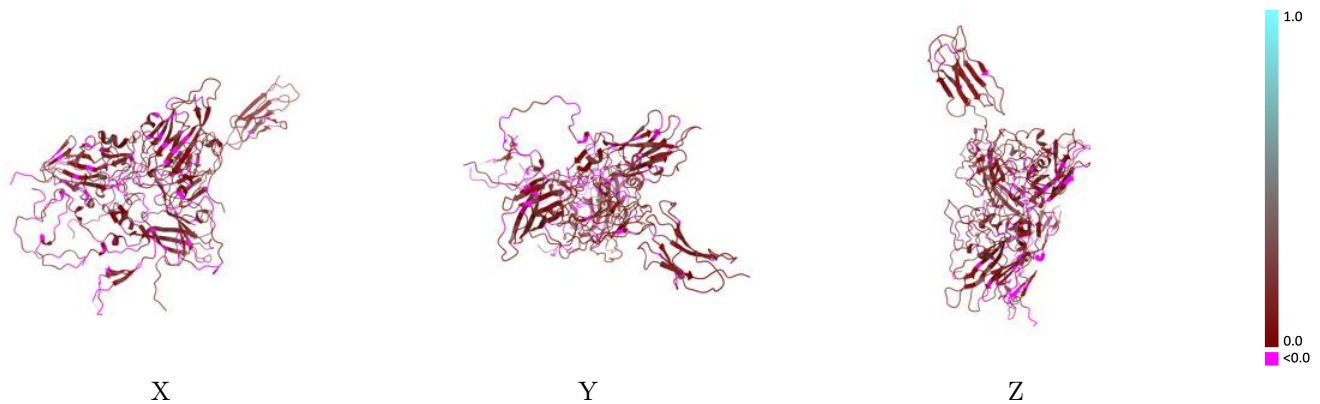
Y



Z

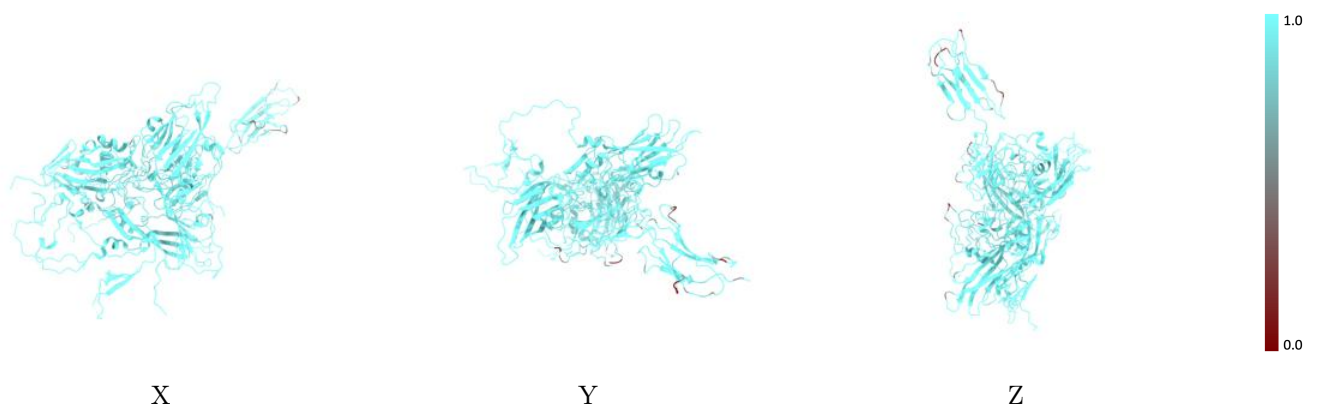
The images above show the 3D surface view of the map at the recommended contour level 7.55 at 50% transparency in yellow overlaid with a ribbon representation of the model coloured in blue. These images allow for the visual assessment of the quality of fit between the atomic model and the map.

9.2 Q-score mapped to coordinate model [\(i\)](#)



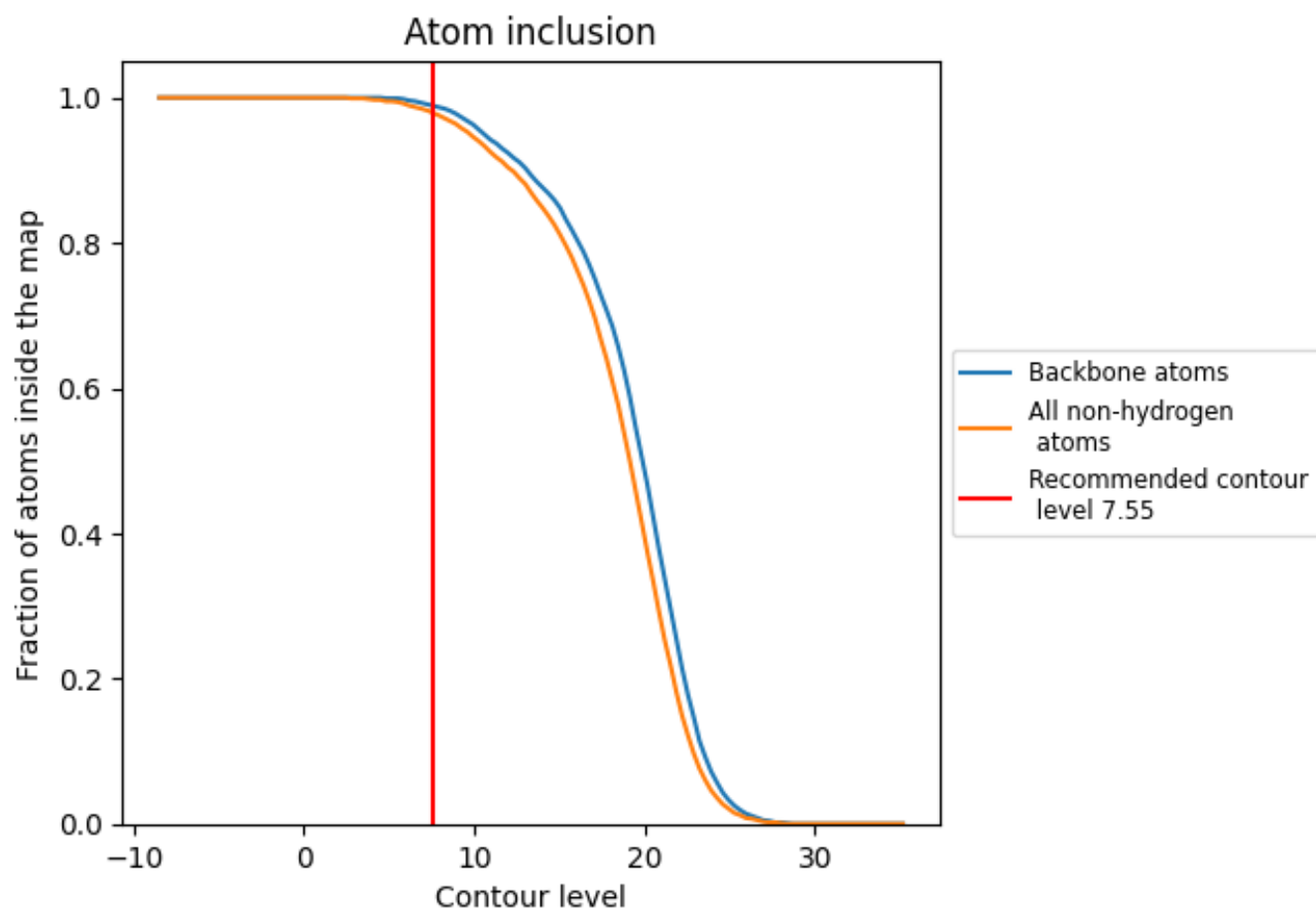
The images above show the model with each residue coloured according to its Q-score. This shows their resolvability in the map with higher Q-score values reflecting better resolvability. Please note: Q-score is calculating the resolvability of atoms, and thus high values are only expected at resolutions at which atoms can be resolved. Low Q-score values may therefore be expected for many entries.

9.3 Atom inclusion mapped to coordinate model [\(i\)](#)



The images above show the model with each residue coloured according to its atom inclusion. This shows to what extent they are inside the map at the recommended contour level (7.55).















9.4 Atom inclusion [i](#)



At the recommended contour level, 99% of all backbone atoms, 98% of all non-hydrogen atoms, are inside the map.

9.5 Map-model fit summary

The table lists the average atom inclusion at the recommended contour level (7.55) and Q-score for the entire model and for each chain.

Chain	Atom inclusion	Q-score
All	 0.9800	 0.0840
0	 1.0000	 0.0600
1	 0.9930	 0.0830
2	 0.9790	 0.0870
3	 0.9970	 0.0770
4	 1.0000	 0.0140
R	 0.9370	 0.1100

