



# Full wwPDB X-ray Structure Validation Report ⓘ

Feb 11, 2024 – 06:07 PM EST

PDB ID : 3E86  
Title : High resolution Crystal Structure of the open NaK channel pore  
Authors : Jiang, Y.; Alam, A.  
Deposited on : 2008-08-19  
Resolution : 1.60 Å(reported)

This is a Full wwPDB X-ray Structure Validation Report for a publicly released PDB entry.

We welcome your comments at [validation@mail.wwpdb.org](mailto:validation@mail.wwpdb.org)

A user guide is available at

<https://www.wwpdb.org/validation/2017/XrayValidationReportHelp>

with specific help available everywhere you see the ⓘ symbol.

The types of validation reports are described at

<http://www.wwpdb.org/validation/2017/FAQs#types>.

---

The following versions of software and data (see [references ⓘ](#)) were used in the production of this report:

MolProbity : 4.02b-467  
Mogul : 1.8.5 (274361), CSD as541be (2020)  
Xtriage (Phenix) : 1.13  
EDS : 2.36  
Percentile statistics : 20191225.v01 (using entries in the PDB archive December 25th 2019)  
Refmac : 5.8.0158  
CCP4 : 7.0.044 (Gargrove)  
Ideal geometry (proteins) : Engh & Huber (2001)  
Ideal geometry (DNA, RNA) : Parkinson et al. (1996)  
Validation Pipeline (wwPDB-VP) : 2.36

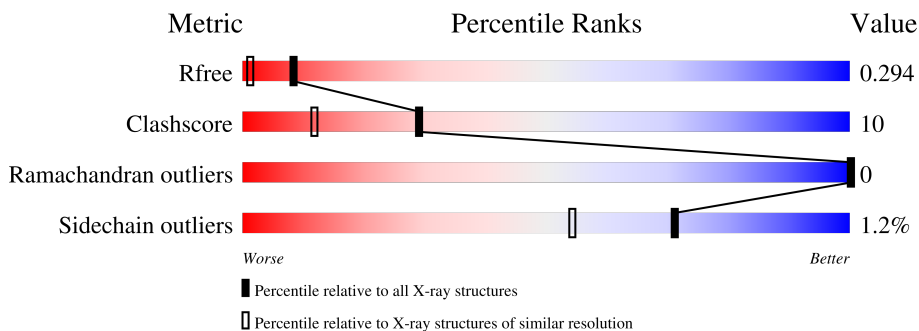
# 1 Overall quality at a glance

The following experimental techniques were used to determine the structure:

*X-RAY DIFFRACTION*

The reported resolution of this entry is 1.60 Å.

Percentile scores (ranging between 0-100) for global validation metrics of the entry are shown in the following graphic. The table shows the number of entries on which the scores are based.



Metric	Whole archive (#Entries)	Similar resolution (#Entries, resolution range(Å))
$R_{free}$	130704	3398 (1.60-1.60)
Clashscore	141614	3665 (1.60-1.60)
Ramachandran outliers	138981	3564 (1.60-1.60)
Sidechain outliers	138945	3563 (1.60-1.60)

The table below summarises the geometric issues observed across the polymeric chains and their fit to the electron density. The red, orange, yellow and green segments of the lower bar indicate the fraction of residues that contain outliers for  $\geq 3$ , 2, 1 and 0 types of geometric quality criteria respectively. A grey segment represents the fraction of residues that are not modelled. The numeric value for each fraction is indicated below the corresponding segment, with a dot representing fractions  $\leq 5\%$ .

Mol	Chain	Length	Quality of chain
1	A	96	 81% 12% 5%
1	B	96	 82% 17% 1%

## 2 Entry composition

There are 6 unique types of molecules in this entry. The entry contains 1636 atoms, of which 0 are hydrogens and 0 are deuteriums.

In the tables below, the ZeroOcc column contains the number of atoms modelled with zero occupancy, the AltConf column contains the number of residues with at least one atom in alternate conformation and the Trace column contains the number of residues modelled with at most 2 atoms.

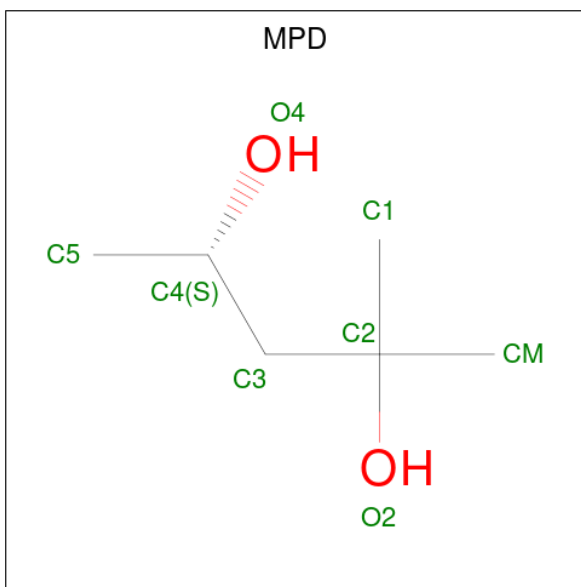
- Molecule 1 is a protein called Potassium channel protein.

Mol	Chain	Residues	Atoms			ZeroOcc	AltConf	Trace	
			Total	C	N				O
1	A	91	709	480	104	125	0	0	0
1	B	96	752	505	114	133	0	0	0

There are 8 discrepancies between the modelled and reference sequences:

Chain	Residue	Modelled	Actual	Comment	Reference
A	111	LEU	-	expression tag	UNP Q81HW2
A	112	VAL	-	expression tag	UNP Q81HW2
A	113	PRO	-	expression tag	UNP Q81HW2
A	114	ARG	-	expression tag	UNP Q81HW2
B	111	LEU	-	expression tag	UNP Q81HW2
B	112	VAL	-	expression tag	UNP Q81HW2
B	113	PRO	-	expression tag	UNP Q81HW2
B	114	ARG	-	expression tag	UNP Q81HW2

- Molecule 2 is (4S)-2-METHYL-2,4-PENTANEDIOL (three-letter code: MPD) (formula: C<sub>6</sub>H<sub>14</sub>O<sub>2</sub>).



Mol	Chain	Residues	Atoms	ZeroOcc	AltConf
2	A	1	Total C O 8 6 2	0	0
2	B	1	Total C O 8 6 2	0	0

- Molecule 3 is CESIUM ION (three-letter code: CS) (formula: Cs).

Mol	Chain	Residues	Atoms	ZeroOcc	AltConf
3	A	1	Total Cs 1 1	0	0
3	B	1	Total Cs 1 1	0	0

- Molecule 4 is CALCIUM ION (three-letter code: CA) (formula: Ca).

Mol	Chain	Residues	Atoms	ZeroOcc	AltConf
4	A	1	Total Ca 1 1	0	0

- Molecule 5 is SODIUM ION (three-letter code: NA) (formula: Na).

Mol	Chain	Residues	Atoms	ZeroOcc	AltConf
5	A	2	Total Na 2 2	0	0
5	B	2	Total Na 2 2	0	0


- Molecule 6 is water.

<b>Mol</b>	<b>Chain</b>	<b>Residues</b>	<b>Atoms</b>		<b>ZeroOcc</b>	<b>AltConf</b>
6	A	82	Total 82	O 82	0	0
6	B	70	Total 70	O 70	0	0

### 3 Residue-property plots [i](#)


These plots are drawn for all protein, RNA, DNA and oligosaccharide chains in the entry. The first graphic for a chain summarises the proportions of the various outlier classes displayed in the second graphic. The second graphic shows the sequence view annotated by issues in geometry. Residues are color-coded according to the number of geometric quality criteria for which they contain at least one outlier: green = 0, yellow = 1, orange = 2 and red = 3 or more. Stretches of 2 or more consecutive residues without any outlier are shown as a green connector. Residues present in the sample, but not in the model, are shown in grey.

- Molecule 1: Potassium channel protein

Chain A:  81% 12% 5%



- Molecule 1: Potassium channel protein

Chain B:  82% 17%



## 4 Data and refinement statistics i

Property	Value	Source
Space group	I 4	Depositor
Cell constants a, b, c, $\alpha$ , $\beta$ , $\gamma$	68.03Å 68.03Å 89.26Å 90.00° 90.00° 90.00°	Depositor
Resolution (Å)	34.01 – 1.60 34.02 – 1.60	Depositor EDS
% Data completeness (in resolution range)	95.0 (34.01-1.60) 95.0 (34.02-1.60)	Depositor EDS
$R_{merge}$	(Not available)	Depositor
$R_{sym}$	(Not available)	Depositor
$\langle I/\sigma(I) \rangle$ <sup>1</sup>	1.60 (at 1.60Å)	Xtrriage
Refinement program	CNS	Depositor
R, $R_{free}$	0.212 , 0.242 0.297 , 0.294	Depositor DCC
$R_{free}$ test set	1294 reflections (5.09%)	wwPDB-VP
Wilson B-factor (Å <sup>2</sup> )	25.7	Xtrriage
Anisotropy	0.194	Xtrriage
Bulk solvent $k_{sol}$ (e/Å <sup>3</sup> ), $B_{sol}$ (Å <sup>2</sup> )	0.30 , 90.8	EDS
L-test for twinning <sup>2</sup>	$\langle  L  \rangle = 0.48$ , $\langle L^2 \rangle = 0.31$	Xtrriage
Estimated twinning fraction	0.062 for -h,k,-l	Xtrriage
$F_o, F_c$ correlation	0.91	EDS
Total number of atoms	1636	wwPDB-VP
Average B, all atoms (Å <sup>2</sup> )	37.0	wwPDB-VP

Xtrriage's analysis on translational NCS is as follows: *The largest off-origin peak in the Patterson function is 6.52% of the height of the origin peak. No significant pseudotranslation is detected.*

<sup>1</sup>Intensities estimated from amplitudes.

<sup>2</sup>Theoretical values of  $\langle |L| \rangle$ ,  $\langle L^2 \rangle$  for acentric reflections are 0.5, 0.333 respectively for untwinned datasets, and 0.375, 0.2 for perfectly twinned datasets.

## 5 Model quality [i](#)

### 5.1 Standard geometry [i](#)

Bond lengths and bond angles in the following residue types are not validated in this section: MPD, NA, CS, CA

The Z score for a bond length (or angle) is the number of standard deviations the observed value is removed from the expected value. A bond length (or angle) with  $|Z| > 5$  is considered an outlier worth inspection. RMSZ is the root-mean-square of all Z scores of the bond lengths (or angles).

Mol	Chain	Bond lengths		Bond angles	
		RMSZ	# Z  >5	RMSZ	# Z  >5
1	A	0.51	0/726	0.65	0/992
1	B	0.44	0/769	0.60	0/1046
All	All	0.48	0/1495	0.62	0/2038

There are no bond length outliers.

There are no bond angle outliers.

There are no chirality outliers.

There are no planarity outliers.

### 5.2 Too-close contacts [i](#)

In the following table, the Non-H and H(model) columns list the number of non-hydrogen atoms and hydrogen atoms in the chain respectively. The H(added) column lists the number of hydrogen atoms added and optimized by MolProbity. The Clashes column lists the number of clashes within the asymmetric unit, whereas Symm-Clashes lists symmetry-related clashes.

Mol	Chain	Non-H	H(model)	H(added)	Clashes	Symm-Clashes
1	A	709	0	736	17	0
1	B	752	0	781	12	0
2	A	8	0	14	0	0
2	B	8	0	14	0	0
3	A	1	0	0	0	0
3	B	1	0	0	0	0
4	A	1	0	0	0	0
5	A	2	0	0	0	0
5	B	2	0	0	0	0
6	A	82	0	0	5	4
6	B	70	0	0	3	6
All	All	1636	0	1545	29	6



The all-atom clashscore is defined as the number of clashes found per 1000 atoms (including hydrogen atoms). The all-atom clashscore for this structure is 10.

All (29) close contacts within the same asymmetric unit are listed below, sorted by their clash magnitude.

Atom-1	Atom-2	Interatomic distance (Å)	Clash overlap (Å)
1:A:103:GLN:HE21	1:A:103:GLN:HA	1.32	0.95
1:A:104:LEU:HB3	1:A:105:PRO:HD3	1.51	0.90
1:A:29:VAL:HG23	6:A:554:HOH:O	1.71	0.89
1:B:95:ILE:CD1	6:B:613:HOH:O	2.21	0.88
1:A:29:VAL:CG2	6:A:554:HOH:O	2.23	0.86
1:A:103:GLN:HA	1:A:103:GLN:NE2	2.01	0.76
1:B:75:PHE:O	1:B:78:ILE:HD13	1.90	0.72
1:B:93:GLY:O	1:B:97:LYS:HD3	1.98	0.64
1:A:26:VAL:HG21	6:A:568:HOH:O	1.99	0.61
1:A:107:ILE:HG12	6:A:538:HOH:O	2.00	0.61
1:B:74:ASP:O	1:B:78:ILE:HG23	2.01	0.60
1:B:95:ILE:HD11	6:B:613:HOH:O	1.93	0.59
1:B:104:LEU:HB3	1:B:105:PRO:HD3	1.86	0.58
1:A:88:ILE:C	1:A:88:ILE:HD13	2.24	0.57
1:A:28:PHE:O	1:A:32:ILE:HG12	2.09	0.53
1:A:107:ILE:O	1:A:111:LEU:HD23	2.08	0.52
1:A:88:ILE:HG13	6:A:521:HOH:O	2.10	0.51
1:A:104:LEU:HB3	1:A:105:PRO:CD	2.32	0.50
1:A:32:ILE:O	1:A:36:ILE:HG13	2.13	0.48
1:A:104:LEU:O	1:A:108:LEU:N	2.37	0.48
1:A:88:ILE:HG23	1:A:89:GLY:N	2.31	0.45
1:B:42:TYR:HB2	1:B:53:ALA:HB1	1.98	0.45
1:B:62:THR:HG22	6:B:613:HOH:O	2.15	0.45
1:A:103:GLN:O	1:A:107:ILE:HG13	2.16	0.44
1:B:22:LYS:O	1:B:26:VAL:HG23	2.16	0.44
1:B:97:LYS:HD2	1:B:97:LYS:N	2.34	0.43
1:A:104:LEU:CB	1:A:105:PRO:HD3	2.36	0.43
1:B:48:LEU:HD21	1:B:69:PHE:CE1	2.56	0.41
1:B:43:SER:O	1:B:47:GLY:HA2	2.21	0.41

All (6) symmetry-related close contacts are listed below. The label for Atom-2 includes the symmetry operator and encoded unit-cell translations to be applied.

Atom-1	Atom-2	Interatomic distance (Å)	Clash overlap (Å)
6:A:582:HOH:O	6:B:558:HOH:O[6_444]	2.05	0.15
6:A:580:HOH:O	6:B:547:HOH:O[6_444]	2.11	0.09

*Continued on next page...*

Continued from previous page...

Atom-1	Atom-2	Interatomic distance (Å)	Clash overlap (Å)
6:A:531:HOH:O	6:B:548:HOH:O[6_444]	2.14	0.06
6:B:553:HOH:O	6:B:553:HOH:O[4_545]	2.14	0.06
6:A:582:HOH:O	6:B:594:HOH:O[6_444]	2.15	0.05
6:B:551:HOH:O	6:B:582:HOH:O[3_455]	2.17	0.03

## 5.3 Torsion angles [i](#)

### 5.3.1 Protein backbone [i](#)

In the following table, the Percentiles column shows the percent Ramachandran outliers of the chain as a percentile score with respect to all X-ray entries followed by that with respect to entries of similar resolution.

The Analysed column shows the number of residues for which the backbone conformation was analysed, and the total number of residues.

Mol	Chain	Analysed	Favoured	Allowed	Outliers	Percentiles	
1	A	89/96 (93%)	87 (98%)	2 (2%)	0	100	100
1	B	94/96 (98%)	92 (98%)	2 (2%)	0	100	100
All	All	183/192 (95%)	179 (98%)	4 (2%)	0	100	100

There are no Ramachandran outliers to report.

### 5.3.2 Protein sidechains [i](#)

In the following table, the Percentiles column shows the percent sidechain outliers of the chain as a percentile score with respect to all X-ray entries followed by that with respect to entries of similar resolution.

The Analysed column shows the number of residues for which the sidechain conformation was analysed, and the total number of residues.

Mol	Chain	Analysed	Rotameric	Outliers	Percentiles	
1	A	81/86 (94%)	80 (99%)	1 (1%)	71	54
1	B	85/86 (99%)	84 (99%)	1 (1%)	71	54
All	All	166/172 (96%)	164 (99%)	2 (1%)	71	54

All (2) residues with a non-rotameric sidechain are listed below:

Mol	Chain	Res	Type
1	A	88	ILE
1	B	78	ILE

Sometimes sidechains can be flipped to improve hydrogen bonding and reduce clashes. All (1) such sidechains are listed below:

Mol	Chain	Res	Type
1	A	103	GLN

### 5.3.3 RNA [i](#)

There are no RNA molecules in this entry.

## 5.4 Non-standard residues in protein, DNA, RNA chains [i](#)

There are no non-standard protein/DNA/RNA residues in this entry.

## 5.5 Carbohydrates [i](#)

There are no monosaccharides in this entry.

## 5.6 Ligand geometry [i](#)

Of 9 ligands modelled in this entry, 7 are monoatomic - leaving 2 for Mogul analysis.

In the following table, the Counts columns list the number of bonds (or angles) for which Mogul statistics could be retrieved, the number of bonds (or angles) that are observed in the model and the number of bonds (or angles) that are defined in the Chemical Component Dictionary. The Link column lists molecule types, if any, to which the group is linked. The Z score for a bond length (or angle) is the number of standard deviations the observed value is removed from the expected value. A bond length (or angle) with  $|Z| > 2$  is considered an outlier worth inspection. RMSZ is the root-mean-square of all Z scores of the bond lengths (or angles).

Mol	Type	Chain	Res	Link	Bond lengths			Bond angles		
					Counts	RMSZ	$\# Z  > 2$	Counts	RMSZ	$\# Z  > 2$
2	MPD	B	502	-	7,7,7	0.32	0	9,10,10	0.37	0
2	MPD	A	501	-	7,7,7	0.33	0	9,10,10	0.36	0

In the following table, the Chirals column lists the number of chiral outliers, the number of chiral centers analysed, the number of these observed in the model and the number defined in the Chemical Component Dictionary. Similar counts are reported in the Torsion and Rings columns. '-' means no outliers of that kind were identified.

Mol	Type	Chain	Res	Link	Chirals	Torsions	Rings
2	MPD	B	502	-	-	1/5/5/5	-
2	MPD	A	501	-	-	2/5/5/5	-

There are no bond length outliers.

There are no bond angle outliers.

There are no chirality outliers.

All (3) torsion outliers are listed below:

Mol	Chain	Res	Type	Atoms
2	A	501	MPD	CM-C2-C3-C4
2	A	501	MPD	O2-C2-C3-C4
2	B	502	MPD	C2-C3-C4-C5

There are no ring outliers.

No monomer is involved in short contacts.

## 5.7 Other polymers [i](#)

There are no such residues in this entry.

## 5.8 Polymer linkage issues [i](#)

There are no chain breaks in this entry.

## 6 Fit of model and data

### 6.1 Protein, DNA and RNA chains

Unable to reproduce the depositors R factor - this section is therefore empty.

### 6.2 Non-standard residues in protein, DNA, RNA chains

Unable to reproduce the depositors R factor - this section is therefore empty.

### 6.3 Carbohydrates

Unable to reproduce the depositors R factor - this section is therefore empty.

### 6.4 Ligands

Unable to reproduce the depositors R factor - this section is therefore empty.

### 6.5 Other polymers

Unable to reproduce the depositors R factor - this section is therefore empty.