



# wwPDB X-ray Structure Validation Summary Report ⓘ

Nov 21, 2023 – 12:15 AM JST

PDB ID : 7E1R  
Title : Crystal structure of Dehydrogenase/isomerase FabX from Helicobacter pylori  
in complex with holo-ACP  
Authors : Zhou, J.S.; Zhang, L.; Zhang, L.  
Deposited on : 2021-02-03  
Resolution : 2.79 Å(reported)

This is a wwPDB X-ray Structure Validation Summary Report for a publicly released PDB entry.

We welcome your comments at [validation@mail.wwpdb.org](mailto:validation@mail.wwpdb.org)

A user guide is available at

<https://www.wwpdb.org/validation/2017/XrayValidationReportHelp>

with specific help available everywhere you see the ⓘ symbol.

The types of validation reports are described at

<http://www.wwpdb.org/validation/2017/FAQs#types>.

---

The following versions of software and data (see [references ⓘ](#)) were used in the production of this report:

MolProbity : 4.02b-467  
Mogul : 1.8.5 (274361), CSD as541be (2020)  
Xtrriage (Phenix) : 1.13  
EDS : 2.36  
buster-report : 1.1.7 (2018)  
Percentile statistics : 20191225.v01 (using entries in the PDB archive December 25th 2019)  
Refmac : 5.8.0158  
CCP4 : 7.0.044 (Gargrove)  
Ideal geometry (proteins) : Engh & Huber (2001)  
Ideal geometry (DNA, RNA) : Parkinson et al. (1996)  
Validation Pipeline (wwPDB-VP) : 2.36

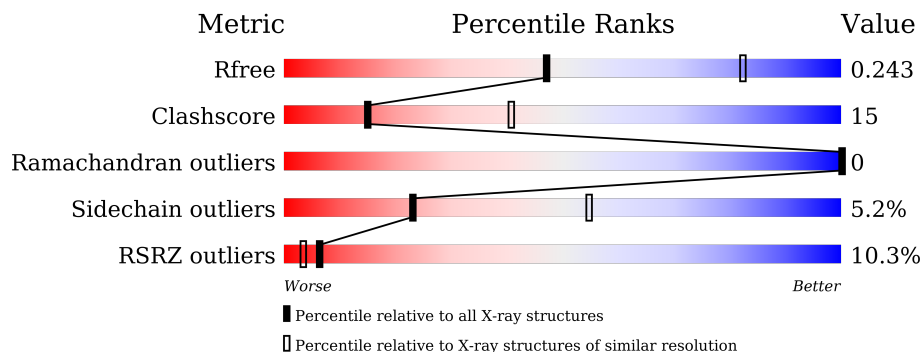
# 1 Overall quality at a glance

The following experimental techniques were used to determine the structure:

*X-RAY DIFFRACTION*

The reported resolution of this entry is 2.79 Å.

Percentile scores (ranging between 0-100) for global validation metrics of the entry are shown in the following graphic. The table shows the number of entries on which the scores are based.



Metric	Whole archive (#Entries)	Similar resolution (#Entries, resolution range(Å))
$R_{free}$	130704	3140 (2.80-2.80)
Clashscore	141614	3569 (2.80-2.80)
Ramachandran outliers	138981	3498 (2.80-2.80)
Sidechain outliers	138945	3500 (2.80-2.80)
RSRZ outliers	127900	3078 (2.80-2.80)

The table below summarises the geometric issues observed across the polymeric chains and their fit to the electron density. The red, orange, yellow and green segments of the lower bar indicate the fraction of residues that contain outliers for  $\geq 3$ , 2, 1 and 0 types of geometric quality criteria respectively. A grey segment represents the fraction of residues that are not modelled. The numeric value for each fraction is indicated below the corresponding segment, with a dot representing fractions  $\leq 5\%$ . The upper red bar (where present) indicates the fraction of residues that have poor fit to the electron density. The numeric value is given above the bar.

Mol	Chain	Length	Quality of chain
1	A	372	 71% 24% ...
1	C	372	 72% 22% ..
2	B	86	 52% 37% .. 17%
2	D	86	 49% 36% . 16%

## 2 Entry composition [i](#)

There are 6 unique types of molecules in this entry. The entry contains 6895 atoms, of which 0 are hydrogens and 0 are deuteriums.

In the tables below, the ZeroOcc column contains the number of atoms modelled with zero occupancy, the AltConf column contains the number of residues with at least one atom in alternate conformation and the Trace column contains the number of residues modelled with at most 2 atoms.

- Molecule 1 is a protein called 2-nitropropane dioxygenase.

Mol	Chain	Residues	Atoms					ZeroOcc	AltConf	Trace
			Total	C	N	O	S			
1	A	366	2813	1799	487	512	15	0	0	0
1	C	366	2812	1799	486	512	15	0	0	0

There are 18 discrepancies between the modelled and reference sequences:

Chain	Residue	Modelled	Actual	Comment	Reference
A	-8	MET	-	initiating methionine	UNP A0A0B2E3F3
A	-7	LYS	-	expression tag	UNP A0A0B2E3F3
A	-6	HIS	-	expression tag	UNP A0A0B2E3F3
A	-5	HIS	-	expression tag	UNP A0A0B2E3F3
A	-4	HIS	-	expression tag	UNP A0A0B2E3F3
A	-3	HIS	-	expression tag	UNP A0A0B2E3F3
A	-2	HIS	-	expression tag	UNP A0A0B2E3F3
A	-1	HIS	-	expression tag	UNP A0A0B2E3F3
A	0	HIS	-	expression tag	UNP A0A0B2E3F3
C	-8	MET	-	initiating methionine	UNP A0A0B2E3F3
C	-7	LYS	-	expression tag	UNP A0A0B2E3F3
C	-6	HIS	-	expression tag	UNP A0A0B2E3F3
C	-5	HIS	-	expression tag	UNP A0A0B2E3F3
C	-4	HIS	-	expression tag	UNP A0A0B2E3F3
C	-3	HIS	-	expression tag	UNP A0A0B2E3F3
C	-2	HIS	-	expression tag	UNP A0A0B2E3F3
C	-1	HIS	-	expression tag	UNP A0A0B2E3F3
C	0	HIS	-	expression tag	UNP A0A0B2E3F3

- Molecule 2 is a protein called Acyl carrier protein, Acyl carrier protein.

Mol	Chain	Residues	Atoms					ZeroOcc	AltConf	Trace
			Total	C	N	O	S			
2	B	71	549	349	81	118	1	0	0	0

*Continued on next page...*

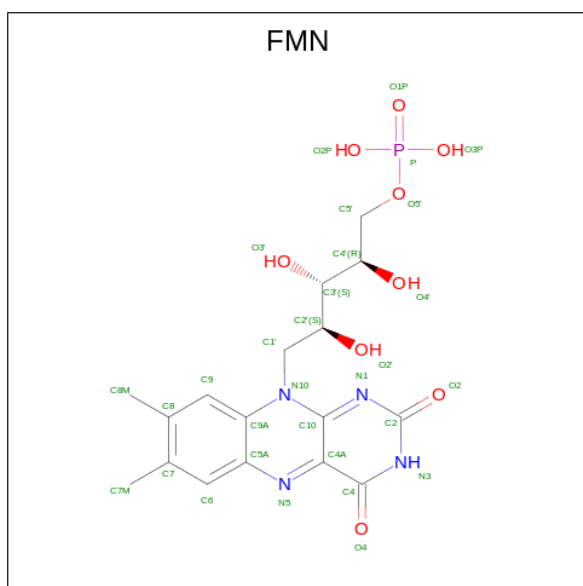
Continued from previous page...

Mol	Chain	Residues	Atoms					ZeroOcc	AltConf	Trace
			Total	C	N	O	S			
2	D	72	557	353	83	120	1	0	0	0

There are 16 discrepancies between the modelled and reference sequences:

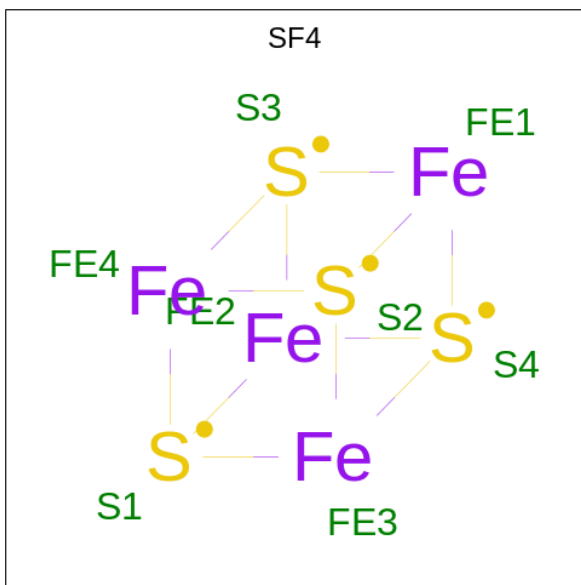
Chain	Residue	Modelled	Actual	Comment	Reference
B	-7	GLY	-	expression tag	UNP A0A0T6M3S8
B	-6	THR	-	expression tag	UNP A0A0T6M3S8
B	-5	SER	-	expression tag	UNP A0A0T6M3S8
B	-4	SER	-	expression tag	UNP A0A0T6M3S8
B	-3	MET	-	expression tag	UNP A0A0T6M3S8
B	-2	GLY	-	expression tag	UNP A0A0T6M3S8
B	-1	TYR	-	expression tag	UNP A0A0T6M3S8
B	0	LEU	-	expression tag	UNP A0A0T6M3S8
D	-7	GLY	-	expression tag	UNP A0A0T6M3S8
D	-6	THR	-	expression tag	UNP A0A0T6M3S8
D	-5	SER	-	expression tag	UNP A0A0T6M3S8
D	-4	SER	-	expression tag	UNP A0A0T6M3S8
D	-3	MET	-	expression tag	UNP A0A0T6M3S8
D	-2	GLY	-	expression tag	UNP A0A0T6M3S8
D	-1	TYR	-	expression tag	UNP A0A0T6M3S8
D	0	LEU	-	expression tag	UNP A0A0T6M3S8

- Molecule 3 is FLAVIN MONONUCLEOTIDE (three-letter code: FMN) (formula: C<sub>17</sub>H<sub>21</sub>N<sub>4</sub>O<sub>9</sub>P) (labeled as "Ligand of Interest" by depositor).



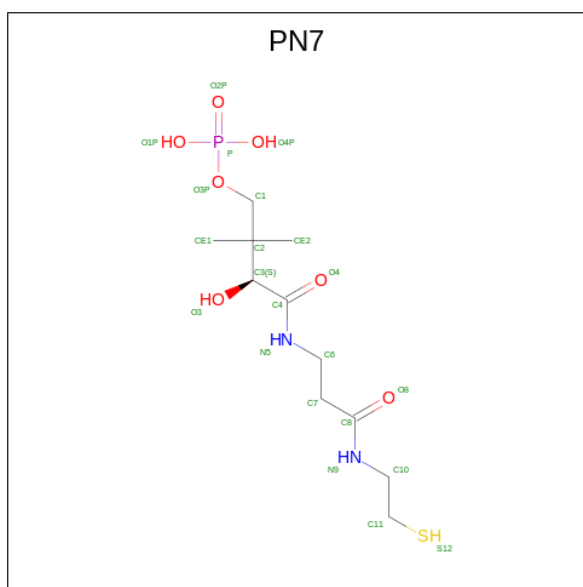
Mol	Chain	Residues	Atoms					ZeroOcc	AltConf
			Total	C	N	O	P		
3	A	1	31	17	4	9	1	0	0
3	C	1	31	17	4	9	1	0	0

- Molecule 4 is IRON/SULFUR CLUSTER (three-letter code: SF4) (formula: Fe<sub>4</sub>S<sub>4</sub>).



Mol	Chain	Residues	Atoms			ZeroOcc	AltConf
			Total	Fe	S		
4	A	1	8	4	4	0	0
4	C	1	8	4	4	0	0

- Molecule 5 is N 3 -[(2S)-2-hydroxy-3,3-dimethyl-4-(phosphonoxy)butanoyl]-N-(2-sulfanylethyl)-beta-alaninamide (three-letter code: PN7) (formula: C<sub>11</sub>H<sub>23</sub>N<sub>2</sub>O<sub>7</sub>PS) (labeled as "Ligand of Interest" by depositor).



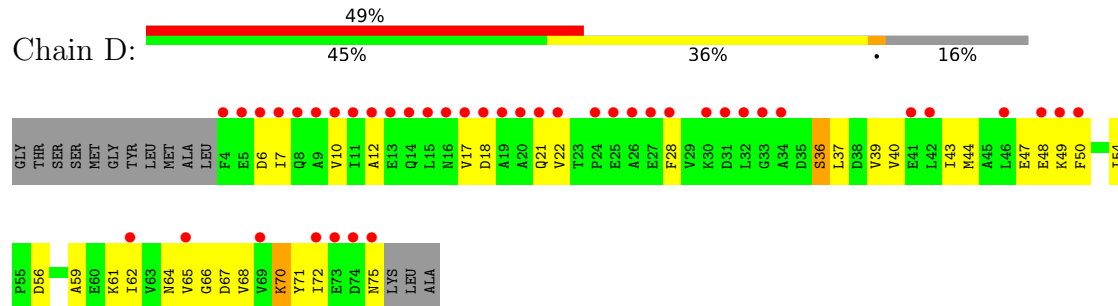
Mol	Chain	Residues	Atoms					ZeroOcc	AltConf	
			Total	C	N	O	P			S
5	B	1	21	11	2	6	1	1	0	0
5	D	1	21	11	2	6	1	1	0	0

- Molecule 6 is water.

Mol	Chain	Residues	Atoms		ZeroOcc	AltConf
6	A	23	Total	O	0	0
			23	23		
6	B	1	Total	O	0	0
			1	1		
6	C	20	Total	O	0	0
			20	20		



- Molecule 2: Acyl carrier protein, Acyl carrier protein





## 4 Data and refinement statistics

Property	Value	Source
Space group	P 1 21 1	Depositor
Cell constants a, b, c, $\alpha$ , $\beta$ , $\gamma$	51.79Å 104.44Å 99.58Å 90.00° 99.52° 90.00°	Depositor
Resolution (Å)	48.74 – 2.79 48.74 – 2.79	Depositor EDS
% Data completeness (in resolution range)	82.8 (48.74-2.79) 82.8 (48.74-2.79)	Depositor EDS
$R_{merge}$	(Not available)	Depositor
$R_{sym}$	(Not available)	Depositor
$\langle I/\sigma(I) \rangle$ <sup>1</sup>	3.22 (at 2.81Å)	Xtrriage
Refinement program	PHENIX 1.13_2998	Depositor
R, $R_{free}$	0.206 , 0.243 0.206 , 0.243	Depositor DCC
$R_{free}$ test set	1104 reflections (5.13%)	wwPDB-VP
Wilson B-factor (Å <sup>2</sup> )	46.5	Xtrriage
Anisotropy	0.210	Xtrriage
Bulk solvent $k_{sol}$ (e/Å <sup>3</sup> ), $B_{sol}$ (Å <sup>2</sup> )	0.31 , 46.5	EDS
L-test for twinning <sup>2</sup>	$\langle  L  \rangle = 0.49$ , $\langle L^2 \rangle = 0.33$	Xtrriage
Estimated twinning fraction	No twinning to report.	Xtrriage
$F_o, F_c$ correlation	0.91	EDS
Total number of atoms	6895	wwPDB-VP
Average B, all atoms (Å <sup>2</sup> )	49.0	wwPDB-VP

Xtrriage's analysis on translational NCS is as follows: *The largest off-origin peak in the Patterson function is 8.14% of the height of the origin peak. No significant pseudotranslation is detected.*

<sup>1</sup>Intensities estimated from amplitudes.

<sup>2</sup>Theoretical values of  $\langle |L| \rangle$ ,  $\langle L^2 \rangle$  for acentric reflections are 0.5, 0.333 respectively for untwinned datasets, and 0.375, 0.2 for perfectly twinned datasets.

## 5 Model quality [i](#)

### 5.1 Standard geometry [i](#)

Bond lengths and bond angles in the following residue types are not validated in this section: FMN, PN7, SF4

The Z score for a bond length (or angle) is the number of standard deviations the observed value is removed from the expected value. A bond length (or angle) with  $|Z| > 5$  is considered an outlier worth inspection. RMSZ is the root-mean-square of all Z scores of the bond lengths (or angles).

Mol	Chain	Bond lengths		Bond angles	
		RMSZ	# Z  >5	RMSZ	# Z  >5
1	A	1.06	15/2869 (0.5%)	0.90	17/3869 (0.4%)
1	C	1.08	18/2868 (0.6%)	0.89	7/3867 (0.2%)
2	B	0.85	0/554	0.81	2/752 (0.3%)
2	D	0.48	0/562	0.69	1/763 (0.1%)
All	All	1.01	33/6853 (0.5%)	0.87	27/9251 (0.3%)

The worst 5 of 33 bond length outliers are listed below:

Mol	Chain	Res	Type	Atoms	Z	Observed(Å)	Ideal(Å)
1	C	116	GLU	CD-OE1	-8.89	1.15	1.25
1	A	313	GLU	CD-OE1	-7.99	1.16	1.25
1	A	313	GLU	CD-OE2	-7.09	1.17	1.25
1	A	244	ARG	CZ-NH1	-6.79	1.24	1.33
1	A	2	VAL	C-O	-6.79	1.10	1.23

The worst 5 of 27 bond angle outliers are listed below:

Mol	Chain	Res	Type	Atoms	Z	Observed(°)	Ideal(°)
1	A	28	ILE	CG1-CB-CG2	-8.48	92.74	111.40
1	A	244	ARG	NE-CZ-NH2	8.47	124.54	120.30
2	D	22	VAL	C-N-CA	7.97	141.63	121.70
1	A	156	ILE	CG1-CB-CG2	-7.71	94.45	111.40
1	C	349	LYS	N-CA-CB	-7.27	97.52	110.60

There are no chirality outliers.

There are no planarity outliers.

## 5.2 Too-close contacts [i](#)

In the following table, the Non-H and H(model) columns list the number of non-hydrogen atoms and hydrogen atoms in the chain respectively. The H(added) column lists the number of hydrogen atoms added and optimized by MolProbity. The Clashes column lists the number of clashes within the asymmetric unit, whereas Symm-Clashes lists symmetry-related clashes.

Mol	Chain	Non-H	H(model)	H(added)	Clashes	Symm-Clashes
1	A	2813	0	2865	71	2
1	C	2812	0	2863	81	0
2	B	549	0	534	43	2
2	D	557	0	540	33	0
3	A	31	0	19	2	0
3	C	31	0	19	1	0
4	A	8	0	0	1	0
4	C	8	0	0	0	0
5	B	21	0	22	6	0
5	D	21	0	22	2	0
6	A	23	0	0	5	0
6	B	1	0	0	0	0
6	C	20	0	0	3	0
All	All	6895	0	6884	207	2

The all-atom clashscore is defined as the number of clashes found per 1000 atoms (including hydrogen atoms). The all-atom clashscore for this structure is 15.

The worst 5 of 207 close contacts within the same asymmetric unit are listed below, sorted by their clash magnitude.

Atom-1	Atom-2	Interatomic distance (Å)	Clash overlap (Å)
1:A:152:LYS:HE2	2:B:37:LEU:HB2	1.43	0.98
2:B:48:GLU:CD	1:C:213:ASN:ND2	2.19	0.96
1:C:55:LYS:HG3	1:C:58:ARG:HH11	1.33	0.90
1:A:152:LYS:HE2	2:B:37:LEU:CB	2.03	0.89
2:B:28:PHE:CE1	2:B:65:VAL:HG12	2.10	0.85

All (2) symmetry-related close contacts are listed below. The label for Atom-2 includes the symmetry operator and encoded unit-cell translations to be applied.

Atom-1	Atom-2	Interatomic distance (Å)	Clash overlap (Å)
1:A:226:LYS:NZ	2:B:25:GLU:OE2[2_555]	1.59	0.61
1:A:226:LYS:NZ	2:B:25:GLU:CD[2_555]	2.07	0.13

## 5.3 Torsion angles [i](#)

### 5.3.1 Protein backbone [i](#)

In the following table, the Percentiles column shows the percent Ramachandran outliers of the chain as a percentile score with respect to all X-ray entries followed by that with respect to entries of similar resolution.

The Analysed column shows the number of residues for which the backbone conformation was analysed, and the total number of residues.

Mol	Chain	Analysed	Favoured	Allowed	Outliers	Percentiles	
1	A	364/372 (98%)	352 (97%)	12 (3%)	0	100	100
1	C	364/372 (98%)	355 (98%)	9 (2%)	0	100	100
2	B	69/86 (80%)	66 (96%)	3 (4%)	0	100	100
2	D	70/86 (81%)	64 (91%)	6 (9%)	0	100	100
All	All	867/916 (95%)	837 (96%)	30 (4%)	0	100	100

There are no Ramachandran outliers to report.

### 5.3.2 Protein sidechains [i](#)

In the following table, the Percentiles column shows the percent sidechain outliers of the chain as a percentile score with respect to all X-ray entries followed by that with respect to entries of similar resolution.

The Analysed column shows the number of residues for which the sidechain conformation was analysed, and the total number of residues.

Mol	Chain	Analysed	Rotameric	Outliers	Percentiles	
1	A	294/300 (98%)	278 (95%)	16 (5%)	22	53
1	C	293/300 (98%)	279 (95%)	14 (5%)	25	58
2	B	60/71 (84%)	56 (93%)	4 (7%)	16	43
2	D	61/71 (86%)	58 (95%)	3 (5%)	25	57
All	All	708/742 (95%)	671 (95%)	37 (5%)	23	55

5 of 37 residues with a non-rotameric sidechain are listed below:

Mol	Chain	Res	Type
1	C	269	LEU
2	D	61	LYS
1	C	288	LYS

*Continued on next page...*

*Continued from previous page...*

Mol	Chain	Res	Type
1	C	346	ARG
1	A	349	LYS

Sometimes sidechains can be flipped to improve hydrogen bonding and reduce clashes. All (3) such sidechains are listed below:

Mol	Chain	Res	Type
1	A	213	ASN
1	C	199	ASN
1	C	213	ASN

### 5.3.3 RNA [i](#)

There are no RNA molecules in this entry.

### 5.4 Non-standard residues in protein, DNA, RNA chains [i](#)

There are no non-standard protein/DNA/RNA residues in this entry.

### 5.5 Carbohydrates [i](#)

There are no monosaccharides in this entry.

### 5.6 Ligand geometry [i](#)

6 ligands are modelled in this entry.

In the following table, the Counts columns list the number of bonds (or angles) for which Mogul statistics could be retrieved, the number of bonds (or angles) that are observed in the model and the number of bonds (or angles) that are defined in the Chemical Component Dictionary. The Link column lists molecule types, if any, to which the group is linked. The Z score for a bond length (or angle) is the number of standard deviations the observed value is removed from the expected value. A bond length (or angle) with  $|Z| > 2$  is considered an outlier worth inspection. RMSZ is the root-mean-square of all Z scores of the bond lengths (or angles).

Mol	Type	Chain	Res	Link	Bond lengths			Bond angles		
					Counts	RMSZ	# Z  > 2	Counts	RMSZ	# Z  > 2
4	SF4	A	1002	1	0,12,12	-	-	-		
4	SF4	C	1002	1	0,12,12	-	-	-		
3	FMN	A	1001	-	33,33,33	1.87	5 (15%)	48,50,50	1.34	7 (14%)

Mol	Type	Chain	Res	Link	Bond lengths			Bond angles		
					Counts	RMSZ	# Z  > 2	Counts	RMSZ	# Z  > 2
5	PN7	D	101	2	13,20,21	1.14	0	18,26,29	3.66	11 (61%)
5	PN7	B	101	2	13,20,21	1.09	0	18,26,29	3.69	10 (55%)
3	FMN	C	1001	-	33,33,33	1.92	9 (27%)	48,50,50	1.33	9 (18%)

In the following table, the Chirals column lists the number of chiral outliers, the number of chiral centers analysed, the number of these observed in the model and the number defined in the Chemical Component Dictionary. Similar counts are reported in the Torsion and Rings columns. '-' means no outliers of that kind were identified.

Mol	Type	Chain	Res	Link	Chirals	Torsions	Rings
4	SF4	A	1002	1	-	-	0/6/5/5
4	SF4	C	1002	1	-	-	0/6/5/5
3	FMN	A	1001	-	-	5/18/18/18	0/3/3/3
5	PN7	D	101	2	-	11/24/26/27	-
5	PN7	B	101	2	-	12/24/26/27	-
3	FMN	C	1001	-	-	5/18/18/18	0/3/3/3

The worst 5 of 14 bond length outliers are listed below:

Mol	Chain	Res	Type	Atoms	Z	Observed(Å)	Ideal(Å)
3	C	1001	FMN	C8M-C8	-5.68	1.39	1.51
3	A	1001	FMN	C8M-C8	-5.67	1.39	1.51
3	A	1001	FMN	C7M-C7	-5.42	1.40	1.51
3	C	1001	FMN	C7M-C7	-5.13	1.40	1.51
3	C	1001	FMN	C10-N1	3.58	1.40	1.33

The worst 5 of 37 bond angle outliers are listed below:

Mol	Chain	Res	Type	Atoms	Z	Observed(°)	Ideal(°)
5	B	101	PN7	C10-N9-C8	9.93	141.28	122.84
5	D	101	PN7	C10-N9-C8	9.59	140.64	122.84
5	B	101	PN7	C7-C8-N9	7.35	128.79	116.42
5	D	101	PN7	C7-C8-N9	6.99	128.18	116.42
5	B	101	PN7	O8-C8-C7	-4.62	113.56	122.02

There are no chirality outliers.

5 of 33 torsion outliers are listed below:

Mol	Chain	Res	Type	Atoms
5	B	101	PN7	C1-C2-C3-O3

*Continued on next page...*

*Continued from previous page...*

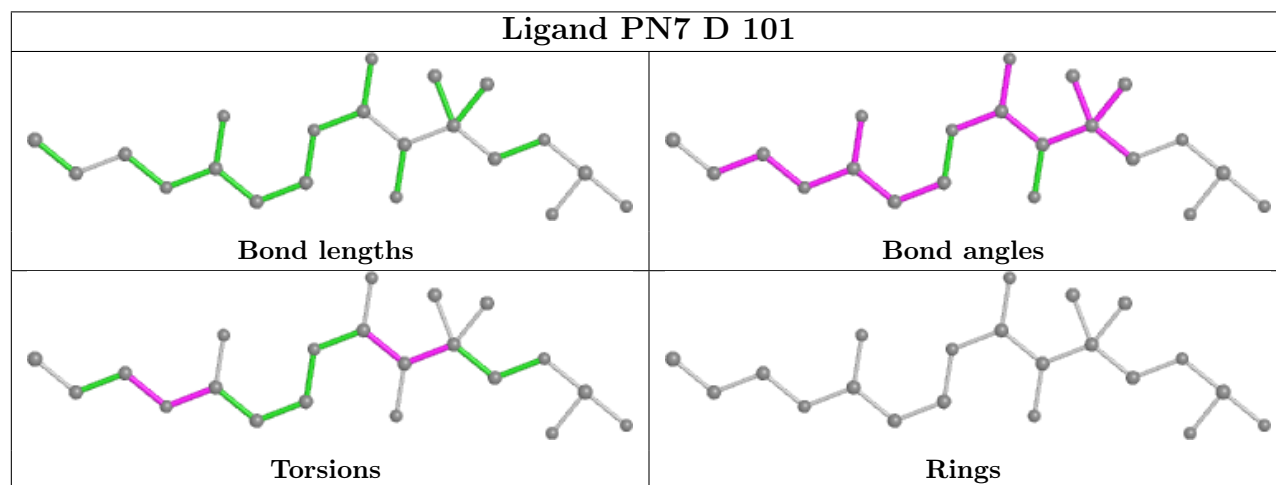
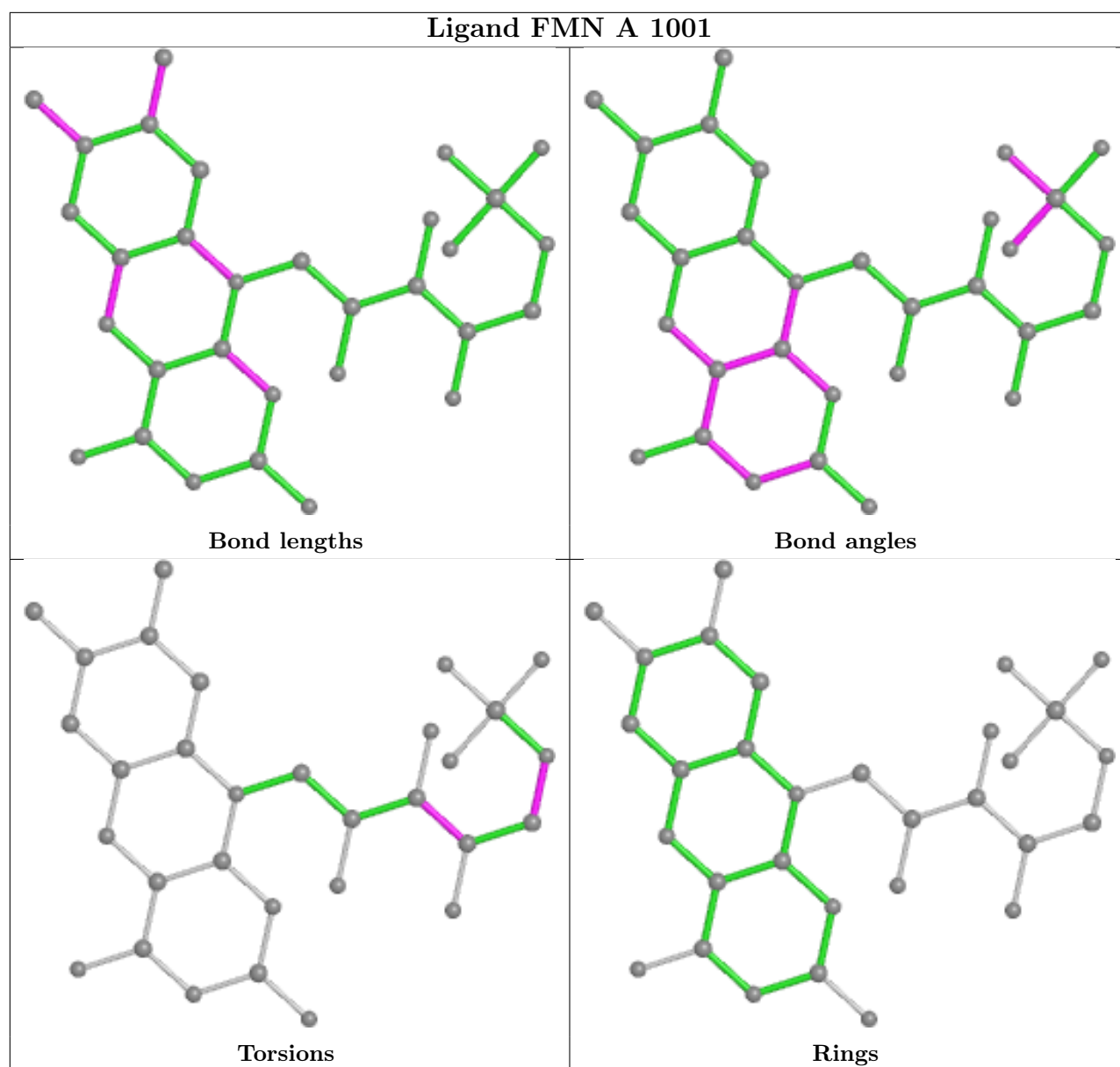
Mol	Chain	Res	Type	Atoms
5	B	101	PN7	C1-C2-C3-C4
5	B	101	PN7	CE2-C2-C3-C4
5	B	101	PN7	N9-C10-C11-S12
5	D	101	PN7	C1-C2-C3-O3

There are no ring outliers.

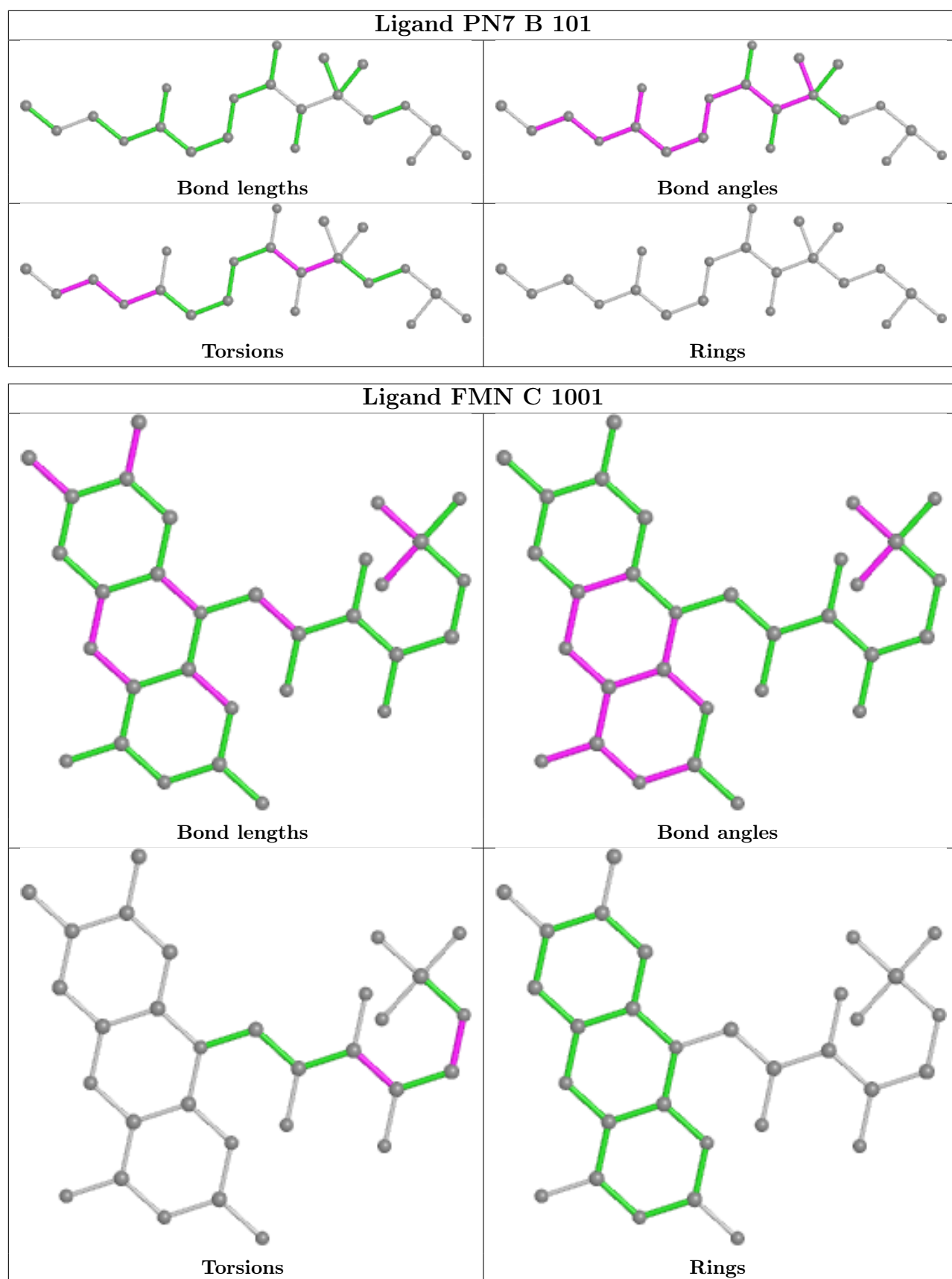
5 monomers are involved in 11 short contacts:

Mol	Chain	Res	Type	Clashes	Symm-Clashes
4	A	1002	SF4	1	0
3	A	1001	FMN	2	0
5	D	101	PN7	2	0
5	B	101	PN7	6	0
3	C	1001	FMN	1	0

The following is a two-dimensional graphical depiction of Mogul quality analysis of bond lengths, bond angles, torsion angles, and ring geometry for all instances of the Ligand of Interest. In addition, ligands with molecular weight > 250 and outliers as shown on the validation Tables will also be included. For torsion angles, if less than 5% of the Mogul distribution of torsion angles is within 10 degrees of the torsion angle in question, then that torsion angle is considered an outlier. Any bond that is central to one or more torsion angles identified as an outlier by Mogul will be highlighted in the graph. For rings, the root-mean-square deviation (RMSD) between the ring in question and similar rings identified by Mogul is calculated over all ring torsion angles. If the average RMSD is greater than 60 degrees and the minimal RMSD between the ring in question and any Mogul-identified rings is also greater than 60 degrees, then that ring is considered an outlier. The outliers are highlighted in purple. The color gray indicates Mogul did not find sufficient equivalents in the CSD to analyse the geometry.







## 5.7 Other polymers [i](#)

There are no such residues in this entry.

## 5.8 Polymer linkage issues [i](#)

There are no chain breaks in this entry.

## 6 Fit of model and data [i](#)

### 6.1 Protein, DNA and RNA chains [i](#)

In the following table, the column labelled ‘#RSRZ> 2’ contains the number (and percentage) of RSRZ outliers, followed by percent RSRZ outliers for the chain as percentile scores relative to all X-ray entries and entries of similar resolution. The OWAB column contains the minimum, median, 95<sup>th</sup> percentile and maximum values of the occupancy-weighted average B-factor per residue. The column labelled ‘Q< 0.9’ lists the number of (and percentage) of residues with an average occupancy less than 0.9.

Mol	Chain	Analysed	<RSRZ>	#RSRZ>2	OWAB(Å <sup>2</sup> )	Q<0.9
1	A	366/372 (98%)	-0.04	0 <b>100</b> <b>100</b>	20, 36, 61, 75	0
1	C	366/372 (98%)	-0.01	3 (0%) <b>86</b> <b>81</b>	23, 39, 66, 95	0
2	B	71/86 (82%)	2.76	45 (63%) <b>0</b> <b>0</b>	74, 100, 120, 131	0
2	D	72/86 (83%)	2.77	42 (58%) <b>0</b> <b>0</b>	63, 91, 115, 120	0
All	All	875/916 (95%)	0.43	90 (10%) <b>6</b> <b>3</b>	20, 41, 106, 131	0

The worst 5 of 90 RSRZ outliers are listed below:

Mol	Chain	Res	Type	RSRZ
2	D	20	ALA	10.4
2	D	19	ALA	8.7
2	D	32	LEU	7.7
2	B	18	ASP	7.5
2	B	19	ALA	7.4

### 6.2 Non-standard residues in protein, DNA, RNA chains [i](#)

There are no non-standard protein/DNA/RNA residues in this entry.

### 6.3 Carbohydrates [i](#)

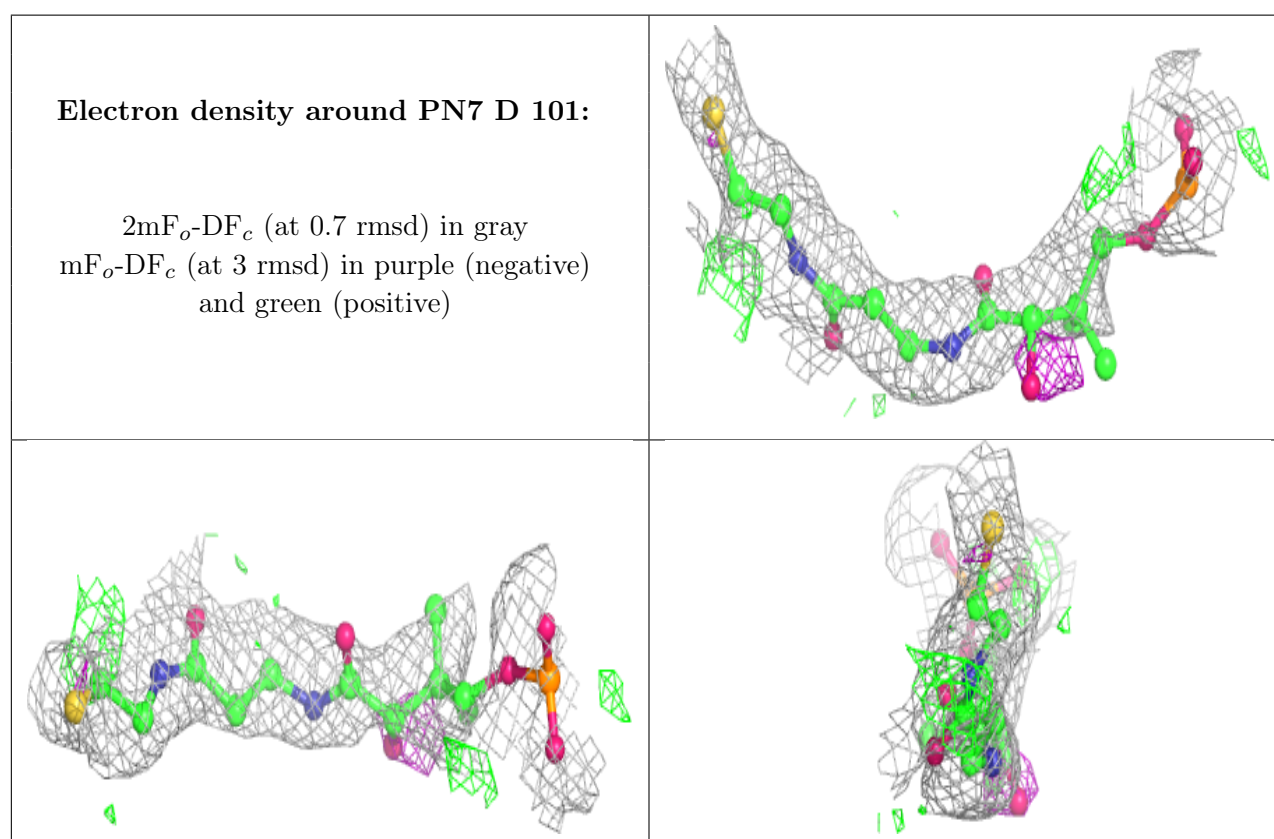
There are no monosaccharides in this entry.

### 6.4 Ligands [i](#)

In the following table, the Atoms column lists the number of modelled atoms in the group and the number defined in the chemical component dictionary. The B-factors column lists the minimum, median, 95<sup>th</sup> percentile and maximum values of B factors of atoms in the group. The column labelled ‘Q< 0.9’ lists the number of atoms with occupancy less than 0.9.

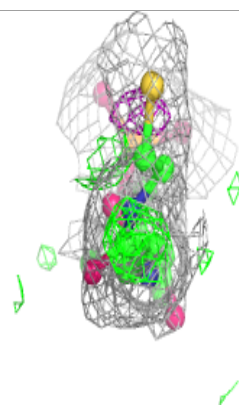
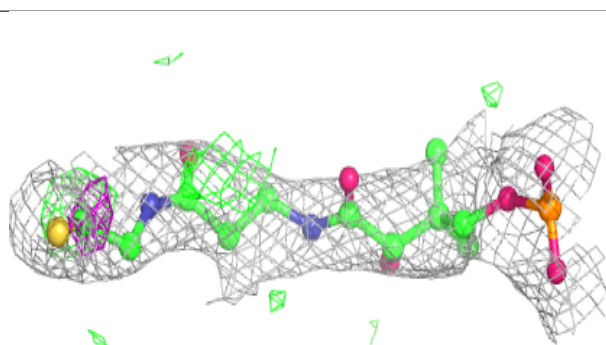
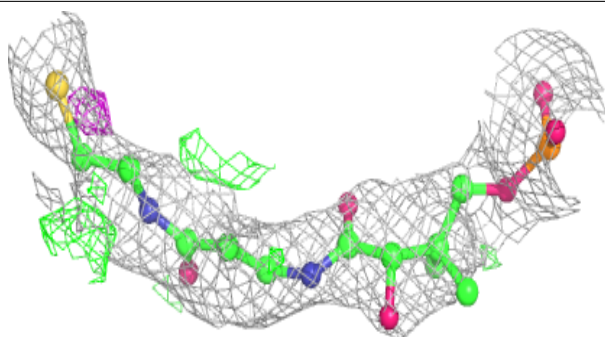
Mol	Type	Chain	Res	Atoms	RSCC	RSR	B-factors( $\text{\AA}^2$ )	Q<0.9
5	PN7	D	101	21/22	0.72	0.33	52,69,84,99	0
5	PN7	B	101	21/22	0.81	0.26	49,59,89,105	0
3	FMN	A	1001	31/31	0.97	0.18	20,25,30,41	0
3	FMN	C	1001	31/31	0.97	0.17	25,31,36,42	0
4	SF4	A	1002	8/8	0.99	0.14	20,24,27,31	0
4	SF4	C	1002	8/8	0.99	0.12	21,27,32,39	0

The following is a graphical depiction of the model fit to experimental electron density of all instances of the Ligand of Interest. In addition, ligands with molecular weight > 250 and outliers as shown on the geometry validation Tables will also be included. Each fit is shown from different orientation to approximate a three-dimensional view.

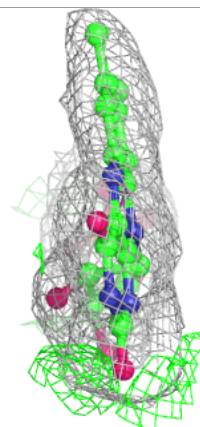
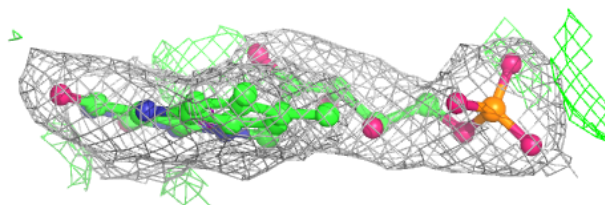
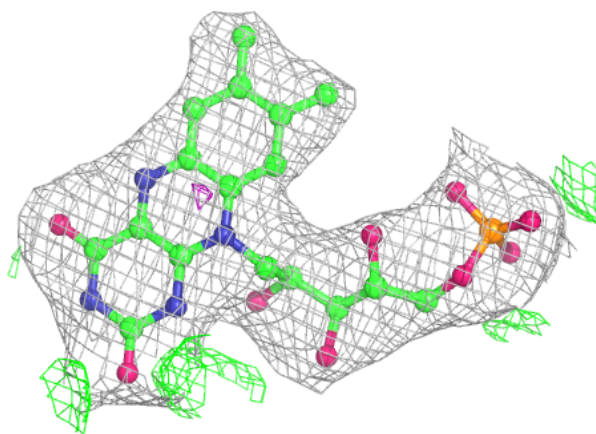


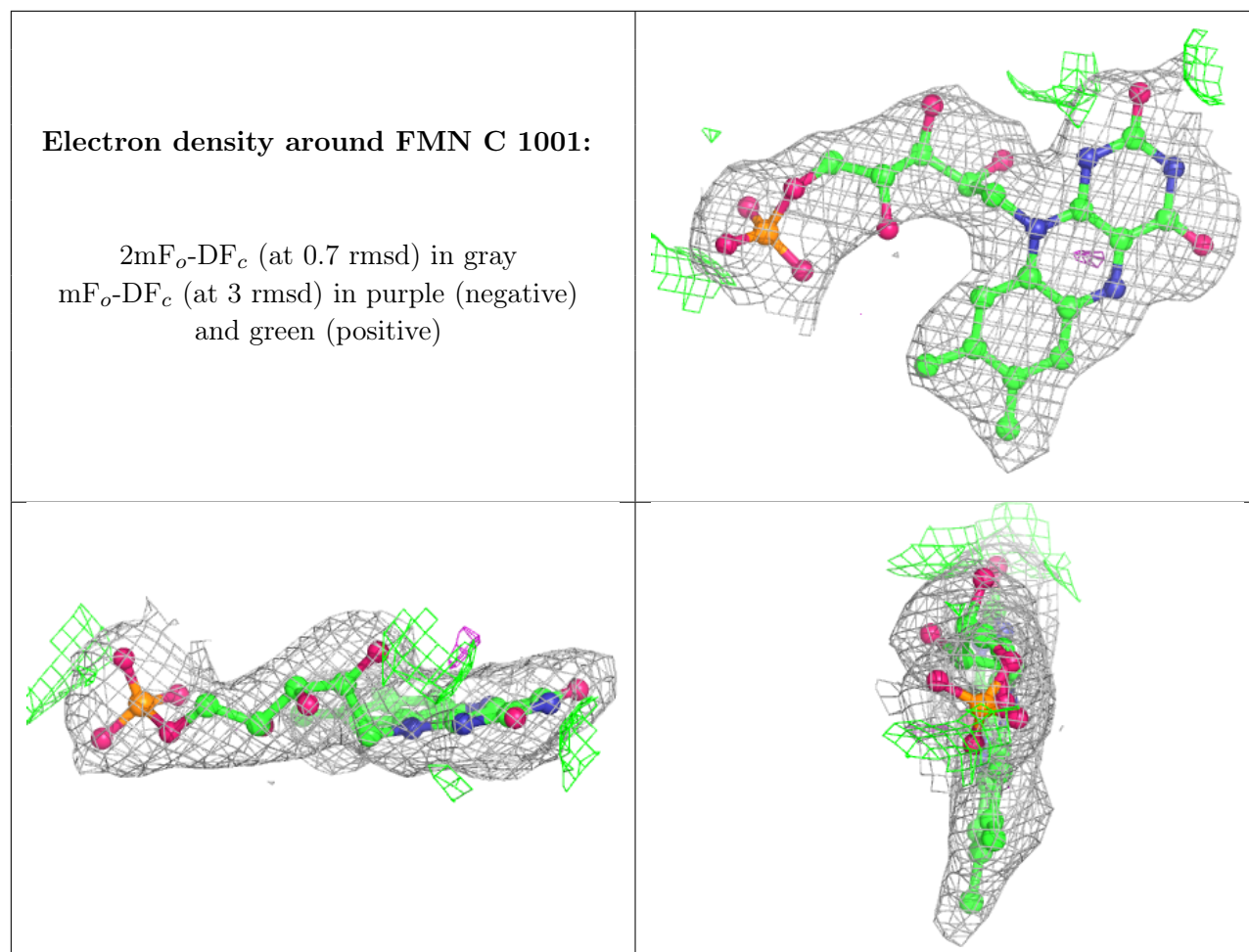
**Electron density around PN7 B 101:**

$2mF_o-DF_c$  (at 0.7 rmsd) in gray  
 $mF_o-DF_c$  (at 3 rmsd) in purple (negative)  
and green (positive)

**Electron density around FMN A 1001:**

$2mF_o-DF_c$  (at 0.7 rmsd) in gray  
 $mF_o-DF_c$  (at 3 rmsd) in purple (negative)  
and green (positive)





## 6.5 Other polymers [i](#)

There are no such residues in this entry.