



Full wwPDB X-ray Structure Validation Report ⓘ

Oct 8, 2023 – 12:00 AM EDT

PDB ID : 6DZF
Title : Orthorhombic trypsin cryocooled to 100 K with 20% xylose as cryoprotectant
Authors : Juers, D.H.
Deposited on : 2018-07-03
Resolution : 2.20 Å(reported)

This is a Full wwPDB X-ray Structure Validation Report for a publicly released PDB entry.

We welcome your comments at validation@mail.wwpdb.org

A user guide is available at

<https://www.wwpdb.org/validation/2017/XrayValidationReportHelp>

with specific help available everywhere you see the ⓘ symbol.

The types of validation reports are described at

<http://www.wwpdb.org/validation/2017/FAQs#types>.

The following versions of software and data (see [references ⓘ](#)) were used in the production of this report:

MolProbity : 4.02b-467
Mogul : 1.8.5 (274361), CSD as541be (2020)
Xtrriage (Phenix) : 1.13
EDS : 2.35.1
Percentile statistics : 20191225.v01 (using entries in the PDB archive December 25th 2019)
Refmac : 5.8.0158
CCP4 : 7.0.044 (Gargrove)
Ideal geometry (proteins) : Engh & Huber (2001)
Ideal geometry (DNA, RNA) : Parkinson et al. (1996)
Validation Pipeline (wwPDB-VP) : 2.35.1

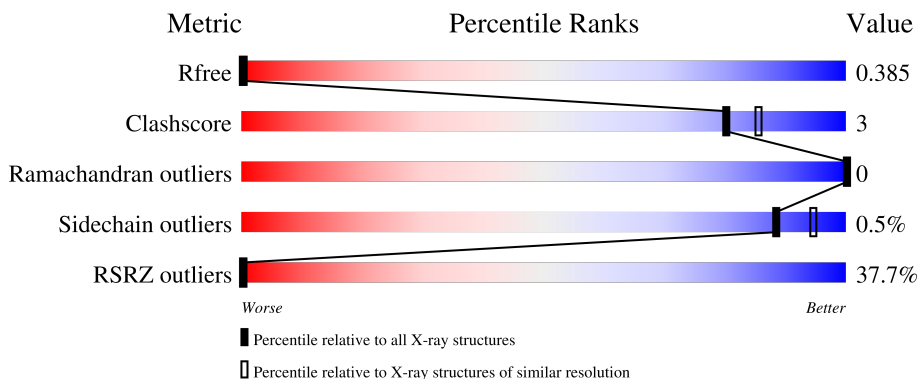
1 Overall quality at a glance

The following experimental techniques were used to determine the structure:

X-RAY DIFFRACTION

The reported resolution of this entry is 2.20 Å.

Percentile scores (ranging between 0-100) for global validation metrics of the entry are shown in the following graphic. The table shows the number of entries on which the scores are based.



Metric	Whole archive (#Entries)	Similar resolution (#Entries, resolution range(Å))
R_{free}	130704	4898 (2.20-2.20)
Clashscore	141614	5594 (2.20-2.20)
Ramachandran outliers	138981	5503 (2.20-2.20)
Sidechain outliers	138945	5504 (2.20-2.20)
RSRZ outliers	127900	4800 (2.20-2.20)

The table below summarises the geometric issues observed across the polymeric chains and their fit to the electron density. The red, orange, yellow and green segments of the lower bar indicate the fraction of residues that contain outliers for ≥ 3 , 2, 1 and 0 types of geometric quality criteria respectively. A grey segment represents the fraction of residues that are not modelled. The numeric value for each fraction is indicated below the corresponding segment, with a dot representing fractions $\leq 5\%$. The upper red bar (where present) indicates the fraction of residues that have poor fit to the electron density. The numeric value is given above the bar.

Mol	Chain	Length	Quality of chain
1	A	223	

The following table lists non-polymeric compounds, carbohydrate monomers and non-standard residues in protein, DNA, RNA chains that are outliers for geometric or electron-density-fit criteria:

Mol	Type	Chain	Res	Chirality	Geometry	Clashes	Electron density
4	SO4	A	303	-	-	-	X

2 Entry composition [i](#)

There are 6 unique types of molecules in this entry. The entry contains 3375 atoms, of which 1621 are hydrogens and 0 are deuteriums.

In the tables below, the ZeroOcc column contains the number of atoms modelled with zero occupancy, the AltConf column contains the number of residues with at least one atom in alternate conformation and the Trace column contains the number of residues modelled with at most 2 atoms.

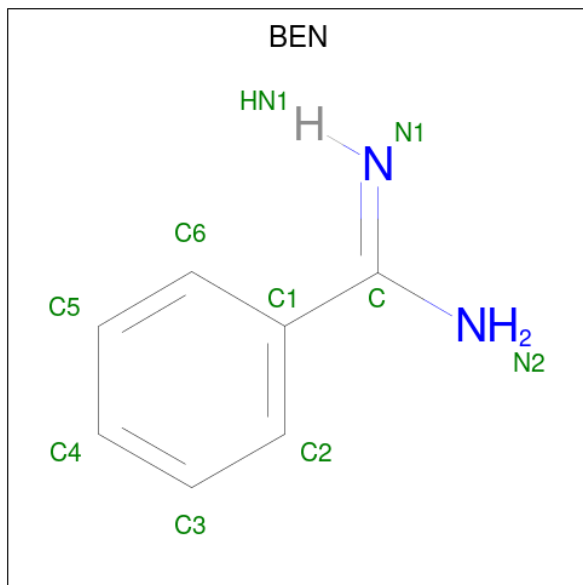
- Molecule 1 is a protein called Cationic trypsin.

Mol	Chain	Residues	Atoms						ZeroOcc	AltConf	Trace
			Total	C	H	N	O	S			
1	A	223	3253	1021	1606	282	330	14	0	6	0

- Molecule 2 is CALCIUM ION (three-letter code: CA) (formula: Ca).

Mol	Chain	Residues	Atoms		ZeroOcc	AltConf
2	A	1	Total	Ca	0	0
			1	1		

- Molecule 3 is BENZAMIDINE (three-letter code: BEN) (formula: C₇H₈N₂).



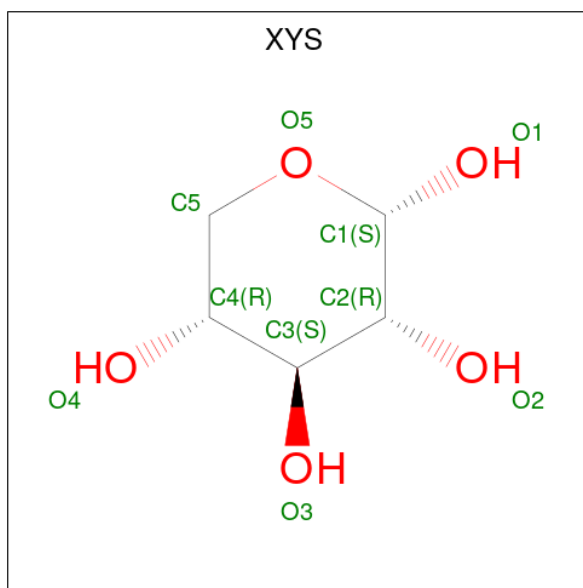
Mol	Chain	Residues	Atoms				ZeroOcc	AltConf
3	A	1	Total	C	H	N	0	0
			16	7	7	2		

- Molecule 4 is SULFATE ION (three-letter code: SO4) (formula: O₄S).



Mol	Chain	Residues	Atoms			ZeroOcc	AltConf
4	A	1	Total	O	S	0	0
			5	4	1		

- Molecule 5 is alpha-D-xylopyranose (three-letter code: XYZ) (formula: C₅H₁₀O₅).



Mol	Chain	Residues	Atoms				ZeroOcc	AltConf
5	A	1	Total	C	H	O	0	0
			18	5	8	5		

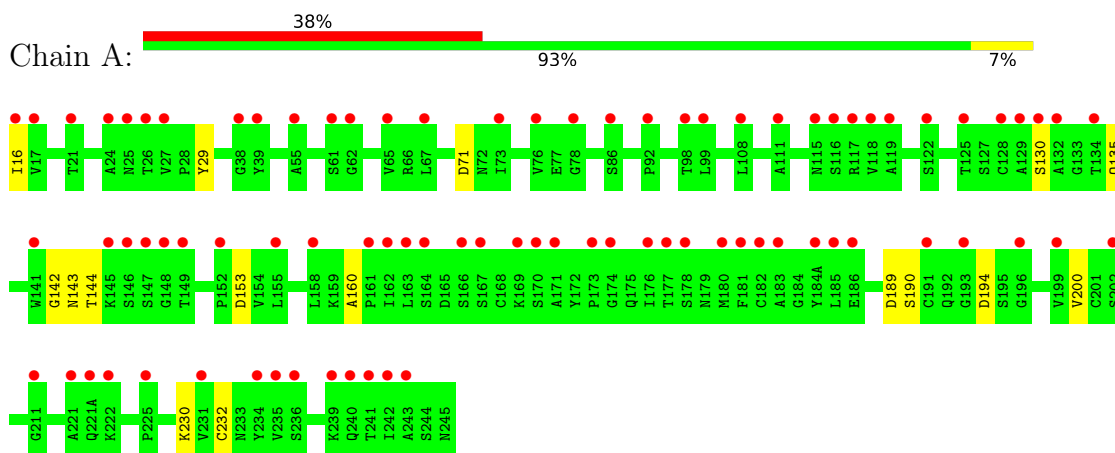
- Molecule 6 is water.

Mol	Chain	Residues	Atoms		ZeroOcc	AltConf
6	A	82	Total	O	0	0
			82	82		

3 Residue-property plots [i](#)

These plots are drawn for all protein, RNA, DNA and oligosaccharide chains in the entry. The first graphic for a chain summarises the proportions of the various outlier classes displayed in the second graphic. The second graphic shows the sequence view annotated by issues in geometry and electron density. Residues are color-coded according to the number of geometric quality criteria for which they contain at least one outlier: green = 0, yellow = 1, orange = 2 and red = 3 or more. A red dot above a residue indicates a poor fit to the electron density ($RSRZ > 2$). Stretches of 2 or more consecutive residues without any outlier are shown as a green connector. Residues present in the sample, but not in the model, are shown in grey.

- Molecule 1: Cationic trypsin



4 Data and refinement statistics

Property	Value	Source
Space group	P 21 21 21	Depositor
Cell constants a, b, c, α , β , γ	54.12Å 56.84Å 65.48Å 90.00° 90.00° 90.00°	Depositor
Resolution (Å)	13.45 – 2.20 13.45 – 2.20	Depositor EDS
% Data completeness (in resolution range)	97.3 (13.45-2.20) 87.8 (13.45-2.20)	Depositor EDS
R_{merge}	(Not available)	Depositor
R_{sym}	(Not available)	Depositor
$\langle I/\sigma(I) \rangle$ ¹	-0.41 (at 2.20Å)	Xtrriage
Refinement program	PHENIX 1.13_2998	Depositor
R, R_{free}	0.306 , 0.389 0.302 , 0.385	Depositor DCC
R_{free} test set	544 reflections (5.16%)	wwPDB-VP
Wilson B-factor (Å ²)	8.1	Xtrriage
Anisotropy	1.063	Xtrriage
Bulk solvent k_{sol} (e/Å ³), B_{sol} (Å ²)	0.42 , 40.9	EDS
L-test for twinning ²	$\langle L \rangle = 0.43$, $\langle L^2 \rangle = 0.27$	Xtrriage
Estimated twinning fraction	0.062 for k,h,-l	Xtrriage
F_o, F_c correlation	0.70	EDS
Total number of atoms	3375	wwPDB-VP
Average B, all atoms (Å ²)	28.0	wwPDB-VP

Xtrriage's analysis on translational NCS is as follows: *The largest off-origin peak in the Patterson function is 7.87% of the height of the origin peak. No significant pseudotranslation is detected.*

¹Intensities estimated from amplitudes.

²Theoretical values of $\langle |L| \rangle$, $\langle L^2 \rangle$ for acentric reflections are 0.5, 0.333 respectively for untwinned datasets, and 0.375, 0.2 for perfectly twinned datasets.

5 Model quality [i](#)

5.1 Standard geometry [i](#)

Bond lengths and bond angles in the following residue types are not validated in this section: YYS, BEN, SO4, CA

The Z score for a bond length (or angle) is the number of standard deviations the observed value is removed from the expected value. A bond length (or angle) with $|Z| > 5$ is considered an outlier worth inspection. RMSZ is the root-mean-square of all Z scores of the bond lengths (or angles).

Mol	Chain	Bond lengths		Bond angles	
		RMSZ	# Z >5	RMSZ	# Z >5
1	A	0.26	0/1695	0.44	0/2298

There are no bond length outliers.

There are no bond angle outliers.

There are no chirality outliers.

There are no planarity outliers.

5.2 Too-close contacts [i](#)

In the following table, the Non-H and H(model) columns list the number of non-hydrogen atoms and hydrogen atoms in the chain respectively. The H(added) column lists the number of hydrogen atoms added and optimized by MolProbity. The Clashes column lists the number of clashes within the asymmetric unit, whereas Symm-Clashes lists symmetry-related clashes.

Mol	Chain	Non-H	H(model)	H(added)	Clashes	Symm-Clashes
1	A	1647	1606	1584	9	0
2	A	1	0	0	0	0
3	A	9	7	7	0	0
4	A	5	0	0	0	0
5	A	10	8	10	0	0
6	A	82	0	0	3	0
All	All	1754	1621	1601	9	0

The all-atom clashscore is defined as the number of clashes found per 1000 atoms (including hydrogen atoms). The all-atom clashscore for this structure is 3.

All (9) close contacts within the same asymmetric unit are listed below, sorted by their clash magnitude.

Atom-1	Atom-2	Interatomic distance (Å)	Clash overlap (Å)
1:A:71:ASP:OD2	6:A:401:HOH:O	2.12	0.68
1:A:189:ASP:OD1	1:A:190:SER:N	2.26	0.68
1:A:135:GLN:OE1	1:A:160:ALA:N	2.28	0.66
1:A:153:ASP:OD2	6:A:402:HOH:O	2.13	0.66
1:A:16:ILE:N	6:A:405:HOH:O	2.37	0.57
1:A:29:TYR:CZ	1:A:200:VAL:HG21	2.43	0.53
1:A:142:GLY:N	1:A:194:ASP:OD1	2.46	0.41
1:A:143:ASN:OD1	1:A:144:THR:N	2.54	0.41
1:A:230:LYS:HG2	1:A:232:CYS:SG	2.61	0.41

There are no symmetry-related clashes.

5.3 Torsion angles [i](#)

5.3.1 Protein backbone [i](#)

In the following table, the Percentiles column shows the percent Ramachandran outliers of the chain as a percentile score with respect to all X-ray entries followed by that with respect to entries of similar resolution.

The Analysed column shows the number of residues for which the backbone conformation was analysed, and the total number of residues.

Mol	Chain	Analysed	Favoured	Allowed	Outliers	Percentiles
1	A	227/223 (102%)	216 (95%)	11 (5%)	0	100 100

There are no Ramachandran outliers to report.

5.3.2 Protein sidechains [i](#)

In the following table, the Percentiles column shows the percent sidechain outliers of the chain as a percentile score with respect to all X-ray entries followed by that with respect to entries of similar resolution.

The Analysed column shows the number of residues for which the sidechain conformation was analysed, and the total number of residues.

Mol	Chain	Analysed	Rotameric	Outliers	Percentiles
1	A	188/184 (102%)	187 (100%)	1 (0%)	88 94

All (1) residues with a non-rotameric sidechain are listed below:

Mol	Chain	Res	Type
1	A	130	SER

Sometimes sidechains can be flipped to improve hydrogen bonding and reduce clashes. There are no such sidechains identified.

5.3.3 RNA [i](#)

There are no RNA molecules in this entry.

5.4 Non-standard residues in protein, DNA, RNA chains [i](#)

There are no non-standard protein/DNA/RNA residues in this entry.

5.5 Carbohydrates [i](#)

There are no monosaccharides in this entry.

5.6 Ligand geometry [i](#)

Of 4 ligands modelled in this entry, 1 is monoatomic - leaving 3 for Mogul analysis.

In the following table, the Counts columns list the number of bonds (or angles) for which Mogul statistics could be retrieved, the number of bonds (or angles) that are observed in the model and the number of bonds (or angles) that are defined in the Chemical Component Dictionary. The Link column lists molecule types, if any, to which the group is linked. The Z score for a bond length (or angle) is the number of standard deviations the observed value is removed from the expected value. A bond length (or angle) with $|Z| > 2$ is considered an outlier worth inspection. RMSZ is the root-mean-square of all Z scores of the bond lengths (or angles).

Mol	Type	Chain	Res	Link	Bond lengths			Bond angles		
					Counts	RMSZ	$\# Z > 2$	Counts	RMSZ	$\# Z > 2$
4	SO4	A	303	-	4,4,4	0.14	0	6,6,6	0.05	0
5	XYS	A	304	-	10,10,10	1.82	1 (10%)	14,14,14	1.17	2 (14%)
3	BEN	A	302	-	9,9,9	1.35	1 (11%)	7,11,11	0.83	0

In the following table, the Chirals column lists the number of chiral outliers, the number of chiral centers analysed, the number of these observed in the model and the number defined in the Chemical Component Dictionary. Similar counts are reported in the Torsion and Rings columns. '-' means no outliers of that kind were identified.

Mol	Type	Chain	Res	Link	Chirals	Torsions	Rings
5	XYS	A	304	-	-	-	0/1/1/1
3	BEN	A	302	-	-	0/4/4/4	0/1/1/1

All (2) bond length outliers are listed below:

Mol	Chain	Res	Type	Atoms	Z	Observed(Å)	Ideal(Å)
5	A	304	XYS	O5-C1	-5.41	1.35	1.43
3	A	302	BEN	C1-C	-3.80	1.40	1.47

All (2) bond angle outliers are listed below:

Mol	Chain	Res	Type	Atoms	Z	Observed(°)	Ideal(°)
5	A	304	XYS	C5-C4-C3	2.67	112.95	109.67
5	A	304	XYS	O5-C5-C4	2.59	114.77	110.77

There are no chirality outliers.

There are no torsion outliers.

There are no ring outliers.

No monomer is involved in short contacts.

5.7 Other polymers [i](#)

There are no such residues in this entry.

5.8 Polymer linkage issues [i](#)

There are no chain breaks in this entry.

6 Fit of model and data [i](#)

6.1 Protein, DNA and RNA chains [i](#)

In the following table, the column labelled ‘#RSRZ> 2’ contains the number (and percentage) of RSRZ outliers, followed by percent RSRZ outliers for the chain as percentile scores relative to all X-ray entries and entries of similar resolution. The OWAB column contains the minimum, median, 95th percentile and maximum values of the occupancy-weighted average B-factor per residue. The column labelled ‘Q< 0.9’ lists the number of (and percentage) of residues with an average occupancy less than 0.9.

Mol	Chain	Analysed	<RSRZ>	#RSRZ>2	OWAB(Å ²)	Q<0.9
1	A	223/223 (100%)	1.85	84 (37%) 0 0	9, 24, 43, 68	0

All (84) RSRZ outliers are listed below:

Mol	Chain	Res	Type	RSRZ
1	A	146	SER	7.0
1	A	132	ALA	6.3
1	A	166	SER	5.8
1	A	116	SER	5.7
1	A	147	SER	5.3
1	A	61	SER	5.2
1	A	171[A]	ALA	4.7
1	A	115	ASN	4.5
1	A	16	ILE	4.4
1	A	125	THR	4.3
1	A	117	ARG	3.8
1	A	170[A]	SER	3.6
1	A	149	THR	3.4
1	A	76	VAL	3.4
1	A	163	LEU	3.4
1	A	222	LYS	3.3
1	A	167	SER	3.2
1	A	67	LEU	3.2
1	A	99	LEU	3.2
1	A	148	GLY	3.1
1	A	119	ALA	3.1
1	A	129	ALA	3.1
1	A	158	LEU	3.1
1	A	180	MET	3.0
1	A	186	GLU	3.0
1	A	221	ALA	3.0
1	A	152	PRO	3.0

Continued on next page...

Continued from previous page...

Mol	Chain	Res	Type	RSRZ
1	A	178	SER	2.9
1	A	17	VAL	2.9
1	A	128	CYS	2.9
1	A	38	GLY	2.8
1	A	25	ASN	2.8
1	A	221(A)	GLN	2.7
1	A	21	THR	2.7
1	A	196	GLY	2.7
1	A	185	LEU	2.7
1	A	174	GLY	2.6
1	A	164	SER	2.6
1	A	184(A)	TYR	2.6
1	A	130	SER	2.6
1	A	169	LYS	2.6
1	A	176	ILE	2.5
1	A	173	PRO	2.5
1	A	242	ILE	2.5
1	A	240	GLN	2.5
1	A	122[A]	SER	2.5
1	A	177	THR	2.5
1	A	225	PRO	2.5
1	A	231	VAL	2.5
1	A	243	ALA	2.5
1	A	199	VAL	2.4
1	A	26	THR	2.4
1	A	161	PRO	2.4
1	A	39	TYR	2.4
1	A	73	ILE	2.4
1	A	181	PHE	2.4
1	A	62	GLY	2.4
1	A	191	CYS	2.4
1	A	234	TYR	2.4
1	A	211	GLY	2.4
1	A	145	LYS	2.3
1	A	55	ALA	2.3
1	A	202	SER	2.3
1	A	108	LEU	2.3
1	A	27	VAL	2.2
1	A	92	PRO	2.2
1	A	86	SER	2.2
1	A	98	THR	2.2
1	A	182	CYS	2.2

Continued on next page...

Continued from previous page...

Mol	Chain	Res	Type	RSRZ
1	A	118	VAL	2.2
1	A	162	ILE	2.2
1	A	155	LEU	2.2
1	A	24	ALA	2.1
1	A	241	THR	2.1
1	A	141	TRP	2.1
1	A	239	LYS	2.1
1	A	65	VAL	2.1
1	A	235	VAL	2.1
1	A	134	THR	2.1
1	A	236	SER	2.1
1	A	78	GLY	2.1
1	A	193	GLY	2.0
1	A	111	ALA	2.0
1	A	183	ALA	2.0

6.2 Non-standard residues in protein, DNA, RNA chains [i](#)

There are no non-standard protein/DNA/RNA residues in this entry.

6.3 Carbohydrates [i](#)

There are no monosaccharides in this entry.

6.4 Ligands [i](#)

In the following table, the Atoms column lists the number of modelled atoms in the group and the number defined in the chemical component dictionary. The B-factors column lists the minimum, median, 95th percentile and maximum values of B factors of atoms in the group. The column labelled 'Q< 0.9' lists the number of atoms with occupancy less than 0.9.

Mol	Type	Chain	Res	Atoms	RSCC	RSR	B-factors(Å ²)	Q<0.9
4	SO4	A	303	5/5	0.62	0.50	14,53,102,132	0
3	BEN	A	302	9/9	0.71	0.25	10,18,33,40	0
5	XYS	A	304	10/10	0.78	0.39	25,56,83,84	0
2	CA	A	301	1/1	0.88	0.06	13,13,13,13	0

6.5 Other polymers [i](#)

There are no such residues in this entry.