



Full wwPDB X-ray Structure Validation Report ⓘ

Oct 15, 2023 – 09:24 AM EDT

PDB ID : 8DYQ
Title : Crystal structure of Neisseria gonorrhoeae carbonic anhydrase with Acetazolamide
Authors : Marapaka, A.K.; Das, C.; Flaherty, D.P.; Yadav, R.
Deposited on : 2022-08-04
Resolution : 2.15 Å (reported)

This is a Full wwPDB X-ray Structure Validation Report for a publicly released PDB entry.

We welcome your comments at validation@mail.wwpdb.org

A user guide is available at

<https://www.wwpdb.org/validation/2017/XrayValidationReportHelp>

with specific help available everywhere you see the ⓘ symbol.

The types of validation reports are described at

<http://www.wwpdb.org/validation/2017/FAQs#types>.

The following versions of software and data (see [references ⓘ](#)) were used in the production of this report:

MolProbity : 4.02b-467
Mogul : 1.8.5 (274361), CSD as541be (2020)
Xtriage (Phenix) : 1.13
EDS : 2.36
buster-report : 1.1.7 (2018)
Percentile statistics : 20191225.v01 (using entries in the PDB archive December 25th 2019)
Refmac : 5.8.0158
CCP4 : 7.0.044 (Gargrove)
Ideal geometry (proteins) : Engh & Huber (2001)
Ideal geometry (DNA, RNA) : Parkinson et al. (1996)
Validation Pipeline (wwPDB-VP) : 2.36

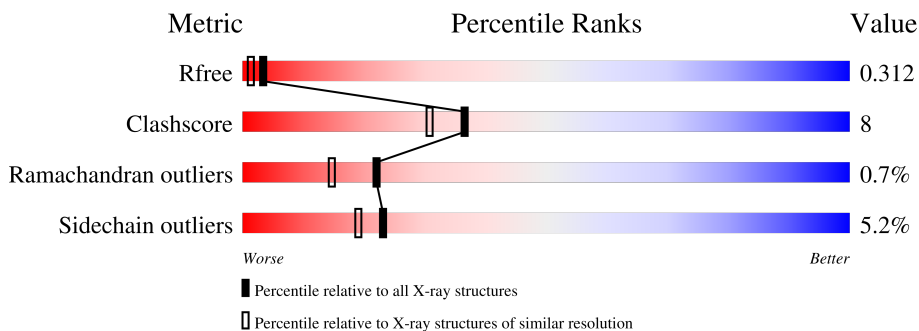
1 Overall quality at a glance

The following experimental techniques were used to determine the structure:

X-RAY DIFFRACTION

The reported resolution of this entry is 2.15 Å.

Percentile scores (ranging between 0-100) for global validation metrics of the entry are shown in the following graphic. The table shows the number of entries on which the scores are based.



Metric	Whole archive (#Entries)	Similar resolution (#Entries, resolution range(Å))
R_{free}	130704	1479 (2.16-2.16)
Clashscore	141614	1585 (2.16-2.16)
Ramachandran outliers	138981	1560 (2.16-2.16)
Sidechain outliers	138945	1559 (2.16-2.16)

The table below summarises the geometric issues observed across the polymeric chains and their fit to the electron density. The red, orange, yellow and green segments of the lower bar indicate the fraction of residues that contain outliers for ≥ 3 , 2, 1 and 0 types of geometric quality criteria respectively. A grey segment represents the fraction of residues that are not modelled. The numeric value for each fraction is indicated below the corresponding segment, with a dot representing fractions $\leq 5\%$.

Mol	Chain	Length	Quality of chain
1	A	243	75% (green), 16% (yellow), 9% (grey)
1	C	243	70% (green), 18% (yellow), 9% (grey)
1	E	243	69% (green), 20% (yellow), 9% (grey)
1	G	243	72% (green), 19% (yellow), 9% (grey)

2 Entry composition i

There are 5 unique types of molecules in this entry. The entry contains 7109 atoms, of which 0 are hydrogens and 0 are deuteriums.

In the tables below, the ZeroOcc column contains the number of atoms modelled with zero occupancy, the AltConf column contains the number of residues with at least one atom in alternate conformation and the Trace column contains the number of residues modelled with at most 2 atoms.

- Molecule 1 is a protein called Carbonic anhydrase.

Mol	Chain	Residues	Atoms					ZeroOcc	AltConf	Trace
			Total	C	N	O	S			
1	A	222	Total 1746	C 1105	N 306	O 329	S 6	0	1	0
1	C	222	Total 1733	C 1097	N 306	O 324	S 6	0	0	0
1	E	222	Total 1741	C 1102	N 306	O 327	S 6	0	1	0
1	G	222	Total 1756	C 1110	N 309	O 331	S 6	0	1	0

There are 68 discrepancies between the modelled and reference sequences:

Chain	Residue	Modelled	Actual	Comment	Reference
A	-16	HIS	-	expression tag	UNP Q50940
A	-15	HIS	-	expression tag	UNP Q50940
A	-14	HIS	-	expression tag	UNP Q50940
A	-13	HIS	-	expression tag	UNP Q50940
A	-12	HIS	-	expression tag	UNP Q50940
A	-11	HIS	-	expression tag	UNP Q50940
A	-10	ASP	-	expression tag	UNP Q50940
A	-9	SER	-	expression tag	UNP Q50940
A	-8	GLY	-	expression tag	UNP Q50940
A	-7	LEU	-	expression tag	UNP Q50940
A	-6	VAL	-	expression tag	UNP Q50940
A	-5	PRO	-	expression tag	UNP Q50940
A	-4	ARG	-	expression tag	UNP Q50940
A	-3	GLY	-	expression tag	UNP Q50940
A	-2	SER	-	expression tag	UNP Q50940
A	-1	HIS	-	expression tag	UNP Q50940
A	0	MET	-	expression tag	UNP Q50940
C	-16	HIS	-	expression tag	UNP Q50940
C	-15	HIS	-	expression tag	UNP Q50940
C	-14	HIS	-	expression tag	UNP Q50940
C	-13	HIS	-	expression tag	UNP Q50940

Continued on next page...

Continued from previous page...

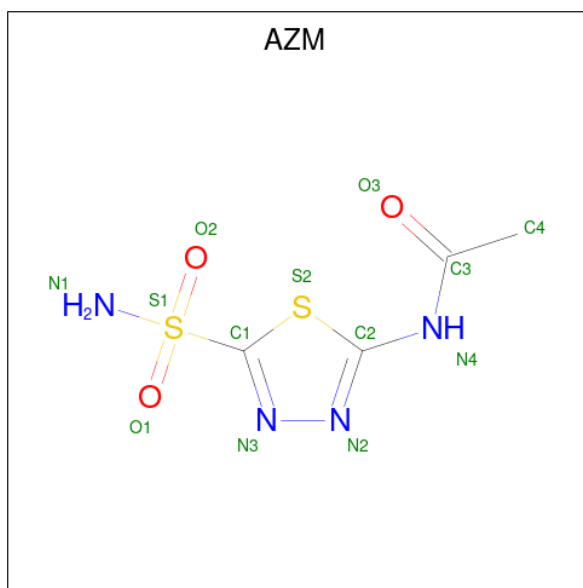
Chain	Residue	Modelled	Actual	Comment	Reference
C	-12	HIS	-	expression tag	UNP Q50940
C	-11	HIS	-	expression tag	UNP Q50940
C	-10	ASP	-	expression tag	UNP Q50940
C	-9	SER	-	expression tag	UNP Q50940
C	-8	GLY	-	expression tag	UNP Q50940
C	-7	LEU	-	expression tag	UNP Q50940
C	-6	VAL	-	expression tag	UNP Q50940
C	-5	PRO	-	expression tag	UNP Q50940
C	-4	ARG	-	expression tag	UNP Q50940
C	-3	GLY	-	expression tag	UNP Q50940
C	-2	SER	-	expression tag	UNP Q50940
C	-1	HIS	-	expression tag	UNP Q50940
C	0	MET	-	expression tag	UNP Q50940
E	-16	HIS	-	expression tag	UNP Q50940
E	-15	HIS	-	expression tag	UNP Q50940
E	-14	HIS	-	expression tag	UNP Q50940
E	-13	HIS	-	expression tag	UNP Q50940
E	-12	HIS	-	expression tag	UNP Q50940
E	-11	HIS	-	expression tag	UNP Q50940
E	-10	ASP	-	expression tag	UNP Q50940
E	-9	SER	-	expression tag	UNP Q50940
E	-8	GLY	-	expression tag	UNP Q50940
E	-7	LEU	-	expression tag	UNP Q50940
E	-6	VAL	-	expression tag	UNP Q50940
E	-5	PRO	-	expression tag	UNP Q50940
E	-4	ARG	-	expression tag	UNP Q50940
E	-3	GLY	-	expression tag	UNP Q50940
E	-2	SER	-	expression tag	UNP Q50940
E	-1	HIS	-	expression tag	UNP Q50940
E	0	MET	-	expression tag	UNP Q50940
G	-16	HIS	-	expression tag	UNP Q50940
G	-15	HIS	-	expression tag	UNP Q50940
G	-14	HIS	-	expression tag	UNP Q50940
G	-13	HIS	-	expression tag	UNP Q50940
G	-12	HIS	-	expression tag	UNP Q50940
G	-11	HIS	-	expression tag	UNP Q50940
G	-10	ASP	-	expression tag	UNP Q50940
G	-9	SER	-	expression tag	UNP Q50940
G	-8	GLY	-	expression tag	UNP Q50940
G	-7	LEU	-	expression tag	UNP Q50940
G	-6	VAL	-	expression tag	UNP Q50940
G	-5	PRO	-	expression tag	UNP Q50940

Continued on next page...

Continued from previous page...

Chain	Residue	Modelled	Actual	Comment	Reference
G	-4	ARG	-	expression tag	UNP Q50940
G	-3	GLY	-	expression tag	UNP Q50940
G	-2	SER	-	expression tag	UNP Q50940
G	-1	HIS	-	expression tag	UNP Q50940
G	0	MET	-	expression tag	UNP Q50940

- Molecule 2 is 5-ACETAMIDO-1,3,4-THIADIAZOLE-2-SULFONAMIDE (three-letter code: AZM) (formula: C₄H₆N₄O₃S₂) (labeled as "Ligand of Interest" by depositor).



Mol	Chain	Residues	Atoms					ZeroOcc	AltConf
			Total	C	N	O	S		
2	A	1	Total	C	N	O	S	0	0
13	4	4	3	2					
2	C	1	Total	C	N	O	S	0	0
13	4	4	3	2					
2	E	1	Total	C	N	O	S	0	0
13	4	4	3	2					
2	G	1	Total	C	N	O	S	0	0
13	4	4	3	2					

- Molecule 3 is ZINC ION (three-letter code: ZN) (formula: Zn).

Mol	Chain	Residues	Atoms		ZeroOcc	AltConf
			Total	Zn		
3	A	1	Total	Zn	0	0
1	1					
3	C	1	Total	Zn	0	0
1	1					

Continued on next page...

Continued from previous page...

Mol	Chain	Residues	Atoms		ZeroOcc	AltConf
3	E	1	Total	Zn	0	0
			1	1		
3	G	1	Total	Zn	0	0
			1	1		

- Molecule 4 is SULFATE ION (three-letter code: SO4) (formula: O₄S).



Mol	Chain	Residues	Atoms			ZeroOcc	AltConf
4	A	1	Total	O	S	0	0
			5	4	1		
4	C	1	Total	O	S	0	0
			5	4	1		
4	C	1	Total	O	S	0	0
			5	4	1		
4	E	1	Total	O	S	0	0
			5	4	1		
4	E	1	Total	O	S	0	0
			5	4	1		
4	E	1	Total	O	S	0	0
			5	4	1		
4	E	1	Total	O	S	0	0
			5	4	1		
4	G	1	Total	O	S	0	0
			5	4	1		

- Molecule 5 is water.

Mol	Chain	Residues	Atoms		ZeroOcc	AltConf
5	A	10	Total 10	O 10	0	0
5	C	11	Total 11	O 11	0	0
5	E	9	Total 9	O 9	0	0
5	G	7	Total 7	O 7	0	0



4 Data and refinement statistics

Property	Value	Source
Space group	P 1 21 1	Depositor
Cell constants a, b, c, α , β , γ	71.97Å 122.59Å 78.35Å 90.00° 117.21° 90.00°	Depositor
Resolution (Å)	46.02 – 2.15 46.02 – 2.15	Depositor EDS
% Data completeness (in resolution range)	91.6 (46.02-2.15) 91.1 (46.02-2.15)	Depositor EDS
R_{merge}	0.14	Depositor
R_{sym}	(Not available)	Depositor
$\langle I/\sigma(I) \rangle$ ¹	2.18 (at 2.16Å)	Xtrriage
Refinement program	REFMAC 5.8.0352	Depositor
R, R_{free}	0.259 , 0.314 0.263 , 0.312	Depositor DCC
R_{free} test set	2850 reflections (4.74%)	wwPDB-VP
Wilson B-factor (Å ²)	27.6	Xtrriage
Anisotropy	0.098	Xtrriage
Bulk solvent k_{sol} (e/Å ³), B_{sol} (Å ²)	0.36 , 10.2	EDS
L-test for twinning ²	$\langle L \rangle = 0.39$, $\langle L^2 \rangle = 0.22$	Xtrriage
Estimated twinning fraction	0.377 for h,-k,-h-l	Xtrriage
F_o, F_c correlation	0.93	EDS
Total number of atoms	7109	wwPDB-VP
Average B, all atoms (Å ²)	27.0	wwPDB-VP

Xtrriage's analysis on translational NCS is as follows: *The largest off-origin peak in the Patterson function is 3.86% of the height of the origin peak. No significant pseudotranslation is detected.*

¹Intensities estimated from amplitudes.

²Theoretical values of $\langle |L| \rangle$, $\langle L^2 \rangle$ for acentric reflections are 0.5, 0.333 respectively for untwinned datasets, and 0.375, 0.2 for perfectly twinned datasets.

5 Model quality [i](#)

5.1 Standard geometry [i](#)

Bond lengths and bond angles in the following residue types are not validated in this section: AZM, SO4, ZN

The Z score for a bond length (or angle) is the number of standard deviations the observed value is removed from the expected value. A bond length (or angle) with $|Z| > 5$ is considered an outlier worth inspection. RMSZ is the root-mean-square of all Z scores of the bond lengths (or angles).

Mol	Chain	Bond lengths		Bond angles	
		RMSZ	# Z >5	RMSZ	# Z >5
1	A	0.46	0/1795	0.80	0/2445
1	C	0.42	0/1779	0.82	1/2423 (0.0%)
1	E	0.45	0/1790	0.85	0/2439
1	G	0.42	0/1805	0.81	1/2457 (0.0%)
All	All	0.43	0/7169	0.82	2/9764 (0.0%)

Chiral center outliers are detected by calculating the chiral volume of a chiral center and verifying if the center is modelled as a planar moiety or with the opposite hand. A planarity outlier is detected by checking planarity of atoms in a peptide group, atoms in a mainchain group or atoms of a sidechain that are expected to be planar.

Mol	Chain	#Chirality outliers	#Planarity outliers
1	A	0	1
1	C	0	2
1	E	0	3
1	G	0	1
All	All	0	7

There are no bond length outliers.

All (2) bond angle outliers are listed below:

Mol	Chain	Res	Type	Atoms	Z	Observed(°)	Ideal(°)
1	G	41	GLU	CB-CA-C	-5.78	98.84	110.40
1	C	156	PRO	N-CD-CG	-5.64	94.75	103.20

There are no chirality outliers.

All (7) planarity outliers are listed below:

Mol	Chain	Res	Type	Group
1	A	84	ARG	Sidechain
1	C	26	ARG	Sidechain
1	C	84	ARG	Sidechain
1	E	166	ARG	Sidechain
1	E	222	ARG	Sidechain
1	E	84	ARG	Sidechain
1	G	166	ARG	Sidechain

5.2 Too-close contacts [i](#)

In the following table, the Non-H and H(model) columns list the number of non-hydrogen atoms and hydrogen atoms in the chain respectively. The H(added) column lists the number of hydrogen atoms added and optimized by MolProbity. The Clashes column lists the number of clashes within the asymmetric unit, whereas Symm-Clashes lists symmetry-related clashes.

Mol	Chain	Non-H	H(model)	H(added)	Clashes	Symm-Clashes
1	A	1746	0	1701	25	0
1	C	1733	0	1683	32	0
1	E	1741	0	1691	33	0
1	G	1756	0	1716	22	0
2	A	13	0	5	0	0
2	C	13	0	6	2	0
2	E	13	0	6	2	0
2	G	13	0	6	0	0
3	A	1	0	0	0	0
3	C	1	0	0	0	0
3	E	1	0	0	0	0
3	G	1	0	0	0	0
4	A	5	0	0	0	0
4	C	10	0	0	1	0
4	E	20	0	0	1	0
4	G	5	0	0	0	0
5	A	10	0	0	2	0
5	C	11	0	0	0	0
5	E	9	0	0	0	0
5	G	7	0	0	0	0
All	All	7109	0	6814	109	0

The all-atom clashscore is defined as the number of clashes found per 1000 atoms (including hydrogen atoms). The all-atom clashscore for this structure is 8.

All (109) close contacts within the same asymmetric unit are listed below, sorted by their clash magnitude.

Atom-1	Atom-2	Interatomic distance (Å)	Clash overlap (Å)
1:A:50:ILE:HG23	1:A:79:LEU:HD21	1.60	0.84
1:C:34:GLN:HE22	1:C:181:CYS:HB3	1.51	0.76
1:C:34:GLN:HE21	1:C:214:ARG:HH12	1.35	0.72
1:C:132:LYS:NZ	4:C:303:SO4:O4	2.24	0.70
1:A:54:TYR:CE2	1:A:163:LEU:HD11	2.27	0.70
1:C:34:GLN:NE2	1:C:214:ARG:HH12	1.90	0.70
1:C:152:LYS:HD2	1:C:153:LEU:N	2.07	0.69
1:E:107:PRO:HB2	1:E:196:ILE:HD11	1.77	0.66
1:E:153:LEU:HB3	1:E:155:GLN:O	1.97	0.65
1:C:39:ILE:HG23	1:C:224:VAL:HG11	1.79	0.64
1:G:11:GLY:C	1:G:13:ASP:H	2.03	0.62
1:C:178:THR:OG1	2:C:301:AZM:N3	2.35	0.59
1:E:79:LEU:C	1:E:79:LEU:HD23	2.22	0.59
1:A:52:VAL:HG11	1:A:163:LEU:HD12	1.83	0.58
1:C:155:GLN:O	1:C:156:PRO:C	2.42	0.57
1:A:107:PRO:HD2	1:A:128:TYR:O	2.05	0.56
1:C:152:LYS:HD2	1:C:153:LEU:H	1.70	0.56
1:C:145:PRO:HG3	1:C:151:VAL:HG23	1.85	0.56
1:E:66:HIS:O	1:E:208:VAL:HG11	2.05	0.56
1:A:79:LEU:HD11	1:A:124:LEU:HD22	1.88	0.56
1:E:14:SER:HB2	1:E:15:PRO:CD	2.36	0.55
1:C:155:GLN:O	1:C:157:PHE:N	2.40	0.55
5:A:410:HOH:O	1:G:202:GLU:HG3	2.07	0.54
1:E:9:TYR:CE2	1:E:212:ASN:HB2	2.42	0.54
1:C:118:ASN:O	1:C:119:LYS:HB2	2.08	0.53
1:G:86:TYR:HB3	1:G:114:HIS:HB3	1.91	0.53
1:E:60:ASP:HB3	1:E:150:LYS:HD2	1.89	0.53
1:E:14:SER:HB2	1:E:15:PRO:HD3	1.89	0.52
1:A:101:ILE:O	1:A:104:ARG:HB3	2.10	0.51
1:A:214:ARG:HG2	1:A:215:PRO:HD2	1.93	0.51
1:E:36:PRO:HG3	1:E:98:GLU:HB3	1.91	0.51
1:G:136:ARG:HD2	1:G:161:THR:O	2.11	0.51
1:E:139:SER:O	1:E:142[B]:ASN:ND2	2.44	0.50
1:A:104:ARG:HA	1:G:211:GLU:OE1	2.11	0.50
1:A:36:PRO:HA	5:A:401:HOH:O	2.12	0.50
1:A:129:GLU:O	1:A:195:HIS:HA	2.11	0.49
1:E:136:ARG:HD2	1:E:161:THR:O	2.12	0.49
1:C:126:VAL:HG22	1:C:190:LEU:HD12	1.94	0.49
1:G:187:TRP:C	1:G:188:LEU:HD12	2.33	0.49
1:C:151:VAL:HG12	1:C:154:ASN:CB	2.43	0.49
1:A:35:SER:O	1:A:214:ARG:NH1	2.44	0.48
1:A:80:THR:HA	1:A:84:ARG:O	2.13	0.48

Continued on next page...

Continued from previous page...

Atom-1	Atom-2	Interatomic distance (Å)	Clash overlap (Å)
1:C:152:LYS:O	1:C:154:ASN:CB	2.61	0.48
1:E:128:TYR:CD2	1:E:194:ASP:HB3	2.48	0.48
1:C:172:PHE:HB3	1:C:224:VAL:HG22	1.96	0.48
1:G:143:VAL:HG21	1:G:153:LEU:HD12	1.95	0.48
1:A:198:GLN:CD	1:A:198:GLN:H	2.16	0.47
1:G:36:PRO:HG3	1:G:98:GLU:HB3	1.96	0.47
1:C:170:TYR:CD1	1:C:226:GLU:HB3	2.49	0.47
1:G:122:LEU:HD21	1:G:188:LEU:HD13	1.97	0.47
1:C:177:THR:OG1	2:C:301:AZM:N1	2.47	0.47
1:E:14:SER:CB	1:E:15:PRO:CD	2.92	0.47
1:A:126:VAL:HG22	1:A:190:LEU:HD12	1.97	0.47
1:C:154:ASN:HA	1:E:73:PRO:HB3	1.96	0.47
1:A:136:ARG:HD2	1:A:161:THR:O	2.15	0.46
1:E:23:GLU:H	1:E:23:GLU:CD	2.18	0.46
1:G:58:MET:HA	1:G:58:MET:CE	2.46	0.46
1:E:101:ILE:O	1:E:102:LYS:C	2.54	0.46
1:E:178:THR:HG21	4:E:305:SO4:O2	2.16	0.46
1:A:50:ILE:HG23	1:A:79:LEU:CD2	2.38	0.46
1:C:116:ASP:CG	1:C:120:GLN:HB2	2.36	0.45
1:G:7:TRP:O	1:G:66:HIS:HE1	1.99	0.45
1:G:69:GLN:HE21	1:G:92:HIS:HB3	1.82	0.45
1:C:90:GLN:NE2	1:C:113:VAL:HG21	2.32	0.45
1:E:177:THR:OG1	2:E:301:AZM:N1	2.50	0.45
1:G:110:ALA:O	1:G:125:ALA:HA	2.16	0.45
1:C:51:LYS:N	1:C:51:LYS:HE3	2.32	0.45
1:G:146:MET:SD	1:G:207:ALA:HB2	2.57	0.44
1:E:33:ASN:HD22	1:E:222:ARG:HD3	1.82	0.44
1:A:96:PRO:HD2	1:A:213:ASN:OD1	2.17	0.44
1:G:169:TYR:CD2	1:G:188:LEU:HG	2.52	0.44
1:G:128:TYR:CD2	1:G:194:ASP:HB3	2.53	0.44
1:A:81:VAL:HG12	1:A:86:TYR:CE1	2.53	0.44
1:C:91:PHE:HA	1:C:111:HIS:O	2.17	0.44
1:E:15:PRO:HA	1:E:18:TRP:CD1	2.52	0.43
1:E:91:PHE:HA	1:E:111:HIS:O	2.18	0.43
1:G:204:PHE:C	1:G:204:PHE:CD1	2.91	0.43
1:E:40:THR:OG1	1:E:41:GLU:N	2.40	0.43
1:E:178:THR:OG1	2:E:301:AZM:N3	2.51	0.43
1:E:55:LYS:HB2	1:E:56:PRO:HD2	1.99	0.43
1:A:143:VAL:O	1:A:144:MET:C	2.57	0.43
1:G:14:SER:HB2	1:G:15:PRO:CD	2.48	0.43
1:G:7:TRP:O	1:G:66:HIS:CE1	2.71	0.43

Continued on next page...

Continued from previous page...

Atom-1	Atom-2	Interatomic distance (Å)	Clash overlap (Å)
1:C:42:THR:OG1	1:C:226:GLU:HG2	2.19	0.43
1:E:153:LEU:HD13	1:E:153:LEU:HA	1.90	0.43
1:A:81:VAL:CG1	1:A:86:TYR:CE1	3.01	0.42
1:G:187:TRP:O	1:G:188:LEU:HD12	2.19	0.42
1:C:128:TYR:CD2	1:C:194:ASP:HB3	2.54	0.42
1:E:87:THR:O	1:E:114:HIS:HA	2.19	0.42
1:E:51:LYS:O	1:E:79:LEU:HA	2.20	0.42
1:G:118:ASN:O	1:G:119:LYS:HB2	2.20	0.41
1:C:158:ASP:OD1	1:C:160:SER:HB3	2.20	0.41
1:E:9:TYR:CZ	1:E:212:ASN:HB2	2.55	0.41
1:C:34:GLN:HE21	1:C:214:ARG:NH1	2.08	0.41
1:A:120:GLN:HA	1:A:121:PRO:HD3	1.94	0.41
1:E:110:ALA:O	1:E:125:ALA:HA	2.20	0.41
1:E:187:TRP:C	1:E:188:LEU:HD12	2.41	0.41
1:A:46:LYS:HD3	1:C:44:SER:HB3	2.02	0.41
1:C:19:GLY:O	1:C:26:ARG:HD3	2.21	0.41
1:C:93:PHE:HB2	1:C:204:PHE:CE2	2.55	0.41
1:C:171:ARG:HH11	1:C:171:ARG:HG3	1.85	0.41
1:G:70:VAL:O	1:G:90:GLN:HA	2.20	0.41
1:A:95:VAL:HA	1:A:96:PRO:HA	1.88	0.41
1:C:197:ASP:OD1	1:C:200:GLN:HG3	2.21	0.41
1:A:81:VAL:CG1	1:A:86:TYR:HE1	2.34	0.40
1:A:15:PRO:HA	1:A:18:TRP:CE2	2.56	0.40
1:E:51:LYS:HD2	1:E:51:LYS:N	2.37	0.40
1:E:59:VAL:HG23	1:E:153:LEU:HD23	2.02	0.40
1:E:7:TRP:O	1:E:66:HIS:HE1	2.05	0.40

There are no symmetry-related clashes.

5.3 Torsion angles [\(i\)](#)

5.3.1 Protein backbone [\(i\)](#)

In the following table, the Percentiles column shows the percent Ramachandran outliers of the chain as a percentile score with respect to all X-ray entries followed by that with respect to entries of similar resolution.

The Analysed column shows the number of residues for which the backbone conformation was analysed, and the total number of residues.

Mol	Chain	Analysed	Favoured	Allowed	Outliers	Percentiles	
1	A	221/243 (91%)	212 (96%)	8 (4%)	1 (0%)	29	22
1	C	220/243 (90%)	209 (95%)	9 (4%)	2 (1%)	17	11
1	E	221/243 (91%)	208 (94%)	12 (5%)	1 (0%)	29	22
1	G	221/243 (91%)	207 (94%)	12 (5%)	2 (1%)	17	11
All	All	883/972 (91%)	836 (95%)	41 (5%)	6 (1%)	22	15

All (6) Ramachandran outliers are listed below:

Mol	Chain	Res	Type
1	C	156	PRO
1	A	75	GLY
1	C	155	GLN
1	G	119	LYS
1	G	12	HIS
1	E	156	PRO

5.3.2 Protein sidechains [i](#)

In the following table, the Percentiles column shows the percent sidechain outliers of the chain as a percentile score with respect to all X-ray entries followed by that with respect to entries of similar resolution.

The Analysed column shows the number of residues for which the sidechain conformation was analysed, and the total number of residues.

Mol	Chain	Analysed	Rotameric	Outliers	Percentiles	
1	A	193/213 (91%)	187 (97%)	6 (3%)	40	39
1	C	189/213 (89%)	178 (94%)	11 (6%)	20	15
1	E	191/213 (90%)	179 (94%)	12 (6%)	18	13
1	G	195/213 (92%)	184 (94%)	11 (6%)	21	16
All	All	768/852 (90%)	728 (95%)	40 (5%)	23	19

All (40) residues with a non-rotameric sidechain are listed below:

Mol	Chain	Res	Type
1	A	5	THR
1	A	23	GLU
1	A	84	ARG
1	A	96	PRO
1	A	139	SER

Continued on next page...

Continued from previous page...

Mol	Chain	Res	Type
1	A	226	GLU
1	C	12	HIS
1	C	24	GLU
1	C	51	LYS
1	C	53	ASN
1	C	133	THR
1	C	152	LYS
1	C	160	SER
1	C	161	THR
1	C	165	LYS
1	C	166	ARG
1	C	226	GLU
1	E	5	THR
1	E	6	HIS
1	E	13	ASP
1	E	26	ARG
1	E	51	LYS
1	E	57	SER
1	E	79	LEU
1	E	133	THR
1	E	150	LYS
1	E	151	VAL
1	E	153	LEU
1	E	166	ARG
1	G	6	HIS
1	G	53	ASN
1	G	79	LEU
1	G	82	ASN
1	G	84	ARG
1	G	90	GLN
1	G	141	TRP
1	G	151	VAL
1	G	160	SER
1	G	182	THR
1	G	198	GLN

Sometimes sidechains can be flipped to improve hydrogen bonding and reduce clashes. All (14) such sidechains are listed below:

Mol	Chain	Res	Type
1	A	20	ASN
1	A	33	ASN
1	A	69	GLN

Continued on next page...

Continued from previous page...

Mol	Chain	Res	Type
1	A	82	ASN
1	C	33	ASN
1	C	34	GLN
1	C	82	ASN
1	E	33	ASN
1	E	66	HIS
1	E	120	GLN
1	G	33	ASN
1	G	66	HIS
1	G	69	GLN
1	G	82	ASN

5.3.3 RNA [i](#)

There are no RNA molecules in this entry.

5.4 Non-standard residues in protein, DNA, RNA chains [i](#)

There are no non-standard protein/DNA/RNA residues in this entry.

5.5 Carbohydrates [i](#)

There are no monosaccharides in this entry.

5.6 Ligand geometry [i](#)

Of 16 ligands modelled in this entry, 4 are monoatomic - leaving 12 for Mogul analysis.

In the following table, the Counts columns list the number of bonds (or angles) for which Mogul statistics could be retrieved, the number of bonds (or angles) that are observed in the model and the number of bonds (or angles) that are defined in the Chemical Component Dictionary. The Link column lists molecule types, if any, to which the group is linked. The Z score for a bond length (or angle) is the number of standard deviations the observed value is removed from the expected value. A bond length (or angle) with $|Z| > 2$ is considered an outlier worth inspection. RMSZ is the root-mean-square of all Z scores of the bond lengths (or angles).

Mol	Type	Chain	Res	Link	Bond lengths			Bond angles		
					Counts	RMSZ	# Z > 2	Counts	RMSZ	# Z > 2
2	AZM	E	301	3	8,13,13	3.05	4 (50%)	9,19,19	5.56	6 (66%)
2	AZM	G	301	3	8,13,13	3.63	5 (62%)	9,19,19	5.13	7 (77%)

Mol	Type	Chain	Res	Link	Bond lengths			Bond angles		
					Counts	RMSZ	# Z > 2	Counts	RMSZ	# Z > 2
2	AZM	C	301	3	8,13,13	3.74	4 (50%)	9,19,19	7.84	6 (66%)
4	SO4	C	303	-	4,4,4	0.26	0	6,6,6	0.10	0
4	SO4	C	304	-	4,4,4	0.40	0	6,6,6	0.16	0
4	SO4	E	303	-	4,4,4	0.28	0	6,6,6	0.07	0
4	SO4	E	304	-	4,4,4	0.35	0	6,6,6	0.21	0
4	SO4	E	305	-	4,4,4	0.32	0	6,6,6	0.25	0
2	AZM	A	301	3	8,13,13	3.51	6 (75%)	9,19,19	5.06	4 (44%)
4	SO4	E	306	-	4,4,4	0.37	0	6,6,6	0.17	0
4	SO4	G	303	-	4,4,4	0.42	0	6,6,6	0.28	0
4	SO4	A	303	-	4,4,4	0.44	0	6,6,6	0.21	0

In the following table, the Chirals column lists the number of chiral outliers, the number of chiral centers analysed, the number of these observed in the model and the number defined in the Chemical Component Dictionary. Similar counts are reported in the Torsion and Rings columns. '-' means no outliers of that kind were identified.

Mol	Type	Chain	Res	Link	Chirals	Torsions	Rings
2	AZM	E	301	3	-	0/2/10/10	0/1/1/1
2	AZM	A	301	3	-	0/2/10/10	0/1/1/1
2	AZM	G	301	3	-	0/2/10/10	0/1/1/1
2	AZM	C	301	3	-	0/2/10/10	0/1/1/1

All (19) bond length outliers are listed below:

Mol	Chain	Res	Type	Atoms	Z	Observed(Å)	Ideal(Å)
2	G	301	AZM	S1-N1	6.16	1.72	1.60
2	C	301	AZM	C3-N4	5.99	1.47	1.36
2	G	301	AZM	C3-N4	5.85	1.46	1.36
2	C	301	AZM	S1-N1	5.78	1.71	1.60
2	A	301	AZM	C3-N4	5.76	1.46	1.36
2	C	301	AZM	C2-N4	5.53	1.46	1.36
2	E	301	AZM	S1-N1	4.90	1.70	1.60
2	A	301	AZM	C2-N4	4.65	1.44	1.36
2	G	301	AZM	C2-N4	4.49	1.44	1.36
2	E	301	AZM	C2-N4	4.21	1.44	1.36
2	A	301	AZM	S1-N1	4.20	1.68	1.60
2	E	301	AZM	C3-N4	4.05	1.43	1.36
2	A	301	AZM	O1-S1	3.58	1.50	1.43
2	A	301	AZM	O2-S1	2.91	1.49	1.43
2	E	301	AZM	O1-S1	2.87	1.49	1.43
2	G	301	AZM	O1-S1	2.43	1.48	1.43
2	G	301	AZM	C4-C3	2.36	1.55	1.50

Continued on next page...

Continued from previous page...

Mol	Chain	Res	Type	Atoms	Z	Observed(Å)	Ideal(Å)
2	C	301	AZM	O1-S1	2.25	1.47	1.43
2	A	301	AZM	C4-C3	2.03	1.54	1.50

All (23) bond angle outliers are listed below:

Mol	Chain	Res	Type	Atoms	Z	Observed(°)	Ideal(°)
2	C	301	AZM	O2-S1-O1	-15.07	93.99	118.76
2	C	301	AZM	O1-S1-N1	13.06	126.72	107.36
2	E	301	AZM	O2-S1-O1	-13.01	97.38	118.76
2	A	301	AZM	O2-S1-O1	-12.98	97.43	118.76
2	C	301	AZM	O2-S1-C1	-11.50	95.08	108.59
2	G	301	AZM	O2-S1-O1	-9.78	102.69	118.76
2	G	301	AZM	O1-S1-N1	7.50	118.48	107.36
2	E	301	AZM	O1-S1-N1	6.53	117.05	107.36
2	A	301	AZM	O1-S1-N1	6.25	116.62	107.36
2	E	301	AZM	O2-S1-N1	6.05	116.34	107.36
2	G	301	AZM	C1-S1-N1	-5.87	97.43	108.25
2	G	301	AZM	O2-S1-N1	4.18	113.56	107.36
2	E	301	AZM	O1-S1-C1	4.16	113.48	108.59
2	G	301	AZM	O2-S1-C1	3.48	112.68	108.59
2	G	301	AZM	O1-S1-C1	3.32	112.49	108.59
2	A	301	AZM	O2-S1-N1	3.31	112.27	107.36
2	C	301	AZM	O1-S1-C1	2.95	112.06	108.59
2	G	301	AZM	C4-C3-N4	2.53	118.69	114.98
2	C	301	AZM	C1-S1-N1	2.43	112.72	108.25
2	E	301	AZM	C1-S1-N1	-2.40	103.82	108.25
2	C	301	AZM	C4-C3-N4	2.33	118.39	114.98
2	E	301	AZM	O3-C3-N4	-2.29	120.04	123.04
2	A	301	AZM	O1-S1-C1	2.13	111.10	108.59

There are no chirality outliers.

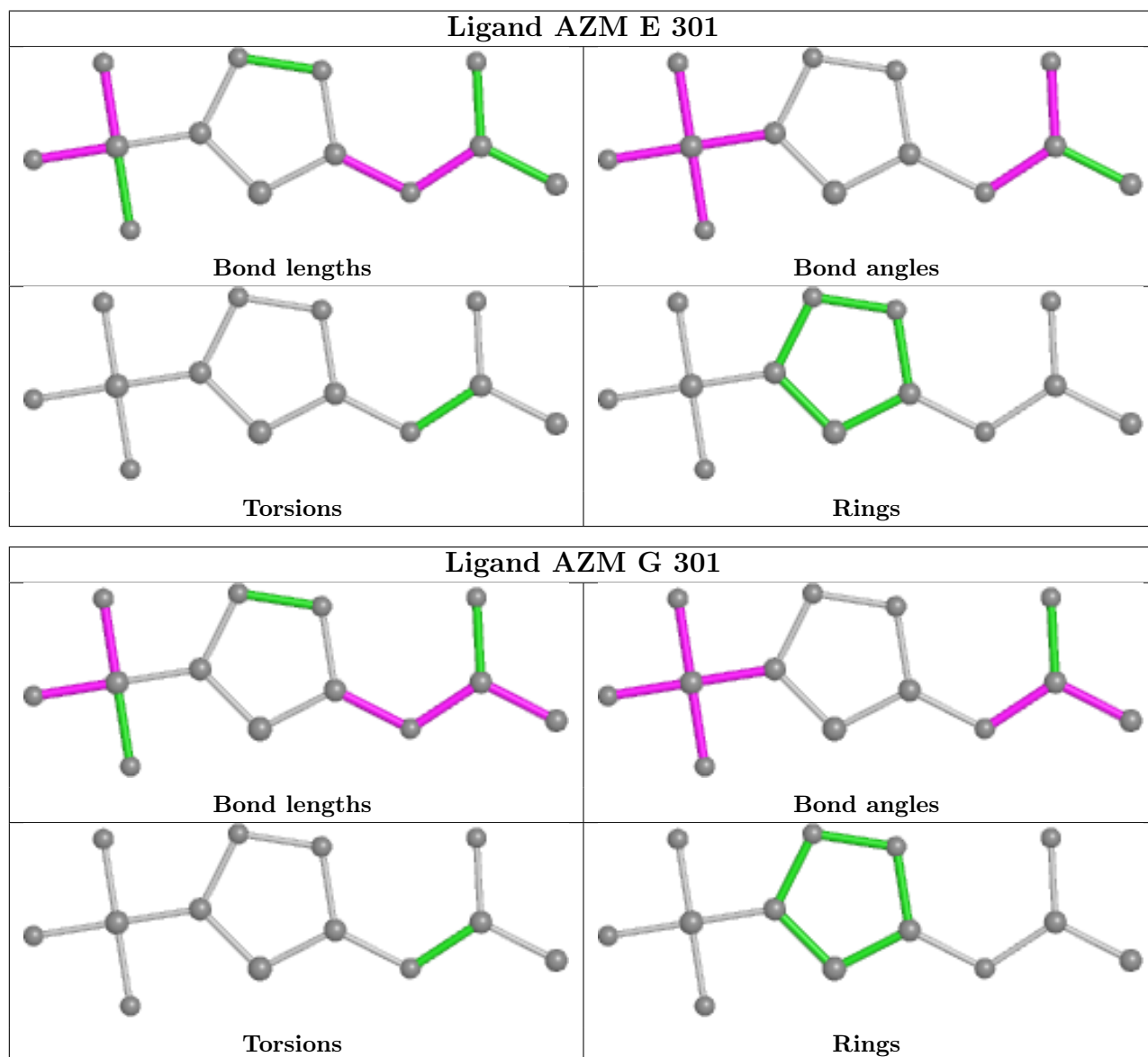
There are no torsion outliers.

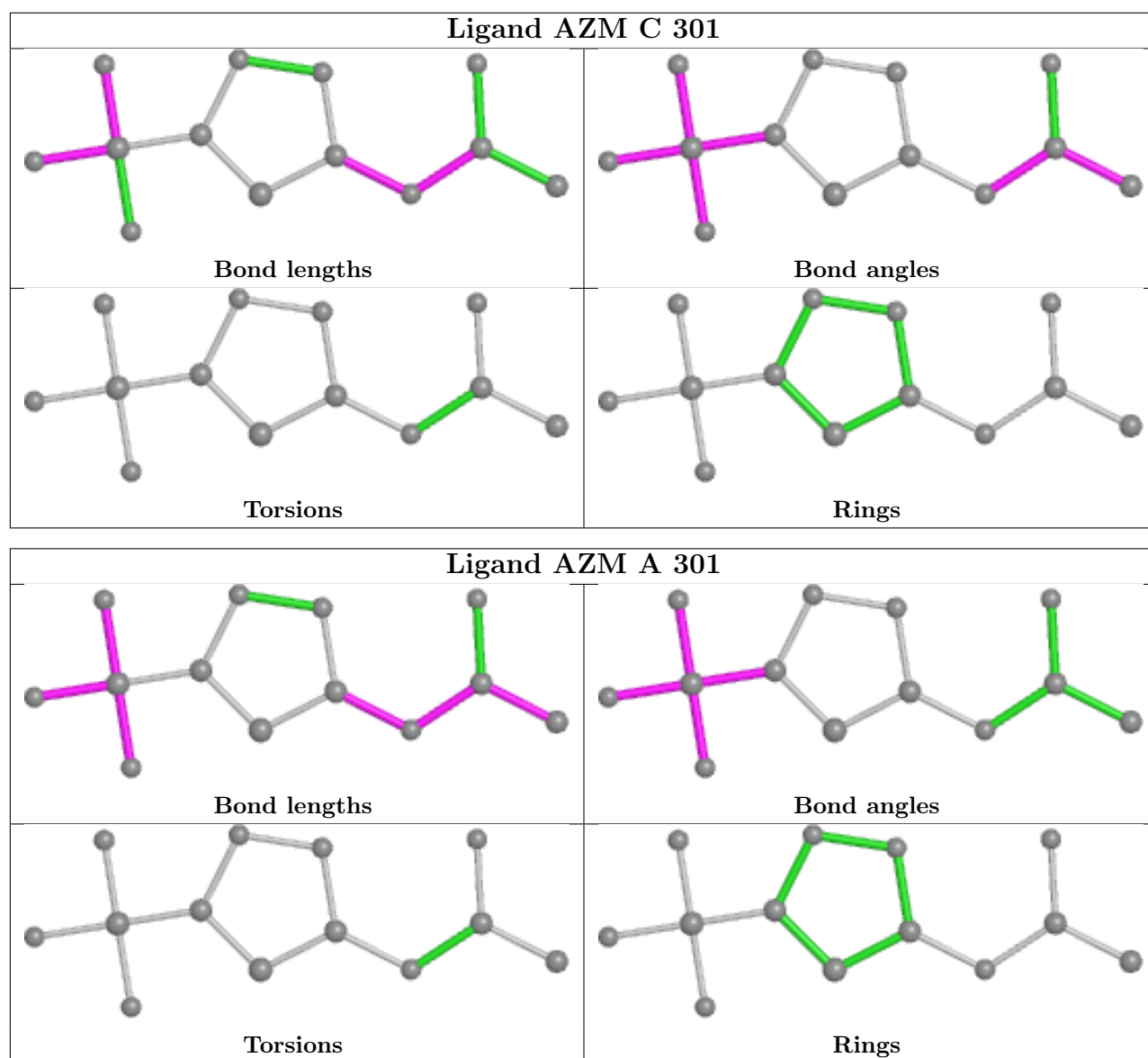
There are no ring outliers.

4 monomers are involved in 6 short contacts:

Mol	Chain	Res	Type	Clashes	Symm-Clashes
2	E	301	AZM	2	0
2	C	301	AZM	2	0
4	C	303	SO4	1	0
4	E	305	SO4	1	0

The following is a two-dimensional graphical depiction of Mogul quality analysis of bond lengths, bond angles, torsion angles, and ring geometry for all instances of the Ligand of Interest. In addition, ligands with molecular weight > 250 and outliers as shown on the validation Tables will also be included. For torsion angles, if less than 5% of the Mogul distribution of torsion angles is within 10 degrees of the torsion angle in question, then that torsion angle is considered an outlier. Any bond that is central to one or more torsion angles identified as an outlier by Mogul will be highlighted in the graph. For rings, the root-mean-square deviation (RMSD) between the ring in question and similar rings identified by Mogul is calculated over all ring torsion angles. If the average RMSD is greater than 60 degrees and the minimal RMSD between the ring in question and any Mogul-identified rings is also greater than 60 degrees, then that ring is considered an outlier. The outliers are highlighted in purple. The color gray indicates Mogul did not find sufficient equivalents in the CSD to analyse the geometry.





5.7 Other polymers [i](#)

There are no such residues in this entry.

5.8 Polymer linkage issues [i](#)

There are no chain breaks in this entry.

6 Fit of model and data [i](#)

6.1 Protein, DNA and RNA chains [i](#)

Unable to reproduce the depositors R factor - this section is therefore empty.

6.2 Non-standard residues in protein, DNA, RNA chains [i](#)

Unable to reproduce the depositors R factor - this section is therefore empty.

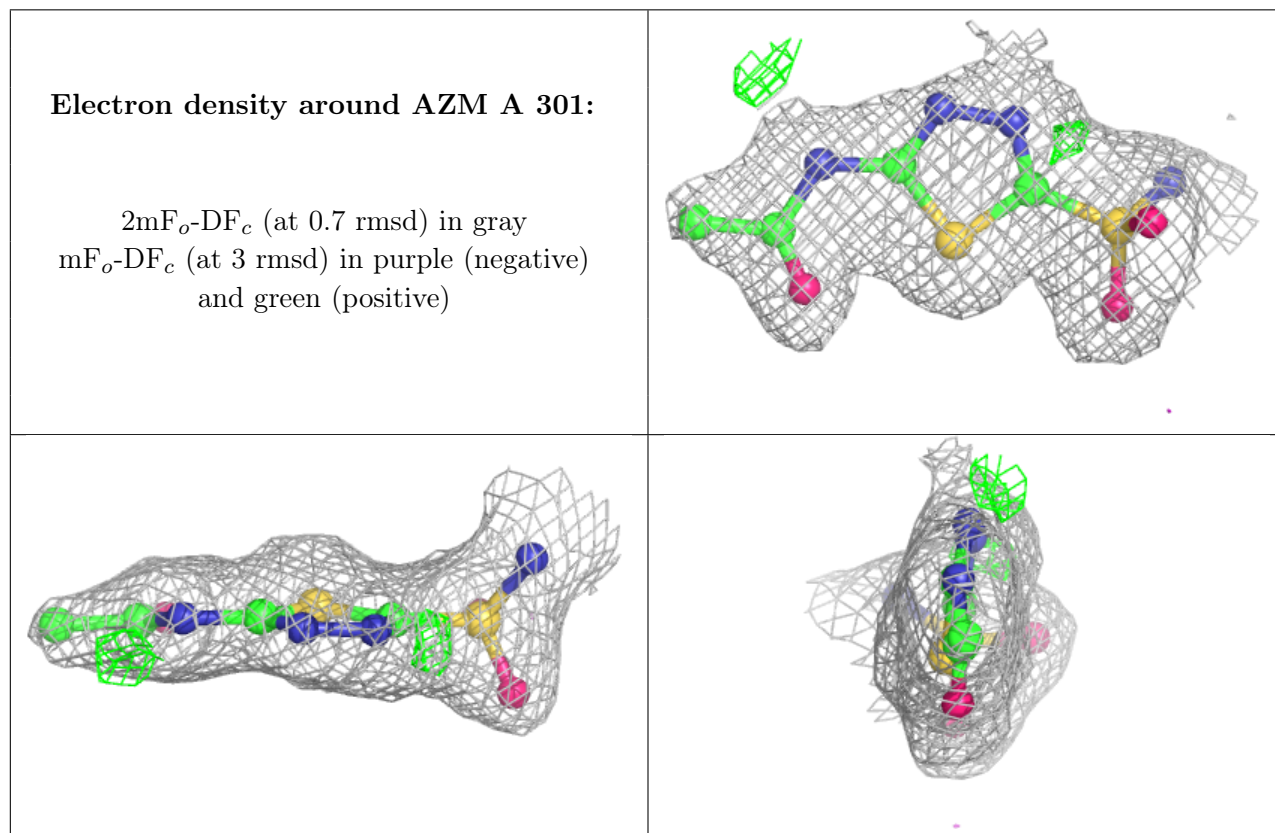
6.3 Carbohydrates [i](#)

Unable to reproduce the depositors R factor - this section is therefore empty.

6.4 Ligands [i](#)

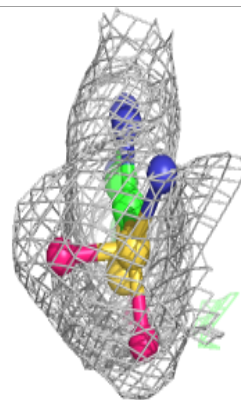
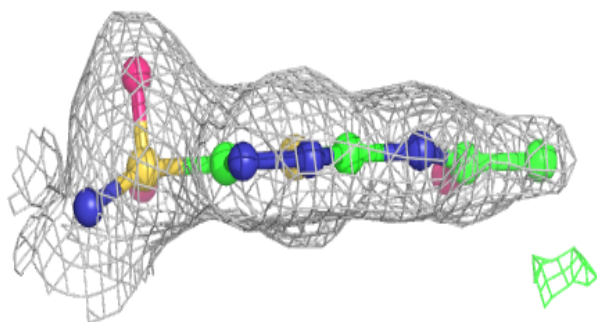
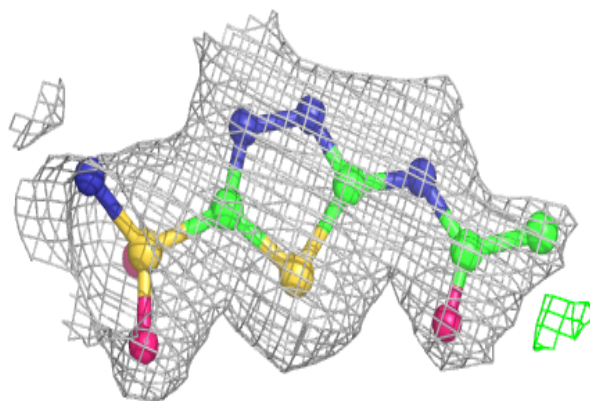
Unable to reproduce the depositors R factor - this section is therefore empty.

The following is a graphical depiction of the model fit to experimental electron density of all instances of the Ligand of Interest. In addition, ligands with molecular weight > 250 and outliers as shown on the geometry validation Tables will also be included. Each fit is shown from different orientation to approximate a three-dimensional view.

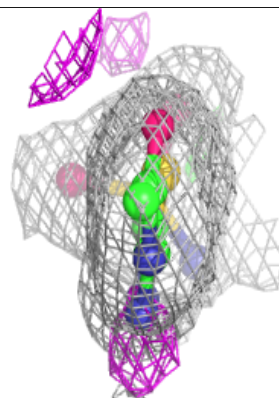
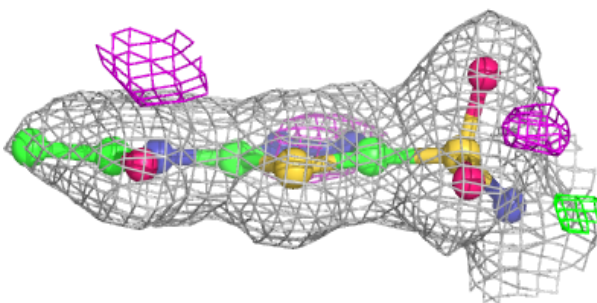
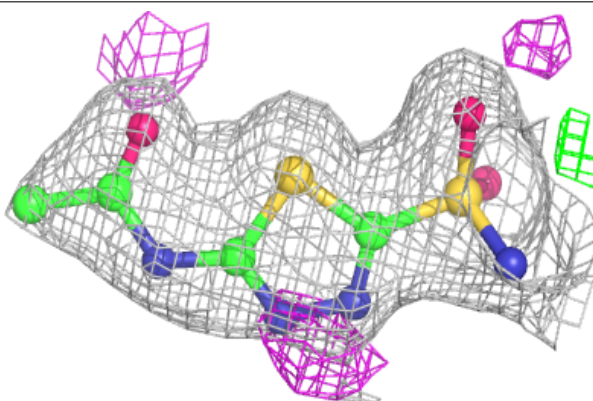


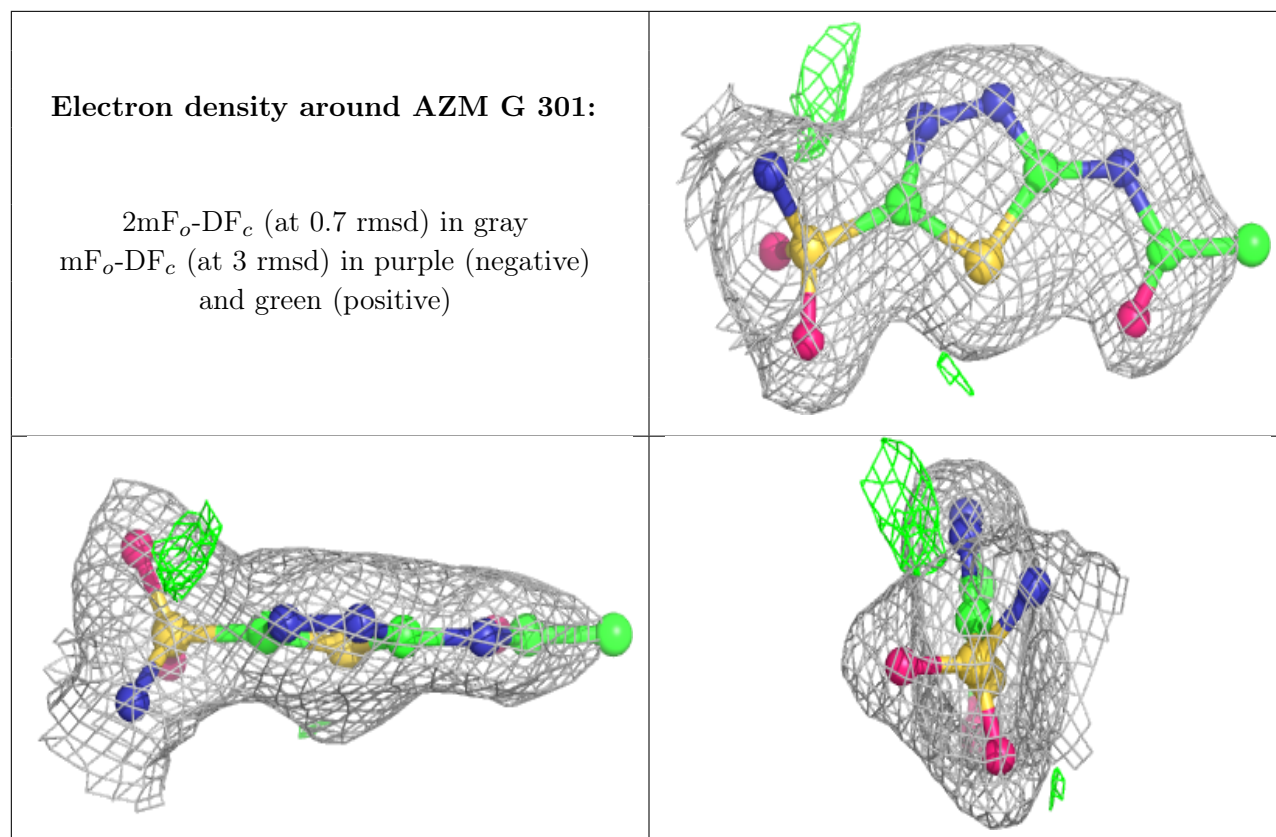
Electron density around AZM C 301:

$2mF_o-DF_c$ (at 0.7 rmsd) in gray
 mF_o-DF_c (at 3 rmsd) in purple (negative)
and green (positive)

**Electron density around AZM E 301:**

$2mF_o-DF_c$ (at 0.7 rmsd) in gray
 mF_o-DF_c (at 3 rmsd) in purple (negative)
and green (positive)





6.5 Other polymers [i](#)

Unable to reproduce the depositors R factor - this section is therefore empty.