



Full wwPDB EM Validation Report ⓘ

Oct 25, 2023 – 10:23 PM EDT

PDB ID : 8DN2
EMDB ID : EMD-27552
Title : Cryo-EM structure of human Glycine Receptor alpha1-beta heteromer,
glycine-bound state 2(expanded open)
Authors : Liu, X.; Wang, W.
Deposited on : 2022-07-10
Resolution : 3.90 Å(reported)
Based on initial model : 7MLY

This is a Full wwPDB EM Validation Report for a publicly released PDB entry.

We welcome your comments at validation@mail.wwpdb.org

A user guide is available at

<https://www.wwpdb.org/validation/2017/EMValidationReportHelp>

with specific help available everywhere you see the ⓘ symbol.

The types of validation reports are described at

<http://www.wwpdb.org/validation/2017/FAQs#types>.

The following versions of software and data (see [references ⓘ](#)) were used in the production of this report:

EMDB validation analysis : 0.0.1.dev70
Mogul : 1.8.5 (274361), CSD as541be (2020)
MolProbity : 4.02b-467
buster-report : 1.1.7 (2018)
Percentile statistics : 20191225.v01 (using entries in the PDB archive December 25th 2019)
MapQ : 1.9.9
Ideal geometry (proteins) : Engh & Huber (2001)
Ideal geometry (DNA, RNA) : Parkinson et al. (1996)
Validation Pipeline (wwPDB-VP) : 2.36

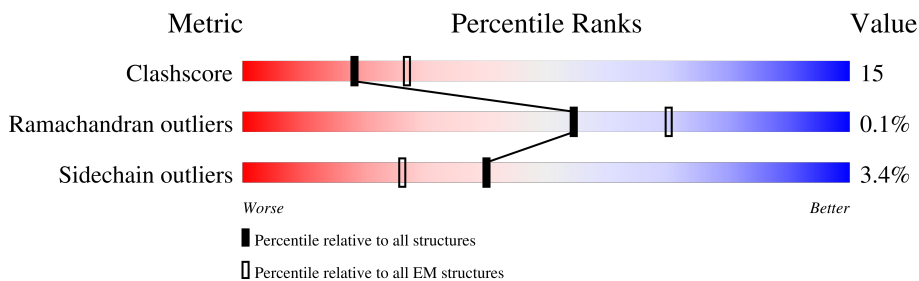
1 Overall quality at a glance i

The following experimental techniques were used to determine the structure:

ELECTRON MICROSCOPY

The reported resolution of this entry is 3.90 Å.

Percentile scores (ranging between 0-100) for global validation metrics of the entry are shown in the following graphic. The table shows the number of entries on which the scores are based.



Metric	Whole archive (#Entries)	EM structures (#Entries)
Clashscore	158937	4297
Ramachandran outliers	154571	4023
Sidechain outliers	154315	3826

The table below summarises the geometric issues observed across the polymeric chains and their fit to the map. The red, orange, yellow and green segments of the bar indicate the fraction of residues that contain outliers for ≥ 3 , 2, 1 and 0 types of geometric quality criteria respectively. A grey segment represents the fraction of residues that are not modelled. The numeric value for each fraction is indicated below the corresponding segment, with a dot representing fractions $\leq 5\%$. The upper red bar (where present) indicates the fraction of residues that have poor fit to the EM map (all-atom inclusion $< 40\%$). The numeric value is given above the bar.

Mol	Chain	Length	Quality of chain
1	A	367	
1	B	367	
1	C	367	
1	D	367	
2	E	680	

The following table lists non-polymeric compounds, carbohydrate monomers and non-standard residues in protein, DNA, RNA chains that are outliers for geometric or electron-density-fit criteria:

Mol	Type	Chain	Res	Chirality	Geometry	Clashes	Electron density
4	HEX	A	509	-	-	X	-
6	UND	A	504	-	-	X	-
6	UND	D	507	-	-	X	-
7	OCT	A	507	-	-	X	-
7	OCT	E	507	-	-	X	-
8	GLY	A	501	-	X	X	-
8	GLY	C	501	-	-	X	-

2 Entry composition [i](#)

There are 11 unique types of molecules in this entry. The entry contains 14676 atoms, of which 574 are hydrogens and 0 are deuteriums.

In the tables below, the AltConf column contains the number of residues with at least one atom in alternate conformation and the Trace column contains the number of residues modelled with at most 2 atoms.

- Molecule 1 is a protein called Glycine receptor subunit alpha-1.

Mol	Chain	Residues	Atoms					AltConf	Trace
			Total	C	N	O	S		
1	D	345	Total 2814	C 1827	N 464	O 501	S 22	0	0
1	A	341	Total 2778	C 1806	N 459	O 491	S 22	0	0
1	B	339	Total 2755	C 1794	N 451	O 488	S 22	0	0
1	C	336	Total 2726	C 1772	N 448	O 486	S 20	0	0

There are 260 discrepancies between the modelled and reference sequences:

Chain	Residue	Modelled	Actual	Comment	Reference
D	?	-	ARG	deletion	UNP P23415
D	?	-	PHE	deletion	UNP P23415
D	?	-	ARG	deletion	UNP P23415
D	?	-	ARG	deletion	UNP P23415
D	?	-	LYS	deletion	UNP P23415
D	?	-	ARG	deletion	UNP P23415
D	?	-	ARG	deletion	UNP P23415
D	?	-	HIS	deletion	UNP P23415
D	?	-	HIS	deletion	UNP P23415
D	?	-	LYS	deletion	UNP P23415
D	?	-	SER	deletion	UNP P23415
D	?	-	PRO	deletion	UNP P23415
D	?	-	MET	deletion	UNP P23415
D	?	-	LEU	deletion	UNP P23415
D	?	-	ASN	deletion	UNP P23415
D	?	-	LEU	deletion	UNP P23415
D	?	-	PHE	deletion	UNP P23415
D	?	-	GLN	deletion	UNP P23415
D	?	-	GLU	deletion	UNP P23415
D	?	-	ASP	deletion	UNP P23415
D	?	-	GLU	deletion	UNP P23415
D	?	-	ALA	deletion	UNP P23415

Continued on next page...

Continued from previous page...

Chain	Residue	Modelled	Actual	Comment	Reference
D	?	-	GLY	deletion	UNP P23415
D	?	-	GLU	deletion	UNP P23415
D	?	-	GLY	deletion	UNP P23415
D	?	-	ARG	deletion	UNP P23415
D	?	-	PHE	deletion	UNP P23415
D	?	-	ASN	deletion	UNP P23415
D	?	-	PHE	deletion	UNP P23415
D	?	-	SER	deletion	UNP P23415
D	?	-	ALA	deletion	UNP P23415
D	?	-	TYR	deletion	UNP P23415
D	?	-	GLY	deletion	UNP P23415
D	?	-	MET	deletion	UNP P23415
D	?	-	GLY	deletion	UNP P23415
D	?	-	PRO	deletion	UNP P23415
D	?	-	ALA	deletion	UNP P23415
D	?	-	CYS	deletion	UNP P23415
D	?	-	LEU	deletion	UNP P23415
D	?	-	GLN	deletion	UNP P23415
D	?	-	ALA	deletion	UNP P23415
D	?	-	LYS	deletion	UNP P23415
D	?	-	ASP	deletion	UNP P23415
D	?	-	GLY	deletion	UNP P23415
D	?	-	ILE	deletion	UNP P23415
D	?	-	SER	deletion	UNP P23415
D	?	-	VAL	deletion	UNP P23415
D	?	-	LYS	deletion	UNP P23415
D	?	-	GLY	deletion	UNP P23415
D	?	-	ALA	deletion	UNP P23415
D	?	-	ASN	deletion	UNP P23415
D	?	-	ASN	deletion	UNP P23415
D	?	-	SER	deletion	UNP P23415
D	?	-	ASN	deletion	UNP P23415
D	?	-	THR	deletion	UNP P23415
D	?	-	THR	deletion	UNP P23415
D	?	-	ASN	deletion	UNP P23415
D	?	-	PRO	deletion	UNP P23415
D	?	-	PRO	deletion	UNP P23415
D	?	-	PRO	deletion	UNP P23415
D	?	-	ALA	deletion	UNP P23415
D	?	-	PRO	deletion	UNP P23415
D	377	GLY	SER	conflict	UNP P23415
D	378	SER	LYS	conflict	UNP P23415

Continued on next page...

Continued from previous page...

Chain	Residue	Modelled	Actual	Comment	Reference
D	380	GLY	PRO	conflict	UNP P23415
A	?	-	ARG	deletion	UNP P23415
A	?	-	PHE	deletion	UNP P23415
A	?	-	ARG	deletion	UNP P23415
A	?	-	ARG	deletion	UNP P23415
A	?	-	LYS	deletion	UNP P23415
A	?	-	ARG	deletion	UNP P23415
A	?	-	ARG	deletion	UNP P23415
A	?	-	HIS	deletion	UNP P23415
A	?	-	HIS	deletion	UNP P23415
A	?	-	LYS	deletion	UNP P23415
A	?	-	SER	deletion	UNP P23415
A	?	-	PRO	deletion	UNP P23415
A	?	-	MET	deletion	UNP P23415
A	?	-	LEU	deletion	UNP P23415
A	?	-	ASN	deletion	UNP P23415
A	?	-	LEU	deletion	UNP P23415
A	?	-	PHE	deletion	UNP P23415
A	?	-	GLN	deletion	UNP P23415
A	?	-	GLU	deletion	UNP P23415
A	?	-	ASP	deletion	UNP P23415
A	?	-	GLU	deletion	UNP P23415
A	?	-	ALA	deletion	UNP P23415
A	?	-	GLY	deletion	UNP P23415
A	?	-	GLU	deletion	UNP P23415
A	?	-	GLY	deletion	UNP P23415
A	?	-	ARG	deletion	UNP P23415
A	?	-	PHE	deletion	UNP P23415
A	?	-	ASN	deletion	UNP P23415
A	?	-	PHE	deletion	UNP P23415
A	?	-	SER	deletion	UNP P23415
A	?	-	ALA	deletion	UNP P23415
A	?	-	TYR	deletion	UNP P23415
A	?	-	GLY	deletion	UNP P23415
A	?	-	MET	deletion	UNP P23415
A	?	-	GLY	deletion	UNP P23415
A	?	-	PRO	deletion	UNP P23415
A	?	-	ALA	deletion	UNP P23415
A	?	-	CYS	deletion	UNP P23415
A	?	-	LEU	deletion	UNP P23415
A	?	-	GLN	deletion	UNP P23415
A	?	-	ALA	deletion	UNP P23415

Continued on next page...

Continued from previous page...

Chain	Residue	Modelled	Actual	Comment	Reference
A	?	-	LYS	deletion	UNP P23415
A	?	-	ASP	deletion	UNP P23415
A	?	-	GLY	deletion	UNP P23415
A	?	-	ILE	deletion	UNP P23415
A	?	-	SER	deletion	UNP P23415
A	?	-	VAL	deletion	UNP P23415
A	?	-	LYS	deletion	UNP P23415
A	?	-	GLY	deletion	UNP P23415
A	?	-	ALA	deletion	UNP P23415
A	?	-	ASN	deletion	UNP P23415
A	?	-	ASN	deletion	UNP P23415
A	?	-	SER	deletion	UNP P23415
A	?	-	ASN	deletion	UNP P23415
A	?	-	THR	deletion	UNP P23415
A	?	-	THR	deletion	UNP P23415
A	?	-	ASN	deletion	UNP P23415
A	?	-	PRO	deletion	UNP P23415
A	?	-	PRO	deletion	UNP P23415
A	?	-	PRO	deletion	UNP P23415
A	?	-	ALA	deletion	UNP P23415
A	?	-	PRO	deletion	UNP P23415
A	377	GLY	SER	conflict	UNP P23415
A	378	SER	LYS	conflict	UNP P23415
A	380	GLY	PRO	conflict	UNP P23415
B	?	-	ARG	deletion	UNP P23415
B	?	-	PHE	deletion	UNP P23415
B	?	-	ARG	deletion	UNP P23415
B	?	-	ARG	deletion	UNP P23415
B	?	-	LYS	deletion	UNP P23415
B	?	-	ARG	deletion	UNP P23415
B	?	-	ARG	deletion	UNP P23415
B	?	-	HIS	deletion	UNP P23415
B	?	-	HIS	deletion	UNP P23415
B	?	-	LYS	deletion	UNP P23415
B	?	-	SER	deletion	UNP P23415
B	?	-	PRO	deletion	UNP P23415
B	?	-	MET	deletion	UNP P23415
B	?	-	LEU	deletion	UNP P23415
B	?	-	ASN	deletion	UNP P23415
B	?	-	LEU	deletion	UNP P23415
B	?	-	PHE	deletion	UNP P23415
B	?	-	GLN	deletion	UNP P23415

Continued on next page...

Continued from previous page...

Chain	Residue	Modelled	Actual	Comment	Reference
B	?	-	GLU	deletion	UNP P23415
B	?	-	ASP	deletion	UNP P23415
B	?	-	GLU	deletion	UNP P23415
B	?	-	ALA	deletion	UNP P23415
B	?	-	GLY	deletion	UNP P23415
B	?	-	GLU	deletion	UNP P23415
B	?	-	GLY	deletion	UNP P23415
B	?	-	ARG	deletion	UNP P23415
B	?	-	PHE	deletion	UNP P23415
B	?	-	ASN	deletion	UNP P23415
B	?	-	PHE	deletion	UNP P23415
B	?	-	SER	deletion	UNP P23415
B	?	-	ALA	deletion	UNP P23415
B	?	-	TYR	deletion	UNP P23415
B	?	-	GLY	deletion	UNP P23415
B	?	-	MET	deletion	UNP P23415
B	?	-	GLY	deletion	UNP P23415
B	?	-	PRO	deletion	UNP P23415
B	?	-	ALA	deletion	UNP P23415
B	?	-	CYS	deletion	UNP P23415
B	?	-	LEU	deletion	UNP P23415
B	?	-	GLN	deletion	UNP P23415
B	?	-	ALA	deletion	UNP P23415
B	?	-	LYS	deletion	UNP P23415
B	?	-	ASP	deletion	UNP P23415
B	?	-	GLY	deletion	UNP P23415
B	?	-	ILE	deletion	UNP P23415
B	?	-	SER	deletion	UNP P23415
B	?	-	VAL	deletion	UNP P23415
B	?	-	LYS	deletion	UNP P23415
B	?	-	GLY	deletion	UNP P23415
B	?	-	ALA	deletion	UNP P23415
B	?	-	ASN	deletion	UNP P23415
B	?	-	ASN	deletion	UNP P23415
B	?	-	SER	deletion	UNP P23415
B	?	-	ASN	deletion	UNP P23415
B	?	-	THR	deletion	UNP P23415
B	?	-	THR	deletion	UNP P23415
B	?	-	ASN	deletion	UNP P23415
B	?	-	PRO	deletion	UNP P23415
B	?	-	PRO	deletion	UNP P23415
B	?	-	PRO	deletion	UNP P23415

Continued on next page...

Continued from previous page...

Chain	Residue	Modelled	Actual	Comment	Reference
B	?	-	ALA	deletion	UNP P23415
B	?	-	PRO	deletion	UNP P23415
B	377	GLY	SER	conflict	UNP P23415
B	378	SER	LYS	conflict	UNP P23415
B	380	GLY	PRO	conflict	UNP P23415
C	?	-	ARG	deletion	UNP P23415
C	?	-	PHE	deletion	UNP P23415
C	?	-	ARG	deletion	UNP P23415
C	?	-	ARG	deletion	UNP P23415
C	?	-	LYS	deletion	UNP P23415
C	?	-	ARG	deletion	UNP P23415
C	?	-	ARG	deletion	UNP P23415
C	?	-	HIS	deletion	UNP P23415
C	?	-	HIS	deletion	UNP P23415
C	?	-	LYS	deletion	UNP P23415
C	?	-	SER	deletion	UNP P23415
C	?	-	PRO	deletion	UNP P23415
C	?	-	MET	deletion	UNP P23415
C	?	-	LEU	deletion	UNP P23415
C	?	-	ASN	deletion	UNP P23415
C	?	-	LEU	deletion	UNP P23415
C	?	-	PHE	deletion	UNP P23415
C	?	-	GLN	deletion	UNP P23415
C	?	-	GLU	deletion	UNP P23415
C	?	-	ASP	deletion	UNP P23415
C	?	-	GLU	deletion	UNP P23415
C	?	-	ALA	deletion	UNP P23415
C	?	-	GLY	deletion	UNP P23415
C	?	-	GLU	deletion	UNP P23415
C	?	-	GLY	deletion	UNP P23415
C	?	-	ARG	deletion	UNP P23415
C	?	-	PHE	deletion	UNP P23415
C	?	-	ASN	deletion	UNP P23415
C	?	-	PHE	deletion	UNP P23415
C	?	-	SER	deletion	UNP P23415
C	?	-	ALA	deletion	UNP P23415
C	?	-	TYR	deletion	UNP P23415
C	?	-	GLY	deletion	UNP P23415
C	?	-	MET	deletion	UNP P23415
C	?	-	GLY	deletion	UNP P23415
C	?	-	PRO	deletion	UNP P23415
C	?	-	ALA	deletion	UNP P23415

Continued on next page...

Continued from previous page...

Chain	Residue	Modelled	Actual	Comment	Reference
C	?	-	CYS	deletion	UNP P23415
C	?	-	LEU	deletion	UNP P23415
C	?	-	GLN	deletion	UNP P23415
C	?	-	ALA	deletion	UNP P23415
C	?	-	LYS	deletion	UNP P23415
C	?	-	ASP	deletion	UNP P23415
C	?	-	GLY	deletion	UNP P23415
C	?	-	ILE	deletion	UNP P23415
C	?	-	SER	deletion	UNP P23415
C	?	-	VAL	deletion	UNP P23415
C	?	-	LYS	deletion	UNP P23415
C	?	-	GLY	deletion	UNP P23415
C	?	-	ALA	deletion	UNP P23415
C	?	-	ASN	deletion	UNP P23415
C	?	-	ASN	deletion	UNP P23415
C	?	-	SER	deletion	UNP P23415
C	?	-	ASN	deletion	UNP P23415
C	?	-	THR	deletion	UNP P23415
C	?	-	THR	deletion	UNP P23415
C	?	-	ASN	deletion	UNP P23415
C	?	-	PRO	deletion	UNP P23415
C	?	-	PRO	deletion	UNP P23415
C	?	-	PRO	deletion	UNP P23415
C	?	-	ALA	deletion	UNP P23415
C	?	-	PRO	deletion	UNP P23415
C	377	GLY	SER	conflict	UNP P23415
C	378	SER	LYS	conflict	UNP P23415
C	380	GLY	PRO	conflict	UNP P23415

- Molecule 2 is a protein called Glycine receptor subunit beta, Green fluorescent protein, Glycine receptor beta.

Mol	Chain	Residues	Atoms					AltConf	Trace
			Total	C	N	O	S		
2	E	332	2692	1770	428	478	16	0	0

There are 13 discrepancies between the modelled and reference sequences:

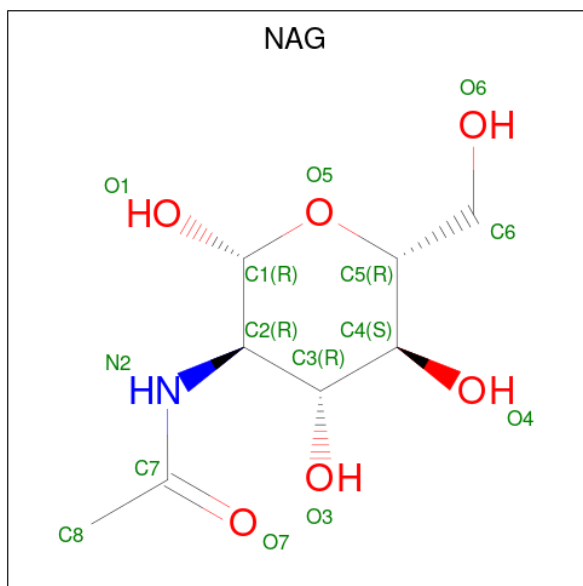
Chain	Residue	Modelled	Actual	Comment	Reference
E	333A	GLY	-	linker	UNP P48167
E	333B	GLY	-	linker	UNP P48167
E	333C	SER	-	linker	UNP P48167

Continued on next page...

Continued from previous page...

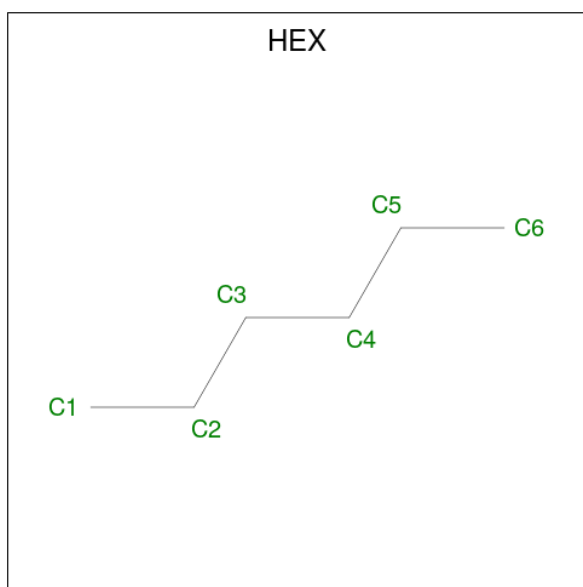
Chain	Residue	Modelled	Actual	Comment	Reference
E	333D	SER	-	linker	UNP P48167
E	333E	ALA	-	linker	UNP P48167
E	333F	ALA	-	linker	UNP P48167
E	333G	ALA	-	linker	UNP P48167
E	333H	VAL	MET	conflict	UNP P42212
E	342L	SER	-	linker	UNP P42212
E	342M	GLY	-	linker	UNP P42212
E	342O	GLY	THR	conflict	UNP A0A2K6CAQ3
E	342P	SER	LEU	conflict	UNP A0A2K6CAQ3
E	342Q	GLY	GLN	conflict	UNP A0A2K6CAQ3

- Molecule 3 is 2-acetamido-2-deoxy-beta-D-glucopyranose (three-letter code: NAG) (formula: $C_8H_{15}NO_6$) (labeled as "Ligand of Interest" by depositor).



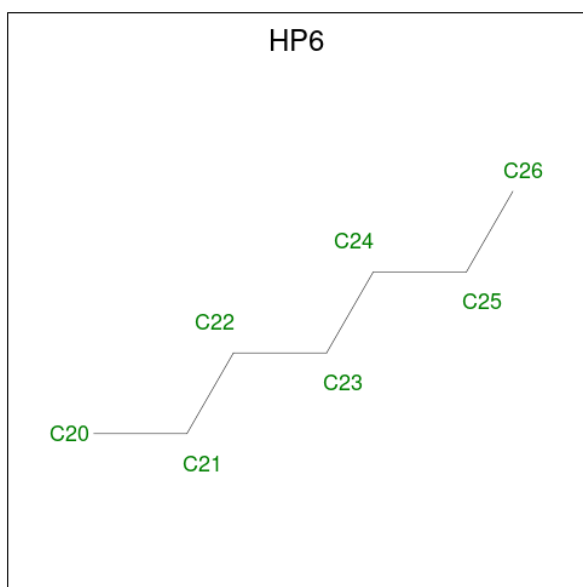
Mol	Chain	Residues	Atoms				AltConf
			Total	C	N	O	
3	D	1	Total	C	N	O	0
			14	8	1	5	
3	A	1	Total	C	N	O	0
			14	8	1	5	
3	B	1	Total	C	N	O	0
			14	8	1	5	
3	C	1	Total	C	N	O	0
			14	8	1	5	
3	E	1	Total	C	N	O	0
			14	8	1	5	

- Molecule 4 is HEXANE (three-letter code: HEX) (formula: C_6H_{14}).



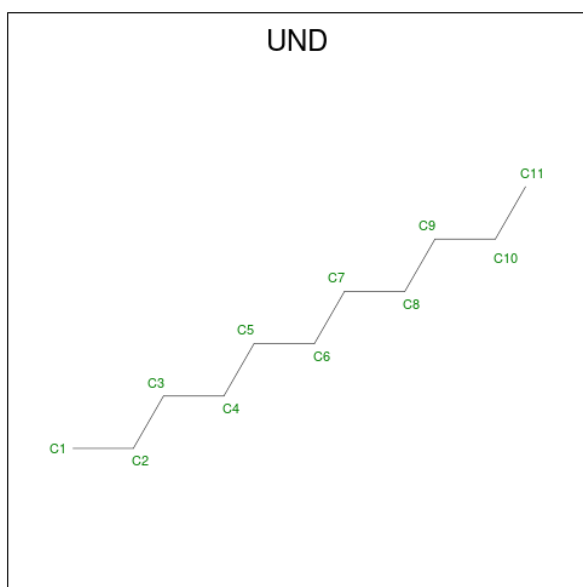
Mol	Chain	Residues	Atoms			AltConf
4	D	1	Total	C	H	0
			20	6	14	
4	D	1	Total	C	H	0
			20	6	14	
4	D	1	Total	C	H	0
			20	6	14	
4	A	1	Total	C	H	0
			20	6	14	
4	A	1	Total	C	H	0
			20	6	14	
4	A	1	Total	C	H	0
			20	6	14	
4	B	1	Total	C	H	0
			20	6	14	
4	B	1	Total	C	H	0
			20	6	14	
4	C	1	Total	C	H	0
			20	6	14	
4	E	1	Total	C	H	0
			20	6	14	

- Molecule 5 is HEPTANE (three-letter code: HP6) (formula: C₇H₁₆).



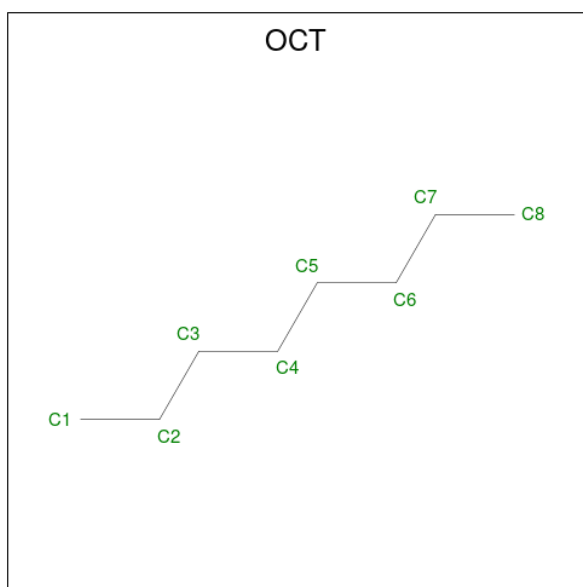
Mol	Chain	Residues	Atoms			AltConf
5	D	1	Total	C	H	0
			23	7	16	
5	D	1	Total	C	H	0
			23	7	16	
5	D	1	Total	C	H	0
			23	7	16	
5	D	1	Total	C	H	0
			23	7	16	
5	B	1	Total	C	H	0
			23	7	16	
5	C	1	Total	C	H	0
			23	7	16	
5	C	1	Total	C	H	0
			23	7	16	
5	E	1	Total	C	H	0
			23	7	16	
5	E	1	Total	C	H	0
			23	7	16	

- Molecule 6 is UNDECANE (three-letter code: UND) (formula: $C_{11}H_{24}$).



Mol	Chain	Residues	Atoms			AltConf
6	D	1	Total	C	H	0
			35	11	24	
6	A	1	Total	C	H	0
			35	11	24	
6	B	1	Total	C	H	0
			35	11	24	

- Molecule 7 is N-OCTANE (three-letter code: OCT) (formula: C₈H₁₈).



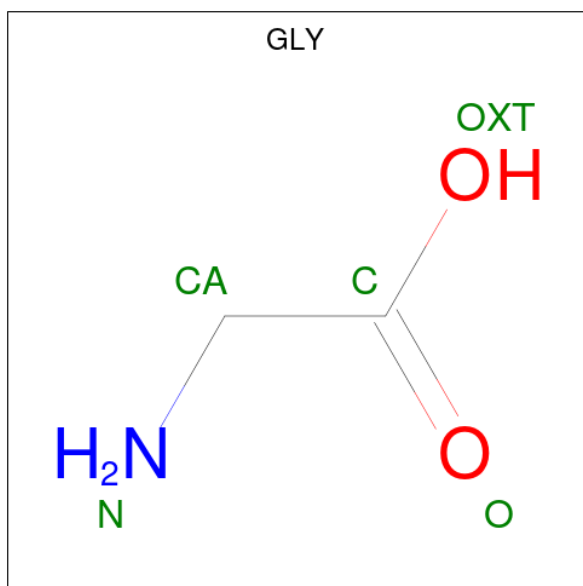
Mol	Chain	Residues	Atoms			AltConf
7	D	1	Total	C	H	0
			26	8	18	

Continued on next page...

Continued from previous page...

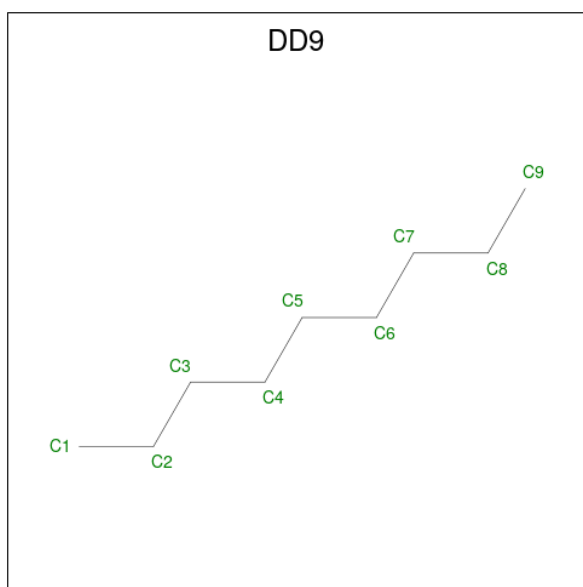
Mol	Chain	Residues	Atoms			AltConf
7	A	1	Total	C	H	0
			26	8	18	
7	A	1	Total	C	H	0
			26	8	18	
7	C	1	Total	C	H	0
			26	8	18	
7	C	1	Total	C	H	0
			26	8	18	
7	E	1	Total	C	H	0
			26	8	18	
7	E	1	Total	C	H	0
			26	8	18	

- Molecule 8 is GLYCINE (three-letter code: GLY) (formula: $C_2H_5NO_2$).



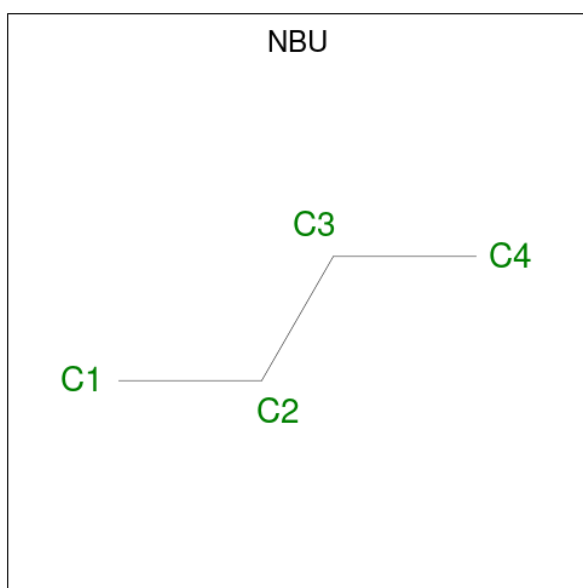
Mol	Chain	Residues	Atoms				AltConf
8	A	1	Total	C	N	O	0
			5	2	1	2	
8	B	1	Total	C	N	O	0
			5	2	1	2	
8	C	1	Total	C	N	O	0
			5	2	1	2	

- Molecule 9 is nonane (three-letter code: DD9) (formula: C_9H_{20}).



Mol	Chain	Residues	Atoms			AltConf
9	A	1	Total	C	H	0
			29	9	20	
9	E	1	Total	C	H	0
			29	9	20	

- Molecule 10 is N-BUTANE (three-letter code: NBU) (formula: C_4H_{10}).



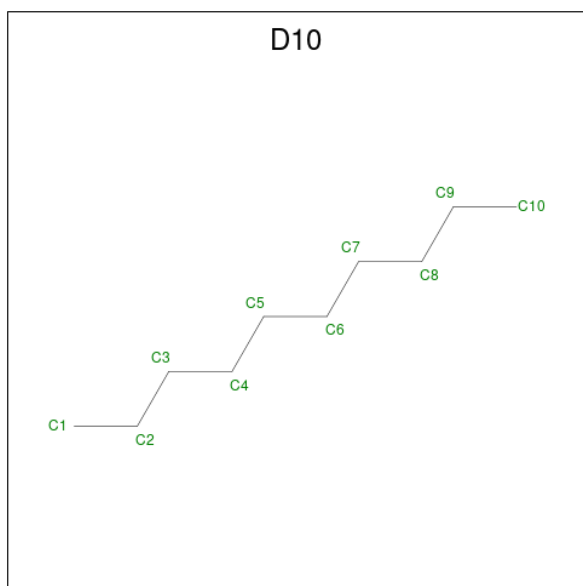
Mol	Chain	Residues	Atoms			AltConf
10	A	1	Total	C	H	0
			14	4	10	
10	C	1	Total	C	H	0
			14	4	10	

Continued on next page...

Continued from previous page...

Mol	Chain	Residues	Atoms			AltConf
			Total	C	H	
10	C	1	14	4	10	0

- Molecule 11 is DECANE (three-letter code: D10) (formula: $C_{10}H_{22}$).

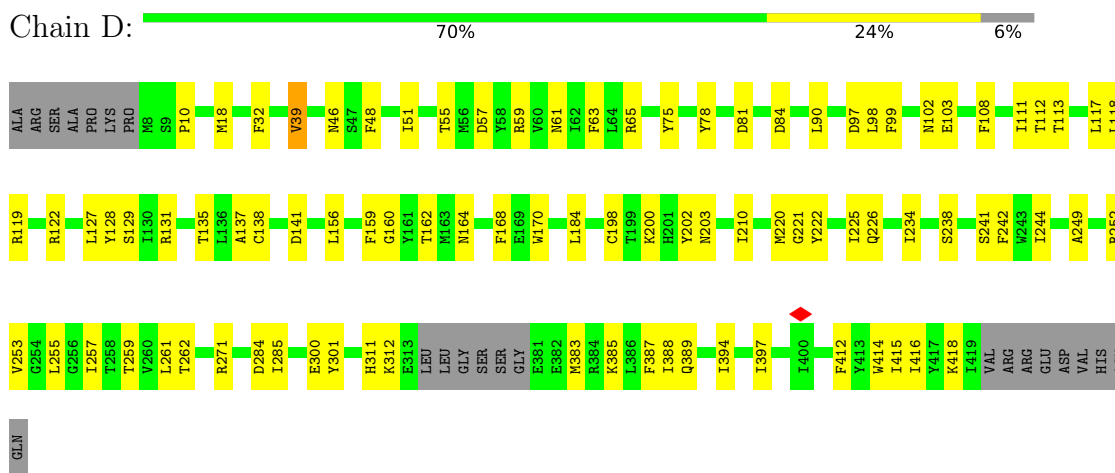


Mol	Chain	Residues	Atoms			AltConf
			Total	C	H	
11	E	1	32	10	22	0

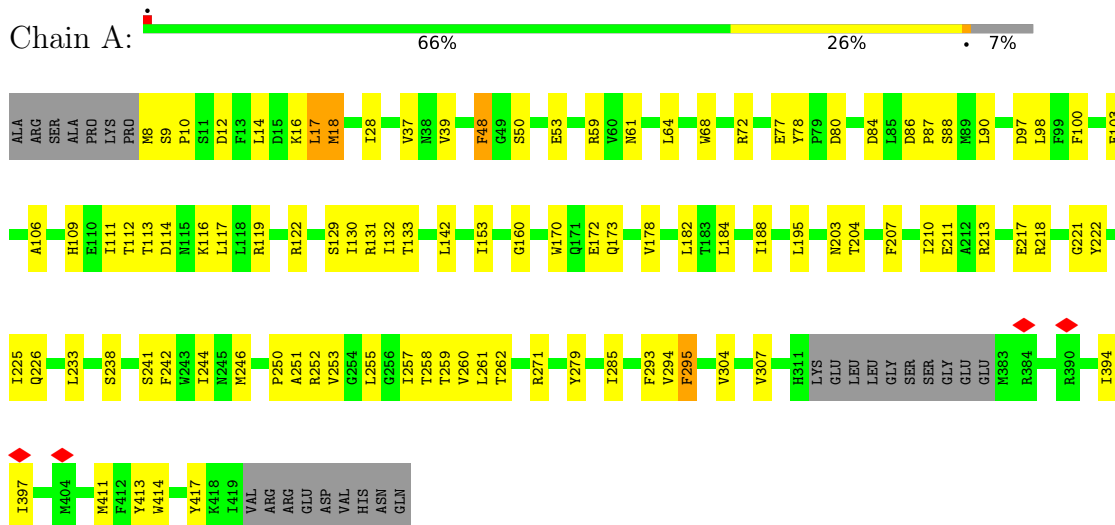
3 Residue-property plots [i](#)

These plots are drawn for all protein, RNA, DNA and oligosaccharide chains in the entry. The first graphic for a chain summarises the proportions of the various outlier classes displayed in the second graphic. The second graphic shows the sequence view annotated by issues in geometry and atom inclusion in map density. Residues are color-coded according to the number of geometric quality criteria for which they contain at least one outlier: green = 0, yellow = 1, orange = 2 and red = 3 or more. A red diamond above a residue indicates a poor fit to the EM map for this residue (all-atom inclusion < 40%). Stretches of 2 or more consecutive residues without any outlier are shown as a green connector. Residues present in the sample, but not in the model, are shown in grey.

- Molecule 1: Glycine receptor subunit alpha-1

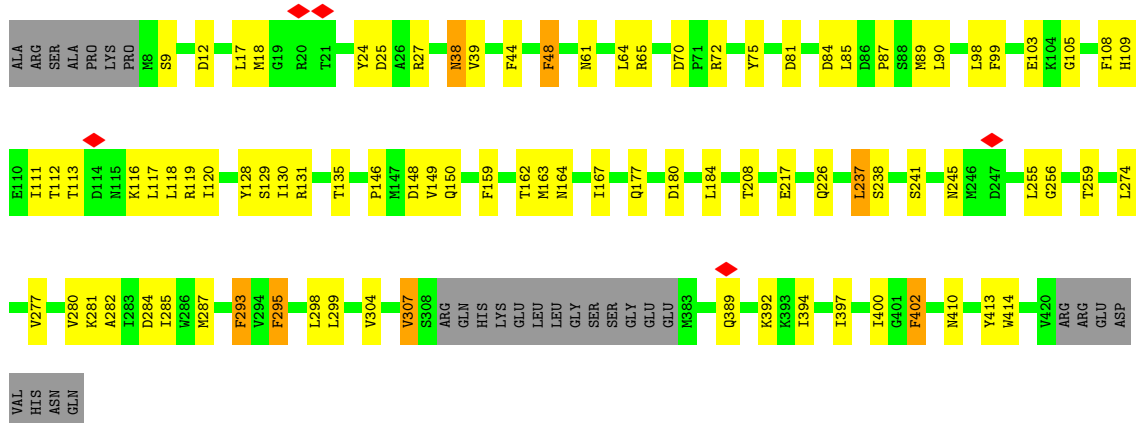


- Molecule 1: Glycine receptor subunit alpha-1

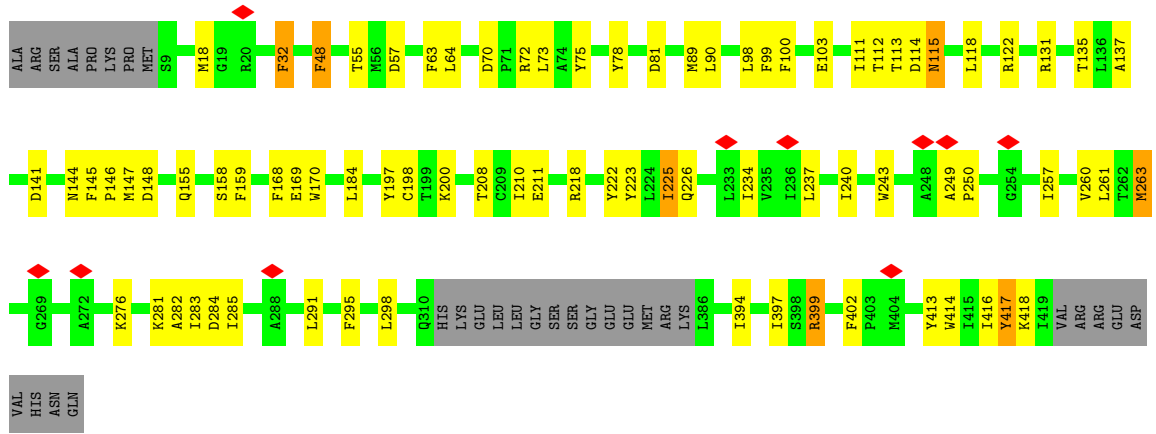


- Molecule 1: Glycine receptor subunit alpha-1

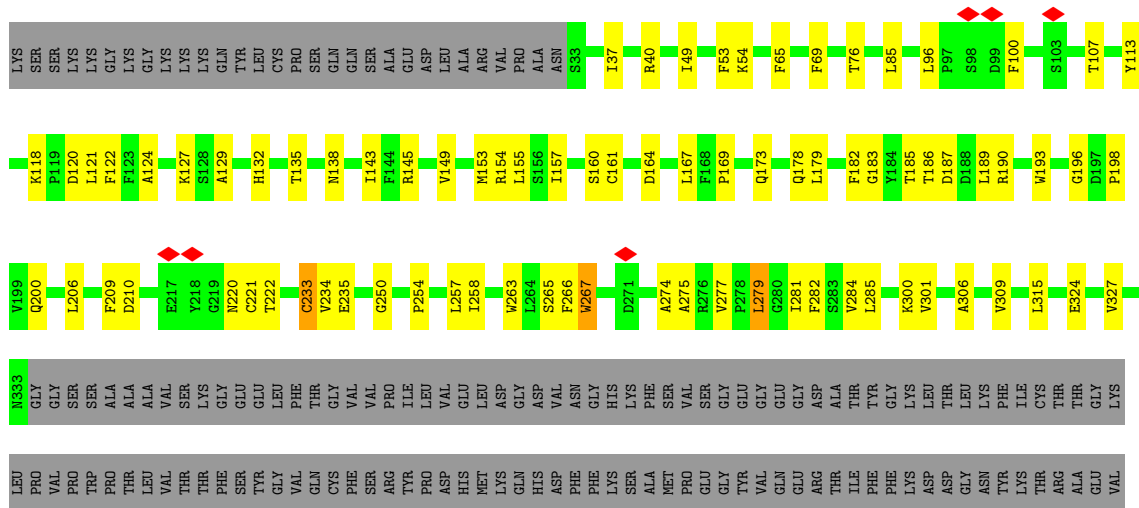
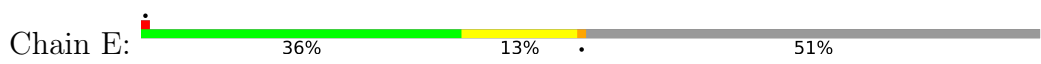




• Molecule 1: Glycine receptor subunit alpha-1



• Molecule 2: Glycine receptor subunit beta, Green fluorescent protein, Glycine receptor beta



4 Experimental information

Property	Value	Source
EM reconstruction method	SINGLE PARTICLE	Depositor
Imposed symmetry	POINT, C1	Depositor
Number of particles used	24487	Depositor
Resolution determination method	FSC 0.143 CUT-OFF	Depositor
CTF correction method	PHASE FLIPPING AND AMPLITUDE CORRECTION	Depositor
Microscope	FEI TITAN KRIOS	Depositor
Voltage (kV)	300	Depositor
Electron dose ($e^-/\text{\AA}^2$)	69.6	Depositor
Minimum defocus (nm)	1000	Depositor
Maximum defocus (nm)	2500	Depositor
Magnification	Not provided	
Image detector	GATAN K3 (6k x 4k)	Depositor
Maximum map value	1.952	Depositor
Minimum map value	-1.219	Depositor
Average map value	0.010	Depositor
Map value standard deviation	0.076	Depositor
Recommended contour level	0.25	Depositor
Map size (\AA)	239.04, 239.04, 239.04	wwPDB
Map dimensions	288, 288, 288	wwPDB
Map angles ($^\circ$)	90.0, 90.0, 90.0	wwPDB
Pixel spacing (\AA)	0.83, 0.83, 0.83	Depositor

5 Model quality [i](#)

5.1 Standard geometry [i](#)

Bond lengths and bond angles in the following residue types are not validated in this section: NAG, NBU, HEX, DD9, UND, OCT, D10, HP6

The Z score for a bond length (or angle) is the number of standard deviations the observed value is removed from the expected value. A bond length (or angle) with $|Z| > 5$ is considered an outlier worth inspection. RMSZ is the root-mean-square of all Z scores of the bond lengths (or angles).

Mol	Chain	Bond lengths		Bond angles	
		RMSZ	# Z >5	RMSZ	# Z >5
1	A	0.27	0/2848	0.50	0/3856
1	B	0.27	0/2824	0.48	0/3825
1	C	0.26	0/2794	0.48	0/3787
1	D	0.27	0/2884	0.50	0/3903
2	E	0.26	0/2763	0.48	0/3758
All	All	0.26	0/14113	0.49	0/19129

There are no bond length outliers.

There are no bond angle outliers.

There are no chirality outliers.

There are no planarity outliers.

5.2 Too-close contacts [i](#)

In the following table, the Non-H and H(model) columns list the number of non-hydrogen atoms and hydrogen atoms in the chain respectively. The H(added) column lists the number of hydrogen atoms added and optimized by MolProbity. The Clashes column lists the number of clashes within the asymmetric unit, whereas Symm-Clashes lists symmetry-related clashes.

Mol	Chain	Non-H	H(model)	H(added)	Clashes	Symm-Clashes
1	A	2778	0	2777	132	0
1	B	2755	0	2758	84	0
1	C	2726	0	2719	75	0
1	D	2814	0	2808	91	0
2	E	2692	0	2701	74	0
3	A	14	0	13	0	0
3	B	14	0	13	0	0
3	C	14	0	13	0	0

Continued on next page...

Continued from previous page...

Mol	Chain	Non-H	H(model)	H(added)	Clashes	Symm-Clashes
3	D	14	0	13	1	0
3	E	14	0	13	0	0
4	A	18	42	40	12	0
4	B	12	28	28	2	0
4	C	6	14	14	0	0
4	D	18	42	42	3	0
4	E	6	14	14	1	0
5	B	7	16	16	0	0
5	C	14	32	31	5	0
5	D	28	64	64	0	0
5	E	14	32	32	0	0
6	A	11	24	24	14	0
6	B	11	24	20	6	0
6	D	11	24	24	18	0
7	A	16	36	36	20	0
7	C	16	36	36	0	0
7	D	8	18	17	1	0
7	E	16	36	36	10	0
8	A	5	0	2	5	0
8	B	5	0	2	1	0
8	C	5	0	2	7	0
9	A	9	20	20	0	0
9	E	9	20	20	0	0
10	A	4	10	10	0	0
10	C	8	20	20	0	0
11	E	10	22	22	1	0
All	All	14102	574	14400	415	0

The all-atom clashscore is defined as the number of clashes found per 1000 atoms (including hydrogen atoms). The all-atom clashscore for this structure is 15.

All (415) close contacts within the same asymmetric unit are listed below, sorted by their clash magnitude.

Atom-1	Atom-2	Interatomic distance (Å)	Clash overlap (Å)
1:A:397:ILE:CG1	7:A:507:OCT:H72	1.16	1.62
2:E:267:TRP:CZ3	7:E:507:OCT:C1	1.82	1.61
1:A:414:TRP:CH2	6:A:504:UND:H51	1.26	1.61
2:E:267:TRP:CZ3	7:E:507:OCT:H12	1.33	1.59
1:D:414:TRP:HZ3	6:D:507:UND:C8	1.04	1.56
2:E:267:TRP:HZ3	7:E:507:OCT:C1	0.95	1.53
1:A:414:TRP:HH2	6:A:504:UND:C5	1.20	1.51

Continued on next page...

Continued from previous page...

Atom-1	Atom-2	Interatomic distance (Å)	Clash overlap (Å)
1:A:414:TRP:CZ3	6:A:504:UND:H71	1.46	1.49
1:D:414:TRP:CZ3	6:D:507:UND:C8	1.96	1.47
1:D:414:TRP:CZ3	6:D:507:UND:C7	2.02	1.41
1:A:397:ILE:HD11	7:A:507:OCT:C6	1.49	1.37
1:A:397:ILE:HG12	7:A:507:OCT:C7	1.55	1.36
1:D:414:TRP:CH2	6:D:507:UND:H72	1.63	1.31
1:D:414:TRP:CZ3	6:D:507:UND:H82	1.60	1.31
1:A:397:ILE:CG1	7:A:507:OCT:C7	2.07	1.30
1:D:63:PHE:CD1	8:C:501:GLY:HA3	1.66	1.29
1:A:414:TRP:CZ3	6:A:504:UND:C7	2.17	1.27
1:A:241:SER:CB	1:A:255:LEU:HD22	1.64	1.25
1:D:414:TRP:CZ3	6:D:507:UND:H72	1.64	1.23
1:A:414:TRP:HH2	6:A:504:UND:C6	1.52	1.21
1:A:397:ILE:CD1	7:A:507:OCT:H72	1.71	1.20
1:A:414:TRP:CH2	6:A:504:UND:C5	2.00	1.19
1:A:414:TRP:CH2	6:A:504:UND:C6	2.26	1.19
2:E:267:TRP:CH2	7:E:507:OCT:H12	1.78	1.17
1:A:397:ILE:CD1	7:A:507:OCT:C7	2.23	1.17
1:A:397:ILE:HD11	7:A:507:OCT:H61	1.15	1.14
1:A:414:TRP:CH2	6:A:504:UND:H71	1.84	1.12
2:E:267:TRP:HZ3	7:E:507:OCT:H11	0.97	1.12
1:A:397:ILE:HD11	7:A:507:OCT:C7	1.82	1.10
1:A:411:MET:SD	4:A:503:HEX:H61	1.91	1.09
1:A:241:SER:HB2	1:A:255:LEU:HD22	1.31	1.09
1:A:397:ILE:HG12	7:A:507:OCT:C8	1.86	1.06
1:A:207:PHE:HE2	8:A:501:GLY:N	1.53	1.06
1:A:414:TRP:CH2	6:A:504:UND:C7	2.39	1.05
1:A:241:SER:HB2	1:A:255:LEU:CD2	1.87	1.04
1:A:397:ILE:HG13	7:A:507:OCT:H72	1.34	1.04
1:A:207:PHE:CE2	8:A:501:GLY:N	2.28	1.00
1:D:414:TRP:HZ3	6:D:507:UND:H82	0.84	0.98
1:A:178:VAL:HG13	1:A:182:LEU:HD13	1.46	0.98
1:A:203:ASN:HB3	1:B:65:ARG:HH12	1.29	0.97
1:A:397:ILE:HG12	7:A:507:OCT:H72	0.98	0.97
1:D:271:ARG:NH1	2:E:250:GLY:HA2	1.79	0.96
2:E:267:TRP:CZ3	7:E:507:OCT:C2	2.48	0.96
1:A:204:THR:HG23	1:B:65:ARG:NH1	1.82	0.94
1:A:178:VAL:CG1	1:A:182:LEU:HD13	1.96	0.94
1:A:397:ILE:CD1	7:A:507:OCT:C6	2.40	0.93
1:B:410:ASN:HD21	6:B:504:UND:C1	1.85	0.90
1:A:414:TRP:HZ3	6:A:504:UND:C7	1.79	0.89

Continued on next page...

Continued from previous page...

Atom-1	Atom-2	Interatomic distance (Å)	Clash overlap (Å)
1:D:414:TRP:HZ3	6:D:507:UND:H81	1.37	0.88
1:A:397:ILE:CD1	7:A:507:OCT:H61	2.02	0.86
1:A:203:ASN:HB3	1:B:65:ARG:NH1	1.91	0.86
1:A:238:SER:HB2	1:A:259:THR:HG21	1.58	0.85
1:B:410:ASN:HD21	6:B:504:UND:H13	1.41	0.85
1:A:285:ILE:CD1	4:A:509:HEX:H22	2.07	0.84
1:B:410:ASN:ND2	6:B:504:UND:H13	1.93	0.84
1:B:90:LEU:HD12	1:B:118:LEU:HB2	1.62	0.82
1:A:257:ILE:O	1:A:261:LEU:HG	1.78	0.82
1:D:63:PHE:CD1	8:C:501:GLY:CA	2.60	0.81
1:A:241:SER:CB	1:A:255:LEU:CD2	2.49	0.81
2:E:267:TRP:CZ3	7:E:507:OCT:H11	1.82	0.80
1:B:295:PHE:CE1	1:C:237:LEU:HD21	2.17	0.79
1:D:418:LYS:HE3	6:D:507:UND:H102	1.65	0.79
1:D:90:LEU:HD12	1:D:118:LEU:HB2	1.64	0.78
1:A:414:TRP:CZ3	6:A:504:UND:H51	2.15	0.77
1:A:397:ILE:HD11	7:A:507:OCT:C5	2.14	0.77
1:A:241:SER:OG	1:A:255:LEU:HD22	1.83	0.77
1:A:394:ILE:HD13	4:A:510:HEX:C4	2.05	0.77
1:B:48:PHE:HB3	1:B:184:LEU:HD11	1.67	0.76
1:C:222:TYR:O	1:C:225:ILE:HG22	1.86	0.76
1:D:414:TRP:CZ3	6:D:507:UND:H81	2.13	0.76
1:A:259:THR:HG22	1:A:294:VAL:HG21	1.65	0.76
1:C:225:ILE:HG23	1:C:226:GLN:H	1.49	0.76
1:A:414:TRP:HZ3	6:A:504:UND:H72	1.50	0.76
1:A:285:ILE:HD13	4:A:509:HEX:H22	1.68	0.76
1:D:414:TRP:CZ3	6:D:507:UND:C6	2.68	0.76
1:D:48:PHE:HB3	1:D:184:LEU:HD11	1.69	0.75
1:A:178:VAL:HG13	1:A:182:LEU:CD1	2.16	0.75
1:B:410:ASN:ND2	6:B:504:UND:C1	2.49	0.75
1:D:418:LYS:CE	6:D:507:UND:H102	2.17	0.75
1:A:285:ILE:CD1	4:A:509:HEX:C2	2.65	0.74
1:D:414:TRP:CE3	6:D:507:UND:H82	2.22	0.74
1:C:225:ILE:HG23	1:C:226:GLN:N	2.02	0.74
2:E:267:TRP:CZ3	7:E:507:OCT:H21	2.23	0.74
1:A:411:MET:CE	4:A:503:HEX:H61	2.18	0.73
1:D:55:THR:OG1	1:D:57:ASP:OD1	2.06	0.73
1:C:90:LEU:HD12	1:C:118:LEU:HB2	1.70	0.72
1:C:48:PHE:HB3	1:C:184:LEU:HD21	1.71	0.72
1:C:168:PHE:H	1:C:208:THR:HG21	1.54	0.72
1:A:414:TRP:CZ3	6:A:504:UND:C5	2.72	0.71

Continued on next page...

Continued from previous page...

Atom-1	Atom-2	Interatomic distance (Å)	Clash overlap (Å)
1:D:387:PHE:CE1	1:D:388:ILE:CD1	2.74	0.70
1:D:387:PHE:CE1	1:D:388:ILE:HD12	2.27	0.70
1:C:146:PRO:HG3	1:C:283:ILE:HD13	1.74	0.70
1:D:238:SER:HB2	1:D:259:THR:HG21	1.73	0.69
1:A:14:LEU:HA	1:A:17:LEU:HD23	1.72	0.69
1:B:295:PHE:CE1	1:C:237:LEU:CD2	2.76	0.68
1:A:87:PRO:O	1:A:90:LEU:HB3	1.93	0.68
2:E:120:ASP:OD2	2:E:183:GLY:N	2.28	0.66
2:E:96:LEU:HD12	2:E:145:ARG:HG2	1.78	0.65
2:E:189:LEU:O	2:E:190:ARG:NH1	2.30	0.65
1:B:65:ARG:HG2	1:B:129:SER:HB3	1.78	0.65
2:E:155:LEU:HB3	2:E:157:ILE:HD11	1.79	0.65
1:C:282:ALA:HB1	1:C:417:TYR:CE2	2.31	0.65
1:A:259:THR:HG22	1:A:294:VAL:CG2	2.26	0.65
1:A:397:ILE:HG12	7:A:507:OCT:H81	1.76	0.65
1:D:162:THR:OG1	1:D:164:ASN:OD1	2.15	0.64
1:B:135:THR:HG23	1:B:135:THR:O	1.97	0.64
1:D:98:LEU:O	2:E:135:THR:OG1	2.16	0.64
1:A:397:ILE:CD1	7:A:507:OCT:C8	2.76	0.63
1:D:261:LEU:HD11	2:E:282:PHE:CD1	2.33	0.63
1:C:78:TYR:O	1:C:122:ARG:NH2	2.30	0.63
1:A:414:TRP:CH2	6:A:504:UND:H62	2.30	0.63
1:A:271:ARG:HH21	1:B:226:GLN:HE21	1.46	0.63
1:A:78:TYR:O	1:A:122:ARG:NH2	2.32	0.62
1:A:103:GLU:HG2	1:B:131:ARG:HH12	1.63	0.62
1:B:38:ASN:N	1:B:38:ASN:HD22	1.97	0.62
1:D:97:ASP:OD2	1:D:160:GLY:N	2.30	0.62
1:B:389:GLN:HG3	1:B:392:LYS:HE3	1.82	0.62
2:E:129:ALA:HB2	2:E:157:ILE:HG23	1.80	0.62
1:B:295:PHE:HE1	1:C:237:LEU:HD21	1.65	0.62
1:A:10:PRO:HB2	2:E:49:ILE:HD13	1.82	0.61
8:A:501:GLY:O	1:B:65:ARG:NH2	2.33	0.61
1:C:64:LEU:HD21	1:C:98:LEU:HD11	1.82	0.61
1:B:116:LYS:HG2	1:B:130:ILE:HG22	1.82	0.61
1:D:111:ILE:HG22	1:D:112:THR:HG23	1.82	0.61
1:D:244:ILE:HB	1:D:252:ARG:HD3	1.81	0.61
1:D:414:TRP:CE3	6:D:507:UND:H61	2.36	0.61
2:E:37:ILE:HD13	2:E:100:PHE:HB2	1.82	0.61
1:B:162:THR:HG22	1:B:164:ASN:H	1.66	0.61
1:A:258:THR:HB	2:E:285:LEU:HD11	1.83	0.60
1:A:394:ILE:HD13	4:A:510:HEX:H42	1.83	0.60

Continued on next page...

Continued from previous page...

Atom-1	Atom-2	Interatomic distance (Å)	Clash overlap (Å)
2:E:233:CYS:SG	2:E:234:VAL:N	2.74	0.60
1:D:63:PHE:HD1	8:C:501:GLY:HA3	1.55	0.60
1:C:416:ILE:HD11	5:C:503:HP6:H262	1.83	0.60
1:B:9:SER:OG	1:B:12:ASP:OD2	2.20	0.59
1:D:59:ARG:HG2	1:D:135:THR:HG22	1.83	0.59
1:D:385:LYS:O	1:D:389:GLN:HG3	2.02	0.59
1:A:204:THR:HG23	1:B:65:ARG:CZ	2.33	0.59
1:A:246:MET:SD	1:A:246:MET:N	2.75	0.59
1:C:222:TYR:HA	1:C:225:ILE:HG22	1.84	0.59
1:A:257:ILE:O	1:A:261:LEU:CG	2.48	0.58
1:D:241:SER:HB2	1:D:255:LEU:HD23	1.84	0.58
1:C:257:ILE:O	1:C:261:LEU:HD13	2.03	0.58
2:E:76:THR:O	2:E:76:THR:HG22	2.02	0.58
2:E:164:ASP:H	2:E:173:GLN:HE22	1.51	0.58
1:A:255:LEU:HD23	1:A:259:THR:OG1	2.04	0.58
2:E:267:TRP:CH2	7:E:507:OCT:C2	2.87	0.58
1:C:225:ILE:CG2	1:C:226:GLN:H	2.16	0.58
1:A:178:VAL:HG11	1:A:182:LEU:HD13	1.82	0.58
1:C:100:PHE:HB2	1:C:103:GLU:HB3	1.86	0.57
1:A:207:PHE:HE2	8:A:501:GLY:CA	2.17	0.57
2:E:470:TYR:HD1	2:E:471:TRP:HD1	1.53	0.57
1:A:53:GLU:OE2	1:A:218:ARG:NH2	2.38	0.57
1:A:61:ASN:ND2	1:A:133:THR:OG1	2.37	0.57
1:C:413:TYR:HD2	1:C:414:TRP:HD1	1.52	0.57
1:A:238:SER:HB2	1:A:259:THR:CG2	2.32	0.57
1:D:312:LYS:HB2	1:D:383:MET:HB2	1.87	0.56
1:A:411:MET:SD	4:A:503:HEX:C6	2.82	0.56
1:B:285:ILE:HD11	4:B:506:HEX:C6	2.35	0.56
1:D:131:ARG:NH1	1:C:103:GLU:OE2	2.38	0.56
1:D:257:ILE:HG12	2:E:279:LEU:HD13	1.88	0.56
1:A:109:HIS:CD2	1:A:131:ARG:HD3	2.40	0.56
1:A:241:SER:HB2	1:A:255:LEU:CD1	2.35	0.56
1:C:222:TYR:O	1:C:225:ILE:CG2	2.53	0.56
1:B:280:VAL:HG12	1:C:225:ILE:CD1	2.35	0.56
2:E:121:LEU:HD11	2:E:179:LEU:HB3	1.88	0.56
1:D:414:TRP:CZ3	6:D:507:UND:H61	2.39	0.56
1:A:114:ASP:HB3	1:A:116:LYS:HE2	1.88	0.56
1:B:148:ASP:OD2	1:B:150:GLN:NE2	2.39	0.55
1:B:413:TYR:HD1	1:B:414:TRP:HD1	1.54	0.55
2:E:265:SER:HB2	2:E:279:LEU:HG	1.88	0.55
1:D:78:TYR:O	1:D:122:ARG:NH2	2.32	0.55

Continued on next page...

Continued from previous page...

Atom-1	Atom-2	Interatomic distance (Å)	Clash overlap (Å)
1:D:418:LYS:NZ	6:D:507:UND:H102	2.20	0.55
2:E:132:HIS:O	2:E:138:ASN:ND2	2.40	0.55
2:E:65:PHE:HD1	2:E:200:GLN:HG3	1.71	0.55
1:B:146:PRO:HD2	1:B:282:ALA:HB3	1.88	0.55
2:E:453:LEU:HA	2:E:456:ARG:HG2	1.87	0.55
1:B:65:ARG:HG2	1:B:129:SER:CB	2.36	0.55
1:B:162:THR:HG22	1:B:163:MET:N	2.20	0.54
1:B:90:LEU:HD21	1:B:128:TYR:HE1	1.73	0.54
1:B:38:ASN:HD22	1:B:38:ASN:H	1.52	0.54
1:B:280:VAL:HG12	1:C:225:ILE:HD12	1.90	0.54
2:E:107:THR:HG23	2:E:107:THR:O	2.07	0.54
1:B:238:SER:HB3	1:B:259:THR:HG21	1.89	0.54
1:A:97:ASP:OD2	1:A:160:GLY:N	2.40	0.54
1:C:225:ILE:CG2	1:C:226:GLN:N	2.70	0.54
1:D:46:ASN:HB3	1:D:61:ASN:HD22	1.72	0.54
1:D:57:ASP:HA	1:D:137:ALA:HA	1.90	0.54
1:A:397:ILE:HD13	7:A:507:OCT:H82	1.90	0.54
1:A:285:ILE:HD11	4:A:509:HEX:C2	2.38	0.54
1:A:182:LEU:HD21	1:A:184:LEU:CD2	2.38	0.53
1:A:253:VAL:O	1:A:257:ILE:HG12	2.08	0.53
1:A:14:LEU:HD12	1:A:17:LEU:HD21	1.89	0.53
1:C:155:GLN:HG2	1:C:211:GLU:HG2	1.90	0.53
2:E:220:ASN:OD1	2:E:222:THR:OG1	2.27	0.53
1:C:114:ASP:OD1	1:C:114:ASP:N	2.42	0.53
1:C:115:ASN:OD1	1:C:115:ASN:N	2.41	0.53
1:A:397:ILE:CG1	7:A:507:OCT:C8	2.62	0.53
1:B:256:GLY:HA3	1:B:298:LEU:HD13	1.90	0.53
1:B:38:ASN:HA	1:B:167:ILE:HG23	1.91	0.52
1:A:238:SER:CB	1:A:259:THR:HG21	2.35	0.52
1:B:25:ASP:OD1	1:B:25:ASP:N	2.38	0.52
1:D:63:PHE:CE1	8:C:501:GLY:HA3	2.32	0.52
1:A:153:ILE:HG22	1:A:213:ARG:HG2	1.91	0.52
1:B:241:SER:HB2	1:B:255:LEU:HD22	1.91	0.52
1:B:285:ILE:HD11	4:B:506:HEX:H63	1.92	0.52
1:C:145:PHE:HD2	1:C:283:ILE:HB	1.76	0.52
1:D:271:ARG:HH12	2:E:250:GLY:HA2	1.69	0.51
1:A:397:ILE:CD1	7:A:507:OCT:H82	2.39	0.51
1:D:200:LYS:NZ	1:D:202:TYR:OH	2.35	0.51
1:B:274:LEU:HD22	1:B:281:LYS:HD3	1.91	0.51
1:D:387:PHE:CZ	1:D:388:ILE:CD1	2.93	0.51
1:B:98:LEU:O	1:C:112:THR:OG1	2.24	0.51

Continued on next page...

Continued from previous page...

Atom-1	Atom-2	Interatomic distance (Å)	Clash overlap (Å)
1:D:65:ARG:NE	8:C:501:GLY:OXT	2.44	0.51
1:C:147:MET:HE1	1:C:418:LYS:HD3	1.92	0.51
1:D:75:TYR:OH	1:D:81:ASP:O	2.26	0.51
1:A:233:LEU:HD13	2:E:315:LEU:HD22	1.93	0.51
1:D:203:ASN:OD1	2:E:200:GLN:NE2	2.29	0.51
1:A:285:ILE:CD1	4:A:509:HEX:H21	2.39	0.51
1:D:387:PHE:CZ	1:D:388:ILE:HD12	2.45	0.50
1:D:65:ARG:NH2	8:C:501:GLY:OXT	2.45	0.50
1:C:146:PRO:HG3	1:C:283:ILE:CD1	2.39	0.50
1:B:84:ASP:OD1	1:B:119:ARG:NE	2.42	0.50
1:C:222:TYR:C	1:C:225:ILE:HG22	2.32	0.50
1:D:39:VAL:HG23	1:D:168:PHE:HA	1.93	0.50
1:A:244:ILE:O	1:A:252:ARG:NH1	2.45	0.50
1:A:84:ASP:OD1	1:A:119:ARG:NE	2.34	0.50
1:C:146:PRO:HG3	1:C:283:ILE:HB	1.92	0.50
1:A:28:ILE:O	1:A:72:ARG:NH2	2.45	0.50
1:A:221:GLY:O	1:A:225:ILE:HG12	2.11	0.50
1:B:410:ASN:ND2	6:B:504:UND:H12	2.27	0.50
1:C:222:TYR:CA	1:C:225:ILE:HG22	2.42	0.50
2:E:267:TRP:CH2	7:E:507:OCT:C1	2.57	0.50
1:D:414:TRP:CH2	6:D:507:UND:C7	2.49	0.49
1:A:160:GLY:HA2	1:B:117:LEU:HD13	1.94	0.49
1:A:98:LEU:O	1:B:112:THR:OG1	2.27	0.49
1:C:394:ILE:HA	1:C:397:ILE:HG22	1.94	0.49
2:E:185:THR:HG23	2:E:187:ASP:H	1.77	0.49
1:D:112:THR:O	1:D:113:THR:OG1	2.27	0.49
1:A:394:ILE:HA	1:A:397:ILE:HG22	1.94	0.49
1:D:394:ILE:HA	1:D:397:ILE:HG22	1.95	0.49
1:A:131:ARG:NH2	2:E:124:ALA:O	2.46	0.49
1:B:103:GLU:OE2	1:C:131:ARG:NH1	2.46	0.49
1:A:111:ILE:O	1:A:112:THR:OG1	2.30	0.49
1:B:17:LEU:HD11	1:B:75:TYR:HB3	1.94	0.49
1:B:410:ASN:HD21	6:B:504:UND:H12	1.73	0.49
2:E:85:LEU:HD21	2:E:121:LEU:HD23	1.95	0.49
2:E:267:TRP:HE1	2:E:456:ARG:HD3	1.78	0.49
1:A:285:ILE:HD11	4:A:509:HEX:C4	2.43	0.48
1:D:221:GLY:O	1:D:225:ILE:HG12	2.12	0.48
1:A:222:TYR:OH	2:E:300:LYS:NZ	2.45	0.48
2:E:121:LEU:HD21	2:E:179:LEU:HD23	1.95	0.48
1:B:284:ASP:OD1	1:B:285:ILE:N	2.45	0.48
1:D:55:THR:OG1	1:D:57:ASP:CG	2.52	0.48

Continued on next page...

Continued from previous page...

Atom-1	Atom-2	Interatomic distance (Å)	Clash overlap (Å)
1:D:234:ILE:HG21	1:D:262:THR:HG21	1.96	0.48
2:E:127:LYS:HD2	2:E:160:SER:HB3	1.96	0.48
1:C:416:ILE:CD1	5:C:503:HP6:H241	2.44	0.48
1:B:111:ILE:O	1:B:112:THR:OG1	2.32	0.48
1:C:234:ILE:HA	1:C:237:LEU:HB3	1.95	0.48
1:A:17:LEU:HG	1:A:18:MET:N	2.29	0.48
1:A:257:ILE:O	1:A:261:LEU:CD1	2.62	0.47
1:C:416:ILE:HD12	5:C:503:HP6:C24	2.44	0.47
1:D:111:ILE:O	1:D:112:THR:OG1	2.32	0.47
1:A:9:SER:OG	1:A:12:ASP:OD2	2.23	0.47
1:B:99:PHE:CE1	1:B:159:PHE:HB2	2.49	0.47
2:E:143:ILE:HG12	2:E:149:VAL:HG12	1.96	0.47
1:D:387:PHE:CE1	1:D:388:ILE:HD11	2.49	0.47
1:D:415:ILE:HD11	4:D:505:HEX:H51	1.95	0.47
1:B:241:SER:HB2	1:B:255:LEU:HD13	1.96	0.47
1:A:142:LEU:N	1:A:279:TYR:OH	2.39	0.47
1:C:198:CYS:SG	1:C:211:GLU:HG3	2.54	0.47
1:B:27:ARG:HD2	1:C:89:MET:HG3	1.97	0.47
1:B:111:ILE:HG22	1:B:112:THR:HG23	1.95	0.47
1:D:412:PHE:CZ	1:D:416:ILE:HD11	2.50	0.47
2:E:210:ASP:OD1	2:E:210:ASP:N	2.46	0.47
1:C:99:PHE:CE1	1:C:159:PHE:HB2	2.50	0.47
1:B:394:ILE:HA	1:B:397:ILE:HG22	1.97	0.47
1:B:105:GLY:O	1:B:135:THR:HG22	2.15	0.46
1:D:48:PHE:HE2	1:D:51:ILE:HD11	1.80	0.46
1:D:98:LEU:HD12	1:D:156:LEU:HD23	1.96	0.46
1:D:300:GLU:HG2	7:D:510:OCT:H21	1.96	0.46
1:B:87:PRO:HA	1:B:90:LEU:HB3	1.98	0.46
2:E:206:LEU:HD13	2:E:209:PHE:HB2	1.97	0.46
1:A:304:VAL:HA	1:A:307:VAL:HG12	1.97	0.46
2:E:186:THR:O	2:E:190:ARG:NH2	2.38	0.46
1:B:64:LEU:HD21	1:B:98:LEU:HD11	1.96	0.46
1:C:218:ARG:HD3	1:C:223:TYR:HE2	1.81	0.46
1:A:260:VAL:HG11	1:A:295:PHE:CE2	2.51	0.46
2:E:113:TYR:HD2	2:E:118:LYS:HD3	1.81	0.46
1:D:284:ASP:OD1	1:D:285:ILE:N	2.48	0.46
1:C:144:ASN:O	1:C:148:ASP:N	2.49	0.46
1:D:220:MET:SD	1:D:220:MET:N	2.89	0.46
1:A:106:ALA:HB3	1:B:111:ILE:HG13	1.98	0.46
1:C:169:GLU:OE1	1:C:197:TYR:OH	2.34	0.46
2:E:471:TRP:O	2:E:475:LEU:HB2	2.16	0.46

Continued on next page...

Continued from previous page...

Atom-1	Atom-2	Interatomic distance (Å)	Clash overlap (Å)
11:E:502:D10:H31	4:E:503:HEX:C1	2.46	0.46
1:D:170:TRP:HE1	1:D:210:ILE:HB	1.81	0.45
1:C:70:ASP:OD1	1:C:72:ARG:NH1	2.49	0.45
1:D:84:ASP:OD1	1:D:84:ASP:N	2.45	0.45
1:A:241:SER:HB2	1:A:255:LEU:HD13	1.97	0.45
1:B:180:ASP:OD1	1:B:180:ASP:N	2.49	0.45
2:E:186:THR:HA	2:E:190:ARG:HH12	1.82	0.45
1:D:112:THR:OG1	1:C:98:LEU:O	2.27	0.45
2:E:122:PHE:CE1	2:E:182:PHE:HB2	2.52	0.45
2:E:169:PRO:HD2	2:E:306:ALA:HB3	1.98	0.45
2:E:281:ILE:HA	2:E:284:VAL:HG22	1.99	0.45
1:C:414:TRP:O	1:C:418:LYS:HB2	2.17	0.45
1:A:225:ILE:HG13	1:A:226:GLN:N	2.32	0.45
1:D:261:LEU:CD1	2:E:282:PHE:CD1	3.00	0.45
8:B:502:GLY:HA3	1:C:63:PHE:CG	2.52	0.45
1:B:75:TYR:OH	1:B:81:ASP:O	2.31	0.45
1:B:112:THR:O	1:B:113:THR:OG1	2.27	0.45
1:A:8:MET:N	1:A:77:GLU:OE2	2.50	0.45
1:C:75:TYR:OH	1:C:81:ASP:O	2.31	0.45
1:D:253:VAL:HG21	2:E:275:ALA:HB1	1.99	0.44
2:E:277:VAL:O	2:E:281:ILE:HG23	2.17	0.44
1:A:50:SER:OG	1:A:59:ARG:HB3	2.18	0.44
1:D:257:ILE:O	1:D:261:LEU:HG	2.17	0.44
1:D:311:HIS:HD1	1:D:387:PHE:HZ	1.64	0.44
1:A:64:LEU:O	1:A:129:SER:HA	2.17	0.44
1:C:260:VAL:HG13	1:C:295:PHE:HE1	1.82	0.44
2:E:69:PHE:HD1	2:E:206:LEU:HD21	1.82	0.44
2:E:263:TRP:CH2	2:E:460:PRO:HA	2.52	0.44
1:D:99:PHE:CE1	1:D:159:PHE:HB2	2.52	0.44
1:D:119:ARG:HH11	1:D:127:LEU:HD23	1.82	0.44
1:D:225:ILE:HG13	1:D:226:GLN:N	2.33	0.44
1:B:61:ASN:HD21	1:B:109:HIS:HE1	1.64	0.44
1:C:111:ILE:O	1:C:112:THR:OG1	2.35	0.44
2:E:193:TRP:NE1	2:E:234:VAL:HB	2.33	0.44
1:B:70:ASP:OD1	1:B:72:ARG:NH1	2.51	0.43
1:B:85:LEU:HB2	1:B:118:LEU:HB3	2.00	0.43
1:B:117:LEU:HB3	1:B:129:SER:OG	2.18	0.43
1:B:277:VAL:O	1:C:222:TYR:HB2	2.18	0.43
1:A:413:TYR:HD2	1:A:414:TRP:HD1	1.66	0.43
1:D:117:LEU:HB3	1:D:129:SER:OG	2.19	0.43
1:A:100:PHE:HB2	1:A:103:GLU:HB3	2.00	0.43

Continued on next page...

Continued from previous page...

Atom-1	Atom-2	Interatomic distance (Å)	Clash overlap (Å)
1:A:207:PHE:CE2	8:A:501:GLY:CA	2.98	0.43
1:A:250:PRO:O	1:A:253:VAL:HG12	2.17	0.43
1:B:237:LEU:HG	1:B:255:LEU:HD21	2.00	0.43
1:C:158:SER:HB2	1:C:168:PHE:HE1	1.83	0.43
1:D:222:TYR:CE2	1:C:276:LYS:HE2	2.53	0.43
1:D:249:ALA:HA	1:D:301:TYR:OH	2.19	0.43
1:D:418:LYS:NZ	6:D:507:UND:C10	2.82	0.43
1:A:80:ASP:OD2	2:E:54:LYS:NZ	2.51	0.43
1:C:170:TRP:NE1	1:C:210:ILE:HB	2.33	0.43
1:C:416:ILE:HD12	5:C:503:HP6:H241	2.01	0.43
1:A:222:TYR:HB2	2:E:301:VAL:O	2.18	0.43
1:B:24:TYR:HE1	1:B:72:ARG:HG3	1.84	0.43
2:E:281:ILE:O	2:E:285:LEU:HG	2.19	0.43
1:C:263:MET:HG3	1:C:291:LEU:HD22	2.01	0.42
1:C:416:ILE:CD1	5:C:503:HP6:C24	2.97	0.42
1:D:102:ASN:N	1:D:102:ASN:OD1	2.53	0.42
1:A:170:TRP:NE1	1:A:210:ILE:HB	2.34	0.42
1:A:170:TRP:HE1	1:A:210:ILE:HB	1.84	0.42
1:B:304:VAL:O	1:B:307:VAL:HG12	2.19	0.42
2:E:76:THR:O	2:E:76:THR:CG2	2.66	0.42
2:E:266:PHE:CE2	2:E:456:ARG:HB3	2.54	0.42
1:D:10:PRO:HB3	1:C:32:PHE:HD2	1.85	0.42
1:C:112:THR:O	1:C:113:THR:OG1	2.26	0.42
1:D:415:ILE:HG12	4:D:505:HEX:H61	2.02	0.42
1:A:48:PHE:CD1	1:A:184:LEU:HD11	2.55	0.42
1:B:162:THR:CG2	1:B:163:MET:N	2.81	0.42
1:C:170:TRP:HE1	1:C:210:ILE:HB	1.85	0.42
2:E:266:PHE:CZ	2:E:455:ALA:HB3	2.55	0.42
2:E:445:PRO:O	2:E:446:THR:HG22	2.20	0.42
1:D:387:PHE:CZ	1:D:388:ILE:HD11	2.55	0.42
1:A:195:LEU:C	1:A:195:LEU:HD12	2.40	0.42
1:A:225:ILE:HG13	1:A:226:GLN:H	1.85	0.42
1:C:18:MET:SD	1:C:18:MET:N	2.92	0.42
1:A:251:ALA:HB2	2:E:274:ALA:HA	2.02	0.42
1:A:262:THR:OG1	2:E:285:LEU:HD22	2.19	0.42
2:E:306:ALA:O	2:E:309:VAL:HG12	2.20	0.42
1:A:188:ILE:HG13	1:A:217:GLU:HB3	2.01	0.42
1:A:16:LYS:HE3	1:A:16:LYS:HB3	1.91	0.41
1:C:57:ASP:HA	1:C:137:ALA:HA	2.02	0.41
1:C:282:ALA:O	1:C:285:ILE:HG22	2.20	0.41
1:D:90:LEU:HD21	1:D:128:TYR:CE1	2.55	0.41

Continued on next page...

Continued from previous page...

Atom-1	Atom-2	Interatomic distance (Å)	Clash overlap (Å)
1:A:117:LEU:HB3	1:A:129:SER:OG	2.21	0.41
1:B:75:TYR:HE1	1:B:120:ILE:HG22	1.85	0.41
1:C:141:ASP:OD1	1:C:141:ASP:N	2.49	0.41
1:C:222:TYR:HA	1:C:225:ILE:CG2	2.51	0.41
2:E:178:GLN:HG2	2:E:235:GLU:HG2	2.01	0.41
7:A:508:OCT:H51	7:A:508:OCT:H13	2.02	0.41
1:C:260:VAL:HG21	1:C:298:LEU:HD22	2.03	0.41
2:E:324:GLU:O	2:E:327:VAL:HG12	2.19	0.41
1:D:225:ILE:HG13	1:D:226:GLN:H	1.86	0.41
1:B:293:PHE:HD1	1:B:293:PHE:HA	1.70	0.41
1:D:415:ILE:CD1	4:D:505:HEX:H51	2.51	0.41
1:B:38:ASN:N	1:B:38:ASN:ND2	2.66	0.41
1:D:63:PHE:CG	8:C:501:GLY:HA3	2.40	0.41
1:B:402:PHE:HD1	1:B:402:PHE:HA	1.76	0.41
1:D:141:ASP:N	1:D:141:ASP:OD1	2.53	0.41
1:A:172:GLU:HG2	1:A:173:GLN:HG2	2.01	0.41
1:B:295:PHE:CE1	1:C:237:LEU:HD22	2.52	0.41
1:D:103:GLU:OE2	2:E:154:ARG:NH1	2.54	0.41
1:A:414:TRP:HE3	4:A:503:HEX:H41	1.86	0.41
3:D:501:NAG:O7	3:D:501:NAG:O4	2.26	0.41
1:A:103:GLU:CG	1:B:131:ARG:HH12	2.33	0.41
1:B:85:LEU:HB3	1:B:89:MET:SD	2.61	0.41
2:E:196:GLY:O	2:E:198:PRO:HD3	2.21	0.41
1:B:299:LEU:HD11	1:C:240:ILE:HG21	2.02	0.41
1:C:198:CYS:O	1:C:200:LYS:HG3	2.20	0.41
1:C:243:TRP:HA	1:C:399:ARG:NH1	2.35	0.41
1:A:112:THR:O	1:A:113:THR:OG1	2.28	0.40
1:B:400:ILE:HD12	1:B:400:ILE:HA	1.93	0.40
1:A:293:PHE:HD1	1:A:293:PHE:HA	1.73	0.40
1:B:295:PHE:CZ	1:C:237:LEU:CD2	3.04	0.40
1:C:417:TYR:HD1	1:C:417:TYR:HA	1.71	0.40
1:D:415:ILE:HD12	1:D:415:ILE:HA	1.94	0.40
1:B:44:PHE:HA	1:B:177:GLN:O	2.21	0.40
1:C:249:ALA:N	1:C:250:PRO:HD2	2.36	0.40
2:E:254:PRO:O	2:E:258:ILE:HG12	2.21	0.40
1:A:39:VAL:HG12	1:A:68:TRP:HB3	2.03	0.40
1:A:130:ILE:HD12	1:A:132:ILE:HD11	2.03	0.40
1:B:108:PHE:HE1	1:B:130:ILE:HD12	1.87	0.40
1:B:149:VAL:HG22	1:B:217:GLU:HG2	2.03	0.40

There are no symmetry-related clashes.

5.3 Torsion angles [i](#)

5.3.1 Protein backbone [i](#)

In the following table, the Percentiles column shows the percent Ramachandran outliers of the chain as a percentile score with respect to all PDB entries followed by that with respect to all EM entries.

The Analysed column shows the number of residues for which the backbone conformation was analysed, and the total number of residues.

Mol	Chain	Analysed	Favoured	Allowed	Outliers	Percentiles	
1	A	337/367 (92%)	318 (94%)	18 (5%)	1 (0%)	41	75
1	B	335/367 (91%)	314 (94%)	21 (6%)	0	100	100
1	C	332/367 (90%)	313 (94%)	18 (5%)	1 (0%)	41	75
1	D	341/367 (93%)	317 (93%)	24 (7%)	0	100	100
2	E	328/680 (48%)	311 (95%)	17 (5%)	0	100	100
All	All	1673/2148 (78%)	1573 (94%)	98 (6%)	2 (0%)	54	84

All (2) Ramachandran outliers are listed below:

Mol	Chain	Res	Type
1	C	225	ILE
1	A	88	SER

5.3.2 Protein sidechains [i](#)

In the following table, the Percentiles column shows the percent sidechain outliers of the chain as a percentile score with respect to all PDB entries followed by that with respect to all EM entries.

The Analysed column shows the number of residues for which the sidechain conformation was analysed, and the total number of residues.

Mol	Chain	Analysed	Rotameric	Outliers	Percentiles	
1	A	306/328 (93%)	297 (97%)	9 (3%)	42	65
1	B	304/328 (93%)	292 (96%)	12 (4%)	32	59
1	C	300/328 (92%)	288 (96%)	12 (4%)	31	58
1	D	310/328 (94%)	303 (98%)	7 (2%)	50	71
2	E	300/598 (50%)	289 (96%)	11 (4%)	34	60
All	All	1520/1910 (80%)	1469 (97%)	51 (3%)	40	62

All (51) residues with a non-rotameric sidechain are listed below:

Mol	Chain	Res	Type
1	D	18	MET
1	D	32	PHE
1	D	39	VAL
1	D	108	PHE
1	D	138	CYS
1	D	198	CYS
1	D	242	PHE
1	A	17	LEU
1	A	18	MET
1	A	37	VAL
1	A	48	PHE
1	A	86	ASP
1	A	211	GLU
1	A	242	PHE
1	A	295	PHE
1	A	417	TYR
1	B	18	MET
1	B	38	ASN
1	B	39	VAL
1	B	48	PHE
1	B	208	THR
1	B	237	LEU
1	B	245	ASN
1	B	287	MET
1	B	293	PHE
1	B	295	PHE
1	B	307	VAL
1	B	402	PHE
1	C	32	PHE
1	C	48	PHE
1	C	55	THR
1	C	73	LEU
1	C	115	ASN
1	C	135	THR
1	C	263	MET
1	C	281	LYS
1	C	284	ASP
1	C	399	ARG
1	C	402	PHE
1	C	417	TYR
2	E	40	ARG
2	E	53	PHE

Continued on next page...

Continued from previous page...

Mol	Chain	Res	Type
2	E	153	MET
2	E	161	CYS
2	E	167	LEU
2	E	221	CYS
2	E	233	CYS
2	E	257	LEU
2	E	267	TRP
2	E	279	LEU
2	E	446	THR

Sometimes sidechains can be flipped to improve hydrogen bonding and reduce clashes. All (4) such sidechains are listed below:

Mol	Chain	Res	Type
1	A	61	ASN
1	B	109	HIS
1	B	410	ASN
2	E	173	GLN

5.3.3 RNA [i](#)

There are no RNA molecules in this entry.

5.4 Non-standard residues in protein, DNA, RNA chains [i](#)

There are no non-standard protein/DNA/RNA residues in this entry.

5.5 Carbohydrates [i](#)

There are no monosaccharides in this entry.

5.6 Ligand geometry [i](#)

43 ligands are modelled in this entry.

In the following table, the Counts columns list the number of bonds (or angles) for which Mogul statistics could be retrieved, the number of bonds (or angles) that are observed in the model and the number of bonds (or angles) that are defined in the Chemical Component Dictionary. The Link column lists molecule types, if any, to which the group is linked. The Z score for a bond length (or angle) is the number of standard deviations the observed value is removed from the

expected value. A bond length (or angle) with $|Z| > 2$ is considered an outlier worth inspection. RMSZ is the root-mean-square of all Z scores of the bond lengths (or angles).

Mol	Type	Chain	Res	Link	Bond lengths			Bond angles		
					Counts	RMSZ	$\# Z > 2$	Counts	RMSZ	$\# Z > 2$
3	NAG	B	503	1	14,14,15	0.29	0	17,19,21	0.58	0
4	HEX	E	503	-	5,5,5	0.15	0	4,4,4	0.13	0
6	UND	B	504	-	10,10,10	0.10	0	9,9,9	0.09	0
5	HP6	C	503	-	6,6,6	0.13	0	5,5,5	0.12	0
9	DD9	E	504	-	8,8,8	0.12	0	7,7,7	0.10	0
4	HEX	B	501	-	5,5,5	0.15	0	4,4,4	0.13	0
4	HEX	D	505	-	5,5,5	0.15	0	4,4,4	0.13	0
4	HEX	A	510	-	5,5,5	0.14	0	4,4,4	0.13	0
5	HP6	B	505	-	6,6,6	0.14	0	5,5,5	0.12	0
7	OCT	E	507	-	7,7,7	0.12	0	6,6,6	0.11	0
6	UND	A	504	-	10,10,10	0.11	0	9,9,9	0.09	0
5	HP6	C	505	-	6,6,6	0.13	0	5,5,5	0.12	0
7	OCT	E	505	-	7,7,7	0.12	0	6,6,6	0.11	0
8	GLY	B	502	-	4,4,4	1.16	1 (25%)	3,4,4	1.63	1 (33%)
10	NBU	A	506	-	3,3,3	0.24	0	2,2,2	0.41	0
10	NBU	C	508	-	3,3,3	0.16	0	2,2,2	0.51	0
3	NAG	A	502	1	14,14,15	0.22	0	17,19,21	0.48	0
3	NAG	D	501	1	14,14,15	0.75	1 (7%)	17,19,21	0.80	0
7	OCT	D	510	-	7,7,7	0.12	0	6,6,6	0.11	0
3	NAG	E	501	2	14,14,15	0.86	1 (7%)	17,19,21	0.90	1 (5%)
5	HP6	D	503	-	6,6,6	0.14	0	5,5,5	0.12	0
5	HP6	E	508	-	6,6,6	0.13	0	5,5,5	0.12	0
5	HP6	D	508	-	6,6,6	0.13	0	5,5,5	0.12	0
11	D10	E	502	-	9,9,9	0.12	0	8,8,8	0.14	0
4	HEX	A	509	-	5,5,5	0.14	0	4,4,4	0.13	0
8	GLY	C	501	-	4,4,4	1.15	1 (25%)	3,4,4	1.65	1 (33%)
4	HEX	D	502	-	5,5,5	0.14	0	4,4,4	0.13	0
7	OCT	C	504	-	7,7,7	0.12	0	6,6,6	0.11	0
4	HEX	C	509	-	5,5,5	0.15	0	4,4,4	0.13	0
8	GLY	A	501	-	4,4,4	1.16	1 (25%)	3,4,4	1.67	1 (33%)
5	HP6	D	509	-	6,6,6	0.14	0	5,5,5	0.12	0
3	NAG	C	502	1	14,14,15	0.20	0	17,19,21	0.37	0
4	HEX	B	506	-	5,5,5	0.15	0	4,4,4	0.13	0
4	HEX	A	503	-	5,5,5	0.15	0	4,4,4	0.13	0
10	NBU	C	506	-	3,3,3	0.17	0	2,2,2	0.51	0
4	HEX	D	504	-	5,5,5	0.15	0	4,4,4	0.13	0
7	OCT	C	507	-	7,7,7	0.13	0	6,6,6	0.07	0
7	OCT	A	508	-	7,7,7	0.16	0	6,6,6	0.13	0
7	OCT	A	507	-	7,7,7	0.12	0	6,6,6	0.11	0

Mol	Type	Chain	Res	Link	Bond lengths			Bond angles		
					Counts	RMSZ	# Z > 2	Counts	RMSZ	# Z > 2
6	UND	D	507	-	10,10,10	0.11	0	9,9,9	0.09	0
9	DD9	A	505	-	8,8,8	0.12	0	7,7,7	0.10	0
5	HP6	E	506	-	6,6,6	0.14	0	5,5,5	0.12	0
5	HP6	D	506	-	6,6,6	0.14	0	5,5,5	0.12	0

In the following table, the Chirals column lists the number of chiral outliers, the number of chiral centers analysed, the number of these observed in the model and the number defined in the Chemical Component Dictionary. Similar counts are reported in the Torsion and Rings columns. '-' means no outliers of that kind were identified.

Mol	Type	Chain	Res	Link	Chirals	Torsions	Rings
3	NAG	B	503	1	-	4/6/23/26	0/1/1/1
4	HEX	E	503	-	-	0/3/3/3	-
6	UND	B	504	-	-	0/8/8/8	-
5	HP6	C	503	-	-	0/4/4/4	-
9	DD9	E	504	-	-	0/6/6/6	-
4	HEX	B	501	-	-	0/3/3/3	-
4	HEX	D	505	-	-	0/3/3/3	-
4	HEX	A	510	-	-	1/3/3/3	-
5	HP6	B	505	-	-	0/4/4/4	-
7	OCT	E	507	-	-	0/5/5/5	-
6	UND	A	504	-	-	0/8/8/8	-
5	HP6	C	505	-	-	0/4/4/4	-
7	OCT	E	505	-	-	0/5/5/5	-
8	GLY	B	502	-	-	0/2/2/2	-
10	NBU	A	506	-	-	0/1/1/1	-
10	NBU	C	508	-	-	1/1/1/1	-
3	NAG	A	502	1	-	0/6/23/26	0/1/1/1
3	NAG	D	501	1	-	4/6/23/26	0/1/1/1
7	OCT	D	510	-	-	0/5/5/5	-
3	NAG	E	501	2	-	4/6/23/26	0/1/1/1
5	HP6	D	503	-	-	0/4/4/4	-
5	HP6	E	508	-	-	0/4/4/4	-
5	HP6	D	508	-	-	0/4/4/4	-
11	D10	E	502	-	-	0/7/7/7	-
4	HEX	A	509	-	-	0/3/3/3	-
8	GLY	C	501	-	-	0/2/2/2	-
4	HEX	D	502	-	-	0/3/3/3	-
7	OCT	C	504	-	-	0/5/5/5	-
4	HEX	C	509	-	-	0/3/3/3	-
8	GLY	A	501	-	-	2/2/2/2	-
5	HP6	D	509	-	-	0/4/4/4	-

Continued on next page...

Continued from previous page...

Mol	Type	Chain	Res	Link	Chirals	Torsions	Rings
3	NAG	C	502	1	-	1/6/23/26	0/1/1/1
4	HEX	B	506	-	-	0/3/3/3	-
4	HEX	A	503	-	-	0/3/3/3	-
10	NBU	C	506	-	-	1/1/1/1	-
4	HEX	D	504	-	-	0/3/3/3	-
7	OCT	C	507	-	-	2/5/5/5	-
7	OCT	A	508	-	-	4/5/5/5	-
7	OCT	A	507	-	-	0/5/5/5	-
6	UND	D	507	-	-	0/8/8/8	-
9	DD9	A	505	-	-	0/6/6/6	-
5	HP6	E	506	-	-	0/4/4/4	-
5	HP6	D	506	-	-	0/4/4/4	-

All (5) bond length outliers are listed below:

Mol	Chain	Res	Type	Atoms	Z	Observed(Å)	Ideal(Å)
3	D	501	NAG	O5-C1	-2.68	1.39	1.43
3	E	501	NAG	C1-C2	2.40	1.55	1.52
8	B	502	GLY	OXT-C	-2.18	1.23	1.30
8	C	501	GLY	OXT-C	-2.17	1.23	1.30
8	A	501	GLY	OXT-C	-2.17	1.23	1.30

All (4) bond angle outliers are listed below:

Mol	Chain	Res	Type	Atoms	Z	Observed(°)	Ideal(°)
3	E	501	NAG	C1-O5-C5	2.89	116.11	112.19
8	A	501	GLY	OXT-C-O	-2.16	117.92	123.30
8	C	501	GLY	OXT-C-O	-2.10	118.08	123.30
8	B	502	GLY	OXT-C-O	-2.03	118.24	123.30

There are no chirality outliers.

All (24) torsion outliers are listed below:

Mol	Chain	Res	Type	Atoms
3	B	503	NAG	C8-C7-N2-C2
3	B	503	NAG	O7-C7-N2-C2
8	A	501	GLY	O-C-CA-N
10	C	506	NBU	C1-C2-C3-C4
10	C	508	NBU	C1-C2-C3-C4
3	E	501	NAG	O5-C5-C6-O6
3	E	501	NAG	C8-C7-N2-C2

Continued on next page...

Continued from previous page...

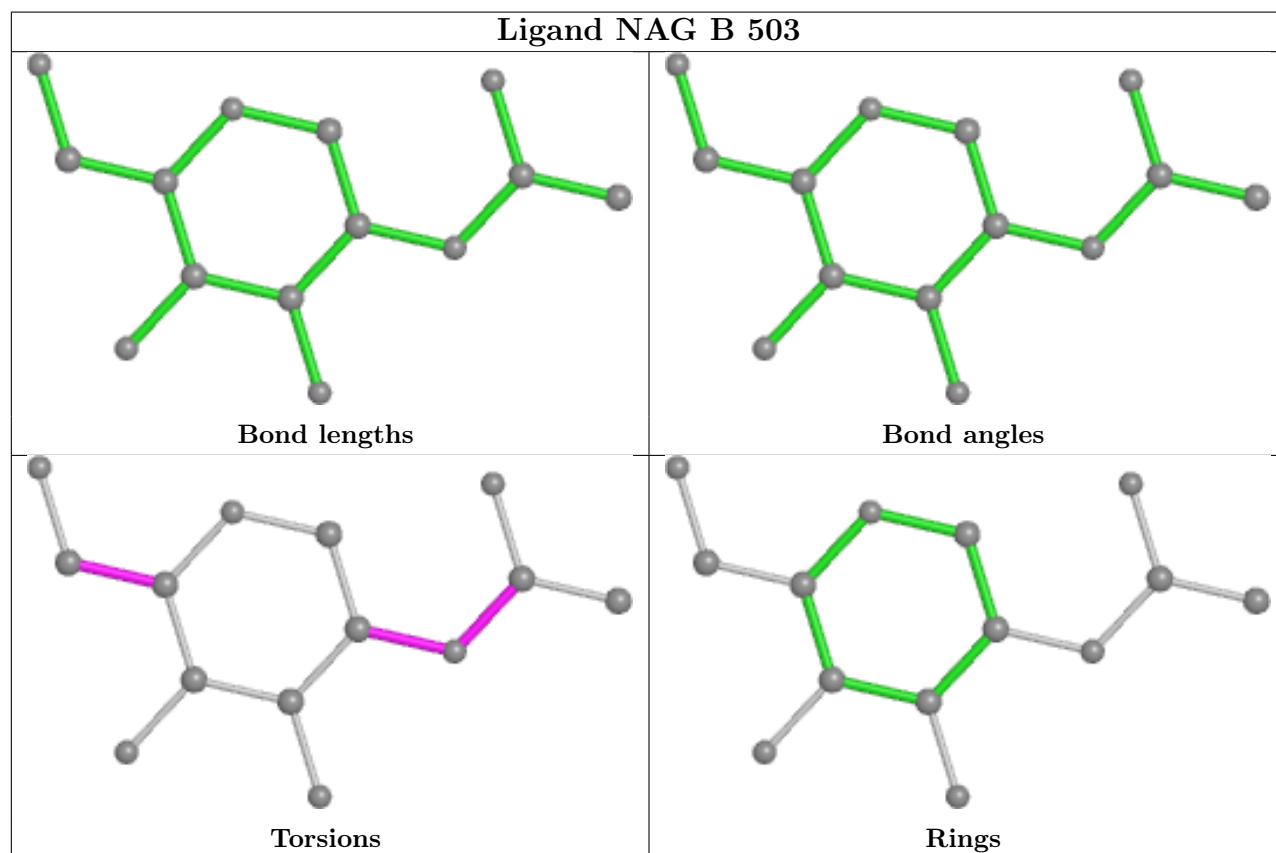
Mol	Chain	Res	Type	Atoms
3	E	501	NAG	O7-C7-N2-C2
3	D	501	NAG	O5-C5-C6-O6
3	B	503	NAG	C1-C2-N2-C7
8	A	501	GLY	OXT-C-CA-N
3	D	501	NAG	C4-C5-C6-O6
4	A	510	HEX	C2-C3-C4-C5
3	C	502	NAG	O5-C5-C6-O6
7	C	507	OCT	C4-C5-C6-C7
3	B	503	NAG	O5-C5-C6-O6
3	E	501	NAG	C4-C5-C6-O6
7	A	508	OCT	C2-C3-C4-C5
7	A	508	OCT	C3-C4-C5-C6
7	C	507	OCT	C1-C2-C3-C4
3	D	501	NAG	C1-C2-N2-C7
7	A	508	OCT	C5-C6-C7-C8
7	A	508	OCT	C4-C5-C6-C7
3	D	501	NAG	C3-C2-N2-C7

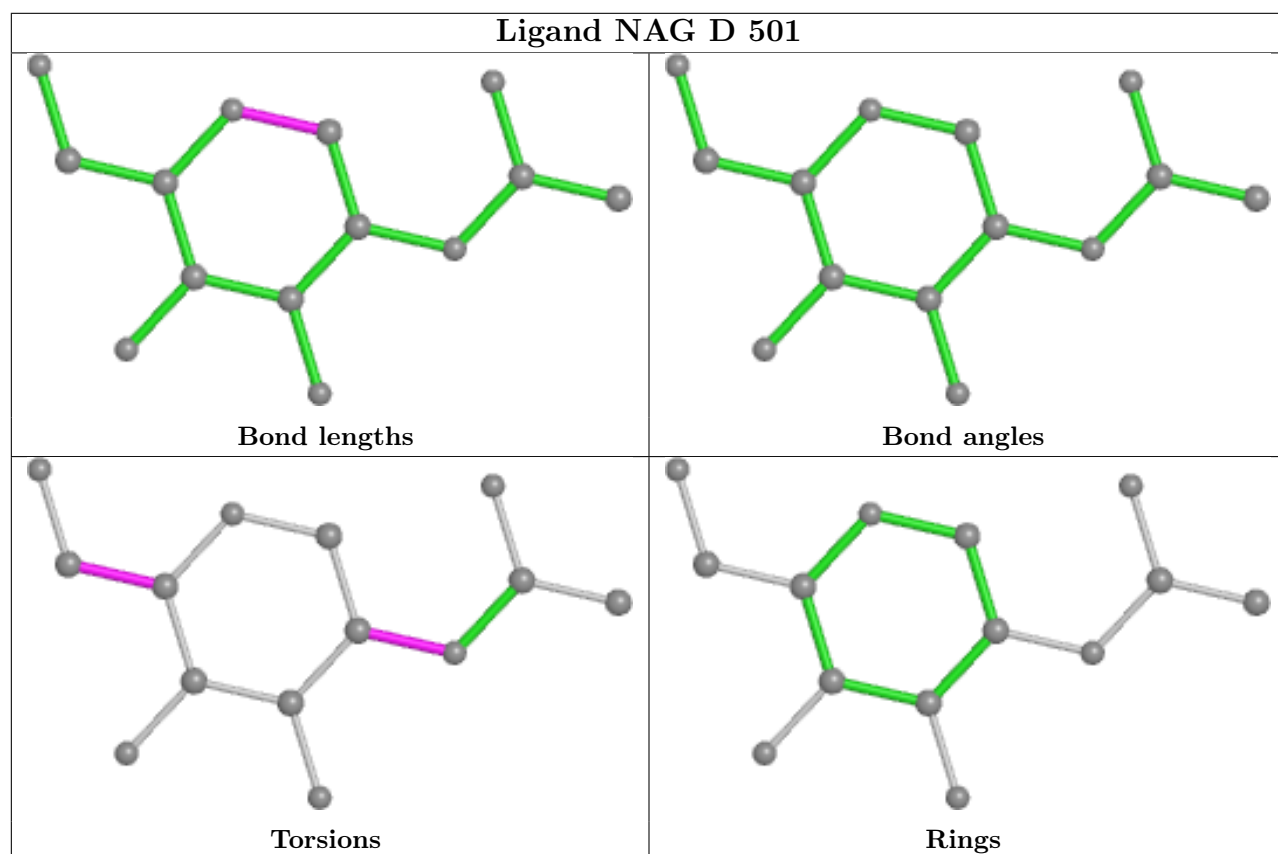
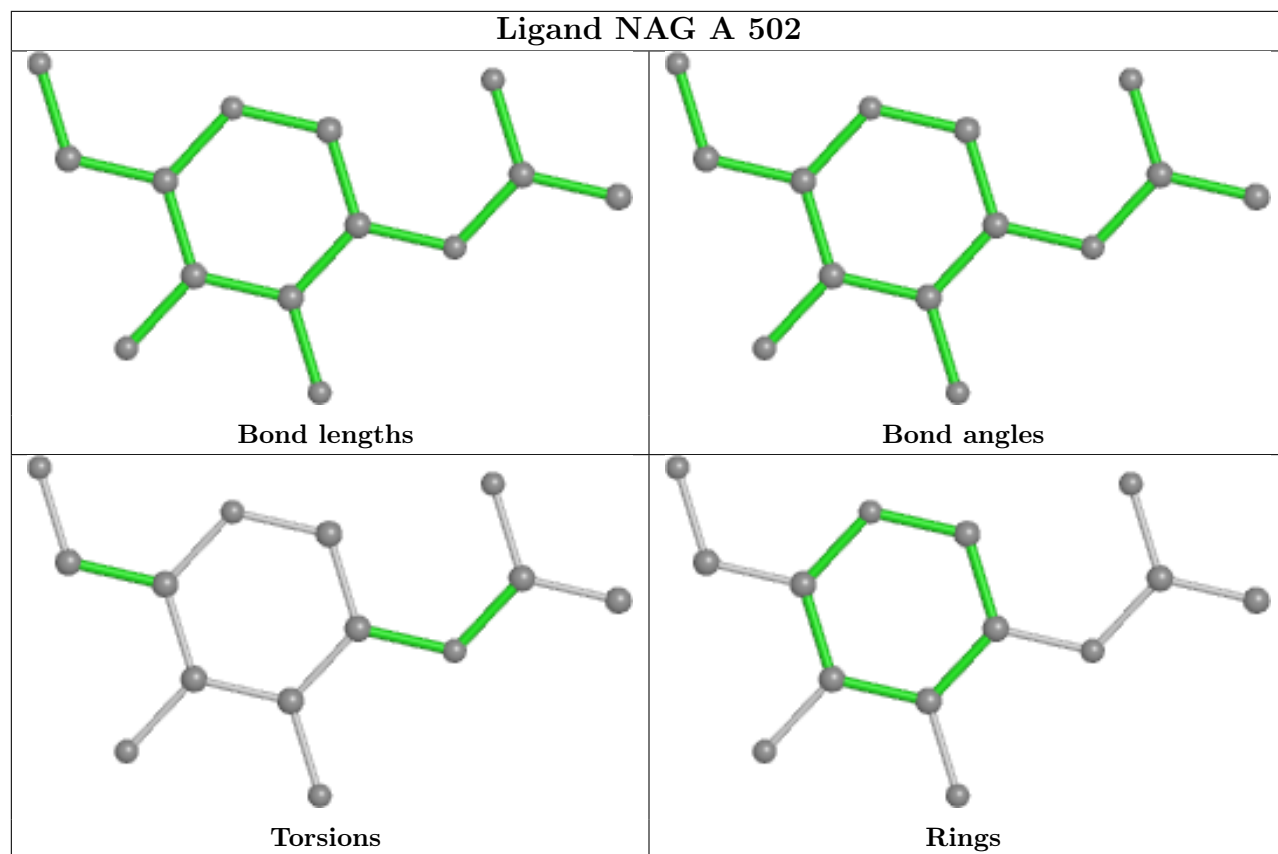
There are no ring outliers.

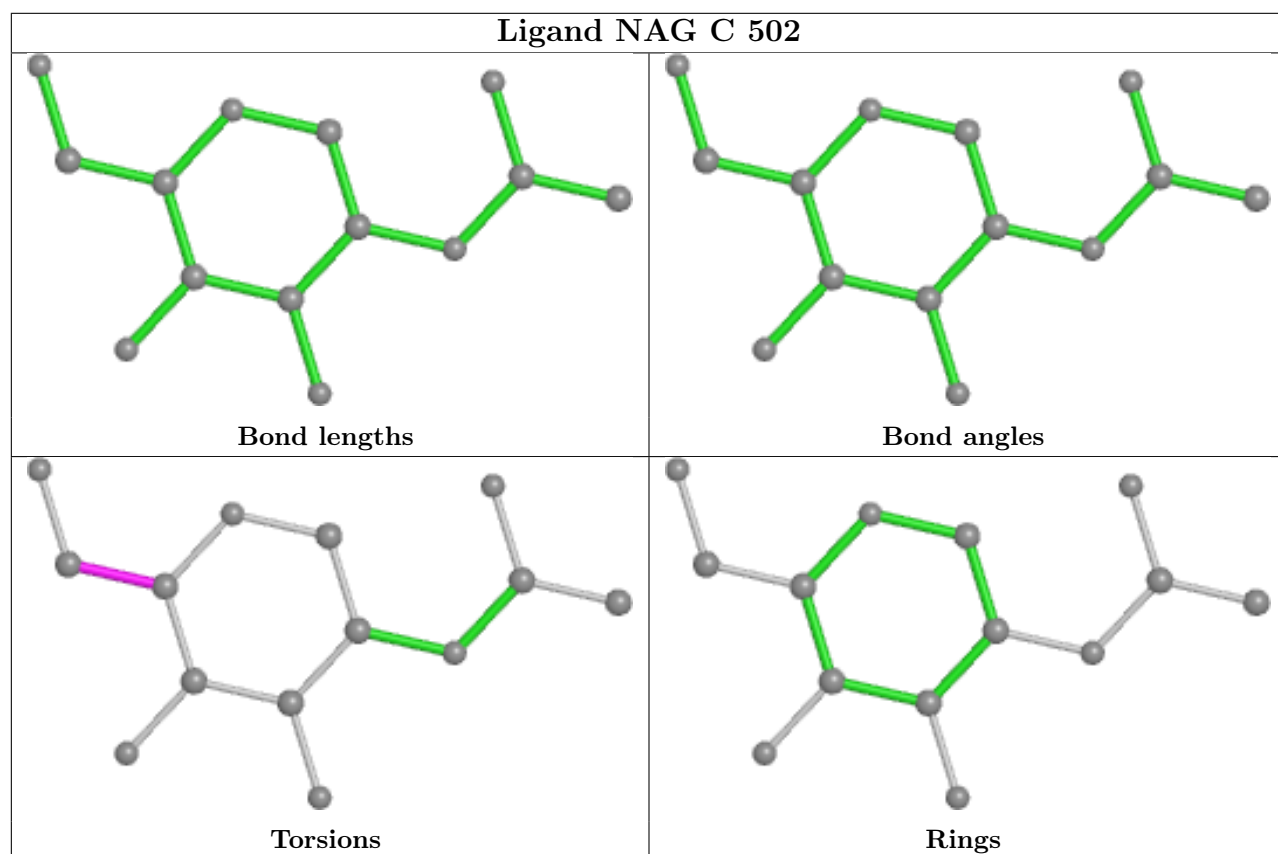
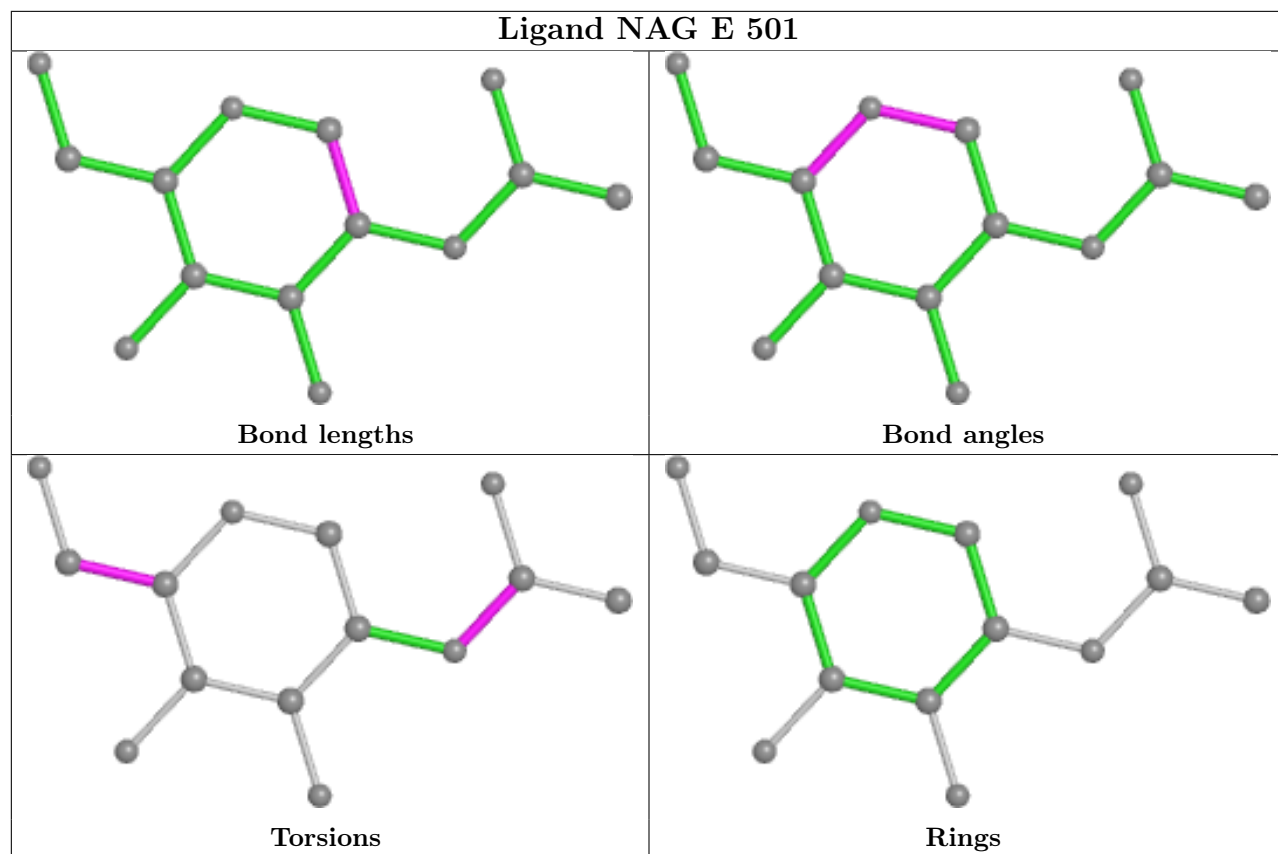
19 monomers are involved in 106 short contacts:

Mol	Chain	Res	Type	Clashes	Symm-Clashes
4	E	503	HEX	1	0
6	B	504	UND	6	0
5	C	503	HP6	5	0
4	D	505	HEX	3	0
4	A	510	HEX	2	0
7	E	507	OCT	10	0
6	A	504	UND	14	0
8	B	502	GLY	1	0
3	D	501	NAG	1	0
7	D	510	OCT	1	0
11	E	502	D10	1	0
4	A	509	HEX	6	0
8	C	501	GLY	7	0
8	A	501	GLY	5	0
4	B	506	HEX	2	0
4	A	503	HEX	4	0
7	A	508	OCT	1	0
7	A	507	OCT	19	0
6	D	507	UND	18	0

The following is a two-dimensional graphical depiction of Mogul quality analysis of bond lengths, bond angles, torsion angles, and ring geometry for all instances of the Ligand of Interest. In addition, ligands with molecular weight > 250 and outliers as shown on the validation Tables will also be included. For torsion angles, if less than 5% of the Mogul distribution of torsion angles is within 10 degrees of the torsion angle in question, then that torsion angle is considered an outlier. Any bond that is central to one or more torsion angles identified as an outlier by Mogul will be highlighted in the graph. For rings, the root-mean-square deviation (RMSD) between the ring in question and similar rings identified by Mogul is calculated over all ring torsion angles. If the average RMSD is greater than 60 degrees and the minimal RMSD between the ring in question and any Mogul-identified rings is also greater than 60 degrees, then that ring is considered an outlier. The outliers are highlighted in purple. The color gray indicates Mogul did not find sufficient equivalents in the CSD to analyse the geometry.







5.7 Other polymers [i](#)

There are no such residues in this entry.

5.8 Polymer linkage issues [i](#)

There are no chain breaks in this entry.

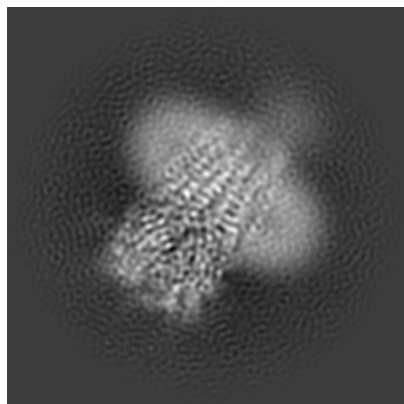
6 Map visualisation [i](#)

This section contains visualisations of the EMDB entry EMD-27552. These allow visual inspection of the internal detail of the map and identification of artifacts.

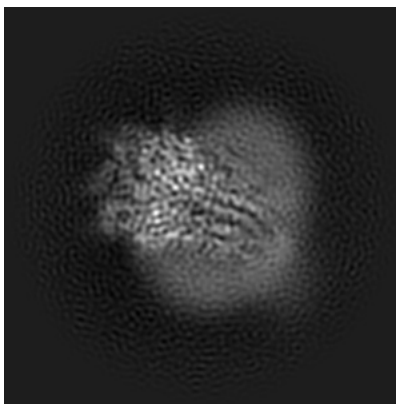
Images derived from a raw map, generated by summing the deposited half-maps, are presented below the corresponding image components of the primary map to allow further visual inspection and comparison with those of the primary map.

6.1 Orthogonal projections [i](#)

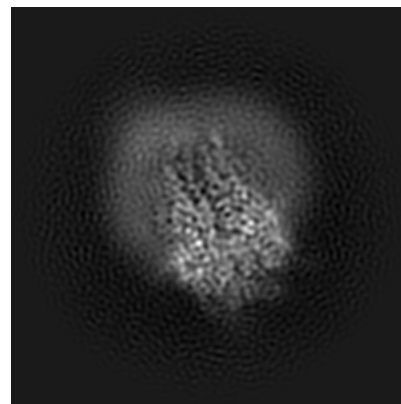
6.1.1 Primary map



X

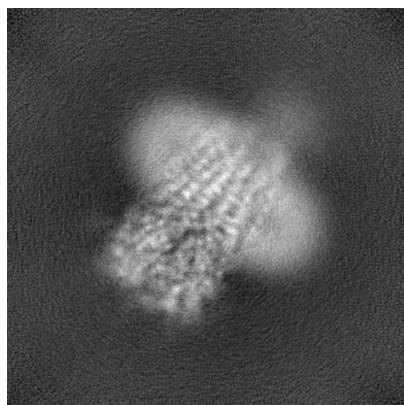


Y

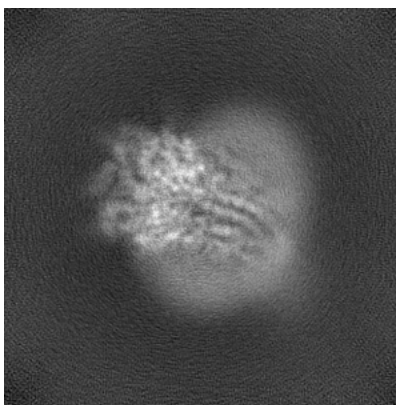


Z

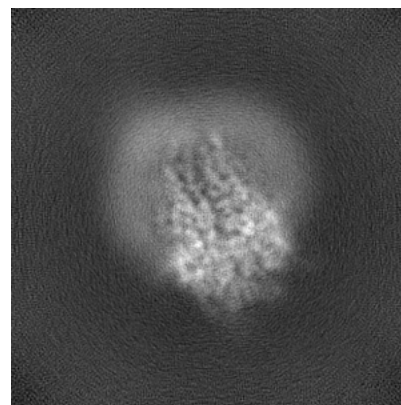
6.1.2 Raw map



X



Y

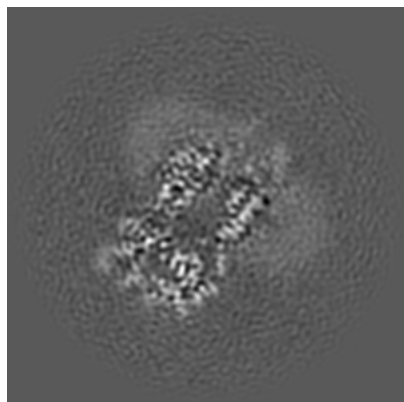


Z

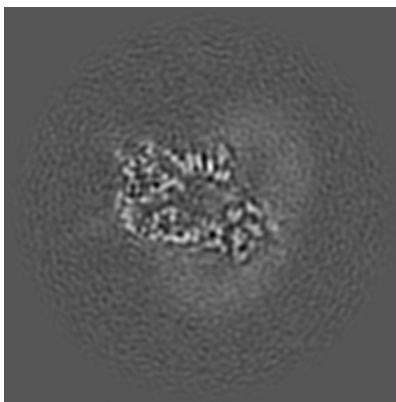
The images above show the map projected in three orthogonal directions.

6.2 Central slices [i](#)

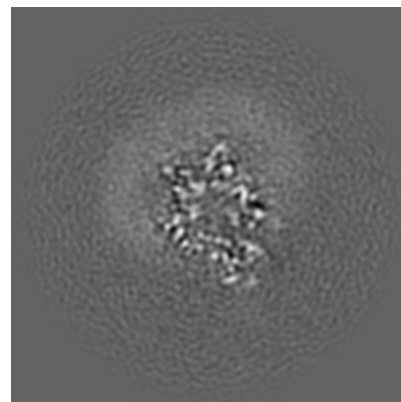
6.2.1 Primary map



X Index: 144

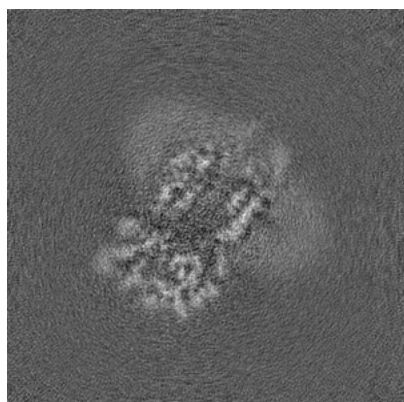


Y Index: 144

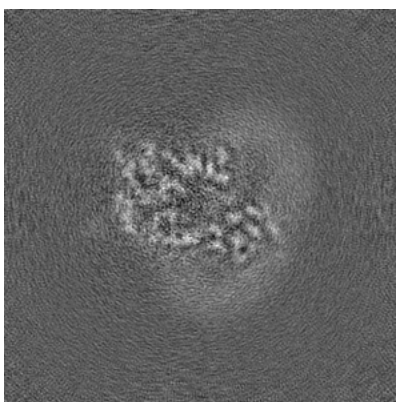


Z Index: 144

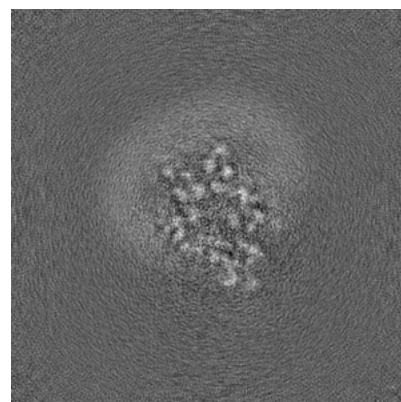
6.2.2 Raw map



X Index: 144



Y Index: 144

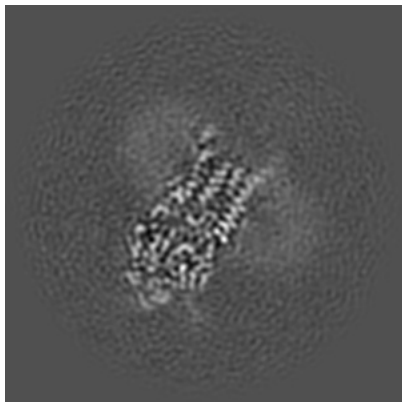


Z Index: 144

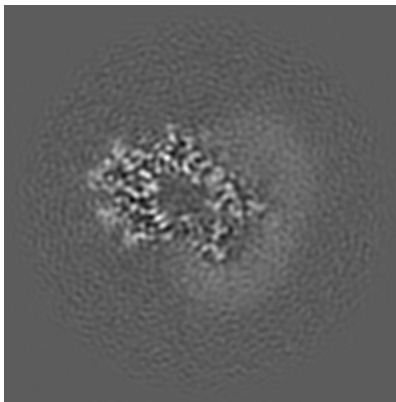
The images above show central slices of the map in three orthogonal directions.

6.3 Largest variance slices [i](#)

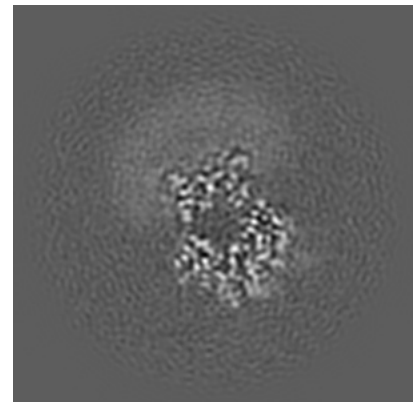
6.3.1 Primary map



X Index: 128

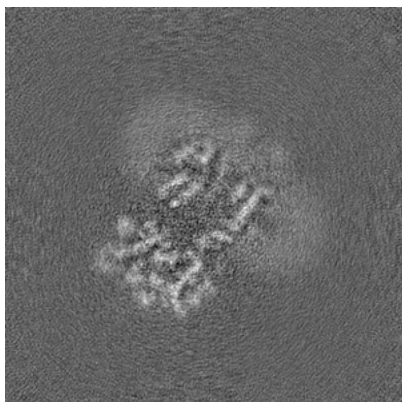


Y Index: 130

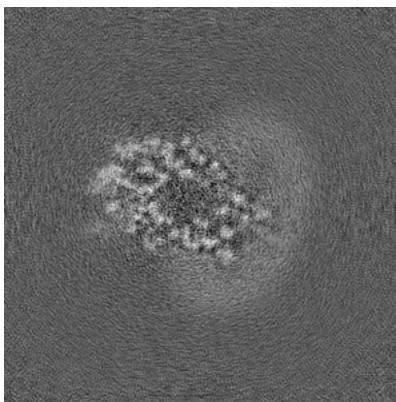


Z Index: 122

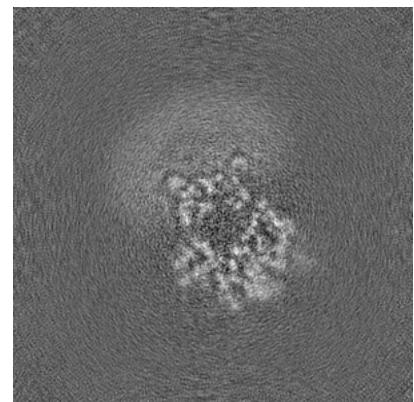
6.3.2 Raw map



X Index: 142



Y Index: 136

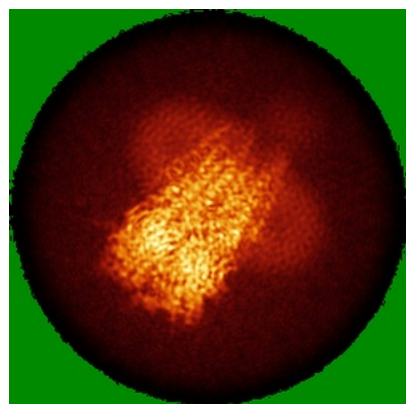


Z Index: 121

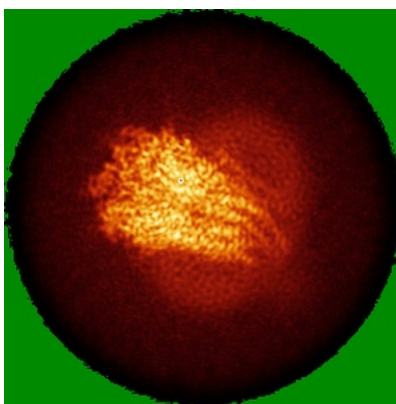
The images above show the largest variance slices of the map in three orthogonal directions.

6.4 Orthogonal standard-deviation projections (False-color) [i](#)

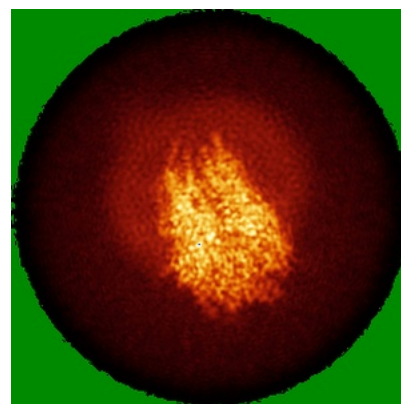
6.4.1 Primary map



X

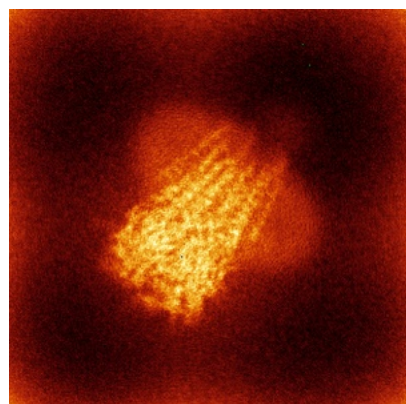


Y

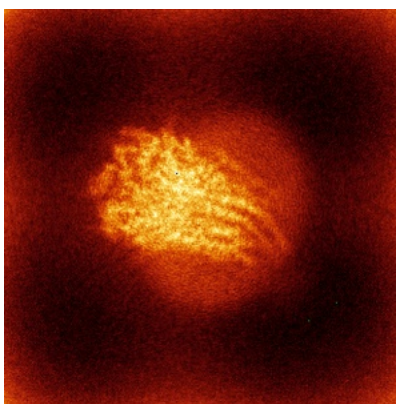


Z

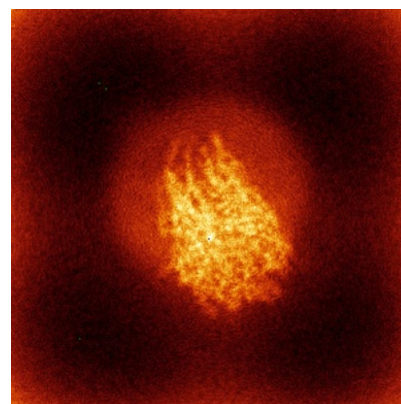
6.4.2 Raw map



X



Y

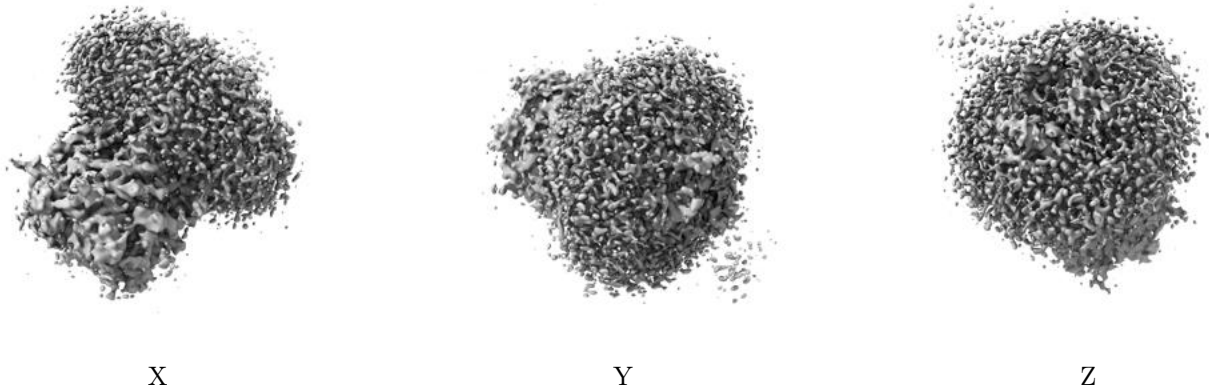


Z

The images above show the map standard deviation projections with false color in three orthogonal directions. Minimum values are shown in green, max in blue, and dark to light orange shades represent small to large values respectively.

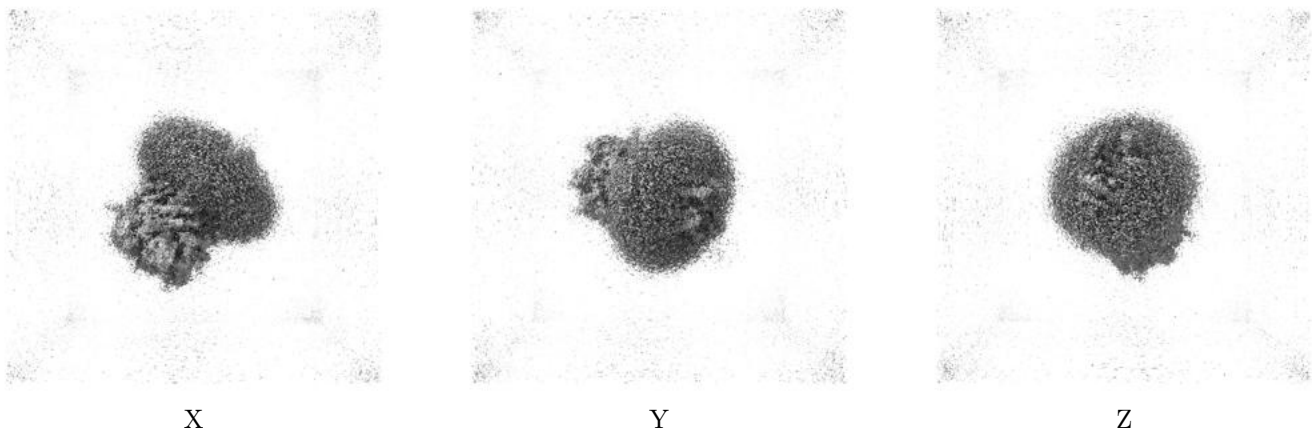
6.5 Orthogonal surface views [i](#)

6.5.1 Primary map



The images above show the 3D surface view of the map at the recommended contour level 0.25. These images, in conjunction with the slice images, may facilitate assessment of whether an appropriate contour level has been provided.

6.5.2 Raw map



These images show the 3D surface of the raw map. The raw map's contour level was selected so that its surface encloses the same volume as the primary map does at its recommended contour level.

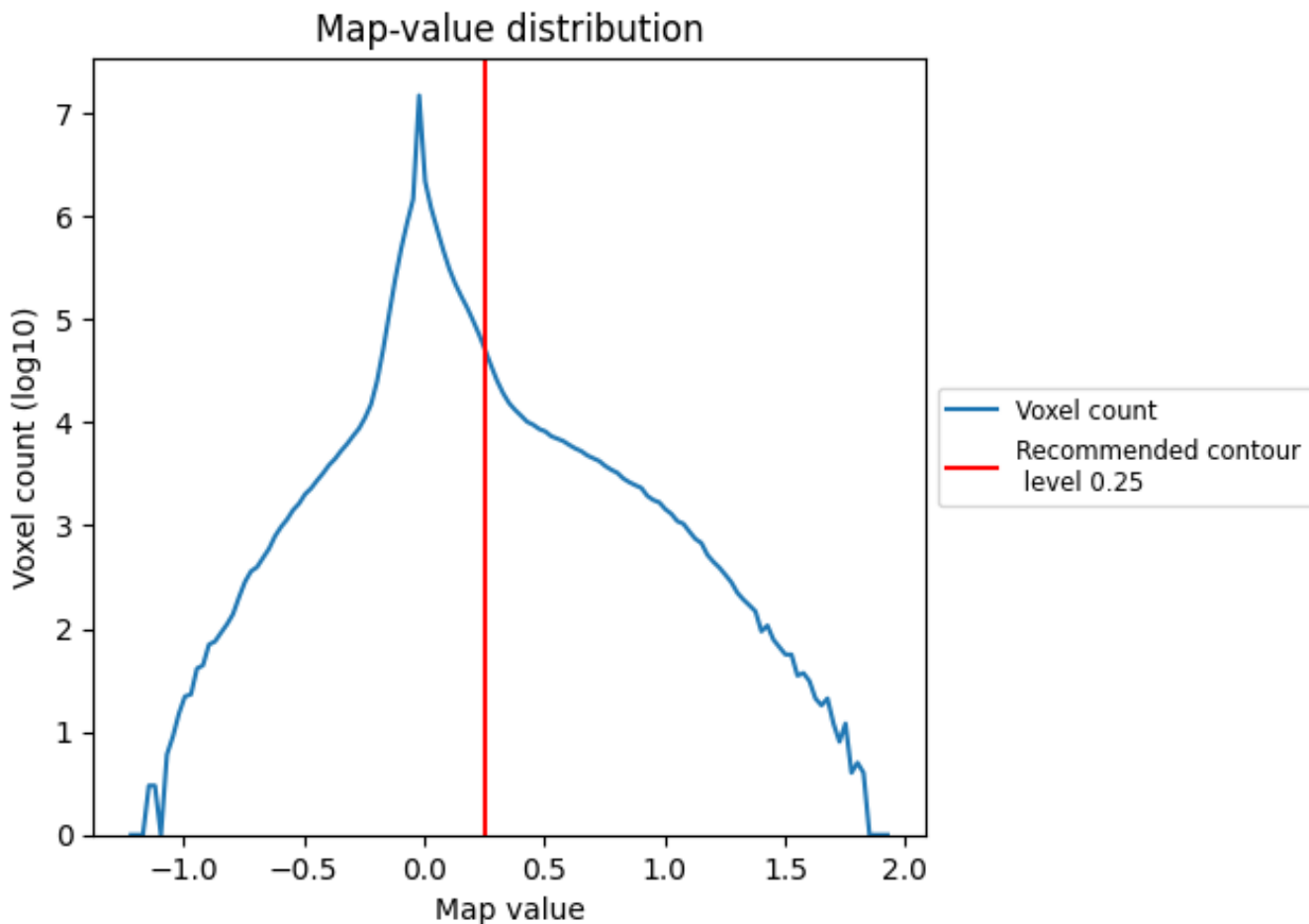
6.6 Mask visualisation [i](#)

This section was not generated. No masks/segmentation were deposited.

7 Map analysis [i](#)

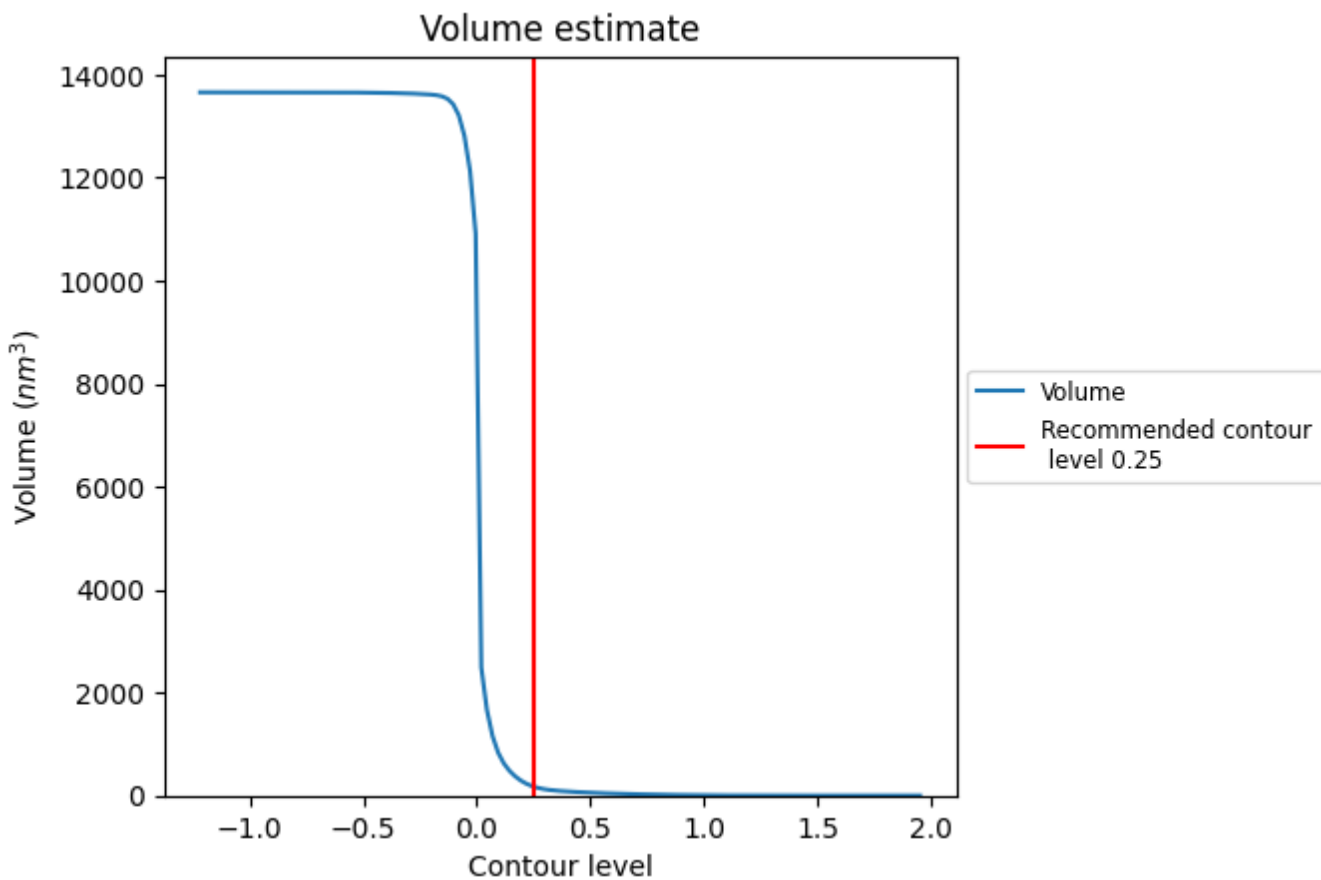
This section contains the results of statistical analysis of the map.

7.1 Map-value distribution [i](#)



The map-value distribution is plotted in 128 intervals along the x-axis. The y-axis is logarithmic. A spike in this graph at zero usually indicates that the volume has been masked.

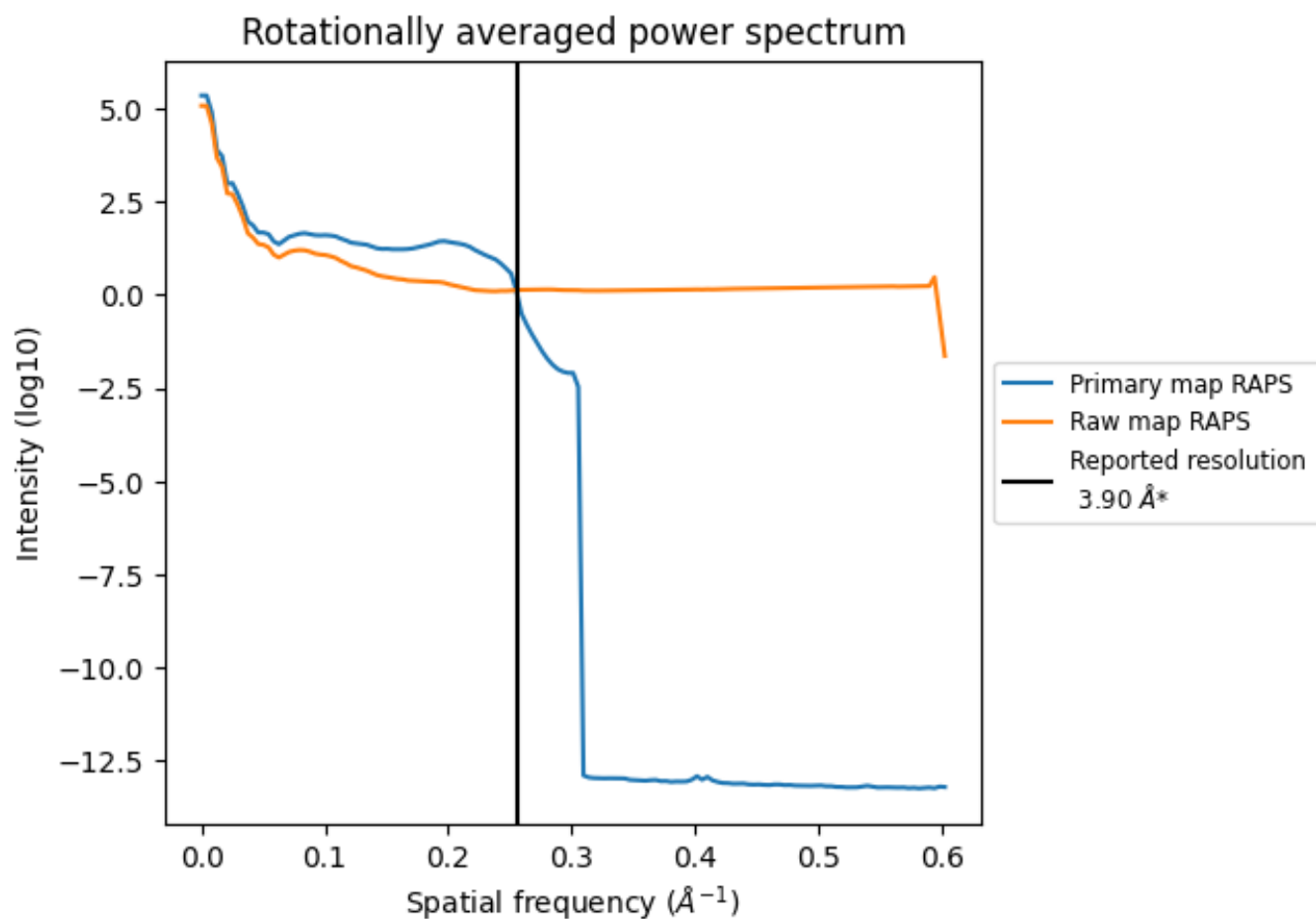
7.2 Volume estimate [i](#)



The volume at the recommended contour level is 175 nm³; this corresponds to an approximate mass of 158 kDa.

The volume estimate graph shows how the enclosed volume varies with the contour level. The recommended contour level is shown as a vertical line and the intersection between the line and the curve gives the volume of the enclosed surface at the given level.

7.3 Rotationally averaged power spectrum [i](#)

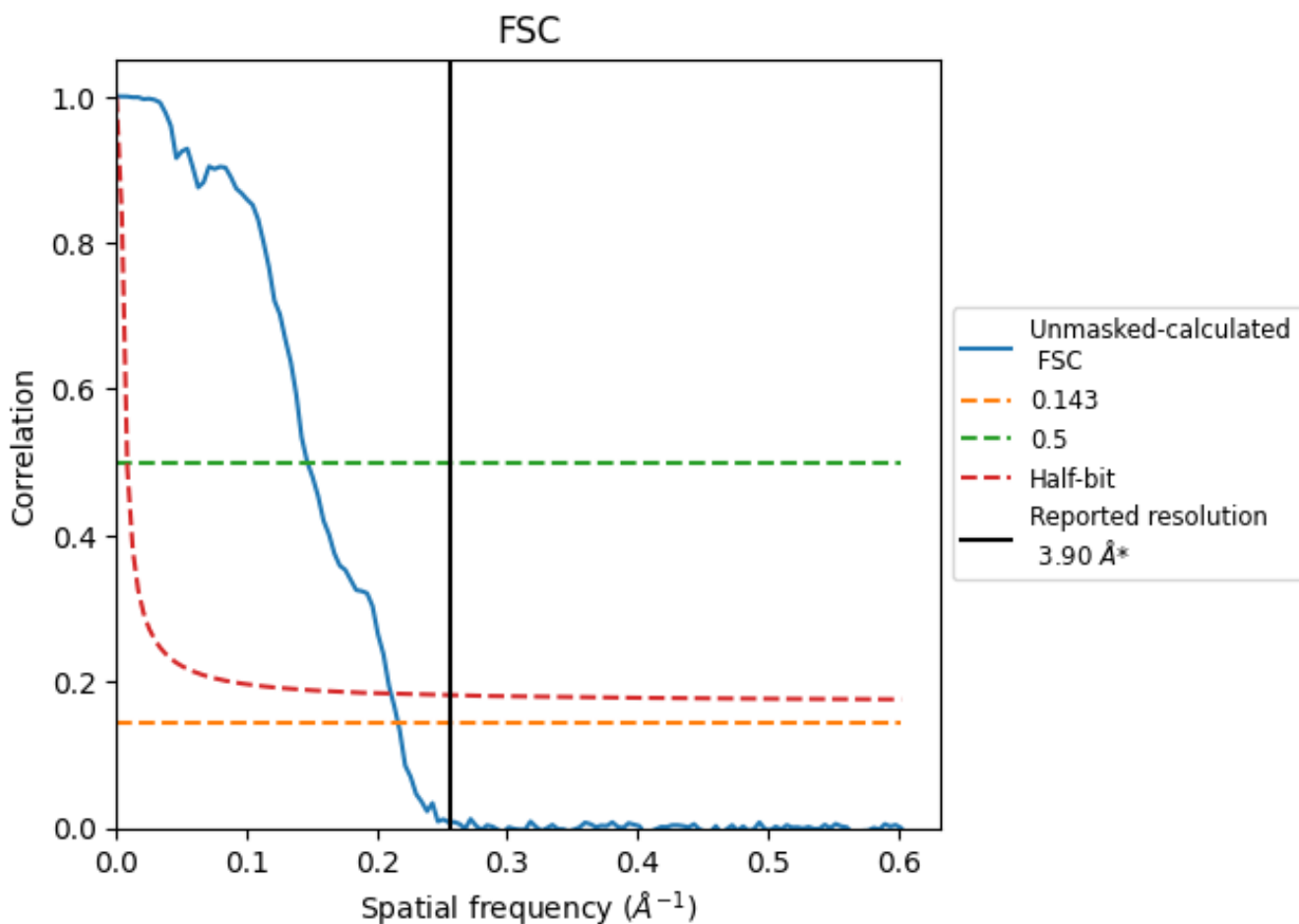


*Reported resolution corresponds to spatial frequency of 0.256 Å⁻¹

8 Fourier-Shell correlation [i](#)

Fourier-Shell Correlation (FSC) is the most commonly used method to estimate the resolution of single-particle and subtomogram-averaged maps. The shape of the curve depends on the imposed symmetry, mask and whether or not the two 3D reconstructions used were processed from a common reference. The reported resolution is shown as a black line. A curve is displayed for the half-bit criterion in addition to lines showing the 0.143 gold standard cut-off and 0.5 cut-off.

8.1 FSC [i](#)



*Reported resolution corresponds to spatial frequency of 0.256 Å⁻¹

8.2 Resolution estimates [i](#)

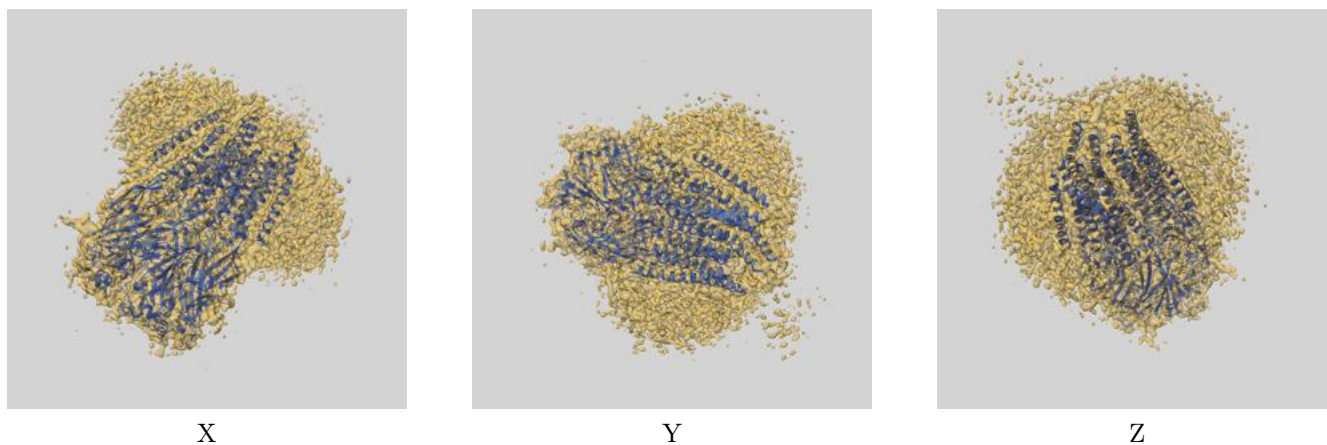
Resolution estimate (Å)	Estimation criterion (FSC cut-off)		
	0.143	0.5	Half-bit
Reported by author	3.90	-	-
Author-provided FSC curve	-	-	-
Unmasked-calculated*	4.62	6.83	4.74

*Resolution estimate based on FSC curve calculated by comparison of deposited half-maps. The value from deposited half-maps intersecting FSC 0.143 CUT-OFF 4.62 differs from the reported value 3.9 by more than 10 %

9 Map-model fit [i](#)

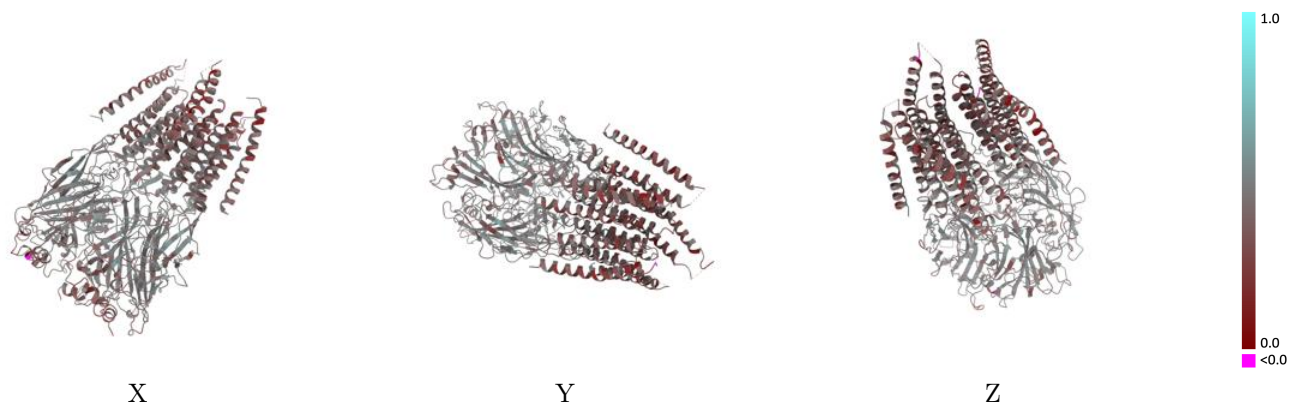
This section contains information regarding the fit between EMDB map EMD-27552 and PDB model 8DN2. Per-residue inclusion information can be found in section 3 on page 18.

9.1 Map-model overlay [i](#)



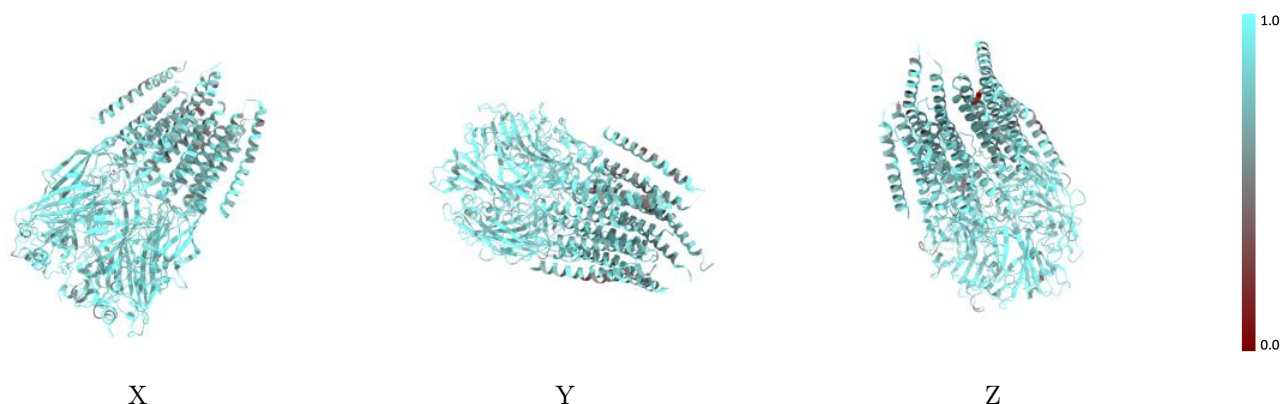
The images above show the 3D surface view of the map at the recommended contour level 0.25 at 50% transparency in yellow overlaid with a ribbon representation of the model coloured in blue. These images allow for the visual assessment of the quality of fit between the atomic model and the map.

9.2 Q-score mapped to coordinate model [\(i\)](#)



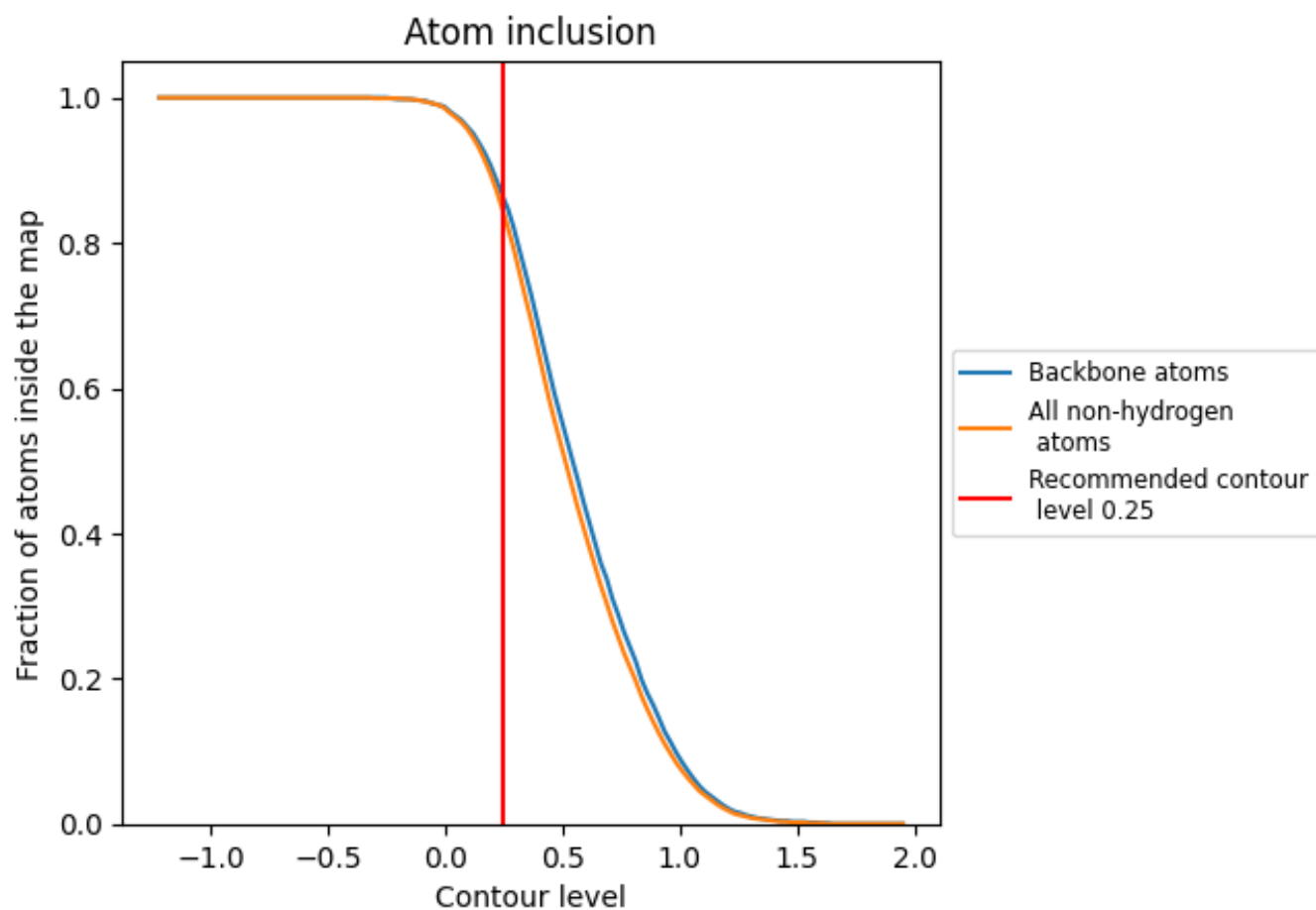
The images above show the model with each residue coloured according to its Q-score. This shows their resolvability in the map with higher Q-score values reflecting better resolvability. Please note: Q-score is calculating the resolvability of atoms, and thus high values are only expected at resolutions at which atoms can be resolved. Low Q-score values may therefore be expected for many entries.

9.3 Atom inclusion mapped to coordinate model [\(i\)](#)



The images above show the model with each residue coloured according to its atom inclusion. This shows to what extent they are inside the map at the recommended contour level (0.25).













9.4 Atom inclusion [i](#)



At the recommended contour level, 86% of all backbone atoms, 84% of all non-hydrogen atoms, are inside the map.

9.5 Map-model fit summary

The table lists the average atom inclusion at the recommended contour level (0.25) and Q-score for the entire model and for each chain.

Chain	Atom inclusion	Q-score
All	 0.8400	 0.4170
A	 0.8430	 0.4190
B	 0.8540	 0.4140
C	 0.8270	 0.4120
D	 0.8460	 0.4150
E	 0.8500	 0.4260

