



## wwPDB EM Validation Summary Report ⓘ

Oct 20, 2022 – 04:54 PM EDT

PDB ID : 8DMB  
EMDB ID : EMD-27533  
Title : Structure of Desulfovibrio thermocuniculi IsrB (DtIsrB) in complex with  
omega RNA and target DNA  
Authors : Seiichi, H.; Kappel, K.; Zhang, F.  
Deposited on : 2022-07-08  
Resolution : 3.10 Å(reported)

This is a wwPDB EM Validation Summary Report for a publicly released PDB entry.

We welcome your comments at [validation@mail.wwpdb.org](mailto:validation@mail.wwpdb.org)

A user guide is available at

<https://www.wwpdb.org/validation/2017/EMValidationReportHelp>

with specific help available everywhere you see the ⓘ symbol.

The types of validation reports are described at

<http://www.wwpdb.org/validation/2017/FAQs#types>.

---

The following versions of software and data (see [references ⓘ](#)) were used in the production of this report:

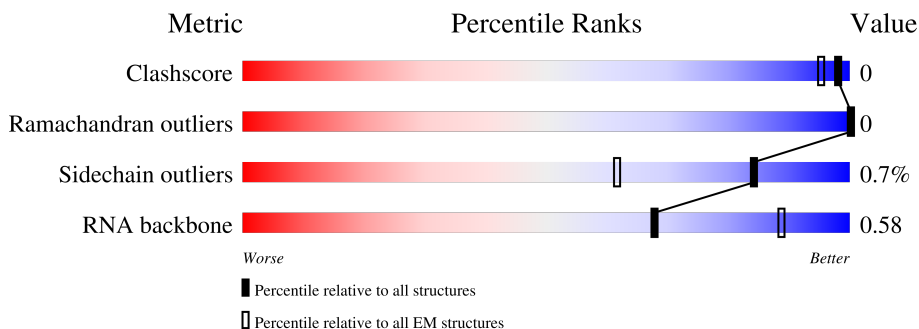
EMDB validation analysis : 0.0.1.dev43  
MolProbity : 4.02b-467  
Percentile statistics : 20191225.v01 (using entries in the PDB archive December 25th 2019)  
MapQ : 1.9.9  
Ideal geometry (proteins) : Engh & Huber (2001)  
Ideal geometry (DNA, RNA) : Parkinson et al. (1996)  
Validation Pipeline (wwPDB-VP) : 2.31.2

# 1 Overall quality at a glance i

The following experimental techniques were used to determine the structure:  
*ELECTRON MICROSCOPY*

The reported resolution of this entry is 3.10 Å.

Percentile scores (ranging between 0-100) for global validation metrics of the entry are shown in the following graphic. The table shows the number of entries on which the scores are based.



Metric	Whole archive (#Entries)	EM structures (#Entries)
Clashscore	158937	4297
Ramachandran outliers	154571	4023
Sidechain outliers	154315	3826
RNA backbone	4643	859

The table below summarises the geometric issues observed across the polymeric chains and their fit to the map. The red, orange, yellow and green segments of the bar indicate the fraction of residues that contain outliers for  $\geq 3$ , 2, 1 and 0 types of geometric quality criteria respectively. A grey segment represents the fraction of residues that are not modelled. The numeric value for each fraction is indicated below the corresponding segment, with a dot representing fractions  $\leq 5\%$ . The upper red bar (where present) indicates the fraction of residues that have poor fit to the EM map (all-atom inclusion  $< 40\%$ ). The numeric value is given above the bar.

Mol	Chain	Length	Quality of chain
1	P	741	
2	W	284	
3	X	31	
4	Y	10	

## 2 Entry composition

There are 5 unique types of molecules in this entry. The entry contains 14225 atoms, of which 5728 are hydrogens and 0 are deuteriums.

In the tables below, the AltConf column contains the number of residues with at least one atom in alternate conformation and the Trace column contains the number of residues modelled with at most 2 atoms.

- Molecule 1 is a protein called Ubiquitin-like protein SMT3,IsrB protein,monomeric super-folder Green Fluorescent Protein.

Mol	Chain	Residues	Atoms					AltConf	Trace	
			Total	C	H	N	O			S
1	P	328	5376	1675	2726	525	441	9	0	0

There are 52 discrepancies between the modelled and reference sequences:

Chain	Residue	Modelled	Actual	Comment	Reference
P	-149	MET	-	initiating methionine	UNP Q12306
P	-148	GLY	-	expression tag	UNP Q12306
P	-147	SER	-	expression tag	UNP Q12306
P	-146	SER	-	expression tag	UNP Q12306
P	-145	HIS	-	expression tag	UNP Q12306
P	-144	HIS	-	expression tag	UNP Q12306
P	-143	HIS	-	expression tag	UNP Q12306
P	-142	HIS	-	expression tag	UNP Q12306
P	-141	HIS	-	expression tag	UNP Q12306
P	-140	HIS	-	expression tag	UNP Q12306
P	-139	SER	-	expression tag	UNP Q12306
P	-138	SER	-	expression tag	UNP Q12306
P	-137	GLY	-	expression tag	UNP Q12306
P	-136	LEU	-	expression tag	UNP Q12306
P	-135	VAL	-	expression tag	UNP Q12306
P	-134	PRO	-	expression tag	UNP Q12306
P	-133	ARG	-	expression tag	UNP Q12306
P	-132	GLY	-	expression tag	UNP Q12306
P	-131	SER	-	expression tag	UNP Q12306
P	-130	HIS	-	expression tag	UNP Q12306
P	-129	MET	-	expression tag	UNP Q12306
P	-128	ALA	-	expression tag	UNP Q12306
P	-127	SER	-	expression tag	UNP Q12306
P	-126	TRP	-	expression tag	UNP Q12306
P	-125	SER	-	expression tag	UNP Q12306
P	-124	HIS	-	expression tag	UNP Q12306
P	-123	PRO	-	expression tag	UNP Q12306

*Continued on next page...*

Continued from previous page...

Chain	Residue	Modelled	Actual	Comment	Reference
P	-122	GLN	-	expression tag	UNP Q12306
P	-121	PHE	-	expression tag	UNP Q12306
P	-120	GLU	-	expression tag	UNP Q12306
P	-119	LYS	-	expression tag	UNP Q12306
P	-118	GLY	-	expression tag	UNP Q12306
P	-117	GLY	-	expression tag	UNP Q12306
P	-116	GLY	-	expression tag	UNP Q12306
P	-115	SER	-	expression tag	UNP Q12306
P	-114	GLY	-	expression tag	UNP Q12306
P	-113	GLY	-	expression tag	UNP Q12306
P	-112	GLY	-	expression tag	UNP Q12306
P	-111	SER	-	expression tag	UNP Q12306
P	-110	GLY	-	expression tag	UNP Q12306
P	-109	GLY	-	expression tag	UNP Q12306
P	-108	SER	-	expression tag	UNP Q12306
P	-107	ALA	-	expression tag	UNP Q12306
P	-106	TRP	-	expression tag	UNP Q12306
P	-105	SER	-	expression tag	UNP Q12306
P	-104	HIS	-	expression tag	UNP Q12306
P	-103	PRO	-	expression tag	UNP Q12306
P	-102	GLN	-	expression tag	UNP Q12306
P	-101	PHE	-	expression tag	UNP Q12306
P	-100	GLU	-	expression tag	UNP Q12306
P	-99	LYS	-	expression tag	UNP Q12306
P	0	SER	-	linker	UNP Q12306

- Molecule 2 is a RNA chain called omega RNA.

Mol	Chain	Residues	Atoms						AltConf	Trace
			Total	C	H	N	O	P		
2	W	237	7634	2253	2571	914	1659	237	0	0

- Molecule 3 is a DNA chain called target DNA.

Mol	Chain	Residues	Atoms						AltConf	Trace
			Total	C	H	N	O	P		
3	X	28	893	276	315	111	163	28	0	0

- Molecule 4 is a DNA chain called non-target DNA.

Mol	Chain	Residues	Atoms					AltConf	Trace	
			Total	C	H	N	O			P
4	Y	10	320	99	116	36	60	9	0	0

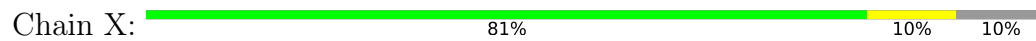
- Molecule 5 is MAGNESIUM ION (three-letter code: MG) (formula: Mg) (labeled as "Ligand of Interest" by depositor).

Mol	Chain	Residues	Atoms		AltConf
5	W	2	Total	Mg	0
			2	2	

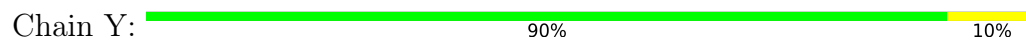




- Molecule 3: target DNA



- Molecule 4: non-target DNA



## 4 Experimental information

Property	Value	Source
EM reconstruction method	SINGLE PARTICLE	Depositor
Imposed symmetry	POINT, Not provided	
Number of particles used	58188	Depositor
Resolution determination method	FSC 0.143 CUT-OFF	Depositor
CTF correction method	NONE	Depositor
Microscope	FEI TITAN KRIOS	Depositor
Voltage (kV)	300	Depositor
Electron dose ( $e^-/\text{\AA}^2$ )	1.2	Depositor
Minimum defocus (nm)	800	Depositor
Maximum defocus (nm)	2200	Depositor
Magnification	Not provided	
Image detector	GATAN K3 (6k x 4k)	Depositor
Maximum map value	0.154	Depositor
Minimum map value	-0.075	Depositor
Average map value	0.000	Depositor
Map value standard deviation	0.006	Depositor
Recommended contour level	0.02	Depositor
Map size ( $\text{\AA}$ )	201.34401, 201.34401, 201.34401	wwPDB
Map dimensions	176, 176, 176	wwPDB
Map angles ( $^\circ$ )	90.0, 90.0, 90.0	wwPDB
Pixel spacing ( $\text{\AA}$ )	1.144, 1.144, 1.144	Depositor



## 5 Model quality [i](#)

### 5.1 Standard geometry [i](#)

Bond lengths and bond angles in the following residue types are not validated in this section: MG

The Z score for a bond length (or angle) is the number of standard deviations the observed value is removed from the expected value. A bond length (or angle) with  $|Z| > 5$  is considered an outlier worth inspection. RMSZ is the root-mean-square of all Z scores of the bond lengths (or angles).

Mol	Chain	Bond lengths		Bond angles	
		RMSZ	# Z  >5	RMSZ	# Z  >5
1	P	0.31	0/2709	0.79	0/3652
2	W	0.35	0/5652	1.05	7/8804 (0.1%)
3	X	0.72	0/650	1.18	4/1001 (0.4%)
4	Y	1.00	0/228	1.17	1/351 (0.3%)
All	All	0.40	0/9239	1.00	12/13808 (0.1%)

Chiral center outliers are detected by calculating the chiral volume of a chiral center and verifying if the center is modelled as a planar moiety or with the opposite hand. A planarity outlier is detected by checking planarity of atoms in a peptide group, atoms in a mainchain group or atoms of a sidechain that are expected to be planar.

Mol	Chain	#Chirality outliers	#Planarity outliers
1	P	0	1

There are no bond length outliers.

The worst 5 of 12 bond angle outliers are listed below:

Mol	Chain	Res	Type	Atoms	Z	Observed(°)	Ideal(°)
3	X	3	DT	O4'-C1'-N1	6.92	112.84	108.00
3	X	28	DA	O4'-C4'-C3'	-6.91	101.74	104.50
4	Y	2	DT	P-O3'-C3'	6.12	127.05	119.70
3	X	14	DG	O4'-C1'-N9	6.01	112.20	108.00
2	W	20	C	C6-N1-C2	-5.79	117.98	120.30

There are no chirality outliers.

All (1) planarity outliers are listed below:

Mol	Chain	Res	Type	Group
1	P	108	ARG	Sidechain

## 5.2 Too-close contacts [i](#)

In the following table, the Non-H and H(model) columns list the number of non-hydrogen atoms and hydrogen atoms in the chain respectively. The H(added) column lists the number of hydrogen atoms added and optimized by MolProbity. The Clashes column lists the number of clashes within the asymmetric unit, whereas Symm-Clashes lists symmetry-related clashes.

Mol	Chain	Non-H	H(model)	H(added)	Clashes	Symm-Clashes
1	P	2650	2726	2724	2	0
2	W	5063	2571	2575	3	0
3	X	578	315	316	0	0
4	Y	204	116	116	0	0
5	W	2	0	0	0	0
All	All	8497	5728	5731	4	0

The all-atom clashscore is defined as the number of clashes found per 1000 atoms (including hydrogen atoms). The all-atom clashscore for this structure is 0.

All (4) close contacts within the same asymmetric unit are listed below, sorted by their clash magnitude.

Atom-1	Atom-2	Interatomic distance (Å)	Clash overlap (Å)
2:W:152:A:O2'	2:W:154:U:OP2	2.17	0.62
1:P:24:ARG:NH2	2:W:269:G:OP2	2.43	0.51
2:W:180:A:N6	2:W:182:C:OP1	2.52	0.42
1:P:304:CYS:N	1:P:315:GLY:O	2.53	0.41

There are no symmetry-related clashes.

## 5.3 Torsion angles [i](#)

### 5.3.1 Protein backbone [i](#)

In the following table, the Percentiles column shows the percent Ramachandran outliers of the chain as a percentile score with respect to all PDB entries followed by that with respect to all EM entries.

The Analysed column shows the number of residues for which the backbone conformation was analysed, and the total number of residues.

Mol	Chain	Analysed	Favoured	Allowed	Outliers	Percentiles
1	P	324/741 (44%)	316 (98%)	8 (2%)	0	<b>100</b> <b>100</b>

There are no Ramachandran outliers to report.

### 5.3.2 Protein sidechains [i](#)

In the following table, the Percentiles column shows the percent sidechain outliers of the chain as a percentile score with respect to all PDB entries followed by that with respect to all EM entries.

The Analysed column shows the number of residues for which the sidechain conformation was analysed, and the total number of residues.

Mol	Chain	Analysed	Rotameric	Outliers	Percentiles
1	P	270/631 (43%)	268 (99%)	2 (1%)	84 93

All (2) residues with a non-rotameric sidechain are listed below:

Mol	Chain	Res	Type
1	P	24	ARG
1	P	95	ARG

Sometimes sidechains can be flipped to improve hydrogen bonding and reduce clashes. There are no such sidechains identified.

### 5.3.3 RNA [i](#)

Mol	Chain	Analysed	Backbone Outliers	Pucker Outliers
2	W	232/284 (81%)	30 (12%)	4 (1%)

5 of 30 RNA backbone outliers are listed below:

Mol	Chain	Res	Type
2	W	95	C
2	W	96	A
2	W	99	U
2	W	107	C
2	W	109	G

All (4) RNA pucker outliers are listed below:

Mol	Chain	Res	Type
2	W	19	U
2	W	145	A
2	W	182	C
2	W	256	C

## 5.4 Non-standard residues in protein, DNA, RNA chains [i](#)

There are no non-standard protein/DNA/RNA residues in this entry.

## 5.5 Carbohydrates [i](#)

There are no monosaccharides in this entry.

## 5.6 Ligand geometry [i](#)

Of 2 ligands modelled in this entry, 2 are monoatomic - leaving 0 for Mogul analysis.

There are no bond length outliers.

There are no bond angle outliers.

There are no chirality outliers.

There are no torsion outliers.

There are no ring outliers.

No monomer is involved in short contacts.

## 5.7 Other polymers [i](#)

There are no such residues in this entry.

## 5.8 Polymer linkage issues [i](#)

There are no chain breaks in this entry.

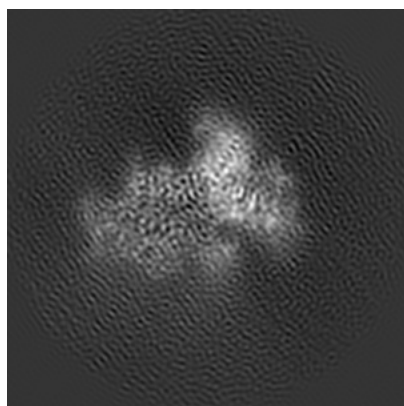
## 6 Map visualisation [i](#)

This section contains visualisations of the EMDB entry EMD-27533. These allow visual inspection of the internal detail of the map and identification of artifacts.

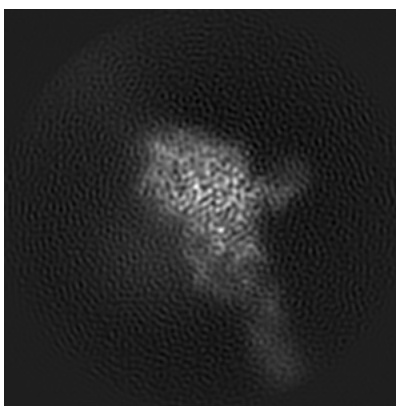
Images derived from a raw map, generated by summing the deposited half-maps, are presented below the corresponding image components of the primary map to allow further visual inspection and comparison with those of the primary map.

### 6.1 Orthogonal projections [i](#)

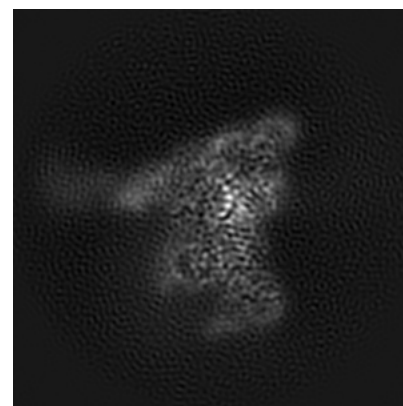
#### 6.1.1 Primary map



X

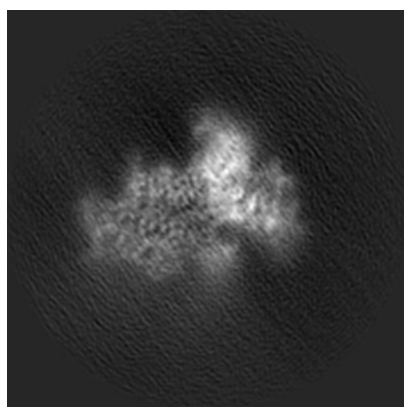


Y

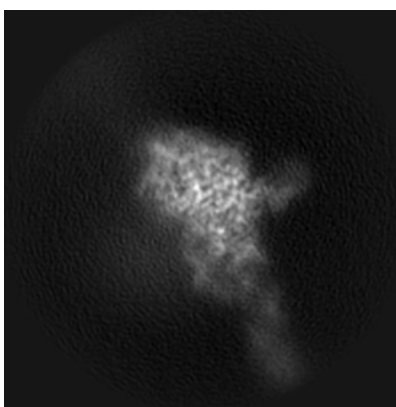


Z

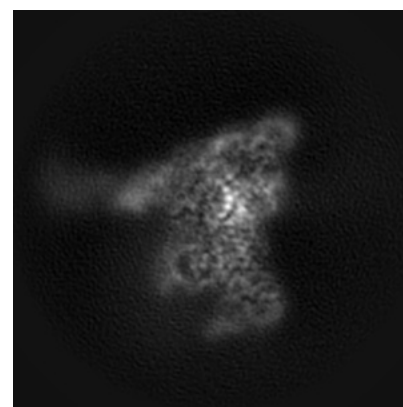
#### 6.1.2 Raw map



X



Y

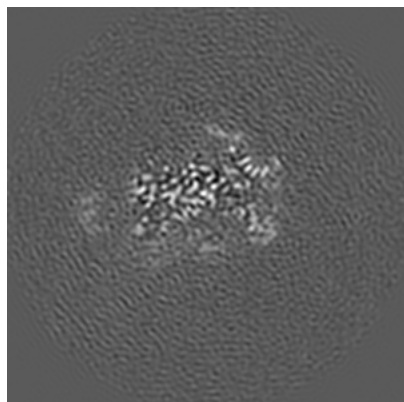


Z

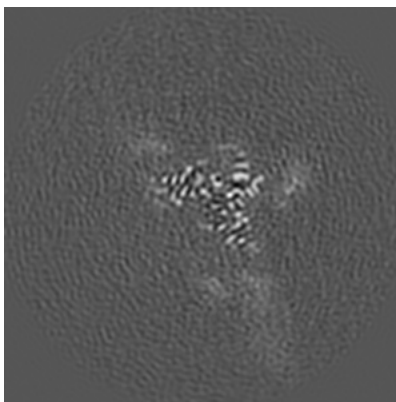
The images above show the map projected in three orthogonal directions.

## 6.2 Central slices [i](#)

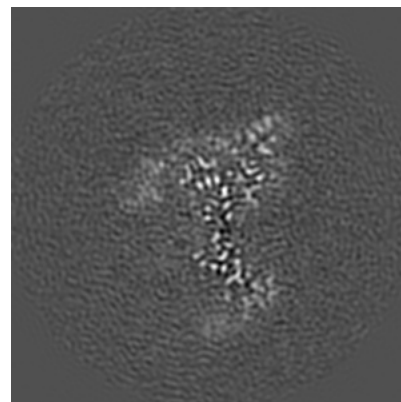
### 6.2.1 Primary map



X Index: 88

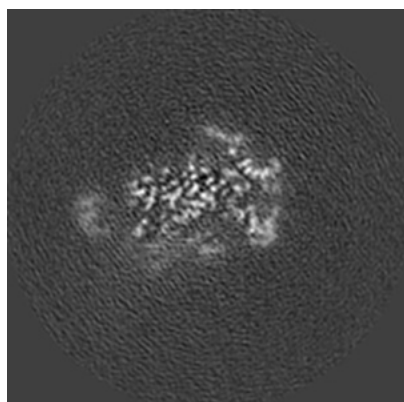


Y Index: 88

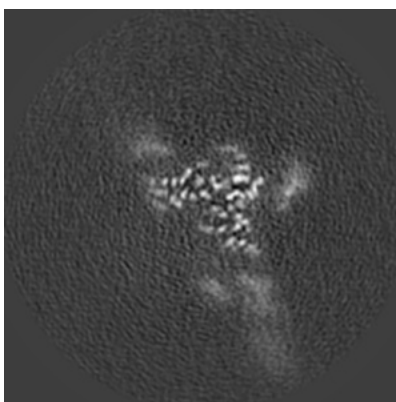


Z Index: 88

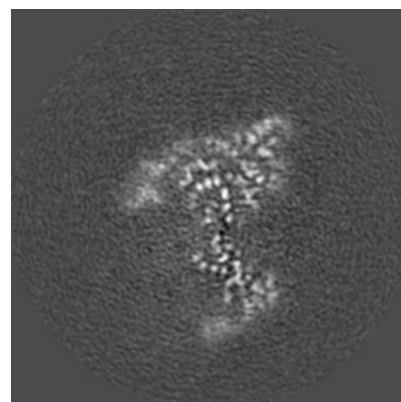
### 6.2.2 Raw map



X Index: 88



Y Index: 88

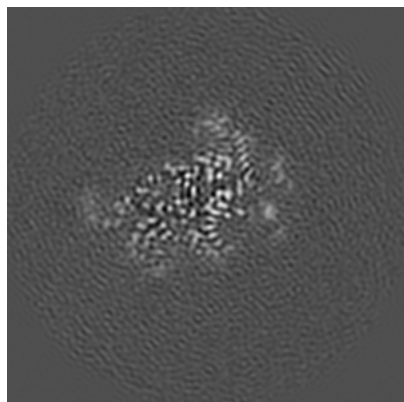


Z Index: 88

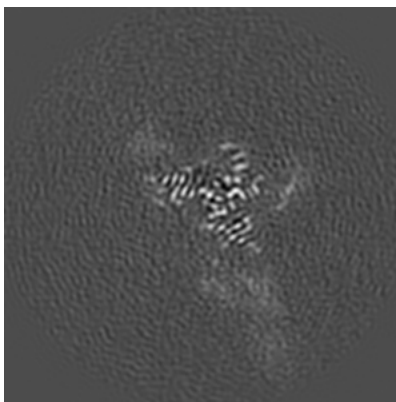
The images above show central slices of the map in three orthogonal directions.

## 6.3 Largest variance slices [i](#)

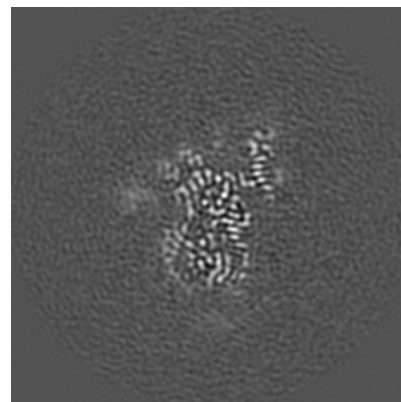
### 6.3.1 Primary map



X Index: 94

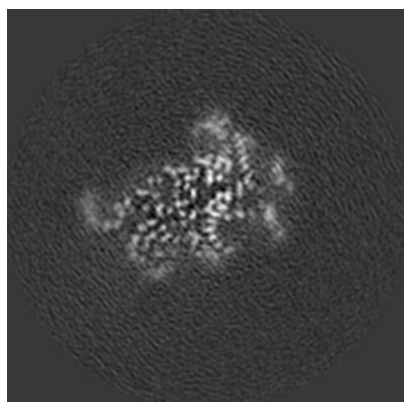


Y Index: 89

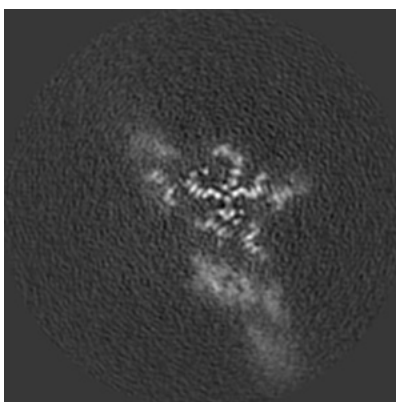


Z Index: 94

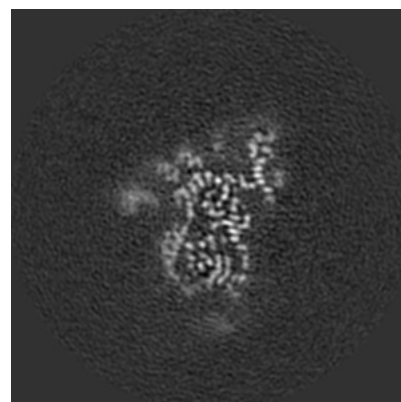
### 6.3.2 Raw map



X Index: 94



Y Index: 93

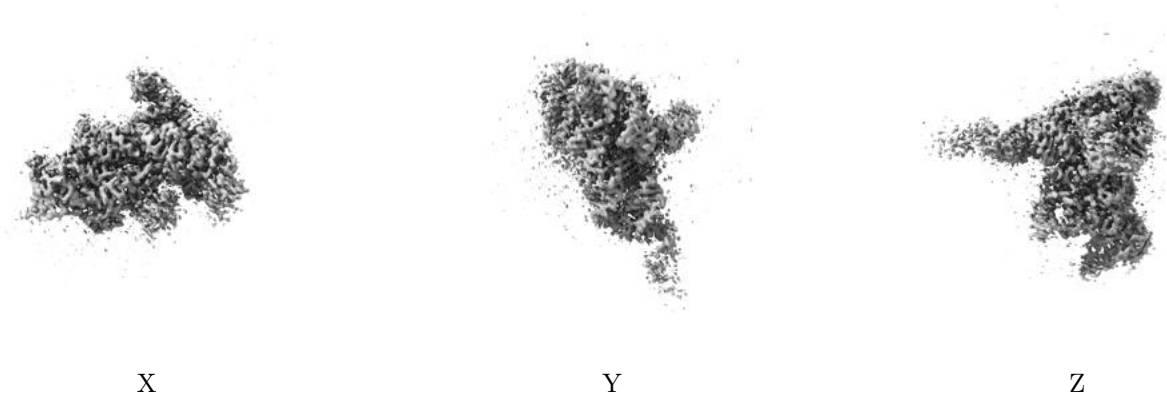


Z Index: 94

The images above show the largest variance slices of the map in three orthogonal directions.

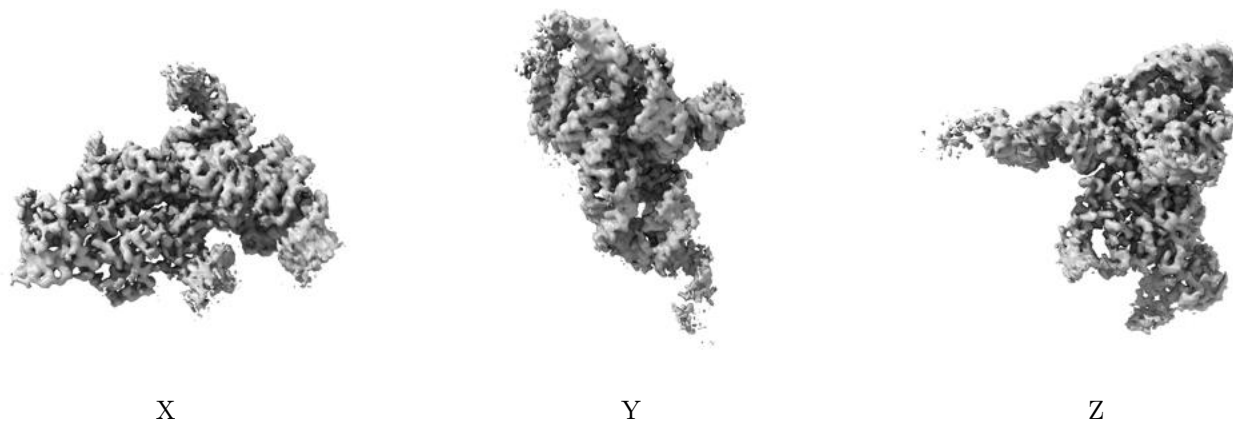
## 6.4 Orthogonal surface views [i](#)

### 6.4.1 Primary map



The images above show the 3D surface view of the map at the recommended contour level 0.02. These images, in conjunction with the slice images, may facilitate assessment of whether an appropriate contour level has been provided.

### 6.4.2 Raw map



These images show the 3D surface of the raw map. The raw map's contour level was selected so that its surface encloses the same volume as the primary map does at its recommended contour level.

## 6.5 Mask visualisation [i](#)

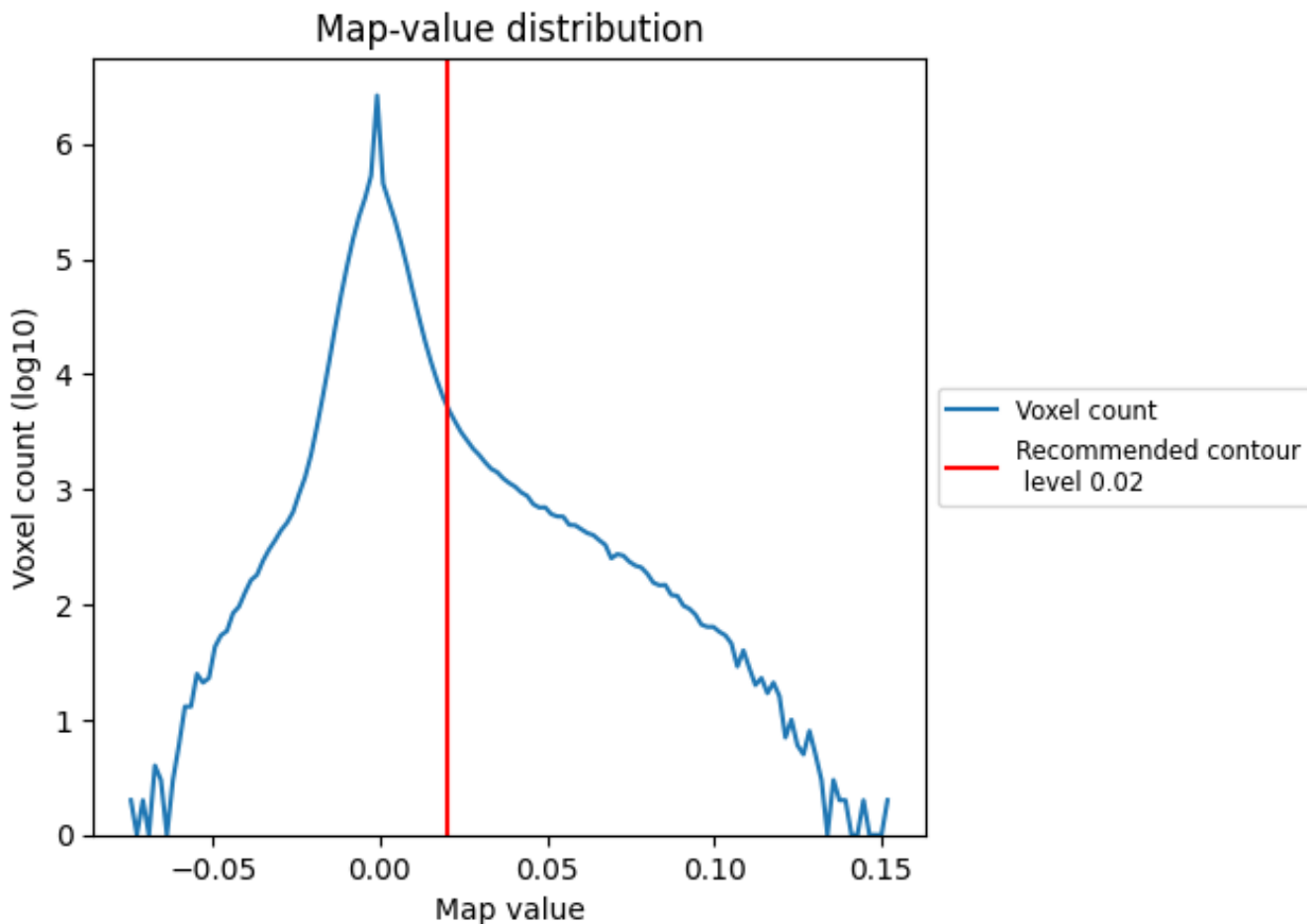
This section was not generated. No masks/segmentation were deposited.



## 7 Map analysis [i](#)

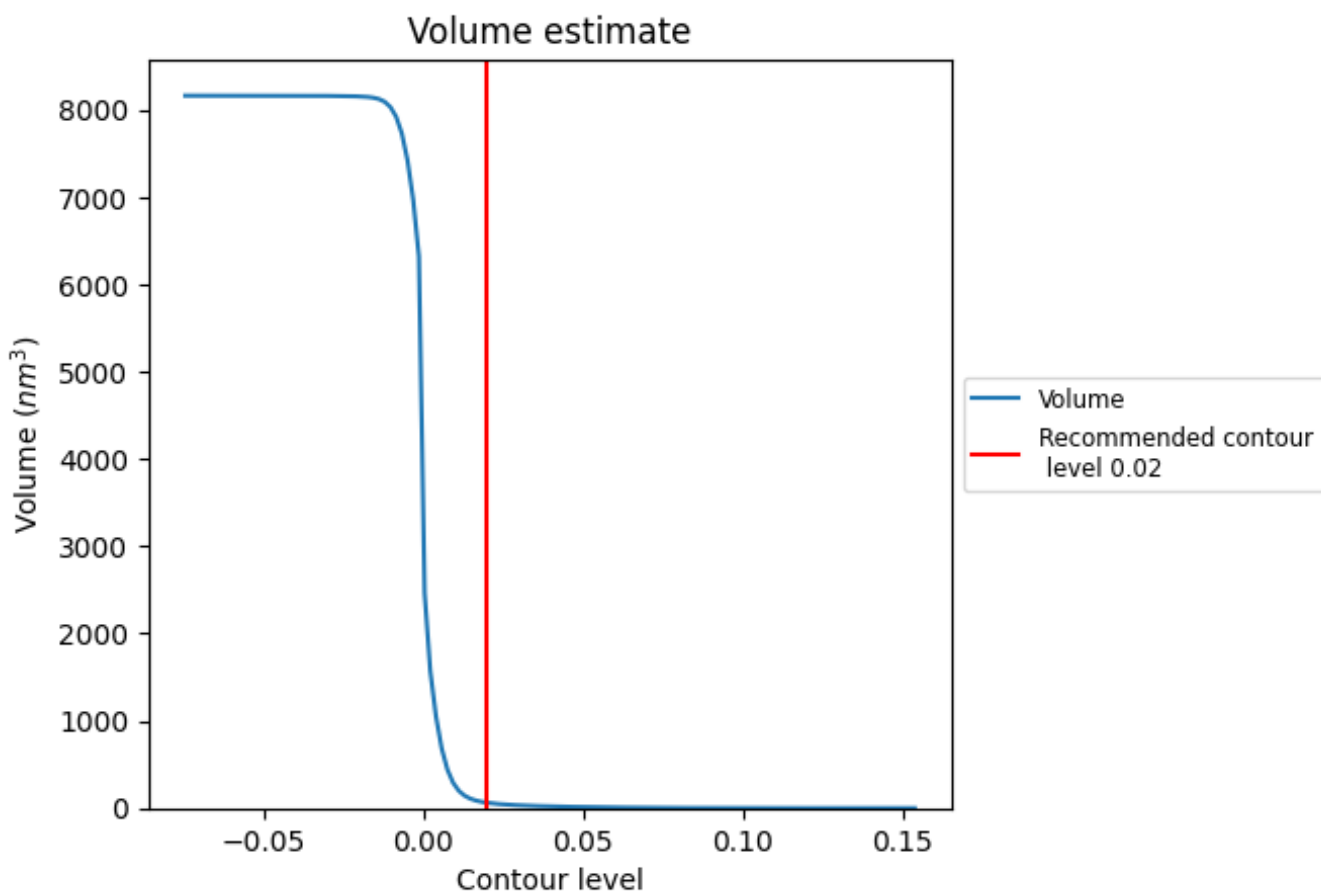
This section contains the results of statistical analysis of the map.

### 7.1 Map-value distribution [i](#)



The map-value distribution is plotted in 128 intervals along the x-axis. The y-axis is logarithmic. A spike in this graph at zero usually indicates that the volume has been masked.

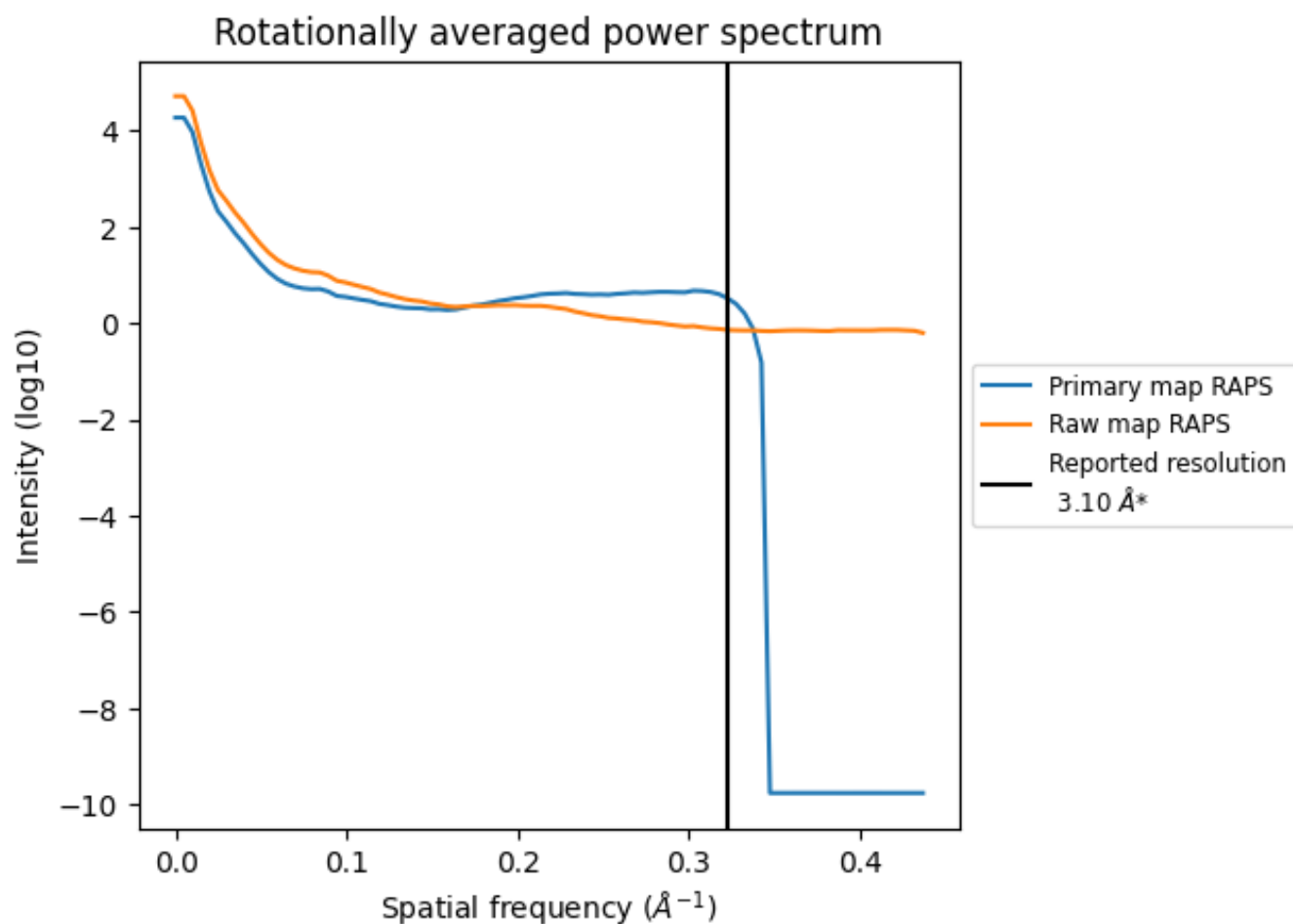
## 7.2 Volume estimate [i](#)



The volume at the recommended contour level is 61 nm<sup>3</sup>; this corresponds to an approximate mass of 55 kDa.

The volume estimate graph shows how the enclosed volume varies with the contour level. The recommended contour level is shown as a vertical line and the intersection between the line and the curve gives the volume of the enclosed surface at the given level.

### 7.3 Rotationally averaged power spectrum [i](#)

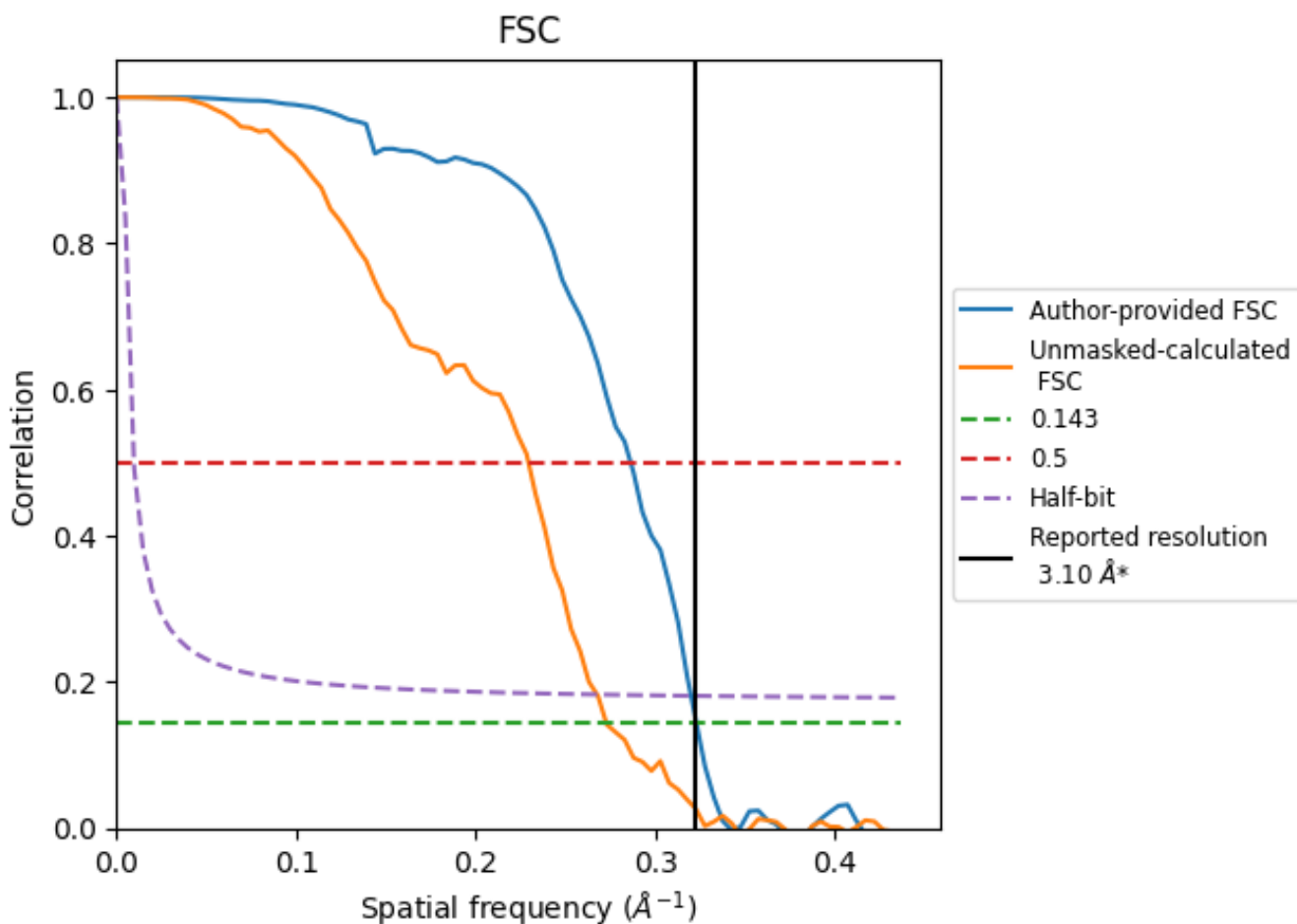


\*Reported resolution corresponds to spatial frequency of 0.323 Å<sup>-1</sup>

## 8 Fourier-Shell correlation [i](#)

Fourier-Shell Correlation (FSC) is the most commonly used method to estimate the resolution of single-particle and subtomogram-averaged maps. The shape of the curve depends on the imposed symmetry, mask and whether or not the two 3D reconstructions used were processed from a common reference. The reported resolution is shown as a black line. A curve is displayed for the half-bit criterion in addition to lines showing the 0.143 gold standard cut-off and 0.5 cut-off.

### 8.1 FSC [i](#)



\*Reported resolution corresponds to spatial frequency of 0.323 Å<sup>-1</sup>

## 8.2 Resolution estimates [i](#)

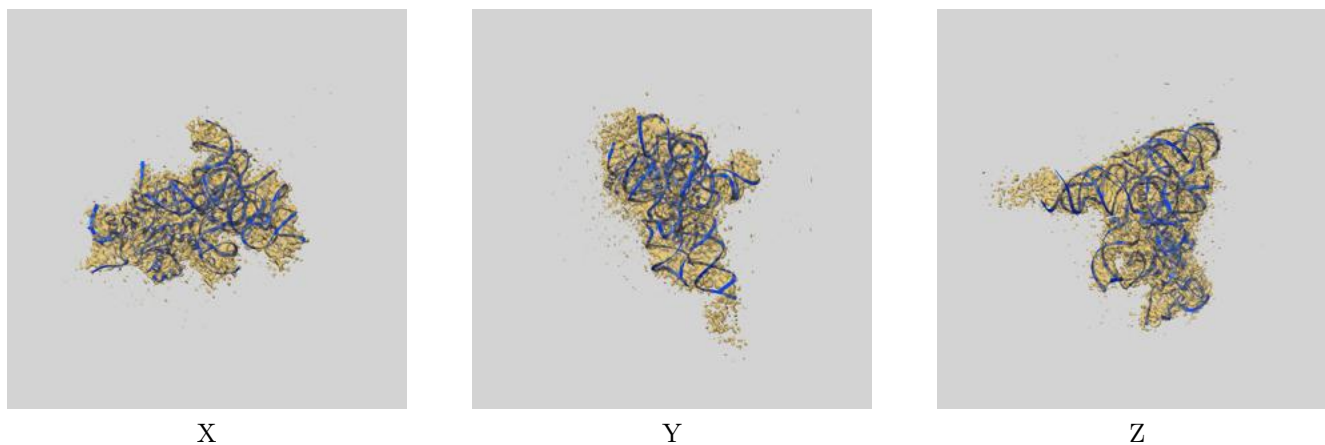
Resolution estimate (Å)	Estimation criterion (FSC cut-off)		
	0.143	0.5	Half-bit
Reported by author	3.10	-	-
Author-provided FSC curve	3.10	3.49	3.12
Unmasked-calculated*	3.66	4.36	3.73

\*Resolution estimate based on FSC curve calculated by comparison of deposited half-maps. The value from deposited half-maps intersecting FSC 0.143 CUT-OFF 3.66 differs from the reported value 3.1 by more than 10 %

## 9 Map-model fit [i](#)

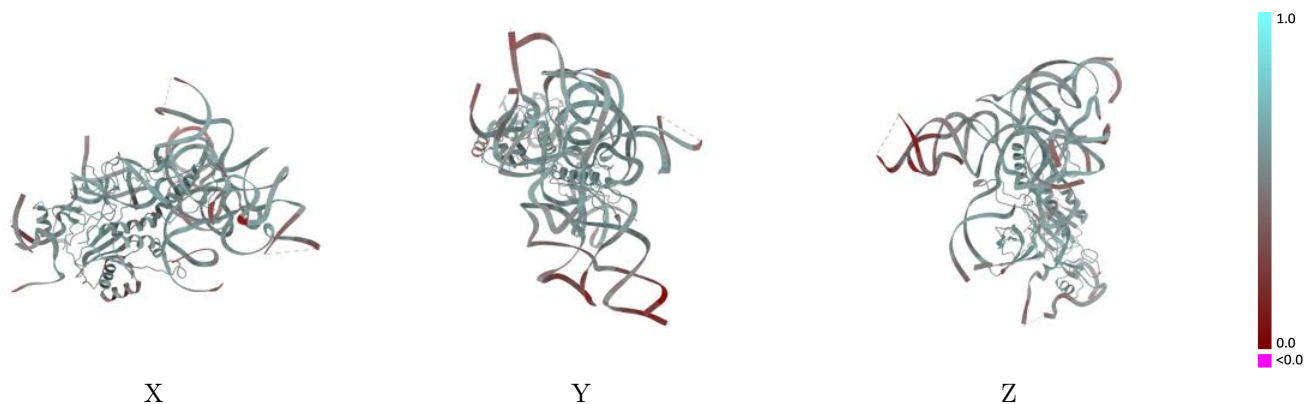
This section contains information regarding the fit between EMDB map EMD-27533 and PDB model 8DMB. Per-residue inclusion information can be found in section [3](#) on page [6](#).

### 9.1 Map-model overlay [i](#)



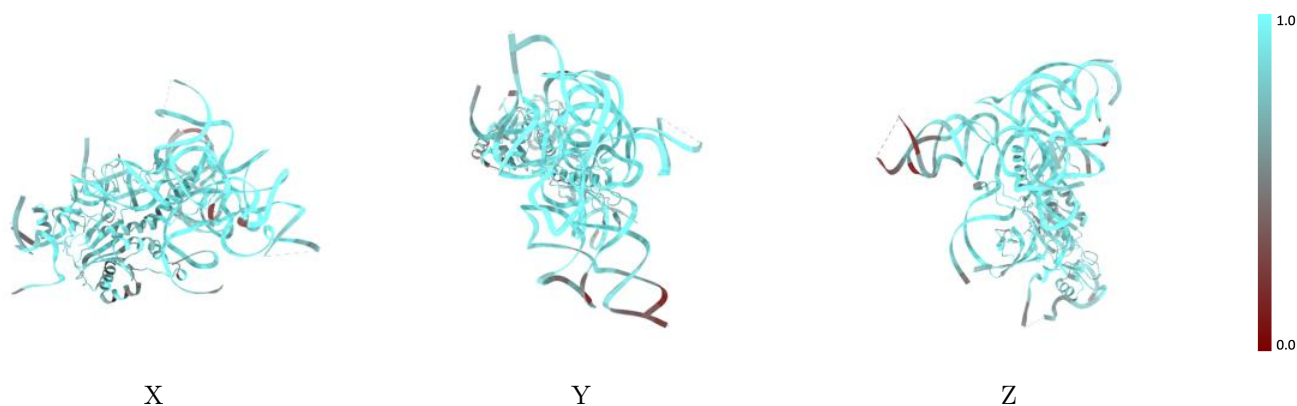
The images above show the 3D surface view of the map at the recommended contour level 0.02 at 50% transparency in yellow overlaid with a ribbon representation of the model coloured in blue. These images allow for the visual assessment of the quality of fit between the atomic model and the map.

## 9.2 Q-score mapped to coordinate model [\(i\)](#)



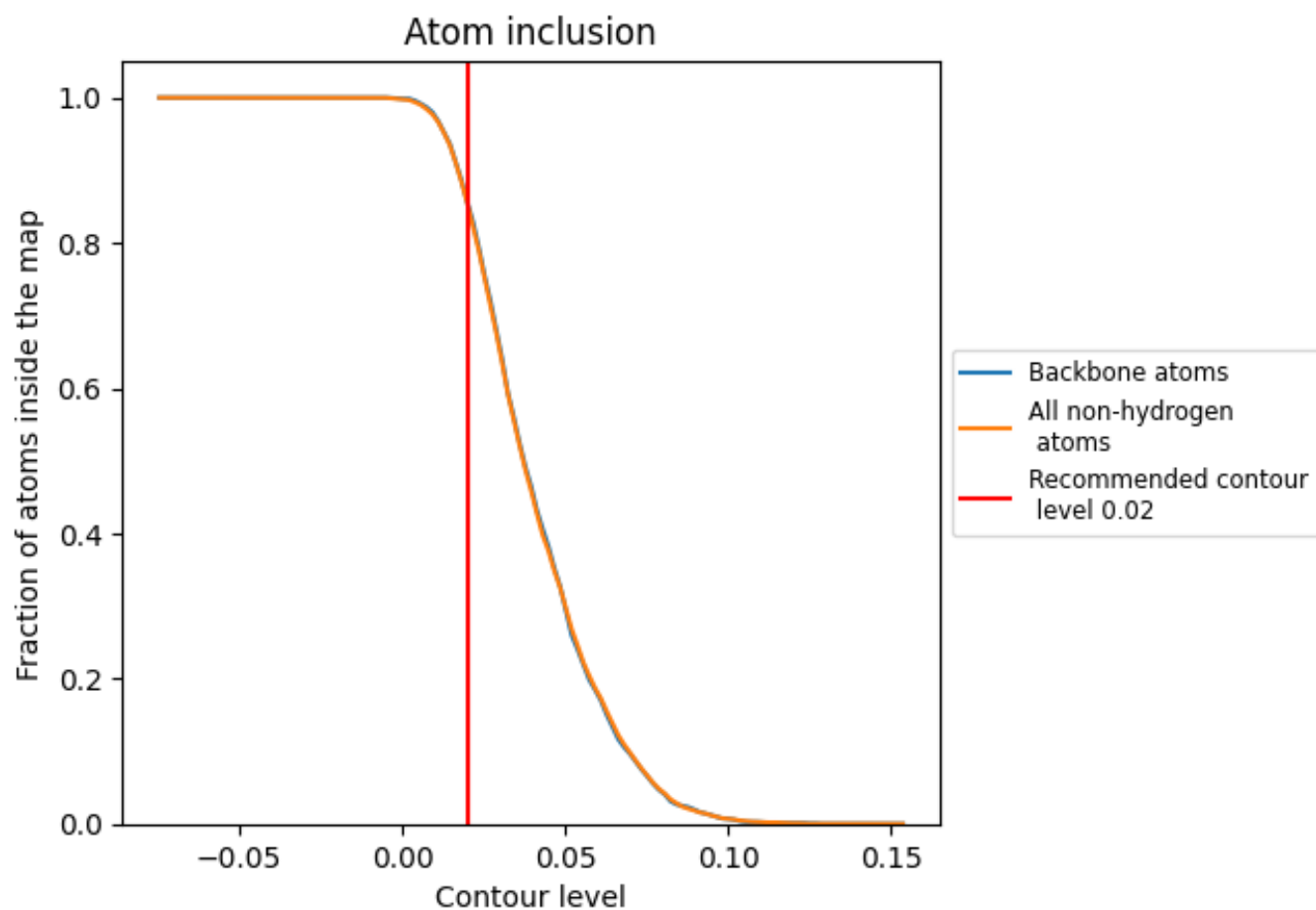
The images above show the model with each residue coloured according to its Q-score. This shows their resolvability in the map with higher Q-score values reflecting better resolvability. Please note: Q-score is calculating the resolvability of atoms, and thus high values are only expected at resolutions at which atoms can be resolved. Low Q-score values may therefore be expected for many entries.

## 9.3 Atom inclusion mapped to coordinate model [\(i\)](#)



The images above show the model with each residue coloured according to its atom inclusion. This shows to what extent they are inside the map at the recommended contour level (0.02).

## 9.4 Atom inclusion [i](#)













At the recommended contour level, 86% of all backbone atoms, 85% of all non-hydrogen atoms, are inside the map.



## 9.5 Map-model fit summary

The table lists the average atom inclusion at the recommended contour level (0.02) and Q-score for the entire model and for each chain.

Chain	Atom inclusion	Q-score
All	 0.8547	 0.5230
P	 0.8553	 0.5550
W	 0.8507	 0.5040
X	 0.8789	 0.5340
Y	 0.8039	 0.5180

