



# Full wwPDB X-ray Structure Validation Report ⓘ

Nov 20, 2023 – 09:12 PM JST

PDB ID : 7DJO  
Title : The co-crystal structure of DYRK2 with a small molecule inhibitor 17  
Authors : Wei, T.; Xiao, J.  
Deposited on : 2020-11-20  
Resolution : 2.50 Å(reported)

This is a Full wwPDB X-ray Structure Validation Report for a publicly released PDB entry.

We welcome your comments at [validation@mail.wwpdb.org](mailto:validation@mail.wwpdb.org)

A user guide is available at

<https://www.wwpdb.org/validation/2017/XrayValidationReportHelp>

with specific help available everywhere you see the ⓘ symbol.

The types of validation reports are described at

<http://www.wwpdb.org/validation/2017/FAQs#types>.

---

The following versions of software and data (see [references ⓘ](#)) were used in the production of this report:

MolProbity : 4.02b-467  
Mogul : 1.8.5 (274361), CSD as541be (2020)  
Xtriage (Phenix) : 1.13  
EDS : 2.36  
buster-report : 1.1.7 (2018)  
Percentile statistics : 20191225.v01 (using entries in the PDB archive December 25th 2019)  
Refmac : 5.8.0158  
CCP4 : 7.0.044 (Gargrove)  
Ideal geometry (proteins) : Engh & Huber (2001)  
Ideal geometry (DNA, RNA) : Parkinson et al. (1996)  
Validation Pipeline (wwPDB-VP) : 2.36

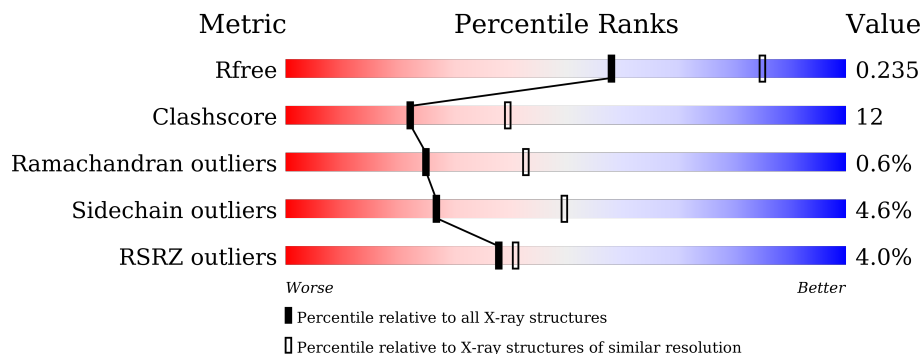
# 1 Overall quality at a glance

The following experimental techniques were used to determine the structure:

*X-RAY DIFFRACTION*

The reported resolution of this entry is 2.50 Å.

Percentile scores (ranging between 0-100) for global validation metrics of the entry are shown in the following graphic. The table shows the number of entries on which the scores are based.



Metric	Whole archive (#Entries)	Similar resolution (#Entries, resolution range(Å))
$R_{free}$	130704	4661 (2.50-2.50)
Clashscore	141614	5346 (2.50-2.50)
Ramachandran outliers	138981	5231 (2.50-2.50)
Sidechain outliers	138945	5233 (2.50-2.50)
RSRZ outliers	127900	4559 (2.50-2.50)

The table below summarises the geometric issues observed across the polymeric chains and their fit to the electron density. The red, orange, yellow and green segments of the lower bar indicate the fraction of residues that contain outliers for  $\geq 3$ , 2, 1 and 0 types of geometric quality criteria respectively. A grey segment represents the fraction of residues that are not modelled. The numeric value for each fraction is indicated below the corresponding segment, with a dot representing fractions  $\leq 5\%$ . The upper red bar (where present) indicates the fraction of residues that have poor fit to the electron density. The numeric value is given above the bar.

Mol	Chain	Length	Quality of chain
1	A	324	

The following table lists non-polymeric compounds, carbohydrate monomers and non-standard residues in protein, DNA, RNA chains that are outliers for geometric or electron-density-fit criteria:

Mol	Type	Chain	Res	Chirality	Geometry	Clashes	Electron density
2	H80	A	601	-	X	-	-

## 2 Entry composition [i](#)

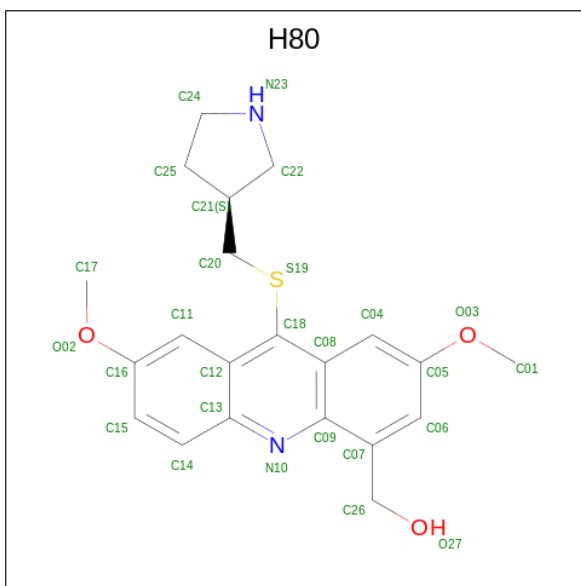
There are 3 unique types of molecules in this entry. The entry contains 2774 atoms, of which 0 are hydrogens and 0 are deuteriums.

In the tables below, the ZeroOcc column contains the number of atoms modelled with zero occupancy, the AltConf column contains the number of residues with at least one atom in alternate conformation and the Trace column contains the number of residues modelled with at most 2 atoms.

- Molecule 1 is a protein called Dual specificity tyrosine-phosphorylation-regulated kinase 2.

Mol	Chain	Residues	Atoms					ZeroOcc	AltConf	Trace	
			Total	C	N	O	P				S
1	A	324	2639	1673	483	462	2	19	26	0	0

- Molecule 2 is [2,7-dimethoxy-9-[[[(3S)-pyrrolidin-3-yl]methylsulfanyl]acridin-4-yl]methanol (three-letter code: H80) (formula: C<sub>21</sub>H<sub>24</sub>N<sub>2</sub>O<sub>3</sub>S) (labeled as "Ligand of Interest" by depositor).



Mol	Chain	Residues	Atoms					ZeroOcc	AltConf
			Total	C	N	O	S		
2	A	1	27	21	2	3	1	0	0

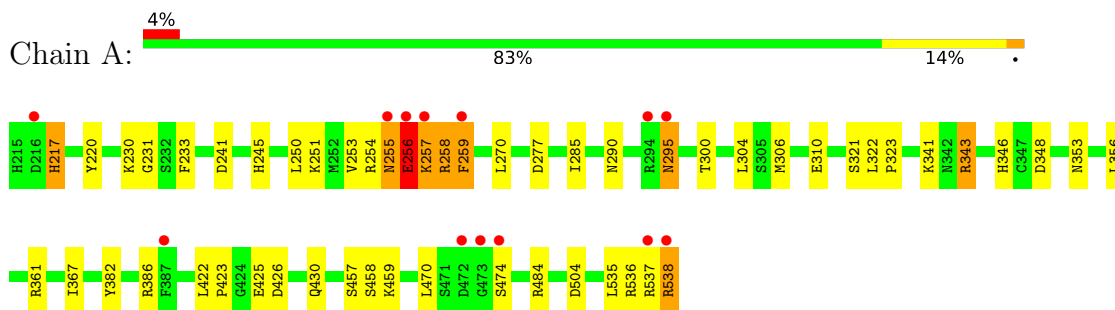
- Molecule 3 is water.

Mol	Chain	Residues	Atoms		ZeroOcc	AltConf
3	A	108	Total	O	0	0
			108	108		

### 3 Residue-property plots [i](#)

These plots are drawn for all protein, RNA, DNA and oligosaccharide chains in the entry. The first graphic for a chain summarises the proportions of the various outlier classes displayed in the second graphic. The second graphic shows the sequence view annotated by issues in geometry and electron density. Residues are color-coded according to the number of geometric quality criteria for which they contain at least one outlier: green = 0, yellow = 1, orange = 2 and red = 3 or more. A red dot above a residue indicates a poor fit to the electron density ( $RSRZ > 2$ ). Stretches of 2 or more consecutive residues without any outlier are shown as a green connector. Residues present in the sample, but not in the model, are shown in grey.

- Molecule 1: Dual specificity tyrosine-phosphorylation-regulated kinase 2



## 4 Data and refinement statistics

Property	Value	Source
Space group	C 2 2 21	Depositor
Cell constants a, b, c, $\alpha$ , $\beta$ , $\gamma$	64.95Å 128.93Å 133.55Å 90.00° 90.00° 90.00°	Depositor
Resolution (Å)	46.38 – 2.50 46.38 – 2.50	Depositor EDS
% Data completeness (in resolution range)	92.2 (46.38-2.50) 92.3 (46.38-2.50)	Depositor EDS
$R_{merge}$	(Not available)	Depositor
$R_{sym}$	(Not available)	Depositor
$\langle I/\sigma(I) \rangle$ <sup>1</sup>	2.67 (at 2.51Å)	Xtrriage
Refinement program	PHENIX 1.14_3260	Depositor
R, $R_{free}$	0.178 , 0.234 0.194 , 0.235	Depositor DCC
$R_{free}$ test set	1829 reflections (10.00%)	wwPDB-VP
Wilson B-factor (Å <sup>2</sup> )	37.3	Xtrriage
Anisotropy	0.205	Xtrriage
Bulk solvent $k_{sol}$ (e/Å <sup>3</sup> ), $B_{sol}$ (Å <sup>2</sup> )	0.33 , 45.2	EDS
L-test for twinning <sup>2</sup>	$\langle  L  \rangle = 0.47$ , $\langle L^2 \rangle = 0.30$	Xtrriage
Estimated twinning fraction	No twinning to report.	Xtrriage
$F_o, F_c$ correlation	0.93	EDS
Total number of atoms	2774	wwPDB-VP
Average B, all atoms (Å <sup>2</sup> )	40.0	wwPDB-VP

Xtrriage's analysis on translational NCS is as follows: *The largest off-origin peak in the Patterson function is 4.53% of the height of the origin peak. No significant pseudotranslation is detected.*

<sup>1</sup>Intensities estimated from amplitudes.

<sup>2</sup>Theoretical values of  $\langle |L| \rangle$ ,  $\langle L^2 \rangle$  for acentric reflections are 0.5, 0.333 respectively for untwinned datasets, and 0.375, 0.2 for perfectly twinned datasets.

## 5 Model quality [i](#)

### 5.1 Standard geometry [i](#)

Bond lengths and bond angles in the following residue types are not validated in this section: H80, SEP, PTR

The Z score for a bond length (or angle) is the number of standard deviations the observed value is removed from the expected value. A bond length (or angle) with  $|Z| > 5$  is considered an outlier worth inspection. RMSZ is the root-mean-square of all Z scores of the bond lengths (or angles).

Mol	Chain	Bond lengths		Bond angles	
		RMSZ	# Z  >5	RMSZ	# Z  >5
1	A	0.47	0/2670	0.60	0/3589

There are no bond length outliers.

There are no bond angle outliers.

There are no chirality outliers.

There are no planarity outliers.

### 5.2 Too-close contacts [i](#)

In the following table, the Non-H and H(model) columns list the number of non-hydrogen atoms and hydrogen atoms in the chain respectively. The H(added) column lists the number of hydrogen atoms added and optimized by MolProbity. The Clashes column lists the number of clashes within the asymmetric unit, whereas Symm-Clashes lists symmetry-related clashes.

Mol	Chain	Non-H	H(model)	H(added)	Clashes	Symm-Clashes
1	A	2639	0	2660	62	1
2	A	27	0	0	0	0
3	A	108	0	0	2	0
All	All	2774	0	2660	62	1

The all-atom clashscore is defined as the number of clashes found per 1000 atoms (including hydrogen atoms). The all-atom clashscore for this structure is 12.

All (62) close contacts within the same asymmetric unit are listed below, sorted by their clash magnitude.

Atom-1	Atom-2	Interatomic distance (Å)	Clash overlap (Å)
1:A:230:LYS:HD3	1:A:231:GLY:N	1.67	1.09

*Continued on next page...*

*Continued from previous page...*

Atom-1	Atom-2	Interatomic distance (Å)	Clash overlap (Å)
1:A:230:LYS:HD3	1:A:231:GLY:H	1.08	1.08
1:A:361:ARG:HB3	1:A:361:ARG:HH11	1.23	1.02
1:A:255:ASN:HB2	1:A:295:ASN:O	1.73	0.88
1:A:459:LYS:HA	1:A:459:LYS:CE	2.05	0.84
1:A:361:ARG:HB3	1:A:361:ARG:NH1	1.93	0.83
1:A:233:PHE:HB2	1:A:253:VAL:HG13	1.59	0.82
1:A:255:ASN:CB	1:A:295:ASN:O	2.33	0.76
1:A:285:ILE:HB	1:A:367:ILE:HG22	1.75	0.69
1:A:233:PHE:CD2	1:A:253:VAL:HG22	2.28	0.68
1:A:459:LYS:CE	1:A:459:LYS:CA	2.71	0.67
1:A:230:LYS:CD	1:A:231:GLY:N	2.52	0.65
1:A:254:ARG:HG2	1:A:254:ARG:HH11	1.62	0.63
1:A:253:VAL:HG11	1:A:259:PHE:HB2	1.81	0.61
1:A:470:LEU:HD12	1:A:474:SER:HB2	1.83	0.60
1:A:253:VAL:HG11	1:A:259:PHE:CB	2.31	0.60
1:A:538:ARG:CZ	1:A:538:ARG:HB3	2.33	0.59
1:A:459:LYS:CA	1:A:459:LYS:HE3	2.33	0.57
1:A:233:PHE:HB2	1:A:253:VAL:HG22	1.86	0.57
1:A:306:MET:HE2	1:A:310:GLU:HB3	1.89	0.55
1:A:457:SER:C	1:A:459:LYS:H	2.09	0.55
1:A:253:VAL:CG1	1:A:259:PHE:HB2	2.36	0.55
1:A:346:HIS:CE1	1:A:348:ASP:O	2.60	0.53
1:A:217:HIS:CE1	1:A:220:TYR:CD1	2.97	0.53
1:A:233:PHE:HB2	1:A:253:VAL:CG1	2.35	0.53
1:A:459:LYS:HA	1:A:459:LYS:HE3	1.87	0.52
1:A:254:ARG:HG2	1:A:254:ARG:NH1	2.23	0.52
1:A:459:LYS:HA	1:A:459:LYS:NZ	2.26	0.51
1:A:250:LEU:HD13	1:A:300:THR:HG22	1.93	0.51
1:A:217:HIS:CE1	1:A:220:TYR:CE1	2.99	0.50
1:A:346:HIS:HE1	1:A:348:ASP:O	1.93	0.50
1:A:254:ARG:O	1:A:259:PHE:HD2	1.95	0.49
1:A:255:ASN:HB3	1:A:295:ASN:O	2.12	0.49
1:A:484:ARG:O	1:A:484:ARG:HG2	2.13	0.48
1:A:253:VAL:CG1	1:A:259:PHE:CB	2.91	0.47
1:A:341:LYS:HB2	1:A:341:LYS:HE2	1.62	0.47
1:A:251:LYS:HE2	1:A:253:VAL:CG2	2.44	0.47
1:A:290:ASN:ND2	3:A:707:HOH:O	2.47	0.47
1:A:386:ARG:NH1	1:A:425:GLU:O	2.48	0.46
1:A:348:ASP:O	1:A:353:ASN:ND2	2.47	0.45
1:A:422:LEU:HB2	1:A:430:GLN:HE22	1.81	0.45
1:A:457:SER:C	1:A:459:LYS:N	2.68	0.44

*Continued on next page...*

Continued from previous page...

Atom-1	Atom-2	Interatomic distance (Å)	Clash overlap (Å)
1:A:241:ASP:O	1:A:245:HIS:N	2.47	0.44
1:A:230:LYS:HE3	1:A:231:GLY:O	2.18	0.44
1:A:259:PHE:CD1	1:A:259:PHE:N	2.84	0.44
1:A:233:PHE:O	1:A:254:ARG:HG3	2.19	0.43
1:A:258:ARG:HD2	1:A:258:ARG:HA	1.78	0.43
1:A:322:LEU:HD23	1:A:322:LEU:HA	1.88	0.43
1:A:422:LEU:HB2	1:A:430:GLN:NE2	2.34	0.43
1:A:270:LEU:HD23	1:A:270:LEU:HA	1.88	0.42
1:A:459:LYS:N	1:A:459:LYS:HD2	2.16	0.42
1:A:457:SER:O	1:A:459:LYS:N	2.52	0.42
1:A:343:ARG:HE	1:A:343:ARG:HB3	1.62	0.42
1:A:256:GLU:HB3	1:A:257:LYS:H	1.68	0.41
1:A:253:VAL:HG11	1:A:259:PHE:HB3	2.03	0.41
1:A:233:PHE:CG	1:A:253:VAL:HG22	2.56	0.41
1:A:233:PHE:O	1:A:254:ARG:N	2.39	0.40
1:A:304:LEU:HB3	1:A:356:LEU:O	2.21	0.40
1:A:277:ASP:OD2	3:A:701:HOH:O	2.22	0.40
1:A:321:SER:HB2	1:A:323:PRO:HD2	2.02	0.40
1:A:538:ARG:H	1:A:538:ARG:HG2	1.55	0.40
1:A:217:HIS:O	1:A:217:HIS:CG	2.74	0.40

All (1) symmetry-related close contacts are listed below. The label for Atom-2 includes the symmetry operator and encoded unit-cell translations to be applied.

Atom-1	Atom-2	Interatomic distance (Å)	Clash overlap (Å)
1:A:423:PRO:O	1:A:484:ARG:NH1[4_575]	1.93	0.27

## 5.3 Torsion angles [i](#)

### 5.3.1 Protein backbone [i](#)

In the following table, the Percentiles column shows the percent Ramachandran outliers of the chain as a percentile score with respect to all X-ray entries followed by that with respect to entries of similar resolution.

The Analysed column shows the number of residues for which the backbone conformation was analysed, and the total number of residues.

Mol	Chain	Analysed	Favoured	Allowed	Outliers	Percentiles
1	A	320/324 (99%)	304 (95%)	14 (4%)	2 (1%)	25 43



All (2) Ramachandran outliers are listed below:

Mol	Chain	Res	Type
1	A	295	ASN
1	A	256	GLU

### 5.3.2 Protein sidechains [i](#)

In the following table, the Percentiles column shows the percent sidechain outliers of the chain as a percentile score with respect to all X-ray entries followed by that with respect to entries of similar resolution.

The Analysed column shows the number of residues for which the sidechain conformation was analysed, and the total number of residues.

Mol	Chain	Analysed	Rotameric	Outliers	Percentiles
1	A	283/283 (100%)	270 (95%)	13 (5%)	27 50

All (13) residues with a non-rotameric sidechain are listed below:

Mol	Chain	Res	Type
1	A	217	HIS
1	A	255	ASN
1	A	256	GLU
1	A	257	LYS
1	A	258	ARG
1	A	259	PHE
1	A	343	ARG
1	A	426	ASP
1	A	504	ASP
1	A	535	LEU
1	A	536	ARG
1	A	537	ARG
1	A	538	ARG

Sometimes sidechains can be flipped to improve hydrogen bonding and reduce clashes. All (1) such sidechains are listed below:

Mol	Chain	Res	Type
1	A	255	ASN

### 5.3.3 RNA [i](#)

There are no RNA molecules in this entry.

## 5.4 Non-standard residues in protein, DNA, RNA chains

2 non-standard protein/DNA/RNA residues are modelled in this entry.

In the following table, the Counts columns list the number of bonds (or angles) for which Mogul statistics could be retrieved, the number of bonds (or angles) that are observed in the model and the number of bonds (or angles) that are defined in the Chemical Component Dictionary. The Link column lists molecule types, if any, to which the group is linked. The Z score for a bond length (or angle) is the number of standard deviations the observed value is removed from the expected value. A bond length (or angle) with  $|Z| > 2$  is considered an outlier worth inspection. RMSZ is the root-mean-square of all Z scores of the bond lengths (or angles).

Mol	Type	Chain	Res	Link	Bond lengths			Bond angles		
					Counts	RMSZ	# Z  > 2	Counts	RMSZ	# Z  > 2
1	SEP	A	458	1	8,9,10	1.56	1 (12%)	8,12,14	1.56	2 (25%)
1	PTR	A	382	1	15,16,17	1.32	1 (6%)	19,22,24	0.49	0

In the following table, the Chirals column lists the number of chiral outliers, the number of chiral centers analysed, the number of these observed in the model and the number defined in the Chemical Component Dictionary. Similar counts are reported in the Torsion and Rings columns. '-' means no outliers of that kind were identified.

Mol	Type	Chain	Res	Link	Chirals	Torsions	Rings
1	SEP	A	458	1	-	4/5/8/10	-
1	PTR	A	382	1	-	0/10/11/13	0/1/1/1

All (2) bond length outliers are listed below:

Mol	Chain	Res	Type	Atoms	Z	Observed(Å)	Ideal(Å)
1	A	382	PTR	OH-CZ	-4.26	1.31	1.40
1	A	458	SEP	P-O1P	3.37	1.61	1.50

All (2) bond angle outliers are listed below:

Mol	Chain	Res	Type	Atoms	Z	Observed(°)	Ideal(°)
1	A	458	SEP	OG-CB-CA	3.02	111.08	108.14
1	A	458	SEP	P-OG-CB	-2.45	111.55	118.30

There are no chirality outliers.

All (4) torsion outliers are listed below:

Mol	Chain	Res	Type	Atoms
1	A	458	SEP	N-CA-CB-OG

*Continued on next page...*

*Continued from previous page...*

Mol	Chain	Res	Type	Atoms
1	A	458	SEP	CA-CB-OG-P
1	A	458	SEP	CB-OG-P-O1P
1	A	458	SEP	CB-OG-P-O2P

There are no ring outliers.

No monomer is involved in short contacts.

## 5.5 Carbohydrates [i](#)

There are no monosaccharides in this entry.

## 5.6 Ligand geometry [i](#)

1 ligand is modelled in this entry.

In the following table, the Counts columns list the number of bonds (or angles) for which Mogul statistics could be retrieved, the number of bonds (or angles) that are observed in the model and the number of bonds (or angles) that are defined in the Chemical Component Dictionary. The Link column lists molecule types, if any, to which the group is linked. The Z score for a bond length (or angle) is the number of standard deviations the observed value is removed from the expected value. A bond length (or angle) with  $|Z| > 2$  is considered an outlier worth inspection. RMSZ is the root-mean-square of all Z scores of the bond lengths (or angles).

Mol	Type	Chain	Res	Link	Bond lengths			Bond angles		
					Counts	RMSZ	# Z  > 2	Counts	RMSZ	# Z  > 2
2	H80	A	601	-	29,30,30	3.44	14 (48%)	35,42,42	4.67	22 (62%)

In the following table, the Chirals column lists the number of chiral outliers, the number of chiral centers analysed, the number of these observed in the model and the number defined in the Chemical Component Dictionary. Similar counts are reported in the Torsion and Rings columns. '-' means no outliers of that kind were identified.

Mol	Type	Chain	Res	Link	Chirals	Torsions	Rings
2	H80	A	601	-	-	2/11/18/18	0/4/4/4

All (14) bond length outliers are listed below:

Mol	Chain	Res	Type	Atoms	Z	Observed(Å)	Ideal(Å)
2	A	601	H80	C07-C09	7.94	1.59	1.43
2	A	601	H80	C26-C07	7.68	1.57	1.51

*Continued on next page...*

Continued from previous page...

Mol	Chain	Res	Type	Atoms	Z	Observed(Å)	Ideal(Å)
2	A	601	H80	C06-C05	6.30	1.49	1.38
2	A	601	H80	C14-C13	5.66	1.51	1.41
2	A	601	H80	C04-C08	5.31	1.52	1.42
2	A	601	H80	C18-S19	4.78	1.84	1.77
2	A	601	H80	C11-C12	4.66	1.51	1.42
2	A	601	H80	C20-S19	4.07	1.89	1.81
2	A	601	H80	C15-C16	3.39	1.45	1.38
2	A	601	H80	C13-N10	3.11	1.40	1.35
2	A	601	H80	C18-C12	2.81	1.47	1.41
2	A	601	H80	C06-C07	2.52	1.42	1.37
2	A	601	H80	C04-C05	2.33	1.41	1.37
2	A	601	H80	C08-C09	2.15	1.47	1.42

All (22) bond angle outliers are listed below:

Mol	Chain	Res	Type	Atoms	Z	Observed(°)	Ideal(°)
2	A	601	H80	C12-C18-C08	12.24	131.05	121.24
2	A	601	H80	C09-N10-C13	11.41	130.01	117.02
2	A	601	H80	C14-C13-N10	7.99	129.16	119.09
2	A	601	H80	C16-C11-C12	7.27	129.72	120.05
2	A	601	H80	C07-C09-N10	6.46	125.55	118.51
2	A	601	H80	C12-C13-N10	-6.38	117.38	123.35
2	A	601	H80	C15-C16-C11	-5.68	113.17	120.81
2	A	601	H80	C05-C04-C08	5.59	127.50	120.05
2	A	601	H80	C20-S19-C18	5.40	114.36	102.28
2	A	601	H80	C15-C14-C13	5.10	127.26	120.84
2	A	601	H80	C18-C12-C13	-4.95	111.92	117.49
2	A	601	H80	C14-C13-C12	-4.95	113.46	119.13
2	A	601	H80	C08-C09-N10	-4.52	117.08	123.31
2	A	601	H80	C04-C05-C06	-4.36	115.88	121.12
2	A	601	H80	C18-C08-C09	-3.89	112.55	117.76
2	A	601	H80	C12-C18-S19	-3.88	111.95	119.09
2	A	601	H80	C11-C12-C13	-2.65	115.68	118.94
2	A	601	H80	C25-C24-N23	2.48	111.25	105.63
2	A	601	H80	O27-C26-C07	2.43	115.79	112.82
2	A	601	H80	C07-C09-C08	-2.36	117.38	119.79
2	A	601	H80	C01-O03-C05	2.11	122.10	117.51
2	A	601	H80	C17-O02-C16	2.09	122.05	117.51

There are no chirality outliers.

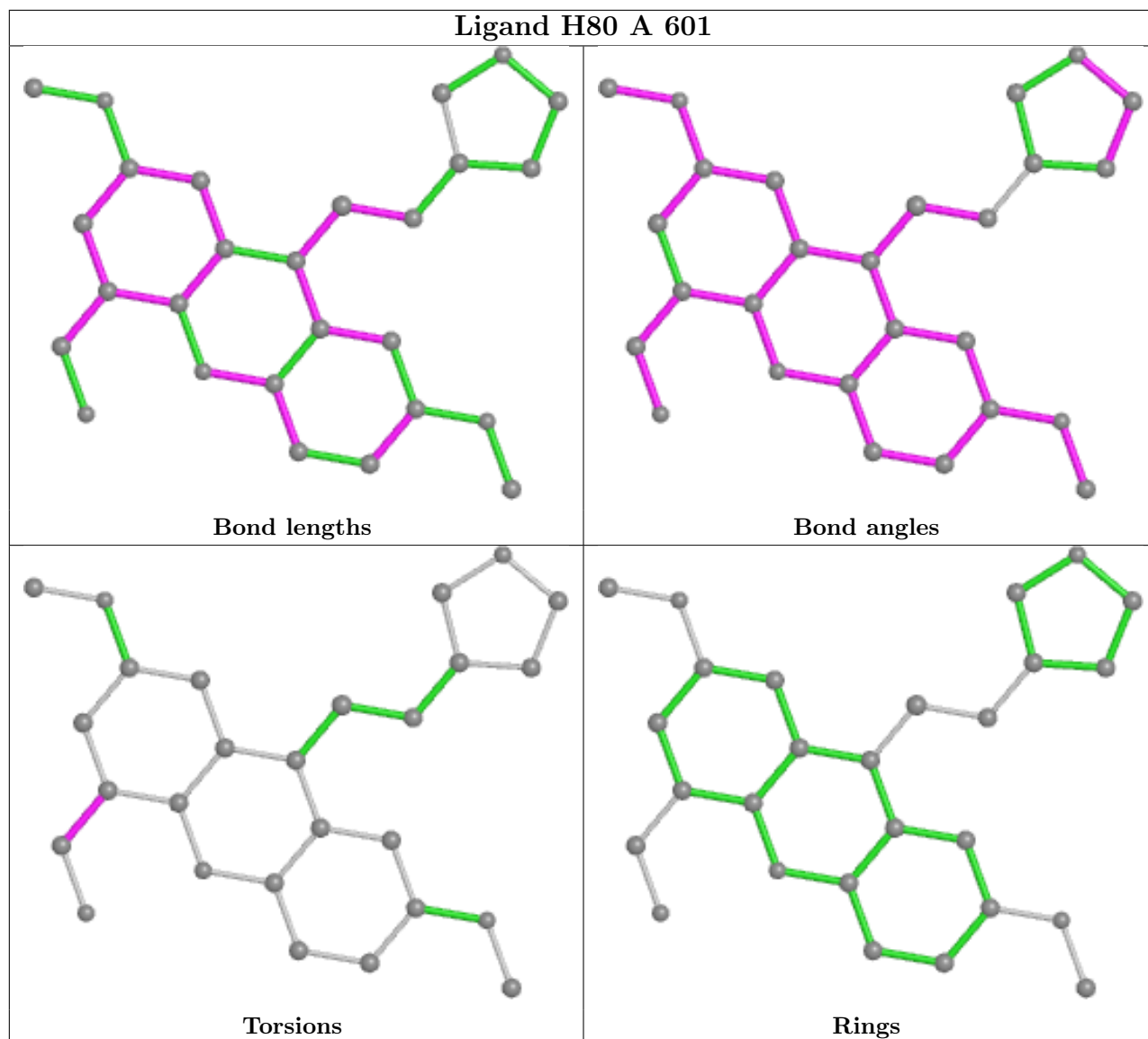
All (2) torsion outliers are listed below:

Mol	Chain	Res	Type	Atoms
2	A	601	H80	C06-C07-C26-O27
2	A	601	H80	C09-C07-C26-O27

There are no ring outliers.

No monomer is involved in short contacts.

The following is a two-dimensional graphical depiction of Mogul quality analysis of bond lengths, bond angles, torsion angles, and ring geometry for all instances of the Ligand of Interest. In addition, ligands with molecular weight > 250 and outliers as shown on the validation Tables will also be included. For torsion angles, if less than 5% of the Mogul distribution of torsion angles is within 10 degrees of the torsion angle in question, then that torsion angle is considered an outlier. Any bond that is central to one or more torsion angles identified as an outlier by Mogul will be highlighted in the graph. For rings, the root-mean-square deviation (RMSD) between the ring in question and similar rings identified by Mogul is calculated over all ring torsion angles. If the average RMSD is greater than 60 degrees and the minimal RMSD between the ring in question and any Mogul-identified rings is also greater than 60 degrees, then that ring is considered an outlier. The outliers are highlighted in purple. The color gray indicates Mogul did not find sufficient equivalents in the CSD to analyse the geometry.



## 5.7 Other polymers [i](#)

There are no such residues in this entry.

## 5.8 Polymer linkage issues [i](#)

There are no chain breaks in this entry.

## 6 Fit of model and data [i](#)

### 6.1 Protein, DNA and RNA chains [i](#)

In the following table, the column labelled ‘#RSRZ > 2’ contains the number (and percentage) of RSRZ outliers, followed by percent RSRZ outliers for the chain as percentile scores relative to all X-ray entries and entries of similar resolution. The OWAB column contains the minimum, median, 95<sup>th</sup> percentile and maximum values of the occupancy-weighted average B-factor per residue. The column labelled ‘Q < 0.9’ lists the number of (and percentage) of residues with an average occupancy less than 0.9.

Mol	Chain	Analysed	<RSRZ>	#RSRZ>2	OWAB(Å <sup>2</sup> )	Q<0.9
1	A	322/324 (99%)	-0.02	13 (4%) 38 41	19, 37, 72, 99	0

All (13) RSRZ outliers are listed below:

Mol	Chain	Res	Type	RSRZ
1	A	257	LYS	6.6
1	A	538	ARG	4.0
1	A	256	GLU	3.6
1	A	473	GLY	3.5
1	A	387	PHE	3.3
1	A	472	ASP	3.3
1	A	537	ARG	3.0
1	A	255	ASN	2.8
1	A	259	PHE	2.6
1	A	295	ASN	2.6
1	A	216	ASP	2.2
1	A	294	ARG	2.1
1	A	474	SER	2.1

### 6.2 Non-standard residues in protein, DNA, RNA chains [i](#)

MODRES-RSR INFOmissingINFO

### 6.3 Carbohydrates [i](#)

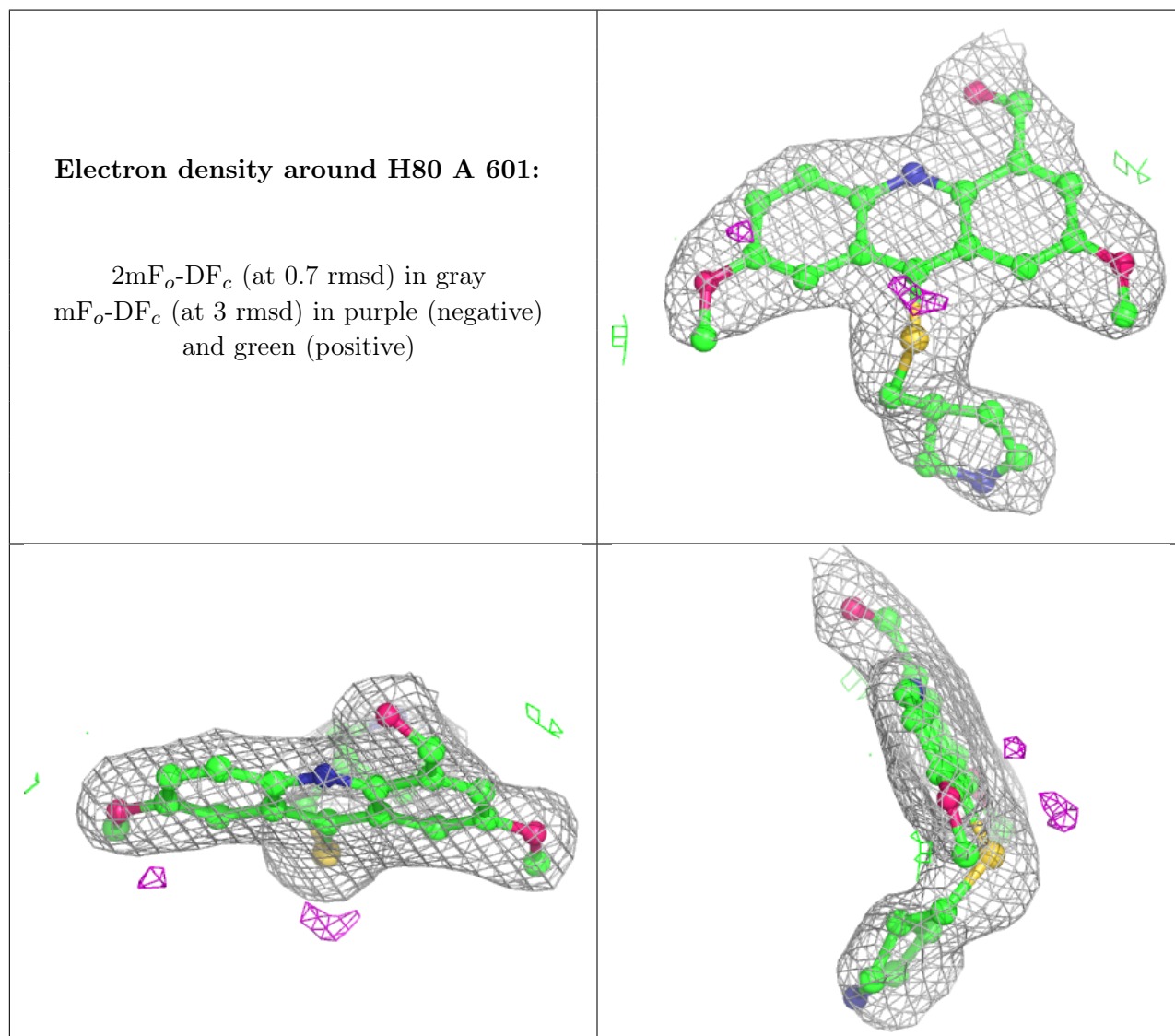
There are no monosaccharides in this entry.

## 6.4 Ligands [i](#)

In the following table, the Atoms column lists the number of modelled atoms in the group and the number defined in the chemical component dictionary. The B-factors column lists the minimum, median, 95<sup>th</sup> percentile and maximum values of B factors of atoms in the group. The column labelled 'Q<0.9' lists the number of atoms with occupancy less than 0.9.

Mol	Type	Chain	Res	Atoms	RSCC	RSR	B-factors(Å <sup>2</sup> )	Q<0.9
2	H80	A	601	27/27	0.95	0.15	22,40,58,64	0

The following is a graphical depiction of the model fit to experimental electron density of all instances of the Ligand of Interest. In addition, ligands with molecular weight > 250 and outliers as shown on the geometry validation Tables will also be included. Each fit is shown from different orientation to approximate a three-dimensional view.





## 6.5 Other polymers [i](#)

There are no such residues in this entry.