



Full wwPDB X-ray Structure Validation Report ⓘ

Nov 20, 2023 – 06:43 PM JST

PDB ID : 7D7Q
Title : Crystal structure of the transmembrane domain and linker region of Salpingoeca rosetta rhodopsin phosphodiesterase
Authors : Ikuta, T.; Shihoya, W.; Yamashita, K.; Nureki, O.
Deposited on : 2020-10-05
Resolution : 3.50 Å(reported)

This is a Full wwPDB X-ray Structure Validation Report for a publicly released PDB entry.

We welcome your comments at validation@mail.wwpdb.org

A user guide is available at

<https://www.wwpdb.org/validation/2017/XrayValidationReportHelp>

with specific help available everywhere you see the ⓘ symbol.

The types of validation reports are described at

<http://www.wwpdb.org/validation/2017/FAQs#types>.

The following versions of software and data (see [references ⓘ](#)) were used in the production of this report:

MolProbity : 4.02b-467
Mogul : 1.8.5 (274361), CSD as541be (2020)
Xtriage (Phenix) : 1.13
EDS : 2.36
buster-report : 1.1.7 (2018)
Percentile statistics : 20191225.v01 (using entries in the PDB archive December 25th 2019)
Refmac : 5.8.0158
CCP4 : 7.0.044 (Gargrove)
Ideal geometry (proteins) : Engh & Huber (2001)
Ideal geometry (DNA, RNA) : Parkinson et al. (1996)
Validation Pipeline (wwPDB-VP) : 2.36

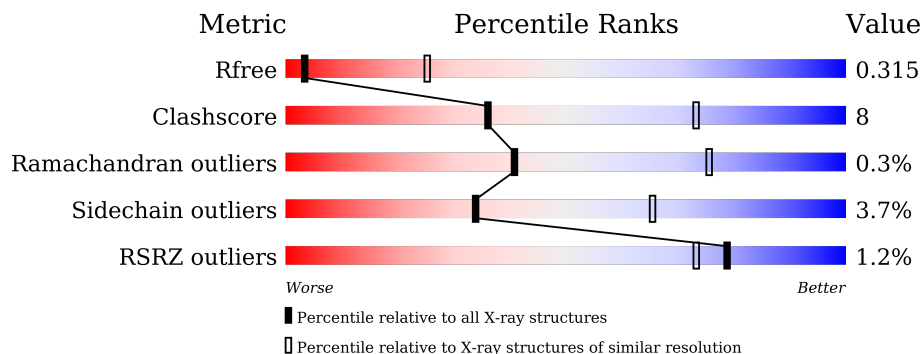
1 Overall quality at a glance

The following experimental techniques were used to determine the structure:

X-RAY DIFFRACTION

The reported resolution of this entry is 3.50 Å.

Percentile scores (ranging between 0-100) for global validation metrics of the entry are shown in the following graphic. The table shows the number of entries on which the scores are based.



Metric	Whole archive (#Entries)	Similar resolution (#Entries, resolution range(Å))
R_{free}	130704	1659 (3.60-3.40)
Clashscore	141614	1036 (3.58-3.42)
Ramachandran outliers	138981	1005 (3.58-3.42)
Sidechain outliers	138945	1006 (3.58-3.42)
RSRZ outliers	127900	1559 (3.60-3.40)

The table below summarises the geometric issues observed across the polymeric chains and their fit to the electron density. The red, orange, yellow and green segments of the lower bar indicate the fraction of residues that contain outliers for ≥ 3 , 2, 1 and 0 types of geometric quality criteria respectively. A grey segment represents the fraction of residues that are not modelled. The numeric value for each fraction is indicated below the corresponding segment, with a dot representing fractions $\leq 5\%$. The upper red bar (where present) indicates the fraction of residues that have poor fit to the electron density. The numeric value is given above the bar.

Mol	Chain	Length	Quality of chain
1	A	353	
1	B	353	

The following table lists non-polymeric compounds, carbohydrate monomers and non-standard residues in protein, DNA, RNA chains that are outliers for geometric or electron-density-fit criteria:

Mol	Type	Chain	Res	Chirality	Geometry	Clashes	Electron density
3	OLC	A	403	-	-	-	X
3	OLC	A	404	-	-	-	X
3	OLC	B	402	-	-	-	X

2 Entry composition

There are 3 unique types of molecules in this entry. The entry contains 4611 atoms, of which 0 are hydrogens and 0 are deuteriums.

In the tables below, the ZeroOcc column contains the number of atoms modelled with zero occupancy, the AltConf column contains the number of residues with at least one atom in alternate conformation and the Trace column contains the number of residues modelled with at most 2 atoms.

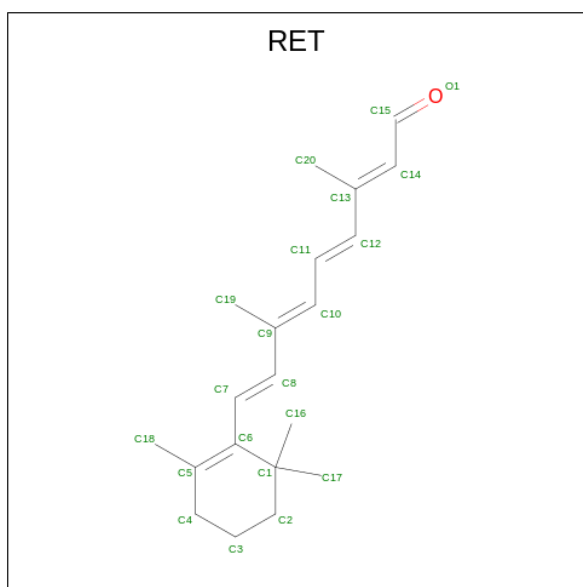
- Molecule 1 is a protein called Phosphodiesterase.

Mol	Chain	Residues	Atoms					ZeroOcc	AltConf	Trace
			Total	C	N	O	S			
1	A	278	2132	1403	341	368	20	0	0	0
1	B	310	2353	1533	382	418	20	0	0	0

There are 14 discrepancies between the modelled and reference sequences:

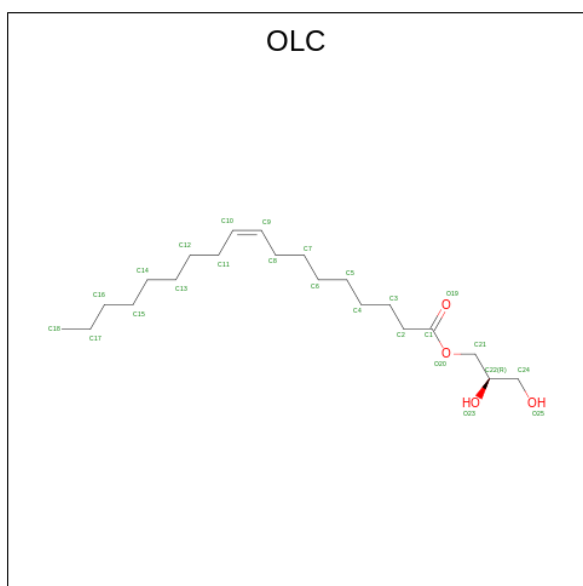
Chain	Residue	Modelled	Actual	Comment	Reference
A	32	MET	-	initiating methionine	UNP F2TZN0
A	379	GLU	-	expression tag	UNP F2TZN0
A	380	ASN	-	expression tag	UNP F2TZN0
A	381	LEU	-	expression tag	UNP F2TZN0
A	382	TYR	-	expression tag	UNP F2TZN0
A	383	PHE	-	expression tag	UNP F2TZN0
A	384	GLN	-	expression tag	UNP F2TZN0
B	32	MET	-	initiating methionine	UNP F2TZN0
B	379	GLU	-	expression tag	UNP F2TZN0
B	380	ASN	-	expression tag	UNP F2TZN0
B	381	LEU	-	expression tag	UNP F2TZN0
B	382	TYR	-	expression tag	UNP F2TZN0
B	383	PHE	-	expression tag	UNP F2TZN0
B	384	GLN	-	expression tag	UNP F2TZN0

- Molecule 2 is RETINAL (three-letter code: RET) (formula: C₂₀H₂₈O).



Mol	Chain	Residues	Atoms	ZeroOcc	AltConf
2	A	1	Total C 20 20	0	0
2	B	1	Total C 20 20	0	0

- Molecule 3 is (2R)-2,3-dihydroxypropyl (9Z)-octadec-9-enoate (three-letter code: OLC) (formula: C₂₁H₄₀O₄).



Mol	Chain	Residues	Atoms	ZeroOcc	AltConf
3	A	1	Total C 11 11	0	0

Continued on next page...

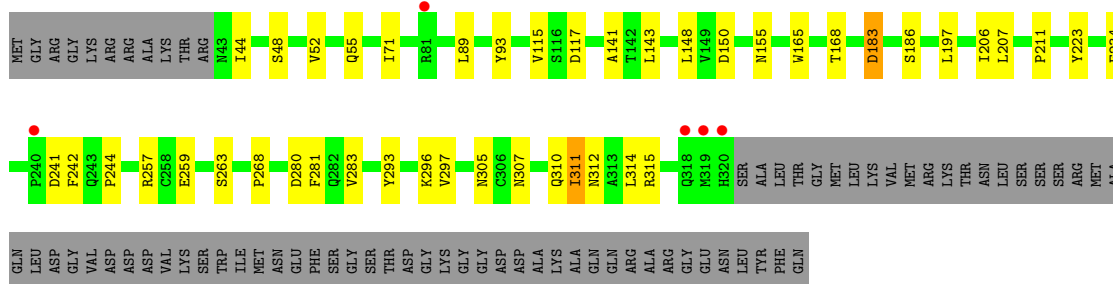
Continued from previous page...

Mol	Chain	Residues	Atoms			ZeroOcc	AltConf
3	A	1	Total	C	O	0	0
			25	21	4		
3	A	1	Total	C	O	0	0
			25	21	4		
3	B	1	Total	C	O	0	0
			25	21	4		

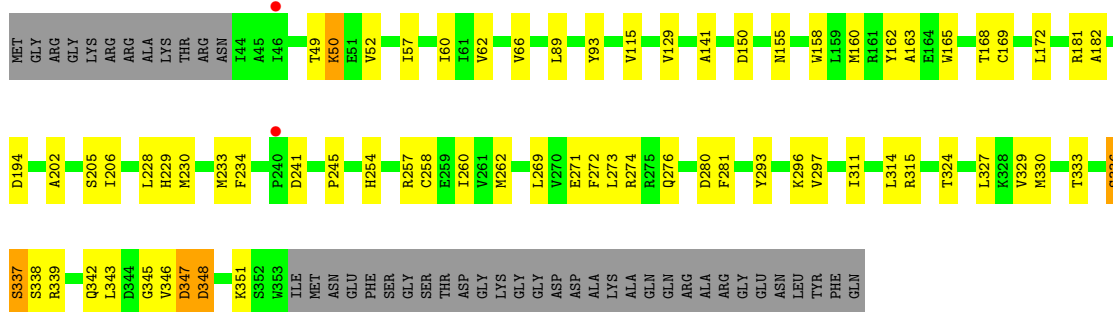
3 Residue-property plots [i](#)

These plots are drawn for all protein, RNA, DNA and oligosaccharide chains in the entry. The first graphic for a chain summarises the proportions of the various outlier classes displayed in the second graphic. The second graphic shows the sequence view annotated by issues in geometry and electron density. Residues are color-coded according to the number of geometric quality criteria for which they contain at least one outlier: green = 0, yellow = 1, orange = 2 and red = 3 or more. A red dot above a residue indicates a poor fit to the electron density ($RSRZ > 2$). Stretches of 2 or more consecutive residues without any outlier are shown as a green connector. Residues present in the sample, but not in the model, are shown in grey.

- Molecule 1: Phosphodiesterase



- Molecule 1: Phosphodiesterase



4 Data and refinement statistics

Property	Value	Source
Space group	I 2 2 2	Depositor
Cell constants a, b, c, α , β , γ	76.30Å 136.53Å 206.54Å 90.00° 90.00° 90.00°	Depositor
Resolution (Å)	49.40 – 3.50 49.40 – 3.50	Depositor EDS
% Data completeness (in resolution range)	97.8 (49.40-3.50) 85.5 (49.40-3.50)	Depositor EDS
R_{merge}	(Not available)	Depositor
R_{sym}	(Not available)	Depositor
$\langle I/\sigma(I) \rangle$ ¹	0.78 (at 3.48Å)	Xtrriage
Refinement program	PHENIX 1.16_3549	Depositor
R, R_{free}	0.266 , 0.314 0.266 , 0.315	Depositor DCC
R_{free} test set	688 reflections (5.01%)	wwPDB-VP
Wilson B-factor (Å ²)	38.1	Xtrriage
Anisotropy	0.541	Xtrriage
Bulk solvent k_{sol} (e/Å ³), B_{sol} (Å ²)	0.30 , 24.0	EDS
L-test for twinning ²	$\langle L \rangle = 0.47$, $\langle L^2 \rangle = 0.30$	Xtrriage
Estimated twinning fraction	No twinning to report.	Xtrriage
F_o, F_c correlation	0.84	EDS
Total number of atoms	4611	wwPDB-VP
Average B, all atoms (Å ²)	33.0	wwPDB-VP

Xtrriage's analysis on translational NCS is as follows: *The analyses of the Patterson function reveals a significant off-origin peak that is 23.41 % of the origin peak, indicating pseudo-translational symmetry. The chance of finding a peak of this or larger height randomly in a structure without pseudo-translational symmetry is equal to 4.6880e-03. The detected translational NCS is most likely also responsible for the elevated intensity ratio.*

¹Intensities estimated from amplitudes.

²Theoretical values of $\langle |L| \rangle$, $\langle L^2 \rangle$ for acentric reflections are 0.5, 0.333 respectively for untwinned datasets, and 0.375, 0.2 for perfectly twinned datasets.

5 Model quality

5.1 Standard geometry

Bond lengths and bond angles in the following residue types are not validated in this section: OLC, RET

The Z score for a bond length (or angle) is the number of standard deviations the observed value is removed from the expected value. A bond length (or angle) with $|Z| > 5$ is considered an outlier worth inspection. RMSZ is the root-mean-square of all Z scores of the bond lengths (or angles).

Mol	Chain	Bond lengths		Bond angles	
		RMSZ	# Z >5	RMSZ	# Z >5
1	A	0.25	0/2192	0.39	0/2993
1	B	0.24	0/2412	0.39	0/3287
All	All	0.24	0/4604	0.39	0/6280

There are no bond length outliers.

There are no bond angle outliers.

There are no chirality outliers.

There are no planarity outliers.

5.2 Too-close contacts

In the following table, the Non-H and H(model) columns list the number of non-hydrogen atoms and hydrogen atoms in the chain respectively. The H(added) column lists the number of hydrogen atoms added and optimized by MolProbity. The Clashes column lists the number of clashes within the asymmetric unit, whereas Symm-Clashes lists symmetry-related clashes.

Mol	Chain	Non-H	H(model)	H(added)	Clashes	Symm-Clashes
1	A	2132	0	2097	26	0
1	B	2353	0	2315	44	0
2	A	20	0	27	6	0
2	B	20	0	27	5	0
3	A	61	0	99	1	0
3	B	25	0	40	1	0
All	All	4611	0	4605	74	0

The all-atom clashscore is defined as the number of clashes found per 1000 atoms (including hydrogen atoms). The all-atom clashscore for this structure is 8.

All (74) close contacts within the same asymmetric unit are listed below, sorted by their clash

magnitude.

Atom-1	Atom-2	Interatomic distance (Å)	Clash overlap (Å)
2:A:401:RET:H8	2:A:401:RET:H181	1.51	0.92
2:B:401:RET:H8	2:B:401:RET:H181	1.56	0.85
1:A:71:ILE:HD11	1:A:143:LEU:HD13	1.71	0.73
1:B:181:ARG:NH2	1:B:245:PRO:O	2.22	0.70
1:B:168:THR:HG21	1:B:296:LYS:HE3	1.75	0.68
1:A:115:VAL:HG22	1:B:311:ILE:HD13	1.74	0.67
1:B:150:ASP:HB2	1:B:205:SER:HB3	1.76	0.67
1:B:343:LEU:HD23	1:B:345:GLY:H	1.58	0.66
1:A:165:TRP:CD1	2:A:401:RET:H14	2.31	0.66
1:A:311:ILE:HB	1:B:311:ILE:HG12	1.81	0.62
1:A:280:ASP:OD1	1:A:281:PHE:N	2.33	0.62
1:B:271:GLU:OE2	1:B:274:ARG:NH2	2.33	0.61
1:A:268:PRO:HB3	2:A:401:RET:H183	1.84	0.60
1:A:93:TYR:HB2	1:A:141:ALA:HB2	1.83	0.60
1:B:343:LEU:HB3	1:B:346:VAL:HG22	1.84	0.58
1:B:158:TRP:O	1:B:160:MET:N	2.34	0.57
1:A:293:TYR:CZ	1:A:297:VAL:HG21	2.41	0.55
1:A:241:ASP:N	1:A:241:ASP:OD1	2.41	0.54
1:A:89:LEU:HD11	1:A:281:PHE:HE2	1.73	0.54
1:B:337:SER:H	1:B:343:LEU:HG	1.73	0.54
1:A:312:ASN:OD1	1:B:115:VAL:HA	2.07	0.53
1:B:150:ASP:OD1	1:B:155:ASN:N	2.42	0.52
1:A:168:THR:HG21	1:A:296:LYS:HE3	1.91	0.52
1:B:89:LEU:HD13	1:B:158:TRP:HZ2	1.74	0.52
1:B:343:LEU:HD23	1:B:345:GLY:N	2.26	0.50
1:A:148:LEU:HD13	1:A:206:ILE:HD11	1.94	0.50
1:B:271:GLU:HG3	2:B:401:RET:H173	1.93	0.50
1:B:230:MET:HE1	1:B:260:ILE:HG21	1.94	0.49
1:A:280:ASP:HB3	1:A:283:VAL:HG23	1.94	0.49
1:B:258:CYS:O	1:B:262:MET:HG2	2.14	0.48
1:A:150:ASP:OD1	1:A:155:ASN:N	2.47	0.48
1:A:259:GLU:O	1:A:263:SER:OG	2.24	0.48
1:B:336:SER:O	1:B:338:SER:N	2.46	0.47
1:B:324:THR:HA	1:B:327:LEU:HB2	1.96	0.47
2:B:401:RET:H7	2:B:401:RET:H161	1.58	0.47
1:B:50:LYS:HD2	1:B:50:LYS:H	1.81	0.46
2:B:401:RET:H191	2:B:401:RET:H11	1.59	0.46
2:A:401:RET:H7	2:A:401:RET:H161	1.65	0.46
1:B:165:TRP:CD1	2:B:401:RET:H14	2.50	0.46
1:B:241:ASP:N	1:B:241:ASP:OD1	2.48	0.46
1:B:347:ASP:O	1:B:351:LYS:HG2	2.16	0.46

Continued on next page...

Continued from previous page...

Atom-1	Atom-2	Interatomic distance (Å)	Clash overlap (Å)
1:B:163:ALA:HB2	3:B:402:OLC:H13A	1.99	0.45
1:A:48:SER:O	1:A:52:VAL:HG13	2.17	0.45
1:A:311:ILE:HG13	1:B:314:LEU:HD11	1.98	0.45
1:A:207:LEU:HD13	1:A:211:PRO:HB2	2.00	0.44
1:A:183:ASP:N	1:A:183:ASP:OD1	2.50	0.44
1:B:182:ALA:HB2	1:B:233:MET:HG3	1.99	0.44
1:A:234:PHE:CD2	1:A:257:ARG:HB3	2.53	0.44
1:A:197:LEU:HD11	1:A:223:TYR:HA	1.99	0.43
1:A:307:ASN:O	1:A:311:ILE:HG22	2.18	0.43
2:A:401:RET:H11	2:A:401:RET:H191	1.58	0.43
1:B:129:VAL:HG11	1:B:172:LEU:HD21	1.99	0.43
1:B:329:VAL:O	1:B:333:THR:HG23	2.18	0.43
1:B:50:LYS:HE2	1:B:50:LYS:HB3	1.77	0.43
1:B:339:ARG:HH12	1:B:342:GLN:HA	1.84	0.43
1:B:57:ILE:HA	1:B:60:ILE:HG12	2.01	0.42
1:B:93:TYR:HB2	1:B:141:ALA:HB2	2.02	0.42
1:A:183:ASP:HB2	1:A:186:SER:H	1.85	0.42
1:B:269:LEU:O	1:B:273:LEU:HG	2.19	0.42
1:B:129:VAL:HG13	1:B:168:THR:HG23	2.02	0.42
1:A:242:PHE:CE2	1:A:244:PRO:HD2	2.55	0.41
1:B:254:HIS:HA	1:B:257:ARG:HG2	2.02	0.41
1:B:169:CYS:HB3	1:B:194:ASP:OD2	2.20	0.41
1:B:272:PHE:O	1:B:276:GLN:HG2	2.19	0.41
1:B:280:ASP:OD1	1:B:281:PHE:N	2.53	0.41
1:B:49:THR:O	1:B:52:VAL:HG22	2.20	0.41
1:A:311:ILE:O	1:A:315:ARG:HG2	2.21	0.41
1:B:66:VAL:HG11	1:B:163:ALA:HB1	2.03	0.41
2:A:401:RET:H181	2:A:401:RET:C8	2.32	0.41
1:B:162:TYR:CD1	1:B:202:ALA:HB2	2.55	0.40
1:B:293:TYR:CZ	1:B:297:VAL:HG21	2.56	0.40
1:B:234:PHE:CD2	1:B:257:ARG:HB3	2.56	0.40
3:A:404:OLC:H17A	3:A:404:OLC:H14	1.82	0.40
1:B:348:ASP:OD1	1:B:348:ASP:N	2.54	0.40

There are no symmetry-related clashes.

5.3 Torsion angles [i](#)

5.3.1 Protein backbone [i](#)

In the following table, the Percentiles column shows the percent Ramachandran outliers of the chain as a percentile score with respect to all X-ray entries followed by that with respect to entries of similar resolution.

The Analysed column shows the number of residues for which the backbone conformation was analysed, and the total number of residues.

Mol	Chain	Analysed	Favoured	Allowed	Outliers	Percentiles	
1	A	276/353 (78%)	266 (96%)	9 (3%)	1 (0%)	34	72
1	B	308/353 (87%)	292 (95%)	15 (5%)	1 (0%)	41	75
All	All	584/706 (83%)	558 (96%)	24 (4%)	2 (0%)	41	75

All (2) Ramachandran outliers are listed below:

Mol	Chain	Res	Type
1	A	44	ILE
1	B	337	SER

5.3.2 Protein sidechains [i](#)

In the following table, the Percentiles column shows the percent sidechain outliers of the chain as a percentile score with respect to all X-ray entries followed by that with respect to entries of similar resolution.

The Analysed column shows the number of residues for which the sidechain conformation was analysed, and the total number of residues.

Mol	Chain	Analysed	Rotameric	Outliers	Percentiles	
1	A	220/289 (76%)	213 (97%)	7 (3%)	39	69
1	B	244/289 (84%)	234 (96%)	10 (4%)	30	63
All	All	464/578 (80%)	447 (96%)	17 (4%)	34	65

All (17) residues with a non-rotameric sidechain are listed below:

Mol	Chain	Res	Type
1	A	55	GLN
1	A	117	ASP
1	A	183	ASP
1	A	305	ASN

Continued on next page...

Continued from previous page...

Mol	Chain	Res	Type
1	A	310	GLN
1	A	311	ILE
1	A	314	LEU
1	B	50	LYS
1	B	62	VAL
1	B	206	ILE
1	B	228	LEU
1	B	229	HIS
1	B	315	ARG
1	B	330	MET
1	B	336	SER
1	B	347	ASP
1	B	348	ASP

Sometimes sidechains can be flipped to improve hydrogen bonding and reduce clashes. There are no such sidechains identified.

5.3.3 RNA [i](#)

There are no RNA molecules in this entry.

5.4 Non-standard residues in protein, DNA, RNA chains [i](#)

There are no non-standard protein/DNA/RNA residues in this entry.

5.5 Carbohydrates [i](#)

There are no monosaccharides in this entry.

5.6 Ligand geometry [i](#)

6 ligands are modelled in this entry.

In the following table, the Counts columns list the number of bonds (or angles) for which Mogul statistics could be retrieved, the number of bonds (or angles) that are observed in the model and the number of bonds (or angles) that are defined in the Chemical Component Dictionary. The Link column lists molecule types, if any, to which the group is linked. The Z score for a bond length (or angle) is the number of standard deviations the observed value is removed from the expected value. A bond length (or angle) with $|Z| > 2$ is considered an outlier worth inspection. RMSZ is the root-mean-square of all Z scores of the bond lengths (or angles).

Mol	Type	Chain	Res	Link	Bond lengths			Bond angles		
					Counts	RMSZ	# Z > 2	Counts	RMSZ	# Z > 2
3	OLC	A	402	-	10,10,24	0.28	0	9,9,25	0.75	0
2	RET	A	401	1	20,20,21	0.88	0	27,27,28	1.79	5 (18%)
3	OLC	A	404	-	24,24,24	0.94	1 (4%)	25,25,25	0.84	1 (4%)
3	OLC	A	403	-	24,24,24	0.94	1 (4%)	25,25,25	0.92	1 (4%)
3	OLC	B	402	-	24,24,24	0.92	1 (4%)	25,25,25	0.90	1 (4%)
2	RET	B	401	1	20,20,21	0.83	0	27,27,28	1.85	6 (22%)

In the following table, the Chirals column lists the number of chiral outliers, the number of chiral centers analysed, the number of these observed in the model and the number defined in the Chemical Component Dictionary. Similar counts are reported in the Torsion and Rings columns. '-' means no outliers of that kind were identified.

Mol	Type	Chain	Res	Link	Chirals	Torsions	Rings
3	OLC	A	402	-	-	3/8/8/24	-
2	RET	A	401	1	-	4/13/30/31	0/1/1/1
3	OLC	A	404	-	-	13/24/24/24	-
3	OLC	A	403	-	-	8/24/24/24	-
3	OLC	B	402	-	-	5/24/24/24	-
2	RET	B	401	1	-	4/13/30/31	0/1/1/1

All (3) bond length outliers are listed below:

Mol	Chain	Res	Type	Atoms	Z	Observed(Å)	Ideal(Å)
3	A	403	OLC	O20-C1	4.35	1.46	1.33
3	A	404	OLC	O20-C1	4.34	1.46	1.33
3	B	402	OLC	O20-C1	4.29	1.45	1.33

All (14) bond angle outliers are listed below:

Mol	Chain	Res	Type	Atoms	Z	Observed(°)	Ideal(°)
2	B	401	RET	C11-C10-C9	-6.37	118.22	127.31
2	A	401	RET	C11-C10-C9	-6.32	118.30	127.31
2	A	401	RET	C19-C9-C10	-3.22	118.41	122.92
2	A	401	RET	C8-C9-C10	3.16	123.79	118.94
2	B	401	RET	C19-C9-C10	-3.03	118.68	122.92
3	A	403	OLC	O20-C1-C2	2.94	121.14	111.91
3	B	402	OLC	O20-C1-C2	2.70	120.38	111.91
3	A	404	OLC	O20-C1-C2	2.64	120.19	111.91
2	B	401	RET	C7-C6-C5	2.60	127.76	121.46

Continued on next page...

Continued from previous page...

Mol	Chain	Res	Type	Atoms	Z	Observed(°)	Ideal(°)
2	A	401	RET	C7-C6-C5	2.60	127.75	121.46
2	B	401	RET	C8-C9-C10	2.46	122.71	118.94
2	B	401	RET	C11-C12-C13	-2.42	119.63	126.42
2	B	401	RET	C7-C8-C9	-2.20	122.91	126.23
2	A	401	RET	C1-C6-C5	-2.06	119.71	122.61

There are no chirality outliers.

All (37) torsion outliers are listed below:

Mol	Chain	Res	Type	Atoms
2	A	401	RET	C1-C6-C7-C8
2	A	401	RET	C5-C6-C7-C8
2	A	401	RET	C7-C8-C9-C10
2	A	401	RET	C7-C8-C9-C19
2	B	401	RET	C1-C6-C7-C8
2	B	401	RET	C5-C6-C7-C8
2	B	401	RET	C7-C8-C9-C10
2	B	401	RET	C7-C8-C9-C19
3	A	404	OLC	O20-C21-C22-O23
3	A	403	OLC	C1-C2-C3-C4
3	B	402	OLC	C10-C11-C12-C13
3	B	402	OLC	C5-C6-C7-C8
3	A	403	OLC	O20-C21-C22-O23
3	B	402	OLC	C13-C14-C15-C16
3	A	402	OLC	C12-C13-C14-C15
3	A	403	OLC	O20-C21-C22-C24
3	A	404	OLC	C13-C14-C15-C16
3	A	403	OLC	C5-C6-C7-C8
3	A	404	OLC	C5-C6-C7-C8
3	B	402	OLC	C6-C7-C8-C9
3	A	404	OLC	O20-C21-C22-C24
3	A	402	OLC	C13-C14-C15-C16
3	A	404	OLC	O23-C22-C24-O25
3	A	402	OLC	C11-C12-C13-C14
3	A	404	OLC	C14-C15-C16-C17
3	A	403	OLC	C7-C8-C9-C10
3	A	404	OLC	C1-C2-C3-C4
3	A	404	OLC	C2-C1-O20-C21
3	A	404	OLC	C11-C12-C13-C14
3	A	403	OLC	O20-C1-C2-C3
3	A	404	OLC	C7-C8-C9-C10
3	A	403	OLC	C3-C4-C5-C6

Continued on next page...

Continued from previous page...

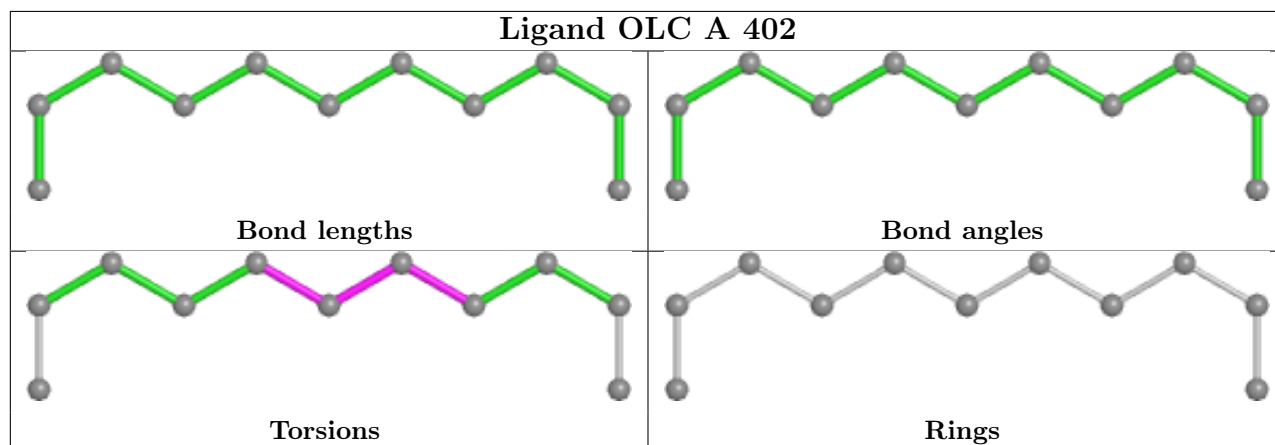
Mol	Chain	Res	Type	Atoms
3	B	402	OLC	C7-C8-C9-C10
3	A	404	OLC	O19-C1-O20-C21
3	A	404	OLC	C21-C22-C24-O25
3	A	403	OLC	O19-C1-C2-C3
3	A	404	OLC	C4-C5-C6-C7

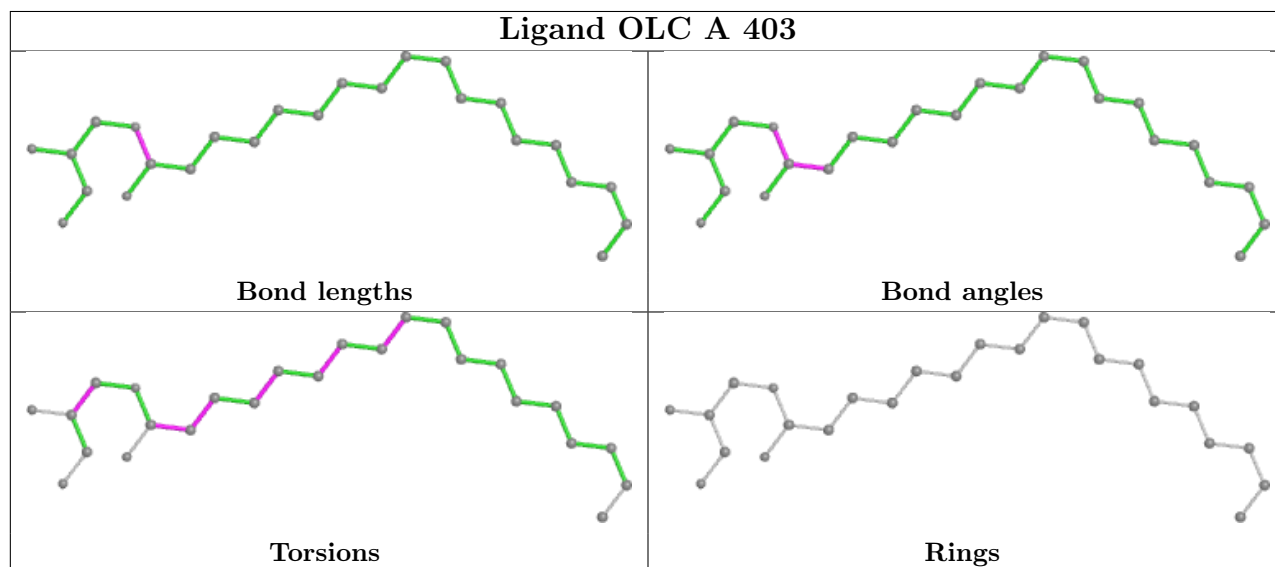
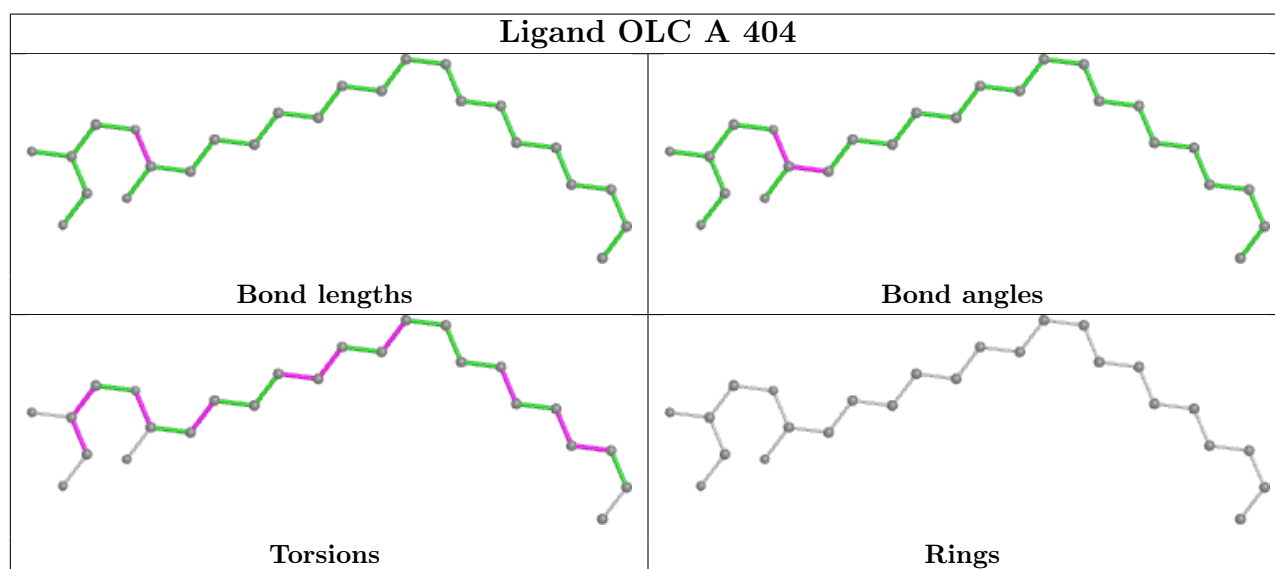
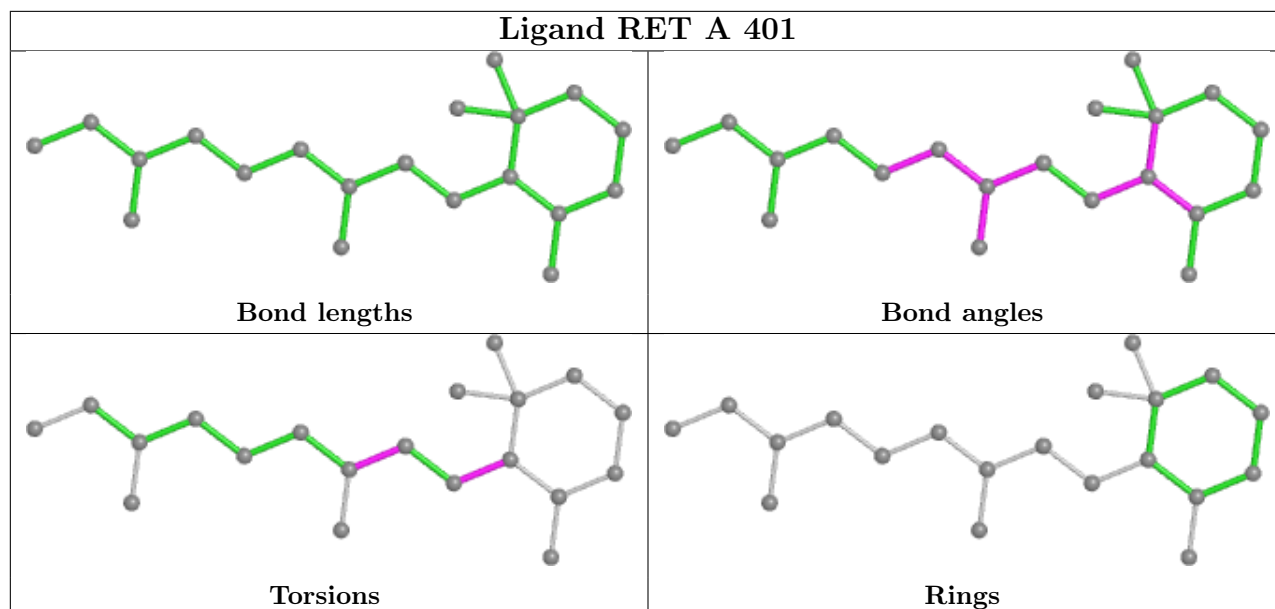
There are no ring outliers.

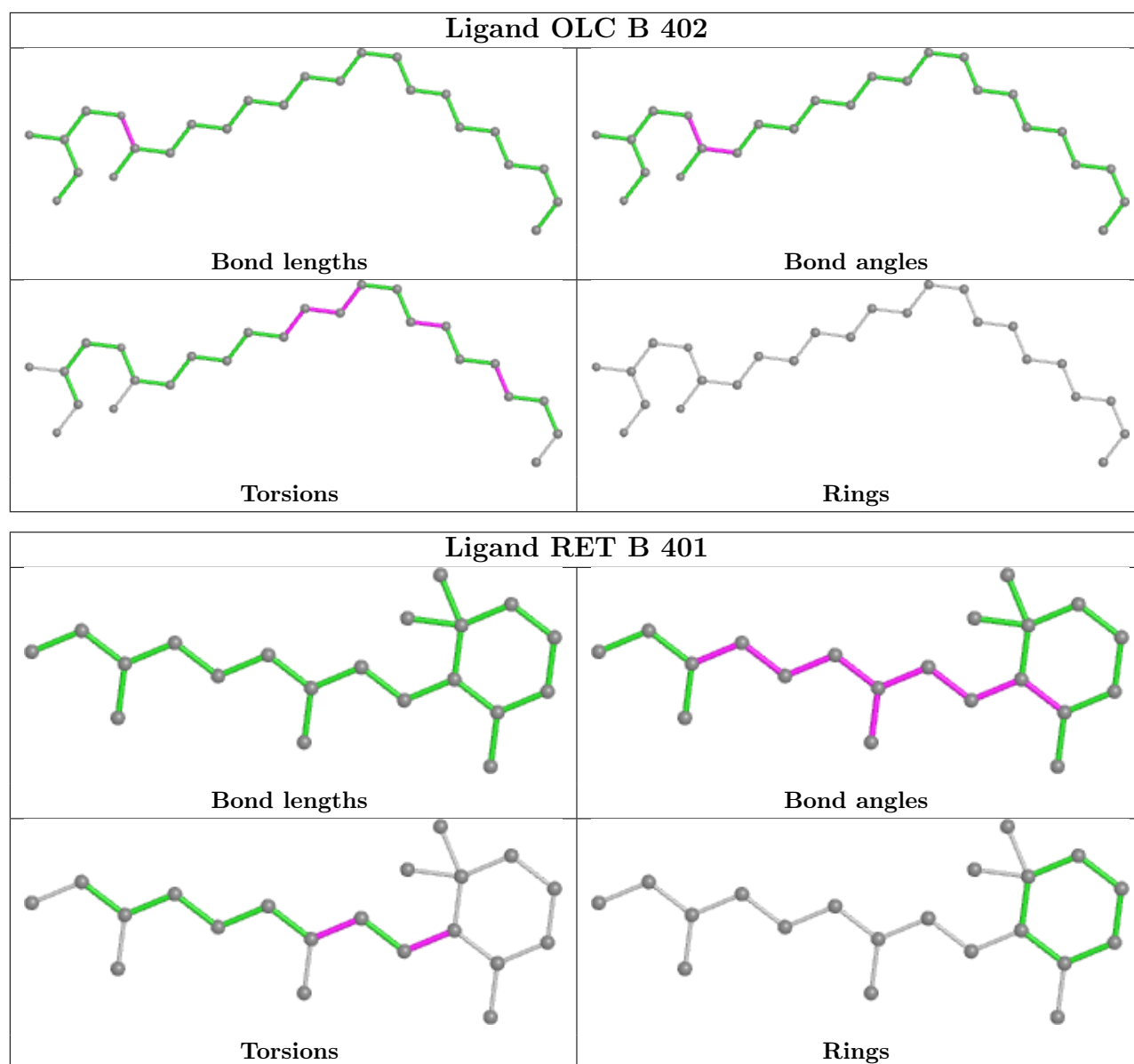
4 monomers are involved in 13 short contacts:

Mol	Chain	Res	Type	Clashes	Symm-Clashes
2	A	401	RET	6	0
3	A	404	OLC	1	0
3	B	402	OLC	1	0
2	B	401	RET	5	0

The following is a two-dimensional graphical depiction of Mogul quality analysis of bond lengths, bond angles, torsion angles, and ring geometry for all instances of the Ligand of Interest. In addition, ligands with molecular weight > 250 and outliers as shown on the validation Tables will also be included. For torsion angles, if less than 5% of the Mogul distribution of torsion angles is within 10 degrees of the torsion angle in question, then that torsion angle is considered an outlier. Any bond that is central to one or more torsion angles identified as an outlier by Mogul will be highlighted in the graph. For rings, the root-mean-square deviation (RMSD) between the ring in question and similar rings identified by Mogul is calculated over all ring torsion angles. If the average RMSD is greater than 60 degrees and the minimal RMSD between the ring in question and any Mogul-identified rings is also greater than 60 degrees, then that ring is considered an outlier. The outliers are highlighted in purple. The color gray indicates Mogul did not find sufficient equivalents in the CSD to analyse the geometry.







5.7 Other polymers [i](#)

There are no such residues in this entry.

5.8 Polymer linkage issues [i](#)

There are no chain breaks in this entry.

6 Fit of model and data [i](#)

6.1 Protein, DNA and RNA chains [i](#)

In the following table, the column labelled ‘#RSRZ> 2’ contains the number (and percentage) of RSRZ outliers, followed by percent RSRZ outliers for the chain as percentile scores relative to all X-ray entries and entries of similar resolution. The OWAB column contains the minimum, median, 95th percentile and maximum values of the occupancy-weighted average B-factor per residue. The column labelled ‘Q< 0.9’ lists the number of (and percentage) of residues with an average occupancy less than 0.9.

Mol	Chain	Analysed	<RSRZ>	#RSRZ>2	OWAB(Å ²)	Q<0.9
1	A	278/353 (78%)	-0.14	5 (1%) 68 62	17, 29, 59, 91	0
1	B	310/353 (87%)	-0.10	2 (0%) 89 86	14, 29, 60, 74	0
All	All	588/706 (83%)	-0.12	7 (1%) 79 73	14, 29, 59, 91	0

All (7) RSRZ outliers are listed below:

Mol	Chain	Res	Type	RSRZ
1	A	320	HIS	3.7
1	A	240	PRO	2.7
1	B	46	ILE	2.5
1	B	240	PRO	2.4
1	A	318	GLN	2.2
1	A	319	MET	2.2
1	A	81	ARG	2.1

6.2 Non-standard residues in protein, DNA, RNA chains [i](#)

There are no non-standard protein/DNA/RNA residues in this entry.

6.3 Carbohydrates [i](#)

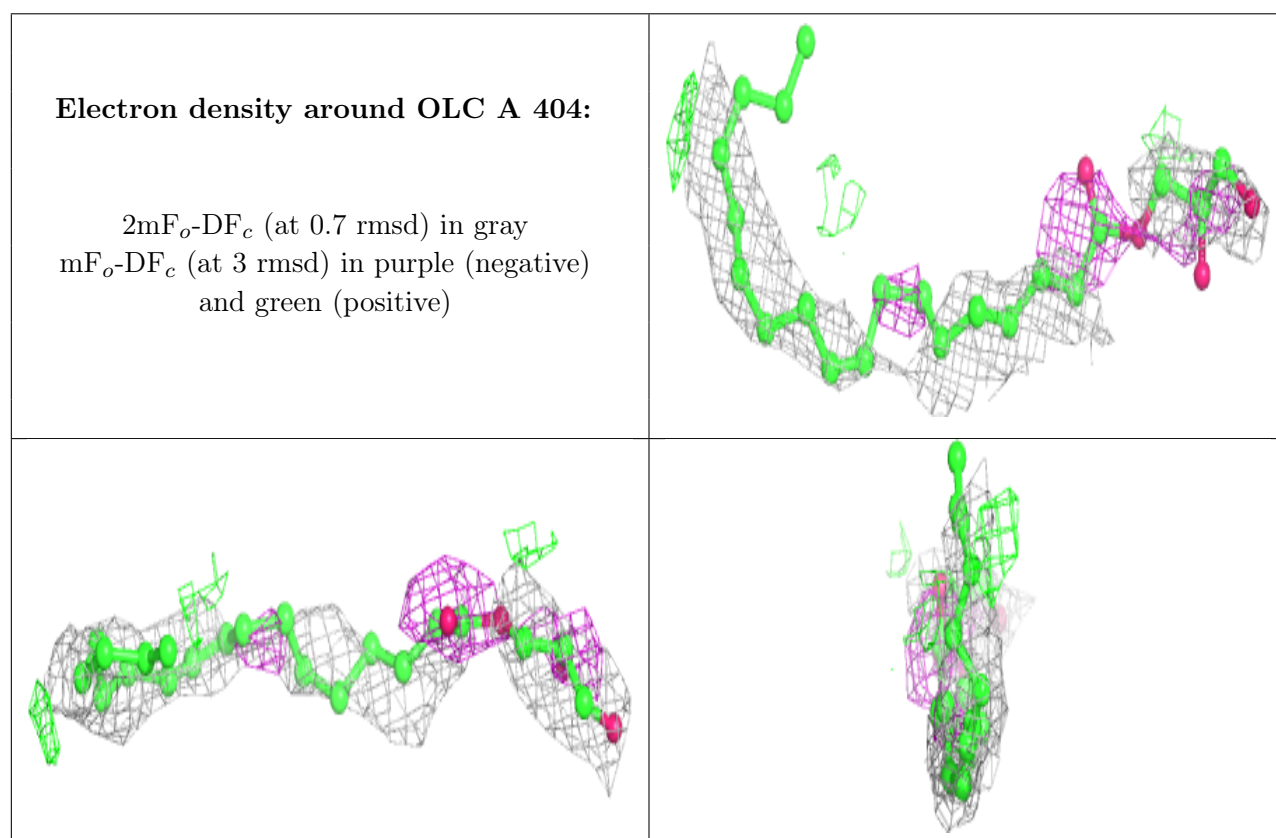
There are no monosaccharides in this entry.

6.4 Ligands [i](#)

In the following table, the Atoms column lists the number of modelled atoms in the group and the number defined in the chemical component dictionary. The B-factors column lists the minimum, median, 95th percentile and maximum values of B factors of atoms in the group. The column labelled ‘Q< 0.9’ lists the number of atoms with occupancy less than 0.9.

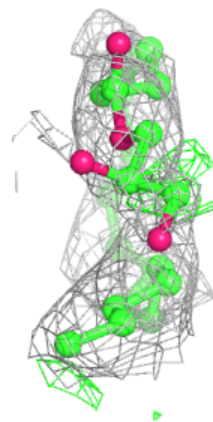
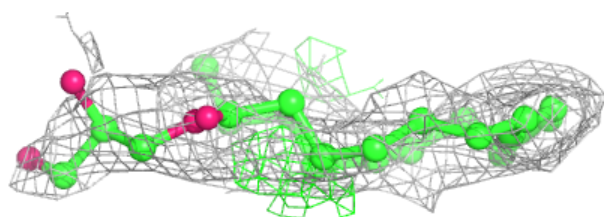
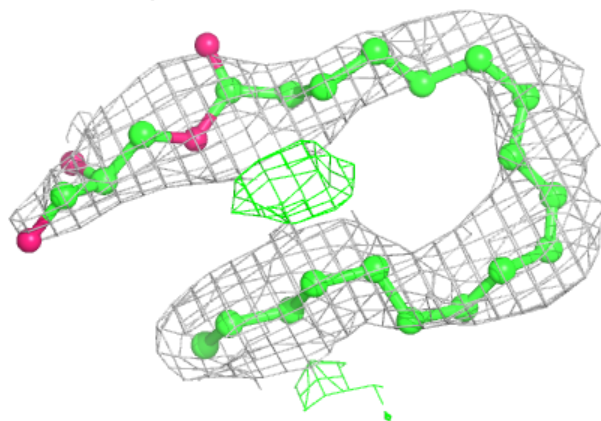
Mol	Type	Chain	Res	Atoms	RSCC	RSR	B-factors(\AA^2)	Q<0.9
3	OLC	A	404	25/25	0.66	0.58	23,32,46,51	0
3	OLC	A	403	25/25	0.72	0.44	26,34,51,53	0
3	OLC	B	402	25/25	0.77	0.45	17,27,37,40	0
2	RET	A	401	20/21	0.86	0.33	20,27,29,36	0
2	RET	B	401	20/21	0.87	0.34	17,21,24,25	0
3	OLC	A	402	11/25	0.91	0.23	14,15,18,19	0

The following is a graphical depiction of the model fit to experimental electron density of all instances of the Ligand of Interest. In addition, ligands with molecular weight > 250 and outliers as shown on the geometry validation Tables will also be included. Each fit is shown from different orientation to approximate a three-dimensional view.

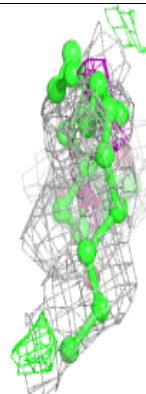
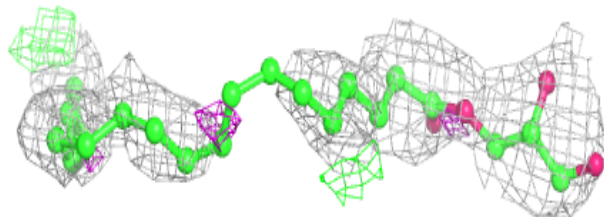
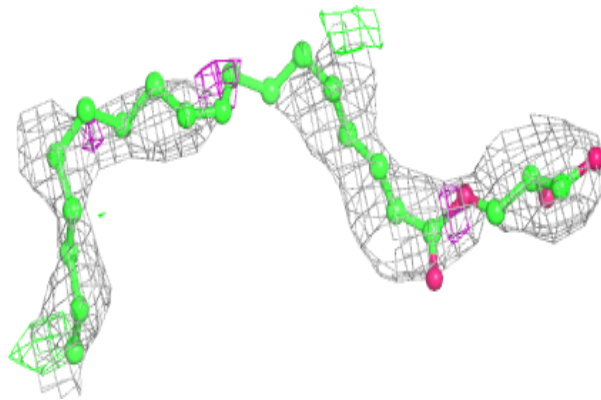


Electron density around OLC A 403:

$2mF_o-DF_c$ (at 0.7 rmsd) in gray
 mF_o-DF_c (at 3 rmsd) in purple (negative)
and green (positive)

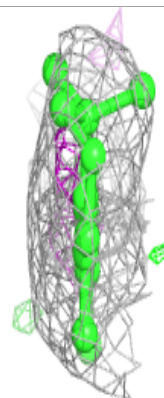
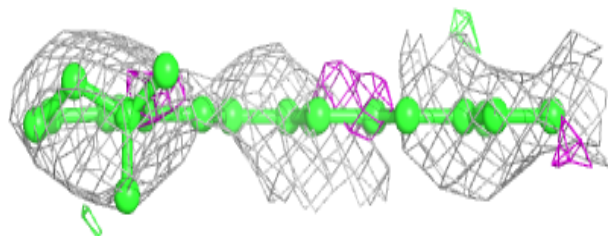
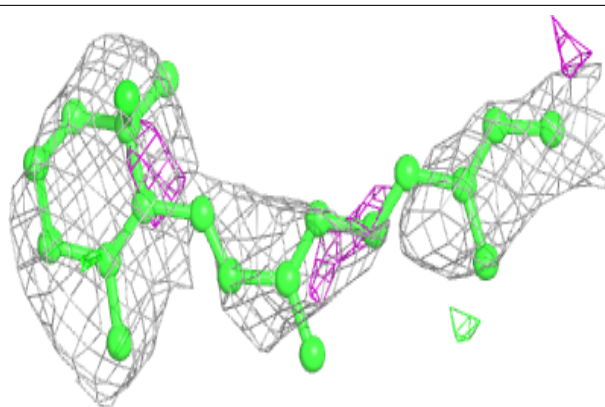
**Electron density around OLC B 402:**

$2mF_o-DF_c$ (at 0.7 rmsd) in gray
 mF_o-DF_c (at 3 rmsd) in purple (negative)
and green (positive)

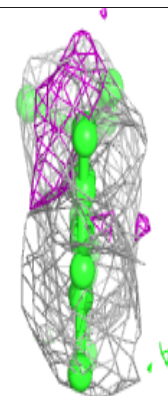
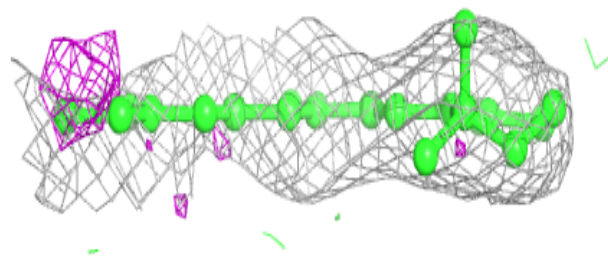
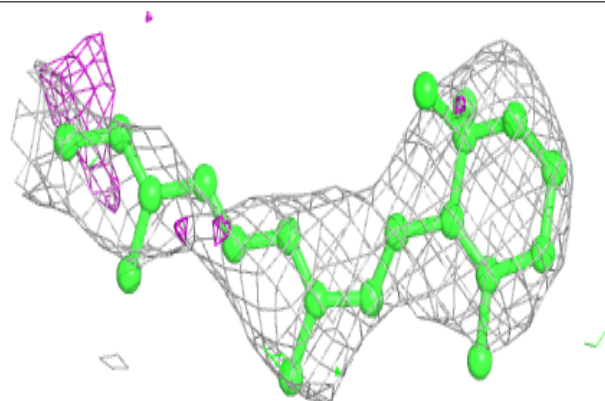


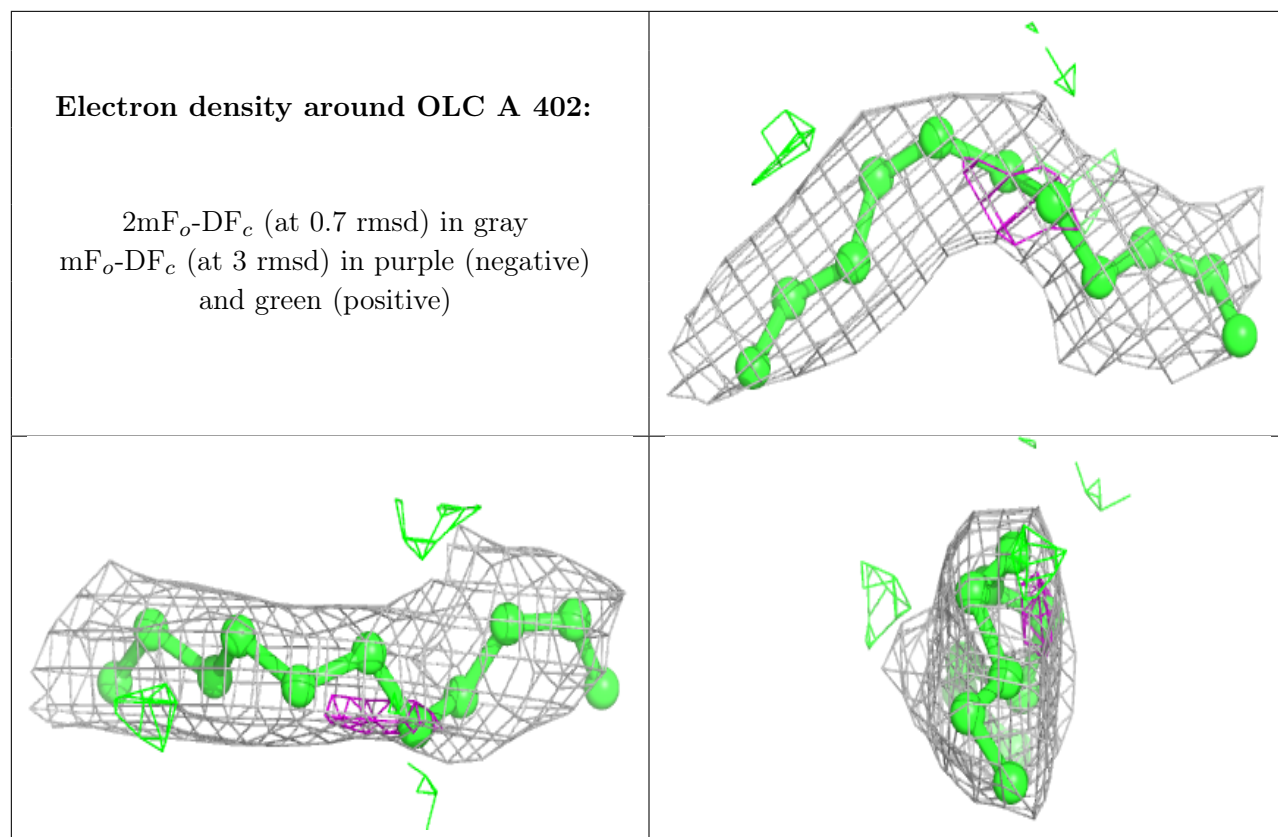
Electron density around RET A 401:

$2mF_o-DF_c$ (at 0.7 rmsd) in gray
 mF_o-DF_c (at 3 rmsd) in purple (negative)
and green (positive)

**Electron density around RET B 401:**

$2mF_o-DF_c$ (at 0.7 rmsd) in gray
 mF_o-DF_c (at 3 rmsd) in purple (negative)
and green (positive)





6.5 Other polymers [i](#)

There are no such residues in this entry.