



wwPDB X-ray Structure Validation Summary Report ⓘ

May 21, 2020 – 07:14 am BST

PDB ID : 5CTE
Title : Humanized yeast ACC carboxyltransferase domain bound to 2,2-dimethylpropyl (1S)-1-methyl-8-[(7-methyl-1H-indazol-5-yl)carbonyl]-2,8-diazaspiro[4.5]decane-2-carboxylate
Authors : Vajdos, F.F.
Deposited on : 2015-07-23
Resolution : 2.34 Å(reported)

This is a wwPDB X-ray Structure Validation Summary Report for a publicly released PDB entry.

We welcome your comments at validation@mail.wwpdb.org

A user guide is available at

<https://www.wwpdb.org/validation/2017/XrayValidationReportHelp>

with specific help available everywhere you see the ⓘ symbol.

The following versions of software and data (see [references ⓘ](#)) were used in the production of this report:

MolProbity : 4.02b-467
Mogul : 1.8.5 (274361), CSD as541be (2020)
Xtriage (Phenix) : 1.13
EDS : 2.11
buster-report : 1.1.7 (2018)
Percentile statistics : 20191225.v01 (using entries in the PDB archive December 25th 2019)
Refmac : 5.8.0158
CCP4 : 7.0.044 (Gargrove)
Ideal geometry (proteins) : Engh & Huber (2001)
Ideal geometry (DNA, RNA) : Parkinson et al. (1996)
Validation Pipeline (wwPDB-VP) : 2.11

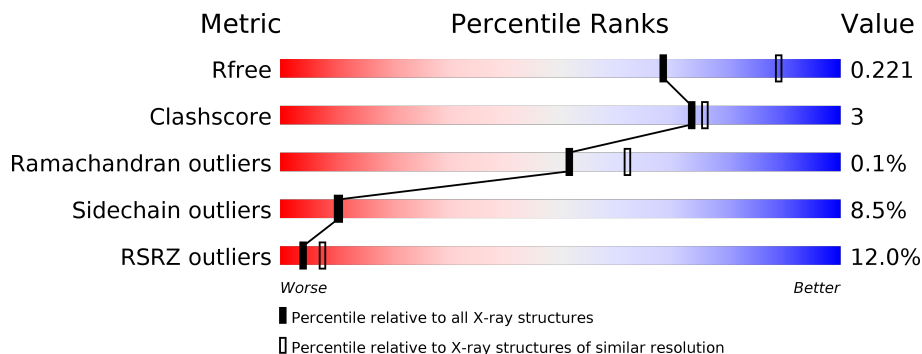
1 Overall quality at a glance

The following experimental techniques were used to determine the structure:

X-RAY DIFFRACTION

The reported resolution of this entry is 2.34 Å.

Percentile scores (ranging between 0-100) for global validation metrics of the entry are shown in the following graphic. The table shows the number of entries on which the scores are based.



Metric	Whole archive (#Entries)	Similar resolution (#Entries, resolution range(Å))
R_{free}	130704	2096 (2.36-2.32)
Clashscore	141614	2193 (2.36-2.32)
Ramachandran outliers	138981	2159 (2.36-2.32)
Sidechain outliers	138945	2160 (2.36-2.32)
RSRZ outliers	127900	2067 (2.36-2.32)

The table below summarises the geometric issues observed across the polymeric chains and their fit to the electron density. The red, orange, yellow and green segments on the lower bar indicate the fraction of residues that contain outliers for ≥ 3 , 2, 1 and 0 types of geometric quality criteria respectively. A grey segment represents the fraction of residues that are not modelled. The numeric value for each fraction is indicated below the corresponding segment, with a dot representing fractions $\leq 5\%$. The upper red bar (where present) indicates the fraction of residues that have poor fit to the electron density. The numeric value is given above the bar.

Mol	Chain	Length	Quality of chain
1	B	769	 14% 80% 14% • 5%
1	C	769	 9% 81% 12% • 6%

2 Entry composition [i](#)

There are 4 unique types of molecules in this entry. The entry contains 12599 atoms, of which 68 are hydrogens and 0 are deuteriums.

In the tables below, the ZeroOcc column contains the number of atoms modelled with zero occupancy, the AltConf column contains the number of residues with at least one atom in alternate conformation and the Trace column contains the number of residues modelled with at most 2 atoms.

- Molecule 1 is a protein called Acetyl-CoA carboxylase.

Mol	Chain	Residues	Atoms					ZeroOcc	AltConf	Trace
			Total	C	N	O	S			
1	B	728	5796	3687	1000	1092	17	0	1	0
1	C	721	5731	3638	990	1085	18	0	0	0

There are 40 discrepancies between the modelled and reference sequences:

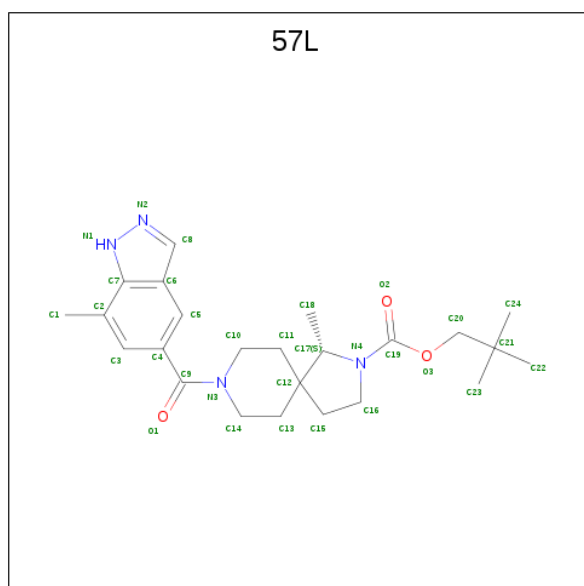
Chain	Residue	Modelled	Actual	Comment	Reference
B	1473	MET	-	expression tag	UNP Q00955
B	1474	ALA	-	expression tag	UNP Q00955
B	1475	SER	-	expression tag	UNP Q00955
B	1760	SER	PRO	engineered mutation	UNP Q00955
B	1762	LEU	ILE	engineered mutation	UNP Q00955
B	1765	VAL	MET	engineered mutation	UNP Q00955
B	1919	GLN	GLU	engineered mutation	UNP Q00955
B	1920	ALA	PRO	engineered mutation	UNP Q00955
B	1925	PHE	HIS	engineered mutation	UNP Q00955
B	2028	GLU	GLN	engineered mutation	UNP Q00955
B	2030	THR	MET	engineered mutation	UNP Q00955
B	2032	GLU	GLY	engineered mutation	UNP Q00955
B	2234	LEU	-	expression tag	UNP Q00955
B	2235	GLU	-	expression tag	UNP Q00955
B	2236	HIS	-	expression tag	UNP Q00955
B	2237	HIS	-	expression tag	UNP Q00955
B	2238	HIS	-	expression tag	UNP Q00955
B	2239	HIS	-	expression tag	UNP Q00955
B	2240	HIS	-	expression tag	UNP Q00955
B	2241	HIS	-	expression tag	UNP Q00955
C	1473	MET	-	expression tag	UNP Q00955
C	1474	ALA	-	expression tag	UNP Q00955
C	1475	SER	-	expression tag	UNP Q00955
C	1760	SER	PRO	engineered mutation	UNP Q00955
C	1762	LEU	ILE	engineered mutation	UNP Q00955

Continued on next page...

Continued from previous page...

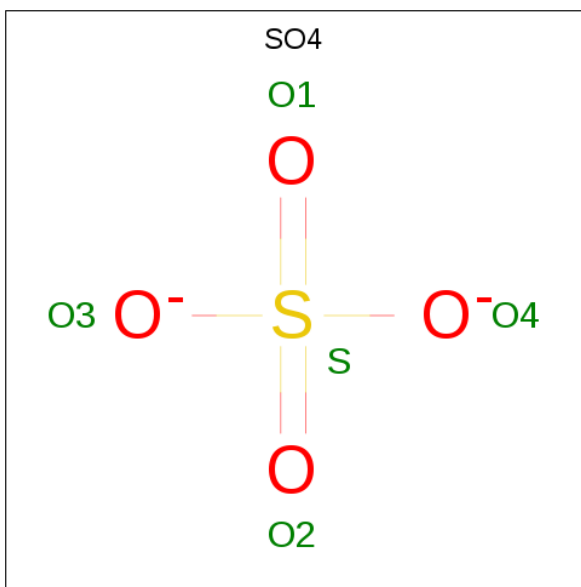
Chain	Residue	Modelled	Actual	Comment	Reference
C	1765	VAL	MET	engineered mutation	UNP Q00955
C	1919	GLN	GLU	engineered mutation	UNP Q00955
C	1920	ALA	PRO	engineered mutation	UNP Q00955
C	1925	PHE	HIS	engineered mutation	UNP Q00955
C	2028	GLU	GLN	engineered mutation	UNP Q00955
C	2030	THR	MET	engineered mutation	UNP Q00955
C	2032	GLU	GLY	engineered mutation	UNP Q00955
C	2234	LEU	-	expression tag	UNP Q00955
C	2235	GLU	-	expression tag	UNP Q00955
C	2236	HIS	-	expression tag	UNP Q00955
C	2237	HIS	-	expression tag	UNP Q00955
C	2238	HIS	-	expression tag	UNP Q00955
C	2239	HIS	-	expression tag	UNP Q00955
C	2240	HIS	-	expression tag	UNP Q00955
C	2241	HIS	-	expression tag	UNP Q00955

- Molecule 2 is 2,2-dimethylpropyl (1S)-1-methyl-8-[(7-methyl-1H-indazol-5-yl)carbonyl]-2,8-diazaspiro[4.5]decane-2-carboxylate (three-letter code: 57L) (formula: C₂₄H₃₄N₄O₃).



Mol	Chain	Residues	Atoms				ZeroOcc	AltConf	
			Total	C	H	N			O
2	B	1	65	24	34	4	3	0	0
2	C	1	65	24	34	4	3	0	0

- Molecule 3 is SULFATE ION (three-letter code: SO4) (formula: O₄S).



Mol	Chain	Residues	Atoms			ZeroOcc	AltConf
3	C	1	Total	O	S	0	0
			5	4	1		

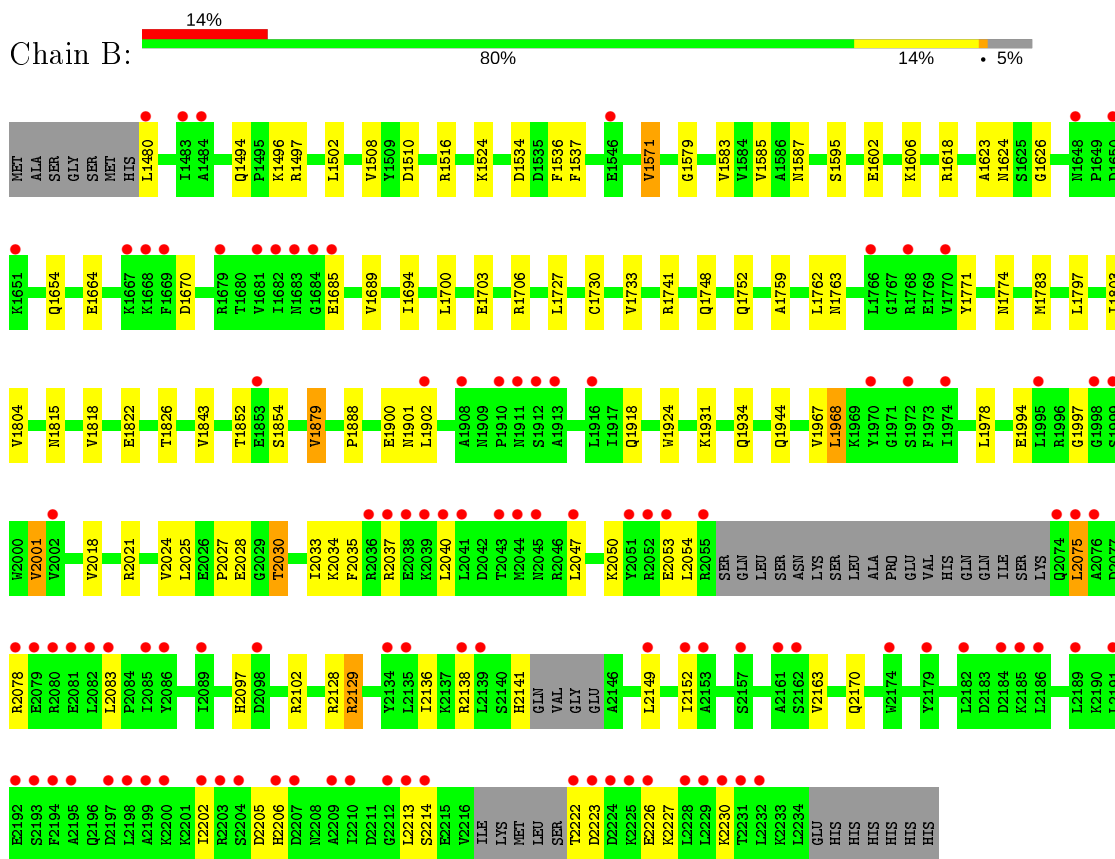
- Molecule 4 is water.

Mol	Chain	Residues	Atoms		ZeroOcc	AltConf
4	B	462	Total	O	0	0
			462	462		
4	C	475	Total	O	0	0
			475	475		

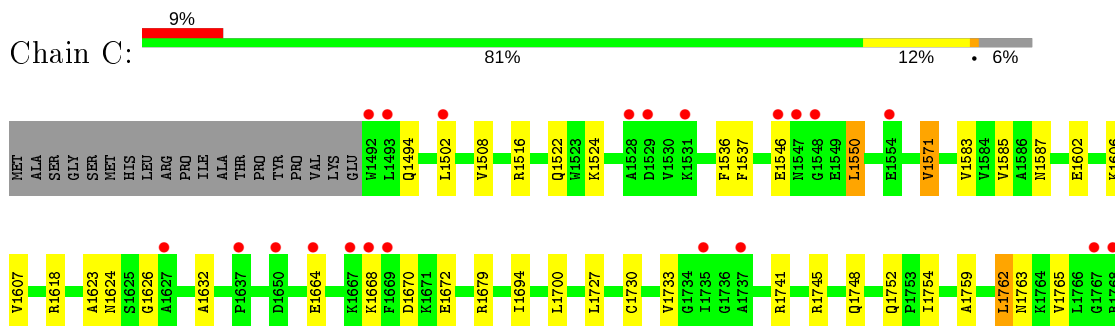
3 Residue-property plots [i](#)

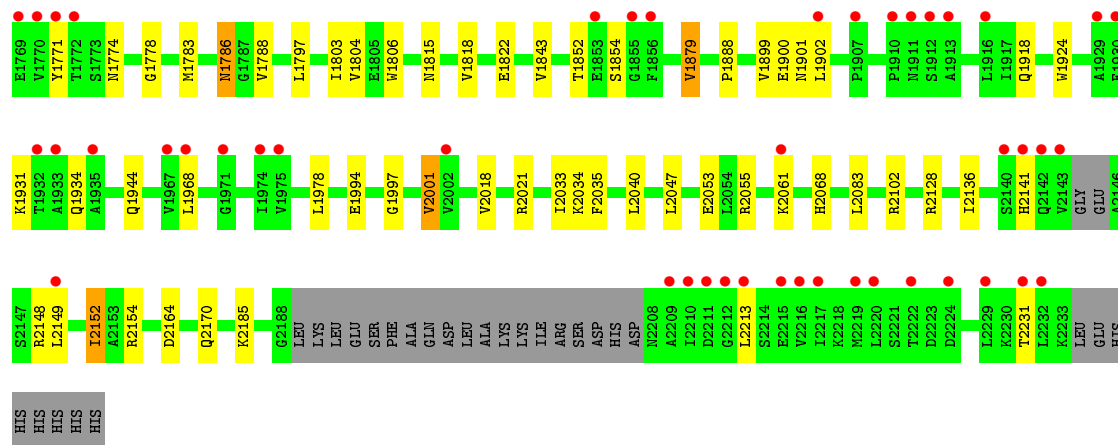
These plots are drawn for all protein, RNA and DNA chains in the entry. The first graphic for a chain summarises the proportions of the various outlier classes displayed in the second graphic. The second graphic shows the sequence view annotated by issues in geometry and electron density. Residues are color-coded according to the number of geometric quality criteria for which they contain at least one outlier: green = 0, yellow = 1, orange = 2 and red = 3 or more. A red dot above a residue indicates a poor fit to the electron density ($RSRZ > 2$). Stretches of 2 or more consecutive residues without any outlier are shown as a green connector. Residues present in the sample, but not in the model, are shown in grey.

- Molecule 1: Acetyl-CoA carboxylase



- Molecule 1: Acetyl-CoA carboxylase





4 Data and refinement statistics

Property	Value	Source
Space group	P 21 21 21	Depositor
Cell constants a, b, c, α , β , γ	94.34Å 138.12Å 185.55Å 90.00° 90.00° 90.00°	Depositor
Resolution (Å)	42.05 – 2.34 42.05 – 2.34	Depositor EDS
% Data completeness (in resolution range)	92.4 (42.05-2.34) 92.5 (42.05-2.34)	Depositor EDS
R_{merge}	0.09	Depositor
R_{sym}	(Not available)	Depositor
$\langle I/\sigma(I) \rangle$ ¹	2.29 (at 2.34Å)	Xtriage
Refinement program	BUSTER-TNT BUSTER 2.11.6	Depositor
R, R_{free}	0.185 , 0.217 0.186 , 0.221	Depositor DCC
R_{free} test set	4686 reflections (4.94%)	wwPDB-VP
Wilson B-factor (Å ²)	41.0	Xtriage
Anisotropy	0.753	Xtriage
Bulk solvent k_{sol} (e/Å ³), B_{sol} (Å ²)	0.34 , 59.8	EDS
L-test for twinning ²	$\langle L \rangle = 0.49$, $\langle L^2 \rangle = 0.33$	Xtriage
Estimated twinning fraction	No twinning to report.	Xtriage
F_o, F_c correlation	0.96	EDS
Total number of atoms	12599	wwPDB-VP
Average B, all atoms (Å ²)	61.0	wwPDB-VP

Xtriage's analysis on translational NCS is as follows: *The largest off-origin peak in the Patterson function is 2.27% of the height of the origin peak. No significant pseudotranslation is detected.*

¹Intensities estimated from amplitudes.

²Theoretical values of $\langle |L| \rangle$, $\langle L^2 \rangle$ for acentric reflections are 0.5, 0.333 respectively for untwinned datasets, and 0.375, 0.2 for perfectly twinned datasets.

5 Model quality

5.1 Standard geometry

Bond lengths and bond angles in the following residue types are not validated in this section: SO4, 57L

The Z score for a bond length (or angle) is the number of standard deviations the observed value is removed from the expected value. A bond length (or angle) with $|Z| > 5$ is considered an outlier worth inspection. RMSZ is the root-mean-square of all Z scores of the bond lengths (or angles).

Mol	Chain	Bond lengths		Bond angles	
		RMSZ	# Z >5	RMSZ	# Z >5
1	B	0.50	0/5919	0.69	0/8013
1	C	0.51	0/5848	0.70	0/7916
All	All	0.51	0/11767	0.70	0/15929

There are no bond length outliers.

There are no bond angle outliers.

There are no chirality outliers.

There are no planarity outliers.

5.2 Too-close contacts

In the following table, the Non-H and H(model) columns list the number of non-hydrogen atoms and hydrogen atoms in the chain respectively. The H(added) column lists the number of hydrogen atoms added and optimized by MolProbity. The Clashes column lists the number of clashes within the asymmetric unit, whereas Symm-Clashes lists symmetry related clashes.

Mol	Chain	Non-H	H(model)	H(added)	Clashes	Symm-Clashes
1	B	5796	0	5716	45	0
1	C	5731	0	5653	36	0
2	B	31	34	34	0	0
2	C	31	34	34	0	0
3	C	5	0	0	0	0
4	B	462	0	0	7	0
4	C	475	0	0	3	0
All	All	12531	68	11437	76	0

The all-atom clashscore is defined as the number of clashes found per 1000 atoms (including hydrogen atoms). The all-atom clashscore for this structure is 3.

The worst 5 of 76 close contacts within the same asymmetric unit are listed below, sorted by their clash magnitude.

Atom-1	Atom-2	Interatomic distance (Å)	Clash overlap (Å)
1:B:1595:SER:HB3	4:B:2406:HOH:O	1.64	0.94
1:B:2129:ARG:HH11	1:B:2129:ARG:HG2	1.39	0.86
1:B:1763:ASN:HD21	1:B:1771:TYR:H	1.27	0.79
1:C:1763:ASN:HD21	1:C:1771:TYR:H	1.29	0.78
1:C:1730:CYS:HA	1:C:1752:GLN:HE21	1.48	0.77

There are no symmetry-related clashes.

5.3 Torsion angles [i](#)

5.3.1 Protein backbone [i](#)

In the following table, the Percentiles column shows the percent Ramachandran outliers of the chain as a percentile score with respect to all X-ray entries followed by that with respect to entries of similar resolution.

The Analysed column shows the number of residues for which the backbone conformation was analysed, and the total number of residues.

Mol	Chain	Analysed	Favoured	Allowed	Outliers	Percentiles
1	B	721/769 (94%)	703 (98%)	17 (2%)	1 (0%)	51 62
1	C	715/769 (93%)	696 (97%)	19 (3%)	0	100 100
All	All	1436/1538 (93%)	1399 (97%)	36 (2%)	1 (0%)	51 62

All (1) Ramachandran outliers are listed below:

Mol	Chain	Res	Type
1	B	2206	HIS

5.3.2 Protein sidechains [i](#)

In the following table, the Percentiles column shows the percent sidechain outliers of the chain as a percentile score with respect to all X-ray entries followed by that with respect to entries of similar resolution.

The Analysed column shows the number of residues for which the sidechain conformation was analysed, and the total number of residues.

Mol	Chain	Analysed	Rotameric	Outliers	Percentiles	
1	B	612/658 (93%)	558 (91%)	54 (9%)	10	9
1	C	609/658 (93%)	558 (92%)	51 (8%)	11	10
All	All	1221/1316 (93%)	1116 (91%)	105 (9%)	10	10

5 of 105 residues with a non-rotameric sidechain are listed below:

Mol	Chain	Res	Type
1	B	2138	ARG
1	C	1522	GLN
1	C	2128	ARG
1	B	2141	HIS
1	B	2226	GLU

Some sidechains can be flipped to improve hydrogen bonding and reduce clashes. 5 of 36 such sidechains are listed below:

Mol	Chain	Res	Type
1	B	2092	GLN
1	C	1587	ASN
1	C	2070	GLN
1	B	2170	GLN
1	C	1605	ASN

5.3.3 RNA [i](#)

There are no RNA molecules in this entry.

5.4 Non-standard residues in protein, DNA, RNA chains [i](#)

There are no non-standard protein/DNA/RNA residues in this entry.

5.5 Carbohydrates [i](#)

There are no carbohydrates in this entry.

5.6 Ligand geometry [i](#)

3 ligands are modelled in this entry.

In the following table, the Counts columns list the number of bonds (or angles) for which Mogul statistics could be retrieved, the number of bonds (or angles) that are observed in the model and the number of bonds (or angles) that are defined in the Chemical Component Dictionary. The Link column lists molecule types, if any, to which the group is linked. The Z score for a bond length (or angle) is the number of standard deviations the observed value is removed from the expected value. A bond length (or angle) with $|Z| > 2$ is considered an outlier worth inspection. RMSZ is the root-mean-square of all Z scores of the bond lengths (or angles).

Mol	Type	Chain	Res	Link	Bond lengths			Bond angles		
					Counts	RMSZ	# Z > 2	Counts	RMSZ	# Z > 2
3	SO4	C	2302	-	4,4,4	0.21	0	6,6,6	0.28	0
2	57L	B	2301	-	34,34,34	0.96	2 (5%)	34,52,52	1.03	2 (5%)
2	57L	C	2301	-	34,34,34	0.93	1 (2%)	34,52,52	1.03	3 (8%)

In the following table, the Chirals column lists the number of chiral outliers, the number of chiral centers analysed, the number of these observed in the model and the number defined in the Chemical Component Dictionary. Similar counts are reported in the Torsion and Rings columns. '-' means no outliers of that kind were identified.

Mol	Type	Chain	Res	Link	Chirals	Torsions	Rings
2	57L	B	2301	-	-	0/18/46/46	0/4/4/4
2	57L	C	2301	-	-	0/18/46/46	0/4/4/4

All (3) bond length outliers are listed below:

Mol	Chain	Res	Type	Atoms	Z	Observed(Å)	Ideal(Å)
2	B	2301	57L	C9-N3	2.37	1.40	1.34
2	C	2301	57L	C9-N3	2.18	1.39	1.34
2	B	2301	57L	C19-N4	2.10	1.38	1.35

All (5) bond angle outliers are listed below:

Mol	Chain	Res	Type	Atoms	Z	Observed(°)	Ideal(°)
2	C	2301	57L	C4-C5-C6	-2.54	117.32	121.24
2	B	2301	57L	C4-C5-C6	-2.50	117.38	121.24
2	B	2301	57L	C5-C4-C3	2.32	122.69	119.83
2	C	2301	57L	C5-C4-C3	2.28	122.63	119.83
2	C	2301	57L	O3-C19-N4	2.10	113.36	111.05

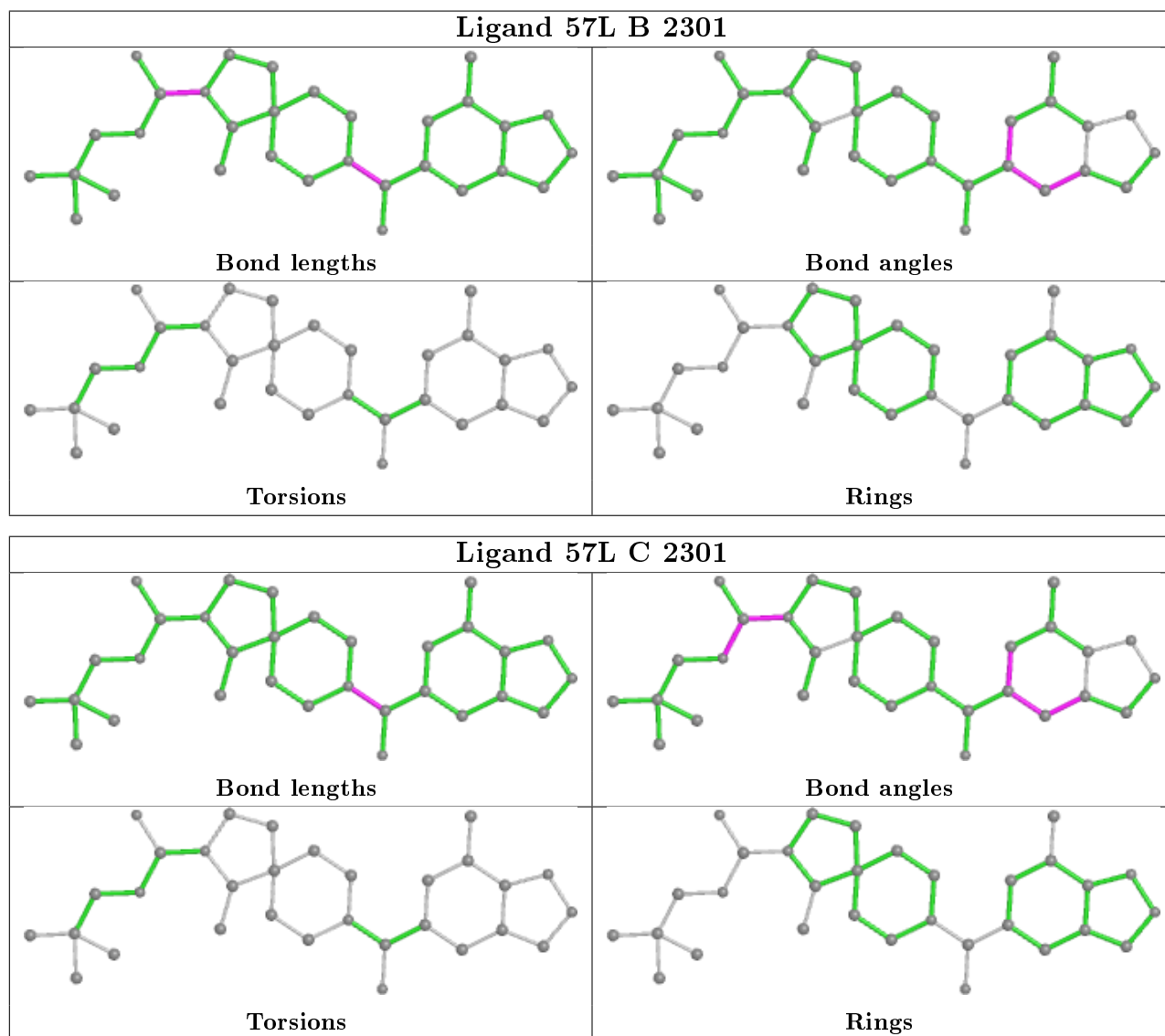
There are no chirality outliers.

There are no torsion outliers.

There are no ring outliers.

No monomer is involved in short contacts.

The following is a two-dimensional graphical depiction of Mogul quality analysis of bond lengths, bond angles, torsion angles, and ring geometry for all instances of the Ligand of Interest. In addition, ligands with molecular weight > 250 and outliers as shown on the validation Tables will also be included. For torsion angles, if less than 5% of the Mogul distribution of torsion angles is within 10 degrees of the torsion angle in question, then that torsion angle is considered an outlier. Any bond that is central to one or more torsion angles identified as an outlier by Mogul will be highlighted in the graph. For rings, the root-mean-square deviation (RMSD) between the ring in question and similar rings identified by Mogul is calculated over all ring torsion angles. If the average RMSD is greater than 60 degrees and the minimal RMSD between the ring in question and any Mogul-identified rings is also greater than 60 degrees, then that ring is considered an outlier. The outliers are highlighted in purple. The color gray indicates Mogul did not find sufficient equivalents in the CSD to analyse the geometry.



5.7 Other polymers [i](#)

There are no such residues in this entry.

5.8 Polymer linkage issues

There are no chain breaks in this entry.

6 Fit of model and data [i](#)

6.1 Protein, DNA and RNA chains [i](#)

In the following table, the column labelled '#RSRZ > 2' contains the number (and percentage) of RSRZ outliers, followed by percent RSRZ outliers for the chain as percentile scores relative to all X-ray entries and entries of similar resolution. The OWAB column contains the minimum, median, 95th percentile and maximum values of the occupancy-weighted average B-factor per residue. The column labelled 'Q < 0.9' lists the number of (and percentage) of residues with an average occupancy less than 0.9.

Mol	Chain	Analysed	<RSRZ>	#RSRZ > 2	OWAB(Å ²)	Q < 0.9
1	B	728/769 (94%)	0.69	107 (14%) 2 4	32, 53, 125, 152	0
1	C	721/769 (93%)	0.36	67 (9%) 8 14	30, 55, 97, 126	0
All	All	1449/1538 (94%)	0.53	174 (12%) 4 7	30, 54, 110, 152	0

The worst 5 of 174 RSRZ outliers are listed below:

Mol	Chain	Res	Type	RSRZ
1	B	2202	ILE	10.2
1	B	2076	ALA	8.6
1	B	2213	LEU	8.5
1	B	2075	LEU	7.9
1	B	2189	LEU	7.9

6.2 Non-standard residues in protein, DNA, RNA chains [i](#)

There are no non-standard protein/DNA/RNA residues in this entry.

6.3 Carbohydrates [i](#)

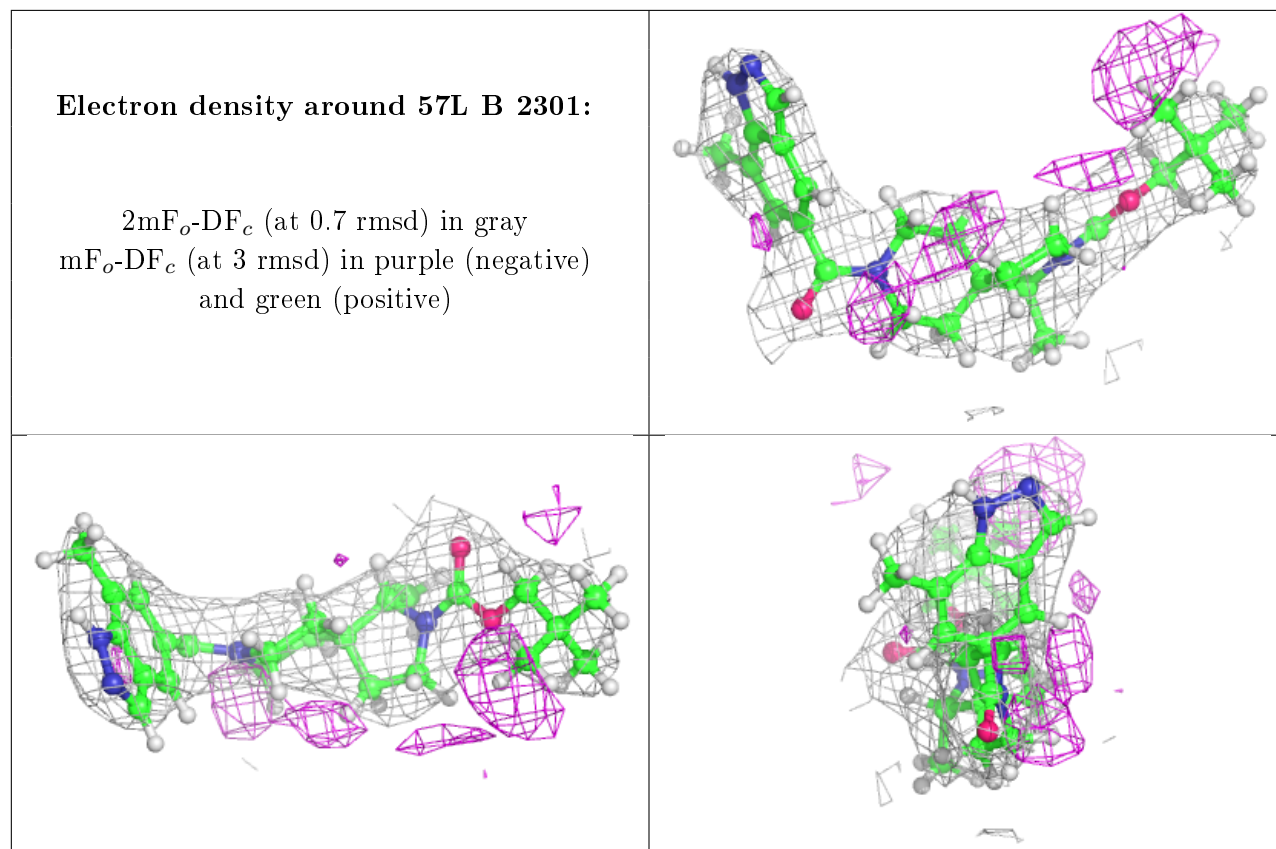
There are no carbohydrates in this entry.

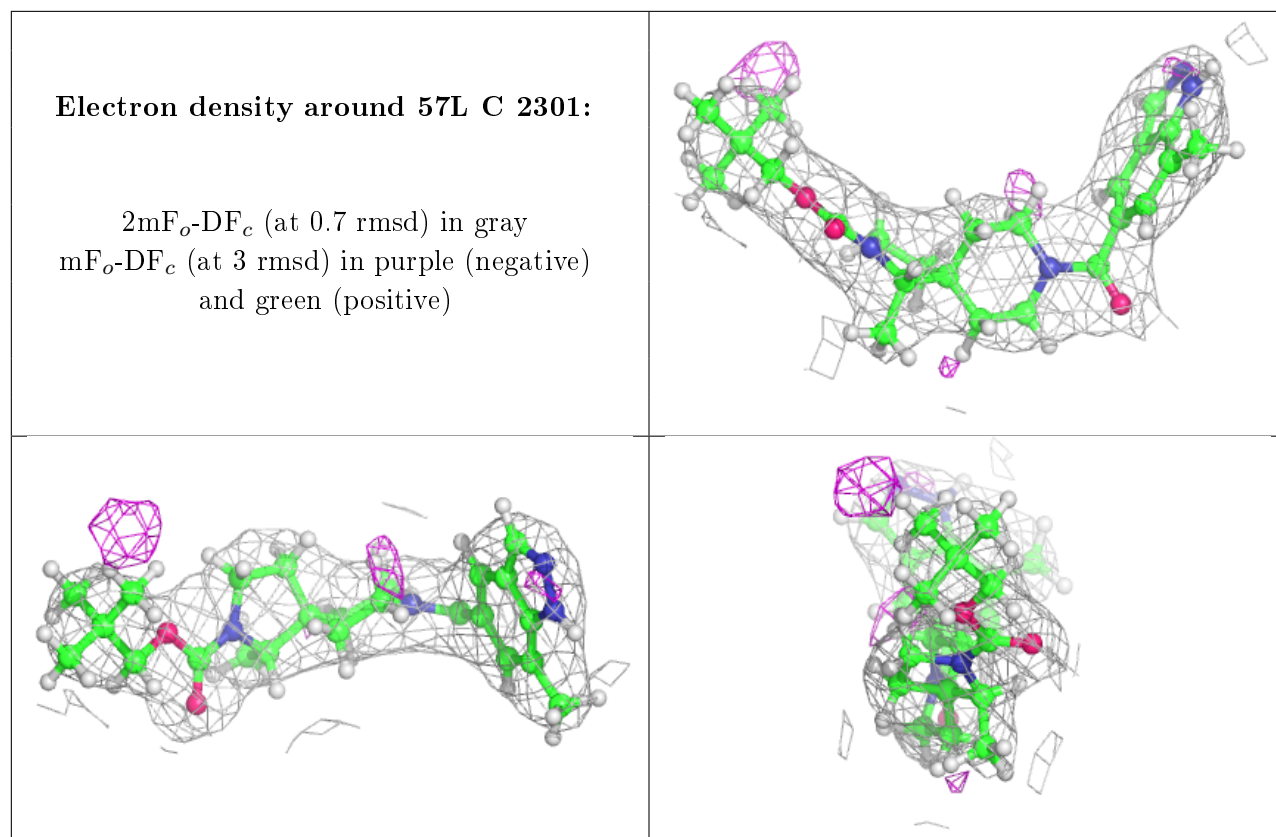
6.4 Ligands [i](#)

In the following table, the Atoms column lists the number of modelled atoms in the group and the number defined in the chemical component dictionary. The B-factors column lists the minimum, median, 95th percentile and maximum values of B factors of atoms in the group. The column labelled 'Q < 0.9' lists the number of atoms with occupancy less than 0.9.

Mol	Type	Chain	Res	Atoms	RSCC	RSR	B-factors(\AA^2)	Q<0.9
2	57L	B	2301	31/31	0.94	0.15	46,57,76,79	0
2	57L	C	2301	31/31	0.95	0.14	39,48,54,60	0
3	SO4	C	2302	5/5	0.98	0.14	83,85,86,87	0

The following is a graphical depiction of the model fit to experimental electron density of all instances of the Ligand of Interest. In addition, ligands with molecular weight > 250 and outliers as shown on the geometry validation Tables will also be included. Each fit is shown from different orientation to approximate a three-dimensional view.





6.5 Other polymers [i](#)

There are no such residues in this entry.