



# Full wwPDB X-ray Structure Validation Report ⓘ

Nov 6, 2023 – 05:25 pm GMT

PDB ID : 4CHX  
Title : Crystal structure of MltC in complex with disaccharide pentapeptide DH189  
Authors : Artola-Recolons, C.; Bernardo-Garcia, N.; Hermoso, J.A.  
Deposited on : 2013-12-04  
Resolution : 2.45 Å(reported)

This is a Full wwPDB X-ray Structure Validation Report for a publicly released PDB entry.

We welcome your comments at [validation@mail.wwpdb.org](mailto:validation@mail.wwpdb.org)

A user guide is available at

<https://www.wwpdb.org/validation/2017/XrayValidationReportHelp>

with specific help available everywhere you see the ⓘ symbol.

The types of validation reports are described at

<http://www.wwpdb.org/validation/2017/FAQs#types>.

---

The following versions of software and data (see [references ⓘ](#)) were used in the production of this report:

MolProbity : 4.02b-467  
Mogul : 1.8.4, CSD as541be (2020)  
Xtriage (Phenix) : 1.13  
EDS : 2.36  
buster-report : 1.1.7 (2018)  
Percentile statistics : 20191225.v01 (using entries in the PDB archive December 25th 2019)  
Refmac : 5.8.0158  
CCP4 : 7.0.044 (Gargrove)  
Ideal geometry (proteins) : Engh & Huber (2001)  
Ideal geometry (DNA, RNA) : Parkinson et al. (1996)  
Validation Pipeline (wwPDB-VP) : 2.36

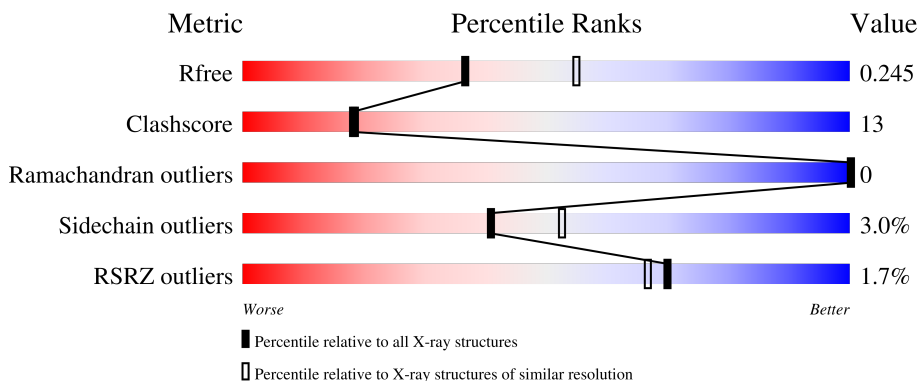
# 1 Overall quality at a glance

The following experimental techniques were used to determine the structure:

*X-RAY DIFFRACTION*

The reported resolution of this entry is 2.45 Å.

Percentile scores (ranging between 0-100) for global validation metrics of the entry are shown in the following graphic. The table shows the number of entries on which the scores are based.



Metric	Whole archive (#Entries)	Similar resolution (#Entries, resolution range(Å))
$R_{free}$	130704	1544 (2.48-2.44)
Clashscore	141614	1613 (2.48-2.44)
Ramachandran outliers	138981	1598 (2.48-2.44)
Sidechain outliers	138945	1598 (2.48-2.44)
RSRZ outliers	127900	1523 (2.48-2.44)

The table below summarises the geometric issues observed across the polymeric chains and their fit to the electron density. The red, orange, yellow and green segments of the lower bar indicate the fraction of residues that contain outliers for  $\geq 3$ , 2, 1 and 0 types of geometric quality criteria respectively. A grey segment represents the fraction of residues that are not modelled. The numeric value for each fraction is indicated below the corresponding segment, with a dot representing fractions  $\leq 5\%$ . The upper red bar (where present) indicates the fraction of residues that have poor fit to the electron density. The numeric value is given above the bar.

Mol	Chain	Length	Quality of chain
1	A	341	
1	B	341	
2	C	5	

The following table lists non-polymeric compounds, carbohydrate monomers and non-standard residues in protein, DNA, RNA chains that are outliers for geometric or electron-density-fit criteria:

Mol	Type	Chain	Res	Chirality	Geometry	Clashes	Electron density
2	DGL	C	4	-	-	-	X

## 2 Entry composition

There are 5 unique types of molecules in this entry. The entry contains 5324 atoms, of which 0 are hydrogens and 0 are deuteriums.

In the tables below, the ZeroOcc column contains the number of atoms modelled with zero occupancy, the AltConf column contains the number of residues with at least one atom in alternate conformation and the Trace column contains the number of residues modelled with at most 2 atoms.

- Molecule 1 is a protein called Membrane-bound lytic murein transglycosylase C.

Mol	Chain	Residues	Atoms					ZeroOcc	AltConf	Trace
			Total	C	N	O	S			
1	A	327	Total	C	N	O	S	0	0	0
			2577	1616	461	492	8			
1	B	327	Total	C	N	O	S	0	0	0
			2577	1616	461	492	8			

There are 4 discrepancies between the modelled and reference sequences:

Chain	Residue	Modelled	Actual	Comment	Reference
A	19	MET	-	initiating methionine	UNP P0C066
A	217	GLN	GLU	conflict	UNP P0C066
B	19	MET	-	initiating methionine	UNP P0C066
B	217	GLN	GLU	conflict	UNP P0C066

- Molecule 2 is a protein called NAG-ANHMUR-PENTAPEPTIDE.

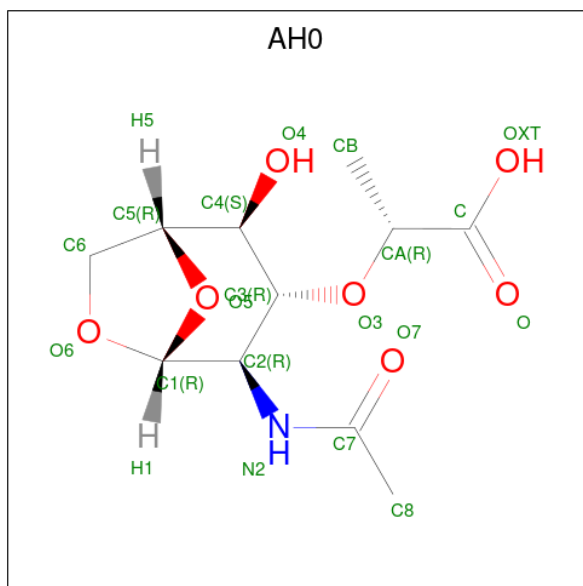
Mol	Chain	Residues	Atoms				ZeroOcc	AltConf	Trace
			Total	C	N	O			
2	C	5	Total	C	N	O	0	0	0
			36	21	6	9			

- Molecule 3 is 2-acetamido-2-deoxy-beta-D-glucopyranose (three-letter code: NAG) (formula: C<sub>8</sub>H<sub>15</sub>NO<sub>6</sub>).



Mol	Chain	Residues	Atoms				ZeroOcc	AltConf
			Total	C	N	O		
3	A	1	14	8	1	5	14	0

- Molecule 4 is 2-(2-ACETYLAMINO-4-HYDROXY-6,8-DIOXA-BICYCLO[3.2.1]OCT-3-YL OXY)-PROPIONIC ACID (three-letter code: AH0) (formula:  $C_{11}H_{17}NO_7$ ).



Mol	Chain	Residues	Atoms				ZeroOcc	AltConf
			Total	C	N	O		
4	C	1	18	11	1	6	14	0

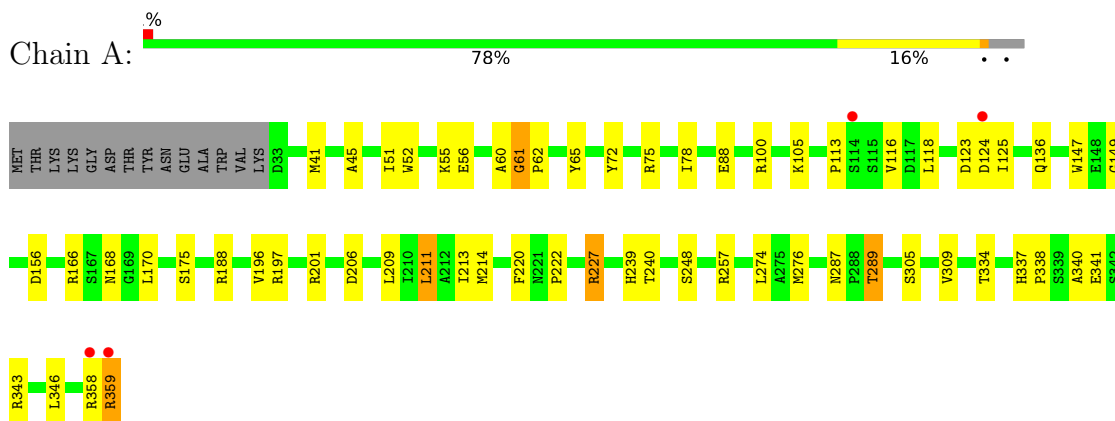
- Molecule 5 is water.

Mol	Chain	Residues	Atoms		ZeroOcc	AltConf
5	A	54	Total 54	O 54	0	0
5	B	48	Total 48	O 48	0	0

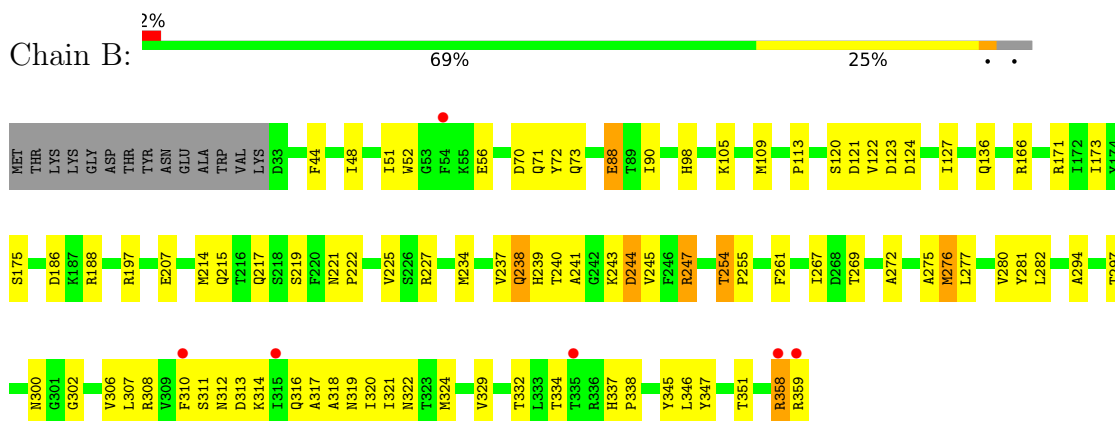
### 3 Residue-property plots [i](#)

These plots are drawn for all protein, RNA, DNA and oligosaccharide chains in the entry. The first graphic for a chain summarises the proportions of the various outlier classes displayed in the second graphic. The second graphic shows the sequence view annotated by issues in geometry and electron density. Residues are color-coded according to the number of geometric quality criteria for which they contain at least one outlier: green = 0, yellow = 1, orange = 2 and red = 3 or more. A red dot above a residue indicates a poor fit to the electron density ( $RSRZ > 2$ ). Stretches of 2 or more consecutive residues without any outlier are shown as a green connector. Residues present in the sample, but not in the model, are shown in grey.

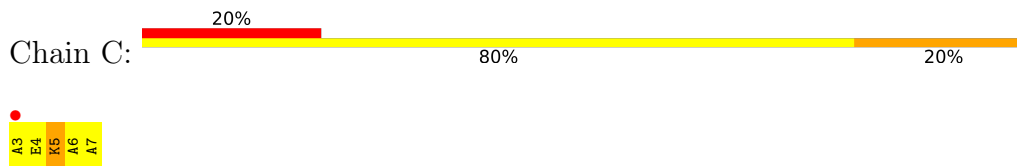
- Molecule 1: Membrane-bound lytic murein transglycosylase C



- Molecule 1: Membrane-bound lytic murein transglycosylase C



- Molecule 2: NAG-ANHMUR-PENTAPEPTIDE



## 4 Data and refinement statistics

Property	Value	Source
Space group	P 1 21 1	Depositor
Cell constants a, b, c, $\alpha$ , $\beta$ , $\gamma$	50.16Å 115.00Å 61.28Å 90.00° 93.21° 90.00°	Depositor
Resolution (Å)	45.92 – 2.45 45.92 – 2.45	Depositor EDS
% Data completeness (in resolution range)	100.0 (45.92-2.45) 100.0 (45.92-2.45)	Depositor EDS
$R_{merge}$	0.18	Depositor
$R_{sym}$	(Not available)	Depositor
$\langle I/\sigma(I) \rangle$ <sup>1</sup>	1.49 (at 2.45Å)	Xtrriage
Refinement program	PHENIX	Depositor
R, $R_{free}$	0.192 , 0.248 0.194 , 0.245	Depositor DCC
$R_{free}$ test set	2008 reflections (7.87%)	wwPDB-VP
Wilson B-factor (Å <sup>2</sup> )	30.6	Xtrriage
Anisotropy	0.057	Xtrriage
Bulk solvent $k_{sol}$ (e/Å <sup>3</sup> ), $B_{sol}$ (Å <sup>2</sup> )	0.35 , 61.1	EDS
L-test for twinning <sup>2</sup>	$\langle  L  \rangle = 0.49$ , $\langle L^2 \rangle = 0.32$	Xtrriage
Estimated twinning fraction	No twinning to report.	Xtrriage
$F_o, F_c$ correlation	0.94	EDS
Total number of atoms	5324	wwPDB-VP
Average B, all atoms (Å <sup>2</sup> )	43.0	wwPDB-VP

Xtrriage's analysis on translational NCS is as follows: *The largest off-origin peak in the Patterson function is 5.51% of the height of the origin peak. No significant pseudotranslation is detected.*

<sup>1</sup>Intensities estimated from amplitudes.

<sup>2</sup>Theoretical values of  $\langle |L| \rangle$ ,  $\langle L^2 \rangle$  for acentric reflections are 0.5, 0.333 respectively for untwinned datasets, and 0.375, 0.2 for perfectly twinned datasets.



## 5 Model quality [i](#)

### 5.1 Standard geometry [i](#)

Bond lengths and bond angles in the following residue types are not validated in this section: DAL, API, NAG, DGL, AH0

The Z score for a bond length (or angle) is the number of standard deviations the observed value is removed from the expected value. A bond length (or angle) with  $|Z| > 5$  is considered an outlier worth inspection. RMSZ is the root-mean-square of all Z scores of the bond lengths (or angles).

Mol	Chain	Bond lengths		Bond angles	
		RMSZ	# $ Z  > 5$	RMSZ	# $ Z  > 5$
1	A	0.71	1/2628 (0.0%)	0.70	2/3559 (0.1%)
1	B	0.82	3/2628 (0.1%)	0.68	1/3559 (0.0%)
2	C	3.14	0/4	5.01	2/4 (50.0%)
All	All	0.77	4/5260 (0.1%)	0.70	5/7122 (0.1%)

All (4) bond length outliers are listed below:

Mol	Chain	Res	Type	Atoms	Z	Observed(Å)	Ideal(Å)
1	B	219	SER	CB-OG	-5.88	1.34	1.42
1	B	88	GLU	CD-OE1	-5.75	1.19	1.25
1	B	255	PRO	N-CD	5.15	1.55	1.47
1	A	52	TRP	NE1-CE2	-5.02	1.31	1.37

All (5) bond angle outliers are listed below:

Mol	Chain	Res	Type	Atoms	Z	Observed(°)	Ideal(°)
2	C	3	ALA	CA-C-O	-6.70	106.03	120.10
2	C	3	ALA	N-CA-C	-6.30	93.99	111.00
1	A	61	GLY	C-N-CD	5.66	140.28	128.40
1	B	254	THR	C-N-CD	5.30	139.52	128.40
1	A	75	ARG	NE-CZ-NH2	-5.17	117.71	120.30

There are no chirality outliers.

There are no planarity outliers.

### 5.2 Too-close contacts [i](#)

In the following table, the Non-H and H(model) columns list the number of non-hydrogen atoms and hydrogen atoms in the chain respectively. The H(added) column lists the number of hydrogen

atoms added and optimized by MolProbity. The Clashes column lists the number of clashes within the asymmetric unit, whereas Symm-Clashes lists symmetry-related clashes.

Mol	Chain	Non-H	H(model)	H(added)	Clashes	Symm-Clashes
1	A	2577	0	2547	48	0
1	B	2577	0	2547	87	0
2	C	36	0	25	9	0
3	A	14	0	13	0	0
4	C	18	0	15	3	0
5	A	54	0	0	4	0
5	B	48	0	0	4	0
All	All	5324	0	5147	138	0

The all-atom clashscore is defined as the number of clashes found per 1000 atoms (including hydrogen atoms). The all-atom clashscore for this structure is 13.

All (138) close contacts within the same asymmetric unit are listed below, sorted by their clash magnitude.

Atom-1	Atom-2	Interatomic distance (Å)	Clash overlap (Å)
1:B:51:ILE:HG22	1:B:90:ILE:HD11	1.21	1.11
1:B:90:ILE:HG22	1:B:173:ILE:HG12	1.36	1.06
1:B:90:ILE:CG2	1:B:173:ILE:HG12	1.90	1.00
1:B:239:HIS:CE1	1:B:240:THR:HG23	1.96	1.00
1:B:316:GLN:HG3	1:B:319:ASN:H	1.25	0.99
1:B:316:GLN:HG2	1:B:319:ASN:CB	1.96	0.95
1:B:316:GLN:HG2	1:B:319:ASN:HB2	1.48	0.95
1:B:51:ILE:CG2	1:B:90:ILE:HD11	1.98	0.93
1:A:197:ARG:HD3	5:A:519:HOH:O	1.70	0.90
1:B:70:ASP:O	1:B:73:GLN:HG3	1.74	0.86
1:B:243:LYS:HE2	1:B:254:THR:HB	1.58	0.86
1:A:358:ARG:O	1:A:359:ARG:HG2	1.75	0.85
1:B:186:ASP:HB3	5:B:438:HOH:O	1.78	0.84
1:B:297:THR:OG1	1:B:346:LEU:HD12	1.77	0.84
1:A:56:GLU:OE2	1:A:166:ARG:NH1	2.13	0.80
1:B:318:ALA:HA	1:B:321:ILE:HD12	1.63	0.79
1:B:238:GLN:HG2	5:B:402:HOH:O	1.83	0.77
1:B:239:HIS:ND1	1:B:240:THR:HG23	2.00	0.77
5:A:545:HOH:O	2:C:7:DAL:HB1	1.84	0.76
1:B:171:ARG:HG2	5:B:414:HOH:O	1.85	0.74
1:B:316:GLN:CG	1:B:319:ASN:H	2.00	0.74
1:A:45:ALA:HB2	2:C:5:API:HN62	1.51	0.74
1:B:51:ILE:HG22	1:B:90:ILE:CD1	2.11	0.73
1:A:61:GLY:HA3	2:C:4:DGL:HA	1.68	0.73

*Continued on next page...*

*Continued from previous page...*

Atom-1	Atom-2	Interatomic distance (Å)	Clash overlap (Å)
1:B:52:TRP:HB3	1:B:56:GLU:HB3	1.70	0.73
1:B:319:ASN:HA	1:B:322:ASN:HB2	1.71	0.73
1:A:227:ARG:HH11	1:A:227:ARG:HG2	1.52	0.73
1:B:358:ARG:HB3	1:B:359:ARG:HB2	1.71	0.71
1:B:90:ILE:HG22	1:B:173:ILE:CG1	2.19	0.70
5:A:514:HOH:O	4:C:101:AH0:HB3	1.93	0.69
1:B:245:VAL:HG21	1:B:269:THR:HG23	1.75	0.68
1:B:317:ALA:HA	1:B:320:ILE:HD12	1.76	0.67
1:B:358:ARG:CB	1:B:359:ARG:HB2	2.24	0.67
1:A:45:ALA:CB	2:C:5:API:HN62	2.07	0.67
1:B:314:LYS:O	1:B:316:GLN:HA	1.95	0.67
5:A:514:HOH:O	4:C:101:AH0:CB	2.43	0.66
1:B:358:ARG:HB3	1:B:359:ARG:CB	2.25	0.66
1:A:227:ARG:HG2	1:A:227:ARG:NH1	2.08	0.66
1:B:247:ARG:N	1:B:247:ARG:HD3	2.11	0.65
1:B:120:SER:OG	1:B:122:VAL:HG12	1.97	0.65
1:B:329:VAL:HA	1:B:332:THR:HG22	1.77	0.65
1:A:358:ARG:C	1:A:359:ARG:HG2	2.18	0.64
1:A:100:ARG:NH1	1:A:156:ASP:OD1	2.29	0.64
1:B:88:GLU:HG2	1:B:175:SER:HB3	1.77	0.64
1:B:241:ALA:O	1:B:245:VAL:HG13	1.97	0.64
1:A:206:ASP:OD2	1:B:359:ARG:NE	2.26	0.63
1:B:316:GLN:HG2	1:B:319:ASN:HB3	1.80	0.63
1:B:243:LYS:HD3	1:B:247:ARG:NH2	2.13	0.62
1:B:282:LEU:CD2	1:B:294:ALA:HB1	2.29	0.62
1:A:51:ILE:HD12	1:A:72:TYR:HB2	1.82	0.61
1:A:239:HIS:CD2	1:A:240:THR:HG23	2.35	0.61
1:A:105:LYS:HE3	1:A:123:ASP:OD1	2.01	0.61
1:A:287:ASN:OD1	1:A:289:THR:HG23	2.00	0.60
1:A:334:THR:HG23	1:A:346:LEU:HD23	1.82	0.60
1:A:358:ARG:O	1:A:359:ARG:CG	2.48	0.60
1:B:272:ALA:O	1:B:275:ALA:HB3	2.02	0.59
1:B:282:LEU:HD23	1:B:294:ALA:HB1	1.84	0.59
2:C:5:API:H51	2:C:6:DAL:O	2.02	0.59
1:A:45:ALA:HB2	2:C:5:API:N6	2.18	0.59
1:B:225:VAL:HG22	1:B:261:PHE:HZ	1.67	0.58
1:B:316:GLN:HG3	1:B:319:ASN:N	2.07	0.58
1:A:88:GLU:HG2	1:A:175:SER:HB3	1.85	0.57
1:A:227:ARG:HH11	1:A:227:ARG:CG	2.18	0.57
1:A:136:GLN:OE1	1:A:188:ARG:HD3	2.04	0.57
1:A:358:ARG:C	1:A:359:ARG:CG	2.70	0.57

*Continued on next page...*

*Continued from previous page...*

Atom-1	Atom-2	Interatomic distance (Å)	Clash overlap (Å)
1:B:347:TYR:O	1:B:351:THR:HG22	2.05	0.56
1:B:105:LYS:NZ	1:B:123:ASP:OD2	2.35	0.56
1:B:320:ILE:O	1:B:324:MET:HG3	2.05	0.55
1:A:100:ARG:NH2	1:A:156:ASP:OD1	2.39	0.55
1:A:197:ARG:CZ	1:A:201:ARG:HH12	2.19	0.55
1:B:136:GLN:OE1	1:B:188:ARG:HD3	2.06	0.55
1:B:334:THR:HG23	1:B:346:LEU:HD22	1.87	0.55
1:B:316:GLN:O	1:B:320:ILE:HD12	2.07	0.55
1:A:337:HIS:HB3	1:A:343:ARG:HG3	1.89	0.55
1:B:51:ILE:HD12	1:B:72:TYR:HB2	1.88	0.54
1:A:196:VAL:HG21	1:A:211:LEU:CD1	2.38	0.54
1:B:337:HIS:CG	1:B:338:PRO:HD2	2.43	0.54
1:B:302:GLY:O	1:B:306:VAL:HG23	2.09	0.53
1:B:318:ALA:O	1:B:322:ASN:N	2.35	0.53
1:A:209:LEU:O	1:A:213:ILE:HD12	2.08	0.52
1:B:318:ALA:O	1:B:322:ASN:ND2	2.43	0.52
1:B:337:HIS:CD2	1:B:338:PRO:HD2	2.45	0.52
1:B:307:LEU:HD13	1:B:314:LYS:HG2	1.92	0.51
1:B:308:ARG:HG2	1:B:312:ASN:HA	1.93	0.51
1:B:243:LYS:HD3	1:B:247:ARG:HH21	1.75	0.51
1:A:41:MET:HG3	2:C:5:API:H6	1.92	0.51
1:B:51:ILE:HD12	1:B:72:TYR:CB	2.41	0.51
1:A:197:ARG:NH1	1:A:201:ARG:HH22	2.08	0.50
1:B:197:ARG:HG3	1:B:207:GLU:OE2	2.12	0.50
1:B:234:MET:SD	1:B:267:ILE:HA	2.52	0.50
1:B:247:ARG:HH11	1:B:247:ARG:HG3	1.75	0.50
1:A:213:ILE:HD13	1:A:274:LEU:HD11	1.94	0.49
1:A:248:SER:HB3	1:A:276:MET:CE	2.42	0.49
1:B:310:PHE:HB2	1:B:317:ALA:HB1	1.95	0.49
1:A:214:MET:HG3	1:A:220:PHE:CE1	2.47	0.49
1:B:316:GLN:CG	1:B:319:ASN:N	2.72	0.48
1:A:62:PRO:HG2	4:C:101:AH0:HB3	1.95	0.48
1:A:358:ARG:O	1:A:359:ARG:CB	2.61	0.48
1:B:280:VAL:CG2	1:B:281:TYR:N	2.76	0.48
1:A:65:TYR:CE2	1:A:118:LEU:HD21	2.49	0.48
1:B:244:ASP:CG	1:B:276:MET:HE1	2.33	0.47
1:A:116:VAL:HG12	1:A:124:ASP:OD2	2.14	0.47
1:A:168:ASN:HB3	1:A:170:LEU:H	1.80	0.47
1:B:52:TRP:CB	1:B:56:GLU:HB3	2.40	0.47
1:B:71:GLN:HA	1:B:121:ASP:OD2	2.15	0.47
1:A:147:TRP:CZ3	1:A:149:GLY:HA3	2.49	0.47

*Continued on next page...*

Continued from previous page...

Atom-1	Atom-2	Interatomic distance (Å)	Clash overlap (Å)
1:B:239:HIS:CE1	1:B:240:THR:CG2	2.85	0.46
1:B:308:ARG:HA	1:B:311:SER:O	2.14	0.46
1:A:60:ALA:O	2:C:4:DGL:OE1	2.33	0.46
1:A:196:VAL:HG11	1:A:211:LEU:HD13	1.98	0.45
1:B:71:GLN:O	1:B:72:TYR:HB2	2.16	0.45
1:B:300:ASN:HB2	1:B:345:TYR:CD2	2.51	0.45
1:A:305:SER:O	1:A:309:VAL:HG23	2.17	0.45
1:A:113:PRO:HG3	1:A:222:PRO:HB2	1.99	0.44
1:B:113:PRO:HG2	1:B:222:PRO:HB2	1.99	0.44
1:B:70:ASP:OD2	1:B:98:HIS:HD2	2.00	0.44
1:B:237:VAL:HA	5:B:402:HOH:O	2.17	0.44
1:B:52:TRP:CZ3	1:B:90:ILE:HG23	2.52	0.44
1:B:88:GLU:OE2	1:B:166:ARG:NH2	2.34	0.43
1:B:44:PHE:CZ	1:B:48:ILE:HD11	2.53	0.43
1:B:127:ILE:HD12	1:B:127:ILE:N	2.34	0.43
1:B:280:VAL:HG22	1:B:281:TYR:N	2.33	0.43
1:B:313:ASP:O	1:B:316:GLN:N	2.51	0.43
1:A:239:HIS:NE2	1:A:240:THR:HG23	2.34	0.43
1:B:109:MET:HB3	1:B:109:MET:HE3	1.78	0.42
1:A:340:ALA:HA	1:A:343:ARG:NH2	2.35	0.42
1:B:52:TRP:HB3	1:B:56:GLU:CB	2.42	0.42
1:B:221:ASN:HA	1:B:222:PRO:HD2	1.92	0.42
1:B:105:LYS:HG2	1:B:127:ILE:HD11	2.01	0.42
1:A:41:MET:HG2	2:C:6:DAL:HA	2.00	0.42
1:B:316:GLN:CG	1:B:319:ASN:CB	2.85	0.41
1:B:239:HIS:ND1	1:B:239:HIS:C	2.73	0.41
1:A:125:ILE:HD13	1:A:125:ILE:N	2.35	0.41
1:A:337:HIS:CG	1:A:338:PRO:HD2	2.55	0.41
1:B:277:LEU:HD23	1:B:281:TYR:HD2	1.85	0.41
1:B:277:LEU:HD23	1:B:281:TYR:CD2	2.56	0.41
1:B:282:LEU:HD22	1:B:294:ALA:HB1	2.03	0.41
1:A:65:TYR:HB3	1:A:78:ILE:HB	2.02	0.40

There are no symmetry-related clashes.

## 5.3 Torsion angles [i](#)

### 5.3.1 Protein backbone [i](#)

In the following table, the Percentiles column shows the percent Ramachandran outliers of the chain as a percentile score with respect to all X-ray entries followed by that with respect to entries

of similar resolution.

The Analysed column shows the number of residues for which the backbone conformation was analysed, and the total number of residues.

Mol	Chain	Analysed	Favoured	Allowed	Outliers	Percentiles	
1	A	325/341 (95%)	321 (99%)	4 (1%)	0	100	100
1	B	325/341 (95%)	317 (98%)	8 (2%)	0	100	100
All	All	650/682 (95%)	638 (98%)	12 (2%)	0	100	100

There are no Ramachandran outliers to report.

### 5.3.2 Protein sidechains [i](#)

In the following table, the Percentiles column shows the percent sidechain outliers of the chain as a percentile score with respect to all X-ray entries followed by that with respect to entries of similar resolution.

The Analysed column shows the number of residues for which the sidechain conformation was analysed, and the total number of residues.

Mol	Chain	Analysed	Rotameric	Outliers	Percentiles	
1	A	279/291 (96%)	272 (98%)	7 (2%)	47	60
1	B	279/291 (96%)	269 (96%)	10 (4%)	35	46
All	All	558/582 (96%)	541 (97%)	17 (3%)	41	52

All (17) residues with a non-rotameric sidechain are listed below:

Mol	Chain	Res	Type
1	A	55	LYS
1	A	211	LEU
1	A	227	ARG
1	A	257	ARG
1	A	289	THR
1	A	341	GLU
1	A	359	ARG
1	B	124	ASP
1	B	214	MET
1	B	215	GLN
1	B	217	GLN
1	B	227	ARG
1	B	238	GLN
1	B	244	ASP

*Continued on next page...*

*Continued from previous page...*

Mol	Chain	Res	Type
1	B	247	ARG
1	B	276	MET
1	B	358	ARG

Sometimes sidechains can be flipped to improve hydrogen bonding and reduce clashes. All (1) such sidechains are listed below:

Mol	Chain	Res	Type
1	A	239	HIS

### 5.3.3 RNA [i](#)

There are no RNA molecules in this entry.

## 5.4 Non-standard residues in protein, DNA, RNA chains [i](#)

4 non-standard protein/DNA/RNA residues are modelled in this entry.

In the following table, the Counts columns list the number of bonds (or angles) for which Mogul statistics could be retrieved, the number of bonds (or angles) that are observed in the model and the number of bonds (or angles) that are defined in the Chemical Component Dictionary. The Link column lists molecule types, if any, to which the group is linked. The Z score for a bond length (or angle) is the number of standard deviations the observed value is removed from the expected value. A bond length (or angle) with  $|Z| > 2$  is considered an outlier worth inspection. RMSZ is the root-mean-square of all Z scores of the bond lengths (or angles).

Mol	Type	Chain	Res	Link	Bond lengths			Bond angles		
					Counts	RMSZ	# Z  > 2	Counts	RMSZ	# Z  > 2
2	API	C	5	2	9,11,12	2.05	2 (22%)	7,13,15	1.28	1 (14%)

In the following table, the Chirals column lists the number of chiral outliers, the number of chiral centers analysed, the number of these observed in the model and the number defined in the Chemical Component Dictionary. Similar counts are reported in the Torsion and Rings columns. '-' means no outliers of that kind were identified.

Mol	Type	Chain	Res	Link	Chirals	Torsions	Rings
2	API	C	5	2	-	7/11/12/14	-

All (2) bond length outliers are listed below:

Mol	Chain	Res	Type	Atoms	Z	Observed(Å)	Ideal(Å)
2	C	5	API	C3-CA	-3.87	1.48	1.53
2	C	5	API	C5-C6	-3.28	1.46	1.53

All (1) bond angle outliers are listed below:

Mol	Chain	Res	Type	Atoms	Z	Observed(°)	Ideal(°)
2	C	5	API	C5-C4-C3	-2.45	101.98	113.24

There are no chirality outliers.

All (7) torsion outliers are listed below:

Mol	Chain	Res	Type	Atoms
2	C	5	API	O-C-CA-C3
2	C	5	API	C4-C3-CA-N
2	C	5	API	N6-C6-C7-O3
2	C	5	API	N6-C6-C7-O4
2	C	5	API	C3-C4-C5-C6
2	C	5	API	C5-C6-C7-O3
2	C	5	API	C5-C6-C7-O4

There are no ring outliers.

1 monomer is involved in 5 short contacts:

Mol	Chain	Res	Type	Clashes	Symm-Clashes
2	C	5	API	5	0

## 5.5 Carbohydrates [i](#)

There are no monosaccharides in this entry.

## 5.6 Ligand geometry [i](#)

2 ligands are modelled in this entry.

In the following table, the Counts columns list the number of bonds (or angles) for which Mogul statistics could be retrieved, the number of bonds (or angles) that are observed in the model and the number of bonds (or angles) that are defined in the Chemical Component Dictionary. The Link column lists molecule types, if any, to which the group is linked. The Z score for a bond length (or angle) is the number of standard deviations the observed value is removed from the expected value. A bond length (or angle) with  $|Z| > 2$  is considered an outlier worth inspection. RMSZ is the root-mean-square of all Z scores of the bond lengths (or angles).



Mol	Type	Chain	Res	Link	Bond lengths			Bond angles		
					Counts	RMSZ	# Z  > 2	Counts	RMSZ	# Z  > 2
4	AH0	C	101	2,3	18,19,20	2.97	6 (33%)	22,27,29	4.29	8 (36%)
3	NAG	A	401	4	14,14,15	3.14	7 (50%)	17,19,21	3.40	6 (35%)

In the following table, the Chirals column lists the number of chiral outliers, the number of chiral centers analysed, the number of these observed in the model and the number defined in the Chemical Component Dictionary. Similar counts are reported in the Torsion and Rings columns. '-' means no outliers of that kind were identified.

Mol	Type	Chain	Res	Link	Chirals	Torsions	Rings
4	AH0	C	101	2,3	-	4/8/35/37	0/3/2/2
3	NAG	A	401	4	-	4/6/23/26	0/1/1/1

All (13) bond length outliers are listed below:

Mol	Chain	Res	Type	Atoms	Z	Observed(Å)	Ideal(Å)
3	A	401	NAG	O7-C7	8.93	1.43	1.23
4	C	101	AH0	O3-C3	-8.60	1.21	1.43
4	C	101	AH0	C2-N2	-7.48	1.33	1.45
3	A	401	NAG	O5-C1	4.25	1.50	1.43
3	A	401	NAG	C7-N2	3.55	1.46	1.34
3	A	401	NAG	O5-C5	3.15	1.49	1.43
3	A	401	NAG	C4-C3	-2.52	1.45	1.52
4	C	101	AH0	O7-C7	-2.47	1.17	1.23
3	A	401	NAG	C3-C2	-2.43	1.47	1.52
4	C	101	AH0	O3-CA	-2.19	1.41	1.45
4	C	101	AH0	O5-C5	-2.10	1.40	1.45
3	A	401	NAG	C8-C7	2.04	1.54	1.50
4	C	101	AH0	C7-N2	2.03	1.41	1.34

All (14) bond angle outliers are listed below:

Mol	Chain	Res	Type	Atoms	Z	Observed(°)	Ideal(°)
4	C	101	AH0	C3-C2-N2	13.18	132.80	110.91
4	C	101	AH0	O5-C1-C2	-9.63	103.61	109.56
4	C	101	AH0	C1-C2-N2	-9.21	95.14	111.00
3	A	401	NAG	C2-N2-C7	-7.25	112.57	122.90
3	A	401	NAG	O7-C7-N2	-6.94	109.18	121.95
3	A	401	NAG	O5-C5-C6	5.71	116.16	107.20
3	A	401	NAG	C8-C7-N2	5.55	125.49	116.10
4	C	101	AH0	C8-C7-N2	4.05	122.96	116.10
3	A	401	NAG	C4-C3-C2	-3.62	105.71	111.02

*Continued on next page...*

*Continued from previous page...*

Mol	Chain	Res	Type	Atoms	Z	Observed(°)	Ideal(°)
4	C	101	AH0	C6-C5-C4	-3.06	110.16	113.69
3	A	401	NAG	C6-C5-C4	-2.67	106.74	113.00
4	C	101	AH0	O4-C4-C3	2.34	116.15	109.94
4	C	101	AH0	C2-N2-C7	-2.15	117.96	123.18
4	C	101	AH0	O7-C7-C8	-2.11	118.14	122.06

There are no chirality outliers.

All (8) torsion outliers are listed below:

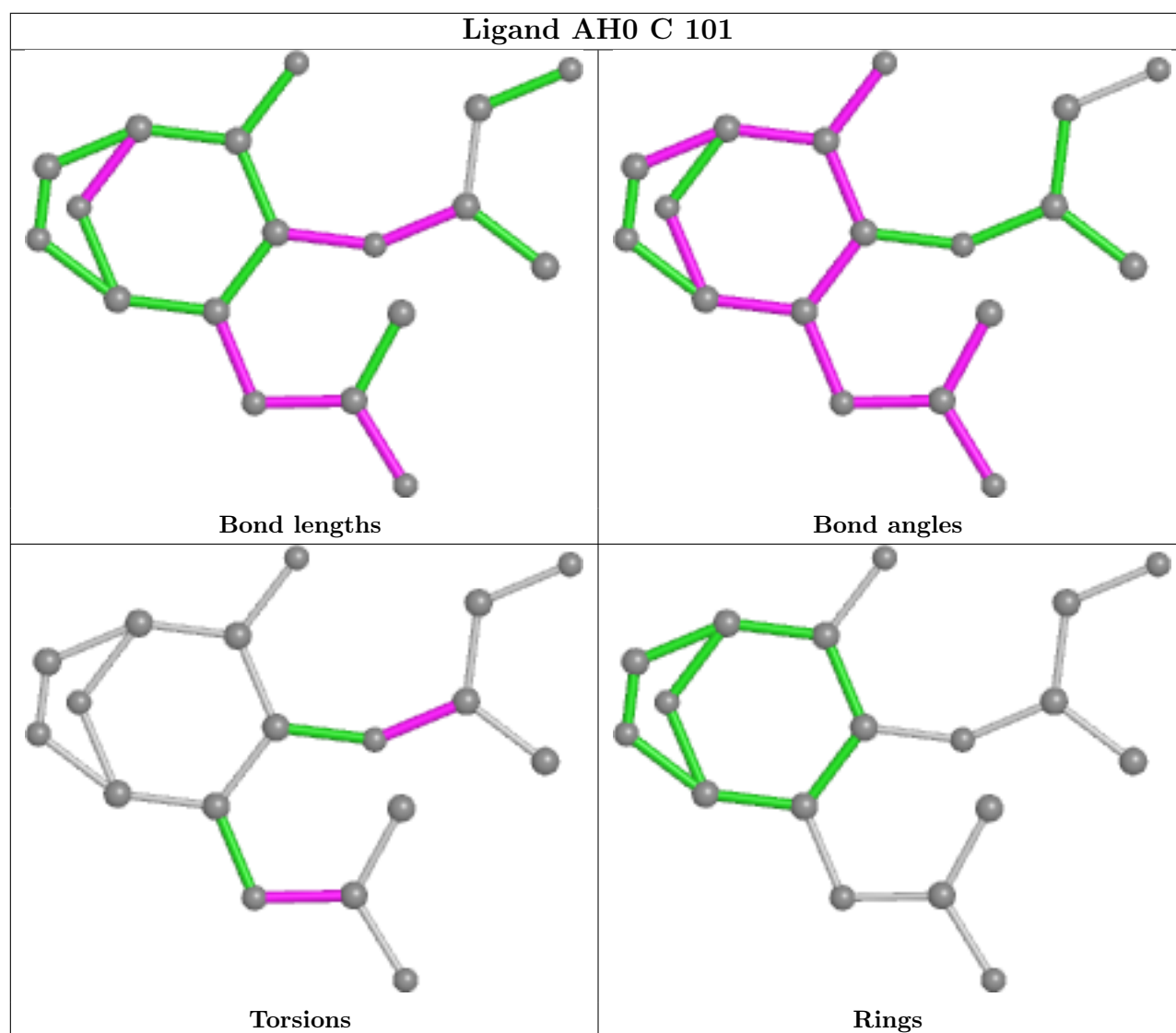
Mol	Chain	Res	Type	Atoms
3	A	401	NAG	C8-C7-N2-C2
3	A	401	NAG	O7-C7-N2-C2
4	C	101	AH0	C-CA-O3-C3
3	A	401	NAG	O5-C5-C6-O6
4	C	101	AH0	O7-C7-N2-C2
4	C	101	AH0	C8-C7-N2-C2
3	A	401	NAG	C4-C5-C6-O6
4	C	101	AH0	CB-CA-O3-C3

There are no ring outliers.

1 monomer is involved in 3 short contacts:

Mol	Chain	Res	Type	Clashes	Symm-Clashes
4	C	101	AH0	3	0

The following is a two-dimensional graphical depiction of Mogul quality analysis of bond lengths, bond angles, torsion angles, and ring geometry for all instances of the Ligand of Interest. In addition, ligands with molecular weight > 250 and outliers as shown on the validation Tables will also be included. For torsion angles, if less than 5% of the Mogul distribution of torsion angles is within 10 degrees of the torsion angle in question, then that torsion angle is considered an outlier. Any bond that is central to one or more torsion angles identified as an outlier by Mogul will be highlighted in the graph. For rings, the root-mean-square deviation (RMSD) between the ring in question and similar rings identified by Mogul is calculated over all ring torsion angles. If the average RMSD is greater than 60 degrees and the minimal RMSD between the ring in question and any Mogul-identified rings is also greater than 60 degrees, then that ring is considered an outlier. The outliers are highlighted in purple. The color gray indicates Mogul did not find sufficient equivalents in the CSD to analyse the geometry.



## 5.7 Other polymers [\(i\)](#)

There are no such residues in this entry.

## 5.8 Polymer linkage issues [\(i\)](#)

There are no chain breaks in this entry.

## 6 Fit of model and data [i](#)

### 6.1 Protein, DNA and RNA chains [i](#)

In the following table, the column labelled ‘#RSRZ> 2’ contains the number (and percentage) of RSRZ outliers, followed by percent RSRZ outliers for the chain as percentile scores relative to all X-ray entries and entries of similar resolution. The OWAB column contains the minimum, median, 95<sup>th</sup> percentile and maximum values of the occupancy-weighted average B-factor per residue. The column labelled ‘Q< 0.9’ lists the number of (and percentage) of residues with an average occupancy less than 0.9.

Mol	Chain	Analysed	<RSRZ>	#RSRZ>2	OWAB(Å <sup>2</sup> )	Q<0.9
1	A	327/341 (95%)	-0.22	4 (1%) 79 77	16, 33, 65, 119	0
1	B	327/341 (95%)	0.06	6 (1%) 68 65	19, 44, 80, 107	0
2	C	1/5 (20%)	2.60	1 (100%) 0 0	98, 98, 98, 98	0
All	All	655/687 (95%)	-0.08	11 (1%) 70 67	16, 39, 76, 119	0

All (11) RSRZ outliers are listed below:

Mol	Chain	Res	Type	RSRZ
1	A	358	ARG	4.8
1	B	358	ARG	3.4
1	A	359	ARG	3.1
1	B	54	PHE	2.8
1	A	114	SER	2.6
2	C	3	ALA	2.6
1	B	335	THR	2.5
1	A	124	ASP	2.4
1	B	359	ARG	2.3
1	B	310	PHE	2.3
1	B	315	ILE	2.3

### 6.2 Non-standard residues in protein, DNA, RNA chains [i](#)

In the following table, the Atoms column lists the number of modelled atoms in the group and the number defined in the chemical component dictionary. The B-factors column lists the minimum, median, 95<sup>th</sup> percentile and maximum values of B factors of atoms in the group. The column labelled ‘Q< 0.9’ lists the number of atoms with occupancy less than 0.9.

Mol	Type	Chain	Res	Atoms	RSCC	RSR	B-factors(Å <sup>2</sup> )	Q<0.9
2	DGL	C	4	8/10	0.45	0.61	52,108,117,123	0
2	DAL	C	6	5/6	0.63	0.18	43,52,59,80	0

*Continued on next page...*

*Continued from previous page...*

Mol	Type	Chain	Res	Atoms	RSCC	RSR	B-factors( $\text{\AA}^2$ )	Q<0.9
2	API	C	5	12/13	0.84	0.29	28,53,85,92	0
2	DAL	C	7	6/6	0.84	0.27	75,79,94,107	0

### 6.3 Carbohydrates [i](#)

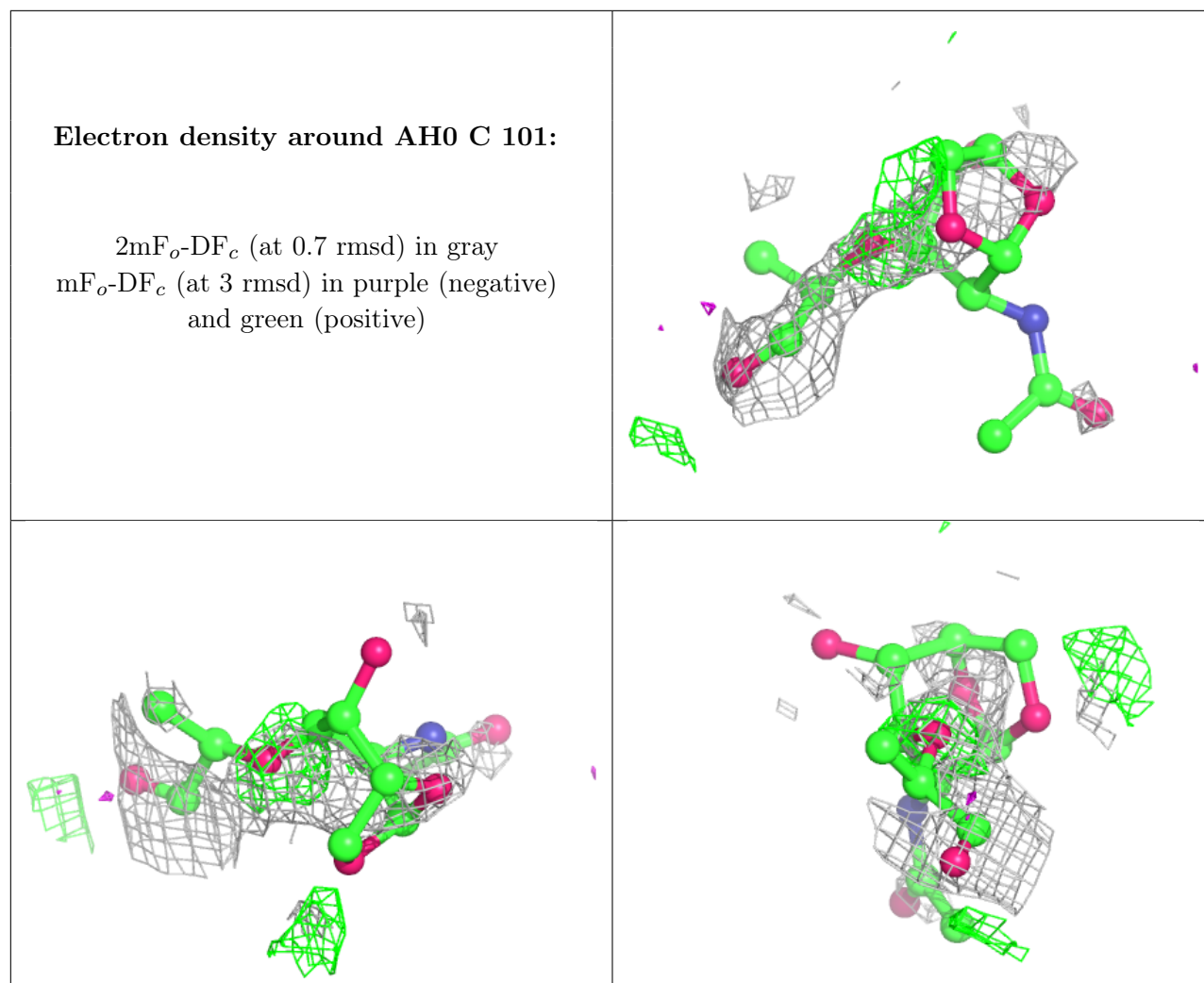
There are no monosaccharides in this entry.

### 6.4 Ligands [i](#)

In the following table, the Atoms column lists the number of modelled atoms in the group and the number defined in the chemical component dictionary. The B-factors column lists the minimum, median, 95<sup>th</sup> percentile and maximum values of B factors of atoms in the group. The column labelled 'Q< 0.9' lists the number of atoms with occupancy less than 0.9.

Mol	Type	Chain	Res	Atoms	RSCC	RSR	B-factors( $\text{\AA}^2$ )	Q<0.9
4	AH0	C	101	18/19	0.70	0.37	20,20,86,107	14
3	NAG	A	401	14/15	-	-	20,20,20,20	14

The following is a graphical depiction of the model fit to experimental electron density of all instances of the Ligand of Interest. In addition, ligands with molecular weight > 250 and outliers as shown on the geometry validation Tables will also be included. Each fit is shown from different orientation to approximate a three-dimensional view.



## 6.5 Other polymers [i](#)

There are no such residues in this entry.