



# Full wwPDB X-ray Structure Validation Report ⓘ

Dec 4, 2023 – 02:48 am GMT

PDB ID : 2C8L  
Title : Crystal Structure of (SR) Calcium-ATPase E2(Tg) form  
Authors : Jensen, A.M.; Sorensen, T.L.; Olesen, C.; Moller, J.V.; Nissen, P.  
Deposited on : 2005-12-06  
Resolution : 3.10 Å(reported)

This is a Full wwPDB X-ray Structure Validation Report for a publicly released PDB entry.

We welcome your comments at [validation@mail.wwpdb.org](mailto:validation@mail.wwpdb.org)

A user guide is available at

<https://www.wwpdb.org/validation/2017/XrayValidationReportHelp>

with specific help available everywhere you see the ⓘ symbol.

The types of validation reports are described at

<http://www.wwpdb.org/validation/2017/FAQs#types>.

---

The following versions of software and data (see [references ⓘ](#)) were used in the production of this report:

MolProbity : **FAILED**  
Mogul : 1.8.4, CSD as541be (2020)  
Xtriage (Phenix) : 1.13  
EDS : 2.36  
buster-report : 1.1.7 (2018)  
Percentile statistics : 20191225.v01 (using entries in the PDB archive December 25th 2019)  
Refmac : 5.8.0158  
CCP4 : 7.0.044 (Gargrove)  
Ideal geometry (proteins) : Engh & Huber (2001)  
Ideal geometry (DNA, RNA) : Parkinson et al. (1996)  
Validation Pipeline (wwPDB-VP) : 2.36

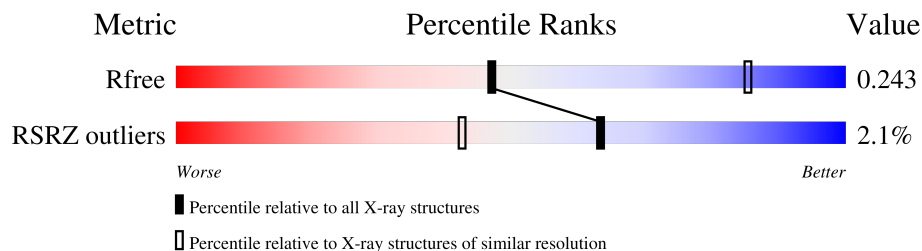
# 1 Overall quality at a glance

The following experimental techniques were used to determine the structure:

*X-RAY DIFFRACTION*

The reported resolution of this entry is 3.10 Å.

Percentile scores (ranging between 0-100) for global validation metrics of the entry are shown in the following graphic. The table shows the number of entries on which the scores are based.



Metric	Whole archive (#Entries)	Similar resolution (#Entries, resolution range(Å))
$R_{free}$	130704	1094 (3.10-3.10)
RSRZ outliers	127900	1067 (3.10-3.10)

MolProbity failed to run properly - the sequence quality summary graphics cannot be shown.

## 2 Entry composition [i](#)

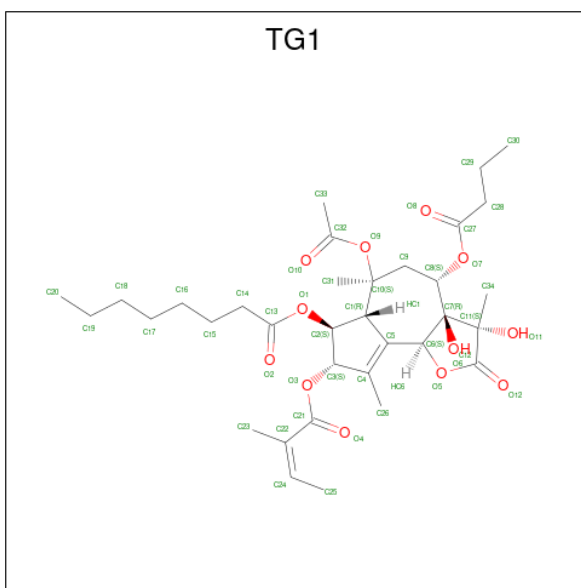
There are 3 unique types of molecules in this entry. The entry contains 7718 atoms, of which 0 are hydrogens and 0 are deuteriums.

In the tables below, the ZeroOcc column contains the number of atoms modelled with zero occupancy, the AltConf column contains the number of residues with at least one atom in alternate conformation and the Trace column contains the number of residues modelled with at most 2 atoms.

- Molecule 1 is a protein called SARCOPLASMIC/ENDOPLASMIC RETICULUM CALCIUM ATPASE 1.

Mol	Chain	Residues	Atoms					ZeroOcc	AltConf	Trace
			Total	C	N	O	S			
1	A	994	7671	4876	1287	1451	57	0	0	0

- Molecule 2 is OCTANOIC ACID [3S-[3ALPHA, 3ABETA, 4ALPHA, 6BETA, 6ABETA, 7BETA, 8ALPHA(Z), 9BALPHA]]-6-(ACETYLOXY)-2,3,-3A,4,5,6,6A,7,8,9B-DECAHYDRO-3,3A-DIHYDROXY-3,6,9-TRIMETHYL-8-[(2-METHYL-1-OXO-2-BUTENYL)OXY]-2-OXO-4-(1-OXOBUTOXY)-AZULENO[4,5-B]FURAN-7-YL ESTER (three-letter code: TG1) (formula: C<sub>34</sub>H<sub>50</sub>O<sub>12</sub>).



Mol	Chain	Residues	Atoms			ZeroOcc	AltConf
			Total	C	O		
2	A	1	46	34	12	0	0

- Molecule 3 is SODIUM ION (three-letter code: NA) (formula: Na).

Mol	Chain	Residues	Atoms		ZeroOcc	AltConf
3	A	1	Total	Na	0	0
			1	1		

MolProbity failed to run properly - this section is therefore empty.

### 3 Data and refinement statistics

Property	Value	Source
Space group	P 41 21 2	Depositor
Cell constants a, b, c, $\alpha$ , $\beta$ , $\gamma$	71.51Å 71.51Å 589.36Å 90.00° 90.00° 90.00°	Depositor
Resolution (Å)	14.99 – 3.10 49.84 – 3.10	Depositor EDS
% Data completeness (in resolution range)	99.8 (14.99-3.10) 99.9 (49.84-3.10)	Depositor EDS
$R_{merge}$	0.10	Depositor
$R_{sym}$	(Not available)	Depositor
$\langle I/\sigma(I) \rangle$ <sup>1</sup>	2.95 (at 3.12Å)	Xtrriage
Refinement program	CNS 1.1	Depositor
R, $R_{free}$	0.249 , 0.306 0.246 , 0.243	Depositor DCC
$R_{free}$ test set	1496 reflections (5.09%)	wwPDB-VP
Wilson B-factor (Å <sup>2</sup> )	76.6	Xtrriage
Anisotropy	0.247	Xtrriage
Bulk solvent $k_{sol}$ (e/Å <sup>3</sup> ), $B_{sol}$ (Å <sup>2</sup> )	0.28 , 61.5	EDS
L-test for twinning <sup>2</sup>	$\langle  L  \rangle = 0.46$ , $\langle L^2 \rangle = 0.28$	Xtrriage
Estimated twinning fraction	No twinning to report.	Xtrriage
$F_o, F_c$ correlation	0.91	EDS
Total number of atoms	7718	wwPDB-VP
Average B, all atoms (Å <sup>2</sup> )	71.0	wwPDB-VP

Xtrriage's analysis on translational NCS is as follows: *The largest off-origin peak in the Patterson function is 3.06% of the height of the origin peak. No significant pseudotranslation is detected.*

<sup>1</sup>Intensities estimated from amplitudes.

<sup>2</sup>Theoretical values of  $\langle |L| \rangle$ ,  $\langle L^2 \rangle$  for acentric reflections are 0.5, 0.333 respectively for untwinned datasets, and 0.375, 0.2 for perfectly twinned datasets.

## 4 Model quality [i](#)

### 4.1 Standard geometry [i](#)

MolProbity failed to run properly - this section is therefore empty.

### 4.2 Too-close contacts [i](#)

MolProbity failed to run properly - this section is therefore empty.

### 4.3 Torsion angles [i](#)

#### 4.3.1 Protein backbone [i](#)

MolProbity failed to run properly - this section is therefore empty.

#### 4.3.2 Protein sidechains [i](#)

MolProbity failed to run properly - this section is therefore empty.

#### 4.3.3 RNA [i](#)

MolProbity failed to run properly - this section is therefore empty.

### 4.4 Non-standard residues in protein, DNA, RNA chains [i](#)

There are no non-standard protein/DNA/RNA residues in this entry.

### 4.5 Carbohydrates [i](#)

There are no monosaccharides in this entry.

### 4.6 Ligand geometry [i](#)

Of 2 ligands modelled in this entry, 1 is monoatomic - leaving 1 for Mogul analysis.

In the following table, the Counts columns list the number of bonds (or angles) for which Mogul statistics could be retrieved, the number of bonds (or angles) that are observed in the model and the number of bonds (or angles) that are defined in the Chemical Component Dictionary. The Link column lists molecule types, if any, to which the group is linked. The Z score for a bond

length (or angle) is the number of standard deviations the observed value is removed from the expected value. A bond length (or angle) with  $|Z| > 2$  is considered an outlier worth inspection. RMSZ is the root-mean-square of all Z scores of the bond lengths (or angles).

Mol	Type	Chain	Res	Link	Bond lengths			Bond angles		
					Counts	RMSZ	# Z  > 2	Counts	RMSZ	# Z  > 2
2	TG1	A	1995	-	43,48,48	1.99	13 (30%)	44,72,72	1.98	12 (27%)

In the following table, the Chirals column lists the number of chiral outliers, the number of chiral centers analysed, the number of these observed in the model and the number defined in the Chemical Component Dictionary. Similar counts are reported in the Torsion and Rings columns. '-' means no outliers of that kind were identified.

Mol	Type	Chain	Res	Link	Chirals	Torsions	Rings
2	TG1	A	1995	-	-	16/33/99/99	0/3/3/3

All (13) bond length outliers are listed below:

Mol	Chain	Res	Type	Atoms	Z	Observed(Å)	Ideal(Å)
2	A	1995	TG1	O4-C21	5.55	1.33	1.21
2	A	1995	TG1	O3-C3	4.24	1.52	1.44
2	A	1995	TG1	O6-C7	4.10	1.50	1.43
2	A	1995	TG1	C4-C5	3.83	1.37	1.34
2	A	1995	TG1	O1-C13	3.71	1.44	1.34
2	A	1995	TG1	C34-C11	3.26	1.57	1.53
2	A	1995	TG1	O7-C27	2.68	1.41	1.34
2	A	1995	TG1	O11-C11	2.65	1.47	1.42
2	A	1995	TG1	C21-C22	2.60	1.58	1.50
2	A	1995	TG1	C1-C2	2.34	1.58	1.54
2	A	1995	TG1	C31-C10	2.26	1.57	1.52
2	A	1995	TG1	C11-C7	2.16	1.58	1.55
2	A	1995	TG1	C9-C10	2.09	1.57	1.54

All (12) bond angle outliers are listed below:

Mol	Chain	Res	Type	Atoms	Z	Observed(°)	Ideal(°)
2	A	1995	TG1	C10-O9-C32	6.80	137.68	121.53
2	A	1995	TG1	C7-C6-C5	3.53	124.44	115.41
2	A	1995	TG1	C11-C7-C6	-3.39	96.50	103.03
2	A	1995	TG1	O12-C12-C11	-3.34	124.92	128.28
2	A	1995	TG1	C24-C22-C21	3.32	133.92	120.78
2	A	1995	TG1	O5-C12-O12	3.11	125.74	121.62
2	A	1995	TG1	C23-C22-C21	-2.91	108.81	116.09
2	A	1995	TG1	C2-O1-C13	-2.55	113.29	117.53

*Continued on next page...*

*Continued from previous page...*

Mol	Chain	Res	Type	Atoms	Z	Observed(°)	Ideal(°)
2	A	1995	TG1	C34-C11-C12	2.11	116.86	112.60
2	A	1995	TG1	O7-C27-O8	2.03	128.62	123.70
2	A	1995	TG1	C31-C10-C9	-2.03	106.17	110.29
2	A	1995	TG1	C26-C4-C3	-2.03	117.99	121.27

There are no chirality outliers.

All (16) torsion outliers are listed below:

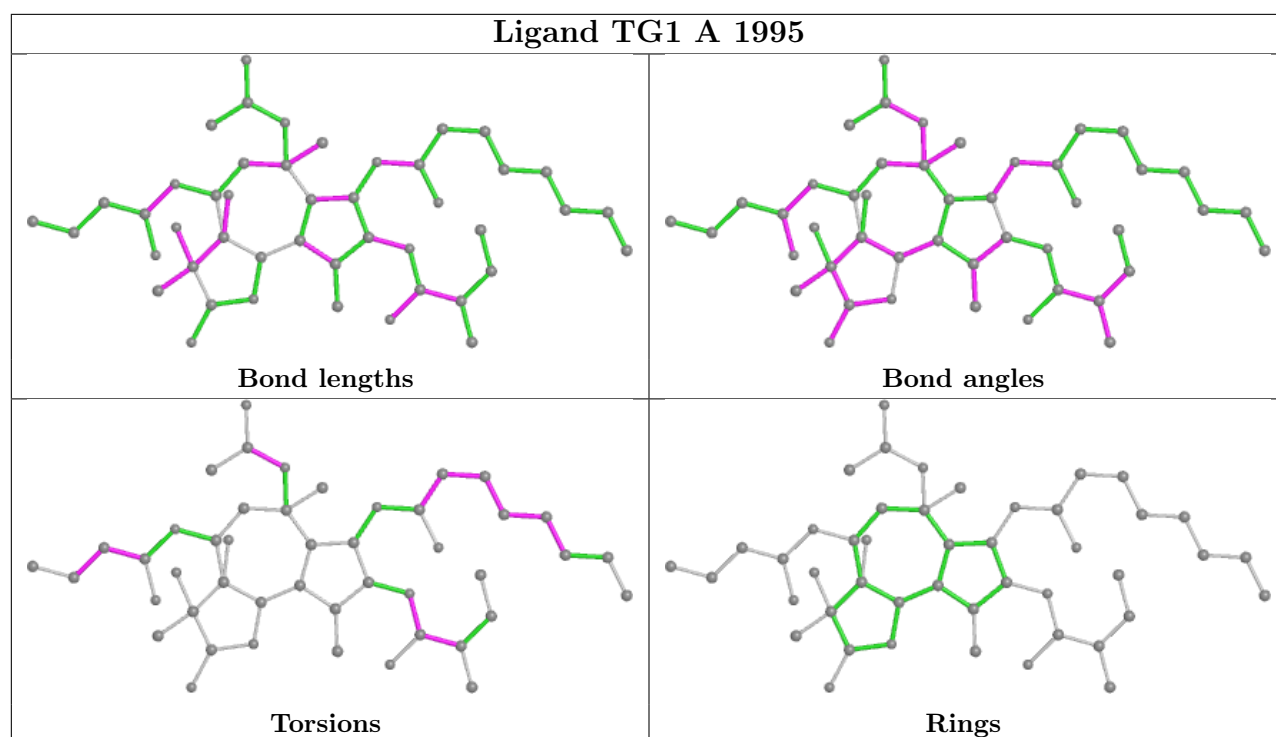
Mol	Chain	Res	Type	Atoms
2	A	1995	TG1	O4-C21-C22-C24
2	A	1995	TG1	C33-C32-O9-C10
2	A	1995	TG1	O10-C32-O9-C10
2	A	1995	TG1	O4-C21-C22-C23
2	A	1995	TG1	C15-C16-C17-C18
2	A	1995	TG1	C27-C28-C29-C30
2	A	1995	TG1	O3-C21-C22-C23
2	A	1995	TG1	C16-C17-C18-C19
2	A	1995	TG1	C13-C14-C15-C16
2	A	1995	TG1	O3-C21-C22-C24
2	A	1995	TG1	C14-C15-C16-C17
2	A	1995	TG1	O1-C13-C14-C15
2	A	1995	TG1	O7-C27-C28-C29
2	A	1995	TG1	O2-C13-C14-C15
2	A	1995	TG1	C22-C21-O3-C3
2	A	1995	TG1	O8-C27-C28-C29

There are no ring outliers.

No monomer is involved in short contacts.

The following is a two-dimensional graphical depiction of Mogul quality analysis of bond lengths, bond angles, torsion angles, and ring geometry for all instances of the Ligand of Interest. In addition, ligands with molecular weight > 250 and outliers as shown on the validation Tables will also be included. For torsion angles, if less than 5% of the Mogul distribution of torsion angles is within 10 degrees of the torsion angle in question, then that torsion angle is considered an outlier. Any bond that is central to one or more torsion angles identified as an outlier by Mogul will be highlighted in the graph. For rings, the root-mean-square deviation (RMSD) between the ring in question and similar rings identified by Mogul is calculated over all ring torsion angles. If the average RMSD is greater than 60 degrees and the minimal RMSD between the ring in question and any Mogul-identified rings is also greater than 60 degrees, then that ring is considered an outlier. The outliers are highlighted in purple. The color gray indicates Mogul did not find sufficient equivalents in the CSD to analyse the geometry.





#### 4.7 Other polymers [i](#)

There are no such residues in this entry.

#### 4.8 Polymer linkage issues [i](#)

There are no chain breaks in this entry.

## 5 Fit of model and data [i](#)

### 5.1 Protein, DNA and RNA chains [i](#)

In the following table, the column labelled '#RSRZ > 2' contains the number (and percentage) of RSRZ outliers, followed by percent RSRZ outliers for the chain as percentile scores relative to all X-ray entries and entries of similar resolution. The OWAB column contains the minimum, median, 95<sup>th</sup> percentile and maximum values of the occupancy-weighted average B-factor per residue. The column labelled 'Q < 0.9' lists the number of (and percentage) of residues with an average occupancy less than 0.9.

Mol	Chain	Analysed	<RSRZ>	#RSRZ>2	OWAB(Å <sup>2</sup> )	Q<0.9
1	A	994/994 (100%)	-0.24	21 (2%) 63 43	19, 62, 136, 184	0

All (21) RSRZ outliers are listed below:

Mol	Chain	Res	Type	RSRZ
1	A	507	ALA	5.1
1	A	106	VAL	5.0
1	A	281	ASP	4.9
1	A	878	GLU	4.5
1	A	284	HIS	4.4
1	A	994	GLY	3.9
1	A	505	ARG	3.8
1	A	81	GLY	3.7
1	A	504	SER	3.6
1	A	286	GLY	3.6
1	A	47	LYS	3.6
1	A	80	GLU	3.0
1	A	280	ASN	2.9
1	A	508	VAL	2.7
1	A	506	ALA	2.7
1	A	993	GLU	2.6
1	A	50	TRP	2.5
1	A	503	SER	2.2
1	A	928	TRP	2.2
1	A	109	GLU	2.1
1	A	287	SER	2.1

### 5.2 Non-standard residues in protein, DNA, RNA chains [i](#)

There are no non-standard protein/DNA/RNA residues in this entry.

### 5.3 Carbohydrates [i](#)

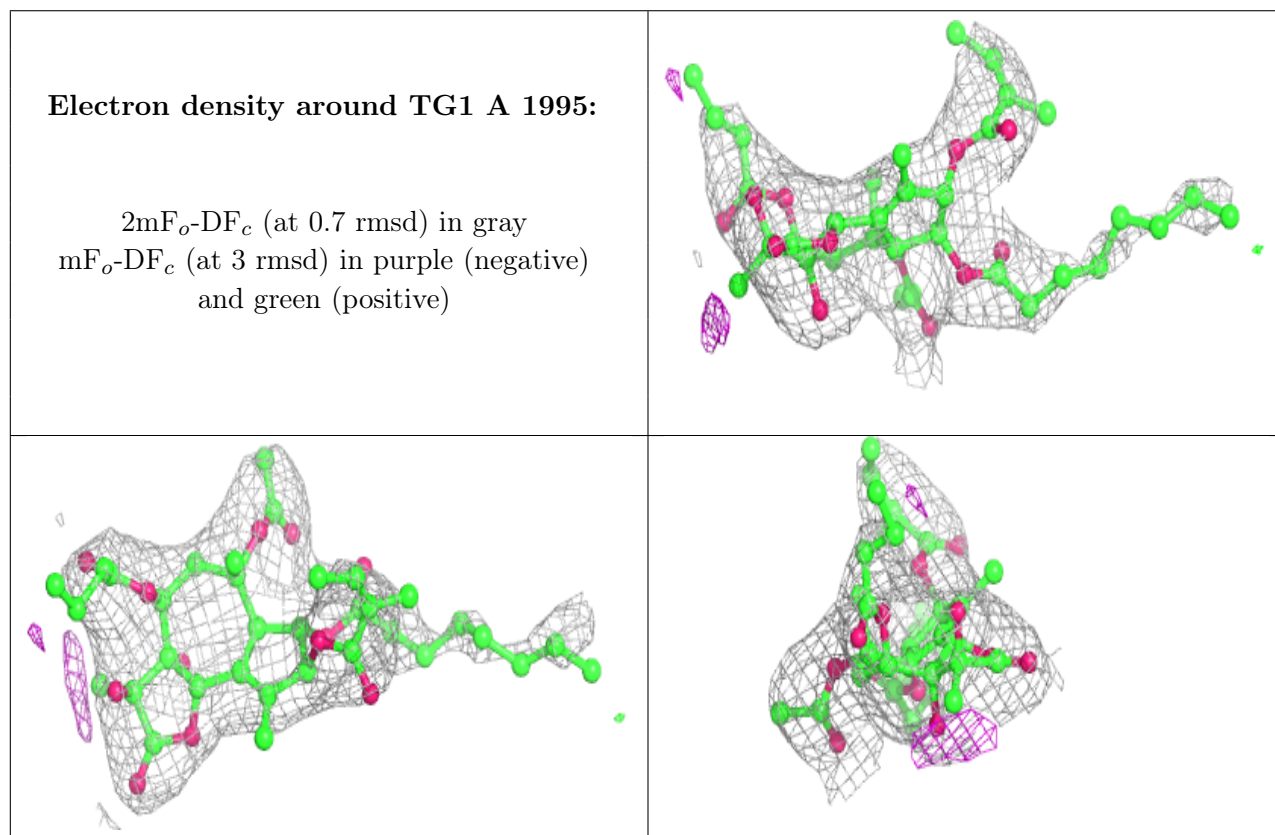
There are no monosaccharides in this entry.

### 5.4 Ligands [i](#)

In the following table, the Atoms column lists the number of modelled atoms in the group and the number defined in the chemical component dictionary. The B-factors column lists the minimum, median, 95<sup>th</sup> percentile and maximum values of B factors of atoms in the group. The column labelled 'Q<0.9' lists the number of atoms with occupancy less than 0.9.

Mol	Type	Chain	Res	Atoms	RSCC	RSR	B-factors( $\text{\AA}^2$ )	Q<0.9
3	NA	A	1996	1/1	0.84	0.29	52,52,52,52	0
2	TG1	A	1995	46/46	0.93	0.28	55,59,60,61	0

The following is a graphical depiction of the model fit to experimental electron density of all instances of the Ligand of Interest. In addition, ligands with molecular weight > 250 and outliers as shown on the geometry validation Tables will also be included. Each fit is shown from different orientation to approximate a three-dimensional view.



## 5.5 Other polymers [i](#)

There are no such residues in this entry.